

stats in brief

2022

IMPROVING LIVES THROUGH DATA ECOSYSTEMS



stats sa

Department:
Statistics South Africa
REPUBLIC OF SOUTH AFRICA






Stats in Brief, 2022

Risenga Maluleke
Statistician-General

Statistics South Africa
2022



Published by Statistics South Africa
Private Bag X44
Pretoria
0001

ISBN: 978-0-621-50461-3

© Statistics South Africa, 2022

Users may apply or process this data, provided Statistics South Africa (Stats SA) is acknowledged as the original source of the data; that it is specified that the application and/or analysis is the result of the user's independent processing of the data; and that neither the basic data nor any reprocessed version or application thereof may be sold or offered for sale in any form whatsoever without prior permission from Stats SA.

A complete set of Stats SA publications is available at Stats SA Library and the following libraries:

National Library of South Africa, Pretoria Division
National Library of South Africa, Cape Town Division
Library of Parliament, Cape Town
Bloemfontein Public Library
Natal Society Library, Pietermaritzburg
Johannesburg Public Library
Eastern Cape Library Services, Qonce
Central Regional Library, Polokwane
Central Reference Library, Mbombela
Central Reference Collection, Kimberley
Central Reference Library, Mmabatho

This report is available on the Stats SA website: www.statssa.gov.za

Copies are obtainable from: Reprographics, Statistics South Africa

Tel: (012) 310 8619
(012) 310 8358
(012) 310 8161
Email: millies@statssa.gov.za

Stats in Brief presents data sourced from a range of Statistics South Africa's (Stats SA) publications produced throughout the year. No other external sources to Stats SA were used in the compilation of this edition.

The 2022 edition of this publication is based on information collected and published by Stats SA as at the beginning of December 2022. Data that had not been released prior to this date were, as a result, not updated.

The feedback we receive from you as users of this publication is vital in ensuring that we continue to provide appropriate data that meet your expectations. We rely on you to ensure that we continue to provide you with data that not only fulfil your needs, but is also presented in a concise and relevant to your needs.

Abbreviations and symbols

LFS	:	Labour force survey
n/a	:	not applicable
n.e.c.	:	not elsewhere classified
RDP	:	Reconstruction and Development Programme
SA	:	South Africa(n)
..	:	Data not available
-	:	No response from respondents
0 or 0,0	:	Figure too small to publish
*	:	Revised
†	:	For all values of 10 000 or lower the sample size is too small for reliable estimates

Rounding

Figures are rounded off independent of one another. Details, therefore, may not add to totals because of rounding.

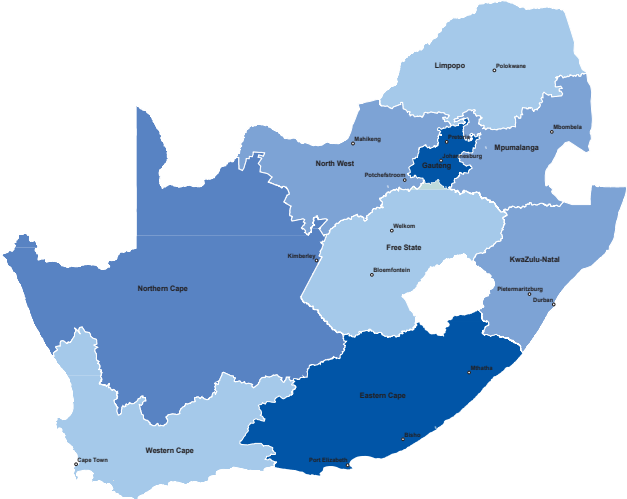


C

Content

1. Geography	1
2. Demography	5
3. Vital statistics	13
4. Tourism	25
5. Documented migration	33
6. Labour statistics	39
7. Prices	77
8. Mining	85
9. Manufacturing	89
10. Construction	95
11. Energy	99
12. Transport	103
13. Financial statistics: Private enterprises operating in the formal non-agriculture business sector	107
14. Selected internal trade activities	123
15. Social services and housing	129
16. Debts	165
17. National accounts	169
18. Government finances	175

South Africa



1

Geography



1

Geography

- | | | |
|-----|--|---|
| 1.1 | Area per province in square kilometres | 3 |
| 1.2 | Area by province in South Africa (percentages) | 4 |

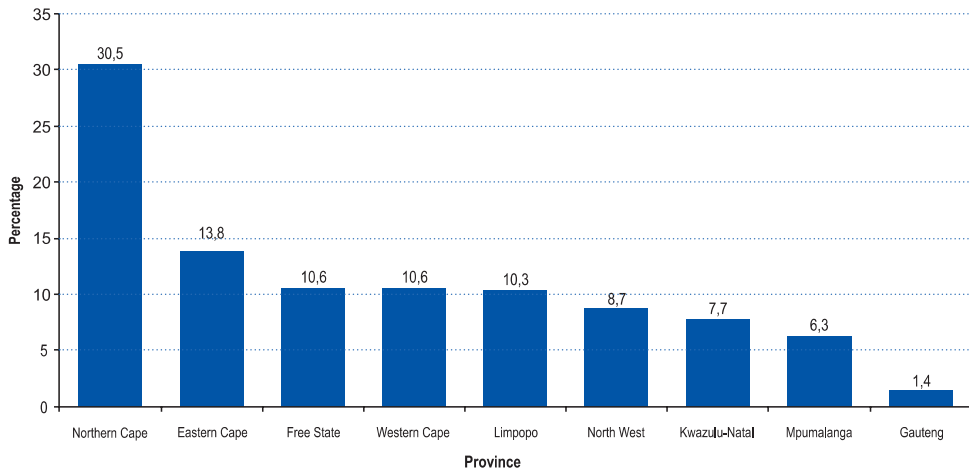
1.1 Area per province in square kilometres

Eastern Cape	Free State	Gauteng	Kwazulu-Natal	Limpopo	Mpumalanga	North West	Northern Cape	Western Cape	South Africa
168 966	129 825	18 178	94 361	125 755	76 495	104 882	372 889	129 462	1 220 813

Source: Stats SA, Geography Division

The land area per province has changed due to provincial boundary changes in certain provinces.

1.2 Area by province in South Africa (percentages)



2

Demography

Demography

2.1	Mid-year population estimates by population group, age group and gender, 2022 (thousands)	7
2.2	Provincial mid-year population estimates by age group and gender, 2022 (thousands)	8
2.3	Mid-year population distribution by population group and gender, 2022 (thousands)	10
2.4	Percentage distribution of the projected provincial share of the total population, 2009-2022	11
2.5	Estimated annual population growth rates by population group and gender, 2009-2022	12

2.1 Mid-year population estimates by age group, population group and gender, 2022 (thousands)

	Black African			Coloured			Indian or Asian			White			South Africa		
	Male	Female	Total	Male	Female	Total	Male	Female	Total	Male	Female	Total	Male	Female	Total
0-4	2 485	2 422	4 907	240	233	473	50	48	98	110	107	217	2 885	2 810	5 695
5-9	2 431	2 371	4 803	237	230	468	50	48	98	119	116	235	2 838	2 766	5 604
10-14	2 470	2 416	4 887	237	231	468	50	48	98	133	129	262	2 890	2 824	5 714
15-19	2 178	2 156	4 334	215	211	427	46	44	90	127	124	251	2 567	2 535	5 102
20-24	1 970	1 955	3 925	209	205	413	50	45	95	123	123	246	2 352	2 327	4 679
25-29	2 213	2 179	4 393	217	213	430	68	55	123	129	130	258	2 626	2 578	5 204
30-34	2 395	2 343	4 738	219	216	435	79	63	142	140	139	280	2 834	2 762	5 596
35-39	2 148	2 124	4 272	200	201	401	81	66	147	154	156	310	2 584	2 546	5 130
40-44	1 605	1 661	3 266	165	172	337	72	59	131	149	151	300	1 990	2 043	4 033
45-49	1 234	1 317	2 551	152	157	309	61	54	115	161	171	332	1 608	1 699	3 307
50-54	901	1 033	1 934	142	161	303	51	49	100	169	176	345	1 263	1 420	2 682
55-59	682	904	1 586	124	150	274	42	46	88	150	162	313	999	1 261	2 260
60-64	499	742	1 240	100	123	223	33	39	73	145	164	310	778	1 068	1 846
65-69	355	584	939	67	94	160	26	33	59	132	148	279	579	858	1 437
70-74	226	414	640	42	66	108	18	26	44	115	138	253	400	644	1 044
75-79	117	259	376	21	39	60	10	18	28	88	109	198	236	426	662
80+	78	204	281	14	37	52	7	18	26	98	152	250	197	412	609
Total	23 985	25 085	49 071	2 602	2 738	5 340	795	760	1 555	2 243	2 397	4 639	29 625	30 980	60 605

Source: Stats SA, *Mid-year population estimates* (Statistical release P0302)

2.2 Provincial mid-year population estimates by age group and gender, 2022 (thousands)

	Eastern Cape			Free State			Gauteng			KwaZulu-Natal			Limpopo		
	Male	Female	Total	Male	Female	Total	Male	Female	Total	Male	Female	Total	Male	Female	Total
0-4	357	349	706	133	130	263	659	644	1 303	613	596	1 209	338	327	665
5-9	365	356	721	135	132	267	635	620	1 255	601	584	1 186	338	328	666
10-14	383	372	754	146	143	290	619	610	1 228	604	590	1 194	341	326	667
15-19	319	311	630	132	130	262	579	582	1 160	536	528	1 064	293	277	570
20-24	224	223	446	113	114	227	666	664	1 329	472	470	942	214	204	418
25-29	228	224	452	117	116	233	810	821	1 631	497	498	995	218	208	426
30-34	253	255	508	128	127	255	871	858	1 728	508	514	1 022	233	236	469
35-39	232	244	476	119	120	239	776	757	1 533	445	472	917	216	223	439
40-44	178	198	376	91	99	190	608	590	1 198	322	370	692	167	190	357
45-49	144	176	320	75	85	160	505	456	960	255	308	563	128	168	296
50-54	114	158	272	62	74	135	394	366	760	189	250	440	97	137	234
55-59	93	151	244	50	65	115	306	314	621	149	228	376	75	124	198
60-64	79	142	221	40	54	94	238	263	501	115	193	308	56	104	160
65-69	63	118	181	31	45	76	173	206	379	87	155	242	42	89	131
70-74	46	90	137	21	34	55	116	147	263	63	122	185	30	69	99
75-79	32	66	97	12	22	34	64	91	156	37	79	116	17	46	63
80+	46	90	136	9	19	28	34	59	93	29	60	89	19	64	83
Total	3 156	3 521	6 677	1 414	1 508	2 922	8 051	8 047	16 099	5 522	6 017	11 538	2 823	3 119	5 941

Source: Stats SA, *Mid-year population estimates* (Statistical release P0302)

Provincial estimates are based on the latest available boundary information obtained from the Demarcation Board.

2.2 Provincial mid-year population estimates by age group and gender, 2022 (thousands) (concl.)

	Mpumalanga			Northern Cape			North West			Western Cape			South Africa		
	Male	Female	Total	Male	Female	Total	Male	Female	Total	Male	Female	Total	Male	Female	Total
0-4	222	218	440	65	63	127	200	196	396	298	288	586	2 885	2 810	5 695
5-9	215	212	427	64	62	126	198	194	392	286	278	564	2 838	2 766	5 604
10-14	232	230	463	63	63	126	206	202	408	296	289	585	2 890	2 824	5 714
15-19	203	202	406	55	56	111	180	178	357	271	271	541	2 567	2 535	5 102
20-24	189	187	376	47	49	96	155	148	304	272	270	542	2 352	2 327	4 679
25-29	213	199	412	52	50	102	178	157	334	314	305	619	2 626	2 578	5 204
30-34	233	213	446	60	55	115	203	175	378	345	330	674	2 834	2 762	5 596
35-39	217	199	415	58	51	109	192	165	357	329	317	646	2 584	2 546	5 130
40-44	162	160	322	46	41	86	154	136	290	262	261	523	1 990	2 043	4 033
45-49	122	135	256	36	35	71	123	115	238	222	221	443	1 608	1 699	3 307
50-54	92	110	202	29	31	60	98	95	193	188	199	387	1 263	1 420	2 682
55-59	72	95	167	22	27	49	81	81	162	151	177	328	999	1 261	2 260
60-64	54	74	128	18	23	41	64	67	131	115	149	264	778	1 068	1 846
65-69	40	59	100	14	20	33	44	53	97	84	114	198	579	858	1 437
70-74	27	43	70	9	15	25	28	39	67	60	85	144	400	645	1 044
75-79	15	27	42	6	11	17	16	28	44	37	57	94	236	426	663
80+	15	34	49	5	12	17	11	30	40	30	44	75	197	412	609
Total	2 324	2 397	4 721	648	661	1 309	2 129	2 058	4 187	3 559	3 653	7 212	29 625	30 980	60 605

Source: Stats SA, *Mid-year population estimates* (Statistical release P0302)

Provincial estimates are based on the latest available boundary information obtained from the Demarcation Board.

2.3 Mid-year population distributions by population group and gender, 2022 (thousands)

	Male		Female		Total	
	Thousands	% of total population	Thousands	% of total population	Thousands	% of total population
Black African	23 985	81,0	25 085	81,0	49 071	81,0
Coloured	2 602	8,8	2 738	8,8	5 340	8,8
Indian or Asian	795	2,7	760	2,5	1 555	2,6
White	2 243	7,6	2 397	7,7	4 639	7,7
Total	29 625	100,0	30 980	100,0	60 605	100,0

2.4 Percentage distributions of the projected provincial share of the total population, 2009-2022

Province	2009	2010	2011	2012	2013	2014	2015	2016	2017	2018	2019	2020	2021	2022
Western Cape	11,1	11,2	11,3	11,3	11,4	11,5	11,5	11,6	11,6	11,7	11,7	11,8	11,8	11,9
Eastern Cape	13,1	12,9	12,7	12,5	12,4	12,2	12,0	11,9	11,7	11,6	11,4	11,3	11,1	11,0
Northern Cape	2,2	2,2	2,2	2,2	2,2	2,2	2,2	2,2	2,2	2,2	2,2	2,2	2,2	2,2
Free State	5,5	5,4	5,4	5,3	5,2	5,2	5,1	5,1	5,0	5,0	4,9	4,9	4,9	4,8
KwaZulu-Natal	20,0	19,9	19,8	19,7	19,7	19,6	19,5	19,4	19,4	19,3	19,2	19,2	19,1	19,0
North West	6,7	6,8	6,8	6,8	6,8	6,8	6,8	6,8	6,8	6,9	6,9	6,9	6,9	6,9
Gauteng	23,0	23,3	23,7	24,0	24,3	24,5	24,8	25,1	25,4	25,6	25,9	26,1	26,4	26,6
Mpumalanga	7,8	7,8	7,8	7,8	7,8	7,8	7,8	7,8	7,8	7,8	7,8	7,8	7,8	7,8
Limpopo	10,6	10,5	10,4	10,3	10,3	10,2	10,2	10,1	10,1	10,0	10,0	9,9	9,9	9,8
Total	100,0	100,0	100,0	100,0	100,0	100,0	100,0	100,0	100,0	100,0	100,0	100,0	100,0	100,0

Source: Stats SA, *Mid-year population estimates* (Statistical release P0302)

Provincial estimates are based on the latest available boundary information obtained from the Demarcation Board.

2.5 Estimated annual population growth rates by population group and gender, 2009-2022

		2009-2010	2010-2011	2011-2012	2012-2013	2013-2014	2014-2015	2015-2016	2016-2017	2017-2018	2018-2019	2019-2020	2020-2021	2021-2022
Black African	Male	1,80	1,87	1,87	1,87	1,87	1,83	1,77	1,75	1,74	1,77	1,63	1,22	1,23
	Female	1,62	1,67	1,68	1,69	1,71	1,66	1,61	1,59	1,60	1,64	1,54	1,13	1,19
	Total	1,71	1,77	1,77	1,78	1,79	1,74	1,69	1,67	1,67	1,70	1,59	1,18	1,21
Coloured	Male	1,37	1,37	1,37	1,39	1,39	1,35	1,27	1,27	1,26	1,25	1,24	1,05	1,11
	Female	1,26	1,27	1,29	1,30	1,32	1,28	1,20	1,19	1,18	1,18	1,18	1,00	1,04
	Total	1,31	1,32	1,33	1,34	1,35	1,31	1,24	1,23	1,22	1,21	1,21	1,02	1,07
Indian or Asian	Male	1,81	1,87	1,85	1,82	1,81	1,76	1,70	1,66	1,66	1,65	1,33	0,43	0,76
	Female	1,26	1,28	1,30	1,31	1,31	1,28	1,24	1,22	1,22	1,22	1,05	0,49	0,66
	Total	1,54	1,57	1,57	1,57	1,56	1,53	1,47	1,44	1,44	1,44	1,19	0,46	0,71
White	Male	-0,16	-0,19	-0,22	-0,24	-0,25	-0,30	-0,36	-0,39	-0,43	-0,46	-0,35	-0,43	-0,47
	Female	-0,10	-0,13	-0,15	-0,16	-0,19	-0,24	-0,30	-0,34	-0,35	-0,37	-0,28	-0,24	-0,29
	Total	-0,13	-0,16	-0,18	-0,20	-0,22	-0,27	-0,33	-0,36	-0,39	-0,42	-0,31	-0,33	-0,38
Total	Male	1,58	1,63	1,64	1,64	1,64	1,60	1,54	1,53	1,52	1,54	1,44	1,05	1,08
	Female	1,42	1,46	1,47	1,48	1,50	1,45	1,40	1,38	1,39	1,42	1,35	1,00	1,05
	Total	1,49	1,54	1,55	1,55	1,57	1,52	1,47	1,45	1,46	1,48	1,39	1,03	1,06

Source: Stats SA, *Mid-year population estimates* (Statistical release P0302)

3

Vital statistics

Vital statistics

3.1	Recorded marriages by province, 2003-2020 (numbers)	15
3.2	Recorded divorces by province, 2001-2020 (numbers)	16
3.3	Number of minor children involved in recorded divorces by population group, 2003-2020	17
3.4	Registered live birth occurrences by province, 2001-2020 (numbers)	18
3.5	Number of registered deaths by province and year of death, 2000-2018	19
3.6	Percentage distribution of registered deaths by age and year of death, 2013-2018	20
3.7	Percentage distribution of registered deaths by age group and year of death, 2013-2018	21
3.8	Percentage distribution of deaths by main group of underlying cause of death (CD-10), 2012-2018	22
3.9	Leading underlying natural causes of death, 2012-2018 (percentages)	23

3.1 Recorded marriages by province, 2003-2020 (numbers)

	Eastern Cape	Free State	Gauteng	KwaZulu- Natal	Limpopo	Mpuma- langa	North West	Northern Cape	Western Cape	Unspecified	Foreign	Unknown	South Africa
2003	19 980	13 150	45 787	26 683	12 649	10 508	14 395	4 004	25 704	5 478	351	-	178 689
2004	22 401	13 323	44 279	26 513	11 377	9 796	13 500	4 500	26 712	3 716	404	-	176 521
2005	22 104	14 475	44 831	28 461	10 529	9 397	13 312	4 653	28 517	3 888	490	-	180 657
2006	22 775	13 466	49 995	30 239	10 131	9 556	13 758	4 641	29 612	3 217	470	-	184 860
2007	21 508	13 752	45 622	28 858	9 571	9 405	13 572	5 052	29 818	5 434	438	-	183 030
2008	21 164	13 593	46 226	29 361	10 581	9 713	13 916	4 843	30 523	5 643	959	-	186 522
2009	20 903	11 908	41 817	27 266	9 930	9 095	12 585	4 217	28 112	5 429	727	-	171 989
2010	22 329	11 905	41 396	25 862	9 699	8 809	13 193	4 552	26 855	2 396	3 830	-	170 826
2011	26 980	10 560	34 267	27 545	11 044	7 268	10 846	5 063	27 596	5 784	311	-	167 264
2012	18 311	9 830	40 287	27 231	11 597	6 881	10 609	5 044	26 632	4 480	210	-	161 112
2013	16 970	7 765	36 407	23 739	9 516	6 675	10 172	4 763	25 738	1 554	558	14 785	158 642
2014	16 020	8 909	39 213	24 146	10 202	7 533	9 709	5 778	25 865	1 740	567	1 170	150 852
2015	15 279	8 707	37 180	21 097	9 165	7 550	9 302	4 107	22 311	3 003	460	466	138 627
2016	15 438	9 219	36 413	21 440	9 409	7 663	9 699	4 278	20 565	4 898	372	118	139 512
2017	14 550	9 479	35 359	21 206	9 894	7 071	9 238	3 950	22 144	2 114	418	35	135 458
2018	14 080	9 165	33 300	21 180	9 258	6 866	9 071	4 004	19 478	4 407	403	28	131 240
2019	13 333	8 700	32 352	21 753	10 084	7 103	8 477	3 692	16 783	6 745	557	18	129 597
2020	8 649	5 955	22 019	14 948	6 029	4 646	6 083	2 798	13 046	4 835	325	5	89 338

Source: Stats SA, *Marriages and divorces* (Statistical release P0307)

All population groups are included.

Those marriages are registered under civil marriage.

3.2 Recorded divorces by province, 2001-2020 (numbers)

	Eastern Cape	Free State	Gauteng	KwaZulu- Natal	Limpopo	Mpuma- langa	North West	Northern Cape	Western Cape	Unspecified	Foreign	South Africa
2001	2 733	1 661	12 545	4 796	1 035	1 221	1 815	611	5 840	2 787	13	32 257
2002	1 761	1 063	11 666	3 515	1 149	1 255	2 065	536	5 846	1 968	14	30 838
2003	2 555	1 808	10 885	4 090	1 031	1 108	1 840	622	5 549	2 065	13	31 566
2004	2 961	1 696	10 092	4 009	1 134	1 189	1 721	733	4 381	3 812	33	31 768
2005	1 928	1 662	12 302	3 960	996	1 170	1 874	520	5 381	2 639	52	32 484
2006	2 765	1 711	10 544	4 092	941	1 263	1 777	618	4 699	2 811	49	31 270
2007	-	-	-	-	-	-	-	-	-	-	-	-
2008	-	-	-	-	-	-	-	-	-	-	-	-
2009	-	-	-	-	-	-	-	-	-	-	-	-
2010	-	-	-	-	-	-	-	-	-	-	-	-
2011	-	-	-	-	-	-	-	-	-	-	-	-
2012	-	-	-	-	-	-	-	-	-	-	-	-
2013	-	-	-	-	-	-	-	-	-	-	-	-
2014	-	-	-	-	-	-	-	-	-	-	-	-
2015	3 398	2 187	6 544	4 140	1 136	1 747	665	589	4 854	-	-	25 260
2016	3 352	2 361	5 816	4 314	1 028	1 035	558	638	6 224	-	-	25 326
2017	3 285	2 254	6 046	4 349	1 215	997	426	768	6 050	-	-	25 390
2018	3 325	2 457	6 623	3 868	1 207	677	483	370	6 274	-	-	25 284
2019	3 137	1 745	6 318	4 033	1 085	587	176	521	6 108	-	-	23 710
2020	2 234	1 092	4 044	3 239	497	818	629	515	3 029	-	-	16 097

Source: Stats SA, *Marriages and divorces* (Statistical release P0307)

All population groups are included.

Divorces were not published by province between 2007 and 2014.

3.3 Number of minor children involved in recorded divorces by population group, 2003-2020

	Black African	Coloured	Indian or Asian	White	Mixed	Unspecified	Total
2003	8 882	5 069	1 702	11 986	435	5 350	33 424
2004	8 686	3 955	1 711	10 363	458	4 424	29 597
2005	9 609	4 308	1 699	10 278	432	6 068	32 394
2006	9 113	3 451	1 676	11 079	613	5 338	31 270
2007	9 346	4 350	1 644	8 489	560	4 091	28 480
2008	10 110	3 057	1 802	9 481	902	3 572	28 924
2009	10 404	4 736	1 415	8 163	2 047	1 530	28 295
2010	7 719	3 529	1 113	5 633	17	2 372	20 383
2011	6 937	3 753	1 224	5 169	-	1 488	18 571
2012	6 993	4 347	872	5 550	17	1 934	19 713
2013	8 171	4 184	1 257	5 683	29	1 749	21 073
2014	8 680	5 527	1 254	5 187	643	927	22 218
2015	10 468	4 609	1 366	4 970	649	904	22 966
2016	10 345	4 933	1 254	4 561	656	1 001	22 750
2017	11 481	4 643	1 156	4 322	679	889	23 170
2018	12 005	4 721	989	4 229	689	1 094	23 727
2019	10 956	4 815	1 050	3 744	699	820	22 084
2020	7 705	2 572	750	2 693	389	518	14 627

Source: Stats SA, *Marriages and divorces* (Statistical release P0307)

Figures include minor children of all population groups as recorded in the law courts. The age of a minor child is defined as 0-17 years.

3.4 Registered live birth occurrences by province, 2001-2020 (numbers)

	Western Cape	Eastern Cape	Northern Cape	Free State	KwaZulu-Natal	North West	Gauteng	Mpumalanga	Limpopo	Outside SA	Unspecified	South Africa
2001	87 008	129 996	21 140	49 694	234 081	52 676	179 032	75 742	98 469	4 674	108	932 620
2002	86 296	127 449	21 196	49 471	236 109	50 953	179 704	71 418	93 909	4 352	96	920 953
2003	87 361	136 331	21 781	51 775	221 376	53 143	181 294	75 281	96 909	4 355	84	929 690
2004	98 101	150 103	23 659	55 488	231 045	58 718	203 119	83 655	110 173	4 473	119	1 018 653
2005	104 163	154 103	23 897	57 946	241 119	62 205	211 151	87 306	119 427	4 460	171	1 065 948
2006	109 310	156 375	24 391	58 181	250 519	61 986	219 064	87 075	123 044	4 440	170	1 094 555
2007	109 510	148 194	24 719	58 461	240 846	64 267	218 750	87 743	123 489	4 912	253	1 081 144
2008	112 641	144 021	25 357	59 662	242 822	65 694	227 767	90 218	128 015	4 044	178	1 100 419
2009	108 254	130 465	24 619	55 486	224 678	64 012	219 546	86 636	121 775	2 182	185	1 037 838
2010	106 138	126 295	24 601	55 844	221 633	62 340	221 507	84 706	124 782	606	222	1 028 674
2011	105 041	128 427	24 655	54 672	220 507	63 040	221 617	88 376	130 415	283	678	1 037 711
2012	104 269	127 111	25 450	54 703	216 472	64 035	221 723	89 041	130 056	172	788	1 033 820
2013	99 147	123 425	25 312	52 203	217 846	60 024	228 487	83 242	129 700	0	7 219	1 026 605
2014	103 372	125 101	25 538	53 310	216 709	60 296	224 057	85 429	130 495	0	2 517	1 026 824
2015	100 116	117 045	25 118	49 525	202 550	57 951	214 160	77 918	127 651	0	3 367	975 401
2016	95 162	105 313	23 316	46 544	190 502	55 756	205 250	76 650	120 817	0	43	919 353
2017	97 968	108 608	23 927	48 096	190 146	56 719	208 818	77 698	119 339	0	771	932 090
2018	99 126	109 169	24 610	48 095	200 472	56 205	212 071	79 220	125 541	0	129	954 638
2019	105 983	115 977	24 699	49 466	220 033	59 332	221 666	85 560	134 091	0	181	1 016 988
2020	90 380	104 483	21 911	42 897	181 286	54 374	194 557	87 244	122 171	0	0	899 303

Source: Stats SA, *Recorded live births 1999–2018 data sets*

Birth occurrences refer to the number of births that occurred in a specific year and were registered.

Birth occurrences are updated daily on the National Population Register due to late registrations of births. Outside SA are births occurring to South African citizens abroad.

Outside SA births for 2013 are reflected in the province of birth registration.

3.5 Number of registered deaths by province and year of death, 2000-2018

	Western Cape	Eastern Cape	Northern Cape	Free State	KwaZulu- Natal	North West	Gauteng	Mpuma- langa	Limpopo	Outside SA	Unspeci- fied	South Africa
2000	38 534	62 204	34 141	84 018	96 870	31 462	28 186	30 748	11 079	191	36	16
2001	41 081	67 882	36 919	90 186	106 988	35 410	31 236	34 690	11 780	317	39	18
2002	43 593	75 038	40 971	99 470	118 911	38 764	35 280	38 553	12 699	326	38	17
2003	44 604	83 603	45 901	109 580	131 611	44 916	41 155	43 197	13 717	406	48	23
2004	44 274	88 952	49 249	113 588	134 642	46 393	43 152	43 229	14 542	597	68	39
2005	45 597	93 860	50 470	115 328	141 584	48 134	46 324	43 558	14 351	599	80	34
2006	44 712	92 086	52 412	120 075	140 336	53 180	48 838	43 028	15 128	683	2 386	1 607
2007	46 896	88 254	51 062	119 104	137 020	53 063	48 543	43 222	15 079	671	2 264	1 339
2008	47 111	85 577	49 535	118 898	133 510	53 485	47 870	43 174	15 263	738	2 343	1 049
2009	46 195	85 538	47 963	116 606	129 884	53 632	46 213	41 045	15 252	767	1 076	163
2010	46 215	83 365	45 264	106 707	117 876	50 576	42 122	40 355	15 288	849	65	3 235
2011	46 536	77 292	41 403	102 226	107 540	48 007	38 545	38 176	14 883	925	121	2 552
2012	47 560	69 288	35 591	99 505	103 325	49 926	36 905	36 189	14 082	831	2 214	461
2013	46 510	67 447	34 047	98 893	95 146	48 059	35 751	35 687	13 759	674	1 505	240
2014	46 625	70 423	33 314	99 708	91 917	48 702	35 284	35 416	14 115	820	1 058	337
2015	50 835	70 522	32 453	99 194	89 183	47 587	34 671	35 188	13 800	677	401	105
2016	50 438	69 455	32 236	98 753	90 443	46 362	33 604	35 730	14 028	216	585	105
2017	46 507	68 230	31 551	93 959	81 589	44 083	29 580	32 880	13 014	0	17 213	477
2018	48 376	67 119	28 927	90 974	84 778	42 270	30 122	31 486	13 962	0	0	16 000

Source: Stats SA, *Mortality and causes of death in South Africa, trends dataset 1998–2018*

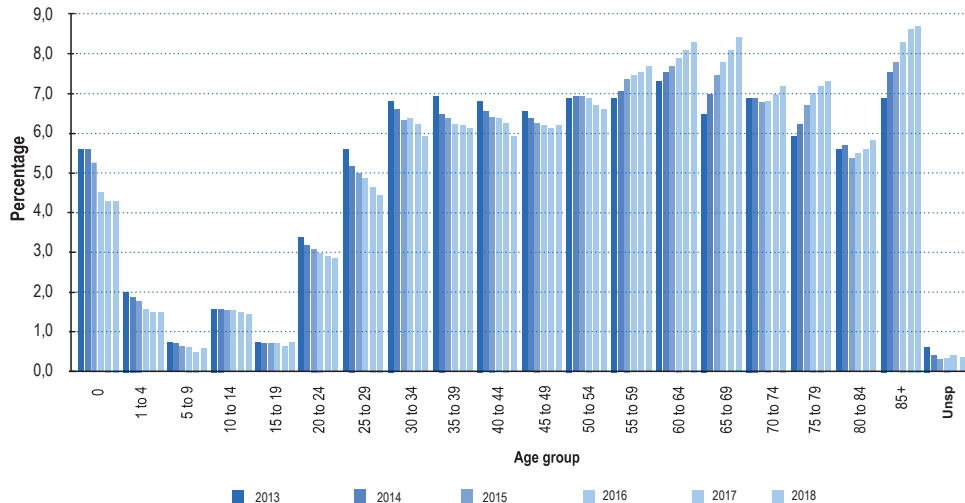
The completeness of the death register varies by year and province of death. Deaths are reported for the province in which the death took place, not for the usual province of residence.

3.6 Percentage distribution of registered deaths by age and year of death, 2013-2018

Age	2013	2014	2015	2016	2017	2018
0	26 875	26 875	25 123	21 940	20 388	20 157
1-4	9 431	8 958	7 946	7 248	6 221	6 122
5-9	3 557	3 326	3 212	3 073	2 681	2 760
10-14	7 396	7 396	7 092	7 051	6 789	6 594
15-19	3 400	3 259	3 186	3 175	2 984	3 216
20-24	15 642	14 852	14 535	14 250	13 494	12 851
25-29	26 252	24 482	23 725	23 056	21 460	20 241
30-34	32 113	31 314	29 733	29 624	28 453	26 573
35-39	33 241	31 309	30 311	29 178	28 223	27 716
40-44	32 682	31 430	30 604	30 184	28 788	27 128
45-49	31 452	30 540	30 088	29 491	28 650	28 379
50-54	32 956	33 013	32 797	32 499	30 995	30 023
55-59	33 119	33 719	34 849	34 867	34 182	34 317
60-64	35 281	36 675	36 972	37 401	37 085	37 639
65-69	31 117	33 592	35 531	36 593	37 150	38 006
70-74	32 971	33 001	32 363	32 250	32 115	32 920
75-79	28 476	29 623	31 793	33 096	32 770	32 792
80-84	26 639	26 995	25 824	26 062	25 779	26 395
85+	33 184	35 871	37 380	39 346	39 120	38 868
Unsp.	1 934	1 489	1 552	1 571	1 756	1 317
Total	477 462	477 484	474 175	470 396	446 544	446 544

Source: Stats SA, *Mortality and causes of death in South Africa, 2018: Findings from death notification* (Statistical release P0309.3)

3.7 Percentage distribution of registered deaths by age group and year of death, 2013-2018



Source: Stats SA, *Mortality and causes of death in South Africa, 2013-2018*

3.8 Percentage distribution of deaths by main group of underlying cause of death (CD-10), 2012-2018

	2012	2013	2014	2015	2016	2017	2018
Certain infectious and parasitic diseases (A00-B99)	109 871	107 331	103 140	92 357	85 560	80 530	75 255
Neoplasms (C00-D48)	38 832	39 766	41 658	43 191	43 987	44 244	45 086
Diseases of the blood and immune mechanism (D50-D89)	14 536	10 713	10 162	13 211	12 807	10 632	9 646
Endocrine, nutritional and metabolic diseases (E00-E90)	28 760	30 158	31 281	32 546	32 869	32 077	32 857
Mental and behavioural disorders (F00-F99)	1 800	1 841	2 093	1 949	2 374	2 598	2 765
Diseases of the nervous system (G00-G99)	12 272	11 377	10 817	11 029	10 017	9 692	9 882
Diseases of the eye and adnexa (H00-H59)	40	18	18	24	31	46	47
Diseases of the ear and mastoid process (H60-H95)	58	59	56	59	68	63	59
Diseases of the circulatory system (I00-I99)	81 530	79 613	83 098	84 654	86 952	84 284	85 686
Diseases of the respiratory system (J00-J99)	53 628	49 164	47 429	45 467	44 082	43 241	41 243
Diseases of the digestive system (K00-K93)	12 894	12 380	12 540	12 479	12 112	11 880	11 642
Diseases of the skin and subcutaneous tissue (L00-L99)	1 183	853	850	1 356	1 054	1 374	1 454
Diseases of the musculoskeletal system etc. (M00-M99)	1 672	1 569	1 699	1 707	1 869	1 856	2 052
Diseases of the genitourinary system (N00-N99)	8 643	9 160	9 279	9 320	9 690	9 743	9 967
Pregnancy, childbirth and puerperium (O00-O99)	1 060	981	1 086	973	834	682	560
Perinatal conditions (P00-P96) ¹	10 453	9 824	9 887	9 940	9 104	9 063	7 667
Congenital malformations (Q00-Q99)	2 119	2 060	2 289	2 362	2 498	2 476	2 731
Symptoms and signs not elsewhere classified (R00-R99)	67 534	60 952	59 291	58 561	62 241	61 412	61 249
External causes of morbidity and mortality (V01-Y98)	48 992	49 899	51 046	53 431	53 806	53 190	54 166

Source: Stats SA, *Mortality and causes of death in South Africa, trends dataset 2012–2018*

3.9 Leading underlying natural causes of death, 2012-2018 (percentages)

Broad group of underlying causes	2012	2013	2014	2015	2016	2017	2018
Tuberculosis (A15-A19)	9,9	8,8	8,3	7,2	6,5	6,4	6,0
Diabetes mellitus (E10-E14)	4,4	4,9	5,0	5,4	5,5	5,6	5,9
Cerebrovascular diseases (I60-I69)	5,0	4,9	5,1	5,0	5,0	5,0	5,1
Other forms of heart disease (I30-I52)	4,5	4,7	4,8	4,9	5,2	5,0	5,1
Human immunodeficiency virus [HIV] disease (B20-B24)	3,9	5,0	4,8	4,8	4,8	4,8	4,8
Hypertensive diseases (I10-I15)	3,4	3,6	3,9	4,2	4,3	4,4	4,5
Influenza and pneumonia (J09-J18)	5,5	5,1	4,8	4,4	4,3	4,2	3,9
Ischaemic heart diseases (I20_I25)	2,5	2,5	2,5	2,7	2,8	2,8	3,0
Chronic lower respiratory diseases (J40-J47)	2,5	2,6	2,7	2,7	2,8	2,9	3,0
Malignant neoplasms of digestive organs (C15_C26)	2,0	2,1	2,1	2,3	2,3	2,4	2,4
Other natural causes	46,6	45,5	45,3	45,1	45,1	44,8	44,4
Non-natural causes	9,9	10,4	10,7	11,3	11,4	11,6	11,9
All causes	495 877	477 718	477 719	474 616	471 955	459 083	454 014

Source: South African death registration data

Causes of death are based on the Tenth Revision, *International Classification of Disease*, 1992.

4

Tourism

Tourism

4.1	Tourists by mode of travel, 2009-2021 (thousands)	27
4.2	Tourists by purpose of visit, 2009-2021 (thousands)	28
4.3	Tourists by country of residence, 2012-2021 (thousands)	29

4.1 Tourists by mode of travel, 2009-2021 (thousands)

	Mode of travel					Total
	Road	Air	Sea	Rail	Unspecified	
2009	4 854	2 152	1	3	2	7 012
2010	5 328	2 739	5	1	1	8 074
2011	3 849	1 569	6	..	0	5 424
2012	6 240	2 937	12	..	0	9 188
2013	6 365	3 164	7	..	0	9 537
2014	6 971	2 573	4	9 549
2015	6 361	2 535	7	8 904
2016	7 140	2 893	11	10 044
2017	7 216	3 060	9	10 285
2018	7 368	3 089	15	10 472
2019	7 206	3 006	16	10 228
2020	2 018	774	10	2 802
2021	1 650	606	0	2 256

4.2 Tourists by purpose of visit, 2009-2021 (thousands)

	Purpose of visit					Total
	Holiday	Business	Study	Transit ¹	Medical ²	
2009	6 803	106	91	12	..	7 012
2010	7 552	247	84	191	..	8 074
2011	5 115	122	65	122	..	5 424
2012	8 310	205	88	585	..	9 188
2013	8 610	200	72	655	..	9 537
2014	9 142	335	73	9 549
2015	8 503	325	75	8 904
2016	9 707	256	82	10 044
2017	9 951	255	79	10 285
2018	10 149	242	74	..	7	10 472
2019	9 947	209	66	..	6	10 228
2020	2 689	86	25	..	2	2 802
2021	2 057	163	31	..	4	2 256

Sources: Stats SA, *Tourism 2009-2021* (Report No. 03-51-02)

¹Travellers in transit were not included in the program for January 2014 going forward.

²Medical treatment tourists were now included in the program for 2018 going forward.

4.3 Tourists by country of residence, 2012-2021 (thousands)

	Europe								Total
	France	Germany	Italy	Netherlands	Portugal	Switzerland	UK	Other	
2012	122	266	61	118	48	52	438	305	1 410
2013	134	301	67	121	53	59	437	322	1 492
2014	132	275	59	131	44	49	402	289	1 379
2015	128	257	52	122	40	49	407	276	1 331
2016	154	312	61	148	41	55	448	325	1 544
2017	196	349	61	160	38	59	448	350	1 661
2018	186	343	64	147	32	58	431	358	1 619
2019	165	323	65	144	30	55	437	337	1 556
2020	41	106	11	35	7	16	132	98	446
2021	20	44	7	22	6	11	46	61	217

4.3 Tourists by country of residence, 2012-2021 (thousands) (cont.)

	North America			Central and South America				Australasia			Total
	USA	Other	Total	Argentina	Brazil	Other	Total	Australia	New Zealand	Other	
2012	122	266	61	118	48	52	438	305	1 410	0	148
2013	347	69	416	19	83	27	129	125	23	0	148
2014	309	61	370	9	39	17	65	111	21	0	132
2015	297	56	353	5	29	16	50	99	19	1	119
2016	345	61	406	10	39	19	68	109	22	1	132
2017	371	67	438	15	68	24	107	116	17	1	134
2018	377	68	445	19	71	27	117	116	15	0	131
2019	374	66	440	16	77	27	120	111	16	1	128
2020	72	18	90	5	19	6	30	21	4	0	25
2021	7	82	89	0	5	5	10	4	0	0	4

4.3 Tourists by country of residence, 2012-2021 (thousands) (cont.)

	Middle East				Asia			
	Israel	Saudi Arabia	Other	Total	India	China	Other	Total
2012	21	5	15	41	107	132	159	398
2013	22	6	14	43	112	151	169	432
2014	19	7	13	39	86	83	100	269
2015	19	7	13	39	78	85	88	251
2016	25	11	18	54	95	117	116	328
2017	26	11	19	56	98	97	122	317
2018	26	8	16	50	93	97	121	311
2019	29	11	16	56	96	93	122	311
2020	6	3	3	12	19	13	25	57
2021	3	5	5	13	18	7	19	44

4.3 Tourists by country of residence, 2012-2021 (thousands) (cont.)

	SADC							Total
	Botswana	Lesotho	Mozambique	Namibia	Swaziland	Zimbabwe	Other	
2012	452	1 618	1 104	201	769	1 848	495	6 656
2013	537	1 461	1 117	222	836	1 935	567	6 856
2014	556	1 502	1 283	211	918	2 144	489	7 280
2015	594	1 395	1 200	213	838	1 901	434	6 575
2016	680	1 757	1 268	215	894	2 028	472	7 314
2017	681	1 747	1 339	209	877	2 040	494	7 387
2018	689	1 739	1 361	200	884	2 209	528	7 610
2019	668	1 563	1 333	184	918	2 259	516	7 441
2020	129	449	423	55	215	685	141	2 097
2021	103	355	523	91	178	411	163	1 824

4.3 Tourists by country of residence, 2012-2021 (thousands) (concl.)

	Other African						Total	Unspecified	Grand Total	
	Cameroon	Egypt	Ghana	Kenya	Nigeria	Uganda				Other
2012	6	7	23	33	73	16	52	210	26	9 188
2013	6	8	27	36	85	17	58	237	20	9 537
2014	5	7	20	30	66	13	45	186	15	9 549
2015	5	7	16	27	59	12	45	171	13	8 904
2016	5	9	17	29	66	14	48	188	12	10 044
2017	5	9	18	29	51	14	46	172	13	10 285
2018	5	7	21	29	54	14	46	176	13	10 472
2019	5	8	18	30	39	15	45	160	16	10 228
2020	1	3	5	7	10	4	11	41	4	2 802
2021	2	2	8	8	12	4	14	50	4	2 256

5

Documented migration

Documented migration

5.1	Documented immigrants by country of previous permanent residence, 1994-2015 (numbers)	35
5.2	Self-declared emigrants by country of destination, 1994-2003 (numbers)	36
5.3	Documented immigrants by occupation group, 1994-2003 (numbers)	37
5.4	Self-declared emigrants by occupation group, 1994-2003 (numbers)	38

5.1 Documented immigrants by country of previous permanent residence, 1994-2015 (numbers)

	Europe	Austra- lasia	Middle East	Asia	North America	Central and South Americas	Africa	Indian Ocean Islands	Unspecified	Total
1994	2 784	80	148	1 497	177	72	1 548	80	12	6 398
1995	2 272	85	136	927	238	43	1 304	39	20	5 064
1996	2 315	86	117	1 020	207	50	1 549	52	11	5 407
1997	1 494	56	84	1 034	173	45	1 155	46	16	4 103
1998	1 614	61	77	1 207	146	57	1 169	31	9	4 371
1999	1 213	40	46	693	98	33	1 504	28	14	3 669
2000	978	33	50	991	111	22	831	24	13	3 053
2001	1 714	51	109	1 289	172	41	1 419	31	6	4 832
2002	1 847	65	103	1 738	184	60	2 472	61	15	6 545
2003	2 567	99	190	2 328	272	82	4 961	58	21	10 578
2011	1 252	34	68	2 519	149	62	5 922	-	5	10 011
2012	305	11	9	230	25	21	682	-	-	1 283
2013	791	28	41	1 228	112	45	4 555	-	1	6 801
2014	451	12	41	928	46	19	2 638	-	1	4 136
2015	728	23	61	1 610	57	44	3 872	-	2	6 397

Sources: Stats SA, *Documented immigrants in South Africa* (Statistical release P0351.4), *Tourism and migration* (Statistical release P0351) and *Tourism* (Report No. 03-51-02)

Statistics of documented immigrants are unavailable as from 2004-2010.

The immigration figures are obtained from all legal ports of entry into South Africa.

Africa refers to all the countries in Africa (both mainland and island countries).

5.2 Self-declared emigrants by country of destination, 1994-2003 (numbers)

	Europe	Austra- lasia	Middle East	Asia	North America	Central and South Americas	Africa	Indian Ocean Islands	Unspecified	Total
1994	4 198	2 766	358	173	1 699	45	854	88	54	10 235
1995	2 963	2 449	281	163	1 561	51	1 114	66	77	8 725
1996	3 198	3 035	266	136	1 737	49	1 151	72	64	9 708
1997	2 962	2 671	244	166	1 389	43	1 339	71	61	8 946
1998	3 138	2 513	230	169	1 338	45	1 425	77	96	9 031
1999	3 071	2 506	200	187	1 168	43	1 131	86	95	8 487
2000	3 811	2 441	243	198	1 581	64	1 655	151	118	10 262
2001	5 316	2 912	280	226	1 659	54	1 584	126	103	12 260
2002	4 637	2 523	323	218	1 430	43	1 461	144	111	10 890
2003	6 827	3 248	580	445	1 998	92	2 611	196	168	16 165

Sources: Stats SA, *Documented immigrants in South Africa* (Statistical release P0351.4), *Tourism and migration* (Statistical release P0351) and *Tourism* (Report No. 03-51-02)

As from February 2004, statistics on self-declared emigrants are no longer collected due to the Immigration Act, 2002 (Act No. 13 of 2002).

Emigration in this context refers to South Africans leaving the country permanently. These figures are obtained from South Africa's three international airports, Johannesburg, Cape Town and Durban.

5.3 Documented immigrants by occupation group, 1994-2003 (numbers)

	1994	1995	1996	1997	1998	1999	2000	2001	2002	2003
Professional occupations	1 103	798	843	551	449	378	331	524	576	499
Managerial and administrative occupations	490	374	461	418	424	258	241	258	381	416
Clerical and sales occupations	400	250	315	64	48	199	21	62	26	25
Transport and communication occupations	19	7	18	19	8	25	5	3	5	7
Service occupations	115	79	84	43	27	58	4	16	21	15
Farming and related occupations	20	5	4	2	0	48	4	0	2	0
Artisan and related occupations	184	103	117	93	52	169	15	10	14	10
Production and related workers	78	58	62	31	17	218	5	10	9	0
Occupations unspecified or n.e.c.	161	88	74	424	173	36	36	69	19	39
Not economically active	3 830	3 302	3 412	2 555	3 173	2 304	2 391	3 879	5 491	9 567
Total	6 398	5 064	5 407	4 103	4 371	3 669	3 053	4 832	6 545	10 578

Sources: Stats SA, *Documented immigrants in South Africa* (Statistical release P0351.4), *Tourism and migration* (Statistical release P0351) and *Tourism* (Report No. 03-51-02)

Statistics of documented immigrants are unavailable as from July 2004.

The immigration figures are obtained from all legal ports of entry into South Africa.

Africa refers to all the countries in Africa (both mainland and island countries).

5.4 Self-declared emigrants by occupation group, 1994-2003 (numbers)

	1994	1995	1996	1997	1998	1999	2000	2001	2002	2003
Professional occupations	1 960	1 679	1 970	1 924	1 968	1 855	2 439	2 929	2 689	3 370
Managerial and administrative occupations	638	664	737	703	787	680	891	954	1 146	1 218
Clerical and sales occupations	1 008	859	921	877	873	794	1 057	1 279	596	1 400
Transport and communication occupations	45	41	23	34	43	32	67	53	54	99
Service occupations	122	102	116	99	113	116	146	208	129	214
Farming and related occupations	14	26	26	29	34	16	34	33	25	25
Artisan and related occupations	402	319	339	327	323	257	289	304	253	297
Production and related workers	67	40	32	31	19	28	61	79	39	62
Occupations unspecified or n.e.c.	604	793	999	824	945	970	1 450	1 752	1 880	1 376
Not economically active	5 375	4 198	4 545	4 039	3 926	3 639	3 828	4 669	3 556	4 649
Total	10 235	8 725	9 708	8 946	9 031	8 487	10 262	12 260	10 890	16 165

Sources: Stats SA, *Documented immigrants in South Africa* (Statistical release P0351.4), *Tourism and migration* (Statistical release P0351) and *Tourism* (Report No. 03-51-02)

As from February 2004, statistics on self-declared emigrants are no longer collected due to the Immigration Act, 2002 (Act No. 13 of 2002).

Emigration in this context refers to South Africans leaving the country permanently. These figures are obtained from South Africa's three international airports, Johannesburg, Cape Town and Durban.

6

Labour statistics

Labour statistics

6.1	Population of working age (15-64 years) by gender and labour market status according to the official definition of unemployment, 2018-2022 (thousands)	42
6.2	Population of working age (15-64 years) by population group and labour market status according to the official definition of unemployment, 2018-2022 (thousands)	45
6.3	The employed (15-64 years) by main occupation and province, 2018-2022 (thousands)	50
6.4	The employed (15-64 years) by main industry and province, 2018-2022 (thousands)	62
6.5	Number of employees and gross earnings by industry, 2021	72
6.6	Average monthly earnings, at current prices, by industry, 2021 (Rands)	75

Statistics South Africa has revised the *Quarterly labour force survey* (QLFS) series from Quarter 3: 2013 backwards to reflect the new population estimates from the Census 2011. The resulting estimates are comparable for the entire series to date.

Due to rounding, numbers do not necessarily add up to totals.

¹ Includes employers, employees and self-employed.

† For numbers of 10 000 or less the sample size is too small for reliable estimates.

6.1 Population of working age (15-64 years) by gender and labour market status according to the official definition of unemployment, 2018-2022 (thousands)

		Economically active				Not economically active	
Gender: Male		Workers	Unemployed	Total	Unemployment rate (%)		Total
2018	Mar	9 155	3 065	12 220	25,1	6 410	18 630
	Jun	9 154	3 097	12 251	25,3	6 459	18 710
	Sep	9 156	3 194	12 349	25,9	6 440	18 790
	Dec	9 279	3 113	12 392	25,1	6 475	18 867
2019	Mar	9 100	3 219	12 319	26,1	6 625	18 944
	Jun	9 180	3 406	12 585	27,1	6 436	19 022
	Sep	9 133	3 491	12 624	27,7	6 475	19 099
	Dec	9 201	3 431	12 632	27,2	6 542	19 174
2020	Mar	9 149	3 607	12 755	28,3	6 494	19 249
	Jun	7 978	2 258	10 236	22,1	9 089	19 325
	Sep	8 281	3 480	11 761	29,6	7 639	19 400
	Dec	8 432	3 789	12 221	31,0	7 253	19 474
2021	Mar	8 404	3 841	12 245	31,4	7 303	19 548
	Jun	8 462	4 047	12 508	32,4	7 114	19 623
	Sep	8 130	3 986	12 116	32,9	7 582	19 698
	Dec	8 270	4 046	12 316	32,8	7 456	19 771
2022	Mar	8 407	4 137	12 544	33,0	7 302	19 846
	Jun	8 642	4 185	12 827	32,6	7 093	19 920

6.1 Population of working age (15-64 years) by gender and labour market status according to the official definition of unemployment, 2018-2022 (thousands) (cont.)

		Economically active					
Gender: Female		Workers	Unemployed	Total	Unemployment rate (%)	Not economically active	Total
2018	Mar	7 222	2 915	10 138	28,8	8 911	19 048
	Jun	7 134	2 986	10 119	29,5	9 002	19 122
	Sep	7 225	3 016	10 240	29,4	8 955	19 195
	Dec	7 250	3 027	10 276	29,5	8 991	19 267
2019	Mar	7 192	2 982	10 174	29,3	9 165	19 339
	Jun	7 133	3 250	10 383	31,3	9 029	19 411
	Sep	7 242	3 243	10 485	30,9	8 999	19 483
	Dec	7 220	3 295	10 514	31,3	9 039	19 554
2020	Mar	7 234	3 463	10 697	32,4	8 928	19 625
	Jun	6 170	2 037	8 207	24,8	11 489	19 696
	Sep	6 410	3 053	9 463	32,3	10 304	19 767
	Dec	6 592	3 445	10 036	34,3	9 800	19 837
2021	Mar	6 591	3 401	9 992	34,0	9 914	19 907
	Jun	6 480	3 779	10 259	36,8	9 717	19 977
	Sep	6 152	3 657	9 810	37,3	10 237	20 047
	Dec	6 274	3 876	10 150	38,2	9 967	20 117
2022	Mar	6 507	3 725	10 232	36,4	9 955	20 187
	Jun	6 920	3 809	10 729	35,5	9 528	20 257

6.1 Population of working age (15-64 years) by gender and labour market status according to the official definition of unemployment, 2018-2022 (thousands) (concl.)

		Economically active					
Gender: Total		Workers	Unemployed	Total	Unemployment rate (%)	Not economically active	Total
2018	Mar	16 378	5 980	22 358	26,7	15 320	37 678
	Jun	16 288	6 083	22 370	27,2	15 462	37 832
	Sep	16 380	6 209	22 589	27,5	15 395	37 985
	Dec	16 529	6 139	22 668	27,1	15 466	38 134
2019	Mar	16 291	6 201	22 492	27,6	15 791	38 283
	Jun	16 313	6 655	22 968	29,0	15 465	38 433
	Sep	16 375	6 734	23 109	29,1	15 474	38 582
	Dec	16 420	6 726	23 146	29,1	15 581	38 727
2020	Mar	16 383	7 070	23 452	30,1	15 422	38 874
	Jun	14 148	4 295	18 443	23,3	20 578	39 021
	Sep	14 691	6 533	21 224	30,8	17 944	39 167
	Dec	15 024	7 233	22 257	32,5	17 054	39 311
2021	Mar	14 995	7 242	22 237	32,6	17 218	39 455
	Jun	14 942	7 826	22 768	34,4	16 832	39 599
	Sep	14 282	7 643	21 925	34,9	17 820	39 745
	Dec	14 544	7 921	22 466	35,3	17 423	39 888
2022	Mar	14 914	7 862	22 776	34,5	17 257	40 033
	Jun	15 562	7 994	23 556	33,9	16 621	40 177

6.2 Population of working age (15-64 years) by population group and labour market status according to the official definition of unemployment, 2018-2022 (thousands)

Population group: Black African		Economically active			Unemployment rate (%)	Not economically active	Total
		Workers	Unemployed	Total			
2018	Mar	12 223	5 259	17 481	30,1	12 768	30 249
	Jun	12 172	5 337	17 509	30,5	12 891	30 399
	Sep	12 265	5 533	17 798	31,1	12 752	30 550
	Dec	12 461	5 446	17 908	30,4	12 789	30 697
2019	Mar	12 201	5 513	17 714	31,1	13 130	30 844
	Jun	12 250	5 951	18 201	32,7	12 791	30 992
	Sep	12 262	5 974	18 236	32,8	12 903	31 140
	Dec	12 365	5 934	18 298	32,4	12 986	31 284
2020	Mar	12 317	6 299	18 616	33,8	12 813	31 429
	Jun	10 555	3 770	14 325	26,3	17 250	31 575
	Sep	11 015	5 815	16 830	34,6	14 889	31 720
	Dec	11 228	6 468	17 696	36,5	14 169	31 865
2021	Mar	11 205	6 488	17 693	36,7	14 314	32 007
	Jun	11 264	6 976	18 240	38,2	13 912	32 152
	Sep	10 699	6 735	17 434	38,6	14 865	32 299
	Dec	10 875	6 970	17 845	39,1	14 598	32 442
2022	Mar	11 208	7 039	18 247	38,6	14 342	32 589
	Jun	11 789	7 159	18 948	37,8	13 786	32 734

6.2 Population of working age (15-64 years) by population group and labour market status according to the official definition of unemployment, 2018-2022 (thousands) (cont.)

Population group: Coloured		Economically active				Unemployment rate (%)	Not economically active	Total
		Workers	Unemployed	Total				
2018	Mar	1 731	510	2 240	22,7	1 193	3 434	
	Jun	1 716	520	2 236	23,3	1 207	3 443	
	Sep	1 700	473	2 172	21,8	1 279	3 452	
	Dec	1 696	466	2 162	21,6	1 298	3 460	
2019	Mar	1 711	489	2 201	22,2	1 268	3 468	
	Jun	1 687	489	2 175	22,5	1 302	3 477	
	Sep	1 719	529	2 248	23,5	1 237	3 485	
	Dec	1 680	556	2 235	24,9	1 257	3 493	
2020	Mar	1 667	526	2 193	24,0	1 307	3 500	
	Jun	1 412	332	1 744	19,0	1 764	3 508	
	Sep	1 448	446	1 893	23,5	1 623	3 517	
	Dec	1 528	527	2 055	25,7	1 468	3 523	
2021	Mar	1 513	510	2 023	25,2	1 508	3 531	
	Jun	1 416	565	1 981	28,5	1 556	3 537	
	Sep	1 391	606	1 997	30,3	1 547	3 543	
	Dec	1 453	618	2 072	29,8	1 479	3 550	
2022	Mar	1 525	532	2 057	25,9	1 499	3 556	
	Jun	1 531	577	2 108	27,4	1 455	3 562	

6.2 Population of working age (15-64 years) by population group and labour market status according to the official definition of unemployment, 2018-2022 (thousands) (cont.)

		Economically active				Not economically active	
Population group:		Workers	Unemployed	Total	Unemployment rate (%)		Total
Indian or Asian							
2018	Mar	530	71	602	11,8	399	1 000
	Jun	547	63	610	10,4	392	1 003
	Sep	534	60	594	10,1	411	1 005
	Dec	524	74	598	12,4	409	1 007
2019	Mar	524	67	591	11,4	418	1 009
	Jun	530	67	597	11,2	414	1 011
	Sep	535	82	617	13,3	396	1 013
	Dec	523	85	608	13,9	407	1 016
2020	Mar	535	80	615	13,0	402	1 018
	Jun	488	82	571	14,4	449	1 020
	Sep	478	108	586	18,4	436	1 022
	Dec	512	68	580	11,8	444	1 024
2021	Mar	496	87	583	14,9	444	1 026
	Jun	487	118	605	19,5	423	1 029
	Sep	445	125	571	22,0	460	1 031
	Dec	423	161	584	27,5	449	1 033
2022	Mar	499	103	601	17,1	433	1 035
	Jun	543	99	643	15,5	394	1 037

6.2 Population of working age (15-64 years) by population group and labour market status according to the official definition of unemployment, 2018-2022 (thousands) (cont.)

		Economically active					
Population group:		Workers	Unemployed	Total	Unemployment rate (%)	Not economically active	Total
White							
2018	Mar	1 894	141	2 035	6,9	960	2 995
	Jun	1 853	162	2 015	8,0	972	2 987
	Sep	1 881	144	2 025	7,1	953	2 979
	Dec	1 847	153	2 000	7,6	970	2 970
2019	Mar	1 855	131	1 986	6,6	976	2 961
	Jun	1 845	148	1 994	7,4	959	2 953
	Sep	1 859	148	2 007	7,4	937	2 944
	Dec	1 853	152	2 005	7,6	931	2 935
2020	Mar	1 863	164	2 027	8,1	899	2 926
	Jun	1 693	111	1 803	6,1	1 114	2 918
	Sep	1 750	164	1 914	8,6	994	2 909
	Dec	1 756	170	1 926	8,8	973	2 899
2021	Mar	1 781	157	1 938	8,1	952	2 891
	Jun	1 774	167	1 941	8,6	940	2 881
	Sep	1 747	177	1 924	9,2	948	2 872
	Dec	1 793	172	1 965	8,8	897	2 863
2022	Mar	1 683	188	1 871	10,0	982	2 853
	Jun	1 699	159	1 858	8,6	986	2 844

6.2 Population of working age (15-64 years) by population group and labour market status according to the official definition of unemployment, 2018-2022 (thousands) (concl.)

		Economically active				Not economically active	
Population group:		Workers	Unemployed	Total	Unemployment rate (%)		Total
Total							
2018	Mar	16 378	5 980	22 358	26,7	15 320	37 678
	Jun	16 288	6 083	22 370	27,2	15 462	37 832
	Sep	16 380	6 209	22 589	27,5	15 395	37 985
	Dec	16 529	6 139	22 668	27,1	15 466	38 134
2019	Mar	16 291	6 201	22 492	27,6	15 791	38 283
	Jun	16 313	6 655	22 968	29,0	15 465	38 433
	Sep	16 375	6 734	23 109	29,1	15 474	38 582
	Dec	16 420	6 726	23 146	29,1	15 581	38 727
2020	Mar	16 383	7 070	23 452	30,1	15 422	38 874
	Jun	14 148	4 295	18 443	23,3	20 578	39 021
	Sep	14 691	6 533	21 224	30,8	17 944	39 167
	Dec	15 024	7 233	22 257	32,5	17 054	39 311
2021	Mar	14 995	7 242	22 237	32,6	17 218	39 455
	Jun	14 942	7 826	22 768	34,4	16 832	39 599
	Sep	14 282	7 643	21 925	34,9	17 820	39 745
	Dec	14 544	7 921	22 466	35,3	17 423	39 888
2022	Mar	14 914	7 862	22 776	34,5	17 257	40 033
	Jun	15 562	7 994	23 556	33,9	16 621	40 177

6.3 The employed¹ (15-64 years) by main occupation and province, 2018-2022 (thousands)

Main occupation= Legislators, senior officials and managers		Eastern Cape	Free State	Gauteng	KwaZulu- Natal	Limpopo	Mpuma- langa	North West	Northern Cape	Western Cape	South Africa
2018	Mar	110	45	640	174	64	51	58	14	267	1 422
	Jun	101	49	650	187	56	57	43	17	256	1 416
	Sep	105	40	657	172	64	65	53	18	259	1 431
	Dec	99	49	663	166	60	73	53	19	263	1 444
2019	Mar	96	44	706	169	55	75	51	18	251	1 463
	Jun	113	54	714	171	76	70	41	20	267	1 528
	Sep	92	53	628	182	66	67	45	18	284	1 436
	Dec	90	44	645	168	73	65	58	21	277	1 440
2020	Mar	95	52	675	169	55	55	58	26	258	1 444
	Jun	81	49	619	151	42	66	38	19	225	1 288
	Sep	80	45	588	169	48	74	48	22	240	1 313
	Dec	87	45	614	138	48	68	59	18	247	1 324
2021	Mar	104	38	597	137	47	66	59	20	273	1 342
	Jun	97	67	670	134	48	59	62	†	259	1 406
	Sep	73	60	635	141	43	59	58	†	264	1 342
	Dec	75	61	524	164	49	53	52	†	274	1 257
2022	Mar	61	44	550	135	37	68	43	25	278	1 241
	Jun	79	52	503	150	69	56	27	19	297	1 253

Source: Stats SA, Quarterly labour force survey (statistical release P0211)

6.3 The employed¹ (15-64 years) by main occupation and province, 2018-2022 (thousands) (cont.)

Main occupation=		Eastern	Free	Gauteng	KwaZulu-	Limpopo	Mpuma-	North	Northern	Western	South
Professionals		Cape	State		Natal		langa	West	Cape	Cape	Africa
2018	Mar	50	30	380	129	48	43	30	12	150	873
	Jun	62	28	333	139	66	43	43	13	151	878
	Sep	77	32	392	147	59	38	40	†	157	948
	Dec	56	31	381	120	45	35	33	12	165	878
2019	Mar	46	25	384	128	56	37	43	†	156	884
	Jun	58	34	356	103	55	36	40	17	141	840
	Sep	49	37	422	120	58	43	45	19	167	962
	Dec	56	40	428	118	62	46	45	13	162	970
2020	Mar	53	51	396	132	57	43	46	12	159	948
	Jun	63	44	443	147	78	59	43	13	182	1 072
	Sep	60	40	466	122	66	52	39	†	164	1 019
	Dec	53	35	413	129	66	43	47	14	153	952
2021	Mar	55	33	447	122	62	37	49	13	172	990
	Jun	57	33	454	122	53	37	46	†	185	992
	Sep	64	26	417	117	55	31	22	†	212	946
	Dec	57	36	370	154	46	26	42	†	200	933
2022	Mar	78	33	415	129	38	41	33	†	222	997
	Jun	79	30	507	160	73	53	32	14	217	1 166

6.3 The employed¹ (15-64 years) by main industry and province, 2018-2022 (thousands) (cont.)

Main occupation= Technical and associate professionals		Eastern Cape	Free State	Gauteng	KwaZulu-Natal	Limpopo	Mpumalanga	North West	Northern Cape	Western Cape	South Africa
2018	Mar	138	54	494	248	116	87	73	24	178	1 415
	Jun	140	62	542	245	101	98	65	29	166	1 448
	Sep	115	49	517	229	106	91	79	18	195	1 399
	Dec	128	66	516	235	120	108	76	27	198	1 474
2019	Mar	137	50	534	214	109	105	63	23	213	1 448
	Jun	123	51	505	244	108	94	66	25	221	1 436
	Sep	123	50	519	221	107	83	67	24	202	1 395
	Dec	124	47	520	207	100	92	74	22	216	1 401
2020	Mar	119	41	529	193	110	87	74	24	180	1 357
	Jun	108	36	424	206	81	78	75	17	187	1 213
	Sep	114	61	442	231	97	77	85	21	189	1 318
	Dec	111	58	444	239	93	97	91	27	193	1 352
2021	Mar	113	49	473	236	115	99	78	37	200	1 399
	Jun	121	43	449	233	101	86	77	16	193	1 320
	Sep	107	60	398	206	74	77	49	29	235	1 235
	Dec	114	52	446	192	78	86	64	19	214	1 265
2022	Mar	144	56	454	258	94	91	61	22	241	1 421
	Jun	104	68	468	227	78	98	55	17	255	1 369

6.3 The employed¹ (15-64 years) by main industry and province, 2018-2022 (thousands) (cont.)

Main industry=Clerks		Eastern Cape	Free State	Gauteng	KwaZulu-Natal	Limpopo	Mpumalanga	North West	Northern Cape	Western Cape	South Africa
2018	Mar	136	66	644	257	121	96	90	39	297	1 746
	Jun	137	76	631	247	126	87	72	34	295	1 704
	Sep	148	70	607	257	123	82	67	43	291	1 689
	Dec	148	69	639	252	108	82	78	35	292	1 704
2019	Mar	131	79	635	231	103	94	72	37	297	1 679
	Jun	121	65	679	245	114	86	75	27	296	1 708
	Sep	132	60	660	244	118	91	68	26	298	1 696
	Dec	144	70	699	250	94	84	68	29	297	1 733
2020	Mar	127	69	658	247	93	87	97	25	272	1 674
	Jun	113	77	541	215	89	63	89	25	259	1 470
	Sep	113	68	582	241	83	80	87	22	251	1 526
	Dec	119	63	551	240	87	78	107	31	302	1 579
2021	Mar	119	69	613	217	98	67	99	26	286	1 595
	Jun	108	81	543	216	77	80	92	27	250	1 474
	Sep	111	72	505	220	71	85	80	34	234	1 411
	Dec	84	75	520	228	87	58	57	30	232	1 371
2022	Mar	101	81	507	218	93	60	62	47	296	1 466
	Jun	126	85	588	235	105	92	81	39	248	1 601

Source: Stats SA, Quarterly labour force survey (statisticalrelease P0211)

6.3 The employed¹ (15-64 years) by main Occupation and province, 2018-2022 (thousands) (cont.)

Main occupation=Service workers and, shop and market sales workers		Eastern Cape	Free State	Gauteng	KwaZulu-Natal	Limpopo	Mpumalanga	North West	Northern Cape	Western Cape	South Africa
2018	Mar	241	136	761	474	247	189	166	46	432	2 692
	Jun	248	126	791	441	210	169	178	43	429	2 635
	Sep	223	114	808	449	236	171	168	38	445	2 653
	Dec	254	130	810	446	237	178	162	42	428	2 687
2019	Mar	254	126	810	436	252	180	172	44	394	2 667
	Jun	260	148	772	456	276	207	140	41	387	2 687
	Sep	254	144	805	499	252	227	158	52	385	2 777
	Dec	257	138	779	490	248	222	158	56	391	2 738
2020	Mar	263	128	771	498	224	235	149	62	423	2 753
	Jun	212	111	665	405	198	194	133	59	333	2 302
	Sep	210	125	672	438	187	197	128	66	337	2 400
	Dec	224	141	692	450	199	178	137	72	385	2 476
2021	Mar	244	134	682	456	196	204	137	55	375	2 483
	Jun	220	105	658	424	180	178	145	55	357	2 322
	Sep	223	95	645	379	170	162	130	54	289	2 149
	Dec	245	102	731	409	179	166	133	49	302	2 316
2022	Mar	255	127	779	418	258	177	164	41	264	2 483
	Jun	248	128	759	462	264	181	144	60	336	2 582

6.3 The employed¹ (15-64 years) by main Occupation and province, 2018-2022 (thousands) (cont.)

Main occupation=Skilled agricultural and fishery workers		Eastern Cape	Free State	Gauteng	KwaZulu-Natal	Limpopo	Mpumalanga	North West	Northern Cape	Western Cape	South Africa
2018	Mar	†	†	†	11	†	†	†	†	†	62
	Jun	†	†	12	12	†	12	†	†	†	64
	Sep	11	†	†	12	†	†	†	†	†	58
	Dec	†	†	11	17	†	†	†	†	†	66
2019	Mar	†	†	†	13	†	†	..	†	†	47
	Jun	†	†	†	12	†	†	†	†	†	54
	Sep	16	†	†	12	†	†	†	†	14	66
	Dec	†	†	†	28	13	†	†	†	†	79
2020	Mar	†	†	†	13	†	†	†	†	12	69
	Jun	†	†	†	11	†	†	†	†	13	67
	Sep	†	†	†	†	11	†	†	†	†	61
	Dec	†	†	†	20	†	†	†	†	17	85
2021	Mar	†	†	†	11	13	†	†	†	14	62
	Jun	†	†	†	†	†	†	†	†	†	45
	Sep	†	†	†	11	†	†	†	†	†	63
	Dec	†	†	14	21	†	†	†	†	..	68
2022	Mar	†	†	13	12	†	†	†	†	†	68
	Jun	†	†	†	†	15	†	†	†	14	72

Source: Stats SA, Quarterly labour force survey (statistical release P0211)

6.3 The employed¹ (15-64 years) by main occupation and province, 2018-2022 (thousands) (cont.)

Main occupation=Craft and related trades workers		Eastern Cape	Free State	Gauteng	KwaZulu-Natal	Limpopo	Mpumalanga	North West	Northern Cape	Western Cape	South Africa
2018	Mar	145	114	608	269	212	197	123	37	287	1 994
	Jun	157	104	601	285	217	196	124	35	289	2 007
	Sep	164	108	586	308	215	205	98	47	288	2 018
	Dec	148	98	629	301	234	220	116	43	284	2 073
2019	Mar	134	100	569	317	217	204	112	32	285	1 972
	Jun	140	96	561	325	203	204	114	26	289	1 957
	Sep	162	82	557	294	221	198	119	31	249	1 912
	Dec	156	92	527	294	213	185	106	47	287	1 907
2020	Mar	160	78	555	286	248	182	114	43	273	1 940
	Jun	108	62	441	241	162	147	117	27	215	1 521
	Sep	125	57	437	249	189	169	97	32	221	1 575
	Dec	102	71	460	250	207	189	97	34	251	1 660
2021	Mar	129	66	476	250	164	177	97	32	240	1 630
	Jun	91	61	437	250	195	167	130	29	238	1 599
	Sep	105	69	396	263	161	157	118	21	235	1 526
	Dec	94	73	425	250	183	156	88	25	225	1 519
2022	Mar	103	79	477	276	189	158	114	28	188	1 613
	Jun	123	84	542	258	169	168	104	27	198	1 673

6.3 The employed¹ (15-64 years) by main occupation and province, 2018-2022 (thousands) (cont.)

Main occupation=Plant and machine operators and assemblers		Eastern Cape	Free State	Gauteng	KwaZulu-Natal	Limpopo	Mpumalanga	North West	Northern Cape	Western Cape	South Africa
2018	Mar	100	64	435	263	93	112	95	27	170	1 359
	Jun	88	65	430	264	96	121	93	28	180	1 364
	Sep	99	70	415	253	98	133	110	29	176	1 382
	Dec	87	79	407	285	118	127	102	25	165	1 394
2019	Mar	99	80	390	266	118	126	98	29	175	1 380
	Jun	95	82	374	259	117	129	118	28	186	1 386
	Sep	87	71	372	282	101	125	91	27	187	1 343
	Dec	96	63	378	284	102	138	109	19	185	1 374
2020	Mar	93	59	382	291	102	144	103	19	193	1 385
	Jun	100	44	342	237	85	136	98	19	156	1 217
	Sep	91	62	320	242	95	127	107	17	155	1 216
	Dec	106	52	363	262	98	112	87	17	160	1 257
2021	Mar	109	55	332	270	107	107	109	24	173	1 285
	Jun	89	60	358	242	109	133	91	18	141	1 242
	Sep	96	57	379	237	102	129	77	17	125	1 219
	Dec	115	69	347	235	88	108	85	18	171	1 236
2022	Mar	117	83	372	234	106	130	61	24	197	1 324
	Jun	118	70	361	272	116	130	86	27	161	1 340

6.3 The employed¹ (15-64 years) by main occupation and province, 2018-2022 (thousands) (cont.)

Main occupation= Elementary occupations		Eastern Cape	Free State	Gauteng	KwaZulu- Natal	Limpopo	Mpuma- langa	North West	Northern Cape	Western Cape	South Africa
2018	Mar	386	241	799	619	432	322	302	100	620	3 823
	Jun	373	219	765	626	458	339	307	100	588	3 775
	Sep	361	216	787	638	480	354	308	97	572	3 814
	Dec	344	207	804	635	459	329	293	92	617	3 780
2019	Mar	317	212	826	632	407	301	302	108	631	3 737
	Jun	370	203	810	628	417	328	271	97	598	3 721
	Sep	377	216	797	623	427	309	312	102	595	3 759
	Dec	348	207	805	661	414	324	309	109	585	3 762
2020	Mar	375	201	838	670	408	320	276	105	615	3 806
	Jun	309	152	723	551	333	294	245	61	522	3 191
	Sep	331	196	698	556	406	299	297	80	522	3 384
	Dec	331	194	714	578	401	299	268	81	529	3 393
2021	Mar	334	192	692	589	378	300	258	96	478	3 317
	Jun	378	208	763	620	411	345	291	78	513	3 605
	Sep	379	220	779	565	396	315	271	85	525	3 534
	Dec	386	193	823	576	397	316	295	96	548	3 630
2022	Mar	340	220	797	525	369	288	337	104	512	3 492
	Jun	368	224	818	538	425	325	335	87	527	3 648

6.3 The employed¹ (15-64 years) by main occupation and province, 2018-2022 (thousands) (cont.)

Main occupation= Domestic workers		Eastern Cape	Free State	Gauteng	KwaZulu- Natal	Limpopo	Mpuma- langa	North West	Northern Cape	Western Cape	South Africa
2018	Mar	84	62	298	172	96	89	49	16	125	991
	Jun	88	58	301	172	100	91	52	17	118	996
	Sep	87	72	296	169	89	87	56	22	105	984
	Dec	103	76	303	190	90	85	56	23	103	1 029
2019	Mar	88	85	299	192	82	82	58	19	108	1 013
	Jun	102	73	285	192	84	86	49	17	106	995
	Sep	109	78	290	196	81	86	52	21	113	1 027
	Dec	106	76	309	165	83	85	62	18	109	1 013
2020	Mar	91	70	323	171	82	85	47	18	117	1 004
	Jun	64	55	248	124	69	65	32	11	77	745
	Sep	82	65	285	133	84	79	36	†	88	864
	Dec	91	75	288	140	72	76	48	†	99	897
2021	Mar	86	63	279	138	66	70	40	†	98	848
	Jun	69	64	276	172	74	73	38	13	113	892
	Sep	54	57	279	158	66	80	40	19	103	856
	Dec	69	61	331	195	68	75	35	19	97	949
2022	Mar	84	52	222	166	72	65	35	17	94	808
	Jun	90	59	233	174	77	60	52	22	90	858

6.3 The employed¹ (15-64 years) by main industry and province, 2018-2022 (thousands) (concl.)

Main occupation=Other		Eastern Cape	Free State	Gauteng	KwaZulu-Natal	Limpopo	Mpumalanga	North West	Northern Cape	Western Cape	South Africa
2018	Mar	†	†
	Jun	†	†	†
	Sep	†	†
	Dec
2019	Mar	†	†
	Jun	†	†
	Sep	†	†
	Dec	†	†
2020	Mar	†	†	†
	Jun	†	†	30	†	†	†	..	†	11	62
	Sep	†	†	†	†	15
	Dec	†	†	25	†	†	†	†	47
2021	Mar	†	†	26	†	†	†	†	†	..	45
	Jun	†	†	30	†	†	†	†	†	†	46
	Sep
	Dec
2022	Mar	†	†
	Jun

6.3 The employed¹ (15-64 years) by main occupation and province, 2018-2022 (thousands) (concl.)

Main occupation=Total		Eastern Cape	Free State	Gauteng	KwaZulu-Natal	Limpopo	Mpumalanga	North West	Northern Cape	Western Cape	South Africa
2018	Mar	1 397	814	5 069	2 617	1 441	1 197	992	321	2 530	16 378
	Jun	1 402	788	5 055	2 620	1 436	1 212	977	317	2 480	16 288
	Sep	1 390	774	5 077	2 635	1 478	1 231	979	323	2 494	16 380
	Dec	1 375	806	5 163	2 648	1 477	1 245	973	322	2 520	16 529
2019	Mar	1 308	803	5 162	2 598	1 401	1 209	970	321	2 520	16 291
	Jun	1 388	808	5 066	2 635	1 456	1 243	918	301	2 497	16 313
	Sep	1 402	795	5 060	2 674	1 435	1 233	960	322	2 494	16 375
	Dec	1 384	785	5 098	2 664	1 400	1 244	992	335	2 518	16 420
2020	Mar	1 382	756	5 434	2 672	1 387	1 246	969	336	2 501	16 383
	Jun	1 169	638	4 473	2 297	1 151	1 112	874	255	2 179	14 148
	Sep	1 212	723	4 506	2 389	1 266	1 161	930	287	2 216	14 691
	Dec	1 236	745	4 570	2 454	1 281	1 148	944	308	2 338	15 024
2021	Mar	1 301	703	4 626	2 429	1 248	1 133	933	313	2 309	14 995
	Jun	1 235	723	4 648	2 421	1 257	1 166	979	256	2 256	14 942
	Sep	1 216	720	4 448	2 297	1 145	1 104	851	275	2 225	14 282
	Dec	1 247	727	4 524	2 424	1 184	1 052	858	264	2 263	14 544
2022	Mar	1 293	781	4 586	2 371	1 265	1 082	917	321	2 298	14 914
	Jun	1 343	807	4 787	2 481	1 391	1 167	924	318	2 344	15 562

6.4 The employed¹ (15-64 years) by main industry and province, 2018-2022 (thousands)

Main industry: Agriculture, hunting, forestry and fishing		Eastern Cape	Free State	Gauteng	KwaZulu- Natal	Limpopo	Mpuma- langa	North West	Northern Cape	Western Cape	South Africa
2018	Mar	91	92	29	115	130	87	47	48	208	847
	Jun	97	71	32	122	158	94	43	44	181	843
	Sep	88	74	34	121	148	91	60	42	183	842
	Dec	78	57	31	136	138	96	62	39	213	849
2019	Mar	84	60	31	134	124	76	62	41	225	837
	Jun	97	60	33	134	141	101	61	33	182	842
	Sep	96	56	40	143	140	98	59	33	215	880
	Dec	77	66	30	162	140	92	48	36	236	885
2020	Mar	80	62	30	133	126	86	51	41	255	865
	Jun	67	57	32	126	142	108	45	24	197	799
	Sep	98	49	41	132	142	117	66	28	137	808
	Dec	101	54	33	141	136	100	40	28	178	810
2021	Mar	101	55	43	130	136	113	40	39	136	792
	Jun	82	74	35	137	153	95	70	31	185	862
	Sep	107	72	28	113	133	92	52	34	197	829
	Dec	108	66	41	132	124	106	71	41	178	868
2022	Mar	93	84	28	85	155	95	51	49	203	844
	Jun	110	86	36	91	170	104	54	35	187	874

6.4 The employed¹ (15-64 years) by main industry and province, 2018-2022 (thousands) (cont.)

Main industry: Mining and quarrying		Eastern Cape	Free State	Gauteng	KwaZulu-Natal	Limpopo	Mpumalanga	North West	Northern Cape	Western Cape	South Africa
2018	Mar	..	18	74	†	81	66	125	24	†	397
	Jun	†	23	72	†	88	72	147	23	†	435
	Sep	†	24	61	†	89	64	133	23	†	406
	Dec	†	24	65	†	106	73	130	27	†	438
2019	Mar	†	17	50	†	100	71	136	28	†	417
	Jun	..	20	50	†	86	68	122	26	†	381
	Sep	†	15	65	†	89	78	130	29	†	419
	Dec	†	17	73	†	84	80	134	33	†	430
2020	Mar	†	20	83	†	93	69	125	35	†	436
	Jun	†	18	53	†	76	67	122	27	†	373
	Sep	†	16	61	†	89	65	140	34	†	419
	Dec	†	13	59	†	90	61	120	32	†	384
2021	Mar	†	16	61	†	95	62	123	28	†	395
	Jun	†	18	73	†	98	47	138	18	†	398
	Sep	†	19	34	†	86	50	124	20	†	345
	Dec	†	23	53	†	76	65	126	†	†	370
2022	Mar	..	18	93	†	67	78	109	30	†	406
	Jun	†	21	81	†	79	71	120	27	†	407

6.4 The employed¹ (15-64 years) by main industry and province, 2018-2022 (thousands) (cont.)

Main industry: Manufacturing		Eastern Cape	Free State	Gauteng	KwaZulu- Natal	Limpopo	Mpuma- langa	North West	Northern Cape	Western Cape	South Africa
2018	Mar	144	58	650	371	88	98	74	15	351	1 849
	Jun	127	58	612	350	80	117	49	11	339	1 744
	Sep	118	65	627	346	79	120	54	13	297	1 719
	Dec	123	71	637	338	91	109	55	17	325	1 766
2019	Mar	113	77	620	348	86	97	75	17	346	1 780
	Jun	119	62	627	352	81	101	72	17	357	1 789
	Sep	134	59	627	333	84	104	74	15	330	1 760
	Dec	127	55	624	338	81	103	70	17	305	1 720
2020	Mar	127	53	616	324	96	105	62	14	309	1 706
	Jun	115	54	534	249	65	97	63	†	273	1 456
	Sep	107	48	504	272	81	91	44	†	303	1 460
	Dec	102	49	525	272	76	90	51	14	311	1 491
2021	Mar	108	48	510	277	69	82	72	20	311	1 497
	Jun	115	45	505	253	72	106	44	11	265	1 415
	Sep	126	31	459	271	60	98	63	11	283	1 402
	Dec	115	33	454	228	60	78	39	†	305	1 316
2022	Mar	141	52	554	285	67	73	53	13	341	1 579
	Jun	157	51	502	294	71	80	59	14	277	1 507

6.4 The employed¹ (15-64 years) by main industry and province, 2018-2022 (thousands) (cont.)

Main industry: Electricity, gas and water supply		Eastern Cape	Free State	Gauteng	KwaZulu-Natal	Limpopo	Mpumalanga	North West	Northern Cape	Western Cape	South Africa
2018	Mar	†	†	39	19	†	47	†	†	†	143
	Jun	†	†	51	17	11	41	11	†	†	161
	Sep	†	11	51	14	†	42	†	†	13	156
	Dec	†	†	37	†	15	37	†	†	†	134
2019	Mar	†	†	52	†	14	38	†	†	†	150
	Jun	†	12	53	12	12	40	†	†	11	151
	Sep	†	†	44	†	11	26	†	†	17	133
	Dec	12	†	31	11	†	28	†	†	16	120
2020	Mar	†	†	35	14	13	26	†	†	†	116
	Jun	†	†	35	16	13	19	†	†	†	113
	Sep	†	†	32	†	13	25	†	..	†	90
	Dec	†	12	30	†	†	26	†	†	†	99
2021	Mar	†	†	42	†	†	23	†	†	†	115
	Jun	†	†	45	†	11	40	†	†	†	118
	Sep	†	†	33	..	†	29	†	†	†	96
	Dec	†	†	20	11	†	27	†	82
2022	Mar	†	†	21	†	18	28	†	†	†	103
	Jun	†	†	21	13	†	34	†	†	†	104

6.4 The employed¹ (15-64 years) by main industry and province, 2018-2022 (thousands) (cont.)

Main industry: Construction		Eastern Cape	Free State	Gauteng	KwaZulu- Natal	Limpopo	Mpuma- langa	North West	Northern Cape	Western Cape	South Africa
2018	Mar	154	59	419	211	146	105	96	26	214	1 431
	Jun	163	51	419	229	150	112	94	24	233	1 476
	Sep	172	64	413	238	163	115	79	25	233	1 502
	Dec	164	58	430	244	146	106	87	24	223	1 481
2019	Mar	136	56	375	230	137	101	65	18	220	1 339
	Jun	147	60	382	237	128	109	70	16	214	1 363
	Sep	161	46	383	238	142	107	56	20	185	1 339
	Dec	155	66	367	229	141	105	63	20	204	1 350
2020	Mar	169	57	382	222	142	101	59	24	188	1 343
	Jun	119	40	343	189	96	69	51	12	148	1 066
	Sep	109	53	305	192	115	70	53	16	167	1 080
	Dec	115	46	329	199	124	75	60	20	199	1 166
2021	Mar	120	30	315	184	96	80	64	11	179	1 079
	Jun	112	34	339	228	121	88	82	19	198	1 222
	Sep	122	33	307	227	137	69	60	†	192	1 157
	Dec	128	32	290	211	154	80	56	12	169	1 133
2022	Mar	116	38	251	203	142	80	67	20	156	1 073
	Jun	122	50	346	225	118	91	70	13	141	1 177

6.4 The employed¹ (15-64 years) by main industry and province, 2018-2022 (thousands) (cont.)

Main industry: Wholesale and retail trade		Eastern Cape	Free State	Gauteng	KwaZulu-Natal	Limpopo	Mpumalanga	North West	Northern Cape	Western Cape	South Africa
2018	Mar	286	176	1 004	467	328	261	197	48	510	3 276
	Jun	301	162	975	466	318	247	190	50	511	3 219
	Sep	309	141	979	511	354	262	197	50	501	3 305
	Dec	281	140	1 043	521	354	267	179	48	486	3 320
2019	Mar	265	155	1 066	534	325	258	191	46	506	3 345
	Jun	294	168	1 070	556	355	257	161	49	518	3 429
	Sep	298	179	1 025	557	349	256	186	47	513	3 408
	Dec	277	161	1 008	559	298	263	170	57	457	3 249
2020	Mar	269	170	1 019	585	288	265	176	65	483	3 320
	Jun	240	115	905	519	231	249	180	57	450	2 946
	Sep	249	160	914	524	248	250	178	43	443	3 008
	Dec	231	149	906	564	268	251	176	46	473	3 063
2021	Mar	244	159	909	543	227	235	175	40	447	2 979
	Jun	252	155	971	532	257	269	187	40	423	3 087
	Sep	198	163	899	480	226	235	160	46	370	2 778
	Dec	228	190	909	514	234	185	154	38	443	2 896
2022	Mar	229	181	950	472	274	209	224	45	412	2 994
	Jun	227	173	999	473	307	236	211	53	485	3 163

6.4 The employed¹ (15-64 years) by main industry and province, 2018-2022 (thousands) (cont.)

Main industry: Transport, storage and communication		Eastern Cape	Free State	Gauteng	KwaZulu- Natal	Limpopo	Mpuma- langa	North West	Northern Cape	Western Cape	South Africa
2018	Mar	70	35	383	178	58	52	33	†	141	960
	Jun	62	41	405	194	51	58	34	11	157	1 014
	Sep	71	35	389	176	51	67	33	14	160	996
	Dec	71	40	358	178	56	60	32	11	158	965
2019	Mar	82	42	389	184	66	69	45	14	133	1 025
	Jun	76	37	386	171	73	66	38	†	126	983
	Sep	61	40	358	192	64	63	37	†	152	975
	Dec	73	34	377	180	62	70	38	11	166	1 011
2020	Mar	81	34	363	189	57	65	30	†	169	995
	Jun	65	33	354	161	38	69	33	†	125	885
	Sep	59	42	324	168	47	67	35	†	131	878
	Dec	82	46	362	180	50	64	29	†	123	943
2021	Mar	81	35	333	168	70	48	30	†	128	903
	Jun	70	49	378	173	48	70	38	†	139	969
	Sep	78	48	381	163	47	68	28	†	147	964
	Dec	84	54	387	163	54	59	19	†	125	951
2022	Mar	72	37	348	174	53	64	27	11	175	960
	Jun	72	42	349	191	54	70	17	13	99	906

6.4 The employed¹ (15-64 years) by main industry and province, 2018-2022 (thousands) (cont.)

Main industry: Financial intermediation, insurance, real estate and business services		Eastern Cape	Free State	Gauteng	KwaZulu-Natal	Limpopo	Mpumalanga	North West	Northern Cape	Western Cape	South Africa
2018	Mar	134	91	1 018	323	141	117	117	26	436	2 402
	Jun	137	84	1 063	327	119	122	100	24	423	2 399
	Sep	132	71	1 112	347	120	143	98	22	456	2 502
	Dec	148	91	1 139	369	120	161	94	19	469	2 611
2019	Mar	127	77	1 168	335	101	155	89	20	444	2 516
	Jun	147	88	1 089	347	112	143	93	22	455	2 495
	Sep	137	83	1 105	337	101	158	93	21	457	2 492
	Dec	137	79	1 145	343	117	143	126	29	448	2 568
2020	Mar	141	66	1 152	338	123	150	106	20	422	2 517
	Jun	114	73	1 020	304	93	135	85	23	388	2 234
	Sep	150	78	1 075	309	119	145	110	27	421	2 434
	Dec	125	59	1 013	313	102	147	107	37	407	2 312
2021	Mar	157	72	1 063	355	119	152	96	31	483	2 527
	Jun	118	65	996	309	87	120	92	16	447	2 248
	Sep	133	88	1 047	303	91	130	93	21	481	2 386
	Dec	147	74	1 021	361	99	125	92	21	464	2 404
2022	Mar	139	64	1 048	318	94	115	103	24	427	2 332
	Jun	129	71	1 084	333	114	111	80	27	512	2 460

6.4 The employed¹ (15-64 years) by main industry and province, 2018-2022 (thousands) (cont.)

Main industry: Community, social and personal services		Eastern Cape	Free State	Gauteng	KwaZulu-Natal	Limpopo	Mpumalanga	North West	Northern Cape	Western Cape	South Africa
		2018	Mar	403	200	1 069	702	339	252	228	95
	Jun	402	202	1 040	684	327	238	231	105	462	3 692
	Sep	390	197	1 017	657	347	227	241	100	499	3 675
		390	219	1 029	605	329	229	237	104	484	3 624
2019	Mar	388	198	1 026	580	328	240	212	109	492	3 574
	Jun	381	210	1 020	593	352	248	227	101	491	3 622
	Sep	378	206	1 043	631	347	239	245	116	473	3 679
	Dec	396	201	1 038	624	360	258	267	107	542	3 792
2020	Mar	384	198	1 026	626	341	274	283	106	521	3 759
	Jun	346	175	836	561	296	217	240	84	489	3 244
	Sep	340	194	889	598	299	236	242	107	476	3 381
	Dec	365	222	907	589	324	243	282	106	513	3 551
2021	Mar	365	190	957	577	352	251	265	119	492	3 567
	Jun	376	195	912	563	310	238	269	98	441	3 401
	Sep	367	178	874	529	272	236	216	102	417	3 191
	Dec	333	171	920	551	286	227	224	106	448	3 264
2022	Mar	389	222	992	618	304	253	216	105	446	3 546
	Jun	402	224	1 040	646	373	285	226	109	516	3 821

6.4 The employed¹ (15-64 years) by main industry and province, 2018-2022 (thousands) (cont.)

Main industry: Private households		Eastern Cape	Free State	Gauteng	KwaZulu-Natal	Limpopo	Mpumalanga	North West	Northern Cape	Western Cape	South Africa
2018	Mar	111	77	376	225	121	111	70	20	165	1 275
	Jun	108	84	378	225	134	111	77	20	161	1 296
	Sep	104	92	384	217	118	101	76	27	147	1 267
	Dec	118	96	387	239	120	109	85	29	148	1 332
2019	Mar	107	112	378	232	120	103	84	25	139	1 301
	Jun	124	92	351	226	115	110	70	25	140	1 251
	Sep	127	100	366	231	108	106	74	30	144	1 286
	Dec	129	97	395	212	108	103	75	26	142	1 286
2020	Mar	122	89	418	233	107	105	72	24	145	1 316
	Jun	97	65	341	164	100	81	50	12	95	1 005
	Sep	95	81	351	184	114	94	61	15	125	1 121
	Dec	107	94	398	188	103	92	72	17	126	1 197
2021	Mar	111	93	383	186	78	89	59	11	118	1 127
	Jun	105	84	375	222	101	92	51	18	146	1 194
	Sep	79	82	381	206	82	97	50	24	128	1 130
	Dec	97	80	426	246	88	100	72	25	124	1 258
2022	Mar	108	76	298	204	92	87	62	20	125	1 072
	Jun	119	78	316	210	95	85	82	25	113	1 124

6.4 The employed¹ (15-64 years) by main industry and province, 2018-2022 (thousands) (concl.)

Main industry: Total		Eastern Cape	Free State	Gauteng	KwaZulu-Natal	Limpopo	Mpumalanga	North West	Northern Cape	Western Cape	South Africa
2018	Mar	1 397	814	5 069	2 617	1 441	1 197	992	321	2 530	16 378
	Jun	1 402	788	5 055	2 620	1 436	1 212	977	317	2 480	16 288
	Sep	1 390	774	5 077	2 635	1 478	1 231	979	323	2 494	16 380
	Dec	1 375	806	5 163	2 648	1 477	1 245	973	322	2 520	16 529
2019	Mar	1 308	803	5 162	2 598	1 401	1 209	970	321	2 520	16 291
	Jun	1 388	808	5 066	2 635	1 456	1 243	918	301	2 497	16 313
	Sep	1 402	795	5 060	2 674	1 435	1 233	960	322	2 494	16 375
	Dec	1 384	785	5 098	2 664	1 400	1 244	992	335	2 518	16 420
2020	Mar	1 382	756	5 134	2 672	1 387	1 246	969	336	2 501	16 383
	Jun	1 169	638	4 473	2 297	1 151	1 112	874	255	2 179	14 148
	Sep	1 212	723	4 506	2 389	1 266	1 161	930	287	2 216	14 691
	Dec	1 236	745	4 570	2 454	1 281	1 148	944	308	2 338	15 024
2021	Mar	1 301	703	4 626	2 429	1 248	1 133	933	313	2 309	14 995
	Jun	1 235	723	4 648	2 421	1 257	1 166	979	256	2 256	14 942
	Sep	1 216	720	4 448	2 297	1 145	1 104	851	275	2 225	14 282
	Dec	1 247	727	4 524	2 424	1 184	1 052	858	264	2 263	14 544
2022	Mar	1 293	781	4 586	2 371	1 265	1 082	917	321	2 298	14 914
	Jun	1 343	807	4 787	2 481	1 391	1 167	924	318	2 344	15 562

6.5 Number of employees and gross earnings by industry, 2021

As from December 2004, Stats SA introduced a new employment statistics survey that covers employing enterprises in the formal non-agricultural business sector of the South African economy that are registered for Income Tax (IT), resulting in the extensive coverage of all small businesses. Previously the coverage was restricted to both employing and non-employing VAT registered enterprises with an annual turnover of R300 000 or more. By restricting the coverage to employing businesses, the new survey is able to provide estimates for employment and earnings as well as estimates for average monthly earnings and it is in accordance with the International Labour Organisation (ILO) definitions and concepts.

Introduction of the new sample from the June quarter 2006 enables Stats SA to provide users with survey results for the June and September 2006 quarters from the new sample.

Stats SA has been working for some years to improve the quality of its economic statistics. The latest series to benefit from these improvements are those for employment and average monthly earnings derived from the Quarterly Employment Statistics (QES) survey, a survey of formal non-agricultural businesses and other entities which are employers.

Considerable work has been undertaken over the last two years to improve the completeness of the list of employers in the economy, held on Stats SA's Business Register, from which the samples for the survey are drawn. Greater use has been made of additional administrative sources of employer entities, particularly the lists maintained by the South African Revenue Service (SARS) of employers making contributions on behalf of their employees for Pay As You Earn (PAYE), and the Department of Labour's Unemployment Insurance Fund (UIF).

It is important to distinguish between the lift in the level of the series from improvements in the coverage of employers and the growth in employment shown by the series due to new employer entities entering the economy and continuing employers taking on additional staff. This break in series relates mainly to the level of employment, rather than the growth rate of employment. However, an outcome of not publishing data from a sample revised in 2005 has been that any new employer entity commencing operations from early 2004 onwards would not have had a chance of being selected until the reselection of the sample in March 2006. The effect is that the published series based on the 2004 sample show somewhat smaller growth than would have been shown from a sample revised in 2005.

Further factors affecting the growth of the series between 2004 and 2006 were the expansion of the formal sector as a result of legislative changes, growth resulting from small businesses moving from the informal to the formal sector and greater overall compliance by businesses leading to their registration for PAYE and/or UIF.

Employment and gross earnings - Unless otherwise indicated in a subscription, the following is applicable: Employment refers to the number of people employed by the business, who received payment (in salaries; wages; commission, in addition to a retainer, salary or wage; piece rates; or payments in kind) for any part of the reference period. This excludes independent contractors and consultants; working proprietors; sole and joint owners; employees paid on a commission basis where a retainer, salary or wage was not paid; and employees based in South Africa but paid from abroad, e.g. embassy employees

Annual employment data are shown as at 30 June of the relevant year, whereas quarterly data are shown as at the last pay-day of the relevant quarter.

Gross earnings are payments for ordinary, standard or agreed hours during the reference period for all permanent, temporary, casual, executive and managerial employees, before taxation and other deductions. Gross earnings include salaries and/or fees paid to all directors, executives and managers; employers' contributions to holiday, pension, provident and medical funds and contributions to the Unemployment Insurance and Compensation Funds; payments paid from South Africa to employees based abroad, e.g. embassy employees; payments for all types of leave, except those paid on termination; fringe benefits paid in cash such as housing, mortgage and rent subsidies, transport allowances, and cell phone allowances; allowances and penalty payments relating to ordinary-time hours. Annual gross earnings data reflect the total for the relevant year, whereas quarterly data are the sum of the gross earnings for the three months of the relevant quarter.

6.5.1 Number of employees and gross earnings by industry, 2021

Industry	Number of employees (thousands)				Gross earnings (R millions)			
	Mar	Jun	Sep	Dec	Mar	Jun	Sep	Dec
Mining and quarrying ¹	459	457	465	458	39 646	40 076	43 583	41 659
Manufacturing	1 107	1 160	1 162	1 177	68 908	74 478	75 232	84 498
Electricity, gas and water supply	58	59	59	59	8 417	8 648	8 241	9 631
Construction	483	554	563	545	27 291	32 154	34 209	35 395
Wholesale and retail trade; repair of motor vehicles, motor cycles and personal and household goods; hotels and restaurants	2 119	2 105	2 085	2 142	100 051	105 506	105 117	116 686
Transport, storage and communication	453	425	421	419	36 479	38 229	35 490	39 727
Financial intermediation, insurance, real estate and business services	2 166	2 325	2 345	2 351	190 247	198 817	210 708	218 283
Community, social and personal services	2 808	2 790	2 852	2 910	244 164	255 757	270 449	281 456
Total (all industries)	9 652	9 876	9 952	10 061	715 204	753 665	783 029	827 334

Source: Stats SA, *Quarterly employment statistics* (Statistical release P0277)

Due to rounding, industrial numbers do not necessarily add up to the total.

¹ Data are obtained from the Minerals Bureau, Department of Mineral Resources.

6.6 Average monthly earnings, at current prices, by industry, 2021 (Rands)

	Including bonuses and overtime payments				Excluding bonuses and overtime payments			
	Feb	May	Aug	Nov	Feb	May	Aug	Nov
Mining and quarrying ¹	28 972	28 666	31 822	30 114
Manufacturing	19 572	20 842	21 130	20 969	18 386	19 534	19 832	19 516
Electricity, gas and water supply	47 140	48 067	45 660	47 786	44 431	44 370	44 215	46 757
Construction	18 339	18 484	19 068	18 973	17 672	17 737	18 354	18 122
Wholesale and retail trade; repair of motor vehicles, motor cycles and personal and household goods; hotels and restaurants	14 589	15 744	15 498	15 325	14 254	15 315	15 122	14 912
Transport, storage and communication	25 514	26 186	26 887	27 329	24 249	24 654	25 446	25 738
Financial intermediation, insurance, real estate and business services	25 450	25 179	25 297	25 677	25 033	24 621	24 788	25 115
Community, social and personal services	28 169	29 352	29 468	29 186	27 351	28 482	28 565	28 305
Total (all industries)	23 127	23 640	23 908	23 828

Source: Stats SA, *Quarterly employment statistics* (Statistical release P0277)

Average monthly earnings at current prices are calculated by dividing the total gross earnings, excluding severance, termination and redundancy payments, for the reference month by the number of employees as at the end of the reference month.

¹ Data are obtained from the Minerals Bureau, Department of Mineral Resources. At this stage the Department of Mineral Resources is unable to provide data items with regard to bonuses and overtime payments separately.

7

Prices

Prices

7.1	Production price indices (PPI) and consumer price indices (CPI), 2012-2021 (base year Dec 2016=100)	79
7.2	PPI and CPI percentage changes compared with the previous year, 2012-2021	80
7.3	PPI and CPI on a monthly basis, 2021	82
7.4	PPI and CPI annual inflation on a monthly basis, 2021	82
7.5	CPI (all items, all urban areas) by province, 2012-2021 (base year Dec 2021=100)	83
7.6	CPI (all items, all urban areas) percentage change compared with the previous year by province, 2012-2021	83

7.1 Production price indices (PPI) (base year Dec 2020=100) and Consumer price indices (CPI) (base year Dec 2021=100), 2012-2021

		2012	2013	2014	2015	2016	2017	2018	2019	2020	2021
PPI	Headline ¹	65,7	69,6	74,8	77,4	82,9	87,0	91,7	96,0	98,3	105,3
CPI	All items, all urban areas ²	63,1	66,8	70,8	74,1	78,8	82,9	86,8	90,3	93,3	97,5
	Food, all urban areas	57,9	61,3	66,1	69,5	77,0	82,4	85,1	87,7	91,9	97,8

Sources: Stats SA, *Producer price index (PPI)* (Statistical release P0142.1) and *Consumer price index (CPI)* (Statistical release P0141)

¹ This series has become the PPI headline since January 2012.

² This series has become the CPI headline since January 2008.

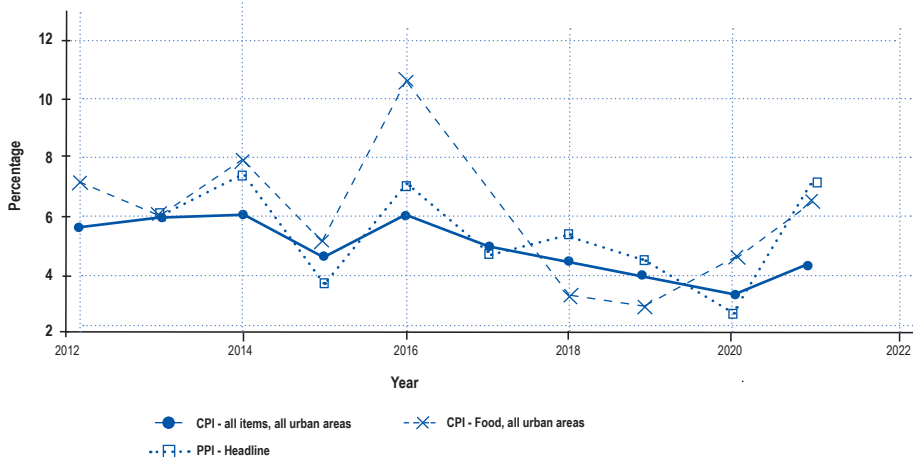
7.2 PPI and CPI percentage changes compared with the previous year, 2012-2021

		2012	2013	2014	2015	2016	2017	2018	2019	2020	2021
PPI	Domestic output	..	6,0	7,5	3,6	7,0	4,8	5,5	4,6	2,6	7,1
CPI	All items, metropolitan areas	5,5	5,9	6,0	4,7	6,3	5,2	4,7	4,0	3,3	4,5
	All items, all urban areas	7,2	5,9	7,8	5,1	10,8	7,0	3,3	3,1	4,8	6,4

Sources: Stats SA, *Producer price index (PPI)* (Statistical release P0142.1) and *Consumer price index (CPI)* (Statistical release P0141)

Based on average annual indices.

7.2 PPI and CPI percentage changes compared with the previous year, 2012-2022 (concl.)



Sources: Stats SA, *Producer price index (PPI)* (Statistical release P0142.1) and *Consumer price index (CPI)* (Statistical release P0141)

Based on average annual indices.

7.3 PPI (base year Dec 2020=100) and CPI (base year Dec 2021=100) on a monthly basis, 2021

	Jan	Feb	Mar	Apr	May	Jun	Jul	Aug	Sep	Oct	Nov	Dec
PPI - Headline	100,8	101,5	102,8	103,5	103,9	104,7	105,4	106,2	107,2	107,9	109,4	110,8
CPI - All items, all urban areas	94,8	95,4	96,1	96,7	96,8	97,0	98,1	98,5	98,7	99,0	99,4	100,0

7.4 PPI and CPI annual inflation on a monthly basis, 2021

	Jan	Feb	Mar	Apr	May	Jun	Jul	Aug	Sep	Oct	Nov	Dec
PPI - Headline	3,5	4,0	5,2	6,7	7,4	7,7	7,1	7,2	7,8	8,1	9,6	10,8
CPI - All items, all urban areas	3,2	2,8	3,2	4,4	5,2	4,9	4,7	4,9	5,0	5,0	5,4	5,9

7.5 CPI (all items, all urban areas) by province, 2012-2021 (base year Dec 2021=100)

	Eastern Cape	Free State	Gauteng	KwaZulu- Natal	Limpopo	Mpuma- langa	North west	Northern Cape	Western Cape	South Africa
2012	63,2	63,2	63,3	63,8	62,6	64,9	64,5	64,8	61,2	63,1
2013	66,5	66,9	67,1	67,4	66,3	68,5	68,1	68,5	64,6	66,8
2014	70,7	70,9	71,1	71,7	70,9	72,5	72,2	72,6	68,5	70,8
2015	73,9	74,4	74,4	74,6	73,7	75,6	75,4	75,8	71,9	74,1
2016	79,3	79,6	79,1	79,8	79,4	80,4	80,1	79,8	76,4	78,8
2017	83,5	83,6	83,2	83,8	83,3	83,9	83,7	83,1	81,2	82,9
2018	87,1	87,2	87,1	87,1	86,4	87,2	86,8	86,4	85,6	86,8
2019	90,4	90,7	90,6	90,5	90,3	90,7	89,9	89,9	89,7	90,3
2020	93,2	93,5	93,3	93,3	93,1	93,4	92,6	93,0	93,1	93,3
2021	97,7	97,7	97,5	97,6	97,6	97,5	97,5	97,4	97,6	97,5

7.6 CPI (all items, all urban areas) percentage changes compared with the previous year by province, 2012-2021

	Eastern Cape	Free State	Gauteng	KwaZulu- Natal	Limpopo	Mpuma- langa	North west	Northern Cape	Western Cape	South Africa
2012	6,0	5,9	5,5	6,0	6,1	6,2	6,1	6,6	5,3	5,5
2013	5,2	5,9	6,0	5,6	5,9	5,5	5,6	5,7	5,6	5,9
2014	6,3	6,0	6,0	6,4	6,9	5,8	6,0	6,0	6,0	6,0
2015	4,5	4,9	4,6	4,0	3,9	4,3	4,4	4,4	5,0	4,7
2016	7,3	7,0	6,3	7,0	7,7	6,3	6,2	5,3	6,3	6,3
2017	5,3	5,0	5,2	5,0	4,9	4,4	4,5	4,1	6,3	5,2
2018	4,3	4,3	4,7	3,9	3,7	3,9	3,7	4,0	5,4	4,7
2019	3,8	4,0	4,0	3,9	4,5	4,0	3,6	4,1	4,8	4,0
2020	3,1	3,1	3,0	3,1	3,1	3,0	3,0	3,4	3,8	3,3
2021	4,8	4,5	4,5	4,6	4,8	4,4	5,3	4,7	4,8	4,5

Source: Consumer price index (CPI) (Statistical release P0141)

Percentage change compared with the previous year (inflation rate) is based on the annual average weighted index.

8

Mining

Mining

- | | | |
|-----|--|----|
| 8.1 | Indices of the physical volume of mining production, 2012-2021
(base year 2019=100) | 87 |
| 8.2 | Total value of mineral sales, 2012-2021 (R millions) | 88 |

8.1 Indices of the physical volume of mining production, 2012-2021 (base year 2019=100)

	2012	2013	2014	2015	2016	2017	2018	2019	2020	2021
Including gold Actual indices	97,7	101,1	99,0	102,2	98,9	102,5	100,9	100,0	89,0	99,8
Excluding gold Actual indices	91,1	94,3	91,9	96,5	93,0	98,1	99,2	100,0	88,6	99,8

8.2 Total value of mineral sales, 2012-2021 (R millions)

	2012	2013	2014	2015	2016	2017	2018	2019	2020	2021
Including gold Actual values	364 117,3	397 677,9	396 277,6	387 646,7	437 589,5	473 885,2	498 500,8	552 880,9	608 985,6	854 298,4
Excluding gold Actual values	287 292,7	327 691,0	332 928,8	324 946,7	349 164,8	391 697,8	428 817,3	476 248,5	522 549,6	752 089,0

9

Manufacturing

Manufacturing

9.1	Indices of the physical volumes of manufacturing production by manufacturing division (actual indices), 2012-2021 (base year 2019=100)	91
9.2	Value of sales of manufactured products by manufacturing division (actual values), 2012-2021 (R millions)	92
9.3	Utilisation of production capacity by manufacturing division, 2012-2021 (percentages)	93

9.1 Indices of the physical volumes of manufacturing production by manufacturing division (actual indices), 2012-2021 (base year 2019=100)

	2012	2013	2014	2015	2016	2017	2018	2019	2020	2021
Food and beverages	82,4	85,5	87,4	89,9	89,5	91,8	96,1	100,0	94,4	100,3
Textiles, clothing, leather and footwear	113	115,7	116,7	115,8	114,6	109,8	106,4	100,0	82,6	93,4
Wood, paper, publishing and printing	108,3	108,5	109,5	108,9	111,3	106,9	105,2	100,0	86,7	95,1
Petroleum, chemical products, rubber and plastic products	101,4	102	102	101,8	106,2	102	101,2	100,0	89,2	79,6
Glass and non-metallic mineral products	117,1	119,1	112,3	110,7	108,5	106,4	108,2	100,0	85,5	102,4
Basic iron and steel, non-ferrous metal products, metal products and machinery	104,6	106,4	103,1	99,7	97,6	101,4	101,6	100,0	87,6	96,2
Electrical machinery	109,6	113,7	111,4	118,3	117,5	111,7	104,4	100,0	84,1	96,4
Radio, television, communication apparatus and professional equipment	111,6	114,6	125,5	119,3	125,9	120,4	107,5	100,0	93,3	93,8
Motor vehicles, parts and accessories and other transport equipment	96,5	93,5	92,8	96,3	96,9	96,6	101,6	100,0	75,3	100,3
Other manufacturing not elsewhere classified	111	104,7	107,5	99,8	97,9	97,1	101,6	100,0	78,8	88,4
Total manufacturing	98,7	100	100,1	100,1	100,8	100,1	101,1	100,0	87,5	92,9

Source: Stats SA, *Manufacturing: Production and sales* (Statistical release P3041.2)

The sample of manufacturing production and sales is based on an updated version of Stats SA's business register, based on the database of units registered for value-added tax (VAT) and income tax (IT), obtained from the South African Revenue Service (SARS).

9.2 Value of sales of manufactured products by manufacturing division (actual values), 2012-2021 (R millions)

	2012	2013	2014	2015	2016	2017	2018	2019	2020	2021
Food and beverages	342 017	367 303	401 164	435 728	482 361	497 668	524 941	563 863	565 605	637 898
Textiles, clothing, leather and footwear	50 991	54 453	58 662	60 376	63 290	63 630	63 633	61 385	50 681	58 756
Wood, paper, publishing and printing	120 423	126 356	133 602	139 927	149 785	152 354	159 338	161 319	145 892	166 794
Petroleum, chemical products, rubber and plastic products	377 469	420 674	449 701	424 975	430 838	450 533	481 012	481 171	426 408	458 064
Glass and non-metallic mineral products	54 655	59 727	61 743	63 301	65 313	67 334	69 798	68 624	60 439	74 259
Basic iron and steel, non-ferrous metal products, metal products and machinery	347 947	374 832	407 301	408 042	431 123	470 228	511 270	539 311	477 041	617 785
Electrical machinery	50 419	55 883	58 840	64 222	66 723	60 287	59 443	58 553	53 290	61 708
Radio, television, communication apparatus and professional equipment	19 907	21 438	23 903	23 497	26 431	26 510	25 511	24 955	22 858	24 961
Motor vehicles, parts and accessories and other transport equipment	207 644	223 859	257 869	271 241	300 948	316 463	348 550	379 904	306 023	339 556
Other manufacturing not elsewhere classified	61 387	62 684	68 411	67 536	70 393	76 768	84 885	86 217	72 374	98 177
Total manufacturing	1 632 859	1 767 210	1 921 195	1 958 843	2 087 205	2 181 774	2 328 380	2 425 302	2 180 611	2 537 960

Source: Stats SA, *Manufacturing: Production and sales* (Statistical release P3041.2)

9.3 Utilisation of production capacity by manufacturing division, 2012-2021 (percentages)

	2012	2013	2014	2015	2016	2017	2018	2019	2020	2021
Food and beverages	82,9	82,5	82,5	83,5	84,1	83,5	82,7	83,1	73,9	79,7
Textiles, clothing, leather and footwear	77,0	76,7	75,0	75,8	74,1	71,9	72,1	71,6	60,6	69,7
Wood, paper, publishing and printing	83,7	83,4	82,4	80,7	82,6	82,6	82,3	81,8	72,4	82,2
Petroleum, chemical products, rubber and plastic products	83,7	82,1	81,7	81,1	84,0	83,2	83,6	83,7	77,5	77,3
Glass and non-metallic mineral products	78,6	80,4	80,6	80,0	81,9	80,8	81,1	77,2	66,3	76,2
Basic iron and steel, non-ferrous metal products, metal products and machinery	79,1	79,5	79,0	77,4	77,8	78,2	77,3	76,4	67,7	74,6
Electrical machinery	80,5	81,5	80,1	80,4	79,5	79,6	78,5	79,1	68,0	80,5
Radio, television, communication apparatus and professional equipment	84,0	84,0	86,1	83,6	85,4	85,3	82,6	80,7	73,0	81,1
Motor vehicles, parts and accessories and other transport equipment	83,4	81,3	80,4	80,6	81,1	81,1	82,1	80,5	67,3	77,3
Other manufacturing not elsewhere classified	81,7	81,4	80,2	78,9	80,7	81,6	80,8	79,6	62,9	78,6
Total manufacturing	81,9	81,6	81,1	80,3	81,7	81,3	81,1	80,6	71,4	77,6

Source: Stats SA, *Manufacturing: Utilisation of production capacity by large enterprises* (Statistical release P3043)

10

Construction

Construction

- | | | |
|------|---|----|
| 10.1 | Actual capital expenditure on new construction works by the public sector, by type of construction work, 2012-2021 (R thousands) | 97 |
| 10.2 | Actual capital expenditure on reconstruction and development programmes (RDP) by the national and provincial governments, by type of construction work, 2001-2006 (R thousands) | 98 |

10.1 Actual capital expenditure on new construction works by the public sector, by type of construction work, 2012-2021 (R thousands)

	2012	2013	2014	2015	2016	2017	2018	2019	2020	2021
Residential buildings	477 709	655 775	1 031 312	2 165 885	1 050 352	1 325 873	1 909 510	1 909 510	993 158	711 877
Non-residential buildings	8 732 573	9 793 792	11 183 656	15 530 112	21 265 956	18 133 286	16 812 354	16 812 354	11 545 763	8 405 847
Roads, streets and bridges	11 916 447	13 960 085	7 915 321	17 325 224	17 789 585	22 973 317	23 696 690	23 696 690	20 823 429	20 204 355
Sewerage and sanitation	1 510 292	1 534 274	1 585 500	1 586 710	1 899 325	2 121 637	2 197 643	2 197 643	1 776 870	2 401 661
Electricity	1 559 198	1 997 532	2 492 698	67 053 967	71 826 492	74 529 931	63 168 818	63 168 818	49 364 819	38 648 526
Community and social works	1 925 423	2 074 133	1 998 719	1 933 618	1 886 360	2 246 966	4 341 346	4 341 346	4 982 701	3 669 911
Sport facilities	0	13 395	2 498	51 711	543	0	0	0	0	0
Refuse sites	177 089	230 615	364 589	297 838	456 851	236 917	147 111	147 111	284 075	257 361
Water	3 776 984	3 822 087	5 201 793	9 952 212	14 433 909	12 515 402	8 424 231	8 424 231	9 731 898	11 243 238
Port facilities	32 000	32 000	211 000	122 000	122 000	624	24 048
Airports	0	961 109	3 489	9 241	9 241	906 310	1 200 275
Pipeline networks	489 421	1 121 221	97 080	120 813	120 813	230 333	736 389
Other	106 759 869	87 913 215	93 591 392	58 026 407	60 978 222	47 609 431	39 757 982	39 757 982	41 070 749	28 929 254
Total	136 835 584	121 994 903	125 367 478	174 445 105	193 701 925	182 004 329	160 707 739	160 707 739	141 710 729	116 432 742

Source: Stats SA, *Capital expenditure by the public sector* (Statistical release P9101)

10.2 Actual capital expenditure on reconstruction and development programmes (RDP) by the national and provincial governments, by type of construction work, 2001-2006 (R thousands)

	2001	2002	2003	2004	2005	2006
Residential buildings	446 714	824 306	1 160 983	970 370	1 025 327	0
Non-residential buildings	62 455	4 399	8 172	2 881	4 500	0
Roads, streets and bridges	9 561	75 324	13 707	1 000	0	0
Sewerage and sanitation	19 107	22 701	22 904	126 114	143 947	96 471
Electricity	43	3 597	0	0	0	160
Water	107 174	94 115	109 215	584 205	242 743	100 015
Other	195 541	97 650	93 121	16 515	0	0
Total	840 595	1 122 092	1 408 102	1 701 085	1 416 517	196 646

Source: Stats SA, *Capital expenditure by the public sector* (Statistical release P9101)

For the financial year ended 31 March.

RDP figures are included in Table 10.1 - Actual capital expenditure on new construction works by the public sector. As from 2007, RDP figures are not collected separately anymore.

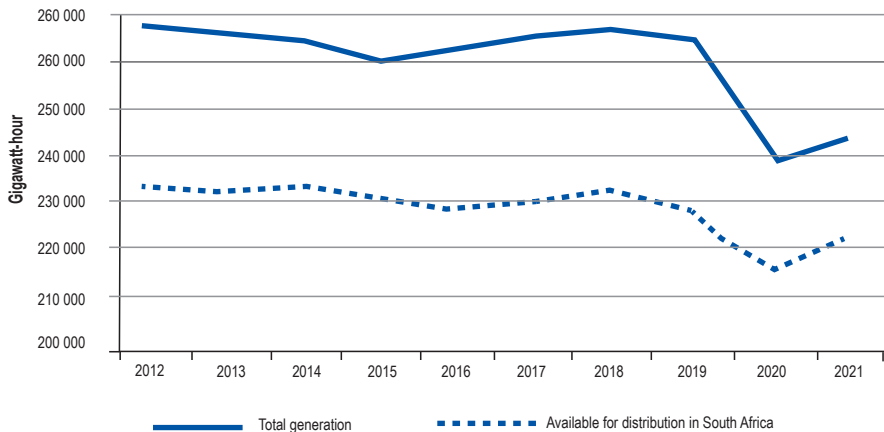
11

Energy

Energy

11.1	Electricity generated and available for distribution, 2012-2021	101
11.2	Electricity consumption by province, 2012-2021 (gigawatt-hours)	102

11.1 Electricity generated and available for distribution, 2012-2021



Source: Stats SA, *Electricity generated and available for distribution* (Statistical release P4141)

11.2 Electricity consumption by province, 2012-2021 (gigawatt-hours)

	Eastern Cape	Free State	Gauteng	KwaZulu- Natal	Limpopo	Mpuma- langa	North West	Northern Cape	Western Cape	South Africa
2012	23 681	7 883	5 639	11 788	42 695	20 423	62 818	33 260	18 352	226 539
2013	23 209	7 858	5 987	11 999	43 531	21 297	61 698	32 562	18 693	226 834
2014	23 267	8 208	5 975	11 873	42 321	20 098	62 017	34 431	19 755	227 945
2015	22 779	8 678	6 027	11 663	40 430	21 715	59 969	33 211	19 864	224 336
2016	22 581	9 191	5 589	11 751	39 952	21 053	60 778	32 506	19 650	223 051
2017	22 770	9 237	5 897	11 749	41 303	21 509	60 988	32 706	19 353	225 512
2018	22 304	8 930	6 257	11 674	41 307	22 119	60 839	32 849	20 617	226 896
2019	22 373	8 911	6 416	11 547	40 713	20 658	59 265	32 480	20 654	223 017
2020	20 331	8 555	5 903	11 159	39 537	18 132	57 203	31 314	19 673	211 806
2021	19 918	8 795	5 964	10 792	39 573	22 053	57 913	31 150	20 725	216 884

Source: Stats SA, *Electricity generated and available for distribution* (Statistical release P4141)

Wholesale energy as delivered by Eskom to the various provinces.

12

Transport

Transport

- 12.1 Freight transportation, 2012-2021
- 12.2 Passenger transport, 2012-2021

105
105

12.1 Freight transport, 2012-2021

		2012	2013	2014	2015	2016	2017	2018	2019	2020	2021
Payload (1 000 tons)	Rail	207 264	213 290	221 944	220 982	216 935	227 242	218 475	215 944	191 968	178 795
	Road	559 027	568 128	608 701	584 740	606 365	667 908	727 979	707 740	623 654	688 846
	Total	766 291	781 418	830 645	805 722	823 300	895 150	946 454	923 684	815 622	867 642
Income (R millions)	Rail	29 912	33 290	36 490	37 293	37 894	42 331	42 856	44 222	40 025	37 959
	Road	82 967	89 870	100 060	97 107	102 732	115 009	126 241	125 314	113 138	127 802
	Total	112 879	123 160	136 550	134 400	140 626	157 340	169 097	169 536	153 163	165 762

12.2 Passenger transport, 2012-2021

		2012	2013	2014	2015	2016	2017	2018	2019	2020	2021
Number of passengers (thousands)	Rail	534 362	544 895	529 949	477 550	398 743	316 892	254 643	175 447	29 750	21 762
	Road	312 657	301 596	323 584	320 323	296 160	313 809	308 619	298 155	204 602	208 288
	Total	847 019	846 491	853 533	797 873	694 903	630 701	563 262	473 602	234 352	230 050
Income (R millions)	Rail	2 474	2 839	3 085	3 040	2 939	2 641	2 434	2 164	605	444
	Road	7 657	7 943	9 037	9 277	9 462	9 745	9 660	10 195	6 760	7 731
	Total	10 131	10 782	12 122	12 317	12 401	12 386	12 094	12 359	7 365	8 175

Source: Stats SA, *Land transport survey* (Statistical release P7162)

This survey has been re-engineered and covers freight and passenger transport as from 2008.

13

Financial statistics:

Private enterprises operating
in the formal non-agricultural
business sector

Financial statistics

Private enterprises operating in the formal non-agricultural business sector

13.1	Selected income and expenditure items: Forestry and fishing industry, 2014-2021 (R millions)	110
13.2	Selected income and expenditure items: Mining and quarrying industry, 2014-2021 (R millions)	111
13.3	Selected income and expenditure items: Manufacturing industry, 2014-2021 (R millions)	112
13.4	Selected income and expenditure items: Electricity, gas and water supply industry, 2014-2021 (R millions)	113
13.5	Selected income and expenditure items: Construction industry, 2014-2021 (R millions)	114
13.6	Selected income and expenditure items: Trade industry, 2014-2021 (R millions)	115
13.7	Selected income and expenditure items: Transport, storage and communication industry, 2014-2021 (R millions)	116
13.8	Selected income and expenditure items: Real estate and other business services industry (excluding financial intermediation and insurance), 2014-2021 (R millions)	117
13.9	Selected income and expenditure items: Community, social and personal services industry (excluding government institutions), 2014-2021 (R millions)	118
13.10	Comparison of operating ratios between 2014 and 2021 – Turnover/Carrying value of assets	119
13.11	Comparison of operating ratios between 2014 and 2021 – Profit/Turnover	120
13.12	Comparison of operating ratios between 2014 and 2021 – Profitability ratios	121

Notes for tables 13.1 to 13.12

Source: Stats SA, *Annual financial statistics survey* (Statistical release P0021)

- ¹ Includes the value of sales of goods; services rendered; leasing and hiring of motor vehicles and other transport equipment under operating leases; leasing and hiring of plant, machinery and equipment, mineral rights leased; and rental and leasing of land, buildings and other structures under operating leases for only South African-based activities of the enterprise is reflected in this publication.
- ² Includes raw materials or materials for processing, packaging materials, fuel and consumable and maintenance stores; work in progress (partially completed); finished goods (own manufactures) and finished goods not produced by the enterprise but purchased for resale.
- ³ Is calculated as total income less total expenditure less opening stock plus closing inventory.
- ⁴ Includes the acquisition of land, property, plant and equipment and intangible assets on new and existing assets.
- ⁵ Turnover divided by total assets.
- ⁶ Net profit after providing for company tax divided by turnover.
- ⁷ Net profit after providing for company tax divided by total equity.

Due to differences in sampling methods, sampling frames and coverage of industries, statistics of the Economic Activity surveys prior to 2003 are not comparable to surveys as from 2003, onwards.

13.1 Selected income and expenditure items: Forestry and fishing industry, 2014-2021 (R millions)

		2014	2015	2016	2017	2018	2019	2020	2021
Income	Turnover ¹	24 638	27 968	31 370	35 449	33 909	36 295	34 712	37 019
	Interest received	120	107	191	200	206	334	288	200
	Other income	376	236	497	1 169	707	618	903	1 167
Inventories ²	Opening value	2 212	2 816	2 687	2 818	3 025	3 557	4 128	4 964
	Closing value	2 768	2 651	2 788	3 293	3 113	4 144	4 903	4 820
Expenditure	Purchases	10 808	11 477	12 659	16 490	16 581	17 733	17 860	18 699
	Employment cost	4 954	5 269	5 740	6 378	6 615	6 655	6 831	7 161
	Interest paid	476	474	634	968	1 071	1 121	1 363	1 090
	<i>Interest paid on lease liabilities</i>	335	298
	<i>Other interest paid</i>	1 028	792
	Other expenditure	2 622	3 020	2 992	3 628	3 133	3 715	3 800	4 002
	Total expenditure	24 369	25 613	28 459	34 372	34 602	36 925	37 679	39 171
	Net profit or loss before providing for company tax and dividends ³	3 193	4 016	5 333	5 983	3 126	4 864	3 215	3 075
Company tax paid or provided for during the financial year	855	958	1 329	1 563	720	1 159	868	837	
Net profit after providing for company tax and dividends	1 637	1 898	2 714	2 743	1 002	-1 080	857	1 587	
Additions (capital expenditure) ⁴	1 714	1 816	2 544	2 736	2 454	2 191	2 556	2 729	
Carrying value of property, plant and intangible assets at the end of the financial year	10 577	10 958	12 501	13 382	14 276	15 657	16 484	17 593	

Information on interest paid on lease liabilities and other interest paid was not collected in periods prior to 2020.

13.2 Selected income and expenditure items: Mining and quarrying industry, 2014-2021 (R millions)

		2014	2015	2016	2017	2018	2019	2020	2021
Income	Turnover ¹	523 234	538 596	547 305	606 712	667 413	751 319	834 149	956 765
	Interest received	7 648	9 563	10 107	7 972	9 699	10 445	12 074	11 092
	Other income	9 038	8 272	8 564	9 909	12 277	13 276	18 984	19 490
Inventories ²	Opening value	61 951	70 825	70 718	68 588	68 908	78 010	98 494	117 556
	Closing value	70 415	71 699	69 116	69 302	77 881	98 630	116 899	152 357
Expenditure	Purchases	184 434	191 020	213 976	220 527	258 893	293 673	350 998	368 046
	Employment cost	105 031	108 623	115 032	122 004	131 363	139 735	147 644	156 719
	Interest paid	16 643	19 439	23 857	20 845	23 513	23 220	23 911	22 617
	<i>Interest paid on lease liabilities</i>	1 239	958
	<i>Other interest paid</i>	22 672	21 659
	Other expenditure	48 356	54 802	57 266	47 040	60 184	69 866	75 556	68 023
	Total expenditure	557 713	586 953	625 463	612 321	713 732	752 510	841 201	860 917
Net profit or loss before providing for company tax and dividends ³		18 694	-7 871	-35 651	42 665	25 244	85 560	75 120	226 840
Company tax paid or provided for during the financial year		15 048	9 392	8 159	15 783	15 937	25 685	29 654	56 261
Net profit after providing for company tax and dividends		-9 277	-29 257	-53 555	1 799	-7 579	26 171	3 363	138 929
Additions (capital expenditure) ⁴		89 005	88 681	80 173	58 784	74 208	82 581	86 948	73 693
Carrying value of property, plant and intangible assets at the end of the financial year		540 516	561 167	538 587	540 731	513 398	547 878	573 129	602 148

Information on interest paid on lease liabilities and other interest paid was not collected in periods prior to 2020.

13.3 Selected income and expenditure items: Manufacturing industry, 2014-2021 (R millions)

		2014	2015	2016	2017	2018	2019	2020	2021
Income	Turnover ¹	2 210 095	2 344 892	2 452 044	2 611 338	2 676 526	2 772 340	2 819 411	2 655 204
	Interest received	10 306	12 248	14 911	16 860	17 378	18 994	23 118	24 810
	Other income	18 343	21 397	20 571	21 712	23 029	22 822	25 850	30 111
Inventories ²	Opening value	261 903	287 959	297 860	321 627	327 110	358 381	390 390	397 641
	Closing value	290 248	295 927	321 771	333 861	362 697	380 942	401 790	402 864
Expenditure	Purchases	1 490 807	1 552 688	1 610 014	1 725 785	1 787 671	1 841 484	1 875 736	1 741 876
	Employment cost	226 323	247 068	267 073	282 344	300 264	315 406	326 361	311 943
	Interest paid	28 135	31 568	35 028	40 121	42 438	40 283	53 082	51 113
	<i>Interest paid on lease liabilities</i>	5 137	4 999
	<i>Other interest paid</i>	47 945	46 114
	Other expenditure	112 248	116 776	118 176	117 219	122 530	127 788	132 905	131 078
	Total expenditure	2 163 614	2 291 302	2 459 257	2 582 013	2 673 888	2 760 044	2 889 031	2 695 612
	Net profit or loss before providing for company tax and dividends ³	131 832	132 713	103 457	169 138	135 649	125 443	46 403	84 501
Company tax paid or provided for during the financial year	40 182	35 977	34 456	39 082	39 061	34 548	21 230	25 551	
Net profit after providing for company tax and dividends	42 053	34 877	14 769	73 607	31 405	19 164	-36 281	10 009	
Additions (capital expenditure) ⁴	87 651	91 684	91 288	100 016	106 285	112 067	110 048	95 359	
Carrying value of property, plant and intangible assets at the end of the financial year	509 799	549 620	555 800	584 715	593 187	625 334	634 569	630 032	

Information on interest paid on lease liabilities and other interest paid was not collected in periods prior to 2020.

13.4 Selected income and expenditure items: Electricity, gas and water supply industry, 2014-2021 (R millions)

		2014	2015	2016	2017	2018	2019	2020	2021
Income	Turnover ¹	175 144	189 566	211 961	233 416	244 658	258 083	289 274	293 575
	Interest received	3 335	3 186	4 018	5 811	3 811	3 887	4 119	3 452
	Other income	1 715	6 213	1 275	2 456	2 259	3 550	3 355	4 979
Inventories ²	Opening value	12 660	12 823	16 465	18 394	23 477	25 659	27 811	34 800
	Closing value	12 883	16 553	18 430	23 284	25 491	28 005	34 844	38 375
Expenditure	Purchases	72 325	94 541	102 140	100 332	104 681	127 339	150 840	149 793
	Employment cost	26 436	26 417	29 356	33 059	30 648	34 446	35 669	34 777
	Interest paid	8 005	11 649	16 830	24 433	32 482	37 900	42 488	45 957
	<i>Interest paid on lease liabilities</i>	1 935	2 599
	<i>Other interest paid</i>	40 553	43 358
	Other expenditure	8 995	5 417	4 185	18 380	9 538	14 172	13 641	10 864
	Total expenditure	179 346	197 373	228 600	255 832	255 487	310 208	355 132	352 673
Net profit or loss before providing for company tax and dividends ³		13 459	11 598	14 882	10 183	9 836	-17 176	-12 138	-7 385
Company tax paid or provided for during the financial year		2 797	2 679	3 739	2 188	2 000	-6 198	-2 768	-2 697
Net profit after providing for company tax and dividends		8 019	7 264	9 958	6 367	3 415	-18 507	-19 286	-13 611
Additions (capital expenditure) ⁴		84 255	77 335	88 580	95 461	79 859	56 617	49 532	44 292
Carrying value of property, plant and intangible assets at the end of the financial year		443 816	516 018	607 720	721 244	911 767	791 736	801 546	818 602

Information on interest paid on lease liabilities and other interest paid was not collected in periods prior to 2020.

13.5 Selected income and expenditure items: Construction industry, 2014-2021 (R millions)

		2014	2015	2016	2017	2018	2019	2020	2021
Income	Turnover ¹	399 380	421 946	469 544	504 554	475 336	484 556	466 462	426 706
	Interest received	3 354	5 856	6 272	10 047	7 611	7 973	8 794	7 343
	Other income	6 080	4 937	5 583	5 795	5 402	6 881	8 823	8 629
Inventories ²	Opening value	24 138	24 218	40 780	26 713	55 111	27 487	25 508	31 066
	Closing value	23 545	25 465	38 344	28 452	57 480	26 088	25 106	36 193
Expenditure	Purchases	216 979	230 755	241 778	259 754	248 363	255 577	260 574	251 024
	Employment cost	69 827	72 297	84 708	96 030	93 035	91 887	83 959	75 766
	Interest paid	3 974	7 626	10 838	9 428	10 773	10 925	10 459	11 841
	<i>Interest paid on lease liabilities</i>	690	696
	<i>Other interest paid</i>	9 769	11 145
	Other expenditure	18 207	22 595	24 396	25 331	21 952	25 169	27 093	23 193
	Total expenditure	398 881	427 547	472 452	511 652	490 274	486 490	472 290	441 578
Net profit or loss before providing for company tax and dividends ³		21 224	18 573	20 809	22 437	14 030	20 583	20 027	11 790
Company tax paid or provided for during the financial year		4 424	6 097	5 209	7 018	6 495	6 034	6 366	6 265
Net profit after providing for company tax and dividends		3 783	8 421	10 815	11 865	4 810	11 655	10 883	3 307
Additions (capital expenditure) ¹		17 038	15 011	13 931	16 740	17 819	13 431	13 355	13 785
Carrying value of property, plant and intangible assets at the end of the financial year		45 565	49 230	51 987	59 353	72 639	80 337	75 394	75 549

Information on interest paid on lease liabilities and other interest paid was not collected in periods prior to 2020.

13.6 Selected income and expenditure items: Trade industry, 2014-2021 (R millions)

		2014	2015	2016	2017	2018	2019	2020	2021
Income	Turnover ¹	2 843 407	3 034 283	3 297 026	3 494 745	3 694 520	3 979 693	4 242 116	4 064 349
	Interest received	15 396	16 747	20 469	22 920	26 033	29 065	32 815	28 441
	Other income	25 560	25 752	23 246	26 842	27 608	28 735	31 058	41 516
Inventories ²	Opening value	279 903	289 635	334 747	371 318	382 257	413 076	455 683	447 703
	Closing value	313 755	322 617	379 847	377 948	396 686	449 707	464 403	459 829
Expenditure	Purchases	2 250 666	2 388 418	2 623 579	2 739 573	2 834 776	3 096 936	3 309 688	3 188 286
	Employment cost	240 374	258 193	268 781	281 552	304 166	320 811	332 405	306 951
	Interest paid	28 060	29 771	34 592	45 647	47 447	40 173	51 449	42 535
	<i>Interest paid on lease liabilities</i>	10 667	13 514
	<i>Other interest paid</i>	40 782	29 021
	Other expenditure	91 705	96 753	106 869	117 837	137 365	148 820	158 649	151 303
	Total expenditure	2 852 077	3 029 601	3 322 775	3 477 566	3 659 053	3 973 203	4 223 220	4 041 978
Net profit or loss before providing for company tax and dividends ³		92 680	111 458	96 692	128 642	130 289	130 646	130 365	137 469
Company tax paid or provided for during the financial year		24 280	31 560	29 246	31 726	35 237	36 206	32 780	35 724
Net profit after providing for company tax and dividends		45 125	52 161	35 245	65 618	61 389	55 741	55 299	58 780
Additions (capital expenditure) ⁴		51 024	57 706	65 294	64 506	61 954	62 266	70 989	88 164
Carrying value of property, plant and intangible assets at the end of the financial year		237 043	259 960	277 041	308 136	329 660	335 858	409 340	419 623

Information on interest paid on lease liabilities and other interest paid was not collected in periods prior to 2020.

13.7 Selected income and expenditure items: Transport, storage and communication industry, 2014-2021 (R millions)

		2014	2015	2016	2017	2018	2019	2020	2021
Income	Turnover ¹	740 369	746 372	781 984	820 177	867 572	899 672	899 854	847 493
	Interest received	4 344	5 248	7 944	10 087	11 933	11 165	10 402	9 088
	Other income	9 288	7 757	8 940	12 497	12 421	11 359	13 780	23 183
Inventories ²	Opening value	14 479	14 807	17 165	20 117	18 206	17 539	20 536	17 514
	Closing value	13 776	16 412	19 964	19 786	17 623	18 698	18 262	18 212
Expenditure	Purchases	228 810	239 889	260 706	284 618	310 467	320 573	331 451	327 145
	Employment cost	103 029	113 433	121 637	124 218	134 625	142 330	148 533	147 995
	Interest paid	18 358	21 879	25 568	32 074	33 944	33 623	39 696	37 604
	<i>Interest paid on lease liabilities</i>	7 185	7 800
	<i>Other interest paid</i>	32 511	29 804
	Other expenditure	86 818	84 880	81 768	66 198	69 688	77 752	76 452	78 126
	Total expenditure	717 868	731 510	774 466	817 399	858 412	907 823	922 267	903 676
Net profit or loss before providing for company tax and dividends ³		53 136	46 045	50 454	52 803	60 948	44 814	38 447	5 153
Company tax paid or provided for during the financial year		14 157	14 890	16 237	15 440	15 857	21 348	15 196	9 365
Net profit after providing for company tax and dividends		14 372	10 656	-12 363	10 721	24 284	3 712	-4 688	-28 129
Additions (capital expenditure) ⁴		92 995	106 832	106 406	106 154	91 511	86 250	89 322	85 413
Carrying value of property, plant and intangible assets at the end of the financial year		441 658	546 738	586 658	619 194	654 987	649 902	685 647	686 741

Information on interest paid on lease liabilities and other interest paid was not collected in periods prior to 2020.

13.8 Selected income and expenditure items: Activities auxiliary to financial intermediation, real estate and other business services (excluding financial intermediation, insurance, pension funding and business services not elsewhere classified), 2014-2021 (R millions)

		2014	2015	2016	2017	2018	2019	2020	2021
Income	Turnover ¹	729 804	763 367	807 962	870 129	994 995	1 066 641	1 067 398	1 057 884
	Interest received	32 304	25 167	26 991	32 303	43 477	42 882	36 417	44 102
	Other income	20 852	18 163	19 585	22 480	25 388	24 972	28 281	38 030
Inventories ²	Opening value	21 431	27 292	24 123	25 060	29 063	32 994	35 081	36 567
	Closing value	17 899	26 101	22 576	27 022	32 700	35 384	33 823	33 222
Expenditure	Purchases	170 057	176 183	186 116	221 362	238 863	253 521	278 520	249 956
	Employment cost	207 388	225 867	250 335	269 669	300 172	311 187	319 851	341 732
	Interest paid	65 619	44 908	43 004	48 004	55 218	69 095	65 032	75 922
	<i>Interest paid on lease liabilities</i>	4 693	6 443
	<i>Other interest paid</i>	60 339	69 479
	Other expenditure	96 662	98 905	110 783	123 829	144 561	146 898	160 223	171 738
	Total expenditure	716 596	724 840	790 640	868 522	974 117	1 039 775	1 153 500	1 090 819
Net profit or loss before providing for company tax and dividends ³		198 667	181 408	174 720	215 449	205 134	201 278	58 884	158 188
Company tax paid or provided for during the financial year		32 907	32 409	30 299	29 145	34 433	33 260	31 140	36 903
Net profit after providing for company tax and dividends		136 197	105 998	66 993	121 761	106 398	94 092	-28 615	-11 875
Additions (capital expenditure) ⁴		33 706	35 191	37 501	40 316	42 172	40 511	46 464	47 941
Carrying value of property, plant and intangible assets at the end of the financial year		173 948	155 658	167 647	201 421	221 690	218 546	290 160	241 470

Information on interest paid on lease liabilities and other interest paid was not collected in periods prior to 2020.

13.9 Selected income and expenditure items: Community, social and personal services industry (excluding government and educational institutions), 2014-2021 (R millions)

		2014	2015	2016	2017	2018	2019	2020	2021
Income	Turnover ¹	185 728	203 757	237 297	258 919	287 532	298 738	315 574	298 396
	Interest received	1 977	1 974	2 534	3 670	4 534	3 839	4 433	3 450
	Other income	6 171	7 293	8 478	9 963	11 137	12 954	16 656	15 841
Inventories ²	Opening value	2 573	2 784	3 005	3 385	3 707	3 892	6 681	6 364
	Closing value	2 701	2 834	3 331	3 977	4 136	4 538	7 058	8 252
Expenditure	Purchases	42 282	47 567	53 808	62 609	67 804	70 318	90 265	88 311
	Employment cost	54 280	57 964	70 856	79 241	87 668	93 127	92 220	87 177
	Interest paid	3 482	3 261	4 559	4 852	6 097	6 882	11 057	10 040
	<i>Interest paid on lease liabilities</i>	2 760	3 467
	<i>Other interest paid</i>	8 297	6 573
	Other expenditure	34 955	37 777	43 654	41 014	50 015	55 706	56 980	61 266
	Total expenditure	177 282	191 008	226 850	249 585	283 473	301 253	325 512	311 101
	Net profit or loss before providing for company tax and dividends ³		23 671	31 842	31 342	33 190	32 495	27 832	30 055
Company tax paid or provided for during the financial year		4 886	5 939	5 854	6 717	6 288	5 219	5 916	6 632
Net profit after providing for company tax and dividends		14 300	17 383	18 260	18 772	21 085	15 947	16 885	16 676
Additions (capital expenditure) ⁴		10 160	10 728	12 010	14 774	15 486	14 412	13 915	15 059
Carrying value of property, plant and intangible assets at the end of the financial year		65 088	72 654	84 080	89 279	120 232	109 305	143 779	140 732

Information on interest paid on lease liabilities and other interest paid was not collected in periods prior to 2020.

13.10 Comparison of operating ratios between 2014 and 2021 - Assets turnover ratio⁶

	2014	2015	2016	2017	2018	2019	2020	2021
Forestry and fishing	0,73	0,77	0,73	0,72	0,68	0,67	0,62	0,63
Mining and quarrying	0,46	0,45	0,50	0,55	0,59	0,62	0,65	0,66
Manufacturing	1,52	1,50	1,47	1,42	1,44	1,42	1,40	1,22
Electricity, gas and water supply	0,31	0,30	0,27	0,27	0,23	0,27	0,28	0,29
Construction	1,45	1,35	1,16	1,22	1,01	1,06	0,97	0,85
Trade	2,47	2,41	2,32	2,34	2,36	2,25	2,08	2,02
Transport, storage and communication	1,01	0,86	0,81	0,80	0,80	0,81	0,75	0,72
Activities auxiliary to financial intermediation, real estate and other business services (excluding financial intermediation, insurance, pension funding and business services not elsewhere classified)	0,33	0,35	0,35	0,34	0,33	0,31	0,32	0,30
Community, social and personal services (excluding government and educational institutions)	1,30	1,27	1,20	1,23	1,11	1,12	0,99	0,90

13.11 Comparison of operating ratios between 2014 and 2021 - Net profit margin ratio⁷

	2014	2015	2016	2017	2018	2019	2020	2021
Forestry and fishing	0,09	0,11	0,13	0,12	0,07	0,10	0,07	0,06
Mining and quarrying	0,01	-0,03	-0,08	0,04	0,01	0,08	0,05	0,18
Manufacturing	0,04	0,04	0,03	0,05	0,04	0,03	0,01	0,02
Electricity, gas and water supply	0,06	0,05	0,05	0,03	0,03	-0,04	-0,03	-0,02
Construction	0,04	0,03	0,03	0,03	0,02	0,03	0,03	0,01
Trade	0,02	0,03	0,02	0,03	0,03	0,02	0,02	0,03
Transport, storage and communication	0,05	0,04	0,04	0,05	0,05	0,03	0,03	0,00
Activities auxiliary to financial intermediation, real estate and other business services (excluding financial intermediation, insurance, pension funding and business services not elsewhere classified)	0,23	0,20	0,18	0,21	0,17	0,16	0,03	0,11
Community, social and personal services (excluding government and educational institutions)	0,10	0,13	0,11	0,10	0,09	0,08	0,08	0,07

13.12 Comparison of operating ratios between 2014 and 2021 - Return on equity⁸

	2014	2015	2016	2017	2018	2019	2020	2021
Forestry and fishing	0,15	0,18	0,20	0,20	0,11	0,14	0,09	0,08
Mining and quarrying	0,01	-0,04	-0,11	0,06	0,02	0,13	0,10	0,30
Manufacturing	0,17	0,17	0,12	0,18	0,15	0,13	0,04	0,08
Electricity, gas and water supply	0,08	0,06	0,05	0,04	0,04	-0,06	-0,04	-0,02
Construction	0,21	0,15	0,18	0,17	0,07	0,13	0,11	0,04
Trade	0,22	0,22	0,18	0,24	0,21	0,17	0,14	0,16
Transport, storage and communication	0,19	0,13	0,13	0,13	0,13	0,07	0,07	-0,01
Activities auxiliary to financial intermediation, real estate and other business services (excluding financial intermediation, insurance, pension funding and business services not elsewhere classified)	0,20	0,17	0,14	0,16	0,15	0,13	0,02	0,09
Community, social and personal services (excluding government and educational institutions)	0,30	0,36	0,29	0,30	0,24	0,20	0,19	0,18

14

Selected internal trade activities

Selected internal trade activities

14.1	Summary of internal trade statistics, 2011-2020 (R millions)	125
14.2	Summary of tourist accommodation statistics, 2011-2020	126
14.3	Food and beverages, 2011-2020 (R millions)	127

14.1 Summary of internal trade statistics, 2011-2020 (R millions)

	2011	2012	2013	2014	2015	2016	2017	2018	2019	2020
Wholesale trade sales										
Sales at current prices	1 347 259	1 527 858	1 707 146	1 834 340	1 858 617	2 020 728	2 057 297	2 192 817	2 254 380	2 118 183
Sales at constant (2000) prices	1 586 327	1 701 321	1 794 361	1 808 914	1 858 618	1 902 289	1 841 570	1 839 275	1 815 324	1 696 004
Retail trade sales										
Sales at current prices	654 287	711 185	758 999	814 810	876 635	947 316	1 015 643	1 056 444	1 096 706	1 050 422
Sales at constant (2008) prices	776 442	810 152	831 668	847 078	876 635	893 716	924 932	945 675	956 928	890 718
Motor trade sales										
Sales at current prices	484 381	538 809	582 787	602 437	601 515	613 139	638 355	666 424	670 692	560 665

Sources: Stats SA, *Wholesale trade sales* (Statistical release P6141.2), *Retail trade sales* (Statistical release P6242.1) and *Motor trade sales* (Statistical release P6343.2)

Stats SA introduced new wholesale trade sales, retail trade sales and motor trade sales surveys utilising an upgraded business register commencing with the month of July 2017. The previous surveys and the current ones were run side by side from April to June 2017, which provided a set of factors that could be applied to the old series to revise previous estimates back to the start of the series. The figures up to March 2017 were backcasted based on the movements of the old series and the level of the new series.

14.2 Summary of tourist accommodation statistics, 2011-2020

	2011	2012	2013	2014	2015	2016	2017	2018	2019	2020
Stay units										
Stay units available (thousands)	121,8	123,4	124,1	125,0	126,1	126,7	126,9	127,3	127,2	127,1
Stay unit nights sold (thousands)	20 072,8	21 415,9	22 520,9	23 386,3	23 014,0	23 535,8	23 125,0	22 473,2	22 387,5	9 325,4
Occupancy rate (%)	45,2	47,4	49,8	51,3	50,0	50,8	49,9	48,4	48,2	20,1
Income (R millions)										
Income per stay unit nights sold	8 518,5	8 893,1	9 557,5	10 098,5	11 113,0	12 120,1	12 907,5	13 237,5	13 530,0	11 196,9
Income from accommodation	14 286,3	15 914,2	18 011,2	19 735,0	21 394,2	23 839,7	24 928,5	24 846,4	25 285,1	9 818,5
Income from restaurant and bar sales	5 247,2	5 596,3	6 094,7	6 402,9	6 934,9	7 722,4	7 895,7	7 862,6	7 819,7	3 144,4
Other income	10 507,9	11 575,1	13 145,5	14 057,0	14 775,9	15 146,8	14 945,0	15 016,1	15 573,0	5 892,6
Total income	30 041,4	33 085,6	37 251,4	40 194,9	43 105,0	46 708,9	47 769,2	47 725,1	48 677,8	18 855,5

Source: Stats SA, *Tourist accommodation* (Statistical release P6410)

The hotel trading statistics survey has been discontinued since March 2004. It has been replaced by the Tourist accommodation survey, which started in September 2004. The Tourist accommodation survey includes bed and breakfast establishments, guest houses, hotels, lodges, self-catering accommodation, caravan parks and camping sites and, other accommodation establishments.

Figures for the last twelve months are regarded as preliminary.

14.3 Food and beverages, 2011-2020 (R millions)

	2011	2012	2013	2014	2015	2016	2017	2018	2019	2020
Income from food sales at current prices	35 069,7	37 861,5	40 434,6	43 496,0	47 034,5	51 280,9	54 599,9	60 717,5	65 059,1	65 059,1
Income from food sales at constant (2015) prices	45 914,8	46 251,2	46 332,2	46 251,7	47 034,6	47 736,8	47 835,0	50 003,3	51 364,5	31 436,9
Income from bar sales at current prices	3 355,1	3 779,5	3 966,5	3 856,1	3 970,6	4 122,5	4 379,2	4 475,8	4 637,3	1 891,7
Income from bar sales at constant (2015) prices	4 423,1	4 670,7	4 722,5	4 154,0	3 970,3	3 957,4	4 037,8	3 913,8	3 891,6	1 553,6
Other income at current prices	1 721,4	1 600,1	1 764,6	1 801,0	1 859,4	1 690,7	1 704,6	1 666,5	1 719,2	929,4
Other income at constant (2015) prices	2 254,8	1 960,8	2 032,3	1 920,0	1 859,7	1 580,5	1 503,8	1 384,7	1 370,5	722,6
Total income at current prices	40 146,2	43 241,1	46 165,7	49 153,1	52 864,5	57 094,1	60 683,7	66 859,8	71 415,6	43 654,9
Total income at constant (2015) prices	52 592,7	52 882,7	53 087,0	52 325,7	52 864,6	53 274,7	53 376,6	55 301,8	66 859,8	33 713,1

Source: Stats SA, *Food and beverages* (Statistical release P6420)

The food and beverages survey is a monthly survey covering a sample of public and private enterprises involved in the preparation of meals and drinks for immediate consumption in South Africa.

The purpose of this survey is to monitor trends in the food and beverages industry.

Figures for the last twelve months are regarded as preliminary.

15

Social services and housing

Social services and housing

15.1	Number of households by type of dwelling by province, 2017-2021 (thousands)	132
15.2	Number of households by energy source for cooking by province, 2017-2021 (thousands)	136
15.3	Number of households by energy source for heating by province, 2017-2021 (thousands)	138
15.4	Number of households by energy source for lighting by province, 2017-2021 (thousands)	140
15.5	Number of households by main source of water by province, 2017-2021 (thousands)	142
15.6	Number of households by energy source for cooking, for heating and for lighting, by population group of the household head, 2017-2021 (thousands)	147
15.7	Number of households by sanitation facility by population group of the household head, 2017-2021 (thousands)	150
15.8	Number of households by type of refuse removal by population group of the household head, 2017-2021 (thousands)	153
15.9	Number of households with or without a telephone facility, by population group and gender of the household head, 2017-2021 (thousands)	157
15.10	Number of consumer units receiving water and free basic water services from municipalities, by province, 2011-2020	158
15.11	Number of consumer units receiving electricity and free basic electricity services from municipalities, by province, 2011-2020	160

Notes for tables 15.1 to 15.9

Source: Stats SA, *General household survey* (Statistical release P0318)

† For numbers of 10 000 or less the sample size is too small for reliable estimates.

15.1 Number of households by type of dwelling by province, 2017-2021 (thousands)

Type of dwelling	Western Cape	Eastern Cape	Northern Cape	Free State	KwaZulu-Natal	North West	Gauteng	Mpumalanga	Limpopo	South Africa
House on a separate yard or on farm										
2017	986	945	248	635	1 724	791	2 534	964	1 256	10 083
2018	1 049	974	261	673	1 834	835	2 554	999	1 319	10 499
2019	1 127	1 113	274	684	2 039	909	2 698	1 127	1 449	11 420
2020	1 133	1 126	278	725	2 331	985	2 857	1 153	1 513	12 100
2021	1 288	1 156	278	725	2 329	961	3 010	1 222	1 548	12 518
Traditional dwelling made of traditional material										
2017	†	371	†	16	406	†	†	48	42	898
2018	..	345	†	20	365	†	†	50	34	831
2019	†	392	†	12	392	†	†	41	19	875
2020	..	360	†	20	279	†	..	55	16	740
2021	†	373	†	19	289	†	†	43	12	748
Flat or apartment in a block of flats										
2017	164	53	†	24	153	26	350	21	†	803
2018	182	59	†	13	141	17	340	22	†	786
2019	144	18	†	25	116	25	391	30	†	759
2020	216	30	†	17	83	11	358	13	†	737
2021	144	†	†	16	123	..	344	†	†	653

15.1 Number of households by type of dwelling by province, 2017-2021 (thousands) (cont.)

Type of dwelling	Western Cape	Eastern Cape	Northern Cape	Free State	KwaZulu-Natal	North West	Gauteng	Mpumalanga	Limpopo	South Africa
Cluster house in complex										
2017	18	†	†	..	†	†	58	†	†	100
2018	11	†	†	†	†	†	104	†	..	143
2019	23	†	..	†	14	..	60	†	..	105
2020	16	†	†	..	35	58
2021	22	†	..	†	†	..	28	†	..	74
Town house										
2017	20	†	†	12	†	11	175	†	†	242
2018	46	†	†	14	†	†	191	†	†	286
2019	45	†	..	13	16	†	202	†	..	289
2020	44	†	†	24	†	..	208	283
2021	56	†	†	15	15	†	212	304
Semi detached house										
2017	179	39	†	†	15	†	21	†	†	277
2018	151	37	†	13	25	†	25	†	†	262
2019	177	33	†	..	57	..	15	†	†	292
2020	161	38	11	..	35	†	246
2021	121	57	18	†	29	†	†	242

15.1 Number of households by type of dwelling by province, 2017-2021 (thousands) (cont.)

Type of dwelling	Western Cape	Eastern Cape	Northern Cape	Free State	KwaZulu-Natal	North West	Gauteng	Mpumalanga	Limpopo	South Africa
Formal dwelling in backyard										
2017	16	13	†	16	47	38	422	14	50	620
2018	15	17	†	22	41	42	446	19	65	671
2019	25	†	†	11	26	41	534	11	39	698
2020	31	15	†	†	44	34	500	18	28	677
2021	20	†	..	†	44	44	587	†	22	737
Informal dwelling in backyard										
2017	149	27	†	51	25	67	480	31	29	869
2018	153	23	†	34	33	65	553	24	28	923
2019	117	23	†	33	40	37	401	12	18	685
2020	85	29	†	30	16	37	327	15	20	561
2021	113	15	†	22	37	69	368	†	15	651
Informal dwelling not in backyard										
2017	198	90	32	90	168	166	454	80	56	1 335
2018	204	82	31	78	162	160	412	84	48	1 261
2019	244	70	48	132	124	193	549	86	40	1 485
2020	260	82	41	103	73	144	617	73	26	1 418
2021	236	79	42	124	120	181	547	91	34	1 453

15.1 Number of households by type of dwelling by province, 2017-2021 (thousands) (concl.)

Type of dwelling	Western Cape	Eastern Cape	Northern Cape	Free State	KwaZulu-Natal	North West	Gauteng	Mpumalanga	Limpopo	South Africa
Servants quarter or granny flats										
2017	55	112	20	24	265	62	136	75	93	843
2018	40	125	17	26	284	65	159	81	76	875
2019	24	25	†	†	159	31	180	22	48	501
2020	†	21	†	†	158	48	217	27	34	522
2021	†	15	†	12	117	43	203	14	50	473
Other										
2017	36	†	†	†	†	..	66	†	..	117
2018	26	†	†	†	†	..	88	..	†	125
2019	†	†	†	†	†	..	35	..	†	51
2020	†	†	†	56	75
2021	†	†	†	74	95
Total										
2017	1 823	1 667	333	882	2 827	1 172	4 709	1 248	1 537	16 199
2018	1 877	1 685	342	901	2 905	1 210	4 884	1 289	1 579	16 671
2019	1 933	1 702	350	921	2 985	1 248	5 072	1 332	1 621	17 163
2020	1 962	1 709	354	931	3 026	1 267	5 174	1 354	1 641	17 418
2021	2 021	1 725	363	952	3 111	1 308	5 384	1 399	1 684	17 947

15.2 Number of households by energy source for cooking by province, 2017-2021 (thousands)

Energy source for cooking	Western Cape	Eastern Cape	Northern Cape	Free State	KwaZulu-Natal	North West	Gauteng	Mpumalanga	Limpopo	South Africa
Electricity from mains										
2017	1 455	1 246	283	754	2 207	896	3 605	926	925	12 298
2018	1 542	1 313	298	792	2 260	965	3 681	966	981	12 799
2019	1 475	1 309	295	795	2 362	961	3 723	959	1 008	12 886
2020	1 587	1 319	308	796	2 546	1 028	4 078	1 009	996	13 667
2021	1 627	1 341	301	830	2 561	1 031	4 167	998	1 086	13 943
Gas										
2017	211	86	28	45	59	28	160	22	35	672
2018	185	70	22	39	48	24	151	27	32	598
2019	255	81	25	33	62	25	193	27	19	719
2020	264	125	39	44	45	23	194	34	14	781
2021	308	115	33	36	55	20	262	24	11	863
Paraffin										
2017	29	119	†	33	61	58	320	47	14	686
2018	25	113	†	28	49	53	281	35	†	598
2019	13	68	†	29	57	62	368	43	21	671
2020	†	68	†	40	26	56	344	43	†	589
2021	14	68	†	34	50	67	312	61	22	629

15.2 Number of households by energy source for cooking by province, 2017-2021 (thousands) (concl.)

Energy source for cooking	Western Cape	Eastern Cape	Northern Cape	Free State	KwaZulu-Natal	North West	Gauteng	Mpumalanga	Limpopo	South Africa
Wood										
2017	13	156	14	25	347	68	26	207	501	1 357
2018	15	132	12	25	302	69	27	208	498	1 289
2019	†	179	13	32	250	94	14	222	521	1 334
2020	†	164	†	32	252	93	21	221	609	1 402
2021	†	155	27	25	265	83	25	243	553	1 380
Coal										
2017	†	†	..	16	33	†	65
2018	..	†	†	†	†	..	11	39	†	71
2019	..	†	..	†	†	†	†	40	†	62
2020	..	†	†	†	†	..	†	35	..	50
2021	†	†	..	†	50	..	66
Total										
2017	1 823	1 667	333	882	2 827	1 172	4 709	1 248	1 537	16 199
2018	1 877	1 685	342	901	2 905	1 210	4 884	1 289	1 579	16 671
2019	1 933	1 702	350	921	2 985	1 248	5 072	1 332	1 621	17 163
2020	1 962	1 709	354	931	3 026	1 267	5 174	1 354	1 641	17 418
2021	2 021	1 725	363	952	3 111	1 308	5 384	1 399	1 684	17 947

15.3 Number of households by energy source for heating by province, 2017-2021 (thousands)

Energy source for heating	Western Cape	Eastern Cape	Northern Cape	Free State	KwaZulu-Natal	North West	Gauteng	Mpumalanga	Limpopo	South Africa
Electricity from mains										
2017	456	194	136	315	932	372	2 404	424	304	5 537
2018	553	225	141	321	907	437	2 477	448	308	5 817
2019	923	410	172	416	1 718	619	2 846	481	704	8 288
2020	924	381	185	424	2 068	598	3 169	454	711	8 915
2021	994	267	171	471	1 869	635	3 143	438	740	8 727
Gas										
2017	65	31	†	42	14	13	216	31	†	425
2018	67	34	†	45	21	†	200	38	†	428
2019	83	32	11	33	25	12	217	28	†	445
2020	100	46	13	37	18	18	237	32	..	500
2021	107	100	12	63	18	12	298	39	†	655
Paraffin										
2017	184	436	†	180	22	†	145	†	†	994
2018	195	452	†	170	28	19	128	11	†	1 010
2019	172	417	†	209	21	21	149	†	12	1 016
2020	276	510	†	219	16	14	122	†	†	1 177
2021	215	507	†	180	37	14	126	†	†	1 090
Wood										
2017	99	395	68	88	499	126	117	197	378	1 966
2018	84	412	57	86	497	136	93	207	309	1 879
2019	55	363	48	69	367	129	105	194	367	1 698
2020	74	395	33	60	402	110	119	225	397	1 816
2021	104	367	75	58	452	144	97	231	399	1 928

15.3 Number of households by energy source for heating by province, 2017-2021 (thousands) (concl.)

Energy source for heating	Western Cape	Eastern Cape	Northern Cape	Free State	KwaZulu-Natal	North West	Gauteng	Mpumalanga	Limpopo	South Africa
Coal										
2017	†	†	†	18	15	†	80	102	†	228
2018	..	†	†	19	12	†	68	102	†	217
2019	†	†	..	11	13	..	73	82	†	188
2020	..	†	†	†	21	..	90	128	..	252
2021	..	†	†	20	14	..	56	126	†	220
Other										
2017	155	61	†	27	168	56	231	62	57	819
2018	12	†	..	†	54	..	80	17	16	189
2019	14	†	†	†	41	†	51	†	†	146
2020	..	†	†	†	†	†	29	†	†	63
2021	12	18	†	†	11	†	58	12	†	128
Total										
2017	1 823	1 667	333	882	2 827	1 172	4 709	1 248	1 537	16 199
2018	1 877	1 685	342	901	2 905	1 210	4 884	1 289	1 579	16 671
2019	1 933	1 702	350	921	2 985	1 248	5 072	1 332	1 621	17 163
2020	1 962	1 709	354	931	3 026	1 267	5 174	1 354	1 641	17 418
2021	2 021	1 725	363	952	3 111	1 308	5 384	1 399	1 684	17 947

15.4 Number of households by energy source for lighting by province, 2017-2021 (thousands)

Energy source for lighting	Western Cape	Eastern Cape	Northern Cape	Free State	KwaZulu-Natal	North West	Gauteng	Mpumalanga	Limpopo	South Africa
Electricity from mains										
2017	1 654	1 446	307	818	2 484	958	3 798	1 148	1 408	14 021
2018	1 731	1 495	318	852	2 500	1 034	3 868	1 207	1 465	14 471
2019	1 699	1 510	318	844	2 577	1 013	3 871	1 198	1 508	14 538
2020	1 816	1 583	344	843	2 789	1 097	4 225	1 243	1 589	15 531
2021	1 900	1 593	332	871	2 842	1 082	4 349	1 260	1 625	15 853
Paraffin										
2017	14	88	†	†	13	25	78	19	†	259
2018	16	78	†	†	†	20	57	12	..	196
2019	15	61	†	†	15	21	86	12	†	225
2020	12	64	†	†	†	25	65	†	†	193
2021	†	58	†	†	15	20	77	12	..	201

15.4 Number of households by energy source for lighting by province, 2017-2021 (thousands) (concl.)

Energy source for lighting	Western Cape	Eastern Cape	Northern Cape	Free State	KwaZulu-Natal	North West	Gauteng	Mpumalanga	Limpopo	South Africa
Candles										
2017	29	51	11	34	166	69	238	63	48	709
2018	23	36	12	32	132	57	220	58	48	617
2019	15	46	15	47	130	102	303	80	47	786
2020	11	24	†	51	78	64	312	76	30	651
2021	31	18	15	49	81	96	267	95	45	697
Total										
2017	1 823	1 667	333	882	2 827	1 172	4 709	1 248	1 537	16 199
2018	1 877	1 685	342	901	2 905	1 210	4 884	1 289	1 579	16 671
2019	1 933	1 702	350	921	2 985	1 248	5 072	1 332	1 621	17 163
2020	1 962	1 709	354	931	3 026	1 267	5 174	1 354	1 641	17 418
2021	2 021	1 725	363	952	3 111	1 308	5 384	1 399	1 684	17 947

15.5 Number of households by main source of water by province, 2017-2021 (thousands)

Main source of water	Western Cape	Eastern Cape	Northern Cape	Free State	KwaZulu-Natal	North West	Gauteng	Mpumalanga	Limpopo	South Africa
Piped water in the dwelling or house										
2017	1 380	563	164	400	1 097	328	3 049	373	205	7 561
2018	1 440	611	171	386	1 135	332	3 074	362	211	7 722
2019	1 467	579	184	367	1 122	325	3 073	396	194	7 708
2020	1 502	655	198	418	1 193	378	3 217	390	170	8 122
2021	1 578	651	185	353	1 141	302	3 302	416	191	8 119
Piped water in yard										
2017	237	235	107	373	773	431	1 249	539	518	4 463
2018	230	235	114	389	849	428	1 411	592	510	4 758
2019	225	252	96	400	905	429	1 507	537	548	4 898
2020	188	191	84	398	934	473	1 505	595	569	4 936
2021	223	177	83	467	1 032	532	1 642	574	550	5 280

15.5 Number of households by main source of water by province, 2017-2021 (thousands) (cont.)

Main source of water	Western Cape	Eastern Cape	Northern Cape	Free State	KwaZulu-Natal	North West	Gauteng	Mpumalanga	Limpopo	South Africa
Rain-water tank in yard										
2017	†	148	†	..	23	†	†	†	†	184
2018	†	167	26	†	†	205
2019	11	196	..	†	28	†	†	..	†	244
2020	12	172	19	†	†	212
2021	..	237	32	..	†	†	†	274
Neighbours tap										
2017	†	26	†	14	73	41	23	62	100	348
2018	†	18	†	11	71	40	22	63	82	314
2019	12	33	†	21	100	56	35	88	84	433
2020	†	11	†	21	49	49	30	55	65	288
2021	†	18	†	23	64	61	32	70	63	337
Borehole in yard										
2017	†	†	†	†	15	56	30	36	166	324
2018	†	†	†	†	13	57	32	45	174	353
2019	†	†	11	15	29	76	27	32	165	373
2020	..	†	21	..	33	60	18	21	165	325
2021	†	†	†	†	25	85	44	20	204	405

15.5 Number of households by main source of water by province, 2017-2021 (thousands) (cont.)

Main source of water	Western Cape	Eastern Cape	Northern Cape	Free State	KwaZulu-Natal	North West	Gauteng	Mpumalanga	Limpopo	South Africa
Communal tap										
2017	178	413	44	31	446	205	250	92	325	1 984
2018	178	401	37	36	461	230	237	98	367	2 044
2019	200	394	44	59	423	215	337	113	310	2 095
2020	237	376	42	33	454	206	316	150	366	2 179
2021	205	379	58	49	469	195	324	145	366	2 190
Tanker										
2017	†	16	†	37	99	87	76	73	102	495
2018	†	14	†	46	78	93	82	73	115	506
2019	†	†	†	40	72	109	60	97	178	574
2020	..	34	†	50	96	77	69	96	187	616
2021	†	27	21	39	99	107	23	104	178	598
Borehole outside yard										
2017	†	56	†	18	66	20	14	31	57	266
2018	†	22	†	18	69	22	18	30	72	257
2019	†	†	†	15	82	33	18	24	53	234
2020	14	†	..	†	59	18	†	29	52	189
2021	..	†	†	†	39	25	†	45	29	167

15.5 Number of households by main source of water by province, 2017-2021 (thousands) (cont.)

Main source of water	Western Cape	Eastern Cape	Northern Cape	Free State	KwaZulu-Natal	North West	Gauteng	Mpumalanga	Limpopo	South Africa
River or stream										
2017	†	113	†	..	127	†	12	263
2018	†	131	†	..	125	†	†	279
2019	†	113	122	†	22	266
2020	..	171	†	†	116	†	32	327
2021	†	124	†	..	148	†	33	318
Stagnant pool or dam										
2017	†	†	..	†	21	..	†	..	†	29
2018	..	†	15	..	†	..	†	23
2019	..	†	14	†	19
2020	..	†	13	†	..	26
2021	..	†	12	†	25
Well										
2017	†	†	32	†	†	14	11	69
2018	..	†	..	†	27	†	†	†	†	42
2019	..	†	..	†	26	†	†	27	18	81
2020	33	†	..	†	†	43
2021	..	†	..	†	19	†	†	36

15.5 Number of households by main source of water by province, 2017-2021 (thousands) (concl.)

Main source of water	Western Cape	Eastern Cape	Northern Cape	Free State	KwaZulu-Natal	North West	Gauteng	Mpumalanga	Limpopo	South Africa
Spring										
2017	†	83	21	..	†	†	12	125
2018	..	67	..	†	22	†	†	104
2019	†	99	49	†	†	160
2020	..	75	..	†	13	†	101
2021	..	74	12	†	†	101
Other										
2017	..	†	†	†	35	†	†	12	27	89
2018	†	†	..	†	13	†	†	†	24	65
2019	†	†	†	..	13	†	13	†	33	77
2020	†	†	15	†	†	†	23	56
2021	†	13	19	†	†	†	47	96
Total¹										
2017	1 823	1 667	333	882	2 827	1 172	4 709	1 248	1 537	16 199
2018	1 877	1 685	342	901	2 905	1 210	4 884	1 289	1 579	16 671
2019	1 933	1 702	350	921	2 985	1 248	5 072	1 332	1 621	17 163
2020	1 962	1 709	354	931	3 026	1 267	5 174	1 354	1 641	17 418
2021	2 021	1 725	363	952	3 111	1 308	5 384	1 399	1 684	17 947

15.6 Number of households by energy source for cooking, for heating and for lighting, by population group of the household head, 2017-2021 (thousands)

Energy source	Cooking			Heating			Lighting		
	Black African	Other ¹	Total	Black African	Other ¹	Total	Black African	Other ¹	Total
Electricity from mains									
2017	9 575	2 723	12 298	3 947	1 590	5 537	10 966	3 055	14 021
2018	10 036	2 763	12 799	4 193	1 624	5 817	11 378	3 092	14 471
2019	10 187	2 699	12 886	6 137	2 151	8 288	11 464	3 074	14 538
2020	10 919	2 747	13 667	6 671	2 244	8 915	12 397	3 133	15 531
2021	11 207	2 735	13 943	6 612	2 115	8 727	12 706	3 147	15 853
Gas									
2017	333	339	672	201	223	425
2018	271	327	598	244	184	428
2019	326	394	719	246	199	445
2020	374	407	781	269	231	500
2021	420	443	863	397	258	655
Paraffin									
2017	677	†	686	981	12	994	253	†	259
2018	589	†	598	997	13	1 010	191	†	196
2019	657	13	671	997	18	1 016	220	†	225
2020	576	12	589	1 125	51	1 177	181	12	193
2021	618	12	629	1 069	20	1 090	195	†	201

¹ Other includes Coloured, Indian or Asian, White and unspecified population groups. These groups are aggregated due to the small sample size.

15.6 Number of households by energy source for cooking, for heating and for lighting, by population group of the household head, 2017-2021 (thousands) (cont.)

Energy source	Cooking			Heating			Lighting		
	Black African	Other ¹	Total	Black African	Other ¹	Total	Black African	Other ¹	Total
Wood									
2017	1 334	23	1 357	1 822	145	1 966
2018	1 264	25	1 289	1 759	119	1 879
2019	1 315	19	1 334	1 606	92	1 698
2020	1 402	..	1 402	1 756	59	1 816
2021	1 373	†	1 380	1 789	140	1 928
Coal									
2017	65	..	65	227	†	228
2018	69	†	71	205	12	217
2019	61	†	62	179	†	188
2020	49	†	50	249	†	252
2021	66	..	66	218	†	220
Candles									
2017	682	27	709
2018	594	23	617
2019	762	24	786
2020	644	†	651
2021	674	24	697

¹ Other includes Coloured, Indian or Asian, White and unspecified population groups. These groups are aggregated due to the small sample size.

15.6 Number of households by energy source for cooking, for heating and for lighting, by population group of the household head, 2017-2021 (thousands) (concl.)

Energy source	Cooking			Heating			Lighting		
	Black African	Other ¹	Total	Black African	Other ¹	Total	Black African	Other ¹	Total
None									
2017	636	183	819
2018	157	32	189
2019	126	20	146
2020	63	†	63
2021	116	11	128
Total									
2017	13 042	3 157	16 199	13 042	3 157	16 199	13 042	3 157	16 199
2018	13 493	3 178	16 671	13 493	3 178	16 671	13 493	3 178	16 671
2019	13 964	3 199	17 163	13 964	3 199	17 163	13 964	3 199	17 163
2020	14 209	3 208	17 418	14 209	3 208	17 418	14 209	3 208	17 418
2021	14 716	3 230	17 947	14 716	3 230	17 947	14 716	3 230	17 947

¹ Other includes Coloured, Indian or Asian, White and unspecified population groups. These groups are aggregated due to the small sample size.

15.7 Number of households by sanitation facility by population group of the household head, 2017-2021 (thousands)

Sanitation facility	Black African	Coloured	Indian or Asian	White	Total ¹
Flush toilet connected to public sewerage					
2017	6 947	1 054	379	1 479	9 859
2018	7 313	1 059	384	1 469	10 225
2019	7 309	1 107	399	1 474	10 289
2020	7 649	1 069	399	1 477	10 594
2021	7 887	1 096	403	1 482	10 867
Flush toilet connected to septic tank					
2017	484	63	†	100	655
2018	539	53	11	103	706
2019	577	40	†	94	721
2020	533	59	20	82	694
2021	584	68	15	83	749
Chemical toilet					
2017	169	†	†	†	171
2018	102	†	105
2019	122	†	..	†	127
2020	132	132
2021	133	..	†	..	134

¹ Total includes other and unspecified population groups.

15.7 Number of households by sanitation facility by population group of the household head, 2017-2021 (thousands) (cont.)

Sanitation facility	Black African	Coloured	Indian or Asian	White	Total ¹
Pit latrine with ventilation pipe					
2017	2 788	19	†	†	2 812
2018	2 836	27	†	†	2 867
2019	3 047	19	†	..	3 070
2020	3 149	39	..	†	3 190
2021	3 437	26	3 463
Pit latrine without ventilation pipe					
2017	2 051	18	†	†	2 074
2018	2 204	13	†	†	2 225
2019	2 446	†	†	†	2 457
2020	2 433	20	2 454
2021	2 389	†	†	..	2 400
Bucket toilet					
2017	228	†	..	†	238
2018	206	18	..	†	226
2019	174	13	†	..	187
2020	109	22	131
2021	127	24	151

¹ Total includes other and unspecified population groups.

15.7 Number of households by sanitation facility by population group of the household head, 2017-2021 (thousands) (concl.)

Sanitation facility	Black African	Coloured	Indian or Asian	White	Total ¹
None					
2017	273	†	281
2018	220	12	232
2019	218	13	231
2020	102	†	106
2021	108	†	112
Other					
2017	76	76
2018	40	†	..	†	46
2019	71	†	76
2020	88	†	94
2021	26	11	†	..	44
Total					
2017	13 017	1 172	394	1 583	16 166
2018	13 461	1 187	405	1 578	16 631
2019	13 963	1 210	414	1 572	17 158
2020	14 197	1 219	418	1 560	17 395
2021	14 700	1 239	427	1 564	17 930

¹ Total includes other and unspecified population groups.

15.8 Number of households by type of refuse removal by population group of the household head, 2017-2021 (thousands)

Type of refuse removal	Black African	Coloured	Indian or Asian	White	Total ¹
Removed by local authority/private company/community members at least once a week					
2017	7 427	1 084	379	1 475	10 366
2018	7 619	1 077	382	1 458	10 536
2019	7 202	1 082	396	1 416	10 096
2020	7 614	1 108	408	1 399	10 530
2021	7 845	1 124	398	1 442	10 810
Removed by local authority/private company/community members less often than once a week					
2017	213	11	†	13	241
2018	224	17	†	27	275
2019	360	23	†	28	416
2020	344	12	..	22	378
2021	403	21	17	23	463
Communal refuse dump					
2017	442	17	†	22	481
2018	516	33	†	18	570
2019	727	28	†	43	801
2020	856	33	..	77	966
2021	1 126	31	†	21	1 186

¹ Total includes other and unspecified population groups.

² The categories of the questionnaire were changed from 2019. Therefore, figures for this variable were discontinued.

15.8 Number of households by type of refuse removal by population group of the household head, 2014-2018 (thousands) (cont.)

Type of refuse removal	Black African	Coloured	Indian or Asian	White	Total ¹
Own refuse dump					
2017	4 143	27	†	54	4 232
2018	4 410	34	†	55	4 507
2019	5 079	61	†	77	5 224
2020	4 887	48	†	57	5 003
2021	4 976	44	†	76	5 101
Dump or leave rubbish anywhere					
2017	316	†	†	†	324
2018	311	†	..	†	323
2019	526	13	†	†	543
2020	404	†	..	†	415
2021	274	†	279
Other					
2017	64	†	..	†	75
2018	73	†	..	†	84
2019	70	†	..	†	79
2020	91	†	..	†	103
2021	76	14	..	†	92

¹ Total includes other and unspecified population groups.

15.8 Number of households by type of refuse removal by population group of the household head, 2017-2021 (thousands) (concl.)

Type of refuse removal	Black African	Coloured	Indian or Asian	White	Total ¹
Total					
2017	12 605	1 155	393	1 566	15 719
2018	13 152	1 180	401	1 562	16 295
2019	13 963	1 210	414	1 572	17 159
2020	14 197	1 219	418	1 560	17 395
2021	14 700	1 239	427	1 564	17 930

¹Total includes other and unspecified population groups.

15.9 Number of households with or without a telephone facility, by population group and gender of the household head, 2017-2021 (thousands)

Telephone facility	Black African			Coloured			Indian or Asian			White			Total ¹		
	M	F	T	M	F	T	M	F	T	M	F	T	M	F	T
Yes															
2017	7 107	5 461	12 567	633	455	1 088	282	110	391	1 110	476	1 586	9 131	6 502	15 633
2018	7 348	5 684	13 032	629	465	1 094	308	95	403	1 098	479	1 577	9 383	6 723	16 106
2019	7 563	5 857	13 420	635	477	1 111	291	116	407	1 083	484	1 567	9 572	6 935	16 507
2020	7 891	6 021	13 912	681	532	1 213	297	119	416	1 068	472	1 540	9 936	7 145	17 081
2021	8 117	6 231	14 348	682	533	1 214	301	123	424	1 059	489	1 549	10 160	7 376	17 535
No															
2017	284	191	474	46	38	84	†	†	†	†	†	†	333	233	566
2018	298	163	461	54	43	97	†	†	†	†	†	†	354	211	565
2019	349	194	544	52	47	98	†	†	†	†	†	†	409	247	656
2020	162	135	297	†	†	†	..	†	†	15	16	31	182	155	337
2021	216	152	368	12	12	24	..	†	†	12	†	15	240	171	411
Total															
2017	7 390	5 651	13 042	679	493	1 172	285	112	397	1 110	478	1 588	9 464	6 735	16 199
2018	7 646	5 847	13 493	683	508	1 191	309	97	405	1 099	482	1 582	9 737	6 934	16 671
2019	7 913	6 052	13 964	686	523	1 210	294	120	414	1 088	487	1 575	9 982	7 181	17 163
2020	8 052	6 157	14 209	686	533	1 219	297	122	418	1 083	488	1 571	10 118	7 300	17 418
2021	8 334	6 382	14 716	694	545	1 239	301	126	427	1 072	493	1 564	10 400	7 546	17 947

¹ Total includes other and unspecified population groups.

15.10 Number of consumer units receiving water and free basic water services from municipalities, by province, 2011-2020

	Western Cape			Eastern Cape			Northern Cape			Free State		
	Basic water	Free basic water	% free	Basic water	Free basic water	% free	Basic water	Free basic water	% free	Basic water	Free basic water	% free
2011	1 023 117	824 571	80,6	1 496 300	752 338	50,3	240 435	89 165	37,1	725 191	311 299	42,9
2012	1 181 091	958 079	81,1	1 496 754	690 093	46,1	247 260	87 145	35,2	718 802	309 315	43,0
2013	1 202 348	944 844	78,6	1 494 344	678 014	45,4	271 919	91 240	33,6	770 967	272 151	35,3
2014	1 207 845	926 007	76,7	1 543 859	610 690	39,6	283 657	68 700	24,2	737 134	169 695	23,0
2015	1 273 861	1 019 484	80,0	1 578 702	696 452	44,1	290 293	93 856	32,3	763 988	151 112	19,8
2016	1 294 771	1 014 623	78,4	1 617 442	648 429	40,1	299 669	75 736	25,3	783 319	170 688	21,8
2017	1 307 972	1 006 413	76,9	1 618 670	680 697	42,1	296 706	65 665	22,1	781 950	143 615	18,4
2018	1 331 926	602 422	45,2	1 549 725	759 297	49,0	303 410	62 457	20,6	797 597	147 304	18,5
2019	1 359 588	591 999	43,5	1 439 206	520 322	36,2	317 165	65 704	20,7	890 873	137 433	15,4
2020	1 413 649	563 290	39,8	1 466 334	454 966	31,0	317 615	72 037	22,7	904 669	155 346	17,2

¹ Total includes other and unspecified population groups.

15.10 Number of consumer units receiving water and free basic water services from municipalities, by province, 2011-2020 (cont.)

	KwaZulu-Natal			North West			Gauteng			Mpumalanga		
	Basic water	Free basic water	% free	Basic water	Free basic water	% free	Basic water	Free basic water	% free	Basic water	Free basic water	% free
2011	1 919 351	700 904	36,5	713 216	269 202	37,7	2 799 716	373 448	13,3	940 433	429 102	45,6
2012	2 004 198	821 118	41,0	767 839	323 705	42,2	2 790 624	819 931	29,4	1 008 688	435 729	43,2
2013	2 068 512	814 266	39,4	840 751	188 894	22,5	2 850 080	1 077 660	37,8	1 021 837	581 307	56,9
2014	2 115 411	856 225	40,5	887 356	196 766	22,2	3 161 842	950 551	30,1	1 049 447	433 979	41,4
2015	2 145 210	764 438	35,6	889 140	133 443	15,0	3 198 426	930 300	29,1	1 081 728	357 417	33,0
2016	2 217 735	734 331	33,1	923 327	150 064	16,3	3 224 103	1 211 302	37,6	1 099 355	316 846	28,8
2017	2 264 355	763 835	33,7	915 237	118 297	12,9	3 286 414	1 263 801	38,5	1 089 918	389 908	35,8
2018	2 376 786	784 655	33,0	946 954	113 997	12,0	3 327 192	1 141 828	34,3	1 159 228	331 439	28,6
2019	2 376 876	765 633	32,2	1 085 427	88 074	8,1	3 554 964	1 028 573	28,9	1 207 995	91 836	7,6
2020	2 495 408	755 272	30,3	1 093 723	110 310	10,1	3 782 856	1 050 874	27,8	1 238 631	104 481	8,4

15.10 Number of consumer units receiving water and free basic water services from municipalities, by province, 2011-2020 (concl.)

	Limpopo			South Africa		
	Basic water	Free basic water	% free	Basic water	Free basic water	% free
2011	1 169 483	440 368	37,7	11 027 242	4 190 397	38,0
2012	1 207 169	451 424	37,4	11 422 425	4 896 539	42,9
2013	1 140 537	480 787	42,2	11 661 295	5 129 163	44,0
2014	1 221 715	459 973	37,6	12 208 266	4 672 586	38,3
2015	1 250 201	450 281	36,0	12 471 549	4 596 783	36,9
2016	1 258 327	366 904	29,2	12 718 048	4 688 923	36,9
2017	1 250 745	318 078	25,4	12 811 967	4 750 309	37,1
2018	1 348 179	122 755	9,1	13 140 997	4 066 154	30,9
2019	1 355 679	143 544	10,6	13 587 773	3 433 118	25,3
2020	1 405 007	111 295	7,9	14 117 892	3 377 871	23,9

15.11 Number of consumer units receiving electricity and free basic electricity services from municipalities, by province, 2011-2020

	Western Cape			Eastern Cape			Northern Cape			Free State		
	Basic electricity	Free basic electricity	% free	Basic electricity	Free basic electricity	% free	Basic electricity	Free basic electricity	% free	Basic electricity	Free basic electricity	% free
2011	1 215 410	538 083	44,3	997 571	355 200	35,6	248 465	97 397	39,2	656 332	305 454	46,5
2012	1 236 228	542 230	43,9	1 116 022	303 707	27,2	263 969	96 914	36,7	667 310	210 373	31,5
2013	1 241 350	560 877	45,2	1 144 731	313 343	27,4	267 951	68 292	25,5	697 926	171 847	24,6
2014	1 253 953	565 442	45,1	1 201 152	300 888	25,0	272 534	64 961	23,8	710 420	169 170	23,8
2015	1 304 843	549 590	42,1	1 239 198	329 928	26,6	281 695	68 528	24,3	729 206	144 663	19,8
2016	1 510 428	539 375	35,7	1 263 514	368 556	29,2	285 158	73 321	25,7	739 443	132 150	17,9
2017	1 555 668	501 721	32,3	1 294 748	359 715	27,8	283 419	67 055	23,7	744 624	142 705	19,2
2018	1 583 009	501 212	31,7	1 278 661	340 739	26,6	291 095	64 990	22,3	751 075	165 815	22,1
2019	1 610 901	458 960	28,5	1 359 406	366 355	26,9	309 713	66 284	21,4	814 880	146 418	18,0
2020	1 623 133	456 408	28,1	1 396 930	303 753	21,7	315 311	76 535	24,3	846 087	158 758	18,8

15.11 Number of consumer units receiving electricity and free basic electricity services from municipalities, by province, 2011-2020 (cont.)

	KwaZulu-Natal			North West			Gauteng			Mpumalanga		
	Basic electricity	Free basic electricity	% free	Basic electricity	Free basic electricity	% free	Basic electricity	Free basic electricity	% free	Basic electricity	Free basic electricity	% free
2011	1 526 952	193 048	12,6	775 743	143 813	18,5	1 925 463	344 709	17,9	670 271	271 474	40,5
2012	1 539 986	215 287	14,0	834 074	162 724	19,5	2 137 638	548 372	25,7	784 485	276 172	35,2
2013	1 609 718	180 181	11,2	876 531	152 030	17,3	2 182 341	677 341	31,0	788 862	262 848	33,3
2014	1 660 276	238 732	14,4	903 494	171 714	19,0	2 392 766	784 362	32,8	818 561	176 270	21,5
2015	1 733 630	282 547	16,3	929 815	156 862	16,9	2 519 827	496 829	19,7	905 790	166 430	18,4
2016	1 803 931	317 279	17,6	941 274	158 023	16,8	2 572 198	522 535	20,3	947 671	179 929	19,0
2017	1 836 827	317 187	17,3	954 109	167 976	17,6	2 587 195	710 248	27,5	979 186	150 814	15,4
2018	1 901 200	303 575	16,0	973 328	145 654	15,0	2 581 983	416 914	16,1	1 006 137	110 357	11,0
2019	1 934 004	306 022	15,8	1 059 097	109 181	10,3	2 634 520	727 773	27,6	1 020 848	83 409	8,2
2020	2 012 343	317 810	15,8	1 077 730	112 272	10,4	2 711 876	784 735	28,9	1 037 271	83 708	8,1

1.5.11 Number of consumer units receiving electricity and free basic electricity services from municipalities, by province, 2011-2020 (concl.)

	Limpopo			South Africa		
	Basic electricity	Free basic electricity	% free	Basic electricity	Free basic electricity	% free
2011	1 103 549	226 922	20,6	9 119 756	2 476 100	27,2
2012	1 169 008	199 398	17,1	9 748 720	2 555 177	26,2
2013	1 188 629	141 913	11,9	9 998 039	2 528 672	25,3
2014	1 227 732	151 804	12,4	10 440 888	2 623 343	25,1
2015	1 247 000	160 194	12,8	10 891 004	2 355 571	21,6
2016	1 286 058	163 735	12,7	11 349 675	2 454 903	21,6
2017	1 318 499	146 072	11,1	11 554 275	2 563 493	22,2
2018	1 417 608	130 265	9,2	11 784 096	2 179 521	18,5
2019	1 450 796	103 130	7,1	12 194 165	2 367 532	19,4
2020	1 459 317	80 004	5,5	12 479 998	2 373 983	19,0

16

Debts

Debts

16.1 Liquidations and insolvencies, 2012-2021 (numbers)

167

16.1 Liquidations and insolvencies, 2012-2021 (numbers)

	2012	2013	2014	2015	2016	2017	2018	2019	2020	2021
Companies liquidated										
Compulsory	175	117	222	140	113	123	128	135	156	105
Voluntary	1 084	1 031	806	829	899	835	844	944	1 008	952
Total	1 259	1 148	1 028	969	1 012	958	972	1 079	1 164	1 057
Close corporations liquidated										
Compulsory	142	94	144	98	87	88	71	123	106	65
Voluntary	1 315	1 132	892	895	835	822	802	840	765	810
Total	1 457	1 226	1 036	993	922	910	873	963	871	875
Total liquidations										
Compulsory	317	211	366	238	200	211	199	258	262	170
Voluntary	2 399	2 163	1 698	1 724	1 734	1 657	1 646	1 784	1 773	1 762
Total	2 716	2 374	2 064	1 962	1 934	1 868	1 845	2 042	2 035	1 932
Total insolvencies										
Individuals and partnerships	4 092	3 253	3 248	2 769	2 684	2 667	2 499	3 017	1 855	..

Source: Stats SA, *Statistics of liquidations and insolvencies* (Statistical release P0043)

Liquidations refer to corporate institutions such as companies and close corporations, while insolvencies refer to individuals.

17

National accounts

National accounts

17.1	Gross domestic product (GDP), 2011-2021 (R millions)	171
17.2	GDP percentage changes relative to the previous year, 2011-2021	171
17.3	Annualised percentage changes ¹ of the seasonally adjusted GDP at constant 2010 market prices, 2009-2021	172
17.4	GDP by industry at constant 2010 prices, 2011-2021 (R millions)	173
17.5	GDP by industry at current prices, 2011-2021 (R millions)	174

17.1 Gross domestic product (GDP), 2011-2021 (R millions)

	2011	2012	2013	2014	2015	2016	2017	2018	2019	2020	2021
GDP at constant 2015 market prices	4 099 714	4 197 952	4 302 291	4 363 118	4 420 793	4 450 171	4 501 702	4 570 232	4 584 101	4 293 356	4 504 292
GDP at current market prices	3 327 047	3 566 385	3 868 630	4 133 873	4 420 793	4 759 555	5 078 190	5 348 609	5 613 665	5 556 916	6 225 412

17.2 GDP percentage changes relative to the previous year, 2011-2021

	2011	2012	2013	2014	2015	2016	2017	2018	2019	2020	2021
GDP at constant 2015 market prices	3,2	2,4	2,5	1,4	1,3	0,7	1,2	1,5	0,3	-6,3	4,9

Source: Stats SA, *Gross domestic product: Annual estimates* (Statistical release P0441)

The GDP has been revised from 2018 and the base year has been changed from 2010 to 2015.

17.3 Percentage changes¹ of the seasonally adjusted GDP at constant 2015 market prices, 2009-2021

	First quarter	Second quarter	Third quarter	Fourth quarter
2009	-1,6	-0,3	0,2	0,7
2010	1,2	0,8	0,9	0,9
2011	1,0	0,6	0,4	0,7
2012	0,6	0,8	0,4	0,5
2013	0,8	0,7	0,5	0,5
2014	-0,1	0,4	0,5	0,7
2015	0,7	-0,8	0,5	0,4
2016	0,2	0,1	0,0	0,1
2017	0,5	0,5	0,2	0,4
2018	0,4	-0,2	1,3	0,4
2019	-0,9	0,4	0,1	0,0
2020	0,0	-17,1	13,8	2,7
2021	0,8	1,4	-1,8	1,4

Source: Stats SA, *Gross domestic product: Annual estimates* (Statistical release P0441)

The GDP has been revised from 2018 and the base year has been changed from 2010 to 2015.

¹ The annualised percentage change is the growth rate for a given quarter from the previous quarter and compounded to an annual rate.

17.4 GDP by industry at constant 2015 prices, 2011-2021 (R millions)

	2011	2012	2013	2014	2015	2016	2017	2018	2019	2020	2021
Agricultural, forestry and fishing	86 881	88 413	92 374	102 488	98 760	93 672	111 545	112 068	104 841	120 512	131 149
Mining and quarrying	218 847	212 476	220 882	217 524	227 875	220 141	225 420	223 612	222 188	196 005	219 523
Manufacturing	541 052	552 395	558 021	554 420	553 392	555 880	554 833	563 798	557 941	488 409	520 303
Electricity, gas and water supply	122 206	121 773	120 986	119 530	114 058	109 947	110 275	111 265	107 574	101 222	103 420
Construction	140 159	143 770	150 333	152 382	153 831	155 996	147 076	145 032	140 161	114 259	111 701
Wholesale and retail trade, hotels and restaurants	512 692	532 953	543 628	549 235	555 536	564 281	556 707	562 107	558 261	488 785	519 885
Transport, storage and communication	325 452	333 328	342 841	351 904	360 326	365 766	369 580	379 755	376 918	318 868	333 790
Finance, real estate and business services	838 886	863 846	886 386	906 851	921 868	938 154	961 364	993 560	1 018 520	1 025 264	1 059 054
General government services	305 595	313 874	326 120	336 183	344 540	351 165	356 086	362 979	368 065	370 512	371 044
Personal services	606 318	619 246	635 411	645 987	651 572	659 643	668 356	671 397	680 955	667 224	704 234
Total value added at basic prices	3 698 088	3 782 074	3 876 980	3 936 505	3 981 758	4 014 646	4 061 243	4 125 573	4 135 425	3 891 061	4 074 103
Taxes less subsidies on products	401 626	415 878	425 311	426 614	439 035	435 525	440 458	444 659	448 676	402 294	430 189
GDP at market prices	4 099 714	4 197 952	4 302 291	4 363 118	4 420 793	4 450 171	4 501 702	4 570 232	4 584 101	4 293 356	4 504 292

Source: Stats SA, *Gross domestic product: Annual estimates* (Statistical release P0441)

The GDP has been revised from 2018 and the base year has been changed from 2010 to 2015.

17.5 GDP by industry at current 2015 prices, 2011-2021 (R millions)

	2011	2012	2013	2014	2015	2016	2017	2018	2019	2020	2021
Agricultural, forestry and fishing	68 001	70 497	74 543	87 876	98 760	114 905	126 640	121 204	110 148	140 070	152 807
Mining and quarrying	216 442	218 985	238 283	239 209	227 875	251 631	268 306	287 588	314 382	351 790	474 946
Manufacturing	427 917	445 177	478 425	515 937	553 392	594 166	635 419	668 145	696 043	648 071	729 804
Electricity, gas and water supply	71 015	86 756	95 570	104 168	114 058	125 723	135 534	143 270	151 136	157 151	171 651
Construction	111 047	121 726	137 538	145 436	153 831	160 423	159 730	163 355	165 387	136 238	141 002
Wholesale and retail trade, hotels and restaurants	419 961	455 019	492 456	527 520	555 536	594 486	631 789	669 664	698 551	654 551	751 303
Transport, storage and communication	257 916	284 452	317 838	338 284	360 326	375 966	397 780	405 999	417 314	369 814	397 753
Finance, real estate and business services	731 783	763 080	812 425	861 201	921 868	992 299	1 068 220	1 138 225	1 206 927	1 229 160	1 320 471
General government services	236 801	257 291	286 076	316 312	344 540	375 698	401 769	415 303	438 690	474 647	498 256
Personal services	494 234	533 503	569 207	602 848	651 572	703 544	767 264	804 133	846 349	868 084	934 615
Total value added at basic prices	3 035 118	3 236 488	3 502 361	3 738 791	3 981 758	4 288 841	4 592 450	4 816 888	5 044 926	5 029 575	5 572 608
Taxes less subsidies on products	291 929	329 897	366 269	395 082	439 035	470 714	485 740	531 721	568 739	527 341	652 804
GDP at market prices	3 327 047	3 566 385	3 868 630	4 133 873	4 420 793	4 759 555	5 078 190	5 348 609	5 613 665	5 556 916	6 225 412

Source: Stats SA, *Gross domestic product: Annual estimates* (Statistical release P0441)

The GDP has been revised from 2018 and the base year has been changed from 2010 to 2015.

18

Government finances

Government finances

18.1	Actual capital expenditure by public sector institutions by type of expenditure, 2008-2021 (R billions)	178
18.2	Expenditure incurred by municipalities, by province, 2013-2020 updated (R thousands)	181
18.3	Revenue generated by municipalities, by province, 2013-2020 updated (R thousands)	186

Notes for table 18.1

Source: Stats SA, *Capital expenditure by the public sector* (Statistical release P9101)

Notes for tables 18.2 to 18.3

Source: Stats SA, *Financial census of municipalities* (Statistical release P9114)

Figures are for the years ended 30 June.

The questionnaire was changed to the new municipal accounting standard in 2005/2006. Not all municipalities are on the new standard yet.

18.1 Actual capital expenditure by public sector institutions by type of expenditure, 2008-2021 (R billions)

	2008	2009	2010	2011	2012	2013	2014	2015	2016	2017	2018	2019	2020	2021
New construction works														
National Government	3,02	3,30	0,74	1,58	2,67	5,14	5,93	7,14	10,51	7,93	5,71	5,45	4,68	4,43
Provincial Government	4,81	12,14	17,24	15,05	18,45	20,62	21,87	23,78	27,87	24,13	21,60	18,72	14,54	15,25
Extra-Budgetary Accounts and Funds	3,13	9,83	12,94	14,06	11,94	12,72	7,27	12,76	15,99	15,84	14,45	10,37	7,78	5,77
Municipalities	25,95	35,12	30,63	27,75	30,80	32,91	43,97	49,24	53,02	52,03	50,46	52,62	46,38	47,88
Public corporations	30,80	48,81	51,92	73,54	72,23	49,97	44,32	79,67	83,20	80,46	66,80	52,88	41,42	39,09
Higher education institutions	0,07	0,79	0,75	0,64	0,74	0,64	1,75	1,87	3,11	1,62	1,68	1,67	1,63	2,37
Total	67,78	109,99	114,22	132,62	136,83	122,00	125,11	174,46	193,70	182,01	160,70	141,71	116,43	114,78
Plant, machinery and equipment														
National Government	1,35	1,76	1,91	2,55	2,71	2,59	2,58	3,26	2,19	1,91	1,75	3,31	2,86	2,42
Provincial Government	2,11	2,64	2,52	2,19	3,10	2,48	2,63	3,06	2,79	3,55	3,33	3,46	4,51	4,81
Extra-Budgetary Accounts and Funds	1,12	2,08	2,56	1,58	1,72	1,27	9,34	2,86	2,05	2,22	1,95	2,19	1,74	1,72
Municipalities	1,48	2,20	3,45	3,11	3,32	5,04	3,38	3,60	5,39	5,04	4,40	4,96	3,91	3,68
Public corporations	23,52	32,31	24,96	13,70	25,45	54,21	74,87	46,87	40,51	37,14	37,32	29,09	27,98	25,6
Higher education institutions	1,06	1,26	1,38	1,60	1,50	1,65	1,91	2,49	2,09	2,05	1,86	2,22	1,79	2,53
Total	30,64	42,25	36,78	24,73	37,80	67,24	94,71	62,14	55,02	51,91	50,61	45,23	42,79	40,79
Transport equipment¹														
National Government	1,87	1,22	1,28	2,10	2,27	2,45	2,24	1,66	2,02	1,81	2,34	2,35	1,92	2,06
Provincial Government	0,51	0,53	0,59	0,74	1,39	1,32	1,35	1,70	1,23	0,84	1,14	0,80	1,17	1,70
Extra-Budgetary Accounts and Funds	0,50	0,42	0,50	0,73	0,61	0,63	0,80	0,94	0,81	0,80	1,03	0,92	0,80	1,22
Municipalities	0,91	1,77	1,39	0,97	1,13	1,90	1,40	1,27	1,48	1,24	1,71	2,16	2,68	2,18
Public corporations	1,29	1,69	0,79	0,46	1,17	1,31	3,34	0,76	2,16	1,62	0,99	1,54	0,78	0,14
Higher education institutions	0,07	0,06	0,06	0,06	0,04	0,10	0,08	0,07	0,07	0,08	0,08	0,12	0,06	0,07
Total	5,15	5,69	4,61	5,06	6,61	7,71	9,21	6,40	7,77	6,39	7,29	7,89	7,40	7,37

¹ These values formed part of plant, machinery and equipment until 2005. Since 2006 these values are recorded separately.

18.1 Actual capital expenditure by public sector institutions by type of expenditure, 2008-2021 (R billions) (cont.)

	2008	2009	2010	2011	2012	2013	2014	2015	2016	2017	2018	2019	2020	2021
Land and existing buildings														
National Government	1,52	3,47	4,50	4,79	3,81	3,80	3,00	4,17	3,00	2,92	3,69	3,69	2,56	2,35
Provincial Government	9,47	6,52	3,06	3,45	4,31	4,00	4,03	2,26	2,99	4,02	7,53	8,76	9,88	8,87
Extra-Budgetary Accounts and Funds	0,25	0,89	0,40	0,29	0,98	2,39	1,66	4,57	5,76	5,53	4,72	4,62	3,85	3,17
Municipalities	3,35	2,77	4,23	1,71	3,05	2,06	1,71	1,45	2,13	1,25	1,19	0,85	1,44	2,75
Public corporations	1,66	4,03	2,93	1,71	1,16	4,93	2,70	0,59	0,37	2,07	2,04	1,76	0,83	1,43
Higher education institutions	1,60	1,35	2,48	2,99	2,22	2,18	1,70	1,29	1,50	2,29	2,07	2,66	1,95	2,17
Total	17,85	19,03	17,60	14,94	15,53	19,36	14,80	14,33	15,75	18,08	21,24	22,34	20,51	20,74
Other fixed assets														
National Government	0,20	0,20	0,20	0,26	0,48	0,07	0,22	0,18	0,14	0,77	0,56	0,48	0,51	0,48
Provincial Government	0,16	0,09	0,13	0,11	0,11	0,22	0,11	0,21	0,31	0,22	0,22	0,20	0,31	0,33
Extra-Budgetary Accounts and Funds	0,44	0,50	0,51	0,62	0,59	0,98	1,07	0,96	1,31	2,00	1,13	0,97	2,67	1,74
Municipalities	0,49	0,49	0,75	0,54	0,49	1,16	0,58	0,61	1,54	1,45	1,28	1,16	1,36	1,29
Public corporations	1,22	1,52	1,22	0,98	2,70	4,93	4,00	3,89	4,04	5,21	2,97	3,32	3,12	2,12
Higher education institutions	0,19	0,20	0,25	0,33	0,34	0,35	0,12	0,11	0,06	0,03	0,17	0,16	0,14	0,19
Total	2,70	3,00	3,06	2,84	4,71	7,71	6,10	5,96	7,40	9,68	6,33	6,29	8,10	6,15

18.1 Actual capital expenditure by public sector institutions by type of expenditure, 2008-2021 (R billions) (concl.)

	2008	2009	2010	2011	2012	2013	2014	2015	2016	2017	2018	2019	2020	2021
Leased assets and investment property²														
National Government	0,00	0,00	0,00	0,00	0,00	0,00	0,00	0,00	0,49	0,70	1,06	0,99	0,96	0,96
Provincial Government	0,00	0,00	0,00	0,00	0,00	0,00	0,01	0,00	1,24	1,26	1,14	1,24	1,56	1,42
Extra-Budgetary Accounts and Funds	0,24	0,16	0,11	0,25	0,11	0,22	1,21	0,42	0,82	0,43	0,80	1,04	2,17	1,60
Municipalities	0,05	0,92	0,14	0,46	1,09	0,33	0,61	0,66	0,64	1,08	0,17	0,60	0,44	0,48
Public corporations	0,14	0,21	0,57	0,16	0,15	0,20	0,62	0,82	0,39	0,40	0,43	1,15	2,70	2,40
Higher education institutions	0,22	0,00	0,00	0,00	0,00	0,04	0,01	0,01	0,04	0,01	0,00	1,70	1,26	1,52
Total	0,65	1,29	0,82	0,87	1,35	0,79	2,46	1,91	3,62	3,88	3,60	6,72	9,09	8,38
Total														
National Government	7,97	9,95	8,63	11,27	11,95	14,04	13,98	16,41	18,36	16,03	15,11	16,26	13,48	12,70
Provincial Government	17,06	21,92	23,54	21,54	27,36	28,64	30,00	31,01	36,43	34,02	34,96	33,18	31,97	32,38
Extra-Budgetary Accounts and Funds	5,68	13,87	17,03	17,52	15,94	18,21	21,34	22,51	26,74	26,82	24,08	20,10	19,01	15,22
Municipalities	32,23	43,25	40,58	34,52	39,89	43,40	51,65	56,83	64,20	62,09	59,22	62,34	56,21	58,26
Public corporations	58,63	88,57	82,39	90,55	102,86	115,54	129,85	132,59	130,68	126,91	110,54	89,74	76,83	70,80
Higher education institutions	3,22	3,65	4,93	5,62	4,83	4,96	5,58	5,83	6,87	6,08	5,85	8,52	6,82	8,86
Total	124,79	181,21	177,10	181,02	202,83	224,79	252,40	265,18	283,28	271,95	249,76	230,14	204,32	198,22

²This item was added as a new variable as from 2008.

18.2 Expenditure incurred by municipalities, by province, 2013-2020 updated (R thousands)

	2013	2014	2015	2016	2017	2018	2019	2020
Eastern Cape								
Employee related costs	5 767 125	6 453 075	7 458 518	8 308 783	9 669 033	10 219 334	11 142 651	11 706 602
Remuneration of councillors	461 631	489 786	528 613	571 328	565 439	630 292	648 227	672 004
Interest paid	346 974	373 996	444 157	417 034	399 189	386 859	387 053	393 292
Bad debts	1 051 751	929 476	1 856 968	2 126 014	1 874 731	2 330 915	2 761 687	3 629 084
Contracted services	581 007	490 626	569 998	795 900	1 872 399	2 255 867	2 659 796	2 176 931
Repairs and maintenance	1 095 750	1 172 344	1 236 024	1 267 490	701 065	552 024	508 960	623 522
Purchases of water	334 602	381 645	431 555	489 226	517 486	549 989	594 326	624 560
Purchases of electricity	3 976 945	4 125 361	4 492 602	5 214 321	5 581 433	5 592 049	5 962 225	6 514 716
Free State								
Employee related costs	3 271 410	3 546 579	3 899 325	4 415 059	4 759 952	5 183 276	5 627 791	5 887 408
Remuneration of councillors	215 405	231 749	245 670	259 503	258 268	277 709	297 908	306 950
Interest paid	243 252	335 375	462 491	509 550	755 093	689 398	1 317 786	1 400 891
Bad debts	1 366 043	1 566 223	1 550 037	2 220 686	2 258 690	2 143 849	2 836 171	3 159 150
Contracted services	568 552	538 789	696 605	827 707	1 449 401	1 434 313	1 317 565	1 287 045
Repairs and maintenance	505 414	621 016	1 040 901	895 845	342 817	329 907	232 243	292 123
Purchases of water	788 115	945 799	1 116 048	1 150 024	1 231 124	1 307 721	1 773 638	1 381 667
Purchases of electricity	2 553 816	2 640 455	2 932 992	3 308 634	3 616 583	3 044 053	3 224 587	3 646 982

18.2 Expenditure incurred by municipalities, by province, 2013-2020 updated (R thousands) (cont.)

	2013	2014	2015	2016	2017	2018	2019	2020
Gauteng								
Employee related costs	20 265 760	22 200 536	23 706 931	26 098 266	28 061 854	29 840 405	33 912 179	39 396 256
Remuneration of councillors	411 173	457 219	488 147	517 581	539 330	597 624	628 167	625 147
Interest paid	2 859 752	2 980 375	3 344 127	4 111 577	5 000 842	5 540 882	5 500 643	5 688 608
Bad debts	5 628 803	7 010 048	8 701 952	6 011 832	9 798 171	8 749 324	12 881 904	16 990 177
Contracted services	3 229 147	3 544 693	7 068 960	7 354 005	4 788 477	5 242 342	6 905 143	7 479 239
Repairs and maintenance	3 971 432	4 119 277	4 156 586	5 264 249	4 567 864	4 897 430	4 591 019	4 127 173
Purchases of water	6 755 366	7 640 635	8 439 063	9 520 735	10 041 973	11 609 718	13 784 474	14 594 343
Purchases of electricity	23 072 121	24 028 875	25 663 630	28 478 711	30 777 108	30 644 566	32 327 629	36 401 946
KwaZulu-Natal								
Employee related costs	10 380 210	11 983 071	12 829 751	14 662 263	15 815 270	17 875 136	19 137 827	20 491 347
Remuneration of councillors	515 439	568 959	602 382	648 965	657 339	748 349	774 168	807 779
Interest paid	1 188 121	1 104 591	1 340 753	1 299 077	1 229 404	1 207 296	1 177 781	1 260 203
Bad debts	2 082 720	2 164 031	3 026 615	2 677 788	3 061 533	3 015 891	2 667 163	5 076 344
Contracted services	1 877 549	2 212 330	2 314 124	3 060 184	7 064 852	8 398 507	8 180 269	8 491 562
Repairs and maintenance	2 513 539	2 904 120	3 631 587	3 359 491	720 959	416 707	391 196	295 433
Purchases of water	2 168 247	2 357 658	2 636 624	2 691 167	2 813 602	3 334 457	4 113 907	5 232 157
Purchases of electricity	9 797 511	10 172 760	10 740 263	12 145 925	13 205 595	12 899 987	13 725 948	15 041 688

18.2 Expenditure incurred by municipalities, by province, 2013-2020 updated (R thousands) (cont.)

	2013	2014	2015	2016	2017	2018	2019	2020
Limpopo								
Employee related costs	3 280 337	3 676 526	4 061 552	4 453 245	4 625 065	5 165 129	5 678 959	6 176 331
Remuneration of councillors	325 302	353 322	379 366	407 862	423 217	471 593	501 604	512 507
Interest paid	102 853	113 454	130 655	156 698	161 842	239 164	297 474	412 163
Bad debts	792 958	828 805	987 309	932 351	862 784	1 517 803	1 120 586	1 036 850
Contracted services	203 229	256 756	312 781	366 432	1 718 846	2 225 752	2 380 121	2 386 597
Repairs and maintenance	587 832	687 965	730 830	861 497	626 263	520 698	528 998	452 559
Purchases of water	470 050	573 930	536 073	721 260	727 005	715 869	715 604	751 642
Purchases of electricity	1 442 682	1 533 999	1 703 437	1 963 591	2 091 782	2 106 593	2 277 920	2 425 407
Mpumalanga								
Employee related costs	2 971 733	3 392 767	3 787 547	4 247 192	4 568 822	5 266 099	5 777 771	6 314 971
Remuneration of councillors	252 938	274 012	295 355	304 718	314 033	349 159	369 083	391 553
Interest paid	209 457	277 793	367 490	408 102	418 227	566 859	1 029 872	1 060 941
Bad debts	720 110	811 614	1 205 335	1 731 725	1 121 180	1 787 047	2 025 134	2 423 948
Contracted services	537 087	679 869	884 274	941 812	1 906 965	1 804 144	2 227 798	2 289 923
Repairs and maintenance	523 404	632 486	674 386	774 706	275 868	113 274	58 291	36 649
Purchases of water	471 516	618 544	692 820	921 540	843 711	973 275	1 220 176	861 676
Purchases of electricity	2 416 311	3 126 340	2 929 563	3 307 350	3 557 346	3 599 777	4 010 297	4 365 107

18.2 Expenditure incurred by municipalities, by province, 2013-2020 updated (R thousands) (cont.)

	2013	2014	2015	2016	2017	2018	2019	2020
North West								
Employee related costs	2 777 822	3 132 251	3 452 310	3 743 332	3 919 664	4 199 527	4 679 802	5 047 441
Remuneration of councillors	244 657	269 292	294 937	299 303	299 256	350 765	384 359	897 874
Interest paid	186 655	255 363	337 904	319 776	442 511	310 936	323 714	396 169
Bad debts	1 504 410	1 470 467	1 409 664	1 757 111	1 879 306	1 772 594	2 444 659	3 079 360
Contracted services	536 383	838 998	809 642	858 438	1 022 919	1 145 635	1 430 584	1 329 242
Repairs and maintenance	460 061	491 664	560 842	542 663	574 434	602 767	560 179	572 373
Purchases of water	675 546	671 913	808 631	1 060 252	1 000 413	1 284 729	1 583 012	1 510 533
Purchases of electricity	2 294 763	2 705 069	2 776 705	3 145 247	3 481 629	3 223 362	4 289 669	3 905 081
Northern Cape								
Employee related costs	1 524 825	1 699 942	1 833 159	2 121 402	2 167 910	2 419 402	2 560 583	2 642 902
Remuneration of councillors	113 108	120 466	127 909	135 121	142 653	163 144	170 465	174 521
Interest paid	81 264	93 975	110 058	143 021	192 285	222 661	302 400	291 649
Bad debts	291 905	359 702	859 599	801 059	447 463	212 249	379 805	319 571
Contracted services	76 629	96 137	125 900	164 523	236 229	329 495	275 947	167 546
Repairs and maintenance	204 141	250 800	278 398	263 412	219 720	252 728	229 332	206 090
Purchases of water	133 499	154 962	169 833	228 583	239 692	244 956	283 506	310 364
Purchases of electricity	880 187	977 576	1 019 343	1 196 687	1 242 804	1 283 780	1 380 377	1 543 539

18.2 Expenditure incurred by municipalities, by province, 2013-2020 updated (R thousands) (concl.)

	2013	2014	2015	2016	2017	2018	2019	2020
Western Cape								
Employee related costs	10 994 499	12 542 301	12 370 625	13 952 463	14 678 081	16 438 809	18 363 370	19 247 944
Remuneration of councillors	298 433	324 155	343 737	360 384	382 679	417 414	434 656	526 251
Interest paid	1 066 361	1 186 355	1 178 870	1 205 585	1 207 447	1 302 738	1 306 718	1 396 285
Bad debts	1 200 662	1 990 821	2 136 579	2 789 662	2 350 523	2 459 031	2 442 684	3 655 534
Contracted services	3 283 996	3 989 857	4 332 014	4 801 804	5 895 632	3 755 709	4 066 888	4 290 806
Repairs and maintenance	1 261 655	1 200 531	722 074	678 989	459 036	328 616	118 649	63 732
Purchases of water	453 433	478 213	596 459	625 255	521 076	360 477	494 985	693 361
Purchases of electricity	8 844 517	9 202 188	9 870 756	11 293 642	12 013 568	11 809 145	12 532 000	14 184 055
South Africa								
Employee related costs	61 233 721	68 627 048	73 399 718	82 002 005	88 265 651	96 607 117	106 880 933	116 911 202
Remuneration of councillors	2 838 086	3 088 960	3 306 116	3 504 765	3 582 214	4 006 049	4 208 637	4 914 586
Interest paid	6 284 689	6 721 277	7 716 505	8 570 420	9 806 840	10 466 793	11 643 441	12 300 201
Bad debts	14 639 362	17 131 187	21 734 058	21 048 228	23 654 381	23 988 703	29 559 793	39 370 018
Contracted services	10 893 579	12 648 055	17 114 298	19 170 805	25 955 720	26 591 764	29 444 111	29 898 891
Repairs and maintenance	11 123 228	12 080 203	13 031 628	13 908 342	8 488 026	8 014 151	7 218 867	6 669 654
Purchases of water	12 250 374	13 823 299	15 427 106	17 408 042	17 936 082	20 381 191	24 563 628	25 960 303
Purchases of electricity	55 278 853	58 512 623	62 129 291	70 054 108	75 567 848	74 203 312	79 730 652	88 028 521

Source: Stats SA, *Financial census of municipalities* (Statistical release P9114)

Figures are for the years ended 30 June.

18.3 Revenue generated by municipalities, by province, 2013-2020 updated (R thousands)

	2013	2014	2015	2016	2017	2018	2019	2020
Eastern Cape								
Property rates received	2 377 451	2 704 441	3 058 905	3 428 763	3 561 937	4 117 739	4 705 565	5 326 358
Sales of water	1 191 963	1 323 944	1 623 586	2 038 893	2 021 197	2 334 318	2 578 601	3 069 469
Sales of electricity	5 272 462	5 521 662	5 888 197	6 604 195	6 754 786	6 688 059	7 133 956	7 332 317
Refuse removal charges	504 903	584 335	632 937	696 028	627 322	713 156	839 707	959 364
Sewerage and sanitation charges	733 919	767 906	890 521	959 715	951 873	1 077 023	1 238 388	1 395 316
Interest received	707 147	812 935	829 102	965 735	1 065 090	1 116 151	1 379 648	1 499 553
Fines	49 563	93 805	76 700	271 742	345 179	328 412	349 442	317 135
Licences and permits	93 785	95 934	92 280	93 678	108 267	113 670	111 189	88 724
Grants and subsidies received	11 975 755	13 423 186	14 069 337	14 859 909	15 354 981	16 700 698	17 333 977	17 239 255
Free State								
Property rates received	1 283 128	1 836 630	1 713 425	1 914 951	2 132 484	2 396 513	2 488 989	2 749 103
Sales of water	1 308 483	1 463 832	1 711 567	1 764 681	1 966 997	1 995 871	2 194 740	2 351 872
Sales of electricity	3 243 554	3 390 016	3 757 606	3 861 686	4 157 017	4 213 222	4 365 495	4 780 109
Refuse removal charges	354 269	471 122	409 535	433 590	482 510	541 045	554 219	603 756
Sewerage and sanitation charges	521 744	679 154	610 587	661 161	722 850	828 237	873 153	928 448
Interest received	484 804	542 002	608 523	670 358	826 469	808 791	962 941	1 006 552
Fines	23 712	107 732	155 736	134 804	125 081	94 091	126 295	49 405
Licences and permits	683	56 777	512	1 097	335	385	312	402
Grants and subsidies received	5 492 996	5 857 525	5 755 333	5 885 442	5 991 068	5 926 594	6 383 518	6 198 579

18.3 Revenue generated by municipalities, by province, 2013-2020 updated (R thousands) (cont.)

	2013	2014	2015	2016	2017	2018	2019	2020
Gauteng								
Property rates received	15 254 866	17 478 389	19 140 785	20 450 032	20 016 776	23 474 994	27 468 049	28 357 011
Sales of water	9 806 442	10 662 963	11 492 619	13 384 387	13 627 190	15 473 339	18 206 251	19 017 587
Sales of electricity	33 530 474	34 442 235	35 936 261	39 512 164	42 513 487	40 859 695	43 662 870	46 718 120
Refuse removal charges	2 775 115	3 261 006	3 573 871	3 798 343	4 330 141	4 581 571	5 109 414	4 987 527
Sewerage and sanitation charges	3 635 019	4 290 403	4 661 770	5 207 104	5 773 720	6 542 099	7 595 1370	8 821 774
Interest received	1 580 945	1 808 281	2 020 854	2 610 929	2 530 047	2 835 371	3 319 401	2 914 916
Fines	622 089	1 723 593	1 363 661	1 218 743	1 015 298	1 335 003	2 031 746	2 493 760
Licences and permits	185 728	162 468	172 947	174 745	118 836	128 811	112 273	85 261
Grants and subsidies received	18 955 529	20 808 123	23 004 805	24 633 734	25 413 037	26 827 296	28 576 798	29 354 259
KwaZulu-Natal								
Property rates received	7 583 971	8 154 279	9 053 924	9 903 171	10 442 235	11 957 104	13 321 459	14 159 614
Sales of water	3 394 747	3 776 675	4 141 637	4 350 812	4 731 073	5 265 636	6 110 351	6 987 122
Sales of electricity	13 660 816	14 459 893	15 414 291	17 051 923	18 171 304	18 321 509	18 783 457	20 065 808
Refuse removal charges	854 007	896 981	982 064	1 049 592	1 075 446	1 231 763	1 347 325	1 373 921
Sewerage and sanitation charges	1 119 167	1 182 223	1 325 494	1 344 601	1 278 509	1 513 514	1 514 804	1 595 706
Interest received	949 342	996 615	1 131 594	1 477 546	1 586 997	1 837 332	1 859 263	1 803 357
Fines	336 951	589 116	630 057	949 055	712 523	625 894	393 882	363 232
Licences and permits	124 610	125 002	127 496	132 968	137 520	144 308	149 921	118 152
Grants and subsidies received	15 201 073	17 226 970	17 937 314	20 372 413	19 613 583	20 200 022	20 777 639	22 448 335

18.3 Revenue generated by municipalities, by province, 2013-2020 updated (R thousands) (cont.)

	2013	2014	2015	2016	2017	2018	2019	2020
Limpopo								
Property rates received	876 657	1 014 475	1 047 051	1 138 825	1 264 451	1 450 976	1 667 706	1 970 269
Sales of water	612 533	597 677	664 727	807 504	751 495	911 721	975 318	1 149 715
Sales of electricity	1 920 272	1 981 649	2 135 122	2 437 873	2 513 487	2 642 482	2 767 320	3 132 098
Refuse removal charges	205 416	201 912	252 745	270 718	277 655	314 807	308 369	325 638
Sewerage and sanitation charges	125 989	139 656	153 073	176 852	172 701	217 997	252 508	296 800
Interest received	371 212	444 853	494 545	651 393	613 910	660 534	643 992	740 745
Fines	41 061	108 901	114 075	117 124	159 209	208 912	155 009	117 802
Licences and permits	92 139	94 864	96 513	95 581	118 458	106 668	86 945	74 900
Grants and subsidies received	7 907 342	8 866 586	9 451 528	11 246 766	11 487 517	12 657 869	13 533 594	14 241 384
Mpumalanga								
Property rates received	1 478 950	1 520 734	2 126 643	2 278 798	2 424 889	2 671 305	3 051 016	3 128 897
Sales of water	800 670	949 980	1 038 460	1 219 056	1 318 798	1 447 727	1 537 734	1 722 897
Sales of electricity	2 689 874	3 006 033	3 177 169	3 540 785	3 752 217	3 800 903	4 069 987	4 348 414
Refuse removal charges	352 719	409 133	449 746	466 953	502 982	533 694	598 078	629 928
Sewerage and sanitation charges	310 419	363 192	402 664	421 527	452 896	527 266	504 347	555 127
Interest received	361 861	411 967	406 790	652 670	777 215	933 816	1 159 538	1 230 025
Fines	57 018	105 112	165 227	198 810	149 204	171 277	477 222	333 884
Licences and permits	66 982	37 669	40 522	38 694	27 441	26 401	32 913	31 935
Grants and subsidies received	5 115 324	5 875 025	6 446 707	7 363 420	7 556 471	7 949 536	8 527 272	9 054 885

18.3 Revenue generated by municipalities, by province, 2013-2020 updated (R thousands) (cont.)

	2013	2014	2015	2016	2017	2018	2019	2020
North West								
Property rates received	1 078 197	1 101 263	1 485 152	1 636 600	1 693 006	1 868 292	2 021 556	2 285 467
Sales of water	1 066 937	1 043 988	1 259 949	1 326 103	1 552 122	1 617 783	1 873 109	2 024 708
Sales of electricity	2 848 232	3 422 225	3 465 487	3 927 282	4 277 410	4 378 562	4 618 522	4 548 129
Refuse removal charges	271 201	324 803	393 366	454 572	484 473	497 128	512 655	575 939
Sewerage and sanitation charges	293 514	314 816	352 107	420 918	482 831	487 564	531 605	534 443
Interest received	485 744	473 037	587 994	713 547	685 665	791 471	1 230 722	1 488 935
Fines	58 864	168 131	190 799	256 279	167 825	181 918	234 338	97 462
Licences and permits	62 288	58 944	62 769	61 012	54 057	59 098	71 041	43 118
Grants and subsidies received	5 399 413	6 238 213	6 301 549	6 806 678	7 017 747	7 677 135	8 254 023	8 492 680
Northern Cape								
Property rates received	623 262	739 662	1 202 064	1 300 985	1 362 209	1 037 107	1 166 062	1 334 034
Sales of water	471 537	508 517	550 541	586 171	597 302	561 651	641 721	667 213
Sales of electricity	1 288 170	1 320 770	1 439 553	1 605 998	1 587 715	1 600 212	1 669 264	1 908 699
Refuse removal charges	155 927	180 111	190 557	209 284	220 975	204 089	250 881	290 685
Sewerage and sanitation charges	185 473	198 122	229 626	256 887	291 025	261 905	288 911	305 046
Interest received	133 901	168 147	194 480	251 689	304 411	335 535	360 169	369 978
Fines	44 952	85 457	109 853	64 057	86 730	102 416	124 697	96 678
Licences and permits	17 355	18 639	21 058	15 327	21 617	25 364	19 295	20 562
Grants and subsidies received	2 214 855	2 250 385	2 331 373	2 443 147	2 366 464	2 781 471	3 038 784	3 082 251

Source: Stats SA, *Financial census of municipalities* (Statistical release P9114)

18.3 Revenue generated by municipalities, by province, 2013-2020 updated (R thousands) (concl.)

	2013	2014	2015	2016	2017	2018	2019	2020
Western Cape								
Property rates received	7 948 770	8 649 154	9 339 929	10 281 532	11 823 446	11 235 812	13 747 738	14 260 404
Sales of water	3 119 393	3 335 296	3 864 330	4 428 661	4 026 442	4 569 536	4 824 848	4 832 041
Sales of electricity	12 844 967	13 630 368	14 587 526	16 377 674	17 325 581	17 469 293	19 066 723	20 918 191
Refuse removal charges	1 241 832	1 365 391	1 488 516	1 677 563	1 764 644	1 956 248	2 137 660	2 296 708
Sewerage and sanitation charges	1 675 601	1 832 017	2 051 542	2 335 651	2 449 223	2 438 592	2 594 440	2 635 033
Interest received	879 209	953 975	1 131 149	1 349 459	1 629 504	1 818 307	2 136 405	2 319 478
Fines	306 781	1 287 856	1 553 240	1 864 454	2 109 799	2 479 511	2 378 058	2 057 232
Licences and permits	89 071	93 855	95 890	94 404	98 603	99 130	107 472	84 723
Grants and subsidies received	10 264 399	8 037 172	9 218 187	9 517 339	9 427 285	10 097 620	10 861 783	11 348 047
South Africa								
Property rates received	38 505 252	43 199 027	48 167 878	52 333 657	54 721 433	60 209 842	69 638 140	73 571 157
Sales of water	21 772 705	23 662 872	26 347 416	29 906 268	30 592 616	34 177 582	38 942 673	41 822 624
Sales of electricity	77 298 821	81 174 851	85 801 212	94 919 580	101 053 004	99 973 937	106 137 594	113 751 885
Refuse removal charges	6 715 389	7 694 794	8 373 337	9 056 643	9 766 148	10 573 501	11 658 308	12 043 466
Sewerage and sanitation charges	8 600 845	9 767 489	10 677 384	11 784 416	12 575 628	13 894 197	15 393 293	17 067 693
Interest received	5 954 165	6 611 812	7 405 031	9 343 326	10 019 308	11 137 308	13 052 079	13 373 539
Fines	1 540 991	4 269 703	4 359 348	5 075 068	4 870 848	5 527 434	6 270 689	5 926 590
Licences and permits	732 641	744 152	709 987	707 506	685 134	703 835	691 361	547 777
Grants and subsidies received	82 526 686	88 583 185	94 516 133	103 128 848	104 228 153	110 818 241	117 287 388	121 459 675

Source: Stats SA, *Financial census of municipalities* (Statistical release P9114)

ISBN: 978-0-621-50461-3