




Stats in brief 2005



Statistics South Africa
Private Bag X44
Pretoria 0001
South Africa

170 Andries Street
Pretoria 0002

User Information Services:(012) 310 8600
Fax:(012) 310 8500
Printing and Distribution:(012) 310 8044
(012) 310 8161
Fax:(012) 321 7381

Email: distribution@statssa.gov.za
Website: www.statssa.gov.za





Stats in brief, 2005

Pali Lehohla
Statistician-General

Statistics South Africa
2005



**Published by Statistics South Africa
Private Bag X44
Pretoria
0001**

ISBN 0-621-35508-9

© Statistics South Africa, 2005

Data from this publication may be reproduced, applied or processed, provided Statistics South Africa (Stats SA) is acknowledged as the original source of the data; that it is specified that the application and/or analysis is the result of the user's independent processing of the data; and that neither the basic data nor any reprocessed version or application thereof may be sold or offered for sale in any form whatsoever without the prior permission of Stats



Stats in Brief aims to provide users with key statistics about South Africa and draws data from a range of products produced throughout the year by Stats SA.

This edition is based on information collected and published by Stats SA as at the end of June 2005 and no other external sources have been used in this edition as we could not authenticate all other information at the time of publication.

In addition, we have replaced Census 2001 figures with the latest figures on mid-year estimates, Labour force survey (LFS) and General household survey (GHS) figures available at the time of publication. Figures on the causes of death report have been incorporated to be part of Vital statistics.

The feedback we receive from you as users of this booklet is vital in ensuring that we continue to provide appropriate data that meets your expectations. Inside this edition, you'll find a questionnaire that we would like you to fill and forward to us at your earliest convenience but not later than 30 November 2005. We rely on you to ensure that we continue to provide you

with data that not only fulfils your needs, but is also presented in a concise and usable manner.

Abbreviations and symbols

GHS	= General household survey
LFS	= Labour force survey
n/a	= not applicable
n.e.c.	= not elsewhere classified
RDP	= Reconstruction and Development Programme
SA	= South Africa(n)
..	= Data not available
-	= No response from respondents
0 or 0,0	= Figure too small to publish
*	= Revised

Rounding

Figures are rounded off independently of one another; details, therefore, may not add to totals because of rounding.



Population group

For some purposes, Statistics South Africa continues to classify people by population group in order to monitor progress as we move from the apartheid-based discrimination of the past. Although the four groups correspond with the four main groups of the apartheid era, membership of these groups is now based on self-perception and self-classification, not on a legal definition.

Economically active

A person of working age (15-65 years) who is available for work, and is either employed or unemployed.

Not economically active

Persons not in the labour force, such as housewives/homemakers, students and scholars, pensioners and retired people, and any others not seeking work during the reference period.

Official or strict definition of unemployment

Those people within the economically active population who: (a) did not work in the seven days prior to the reference day; (b) wanted to work and were available to start work within two weeks; and (c) had taken active steps to look for work or start some form of self-employment in the previous four weeks.

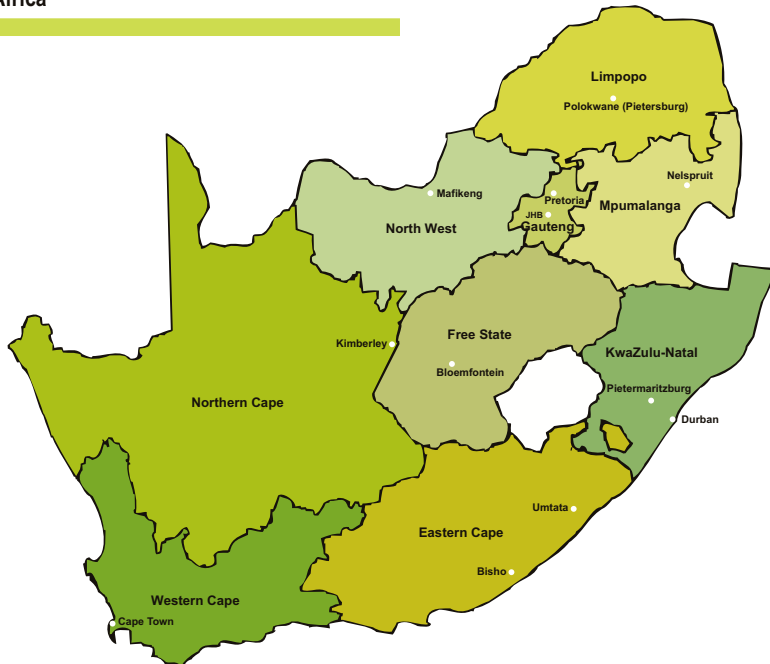




Contents

1.	Geography	1
2.	Demography	15
3.	Vital statistics	13
4.	Tourism	23
5.	Documented migration	31
6.	Labour statistics	35
7.	Prices	51
8.	Mining	59
9.	Manufacturing	63
10.	Construction	69
11.	Energy	73
12.	Transport	77
13.	Financial statistics: Private enterprises operating in the formal non-agriculture business sector	81
14.	Selected internal trade activities	91
15.	Social services and housing	95
16.	Debts	111
17.	National accounts	115
18.	Government finances	121

South Africa



Geography



1

1

- | | | | | |
|-----|--|--|--|---|
| 1.1 | | Area of each province in square kilometres | | 3 |
| 1.2 | | Area by province in South Africa (percentages) | | 4 |

1.1 Area of each province in square kilometres

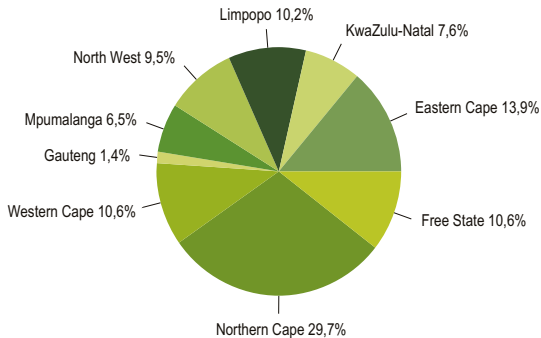
Eastern Cape	Free State	Gauteng	KwaZulu-Natal	Limpopo	Mpumalanga	Northern Cape	North West	Western Cape	South Africa
200 893	148 117	18 939	105 406	134 520	88 529	417 345	129 876	154 463	1 398 088

Source: Stats SA, Geography Division: Enumeration Areas, Projection Albers Equal Area, Datum 1886, ArcView 3.2

Northern Cape, the largest province, covers 29,7% of the total land area of South Africa, while Gauteng, the smallest province, comprises only 1,4% of the total area.



1.2 Area by province in South Africa (percentages)



Source: Stats SA, Geography Division



2

Demography



2

2.1	Mid-year population estimates of South Africa by population group, age and gender, 2005 (hundreds)	7
2.2	Provincial mid-year population estimates of South Africa by age and gender, 2005 (hundreds)	8
2.3	Mid-year population estimates of South Africa by population group and gender, 2005	10
2.4	Percentage distribution of the projected provincial share of the total South African population, 2001-2005	10
2.5	Estimated annual population growth rates of South Africa, 2001-2005	11

2.1 Mid-year population estimates of South Africa by population group, age and gender, 2005 (hundreds)

	Black African			Coloured			Indian or Asian			White			Total		
	Male	Female	Total	Male	Female	Total	Male	Female	Total	Male	Female	Total	Male	Female	Total
0-4	21 842	21 625	43 467	2 038	2 000	4 038	443	433	876	1 144	1 114	2 258	25 467	25 172	50 639
5-9	21 361	21 248	42 609	2 041	2 009	4 050	485	477	962	1 362	1 328	2 690	25 249	25 062	50 311
10-14	21 372	21 349	42 721	2 023	2 003	4 026	523	519	1 042	1 622	1 582	3 204	25 540	25 453	50 993
15-19	20 396	20 400	40 796	1 909	1 905	3 814	537	539	1 076	1 667	1 628	3 295	24 509	24 472	48 981
20-24	19 385	18 920	38 305	1 874	1 876	3 750	540	539	1 079	1 547	1 531	3 078	23 346	22 866	46 212
25-29	17 802	16 966	34 768	1 924	1 927	3 851	497	501	998	1 260	1 234	2 494	21 483	20 628	42 111
30-34	15 385	15 227	30 612	1 877	1 909	3 786	439	447	886	1 181	1 155	2 336	18 882	18 738	37 620
35-39	10 091	10 563	20 654	1 552	1 624	3 176	410	421	831	1 586	1 555	3 141	13 639	14 163	27 802
40-44	8 445	9 374	17 819	1 346	1 438	2 784	379	397	776	1 724	1 729	3 453	11 894	12 938	24 832
45-49	7 128	8 222	15 350	1 090	1 186	2 276	342	363	705	1 737	1 804	3 541	10 297	11 575	21 872
50-54	5 527	6 512	12 039	820	915	1 735	300	328	628	1 557	1 612	3 169	8 204	9 367	17 571
55-59	4 220	5 164	9 384	594	698	1 292	244	278	522	1 457	1 567	3 024	6 515	7 707	14 222
60-64	3 786	4 534	8 320	479	552	1 031	199	227	426	1 291	1 374	2 665	5 755	6 687	12 442
65-69	2 821	3 582	6 403	359	449	808	142	173	315	958	1 075	2 033	4 280	5 279	9 559
70-74	1 868	2 498	4 366	232	313	545	88	116	204	633	797	1 430	2 821	3 724	6 545
70-79	1 048	1 476	2 524	123	177	300	49	73	122	399	578	977	1 619	2 304	3 923
80+	727	1 193	1 920	86	140	226	34	57	91	356	654	1 010	1 203	2 044	3 247
Total	183 204	188 853	372 057	20 367	21 121	41 488	5 651	5 888	11 539	21 481	22 317	43 798	230 703	238 179	468 882

Source: Stats SA, *Mid-year population estimates, South Africa, 2005* (Statistical release P0302)

2.2 Provincial mid-year population estimates of South Africa by age and gender, 2005 (hundreds)

	Eastern Cape			Free State			Gauteng			KwaZulu-Natal			Limpopo		
	Male	Female	Total	Male	Female	Total	Male	Female	Total	Male	Female	Total	Male	Female	Total
0-4	3 894	3 860	7 754	1 490	1 476	2 966	4 507	4 424	8 931	5 475	5 421	10 896	3 374	3 350	6 724
5-9	4 077	4 009	8 086	1 521	1 509	3 030	3 860	3 835	7 695	5 585	5 540	11 125	3 554	3 562	7 116
10-14	4 601	4 548	9 149	1 550	1 538	3 088	3 429	3 424	6 853	5 702	5 672	11 374	3 850	3 862	7 712
15-19	4 354	4 301	8 655	1 565	1 540	3 105	3 433	3 470	6 903	5 381	5 362	10 743	3 589	3 582	7 171
20-24	3 424	3 421	6 845	1 474	1 435	2 909	4 588	4 224	8 812	4 983	4 964	9 947	2 772	2 879	5 651
25-29	2 525	2 618	5 143	1 299	1 284	2 583	5 583	4 697	10 280	4 276	4 257	8 533	2 012	2 318	4 330
30-34	2 007	2 288	4 295	1 157	1 193	2 350	5 290	4 411	9 701	3 591	3 738	7 329	1 549	2 005	3 554
35-39	1 461	1 814	3 275	900	945	1 845	3 712	3 224	6 936	2 428	2 744	5 172	1 096	1 475	2 571
40-44	1 343	1 771	3 114	810	858	1 668	3 091	2 847	5 938	2 086	2 528	4 614	950	1 355	2 305
45-49	1 266	1 726	2 992	714	765	1 479	2 592	2 513	5 105	1 784	2 223	4 007	817	1 182	1 999
50-54	1 063	1 426	2 489	579	636	1 215	1 958	1 954	3 912	1 469	1 808	3 277	689	994	1 683
55-59	881	1 199	2 080	454	521	975	1 476	1 527	3 003	1 218	1 564	2 782	569	810	1 379
60-64	857	1 138	1 995	397	441	838	1 208	1 236	2 444	1 051	1 337	2 388	521	710	1 231
65-69	757	1 077	1 834	281	331	612	790	823	1 613	761	1 050	1 811	426	642	1 068
70-74	545	757	1 302	189	244	433	470	530	1 000	479	731	1 210	301	522	823
70-79	316	455	771	99	133	232	254	315	569	277	466	743	199	355	554
80+	227	387	614	73	130	203	190	295	485	195	365	560	164	315	479
Total	33 598	36 795	70 393	14 552	14 979	29 531	46 431	43 749	90 180	46 741	49 770	96 511	26 432	29 918	56 350



2.2 Provincial mid-year population estimates of South Africa by age and gender, 2005 (hundreds) (concluded)

	Mpumalanga			Northern Cape			North West			Western Cape			South Africa		
	Male	Female	Total	Male	Female	Total	Male	Female	Total	Male	Female	Total	Male	Female	Total
0-4	1 852	1 838	3 690	476	469	945	2 119	2 106	4 225	2 281	2 228	4 509	25 468	25 172	50 640
5-9	1 908	1 917	3 825	485	480	965	2 023	2 024	4 047	2 236	2 186	4 422	25 249	25 062	50 311
10-14	1 866	1 883	3 749	457	457	914	1 998	1 996	3 994	2 087	2 073	4 160	25 540	25 453	50 993
15-19	1 785	1 777	3 562	429	427	856	1 910	1 913	3 823	2 063	2 099	4 162	24 509	24 471	48 980
20-24	1 634	1 594	3 228	405	379	784	1 804	1 726	3 530	2 260	2 244	4 504	23 344	22 866	46 210
25-29	1 421	1 394	2 815	383	352	735	1 747	1 585	3 332	2 238	2 123	4 361	21 484	20 628	42 112
30-34	1 228	1 272	2 500	359	339	698	1 598	1 488	3 086	2 105	2 004	4 109	18 884	18 738	37 622
35-39	888	946	1 834	284	280	564	1 256	1 135	2 391	1 613	1 602	3 215	13 638	14 165	27 803
40-44	790	838	1 628	253	259	512	1 161	1 027	2 188	1 410	1 456	2 866	11 894	12 939	24 833
45-49	672	705	1 377	230	244	474	1 027	914	1 941	1 194	1 303	2 497	10 296	11 575	21 871
50-54	539	573	1 112	194	208	402	771	737	1 508	942	1 030	1 972	8 204	9 366	17 570
55-59	404	445	849	157	175	332	588	596	1 184	767	870	1 637	6 514	7 707	14 221
60-64	343	371	714	147	157	304	536	546	1 082	697	751	1 448	5 757	6 687	12 444
65-69	245	296	541	110	114	224	377	401	778	531	544	1 075	4 278	5 278	9 556
70-74	152	202	354	75	80	155	250	283	533	360	374	734	2 821	3 723	6 544
70-79	96	132	228	39	45	84	142	173	315	197	229	426	1 619	2 303	3 922
80+	78	115	193	30	45	75	108	174	282	139	220	359	1 204	2 046	3 250
Total	15 901	16 298	32 199	4 513	4 510	9 023	19 415	18 824	38 239	23 120	23 336	46 456	230 703	238 179	468 882

Source: Stats SA, *Mid-year population estimates, South Africa, 2005* (Statistical release P0302)

2.3 Mid-year population estimates of South Africa by population group and gender, 2005

	Male		Female		Total	
	Number	% of total population	Number	% of total population	Number	% of total population
Black African	183 204	79,4	188 853	79,3	372 057	79,3
Coloured	20 367	8,8	21 121	8,9	41 488	8,8
Indian or Asian	5 651	2,4	5 888	2,5	11 539	2,5
White	21 481	9,3	22 317	9,4	43 798	9,3
Total	230 703	100,0	238 179	100,0	468 882	100,0

Source: Stats SA, *Mid-year population estimates, South Africa, 2005* (Statistical release P0302)

2.4 Percentage distribution of the projected provincial share of the total South African population, 2001-2005

Province	2001	2002	2003	2004	2005
Eastern Cape	15,5	15,4	15,3	15,1	15,0
Free State	6,5	6,4	6,4	6,3	6,3
Gauteng	18,5	18,7	18,9	19,0	19,2
KwaZulu-Natal	20,7	20,7	20,7	20,6	20,6
Limpopo	12,3	12,2	12,1	12,1	12,0
Mpumalanga	6,9	6,9	6,9	6,9	6,9
Northern Cape	1,9	1,9	1,9	1,9	1,9
North West	8,2	8,2	8,2	8,2	8,2
Western Cape	9,4	9,5	9,7	9,8	9,9
Total	100,0	100,0	100,0	100,0	100,0

Source: Stats SA, *Mid-year population estimates, South Africa, 2005* (Statistical release P0302)



2.5 Estimated annual population growth rates of South Africa, 2001-2005

		2001-2002	2002-2003	2003-2004	2004-2005
Black African	Male	1,39	1,29	1,21	1,11
	Female	1,38	1,26	1,15	1,03
	Total	1,38	1,28	1,18	1,07
Coloured	Male	1,25	1,17	1,09	1,01
	Female	1,26	1,18	1,10	1,02
	Total	1,25	1,18	1,09	1,01
Indian or Asian	Male	0,84	0,80	0,77	0,77
	Female	0,91	0,87	0,83	0,82
	Total	0,88	0,83	0,80	0,80
White	Male	-1,32	-1,09	-0,84	-0,49
	Female	-1,15	-0,92	-0,67	-0,33
	Total	-1,23	-1,01	-0,75	-0,41
Total	Male	1,10	1,04	0,99	0,94
	Female	1,10	1,03	0,96	0,90
	Total	1,10	1,03	0,98	0,92

Source: Stats SA, *Mid-year population estimates, South Africa, 2005* (Statistical release P0302)





Scroll down

Vital statistics

3



3

3.1	Recorded marriages by province, 1998-2002 (numbers)	15
3.2	Recorded divorces by province, 1998-2002 (numbers)	16
3.3	Number of minor children involved in recorded divorces by population group, 1998-2002	17
3.4	Registered live births by province, 1999-2003 (thousands)	18
3.5	Number of deaths by province and year of death, 1997-2002	19
3.6	Percentage distribution of registered deaths by age, 1997-2003	20
3.7	Main groups of the underlying causes of death, 1997-2003	21
3.8	Leading underlying natural causes of death, 1997-2003	22

3.1 Recorded marriages by province, 1998-2002 (numbers)

Year	Eastern Cape	Free State	Gauteng	KwaZulu- Natal	Limpopo	Mpuma- langa	Northern Cape	North West	Western Cape	Unspeci- fied	Foreign	South Africa
1998	15 815	12 133	37 776	20 267	13 031	7 149	3 686	10 648	24 086	2 033	117	146 741
1999	18 676	12 732	36 000	12 991	14 707	7 524	3 201	9 615	21 951	2 990	71	140 458
2000	13 180	11 591	37 036	20 327	10 373	8 316	3 356	10 359	23 524	5 205	124	143 391
2001	12 908	10 790	35 528	19 646	12 003	7 995	3 283	9 377	22 767	3 138	60	134 581
2002	19 278	13 359	45 400	24 272	14 970	10 139	3 790	13 483	26 852	5 214	245	177 002

Source: Stats SA, *Marriages and divorces* (Report 03-07-01)

Recorded marriages of all population groups are included. Certain types of marriages, for example, traditional and Muslim, were not officially recognised until 1999. These types of marriages are thus reflected in the figures from 2000 onwards.



3.2 Recorded divorces by province, 1998-2002 (numbers)

Year	Eastern Cape	Free State	Gauteng	KwaZulu-Natal	Limpopo	Mpumalanga	Northern Cape	North West	Western Cape	Unspecified	Foreign	South Africa
1998	1 918	2 071	10 393	4 430	829	1 204	475	1 207	4 014	457	0	35 762
1999	3 317	1 929	14 005	4 741	1 027	1 132	843	1 574	7 143	1 580	15	37 098
2000	2 519	1 737	13 289	4 664	918	961	667	1 728	5 596	2 064	0	34 145
2001	2 733	1 661	12 545	4 796	1 035	1 221	611	1 815	5 840	2 787	13	32 257
2002	1 761	1 063	11 666	3 515	1 149	1 255	536	2 065	5 846	1 968	14	30 838

Source: Stats SA, *Marriages and divorces* (Report 03-07-01)

All population groups are included.



3.3 Number of minor children involved in recorded divorces by population group, 1998-2002

Year	Black African	Coloured	Indian or Asian	White	Mixed	Unspecified	Total
1998	8 969	6 027	2 620	15 848	276	11 383	45 123
1999	9 134	5 946	2 805	15 579	353	11 513	45 330
2000	9 627	4 589	2 237	15 500	416	6 464	38 833
2001	9 640	5 377	1 951	14 854	420	5 561	37 803
2002	8 578	4 868	1 794	14 031	342	4 787	34 400

Source: Stats SA, *Marriages and divorces* (Report 03-07-01)

Figures include minor children of all population groups as recorded in the law courts. The age of a minor child is defined as 0-16 years.



3.4 Registered live births by province, 1999-2003 (thousands)

Year	Eastern Cape	Free State	Gauteng	KwaZulu-Natal	Limpopo	Mpumalanga	Northern Cape	North West	Western Cape	Foreign	Unspecified	South Africa
1999	204	63	185	312	269	97	18	112	81	23	-	1 364
2000	219	70	192	348	217	108	19	122	98	15	-	1 408
2001	246	69	203	395	178	107	19	102	103	11	-	1 433
2002	288	66	204	395	215	114	21	105	102	8	-	1 518
2003	337	100	219	401	230	139	24	125	95	7	84	1 677

Source: Stats SA, *Recorded live births* (Statistical release P0305)

The total number of birth registrations for any given year comprises both current registrations (for births registered in the year of birth) and late registrations (for births registered later than the year of birth). Many births are not registered in the year in which they occur; instead the pattern is to register some births only before school-going age, although this is improving.



3.5 Number of deaths by province and year of death, 1997-2002

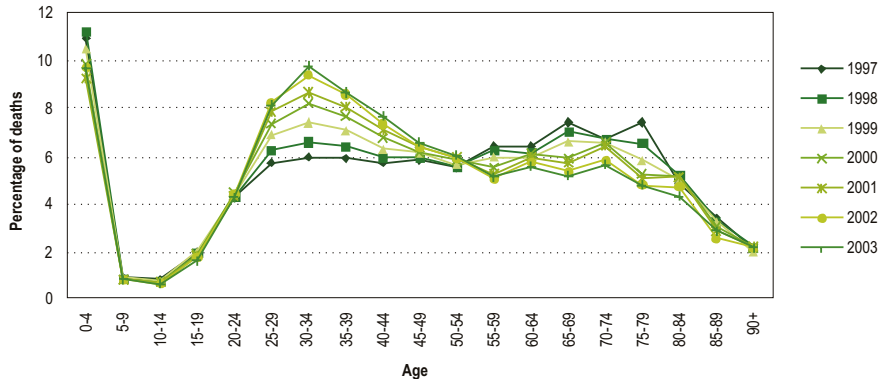
	1997	1998	1999	2000	2001	2002
Eastern Cape	45 345	50 918	53 851	60 602	65 719	73 072
Free State	25 375	30 142	31 625	34 101	36 877	40 715
Gauteng	67 734	75 993	75 445	80 425	86 213	95 186
KwaZulu-Natal	70 487	83 048	86 156	95 353	105 256	116 982
Limpopo	22 338	28 302	29 135	31 263	34 901	38 639
Mpumalanga	20 122	23 926	25 899	28 273	31 548	35 277
Northern Cape	8 495	9 441	9 187	9 847	10 421	11 267
North West	25 026	29 458	32 395	35 437	39 723	44 269
Western Cape	33 292	36 347	38 088	38 540	41 042	43 667
Outside SA	73	112	120	128	234	193
Unspecified	-	2	1	-	2	1
South Africa	318 287	367 689	381 902	413 969	451 936	499 268

Source: Stats SA, *Mortality and causes of death in South Africa, 1997-2003: Findings from death notification* (Statistical release P0309.3)

The completeness of the death register varies by year and province of death. The death register is more complete for 2002 than for 1997. Numbers for 2003 are excluded as Stats SA has not yet received all the death notification forms for 2003 from the Department of Home Affairs. Deaths are reported for the province in which the death took place, not for the usual province of residence.



3.6 Percentage distribution of registered deaths by age and year of death, 1997-2003



Source: Stats SA, *Mortality and causes of death in South Africa, 1997-2003: Findings from death notification* (Statistical release P0309.3)

Percentages refer to number of deaths in each age group expressed in terms of the total number of deaths for that year.

3.7 Main groups of the underlying causes of death, 1997-2003

Main causes of death (Based on the <i>Tenth Revision, International Classification of Disease, 1992</i>)	1997	1998	1999	2000	2001	2002	2003
	%	%	%	%	%	%	%
Diseases of the circulatory system (I00-I99)	18,5	17,6	17,3	17,0	16,1	15,3	15,1
External causes of morbidity and mortality (V01-Y98)	17,0	15,0	13,9	12,0	11,1	10,2	9,2
Certain infectious diseases & parasitic diseases (A00-B99)	12,5	14,0	16,8	18,9	19,9	21,5	22,0
Symptoms, signs etc. n.e.c. (R00-R99)	13,5	14,2	12,4	12,3	12,4	12,6	12,5
Diseases of the respiratory system (J00-J99)	8,7	10,0	10,1	10,9	12,3	12,6	13,6
Neoplasms (C00-D48)	8,8	8,0	8,0	7,4	6,9	6,5	6,2
Certain conditions originating in the perinatal period (P00-P99)	6,7	6,7	6,2	5,6	5,2	5,7	5,7
Endocrine, nutritional and metabolic diseases (E00-E90)	4,8	4,8	4,7	4,7	4,6	4,5	4,4
Diseases of the digestive system (K00-K93)	2,8	2,7	2,7	2,8	2,9	2,7	2,7
Diseases of the blood & immune mechanism (D50-D89)	1,5	2,1	2,8	3,2	3,2	3,2	3,3
Diseases of the nervous system (G00-G99)	1,9	2,0	2,1	2,3	2,3	2,3	2,5
Diseases of the genito-urinary system (N00-N99)	1,4	1,4	1,3	1,4	1,4	1,4	1,4
Congenital malformations (Q00-Q99)	0,6	0,5	0,4	0,4	0,4	0,4	0,3
Mental and behavioural diseases (F00-F99)	0,5	0,4	0,4	0,4	0,4	0,4	0,4
Diseases of the eye and adnexa (H00-H59)	0,0	0,0	0,0	0,0	0,0	0,0	0,0
Diseases of the ear and mastoid process (H60-H95)	0,0	0,0	0,0	0,0	0,0	0,0	0,0
Diseases of the musculoskeletal system etc. (M00-M99)	0,3	0,3	0,4	0,3	0,4	0,4	0,3
Diseases of the skin and subcutaneous tissue (L00-L99)	0,3	0,2	0,3	0,3	0,3	0,3	0,3
Pregnancy, childbirth and the puerperium (O00-O99)	0,2	0,2	0,2	0,2	0,2	0,2	0,2
Total	100,0	100,0	100,0	100,0	100,0	100,0	100,0
Numbers	318 287	367 689	381 902	413 969	451 936	499 268	454 603

Source: Stats SA, *Mortality and causes of death in South Africa, 1997-2003: Findings from death notification* (Statistical release P0309.3)

Disease of the circulatory system seem to be linked to the highest percentage of deaths in 1997-1999, while the highest percentage of deaths in 2000-2003 were those associated with certain infectious and parasitic diseases. The dominant contributors to the growth in mortality were deaths associated with tuberculosis, other forms of heart disease, cerebrovascular diseases and influenza and pneumonia.



3.8 Leading underlying natural causes of death, 1997-2003

Causes of death (Based on the <i>Tenth Revision, International Classification of Disease, 1992</i>)	1997	1998	1999	2000	2001	2002	2003
	%	%	%	%	%	%	%
Tuberculosis (A15-A19)	6,9	7,7	8,9	10,2	11,3	12,0	12,1
Other forms of heart disease (I30-I52)	6,3	5,9	5,3	5,2	5,0	4,5	4,4
Cerebrovascular diseases (I60-I69)	5,3	5,1	5,2	5,3	5,0	5,0	5,0
Influenza and pneumonia (J10-J18)	3,6	4,6	5,0	5,9	7,0	7,5	8,3
Diabetes mellitus (E10-E14)	3,4	3,3	3,3	3,3	3,2	3,1	3,1
Chronic lower respiratory diseases (J40-J47)	3,4	3,6	3,3	3,2	3,2	3,0	3,0
Ischaemic heart diseases (I20-I25)	3,1	2,9	3,0	2,8	2,6	2,5	2,5
Malignant neoplasms of digestive organs (C15-C26)	2,8	2,5	2,5	2,2	2,1	1,9	1,7
Hypertensive diseases (I10-I15)	2,4	2,4	2,5	2,5	2,4	2,2	2,2
Respiratory and cardiovascular disorders - perinatal (P20-P29)	2,2	2,2	2,1	2,2	2,1	2,3	2,3
Intestinal infectious diseases (A00-A09)	2,0	2,4	2,9	3,4	3,6	4,0	4,4
Human immunodeficiency virus [HIV] diseases (B20-B24)	2,0	2,0	2,6	2,5	2,0	2,1	2,1
Certain disorders involving the immune mechanism (D80-D89)	1,0	1,5	2,2	2,6	2,6	2,5	2,7
Other causes	55,5	53,8	51,2	48,7	48,0	47,4	46,3
Total	100,0	100,0	100,0	100,0	100,0	100,0	100,0
Numbers	318 287	367 689	381 902	413 969	451 936	499 268	454 603

Source: Stats SA, *Mortality and causes of death in South Africa, 1997-2003: Findings from death notification* (Statistical release P0309.3)

Causes listed are those that were in the top ten leading causes in any of the leading years, excluding symptoms, signs and abnormal clinical and laboratory findings, not elsewhere classified.

The dominant contributors to the growth in mortality were deaths associated with tuberculosis, other forms of heart disease, cerebrovascular diseases and influenza and pneumonia.



Tourism

4

4

4.1	Arrivals and departures of foreign travellers and SA residents, 1999-2004 (thousands)	25
4.2	Arrivals and departures of foreign travellers, 1999-2004 (thousands)	26
4.3	Arrivals and departures of South African residents, 1999-2003 (thousands)	27
4.4	Arrivals of foreign travellers by mode of travel, 1999 against 2004 (thousands)	28
4.5	Purpose of visit stated by foreign travellers, 1999-2004 (thousands)	29

4.1 Arrivals and departures of foreign travellers and SA residents, 1999-2004 (thousands)

Year	Arrivals ¹			Departures ¹		
	Foreign travellers ²	SA residents ³	Total	Foreign travellers ²	SA residents ³	Total
1999	6 026	3 866	9 892	5 299	3 875	9 174
2000	6 001	3 884	9 885	5 466	3 834	9 300
2001	5 908	3 802	9 710	5 307	3 733	9 040
2002	6 550	3 850	10 400	5 822	3 794	9 616
2003 ⁴	6 640	1 254	7 894	5 955	1 164	7 119
2004	6 815	-	6 815	6 093	-	6 093

Sources: Stats SA, *Tourism 1999-2002* (Report 03-51-02) and *Tourism and migration* (Statistical release P0351)

¹ All people entering or leaving South Africa through legal ports of entry.

² Persons resident outside South Africa, who visit this country temporarily for business, holiday and/or study purposes, as well as for work (more than 90 days).

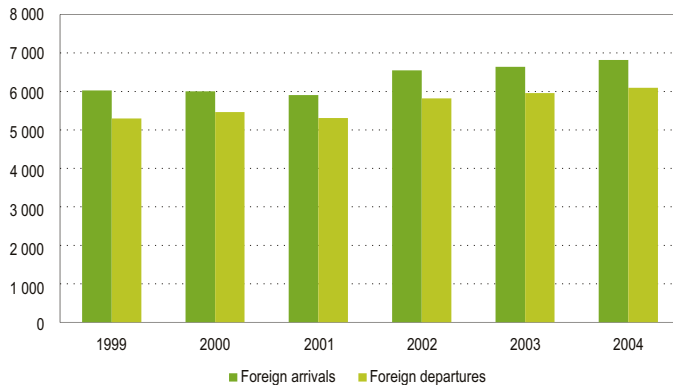
³ South African citizens and persons with permanent residence in South Africa, who leave the country temporarily.

⁴ As from April 2003, statistics have not been collected on arrivals or departures of South African residents in terms of the Immigration Act, 2002 (Act No. 13 of 2002).

About two-thirds of the people coming into the country are foreign travellers and about one-third are South African residents.



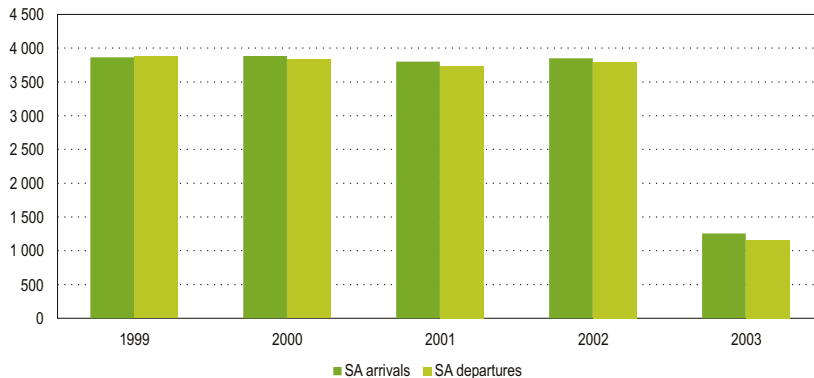
4.2 Arrivals and departures of foreign travellers, 1999-2004 (thousands)



Sources: Stats SA, *Tourism 1999-2002* (Report 03-51-02) and *Tourism and migration* (Statistical release P0351)



4.3 Arrivals and departures of South African residents, 1999-2003 (thousands)

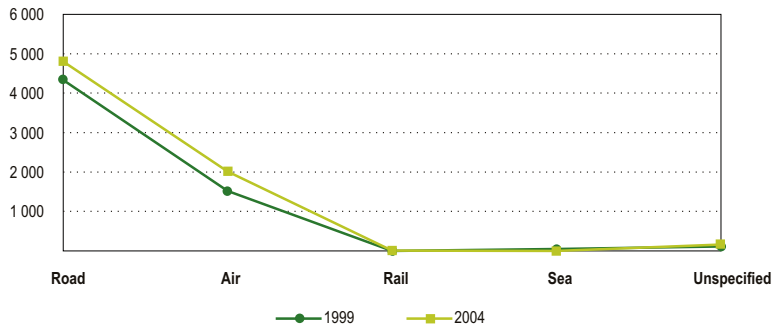


Sources: Stats SA, *Tourism 1999-2002* (Report 03-51-02) and *Tourism and migration* (Statistical release P0351)

As from April 2003, statistics on South African residents were no longer collected due to the Immigration Act, 2002 (Act No. 13 of 2002).



4.4 Arrivals of foreign travellers by mode of travel, 1999 against 2004 (thousands)



Sources: Stats SA, *Tourism 1999-2002* (Report 03-51-02) and *Tourism and migration* (Statistical release P0351)

Foreign visitors entering the country using road and rail transport do so through the South African borders with neighbouring countries - Lesotho, Namibia, Botswana, Zimbabwe, Mozambique and Swaziland.

Ports of entry for air travel are mainly through the international airports at Cape Town, Durban and Johannesburg. Ports of entry for sea travel are mainly Cape Town, Durban, East London and Port Elizabeth.



4.5 Purpose of visit stated by foreign travellers, 1999-2004 (thousands)

Purpose of visit	1999	2000	2001	2002	2003	2004
Holiday	4 991	4 989	4 962	5 596	5 853	6 091
Business	576	572	479	446	283	224
Transit	152	148	130	133	85	63
Border traffic	113	101	136	157	156	168
Work	74	69	62	58	72	83
Contract work	61	59	58	62	63	54
Study	50	57	77	94	123	137
Unspecified	9	6	4	4	5	5
Total	6 026	6 001	5 908	6 550	6 640	6 815

Sources: Stats SA, *Tourism 1999-2002* (Report 03-51-02) and *Tourism and migration* (Statistical release P0351)





Scroll down

Documented migration

5





Documented migration

5

5.1	Documented immigrants and self-declared emigrants by region of previous permanent residence or destination, 1999-2004 (numbers)	33
5.2	Documented immigrants and self-declared emigrants by occupation group, 1999-2004 (numbers)	34

5.1 Documented immigrants and self-declared emigrants by region of previous permanent residence or destination, 1999-2004 (numbers)

	Europe	Australia	Middle East	Asia	North America	Central and South America	Africa	Indian Ocean Islands	Unspecified	Total
Documented immigrants										
1999	1 213	40	46	693	98	33	1 504	28	14	3 669
2000	978	33	50	991	111	22	831	24	13	3 053
2001	1 714	51	109	1 289	172	41	1 419	31	6	4 832
2002	1 847	65	103	1 738	184	60	2 472	61	15	6 545
2003	2 567	99	190	2 328	272	82	4 961	58	21	10 578
2004	2 638	85	149	2 225	269	74	5 235	26	13	10 714
Self-declared emigrants										
1999	3 071	2 506	200	187	1 168	43	1 131	86	95	8 487
2000	3 811	2 441	243	198	1 581	64	1 655	151	118	10 262
2001	5 316	2 912	280	226	1 659	54	1 584	126	103	12 260
2002	4 637	2 523	323	218	1 430	43	1 461	144	111	10 890
2003	6 827	3 248	580	445	1 998	92	2 611	196	168	16 165
2004 ¹	353	117	6	9	89	1	42	15	10	642

Sources: Stats SA, *Documented migration* (Report 03-51-03) and *Tourism and migration* (Statistical release P0351)

¹ As from February 2004, statistics on self-declared emigrants were no longer collected due to the Immigration Act, 2002 (Act No. 13 of 2002).

Emigration in this context refers to South Africans leaving the country permanently. These figures are obtained from South Africa's three international airports, Johannesburg, Cape Town and Durban. The immigration figures are obtained from all legal ports of entry into South Africa. The four most frequent destinations for self-declared emigrants are Europe, North America, Australasia and Africa.

5.2 Documented immigrants and self-declared emigrants by occupation group, 1999-2004 (numbers)

Occupation	1999	2000	2001	2002	2003	2004 ¹
Documented immigrants						
Professional	378	331	524	576	499	436
Managerial and administrative	258	241	258	382	416	484
Clerical and sales occupations	199	21	62	26	15	13
Transport and communications occupations	25	5	3	5	25	5
Service occupations	58	4	16	21	7	19
Farming and related occupations	48	4	-	2	15	2
Artisan and related occupations	169	15	11	14	10	13
Production and related workers	218	5	10	9	-	3
Occupation unspecified and n.e.c.	36	36	69	19	39	83
Not economically active	2 304	2 391	3 879	5 491	9 567	9 368
Total	3 669	3 053	4 832	6 545	10 578	10 714
Self-declared emigrants						
Professional	1 855	2 439	2 929	2 689	4 316	174
Managerial and administrative	680	891	954	1 146	1 729	59
Clerical and sales occupations	794	1 057	1 279	1 119	1 895	80
Transport and communications occupations	32	67	53	54	142	5
Service occupations	116	146	208	129	272	11
Farming and related occupations	16	34	33	25	34	1
Artisan and related occupations	257	289	304	253	366	13
Production and related workers	28	61	79	39	73	1
Occupation unspecified and n.e.c.	970	1 450	1 752	1 880	1 713	64
Not economically active	3 639	3 828	4 669	3 556	5 625	234
Total	8 487	10 262	12 260	10 890	16 165	642

Sources: Stats SA, *Documented migration* (Report 03-51-03) and *Tourism and migration* (Statistical release P0351)

¹ As from February 2004, statistics on self-declared emigrants were no longer collected due to the Immigration Act, 2002 (Act No. 13 of 2002).

Labour statistics

6



6

6.1	Population of working age (15-65 years) by gender and labour market status according to the official definition of unemployment, 2001-2004 (thousands)	37
6.2	Population of working age (15-65 years) by population group and labour market status according to the official definition of unemployment, 2001-2004 (thousands)	40
6.3	The employed (15-65 years) by main occupation and province, 2001-2004 (thousands)	42
6.4	The employed (15-65 years) by main industry and province, 2001-2004 (thousands)	46
6.5	Number of employees and gross salaries and wages according to major industrial groups of manufacturing and construction, 2000-2003	50

Data revisions: Stats SA has revised the population model in the light of mortality data released in February 2005. The benchmarks for the Labour force survey (LFS) of March 2004 have been revised accordingly, so that the data from March 2004 and September 2004 are comparable (Tables 6.1 - 6.4). Re-benchmarking of earlier surveys will be carried out in due course.

6.1 Population of working age (15-65 years) by gender and labour market status according to the official definition of unemployment, 2001-2004 (thousands)

Gender	Total	Not economy- cally active	Economically active			
			Sub- total	Workers	Unem- ployed	Unem- ployment rate %
Male						
Feb '01	12 915	4 510	8 405	6 317	2 088	24,8
Sep '01	12 981	4 792	8 188	6 049	2 139	26,1
Feb '02	13 110	4 647	8 463	6 218	2 245	26,5
Sep '02	13 340	4 897	8 444	6 184	2 259	26,8
Mar '03	14 026	5 112	8 914	6 445	2 469	27,7
Sep '03	14 080	5 457	8 623	6 436	2 187	25,4
Mar '04	14 077	5 356	8 721	6 640	2 081	23,9
Sep '04	14 194	5 394	8 800	6 772	2 029	23,1



6.1 Population of working age (15-65 years) by gender and labour market status according to the official definition of unemployment, 2001-2004 (thousands) (continued)

Gender	Total	Not economy- cally active	Economically active			
			Sub- total	Workers	Unem- ployed	Unem- ployment rate %
Female						
Feb '01	14 201	6 532	7 669	5 519	2 150	28,0
Sep '01	14 384	7 214	7 170	4 783	2 386	33,3
Feb '02	14 561	6 894	7 667	5 174	2 493	32,5
Sep '02	14 634	7 217	7 418	4 841	2 577	34,7
Mar '03	15 525	7 627	7 898	5 118	2 780	35,2
Sep '03	15 837	8 268	7 569	5 187	2 382	31,5
Mar '04	15 045	7 963	7 082	4 752	2 330	32,9
Sep '04	15 097	8 128	6 969	4 866	2 103	30,2



6.1 Population of working age (15-65 years) by gender and labour market status according to the official definition of unemployment, 2001-2004 (thousands) (concluded)

Gender	Total	Not economically active	Economically active			
			Sub-total	Workers	Unemployed	Unemployment rate %
Total						
Feb '01	27 121	11 044	16 077	11 837	4 240	26,4
Sep '01	27 365	12 006	15 358	10 833	4 525	29,5
Feb '02	27 673	11 543	16 130	11 393	4 738	29,4
Sep '02	27 984	12 118	15 866	11 029	4 837	30,5
Mar '03	29 555	12 740	16 815	11 565	5 250	31,2
Sep '03	29 917	13 725	16 192	11 622	4 570	28,2
Mar '04	29 131	13 324	15 807	11 392	4 415	27,9
Sep '04	29 305	13 527	15 778	11 643	4 135	26,2

Sources: Stats SA, *Labour force surveys 2001-2004* (Statistical release P0210)

Totals include unspecified gender.



6.2 Population of working age (15-65 years) by population group and labour market status according to the official definition of unemployment, 2001-2004 (thousands)

Population group	Total	Not economically active	Economically active			
			Sub-total	Workers	Unemployed	Unemployment rate %
Black African						
Feb '01	20 446	8 793	11 653	8 027	3 627	31,1
Sep '01	20 713	9 760	10 953	7 024	3 929	35,9
Feb '02	20 811	9 267	11 544	7 482	4 061	35,2
Sep '02	21 272	9 819	11 453	7 239	4 213	36,8
Mar '03	22 923	10 514	12 409	7 818	4 592	37,0
Sep '03	23 226	11 394	11 832	7 844	3 988	33,7
Mar '04	22 496	11 026	11 470	7 550	3 921	34,2
Sep '04	22 645	11 179	11 466	7 874	3 592	31,3
Coloured						
Feb '01	2 641	911	1 730	1 351	379	21,9
Sep '01	2 576	933	1 642	1 284	358	21,8
Feb '02	2 510	832	1 678	1 264	414	24,6
Sep '02	2 591	922	1 669	1 299	370	22,1
Mar '03	2 710	935	1 775	1 383	392	22,1
Sep '03	2 809	1 044	1 764	1 384	380	21,5
Mar '04	2 653	957	1 696	1 390	306	18,0
Sep '04	2 685	1 025	1 660	1 298	362	21,8
Indian or Asian						
Feb '01	789	296	492	405	87	17,6
Sep '01	929	336	593	484	109	18,4
Feb '02	1 022	411	611	497	114	18,7
Sep '02	854	308	547	432	115	21,0
Mar '03	880	333	547	424	123	22,5
Sep '03	920	354	566	470	96	16,9
Mar '04	836	332	504	420	83	16,5
Sep '04	823	339	484	419	65	13,4



6.2 Population of working age (15-65 years) by population group and labour market status according to the official definition of unemployment, 2001-2004 (thousands) (concluded)

Population group	Total	Not economically active	Economically active			
			Sub-total	Workers	Unemployed	Unemployment rate %
White						
Feb '01	3 206	1 030	2 176	2 033	143	6,6
Sep '01	3 108	964	2 144	2 016	128	6,0
Feb '02	3 277	1 024	2 254	2 114	140	★
Sep '02	3 203	1 040	2 163	2 031	133	6,1
Mar '03	3 023	951	2 072	1 930	142	6,9
Sep '03	2 946	925	2 021	1 916	105	5,2
Mar '04	3 131	1 002	2 129	2 025	104	4,9
Sep '04	3 099	967	2 132	2 016	116	5,4
Total						
Feb '01	27 121	11 044	16 077	11 837	4 240	26,4
Sep '01	27 365	12 006	15 358	10 833	4 525	29,5
Feb '02	27 673	11 543	16 130	11 393	4 738	29,4
Sep '02	27 984	12 118	15 866	11 029	4 837	30,5
Mar '03	29 555	12 740	16 815	11 565	5 250	31,2
Sep '03	29 917	13 725	16 192	11 622	4 570	28,2
Mar '04	29 131	13 324	15 807	11 392	4 415	27,9
Sep '04	29 305	13 527	15 778	11 643	4 135	26,2

Sources: Stats SA, *Labour force surveys 2001-2004* (Statistical release P0210)

★ For all values of 10 000 or lower the sample size is too small for reliable estimates.

Totals include unspecified and other population groups.



6.3 The employed¹ (15-65 years) by main occupation and province, 2001-2004 (thousands)

Main occupation	Eastern Cape	Free State	Gauteng	KwaZulu-Natal	Limpopo	Mpumalanga	Northern Cape	North West	Western Cape	South Africa
Total										
Feb '01	1 374	813	2 887	2 353	942	820	245	884	1 519	11 837
Sep '01	1 258	785	2 743	1 955	848	719	230	798	1 497	10 833
Feb '02	1 628	767	2 776	2 002	870	753	233	822	1 542	11 393
Sep '02	1 235	793	2 777	2 091	847	712	248	802	1 524	11 029
Mar '03	1 261	760	3 108	2 112	786	739	224	829	1 747	11 565
Sep '03	1 115	747	3 230	2 185	790	780	209	836	1 731	11 622
Mar '04	1 123	837	3 019	2 013	802	776	236	841	1 745	11 392
Sep '04	1 278	777	3 070	2 092	883	789	229	835	1 691	11 643
Legislators, senior officials and managers										
Feb '01	46	36	229	98	25	27	11	27	123	623
Sep '01	57	38	239	121	33	26	11	28	108	661
Feb '02	60	39	270	136	32	34	11	28	140	749
Sep '02	63	38	274	120	25	38	12	30	110	710
Mar '03	55	41	263	109	20	30	11	31	117	677
Sep '03	54	43	309	131	25	40	14	34	136	786
Mar '04	65	40	336	117	39	36	17	31	152	834
Sep '04	63	43	311	172	37	53	15	49	168	910
Professionals										
Feb '01	41	28	166	69	30	17	5	21	77	454
Sep '01	49	27	155	96	41	19	5	21	72	485
Feb '02	51	28	168	82	32	19	6	18	90	494
Sep '02	42	39	156	65	37	16	5	24	83	468
Mar '03	47	35	189	82	37	18	6	25	96	536
Sep '03	40	31	195	83	37	20	6	27	82	521
Mar '04	35	26	212	83	35	18	4	25	95	534
Sep '04	37	24	138	89	32	24	5	27	82	458

6.3 The employed¹ (15-65 years) by main occupation and province, 2001-2004 (thousands) (continued)

Main occupation	Eastern Cape	Free State	Gauteng	KwaZulu-Natal	Limpopo	Mpumalanga	Northern Cape	North West	Western Cape	South Africa
Technical and associate professionals										
Feb '01	113	58	321	228	101	71	19	69	186	1 167
Sep '01	114	65	323	232	87	59	15	79	172	1 146
Feb '02	127	78	314	239	105	75	21	78	186	1 222
Sep '02	127	74	354	248	106	62	19	71	164	1 225
Mar '03	107	58	336	229	94	55	15	73	207	1 174
Sep '03	109	71	373	239	81	64	14	72	169	1 192
Mar '04	126	73	339	216	76	60	19	65	158	1 132
Sep '04	138	89	321	208	84	42	15	76	177	1 149
Clerks										
Feb '01	87	53	377	182	48	48	22	64	181	1 064
Sep '01	91	58	362	200	48	65	23	63	191	1 101
Feb '02	88	65	385	199	57	64	24	67	176	1 124
Sep '02	89	67	402	195	49	61	24	70	177	1 133
Mar '03	76	60	431	197	37	55	21	67	191	1 137
Sep '03	79	65	433	208	58	62	21	65	210	1 201
Mar '04	78	68	433	181	50	62	24	57	218	1 172
Sep '04	103	71	405	174	50	50	22	77	217	1 169
Service workers and shop and market sales workers										
Feb '01	180	94	449	290	148	105	28	144	179	1 618
Sep '01	152	81	391	256	127	91	25	85	188	1 396
Feb '02	157	75	348	233	118	79	20	83	176	1 290
Sep '02	128	77	355	224	104	72	22	75	168	1 226
Mar '03	131	75	390	243	111	79	19	82	181	1 312
Sep '03	133	74	399	272	94	81	18	93	204	1 367
Mar '04	128	89	406	249	96	89	20	90	180	1 347
Sep '04	150	99	418	265	129	74	23	92	205	1 453

6.3 The employed¹ (15-65 years) by main occupation and province, 2001-2004 (thousands) (continued)

Main occupation	Eastern Cape	Free State	Gauteng	KwaZulu-Natal	Limpopo	Mpumalanga	Northern Cape	North West	Western Cape	South Africa
Skilled agricultural and fishery workers										
Feb '01	292	56	62	196	67	66	15	52	43	850
Sep '01	158	39	51	54	40	29	14	44	40	469
Feb '02	487	49	70	116	62	55	20	63	43	965
Sep '02	174	51	37	196	44	47	23	54	43	669
Mar '03	231	10	5	55	15	25	11	25	26	402
Sep '03	90	9	4	100	20	31	7	49	19	331
Mar '04	108	17	3	62	16	32	8	33	32	311
Sep '04	122	11	9	98	16	25	5	26	17	329
Craft and related trades workers										
Feb '01	118	116	387	288	115	135	28	135	178	1 499
Sep '01	162	111	360	222	123	116	26	136	177	1 434
Feb '02	127	102	341	242	112	112	27	142	154	1 360
Sep '02	145	93	372	242	123	109	25	114	179	1 403
Mar '03	112	99	401	244	87	119	22	116	204	1 405
Sep '03	139	107	404	223	93	114	24	121	220	1 445
Mar '04	102	120	377	236	96	127	24	118	217	1 417
Sep '04	150	117	410	258	112	155	32	109	195	1 538
Plant and machine operators and assemblers										
Feb '01	87	111	254	242	56	82	15	112	117	1 076
Sep '01	76	121	248	236	49	88	17	111	139	1 085
Feb '02	75	109	287	209	57	89	15	128	124	1 092
Sep '02	69	134	272	206	55	82	16	119	124	1 079
Mar '03	65	121	331	241	65	90	18	139	164	1 234
Sep '03	60	115	324	256	52	78	14	122	143	1 163
Mar '04	64	124	292	222	54	69	23	150	159	1 158
Sep '04	90	104	328	216	77	81	21	92	104	1 113

6.3 The employed¹ (15-65 years) by main occupation and province, 2001-2004 (thousands) (concluded)

Main occupation	Eastern Cape	Free State	Gauteng	KwaZulu-Natal	Limpopo	Mpumalanga	Northern Cape	North West	Western Cape	South Africa
Elementary occupations										
Feb '01	286	176	425	551	281	207	74	176	344	2 520
Sep '01	281	160	369	365	239	167	64	159	311	2 115
Feb '02	303	131	348	358	228	165	63	133	354	2 083
Sep '02	257	133	379	410	238	159	70	174	381	2 202
Mar '03	307	175	522	478	254	204	73	191	440	2 645
Sep '03	284	161	518	446	260	228	67	173	437	2 574
Mar '04	305	207	437	455	278	228	73	206	436	2 624
Sep '04	317	162	515	407	288	217	70	220	424	2 619

Source: Stats SA, Labour force database

¹ Includes employers, employees and self-employed.

Totals include domestic workers, other and unspecified occupation.



6.4 The employed¹ (15-65 years) by main industry and province, 2001-2004 (thousands)

Main occupation	Eastern Cape	Free State	Gauteng	KwaZulu-Natal	Limpopo	Mpumalanga	Northern Cape	North West	Western Cape	South Africa
Total										
Feb '01	1 374	813	2 887	2 353	942	820	245	884	1 519	11 837
Sep '01	1 258	785	2 743	1 955	848	719	230	798	1 497	10 833
Feb '02	1 628	767	2 776	2 002	870	753	233	822	1 542	11 393
Sep '02	1 235	793	2 777	2 091	847	712	248	802	1 524	11 029
Mar '03	1 261	760	3 108	2 112	786	739	224	829	1 747	11 565
Sep '03	1 115	747	3 230	2 185	790	780	209	836	1 731	11 622
Mar '04	1 123	837	3 019	2 013	802	776	236	841	1 745	11 392
Sep '04	1 278	777	3 070	2 092	883	789	229	835	1 691	11 643
Agriculture, hunting, forestry and fishing										
Feb '01	360	114	21	311	142	133	56	69	187	1 394
Sep '01	249	109	21	150	132	87	53	84	167	1 051
Feb '02	569	98	21	231	155	113	57	95	200	1 538
Sep '02	262	119	36	341	129	106	64	93	198	1 347
Mar '03	330	99	18	231	117	111	56	87	238	1 288
Sep '03	182	107	33	253	113	124	55	107	223	1 197
Mar '04	211	132	27	239	123	110	63	91	263	1 258
Sep '04	207	73	63	209	114	112	45	88	152	1 063
Mining and quarrying										
Feb '01	1	104	137	11	25	63	25	133	4	504
Sep '01	3	103	128	5	28	57	21	137	5	487
Feb '02	5	90	125	3	33	56	20	144	5	482
Sep '02	2	95	132	4	35	60	25	144	2	499
Mar '03	0	84	138	8	32	66	20	164	2	514
Sep '03	4	86	151	1	28	55	21	155	1	503
Mar '04	1	99	119	5	28	82	19	202	4	558
Sep '04	4	89	87	5	61	39	24	95	1	405

6.4 The employed¹ (15-65 years) by main industry and province, 2001-2004 (thousands) (continued)

Main occupation	Eastern Cape	Free State	Gauteng	KwaZulu-Natal	Limpopo	Mpumalanga	Northern Cape	North West	Western Cape	South Africa
Manufacturing										
Feb '01	141	65	477	433	56	88	16	78	275	1 627
Sep '01	135	76	476	403	69	86	15	80	266	1 605
Feb '02	149	77	469	395	68	88	12	84	272	1 614
Sep '02	132	78	501	395	63	87	13	72	290	1 631
Mar '03	129	70	539	383	51	78	14	86	319	1 668
Sep '03	124	68	538	377	52	87	9	69	309	1 634
Mar '04	126	74	504	339	66	76	15	61	333	1 594
Sep '04	171	80	518	382	67	105	14	90	287	1 714
Electricity, gas and water supply										
Feb '01	5	4	20	17	15	20	1	5	7	93
Sep '01	11	4	19	18	11	18	3	4	6	95
Feb '02	4	5	22	13	11	15	3	6	7	85
Sep '02	6	4	15	15	8	18	1	4	9	81
Mar '03	8	1	22	15	11	16	2	4	9	88
Sep '03	2	5	26	18	6	13	3	3	10	86
Mar '04	6	1	35	17	12	14	1	4	15	106
Sep '04	4	3	37	14	8	15	1	7	10	99
Construction										
Feb '01	72	35	132	108	60	44	10	37	91	589
Sep '01	104	30	120	91	59	50	9	39	91	594
Feb '02	83	27	112	105	52	46	9	37	73	544
Sep '02	92	21	125	101	48	39	10	39	95	570
Mar '03	73	24	150	103	44	44	7	28	110	583
Sep '03	101	30	132	118	43	44	6	30	122	626
Mar '04	89	38	127	119	54	50	8	32	143	659
Sep '04	120	43	215	120	58	67	12	44	144	824

6.4 The employed¹ (15-65 years) by main industry and province, 2001-2004 (thousands) (continued)

Main occupation	Eastern Cape	Free State	Gauteng	KwaZulu-Natal	Limpopo	Mpumalanga	Northern Cape	North West	Western Cape	South Africa
Wholesale and retail										
Feb '01	301	174	709	603	320	219	41	223	324	2 916
Sep '01	283	146	609	430	244	183	37	164	302	2 397
Feb '02	279	145	614	400	221	173	37	149	287	2 305
Sep '02	227	131	586	394	223	161	36	155	266	2 177
Mar '03	242	143	672	411	205	175	33	154	339	2 373
Sep '03	215	146	711	442	208	190	32	159	348	2 451
Mar '04	209	155	710	396	199	178	42	158	308	2 355
Sep '04	257	167	680	450	250	182	39	177	341	2 542
Transport, storage and communication										
Feb '01	51	25	179	129	25	30	7	37	72	554
Sep '01	53	28	175	123	21	27	8	24	83	543
Feb '02	53	25	201	113	18	24	7	27	87	556
Sep '02	55	26	197	122	20	24	6	25	76	550
Mar '03	44	25	221	133	22	26	7	31	91	598
Sep '03	44	25	194	119	28	29	8	23	93	563
Mar '04	46	26	208	123	24	22	6	35	91	582
Sep '04	49	30	187	130	29	34	9	25	70	563
Financial insurance, real estate and business services										
Feb '01	57	47	445	146	28	35	10	52	166	985
Sep '01	59	40	419	181	25	39	10	32	169	975
Feb '02	64	37	427	178	36	48	11	34	199	1 033
Sep '02	53	43	472	156	28	34	11	45	178	1 021
Mar '03	50	42	478	166	20	41	8	37	185	1 027
Sep '03	60	37	510	188	22	42	7	34	179	1 079
Mar '04	58	48	490	168	26	52	10	34	183	1 070
Sep '04	74	46	481	161	42	40	12	61	230	1 147

6.4 The employed¹ (15-65 years) by main industry and province, 2001-2004 (thousands) (concluded)

Main occupation	Eastern Cape	Free State	Gauteng	KwaZulu-Natal	Limpopo	Mpumalanga	Northern Cape	North West	Western Cape	South Africa
Community, social and personal services										
Feb '01	237	137	496	354	185	113	47	145	285	2 000
Sep '01	225	145	497	355	190	103	39	144	290	1 988
Feb '02	245	148	477	352	202	116	44	135	299	2 020
Sep '02	245	161	497	354	211	107	43	134	295	2 046
Mar '03	229	161	586	397	202	111	41	140	316	2 183
Sep '03	241	154	622	405	210	126	40	149	317	2 265
Mar '04	243	169	588	387	190	125	44	134	279	2 158
Sep '04	266	166	549	387	188	107	45	154	322	2 185
Private households										
Feb '01	143	107	252	212	82	72	31	102	98	1 099
Sep '01	131	102	259	195	66	69	35	91	107	1 055
Feb '02	174	113	276	208	73	71	33	107	104	1 159
Sep '02	157	109	177	201	82	74	39	91	111	1 041
Mar '03	156	108	252	260	80	72	36	99	138	1 202
Sep '03	141	88	289	261	80	68	28	103	127	1 185
Mar '04	133	95	200	219	78	65	28	88	120	1 025
Sep '04	124	80	246	231	65	81	27	92	130	1 075

Source: Stats SA, Labour force database

¹ Includes employers, employees and self-employed.

Totals include extraterritorial organisations and foreign governments, other and unspecified industry.



6.5 Number of employees and gross salaries and wages according to major industrial groups of manufacturing and construction, 2000-2003

	Number of employees (thousands)				Gross salaries and wages (R millions)			
	2000	2001	2002	2003	2000	2001	2002	2003
Manufacturing	1 280	1 260	1 253	1 255	19 896	21 571	22 089	24 640
Food, beverages and tobacco	184	180	186	158	2 684	2 891	2 666	2 429
Textiles, clothing and leather	216	210	206	193	1 831	1 783	1 862	1 981
Wood, paper, printing and publishing	183	170	145	159	2 510	2 732	2 568	3 210
Coke oven products, petroleum, chemicals and rubber products	183	183	178	200	3 895	3 996	4 494	5 574
Non-metallic products	41	40	56	60	678	709	908	944
Basic metals, metal products and machinery	217	227	231	242	4 151	4 562	4 778	5 529
Electric machinery	84	79	37	33	1 427	1 857	777	769
Professional equipment	21	18	20	23	387	434	660	637
Transport equipment	87	87	95	94	1 691	1 880	1 843	2 016
Furniture, manufacturing and recycling	64	67	97	94	643	727	1 534	1 554
Construction ¹	222	213	350	288	2 112	2 292	3 671	3 421
Total (Manufacturing and Construction)	1 502	1 473	1 603	1 543	22 008	23 863	25 760	28 061

Sources: Stats SA, *Survey of employment and earnings in selected industries* (Statistical release P0271) (before 2001) and *Survey of employment and earnings* (Statistical release P0275) (from 2002)

¹ Construction includes site preparation, building of complete constructions or parts thereof, and civil engineering; building installation; building completion; and renting of construction/demolition equipment with operators.

Stats SA made use of administrative sources such as the VAT database from the South African Revenue Services (SARS) to re-engineer the register of businesses, which serves as the sampling frame for Stats SA surveys. Since 2002 the sample for the manufacturing industry was drawn from this sampling frame on an enterprise level. An enterprise (firm) is a legal unit, or a combination of legal units that includes and directly controls all functions necessary to carry out its production activities. Prior to 2002 the sample for the manufacturing industry was drawn on an establishment (branch) level. An establishment (branch) is defined as an enterprise, or part of an enterprise, that is situated at a single location and in which only single productive activities are carried out or in which principle productive activities account for most of the value added.



Prices

7

7

7.1	Production price index (PPI) and consumer price index (CPI) for the metropolitan areas, 1999-2004 (base year 2000=100)	53
7.2	Annual inflation on a monthly basis for the PPI, 2004	53
7.3	Annual inflation on a monthly basis in the CPI for the metropolitan areas, 2004	53
7.4	Percentage change in the average annual production price and consumer price indices, 1999-2004	54
7.5	Consumer price index (CPI) by province, 1999-2004 (base year 2000=100)	55
7.6	Consumer price index excluding interest rates on mortgage bonds (CPIX) and core index for the metropolitan and other urban areas, 1999-2004 (base year 2000=100)	56
7.7	Relative price fluctuations (based on the consumer price index), 1910-2004	57

7.1 Production price index (PPI) and consumer price index (CPI) for the metropolitan areas, 1999-2004 (base year 2000=100)

	1999	2000	2001	2002	2003	2004
Production price index ¹	91,6	100,0	108,4	123,8	125,9	126,7
Locally produced commodities	93,2	100,0	107,8	122,4	127,2	130,1
Imported commodities	87,4	100,0	110,0	127,1	121,8	117,1
Percentage change compared with the previous year ²						
Consumer price index ¹	94,9	100,0	105,7	115,4	122,1	123,8
Percentage change compared with the previous year (inflation rate) ²	5,2	5,4	5,7	9,2	5,8	1,4

¹ Average annual index (2000=100).

² Based on the average annual index.

7.2 Annual inflation on a monthly basis for the PPI, 2004

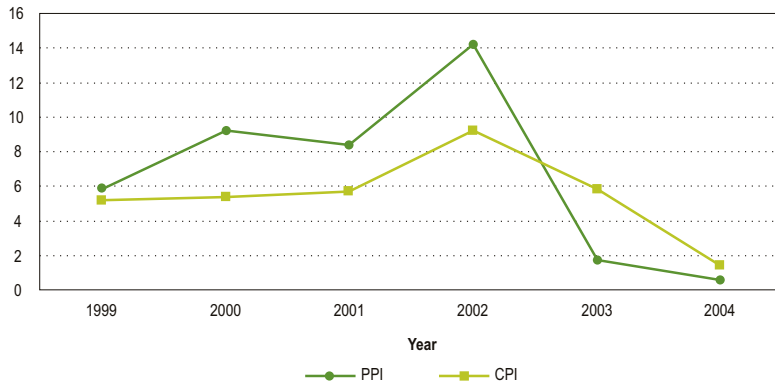
	Jan	Feb	Mar	Apr	May	Jun	Jul	Aug	Sep	Oct	Nov	Dec
Index	124,6	125,2	125,0	126,3	126,3	128,3	128,0	127,9	126,8	127,4	127,7	127,0
%	-1,4	-1,0	-1,2	-0,2	1,2	1,3	0,7	1,1	1,4	1,9	2,5	1,9

7.3 Annual inflation on a monthly basis in the CPI for the metropolitan areas, 2004

	Jan	Feb	Mar	Apr	May	Jun	Jul	Aug	Sep	Oct	Nov	Dec
Index	121,8	122,4	123,2	123,4	123,5	123,9	124,3	124,1	124,1	124,6	125,3	125,0
%	0,2	0,7	0,4	0,2	0,6	1,2	1,6	1,0	1,3	2,4	3,7	3,4

Sources: Stats SA, *Production price index (PPI)* (Statistical release P0142.1) and *Consumer price index (CPI)* (Statistical release P0141.1)

7.4 Percentage change in the average annual production price and consumer price indices, 1999-2004



Sources: Stats SA, *Production price index (PPI)* (Statistical release P0142.1) and *Consumer price index (CPI)* (Statistical release P0141.1)

7.5 Consumer price index (CPI) by province, 1999-2004 (base year 2000=100)

	Eastern Cape	Free State	Gauteng	KwaZulu- Natal	Mpuma- langa	Northern Cape	Limpopo	North West	Western Cape	South Africa
Consumer price index (all items)										
1999	95,2	95,2	95,1	94,7	94,7	94,9	94,6	94,7	95,8	94,9
2000	100,0	100,0	100,0	100,0	100,0	100,0	100,0	100,0	100,0	100,0
2001	105,2	104,9	105,3	105,8	105,6	106,6	105,5	105,4	106,0	105,7
2002	116,7	112,5	114,6	116,3	116,8	116,8	114,9	115,3	116,5	115,4
2003	124,1	118,4	121,7	123,4	124,6	124,4	120,8	123,3	123,4	122,1
2004	126,5	120,4	123,7	124,8	126,7	126,7	121,5	123,8	125,2	123,8
Percentage change compared with the previous year (inflation rate)										
1999	5,5%	4,8%	5,3%	4,8%	5,7%	4,6%	5,3%	6,2%	4,5%	5,2%
2000	5,0%	5,0%	5,2%	5,6%	5,6%	5,4%	5,7%	5,6%	4,4%	5,4%
2001	5,2%	4,9%	5,3%	5,8%	5,6%	6,6%	5,5%	5,4%	6,0%	5,7%
2002	10,9%	7,2%	8,8%	9,9%	10,6%	9,6%	8,9%	9,4%	9,9%	9,2%
2003	6,3%	5,2%	6,2%	6,1%	6,7%	6,5%	5,1%	6,9%	5,9%	5,8%
2004	1,9%	1,7%	1,6%	1,1%	1,7%	1,8%	0,6%	0,4%	1,5%	1,4%

Source: Stats SA, *Consumer price index* (Statistical release P0141.1)

Percentage change compared with the previous year (inflation rate) is based on the annual average weighted index. From 1997 the indices are based on information for the main metropolitan areas, as well as other urban areas; prior to 1997 the indices were based on information for metropolitan areas only.

7.6 Consumer price index excluding interest rates on mortgage bonds (CPIX) and core index for the metropolitan and other urban areas, 1999-2004 (base year 2000=100)

	1999	2000	2001	2002	2003	2004
CPIX ¹	92,8	100,0	106,6	116,5	124,4	129,8
Core index ²	92,9	100,0	106,9	115,7	123,4	129,1
Food price index ³	92,7	100,0	105,4	122,0	131,9	134,9

Sources: Stats SA, *Consumer price index (CPI)* (Statistical releases P0141.1 and P0141.4)

¹ CPIX is the CPI which excludes interest rates on mortgage bonds.

² The core index is derived from the CPI by making certain exclusions.

The exclusions, and the reasons for exclusions, are as follows:

- Fresh and frozen meat and fish: prices may be highly volatile, particularly during and following periods of drought.
- Fresh and frozen vegetables and fresh fruit and nuts: prices may be highly volatile from month to month due to their sensitivity to climatic conditions.
- Interest rates on mortgage bonds and overdrafts/personal loans: these are excluded due to their 'perverse' effect on the CPI. A tightening in monetary policy to counter inflation pressures would cause interest rates to rise and be reflected in the interdict cost component of measured inflation. This, in turn, could provoke a further tightening of monetary policy, resulting in excessive movements in the inflation rate.
- Changes in value-added tax (VAT): VAT is predominantly determined by government (fiscal policy).
- Assessment rates: these taxes are predominantly determined by local government.

³ The food price index figures are only for the metropolitan areas.



7.7 Relative price fluctuations (based on the consumer price index), 1910-2004

	1910	1930	1950	1970	1980	1985	1990	1995	1996	1997	1998	1999	2000	2001	2002	2003	2004
1910	1,00																
1930	1,40	1,00															
1950	2,10	1,50	1,00														
1970	3,90	2,79	1,86	1,00													
1980	10,80	7,71	5,14	2,77	1,00												
1985	20,80	14,86	9,90	5,33	1,93	1,00											
1990	42,40	30,29	20,19	10,87	3,93	2,04	1,00										
1995	72,40	51,71	34,48	18,56	6,70	3,48	1,71	1,00									
1996	77,70	55,50	37,00	19,92	7,19	3,74	1,83	1,07	1,00								
1997	84,40	60,29	40,19	21,64	7,81	4,06	1,99	1,17	1,09	1,00							
1998	90,20	64,43	42,95	23,13	8,35	4,34	2,13	1,25	1,16	1,07	1,00						
1999	94,90	67,79	45,19	24,33	8,79	4,56	2,24	1,31	1,22	1,12	1,05	1,00					
2000	100,00	71,43	47,62	25,64	9,26	4,81	2,36	1,38	1,29	1,18	1,11	1,05	1,00				
2001	105,70	75,50	50,33	27,10	9,79	5,08	2,49	1,46	1,36	1,25	1,17	1,11	1,06	1,00			
2002	115,40	82,43	54,95	29,59	10,69	5,55	2,72	1,59	1,49	1,37	1,28	1,22	1,15	1,09	1,00		
2003	122,10	87,21	58,14	31,31	11,31	5,87	2,88	1,69	1,57	1,45	1,35	1,29	1,22	1,16	1,06	1,00	
2004	123,80	88,43	58,95	31,47	11,46	5,95	2,92	1,71	1,59	1,47	1,37	1,30	1,24	1,17	1,07	1,01	1,00

Source: Stats SA

The table indicates the average level of consumer prices in any specific year compared with a rand (100c) in different base years. For example, food and services that would have cost **R1,00** in **1990**, cost **R2,92** in **2004**, and food and services that would have cost **R1,00** in **2000**, cost **R1,24** in **2004**.





Scroll down

8

Mining



8

8.1	Index of the physical volume of mining production, 1999-2003 (base year 2000=100)	61
8.2	Total value of mineral sales, 1999-2003 (R millions)	62

8.1 Index of the physical volume of mining production, 1999-2003 (base year 2000=100)

	1999 ¹	2000 ²	2001 ²	2002 ²	2003 ²
Physical volume, including gold Actual indices	101,5	100,0	101,4	102,2*	106,6
Physical volume, excluding gold Actual indices	99,5	100,0	104,8	105,6*	113,6

Source: Stats SA, *Mining: Production and sales* (Statistical release P2041)

¹ Indices from 1995-1999 (base year 1995=100).

² Indices from 2000-2003 (base year 2000=100).



8.2 Total value of mineral sales, 1999-2003 (R millions)

	1999	2000	2001	2002	2003
Mineral sales, including gold Actual values	76 431	98 338	115 358*	137 505*	117 805
Mineral sales, excluding gold Actual values	51 441	73 066	86 347*	96 119*	84 752

Source: Stats SA, *Mining: Production and sales* (Statistical release P2041)



Manufacturing

9



9

- | | | |
|-----|---|----|
| 9.1 | Index of the physical volume of manufacturing production by manufacturing division (actual indices), 1998-2004 (base year 2000=100) | 65 |
| 9.2 | Value of sales of manufactured products by manufacturing division (actual values), 1998-2004 (R thousands) | 66 |
| 9.3 | Utilisation of production capacity on selected major divisions, 1999-2004 (percentages) | 93 |

9.1 Index of the physical volume of manufacturing production by manufacturing division (actual indices), 1998-2004 (base year 2000=100)

	1998	1999	2000	2001	2002	2003	2004
Manufacturing division							
Food and beverages	104,1	102,8	100,0	105,0	102,0	103,9	111,8
Textiles, clothing, leather and footwear	103,9	102,9	100,0	97,3	104,1	96,3	100,4
Wood and wood products; paper; publishing and printing	95,9	98,4	100,0	97,6	100,4	100,8	104
Petroleum, chemical products, rubber and plastic products	96,8	98,9	100,0	103,2	110,8	106,5	110,7
Glass and non-metallic mineral products	97,6	89,1	100,0	103,5	108,6	106,7	113,1
Basic iron and steel, non-ferrous metal products; metal products and machinery	95,4	91,3	100,0	104,2	112,9	111,3	113,9
Electrical machinery	97,7	94,6	100,0	101,4	103,0	101,7	98,6
Radio, television and communication apparatus; professional equipment	97,4	100,4	100,0	93,4	98,9	103,8	111,3
Motor vehicles, parts and accessories and other transport equipment	80,0	87,2	100,0	108,2	110,3	107,9	115,4
Furniture and other manufacturing divisions	103,7	100,5	100,0	98,5	104,1	97,4	101,0
Total	96,9	96,4	100,0	102,8	107,4	105,4	109,9

Source: Stats SA, *Manufacturing: Production and sales* (Statistical release P3041.2)

The sample survey is based on a new business register developed by Stats SA, based on the units registered for value-added tax (VAT) and income tax, obtained from the South African Revenue Service (SARS), which replaced the previous business register.



9.2 Value of sales of manufactured products by manufacturing division (actual values), 1998-2004 (R thousands)

	1998	1999	2000	2001	2002	2003	2004
Manufacturing division							
Food and beverages	92 026 910	96 263 024	99 478 966	112 928 280	134 230 930	137 543 201	150 794 199
Textiles, clothing, leather and footwear	32 973 951	34 158 363	34 158 566	35 647 191	41 595 746	40 159 365	41 695 164
Wood and wood products; paper; publishing and printing	43 788 238	47 621 244	51 741 485	55 908 390	65 452 912	67 925 326	70 228 139
Petroleum, chemical products, rubber and plastic products	83 902 687	90 887 693	108 191 010	124 685 708	153 163 047	144 063 189	156 215 360
Glass and non-metallic mineral products	11 897 666	11 716 418	13 686 090	15 481 157	18 275 704	19 360 454	22 153 630
Basic iron and steel, non-ferrous metal products; metal products and machinery	93 232 552	93 992 582	107 630 338	118 967 290	150 487 668	152 398 582	169 868 082
Electrical machinery	14 217 394	14 476 944	16 160 130	17 115 758	20 426 124	19 881 595	20 602 189
Radio, television and communication apparatus; professional equipment	7 939 886	8 378 739	8 854 650	8 293 500	10 214 571	10 681 644	11 370 745
Motor vehicles, parts and accessories and other transport equipment	50 374 774	59 458 334	74 881 641	88 884 811	110 266 977	106 983 609	117 742 616
Furniture and other manufacturing divisions	21 335 328	23 574 622	28 170 909	31 139 746	36 661 842	32 715 492	35 056 571
Total	451 689 386	480 527 963	542 953 785	609 051 831	740 775 521	731 712 457	795 726 695

Source: Stats SA, *Manufacturing: Production and sales* (Statistical release P3041.2)

For 2003 the level of manufacturing sales is approximately 3% higher than the level from the previous series. This is a direct reflection of a major drive to improve the coverage of established economic statistics series by basing them on a new, much more comprehensive register.



9.3 Utilisation of production capacity on selected major divisions, 1999-2004 (percentages)

	1999	2000	2001	2002	2003	2004 ²
Food and beverages	76,4	76,3	77,6	76,6	77,2	80,8
Textiles, clothing, leather and footwear	84,0	82,9	81,1	83,8	80,8	83,7
Wood and wood products, paper, publishing and printing	84,3	84,3	82,8	84,4	85,8	87,7
Petroleum, chemical products, rubber and plastic products	78,9	78,0	80,3	80,7	80,8	84,0
Basic iron and steel, non-ferrous metal, metal products and machinery	81,1	83,7	83,9	84,3	83,9	85,3
Motor vehicles, parts and accessories and other transport equipment	69,3	74,0	73,6	77,3	76,3	81,8
Furniture and other manufacturing industries	79,8	78,4	78,5	79,5	81,4	89,2
All manufacturing ¹	79,1	80,0	80,3	81,1	81,2	84,5

¹ Total includes all manufacturing divisions.

² Comparability break: From 2004 the results are from a new survey based on Stats SA's new business register.





Scroll down

10

Construction



10

10.1	Actual expenditure on new construction works by the public sector, including reconstruction and development programmes (RDP), according to type of new construction works, 1999-2003 (R thousands)	71
10.2	Capital expenditure by the national and provincial governments for the financial year ended 31 March on reconstruction and development programmes (RDP), according to type of new construction works, 1999-2003 (R thousands)	72

10.1 Actual expenditure on new construction works by the public sector, including reconstruction and development programmes (RDP), according to type of new construction works, 1999-2003 (R thousands)

	1999	2000	2001	2002	2003
Capital expenditure on new construction works					
Residential buildings	1 240 769	1 701 899	2 216 635	2 445 201	3 945 488
Non-residential buildings	2 740 340	3 173 420	3 099 252	3 613 595	5 112 066
Roads, streets and bridges	2 195 772	2 319 301	2 777 388	2 674 863	5 422 249
Water schemes and works	1 198 963	1 562 741	2 045 083	1 973 878	3 010 980
Sewerage, sanitation and cleansing	745 865	803 888	1 160 844	772 493	1 374 151
Other	7 429 032	7 822 363	6 641 635	7 675 289	15 985 429
Electricity supply ¹	1 282 753	1 097 642	1 634 868
Total	15 550 741	17 383 612	19 223 590	20 252 961	36 485 231

Source: Stats SA, *Capital expenditure on new construction works by the public sector by statistical region* (Statistical release P9101.2)

¹ Electricity figures were only published separately from 2001 onwards.

New construction works include residential buildings, non-residential buildings, roads, streets and bridges, sewerage, water works, electricity and other constructions.



10.2 Capital expenditure by the national and provincial governments for the financial year ended 31 March on reconstruction and development programmes (RDP), according to type of new construction works, 1999-2003 (R thousands)

	National and provincial governments				
	1999	2000	2001	2002	2003
Capital expenditure on RDP					
Residential buildings	254 182	200 824	446 714	824 306	1 160 983
Non-residential buildings	45 457	13 183	62 455	4 399	8 172
Roads, streets, bridges and related constructions	67 022	14 310	9 561	75 324	13 707
Water schemes and works	69 537	144 323	107 174	94 115	109 215
Sewerage, sanitation and cleansing	28 347	31 052	19 107	22 701	22 904
Electricity supply	2 500	7 448	43	3 597	0
Other construction	8 680	12 388	195 541	97 650	93 121
Total	475 725	423 528	840 595	1 122 092	1 408 102

Source: Stats SA, *Capital expenditure by the public sector* (Statistical release P9101.1)



Energy

11



11

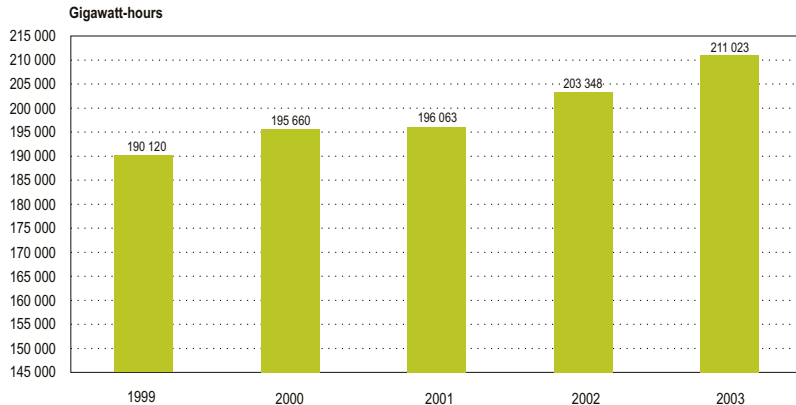
11.1 | Electricity consumed in South Africa, 1999-2003

75

11.2 | Electricity consumption by province, 1999-2003 (gigawatt-hours)

76

11.1 Electricity consumed in South Africa, 1999-2003



Source: Stats SA, *Generation and consumption of electricity* (Statistical release P4141)



11.2 Electricity consumption by province, 1999-2003 (gigawatt-hours)

	Eastern Cape	Free State	Gauteng	KwaZulu- Natal	Limpopo	Mpuma- langa	Northern Cape	North West	Western Cape	South Africa
1999	5 516	9 842	52 127	38 633	8 063	29 225	3 309	23 144	20 260	190 119
2000*	6 551	10 310	53 657	39 355	8 246	26 419	3 436	26 186	21 500	195 660
2001 ¹	6 702	9 467	48 136	36 759	7 173	26 389	4 350	24 328	19 261	182 565
2002	6 992	9 405	52 007	37 629	8 571	25 518	4 175	26 601	19 700	190 598
2003	7 136	9 648	52 531	39 231	9 442	25 279	4 401	28 101	20 581	196 357

Source: Stats SA, *Generation and consumption of electricity* (Statistical release P4141)

¹ The figures as from 2001 are for wholesale energy delivered by Eskom.

The figures on consumption by province exclude the energy used by Eskom for its own consumption as from 2001, while the figures on the graph in 11.1 include Eskom's own consumption as from 2001. Hence the difference in the data for 2001 in Table 11.2 and on the graph in 11.1.



12

Transport





12

12.1 | Volume of goods transported by road and rail, 1999-2003
(thousand metric tons)

12.1 Volume of goods transported by road and rail, 1999-2003 (thousand metric tons)

	1999	2000	2001	2002	2003
Private undertakings	432 872	440 255	475 703	488 641	504 674
Transnet	178 992	184 230	184 442	181 551	184 996
Total volume	611 864	624 485	660 145	670 192	689 670

Source: Stats SA, *Land freight transport* (Statistical release P7142)





Scroll down

Financial statistics: Private enterprises operating in the formal non-agriculture business sector

13





Financial statistics: Private enterprises operating in the formal non-agriculture business sector

13

13.1	Selected income and expenditure items: Mining and quarrying industry, 2001-2003 (R millions)	84
13.2	Selected income and expenditure items: Manufacturing industry, 2001-2003 (R millions)	84
13.3	Selected income and expenditure items: Electricity, gas and water supply industry, 2001-2003 (R millions)	85
13.4	Selected income and expenditure items: Construction industry, 2001-2003 (R millions)	85
13.5	Selected income and expenditure items: Trade industry, 2001-2003 (R millions)	86
13.6	Selected income and expenditure items: Transport, storage and communication industry, 2001-2003 (R millions)	86
13.7	Selected income and expenditure items: Community, social and personal services industry (excluding government institutions), 2001-2003 (R millions)	87
13.8	Selected income and expenditure items: Real estate and other business services industry (excluding financial intermediation and insurance), 2001-2003 (R millions)	87
13.9	Comparison of operating ratios between 2001-2003	88

Notes for Tables 13.1 - 13.8

¹ Includes the value of sales; amounts received for work done; amounts received for services rendered; rent and/or lease payments received for land and buildings; rent, leasing and hiring received for machinery, vehicles and other equipment, and excludes value-added tax (VAT); net profit or loss on sales or revaluation of fixed assets (including profit or loss on foreign exchange); export freight charges; interest received and excise duty.

² Includes raw materials or materials for processing, packaging materials, fuel and consumable and maintenance stores; work in progress (partially completed); finished goods (own manufactures) and finished goods not produced by the enterprise but purchased for resale.

³ Is calculated as total income less total expenditure less opening stock plus closing stock.

⁴ Includes the erection of new buildings and works, additions to and alterations of existing buildings and works; capital work in progress capitalised; new plant and machinery, vehicles and equipment; and used plant and machinery, which was imported by or on behalf of the enterprise whether paid to outside contractors/concerns, or which was done by the enterprise itself.

⁵ Non-current assets are fixed assets and intangible assets valued at the book value at the end of the financial year according to the balance sheet.

⁶ The business services industry (Table 13.8) was not included in the Economic activity survey, 2003 in order to minimise respondent burden, because these businesses were already included in another large sample survey the results of which were not yet available at the time of going to print.



13.1 Selected income and expenditure items: Mining and quarrying industry, 2001-2003 (R millions)

Item	2001	2002	2003
Income items			
Turnover ¹	120 758	142 502	158 829
Interest received	2 357	3 453	3 947
Closing value of inventories ²	10 420	11 103	13 034
Net profit before providing for company tax and dividends ³	39 262	59 110	43 396
Capital expenditure on new assets ⁴	12 197	17 328	23 338
Book value of non-current assets at the end of the financial year ⁵	96 783	108 938	121 339

Source: Stats SA, *Economic activity survey, 2001, 2002 and 2003* (Statistical release P8001)

13.2 Selected income and expenditure items: Manufacturing industry, 2001-2003 (R millions)

Item	2001	2002	2003
Income items			
Turnover ¹	640 610	686 339	761 475
Interest received	5 842	6 052	6 728
Closing value of inventories ²	84 282	87 792	95 967
Net profit before providing for company tax and dividends ³	48 440	64 232	81 666
Capital expenditure on new assets ⁴	22 177	24 956	28 208
Book value of non-current assets at the end of the financial year ⁵	158 948	164 934	171 598

Source: Stats SA, *Economic activity survey, 2001, 2002 and 2003* (Statistical release P8001)



13.3 Selected income and expenditure items: Electricity, gas and water supply industry, 2001-2003 (R millions)

Item	2001	2002	2003
Income items			
Turnover ¹	36 145	35 929	39 011
Interest received	2 095	2 795	4 190
Closing value of inventories ²	2 737	2 488	2 314
Net profit before providing for company tax and dividends ³	4 081	3 967	6 012
Capital expenditure on new assets ⁴	6 204	5 963	4 782
Book value of non-current assets at the end of the financial year ⁵	65 784	62 257	63 155

Source: Stats SA, *Economic activity survey, 2001, 2002 and 2003* (Statistical release P8001)

13.4 Selected income and expenditure items: Construction industry, 2001-2003 (R millions)

Item	2001	2002	2003
Income items			
Turnover ¹	68 547	71 230	77 215
Interest received	603	590	632
Closing value of inventories ²	2 410	2 788	2 954
Net profit before providing for company tax and dividends ³	2 277	2 246	4 241
Capital expenditure on new assets ⁴	1 569	1 872	2 216
Book value of non-current assets at the end of the financial year ⁵	9 237	8 691	7 896

Source: Stats SA, *Economic activity survey, 2001, 2002 and 2003* (Statistical release P8001)



13.5 Selected income and expenditure items: Trade industry, 2001-2003 (R millions)

Item	2001	2002	2003
Income items			
Turnover ¹	679 178	744 145	809 298
Interest received	4 986	4 907	5 787
Closing value of inventories ²	66 092	69 338	70 751
Net profit before providing for company tax and dividends ³	24 067	25 663	31 126
Capital expenditure on new assets ⁴	8 700	8 022	9 572
Book value of non-current assets at the end of the financial year ⁵	62 214	63 910	61 969

Source: Stats SA, *Economic activity survey, 2001, 2002 and 2003* (Statistical release P8001)

13.6 Selected income and expenditure items: Transport, storage and communication industry, 2001-2003 (R millions)

Item	2001	2002	2003
Income items			
Turnover ¹	190 039	197 483	198 970
Interest received	3 921	4 054	3 439
Closing value of inventories ²	4 258	4 487	5 280
Net profit before providing for company tax and dividends ³	17 230	20 017	16 828
Capital expenditure on new assets ⁴	16 369	17 029	18 289
Book value of non-current assets at the end of the financial year ⁵	118 473	138 205	141 992

Source: Stats SA, *Economic activity survey, 2001, 2002 and 2003* (Statistical release P8001)



13.7 Selected income and expenditure items: Community, social and personal services industry (excluding government institutions), 2001-2003 (R millions)

Item	2001	2002	2003
Income items			
Turnover ¹	54 875	55 157	59 946
Interest received	1 080	1 295	1 220
Closing value of inventories ²	2 054	1 979	2 352
Net profit before providing for company tax and dividends ³	5 115	5 567	5 906
Capital expenditure on new assets ⁴	2 667	3 687	3 738
Book value of non-current assets at the end of the financial year ⁵	23 488	20 829	22 952

Source: Stats SA, *Economic activity survey, 2001, 2002 and 2003* (Statistical release P8001)

13.8 Selected income and expenditure items: Real estate and other business services industry (excluding financial intermediation and insurance)¹, 2001-2003 (R millions)

Item	2001	2002	2003
Income items			
Turnover ²	204 813	207 097	..
Interest received	4 921	5 147	..
Closing value of inventories ³	6 605	5 546	..
Net profit before providing for company tax and dividends ⁴	19 107	21 722	..
Capital expenditure on new assets ⁵	17 712	17 891	..
Book value of non-current assets at the end of the financial year ⁶	142 262	142 838	..

Source: Stats SA, *Economic activity survey, 2001, 2002 and 2003* (Statistical release P8001)



13.9 Comparison of operating ratios between 2001-2003

Industry	Turnover/Fixed assets ¹			Profit/Turnover ²			Profitability ratio ³		
	2001	2002	2003	2001	2002	2003	2001	2002	2003
Mining and quarrying industry	1,25	1,31	1,31	0,33	0,41	0,27	0,23	0,30	0,18
Manufacturing industry	4,03	4,16	4,44	0,08	0,09	0,11	0,05	0,07	0,08
Electricity, gas and water supply	0,55	0,58	0,62	0,11	0,11	0,15	0,07	0,07	0,11
Construction industry	7,42	8,20	9,78	0,03	0,03	0,05	0,03	0,03	0,05
Trade industry	10,92	11,64	13,06	0,04	0,03	0,04	0,03	0,02	0,03
Transport, storage and communication industry	1,60	1,43	1,40	0,09	0,10	0,08	0,07	0,08	0,06
Real estate and other business services industry (excluding financial intermediation and insurance)	1,44	1,45	..	0,09	0,10	..	0,07	0,08	..
Community, social and personal services industry (excluding government institutions)	2,34	2,65	2,61	0,09	0,10	0,10	0,07	0,08	0,08

¹ Turnover divided by book value of non-current assets at the end of the financial year.

² Profit before tax divided by turnover.

³ Net profit after tax divided by turnover.



13.9 Comparison of operating ratios between 2001-2003 (concluded)

Industry	Current ratio ¹			Acid test ratio ²		
	2001	2002	2003	2001	2002	2003
Mining and quarrying industry	1,00	0,77	0,86	0,86	0,67	0,74
Manufacturing industry	0,61	0,57	1,03	0,30	0,28	0,74
Electricity, gas and water supply	0,37	0,41	0,36	0,32	0,36	0,32
Construction industry	0,57	0,65	1,03	0,46	0,53	0,90
Trade industry	0,70	0,72	1,07	0,34	0,37	0,70
Transport, storage and communication industry	0,70	0,66	0,65	0,66	0,62	0,61
Real estate and other business services industry (excluding financial intermediation and insurance)	0,64	0,74	..	0,60	0,71	..
Community, social and personal services industry (excluding government institutions)	0,68	0,66	0,94	0,59	0,58	0,84

Source: Stats SA, *Economic activity survey, 2001, 2002 and 2003* (Statistical release P8001)

¹ Current assets divided by current liabilities.

² Current assets minus closing value of inventories divided by current liabilities.





Scroll down

Selected internal trade activities

14





Selected internal trade activities

14

- | | | |
|------|--|----|
| 14.1 | Summary of internal trade statistics, 2000-2004 (R millions) | 93 |
| 14.2 | Summary of trading statistics of hotels in South Africa, 1999-2003 | 94 |

14.1 Summary of internal trade statistics, 2000-2004 (R millions)

	2000	2001	2002	2003	2004
Retail trade sales¹					
Sales at current prices	228 782	248 338	280 054	310 029	351 182
Sales at constant prices	228 555	234 795	240 144	251 964	276 801
Wholesale trade¹					
Sales at current prices	294 709	327 675	383 904	421 363	484 900
Sales at constant June 1995 prices	294 452	303 104	311 982	336 258	380 787
Motor trade sales¹					
Trading income	110 913	128 509	153 601	172 535	202 845

Sources: Stats SA, *Retail trade sales* (Statistical release P6242.1), *Wholesale trade sales* (Statistical release P6141.2), *Motor trade sales* (Statistical release P6343.2) and *Hotels: Trading statistics* (Statistical release P6441)

¹ Stats SA introduced new wholesale trade sales, retail trade sales and motor trade sales surveys utilising an upgraded business register commencing in January 2005. The previous surveys and the current ones were run side by side from September to December 2004, which provided a set of factors that could be applied to the old series to revise previous estimates back to January 1998. The January 1998 to August 2004 figures are thus backcasted data based on the movements of the old series and the level of the new series.



14.2 Summary of trading statistics of hotels in South Africa, 1999-2003

	1999	2000	2001	2002	2003
Number of rooms					
Average room nights available	54 151	52 819	51 874	52 257	52 324
Total room nights sold	10 073 082	10 013 125	9 981 733	11 206 043	11 014 540
Number of beds					
Average bed nights available	110 418	108 737	108 906	110 133	110 488
Total bed nights sold	14 057 001	14 116 450	14 092 167	15 819 592	15 597 067
Income (R'000)					
Room income	3 022 550	3 185 338	3 340 424	4 293 022	4 582 754
Income from catering	1 167 451	1 198 408	1 222 546	1 450 555	1 562 951
Income from bar sales	507 868	483 496	470 855	496 145	510 872
Other income	324 763	352 547	339 564	399 773	413 913
Off sales	220 775
Total hotel income (R'000)	5 243 407	5 219 789	5 373 389	6 639 495	7 070 490

Source: Stats SA, *Hotels: Trading statistics* (Statistical release P6441)

The hotel trading statistics survey has been discontinued since March 2004. Stats SA is currently conducting the new accommodation survey, which includes bed and breakfast establishments, guest houses, hotels, lodges, self-catering accommodation, caravan parks and camping sites and other accommodation establishments.



Social services and housing

15



15.1	Households by energy source for cooking and province, 2002-2004 (thousands)	97
15.2	Households by energy source for heating and province, 2002-2004 (thousands)	98
15.3	Households by energy source for lighting and province, 2002-2004 (thousands)	99
15.4	Households by type of dwelling and province, 2002-2004 (thousands)	100
15.5	Households by energy source for cooking and population group, 2002-2004 (thousands)	102
15.6	Households by energy source for heating and population group, 2002-2004 (thousands)	103
15.7	Households by energy source for lighting and population group, 2002-2004 (thousands)	104
15.8	Households with and without a telephone facility by population group and gender of the household head, 2002 and 2003 (thousands)	105
15.9	Households by main source of water and province, 2002-2004 (thousands)	106
15.10	Households by sanitation facility and population group of the household head, 2002-2004 (thousands)	108
15.11	Households by type of refuse removal and population group of the household head 2002-2004 (thousands)	109

15.1 Households by energy source for cooking and province, 2002-2004 (thousands)

Energy source for cooking	Eastern Cape	Free State	Gauteng	KwaZulu-Natal	Limpopo	Mpumalanga	Northern Cape	North West	Western Cape	South Africa
Electricity from mains										
2002	453	443	2 046	1 235	357	348	147	440	899	6 370
2003	508	477	2 233	1 318	362	406	155	499	980	6 937
2004	487	486	2 336	1 412	375	401	161	530	1 046	7 234
Gas										
2002	46	23	22	41	9	11	15	28	51	247
2003	42	14	17	37	8	6	10	19	33	186
2004	47	15	25	47	10	7	10	17	23	202
Paraffin										
2002	499	167	311	340	95	95	34	207	116	1 865
2003	466	170	356	338	101	94	33	213	149	1 921
2004	479	165	303	326	112	99	27	217	116	1 845
Wood										
2002	662	72	24	521	744	160	35	198	63	2 479
2003	642	67	31	585	760	161	33	179	46	2 506
2004	615	66	25	546	766	154	35	180	34	2 420
Coal										
2002	2	59	66	42	11	149	2	14	-	344
2003	2	56	65	35	14	142	1	13	★	329
2004	2	56	54	33	17	134	★	10	★	307
Total										
2002	1 681	795	2 475	2 189	1 222	768	236	975	1 139	11 479
2003	1 682	822	2 712	2 328	1 248	813	235	989	1 212	12 041
2004	1 651	844	2 747	2 380	1 283	805	236	1 022	1 228	12 194

Source: Stats SA, *General household survey* (Statistical release P0318)

★ For all values of 10 000 or lower the sample size is too small for reliable estimates.

Totals include none, other and unspecified energy source.



15.2 Households by energy source for heating and province, 2002-2004 (thousands)

Energy source for heating	Eastern Cape	Free State	Gauteng	KwaZulu-Natal	Limpopo	Mpumalanga	Northern Cape	North West	Western Cape	South Africa
Electricity from mains										
2002	345	333	1 952	1 099	333	290	118	411	777	5 657
2003	357	363	2 124	1 190	342	356	129	431	804	6 095
2004	262	346	2 184	1 218	343	329	130	408	834	6 054
Gas										
2002	9	12	12	21	2	5	3	6	8	79
2003	12	11	11	22	4	3	3	3	9	77
2004	5	18	35	21	4	5	3	6	10	107
Paraffin										
2002	425	152	172	200	51	30	25	85	144	1 284
2003	420	147	184	170	51	32	24	68	166	1 262
2004	478	170	181	129	66	26	17	89	133	1 291
Wood										
2002	812	129	54	579	736	181	62	300	131	2 984
2003	804	109	83	634	768	157	61	270	129	3 016
2004	770	124	51	648	757	179	64	281	125	3 000
Coal										
2002	6	104	162	56	14	180	8	41	*	570
2003	1	106	178	44	21	159	5	44	1	560
2004	7	106	166	47	25	177	3	57	1	590
Total										
2002	1 681	795	2 475	2 189	1 222	768	236	975	1 139	11 479
2003	1 682	822	2 712	2 328	1 248	813	235	989	1 212	12 041
2004	1 651	844	2 747	2 380	1 283	805	236	1 022	1 228	12 194

Source: Stats SA, *General household survey* (Statistical release P0318)

* For all values of 10 000 or lower the sample size is too small for reliable estimates.

Totals include none, other and unspecified energy source.



15.3 Households by energy source for lighting and province, 2002-2004 (thousands)

Energy source for lighting	Eastern Cape	Free State	Gauteng	KwaZulu-Natal	Limpopo	Mpumalanga	Northern Cape	North West	Western Cape	South Africa
Electricity from mains										
2002	859	669	2 192	1 501	879	588	184	791	1 001	8 665
2003	919	704	2 393	1 647	933	651	188	851	1 083	9 368
2004	945	739	2 469	1 714	1 000	662	193	918	1 133	9 773
Gas										
2002	9	1	1	4	3	★	1	1	1	20
2003	6	1	1	1	1	★	1	-	★	10
2004	9	★	3	1	★	-	★	-	5	19
Paraffin										
2002	365	18	60	40	85	31	6	19	60	684
2003	329	20	61	34	74	14	6	14	32	584
2004	317	17	48	20	63	15	4	9	29	521
Candles										
2002	437	102	216	638	252	147	40	164	74	2 071
2003	417	94	254	638	233	146	37	124	95	2 038
2004	371	87	224	629	213	125	32	93	58	1 832
Solar energy										
2002	5	2	-	1	1	-	3	-	★	12
2003	4	2	-	5	4	-	1	★	★	17
2004	2	1	-	7	5	★	4	1	-	20
Total										
2002	1 681	795	2 475	2 189	1 222	768	236	975	1 139	11 479
2003	1 682	822	2 712	2 328	1 248	813	235	989	1 212	12 041
2004	1 651	844	2 747	2 380	1 283	805	236	1 022	1 228	12 194

Source: Stats SA, *General household survey* (Statistical release P0318)

★ For all values of 10 000 or lower the sample size is too small for reliable estimates.

Totals include other and unspecified energy source.



15.4 Households by type of dwelling and province, 2002-2004 (thousands)

Type of dwelling	Eastern Cape	Free State	Gauteng	KwaZulu-Natal	Limpopo	Mpumalanga	Northern Cape	North West	Western Cape	South Africa
House on a separate stand or yard or on farm										
2002	693	501	1 306	1 085	931	504	198	712	688	6 617
2003	794	537	1 404	1 148	963	542	189	715	691	6 983
2004	643	559	1 380	1 098	1 019	556	204	777	734	6 969
Traditional dwelling/hut/structure made of traditional materials										
2002	604	53	6	439	165	58	2	15	2	1 344
2003	569	48	2	534	158	57	2	26	★	1 398
2004	735	51	11	566	142	48	2	13	-	1 568
Flat/apartment in a block										
2002	43	22	242	172	2	30	8	14	125	658
2003	24	18	215	184	3	30	3	15	115	606
2004	19	26	274	191	4	26	10	20	130	699
Town/cluster/semi-detached house (simplex/duplex/triplex)										
2002	19	5	125	34	1	6	3	1	88	281
2003	39	10	162	93	1	4	12	1	145	467
2004	44	5	189	78	★	5	4	-	140	464
Unit in retirement village										
2002	3	-	3	3	2	2	-	★	2	14
2003	2	★	8	4	1	2	★	1	1	20
2004	2	-	6	2	2	1	★	★	1	14



15.4 Households by type of dwelling and province, 2002-2004 (thousands) (concluded)

Type of dwelling	Eastern Cape	Free State	Gauteng	KwaZulu-Natal	Limpopo	Mpumalanga	Northern Cape	North West	Western Cape	South Africa
House/flat/room in backyard										
2002	142	12	125	77	10	9	4	9	14	401
2003	68	9	153	45	3	5	★	5	11	299
2004	29	7	140	59	3	7	1	8	11	265
Informal dwelling/shack in backyard										
2002	25	21	179	75	6	19	5	15	54	400
2003	24	18	181	28	3	24	1	19	18	317
2004	26	74	198	52	24	37	2	18	30	460
Informal dwelling/shack not in backyard										
2002	133	97	282	173	55	87	12	105	118	1 062
2003	142	112	355	174	58	75	17	74	183	1 189
2004	110	41	331	166	26	55	9	68	110	917
Room/flatlet not in backyard										
2002	15	4	48	118	48	52	3	59	31	378
2003	18	5	54	114	57	68	8	129	37	490
2004	37	25	35	164	61	66	★	116	59	563
Total										
2002	1 681	795	2 475	2 189	1 222	768	236	975	1 139	11 479
2003	1 682	822	2 712	2 328	1 248	813	235	989	1 212	12 041
2004	1 651	844	2 747	2 380	1 283	805	236	1 022	1 228	12 194

Source: Stats SA, *General household survey* (Statistical release P0318)

★For all values of 10 000 or lower the sample size is too small for reliable estimates.

Totals include other and unspecified type of dwelling.



15.5 Households by energy source for cooking and population group, 2002-2004 (thousands)

Energy source for cooking	Black		Total
	African	Other ¹	
Electricity from mains			
2002	3 854	2 516	6 370
2003	4 314	2 624	6 937
2004	4 532	2 702	7 234
Gas			
2002	188	59	247
2003	140	46	186
2004	162	40	202
Paraffin			
2002	1 807	57	1 865
2003	1 853	68	1 921
2004	1 802	43	1 845
Wood			
2002	2 386	93	2 479
2003	2 423	82	2 506
2004	2 350	70	2 420
Coal			
2002	339	5	344
2003	327	2	329
2004	303	4	307
Animal dung			
2002	36	★	36
2003	46	2	48
2004	45	★	45
Total			
2002	8 736	2 743	11 479
2003	9 210	2 831	12 041
2004	9 325	2 869	12 194

Source: Stats SA, *General household survey* (Statistical release P0318)

¹ Other includes coloured, Indian or Asian, white and unspecified population groups. These groups are aggregated due to the small sample size.

★ For all values of 10 000 or lower the sample size is too small for reliable estimates.

Totals of energy source include other and unspecified.



15.6 Households by energy source for heating and population group, 2002-2004 (thousands)

Energy source for heating	Black African	Other ¹	Total
Electricity from mains			
2002	3 295	2 362	5 657
2003	3 635	2 460	6 095
2004	3 612	2 443	6 054
Gas			
2002	48	31	79
2003	48	30	77
2004	66	41	107
Paraffin			
2002	1 243	41	1 284
2003	1 222	40	1 262
2004	1 251	39	1 291
Wood			
2002	2 798	186	2 984
2003	2 844	172	3 016
2004	2 833	167	3 000
Coal			
2002	555	16	570
2003	550	10	560
2004	573	16	590
Total			
2002	8 736	2 743	11 479
2003	9 210	2 831	12 041
2004	9 325	2 869	12 194

Source: Stats SA, *General household survey* (Statistical release P0318)

¹ Other includes coloured, Indian or Asian, white and unspecified population groups. These groups are aggregated due to the small sample size.

Totals of energy source include other and unspecified.



15.7 Households by energy source for lighting and population group, 2002-2004 (thousands)

Energy source for heating	Black African	Other ¹	Total
Electricity from mains			
2002	6 059	2 606	8 665
2003	6 660	2 707	9 368
2004	7 005	2 768	9 773
Gas			
2002	18	2	20
2003	10	1	10
2004	17	2	19
Paraffin			
2002	657	27	684
2003	560	24	584
2004	504	17	521
Candles			
2002	1 971	100	2 071
2003	1 945	92	2 038
2004	1 762	70	1 832
Solar energy			
2002	10	2	12
2003	15	1	17
2004	16	4	20
Total			
2002	8 736	2 743	11 479
2003	9 210	2 831	12 041
2004	9 325	2 869	12 194

Source: Stats SA, *General household survey* (Statistical release P0318)

¹ Other includes coloured, Indian or Asian, white and unspecified population groups. These groups are aggregated due to the small sample size.

Totals of energy source include other and unspecified.



15.8 Households with and without a telephone facility by population group and gender of the household head, 2002 and 2003 (thousands)

Population group and gender	Whether the household has a telephone in dwelling and/or a cellphone								
	Yes			No			Total		
	2002	2003	2004	2002	2003	2004	2002	2003	2004
Black African									
Male	1 820	2 067	2 608	3 432	3 381	2 834	5 252	5 448	5 442
Female	1 103	1 321	1 706	2 378	2 441	2 177	3 480	3 762	3 883
Total	2 922	3 387	4 314	5 814	5 822	5 011	8 736	9 210	9 325
Coloured									
Male	340	369	390	307	281	259	647	650	650
Female	119	147	177	139	144	127	258	292	304
Total	459	516	567	446	426	386	905	942	953
Indian or Asian									
Male	202	215	231	28	40	34	230	254	265
Female	43	42	52	9	15	11	52	57	63
Total	245	256	283	37	54	46	282	311	328
White									
Male	1 204	1 201	1 245	59	86	60	1 263	1 286	1 305
Female	255	245	247	17	24	24	271	269	271
Total	1 459	1 446	1 492	76	110	84	1 534	1 556	1 576
All population groups									
Male	3 573	3 857	4 480	3 829	3 790	3 190	7 403	7 647	7 669
Female	1 523	1 757	2 183	2 544	2 625	2 341	4 066	4 383	4 525
Total	5 099	5 619	6 663	6 380	6 422	5 531	11 479	12 041	12 194

Source: Stats SA, *General household survey* (Statistical release P0318)

Totals include other and unspecified population group and gender.



15.9 Households by main source of water and province, 2002-2004 (thousands)

Main source of water	Eastern Cape	Free State	Gauteng	KwaZulu-Natal	Limpopo	Mpumalanga	Northern Cape	North West	Western Cape	South Africa
Piped (tap) water in dwelling										
2002	362	264	1 436	806	131	217	101	220	862	4 398
2003	343	288	1 610	820	139	246	106	214	887	4 653
2004	340	319	1 614	830	129	221	115	204	952	4 723
Piped (tap) water on site or in yard										
2002	231	388	837	425	365	325	107	336	175	3 189
2003	264	404	886	542	350	328	102	383	193	3 452
2004	254	404	915	565	366	357	96	411	183	3 551
Neighbour's tap										
2002	23	18	35	81	69	37	3	35	5	306
2003	23	16	32	82	87	36	2	31	7	317
2004	16	18	33	49	83	39	1	39	6	286
Rain-water tank on site										
2002	48	1	1	5	2	1	3	4	5	69
2003	32	★	3	7	★	4	1	-	3	51
2004	19	1	-	13	1	2	2	1	2	41
Public tap										
2002	312	88	131	330	332	116	7	243	82	1 640
2003	352	89	153	357	406	135	13	265	112	1 882
2004	404	59	151	412	382	105	8	256	75	1 851
Water-carrier/tanker										
2002	15	7	9	15	5	12	2	9	2	76
2003	10	4	6	25	4	10	1	12	2	74
2004	7	8	5	24	-	14	2	12	1	81



15.9 Households by main source of water and province, 2002-2004 (thousands) (concluded)

Main source of water	Eastern Cape	Free State	Gauteng	KwaZulu-Natal	Limpopo	Mpumalanga	Northern Cape	North West	Western Cape	South Africa
Borehole on site or communal										
2002	34	22	22	150	129	32	7	112	3	512
2003	23	15	9	139	129	23	4	64	3	408
2004	38	16	6	178	88	18	5	32	3	383
Dam/pool/stagnant water										
2002	33	3	-	30	17	6	1	2	2	93
2003	43	2	-	20	10	6	2	5	★	90
2004	30	1	-	21	8	7	2	1	1	72
Spring										
2002	208	1	-	32	8	3	-	★	★	253
2003	244	1	-	46	12	5	★	-	★	309
2004	173	1	-	35	29	3	-	1	-	242
Total										
2002	1 681	795	2 475	2 189	1 222	768	236	975	1 139	11 479
2003	1 682	822	2 712	2 328	1 248	813	235	989	1 212	12 041
2004	1 651	844	2 747	2 380	1 283	805	236	1 022	1 228	12 194

Source: Stats SA, *General household survey* (Statistical release P0318)

★ For all values of 10 000 or lower the sample size is too small for reliable estimates.

Totals of water source include other and unspecified.



15.10 Households by sanitation facility and population group of the household head, 2002-2004 (thousands)

Sanitation facility	Population group of household head				Total
	Black African	Coloured	Indian or Asian	White	
Flush or chemical toilet					
2002	3 743	760	277	1 531	6 329
2003	4 153	789	309	1 552	6 817
2004	4 242	829	325	1 573	6 978
Pit latrine with ventilation pipe					
2002	513	20	1	-	535
2003	650	17	-	★	671
2004	890	23	1	-	914
Pit latrine without ventilation					
2002	3 038	44	3	1	3 088
2003	3 070	43	2	1	3 120
2004	2 918	33	2	★	2 954
Bucket toilet					
2002	250	48	★	-	299
2003	216	45	-	★	261
2004	215	33	-	★	249
Total					
2002	8 736	905	282	1 534	11 479
2003	9 210	942	311	1 556	12 041
2004	9 325	953	328	1 576	12 194

Source: Stats SA, *General household survey* (Statistical release P0318)

★ For all values of 10 000 or lower the sample size is too small for reliable estimates.

Totals include none and unspecified.



15.11 Households by type of refuse removal by population group of the household head 2002-2004 (thousands)

Refuse removal	Population group of household head				Total
	Black African	Coloured	Indian or Asian	White	
Removed by local authority at least once a week					
2002	3 725	703	269	1 359	6 074
2003	4 236	755	300	1 371	6 677
2004	4 258	769	318	1 403	6 755
Removed by local authority less often than once a week					
2002	208	12	3	17	240
2003	121	9	5	29	164
2004	174	8	3	25	211
Removed by community members					
2002	57	17	3	9	86
2003	45	12	★	5	63
2004	33	23	-	5	60
Communal refuse dump/communal container					
2002	310	30	★	15	357
2003	288	61	-	24	373
2004	359	57	1	14	431
Own refuse dump					
2002	3 735	106	4	101	3 949
2003	4 145	82	6	109	4 348
2004	4 055	72	3	107	4 238
Total					
2002	8 736	905	282	1 534	11 479
2003	9 210	942	311	1 556	12 041
2004	9 325	953	328	1 576	12 194

Source: Stats SA, *General household survey* (Statistical release P0318)

★ For all values of 10 000 or lower the sample size is too small for reliable estimates.

Totals include other and unspecified population group of the head of the household.





Scroll down

16

Debts



16

16.1 | Liquidations and insolvencies, 1999-2003 (numbers)

| 113

16.1 Liquidations and insolvencies, 1999-2003 (numbers)

	1999	2000	2001	2002	2003
Total liquidations	4 012	3 805	4 156	3 911	4 086
Compulsory liquidations	1 844	1 515	1 284	825	857
Voluntary liquidations	2 168	2 290	2 872	3 086	3 229
Companies	1 738	1 626	1 671	1 858	2 110
Compulsory liquidations	810	659	443	339	423
Voluntary liquidations	928	967	1 228	1 519	1 687
Close corporations	2 274	2 179	2 485	2 053	1 976
Compulsory liquidations	1 034	856	841	486	434
Voluntary liquidations	1 240	1 323	1 644	1 567	1 542
Total insolvencies	6 013	4 675	3 914	2 993	2 472

Source: Stats SA, *Statistics of liquidations and insolvencies* (Statistical release P0043)

Liquidations refer to corporate institutions such as companies and close corporations, while insolvencies refer to individuals.





Scroll down

National accounts

17



17

17.1	Gross domestic product (GDP) at constant 2000 prices, 1995-2004	117
17.2	Gross domestic product (GDP) at current prices, 1995-2004	117
17.3	Annualised percentage change of the GDP at market prices, 2004	117
17.4	Gross domestic product (GDP) by industry at constant 2000 prices, 1995-2004 (R millions)	118
17.5	Gross domestic product (GDP) by industry at current prices, 1995-2004 (R millions)	119

17.1 Gross domestic product (GDP) at constant 2000 prices, 1995-2004

The GDP has been revised from 1993 and the base year has been changed from 1995 to 2000.

	1995	1996	1997	1998	1999	2000	2001	2002	2003	2004 ¹
GDP at constant 2000 market prices (R millions)	803 710	838 326	860 516	864 968	885 365	922 148	947 373	981 102	1 008 649	1 046 087
Percentage change relative to previous year	3,1	4,3	2,7	0,5	2,4	4,2	2,7	3,6	2,8	3,7

Source: Stats SA, *Gross domestic product: Annual estimates* (Statistical release P0441)

¹ All four quarters.

17.2 Gross domestic product (GDP) at current prices, 1995-2004

	1995	1996	1997	1998	1999	2000	2001	2002	2003	2004 ¹
GDP at current market prices (R millions)	548 098	617 959	685 732	742 424	813 683	922 148	1 020 008	1 164 944	1 251 469	1 374 476

Source: Stats SA, *Gross domestic product: Annual estimates* (Statistical release P0441)

¹ All four quarters.

17.3 Annualised percentage change of the GDP at market prices, 2004

	First quarter	Second quarter	Third quarter	Fourth quarter
%	3,8	4,4	5,7	4,0

Source: Stats SA, *Gross domestic product: Annual estimates* (Statistical release P0441)



17.4 Gross domestic product (GDP) by industry at constant 2000 prices, 1995-2004 (R millions)

	1995	1996	1997	1998	1999	2000	2001	2002	2003	2004 ¹
Agriculture, forestry and fishing	20 850	25 850	26 070	24 686	26 213	27 451	26 558	28 292	26 604	26 926
Mining and quarrying	64 567	64 034	65 100	65 011	64 116	63 391	63 325	63 927	66 661	69 436
Manufacturing	140 877	142 824	146 692	146 336	147 179	159 106	164 131	168 729	167 261	171 563
Electricity, gas and water	20 592	22 814	23 699	22 206	22 097	22 788	21 956	22 010	22 091	22 521
Construction	20 401	20 813	21 529	20 260	19 985	21 114	22 154	23 441	24 655	26 217
Wholesale and retail trade; hotels and restaurants	99 994	103 682	104 147	105 518	113 553	122 705	125 017	127 870	136 479	145 392
Transport, storage and communication	58 923	62 538	67 312	70 983	74 705	80 873	85 646	93 390	98 288	103 695
Finance, real estate and business services	125 955	134 502	140 832	144 074	151 437	156 253	169 015	179 569	186 970	194 094
General government services	132 945	135 513	136 582	135 560	134 403	133 158	131 914	132 570	133 851	135 502
Personal services	43 298	44 449	44 434	47 194	49 020	51 382	52 537	53 852	56 483	58 673
All industries at basic prices	725 682	756 515	776 398	781 828	802 708	838 221	862 253	893 650	919 343	954 019
Taxes less subsidies on products	77 960	81 974	84 117	83 140	82 657	83 930	85 120	87 452	89 306	92 068
GDP at market prices	803 671	838 286	860 515	864 968	885 365	922 151	947 373	981 102	1 008 649	1 046 087

Source: Stats SA, *Gross domestic product: Annual estimates* (Statistical release P0441)

¹ All four quarters.



17.5 Gross domestic product (GDP) by industry at current prices, 1995-2004 (R millions)

	1995	1996	1997	1998	1999	2000	2001	2002	2003	2004 ¹
Agriculture, forestry and fishing	19 317	23 721	25 140	25 434	26 179	27 451	32 588	44 179	42 007	41 323
Mining and quarrying	34 830	38 768	40 524	45 879	52 173	63 391	77 214	92 113	84 128	87 058
Manufacturing	106 179	114 126	124 603	130 897	137 035	159 107	176 907	209 605	221 815	246 467
Electricity and water	17 409	18 602	19 929	20 461	21 200	22 789	23 023	25 232	26 926	28 239
Construction	15 774	17 631	19 829	19 953	20 240	21 114	22 416	24 119	26 674	29 190
Wholesale and retail trade; hotels and restaurants	71 768	79 463	85 859	90 936	103 193	122 702	130 387	143 095	157 827	172 667
Transport, storage and communication	44 538	51 787	57 874	63 606	70 071	80 872	89 511	100 034	109 864	120 095
Finance, real estate and business services	82 162	94 122	110 488	122 227	140 673	156 252	177 531	204 590	228 075	247 514
General government services	80 831	96 214	107 744	116 495	124 107	133 158	142 325	154 191	167 262	180 976
Personal services	27 545	31 040	35 177	38 986	44 002	51 382	56 313	62 631	70 007	76 880
All industries at basic prices	500 353	565 475	627 168	674 874	738 873	838 218	928 216	1 059 788	1 134 585	1 230 409
Taxes less subsidies on products	47 746	52 484	58 563	67 550	74 810	83 930	91 792	105 156	116 883	144 067
GDP at market prices	548 098	617 959	685 732	742 424	813 683	922 148	1 020 008	1 164 944	1 251 469	1 374 476

Source: Stats SA, *Gross domestic product: Annual estimates* (Statistical release P0441)

¹ All four quarters.





Scroll down

Government finances

18



18

18.1	Actual capital expenditure of the public sector, 1999-2003 (R billions)	121
18.2	Expenditure by universities and technikons, and type of expenditure, 1999-2003 (R millions)	122
18.3	The expenditure (functionally classified) of the provincial governments for the financial years 1998/99-2002/03, social security and welfare services (R thousands)	123

18.1 Actual capital expenditure of the public sector, 1999-2003 (R billions)

	Expenditure on new construction works					Expenditure on machinery and equipment				
	1999	2000	2001	2002	2003	1999	2000	2001	2002	2003
Type of public sector institution										
National government	1,19	1,51	1,71	1,91	3,48	0,14	0,20	0,10	1,34	2,00
Provincial government	2,06	2,33	2,48	3,22	4,96	0,11	0,36	0,26	0,42	0,92
Extra-budgetary funds	0,10	0,07	0,14	0,59	0,56	0,74
District municipalities	1,08	1,83	5,14	4,48	6,90	0,27	0,35	0,89	0,60	0,99
Local municipalities	5,02	5,16	3,99	3,05	5,32	0,62	0,54	0,36	0,31	0,43
Universities and technikons	0,55	0,35	0,36	0,19	0,56	0,43	0,35	0,57	0,57	0,79
Public corporations	6,23	5,88	4,66	6,28	13,78	16,73	10,87	14,44	12,17	7,91
Total	16,13	17,06	18,44	19,20	35,14	18,30	12,67	17,21	15,97	13,78
	Expenditure on land and existing buildings					Total capital expenditure				
	1999	2000	2001	2002	2003	1999	2000	2001	2002	2003
Type of public sector institution										
National government	0,02	0,02	0,15	0,20	0,05	1,35	1,73	1,96	3,45	5,53
Provincial government	0,01	0,01	0,03	0,14	0,50	2,18	2,70	2,77	3,78	6,38
Extra-budgetary funds	0,20	0,14	0,15	0,89	0,77	1,03
District municipalities	0,07	0,07	0,21	0,05	0,24	1,42	2,25	6,24	5,13	8,13
Local municipalities	0,07	0,22	0,16	0,14	0,16	5,71	5,92	4,51	3,50	5,91
Universities and technikons	0,02	0,00	0,06	0,12	0,19	1,00	0,70	0,99	0,88	1,54
Public corporations	0,13	0,19	0,11	0,66	0,43	23,09	16,94	19,21	19,11	22,12
Total	0,32	0,51	0,92	1,45	1,72	34,75	30,24	36,57	36,62	50,64

Source: Stats SA, *Actual and expected capital expenditure of the public sector* (Statistical release P9101.1)

18.2 Expenditure by universities and technikons, and type of expenditure, 1999-2003 (R millions)

Year	Current expenditure			Capital expenditure			Total expenditure ¹		
	Univer- sities	Tech- nikons	Both	Univer- sities	Tech- nikons	Both	Univer- sities	Tech- nikons	Both
1999	8 684,9	2 717,3	11 402,2	876,2	376,6	1 252,8	9 561,1	3 093,9	12 655,1
2000	9 670,4	3 124,4	12 794,9	802,5	276,9	1 079,4	10 472,9	3 401,4	13 874,4
2001	10 789,2	3 446,2	14 235,4	848,4	344,1	1 192,5	11 637,6	3 790,3	15 427,9
2002	12 223,9	3 851,5	16 075,4	1 096,9	267,7	1 364,6	13 320,8	4 119,2	17 440,0
2003	14 545,2	4 071,4	18 616,6	1 337,5	289,7	1 627,2	15 882,7	4 361,2	20 244,0

Source: Stats SA, *Financial statistics of universities and technikons* (Statistical release P9103)

¹ Total expenditure includes amount for research undertaken.



18.3 The expenditure (functionally classified) of the provincial governments for the financial years 1998/99-2002/03, social security and welfare services (R thousands)

Provincial government	General services	Public order and safety	Education	Health	Social security and welfare	Housing and community development	Other	Economic services	Unallocable	Total
Eastern Cape										
1998/99	255 186	39 977	6 642 622	2 993 552	3 634 353	242 184	212 750	793 381	423 661	15 237 666
1999/2000	263 681	59 577	6 665 650	3 448 033	3 856 354	197 325	275 552	792 532	407 729	15 966 433
2000/01	712 214	55 717	7 253 651	3 744 705	4 066 861	635 426	288 123	966 623	438 841	18 162 161
2001/02	395 352	69 523	7 940 155	3 816 189	4 663 952	483 473	334 903	1 554 752	336 306	19 594 605
2002/03	458 978	81 031	9 454 535	4 187 485	6 426 332	713 163	405 109	2 580 274	411 541	24 718 448
Free State										
1998/99	126 496	127 258	2 646 285	1 776 342	1 167 968	324 833	98 971	401 127	220 681	6 889 961
1999/2000	159 622	65 015	2 822 823	1 590 171	1 163 679	114 950	127 810	537 498	83 565	6 665 133
2000/01	145 827	139 961	3 084 448	1 715 096	1 261 180	389 332	94 408	325 337	206 725	7 362 314
2001/02	200 125	158 110	3 243 109	1 890 847	1 483 062	340 583	188 578	498 734	218 957	8 222 105
2002/03	236 013	85 110	3 598 024	2 123 040	2 100 020	353 002	260 738	616 533	338 053	9 710 533
Gauteng										
1998/99	293 290	200 177	6 081 066	5 739 384	2 307 003	164 702	124 994	507 970	190 036	15 608 622
1999/2000	280 495	185 829	6 352 368	5 795 786	2 441 752	124 322	147 496	555 208	210 215	16 093 471
2000/01	323 354	275 890	6 872 717	6 113 693	2 683 057	759 988	174 192	715 883	272 762	18 191 536
2001/02	545 042	194 411	7 351 756	6 754 314	3 042 488	1 120 478	166 997	852 901	267 959	20 296 346
2002/03	793 923	280 604	8 233 527	7 520 441	3 955 439	1 591 957	346 915	1 222 980	527 733	24 473 519
KwaZulu-Natal										
1998/99	493 828	113 317	7 197 230	4 833 928	3 989 939	526 969	222 250	787 276	254 547	18 419 284
1999/2000	441 278	130 747	7 376 801	5 041 242	4 059 806	291 040	297 720	1 025 017	254 578	18 918 229
2000/01	469 660	166 128	8 280 764	5 687 022	4 349 709	993 858	307 307	1 256 548	299 389	21 810 385
2001/02	457 303	165 755	9 483 643	6 735 402	5 049 224	1 113 398	360 347	1 515 643	299 080	25 179 795
2002/03	511 285	210 883	10 631 506	7 202 035	6 873 864	1 202 943	383 461	1 670 486	292 063	28 978 526



18.3 The expenditure (functionally classified) of the provincial governments for the financial years 1998/99-2002/03, social security and welfare services (R thousands) (continued)

Provincial government	General services	Public order and safety	Education	Health	Social security and welfare	Housing and community development	Other	Economic services	Unallocable	Total
Limpopo										
1998/99	220 116	46 851	5 851 519	1 993 692	2 031 193	259 217	125 793	951 494	414 018	11 893 893
1999/2000	316 518	60 012	5 950 409	2 125 880	2 328 768	173 579	152 794	1 011 523	392 080	12 511 563
2000/01	430 986	74 206	6 530 621	2 404 870	2 641 693	420 957	153 973	1 442 897	427 089	14 527 292
2001/02	633 190	120 918	6 816 321	2 519 895	2 968 775	574 276	224 686	1 428 402	368 229	15 654 692
2002/03	634 900	168 099	7 509 960	3 001 815	4 289 558	618 879	219 084	1 852 159	467 447	18 761 901
Mpumalanga										
1998/99	311 551	60 413	2 644 348	1 061 597	1 091 037	77 738	114 372	545 381	103 381	6 009 752
1999/2000	471 560	71 051	2 864 325	1 114 822	1 157 251	64 498	117 523	466 670	100 529	6 428 229
2000/01	415 598	66 318	3 016 611	1 118 012	1 320 802	344 781	61 798	566 818	106 392	7 017 130
2001/02	474 110	117 795	3 354 281	1 433 458	1 525 110	436 053	123 712	823 896	137 240	8 425 655
2002/03	290 491	142 878	3 886 055	1 688 223	2 040 077	351 021	167 105	1 009 794	166 391	9 742 035
Northern Cape										
1998/99	86 490	23 884	903 747	383 120	668 967	37 046	30 232	178 492	16 976	2 328 954
1999/2000	106 048	17 118	920 855	419 445	695 661	41 378	32 478	185 316	14 706	2 433 005
2000/01	131 623	25 233	1 000 578	458 653	658 499	137 374	37 092	202 540	3 525	2 655 117
2001/02	178 969	37 932	1 051 093	512 560	705 919	148 473	50 616	246 101	153	2 931 816
2002/03	186 602	46 664	1 193 991	590 796	910 804	150 708	66 289	271 248	51 804	3 468 906



18.3 The expenditure (functionally classified) of the provincial governments for the financial years 1998/99-2002/03, social security and welfare services (R thousands) (concluded)

Provincial government	General services	Public order and safety	Education	Health	Social security and welfare	Housing and community development	Other	Economic services	Unallocable	Total
North West										
1998/99	196 799	67 993	3 220 126	1 317 619	1 299 073	295 411	123 541	803 172	351 576	7 675 310
1999/2000	263 901	71 608	3 435 348	1 361 221	1 406 660	264 699	185 486	724 487	346 799	8 060 209
2000/01	252 380	93 480	3 732 513	1 533 756	1 697 367	492 772	162 229	909 679	342 927	9 217 103
2001/02 ¹	338 991	114 506	4 000 061	1 671 179	1 972 131	403 320	238 358	876 846	285 787	9 901 179
2002/03	403 746	151 148	4 413 001	1 976 930	2 622 300	412 652	175 453	1 017 009	276 921	11 449 160
Western Cape										
1998/99	201 977	36 170	3 898 803	3 041 331	2 219 054	107 170	133 847	447 752	96 332	10 182 436
1999/2000	297 813	47 334	3 909 577	3 137 235	2 236 943	75 824	146 930	422 048	122 877	10 396 581
2000/01	325 817	53 883	4 187 976	3 417 429	2 227 712	398 584	160 220	669 311	72 800	11 513 732
2001/02	305 788	103 671	4 518 121	3 689 869	2 397 568	417 868	178 653	746 228	159 091	12 516 857
2002/03	359 936	118 995	4 946 294	3 947 712	3 151 403	483 592	209 173	1 080 634	211 260	14 508 999
Total										
1998/99	2 185 733	716 040	39 085 746	23 140 565	18 408 587	2 035 270	1 186 750	5 416 045	2 071 142	94 245 878
1999/2000	2 600 916	708 291	40 298 156	24 033 835	19 346 874	1 347 615	1 483 789	5 720 299	1 933 078	97 472 853
2000/01	3 207 459	950 816	43 959 879	26 193 236	20 906 880	4 573 072	1 439 342	7 055 636	2 170 450	110 456 770
2001/02 ¹	3 528 870	1 082 621	47 758 540	29 023 713	23 808 229	5 037 922	1 866 850	8 543 503	2 072 802	122 723 050
2002/03	3 875 874	1 285 412	53 866 893	32 238 477	32 369 797	5 877 917	2 233 327	11 321 117	2 743 213	145 812 027

Source: Stats SA, *Provincial government expenditure* (Statistical release P9120)

¹ 48 581 moved from North West housing to 'General services'. This was changed in 2004 for the 2002/03 survey.

