



**stats sa**

Department:  
Statistics South Africa  
**REPUBLIC OF SOUTH AFRICA**

## Building statistics, 2022

Embargoed until:  
28 August 2024  
13:00

Report No. 50-11-01 (2022)

Dipalopalo tsa Aforikaborwa • Dipalopalo tsa Aforika Borwa • Ezazibalo zaseNingizimu Afrika • Tshitatistika Afrika Tshipembe • Tinhlayo Afrika-Dzonga  
Statistieke Suid-Afrika • Dipalopalo tsa Aforika Borwa • Telubalo zaseNingizimu Afrika • EzeeNkcukacha maNani zoMzantsi Afrika • Iimibalobalo zeSewula Afrika

**IMPROVING LIVES THROUGH DATA ECOSYSTEMS**

Statistics South Africa

Risenga Maluleke  
Statistician-General



Building statistics, 2022 / Statistics South Africa

Published by Statistics South Africa, Private Bag X44, Pretoria 0001

© Statistics South Africa, 2024

Users may apply or process this data, provided Statistics South Africa (Stats SA) is acknowledged as the original source of the data; that it is specified that the application and/or analysis is the result of the user's independent processing of the data; and that neither the basic data nor any reprocessed version or application thereof may be sold or offered for sale in any form whatsoever without prior permission from Stats SA.

Stats SA Library Cataloguing-in-Publication (CIP) Data

Building statistics, 2022 / Statistics South Africa. Pretoria: Statistics South Africa, 2024

**Report No. 50-11-01 (2022)**

**65 pages**

**ISBN 978-1-77997-136-4**

A complete set of Stats SA publications is available at Stats SA Library and the following libraries:

National Library of South Africa, Pretoria Division  
National Library of South Africa, Cape Town Division  
Library of Parliament, Cape Town  
Bloemfontein Public Library  
Natal Society Library, Pietermaritzburg  
Johannesburg Public Library

Eastern Cape Library Services, Qonce  
Central Regional Library, Polokwane  
Central Reference Library, Mbombela  
Central Reference Collection, Kimberley  
Central Reference Library, Mmabatho

This report is available on the Stats SA website: [www.statssa.gov.za](http://www.statssa.gov.za).

**For technical enquiries, please contact:**

**Kurt Roach / Joyce Essel-Mensah**

Tel.: (012) 310 8211 / 082 888 2374

Email: [kurtr@statssa.gov.za](mailto:kurtr@statssa.gov.za) / [joycee@statssa.gov.za](mailto:joycee@statssa.gov.za)

**Contents**

**Introduction**..... **iii**

**Purpose of the surveys** ..... **iii**

**Key findings for the monthly and annual surveys** ..... **iv**

**List of detailed tables** ..... **vii**

List of municipalities covered in the monthly and annual surveys ..... viii

Part 1 – Municipal reporting of buildings completed aggregated to provincial level: monthly survey

Table 1 to Table 6 ..... 1

Part 2 – Municipal reporting of buildings completed aggregated to provincial level: monthly and annual surveys

Table 7 to Table 12 ..... 15

Municipalities covered in the monthly and annual surveys by province

Table 13 to Table 21 ..... 29

**Explanatory notes**..... **49**

**Glossary** ..... **52**

## Introduction

Statistics South Africa (Stats SA) conducts a monthly survey of metropolitan municipalities and large local municipalities on building plans passed and buildings completed for the private sector. An annual survey of the remaining municipalities is conducted regarding buildings completed. The following information is presented in this report:

- In Part 1, Tables 1 to 6, information is published for the monthly survey on buildings completed by type of building at provincial level for 2020, 2021 and 2022.
- In Part 2, Tables 7 to 12, information is published for the monthly and annual surveys on buildings completed by type of building at provincial level for 2020, 2021 and 2022.
- Municipal reporting for buildings completed is available in an Excel format from 2014 to 2022. The Excel files are available from Stats SA's website on the publication page for Report-50-11-01 – Building statistics, under 'Additional downloads' (see the link below).

[http://www.statssa.gov.za/?page\\_id=1854&PPN=Report-50-11-01](http://www.statssa.gov.za/?page_id=1854&PPN=Report-50-11-01).

Building plans passed and buildings reported as completed for 2022 (monthly survey only) were published in the annual statistical release P5041.3 – *Selected building statistics of the private sector as reported by local government institutions*, 2023 on 26 June 2024 and can be accessed on Stats SA's website, [www.statssa.gov.za](http://www.statssa.gov.za).

## Purpose of the surveys

The results of these surveys are used in monitoring the state of the economy and the formulation of economic policy. The results are important inputs for estimating gross domestic product (GDP) and are extensively used by the private sector.

**Table A – Value of buildings reported as completed to municipalities**

Year	Monthly survey	Monthly and annual surveys	% contribution of monthly survey to total of monthly and annual surveys
	R million	R million	
2020	49 101,5	55 856,7	87,9
2021	59 321,1	66 668,5	89,0
2022	67 838,6	78 506,7	86,4

The percentage contribution of the total value of buildings completed as reported in the monthly survey compared with the value of monthly and annual surveys decreased by 2,6 percentage points from 89,0% in 2021 to 86,4% in 2022 – see Table A.

### Key findings for the monthly and annual surveys

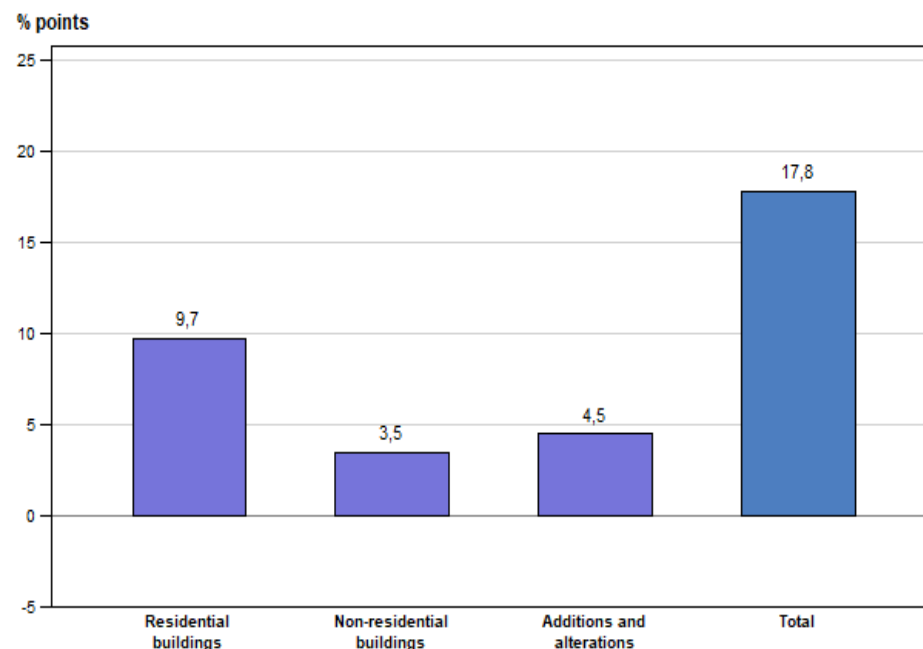
**Table B – Selected key figures regarding buildings reported as completed at current prices**

Type of building	2021	2022	% contribution to the total value of buildings completed during 2021	% change in the value of buildings completed between 2021 and 2022	Contribution (% points) <sup>1</sup> to the % change between 2021 and 2022	Difference in the value of buildings completed between 2021 and 2022
	R million	R million				R million
<b>Residential buildings</b>	<b>37 242,2</b>	<b>43 706,0</b>	<b>55,9</b>	<b>17,4</b>	<b>9,7</b>	<b>6 463,8</b>
Dwelling-houses	23 624,8	29 651,5	35,4	25,5	9,0	6 026,8
Flats and townhouses	13 001,3	13 117,6	19,5	0,9	0,2	116,3
Other residential buildings	616,0	936,8	0,9	52,1	0,5	320,8
<b>Non-residential buildings</b>	<b>14 558,8</b>	<b>16 900,1</b>	<b>21,8</b>	<b>16,1</b>	<b>3,5</b>	<b>2 341,3</b>
Office and banking space	1 822,9	1 289,5	2,7	-29,3	-0,8	-533,4
Shopping space	4 272,2	4 364,5	6,4	2,2	0,1	92,4
Industrial space	6 951,1	8 716,7	10,4	25,4	2,6	1 765,6
Other non-residential buildings	1 512,7	2 529,4	2,3	67,2	1,5	1 016,8
<b>Additions and alterations</b>	<b>14 867,5</b>	<b>17 900,6</b>	<b>22,3</b>	<b>20,4</b>	<b>4,5</b>	<b>3 033,1</b>
<b>Total<sup>2</sup></b>	<b>66 668,5</b>	<b>78 506,7</b>	<b>100,0</b>	<b>17,8</b>	<b>17,8</b>	<b>11 838,3</b>

<sup>1</sup> The contribution (percentage points) is calculated by multiplying the percentage change of the type of building between 2021 and 2022 by the percentage contribution of the corresponding type of building to the total value of buildings completed during 2021, divided by 100.  
<sup>2</sup> Figures have been rounded off.

As indicated in Table B, the value of buildings reported as completed to municipalities in the monthly and annual surveys increased by 17,8% from R66 668,5 million in 2021 to R78 506,7 million in 2022. Increases were reported for additions and alterations (20,4% or R3 033,1 million), residential buildings (17,4% or R6 463,8 million) and non-residential buildings (16,1% or R2 341,3 million).

**Figure 1 – Contribution (percentage points) of type of building to the percentage change in the total value of buildings reported as completed between 2021 and 2022**



As indicated in Figure 1, all three types of buildings made positive contributions to the year-on-year growth rate of 17,8% in 2022: residential buildings (contributing 9,7 percentage points), additions and alterations (contributing 4,5 percentage points) and non-residential buildings (contributing 3,5 percentage points).

**Table C – Buildings reported as completed at current prices by province: 2021 vs 2022**

Province	2021	2022	% contribution to the total value of buildings completed during 2021	% change between 2021 and 2022	Contribution (% points) <sup>1</sup> to the % change in the value of buildings completed between 2021 and 2022	Difference in the value of buildings completed between 2021 and 2022
	R million	R million				
Western Cape	25 460,7	30 939,9	38,2	21,5	8,2	5 479,2
Eastern Cape	4 151,6	4 392,4	6,2	5,8	0,4	240,9
Northern Cape	1 083,2	1 466,8	1,6	35,4	0,6	383,6
Free State	882,8	825,6	1,3	-6,5	-0,1	-57,3
KwaZulu-Natal	8 888,9	11 503,6	13,3	29,4	3,9	2 614,8
North West	2 484,8	2 323,1	3,7	-6,5	-0,2	-161,8
Gauteng	20 414,1	22 174,2	30,6	8,6	2,6	1 760,2
Mpumalanga	1 682,0	1 892,4	2,5	12,5	0,3	210,4
Limpopo	1 620,4	2 988,7	2,4	84,4	2,0	1 368,3
<b>Total<sup>2</sup></b>	<b>66 668,5</b>	<b>78 506,7</b>	<b>100,0</b>	<b>17,8</b>	<b>17,8</b>	<b>11 838,3</b>

<sup>1</sup> The contribution (percentage points) is calculated by multiplying the percentage change of each province between 2021 and 2022 by the percentage contribution of the corresponding province to the total value of buildings completed during 2021, divided by 100.

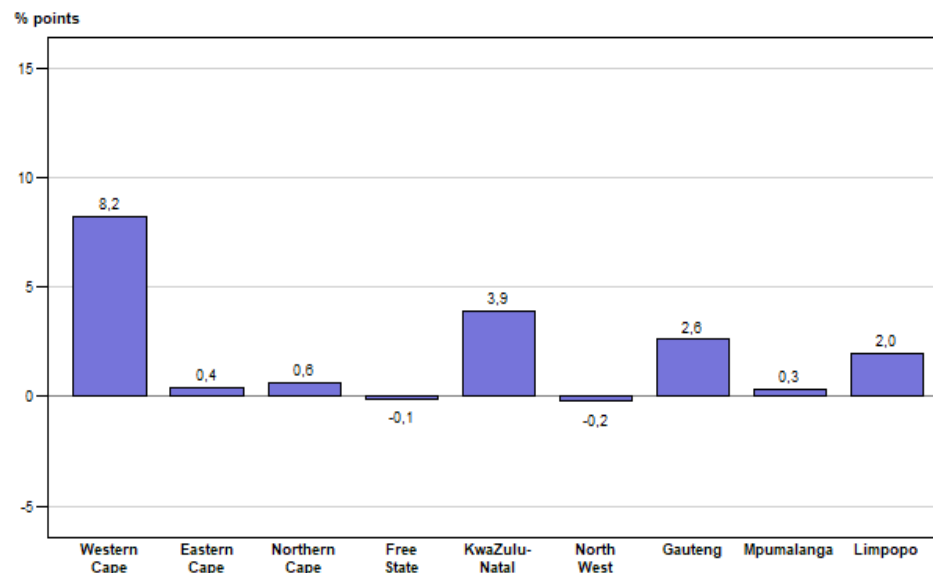
<sup>2</sup> Figures have been rounded off.

Table C and Figure 2 reflect that the largest provincial contributors to the increase of 17,8% between 2021 and 2022 were Western Cape (contributing 8,2 percentage points or R5 479,2 million), KwaZulu-Natal (contributing 3,9 percentage points or R2 614,8 million), Gauteng (contributing 2,6 percentage points or R1 760,2 million) and Limpopo (contributing 2,0 percentage points or R1 368,3 million).

During 2022, Western Cape experienced year-on-year increases in additions and alterations (37,7% or R2 964,6 million) and residential buildings (20,3% or R2 619,2 million). A decrease was reported for non-residential buildings (-2,2% or -R104,5 million).

Large increases in non-residential buildings were reported for Limpopo (255,3% or R673,9 million) and Northern Cape (164,5% or R190,1 million) – see Table 7.

**Figure 2 – Provincial contribution (percentage points) to the percentage change in the total value of buildings reported as completed between 2021 and 2022**



Buildings reported as completed in Western Cape were to a large extent dominated by data reported for City of Cape Town, contributing 68,8% or R21 284,3 million to the total of R30 939,9 million reported for this province – see Table D.

The largest contributor in all three major building categories reported as completed in Western Cape was City of Cape Town, with additions and alterations contributing 82,9% (R8 973,6 million), non-residential buildings contributing 79,5% (R3 646,5 million) and residential buildings contributing 55,8% (R8 664,2 million).

eThekweni was the largest contributor to additions and alterations (contributing 86,8% or R1 428,0 million), non-residential buildings (contributing 73,7% or R2 354,6 million) and residential buildings (contributing 45,3% or R3 022,8 million) in KwaZulu-Natal.

**Table D – The largest municipal contributors to the value of buildings reported as completed for 2022 by province**

Province/Municipality	Value of buildings completed at provincial/municipal level R million	Municipal % contribution to the value of buildings completed at provincial level
<b>Western Cape</b>	<b>30 939,9</b>	
City of Cape Town	21 284,3	68,8
Mossel Bay	1 137,0	3,7
George	1 082,5	3,5
Bergrivier	882,0	2,9
Hessequa	838,6	2,7
<b>Gauteng</b>	<b>22 174,2</b>	
Ekurhuleni	8 035,1	36,2
City of Tshwane	7 411,5	33,4
City of Johannesburg	4 736,4	21,4
Emfuleni	691,8	3,1
Midvaal	690,4	3,1
<b>KwaZulu-Natal</b>	<b>11 503,6</b>	
eThekweni	6 805,3	59,2
KwaDukuza	1 655,2	14,4
uMngeni	766,4	6,7
Okhahlamba	276,8	2,4
uMhlabuyalingana	249,0	2,2
<b>Eastern Cape</b>	<b>4 392,4</b>	
Nelson Mandela Bay	1 144,3	26,1
Buffalo City	1 142,9	26,0
Blue Crane Route	609,2	13,9
Kouga	557,2	12,7
Great Kei	146,8	3,3
<b>Limpopo</b>	<b>2 988,7</b>	
Polokwane	784,3	26,2
Thulamela	618,4	20,7
Elias Motsoaledi	279,6	9,4
Fetakgomo Tubatse	189,9	6,4
Greater Letaba	189,3	6,3

**Table D – The largest municipal contributors to the value of buildings reported as completed for 2022 by province (concluded)**

Province/Municipality	Value of buildings completed at provincial/municipal level R million	Municipal % contribution to the value of buildings completed at provincial level
<b>North West</b>	<b>2 323,1</b>	
Madibeng	877,7	37,8
Rustenburg	437,2	18,8
Tlokwe City Council	363,8	15,7
City of Matlosana	308,9	13,3
Mahikeng	189,7	8,2
<b>Mpumalanga</b>	<b>1 892,4</b>	
City of Mbombela	662,8	35,0
Emalahleni	397,0	21,0
Bushbuckridge	198,0	10,5
Emakhazeni	92,4	4,9
Lekwa	92,1	4,9
<b>Northern Cape</b>	<b>1 466,8</b>	
Dawid Kruiper	767,3	52,3
Kareeberg	193,0	13,2
Gamagara	160,4	10,9
Nama Khoi	93,4	6,4
Khâi-Ma	42,0	2,9
<b>Free State</b>	<b>825,6</b>	
Mangaung	228,8	27,7
Dihlabeng	140,0	17,0
Tswelopele	80,1	9,7
Matjhabeng	69,8	8,5
Nala	56,8	6,9

  
**Risenga Maluleke**  
**Statistician-General**

## LIST OF DETAILED TABLES

### PART 1 – MUNICIPAL REPORTING OF BUILDINGS COMPLETED AGGREGATED TO PROVINCIAL LEVEL: MONTHLY SURVEY

Table 1	- Number, square metres and value of residential buildings, non-residential buildings and additions and alterations reported as completed to municipalities by province.....	1
Table 2	- Number, square metres and value of residential buildings reported as completed to municipalities: dwelling-houses, flats and townhouses and other residential buildings by province.....	3
Table 3	- Number, square metres and value of dwelling-houses reported as completed to municipalities by size of dwelling-house and province .....	5
Table 4	- Number, square metres and value of flats and townhouses reported as completed to municipalities by province.....	7
Table 5.1	- Number, square metres and value of non-residential buildings reported as completed to municipalities by province: office and banking space, shopping space and industrial and warehouse space .....	9
Table 5.2	- Number, square metres and value of non-residential buildings reported as completed to municipalities by province: schools, nursery schools, crèches, hospitals, churches, sport clubs, recreation clubs and all other space .....	11
Table 6	- Number, square metres and value of additions and alterations reported as completed to municipalities by province .....	13

### PART 2 – MUNICIPAL REPORTING OF BUILDINGS COMPLETED AGGREGATED TO PROVINCIAL LEVEL: MONTHLY AND ANNUAL SURVEYS

Table 7	- Number, square metres and value of residential buildings, non-residential buildings and additions and alterations reported as completed to municipalities by province.....	15
Table 8	- Number, square metres and value of residential buildings reported as completed to municipalities: dwelling-houses, flats and townhouses and other residential buildings by province.....	17
Table 9	- Number, square metres and value of dwelling-houses reported as completed to municipalities by size of dwelling-house and province .....	19
Table 10	- Number, square metres and value of flats and townhouses reported as completed to municipalities by province.....	21
Table 11.1	- Number, square metres and value of non-residential buildings reported as completed to municipalities by province: office and banking space, shopping space and industrial and warehouse space .....	23
Table 11.2	- Number, square metres and value of non-residential buildings reported as completed to municipalities by province: schools, nursery schools, crèches, hospitals, churches, sport clubs, recreation clubs and all other space .....	25
Table 12	- Number, square metres and value of additions and alterations reported as completed to municipalities by province .....	27



**MUNICIPALITIES COVERED IN THE MONTHLY AND ANNUAL SURVEYS BY PROVINCE**

Table 13	- Municipalities covered in the monthly and annual surveys by province: Western Cape .....	29
Table 14	- Municipalities covered in the monthly and annual surveys by province: Eastern Cape .....	31
Table 15	- Municipalities covered in the monthly and annual surveys by province: Northern Cape .....	34
Table 16	- Municipalities covered in the monthly and annual surveys by province: Free State .....	36
Table 17	- Municipalities covered in the monthly and annual surveys by province: KwaZulu-Natal .....	38
Table 18	- Municipalities covered in the monthly and annual surveys by province: North West .....	42
Table 19	- Municipalities covered in the monthly and annual surveys by province: Gauteng .....	44
Table 20	- Municipalities covered in the monthly and annual surveys by province: Mpumalanga .....	45
Table 21	- Municipalities covered in the monthly and annual surveys by province: Limpopo .....	47

**Part 1**  
**Municipal reporting of buildings completed**  
**aggregated to provincial level:**  
**monthly survey**

**Table 1 – Number, square metres and value of residential buildings, non-residential buildings and additions and alterations reported as completed by province**

Municipal reporting aggregated to provincial level by year		Residential buildings		Non-residential buildings			Additions and alterations			Buildings reported as completed to municipalities	
		Total square metres	Total value R'000	Number of buildings	Total square metres	Total value R'000	Number of plans	Total square metres	Total value R'000	Total square metres	Total value R'000
Western Cape	2020	1 113 169	8 013 370	161	404 038	2 959 416	5 976	616 278	5 410 782	2 133 485	16 383 568
	2021	1 541 173	10 981 121	257	574 551	4 223 793	8 789	874 562	7 191 113	2 990 286	22 396 027
	2022	1 812 056	13 063 994	307	565 636	4 134 071	13 271	1 252 091	9 909 586	3 629 783	27 107 651
Eastern Cape	2020	90 492	640 512	19	87 420	581 217	1 163	97 532	691 839	275 444	1 913 568
	2021	163 710	1 213 225	33	150 939	1 083 229	1 399	120 033	918 108	434 682	3 214 562
	2022	169 408	1 343 392	34	80 781	630 293	1 082	125 670	1 013 039	375 859	2 986 724
Northern Cape	2020	30 981	261 692	21	20 413	171 249	300	28 298	244 386	79 692	677 327
	2021	34 272	288 503	12	6 867	57 201	333	36 729	310 727	77 868	656 431
	2022	22 350	194 245	12	24 776	205 927	433	41 627	367 168	88 753	767 340
Free State	2020	41 675	314 297	12	25 748	204 935	126	12 533	99 120	79 956	618 352
	2021	56 999	447 099	12	11 706	91 790	235	20 294	137 445	88 999	676 334
	2022	45 116	363 199	6	3 607	27 521	296	23 163	166 368	71 886	557 088
KwaZulu-Natal	2020	352 098	3 727 797	71	480 266	3 098 939	977	114 543	1 319 329	946 907	8 146 065
	2021	360 066	3 724 992	125	256 830	2 056 216	1 239	170 917	1 964 054	787 813	7 745 262
	2022	503 970	5 420 134	93	394 037	2 817 592	1 086	126 062	1 533 192	1 024 069	9 770 918
North West	2020	153 470	1 001 986	22	36 246	228 759	233	27 827	204 936	217 543	1 435 681
	2021	181 433	1 188 744	24	137 350	822 565	312	40 788	299 236	359 571	2 310 545
	2022	211 074	1 441 953	42	88 457	618 438	206	21 082	162 600	320 613	2 222 991
Gauteng	2020	1 275 440	10 419 070	121	696 376	5 561 666	1 427	216 367	1 844 269	2 188 183	17 825 005
	2021	1 539 522	13 578 793	110	602 787	4 400 870	1 948	295 502	2 434 415	2 437 811	20 414 078
	2022	1 485 659	13 756 499	114	799 143	5 900 973	1 847	283 429	2 516 764	2 568 231	22 174 236
Mpumalanga	2020	96 568	663 492	21	47 833	358 728	298	24 938	184 984	169 339	1 207 204
	2021	104 988	793 890	18	29 203	193 191	172	16 162	155 407	150 353	1 142 488
	2022	117 979	868 377	14	24 551	200 410	143	12 827	109 142	155 357	1 177 929

**Table 1 – Number, square metres and value of residential buildings, non-residential buildings and additions and alterations reported as completed by province (concluded)**

Municipal reporting aggregated to provincial level by year		Residential buildings		Non-residential buildings			Additions and alterations			Buildings reported as completed to municipalities	
		Total square metres	Total value R'000	Number of buildings	Total square metres	Total value R'000	Number of plans	Total square metres	Total value R'000	Total square metres	Total value R'000
Limpopo	2020	88 583	528 188	19	50 264	298 014	69	10 019	68 518	148 866	894 720
	2021	103 916	642 534	14	8 660	51 762	86	8 627	71 047	121 203	765 343
	2022	112 156	746 359	21	34 501	226 607	85	13 708	100 731	160 365	1 073 697
South Africa	2020	3 242 476	25 570 404	467	1 848 604	13 462 923	10 569	1 148 335	10 068 163	6 239 415	49 101 490
	2021	4 086 079	32 858 901	605	1 778 893	12 980 617	14 513	1 583 614	13 481 552	7 448 586	59 321 070
	2022	4 479 768	37 198 152	643	2 015 489	14 761 832	18 449	1 899 659	15 878 590	8 394 916	67 838 574

**Table 2 – Number, square metres and value of residential buildings reported as completed to municipalities: dwelling-houses, flats and townhouses and other residential buildings by province**

Municipal reporting aggregated to provincial level by year		Residential buildings										
		Dwelling-houses			Flats and townhouses			Other residential buildings <sup>1</sup>			Residential buildings reported as completed to municipalities	
		Number of dwelling-houses	Total square metres	Total value R'000	Number of units	Total square metres	Total value R'000	Number of buildings	Total square metres	Total value R'000	Total square metres	Total value R'000
Western Cape	2020	4 610	669 216	4 450 852	3 968	431 812	3 474 162	10	12 141	88 356	1 113 169	8 013 370
	2021	6 610	866 004	5 732 065	7 890	649 352	5 046 123	22	25 817	202 933	1 541 173	10 981 121
	2022	7 432	1 120 035	7 600 612	6 797	646 901	5 135 608	30	45 120	327 774	1 812 056	13 063 994
Eastern Cape	2020	476	80 437	570 726	103	10 055	69 786	0	0	0	90 492	640 512
	2021	667	134 614	997 772	281	29 070	215 253	1	26	200	163 710	1 213 225
	2022	906	144 052	1 145 559	221	20 059	157 157	1	5 297	40 676	169 408	1 343 392
Northern Cape	2020	127	29 224	246 832	18	1 257	10 560	1	500	4 300	30 981	261 692
	2021	167	31 493	264 732	17	1 662	13 982	1	1 117	9 789	34 272	288 503
	2022	100	20 779	181 515	20	1 571	12 730	0	0	0	22 350	194 245
Free State	2020	216	31 362	231 051	36	10 313	83 246	0	0	0	41 675	314 297
	2021	446	52 382	408 764	35	4 012	33 393	5	605	4 942	56 999	447 099
	2022	318	43 124	351 396	2	355	2 044	5	1 637	9 759	45 116	363 199
KwaZulu-Natal	2020	691	162 448	1 717 932	1 489	173 764	1 832 094	6	15 886	177 771	352 098	3 727 797
	2021	701	194 968	2 034 877	1 108	141 030	1 430 466	3	24 068	259 649	360 066	3 724 992
	2022	771	248 703	2 609 025	2 315	234 754	2 585 736	2	20 513	225 373	503 970	5 420 134
North West	2020	578	112 112	721 094	412	38 780	264 269	3	2 578	16 623	153 470	1 001 986
	2021	871	156 329	1 023 179	217	25 104	165 565	0	0	0	181 433	1 188 744
	2022	1 117	188 962	1 302 413	194	20 069	126 036	10	2 043	13 504	211 074	1 441 953
Gauteng	2020	6 477	753 664	5 757 041	3 896	516 550	4 610 428	3	5 226	51 601	1 275 440	10 419 070
	2021	6 682	940 682	7 925 665	5 785	597 429	5 639 712	3	1 411	13 416	1 539 522	13 578 793
	2022	7 789	1 041 201	9 412 417	4 082	441 192	4 316 127	2	3 266	27 955	1 485 659	13 756 499
Mpumalanga	2020	516	89 728	618 261	47	6 840	45 231	0	0	0	96 568	663 492
	2021	526	94 125	708 280	34	2 858	18 952	1	8 005	66 658	104 988	793 890
	2022	706	117 470	865 411	4	509	2 966	0	0	0	117 979	868 377

<sup>1</sup> Other residential buildings include institutions for the disabled, boarding houses, hostels and tourism accommodation e.g. hotels, motels, guest-houses, holiday chalets, bed-and-breakfast accommodation and casinos.

**Table 2 – Number, square metres and value of residential buildings reported as completed to municipalities: dwelling-houses, flats and townhouses and other residential buildings by province (concluded)**

Municipal reporting aggregated to provincial level by year		Residential buildings										
		Dwelling-houses			Flats and townhouses			Other residential buildings <sup>1</sup>			Residential buildings reported as completed to municipalities	
		Number of dwelling-houses	Total square metres	Total value R'000	Number of units	Total square metres	Total value R'000	Number of buildings	Total square metres	Total value R'000	Total square metres	Total value R'000
Limpopo	2020	301	70 940	420 606	216	16 883	103 003	1	760	4 579	88 583	528 188
	2021	406	88 631	546 868	154	15 145	94 766	1	140	900	103 916	642 534
	2022	399	98 663	655 260	118	13 278	89 630	1	215	1 469	112 156	746 359
South Africa	2020	13 992	1 999 131	14 734 395	10 185	1 206 254	10 492 779	24	37 091	343 230	3 242 476	25 570 404
	2021	17 076	2 559 228	19 642 202	15 521	1 465 662	12 658 212	37	61 189	558 487	4 086 079	32 858 901
	2022	19 538	3 022 989	24 123 608	13 753	1 378 688	12 428 034	51	78 091	646 510	4 479 768	37 198 152

<sup>1</sup> Other residential buildings include institutions for the disabled, boarding houses, hostels and tourism accommodation e.g. hotels, motels, guest-houses, holiday chalets, bed-and-breakfast accommodation and casinos.

**Table 3 – Number, square metres and value of dwelling-houses reported as completed to municipalities by size of dwelling-house by province**

Municipal reporting aggregated to provincial level by year		Size of dwelling-house						Dwelling-houses reported as completed to municipalities		
		Smaller than 80 square metres			Equal to or larger than 80 square metres					
		Number of dwelling-houses	Total square metres	Total value R'000	Number of dwelling-houses	Total square metres	Total value R'000	Number of dwelling-houses	Total square metres	Total value R'000
Western Cape	2020	2 276	103 323	578 697	2 334	565 893	3 872 155	4 610	669 216	4 450 852
	2021	3 665	164 562	937 500	2 945	701 442	4 794 565	6 610	866 004	5 732 065
	2022	3 424	149 985	868 000	4 008	970 050	6 732 612	7 432	1 120 035	7 600 612
Eastern Cape	2020	106	6 211	39 290	370	74 226	531 436	476	80 437	570 726
	2021	167	9 312	62 422	500	125 302	935 350	667	134 614	997 772
	2022	339	20 124	147 007	567	123 928	998 552	906	144 052	1 145 559
Northern Cape	2020	5	308	2 650	122	28 916	244 182	127	29 224	246 832
	2021	37	2 449	21 265	130	29 044	243 467	167	31 493	264 732
	2022	16	1 059	9 310	84	19 720	172 205	100	20 779	181 515
Free State	2020	109	6 595	53 338	107	24 767	177 713	216	31 362	231 051
	2021	241	14 579	123 155	205	37 803	285 609	446	52 382	408 764
	2022	147	7 977	72 843	171	35 147	278 553	318	43 124	351 396
KwaZulu-Natal	2020	131	7 839	78 226	560	154 609	1 639 706	691	162 448	1 717 932
	2021	86	4 996	48 976	615	189 972	1 985 901	701	194 968	2 034 877
	2022	105	5 891	55 725	666	242 812	2 553 300	771	248 703	2 609 025
North West	2020	104	6 175	35 564	474	105 937	685 530	578	112 112	721 094
	2021	232	13 918	81 941	639	142 411	941 238	871	156 329	1 023 179
	2022	307	18 143	103 798	810	170 819	1 198 615	1 117	188 962	1 302 413
Gauteng	2020	4 529	237 891	1 440 455	1 948	515 773	4 316 586	6 477	753 664	5 757 041
	2021	3 946	215 865	1 511 149	2 736	724 817	6 414 516	6 682	940 682	7 925 665
	2022	4 915	277 088	2 096 208	2 874	764 113	7 316 209	7 789	1 041 201	9 412 417
Mpumalanga	2020	178	9 633	50 811	338	80 095	567 450	516	89 728	618 261
	2021	164	9 181	58 086	362	84 944	650 194	526	94 125	708 280
	2022	184	10 414	70 536	522	107 056	794 875	706	117 470	865 411

**Table 3 – Number, square metres and value of dwelling-houses reported as completed to municipalities by size of dwelling-house by province (concluded)**

Municipal reporting aggregated to provincial level by year		Size of dwelling-house						Dwelling-houses reported as completed to municipalities		
		Smaller than 80 square metres			Equal to or larger than 80 square metres					
		Number of dwelling-houses	Total square metres	Total value R'000	Number of dwelling-houses	Total square metres	Total value R'000	Number of dwelling-houses	Total square metres	Total value R'000
Limpopo	2020	92	5 309	31 783	209	65 631	388 823	301	70 940	420 606
	2021	123	7 514	47 129	283	81 117	499 739	406	88 631	546 868
	2022	100	6 488	42 949	299	92 175	612 311	399	98 663	655 260
South Africa	2020	<b>7 530</b>	<b>383 284</b>	<b>2 310 814</b>	<b>6 462</b>	<b>1 615 847</b>	<b>12 423 581</b>	<b>13 992</b>	<b>1 999 131</b>	<b>14 734 395</b>
	2021	<b>8 661</b>	<b>442 376</b>	<b>2 891 623</b>	<b>8 415</b>	<b>2 116 852</b>	<b>16 750 579</b>	<b>17 076</b>	<b>2 559 228</b>	<b>19 642 202</b>
	2022	<b>9 537</b>	<b>497 169</b>	<b>3 466 376</b>	<b>10 001</b>	<b>2 525 820</b>	<b>20 657 232</b>	<b>19 538</b>	<b>3 022 989</b>	<b>24 123 608</b>



**Table 4 – Number, square metres and value of flats and townhouses reported as completed to municipalities by province**

Municipal reporting aggregated to provincial level by year		Flats			Townhouses			Flats and townhouses reported as completed to municipalities		
		Number of units	Total square metres	Total value R'000	Number of units	Total square metres	Total value R'000	Number of units	Total square metres	Total value R'000
Western Cape	2020	3 338	302 835	2 471 077	630	128 977	1 003 085	3 968	431 812	3 474 162
	2021	6 519	450 085	3 499 947	1 371	199 267	1 546 176	7 890	649 352	5 046 123
	2022	5 382	424 429	3 356 842	1 415	222 472	1 778 766	6 797	646 901	5 135 608
Eastern Cape	2020	16	970	7 013	87	9 085	62 773	103	10 055	69 786
	2021	92	4 814	33 941	189	24 256	181 312	281	29 070	215 253
	2022	119	6 233	47 008	102	13 826	110 149	221	20 059	157 157
Northern Cape	2020	0	0	0	18	1 257	10 560	18	1 257	10 560
	2021	0	0	0	17	1 662	13 982	17	1 662	13 982
	2022	18	1 311	10 623	2	260	2 107	20	1 571	12 730
Free State	2020	0	0	0	36	10 313	83 246	36	10 313	83 246
	2021	33	3 640	30 703	2	372	2 690	35	4 012	33 393
	2022	0	0	0	2	355	2 044	2	355	2 044
KwaZulu-Natal	2020	957	103 205	1 173 827	532	70 559	658 267	1 489	173 764	1 832 094
	2021	715	82 450	929 006	393	58 580	501 460	1 108	141 030	1 430 466
	2022	1 992	181 561	2 100 896	323	53 193	484 840	2 315	234 754	2 585 736
North West	2020	315	27 758	188 028	97	11 022	76 241	412	38 780	264 269
	2021	145	13 012	83 812	72	12 092	81 753	217	25 104	165 565
	2022	118	9 242	55 926	76	10 827	70 110	194	20 069	126 036
Gauteng	2020	590	40 715	461 740	3 306	475 835	4 148 688	3 896	516 550	4 610 428
	2021	1 207	91 221	1 058 996	4 578	506 208	4 580 716	5 785	597 429	5 639 712
	2022	911	60 835	656 404	3 171	380 357	3 659 723	4 082	441 192	4 316 127
Mpumalanga	2020	20	3 315	25 993	27	3 525	19 238	47	6 840	45 231
	2021	8	317	2 640	26	2 541	16 312	34	2 858	18 952
	2022	0	0	0	4	509	2 966	4	509	2 966

**Table 4 – Number, square metres and value of flats and townhouses reported as completed to municipalities by province (concluded)**

Municipal reporting aggregated to provincial level by year		Flats			Townhouses			Flats and townhouses reported as completed to municipalities		
		Number of units	Total square metres	Total value R'000	Number of units	Total square metres	Total value R'000	Number of units	Total square metres	Total value R'000
Limpopo	2020	66	3 662	22 949	150	13 221	80 054	216	16 883	103 003
	2021	0	0	0	154	15 145	94 766	154	15 145	94 766
	2022	48	4 032	28 128	70	9 246	61 502	118	13 278	89 630
South Africa	2020	5 302	482 460	4 350 627	4 883	723 794	6 142 152	10 185	1 206 254	10 492 779
	2021	8 719	645 539	5 639 045	6 802	820 123	7 019 167	15 521	1 465 662	12 658 212
	2022	8 588	687 643	6 255 827	5 165	691 045	6 172 207	13 753	1 378 688	12 428 034

**Table 5.1 – Number, square metres and value of non-residential buildings reported as completed to municipalities by province: office and banking space, shopping space and industrial and warehouse space**

Municipal reporting aggregated to provincial level by year		Non-residential buildings								
		Office and banking space			Shopping space			Industrial and warehouse space		
		Number of buildings	Total square metres	Total value R'000	Number of buildings	Total square metres	Total value R'000	Number of buildings	Total square metres	Total value R'000
Western Cape	2020	18	87 562	708 327	19	90 562	710 509	71	151 424	1 017 617
	2021	25	101 600	824 807	42	109 695	895 455	98	305 719	2 111 329
	2022	43	68 472	545 622	38	95 637	780 994	96	253 945	1 712 265
Eastern Cape	2020	2	1 070	7 047	2	2 369	17 128	9	82 129	547 435
	2021	5	12 747	89 972	4	3 605	23 466	16	115 471	827 859
	2022	1	3 921	30 109	7	29 013	237 538	14	12 111	93 300
Northern Cape	2020	1	400	3 440	1	4 775	39 155	14	13 768	116 214
	2021	4	1 040	8 562	2	1 190	10 429	3	4 188	34 475
	2022	3	1 466	13 195	1	249	2 344	6	22 619	186 492
Free State	2020	2	6 713	54 187	2	3 620	28 517	8	15 415	122 231
	2021	1	147	1 091	2	538	3 640	6	6 315	46 469
	2022	1	261	2 081	1	207	1 992	2	2 786	21 319
KwaZulu-Natal	2020	8	29 615	302 696	16	17 559	147 588	37	418 962	2 518 306
	2021	11	27 611	286 860	46	111 176	1 028 371	60	111 282	692 660
	2022	6	10 858	116 522	19	58 740	621 833	53	301 253	1 845 370
North West	2020	5	5 785	35 774	10	21 516	140 758	5	6 751	39 972
	2021	3	7 339	42 368	13	119 727	709 928	7	9 764	66 276
	2022	3	1 309	7 688	14	49 168	366 820	15	19 617	133 706
Gauteng	2020	17	254 755	2 527 988	26	78 085	807 222	62	340 737	2 046 428
	2021	9	30 407	374 815	19	115 114	1 158 117	55	379 629	2 191 974
	2022	14	40 386	411 461	18	126 940	1 439 571	63	587 462	3 658 606
Mpumalanga	2020	1	863	4 573	4	20 575	161 328	10	16 809	120 082
	2021	7	6 989	55 890	3	7 840	51 456	7	10 410	62 457
	2022	2	1 455	8 570	0	0	0	10	14 497	120 236

**Table 5.1 – Number, square metres and value of non-residential buildings reported as completed to municipalities by province: office and banking space, shopping space and industrial and warehouse space (concluded)**

Municipal reporting aggregated to provincial level by year		Non-residential buildings								
		Office and banking space			Shopping space			Industrial and warehouse space		
		Number of buildings	Total square metres	Total value R'000	Number of buildings	Total square metres	Total value R'000	Number of buildings	Total square metres	Total value R'000
Limpopo	2020	3	8 190	49 282	2	964	5 558	9	30 673	185 039
	2021	3	1 029	6 223	2	2 580	14 078	5	2 181	13 734
	2022	0	0	0	6	10 971	72 254	11	19 349	125 963
South Africa	2020	57	394 953	3 693 314	82	240 025	2 057 763	225	1 076 668	6 713 324
	2021	68	188 909	1 690 588	133	471 465	3 894 940	257	944 959	6 047 233
	2022	73	128 128	1 135 248	104	370 925	3 523 346	270	1 233 639	7 897 257

**Table 5.2 – Number, square metres and value of non-residential buildings reported as completed to municipalities by province: schools, nursery schools, crèches, hospitals, churches, sports club, recreation clubs and all other space**

Municipal reporting aggregated to provincial level by year		Non-residential buildings											
		Schools, nursery schools, crèches and hospitals			Churches, sport and recreation clubs			All other non-residential space			Non-residential buildings reported as completed to municipalities <sup>1</sup>		
		Number of buildings	Total square metres	Total value R'000	Number of buildings	Total square metres	Total value R'000	Number of buildings	Total square metres	Total value R'000	Number of buildings	Total square metres	Total value R'000
Western Cape	2020	14	40 594	290 523	10	9 065	60 748	29	24 831	171 692	161	404 038	2 959 416
	2021	19	26 911	189 830	11	12 156	84 166	62	18 470	118 206	257	574 551	4 223 793
	2022	20	38 746	273 534	24	17 839	117 550	86	90 997	704 106	307	565 636	4 134 071
Eastern Cape	2020	2	1 263	6 947	1	375	1 533	3	214	1 127	19	87 420	581 217
	2021	4	17 160	127 844	3	1 921	13 843	1	35	245	33	150 939	1 083 229
	2022	7	33 513	253 091	3	1 195	7 968	2	1 028	8 287	34	80 781	630 293
Northern Cape	2020	1	189	1 550	4	1 281	10 890	0	0	0	21	20 413	171 249
	2021	0	0	0	3	449	3 735	0	0	0	12	6 867	57 201
	2022	0	0	0	1	202	1 637	1	240	2 259	12	24 776	205 927
Free State	2020	0	0	0	0	0	0	0	0	0	12	25 748	204 935
	2021	1	4 235	37 937	1	408	2 213	1	63	440	12	11 706	91 790
	2022	0	0	0	2	353	2 129	0	0	0	6	3 607	27 521
KwaZulu-Natal	2020	4	8 072	89 450	4	5 805	38 015	2	253	2 884	71	480 266	3 098 939
	2021	5	3 429	27 107	3	3 332	21 218	0	0	0	125	256 830	2 056 216
	2022	7	18 991	191 008	7	4 145	42 609	1	50	250	93	394 037	2 817 592
North West	2020	2	2 194	12 255	0	0	0	0	0	0	22	36 246	228 759
	2021	0	0	0	1	520	3 993	0	0	0	24	137 350	822 565
	2022	5	14 991	87 789	2	1 147	6 880	3	2 225	15 555	42	88 457	618 438
Gauteng	2020	9	19 476	154 128	3	2 045	14 208	4	1 278	11 692	121	696 376	5 561 666
	2021	14	53 158	505 112	7	16 418	101 889	6	8 061	68 963	110	602 787	4 400 870
	2022	10	39 874	354 049	3	1 282	12 432	6	3 199	24 854	114	799 143	5 900 973
Mpumalanga	2020	3	9 403	71 753	0	0	0	3	183	992	21	47 833	358 728
	2021	0	0	0	1	3 964	23 388	0	0	0	18	29 203	193 191
	2022	2	8 599	71 604	0	0	0	0	0	0	14	24 551	200 410

<sup>1</sup> Non-residential buildings include office and banking space, shopping space, industrial and warehouse space, schools, nursery schools, crèches, hospitals, churches, sport clubs, recreation clubs and all other space – see Tables 5.1 and 5.2.

**Table 5.2 – Number, square metres and value of non-residential buildings reported as completed to municipalities by province: schools, nursery schools, crèches, hospitals, churches, sports club, recreation clubs and all other space (concluded)**

Municipal reporting aggregated to provincial level by year		Non-residential buildings											
		Schools, nursery schools, crèches and hospitals			Churches, sport and recreation clubs			All other non-residential space			Non-residential buildings reported as completed to municipalities <sup>1</sup>		
		Number of buildings	Total square metres	Total value R'000	Number of buildings	Total square metres	Total value R'000	Number of buildings	Total square metres	Total value R'000	Number of buildings	Total square metres	Total value R'000
Limpopo	2020	2	5 535	29 810	1	2 976	17 160	2	1 926	11 165	19	50 264	298 014
	2021	0	0	0	1	1 752	11 269	3	1 118	6 458	14	8 660	51 762
	2022	2	2 167	15 490	0	0	0	2	2 014	12 900	21	34 501	226 607
South Africa	2020	37	86 726	656 416	23	21 547	142 554	43	28 685	199 552	467	1 848 604	13 462 923
	2021	43	104 893	887 830	31	40 920	265 714	73	27 747	194 312	605	1 778 893	12 980 617
	2022	53	156 881	1 246 565	42	26 163	191 205	101	99 753	768 211	643	2 015 489	14 761 832

<sup>1</sup> Non-residential buildings include office and banking space, shopping space, industrial and warehouse space, schools, nursery schools, crèches, hospitals, churches, sport clubs, recreation clubs and all other space – see Tables 5.1 and 5.2.

**Table 6 – Number, square metres and value of additions and alterations reported as completed to municipalities by province**

Municipal reporting aggregated to provincial level by year		Additions and alterations to residential buildings			Additions and alterations to non-residential buildings			Internal alterations	Additions and alterations reported as completed to municipalities		
		Number of plans	Total square metres	Total value R'000	Number of plans	Total square metres	Total value R'000	Total value R'000	Number of plans	Total square metres	Total value R'000
Western Cape	2020	5 488	405 180	2 880 207	488	211 098	1 490 391	1 040 184	5 976	616 278	5 410 782
	2021	8 106	588 764	3 935 943	683	285 798	2 040 232	1 214 938	8 789	874 562	7 191 113
	2022	12 577	972 486	6 638 980	694	279 605	2 237 601	1 033 005	13 271	1 252 091	9 909 586
Eastern Cape	2020	1 117	74 775	523 552	46	22 757	156 128	12 159	1 163	97 532	691 839
	2021	1 297	98 968	720 969	102	21 065	155 659	41 480	1 399	120 033	918 108
	2022	982	80 193	632 544	100	45 477	360 928	19 567	1 082	125 670	1 013 039
Northern Cape	2020	289	21 188	180 879	11	7 110	61 167	2 340	300	28 298	244 386
	2021	320	27 619	230 879	13	9 110	77 170	2 678	333	36 729	310 727
	2022	423	37 482	326 050	10	4 145	36 200	4 918	433	41 627	367 168
Free State	2020	118	8 975	57 331	8	3 558	28 376	13 413	126	12 533	99 120
	2021	229	19 663	131 176	6	631	4 174	2 095	235	20 294	137 445
	2022	281	19 067	131 348	15	4 096	31 462	3 558	296	23 163	166 368
KwaZulu-Natal	2020	907	81 859	899 969	70	32 684	349 535	69 825	977	114 543	1 319 329
	2021	1 139	116 428	1 313 999	100	54 489	581 616	68 439	1 239	170 917	1 964 054
	2022	992	90 720	1 025 441	94	35 342	384 686	123 065	1 086	126 062	1 533 192
North West	2020	214	22 170	146 755	19	5 657	38 821	19 360	233	27 827	204 936
	2021	297	24 613	150 926	15	16 175	100 948	47 362	312	40 788	299 236
	2022	191	16 591	101 587	15	4 491	30 231	30 782	206	21 082	162 600
Gauteng	2020	1 344	146 852	1 209 072	83	69 515	600 914	34 283	1 427	216 367	1 844 269
	2021	1 869	205 123	1 748 400	79	90 379	658 871	27 144	1 948	295 502	2 434 415
	2022	1 759	203 225	1 870 835	88	80 204	607 257	38 672	1 847	283 429	2 516 764
Mpumalanga	2020	284	19 914	118 468	14	5 024	36 093	30 423	298	24 938	184 984
	2021	166	13 901	97 265	6	2 261	13 067	45 075	172	16 162	155 407
	2022	142	11 021	78 818	1	1 806	10 634	19 690	143	12 827	109 142

**Table 6 – Number, square metres and value of additions and alterations reported as completed to municipalities by province (concluded)**

Municipal reporting aggregated to provincial level by year		Additions and alterations to residential buildings			Additions and alterations to non-residential buildings			Internal alterations	Additions and alterations reported as completed to municipalities		
		Number of plans	Total square metres	Total value R'000	Number of plans	Total square metres	Total value R'000	Total value R'000	Number of plans	Total square metres	Total value R'000
Limpopo	2020	62	6 276	36 203	7	3 743	22 315	10 000	69	10 019	68 518
	2021	82	7 958	47 763	4	669	4 283	19 001	86	8 627	71 047
	2022	79	10 230	66 641	6	3 478	23 403	10 687	85	13 708	100 731
South Africa	2020	9 823	787 189	6 052 436	746	361 146	2 783 740	1 231 987	10 569	1 148 335	10 068 163
	2021	13 505	1 103 037	8 377 320	1 008	480 577	3 636 020	1 468 212	14 513	1 583 614	13 481 552
	2022	17 426	1 441 015	10 872 244	1 023	458 644	3 722 402	1 283 944	18 449	1 899 659	15 878 590



## **Part 2**

**Municipal reporting of buildings completed  
aggregated to provincial level:  
monthly and annual surveys**

**Table 7 – Number, square metres and value of residential buildings, non-residential buildings and additions and alterations reported as completed to municipalities by province**

Municipal reporting aggregated to provincial level by year		Residential buildings		Non-residential buildings			Additions and alterations			Buildings reported as completed to municipalities	
		Total square metres	Total value R'000	Number of buildings	Total square metres	Total value R'000	Number of plans	Total square metres	Total value R'000	Total square metres	Total value R'000
Western Cape	2020	1 256 812	9 120 419	226	464 386	3 378 550	7 064	716 145	6 257 693	2 437 343	18 756 662
	2021	1 778 698	12 911 667	330	640 141	4 693 354	9 838	951 880	7 855 681	3 370 719	25 460 702
	2022	2 087 649	15 530 875	403	619 977	4 588 823	14 790	1 363 465	10 820 248	4 071 091	30 939 946
Eastern Cape	2020	191 813	1 151 574	75	120 703	771 025	1 496	125 562	882 904	438 078	2 805 503
	2021	254 972	1 621 346	79	198 753	1 396 495	1 692	149 939	1 133 723	603 664	4 151 564
	2022	274 560	1 923 913	93	128 158	901 625	1 700	213 386	1 566 880	616 104	4 392 418
Northern Cape	2020	68 466	480 035	48	37 304	282 062	801	51 953	382 781	157 723	1 144 878
	2021	76 049	545 834	36	15 949	115 543	554	53 363	421 832	145 361	1 083 209
	2022	106 441	711 037	41	39 679	305 610	609	54 188	450 119	200 308	1 466 766
Free State	2020	86 885	540 375	14	27 313	213 295	213	19 103	132 864	133 301	886 534
	2021	88 533	593 076	20	15 926	113 123	348	27 303	176 650	131 762	882 849
	2022	87 966	589 319	13	6 636	43 901	359	27 897	192 330	122 499	825 550
KwaZulu-Natal	2020	632 764	4 654 099	99	492 717	3 174 595	1 181	126 651	1 390 329	1 252 132	9 219 023
	2021	542 962	4 444 960	159	313 779	2 406 255	1 417	183 035	2 037 636	1 039 776	8 888 851
	2022	792 654	6 666 587	174	455 619	3 192 669	1 259	143 533	1 644 378	1 391 806	11 503 634
North West	2020	174 722	1 092 409	25	39 869	243 302	335	36 563	244 400	251 154	1 580 111
	2021	200 612	1 284 004	31	147 557	881 801	352	44 642	319 017	392 811	2 484 822
	2022	217 706	1 475 005	48	90 184	627 531	282	31 233	220 535	339 123	2 323 071
Gauteng	2020	1 275 440	10 419 070	121	696 376	5 561 666	1 427	216 367	1 844 269	2 188 183	17 825 005
	2021	1 539 522	13 578 793	110	602 787	4 400 870	1 948	295 502	2 434 415	2 437 811	20 414 078
	2022	1 485 659	13 756 499	114	799 143	5 900 973	1 847	283 429	2 516 764	2 568 231	22 174 236
Mpumalanga	2020	174 457	986 996	54	76 217	535 002	497	44 867	394 430	295 541	1 916 428
	2021	169 943	1 109 136	36	44 425	287 482	323	29 099	285 396	243 467	1 682 014
	2022	186 995	1 256 111	56	57 036	401 237	303	30 702	235 077	274 733	1 892 425

**Table 7 – Number, square metres and value of residential buildings, non-residential buildings and additions and alterations reported as completed to municipalities by province (concluded)**

Municipal reporting aggregated to provincial level by year		Residential buildings		Non-residential buildings			Additions and alterations			Buildings reported as completed to municipalities	
		Total square metres	Total value R'000	Number of buildings	Total square metres	Total value R'000	Number of plans	Total square metres	Total value R'000	Total square metres	Total value R'000
Limpopo	2020	263 013	1 160 327	48	65 258	381 772	227	27 076	180 449	355 347	1 722 548
	2021	227 686	1 153 334	68	44 737	263 911	294	27 585	203 142	300 008	1 620 387
	2022	346 473	1 796 612	134	145 736	937 779	208	38 026	254 297	530 235	2 988 688
South Africa	2020	4 124 372	29 605 304	710	2 020 143	14 541 269	13 241	1 364 287	11 710 119	7 508 802	55 856 692
	2021	4 878 977	37 242 150	869	2 024 054	14 558 834	16 766	1 762 348	14 867 492	8 665 379	66 668 476
	2022	5 586 103	43 705 958	1 076	2 342 168	16 900 148	21 357	2 185 859	17 900 628	10 114 130	78 506 734

**Table 8 – Number, square metres and value of residential buildings reported as completed to municipalities: dwelling-houses, flats and townhouses and other residential buildings by province**

Municipal reporting aggregated to provincial level by year		Residential buildings										
		Dwelling-houses			Flats and townhouses			Other residential buildings <sup>1</sup>			Residential buildings reported as completed to municipalities	
		Number of dwelling-houses	Total square metres	Total value R'000	Number of units	Total square metres	Total value R'000	Number of buildings	Total square metres	Total value R'000	Total square metres	Total value R'000
Western Cape	2020	5 412	806 117	5 505 085	4 030	437 768	3 521 133	12	12 927	94 201	1 256 812	9 120 419
	2021	7 896	1 095 024	7 597 217	7 983	656 799	5 104 310	24	26 875	210 140	1 778 698	12 911 667
	2022	9 064	1 373 099	9 868 415	6 945	666 466	5 307 161	34	48 084	355 299	2 087 649	15 530 875
Eastern Cape	2020	1 501	159 724	955 256	286	29 487	183 121	6	2 602	13 197	191 813	1 151 574
	2021	1 930	206 775	1 299 455	390	46 205	311 224	3	1 992	10 667	254 972	1 621 346
	2022	2 026	210 472	1 479 225	540	53 649	371 048	40	10 439	73 640	274 560	1 923 913
Northern Cape	2020	352	65 699	458 671	22	1 761	13 806	2	1 006	7 558	68 466	480 035
	2021	404	70 596	508 018	32	3 782	24 459	3	1 671	13 357	76 049	545 834
	2022	555	99 632	665 010	42	6 129	41 527	1	680	4 500	106 441	711 037
Free State	2020	663	76 572	457 129	36	10 313	83 246	0	0	0	86 885	540 375
	2021	821	83 279	551 364	43	4 649	36 770	5	605	4 942	88 533	593 076
	2022	862	85 974	577 516	2	355	2 044	5	1 637	9 759	87 966	589 319
KwaZulu-Natal	2020	6 718	434 529	2 590 534	1 560	180 023	1 871 153	8	18 212	192 412	632 764	4 654 099
	2021	4 431	363 418	2 668 239	1 257	154 578	1 510 831	4	24 966	265 890	542 962	4 444 960
	2022	6 229	508 028	3 672 278	2 407	260 056	2 746 504	11	24 570	247 805	792 654	6 666 587
North West	2020	871	131 027	797 420	421	40 767	275 741	4	2 928	19 248	174 722	1 092 409
	2021	1 081	175 378	1 117 763	218	25 234	166 241	0	0	0	200 612	1 284 004
	2022	1 201	195 594	1 335 465	194	20 069	126 036	10	2 043	13 504	217 706	1 475 005
Gauteng	2020	6 477	753 664	5 757 041	3 896	516 550	4 610 428	3	5 226	51 601	1 275 440	10 419 070
	2021	6 682	940 682	7 925 665	5 785	597 429	5 639 712	3	1 411	13 416	1 539 522	13 578 793
	2022	7 789	1 041 201	9 412 417	4 082	441 192	4 316 127	2	3 266	27 955	1 485 659	13 756 499
Mpumalanga	2020	1 721	158 506	890 839	166	15 951	96 157	0	0	0	174 457	986 996
	2021	1 389	148 669	961 745	118	12 811	77 227	2	8 463	70 164	169 943	1 109 136
	2022	1 366	175 264	1 173 450	59	5 883	40 578	4	5 848	42 083	186 995	1 256 111

<sup>1</sup> Other residential buildings include institutions for the disabled, boarding houses, hostels and tourism accommodation e.g. hotels, motels, guest-houses, holiday chalets, bed-and-breakfast accommodation and casinos.

**Table 8 – Number, square metres and value of residential buildings reported as completed to municipalities: dwelling-houses, flats and townhouses and other residential buildings by province (concluded)**

Municipal reporting aggregated to provincial level by year		Residential buildings										
		Dwelling-houses			Flats and townhouses			Other residential buildings <sup>1</sup>			Residential buildings reported as completed to municipalities	
		Number of dwelling-houses	Total square metres	Total value R'000	Number of units	Total square metres	Total value R'000	Number of buildings	Total square metres	Total value R'000	Total square metres	Total value R'000
Limpopo	2020	3 015	225 903	958 670	282	27 232	154 449	35	9 878	47 208	263 013	1 160 327
	2021	2 056	200 238	995 291	213	22 058	130 574	5	5 390	27 469	227 686	1 153 334
	2022	3 188	284 813	1 467 733	174	27 117	166 588	86	34 543	162 291	346 473	1 796 612
South Africa	2020	26 730	2 811 741	18 370 645	10 699	1 259 852	10 809 234	70	52 779	425 425	4 124 372	29 605 304
	2021	26 690	3 284 059	23 624 757	16 039	1 523 545	13 001 348	49	71 373	616 045	4 878 977	37 242 150
	2022	32 280	3 974 077	29 651 509	14 445	1 480 916	13 117 613	193	131 110	936 836	5 586 103	43 705 958

<sup>1</sup> Other residential buildings include institutions for the disabled, boarding houses, hostels and tourism accommodation e.g. hotels, motels, guest-houses, holiday chalets, bed-and-breakfast accommodation and casinos.

**Table 9 – Number, square metres and value of dwelling-houses reported as completed to municipalities by size of dwelling-house by province**

Municipal reporting aggregated to provincial level by year		Size of dwelling-house						Dwelling-houses reported as completed to municipalities		
		Smaller than 80 square metres			Equal to or larger than 80 square metres					
		Number of dwelling-houses	Total square metres	Total value R'000	Number of dwelling-houses	Total square metres	Total value R'000	Number of dwelling-houses	Total square metres	Total value R'000
Western Cape	2020	2 568	117 503	650 330	2 844	688 614	4 854 755	5 412	806 117	5 505 085
	2021	4 024	180 920	1 056 893	3 872	914 104	6 540 324	7 896	1 095 024	7 597 217
	2022	4 054	181 840	1 127 438	5 010	1 191 259	8 740 977	9 064	1 373 099	9 868 415
Eastern Cape	2020	822	35 551	134 946	679	124 173	820 310	1 501	159 724	955 256
	2021	1 295	55 964	224 038	635	150 811	1 075 417	1 930	206 775	1 299 455
	2022	1 257	62 378	322 827	769	148 094	1 156 398	2 026	210 472	1 479 225
Northern Cape	2020	38	2 117	12 396	314	63 582	446 275	352	65 699	458 671
	2021	89	5 238	36 338	315	65 358	471 680	404	70 596	508 018
	2022	170	8 029	45 072	385	91 603	619 938	555	99 632	665 010
Free State	2020	405	20 961	103 463	258	55 611	353 666	663	76 572	457 129
	2021	502	27 024	165 435	319	56 255	385 929	821	83 279	551 364
	2022	517	24 993	146 620	345	60 981	430 896	862	85 974	577 516
KwaZulu-Natal	2020	6 000	245 688	745 341	718	188 841	1 845 193	6 718	434 529	2 590 534
	2021	3 707	152 629	549 682	724	210 789	2 118 557	4 431	363 418	2 668 239
	2022	5 400	233 819	916 746	829	274 209	2 755 532	6 229	508 028	3 672 278
North West	2020	363	17 489	69 262	508	113 538	728 158	871	131 027	797 420
	2021	363	19 460	99 107	718	155 918	1 018 656	1 081	175 378	1 117 763
	2022	368	20 687	113 292	833	174 907	1 222 173	1 201	195 594	1 335 465
Gauteng	2020	4 529	237 891	1 440 455	1 948	515 773	4 316 586	6 477	753 664	5 757 041
	2021	3 946	215 865	1 511 149	2 736	724 817	6 414 516	6 682	940 682	7 925 665
	2022	4 915	277 088	2 096 208	2 874	764 113	7 316 209	7 789	1 041 201	9 412 417
Mpumalanga	2020	1 277	56 467	191 501	444	102 039	699 338	1 721	158 506	890 839
	2021	904	42 454	180 736	485	106 215	781 009	1 389	148 669	961 745
	2022	715	35 824	162 465	651	139 440	1 010 985	1 366	175 264	1 173 450

**Table 9 – Number, square metres and value of dwelling-houses reported as completed to municipalities by size of dwelling-house by province (concluded)**

Municipal reporting aggregated to provincial level by year		Size of dwelling-house						Dwelling-houses reported as completed to municipalities		
		Smaller than 80 square metres			Equal to or larger than 80 square metres					
		Number of dwelling-houses	Total square metres	Total value R'000	Number of dwelling-houses	Total square metres	Total value R'000	Number of dwelling-houses	Total square metres	Total value R'000
Limpopo	2020	2 676	125 125	368 808	339	100 778	589 862	3 015	225 903	958 670
	2021	1 593	74 155	219 984	463	126 083	775 307	2 056	200 238	995 291
	2022	2 663	115 863	436 124	525	168 950	1 031 609	3 188	284 813	1 467 733
South Africa	2020	18 678	858 792	3 716 502	8 052	1 952 949	14 654 143	26 730	2 811 741	18 370 645
	2021	16 423	773 709	4 043 362	10 267	2 510 350	19 581 395	26 690	3 284 059	23 624 757
	2022	20 059	960 521	5 366 792	12 221	3 013 556	24 284 717	32 280	3 974 077	29 651 509

**Table 10 – Number, square metres and value of flats and townhouses reported as completed to municipalities by province**

Municipal reporting aggregated to provincial level by year		Flats			Townhouses			Flats and townhouses reported as completed to municipalities		
		Number of units	Total square metres	Total value R'000	Number of units	Total square metres	Total value R'000	Number of units	Total square metres	Total value R'000
Western Cape	2020	3 362	304 298	2 480 962	668	133 470	1 040 171	4 030	437 768	3 521 133
	2021	6 534	450 805	3 505 073	1 449	205 994	1 599 237	7 983	656 799	5 104 310
	2022	5 395	424 981	3 360 915	1 550	241 485	1 946 246	6 945	666 466	5 307 161
Eastern Cape	2020	130	10 654	60 477	156	18 833	122 644	286	29 487	183 121
	2021	140	11 375	73 656	250	34 830	237 568	390	46 205	311 224
	2022	369	19 154	123 967	171	34 495	247 081	540	53 649	371 048
Northern Cape	2020	0	0	0	22	1 761	13 806	22	1 761	13 806
	2021	0	0	0	32	3 782	24 459	32	3 782	24 459
	2022	18	1 311	10 623	24	4 818	30 904	42	6 129	41 527
Free State	2020	0	0	0	36	10 313	83 246	36	10 313	83 246
	2021	41	4 277	34 080	2	372	2 690	43	4 649	36 770
	2022	0	0	0	2	355	2 044	2	355	2 044
KwaZulu-Natal	2020	1 008	105 705	1 188 827	552	74 318	682 326	1 560	180 023	1 871 153
	2021	772	86 309	954 078	485	68 269	556 753	1 257	154 578	1 510 831
	2022	1 992	181 561	2 100 896	415	78 495	645 608	2 407	260 056	2 746 504
North West	2020	315	27 758	188 028	106	13 009	87 713	421	40 767	275 741
	2021	145	13 012	83 812	73	12 222	82 429	218	25 234	166 241
	2022	118	9 242	55 926	76	10 827	70 110	194	20 069	126 036
Gauteng	2020	590	40 715	461 740	3 306	475 835	4 148 688	3 896	516 550	4 610 428
	2021	1 207	91 221	1 058 996	4 578	506 208	4 580 716	5 785	597 429	5 639 712
	2022	911	60 835	656 404	3 171	380 357	3 659 723	4 082	441 192	4 316 127
Mpumalanga	2020	115	9 971	62 863	51	5 980	33 294	166	15 951	96 157
	2021	64	3 795	26 986	54	9 016	50 241	118	12 811	77 227
	2022	37	2 781	20 308	22	3 102	20 270	59	5 883	40 578



**Table 10 – Number, square metres and value of flats and townhouses reported as completed to municipalities by province (concluded)**

Municipal reporting aggregated to provincial level by year		Flats			Townhouses			Flats and townhouses reported as completed to municipalities		
		Number of units	Total square metres	Total value R'000	Number of units	Total square metres	Total value R'000	Number of units	Total square metres	Total value R'000
Limpopo	2020	112	6 961	36 767	170	20 271	117 682	282	27 232	154 449
	2021	18	1 339	8 074	195	20 719	122 500	213	22 058	130 574
	2022	48	4 032	28 128	126	23 085	138 460	174	27 117	166 588
South Africa	2020	5 632	506 062	4 479 664	5 067	753 790	6 329 570	10 699	1 259 852	10 809 234
	2021	8 921	662 133	5 744 755	7 118	861 412	7 256 593	16 039	1 523 545	13 001 348
	2022	8 888	703 897	6 357 167	5 557	777 019	6 760 446	14 445	1 480 916	13 117 613

**Table 11.1 – Number, square metres and value of non-residential buildings reported as completed to municipalities by province: office and banking space, shopping space and industrial and warehouse space**

Municipal reporting aggregated to provincial level by year		Non-residential buildings								
		Office and banking space			Shopping space			Industrial and warehouse space		
		Number of buildings	Total square metres	Total value R'000	Number of buildings	Total square metres	Total value R'000	Number of buildings	Total square metres	Total value R'000
Western Cape	2020	22	88 231	713 491	38	108 930	839 849	104	190 149	1 284 734
	2021	29	106 264	856 623	49	116 682	948 343	152	354 284	2 453 624
	2022	60	75 130	598 554	40	97 415	796 572	159	294 938	2 059 435
Eastern Cape	2020	8	2 879	19 198	18	12 180	67 854	28	90 423	593 482
	2021	15	16 297	109 584	19	22 657	135 742	28	137 417	991 777
	2022	16	11 320	74 278	16	40 985	319 393	31	33 183	197 502
Northern Cape	2020	5	1 918	12 551	15	12 211	91 014	21	20 449	158 694
	2021	7	2 558	18 410	13	3 632	26 677	5	4 570	36 261
	2022	8	2 827	22 276	11	5 249	37 644	19	31 041	241 194
Free State	2020	2	6 713	54 187	2	3 620	28 517	9	16 444	127 891
	2021	1	147	1 091	7	2 685	14 522	8	8 307	56 509
	2022	3	1 160	7 052	4	1 524	9 236	3	3 278	23 728
KwaZulu-Natal	2020	17	31 880	316 107	21	21 304	167 837	50	425 098	2 558 685
	2021	19	36 337	337 632	57	114 854	1 053 196	73	155 370	964 133
	2022	8	11 248	118 772	44	84 621	782 598	92	330 647	2 029 804
North West	2020	5	5 785	35 774	10	21 516	140 758	7	10 017	53 036
	2021	3	7 339	42 368	15	123 149	733 882	10	11 508	75 345
	2022	4	1 382	8 068	15	49 288	367 444	16	19 887	135 110
Gauteng	2020	17	254 755	2 527 988	26	78 085	807 222	62	340 737	2 046 428
	2021	9	30 407	374 815	19	115 114	1 158 117	55	379 629	2 191 974
	2022	14	40 386	411 461	18	126 940	1 439 571	63	587 462	3 658 606
Mpumalanga	2020	3	3 681	18 924	19	38 231	276 368	19	21 457	147 517
	2021	10	8 893	69 218	8	15 910	101 842	8	11 111	66 666
	2022	7	3 334	20 526	7	24 633	147 789	15	16 423	134 102

**Table 11.1 – Number, square metres and value of non-residential buildings reported as completed to municipalities by province: office and banking space, shopping space and industrial and warehouse space (concluded)**

Municipal reporting aggregated to provincial level by year		Non-residential buildings								
		Office and banking space			Shopping space			Industrial and warehouse space		
		Number of buildings	Total square metres	Total value R'000	Number of buildings	Total square metres	Total value R'000	Number of buildings	Total square metres	Total value R'000
Limpopo	2020	5	8 766	52 595	16	6 407	41 658	18	38 357	221 191
	2021	6	2 139	13 123	28	16 721	99 866	23	19 540	114 844
	2022	12	4 664	28 468	58	64 686	464 290	31	37 719	237 252
South Africa	2020	84	404 608	3 750 815	165	302 484	2 461 077	318	1 153 131	7 191 658
	2021	99	210 381	1 822 864	215	531 404	4 272 187	362	1 081 736	6 951 133
	2022	132	151 451	1 289 455	213	495 341	4 364 537	429	1 354 578	8 716 733

**Table 11.2 – Number, square metres and value of non-residential buildings reported as completed to municipalities by province: schools, nursery schools, crèches, hospitals, churches, sports club, recreation clubs and all other space**

Municipal reporting aggregated to provincial level by year		Non-residential buildings											
		Schools, nursery schools, crèches and hospitals			Churches, sport and recreation clubs			All other non-residential space			Non-residential buildings reported as completed to municipalities <sup>1</sup>		
		Number of buildings	Total square metres	Total value R'000	Number of buildings	Total square metres	Total value R'000	Number of buildings	Total square metres	Total value R'000	Number of buildings	Total square metres	Total value R'000
Western Cape	2020	19	42 451	302 915	14	9 794	65 869	29	24 831	171 692	226	464 386	3 378 550
	2021	24	31 311	225 216	13	12 890	90 142	63	18 710	119 406	330	640 141	4 693 354
	2022	24	39 245	278 150	33	20 849	139 749	87	92 400	716 363	403	619 977	4 588 823
Eastern Cape	2020	7	8 652	52 123	11	6 355	37 241	3	214	1 127	75	120 703	771 025
	2021	8	17 837	131 264	8	4 510	27 883	1	35	245	79	198 753	1 396 495
	2022	10	34 423	258 823	10	5 253	32 152	10	2 994	19 477	93	128 158	901 625
Northern Cape	2020	2	469	3 301	5	2 257	16 502	0	0	0	48	37 304	282 062
	2021	1	3 133	20 177	10	2 056	14 018	0	0	0	36	15 949	115 543
	2022	1	120	600	1	202	1 637	1	240	2 259	41	39 679	305 610
Free State	2020	0	0	0	1	536	2 700	0	0	0	14	27 313	213 295
	2021	1	4 235	37 937	2	489	2 624	1	63	440	20	15 926	113 123
	2022	0	0	0	3	674	3 885	0	0	0	13	6 636	43 901
KwaZulu-Natal	2020	4	8 072	89 450	5	6 110	39 632	2	253	2 884	99	492 717	3 174 595
	2021	6	3 778	29 374	4	3 440	21 920	0	0	0	159	313 779	2 406 255
	2022	12	21 234	202 463	13	6 222	54 630	5	1 647	4 402	174	455 619	3 192 669
North West	2020	2	2 194	12 255	1	357	1 479	0	0	0	25	39 869	243 302
	2021	0	0	0	3	5 561	30 206	0	0	0	31	147 557	881 801
	2022	6	15 375	89 898	4	2 027	11 456	3	2 225	15 555	48	90 184	627 531
Gauteng	2020	9	19 476	154 128	3	2 045	14 208	4	1 278	11 692	121	696 376	5 561 666
	2021	14	53 158	505 112	7	16 418	101 889	6	8 061	68 963	110	602 787	4 400 870
	2022	10	39 874	354 049	3	1 282	12 432	6	3 199	24 854	114	799 143	5 900 973
Mpumalanga	2020	6	10 716	79 631	4	1 949	11 570	3	183	992	54	76 217	535 002
	2021	6	2 960	16 407	4	5 551	33 349	0	0	0	36	44 425	287 482
	2022	5	9 399	77 363	6	1 647	11 857	16	1 600	9 600	56	57 036	401 237

<sup>1</sup> Non-residential buildings include office and banking space, shopping space, industrial and warehouse space, schools, nursery schools, crèches, hospitals, churches, sport clubs, recreation clubs and all other space – see Tables 11.1 and 11.2.

**Table 11.2 – Number, square metres and value of non-residential buildings reported as completed to municipalities by province: schools, nursery schools, crèches, hospitals, churches, sports club, recreation clubs and all other space (concluded)**

Municipal reporting aggregated to provincial level by year		Non-residential buildings											
		Schools, nursery schools, crèches and hospitals			Churches, sport and recreation clubs			All other non-residential space			Non-residential buildings reported as completed to municipalities <sup>1</sup>		
		Number of buildings	Total square metres	Total value R'000	Number of buildings	Total square metres	Total value R'000	Number of buildings	Total square metres	Total value R'000	Number of buildings	Total square metres	Total value R'000
Limpopo	2020	3	6 055	33 190	4	3 747	21 973	2	1 926	11 165	48	65 258	381 772
	2021	3	1 345	6 725	5	3 874	22 895	3	1 118	6 458	68	44 737	263 911
	2022	10	17 238	97 794	7	3 780	18 900	16	17 649	91 075	134	145 736	937 779
South Africa	2020	52	98 085	726 993	48	33 150	211 174	43	28 685	199 552	710	2 020 143	14 541 269
	2021	63	117 757	972 212	56	54 789	344 926	74	27 987	195 512	869	2 024 054	14 558 834
	2022	78	176 908	1 359 140	80	41 936	286 698	144	121 954	883 585	1 076	2 342 168	16 900 148

<sup>1</sup> Non-residential buildings include office and banking space, shopping space, industrial and warehouse space, schools, nursery schools, crèches, hospitals, churches, sport clubs, recreation clubs and all other space – see Tables 11.1 and 11.2.

**Table 12 – Number, square metres and value of additions and alterations reported as completed to municipalities by province**

Municipal reporting aggregated to provincial level by year		Additions and alterations to residential buildings			Additions and alterations to non-residential buildings			Internal alterations	Additions and alterations reported as completed to municipalities		
		Number of plans	Total square metres	Total value R'000	Number of plans	Total square metres	Total value R'000	Total value R'000	Number of plans	Total square metres	Total value R'000
Western Cape	2020	6 521	487 748	3 530 690	543	228 397	1 606 254	1 120 749	7 064	716 145	6 257 693
	2021	9 023	650 391	4 391 208	815	301 489	2 158 134	1 306 339	9 838	951 880	7 855 681
	2022	14 022	1 055 995	7 336 689	768	307 470	2 448 412	1 035 147	14 790	1 363 465	10 820 248
Eastern Cape	2020	1 415	97 251	657 922	81	28 311	184 915	40 067	1 496	125 562	882 904
	2021	1 580	124 672	864 844	112	25 267	181 537	87 342	1 692	149 939	1 133 723
	2022	1 393	132 700	950 212	307	80 686	579 525	37 143	1 700	213 386	1 566 880
Northern Cape	2020	784	42 290	302 164	17	9 663	77 356	3 261	801	51 953	382 781
	2021	523	42 867	331 593	31	10 496	85 393	4 846	554	53 363	421 832
	2022	586	48 112	396 295	23	6 076	48 603	5 221	609	54 188	450 119
Free State	2020	200	14 502	85 647	13	4 601	33 724	13 493	213	19 103	132 864
	2021	341	26 566	168 155	7	737	4 736	3 759	348	27 303	176 650
	2022	344	23 801	157 031	15	4 096	31 462	3 837	359	27 897	192 330
KwaZulu-Natal	2020	1 110	93 917	968 046	71	32 734	349 810	72 473	1 181	126 651	1 390 329
	2021	1 305	125 644	1 371 345	112	57 391	597 552	68 739	1 417	183 035	2 037 636
	2022	1 142	104 744	1 111 313	117	38 789	403 400	129 665	1 259	143 533	1 644 378
North West	2020	314	30 794	185 755	21	5 769	39 285	19 360	335	36 563	244 400
	2021	337	28 467	170 707	15	16 175	100 948	47 362	352	44 642	319 017
	2022	261	22 335	132 544	21	8 898	57 209	30 782	282	31 233	220 535
Gauteng	2020	1 344	146 852	1 209 072	83	69 515	600 914	34 283	1 427	216 367	1 844 269
	2021	1 869	205 123	1 748 400	79	90 379	658 871	27 144	1 948	295 502	2 434 415
	2022	1 759	203 225	1 870 835	88	80 204	607 257	38 672	1 847	283 429	2 516 764
Mpumalanga	2020	465	29 423	176 097	32	15 444	98 616	119 717	497	44 867	394 430
	2021	309	23 419	157 248	14	5 680	35 984	92 164	323	29 099	285 396
	2022	282	23 076	158 063	21	7 626	51 298	25 716	303	30 702	235 077

**Table 12 – Number, square metres and value of additions and alterations reported as completed to municipalities by province (concluded)**

Municipal reporting aggregated to provincial level by year		Additions and alterations to residential buildings			Additions and alterations to non-residential buildings			Internal alterations	Additions and alterations reported as completed to municipalities		
		Number of plans	Total square metres	Total value R'000	Number of plans	Total square metres	Total value R'000	Total value R'000	Number of plans	Total square metres	Total value R'000
Limpopo	2020	200	15 115	86 912	27	11 961	70 052	23 485	227	27 076	180 449
	2021	268	18 089	112 074	26	9 496	65 766	25 302	294	27 585	203 142
	2022	183	22 129	139 507	25	15 897	103 034	11 756	208	38 026	254 297
South Africa	2020	12 353	957 892	7 202 305	888	406 395	3 060 926	1 446 888	13 241	1 364 287	11 710 119
	2021	15 555	1 245 238	9 315 574	1 211	517 110	3 888 921	1 662 997	16 766	1 762 348	14 867 492
	2022	19 972	1 636 117	12 252 489	1 385	549 742	4 330 200	1 317 939	21 357	2 185 859	17 900 628

**Municipalities covered in the monthly and  
annual surveys by province**



**Table 13 – Municipalities covered in the monthly and annual surveys by province: Western Cape**

<b>Municipality</b>	<b>Main towns/areas within municipal boundaries</b>	<b>District municipality</b>
Beaufort West <sup>2</sup>	Beaufort West	Central Karoo
Bergrivier <sup>2</sup>	Aurora, Piketberg, Porterville, Redelinghuys, Velddrif	West Coast
Bitou <sup>1</sup>	Plettenberg Bay	Eden
Breede Valley <sup>1</sup>	De Doorns, Rawsonville, Touws River, Worcester	Cape Winelands
Cape Agulhas <sup>2</sup>	Bredasdorp, Napier, Struisbaai	Overberg
Cederberg <sup>2</sup>	Cederberg, Citrusdal, Clanwilliam, Graafwater, Lamberts Bay, Leipoldtville	West Coast
City of Cape Town <sup>1</sup>	Bellville, Blue Downs, Brackenfell, Cape Town City Centre, Durbanville, Eersterivier, Fish Hoek, Goodwood, Gordon's Bay, Gugulethu, Khayelitsha, Kraaifontein, Kuilsrivier, Langa, Mfuleni, Milnerton, Mitchells Plain, Nyanga, Parow, Plumstead, Simon's Town, Somerset West, Strand	City of Cape Town
Drakenstein <sup>1</sup>	Blouville, Hermon, Paarl, Soetendal, Wellington	Cape Winelands
George <sup>1</sup>	George, Herolds Bay, Pacaltsdorp, Wilderness	Eden
Hessequa <sup>2</sup>	Albertinia, Gouritsmond, Heidelberg, Riversdale, Slangrivier, Stilbaai	Eden
Kannaland <sup>2</sup>	Calitzdorp, Ladismith, Van Wyksdorp, Zoar	Eden
Knysna <sup>1</sup>	Knysna, Sedgefield	Eden
Laingsburg <sup>2</sup>	Laingsburg	Central Karoo
Langeberg <sup>2</sup>	Ashton, Bonnievale, McGregor, Montagu, Robertson	Cape Winelands
Matzikama <sup>2</sup>	Doringbaai, Klawer, Lutzville, Strandfontein, Van Rhynsdorp, Vredendal	West Coast
Mossel Bay <sup>1</sup>	Groot Brakrivier, Herbertsdale, Klein Brakrivier, Mossel Bay	Eden
Oudtshoorn <sup>1</sup>	De Rust, Dysselsdorp, Oudtshoorn	Eden

<sup>1</sup> Included in the monthly survey.<sup>2</sup> Included in the annual survey.

**Table 13 – Municipalities covered in the monthly and annual surveys by province: Western Cape (concluded)**

<b>Municipality</b>	<b>Main towns/areas within municipal boundaries</b>	<b>District municipality</b>
Overstrand <sup>1</sup>	Betty's Bay, Fisherhaven, Gansbaai, Hangklip, Hawston, Hermanus, Kleinmond, Onrus, Rooiels Bay, Stanford, Vermont	Overberg
Prince Albert <sup>2</sup>	Leeu-Gamka, Prince Albert	Central Karoo
Saldanha Bay <sup>1</sup>	Hopefield, Langebaan, Saldanha, Vredenburg	West Coast
Stellenbosch <sup>1</sup>	Franschhoek, Pniel, Stellenbosch	Cape Winelands
Swartland <sup>1</sup>	Darling, Koringberg, Malmesbury, Moorreesburg, Yzerfontein	West Coast
Swellendam <sup>2</sup>	Barrydale, Buffeljagsrivier, Stormsvlei, Suurbraak, Swellendam	Overberg
Theewaterskloof <sup>2</sup>	Caledon, Genadendal, Grabouw, Greyton, Riviersonderend, Villiersdorp	Overberg
Witzenberg <sup>2</sup>	Ceres, Prince Alfred Hamlet, Tulbagh, Wolseley	Cape Winelands

<sup>1</sup> Included in the monthly survey.

<sup>2</sup> Included in the annual survey.

**Table 14 – Municipalities covered in the monthly and annual surveys by province: Eastern Cape**

<b>Municipality</b>	<b>Main towns/areas within municipal boundaries</b>	<b>District municipality</b>
Amahlathi <sup>2</sup>	Cathcart, Kei Road, Keiskammahoek, Stutterheim	Amathole
Blue Crane Route <sup>2</sup>	Cookhouse, Pearston, Somerset East	Sarah Baartman
Buffalo City <sup>1</sup>	Beacon Bay, Bisho, East London, Gonubie, Mdantsane, Qonce, Zwelitsha	Buffalo City
Dr. Beyers Naude <sup>2</sup>	Aberdeen, Graaff-Reinet, Jansenville, Kendrew, Klipplaat, Nieu-Bethesda, Rietbron, Steytlerville, Waterford, Willowmore	Sarah Baartman
Elundini <sup>2</sup>	Maclear, Mount Fletcher, Ugie	Joe Gqabi
Emalahleni <sup>2</sup>	Dordrecht, Indwe, Lady Frere	Chris Hani
Engcobo <sup>2</sup>	Coghlan, Langdon, Ngcobo, Whitmore	Chris Hani
Enoch Mgijima <sup>1</sup>	Hofmeyr, Molteno, Komani, Sterkstroom, Stormberg, Sada, Spring Valley, Tarkastad, Whittlesea	Chris Hani
Great Kei <sup>2</sup>	Kei Mouth, Komga	Amathole
Ingquza Hill <sup>2</sup>	Flagstaff, Lusikisiki	OR Tambo
Intsika Yethu <sup>2</sup>	Cofimvaba, Qombolo, Tsomo	Chris Hani
Inxuba Yethemba <sup>2</sup>	Cradock, Middelburg	Chris Hani
King Sabata Dalindyebo <sup>1</sup>	Mqanduli, Mthatha	OR Tambo

<sup>1</sup> Included in the monthly survey.

<sup>2</sup> Included in the annual survey.

**Table 14 – Municipalities covered in the monthly and annual surveys by province: Eastern Cape (continued)**

<b>Municipality</b>	<b>Main towns/areas within municipal boundaries</b>	<b>District municipality</b>
Kou-Kamma <sup>2</sup>	Joubertina, Kareedouw	Sarah Baartman
Kouga <sup>1</sup>	Cape St Francis, Hankey, Humansdorp, Jeffreys Bay, Oyster Bay, Patensie, St Francis Bay	Sarah Baartman
Makana <sup>1</sup>	Alicedale, Makhandla, Riebeeck East	Sarah Baartman
Matatiele <sup>2</sup>	Cedarville, Matatiele	Alfred Nzo
Mbhashe <sup>2</sup>	Elliotdale, Dutywa, Willowdale	Amathole
Mbizana <sup>2</sup>	Bizana	OR Tambo
Mhlontlo <sup>2</sup>	Qumbu, Sidwadweni, St Cuthberts, Tsolo	OR Tambo
Mnquma <sup>2</sup>	Butterworth, Centane, Ngqamakhwe	Amathole
Ndlambe <sup>1</sup>	Alexandria, Bathurst, Kenton-on-Sea, Port Alfred	Sarah Baartman
Nelson Mandela Bay <sup>1</sup>	Despatch, Gqeberha, Uitenhage	Nelson Mandela Bay
Ngqushwa <sup>2</sup>	Hamburg, Peddie	Amathole
Ntabankulu <sup>2</sup>	Ntabankulu	OR Tambo
Nyandeni <sup>2</sup>	Libode, Misty Mountain, Ngqeleni, Nobantu, Old Bunting, Stoneyridge, Tshani	OR Tambo

<sup>1</sup> Included in the monthly survey.

<sup>2</sup> Included in the annual survey.

**Table 14 – Municipalities covered in the monthly and annual surveys by province: Eastern Cape (concluded)**

<b>Municipality</b>	<b>Main towns/areas within municipal boundaries</b>	<b>District municipality</b>
Port St Johns <sup>2</sup>	Gemvale, Ntshilini, Port St Johns, Tombo	OR Tambo
Raymond Mhlaba <sup>2</sup>	Adelaide, Alice, Bedford, Fort Beaufort, Hogsback, Middeldrift, Seymour	Amathole
Sakhisizwe <sup>2</sup>	Cala, Elliot	Chris Hani
Senqu <sup>2</sup>	Barkly East, Lady Grey, Rhodes, Rossouw, Sterkspruit	Joe Gqabi
Sundays River Valley <sup>2</sup>	Kirkwood, Paterson	Sarah Baartman
Umzimvubu <sup>2</sup>	Mount Ayliff, Mount Frere	Alfred Nzo
Walter Sisulu <sup>1</sup>	Aliwal North, Burgersdorp, Jamestown, Knapdaar, Oviston, Steynsburg, Venterstad	Joe Gqabi

<sup>1</sup> Included in the monthly survey.

<sup>2</sup> Included in the annual survey.

**Table 15 – Municipalities covered in the monthly and annual surveys by province: Northern Cape**

<b>Municipality</b>	<b>Main towns/areas within municipal boundaries</b>	<b>District municipality</b>
!Kheis <sup>2</sup>	Boegoeberg, Groblershoop, Kleinbegin, Wegdraai	ZF Mgcawu
Dawid Kruiper <sup>1</sup>	Dagbreek, Gelukspruit, Karos, Louisvale, Sprigg, Upington	ZF Mgcawu
Dikgatlong <sup>2</sup>	Barkly West, Delportshoop, Elandsdrift, Longlands, Mount Rupert, Windsorton	Frances Baard
Emthanjeni <sup>2</sup>	Britstown, De Aar, Hanover	Pixley ka Seme
Ga-Segonyana <sup>1</sup>	Bekker, Ga-Mopedi, Gathlose, Kuruman, Mothibistad, Seoding	John Taolo Gaetsewe
Gamagara <sup>2</sup>	Dibeng, Kathu, Sishen	John Taolo Gaetsewe
Hantam <sup>2</sup>	Brandkop, Brandvlei, Calvinia, Hantam, Kanakies, Loeriesfontein, Niewoudtville	Namakwa
Joe Morolong <sup>2</sup>	Bendell, Bothithong, Ditshipeng, Maswehatshe, Metsemantsi, Tsineng	John Taolo Gaetsewe
Kai !Garib <sup>1</sup>	Kakamas, Keimoes, Kenhardt	ZF Mgcawu
Kamiesberg <sup>2</sup>	Garies, Hondeklipbaai, Kamieskroon, Leliefontein, Soebatsfontein	Namakwa
Kareeberg <sup>2</sup>	Carnarvon, Vosburg, Vanwyksvlei	Pixley ka Seme
Karoo Hoogland <sup>2</sup>	Fraserburg, Sutherland, Williston	Namakwa
Kgatelopele <sup>2</sup>	Ariesfontein, Danielskuil, Lime Acres, Owendale, Papkuil, Silver Streams, Swartputs	ZF Mgcawu

<sup>1</sup> Included in the monthly survey.

<sup>2</sup> Included in the annual survey.

**Table 15 – Municipalities covered in the monthly and annual surveys by province: Northern Cape (concluded)**

Municipality	Main towns/areas within municipal boundaries	District municipality
Khâi-Ma <sup>2</sup>	Namies, Pella, Pofadder	Namakwa
Magareng <sup>2</sup>	Content, Warrenton, Windsorton Road	Frances Baard
Nama Khol <sup>2</sup>	Concordia, Komaggas, Okiep, Springbok, Steinkopf	Namakwa
Phokwane <sup>2</sup>	Ganspan, Hartswater, Jan Kempdorp, Pampierstad	Frances Baard
Renosterberg <sup>2</sup>	Petrusville, Philipstown, Potfontein, Poupán, Vanderkloof	Pixley ka Seme
Richtersveld <sup>2</sup>	Alexander Bay, Eksteenfontein, Kuboes, Lekkersing, Port Nolloth, Sendelingsdrif	Namakwa
SiyaThemba <sup>2</sup>	Marydale, Niekerkshoop, Prieska	Pixley ka Seme
Siyancuma <sup>2</sup>	Belmont, Campbell, Douglas, Griquatown, Salt Lake	Pixley ka Seme
Sol Plaatje <sup>1</sup>	Kenilworth, Kimberley, Modderrivier, Ritchie, Riverton, Spytfontein	Frances Baard
Thembelihle <sup>2</sup>	Hopetown, Kraankuil, Orania, Oranjerivier, Strydenburg	Pixley ka Seme
Tsantsabane <sup>2</sup>	Beeshoek, Glosam, Postmasburg	ZF Mgcau
Ubuntu <sup>2</sup>	Loxton, Victoria West, Richmond	Pixley ka Seme
Umsobomvu <sup>2</sup>	Agtertang, Colesberg, Norvalspont, Noupoort	Pixley ka Seme

<sup>1</sup> Included in the monthly survey.<sup>2</sup> Included in the annual survey.

**Table 16 – Municipalities covered in the monthly and annual surveys by province: Free State**

<b>Municipality</b>	<b>Main towns/areas within municipal boundaries</b>	<b>District municipality</b>
Dihlabeng <sup>1</sup>	Bethlehem, Bohlokong, Clarens, Fouriesburg, Paul Roux, Rosendal	Thabo Mofutsanyana
Kopanong <sup>2</sup>	Bethulie, Edenburg, Fauresmith, Gariiep Dam, Jagersfontein, Philippolis, Reddersburg, Springfontein, Trompsburg	Xhariep
Letsemeng <sup>2</sup>	Jacobsdal, Koffiefontein, Luckhoff, Oppermans, Petrusburg	Xhariep
Mafube <sup>2</sup>	Cornelia, Frankfort, Namahadi, Roberts Drift, Tweeling, Villiers	Fezile Dabi
Maluti-a-Phofung <sup>1</sup>	Harrismith, Kestell, Phuthaditjhaba	Thabo Mofutsanyana
Mangaung <sup>1</sup>	Bloemfontein, Botshabelo, Thaba Nchu	Mangaung
Mantsopa <sup>1</sup>	Excelsior, Hobhouse, Ladybrand, Manyatseng, Thaba Phatshoa, Tweespruit	Thabo Mofutsanyana
Masilonyana <sup>2</sup>	Brandfort, Soutpan, Theunissen, Verkeerdevelei, Winburg	Lejweleputswa
Matjhabeng <sup>1</sup>	Allanridge, Hennenman, Kutlwanong, Meloding, Odendaalsrus, Thabong, Ventersburg, Virginia, Welkom	Lejweleputswa
Metsimaholo <sup>1</sup>	Deneysville, Oranjeville, Sasolburg	Fezile Dabi
Mohokare <sup>2</sup>	Rouxville, Smithfield, Zastron	Xhariep

<sup>1</sup> Included in the monthly survey.

<sup>2</sup> Included in the annual survey.



**Table 16 – Municipalities covered in the monthly and annual surveys by province: Free State (concluded)**

<b>Municipality</b>	<b>Main towns/areas within municipal boundaries</b>	<b>District municipality</b>
Moqhaka <sup>1</sup>	Kroonstad, Maokeng, Steynsrus, Viljoenskroon	Fezile Dabi
Nala <sup>2</sup>	Bothaville, Wesselsbron	Lejweleputswa
Ngwathe <sup>1</sup>	Edenville, Heilbron, Koppies, Parys, Vredefort	Fezile Dabi
Nketoana <sup>2</sup>	Arlington, Lindley, Petrus Steyn, Reitz	Thabo Mofutsanyana
Phumelela <sup>2</sup>	Memel, Vrede, Warden	Thabo Mofutsanyana
Setsoto <sup>2</sup>	Clocolan, Ficksburg, Marquard, Senekal	Thabo Mofutsanyana
Tokologo <sup>2</sup>	Boshof, Dealesville, Hertzogville, Wolwespruit	Lejweleputswa
Tswelopele <sup>2</sup>	Bultfontein, Hoopstad	Lejweleputswa

<sup>1</sup> Included in the monthly survey.

<sup>2</sup> Included in the annual survey.

**Table 17 – Municipalities covered in the monthly and annual surveys by province: KwaZulu-Natal**

<b>Municipality</b>	<b>Main towns/areas within municipal boundaries</b>	<b>District municipality</b>
AbaQulusi <sup>2</sup>	Alpha, Calvert, Gluckstadt, Hlobane, Louwsburg, Ngome, Swart Umfolozi, Vryheid	Zululand
Alfred Duma <sup>1</sup>	Colenso, Ekuvukeni, Etholeni, Ingwe, Kliprivier, Ladysmith, Limehill, Mabaso, Rockcliff, Sams Hoek	uThukela
Big 5 Hlabisa <sup>2</sup>	Hlabisa	uMkhanyakude
City of uMhlathuze <sup>1</sup>	Empangeni, Richards Bay	King Cetshwayo
Dannhauser <sup>2</sup>	Dannhauser, Hattingspruit	Amajuba
Dr Nkosazana Dlamini-Zuma <sup>2</sup>	Amangwane, Bulwer, Coleford, Creighton, Deepdale, Donnybrook, Himeville, Ncwadi, Pevensey, Sizanenjana, Underberg	Harry Gwala
eDumbe <sup>2</sup>	Bivane, Braunschweig, Grootspuit, Luneburg, Mpemvana, Paulpietersburg	Zululand
eMadlangeni <sup>2</sup>	Blood River, Groenvlei, Kingsley, Utrecht	Amajuba
Endumeni <sup>2</sup>	Dundee, Glencoe, Van Rooyen, Vant's Drift, Wasbank	Umzinyathi
eThekwini <sup>1</sup>	Amanzimtoti, Botha's Hill, Cato Ridge, Clermont, Drummond, Durban, Hillcrest, Inchanga, Kingsburgh, Kloof, KwaDabeka, KwaMakhutha, KwaMashu, Mount Edgecombe, Mpumalanga, New Germany, Pinetown, Queensburgh, Tongaat, Umdloti, Umhlanga, Umlazi, Verulam, Westville	eThekwini
Greater Kokstad <sup>1</sup>	Bonny Ridge, Franklin, Kingscote, Kokstad, New Amalfi, Swartberg	Harry Gwala
Impendle <sup>2</sup>	Boston, Impendle, Lower Loteni, Runnymede	uMgungundlovu
Inkosi Langalibalele <sup>2</sup>	Bhoshi, Ennersdale, Estcourt, Frere, KwaDlamini, Khwezi, Loskop, Lowlands, Ndaba, Rosedale, South Downs, Webesi, Weenen	uThukela

<sup>1</sup> Included in the monthly survey.

<sup>2</sup> Included in the annual survey.

**Table 17 – Municipalities covered in the monthly and annual surveys by province: KwaZulu-Natal (continued)**

<b>Municipality</b>	<b>Main towns/areas within municipal boundaries</b>	<b>District municipality</b>
Jozini <sup>2</sup>	Bayala, Ingwavuma, Jozini, Mkhuze, Ndumo, Ubombo	uMkhanyakude
KwaDukuza <sup>1</sup>	Ballito, Blythedale Beach, Shakaskraal, Stanger, Tinley Manor Beach, Zinkwazi Beach	Ilembe
Mandeni <sup>2</sup>	Isithebe, Mandeni, Newark, Nyoni, Sundumbili, Tugela, Tugela Mouth	Ilembe
Maphumulo <sup>2</sup>	Fort Mtombeni, Maphumulo, Ntunjambi, Otimati	Ilembe
Mkhambathini <sup>2</sup>	Camperdown, Edinglassie, Eston, Manderston, Mid-Illovo, Umgeni Dam, Umlaas Road	uMgungundlovu
Mpofana <sup>2</sup>	Hidcote, Middelrus, Mooi River, Redcliffe, Rietvlei, Rosetta, The Grove	uMgungundlovu
Msinga <sup>2</sup>	Elandskraal, Helpmekaar, Keate's Drift, Ngubevu, Pomeroy, Rorke's Drift, Tugela Ferry	Umzinyathi
Msunduzi <sup>1</sup>	Edendale, Ashburton, Pietermaritzburg	uMgungundlovu
Mthonjaneni <sup>2</sup>	Melmoth, Mthonjaneni, Mnanyando, Ndundulu	King Cetshwayo
Mtubatuba <sup>2</sup>	Mtubatuba, River View, St Lucia	uMkhanyakude
Ndwedwe <sup>2</sup>	Glendale, Ndwedwe, Nsuze	Ilembe
Newcastle <sup>1</sup>	Madadeni, Newcastle, Osizweni	Amajuba
Nkandla <sup>2</sup>	Dlolwana, Nkandla, Osborn	King Cetshwayo
Nongoma <sup>2</sup>	Nongoma, Thokazi	Zululand

<sup>1</sup> Included in the monthly survey.

<sup>2</sup> Included in the annual survey.

**Table 17 – Municipalities covered in the monthly and annual surveys by province: KwaZulu-Natal (continued)**

<b>Municipality</b>	<b>Main towns/areas within municipal boundaries</b>	<b>District municipality</b>
Nquthu <sup>2</sup>	Mangeni, Nomamba, Nquthu, Nondweni, Ntabebomvu, Silutshana	Umzinyathi
Okhahlamba <sup>2</sup>	Bergville, Cathkin Park, Winterton	uThukela
Ray Nkonyeni <sup>1</sup>	Hibberdene, Margate, Marina Beach, Munster, Port Edward, Port Shepstone, Ramsgate, Shelly Beach, Southbroom, St Michael's-on-Sea, Trafalgar, Uvongo	Ugu
Richmond <sup>2</sup>	Arnold's Hill, Byrne, Greenhill, Hella Hella, KwaMagoda, Ndaleni, Nelsrus, Richmond	uMgungundlovu
Ubuhlebezwe <sup>2</sup>	Highflats, Hlutankungu, Ixopo, Nhlavini	Harry Gwala
Ulundi <sup>2</sup>	Babanango, Ilangakazi, KwaCeza, Mahlabatini, Mpungamhlophe, Ulundi	Zululand
Umdoni <sup>1</sup>	Pennington, Scottburgh, Umzinto	Ugu
uMfolozi <sup>2</sup>	KwaMbonambi, Mposa, Teza	King Cetshwayo
uMhlabuyalingana <sup>2</sup>	Emanguzi, Mbazwana, Mseleni	uMkhanyakude
uMlalazi <sup>2</sup>	Amatikulu, Blackburn, Eshowe, Gingindlovu, Middledrift, Mtunzini, Nkwalini, Ntambanana, Umonywana	King Cetshwayo
uMngeni <sup>1</sup>	Hilton, Howick, Nottingham Road	uMgungundlovu
Umshwathi <sup>2</sup>	Albert Falls, Bruyns Hill, Dalton, Harburg, New Hanover, Wartburg	uMgungundlovu
Umsinga		Umzinyathi
Umuziwabantu <sup>2</sup>	Harding, Weza	Ugu
Umvoti <sup>2</sup>	Ahrens, Greytown, Jameson's Drift, Kranskop, Muden, Sevenoaks	Umzinyathi

<sup>1</sup> Included in the monthly survey.

<sup>2</sup> Included in the annual survey.

**Table 17 – Municipalities covered in the monthly and annual surveys by province: KwaZulu-Natal (concluded)**

<b>Municipality</b>	<b>Main towns/areas within municipal boundaries</b>	<b>District municipality</b>
Umzimkhulu <sup>2</sup>	Bisi, Bontrand, Riverside, Sneezewood, Stafford's Post, Umzimkhulu	Harry Gwala
Umzumbe <sup>2</sup>	Glen Echo, Hlokozi, Kwa-Dweshula, Mehlomnyama, Msinsini, Nyavini, Turton	Ugu
uPhongolo <sup>2</sup>	Candover, Golela, Kingholm, Magudu, Mahlangasi, Nkonkoni, Pongola	Zululand

<sup>2</sup> Included in the annual survey.

**Table 18 – Municipalities covered in the monthly and annual surveys by province: North West**

<b>Municipality</b>	<b>Main towns/areas within municipal boundaries</b>	<b>District municipality</b>
City of Matlosana <sup>1</sup>	Hartbeesfontein, Klerksdorp, Orkney, Stilfontein	Dr Kenneth Kaunda
Ditsobotla <sup>1</sup>	Coligny, Itsoseng, Lichtenburg	Ngaka Modiri Molema
Greater Taung <sup>2</sup>	Lykso, Madipelesa, Pudimoe, Reivilo, Steekdorings, Taung	Dr Ruth Segomotsi Mompati
JB Marks <sup>1</sup>	Potchefstroom, Ventersdorp	Dr Kenneth Kaunda
Kagisano-Molopo <sup>2</sup>	Alettasrus, Algiers, Coetzersdam, Craffhole, Geluk, Morokweng, Bray, Moloporivier, Pomfret, Vorstershoop, Vergeleë	Dr Ruth Segomotsi Mompati
Kgetlengrivier <sup>2</sup>	Derby, Koster, Lindleypoot, Millvale, Rusverby, Swartruggens	Bojanala Platinum
Lekwa-Teemane <sup>2</sup>	Bloemhof, Britten, Christiana	Dr Ruth Segomotsi Mompati
Madibeng <sup>1</sup>	Brits, De Wildt, Hartbeespoort, Letlhabile	Bojanala Platinum
Mahikeng <sup>1</sup>	Mahikeng, Ottoshoop	Ngaka Modiri Molema
Mamusa <sup>2</sup>	Amalia, Glaudina, Koosfontein, Mamusa (Schweizer-Reneke), Migdol	Dr Ruth Segomotsi Mompati
Maquassi Hills <sup>2</sup>	Leeudoringstad, Makwassie, Strydpoort, Witpoort, Wolmaransstad	Dr Kenneth Kaunda
Moretele <sup>2</sup>	KwaRatsiepane, Makapanstad, Swartbooistad	Bojanala Platinum

<sup>1</sup> Included in the monthly survey.

<sup>2</sup> Included in the annual survey.

**Table 18 – Municipalities covered in the monthly and annual surveys by province: North West (concluded)**

<b>Municipality</b>	<b>Main towns/areas within municipal boundaries</b>	<b>District municipality</b>
Moses Kotane <sup>2</sup>	Dwarsberg, Mabaalstad, Mabeskraal, Mogwase, Silkaatskop, Sun City	Bojanala Platinum
Naledi <sup>1</sup>	Stella, Vryburg	Dr Ruth Segomotsi Mompati
Ramotshere Moiloa <sup>1</sup>	Zeerust	Ngaka Modiri Molema
Ratlou <sup>2</sup>	Kraaipan, Madibogo, Setlagole	Ngaka Modiri Molema
Rustenburg <sup>1</sup>	Marikana, Rustenburg	Bojanala Platinum
Tswaing <sup>2</sup>	Delareyville, Gerdau, Ottosdal, Sannieshof	Ngaka Modiri Molema

<sup>1</sup> Included in the monthly survey.

<sup>2</sup> Included in the annual survey.

**Table 19 – Municipalities covered in the monthly and annual surveys by province: Gauteng**

<b>Municipality</b>	<b>Main towns/areas within municipal boundaries</b>	<b>District municipality</b>
City of Johannesburg <sup>1</sup>	Alexandra, Eikenhof, Eldorado Park, Ennerdale, Fourways, Florida, Grasmere, Halfway House, Honeydew, Johannesburg, Kyalami, Lawley Estate, Lenasia, Midrand, Modderfontein, Randburg, Randjiesfontein, Rivonia, Roodepoort, Sandton, Soweto, Van Wyksrust	City of Johannesburg
City of Tshwane <sup>1</sup>	Akasia, Atteridgeville, Babelegi, Bon Accord, Bronkhorstspuit, Centurion, Diloppe, Doornrandjies, Ekangala, Erasmia, Ga-Mokone, Ga-Rankuwa, Garsfontein, Hammanskraal, Irene, Klippan, Mabopane, Mamelodi, Onderstepoort, Pinedene, Pretoria, Pretoria North, Soshanguve, Temba, Tierpoort, Tswaing, Valhalla, Welbekend, Winterveld	City of Tshwane
Ekurhuleni <sup>1</sup>	Alberton, Bedfordview, Benoni, Boksburg, Brakpan, Daveyton, Duduza, Edenvale, Germiston, Kattlehong, Kempton Park, KwaThema, Nigel, Springs, Tembisa, Thokoza, Tsakane, Vosloorus	Ekurhuleni
Emfuleni <sup>1</sup>	Evaton, Boipatong, Bophelong, Sebokeng, Sharpeville, Vanderbijlpark, Vereeniging	Sedibeng
Lesedi <sup>1</sup>	Heidelberg, Rensburgdorp, Ratanda	Sedibeng
Merafong City <sup>1</sup>	Carletonville, Fochville, Khutsong	West Rand
Midvaal <sup>1</sup>	Daleside, De Deur, Henly-on-Klip, Highbury, Meyerton, Randvaal, Walkerville	Sedibeng
Mogale City <sup>1</sup>	Battery, Elberta, Hekpoort, Krugersdorp, Luipaardsvlei, Magaliesburg, Muldersdrift, Nooitgedacht, Thorndale	West Rand
Randfontein <sup>1</sup>	Finsbury, Kocksoord, Mohlakeng, Randfontein	West Rand
Westonaria <sup>1</sup>	Bekkersdal, Venterspos, Westonaria	West Rand

<sup>1</sup> Included in the monthly survey.



**Table 20 – Municipalities covered in the monthly and annual surveys by province: Mpumalanga**

<b>Municipality</b>	<b>Main towns/areas within municipal boundaries</b>	<b>District municipality</b>
Bushbuckridge <sup>2</sup>	Acornhoek, Dwarsloop, Mkhuhlu, Thulamahashe	Ehlanzeni
Chief Albert Luthuli <sup>2</sup>	Badplaas, Carolina, Hartbeeskop, Lochiel	Gert Sibande
City of Mbombela <sup>1</sup>	Hazyview, KaNyamazane, Nelspruit, White River	Ehlanzeni
Dipaleseng <sup>2</sup>	Balfour, Dasville, Greylingstad, Grootvlei, Rietbult Estate	Gert Sibande
Dr J S Moroka <sup>2</sup>	Siyabuswa	Nkangala
Dr Pixley Ka Isaka Seme <sup>2</sup>	Amersfoort, Latemanek, Perdekop, Seme (Volksrust), Wakkerstroom	Gert Sibande
Emakhazeni <sup>2</sup>	Belfast, Dullstroom, Machadodorp, Waterval-Boven, Waterval-Onder	Nkangala
Emalaheni <sup>1</sup>	KwaGuqa, Witbank	Nkangala
Govan Mbeki <sup>1</sup>	Bethal, Evander, Leandra, Secunda	Gert Sibande
Lekwa <sup>2</sup>	Bettiesdam, Holmdene, Maizefield, Meyersville, Morgenzon, Platrand, Standerton	Gert Sibande
Mkhondo <sup>2</sup>	Amsterdam, Anysspruit, Berbice, Comondale, Iswepe, Piet Retief, Wittenberg	Gert Sibande
Msukaligwa <sup>1</sup>	Breyton, Chrissiesmeer, Davel, Ermelo, Lothair, Sheepmoor, Warburton	Gert Sibande

<sup>1</sup> Included in the monthly survey.

<sup>2</sup> Included in the annual survey.

**Table 20 – Municipalities covered in the monthly and annual surveys by province: Mpumalanga (concluded)**

<b>Municipality</b>	<b>Main towns/areas within municipal boundaries</b>	<b>District municipality</b>
Nkomazi <sup>1</sup>	Hectorspruit, Komatipoort, Malelane, Marloth Park	Ehlanzeni
Steve Tshwete <sup>1</sup>	Hendrina, Mhluzi, Middelburg	Nkangala
Thaba Chweu <sup>2</sup>	Graskop, Lydenburg, Sabie	Ehlanzeni
Thembisile Hani <sup>2</sup>	KwaMhlanga, Moloto, Sybrandskraal	Nkangala
Victor Khanye <sup>1</sup>	Argent, Delmas, Eloff, Sundra	Nkangala

<sup>1</sup> Included in the monthly survey.

<sup>2</sup> Included in the annual survey.

**Table 21 – Municipalities covered in the monthly and annual surveys by province: Limpopo**

<b>Municipality</b>	<b>Main towns/areas within municipal boundaries</b>	<b>District municipality</b>
Ba-Phalaborwa <sup>2</sup>	Gravelotte, La Cotte, Phalaborwa	Mopani
Bela-Bela <sup>2</sup>	Bela-Bela, Mabula, Pienaarsrivier, Rust de Winter, Settlers	Waterberg
Blouberg <sup>2</sup>	Alldays, Blinkwater, Blouberg, Gregory, Senwabarwana	Capricorn
Elias Motsoaledi <sup>2</sup>	Dennilton, Groblersdal, Hlogotlou, Laersdrif, Maleoskop, Mossiesdal, Motetema, Rooikraal, Roosenekal	Sekhukhune
Ephraim Mogale <sup>2</sup>	Hereford, Marble Hall, Moganyaka, Tompi Seleka	Sekhukhune
Fetakgomo Tubatse <sup>2</sup>	Burgersfort, Mogaba, Morone, Orighstad, Steelpoort, Zeekoegat	Sekhukhune
Greater Giyani <sup>2</sup>	Dzumeri, Giyani, Nkomo, Phalakubeni	Mopani
Greater Letaba <sup>2</sup>	Modjadjiskloof, Ga-Kgapane, Mamaila, Mooketsi	Mopani
Greater Tzaneen <sup>1</sup>	Haenertsburg, Letsitele, Politsi, Rubbervale, Nkowankowa, Tzaneen	Mopani
Lepelle-Nkumpi <sup>2</sup>	Chuenespoort, Gompies, Lebowakgomo, Zebediela	Capricorn
Lephalale <sup>2</sup>	Baltimore, Lephalale, Matlabas, Swartwater, Tolwe	Waterberg
Makhado <sup>2</sup>	Carlow, Elim, Buysdorp, Levubu, Makhado, Mara	Vhembe
Makhuduthamaga <sup>2</sup>	Glen Cowie, Jane Furse, Malaita, Nebo, Phokwane, Sekhukhune	Sekhukhune
Maruleng <sup>2</sup>	Hoedspruit, Kampersrus, Lorraine, Mica, Olifantshoek, Trichardsdal	Mopani

<sup>1</sup> Included in the monthly survey.

<sup>2</sup> Included in the annual survey.

**Table 21 – Municipalities covered in the monthly and annual surveys by province: Limpopo (concluded)**

<b>Municipality</b>	<b>Main towns/areas within municipal boundaries</b>	<b>District municipality</b>
Modimolle <sup>1</sup>	Haakdoring, Mabaleng, Modimolle, Palala	Waterberg
Mogalakwena <sup>1</sup>	Drummondlea, Mahwelereng, Mokopane, Uitzicht	Waterberg
Molemole <sup>2</sup>	Blouhaak, Botlokwa, Bylsteel, Groot Spelonke, Kalkbank, Mogwadi, Morebeng, Munnik, Rita, Thorndale	Capricorn
Mookgophong <sup>1</sup>	Crecy, Immerpan, Mookgophong, Thusang	Waterberg
Musina <sup>1</sup>	Beitbridge, Bridgewater, Brombeek, Evangelina, Huntleigh, Mopane, Musina, Tshipise	Vhembe
Mutale <sup>2</sup>	Masisi, Mutale, Sagale Spa, Tshilamba	Vhembe
Polokwane <sup>1</sup>	Limburg, Mashashane, Matlala, Polokwane, Seshego	Capricorn
Thabazimbi <sup>1</sup>	Dwaalboom, Northam, Rooiberg, Thabazimbi	Waterberg
Thulamela <sup>2</sup>	Malamulele, Mavambe, Mhinga, Muswane, Thohoyandou	Vhembe

<sup>1</sup> Included in the monthly survey.

<sup>2</sup> Included in the annual survey.

## Explanatory notes

<b>Introduction</b>	1	Statistics South Africa (Stats SA) conducts a monthly survey of metropolitan municipalities and large local municipalities on building plans passed and buildings completed for the private sector. An annual survey of the remaining municipalities is conducted regarding buildings completed. This report contains buildings reported as completed to all municipalities, aggregated to provincial level for 2020, 2021 and 2022 – see Part 1 and Part 2. Municipal reporting for buildings completed are available in an Excel format from 2014 to 2022. The Excel files are available from Stats SA’s website on the publication page for Report-50-11-01 – Building statistics, under ‘Additional downloads’ on the following link: <a href="http://www.statssa.gov.za/?page_id=1854&amp;PPN=Report-50-11-01">http://www.statssa.gov.za/?page_id=1854&amp;PPN=Report-50-11-01</a> .
<b>Scope of the survey</b>	2	This survey covers municipalities conducting activities regarding: <ul style="list-style-type: none"> <li>• final inspection of completed buildings and issuing of occupation certificates.</li> </ul>
<b>Statistical unit</b>	3	The statistical units for the collection of information are metropolitan municipalities, local municipalities and district municipalities.
<b>Classification</b>	4	Building activities are classified in division five according to the 1993 edition of the <i>Standard Industrial Classification of All Economic Activities</i> (SIC), Fifth Edition, Report No. 09-90-02. The SIC is based on the 1990 <i>International Standard Industrial Classification of All Economic Activities</i> (ISIC) with suitable adaptations for local conditions.
<b>Survey methodology and design</b>	5	Stats SA conducts a monthly survey of metropolitan municipalities and large local municipalities on building plans passed and buildings completed. An annual survey of the remaining municipalities is conducted regarding buildings completed. Information regarding building plans passed and buildings completed for the private sector is collected by email and telephone.
<b>Comparison between building plans passed and buildings completed</b>	6	No direct comparison can be made between building plans passed and buildings completed for the following reasons: <ul style="list-style-type: none"> <li>• an unknown number of building plans are passed and afterwards not executed;</li> <li>• if building operations have not commenced within the first year after approval, building plans are resubmitted;</li> <li>• the time-lag between the date of passing of a building plan and the date of completion of the building varies considerably; and</li> <li>• according to municipalities, final inspections of completed buildings are not always executed and therefore not recorded as completed.</li> </ul>
<b>Collection rate</b>	7	The collection rate for the year 2022 was 76,0%.
<b>Revised figures</b>	8	Revised figures are mainly due to late submission of data to Stats SA, or respondents reporting revisions or corrections to their figures. Figures for 2020, 2021 and 2022 are preliminary and subject to revision.
<b>Number of dwelling-houses</b>	9	The number of dwelling-houses is shown and not the number of plans passed or completed, since one plan may cover more than one dwelling-house.

**Related publications**

**10** Users may also wish to refer to the following publications:

- P5041.1 *Selected building statistics of the private sector as reported by local government institutions* issued monthly.
- P5041.3 *Selected building statistics of the private sector as reported by local government institutions* issued annually.
- P9101.2 *Actual and Expected Expenditure on Construction by the Public Sector per Region* issued annually.

The following reports contain information of building plans passed (monthly survey) and buildings completed (monthly and annual surveys):

- Report No. 50-11-01 (1996) - with summaries from 1995.
- Report No. 50-11-01 (1997) - with summaries from 1995.
- Report No. 50-11-01 (1998) - with summaries from 1996.
- Report No. 50-11-01 (2001) - with summaries from 1999.
- Report No. 50-11-01 (2002) - with summaries from 2000.

The following reports contain information of buildings completed:

- Report No. 50-11-01 (2003) - with summaries from 2001.
- Report No. 50-11-01 (2004) - with summaries from 2002.
- Report No. 50-11-01 (2005) - with summaries from 2003.
- Report No. 50-11-01 (2006) - with summaries from 2004.
- Report No. 50-11-01 (2007) - with summaries from 2005.
- Report No. 50-11-01 (2008) - with summaries from 2006.
- Report No. 50-11-01 (2009) - with summaries from 2007.
- Report No. 50-11-01 (2010) - with summaries from 2008.
- Report No. 50-11-01 (2011) - with summaries from 2009.
- Report No. 50-11-01 (2012) - with summaries from 2010.
- Report No. 50-11-01 (2013) - with summaries from 2011.
- Report No. 50-11-01 (2014) - with summaries from 2012.
- Report No. 50-11-01 (2015) - with summaries from 2013.
- Report No. 50-11-01 (2016) - with summaries from 2014.
- Report No. 50-11-01 (2017) - with summaries from 2015.
- Report No. 50-11-01 (2018) - with summaries from 2016.
- Report No. 50-11-01 (2019) - with summaries from 2017.
- Report No. 50-11-01 (2020) - with summaries from 2018.
- Report No. 50-11-01 (2021) - with summaries from 2019.

**Reliability of estimates**

**11** Inaccuracies may occur because of imperfections in reporting by municipalities. Every effort is made to reduce errors to a minimum by carefully editing and evaluating data and querying of data.

**Rounding-off of figures**

**12** The figures in the tables have, where necessary, been rounded off to the nearest digit shown. There may, therefore, be slight discrepancies between the sums of the constituent items and the totals shown.

**Symbols and abbreviations**

<b>13</b>	0	Nil or figure too small to publish
	*	Revised figures
	..	No data reported
	Stats SA	Statistics South Africa
	SIC	Standard Industrial Classification of All Economic Activities
	ISIC	International Standard Industrial Classification of All Economic Activities
	GDP	Gross domestic product
	DMA	District Management Area

## Glossary

<b>Additions and alterations</b>	Extensions to existing buildings as well as internal and external alterations of existing buildings.
<b>Annual percentage change</b>	Annual percentage change is the change in the value of buildings completed for a certain year compared with the value of buildings completed in a previous year expressed as a percentage.
<b>Blocks of flats</b>	High-density housing consisting of a number of self-contained dwelling-units with at least one living-room together with a kitchen and bathroom conjoined to similar units in one building.
<b>Dwelling-house</b>	A free-standing, complete structure on a separate stand or a self-contained dwelling-unit, e.g. granny flat, on the same premises as an existing residence. Out-buildings and garages are included.
<b>District municipality</b>	A municipality that has municipal executive and legislative authority in an area that includes more than one municipality, and which is described in Section 155(1) of the Constitution as a category C municipality (refer to Local Government: Municipal Structure Act, 1998 (Act No. 117 of 1998)).
<b>District Management Area</b>	<p>District municipalities are not in general responsible for passing of building plans or issuing of final occupation certificates. These functions are primarily the responsibility of the metropolitan municipalities and the local municipalities. However, district municipalities will execute these functions in the following cases:</p> <ul style="list-style-type: none"><li>• For rural areas that do not fall under the jurisdiction of either a metropolitan or local municipality. These areas are referred to as District Management Areas (DMA) and are managed directly by district municipalities.</li><li>• Where local municipalities have requested the district municipality to perform this function. In such cases an agreement known as a service level agreement is reached between the local municipality and the district municipality. The local municipality will pay a fee to the district municipality for the service rendered.</li></ul>
<b>Local municipality</b>	A municipality that shares municipal executive and legislative authority in its area with a district municipality within whose area it falls, and which is described in section 155(1) of the Constitution as a category B municipality (refer to Local Government: Municipal Structure Act, 1998 (Act No. 117 of 1998)).
<b>Metropolitan municipality</b>	A municipality that has municipal executive and legislative authority in an area that includes more than one municipality, and which is described in section 155(1) of the Constitution as a category A municipality (refer to Local Government: Municipal Structure Act, 1998 (Act No. 117 of 1998)).
<b>Municipality</b>	A generic term describing the unit of government in the third sphere responsible for local government in a geographically demarcated area. It includes district, metropolitan and local municipalities.



<b>Non-residential buildings</b>	Factories and commercial, financial and other office buildings, as well as other buildings used for non-residential purposes, such as churches, halls, clubs, schools and hospitals.
<b>Other residential buildings</b>	Institutions for the disabled, boarding houses, hostels and tourism accommodation e.g. hotels, motels, guest-houses, holiday chalets, bed-and-breakfast accommodation and casinos.
<b>Reference period</b>	Reference period is a calendar year.
<b>Residential buildings</b>	Dwelling-houses, flats, townhouses and other residential buildings.
<b>Townhouses</b>	Multiple, medium-density dwelling-units including cluster housing, group housing, simplexes, duplexes, triplexes and other similar dwelling-units which are usually grouped together, with one level of each unit on ground level. This category excludes blocks of flats.