



stats sa

Department:
Statistics South Africa
REPUBLIC OF SOUTH AFRICA

Building statistics, 2020

Embargoed until:
31 August 2022
14:30

Report No. 50-11-01 (2020)

Statistics South Africa

Risenga Maluleke
Statistician-General

Dipalopalo tsa Aforikaborwa • Dipalopalo tsa Aforika Borwa • Ezazibalo zaseNingizimu Afrika • Tshitatistika Afrika Tshipembe • Tinhlayo Afrika-Dzonga

Statistieke Suid-Afrika • Dipalopalo tsa Aforika Borwa • Telubalo zaseNingizimu Afrika • EzeeNkcukacha maNani zoMzantsi Afrika • Iimbalobalo zeSewula Afrika

IMPROVING LIVES THROUGH DATA ECOSYSTEMS



Building statistics, 2020 / Statistics South Africa

Published by Statistics South Africa, Private Bag X44, Pretoria 0001

© Statistics South Africa, 2022

Users may apply or process this data, provided Statistics South Africa (Stats SA) is acknowledged as the original source of the data; that it is specified that the application and/or analysis is the result of the user's independent processing of the data; and that neither the basic data nor any reprocessed version or application thereof may be sold or offered for sale in any form whatsoever without prior permission from Stats SA.

Stats SA Library Cataloguing-in-Publication (CIP) Data

Building statistics, 2020 / Statistics South Africa. Pretoria: Statistics South Africa, 2022

Report No. 50-11-01 (2020)

64 pages

ISBN 978-0-621-50462-0

A complete set of Stats SA publications is available at Stats SA Library and the following libraries:

National Library of South Africa, Pretoria Division
National Library of South Africa, Cape Town Division
Library of Parliament, Cape Town
Bloemfontein Public Library
Natal Society Library, Pietermaritzburg
Johannesburg Public Library

Eastern Cape Library Services, Qonce
Central Regional Library, Polokwane
Central Reference Library, Mbombela
Central Reference Collection, Kimberley
Central Reference Library, Mmabatho

This report is available on the Stats SA website: www.statssa.gov.za

For technical enquiries, please contact:

Kurt Roach / Joyce Essel-Mensah

Tel.: 012 310 8211 / 082 888 2374

Email: kurtr@statssa.gov.za / joycee@statssa.gov.za

Contents

Introduction..... iii

Purpose of the surveys iii

Key findings for the monthly and annual surveys iv

List of detailed tables vii

List of municipalities covered in the monthly and annual surveys..... viii

Part 1 – Municipal reporting of buildings completed aggregated to provincial level: monthly survey

Table 1 to Table 6..... 1

Part 2 – Municipal reporting of buildings completed aggregated to provincial level: monthly and annual surveys

Table 7 to Table 12..... 15

Municipalities covered in the monthly and annual surveys by province

Table 13 to Table 21 29

Explanatory notes..... 49

Glossary 52

Introduction

Statistics South Africa (Stats SA) conducts a monthly survey of metropolitan municipalities and large local municipalities on building plans passed and buildings completed for the private sector. An annual survey of the remaining municipalities is conducted regarding buildings completed. The following information is presented in this report:

- In Part 1, Tables 1 to 6, information is published for the monthly survey on buildings completed by type of building at provincial level for 2018, 2019 and 2020.
- In Part 2, Tables 7 to 12, information is published for the monthly and annual surveys on buildings completed by type of building at provincial level for 2018, 2019 and 2020.
- Municipal reporting for buildings completed is available in Excel format from 2014 to 2020. The Excel files are available from Stats SA's website on the publication page for Report-50-11-01 – Building statistics, under 'Additional downloads' (see the link below).

http://www.statssa.gov.za/?page_id=1854&PPN=Report-50-11-01

Building plans passed and buildings reported as completed for 2021 (monthly survey only) were published in the annual statistical release P5041.3 – *Selected building statistics of the private sector as reported by local government institutions*, 2021 on 29 June 2022 and can be accessed on Stats SA's website, www.statssa.gov.za.

Purpose of the surveys

The results of these surveys are used in monitoring the state of the economy and the formulation of economic policy. The results are important inputs for estimating gross domestic product (GDP) and are extensively used by the private sector.

Table A – Value of buildings reported as completed to municipalities

Year	Monthly survey	Monthly and annual surveys	% contribution of monthly survey to total of monthly and annual surveys
	R million	R million	
2018	73 416,3	82 733,4	88,7
2019	88 978,7	97 240,8	91,5
2020	49 102,7	56 034,4	87,6

The percentage contribution of the total value of buildings completed as reported in the monthly survey compared with the value of monthly and annual surveys decreased by 3,9 percentage points from 91,5% in 2019 to 87,6% in 2020 (see Table A).

Key findings for the monthly and annual surveys

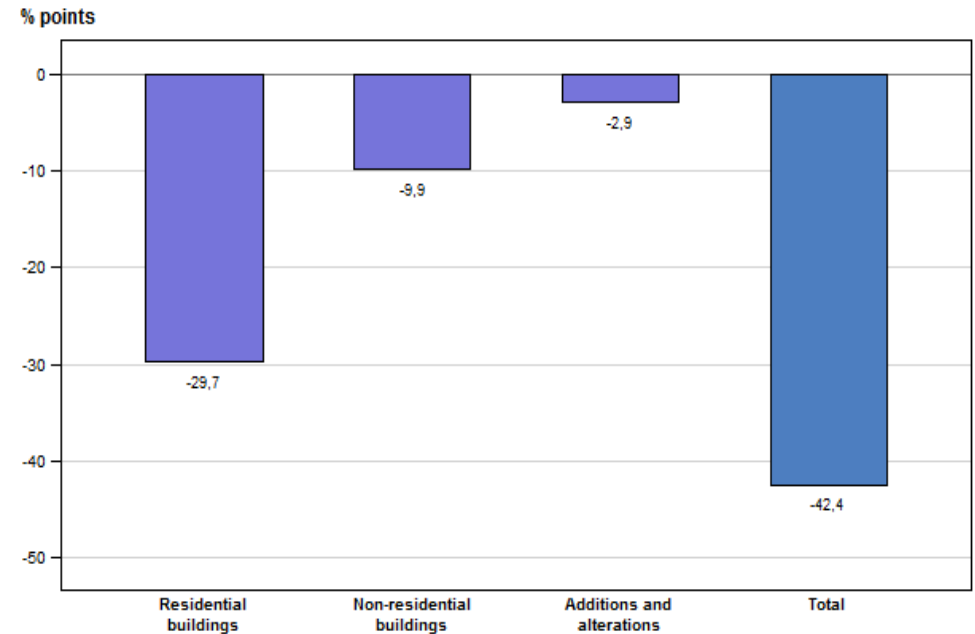
Table B – Selected key figures regarding buildings reported as completed (at current prices) for 2019 and 2020 by type of building

Estimates at current prices	2019	2020	% contribution to the total value of buildings completed during 2019	% change in the value of buildings completed between 2019 and 2020	Contribution (% points) ¹ to the % change between 2019 and 2020	Difference in the value of buildings completed between 2019 and 2020
	R million	R million				R million
Residential buildings	58 454,6	29 598,9	60,1	-49,4	-29,7	-28 855,7
Dwelling-houses	28 151,6	18 364,2	29,0	-34,8	-10,1	-9 787,4
Flats and townhouses	29 563,0	10 809,2	30,4	-63,4	-19,3	-18 753,8
Other residential buildings	740,0	425,4	0,8	-42,5	-0,3	-314,6
Non-residential buildings	24 270,1	14 719,5	25,0	-39,4	-9,9	-9 550,6
Office and banking space	6 065,1	3 750,8	6,2	-38,2	-2,4	-2 314,3
Shopping space	5 870,9	2 636,0	6,0	-55,1	-3,3	-3 234,9
Industrial space	9 342,5	7 194,9	9,6	-23,0	-2,2	-2 147,6
Other non-residential	2 991,6	1 137,7	3,1	-62,0	-1,9	-1 853,9
Additions and alterations	14 516,2	11 716,1	14,9	-19,3	-2,9	-2 800,1
Total²	97 240,8	56 034,4	100,0	-42,4	-42,4	-41 206,4

¹ The contribution (percentage points) is calculated by multiplying the percentage change of the type of building between 2019 and 2020 by the percentage contribution of the corresponding type of building to the total value of buildings completed during 2019, divided by 100.
² Figures have been rounded off.

As indicated in Table B, the value of buildings reported as completed to municipalities in the monthly and annual surveys decreased by 42,4% from R97 240,8 million in 2019 to R56 034,4 million in 2020. Decreases were reported for residential buildings (-49,4% or -R28 855,7 million), non-residential buildings (-39,4% or -R9 550,6 million) and additions and alterations (-19,3% or -R2 800,1 million).

Figure 1 – Contribution (percentage points) of type of building to the percentage change in the total value of buildings completed between 2019 and 2020



As indicated in Figure 1, negative contributions were made by residential buildings (contributing -29,7 percentage points), non-residential buildings (contributing -9,9 percentage points) and additions and alterations (contributing -2,9 percentage points) to the year-on-year growth rate of -42,4% in 2020.

Table C – Total value of buildings reported as completed (at current prices) for 2019 and 2020 by province

Estimates at current prices	2019	2020	% contribution to the total value of buildings completed 2019	% change between 2019 and 2020	Contribution (% points) ¹ to the percentage change in the value of buildings completed between 2019 and 2020	Difference in the value of buildings completed between 2019 and 2020
	R million	R million				
Western Cape	24 906,4	18 756,7	25,6	-24,7	-6,3	-6 149,7
Eastern Cape	4 687,2	2 805,5	4,8	-40,1	-1,9	-1 881,7
Northern Cape	1 012,6	1 144,9	1,0	13,1	0,1	132,3
Free State	936,7	886,5	1,0	-5,4	-0,1	-50,1
KwaZulu-Natal	14 067,4	9 211,4	14,5	-34,5	-5,0	-4 856,1
North West	2 250,1	1 580,1	2,3	-29,8	-0,7	-670,0
Gauteng	44 079,7	17 825,0	45,3	-59,6	-27,0	-26 254,7
Mpumalanga	3 214,1	2 101,8	3,3	-34,6	-1,1	-1 112,3
Limpopo	2 086,7	1 722,5	2,1	-17,5	-0,4	-364,1
Total²	97 240,8	56 034,4	100,0	-42,4	-42,4	-41 206,4

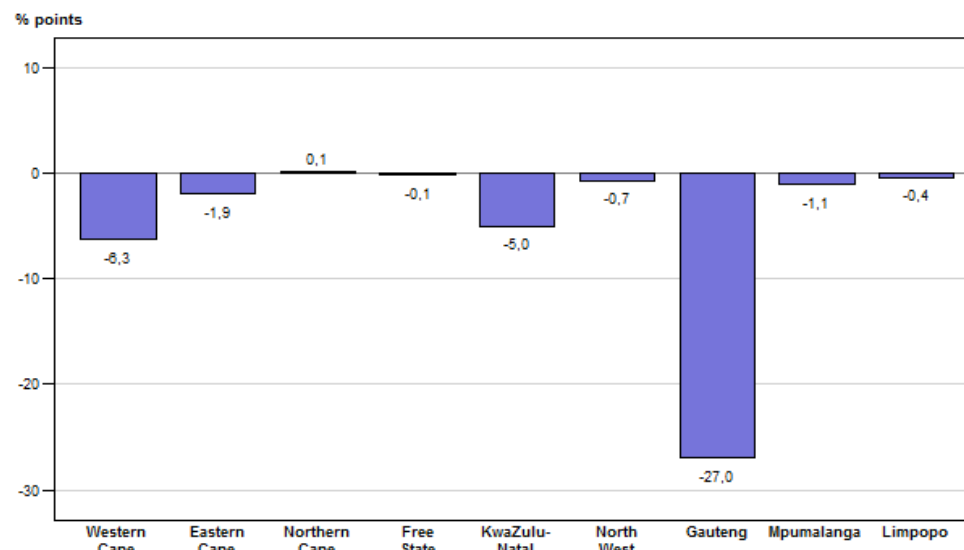
¹ The contribution (percentage points) is calculated by multiplying the percentage change of each province between 2019 and 2020 by the percentage contribution of the corresponding province to the total value of buildings completed during 2019, divided by 100.
² Figures have been rounded off.

Table C and Figure 2 reflect that the largest provincial contributors to the decrease of 42,4% between 2019 and 2020 were Gauteng (contributing -27,0 percentage points or -R26 254,7 million), Western Cape (contributing -6,3 percentage points or -R6 149,7 million) and KwaZulu-Natal (contributing -5,0 percentage points or -R4 856,1 million).

During 2020, Gauteng experienced year-on-year decreases in all three major categories, namely residential buildings (-65,2% or -R19 482,7 million), non-residential buildings (-50,7% or -R5 730,9 million) and additions and alterations (-36,1% or -R1 041,1 million).

Large decreases in non-residential buildings were reported for Western Cape (-42,0% or -R2 447,9 million) and KwaZulu-Natal (-32,4% or -R1 520,1 million) – see Table 7.

Figure 2 – Provincial contribution (percentage points) to the percentage change in the total value of buildings reported as completed between 2019 and 2020



Buildings reported as completed in Gauteng were to a large extent dominated by data recorded for City of Johannesburg, contributing 36,6% or R6 531,6 million to the total of R17 825,0 million reported for this province.

City of Johannesburg was the largest contributor to non-residential buildings (contributing 49,3% or R2 739,1 million), while City of Tshwane was the largest contributor to additions and alterations (contributing 37,0% or R682,9 million) and residential buildings (contributing 36,5% or R3 806,2 million) in Gauteng.

The largest contributor in all three major building categories reported as completed in Western Cape was City of Cape Town, with additions and alterations contributing 75,9% (R4 746,7 million), non-residential buildings contributing 73,2% (R2 473,9 million) and residential buildings contributing 59,2% (R5 398,7 million).

Table D – The largest municipal contributors to the value of buildings reported as completed for 2020 by province

Province/Municipality	Value of buildings completed at provincial/municipal level R million	Municipal % contribution to the value of buildings completed aggregated to provincial level
Western Cape	18 756,7	
City of Cape Town	12 619,3	67,3
George	799,7	4,3
Mossel Bay	693,9	3,7
Stellenbosch	683,4	3,6
Cape Agulhas	560,0	3,0
Gauteng	17 825,0	
City of Johannesburg	6 531,6	36,6
City of Tshwane	5 747,1	32,2
Ekurhuleni	4 329,6	24,3
Midvaal	473,0	2,7
Mogale City	248,4	1,4
KwaZulu-Natal	9 211,4	
eThekweni	6 092,9	66,1
KwaDukuza	1 368,4	14,9
uMngeni	291,1	3,2
City of uMhlatuze	118,0	1,3
Maphumulo	110,7	1,2
Eastern Cape	2 805,5	
Buffalo City	932,6	33,2
Nelson Mandela Bay	646,8	23,1
Kouga	242,3	8,6
Blue Crane Route	214,4	7,6
Lukhanji	108,5	3,9
Mpumalanga	2 101,8	
City of Mbombela	766,4	36,5
Emalahleni	217,1	10,3
Dr JS Moroka	209,9	10,0
Lekwa	164,2	7,8
Bushbuckridge	148,8	7,1

Table D – The largest municipal contributors to the value of buildings reported as completed for 2020 by province (concluded)

Province/Municipality	Value of buildings completed at provincial/municipal level R million	Municipal % contribution to the value of buildings completed aggregated to provincial level
Limpopo	1 722,5	
Polokwane	724,0	42,0
Greater Tzaneen	133,4	7,7
Elias Motsoaledi	129,9	7,5
Bela-Bela	119,1	6,9
Thulamela	100,0	5,8
North West	1 580,1	
Tlokwe City Council	630,9	39,9
Madibeng	429,6	27,2
Rustenburg	203,2	12,9
Mahikeng	97,6	6,2
City of Matlosana	56,4	3,6
Northern Cape	1 144,9	
Dawid Kruiper	671,7	58,7
Nama Khoi	89,6	7,8
Gamagara	85,5	7,5
Phokwane	79,7	7,0
!Kheis	72,6	6,3
Free State	886,5	
Mangaung	478,5	54,0
Nala	100,9	11,4
Tswelopele	55,2	6,2
Ngwathe	44,4	5,0
Metsimaholo	39,0	4,4

Risenga Maluleke
Statistician-General

LIST OF DETAILED TABLES

PART 1 – MUNICIPAL REPORTING OF BUILDINGS COMPLETED AGGREGATED TO PROVINCIAL LEVEL: MONTHLY SURVEY

Table 1	- Number, square metres and value of residential buildings, non-residential buildings and additions and alterations reported as completed to municipalities by province.....	1
Table 2	- Number, square metres and value of residential buildings reported as completed to municipalities: dwelling-houses, flats and townhouses and other residential buildings by province.....	3
Table 3	- Number, square metres and value of dwelling-houses reported as completed to municipalities by size of dwelling-house and province	5
Table 4	- Number, square metres and value of flats and townhouses reported as completed to municipalities by province.....	7
Table 5.1	- Number, square metres and value of non-residential buildings reported as completed to municipalities: office and banking space, shopping space and industrial and warehouse space by province	9
Table 5.2	- Number, square metres and value of non-residential buildings reported as completed to municipalities: schools, nursery schools, crèches, hospitals, churches, sport clubs, recreation clubs and all other space by province	11
Table 6	- Number, square metres and value of additions and alterations reported as completed to municipalities by province	13

PART 2 – MUNICIPAL REPORTING OF BUILDINGS COMPLETED AGGREGATED TO PROVINCIAL LEVEL: MONTHLY AND ANNUAL SURVEYS

Table 7	- Number, square metres and value of residential buildings, non-residential buildings and additions and alterations reported as completed to municipalities by province.....	15
Table 8	- Number, square metres and value of residential buildings reported as completed to municipalities: dwelling-houses, flats and townhouses and other residential buildings by province.....	17
Table 9	- Number, square metres and value of dwelling-houses reported as completed to municipalities by size of dwelling-house and province	19
Table 10	- Number, square metres and value of flats and townhouses reported as completed to municipalities by province.....	21
Table 11.1	- Number, square metres and value of non-residential buildings reported as completed to municipalities: office and banking space, shopping space and industrial and warehouse space by province	23
Table 11.2	- Number, square metres and value of non-residential buildings reported as completed to municipalities: schools, nursery schools, crèches, hospitals, churches, sport clubs, recreation clubs and all other space by province	25
Table 12	- Number, square metres and value of additions and alterations reported as completed to municipalities by province	27

LIST OF MUNICIPALITIES COVERED IN THE MONTHLY AND ANNUAL SURVEYS

Table 13	- Municipalities covered in the monthly and annual surveys by province: Western Cape	29
Table 14	- Municipalities covered in the monthly and annual surveys by province: Eastern Cape	31
Table 15	- Municipalities covered in the monthly and annual surveys by province: Northern Cape	34
Table 16	- Municipalities covered in the monthly and annual surveys by province: Free State	36
Table 17	- Municipalities covered in the monthly and annual surveys by province: KwaZulu-Natal	38
Table 18	- Municipalities covered in the monthly and annual surveys by province: North West	42
Table 19	- Municipalities covered in the monthly and annual surveys by province: Gauteng	44
Table 20	- Municipalities covered in the monthly and annual surveys by province: Mpumalanga	45
Table 21	- Municipalities covered in the monthly and annual surveys by province: Limpopo	47

Part 1
Municipal reporting of buildings completed
aggregated to provincial level:
monthly survey

Table 1 – Number, square metres and value of residential buildings, non-residential buildings and additions and alterations reported as completed to municipalities by province

Municipal reporting aggregated to provincial level by year		Residential buildings		Non-residential buildings			Additions and alterations			Buildings reported as completed to municipalities	
		Total square metres	Total value R'000	Number of buildings	Total square metres	Total value R'000	Number of plans	Total square metres	Total value R'000	Total square metres	Total value R'000
Western Cape	2018	1 725 832	12 084 905	277	610 601	4 382 445	7 523	645 127	4 732 200	2 981 560	21 199 550
	2019	1 640 860	11 888 519	276	708 591	5 267 303	7 048	611 222	4 852 803	2 960 673	22 008 625
	2020	1 113 169	8 013 370	161	404 038	2 959 416	5 976	616 278	5 410 782	2 133 485	16 383 568
Eastern Cape	2018	177 648	1 138 671	40	68 992	419 535	1 405	129 836	846 527	376 476	2 404 733
	2019	178 388	1 161 585	73	157 424	1 045 417	2 273	218 881	1 489 907	554 693	3 696 909
	2020	90 492	640 512	19	87 420	581 217	1 163	97 532	691 839	275 444	1 913 568
Northern Cape	2018	11 905	88 802	8	4 122	30 506	422	40 047	314 213	56 074	433 521
	2019	34 245	268 408	15	12 807	100 795	296	33 014	268 747	80 066	637 950
	2020	30 981	261 692	21	20 413	171 249	300	28 298	244 386	79 692	677 327
Free State	2018	92 961	633 935	21	35 330	263 706	343	32 206	234 659	160 497	1 132 300
	2019	45 725	281 774	15	15 309	97 228	497	36 438	230 690	97 472	609 692
	2020	41 675	314 297	12	25 748	204 935	126	12 533	99 120	79 956	618 352
KwaZulu-Natal	2018	412 680	4 299 551	109	299 042	2 480 034	2 279	225 634	2 454 440	937 356	9 234 025
	2019	528 711	5 721 703	124	608 700	4 577 357	1 793	219 144	2 547 449	1 356 555	12 846 509
	2020	352 098	3 727 797	71	480 266	3 098 939	977	114 543	1 319 329	946 907	8 146 065
North West	2018	268 660	1 498 043	42	45 673	233 554	846	72 269	429 924	386 602	2 161 521
	2019	214 967	1 255 473	41	51 094	280 766	575	60 883	371 049	326 944	1 907 288
	2020	153 470	1 001 986	22	36 246	228 759	233	27 827	204 936	217 543	1 435 681
Gauteng	2018	2 892 365	22 740 013	293	1 110 534	8 250 295	2 664	345 180	2 711 606	4 348 079	33 701 914
	2019	3 706 805	29 901 816	293	1 368 341	11 292 532	2 575	361 104	2 885 341	5 436 250	44 079 689
	2020	1 275 440	10 419 070	121	696 376	5 561 666	1 427	216 367	1 844 269	2 188 183	17 825 005
Mpumalanga	2018	236 347	1 335 109	37	50 356	266 171	561	60 363	542 614	347 066	2 143 894
	2019	221 661	1 342 326	31	66 143	431 691	622	51 338	561 184	339 142	2 335 201
	2020	96 796	664 728	21	47 833	358 728	298	24 938	184 984	169 567	1 208 440

Table 1 – Number, square metres and value of residential buildings, non-residential buildings and additions and alterations reported as completed to municipalities by province (concluded)

Municipal reporting aggregated to provincial level by year		Residential buildings		Non-residential buildings			Additions and alterations			Buildings reported as completed to municipalities	
		Total square metres	Total value R'000	Number of buildings	Total square metres	Total value R'000	Number of plans	Total square metres	Total value R'000	Total square metres	Total value R'000
Limpopo	2018	121 665	646 040	26	57 432	307 828	62	6 135	50 976	185 232	1 004 844
	2019	120 018	671 783	20	21 783	120 159	91	9 199	64 907	151 000	856 849
	2020	88 583	528 188	19	50 264	298 014	69	10 019	68 518	148 866	894 720
South Africa	2018	5 940 063	44 465 069	853	2 282 082	16 634 074	16 105	1 556 797	12 317 159	9 778 942	73 416 302
	2019	6 691 380	52 493 387	888	3 010 192	23 213 248	15 770	1 601 223	13 272 077	11 302 795	88 978 712
	2020	3 242 704	25 571 640	467	1 848 604	13 462 923	10 569	1 148 335	10 068 163	6 239 643	49 102 726

Table 2 – Number, square metres and value of residential buildings reported as completed to municipalities: dwelling-houses, flats and townhouses and other residential buildings by province

Municipal reporting aggregated to provincial level by year		Residential buildings										
		Dwelling-houses			Flats and townhouses			Other residential buildings ¹			Residential buildings reported as completed to municipalities	
		Number of dwelling-houses	Total square metres	Total value R'000	Number of units	Total square metres	Total value R'000	Number of buildings	Total square metres	Total value R'000	Total square metres	Total value R'000
Western Cape	2018	7 739	1 037 192	6 781 622	5 805	637 825	4 978 925	38	50 815	324 358	1 725 832	12 084 905
	2019	5 889	912 924	6 142 823	6 237	711 978	5 619 123	6	15 958	126 573	1 640 860	11 888 519
	2020	4 610	669 216	4 450 852	3 968	431 812	3 474 162	10	12 141	88 356	1 113 169	8 013 370
Eastern Cape	2018	1 121	150 212	957 621	231	27 436	181 050	0	0	0	177 648	1 138 671
	2019	976	148 737	966 164	293	28 649	188 362	3	1 002	7 059	178 388	1 161 585
	2020	476	80 437	570 726	103	10 055	69 786	0	0	0	90 492	640 512
Northern Cape	2018	69	11 684	87 065	2	221	1 737	0	0	0	11 905	88 802
	2019	138	30 561	239 082	33	3 209	25 763	1	475	3 563	34 245	268 408
	2020	127	29 224	246 832	18	1 257	10 560	1	500	4 300	30 981	261 692
Free State	2018	388	47 832	297 479	342	44 522	333 294	6	607	3 162	92 961	633 935
	2019	236	41 168	251 709	36	2 108	12 755	11	2 449	17 310	45 725	281 774
	2020	216	31 362	231 051	36	10 313	83 246	0	0	0	41 675	314 297
KwaZulu-Natal	2018	1 041	246 372	2 572 485	812	146 679	1 503 367	6	19 629	223 699	412 680	4 299 551
	2019	868	235 500	2 514 738	1 931	281 374	3 079 574	2	11 837	127 391	528 711	5 721 703
	2020	691	162 448	1 717 932	1 489	173 764	1 832 094	6	15 886	177 771	352 098	3 727 797
North West	2018	1 125	165 823	905 033	1 115	100 975	583 822	2	1 862	9 188	268 660	1 498 043
	2019	845	158 592	918 947	655	49 678	298 125	4	6 697	38 401	214 967	1 255 473
	2020	578	112 112	721 094	412	38 780	264 269	3	2 578	16 623	153 470	1 001 986
Gauteng	2018	8 975	1 313 329	9 922 956	9 231	1 576 194	12 799 717	3	2 842	17 340	2 892 365	22 740 013
	2019	9 303	1 308 033	10 102 642	15 935	2 367 303	19 537 989	5	31 469	261 185	3 706 805	29 901 816
	2020	6 477	753 664	5 757 041	3 896	516 550	4 610 428	3	5 226	51 601	1 275 440	10 419 070
Mpumalanga	2018	1 421	212 034	1 197 091	180	18 665	97 302	3	5 648	40 716	236 347	1 335 109
	2019	1 125	193 249	1 192 503	219	28 412	149 823	0	0	0	221 661	1 342 326
	2020	517	89 956	619 497	47	6 840	45 231	0	0	0	96 796	664 728

¹ Other residential buildings include institutions for the disabled, boarding houses, hostels and tourism accommodation e.g. hotels, motels, guest-houses, holiday chalets, bed-and-breakfast accommodation and casinos.

Table 2 – Number, square metres and value of residential buildings reported as completed to municipalities: dwelling-houses, flats and townhouses and other residential buildings by province (concluded)

Municipal reporting aggregated to provincial level by year		Residential buildings										
		Dwelling-houses			Flats and townhouses			Other residential buildings ¹			Residential buildings reported as completed to municipalities	
		Number of dwelling-houses	Total square metres	Total value R'000	Number of units	Total square metres	Total value R'000	Number of buildings	Total square metres	Total value R'000	Total square metres	Total value R'000
Limpopo	2018	498	101 208	534 150	107	10 211	55 515	8	10 246	56 375	121 665	646 040
	2019	452	100 885	563 918	174	18 615	104 814	3	518	3 051	120 018	671 783
	2020	301	70 940	420 606	216	16 883	103 003	1	760	4 579	88 583	528 188
South Africa	2018	22 377	3 285 686	23 255 502	17 825	2 562 728	20 534 729	66	91 649	674 838	5 940 063	44 465 069
	2019	19 832	3 129 649	22 892 526	25 513	3 491 326	29 016 328	35	70 405	584 533	6 691 380	52 493 387
	2020	13 993	1 999 359	14 735 631	10 185	1 206 254	10 492 779	24	37 091	343 230	3 242 704	25 571 640

¹ Other residential buildings include institutions for the disabled, boarding houses, hostels and tourism accommodation e.g. hotels, motels, guest-houses, holiday chalets, bed-and-breakfast accommodation and casinos.

Table 3 – Number, square metres and value of dwelling-houses reported as completed to municipalities by size of dwelling-house by province

Municipal reporting aggregated to provincial level by year		Size of dwelling-house						Dwelling-houses reported as completed to municipalities		
		Smaller than 80 square metres			Equal to or larger than 80 square metres					
		Number of dwelling-houses	Total square metres	Total value R'000	Number of dwelling-houses	Total square metres	Total value R'000	Number of dwelling-houses	Total square metres	Total value R'000
Western Cape	2018	4 095	188 678	1 100 876	3 644	848 514	5 680 746	7 739	1 037 192	6 781 622
	2019	2 664	123 389	731 516	3 225	789 535	5 411 307	5 889	912 924	6 142 823
	2020	2 276	103 323	578 697	2 334	565 893	3 872 155	4 610	669 216	4 450 852
Eastern Cape	2018	526	26 537	135 742	595	123 675	821 879	1 121	150 212	957 621
	2019	351	16 697	85 839	625	132 040	880 325	976	148 737	966 164
	2020	106	6 211	39 290	370	74 226	531 436	476	80 437	570 726
Northern Cape	2018	14	896	6 971	55	10 788	80 094	69	11 684	87 065
	2019	40	2 464	19 579	98	28 097	219 503	138	30 561	239 082
	2020	5	308	2 650	122	28 916	244 182	127	29 224	246 832
Free State	2018	210	11 761	66 642	178	36 071	230 837	388	47 832	297 479
	2019	51	3 130	22 735	185	38 038	228 974	236	41 168	251 709
	2020	109	6 595	53 338	107	24 767	177 713	216	31 362	231 051
KwaZulu-Natal	2018	206	11 969	122 715	835	234 403	2 449 770	1 041	246 372	2 572 485
	2019	143	8 216	70 930	725	227 284	2 443 808	868	235 500	2 514 738
	2020	131	7 839	78 226	560	154 609	1 639 706	691	162 448	1 717 932
North West	2018	305	17 892	88 346	820	147 931	816 687	1 125	165 823	905 033
	2019	50	3 212	17 756	795	155 380	901 191	845	158 592	918 947
	2020	104	6 175	35 564	474	105 937	685 530	578	112 112	721 094
Gauteng	2018	5 440	287 193	1 675 493	3 535	1 026 136	8 247 463	8 975	1 313 329	9 922 956
	2019	5 944	313 390	1 786 775	3 359	994 643	8 315 867	9 303	1 308 033	10 102 642
	2020	4 529	237 891	1 440 455	1 948	515 773	4 316 586	6 477	753 664	5 757 041
Mpumalanga	2018	709	37 296	177 776	712	174 738	1 019 315	1 421	212 034	1 197 091
	2019	487	28 620	149 334	638	164 629	1 043 169	1 125	193 249	1 192 503
	2020	178	9 633	50 811	339	80 323	568 686	517	89 956	619 497

Table 3 - Number, square metres and value of dwelling-houses reported as completed to municipalities by size of dwelling-house by province (concluded)

Municipal reporting aggregated to provincial level by year		Size of dwelling-house						Dwelling-houses reported as completed to municipalities		
		Smaller than 80 square metres			Equal to or larger than 80 square metres					
		Number of dwelling-houses	Total square metres	Total value R'000	Number of dwelling-houses	Total square metres	Total value R'000	Number of dwelling-houses	Total square metres	Total value R'000
Limpopo	2018	157	9 708	52 456	341	91 500	481 694	498	101 208	534 150
	2019	106	6 670	35 683	346	94 215	528 235	452	100 885	563 918
	2020	92	5 309	31 783	209	65 631	388 823	301	70 940	420 606
South Africa	2018	11 662	591 930	3 427 017	10 715	2 693 756	19 828 485	22 377	3 285 686	23 255 502
	2019	9 836	505 788	2 920 147	9 996	2 623 861	19 972 379	19 832	3 129 649	22 892 526
	2020	7 530	383 284	2 310 814	6 463	1 616 075	12 424 817	13 993	1 999 359	14 735 631

Table 4 – Number, square metres and value of flats and townhouses reported as completed to municipalities by province

Municipal reporting aggregated to provincial level by year		Flats			Townhouses			Flats and townhouses reported as completed to municipalities		
		Number of units	Total square metres	Total value R'000	Number of units	Total square metres	Total value R'000	Number of units	Total square metres	Total value R'000
Western Cape	2018	4 734	433 635	3 429 338	1 071	204 190	1 549 587	5 805	637 825	4 978 925
	2019	5 018	480 815	3 867 234	1 219	231 163	1 751 889	6 237	711 978	5 619 123
	2020	3 338	302 835	2 471 077	630	128 977	1 003 085	3 968	431 812	3 474 162
Eastern Cape	2018	98	5 817	39 632	133	21 619	141 418	231	27 436	181 050
	2019	128	7 838	50 988	165	20 811	137 374	293	28 649	188 362
	2020	16	970	7 013	87	9 085	62 773	103	10 055	69 786
Northern Cape	2018	0	0	0	2	221	1 737	2	221	1 737
	2019	0	0	0	33	3 209	25 763	33	3 209	25 763
	2020	0	0	0	18	1 257	10 560	18	1 257	10 560
Free State	2018	85	3 987	29 528	257	40 535	303 766	342	44 522	333 294
	2019	34	1 599	9 385	2	509	3 370	36	2 108	12 755
	2020	0	0	0	36	10 313	83 246	36	10 313	83 246
KwaZulu-Natal	2018	464	70 735	847 680	348	75 944	655 687	812	146 679	1 503 367
	2019	1 517	196 125	2 331 855	414	85 249	747 719	1 931	281 374	3 079 574
	2020	957	103 205	1 173 827	532	70 559	658 267	1 489	173 764	1 832 094
North West	2018	755	46 188	275 911	360	54 787	307 911	1 115	100 975	583 822
	2019	569	38 376	236 713	86	11 302	61 412	655	49 678	298 125
	2020	315	27 758	188 028	97	11 022	76 241	412	38 780	264 269
Gauteng	2018	2 641	177 428	1 997 033	6 590	1 398 766	10 802 684	9 231	1 576 194	12 799 717
	2019	3 854	228 632	2 345 155	12 081	2 138 671	17 192 834	15 935	2 367 303	19 537 989
	2020	590	40 715	461 740	3 306	475 835	4 148 688	3 896	516 550	4 610 428
Mpumalanga	2018	61	3 345	19 807	119	15 320	77 495	180	18 665	97 302
	2019	0	0	0	219	28 412	149 823	219	28 412	149 823
	2020	20	3 315	25 993	27	3 525	19 238	47	6 840	45 231

Table 4 – Number, square metres and value of flats and townhouses reported as completed to municipalities by province (concluded)

Municipal reporting aggregated to provincial level by year		Flats			Townhouses			Flats and townhouses reported as completed to municipalities		
		Number of units	Total square metres	Total value R'000	Number of units	Total square metres	Total value R'000	Number of units	Total square metres	Total value R'000
Limpopo	2018	30	3 506	19 828	77	6 705	35 687	107	10 211	55 515
	2019	18	1 226	7 036	156	17 389	97 778	174	18 615	104 814
	2020	66	3 662	22 949	150	13 221	80 054	216	16 883	103 003
South Africa	2018	8 868	744 641	6 658 757	8 957	1 818 087	13 875 972	17 825	2 562 728	20 534 729
	2019	11 138	954 611	8 848 366	14 375	2 536 715	20 167 962	25 513	3 491 326	29 016 328
	2020	5 302	482 460	4 350 627	4 883	723 794	6 142 152	10 185	1 206 254	10 492 779

Table 5.1 – Number, square metres and value of non-residential buildings reported as completed to municipalities: office and banking space, shopping space and industrial and warehouse space by province

Municipal reporting aggregated to provincial level by year		Non-residential buildings								
		Office and banking space			Shopping space			Industrial and warehouse space		
		Number of buildings	Total square metres	Total value R'000	Number of buildings	Total square metres	Total value R'000	Number of buildings	Total square metres	Total value R'000
Western Cape	2018	32	161 951	1 326 792	27	93 318	721 490	154	268 786	1 734 078
	2019	17	73 610	598 695	24	133 733	1 138 349	165	342 000	2 346 058
	2020	18	87 562	708 327	19	90 562	710 509	71	151 424	1 017 617
Eastern Cape	2018	3	1 840	11 822	4	2 124	12 023	19	53 642	324 650
	2019	8	13 191	84 518	10	9 307	61 423	38	103 744	699 035
	2020	2	1 070	7 047	2	2 369	17 128	9	82 129	547 435
Northern Cape	2018	3	1 760	13 051	0	0	0	5	2 362	17 455
	2019	4	1 098	8 743	0	0	0	8	10 603	83 425
	2020	1	400	3 440	1	4 775	39 155	14	13 768	116 214
Free State	2018	6	7 786	57 772	3	2 145	12 664	8	14 793	113 216
	2019	4	2 239	11 872	1	234	1 565	8	11 980	77 048
	2020	2	6 713	54 187	2	3 620	28 517	8	15 415	122 231
KwaZulu-Natal	2018	11	76 881	839 712	15	56 721	563 319	67	141 092	868 172
	2019	10	118 241	1 290 650	22	65 039	677 726	70	375 767	2 266 139
	2020	8	29 615	302 696	16	17 559	147 588	37	418 962	2 518 306
North West	2018	5	2 379	13 155	9	14 450	74 652	15	19 459	95 566
	2019	5	4 900	24 401	15	19 240	115 658	9	14 617	74 123
	2020	5	5 785	35 774	10	21 516	140 758	5	6 751	39 972
Gauteng	2018	62	349 086	3 424 024	83	120 036	1 106 812	119	578 113	3 232 919
	2019	47	363 182	3 846 968	109	346 419	3 391 428	96	520 196	3 022 906
	2020	17	254 755	2 527 988	26	78 085	807 222	62	340 737	2 046 428
Mpumalanga	2018	4	2 336	11 549	12	16 684	81 543	16	18 207	107 171
	2019	8	16 919	126 493	9	28 238	185 481	8	14 229	85 066
	2020	1	863	4 573	4	20 575	161 328	10	16 809	120 082

Table 5.1 – Number, square metres and value of non-residential buildings reported as completed to municipalities: office and banking space, shopping space and industrial and warehouse space by province (concluded)

Municipal reporting aggregated to provincial level by year		Non-residential buildings								
		Office and banking space			Shopping space			Industrial and warehouse space		
		Number of buildings	Total square metres	Total value R'000	Number of buildings	Total square metres	Total value R'000	Number of buildings	Total square metres	Total value R'000
Limpopo	2018	7	12 033	64 856	7	28 862	156 007	10	15 303	81 046
	2019	3	1 997	11 034	7	8 432	47 970	7	9 504	52 102
	2020	3	8 190	49 282	2	964	5 558	9	30 673	185 039
South Africa	2018	133	616 052	5 762 733	160	334 340	2 728 510	413	1 111 757	6 574 273
	2019	106	595 377	6 003 374	197	610 642	5 619 600	409	1 402 640	8 705 902
	2020	57	394 953	3 693 314	82	240 025	2 057 763	225	1 076 668	6 713 324

Table 5.2 – Number, square metres and value of non-residential buildings reported as completed to municipalities: schools, nursery schools, crèches, hospitals, churches, sports club, recreation clubs and all other space by province

Municipal reporting aggregated to provincial level by year		Non-residential buildings											
		Schools, nursery schools, crèches and hospitals			Churches, sport and recreation clubs			All other non-residential space			Non-residential buildings reported as completed to municipalities ¹		
		Number of buildings	Total square metres	Total value R'000	Number of buildings	Total square metres	Total value R'000	Number of buildings	Total square metres	Total value R'000	Number of buildings	Total square metres	Total value R'000
Western Cape	2018	20	50 219	349 032	18	12 797	87 098	26	23 530	163 955	277	610 601	4 382 445
	2019	26	85 401	671 532	11	7 373	47 485	33	66 474	465 184	276	708 591	5 267 303
	2020	14	40 594	290 523	10	9 065	60 748	29	24 831	171 692	161	404 038	2 959 416
Eastern Cape	2018	3	8 890	56 064	4	1 840	11 050	7	656	3 926	40	68 992	419 535
	2019	2	25 810	163 758	4	3 430	23 887	11	1 942	12 796	73	157 424	1 045 417
	2020	2	1 263	6 947	1	375	1 533	3	214	1 127	19	87 420	581 217
Northern Cape	2018	0	0	0	0	0	0	0	0	0	8	4 122	30 506
	2019	1	760	6 232	2	346	2 395	0	0	0	15	12 807	100 795
	2020	1	189	1 550	4	1 281	10 890	0	0	0	21	20 413	171 249
Free State	2018	3	10 280	78 054	1	326	2 000	0	0	0	21	35 330	263 706
	2019	1	378	3 051	1	478	3 692	0	0	0	15	15 309	97 228
	2020	0	0	0	0	0	0	0	0	0	12	25 748	204 935
KwaZulu-Natal	2018	5	14 910	119 001	10	9 089	87 003	1	349	2 827	109	299 042	2 480 034
	2019	3	21 207	109 383	10	11 532	107 698	9	16 914	125 761	124	608 700	4 577 357
	2020	4	8 072	89 450	4	5 805	38 015	2	253	2 884	71	480 266	3 098 939
North West	2018	4	3 863	19 314	8	5 378	29 953	1	144	914	42	45 673	233 554
	2019	5	8 191	43 682	6	3 946	21 909	1	200	993	41	51 094	280 766
	2020	2	2 194	12 255	0	0	0	0	0	0	22	36 246	228 759
Gauteng	2018	14	51 972	410 768	7	9 577	60 246	8	1 750	15 526	293	1 110 534	8 250 295
	2019	26	101 996	748 339	10	26 100	203 219	5	10 448	79 672	293	1 368 341	11 292 532
	2020	9	19 476	154 128	3	2 045	14 208	4	1 278	11 692	121	696 376	5 561 666
Mpumalanga	2018	2	6 124	31 164	1	214	1 020	2	6 791	33 724	37	50 356	266 171
	2019	2	773	4 009	1	2 771	14 686	3	3 213	15 956	31	66 143	431 691
	2020	3	9 403	71 753	0	0	0	3	183	992	21	47 833	358 728

¹ Non-residential buildings include office and banking space, shopping space, industrial and warehouse space, schools, nursery schools, crèches, hospitals, churches, sport clubs, recreation clubs and all other space (Tables 5.1 and 5.2).

Table 5.2 – Number, square metres and value of non-residential buildings reported as completed to municipalities: schools, nursery schools, crèches, hospitals, churches, sports club, recreation clubs and all other space by province (concluded)

Municipal reporting aggregated to provincial level by year		Non-residential buildings											
		Schools, nursery schools, crèches and hospitals			Churches, sport and recreation clubs			All other non-residential space			Non-residential buildings reported as completed to municipalities ¹		
		Number of buildings	Total square metres	Total value R'000	Number of buildings	Total square metres	Total value R'000	Number of buildings	Total square metres	Total value R'000	Number of buildings	Total square metres	Total value R'000
Limpopo	2018	1	645	3 412	1	589	2 507	0	0	0	26	57 432	307 828
	2019	1	1 072	4 761	0	0	0	2	778	4 292	20	21 783	120 159
	2020	2	5 535	29 810	1	2 976	17 160	2	1 926	11 165	19	50 264	298 014
South Africa	2018	52	146 903	1 066 809	50	39 810	280 877	45	33 220	220 872	853	2 282 082	16 634 074
	2019	67	245 588	1 754 747	45	55 976	424 971	64	99 969	704 654	888	3 010 192	23 213 248
	2020	37	86 726	656 416	23	21 547	142 554	43	28 685	199 552	467	1 848 604	13 462 923

¹ Non-residential buildings include office and banking space, shopping space, industrial and warehouse space, schools, nursery schools, crèches, hospitals, churches, sport clubs, recreation clubs and all other space (Tables 5.1 and 5.2).

Table 6 – Number, square metres and value of additions and alterations reported as completed to municipalities by province

Municipal reporting aggregated to provincial level by year		Additions and alterations to residential buildings			Additions and alterations to non-residential buildings			Internal alterations	Additions and alterations reported as completed to municipalities		
		Number of plans	Total square metres	Total value R'000	Number of plans	Total square metres	Total value R'000	Total value R'000	Number of plans	Total square metres	Total value R'000
Western Cape	2018	7 057	465 956	2 982 526	466	179 171	1 270 316	479 358	7 523	645 127	4 732 200
	2019	6 558	437 852	2 977 263	490	173 370	1 249 963	625 577	7 048	611 222	4 852 803
	2020	5 488	405 180	2 880 207	488	211 098	1 490 391	1 040 184	5 976	616 278	5 410 782
Eastern Cape	2018	1 325	93 414	588 121	80	36 422	233 815	24 591	1 405	129 836	846 527
	2019	2 126	155 057	1 019 350	147	63 824	421 352	49 205	2 273	218 881	1 489 907
	2020	1 117	74 775	523 552	46	22 757	156 128	12 159	1 163	97 532	691 839
Northern Cape	2018	402	30 010	225 440	20	10 037	72 496	16 277	422	40 047	314 213
	2019	286	26 626	210 824	10	6 388	50 141	7 782	296	33 014	268 747
	2020	289	21 188	180 879	11	7 110	61 167	2 340	300	28 298	244 386
Free State	2018	326	23 226	140 188	17	8 980	65 495	28 976	343	32 206	234 659
	2019	486	32 931	188 292	11	3 507	22 031	20 367	497	36 438	230 690
	2020	118	8 975	57 331	8	3 558	28 376	13 413	126	12 533	99 120
KwaZulu-Natal	2018	2 162	177 493	1 911 525	117	48 141	426 376	116 539	2 279	225 634	2 454 440
	2019	1 681	132 283	1 474 228	112	86 861	850 348	222 873	1 793	219 144	2 547 449
	2020	907	81 859	899 969	70	32 684	349 535	69 825	977	114 543	1 319 329
North West	2018	823	62 008	362 577	23	10 261	64 771	2 576	846	72 269	429 924
	2019	526	40 001	234 254	49	20 882	131 164	5 631	575	60 883	371 049
	2020	214	22 170	146 755	19	5 657	38 821	19 360	233	27 827	204 936
Gauteng	2018	2 521	244 941	1 891 204	143	100 239	753 790	66 612	2 664	345 180	2 711 606
	2019	2 446	251 915	2 042 789	129	109 189	790 279	52 273	2 575	361 104	2 885 341
	2020	1 344	146 852	1 209 072	83	69 515	600 914	34 283	1 427	216 367	1 844 269
Mpumalanga	2018	545	51 070	289 479	16	9 293	46 129	207 006	561	60 363	542 614
	2019	603	45 965	269 591	19	5 373	29 696	261 897	622	51 338	561 184
	2020	284	19 914	118 468	14	5 024	36 093	30 423	298	24 938	184 984

Table 6 – Number, square metres and value of additions and alterations reported as completed to municipalities by province (concluded)

Municipal reporting aggregated to provincial level by year		Additions and alterations to residential buildings			Additions and alterations to non-residential buildings			Internal alterations	Additions and alterations reported as completed to municipalities		
		Number of plans	Total square metres	Total value R'000	Number of plans	Total square metres	Total value R'000	Total value R'000	Number of plans	Total square metres	Total value R'000
Limpopo	2018	58	5 454	28 321	4	681	3 719	18 936	62	6 135	50 976
	2019	86	7 788	44 055	5	1 411	7 920	12 932	91	9 199	64 907
	2020	62	6 276	36 203	7	3 743	22 315	10 000	69	10 019	68 518
South Africa	2018	15 219	1 153 572	8 419 381	886	403 225	2 936 907	960 871	16 105	1 556 797	12 317 159
	2019	14 798	1 130 418	8 460 646	972	470 805	3 552 894	1 258 537	15 770	1 601 223	13 272 077
	2020	9 823	787 189	6 052 436	746	361 146	2 783 740	1 231 987	10 569	1 148 335	10 068 163

Part 2

**Municipal reporting of buildings completed
aggregated to provincial level:
monthly and annual surveys**

Table 7 – Number, square metres and value of residential buildings, non-residential buildings and additions and alterations reported as completed to municipalities by province

Municipal reporting aggregated to provincial level by year		Residential buildings		Non-residential buildings			Additions and alterations			Buildings reported as completed to municipalities	
		Total square metres	Total value R'000	Number of buildings	Total square metres	Total value R'000	Number of plans	Total square metres	Total value R'000	Total square metres	Total value R'000
Western Cape	2018	1 971 039	13 656 474	361	679 269	4 823 878	9 031	748 557	5 445 930	3 398 865	23 926 282
	2019	1 895 609	13 688 516	376	794 433	5 826 494	8 186	690 490	5 391 355	3 380 532	24 906 365
	2020	1 256 812	9 120 419	226	464 386	3 378 550	7 064	716 145	6 257 693	2 437 343	18 756 662
Eastern Cape	2018	416 010	2 118 860	106	127 079	748 708	2 096	176 888	1 117 002	719 977	3 984 570
	2019	356 282	1 928 837	96	170 654	1 127 897	2 680	241 981	1 630 438	768 917	4 687 172
	2020	191 813	1 151 574	75	120 703	771 025	1 496	125 562	882 904	438 078	2 805 503
Northern Cape	2018	65 197	345 618	32	18 340	99 439	681	59 137	416 481	142 674	861 538
	2019	72 706	484 006	28	17 113	130 629	596	56 388	397 920	146 207	1 012 555
	2020	68 466	480 035	48	37 304	282 062	801	51 953	382 781	157 723	1 144 878
Free State	2018	195 347	994 976	27	37 966	276 811	460	39 207	268 038	272 520	1 539 825
	2019	112 538	551 879	18	16 467	103 925	674	46 266	280 879	175 271	936 683
	2020	86 885	540 375	14	27 313	213 295	213	19 103	132 864	133 301	886 534
KwaZulu-Natal	2018	755 337	5 311 835	169	347 771	2 751 589	2 474	240 239	2 535 563	1 343 347	10 598 987
	2019	826 891	6 730 434	165	631 405	4 694 723	2 141	236 281	2 642 278	1 694 577	14 067 435
	2020	632 764	4 646 431	99	492 717	3 174 595	1 181	126 651	1 390 329	1 252 132	9 211 355
North West	2018	342 908	1 748 712	47	57 911	300 786	932	79 002	472 044	479 821	2 521 542
	2019	299 782	1 546 916	50	54 237	298 713	650	67 663	404 515	421 682	2 250 144
	2020	174 722	1 092 409	25	39 869	243 302	335	36 563	244 400	251 154	1 580 111
Gauteng	2018	2 892 365	22 740 013	293	1 110 534	8 250 295	2 664	345 180	2 711 606	4 348 079	33 701 914
	2019	3 706 805	29 901 816	293	1 368 341	11 292 532	2 575	361 104	2 885 341	5 436 250	44 079 689
	2020	1 275 440	10 419 070	121	696 376	5 561 666	1 427	216 367	1 844 269	2 188 183	17 825 005
Mpumalanga	2018	372 411	1 895 058	68	64 022	349 715	785	77 796	642 462	514 229	2 887 235
	2019	366 406	1 964 987	61	91 233	572 093	883	70 611	677 025	528 250	3 214 105
	2020	174 685	988 232	54	88 327	713 211	497	44 867	400 370	307 879	2 101 813

Table 7 – Number, square metres and value of residential buildings, non-residential buildings and additions and alterations reported as completed to municipalities by province (concluded)

Municipal reporting aggregated to provincial level by year		Residential buildings		Non-residential buildings			Additions and alterations			Buildings reported as completed to municipalities	
		Total square metres	Total value R'000	Number of buildings	Total square metres	Total value R'000	Number of plans	Total square metres	Total value R'000	Total square metres	Total value R'000
Limpopo	2018	451 919	1 761 912	76	110 541	591 841	341	50 589	357 762	613 049	2 711 515
	2019	414 283	1 657 168	54	41 465	223 074	327	33 198	206 439	488 946	2 086 681
	2020	263 013	1 160 327	48	65 258	381 772	227	27 076	180 449	355 347	1 722 548
South Africa	2018	7 462 533	50 573 458	1 179	2 553 433	18 193 062	19 464	1 816 595	13 966 888	11 832 561	82 733 408
	2019	8 051 302	58 454 559	1 141	3 185 348	24 270 080	18 712	1 803 982	14 516 190	13 040 632	97 240 829
	2020	4 124 600	29 598 872	710	2 032 253	14 719 478	13 241	1 364 287	11 716 059	7 521 140	56 034 409

Table 8 – Number, square metres and value of residential buildings reported as completed to municipalities: dwelling-houses, flats and townhouses and other residential buildings by province

Municipal reporting aggregated to provincial level by year		Residential buildings										
		Dwelling-houses			Flats and townhouses			Other residential buildings ¹			Residential buildings reported as completed to municipalities	
		Number of dwelling-houses	Total square metres	Total value R'000	Number of units	Total square metres	Total value R'000	Number of buildings	Total square metres	Total value R'000	Total square metres	Total value R'000
Western Cape	2018	9 625	1 249 394	8 128 324	6 061	663 530	5 143 572	50	58 115	384 578	1 971 039	13 656 474
	2019	7 908	1 137 069	7 738 905	6 474	740 830	5 810 201	10	17 710	139 410	1 895 609	13 688 516
	2020	5 412	806 117	5 505 085	4 030	437 768	3 521 133	12	12 927	94 201	1 256 812	9 120 419
Eastern Cape	2018	5 514	367 265	1 801 614	352	41 701	270 486	4	7 044	46 760	416 010	2 118 860
	2019	4 369	307 192	1 600 146	397	40 944	271 430	9	8 146	57 261	356 282	1 928 837
	2020	1 501	159 724	955 256	286	29 487	183 121	6	2 602	13 197	191 813	1 151 574
Northern Cape	2018	488	62 006	327 971	2	221	1 737	6	2 970	15 910	65 197	345 618
	2019	385	68 877	453 933	33	3 209	25 763	2	620	4 310	72 706	484 006
	2020	352	65 699	458 671	22	1 761	13 806	2	1 006	7 558	68 466	480 035
Free State	2018	2 304	147 876	646 078	348	44 882	335 202	8	2 589	13 696	195 347	994 976
	2019	1 170	107 433	518 800	41	2 656	15 769	11	2 449	17 310	112 538	551 879
	2020	663	76 572	457 129	36	10 313	83 246	0	0	0	86 885	540 375
KwaZulu-Natal	2018	8 141	580 422	3 533 815	845	150 212	1 521 706	16	24 703	256 314	755 337	5 311 835
	2019	6 876	522 625	3 460 628	1 971	286 389	3 108 176	11	17 877	161 630	826 891	6 730 434
	2020	6 718	434 529	2 582 866	1 560	180 023	1 871 153	8	18 212	192 412	632 764	4 646 431
North West	2018	2 398	229 148	1 093 875	1 205	110 972	641 019	3	2 788	13 818	342 908	1 748 712
	2019	2 347	239 348	1 184 987	670	51 895	310 363	5	8 539	51 566	299 782	1 546 916
	2020	871	131 027	797 420	421	40 767	275 741	4	2 928	19 248	174 722	1 092 409
Gauteng	2018	8 975	1 313 329	9 922 956	9 231	1 576 194	12 799 717	3	2 842	17 340	2 892 365	22 740 013
	2019	9 303	1 308 033	10 102 642	15 935	2 367 303	19 537 989	5	31 469	261 185	3 706 805	29 901 816
	2020	6 477	753 664	5 757 041	3 896	516 550	4 610 428	3	5 226	51 601	1 275 440	10 419 070
Mpumalanga	2018	3 361	325 239	1 619 280	436	38 242	215 182	5	8 930	60 596	372 411	1 895 058
	2019	3 210	321 481	1 721 230	481	44 925	243 757	0	0	0	366 406	1 964 987
	2020	1 722	158 734	892 075	166	15 951	96 157	0	0	0	174 685	988 232

¹ Other residential buildings include institutions for the disabled, boarding houses, hostels and tourism accommodation e.g. hotels, motels, guest-houses, holiday chalets, bed-and-breakfast accommodation and casinos.

Table 8 – Number, square metres and value of residential buildings reported as completed to municipalities: dwelling-houses, flats and townhouses and other residential buildings by province (concluded)

Municipal reporting aggregated to provincial level by year		Residential buildings										
		Dwelling-houses			Flats and townhouses			Other residential buildings ¹			Residential buildings reported as completed to municipalities	
		Number of dwelling-houses	Total square metres	Total value R'000	Number of units	Total square metres	Total value R'000	Number of buildings	Total square metres	Total value R'000	Total square metres	Total value R'000
Limpopo	2018	5 427	398 811	1 478 368	134	16 095	93 563	45	37 013	189 981	451 919	1 761 912
	2019	5 180	361 907	1 370 296	380	43 068	239 547	21	9 308	47 325	414 283	1 657 168
	2020	3 015	225 903	958 670	282	27 232	154 449	35	9 878	47 208	263 013	1 160 327
South Africa	2018	46 233	4 673 490	28 552 281	18 614	2 642 049	21 022 184	140	146 994	998 993	7 462 533	50 573 458
	2019	40 748	4 373 965	28 151 567	26 382	3 581 219	29 562 995	74	96 118	739 997	8 051 302	58 454 559
	2020	26 731	2 811 969	18 364 213	10 699	1 259 852	10 809 234	70	52 779	425 425	4 124 600	29 598 872

¹ Other residential buildings include institutions for the disabled, boarding houses, hostels and tourism accommodation e.g. hotels, motels, guest-houses, holiday chalets, bed-and-breakfast accommodation and casinos.

Table 9 – Number, square metres and value of dwelling-houses reported as completed to municipalities by size of dwelling-house by province

Municipal reporting aggregated to provincial level by year		Size of dwelling-house						Dwelling-houses reported as completed to municipalities		
		Smaller than 80 square metres			Equal to or larger than 80 square metres					
		Number of dwelling-houses	Total square metres	Total value R'000	Number of dwelling-houses	Total square metres	Total value R'000	Number of dwelling-houses	Total square metres	Total value R'000
Western Cape	2018	5 347	242 044	1 281 160	4 278	1 007 350	6 847 164	9 625	1 249 394	8 128 324
	2019	3 898	169 207	932 955	4 010	967 862	6 805 950	7 908	1 137 069	7 738 905
	2020	2 568	117 503	650 330	2 844	688 614	4 854 755	5 412	806 117	5 505 085
Eastern Cape	2018	4 680	195 011	668 080	834	172 254	1 133 534	5 514	367 265	1 801 614
	2019	3 603	142 479	518 263	766	164 713	1 081 883	4 369	307 192	1 600 146
	2020	822	35 551	134 946	679	124 173	820 310	1 501	159 724	955 256
Northern Cape	2018	216	10 894	38 004	272	51 112	289 967	488	62 006	327 971
	2019	111	6 048	35 951	274	62 829	417 982	385	68 877	453 933
	2020	38	2 117	12 396	314	63 582	446 275	352	65 699	458 671
Free State	2018	1 972	88 856	298 402	332	59 020	347 676	2 304	147 876	646 078
	2019	812	39 877	139 071	358	67 556	379 729	1 170	107 433	518 800
	2020	405	20 961	103 463	258	55 611	353 666	663	76 572	457 129
KwaZulu-Natal	2018	7 145	308 443	878 285	996	271 979	2 655 530	8 141	580 422	3 533 815
	2019	5 971	242 300	719 204	905	280 325	2 741 424	6 876	522 625	3 460 628
	2020	6 000	245 688	737 673	718	188 841	1 845 193	6 718	434 529	2 582 866
North West	2018	1 555	75 509	247 210	843	153 639	846 665	2 398	229 148	1 093 875
	2019	1 444	64 337	170 286	903	175 011	1 014 701	2 347	239 348	1 184 987
	2020	363	17 489	69 262	508	113 538	728 158	871	131 027	797 420
Gauteng	2018	5 440	287 193	1 675 493	3 535	1 026 136	8 247 463	8 975	1 313 329	9 922 956
	2019	5 944	313 390	1 786 775	3 359	994 643	8 315 867	9 303	1 308 033	10 102 642
	2020	4 529	237 891	1 440 455	1 948	515 773	4 316 586	6 477	753 664	5 757 041
Mpumalanga	2018	2 553	125 707	453 441	808	199 532	1 165 839	3 361	325 239	1 619 280
	2019	2 431	119 313	448 240	779	202 168	1 272 990	3 210	321 481	1 721 230
	2020	1 277	56 467	191 501	445	102 267	700 574	1 722	158 734	892 075

Table 9 – Number, square metres and value of dwelling-houses reported as completed to municipalities by size of dwelling-house by province (concluded)

Municipal reporting aggregated to provincial level by year		Size of dwelling-house						Dwelling-houses reported as completed to municipalities		
		Smaller than 80 square metres			Equal to or larger than 80 square metres					
		Number of dwelling-houses	Total square metres	Total value R'000	Number of dwelling-houses	Total square metres	Total value R'000	Number of dwelling-houses	Total square metres	Total value R'000
Limpopo	2018	4 736	222 953	583 272	691	175 858	895 096	5 427	398 811	1 478 368
	2019	4 559	207 571	531 382	621	154 336	838 914	5 180	361 907	1 370 296
	2020	2 676	125 125	368 808	339	100 778	589 862	3 015	225 903	958 670
South Africa	2018	33 644	1 556 610	6 123 347	12 589	3 116 880	22 428 934	46 233	4 673 490	28 552 281
	2019	28 773	1 304 522	5 282 127	11 975	3 069 443	22 869 440	40 748	4 373 965	28 151 567
	2020	18 678	858 792	3 708 834	8 053	1 953 177	14 655 379	26 731	2 811 969	18 364 213

Table 10 – Number, square metres and value of flats and townhouses reported as completed to municipalities by province

Municipal reporting aggregated to provincial level by year		Flats			Townhouses			Flats and townhouses reported as completed to municipalities		
		Number of units	Total square metres	Total value R'000	Number of units	Total square metres	Total value R'000	Number of units	Total square metres	Total value R'000
Western Cape	2018	4 918	448 306	3 521 139	1 143	215 224	1 622 433	6 061	663 530	5 143 572
	2019	5 038	482 143	3 878 623	1 436	258 687	1 931 578	6 474	740 830	5 810 201
	2020	3 362	304 298	2 480 962	668	133 470	1 040 171	4 030	437 768	3 521 133
Eastern Cape	2018	170	10 457	65 510	182	31 244	204 976	352	41 701	270 486
	2019	166	10 194	64 709	231	30 750	206 721	397	40 944	271 430
	2020	130	10 654	60 477	156	18 833	122 644	286	29 487	183 121
Northern Cape	2018	0	0	0	2	221	1 737	2	221	1 737
	2019	0	0	0	33	3 209	25 763	33	3 209	25 763
	2020	0	0	0	22	1 761	13 806	22	1 761	13 806
Free State	2018	85	3 987	29 528	263	40 895	305 674	348	44 882	335 202
	2019	34	1 599	9 385	7	1 057	6 384	41	2 656	15 769
	2020	0	0	0	36	10 313	83 246	36	10 313	83 246
KwaZulu-Natal	2018	486	72 002	854 293	359	78 210	667 413	845	150 212	1 521 706
	2019	1 533	196 925	2 336 111	438	89 464	772 065	1 971	286 389	3 108 176
	2020	1 008	105 705	1 188 827	552	74 318	682 326	1 560	180 023	1 871 153
North West	2018	755	46 188	275 911	450	64 784	365 108	1 205	110 972	641 019
	2019	569	38 376	236 713	101	13 519	73 650	670	51 895	310 363
	2020	315	27 758	188 028	106	13 009	87 713	421	40 767	275 741
Gauteng	2018	2 641	177 428	1 997 033	6 590	1 398 766	10 802 684	9 231	1 576 194	12 799 717
	2019	3 854	228 632	2 345 155	12 081	2 138 671	17 192 834	15 935	2 367 303	19 537 989
	2020	590	40 715	461 740	3 306	475 835	4 148 688	3 896	516 550	4 610 428
Mpumalanga	2018	259	16 345	95 597	177	21 897	119 585	436	38 242	215 182
	2019	196	8 520	47 331	285	36 405	196 426	481	44 925	243 757
	2020	115	9 971	62 863	51	5 980	33 294	166	15 951	96 157

Table 10 – Number, square metres and value of flats and townhouses reported as completed to municipalities by province (concluded)

Municipal reporting aggregated to provincial level by year		Flats			Townhouses			Flats and townhouses reported as completed to municipalities		
		Number of units	Total square metres	Total value R'000	Number of units	Total square metres	Total value R'000	Number of units	Total square metres	Total value R'000
Limpopo	2018	35	3 754	21 145	99	12 341	72 418	134	16 095	93 563
	2019	110	8 229	45 235	270	34 839	194 312	380	43 068	239 547
	2020	112	6 961	36 767	170	20 271	117 682	282	27 232	154 449
South Africa	2018	9 349	778 467	6 860 156	9 265	1 863 582	14 162 028	18 614	2 642 049	21 022 184
	2019	11 500	974 618	8 963 262	14 882	2 606 601	20 599 733	26 382	3 581 219	29 562 995
	2020	5 632	506 062	4 479 664	5 067	753 790	6 329 570	10 699	1 259 852	10 809 234

Table 11.1 – Number, square metres and value of non-residential buildings reported as completed to municipalities: office and banking space, shopping space and industrial and warehouse space by province

Municipal reporting aggregated to provincial level by year		Non-residential buildings								
		Office and banking space			Shopping space			Industrial and warehouse space		
		Number of buildings	Total square metres	Total value R'000	Number of buildings	Total square metres	Total value R'000	Number of buildings	Total square metres	Total value R'000
Western Cape	2018	39	165 581	1 351 049	35	100 341	772 550	210	321 864	2 072 009
	2019	23	75 077	607 757	40	141 189	1 197 500	234	413 758	2 799 337
	2020	22	88 231	713 491	38	108 930	839 849	104	190 149	1 284 734
Eastern Cape	2018	5	4 364	27 026	23	25 555	154 902	41	72 517	421 203
	2019	8	13 191	84 518	15	14 147	99 683	49	109 318	729 414
	2020	8	2 879	19 198	18	12 180	67 854	28	90 423	593 482
Northern Cape	2018	3	1 760	13 051	7	8 467	37 905	11	5 044	32 334
	2019	4	1 098	8 743	3	953	6 641	16	13 575	104 368
	2020	5	1 918	12 551	15	12 211	91 014	21	20 449	158 694
Free State	2018	6	7 786	57 772	7	4 240	23 322	8	14 793	113 216
	2019	4	2 239	11 872	3	985	5 765	9	12 387	79 545
	2020	2	6 713	54 187	2	3 620	28 517	9	16 444	127 891
KwaZulu-Natal	2018	21	95 218	951 790	42	79 250	684 211	80	147 211	897 656
	2019	10	118 241	1 290 650	51	80 628	753 923	75	378 797	2 283 124
	2020	17	31 880	316 107	21	21 304	167 837	50	425 098	2 558 685
North West	2018	5	2 379	13 155	12	15 534	80 616	17	30 613	156 834
	2019	7	5 745	30 483	19	20 131	119 488	12	16 024	82 158
	2020	5	5 785	35 774	10	21 516	140 758	7	10 017	53 036
Gauteng	2018	62	349 086	3 424 024	83	120 036	1 106 812	119	578 113	3 232 919
	2019	47	363 182	3 846 968	109	346 419	3 391 428	96	520 196	3 022 906
	2020	17	254 755	2 527 988	26	78 085	807 222	62	340 737	2 046 428
Mpumalanga	2018	6	3 251	17 191	30	22 828	117 749	17	19 090	114 679
	2019	15	24 702	166 173	14	33 425	213 649	19	24 880	148 882
	2020	3	3 681	18 924	19	50 341	451 299	19	21 457	150 795

Table 11.1 – Number, square metres and value of non-residential buildings reported as completed to municipalities: office and banking space, shopping space and industrial and warehouse space by province (concluded)

Municipal reporting aggregated to provincial level by year		Non-residential buildings								
		Office and banking space			Shopping space			Industrial and warehouse space		
		Number of buildings	Total square metres	Total value R'000	Number of buildings	Total square metres	Total value R'000	Number of buildings	Total square metres	Total value R'000
Limpopo	2018	9	12 805	69 033	36	65 710	361 078	15	20 047	106 591
	2019	5	3 301	17 945	18	14 971	82 781	20	16 976	92 803
	2020	5	8 766	52 595	16	6 407	41 658	18	38 357	221 191
South Africa	2018	156	642 230	5 924 091	275	441 961	3 339 145	518	1 209 292	7 147 441
	2019	123	606 776	6 065 109	272	652 848	5 870 858	530	1 505 911	9 342 537
	2020	84	404 608	3 750 815	165	314 594	2 636 008	318	1 153 131	7 194 936

Table 11.2 – Number, square metres and value of non-residential buildings reported as completed to municipalities: schools, nursery schools, crèches, hospitals, churches, sports club, recreation clubs and all other space by province

Municipal reporting aggregated to provincial level by year		Non-residential buildings											
		Schools, nursery schools, crèches and hospitals			Churches, sport and recreation clubs			All other non-residential space			Non-residential buildings reported as completed to municipalities ¹		
		Number of buildings	Total square metres	Total value R'000	Number of buildings	Total square metres	Total value R'000	Number of buildings	Total square metres	Total value R'000	Number of buildings	Total square metres	Total value R'000
Western Cape	2018	21	50 833	352 409	30	17 120	111 906	26	23 530	163 955	361	679 269	4 823 878
	2019	29	88 998	697 466	17	8 937	59 250	33	66 474	465 184	376	794 433	5 826 494
	2020	19	42 451	302 915	14	9 794	65 869	29	24 831	171 692	226	464 386	3 378 550
Eastern Cape	2018	12	16 247	102 420	15	7 125	36 102	10	1 271	7 055	106	127 079	748 708
	2019	3	26 322	165 932	10	5 734	35 554	11	1 942	12 796	96	170 654	1 127 897
	2020	7	8 652	52 123	11	6 355	37 241	3	214	1 127	75	120 703	771 025
Northern Cape	2018	7	1 259	6 051	4	1 810	10 098	0	0	0	32	18 340	99 439
	2019	3	1 141	8 482	2	346	2 395	0	0	0	28	17 113	130 629
	2020	2	469	3 301	5	2 257	16 502	0	0	0	48	37 304	282 062
Free State	2018	3	10 280	78 054	2	667	3 447	1	200	1 000	27	37 966	276 811
	2019	1	378	3 051	1	478	3 692	0	0	0	18	16 467	103 925
	2020	0	0	0	1	536	2 700	0	0	0	14	27 313	213 295
KwaZulu-Natal	2018	8	15 260	120 821	17	10 483	94 284	1	349	2 827	169	347 771	2 751 589
	2019	6	24 157	128 098	14	12 668	113 167	9	16 914	125 761	165	631 405	4 694 723
	2020	4	8 072	89 450	5	6 110	39 632	2	253	2 884	99	492 717	3 174 595
North West	2018	4	3 863	19 314	8	5 378	29 953	1	144	914	47	57 911	300 786
	2019	5	8 191	43 682	6	3 946	21 909	1	200	993	50	54 237	298 713
	2020	2	2 194	12 255	1	357	1 479	0	0	0	25	39 869	243 302
Gauteng	2018	14	51 972	410 768	7	9 577	60 246	8	1 750	15 526	293	1 110 534	8 250 295
	2019	26	101 996	748 339	10	26 100	203 219	5	10 448	79 672	293	1 368 341	11 292 532
	2020	9	19 476	154 128	3	2 045	14 208	4	1 278	11 692	121	696 376	5 561 666
Mpumalanga	2018	4	6 684	34 429	9	5 378	31 943	2	6 791	33 724	68	64 022	349 715
	2019	3	1 073	5 869	5	3 903	21 339	5	3 250	16 181	61	91 233	572 093
	2020	6	10 716	79 631	4	1 949	11 570	3	183	992	54	88 327	713 211

¹ Non-residential buildings include office and banking space, shopping space, industrial and warehouse space, schools, nursery schools, crèches, hospitals, churches, sport clubs, recreation clubs and all other space (Tables 11.1 and 11.2).

Table 11.2 – Number, square metres and value of non-residential buildings reported as completed to municipalities: schools, nursery schools, crèches, hospitals, churches, sports club, recreation clubs and all other space by province (concluded)

Municipal reporting aggregated to provincial level by year		Non-residential buildings											
		Schools, nursery schools, crèches and hospitals			Churches, sport and recreation clubs			All other non-residential space			Non-residential buildings reported as completed to municipalities ¹		
		Number of buildings	Total square metres	Total value R'000	Number of buildings	Total square metres	Total value R'000	Number of buildings	Total square metres	Total value R'000	Number of buildings	Total square metres	Total value R'000
Limpopo	2018	6	8 318	38 497	10	3 661	16 642	0	0	0	76	110 541	591 841
	2019	8	4 388	20 460	1	1 051	4 793	2	778	4 292	54	41 465	223 074
	2020	3	6 055	33 190	4	3 747	21 973	2	1 926	11 165	48	65 258	381 772
South Africa	2018	79	164 716	1 162 763	102	61 199	394 621	49	34 035	225 001	1 179	2 553 433	18 193 062
	2019	84	256 644	1 821 379	66	63 163	465 318	66	100 006	704 879	1 141	3 185 348	24 270 080
	2020	52	98 085	726 993	48	33 150	211 174	43	28 685	199 552	710	2 032 253	14 719 478

¹ Non-residential buildings include office and banking space, shopping space, industrial and warehouse space, schools, nursery schools, crèches, hospitals, churches, sport clubs, recreation clubs and all other space (Tables 11.1 and 11.2).

Table 12 – Number, square metres and value of additions and alterations reported as completed to municipalities by province

Municipal reporting aggregated to provincial level by year		Additions and alterations to residential buildings			Additions and alterations to non-residential buildings			Internal alterations	Additions and alterations reported as completed to municipalities		
		Number of plans	Total square metres	Total value R'000	Number of plans	Total square metres	Total value R'000	Total value R'000	Number of plans	Total square metres	Total value R'000
Western Cape	2018	8 442	551 218	3 567 152	589	197 339	1 374 969	503 809	9 031	748 557	5 445 930
	2019	7 632	510 982	3 469 022	554	179 508	1 293 733	628 600	8 186	690 490	5 391 355
	2020	6 521	487 748	3 530 690	543	228 397	1 606 254	1 120 749	7 064	716 145	6 257 693
Eastern Cape	2018	1 983	133 762	805 943	113	43 126	269 851	41 208	2 096	176 888	1 117 002
	2019	2 506	174 594	1 136 762	174	67 387	444 210	49 466	2 680	241 981	1 630 438
	2020	1 415	97 251	657 922	81	28 311	184 915	40 067	1 496	125 562	882 904
Northern Cape	2018	644	47 543	319 789	37	11 594	79 795	16 897	681	59 137	416 481
	2019	563	47 211	324 981	33	9 177	64 733	8 206	596	56 388	397 920
	2020	784	42 290	302 164	17	9 663	77 356	3 261	801	51 953	382 781
Free State	2018	440	29 999	172 367	20	9 208	66 695	28 976	460	39 207	268 038
	2019	658	42 541	237 292	16	3 725	23 188	20 399	674	46 266	280 879
	2020	200	14 502	85 647	13	4 601	33 724	13 493	213	19 103	132 864
KwaZulu-Natal	2018	2 328	190 644	1 980 979	146	49 595	433 669	120 915	2 474	240 239	2 535 563
	2019	2 003	147 331	1 556 503	138	88 950	861 855	223 920	2 141	236 281	2 642 278
	2020	1 110	93 917	968 046	71	32 734	349 810	72 473	1 181	126 651	1 390 329
North West	2018	909	68 741	397 117	23	10 261	64 771	10 156	932	79 002	472 044
	2019	601	46 781	267 720	49	20 882	131 164	5 631	650	67 663	404 515
	2020	314	30 794	185 755	21	5 769	39 285	19 360	335	36 563	244 400
Gauteng	2018	2 521	244 941	1 891 204	143	100 239	753 790	66 612	2 664	345 180	2 711 606
	2019	2 446	251 915	2 042 789	129	109 189	790 279	52 273	2 575	361 104	2 885 341
	2020	1 344	146 852	1 209 072	83	69 515	600 914	34 283	1 427	216 367	1 844 269
Mpumalanga	2018	761	66 433	377 337	24	11 363	57 876	207 249	785	77 796	642 462
	2019	859	64 645	381 335	24	5 966	32 679	263 011	883	70 611	677 025
	2020	465	29 423	176 097	32	15 444	98 616	125 657	497	44 867	400 370

Table 12 – Number, square metres and value of additions and alterations reported as completed to municipalities by province (concluded)

Municipal reporting aggregated to provincial level by year		Additions and alterations to residential buildings			Additions and alterations to non-residential buildings			Internal alterations	Additions and alterations reported as completed to municipalities		
		Number of plans	Total square metres	Total value R'000	Number of plans	Total square metres	Total value R'000	Total value R'000	Number of plans	Total square metres	Total value R'000
Limpopo	2018	310	38 506	196 357	31	12 083	65 356	96 049	341	50 589	357 762
	2019	293	25 196	136 567	34	8 002	39 930	29 942	327	33 198	206 439
	2020	200	15 115	86 912	27	11 961	70 052	23 485	227	27 076	180 449
South Africa	2018	18 338	1 371 787	9 708 245	1 126	444 808	3 166 772	1 091 871	19 464	1 816 595	13 966 888
	2019	17 561	1 311 196	9 552 971	1 151	492 786	3 681 771	1 281 448	18 712	1 803 982	14 516 190
	2020	12 353	957 892	7 202 305	888	406 395	3 060 926	1 452 828	13 241	1 364 287	11 716 059

Table 13 – Municipalities covered in the monthly and annual surveys by province: Western Cape

Municipality	Main towns/areas within municipal boundaries	District municipality
Beaufort West ²	Beaufort West	Central Karoo
Bergrivier ²	Aurora, Piketberg, Porterville, Redelinghuys, Velddrif	West Coast
Bitou ¹	Plettenberg Bay	Eden
Breede Valley ¹	De Doorns, Rawsonville, Touws River, Worcester	Cape Winelands
Cape Agulhas ²	Bredasdorp, Napier, Struisbaai	Overberg
Cederberg ²	Cederberg, Citrusdal, Clanwilliam, Graafwater, Lamberts Bay, Leipoldtville	West Coast
City of Cape Town ¹	Bellville, Blue Downs, Brackenfell, Cape Town City Centre, Durbanville, Eersterivier, Fish Hoek, Goodwood, Gordon's Bay, Gugulethu, Khayelitsha, Kraaifontein, Kuilsrivier, Langa, Mfuleni, Milnerton, Mitchells Plain, Nyanga, Parow, Plumstead, Simon's Town, Somerset West, Strand	City of Cape Town
Drakenstein ¹	Blouville, Hermon, Paarl, Soetendal, Wellington	Cape Winelands
George ¹	George, Herolds Bay, Pacaltsdorp, Wilderness	Eden
Hessequa ²	Albertinia, Gouritsmond, Heidelberg, Riversdale, Slangrivier, Stilbaai	Eden
Kannaland ²	Calitzdorp, Ladismith, Van Wyksdorp, Zoar	Eden
Knysna ¹	Knysna, Sedgefield	Eden
Laingsburg ²	Laingsburg	Central Karoo
Langeberg ²	Ashton, Bonnievale, McGregor, Montagu, Robertson	Cape Winelands
Matzikama ²	Doringbaai, Klawer, Lutzville, Strandfontein, Van Rhynsdorp, Vredendal	West Coast
Mossel Bay ¹	Groot Brakrivier, Herbertsdale, Klein Brakrivier, Mossel Bay	Eden
Oudtshoorn ¹	De Rust, Dysseisdorp, Oudtshoorn	Eden

¹ Included in monthly survey.² Included in annual survey.

Table 13 – Municipalities covered in the monthly and annual surveys by province: Western Cape (concluded)

Municipality	Main towns/areas within municipal boundaries	District municipality
Overstrand ¹	Betty's Bay, Fisherhaven, Gansbaai, Hangklip, Hawston, Hermanus, Kleinmond, Onrus, Rooiels Bay, Stanford, Vermont	Overberg
Prince Albert ²	Leeu-Gamka, Prince Albert	Central Karoo
Saldanha Bay ¹	Hopefield, Langebaan, Saldanha, Vredenburg	West Coast
Stellenbosch ¹	Franschhoek, Pniel, Stellenbosch	Cape Winelands
Swartland ¹	Darling, Koringberg, Malmesbury, Moorreesburg, Yzerfontein	West Coast
Swellendam ²	Barrydale, Buffeljagsrivier, Stormsvlei, Suurbraak, Swellendam	Overberg
Theewaterskloof ²	Caledon, Genadendal, Grabouw, Greyton, Riviersonderend, Villiersdorp	Overberg
Witzenberg ²	Ceres, Prince Alfred Hamlet, Tulbagh, Wolseley	Cape Winelands

¹ Included in monthly survey.

² Included in annual survey.

Table 14 – Municipalities covered in the monthly and annual surveys by province: Eastern Cape

Municipality	Main towns/areas within municipal boundaries	District municipality
Amahlathi ²	Cathcart, Kei Road, Keiskammahoek, Stutterheim	Amathole
Baviaans ²	Steytlerville, Willowmore	Sarah Baartman
Blue Crane Route ²	Cookhouse, Pearston, Somerset East	Sarah Baartman
Buffalo City ¹	Beacon Bay, Bisho, East London, Gonubie, Mdantsane, Qonce, Zwelitsha	Buffalo City
Camdeboo ²	Aberdeen, Graaff-Reinet, Nieu-Bethesda	Sarah Baartman
Elundini ²	Maclear, Mount Fletcher, Ugie	Joe Gqabi
Emalahleni ²	Dordrecht, Indwe, Lady Frere	Chris Hani
Engcobo ²	Coghlan, Langdon, Ngcobo, Whitmore	Chris Hani
Gariep ²	Burgersdorp, Knapdaar, Oviston, Steynsburg, Venterstad	Joe Gqabi
Great Kei ²	Kei Mouth, Komga	Amathole
Ikwezi ²	Jansenville, Klipplaat	Sarah Baartman
Ingquza Hill ²	Flagstaff, Lusikisiki	O R Tambo
Inkwanca ²	Molteno, Sterkstroom, Stormberg	Chris Hani
Intsika Yethu ²	Cofimvaba, Qombolo, Tsomo	Chris Hani
Inxuba Yethemba ²	Cradock, Middelburg	Chris Hani
King Sabata Dalindyebo ¹	Mqanduli, Mthatha	O R Tambo

¹ Included in monthly survey.

² Included in annual survey.

Table 14 – Municipalities covered in the monthly and annual surveys by province: Eastern Cape (continued)

Municipality	Main towns/areas within municipal boundaries	District municipality
Kou-Kamma ²	Joubertina, Kareedouw	Sarah Baartman
Kouga ¹	Cape St Francis, Hankey, Humansdorp, Jeffreys Bay, Oyster Bay, Patensie, St Francis Bay	Sarah Baartman
Lukhanji ²	Queenstown, Sada, Whittlesea	Chris Hani
Makana ¹	Alicedale, Makhanda, Riebeeck East	Sarah Baartman
Matatiele ²	Cedarville, Matatiele	Alfred Nzo
Mbhashe ²	Elliotdale, Dutywa, Willowvale	Amathole
Mbizana ²	Bizana	O R Tambo
Mhlontlo ²	Qumbu, Sidwadweni, St Cuthberts, Tsolo	O R Tambo
Mnquma ²	Butterworth, Centane, Ngqamakhwe	Amathole
Ndlambe ¹	Alexandria, Bathurst, Kenton-on-Sea, Port Alfred	Sarah Baartman
Nelson Mandela Bay ¹	Despatch, Gqeberha, Uitenhage	Nelson Mandela Bay
Ngqushwa ²	Hamburg, Peddie	Amathole
Nkonkobe ²	Alice, Fort Beaufort, Hogsback, Middeldrift, Seymour	Amathole
Ntabankulu ²	Ntabankulu	O R Tambo
Nxuba ²	Adelaide, Bedford	Amathole
Nyandeni ²	Libode, Misty Mountain, Ngqeleni, Nobantu, Old Bunting, Stoneyridge, Tshani	O R Tambo

¹ Included in monthly survey.² Included in annual survey.

Table 14 – Municipalities covered in the monthly and annual surveys by province: Eastern Cape (concluded)

Municipality	Main towns/areas within municipal boundaries	District municipality
Port St Johns ²	Gemvale, Ntshilini, Port St Johns, Tombo	O R Tambo
Sakhisizwe ²	Cala, Elliot	Chris Hani
Senqu ²	Barkly East, Lady Grey, Rhodes, Rossouw, Sterkspruit	Joe Gqabi
Sundays River Valley ²	Kirkwood, Paterson	Sarah Baartman
Tsolwana ²	Hofmeyr, Spring Valley, Tarkastad	Chris Hani
Umzimvubu ²	Mount Ayliff, Mount Frere	Alfred Nzo
Walter Sisulu ¹	Aliwal North, Jamestown	Joe Gqabi

¹ Included in monthly survey.

² Included in annual survey.

Table 15 – Municipalities covered in the monthly and annual surveys by province: Northern Cape

Municipality	Main towns/areas within municipal boundaries	District municipality
!Kheis ²	Boegoeberg, Groblershoop, Kleinbegin, Wegdraai	Z F Mgcawu
Dawid Kruiper ¹	Dagbreek, Gelukspruit, Karos, Louisvale, Sprigg, Upington	Z F Mgcawu
Dikgatlong ²	Barkly West, Delportshoop, Elandsdrift, Longlands, Mount Rupert, Windsorton	Frances Baard
Emthanjeni ²	Britstown, De Aar, Hanover	Pixley ka Seme
Ga-Segonyana ¹	Bekker, Ga-Mopedi, Gathlose, Kuruman, Mothibistad, Seoding	John Taolo Gaetsewe
Gamagara ²	Dibeng, Kathu, Sishen	John Taolo Gaetsewe
Hantam ²	Brandkop, Brandvlei, Calvinia, Hantam, Kanakies, Loeriesfontein, Niewoudtville	Namakwa
Joe Morolong ²	Bendell, Bothithong, Ditshipeng, Maswehatshe, Metsemantsi, Tsineng	John Taolo Gaetsewe
Kai !Garib ¹	Kakamas, Keimoes, Kenhardt	Z F Mgcawu
Kamiesberg ²	Garies, Hondeklipbaai, Kamieskroon, Leliefontein, Soebatsfontein	Namakwa
Kareeberg ²	Carnarvon, Vosburg, Vanwyksvlei	Pixley ka Seme
Karoo Hoogland ²	Fraserburg, Sutherland, Williston	Namakwa
Kgatelopele ²	Ariesfontein, Danielskuil, Lime Acres, Owendale, Papkuil, Silver Streams, Swartputs	Z F Mgcawu

¹ Included in monthly survey.

² Included in annual survey.

Table 15 – Municipalities covered in the monthly and annual surveys by province: Northern Cape (concluded)

Municipality	Main towns/areas within municipal boundaries	District municipality
Khâi-Ma ²	Namies, Pella, Pofadder	Namakwa
Magareng ²	Content, Warrenton, Windsorton Road	Frances Baard
Nama Khol ²	Concordia, Komaggas, Okiep, Springbok, Steinkopf	Namakwa
Phokwane ²	Ganspan, Hartswater, Jan Kempdorp, Pampierstad	Frances Baard
Renosterberg ²	Petrusville, Philipstown, Potfontein, Poupan, Vanderkloof	Pixley ka Seme
Richtersveld ²	Alexander Bay, Eksteenfontein, Kuboes, Lekkersing, Port Nolloth, Sendelingsdrif	Namakwa
SiyaThemba ²	Marydale, Niekerkshoop, Prieska	Pixley ka Seme
Siyancuma ²	Belmont, Campbell, Douglas, Griquatown, Salt Lake	Pixley ka Seme
Sol Plaatje ¹	Kenilworth, Kimberley, Modderrivier, Ritchie, Riverton, Spytfontein	Frances Baard
Thembelihle ²	Hopetown, Kraankuil, Orania, Oranjerivier, Strydenburg	Pixley ka Seme
Tsantsabane ²	Beeshoek, Glosam, Postmasburg	Z F Mgcawu
Ubuntu ²	Loxton, Victoria West, Richmond	Pixley ka Seme
Umsobomvu ²	Agtertang, Colesberg, Norvalspont, Noupoort	Pixley ka Seme

¹ Included in monthly survey.

² Included in annual survey.

Table 16 – Municipalities covered in the monthly and annual surveys by province: Free State

Municipality	Main towns/areas within municipal boundaries	District municipality
Dihlabeng ¹	Bethlehem, Bohlokong, Clarens, Fouriesburg, Paul Roux, Rosendal	Thabo Mofutsanyana
Kopanong ²	Bethulie, Edenburg, Fauresmith, Gariep Dam, Jagersfontein, Philippolis, Reddersburg, Springfontein, Trompsburg	Xhariep
Letsemeng ²	Jacobsdal, Koffiefontein, Luckhoff, Oppermans, Petrusburg	Xhariep
Mafube ²	Cornelia, Frankfort, Namahadi, Roberts Drift, Tweeling, Villiers	Fezile Dabi
Maluti-a-Phofung ¹	Harrismith, Kestell, Phuthaditjhaba	Thabo Mofutsanyana
Mangaung ¹	Bloemfontein, Botshabelo, Thaba Nchu	Mangaung
Mantsopa ¹	Excelsior, Hobhouse, Ladybrand, Manyatseng, Thaba Phatshoa, Tweespruit	Thabo Mofutsanyana
Masilonyana ²	Brandfort, Soutpan, Theunissen, Verkeerdevlei, Winburg	Lejweleputswa
Matjhabeng ¹	Allanridge, Hennenman, Kutlwanong, Meloding, Odendaalsrus, Thabong, Ventersburg, Virginia, Welkom	Lejweleputswa
Metsimaholo ¹	Deneysville, Oranjeville, Sasolburg	Fezile Dabi
Mohokare ²	Rouxville, Smithfield, Zastron	Xhariep

¹ Included in monthly survey.

² Included in annual survey.

Table 16 – Municipalities covered in the monthly and annual surveys by province: Free State (concluded)

Municipality	Main towns/areas within municipal boundaries	District municipality
Moqhaka ¹	Kroonstad, Maokeng, Steynsrus, Viljoenskroon	Fezile Dabi
Nala ²	Bothaville, Wesselsbron	Lejweleputswa
Ngwathe ¹	Edenville, Heilbron, Koppies, Parys, Vredefort	Fezile Dabi
Nketoana ²	Arlington, Lindley, Petrus Steyn, Reitz	Thabo Mofutsanyana
Phumelela ²	Memel, Vrede, Warden	Thabo Mofutsanyana
Setsoto ²	Clocolan, Ficksburg, Marquard, Senekal	Thabo Mofutsanyana
Tokologo ²	Boshof, Dealesville, Hertzogville, Wolwespruit	Lejweleputswa
Tswelopele ²	Bultfontein, Hoopstad	Lejweleputswa

¹ Included in monthly survey.

² Included in annual survey.

Table 17 – Municipalities covered in the monthly and annual surveys by province: KwaZulu-Natal

Municipality	Main towns/areas within municipal boundaries	District municipality
AbaQulusi ²	Alpha, Calvert, Gluckstadt, Hlobane, Louwsburg, Ngome, Swart Umfolozi, Vryheid	Zululand
Alfred Duma ¹	Colenso, Ekuvukeni, Etholeni, Ingwe, Kliprivier, Ladysmith, Limehill, Mabaso, Rockcliff, Sams Hoek	uThukela
Big 5 Hlabisa ²	Hlabisa	uMkhanyakude
City of uMhlatuze ¹	Empangeni, Richards Bay	King Cetshwayo
Dannhauser ²	Dannhauser, Hattingspruit	Amajuba
Dr Nkosazana Dlamini-Zuma ²	Amangwane, Bulwer, Coleford, Creighton, Deepdale, Donnybrook, Himeville, Ncwadi, Pevensey, Sizanenjana, Underberg	Harry Gwala
eDumbe ²	Bivane, Braunschweig, Grootspuit, Luneburg, Mpemvana, Paulpietersburg	Zululand
eMadlangeni ²	Blood River, Groenvlei, Kingsley, Utrecht	Amajuba
Endumeni ²	Dundee, Glencoe, Van Rooyen, Vant's Drift, Wasbank	Umzinyathi
eThekwini ¹	Amanzimtoti, Botha's Hill, Cato Ridge, Clermont, Drummond, Durban, Hillcrest, Inchanga, Kingsburgh, Kloof, KwaDabeka, KwaMakhutha, KwaMashu, Mount Edgecombe, Mpumalanga, New Germany, Pinetown, Queensburgh, Tongaat, Umdloti, Umhlanga, Umlazi, Verulam, Westville	eThekwini
Greater Kokstad ¹	Bonny Ridge, Franklin, Kingscote, Kokstad, New Amalfi, Swartberg	Harry Gwala
Imbabazane ²	Bhoshi, KwaDlamini, Loskop, Ndaba, Rosedale	uThukela
Impendle ²	Boston, Impendle, Lower Loteni, Runnymede	uMgungundlovu

¹ Included in monthly survey.² Included in annual survey.

Table 17 – Municipalities covered in the monthly and annual surveys by province: KwaZulu-Natal (continued)

Municipality	Main towns/areas within municipal boundaries	District municipality
Jozini ²	Bayala, Ingwavuma, Jozini, Mkhuze, Ndumo, Ubombo	uMkhanyakude
KwaDukuza ¹	Ballito, Blythedale Beach, Shakaskraal, Stanger, Tinley Manor Beach, Zinkwazi Beach	Ilembe
Mandeni ²	Isithebe, Mandeni, Newark, Nyoni, Sundumbili, Tugela, Tugela Mouth	Ilembe
Maphumulo ²	Fort Mtombeni, Maphumulo, Ntunjambi, Otimati	Ilembe
Mkhambathini ²	Camperdown, Edinglassie, Eston, Manderston, Mid-Illovo, Umgeni Dam, Umlaas Road	uMgungundlovu
Mpofana ²	Hidcote, Middelrus, Mooi River, Redcliffe, Rietvlei, Rosetta, The Grove	uMgungundlovu
Msinga ²	Elandskraal, Helpmekaar, Keate's Drift, Ngubevu, Pomeroy, Rorke's Drift, Tugela Ferry	Umzinyathi
Msunduzi ¹	Edendale, Ashburton, Pietermaritzburg	uMgungundlovu
Mthonjaneni ²	Melmoth, Mthonjaneni, Mnanyando, Ndundulu	King Cetshwayo
Mtubatuba ²	Mtubatuba, River View, St Lucia	uMkhanyakude
Ndwedwe ²	Glendale, Ndwedwe, Nsuze	Ilembe
Newcastle ¹	Madadeni, Newcastle, Osizweni	Amajuba
Nkandla ²	Dlolwana, Nkandla, Osborn	King Cetshwayo
Nongoma ²	Nongoma, Thokazi	Zululand

¹ Included in monthly survey.² Included in annual survey.

Table 17 – Municipalities covered in the monthly and annual surveys by province: KwaZulu-Natal (continued)

Municipality	Main towns/areas within municipal boundaries	District municipality
Nquthu ²	Mangeni, Nomamba, Nquthu, Nondweni, Ntabebomvu, Silutshana	Umzinyathi
Ntambanana ²	Ntambanana, Umunywana	King Cetshwayo
Okhahlamba ²	Bergville, Cathkin Park, Winterton	uThukela
Ray Nkonyeni ¹	Hibberdene, Margate, Marina Beach, Munster, Port Edward, Port Shepstone, Ramsgate, Shelly Beach, Southbroom, St Michael's-on-Sea, Trafalgar, Uvongo	Ugu
Richmond ²	Arnold's Hill, Byrne, Greenhill, Hella Hella, KwaMagoda, Ndaleni, Nelsrus, Richmond	uMgungundlovu
Ubuhlebezwe ²	Highflats, Hlutankungu, Ixopo, Nhlavini	Harry Gwala
Ulundi ²	Babanango, Ilangakazi, KwaCeza, Mahlabatini, Mpungamhlophe, Ulundi	Zululand
Umdoni ¹	Pennington, Scottburgh, Umzinto	Ugu
uMfolozi ²	KwaMbonambi, Mposa, Teza	King Cetshwayo
uMhlabuyalingana ²	Emanguzi, Mbazwana, Mseleni	uMkhanyakude
uMlalazi ²	Amatikulu, Blackburn, Eshowe, Gingindlovu, Middledrift, Mtunzini, Nkwalini	King Cetshwayo
uMngeni ¹	Hilton, Howick, Nottingham Road	uMgungundlovu
Umshwathi ²	Albert Falls, Bruyns Hill, Dalton, Harburg, New Hanover, Wartburg	uMgungundlovu
Umtshezi ²	Ennersdale, Estcourt, Frere, Khwezi, Lowlands, South Downs, Webesi, Weenen	uThukela
Umuziwabantu ²	Harding, Weza	Ugu
Umvoti ²	Ahrens, Greytown, Jameson's Drift, Kranskop, Muden, Sevenoaks	Umzinyathi

¹ Included in monthly survey.² Included in annual survey.

Table 17 – Municipalities covered in the monthly and annual surveys by province: KwaZulu-Natal (concluded)

Municipality	Main towns/areas within municipal boundaries	District municipality
Umzimkhulu ²	Bisi, Bontrand, Riverside, Sneezewood, Stafford's Post, Umzimkhulu	Harry Gwala
Umzumbe ²	Glen Echo, Hlokozi, Kwa-Dweshula, Mehlomyama, Msinsini, Nyavini, Turton	Ugu
uPhongolo ²	Candover, Golela, Kingholm, Magudu, Mahlangasi, Nkonkoni, Pongola	Zululand

¹ Included in monthly survey.

² Included in annual survey.

Table 18 – Municipalities covered in the monthly and annual surveys by province: North West

Municipality	Main towns/areas within municipal boundaries	District municipality
City of Matlosana ¹	Hartbeesfontein, Klerksdorp, Orkney, Stilfontein	Dr Kenneth Kaunda
Ditsobotla ¹	Coligny, Itsooseng, Lichtenburg	Ngaka Modiri Molema
Greater Taung ²	Lykso, Madipelesa, Pudimoe, Reivilo, Steekdorings, Taung	Dr Ruth Segomotsi Mompati
Kagisano-Molopo ²	Alettasrus, Algiers, Coetzersdam, Craffhole, Geluk, Morokweng, Bray, Moloporivier, Pomfret, Vorstershoop, Vergeleë	Dr Ruth Segomotsi Mompati
Kgetlengrivier ²	Derby, Koster, Lindleyspoort, Millvale, Rusverby, Swartruggens	Bojanala Platinum
Lekwa-Teemane ²	Bloemhof, Britten, Christiana	Dr Ruth Segomotsi Mompati
Madibeng ¹	Brits, De Wildt, Hartbeespoort, Letlhabile	Bojanala Platinum
Mahikeng ¹	Mahikeng, Ottoshoop	Ngaka Modiri Molema
Mamusa ²	Amalia, Glaudina, Koosfontein, Mamusa (Schweizer-Reneke), Migdol	Dr Ruth Segomotsi Mompati
Maquassi Hills ²	Leeudoringstad, Makwassie, Strydpoort, Witpoort, Wolmaransstad	Dr Kenneth Kaunda
Moretele ²	KwaRatsiepane, Makapanstad, Swartbooistad	Bojanala Platinum

¹ Included in monthly survey.

² Included in annual survey.

Table 18 – Municipalities covered in the monthly and annual surveys by province: North West (concluded)

Municipality	Main towns/areas within municipal boundaries	District municipality
Moses Kotane ²	Dwarsberg, Mabaalstad, Mabeskraal, Mogwase, Silkaatskop, Sun City	Bojanala Platinum
Naledi ¹	Stella, Vryburg	Dr Ruth Segomotsi Mompati
Ramotshere Moiloa ¹	Zeerust	Ngaka Modiri Molema
Ratlou ²	Kraaipan, Madibogo, Setlagole	Ngaka Modiri Molema
Rustenburg ¹	Marikana, Rustenburg	Bojanala Platinum
Tlokwe City Council ¹	Potchefstroom	Dr Kenneth Kaunda
Tswaing ²	Delareyville, Gerdau, Ottosdal, Sannieshof	Ngaka Modiri Molema
Ventersdorp ²	Dovesdale, Klerkskraal, Mesa, Swartplaas, Ventersdorp	Dr Kenneth Kaunda

¹ Included in monthly survey.

² Included in annual survey.

Table 19 – Municipalities covered in the monthly and annual surveys by province: Gauteng

Municipality	Main towns/areas within municipal boundaries	District municipality
City of Johannesburg ¹	Alexandra, Eikenhof, Eldorado Park, Ennerdale, Fourways, Florida, Grasmere, Halfway House, Honeydew, Johannesburg, Kyalami, Lawley Estate, Lenasia, Midrand, Modderfontein, Randburg, Randjiesfontein, Rivonia, Roodepoort, Sandton, Soweto, Van Wyksrust	City of Johannesburg
City of Tshwane ¹	Akasia, Atteridgeville, Babelegi, Bon Accord, Bronkhorstspuit, Centurion, Diloppe, Doornrandjies, Ekangala, Erasmia, Ga-Mokone, Ga-Rankuwa, Garsfontein, Hammanskraal, Irene, Klippan, Mabopane, Mamelodi, Onderstepoort, Pinedene, Pretoria, Pretoria North, Soshanguve, Temba, Tierpoort, Tswaiing, Valhalla, Welbekend, Winterveld	City of Tshwane
Ekurhuleni ¹	Alberton, Bedfordview, Benoni, Boksburg, Brakpan, Daveyton, Duduza, Edenvale, Germiston, Kattlehong, Kempton Park, KwaThema, Nigel, Springs, Tembisa, Thokoza, Tsakane, Vosloorus	Ekurhuleni
Emfuleni ¹	Evaton, Boipatong, Bophelong, Sebokeng, Sharpeville, Vanderbijlpark, Vereeniging	Sedibeng
Lesedi ¹	Heidelberg, Rensburgdorp, Ratanda	Sedibeng
Merafong City ¹	Carletonville, Fochville, Khutsong	West Rand
Midvaal ¹	Daleside, De Deur, Henly-on-Klip, Highbury, Meyerton, Randvaal, Walkerville	Sedibeng
Mogale City ¹	Battery, Elberta, Hekpoort, Krugersdorp, Luipaardsvlei, Magaliesburg, Muldersdrift, Nooitgedacht, Thorndale	West Rand
Randfontein ¹	Finsbury, Kocksoord, Mohlakeng, Randfontein	West Rand
Westonaria ¹	Bekkersdal, Venterspos, Westonaria	West Rand

¹ Included in monthly survey.

Table 20 – Municipalities covered in the monthly and annual surveys by province: Mpumalanga

Municipality	Main towns/areas within municipal boundaries	District municipality
Bushbuckridge ²	Acornhoek, Dwarsloop, Mkhuhlu, Thulamahashe	Ehlanzeni
Chief Albert Luthuli ²	Badplaas, Carolina, Hartbeeskop, Lochiel	Gert Sibande
City of Mbombela ¹	Hazyview, KaNyamazane, Nelspruit, White River	Ehlanzeni
Dipaleseng ²	Balfour, Dasville, Greylingstad, Grootvlei, Rietbult Estate	Gert Sibande
Dr J S Moroka ²	Siyabuswa	Nkangala
Dr Pixley Ka Isaka Seme ²	Amersfoort, Latemanek, Perdekop, Seme (Volksrust), Wakkerstroom	Gert Sibande
Emakhazeni ²	Belfast, Dullstroom, Machadodorp, Waterval-Boven, Waterval-Onder	Nkangala
Emalahleni ¹	KwaGuqa, Witbank ¹	Nkangala
Govan Mbeki ¹	Bethal, Evander, Leandra, Secunda	Gert Sibande
Lekwa ²	Bettiesdam, Holmdene, Maizefield, Meyersville, Morgenzon, Platrand, Standerton	Gert Sibande
Mkhondo ²	Amsterdam, Anysspruit, Berbice, Comondale, Iswepe, Piet Retief, Wittenberg	Gert Sibande
Msukaligwa ¹	Breyton, Chrissiesmeer, Davel, Ermelo, Lothair, Sheepmoor, Warburton	Gert Sibande

¹ Included in monthly survey.

² Included in annual survey.

Table 20 – Municipalities covered in the monthly and annual surveys by province: Mpumalanga (concluded)

Municipality	Main towns/areas within municipal boundaries	District municipality
Nkomazi ¹	Hectorspruit, Komatipoort, Malelane, Marloth Park	Ehlanzeni
Steve Tshwete ¹	Hendrina, Mhluzi, Middelburg	Nkangala
Thaba Chweu ²	Graskop, Lydenburg, Sabie	Ehlanzeni
Thembisile Hani ²	KwaMhlanga, Moloto, Sybrandskraal	Nkangala
Victor Khanye ¹	Argent, Delmas, Elof, Sundra	Nkangala

¹ Included in monthly survey.

² Included in annual survey.

Table 21 – Municipalities covered in the monthly and annual surveys by province: Limpopo

Municipality	Main towns/areas within municipal boundaries	District municipality
Ba-Phalaborwa ²	Gravelotte, La Cotte, Phalaborwa	Mopani
Bela-Bela ²	Bela-Bela, Mabula, Pienaarsrivier, Rust de Winter, Settlers	Waterberg
Blouberg ²	Alldays, Blinkwater, Blouberg, Gregory, Senwabarwana	Capricorn
Elias Motsoaledi ²	Dennilton, Groblersdal, Hlogotlou, Laersdrif, Maleoskop, Mossiesdal, Motetema, Rooikraal, Roossenekal	Sekhukhune
Ephraim Mogale ²	Hereford, Marble Hall, Moganyaka, Tompi Seleka	Sekhukhune
Fetakgomo Tubatse ²	Burgersfort, Mogaba, Morone, Orighstad, Steelpoort, Zeekoegat	Sekhukhune
Greater Giyani ²	Dzumeri, Giyani, Nkomo, Phalakubeni	Mopani
Greater Letaba ²	Modjadjiskloof, Ga-Kgapane, Mamaila, Mooketsi	Mopani
Greater Tzaneen ¹	Haenertsburg, Letsitele, Politsi, Rubbervale, Nkowankowa, Tzaneen	Mopani
Lepelle-Nkumpi ²	Chuenespoort, Gompies, Lebowakgomo, Zebediela	Capricorn
Lephalale ²	Baltimore, Lephalale, Matlabas, Swartwater, Tolwe	Waterberg
Makhado ²	Carlow, Elim, Buysdorp, Levubu, Makhado, Mara	Vhembe
Makhuduthamaga ²	Glen Cowie, Jane Furse, Malaita, Nebo, Phokwane, Sekhukhune	Sekhukhune
Maruleng ²	Hoedspruit, Kampersrus, Lorraine, Mica, Olifantshoek, Trichardtsdal	Mopani

¹ Included in monthly survey.² Included in annual survey.

Table 21 – Municipalities covered in the monthly and annual surveys by province: Limpopo (concluded)

Municipality	Main towns/areas within municipal boundaries	District municipality
Modimolle ¹	Haakdoring, Mabaleng, Modimolle, Palala	Waterberg
Mogalakwena ¹	Drummondlea, Mahwelereng, Mokopane, Uitzicht	Waterberg
Molemole ²	Blouhaak, Botlokwa, Bylsteel, Groot Spelonke, Kalkbank, Mogwadi, Morebeng, Munnik, Rita, Thorndale	Capricorn
Mookgophong ¹	Crecy, Immerpan, Mookgophong, Thusang	Waterberg
Musina ¹	Beitbridge, Bridgewater, Brombeek, Evangelina, Huntleigh, Mopane, Musina, Tshipise	Vhembe
Mutale ²	Masisi, Mutale, Sagale Spa, Tshilamba	Vhembe
Polokwane ¹	Limburg, Mashashane, Matlala, Polokwane, Seshego	Capricorn
Thabazimbi ¹	Dwaalboom, Northam, Rooiberg, Thabazimbi	Waterberg
Thulamela ²	Malamulele, Mavambe, Mhinga, Muswane, Thohoyandou	Vhembe

¹ Included in monthly survey.

² Included in annual survey.

Explanatory notes

- Introduction** 1 Statistics South Africa (Stats SA) conducts a monthly survey of metropolitan municipalities and large local municipalities on building plans passed and buildings completed for the private sector. An annual survey of the remaining municipalities is conducted regarding buildings completed. This report contains buildings reported as completed to all municipalities, aggregated to provincial level for 2018, 2019 and 2020 (see Part 1 and Part 2). Municipal reporting for buildings completed are available in Excel format from 2014 to 2020. The Excel files are available from Stats SA's website on the publication page for Report-50-11-01 – Building statistics, under 'Additional downloads' on the following link: http://www.statssa.gov.za/?page_id=1854&PPN=Report-50-11-01
- Scope of the survey** 2 This survey covers municipalities conducting activities regarding:
- final inspection of completed buildings and issuing of occupation certificates.
- Statistical unit** 3 The statistical units for the collection of information are metropolitan municipalities, local municipalities and district municipalities.
- Classification** 4 Building activities are classified in Division 5 according to the 1993 edition of the *Standard Industrial Classification of all Economic Activities, (SIC) Fifth Edition, Report No. 09-90-02*. The SIC is based on the 1990 *International Standard Industrial Classification of all Economic Activities (ISIC)* with suitable adaptations for local conditions.
- Survey methodology and design** 5 Stats SA conducts a monthly survey of metropolitan municipalities and large local municipalities on building plans passed and buildings completed. An annual survey of the remaining municipalities is conducted regarding buildings completed. Information regarding building plans passed and buildings completed for the private sector is collected by mail, email and telephone.
- Comparison between building plans passed and buildings completed** 6 No direct comparison can be made between building plans passed and buildings completed for the following reasons:
- an unknown number of building plans are passed and afterwards not executed;
 - if building operations have not commenced within the first year after approval, building plans are resubmitted;
 - the time-lag between the date of passing of a building plan and the date of completion of the building varies considerably; and
 - according to municipalities, final inspections of completed buildings are not always executed and therefore not recorded as completed.
- Number of dwelling-houses** 7 The number of dwelling-houses is shown and not the number of plans passed or completed, since one plan may cover more than one dwelling-house.

Related publications

8 Users may also wish to refer to the following publications:

- P5041.1 *Selected building statistics of the private sector as reported by local government institutions* issued monthly.
- P5041.3 *Selected building statistics of the private sector as reported by local government institutions* issued annually.
- P9101.2 *Actual and Expected Expenditure on Construction by the Public Sector per Region* issued annually.

The following reports contain information of building plans passed (monthly survey) and buildings completed (monthly and annual surveys):

- Report No. 50-11-01 (1996) - with summaries from 1995.
- Report No. 50-11-01 (1997) - with summaries from 1995.
- Report No. 50-11-01 (1998) - with summaries from 1996.
- Report No. 50-11-01 (2001) - with summaries from 1999.
- Report No. 50-11-01 (2002) - with summaries from 2000.

The following reports contain information of buildings completed:

- Report No. 50-11-01 (2003) - with summaries from 2001.
- Report No. 50-11-01 (2004) - with summaries from 2002.
- Report No. 50-11-01 (2005) - with summaries from 2003.
- Report No. 50-11-01 (2006) - with summaries from 2004.
- Report No. 50-11-01 (2007) - with summaries from 2005.
- Report No. 50-11-01 (2008) - with summaries from 2006.
- Report No. 50-11-01 (2009) - with summaries from 2007.
- Report No. 50-11-01 (2010) - with summaries from 2008.
- Report No. 50-11-01 (2011) - with summaries from 2009.
- Report No. 50-11-01 (2012) - with summaries from 2010.
- Report No. 50-11-01 (2013) - with summaries from 2011.
- Report No. 50-11-01 (2014) - with summaries from 2012.
- Report No. 50-11-01 (2015) - with summaries from 2013.
- Report No. 50-11-01 (2016) - with summaries from 2014.
- Report No. 50-11-01 (2017) - with summaries from 2015.
- Report No. 50-11-01 (2018) - with summaries from 2016.
- Report No. 50-11-01 (2019) - with summaries from 2017.

Reliability of estimates

9 Inaccuracies may occur because of imperfections in reporting by municipalities. Every effort is made to reduce errors to a minimum by carefully editing and evaluating data and querying of data.

Rounding-off of figures

10 The figures in the tables have, where necessary, been rounded off to the nearest digit shown. There may, therefore, be slight discrepancies between the sums of the constituent items and the totals shown.

Symbols and abbreviations

11	0	nil or figure too small to publish
	*	revised
	..	not available
	Stats SA	Statistics South Africa
	SIC	Standard Industrial Classification of all Economic Activities
	ISIC	International Standard Industrial Classification of all Economic Activities
	GDP	Gross domestic product
	DMA	District Management Area

Glossary

Additions and alterations	Extensions to existing buildings as well as internal and external alterations of existing buildings.
Annual percentage change	Annual percentage change is the change in the value of building plans passed or buildings completed for a certain year compared with the value of building plans passed and buildings completed in a previous year expressed as a percentage.
Blocks of flats	High-density housing consisting of a number of self-contained dwelling-units with at least one living-room together with a kitchen and bathroom conjoined to similar units in one building.
Dwelling-house	A free-standing, complete structure on a separate stand or a self-contained dwelling-unit, e.g. granny flat, on the same premises as an existing residence. Out-buildings and garages are included.
District municipality	A municipality that has municipal executive and legislative authority in an area that includes more than one municipality, and which is described in Section 155(1) of the Constitution as a category C municipality (refer to Local Government: Municipal Structure Act, 1998 (Act No. 117 of 1998)).
District Management Area	<p>District municipalities are not in general responsible for passing of building plans or issuing of final occupation certificates. These functions are primarily the responsibility of the metropolitan municipalities and the local municipalities. However, district municipalities will execute these functions in the following cases:</p> <ul style="list-style-type: none">• For rural areas that do not fall under the jurisdiction of either a metropolitan or local municipality. These areas are referred to as District Management Areas (DMA), and are managed directly by district municipalities.• Where local municipalities have requested the district municipality to perform this function. In such cases an agreement known as a service level agreement is reached between the local municipality and the district municipality. The local municipality will pay a fee to the district municipality for the service rendered.
Local municipality	A municipality that shares municipal executive and legislative authority in its area with a district municipality within whose area it falls, and which is described in section 155(1) of the Constitution as a category B municipality (refer to Local Government: Municipal Structure Act, 1998 (Act No. 117 of 1998)).
Metropolitan municipality	A municipality that has municipal executive and legislative authority in an area that includes more than one municipality, and which is described in section 155(1) of the Constitution as a category A municipality (refer to Local Government: Municipal Structure Act, 1998 (Act No. 117 of 1998)).
Municipality	A generic term describing the unit of government in the third sphere responsible for local government in a geographically demarcated area. It includes district, metropolitan and local municipalities.

Non-residential buildings	Factories and commercial, financial and other office buildings, as well as other buildings used for non-residential purposes, such as churches, halls, clubs, schools and hospitals.
Other residential buildings	Institutions for the disabled, boarding houses, hostels and tourism accommodation e.g. hotels, motels, guest-houses, holiday chalets, bed-and-breakfast accommodation and casinos.
Reference period	Reference period is a calendar year.
Residential buildings	Dwelling-houses, flats, townhouses and other residential buildings.
Townhouses	Multiple, medium-density dwelling-units including cluster housing, group housing, simplexes, duplexes, triplexes and other similar dwelling-units which are usually grouped together, with one level of each unit on ground level. This category excludes blocks of flats.