

Published by Statistics South Africa, Private Bag X44, Pretoria 0001

© Statistics South Africa, 2003

This publication, including the data on which it is based, is subject to copyright. Apart from uses permitted under the Copyright Act of 1978, no part of it may be reproduced or copied in any format or by any process, and no copy or reproduction may be sold, without prior permission or licence from Statistics South Africa.

Stats SA Library Cataloguing-in-Publication (CIP) Data

Documented migration, 2002 / Statistics South Africa. Pretoria : Statistics South Africa, 2003

xiv, 70 p. (Report No. 03-51-03 (2002))

Title continues in English only

ISBN 0-621-34306-4

I. Emigration and immigration

I. South African Statistics

II. Series

(LCSH 16)

A complete set of Stats SA publications is available at Stats SA Library and the following libraries:

National Library of South Africa, Pretoria Division

National Library of South Africa, Cape Town Division

Library of Parliament, Cape Town

Bloemfontein Public Library

Natal Society Library, Pietermaritzburg

Johannesburg Public Library

Eastern Cape Library Services, King William's Town

Central Regional Library, Polokwane

Central Reference Library, Nelspruit

Central Reference Collection, Kimberley

Central Reference Library, Mmabatho

This publication is available on Stats SA website: [www.statssa.gov.za](http://www.statssa.gov.za)

Copies obtainable from: Publications, Statistics South Africa

Tel: (012) 310 8251

(012) 310 8161

Fax: (012) 321 7381

(012) 310 8619

E-mail: [publications@statssa.pwv.gov.za](mailto:publications@statssa.pwv.gov.za)

**PREFACE**

This report contains migration statistics (documented immigration and self-declared emigration) for South Africa (SA).

The information in this report was obtained from the following source documents of the Department of Home Affairs (DHA):

- Form BI-55 filled in by immigrants on their arrival in SA and Form BI-117 filled in by emigrants on their departure from either Johannesburg, Cape Town or Durban International Airports;
- Forms BI-807 and BI-834 concerning persons, who, after their arrival as visitors, were approved as immigrants by the DHA.

The report shows the number of documented immigrants and self-declared emigrants and the net gain/loss to the population of SA. It also contains some information on migrants, such as age, occupation and mode of travel. For documented immigrants, there is additional

information on country of previous permanent residence, country of birth, country of citizenship and for self-declared emigrants, there is additional information on destination country.

Migration statistics are also published in the quarterly *Bulletin of Statistics* and in the monthly Statistical Release P0351: *Tourism and Migration*.



**STATISTICIAN-GENERAL: STATISTICS SOUTH AFRICA**

**PRETORIA  
2003**

Table	TABLE OF CONTENTS	Page
	Summary	iv
	Graphs	vi
	Comparative assessment of data on self-declared emigration, 2001 update	x
	Explanatory notes	xiii
1.	<b>HISTORICAL TABLE</b>	
	<b>MIGRATION</b>	1
1.1.1	Total – 1945 to 2002	1
1.1.2	Occupation – 2000 to 2002	3
2.	<b>DOCUMENTED IMMIGRANTS</b>	
2.1	Single ages by gender	8
2.2	Occupation by gender and age	10
2.3	Country of previous permanent residence by occupation	18
2.4	Country of previous permanent residence, birth and citizenship by gender	23
2.5	Country of previous permanent residence by month of arrival or approval	27
2.5.1	Total	27
2.5.2	Approved before arrival	32
2.5.3	Approved after arrival	36
2.6	Mode of travel and place of entry	41
2.6.1	Approved before arrival	41
3.	<b>SELF-DECLARED EMIGRANTS</b>	
3.1	Single ages and gender	42
3.2	Occupation by gender and age	44
3.3	Country of destination by occupation	54
3.4	Country of destination, citizenship by gender	58
3.5	Country of destination by month of departure	62
3.6	Country of destination by gender	66
3.6.1	SA citizens	66
	Other Stats SA reports	69

## SUMMARY

### Introduction

This report presents data on declared permanent immigration to, and permanent emigration from, South Africa (SA) during 2002. While there are several sources of emigration statistics, at present Statistics South Africa obtains its emigration statistics from the departure forms filled in by South African residents, upon departure from either of the three international airports of Johannesburg, Durban and Cape Town. By law it is compulsory for South African citizens to fill in these forms. However, for various logistical reasons, it is not always feasible to accurately verify the contents of the details filled in. In other words, an intending emigrant may not always fill in the form, and even if the intending emigrant does complete it, he/she may state that the purpose of visit is 'holiday' or 'business'. The emigration statistics reported here, therefore, refer to 'self-declared emigration', which is different from actual emigration. A comparative assessment of the data on self-declared emigration is given in the section following the summary. The possibility of obtaining and analysing different sources of migration data is being explored. Readers will be informed of any progress in this regard.

### Historical trend in documented immigration and self-declared emigration

#### Trend in documented immigration to SA

There have been wide fluctuations in the trends of documented immigration to SA. Figure 1 shows that there were two prominent peaks. One peak occurred in 1975 and the other in 1982. The 1975 peak was largely due to the doubling in the number of immigrants from the UK between 1973 and 1975 and to some extent, immigration into SA from Mozambique, after the country gained independence in that year. The 1982 peak was largely due to immigration to SA from the UK, China and Portugal. From 1990 onwards, there was a downward trend in the number of documented immigrants to SA. In 2002 the number of documented immigrants to SA was 6 545, an increase of 35,5% as compared to the 2001 figure of 4 835.

#### Trend in self-declared emigration from SA

The emigration data from 1970 to present show three major peaks. These peaks occurred in 1977, 1986 and 1994. During those peak years, the leading destination country for self-declared emigrants was the UK. In the post-1994 period, the trend in self-declared emigration from SA to other countries has been gradual. In 2002 the number of self-declared emigrants turned out to be 11,2% lower than that of 2001. The number of self-declared emigrants decreased from 12 260 in 2001 to 10 890 in 2002.

### Documented immigration and self-declared emigration by country of origin and destination, respectively

As stated earlier, the total number of self-declared emigrants from SA during 2002 was 10 890. Of these, 8 900 (81,7%) were South African citizens. The rest were permanent residents who were either returning to their countries of origin, or emigrating to other countries after having settled in SA for a while.

Figure 2 shows the distribution of the leading source countries (of previous permanent residence) of documented immigrants and leading destination countries of self-declared emigrants. During 2002 the UK was the leading source country of documented immigrants as well as the leading destination country of self-declared emigrants. A total of 3 626 self-declared emigrants (33,3%) went to settle in the UK and a total of 668 documented immigrants (10,2%) came to settle in SA from the UK. Other leading destination countries were: Australia, 1 580 (14,5%); the USA, 1 091 (10,0%); New Zealand, 939 (8,6%); Namibia, 448 (4,1%) and Canada, 339 (3,1%). Other leading source countries of documented immigrants were: India, 608 (9,3%); Germany, 286 (4,4%); Zimbabwe, 464 (7,1%); China, 361 (5,5%); Nigeria, 631 (9,6%) and Pakistan, 345 (5,3%).

### Documented immigrants by country of previous permanent residence, country of birth and country of citizenship

For a person who has been granted permanent residence status in SA, details are collected about the person's country of birth, the country of citizenship and the country of previous permanent residence. If for any given country, more immigrants report that country as their country of birth than their country of citizenship, this may reflect the emigration of second generation immigrants of that country. If for another given country, more immigrants report that given country as their country of previous permanent residence than their country of birth, this may reflect a step-wise migration process for short-term immigrants of that country. In effect, this refers to persons who emigrate from their home countries to another country where they stay for a while until they obtain permanent residence in that country and subsequently emigrate from there. Lastly, if for yet another given country, more immigrants report that country as their country of citizenship than their country of birth, this may reflect a step-wise migration process for long-term immigrants of that country. This refers to persons who emigrate from their home countries to another country where they stay till they obtain citizenship and then emigrate further from there.

During 2002 a total of 6 545 persons were granted permanent residence in SA. Of these, 1 604 (24,5%) were granted residence before arrival and 4 941 (75,5%) after arrival. Of the

total number granted permanent residence, 4 058 (62,0%) were permanent residents of an overseas country and 2 472 (37,8%) were permanent residents of a mainland African country. Of the immigrants from overseas, the number reporting such a country as their country of birth (4 058) is exactly the same as those reporting such a country as their country of previous permanent residence (4 058). Of the immigrants from mainland Africa, the number reporting a mainland Africa as the country of birth (2 487) is about the same as those reporting such a country as the previous permanent residence (2 472).

Slightly more immigrants reported an overseas country of citizenship (4 117) than their country of birth (4 058). This means that immigration to SA from overseas comprises not only of born-citizens of overseas countries but also of naturalised citizens of those countries. On the contrary, slightly more immigrants reported a mainland African country as their country of birth (2 487) than their country of citizenship (2 428). This means that immigration to SA includes not only citizens of those countries but also second-generation immigrants into those countries.

### **Selected characteristics of documented immigrants and self-declared emigrants**

Age and occupation are two important characteristics of documented immigrants and self-declared emigrants. These two important characteristics have an impact on the labour force and its composition.

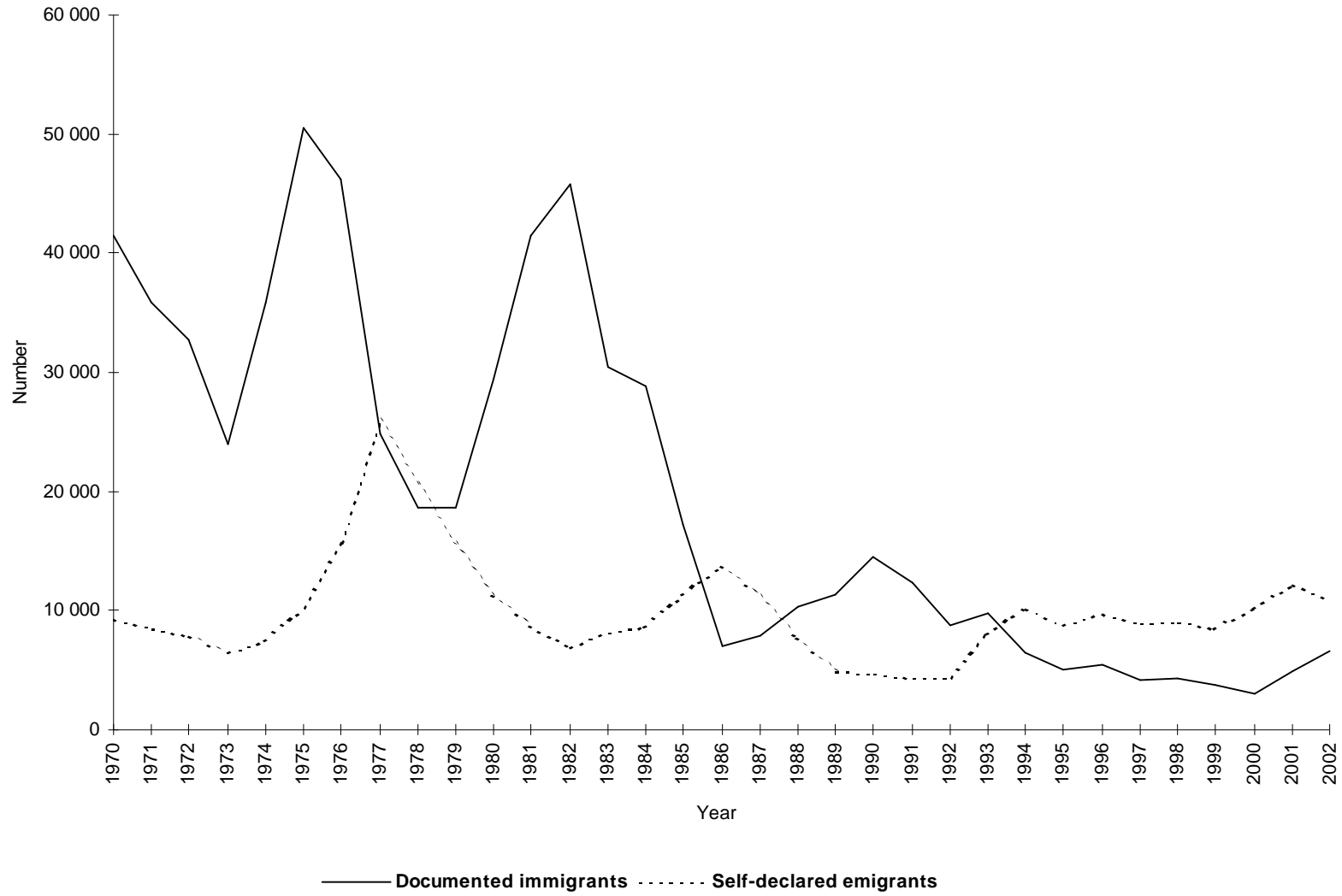
### *Age profile of documented immigrants and self-declared emigrants*

The percentage distribution of both documented immigrants and self-declared emigrants by age group in 2002 is shown in Figure 3. Both age profiles show a major peak as in standard age profiles of migration. For self-declared emigrants, the peak is broad and occurs over the age range 25-34. For documented immigrants, the peak occurs over the age group 30-34. For documented immigrants a minor peak occurs at the age group 5-9, reflecting the phenomenon of young dependant children accompanying their migrating parents. For ages below five and ages 40 and over, there is relatively higher proportion of self-declared emigrants than documented immigrants, while for ages between 20 and 40 there is relatively higher proportion of documented immigrants than self-declared emigrants.

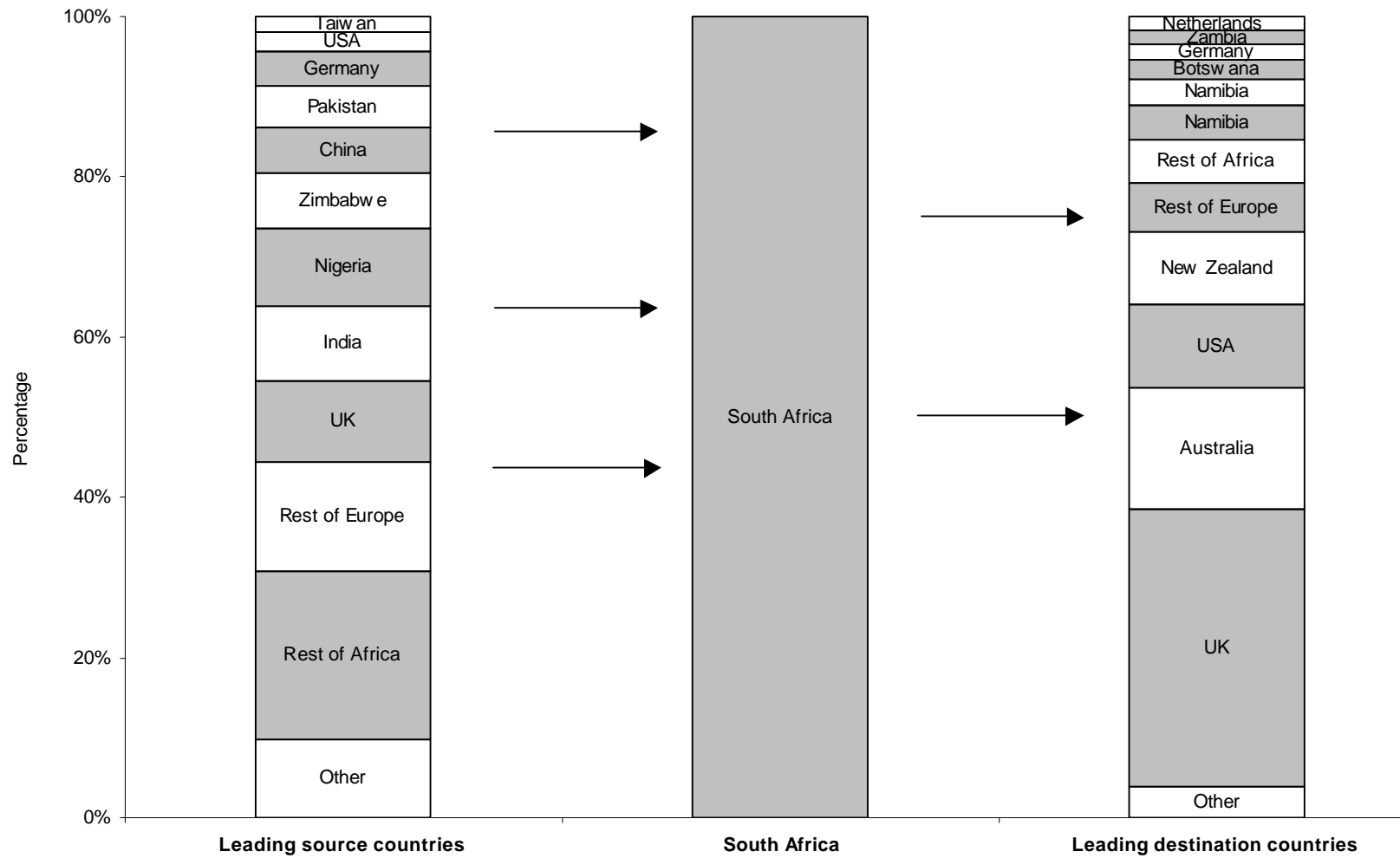
### *Occupation background of documented immigrants and self-declared emigrants*

During 2002, out of the 6 545 persons granted permanent immigration status, 1 054 (16,1%) were economically active, while 5 491 (83,9%) were not economically active. For self-declared emigrants, out of a total of 10 890, 7 334 (67,4%) were economically active, while 3 556 (32,7%) were not economically active. Of the economically active documented immigrants, 576 (8,8%) were in the professional category, followed by 382 (5,8%) in the managerial category. On the other hand, 2 689 (24,7%) of the economically active self-declared emigrants were in the professional category, followed by 1 119 (10,3%) in the clerical and sales category. Figure 4 shows this occupational breakdown among both the documented immigrants and the self-declared emigrants.

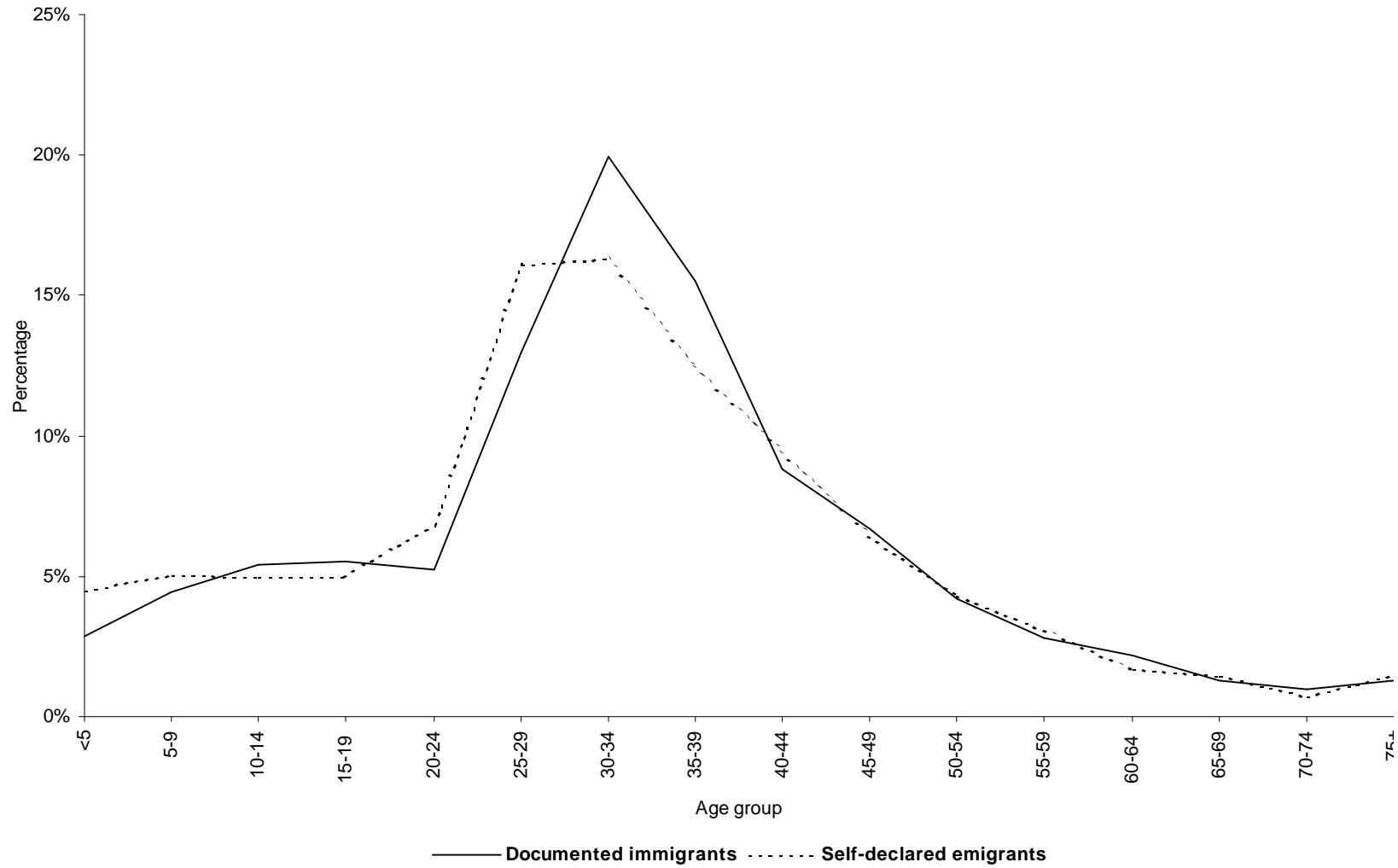
**Fig. 1: Documented immigrants and self-declared emigrants, 1970-2002**



**Fig. 2: Leading countries of documented immigration to South Africa and leading countries of self-declared emigration from South Africa, 2002**

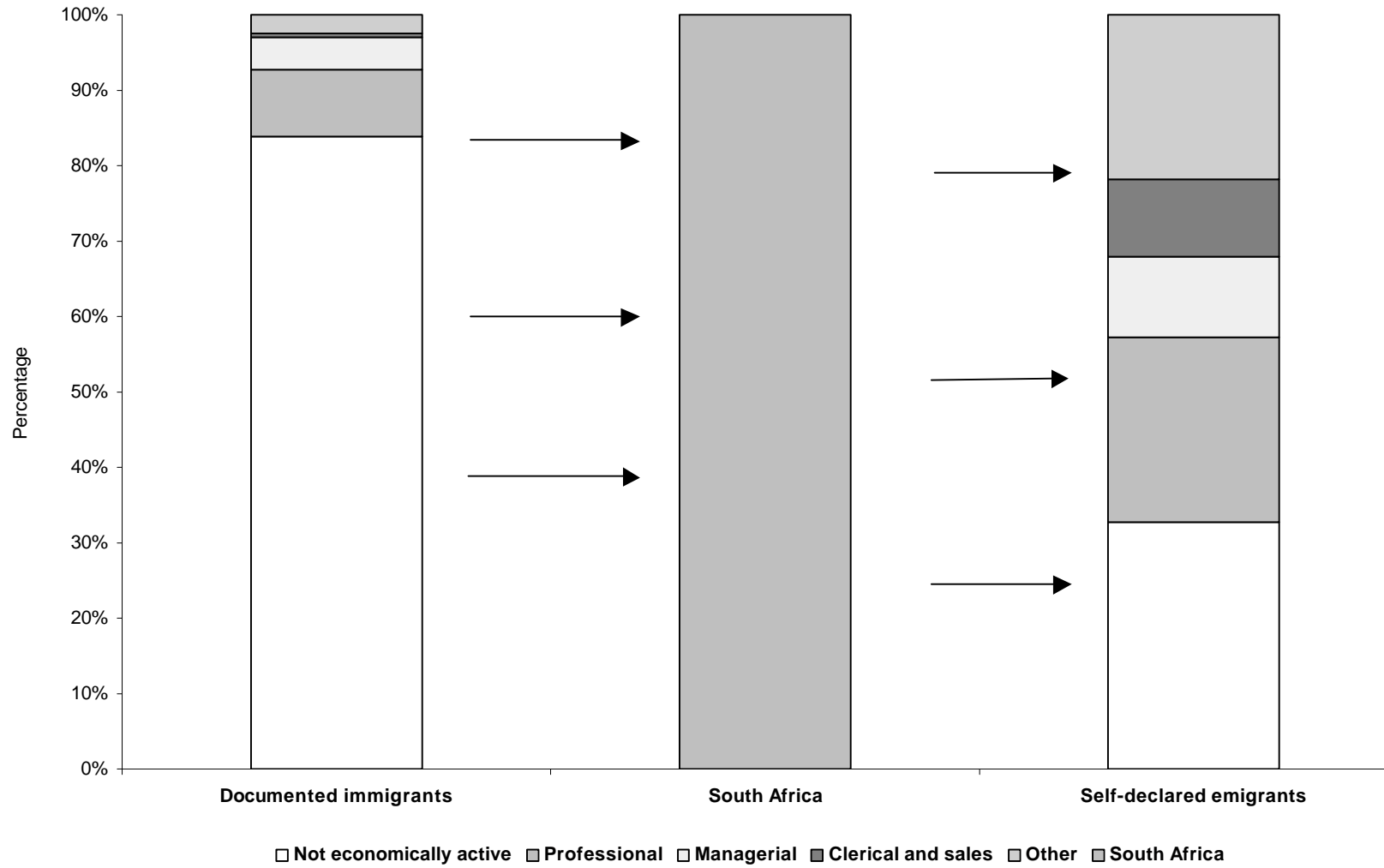


**Fig. 3: Percentage distribution of documented immigrants and self-declared emigrants by age group, 2002**





**Fig. 4: Percentage distribution of documented immigrants to South Africa and self-declared emigrants from South Africa by occupational category, 2002**



## COMPARATIVE ASSESSMENT OF DATA ON SELF-DECLARED EMIGRATION, 2002 UPDATE

### Introduction

Over the years official statistics on self-declared emigration from SA show that the five leading overseas destination countries are the UK, USA, Canada, Australia and New Zealand. As these countries have good statistical systems, in principle, it would be possible to obtain data on South African residents and/or South African citizens who have permanently settled in these countries. The figures obtained from those sources could be compared with official figures on self-declared emigration and the degree of under-reporting of emigration could be assessed.

### Methods used

In the situation where there is a lot of missing data, the comparison of emigration data from a sending country with the immigration data in the receiving country is not a straightforward exercise. Handling of missing data involves having a critical look at the data and making discretionary judgements in the appropriate method to apply. While limited data are available on both flow and stock statistics in the receiving countries, this section only reports on the stock data (actual and estimated) in the receiving countries and how they have been used in the comparative assessment.

In a situation where there are three or more data points, a simple regression equation is fitted on these points. The equation is used to estimate the South African resident population at different dates. In the case of Canada, data are available at three census dates, while in the case of Australia, the Australian Bureau of Statistics (ABS) estimates of the resident population are available at eight dates. For the dates for which data are available, the regression estimates were replaced by the available data (written in bold in Table D).

In the case where there are two data points, simple linear interpolation was used to obtain the datum for each year of the intervening period. This was the case with New Zealand and Great Britain.

### Data collated from responses received

Some of the data received from the different statistical and migration organisations have been summarised in Tables A, B and C. The data pertain to the five leading overseas destination countries mentioned earlier.

*Table A: Stock statistics on South African citizens/residents abroad, selected countries*

Country	Census/survey date	Number of SA residents/citizens	Source
Canada	1986	18 785	Statistics Canada
Canada	1991	24 730	Statistics Canada
Canada	1996	28 465	Statistics Canada
Canada	2001	18 925	Statistics Canada
New Zealand	1991	5 655	Statistics New Zealand
New Zealand	1996	11 334	Statistics New Zealand
New Zealand	2001	14 913	Statistics New Zealand
Great Britain	1991	68 059	Census, Office of National Statistics (ONS)
Great Britain	2001	140 236	Census, ONS

*Table B: Estimated resident population of South African citizens/residents abroad, selected countries, various years*

Year	Australia <sup>1</sup> Number	USA <sup>2</sup> Number	Great Britain <sup>3</sup> Number
1992	56 500	..	..
1993	57 100	..	..
1994	58 600	..	..
1995	60 900	..	..
1996	64 100	..	..
1997	..	52 000	92 000
1998	68 406	..	..
1999	..	..	117 000
2000	..	69 000	..
2001	79 425	..	140 236

<sup>1</sup> Sources: For the period 1992-1996, the source is 'Migration: Australia, 1995-96', ABS (Catalogue No. 3412.0) while for the 1998 data, the source is 'Australian Demographic Statistics' (publication 310.0).

<sup>2</sup> Source: March 1997 Current Population Survey, US Census Bureau. The figure is a point estimate with a 90% confidence interval ranging from 14 000 to 90 000.

<sup>3</sup> Labour Force Survey, ONS.

**Table C: Updated flow statistics on South African citizens/residents granted permanent residence abroad, selected countries**

Year	New Zealand <sup>1</sup>	Year	Canada <sup>2</sup>
1997/98	3557	1997	2054
1998/99	3419	1998	1635
1999/00	3654	1999	1697
2000/01	4140	2000	1356 (as at 16 Sept 2000)

### Findings

In Table D the flow statistics from SA were cumulated to make them comparable to the stock statistics from the receiving countries. What the table shows is that for the USA, Australia and New Zealand, the estimated number of resident immigrants from SA far exceed the Stats SA estimate of total emigrants to those countries. The Table shows that the difference by 1995 was little over 40 000 for the USA and close to 22 000 for Australia by 1998. The official statistics on emigration from SA to the five leading destination countries comes to 205 022 over the period 1970-2001. However, from the perspective of the receiving countries, the total number of South African citizens/residents who have immigrated to those countries was 322 499 by 2001. This makes the Statistics South Africa figures to be a 57,3% under-estimate of the independently estimated figures. The total emigration to all countries during the period 1970-2001, Statistics South Africa figures give a total of 275 019. If the under-estimate is applied to this figure, then one would estimate that a total of 392 496 South African citizens/residents left the country between 1970 and 2001. This is an estimate and would be further refined as more data becomes available.

It must be noted that the sources of data in the receiving countries are not all 100% accurate. Most weight should be given to the census data in those countries. The census data would capture all those emigrants from SA who had not yet been granted immigration status. The census data will also take account of mortality. There is, however, the slight danger that in the event of step-wise migration, meaning that the emigrant from SA had emigrated to that country from a country other than SA then the flow and stock data will not be strictly comparable. Lastly, it must be noted that most emigration are event-triggered and do not necessary rise or fall in a smooth manner.

<sup>1</sup> Source: Statistics New Zealand, Immigration Office, New Zealand.

<sup>2</sup> Source: Statistics Canada, Citizenship and Immigration, Canada.

### Way forward

The communications that have been established with overseas statistical organisations should be maintained. The calculations presented here should be updated, as more stock and flow data on emigration/immigration become available. Attempts must be made to obtain data on other independent sources of emigration data. These would complement the data on self-declared emigration and give a more complete picture of emigration from SA.

Table D: Comparison of stock statistics: Stats SA self-declared emigration statistics and documented immigration statistics in receiving countries (South African citizens and residents)

Year	USA			Australia			New Zealand			Canada			UK		
	Stats SA emigration statistics (cumulative)	Immigrants from SA		Stats SA emigration statistics (cumulative)	Immigrants from SA		Stats SA emigration statistics (cumulative)	Immigrants from SA		Stats SA emigration statistics (cumulative)	Immigrants from SA		Stats SA emigration statistics (cumulative)	Immigrants from SA	
		Estimate (actual data in bold)	Difference		Estimate (actual data in bold)	Difference		Estimate (actual data in bold)	Difference		Estimate (actual data in bold)	Difference		Estimate (actual data in bold)	Difference
1971	269	..	..	2 264	..	..	237	..	..	209	..	..	2 077	..	..
1972	308	..	..	3 066	..	..	459	..	..	259	..	..	4 287	..	..
1973	419	..	..	3 582	..	..	646	..	..	382	..	..	6 504	..	..
1974	622	..	..	4 367	..	..	861	..	..	700	..	..	8 915	..	..
1975	873	..	..	4 920	..	..	1 032	..	..	1 285	..	..	12 458	..	..
1976	1 438	..	..	5 556	..	..	1 235	..	..	1 946	..	..	18 544	..	..
1977	2 760	..	..	7 818	..	..	1 651	..	..	3 197	..	..	28 328	..	..
1978	3 859	..	..	10 128	..	..	1 990	..	..	4 242	..	..	37 671	..	..
1979	4 711	..	..	12 437	..	..	2 163	..	..	4 991	..	..	44 568	..	..
1980	5 336	..	..	14 980	..	..	2 305	..	..	5 837	..	..	48 894	..	..
1981	5 764	..	..	17 279	..	..	2 383	..	..	6 731	..	..	51 006	..	..
1982	6 112	..	..	19 037	..	..	2 476	..	..	7 163	..	..	52 971	..	..
1983	6 511	..	..	20 984	..	..	2 579	..	..	7 395	..	..	56 786	..	..
1984	6 989	..	..	22 488	..	..	2 649	..	..	7 562	..	..	61 246	..	..
1985	7 578	..	..	24 291	..	..	2 774	..	..	7 782	..	..	67 221	..	..
1986	8 180	..	..	28 269	..	..	3 093	..	..	8 223	<b>18 785</b>	-10 562	72 628	..	..
1987	8 723	..	..	31 753	..	..	3 504	..	..	8 978	20 121	-11 143	76 445	..	..
1988	9 048	..	..	34 341	..	..	3 680	..	..	9 700	21 089	-11 389	78 740	..	..
1989	9 260	..	..	35 616	..	..	3 763	..	..	10 154	22 057	-11 903	80 160	..	..
1990	9 538	..	..	36 908	<b>53 500</b>	-16 592	3 827	..	..	10 503	23 025	-12 522	81 964	..	..
1991	9 845	..	..	37 836	<b>55 800</b>	-17 964	3 877	<b>5 655</b>	-1 778	10 769	<b>24 730</b>	-13 961	83 764	<b>68 059</b>	15 705
1992	10 159	..	..	38 530	<b>56 500</b>	-17 970	4 003	6 791	-2 788	11 054	24 961	-13 907	85 751	72 049	13 702
1993	10 330	..	..	38 727	<b>57 100</b>	-18 373	4 179	7 927	-3 748	11 167	25 929	-14 762	86 375	76 039	10 336
1994	11 082	..	..	40 025	<b>58 600</b>	-18 575	5 644	9 062	-3 418	12 114	26 897	-14 783	89 255	80 030	9 225
1995	11 964	<b>52 000</b>	-40 036	41 532	<b>60 900</b>	-19 368	6 583	10 198	-3 615	12 793	27 865	-15 072	91 300	84 020	7 280
1996	12 927	..	..	43 299	<b>64 100</b>	-20 801	7 849	<b>11 334</b>	-3 485	13 567	<b>28 465</b>	-14 898	93 543	88 010	5 533
1997	13 759	..	..	44 807	66 253	-21 446	9 006	14 891	-5 885	14 124	30 519	-16 395	95 705	<b>92 000</b>	3 705
1998	14 648	..	..	46 438	<b>68 406</b>	-21 968	9 875	14 753	-4 878	14 573	32 154	-17 581	98 015	..	..
1999	15 475	..	..	47 982	..	..	10 836	14 988	-4 152	14 914	33 851	-18 937	100 331	..	..
2000	16 574	..	..	49 526	..	..	11 730	15 474	-3 744	15 396	35 762	-20 366	103 183	..	..
2001	17 755	..	..	51 346	..	..	12 821	..	..	15 874	..	..	107 226	..	..
2002	18 846	..	..	52 926	..	..	13 760	..	..	16 213	..	..	110 852	..	..

xiii  
**EXPLANATORY NOTES**

## **1. Background**

### 1.1 Data collection instruments

Legal movements across South African borders as well as legal immigration into South Africa (SA) fall under the jurisdiction of the Department of Home Affairs (DHA). At present, data on migration are obtained from the departure forms and the administrative records relating to the granting of permanent residence in SA. For South African residents, data on temporary departures are obtained from scanning of the bar codes in the passport (upon departure and upon return) and the departure forms. The filling-in of departure forms used to be done at all ports of entry but from 26 November 1993, this system is only implemented at the three international airports of Johannesburg, Cape Town and Durban. For South African residents emigrating from SA, the information is obtained from the same departure form when the resident states that he/she is emigrating. Lastly, administrative records are kept for all non-South African residents who have been granted permanent residence status (either before arrival or after arrival).

### 1.2 Compilation of migration statistics

For South African residents, the same departure forms (filled in at the three international airports) are used to obtain information on emigration from SA. When the data are captured at Statistics South Africa, self-declared emigrants are separated from temporary departures. For the moment, the departure forms they fill in provide the only source of information for purpose of visit and country of destination. The forms are sent to Statistics South Africa on a weekly basis for data capture and processing. It must be noted that the filling-in of the departure forms is not strictly enforced, hence the statistics on the actual number of South African residents who depart temporarily, is obtained from the data based on the scanning of the bar codes in the passports.

For non-South African residents, information on legal immigration into SA is compiled by DHA from administrative records and captured on the computer. A printout of this data is sent to Statistics South Africa where the information is coded and captured by clerical staff.

## **2. Assessment of statistics on self-declared emigration**

### 2.1 Overview

In comparing the data from the sending country (SA) and the receiving countries, one encounters the classic problem of flow versus stock data. The sending country only has (incomplete) flow data (persons leaving during the year) while the receiving country may (in principle) have both flow and stock data. Strictly, it is best to compare flow data of one country

with flow data of the other country. In a few cases it is possible to obtain flow data from stock data (as in the case when questions on migration history are asked in a census or survey).

With regards to stock data, the closest comparison that can be made is between the census data in the receiving country and the cumulative flow data from the sending country. If both sets of statistics are complete then the cumulative flow data up to a certain (census) data should be greater than the figures obtained from the census data. The reason for this is that the census data in the receiving country pertain to survivors of the original number of immigrants coming from the sending country.

### 2.2 External sources of data

#### 2.2.1 Great Britain (England, Wales and Scotland)/UK

The Office of National Statistics (ONS) conducts census and surveys. The latest census was conducted in 2001 and covered Great Britain. The census has information on country of birth of respondents and hence can give stock information on South African born persons living in GB. The ONS also conducts the Labour Force Survey in which questions are asked about date of arrival to the UK. That breakdown could yield flow statistics. Another section of ONS compiles international migration data from the International Passenger Survey (IPS). The IPS is a continuous voluntary survey, which has been running from 1964. The survey collects data on those passengers (through all air and sea routes) who have lived abroad for at least 12 months and intend to reside in the UK for at least 12 months. As the IPS is a survey, it produces estimates of immigrants, not exact counts. In this section only the census data and the data from the Labour Force Survey have been used.

#### 2.2.2 The USA

In the USA, there is the Immigration and Naturalization Service (INS) at the US Department of Justice. The INS publishes a yearbook in which flow statistics are provided on immigrants to the USA and their countries of birth. The INS also publishes an annual report on legal immigration to the USA. The US Census Bureau is the main source of stock statistics on foreign-born population data. They compile their data from the decennial censuses and the Current Population Survey (CPS). Using these data, they do population projections to estimate the number of foreign-born residents in the USA.

### 2.2.3 New Zealand

In New Zealand, Statistics New Zealand is the main source of both stock and flow statistics that yield migration statistics. Statistics New Zealand conducts a census after every five years from which they provide stock statistics on foreign residents and their countries of birth. The last two censuses were held in 1996 and 2001. Statistics New Zealand also publishes monthly and yearly flow statistics on 'permanent and long term arrivals'. The 2001 census figures were updated with the latest available flow statistics to yield post-1996 estimates.

### 2.2.4 Australia

In Australia, the Australian Bureau of Statistics (ABS) is the main source of both stock and flow statistics that yield migration statistics. The ABS conducts a census after every five years from which they provide stock statistics on foreign residents and their countries of birth. The last two censuses were held in 1996 and 2001. The ABS also publishes monthly and yearly flow statistics on 'settler arrivals' and publishes estimates of the resident population by country of birth. The immigration and emigration statistics published by the ABS are obtained from data collected by the statistics section of the Department of Immigration and Multicultural Affairs (DIMA). The data are based on information from completed arrival and departure passenger cards and supplemented from passport and visa information. In this comparative assessment, the ABS estimates of the resident population (available at eight dates) were used.

### 2.2.5 Canada

In Canada, Statistics Canada conducts a census after every five years from which they provide stock statistics on foreign-born population resident in Canada. In the comparative assessment, the census data (available at three dates) were used. In addition, flow statistics on South African citizens granted permanent residence in Canada are published annually by the Department of Citizenship and Immigration Canada. The 2001 census figures were updated with the latest available flow statistics to yield post-1996 estimates.

## 3. Definitions

3.1 **Documented immigrants** refer to residents of other countries who have been accepted as permanent residents in South Africa. The permanent residence status could be given either before or after arrival in South Africa.

3.2 **Self-declared emigrants** refer to South African residents who, at the time of departing from South Africa, state their intention to leave the country and reside permanently elsewhere.

## 4. Classifications used

4.1 For occupations, the occupational classification used is based on the Standard Classification of Occupations, Report No. 09-90-01, First Edition, 1986.

4.2 Geographical classification of countries was based on the list used by DHA.

## 5. Abbreviations and symbols

T	= Total
M	= Male
F	= Female
..	= Data not available
-	= Nil or not applicable (when standing alone)
-	= Less than ' (when standing in front of a number). For example -20 means less than 20
+	= More than y (when standing in front of a number). For example +20 means more than 20
Nec	= Not elsewhere classified
Prof.	= Professional
?	= Unspecified
Dem	= Democratic
Is	= Island
Rep	= Republic
Ter	= Territories
UK	= United Kingdom
USA	= United States of America

1. HISTORICAL TABLE  
 1.1 MIGRATION - DOCUMENTED IMMIGRATION AND SELF-DECLARED EMIGRATION  
 1.1.1 TOTAL - 1945 to 2002

YEAR	DOCUMENTED IMMIGRANTS			SELF-DECLARED EMIGRANTS			NET GAIN/LOSS		
	TOTAL	MALE	FEMALE	TOTAL	MALE	FEMALE	TOTAL	MALE	FEMALE
1945	2 949	1 309	1 640	4 881	2 055	2 826	-1 932	-746	-1 186
1946	12 030	5 647	6 383	9 095	4 200	4 895	2 935	1 447	1 488
1947	29 827	17 017	12 810	8 040	4 183	3 857	21 787	12 834	8 953
1948	36 734	18 554	18 180	7 623	4 066	3 557	29 111	14 488	14 623
1949	15 576	7 695	7 881	9 403	5 166	4 237	6 173	2 529	3 644
1950	13 663	6 594	7 069	14 956	8 219	6 737	-1 293	-1 625	332
1951	15 890	8 017	7 873	15 546	8 478	7 068	344	-461	805
1952	18 975	9 851	9 124	9 877	5 228	4 649	9 098	4 623	4 475
1953	17 267	8 816	8 451	10 324	5 345	4 979	6 943	3 471	3 472
1954	16 719	9 106	7 613	11 461	6 058	5 403	5 258	3 048	2 210
1955	16 684	8 979	7 705	12 636	6 527	6 109	4 048	2 452	1 596
1956	15 238	8 305	6 933	13 031	6 680	6 351	2 207	1 625	582
1957	14 631	7 701	6 930	11 034	5 503	5 531	3 597	2 198	1 399
1958	14 701	7 688	7 013	8 954	4 427	4 527	5 747	3 261	2 486
1959	12 598	6 358	6 240	9 502	4 732	4 770	3 096	1 626	1 470
1960	9 805	5 193	4 612	12 705	6 452	6 253	-2 900	-1 259	-1 641
1961	16 373	9 168	7 205	15 046	7 769	7 277	1 327	1 399	-72
1962	20 972	11 312	9 660	9 162	4 547	4 615	11 810	6 765	5 045
1963	38 013	20 513	17 500	7 272	3 570	3 702	30 741	16 943	13 798
1964	40 896	22 447	18 449	8 293	4 125	4 168	32 603	18 322	14 281
1965	38 337	21 082	17 255	9 479	4 770	4 709	28 858	16 312	12 546
1966	48 051	26 317	21 734	10 289	5 404	4 885	37 762	20 913	16 849
1967	38 937	20 756	18 181	11 289	5 954	5 335	27 648	14 802	12 846
1968	40 548	21 677	18 871	10 945	5 744	5 201	29 603	15 933	13 670
1969	41 446	22 233	19 213	9 313	4 915	4 398	32 133	17 318	14 815
1970	41 523	21 804	19 719	9 278	4 718	4 560	32 245	17 086	15 159
1971	35 845	19 104	16 741	8 407	4 376	4 031	27 438	14 728	12 710
1972	32 776	17 038	15 738	7 884	4 058	3 826	24 892	12 980	11 912
1973	24 016	12 507	11 509	6 401	3 271	3 130	17 615	9 236	8 379
1974	35 910	18 644	17 266	7 428	3 804	3 624	28 482	14 840	13 642

1. HISTORICAL TABLE  
 1.1 MIGRATION - DOCUMENTED IMMIGRATION AND SELF-DECLARED EMIGRATION  
 1.1.1 TOTAL- 1945 to 2002 (CONCLUDED)

YEAR	DOCUMENTED IMMIGRANTS			SELF-DECLARED EMIGRANTS			NET GAIN/LOSS		
	TOTAL	MALE	FEMALE	TOTAL	MALE	FEMALE	TOAL	MALE	FEMALE
1975	50 464	26 827	23 637	10 255	5 227	5 028	40 209	21 600	18 609
1976	46 239	23 647	22 592	15 641	7 951	7 690	30 598	15 696	14 902
1977	24 822	12 437	12 385	26 000	13 459	12 541	-1 178	-1 022	-156
1978	18 669	9 334	9 335	20 686	10 680	10 006	-2 017	-1 346	-671
1979	18 680	9 274	9 406	15 694	8 010	7 684	2 986	1 264	1 722
1980	29 365	14 987	14 378	11 363	5 594	5 769	18 002	9 393	8 609
1981	41 542	21 937	19 605	8 791	4 462	4 329	32 751	17 475	15 276
1982	45 784	23 640	22 144	6 832	3 369	3 463	38 952	20 271	18 681
1983	30 483	15 721	14 762	8 247	4 108	4 139	22 236	11613	10 623
1984	28 793	14 833	13 960	8 550	4 238	4 312	20 243	10 595	9 648
1985	17 284	8 713	8 571	11 401	5 766	5 635	5 883	2 947	2 936
1986	6 994	3 418	3 576	13 711	6 796	6 915	-6 717	-3 378	-3 339
1987	7 953	4 042	3 911	11 174	5 443	5 731	-3 221	-1 401	-1 820
1988	10 400	5 287	5 113	7 767	3 772	3 995	2 633	1 515	1 118
1989	11 270	5 928	5 342	4 911	2 374	2 537	6 359	3 554	2 805
1990	14 499	7 806	6 693	4 722	2 331	2 391	9 777	5 475	4 302
1991	12 379	6 607	5 772	4 256	2 060	2 196	8 123	4 547	3 576
1992	8 686	4 544	4 142	4 289	2 063	2 226	4 397	2 481	1 916
1993	9 824	5 126	4 698	8 078	..	..	1 746	..	..
1994	6 398	3 175	3 223	10 235	4 877	5 358	-3 837	-1 702	-2 135
1995	5 064	2 314	2 750	8 725	4 194	4 531	-3 661	-1 880	-1 781
1996	5 407	2 606	2 801	9 708	4 656	5 052	-4 301	-2 050	-2 251
1997	4 103	2 053	2 050	8 946	4 340	4 606	-4 843	-2 287	-2 256
1998	4 371	2 157	2 214	9 031	4 376	4 655	-4 660	-2 219	-2 441
1999	3 669	2 091	1 578	8 487	4 143	4 344	-4 818	-2 052	-2 766
2000	3 053	1 505	1 548	10 262	5 126	5 136	-7 209	-3 621	-3 588
2001	4 832	2 575	2 257	12 260	5 815	6 445	-7 428	-3 240	-4 188
2002	6 545	3 718	2 818	10 890	5 224	5 666	-4 345	-1 497	-2 848



1. HISTORICAL TABLE  
 1.1 MIGRATION - DOCUMENTED IMMIGRATION AND SELF-DECLARED EMIGRATION  
 1.2 OCCUPATION - 2000 TO 2002

OCCUPATION	2000			2001			2002		
	IMMI-GRANTS	EMI-GRANTS	NET GAIN/LOSS	IMMI-GRANTS	EMI-GRANTS	NET GAIN/LOSS	IMMI-GRANTS	EMI-GRANTS	NET GAIN/LOSS
<b>GRAND TOTAL</b>	3 053	10 262	-7 209	4 832	12 260	-7 428	6 545	10 890	-4 345
<b>TOTAL - ECONOMICALLY ACTIVE</b>	662	6 434	-5 772	953	7 591	-6 638	1 054	7 334	-6 280
PROFESSIONAL, SEMI-PROFESSIONAL AND TECHNICAL OCCUPATIONS	331	2439	-2 108	524	2 929	-2 405	576	2 689	-2 113
ENGINEER, ENGINEERING TECHNICIAN, ARCHITECT AND RELATED OCCUPATIONS	24	433	-409	62	474	-412	34	464	-430
ENGINEER AND RELATED TECHNOLOGIST/TECHNICIAN	20	360	-340	58	399	-341	27	390	-363
INDUSTRIAL/PRODUCTION	12	29	-17	24	11	13	19	31	12
CHEMICAL	-	6	-6	-	-	-	-	5	-5
ELECTRICAL AND RELATED	4	16	-12	4	5	-1	2	7	-5
AGRICULTURAL	-	-	-	-	-	-	-	-	-
MECHANICAL	2	13	-11	-	8	-8	2	3	-1
METALLURGICAL	-	-	-	-	-	-	-	-	-
MINING	-	-	-	-	-	-	1	-	1
CIVIL AND RELATED	2	32	30	3	27	-24	3	16	-13
ENGINEER AND RELATED	-	237	-237	27	321	-273	-	328	-328
TECHNICIAN: DRAFTSMAN	-	10	-10	1	14	-13	1	9	-8
TECHNICAL INSPECTOR AND RELATED OCCUPATIONS	-	2	-2	-	2	-2	-	2	-2
ARCHITECT AND RELATED OCCUPATIONS	-	45	-45	2	38	-36	4	44	-40
LAND SURVEYOR AND RELATED OCCUPATIONS	2	16	14	1	21	-20	-	19	-19
NATURAL SCIENCE OCCUPATIONS	38	324	-286	59	427	-368	59	359	-300

1 HISTORICAL TABLE  
 1.1 MIGRATION - DOCUMENTED IMMIGRATION AND SELF-DECLARED EMIGRATION  
 1.1.2 OCCUPATION - 2000 TO 2002 (CONTINUED)

OCCUPATION	2000			2001			2002		
	IMMI-GRANTS	EMI-GRANTS	NET GAIN/LOSS	IMMI-GRANTS	EMI-GRANTS	NET GAIN/LOSS	IMMI-GRANTS	EMI-GRANTS	NET GAIN/LOSS
PHYSICAL SCIENTIST AND RELATED OCCUPATIONS	4	14	-10	6	8	-2	4	4	-
GEOLOGICAL SCIENCES OCCUPATIONS	2	14	-12	7	14	-7	6	5	1
MATHEMATICAL AND RELATED OCCUPATIONS	-	8	-8	-	13	-13	2	5	-3
COMPUTER SCIENCES OCCUPATIONS	12	173	-161	23	242	-219	11	254	-243
CHEMICAL SCIENCES OCCUPATIONS	-	10	-10	1	13	-12	-	14	-14
BIOLOGICAL SCIENCES OCCUPATIONS	-	16	-16	-	19	-19	1	9	-8
AGRICULTURAL FORESTRY AND FOOD SCIENCES OCCUPATIONS	1	16	-15	1	12	-11	1	5	-4
NATURAL SCIENCES TECHNOLOGIST	1	7	-6	-	7	-7	-	3	-3
NATURAL SCIENCES TECHNICIAN	18	66	-48	21	99	-78	34	60	-26
MEDICAL, DENTAL AND RELATED HEALTH SERVICES OCCUPATIONS	36	459	-423	41	539	-498	88	447	-359
MEDICAL PRACTITIONER, PHYSICIAN	21	89	-68	16	88	-72	65	117	-52
MEDICAL SPECIALIST	1	16	-15	1	6	-5	2	11	-9
MEDICAL PROFESSIONS, NEC	2	21	-19	4	16	-12	1	11	-10
DENTAL PROFESSIONS	1	31	-30	1	27	-26	5	14	-9
VETERINARY SCIENCES PROFESSIONS	1	10	-9	1	12	-11	2	8	-6
PHARMACEUTICAL PROFESSIONS	2	24	-22	4	47	-43	1	52	-51
SUPPLEMENTARY MEDICAL PROFESSIONS	-	71	-71	3	104	-101	5	80	-75
NURSING PROFESSIONS	4	147	-143	5	196	-191	6	135	-129
TECHNICIANS: MEDICAL AND RELATED SCIENCES	2	10	-8	-	3	-3	-	4	-4
HEALTH SERVICES PROFESSIONS, NEC	2	40	-38	6	40	-34	1	15	-14
EDUCATIONAL AND RELATED OCCUPATIONS	106	357	-251	179	438	-259	189	410	-221
HUMANITIES AND RELATED OCCUPATIONS	114	616	-502	162	785	-623	179	735	-556
LEGAL OCCUPATIONS	2	68	-66	-	86	-86	3	77	-74
RELIGIOUS PROFESSIONS	32	62	-30	52	57	-5	65	35	30
SOCIAL SCIENCES OCCUPATIONS	5	39	-34	13	146	-133	7	52	-45
PERSONNEL AND MANAGEMENT SERVICES OCCUPATIONS	53	54	-1	47	45	2	57	18	39

1. HISTORICAL TABLE  
 1.1 MIGRATION - DOCUMENTED IMMIGRATION AND SELF-DECLARED EMIGRATION  
 1.2 OCCUPATION - 2000 TO 2002 (CONTINUED)

OCCUPATION	2000			2001			2002		
	IMMI-GRANTS	EMI-GRANTS	NET GAIN/LOSS	IMMI-GRANTS	EMI-GRANTS	NET GAIN/LOSS	IMMI-GRANTS	EMI-GRANTS	NET GAIN/LOSS
ACCOUNTANT AND RELATED ACCOUNTING OCCUPATIONS	14	361	-347	43	518	-475	41	529	-488
ECONOMIC OCCUPATIONS	4	27	-23	5	23	-18	4	14	-10
HUMANITIES AND RELATED OCCUPATIONS, NEC	4	5	-1	2	785	-783	2	10	-8
ART, SPORT AND ENTERTAINMENT OCCUPATIONS	13	250	-237	21	266	-245	27	274	-247
ARTIST PLASTIC ARTS	-	20	-20	1	22	-21	-	11	-11
DESIGNER	1	77	-76	6	76	-70	4	98	-94
ARTIST PERFORMING ARTS AND RELATED OCCUPATIONS	2	60	-58	3	56	-53	13	55	-42
AUTHOR AND RELATED OCCUPATIONS	8	57	-49	2	64	-62	3	57	-54
SPORTS OCCUPATIONS	2	36	-34	9	48	-39	7	53	-46
MANAGERIAL, EXECUTIVE AND ADMINISTRATIVE OCCUPATIONS	241	891	-650	258	954	-696	382	1 146	-764
LEGISLATIVE, EXECUTIVE AND MANAGERIAL OCCUPATIONS (GOVERNMENT SECTOR)	1	35	-34	2	55	-53	-	46	-46
MANAGERIAL OCCUPATIONS (EXCLUDING GOVERNMENT SECTOR)	240	844	-640	256	891	-635	381	1 094	-713
ADMINISTRATIVE OCCUPATIONS	-	12	-12	-	8	-8	1	6	-5
CLERICAL AND SALES OCCUPATIONS	21	1 057	-1 036	62	1 279	-1 217	26	1 119	-1 093
CLERICAL OCCUPATIONS	12	516	-504	14	727	-713	17	596	-579
SALES OCCUPATIONS	9	541	-532	48	552	-504	9	523	-514

1. HISTORICAL TABLE  
 1.1 MIGRATION - DOCUMENTED IMMIGRATION AND SELF-DECLARED EMIGRATION  
 1.2 OCCUPATION - 2000 TO 2002 (CONTINUED)

OCCUPATION	2000			2001			2002		
	IMMI-GRANTS	EMI-GRANTS	NET GAIN/LOSS	IMMI-GRANTS	EMI-GRANTS	NET GAIN/LOSS	IMMI-GRANTS	EMI-GRANTS	NET GAIN/LOSS
TRANSPORT, DELIVERY AND COMMUNICATIONS OCCUPATIONS	5	67	-62	3	53	-50	5	54	-49
TRANSPORT OCCUPATIONS	5	60	-55	3	49	-46	3	51	-48
COMMUNICATION OCCUPATIONS	-	7	-7	-	4	-4	2	3	-1
SERVICE OCCUPATIONS	4	146	-142	16	208	-192	21	129	-108
PROTECTIVE SERVICE OCCUPATIONS	-	49	-49	3	50	-47	4	33	-29
CATERING AND ACCOMMODATION SERVICES OCCUPATIONS	4	37	-33	10	81	-71	15	47	-32
PERSONAL AND RELATED SERVICES OCCUPATIONS	-	43	-43	3	59	-56	2	37	-35
SERVICES OCCUPATIONS,NEC	-	17	-17	-	18	-18	-	12	-12
FARMING AND RELATED OCCUPATIONS	4	34	-30	-	33	-33	2	25	-23
FARMER, FARM MANAGER	3	32	-29	-	28	-28	1	24	-23
FARM, FOREST, NURSERY AND RELATED WORKER	1	-	1	-	2	-2	1	-	1
FARMING AND RELATED OCCUPATIONS, NEC	-	2	-2	-	3	-3	-	1	-1
ARTISAN APPRENTICE AND RELATED OCCUPATIONS	15	289	-274	11	304	-293	14	253	-239
ARTISAN	14	277	-263	10	289	-279	10	249	-239
APPRENTICE/TRAINEE	-	1	-1	-	-	-	-	2	-2
TRADE RELATED OCCUPATIONS	1	11	-10	1	15	-14	4	2	2

1. HISTORICAL TABLE  
 1.1 MIGRATION - DOCUMENTED IMMIGRATION AND SELF-DECLARED EMIGRATION  
 1.2 OCCUPATION - 2000 TO 2002 (CONCLUDED)

OCCUPATION	2000			2001			2002		
	IMMI-GRANTS	EMI-GRANTS	NET GAIN/LOSS	IMMI-GRANTS	EMI-GRANTS	NET GAIN/LOSS	IMMI-GRANTS	EMI-GRANTS	NET GAIN/LOSS
PRODUCTION FOREMAN AND SUPERVISOR MINER AND QUARRY WORKER, OPERATOR PRODUCTION AND RELATED WORKER	5	61	-56	10	79	-69	9	39	-30
PRODUCTION FOREMAN, PRODUCTION SUPERVISOR	1	23	-22	2	25	-23	2	23	-21
MINING QUARRY AND RELATED WORKER	2	5	-3	1	4	-3	-	-	-
OPERATOR, PRODUCTION WORKER AND RELATED SEMI-SKILLED WORKER	2	19	-17	4	29	-25	6	14	-8
LABOURER AND OTHER UNSKILLED WORKER NEC	-	14	-14	3	21	-18	1	2	-1
OCCUPATION UNSPECIFIED AND,NEC	36	1 450	-1 414	69	1 752	-1 683	19	1 880	-1 861
TOTAL - NOT ECONOMICALLY ACTIVE	2 391	3 828	-1 437	3 879	4 669	-790	5 491	3 556	1 935
HOUSE-KEEPING	598	822	-224	137	1 000	-863	131	876	-745
CHILD - NOT SCHOLAR	130	754	-624	204	943	-739	236	593	-357
SCHOLAR/STUDENT	809	1 876	-1 067	901	2 386	-1 485	1 182	1 798	-616
OTHER	854	376	478	2 637	338	2 299	3 942	289	3 653

2. DOCUMENTED IMMIGRANTS  
2.1 SINGLE AGES BY GENDER

AGE	TOTAL	MALE	FEMALE	AGE	TOTAL	MALE	FEMALE
<b>TOTAL</b>	6 545	3 727	2 818				
-1	6	3	3	30	252	155	97
1	29	16	13	31	255	152	103
2	51	32	19	32	276	169	107
3	47	23	24	33	264	182	82
4	55	27	28	34	257	165	92
-5	188	101	87	30-34	1 304	823	481
5	50	25	25	35	232	148	84
6	49	21	28	36	212	134	78
7	62	38	24	37	207	131	76
8	58	35	23	38	189	124	65
9	70	40	30	39	174	116	58
5-9	289	159	130	35-39	1 014	653	361
10	70	32	38	40	157	93	64
11	73	38	35	41	96	53	43
12	77	39	38	42	132	79	53
13	70	38	32	43	107	66	41
14	63	35	28	44	84	40	44
10-14	353	182	171	40-44	576	331	245
15	75	37	38	45	110	61	49
16	82	45	37	46	107	65	42
17	74	38	36	47	86	44	42
18	71	35	36	48	69	44	25
19	61	32	29	49	66	36	30
15-19	363	187	176	45-49	438	250	188
20	56	18	38	50	55	35	20
21	59	20	39	51	62	36	26
22	62	25	37	52	53	39	14
23	79	37	42	53	56	30	26
24	86	27	59	54	48	32	16
20-24	342	127	215	50-54	274	172	102
25	97	39	58	55	44	25	19
26	151	62	89	56	41	26	15
27	173	92	81	57	40	25	15
28	209	108	101	58	26	17	9
29	218	141	77	59	31	19	12
25-29	848	442	406	55-59	182	112	70

2. DOCUMENTED IMMIGRANTS

2.1 SINGLE AGES BY GENDER (CONCLUDED)

AGE	TOTAL	MALE	FEMALE	AGE	TOTAL	MALE	FEMALE
60	34	17	17	70	16	6	10
61	38	20	18	71	10	6	4
62	19	8	11	72	14	7	7
63	24	12	12	73	14	8	6
64	29	19	10	74	9	4	5
60-64	144	76	68	70-74	63	31	32
65	20	7	13	75	84	33	51
66	24	19	5				
67	12	9	3				
68	15	6	9				
69	12	7	5				
65-69	83	48	35				

2. DOCUMENTED IMMIGRANTS  
2.2 OCCUPATION BY GENDER AND AGE

OCCUPATION		TOTAL	-20	20-24	25-29	30-34	35-44	45-54	55-64	65+
<b>GRAND TOTAL</b>										
	T	6 545	1 193	342	848	1 304	1 590	712	326	230
	M	3 727	629	127	442	823	984	422	188	112
	F	2 818	564	215	406	481	606	290	138	118
<b>TOTAL - ECONOMICALLY ACTIVE</b>										
	T	1 054	-	5	67	187	379	299	103	14
	M	827	-	2	52	125	301	250	85	12
	F	227	-	3	15	62	78	49	18	2
PROFESSIONAL, SEMI-PROFESSIONAL AND TECHNICAL OCCUPATIONS										
	T	576	-	4	34	90	198	178	64	8
	M	456	-	2	26	58	160	150	53	7
	F	120	-	2	8	32	38	28	11	1
ENGINEER, ENGINEERING TECHNICIAN, ARCHITECT AND RELATED OCCUPATION										
	T	34	-	-	3	9	10	10	1	1
	M	31	-	-	2	8	10	9	1	1
	F	3	-	-	1	1	-	1	-	-
ENGINEER AND RELATED TECHNOLOGIST/TECHNICIAN										
	T	27	-	-	3	8	7	7	1	1
	M	25	-	-	2	7	7	7	1	1
	F	2	-	-	1	1	-	-	-	-
INDUSTRIAL/PRODUCTION										
	T	19	-	-	2	7	4	6	-	-
	M	17	-	-	1	6	4	6	-	-
	F	2	-	-	1	1	-	-	-	-
ELECTRICAL AND RELATED										
	T	2	-	-	-	-	2	-	-	-
	M	2	-	-	-	-	2	-	-	-
MECHANICAL										
	T	2	-	-	-	-	-	1	1	-
	M	2	-	-	-	-	-	1	1	-
MINING										
	T	1	-	-	-	1	-	-	-	-
	M	1	-	-	-	1	-	-	-	-



2. DOCUMENTED IMMIGRANTS  
2.2 OCCUPATION BY GENDER AND AGE (CONTINUED)

OCCUPATION		TOTAL	-20	20-24	25-29	30-34	35-44	45-54	55-64	65+
CIVIL AND RELATED										
	T	3	-	-	1	-	1	-	-	1
	M	3	-	-	1	-	1	-	-	1
TECHNICIAN: DRAFTSMAN										
	T	1	-	-	-	-	-	1	-	-
	M	1	-	-	-	-	-	1	-	-
TECHNICAL INSPECTOR AND RELATED OCCUPATIONS										
	T	2	-	-	-	-	1	1	-	-
	M	2	-	-	-	-	1	1	-	-
ARCHITECT AND RELATED OCCUPATIONS										
	T	4	-	-	-	1	2	1	-	-
	M	3	-	-	-	1	2	-	-	-
	F	1	-	-	-	-	-	1	-	-
NATURAL SCIENCE OCCUPATIONS										
	T	59	-	1	4	8	24	21	1	-
	M	49	-	1	4	5	20	18	1	-
	F	10	-	-	-	3	4	3	-	-
PHYSICAL SCIENTIST AND RELATED OCCUPATIONS										
	T	4	-	-	-	2	-	2	-	-
	M	3	-	-	-	1	-	2	-	-
	F	1	-	-	-	1	-	-	-	-
GEOLOGICAL SCIENCES OCCUPATIONS										
	T	6	-	-	-	2	2	2	-	-
	M	5	-	-	-	1	2	2	-	-
	F	1	-	-	-	1	-	-	-	-
MATHEMATICAL AND RELATED OCCUPATIONS										
	T	2	-	-	1	-	1	-	-	-
	M	2	-	-	1	-	1	-	-	-
COMPUTER SCIENCES OCCUPATIONS										
	T	11	-	-	1	3	6	1	-	-
	M	7	-	-	1	2	4	-	-	-
	F	4	-	-	-	1	2	1	-	-

2. DOCUMENTED IMMIGRANTS  
2.2 OCCUPATION BY GENDER AND AGE (CONTINUED)

OCCUPATION		TOTAL	-20	20-24	25-29	30-34	35-44	45-54	55-64	65+
BIOLOGICAL SCIENCES OCCUPATIONS										
	T	1	-	-	-	-	1	-	-	-
	M	1	-	-	-	-	1	-	-	-
AGRICULTURAL, FORESTRY AND FOOD SCIENCES OCCUPATIONS										
	T	1	-	1	-	-	-	-	-	-
	M	1	-	1	-	-	-	-	-	-
NATURAL SCIENCES TECHNICIAN										
	T	34	-	-	2	1	14	16	1	-
	M	30	-	-	2	1	12	14	1	-
	F	4	-	-	-	-	2	2	-	-
MEDICAL, DENTAL AND RELATED HEALTH SERVICES OCCUPATIONS										
	T	88	-	-	3	7	40	30	8	-
	M	73	-	-	3	5	34	26	5	-
	F	15	-	-	-	2	6	4	3	-
MEDICAL PRACTITIONER, PHYSICIAN										
	T	65	-	-	2	6	32	22	3	-
	M	57	-	-	2	4	29	19	3	-
	F	8	-	-	-	2	3	3	-	-
MEDICAL SPECIALIST										
	T	2	-	-	-	-	-	1	1	-
	M	1	-	-	-	-	-	1	-	-
	F	1	-	-	-	-	-	-	1	-
MEDICAL PROFESSIONS, NEC										
	T	1	-	-	-	-	-	1	-	-
	M	1	-	-	-	-	-	1	-	-
DENTAL PROFESSIONS										
	T	5	-	-	-	-	3	-	2	-
	M	5	-	-	-	-	3	-	2	-
VETERINARY SCIENCES PROFESSIONS										
	T	2	-	-	1	-	-	1	-	-
	M	2	-	-	1	-	-	1	-	-
PHARMACEUTICAL PROFESSIONS										
	T	1	-	-	-	-	1	-	-	-
	M	1	-	-	-	-	1	-	-	-

2. DOCUMENTED IMMIGRANTS  
2.2 OCCUPATION BY GENDER AND AGE (CONTINUED)

OCCUPATION		TOTAL	-20	20-24	25-29	30-34	35-44	45-54	55-64	65+
SUPPLEMENTARY MEDICAL PROFESSIONS										
T		5	-	-	-	1	1	2	1	-
M		4	-	-	-	1	1	2	-	-
F		1	-	-	-	-	-	-	1	-
NURSING PROFESSIONS										
T		6	-	-	-	-	3	3	-	-
M		2	-	-	-	-	-	2	-	-
F		4	-	-	-	-	3	1	-	-
HEALTH SERVICES PROFESSIONS, NEC										
T		1	-	-	-	-	-	-	1	-
M		1	-	-	-	-	-	-	1	-
F										
EDUCATIONAL AND RELATED OCCUPATIONS										
T		189	-	-	7	23	52	73	33	1
M		147	-	-	4	13	41	60	28	1
F		42	-	-	3	10	11	13	5	-
HUMANITIES AND RELATED OCCUPATIONS										
T		179	-	2	14	36	60	41	20	6
M		137	-	1	12	22	46	34	17	5
F		42	-	1	2	14	14	7	3	1
LEGAL OCCUPATIONS										
T		3	-	-	1	1	1	-	-	-
M		1	-	-	1	-	-	-	-	-
F		2	-	-	-	1	1	-	-	-
RELIGIOUS PROFESSIONS										
T		65	-	-	2	8	24	20	8	3
M		54	-	-	2	7	20	16	7	2
F		11	-	-	-	1	4	4	1	1
SOCIAL SCIENCES OCCUPATIONS										
T		7	-	-	2	4	1	-	-	-
M		5	-	-	2	2	1	-	-	-
F		2	-	-	-	2	-	-	-	-
PERSONNEL AND MANAGEMENT SERVICES OCCUPATIONS										
T		57	-	1	3	10	14	15	11	3
M		46	-	1	2	5	11	14	10	3
F		11	-	-	1	5	3	1	1	-

2. DOCUMENTED IMMIGRANTS  
2.2 OCCUPATION BY GENDER AND AGE (CONTINUED)

OCCUPATION		TOTAL	-20	20-24	25-29	30-34	35-44	45-54	55-64	65+
ACCOUNTANT AND RELATED ACCOUNTING OCCUPATIONS										
	T	41	-	1	5	11	18	5	1	-
	M	30	-	-	4	8	14	4	-	-
	F	11	-	1	1	3	4	1	1	-
ECONOMIC OCCUPATIONS										
	T	4	-	-	1	2	-	1	-	-
	M	1	-	-	1	-	-	-	-	-
	F	3	-	-	-	2	-	1	-	-
HUMANITIES AND RELATED OCCUPATIONS NEC										
	T	2	-	-	-	-	2	-	-	-
	M	2	-	-	-	-	2	-	-	-
ART, SPORT AND ENTERTAINMENT OCCUPATIONS										
	T	27	-	1	3	7	12	3	1	-
	M	19	-	-	1	5	9	3	1	-
	F	8	-	1	2	2	3	-	-	-
DESIGNER										
	T	4	-	-	1	-	3	-	-	-
	M	2	-	-	-	-	2	-	-	-
	F	2	-	-	1	-	1	-	-	-
ARTIST, PERFORMING ARTS AND RELATED OCCUPATIONS										
	T	13	-	1	1	3	7	1	-	-
	M	8	-	-	1	1	5	1	-	-
	F	5	-	1	-	2	2	-	-	-
AUTHOR AND RELATED OCCUPATIONS										
	T	3	-	-	1	-	-	1	1	-
	M	2	-	-	-	-	-	1	1	-
	F	1	-	-	1	-	-	-	-	-
SPORTS OCCUPATIONS										
	T	7	-	-	-	4	2	1	-	-
	M	7	-	-	-	4	2	1	-	-

2. DOCUMENTED IMMIGRANTS  
2.2 OCCUPATION BY GENDER AND AGE (CONTINUED)

OCCUPATION		TOTAL	-20	20-24	25-29	30-34	35-44	45-54	55-64	65+
MANAGERIAL, EXECUTIVE AND ADMINISTRATIVE OCCUPATIONS										
T		382	-	-	23	74	145	102	34	4
M		301	-	-	17	47	118	87	28	4
F		81	-	-	6	27	27	15	6	-
MANAGERIAL OCCUPATIONS (EXCLUDING GOVERNMENT SECTOR)										
T		381	-	-	23	73	145	102	34	4
M		300	-	-	17	46	118	87	28	4
F		81	-	-	6	27	27	15	6	-
ADMINISTRATIVE OCCUPATIONS										
T		1	-	-	-	1	-	-	-	-
M		1	-	-	-	1	-	-	-	-
CLERICAL AND SALES OCCUPATIONS										
T		26	-	-	2	7	11	5	1	-
M		13	-	-	1	5	4	2	1	-
F		13	-	-	1	2	7	3	-	-
CLERICAL OCCUPATIONS										
T		17	-	-	1	4	7	4	1	-
M		7	-	-	-	3	1	2	1	-
F		10	-	-	1	1	6	2	-	-
SALES OCCUPATIONS										
T		9	-	-	1	3	4	1	-	-
M		6	-	-	1	2	3	-	-	-
F		3	-	-	-	1	1	1	-	-
TRANSPORT, DELIVERY AND COMMUNICATIONS OCCUPATIONS										
T		5	-	1	-	2	2	-	-	-
M		3	-	-	-	1	2	-	-	-
F		2	-	1	-	1	-	-	-	-
TRANSPORT OCCUPATIONS										
T		3	-	-	-	1	2	-	-	-
M		3	-	-	-	1	2	-	-	-
COMMUNICATIONS OCCUPATIONS										
T		2	-	1	-	1	-	-	-	-
F		2	-	1	-	1	-	-	-	-

2. DOCUMENTED IMMIGRANTS  
2.2 OCCUPATION BY GENDER AND AGE (CONTINUED)

OCCUPATION		TOTAL	-20	20-24	25-29	30-34	35-44	45-54	55-64	65+
SERVICE OCCUPATIONS										
	T	21	-	-	4	4	8	4	1	-
	M	20	-	-	4	4	7	4	1	-
	F	1	-	-	-	-	1	-	-	-
PROTECTIVE SERVICE OCCUPATIONS										
	T	4	-	-	-	1	3	-	-	-
	M	4	-	-	-	1	3	-	-	-
CATERING AND ACCOMMODATION SERVICES OCCUPATIONS										
	T	15	-	-	4	3	4	3	1	-
	M	15	-	-	4	3	4	3	1	-
PERSONAL AND RELATED SERVICES OCCUPATIONS										
	T	2	-	-	-	-	1	1	-	-
	M	1	-	-	-	-	-	1	-	-
	F	1	-	-	-	-	1	-	-	-
FARMING AND RELATED OCCUPATIONS										
	T	2	-	-	1	1	-	-	-	-
	M	2	-	-	1	1	-	-	-	-
FARMER, FARM MANAGER										
	T	1	-	-	1	-	-	-	-	-
	M	1	-	-	1	-	-	-	-	-
FARM, FOREST, NURSERY AND RELATED WORKER										
	T	1	-	-	-	1	-	-	-	-
	M	1	-	-	-	1	-	-	-	-
ARTISAN, APPRENTICE AND RELATED OCCUPATIONS										
	T	14	-	-	-	2	6	4	2	-
	M	13	-	-	-	2	5	4	2	-
	F	1	-	-	-	-	1	-	-	-
ARTISAN										
	T	10	-	-	-	2	3	4	1	-
	M	9	-	-	-	2	2	4	1	-
	F	1	-	-	-	-	1	-	-	-

2. DOCUMENTED IMMIGRANTS  
2.2 OCCUPATION BY GENDER AND AGE (CONCLUDED)

OCCUPATION		TOTAL	-20	20-24	25-29	30-34	35-44	45-54	55-64	65+
TRADE RELATED OCCUPATIONS										
	T	4	-	-	-	-	3	-	1	-
	M	4	-	-	-	-	3	-	1	-
PRODUCTION SUPERVISOR, MINER, QUARRY AND RELATED WORKER										
	T	9	-	-	-	3	4	2	-	-
	M	9	-	-	-	3	4	2	-	-
PRODUCTION FOREMAN/-SUPERVISOR										
	T	2	-	-	-	-	1	1	-	-
	M	2	-	-	-	-	1	1	-	-
OPERATOR, PRODUCTION AND RELATED SEMI-SKILLED WORKER										
	T	6	-	-	-	2	3	1	-	-
	M	6	-	-	-	2	3	1	-	-
LABOURER AND OTHER UNSKILLED WORKER NEC										
	T	1	-	-	-	1	-	-	-	-
	M	1	-	-	-	1	-	-	-	-
OCCUPATION UNSPECIFIED AND NEC										
	T	19	-	-	3	4	5	4	1	2
	M	10	-	-	3	4	1	1	-	1
	F	9	-	-	-	-	4	3	1	1
TOTAL - NOT ECONOMICALLY ACTIVE										
	T	5 491	1 193	337	781	1 117	1 211	413	223	216
	M	2 900	629	125	390	698	683	172	103	100
	F	2 591	564	212	391	419	528	241	120	116
HOMEMAKER										
	T	131	-	7	13	34	37	32	6	2
	M	21	-	2	2	6	7	4	-	-
	F	110	-	5	11	28	30	28	6	2
CHILD - NOT SCHOLAR/STUDENT										
	T	236	236	-	-	-	-	-	-	-
	M	125	125	-	-	-	-	-	-	-
	F	111	111	-	-	-	-	-	-	-
SCHOLAR/STUDENT										
	T	1 182	946	177	57	2	-	-	-	-
	M	616	502	86	27	1	-	-	-	-
	F	566	444	91	30	1	-	-	-	-
OTHER										
	T	3 942	11	153	711	1 081	1 174	381	217	214
	M	2 138	2	37	361	691	676	168	103	100
	F	1 804	9	116	350	390	498	213	114	114

2. DOCUMENTED IMMIGRANTS  
2.3 COUNTRY OF PREVIOUS PERMANENT RESIDENCE BY OCCUPATION

COUNTRY	OCCUPATIONAL GROUP											
	TOTAL	ECONO- MICALLY ACTIVE	PROF., SE- MI-PROF. AND TECH- NICAL	MANAGERIAL AND EXECUTIVE, AND ADMINI- STRATIVE	CLERICAL AND SALES	TRANSPORT AND DELIVERY AND COMMUNI- CATIONS	SERVICE	FARM- ING	ARTISAN AND APPREN- TICE	MINING, QUARRY- ING AND PRODUC- TION	NOT CLASSI- FIABLE AND UNSPEC.	NOT ECONO- MICALLY ACTIVE
<b>TOTAL</b>	6 545	1 054	576	382	26	5	21	2	14	9	19	5 491
<b>OVERSEAS</b>	4 058	791	385	328	18	4	19	2	12	8	15	3 267
<b>EUROPE</b>	1 847	380	173	168	12	3	6	-	5	5	8	1 467
ALBANIA	4	1	-	1	-	-	-	-	-	-	-	3
AUSTRIA	11	3	2	1	-	-	-	-	-	-	-	8
BELARUS	2	-	-	-	-	-	-	-	-	-	-	2
BELGIUM	64	20	1	17	1	-	1	-	-	-	-	44
BULGARIA	149	14	14	-	-	-	-	-	-	-	-	135
CROATIA	5	1	1	-	-	-	-	-	-	-	-	4
CZECHOSLOVAKIA	6	1	1	-	-	-	-	-	-	-	-	5
DENMARK	22	3	-	3	-	-	-	-	-	-	-	19
ESTONIA	1	-	-	-	-	-	-	-	-	-	-	1
FINLAND	5	1	1	-	-	-	-	-	-	-	-	4
FRANCE	84	17	3	11	1	-	1	-	-	-	1	67
GERMANY	286	75	35	24	7	1	2	-	3	2	1	211
GREECE	6	-	-	-	-	-	-	-	-	-	-	6
HUNGARY	9	-	-	-	-	-	-	-	-	-	-	9
IRELAND	39	10	7	2	-	-	-	-	-	-	1	29
ITALY	51	12	7	4	-	-	-	-	-	1	-	39
LATVIA	2	-	-	-	-	-	-	-	-	-	-	2
LITHUANIA	8	1	-	1	-	-	-	-	-	-	-	7
MALTA	2	2	1	1	-	-	-	-	-	-	-	-
NETHERLANDS	92	26	11	14	1	-	-	-	-	-	-	66
NORWAY	6	-	-	-	-	-	-	-	-	-	-	6
POLAND	22	2	1	1	-	-	-	-	-	-	-	20
PORTUGAL	43	5	2	3	-	-	-	-	-	-	-	38
ROMANIA	38	7	6	-	-	-	-	-	-	1	-	31
RUSSIAN FEDERATION	77	10	9	-	1	-	-	-	-	-	-	67
SLOVAK REP	2	-	-	-	-	-	-	-	-	-	-	2



2. DOCUMENTED IMMIGRANTS

2.3 COUNTRY OF PREVIOUS PERMANENT RESIDENCE BY OCCUPATION (CONTINUED)

COUNTRY	OCCUPATIONAL GROUP											
	TOTAL	ECONO- MICALLY ACTIVE	PROF., SE- MI-PROF. AND TECH- NICAL	MANAGERIAL AND EXECUTIVE, AND ADMINI- STRATIVE	CLERICAL AND SALES	TRANSPORT AND DELIVERY AND COMMUNI- CATIONS	SERVICE	FARM- ING	ARTISAN AND APPREN- TICE	MINING, QUARRY- ING AND PRODUC- TION	NOT CLASSI- FIABLE AND UNSPEC.	NOT ECONO- MICALLY ACTIVE
SLOVENIA	1	-	-	-	-	-	-	-	-	-	-	1
SPAIN	8	-	-	-	-	-	-	-	-	-	-	8
SWEDEN	14	5	5	-	-	-	-	-	-	-	-	9
SWITZERLAND	56	17	5	11	-	-	-	-	1	-	-	39
UK	668	139	57	72	1	1	2	-	1	1	4	529
UKRAINE	27	4	1	1	-	1	-	-	-	-	1	23
YUGOSLAVIA	37	4	3	1	-	-	-	-	-	-	-	33
<b>NORTH AMERICA</b>	184	45	23	19	-	-	-	1	1	-	1	139
CANADA	34	5	3	2	-	-	-	-	-	-	-	29
USA	150	40	20	17	-	-	-	1	1	-	1	110
<b>CENTRAL &amp; SOUTH AMERICA</b>	60	11	5	6	-	-	-	-	-	-	-	49
ARGENTINA	12	1	-	1	-	-	-	-	-	-	-	11
BRAZIL	22	6	4	2	-	-	-	-	-	-	-	16
CHILE	7	2	1	1	-	-	-	-	-	-	-	5
COLOMBIA	2	-	-	-	-	-	-	-	-	-	-	2
CUBA	5	-	-	-	-	-	-	-	-	-	-	5
ECUADOR	1	-	-	-	-	-	-	-	-	-	-	1
MEXICO	1	-	-	-	-	-	-	-	-	-	-	1
PERU	3	-	-	-	-	-	-	-	-	-	-	3
TRINIDAD AND TOBAGO	1	1	-	1	-	-	-	-	-	-	-	-
URUGUAY	1	-	-	-	-	-	-	-	-	-	-	1
VENEZUELA	5	1	-	1	-	-	-	-	-	-	-	4
<b>AUSTRALASIA</b>	65	16	5	10	-	-	-	-	-	1	-	49
AUSTRALIA	53	13	5	8	-	-	-	-	-	-	-	40
FIJI	1	-	-	-	-	-	-	-	-	-	-	1
NEW ZEALAND	11	3	-	2	-	-	-	-	-	1	-	8

2. DOCUMENTED IMMIGRANTS

2.3 COUNTRY OF PREVIOUS PERMANENT RESIDENCE BY OCCUPATION (CONTINUED)

COUNTRY	OCCUPATIONAL GROUP											
	TOTAL	ECONO- MICALLY ACTIVE	PROF., SE- MI-PROF. AND TECH- NICAL	MANAGERIAL AND EXECUTIVE, AND ADMINI- STRATIVE	CLERICAL AND SALES	TRANSPORT DELIVERY AND COMMUNI- CATIONS	SERVICE	FARM- ING	ARTISAN AND APPREN- TICE	MINING, QUARRY- ING AND PRODUC- TION	NOT CLASSI- FIABLE AND UNSPEC.	NOT ECONO- MICALLY ACTIVE
<b>MIDDLE EAST</b>	103	15	1	13	-	-	-	1	-	-	-	88
CYPRUS	7	3	-	2	-	-	-	1	-	-	-	4
IRAN, ISLAMIC REP OF	22	4	1	3	-	-	-	-	-	-	-	18
IRAQ	2	-	-	-	-	-	-	-	-	-	-	2
ISRAEL	29	5	-	5	-	-	-	-	-	-	-	24
JORDAN	13	1	-	1	-	-	-	-	-	-	-	12
KUWAIT	1	-	-	-	-	-	-	-	-	-	-	1
LEBANON	8	-	-	-	-	-	-	-	-	-	-	8
SAUDI ARABIA	1	-	-	-	-	-	-	-	-	-	-	1
SYRIAN ARAB REP	2	-	-	-	-	-	-	-	-	-	-	2
TURKEY	17	2	-	2	-	-	-	-	-	-	-	15
YEMEN	1	-	-	-	-	-	-	-	-	-	-	1
<b>ASIA</b>	1 738	312	169	109	6	1	13	-	6	2	6	1 426
AFGHANISTAN	1	-	-	-	-	-	-	-	-	-	-	1
BANGLADESH	66	9	9	-	-	-	-	-	-	-	-	57
CHINA, PEOPLE'S REP OF	361	83	24	43	2	-	8	-	3	1	2	278
GEORGIA	4	1	1	-	-	-	-	-	-	-	-	3
HONG KONG	3	1	-	-	-	-	1	-	-	-	-	2
INDIA	608	125	99	22	1	-	-	-	1	1	1	483
INDONESIA	4	-	-	-	-	-	-	-	-	-	-	4
JAPAN	12	4	-	3	1	-	-	-	-	-	-	8
KAZAHSTAN	2	-	-	-	-	-	-	-	-	-	-	2
MALAYSIA	9	2	-	1	-	1	-	-	-	-	-	7
MONGOLIA	1	-	-	-	-	-	-	-	-	-	-	1
MYANMAR (BURMA)	12	3	3	-	-	-	-	-	-	-	-	9
NEPAL	10	4	4	-	-	-	-	-	-	-	-	6
PAKISTAN	345	15	5	8	-	-	1	-	-	-	1	330
PHILIPPINES	46	8	5	1	1	-	-	-	1	-	-	38
REP OF CHINA (TAIWAN)	127	30	10	19	-	-	-	-	-	-	1	97
REP OF KOREA	57	18	4	11	1	-	1	-	-	-	1	39
SINGAPORE	7	1	1	-	-	-	-	-	-	-	-	6
SRI LANKA	21	6	4	1	-	-	-	-	1	-	-	15
THAILAND	41	2	-	-	-	-	2	-	-	-	-	39
UZBEKISTAN	1	-	-	-	-	-	-	-	-	-	-	1

2. DOCUMENTED IMMIGRANTS

2.3 COUNTRY OF PREVIOUS PERMANENT RESIDENCE BY OCCUPATION (CONTINUED)

COUNTRY	OCCUPATIONAL GROUP											
	TOTAL	ECONO- MICALLY ACTIVE	PROF., SE- MI-PROF. AND TECH- NICAL	MANAGERIAL AND EXECUTIVE, AND ADMINI- STRATIVE	CLERICAL AND SALES	TRANSPORT DELIVERY AND COMMUNI- CATIONS	SERVICE	FARM- ING	ARTISAN AND APPREN- TICE	MINING, QUARRY- ING AND PRODUC- TION	NOT CLASSI- FIABLE AND UNSPEC.	NOT ECONO- MICALLY ACTIVE
INDIAN OCEAN ISLANDS	61	12	9	3	-	-	-	-	-	-	-	49
MAURITIUS	51	10	7	3	-	-	-	-	-	-	-	41
SEYCHELLES	10	2	2	-	-	-	-	-	-	-	-	8
<b>AFRICA</b>	2 472	263	191	54	8	1	2	-	2	1	4	2 209
ALGERIA	18	2	1	-	-	1	-	-	-	-	-	16
ANGOLA	15	1	1	-	-	-	-	-	-	-	-	14
BENIN	2	-	-	-	-	-	-	-	-	-	-	2
BOTSWANA	37	1	1	-	-	-	-	-	-	-	-	36
BURKINA FASO	1	-	-	-	-	-	-	-	-	-	-	1
BURUNDI	2	1	1	-	-	-	-	-	-	-	-	1
CAMEROON	54	6	2	3	1	-	-	-	-	-	-	48
CAPE VERDE ISLAND	1	-	-	-	-	-	-	-	-	-	-	1
COMOROS	1	-	-	-	-	-	-	-	-	-	-	1
CONGO	91	10	6	3	1	-	-	-	-	-	-	81
COTE D'IVOIRE	15	-	-	-	-	-	-	-	-	-	-	15
DEM REP OF CONGO	30	6	5	1	-	-	-	-	-	-	-	24
EGYPT	53	5	1	4	-	-	-	-	-	-	-	48
ETHIOPIA	18	2	1	1	-	-	-	-	-	-	-	16
GABON	1	-	-	-	-	-	-	-	-	-	-	1
GHANA	202	34	28	5	-	-	-	-	-	-	1	168
GUINEA	10	1	-	1	-	-	-	-	-	-	-	9
KENYA	75	21	16	4	1	-	-	-	-	-	-	54
LESOTHO	123	4	4	-	-	-	-	-	-	-	-	119
MADAGASCAR	4	2	-	2	-	-	-	-	-	-	-	2
MADEIRA ISLAND	4	-	-	-	-	-	-	-	-	-	-	4
MALAWI	66	3	2	1	-	-	-	-	-	-	-	63
MALI	3	-	-	-	-	-	-	-	-	-	-	3
MOROCCO	56	1	-	1	-	-	-	-	-	-	-	55
MOZAMBIQUE	87	-	-	-	-	-	-	-	-	-	-	87

2. DOCUMENTED IMMIGRANTS

2.3 COUNTRY OF PREVIOUS PERMANENT RESIDENCE BY OCCUPATION (CONCLUDED)

COUNTRY	OCCUPATIONAL GROUP											
	TOTAL	ECONO- MICALLY ACTIVE	PROF., SE- MI-PROF. AND TECH- NICAL	MANAGERIAL AND EXECUTIVE, AND ADMINI- STRATIVE	CLERICAL AND SALES	TRANSPORT AND DELIVERY AND COMMUNI- CATIONS	SERVICE	FARM- ING	ARTISAN AND APPREN- TICE	MINING, QUARRY- ING AND PRODUC- TION	NOT CLASSI- FIABLE AND UNSPEC.	NOT ECONO- MICALLY ACTIVE
NAMIBIA	3	-	-	-	-	-	-	-	-	-	-	3
NIGERIA	631	48	36	7	2	-	2	-	-	-	1	583
RWANDA	10	3	1	2	-	-	-	-	-	-	-	7
SENEGAL	30	2	-	2	-	-	-	-	-	-	-	28
SIERRA LEONE	6	1	-	1	-	-	-	-	-	-	-	5
SOMALIA	5	-	-	-	-	-	-	-	-	-	-	5
SUDAN	8	1	1	-	-	-	-	-	-	-	-	7
SWAZILAND	104	6	4	-	1	-	-	-	1	-	-	98
TUNISIA	4	-	-	-	-	-	-	-	-	-	-	4
UGANDA	111	33	32	1	-	-	-	-	-	-	-	78
UNITED REP OF TANZANIA	26	6	3	2	-	-	-	-	-	-	1	20
ZAIRE	30	6	5	1	-	-	-	-	-	-	-	24
ZAMBIA	101	15	13	1	-	-	-	-	1	-	-	86
ZIMBABWE	464	48	32	12	2	-	-	-	-	1	1	416
UNSPECIFIED	15	-	-	-	-	-	-	-	-	-	-	15

2. DOCUMENTED IMMIGRANTS  
2.4 COUNTRY OF PREVIOUS PERMANENT RESIDENCE AND GENDER

COUNTRY	PREVIOUS PERMANENT RESIDENCE			BIRTH PLACE			CITIZENSHIP		
	TOTAL	MALE	FEMALE	TOTAL	MALE	FEMALE	TOTAL	MALE	FEMALE
<b>TOTAL</b>	6 545	3 727	2 818	6 545	3 727	2 818	6 545	3 727	2 818
<b>OVERSEAS</b>	4 058	2 169	1 889	4 058	2 169	1 889	4 117	2 195	1 922
<b>EUROPE</b>	1 847	899	948	1 842	899	943	1 905	923	982
ALBANIA	4	2	2	4	2	2	5	3	2
AUSTRIA	11	6	5	11	6	5	15	8	7
BELARUS	2	-	2	2	-	2	2	-	2
BELGIUM	64	29	35	63	28	35	62	29	33
BOSNIA-HERZEGOVENA	-	-	-	1	1	-	-	-	-
BULGARIA	149	69	80	149	69	80	149	69	80
CROATIA	5	3	2	4	2	2	5	3	2
CZECHOSLOVAKIA	6	5	1	6	5	1	5	4	1
DENMARK	22	10	12	22	10	12	23	10	13
ESTONIA	1	-	1	1	-	1	1	-	1
FINLAND	5	4	1	4	4	-	4	3	1
FRANCE	84	41	43	84	42	42	82	41	41
GERMANY	286	133	153	287	134	153	288	133	155
GREECE	6	4	2	6	4	2	9	4	5
HUNGARY	9	2	7	9	2	7	9	2	7
IRELAND	39	24	15	39	24	15	40	23	17
ITALY	51	27	24	52	27	25	53	27	26
LATVIA	2	1	1	2	1	1	2	1	1
LITHUANIA	8	3	5	9	3	6	8	3	5
MALTA	2	1	1	2	1	1	2	1	1
NETHERLANDS	92	53	39	89	53	36	93	53	40
NORWAY	6	3	3	7	3	4	7	3	4
POLAND	22	6	16	23	6	17	20	5	15
PORTUGAL	43	17	26	43	17	26	50	20	30
ROMANIA	38	20	18	38	20	18	40	22	18
RUSSIAN FEDERATION	77	20	57	78	20	58	75	19	56
SLOVAK REP	2	-	2	2	-	2	2	-	2
SLOVENIA	1	1	-	1	1	-	1	1	-
SPAIN	8	4	4	7	4	3	5	3	2
SWEDEN	14	7	7	14	7	7	15	9	6
SWITZERLAND	56	31	25	56	31	25	59	32	27
UK	668	348	320	664	347	317	708	366	342
UKRAINE	27	9	18	26	9	17	28	9	19
YUGOSLAVIA	37	16	21	37	16	21	38	17	21

2. DOCUMENTED IMMIGRANTS  
2.4 COUNTRY OF PREVIOUS PERMANENT RESIDENCE AND GENDER (CONTINUED)

COUNTRY	PREVIOUS PERMANENT RESIDENCE			BIRTH PLACE			CITIZENSHIP		
	TOTAL	MALE	FEMALE	TOTAL	MALE	FEMALE	TOTAL	MALE	FEMALE
<b>NORTH AMERICA</b>	184	88	96	183	87	96	190	91	99
CANADA	34	13	21	32	11	21	36	13	23
USA	150	75	75	151	76	75	154	78	76
<b>CENTRAL &amp; SOUTH AMERICA</b>	60	30	30	59	28	31	57	28	29
ARGENTINA	12	6	6	13	6	7	14	7	7
BOLIVIA	-	-	-	-	-	-	1	1	-
BRAZIL	22	9	13	21	8	13	19	8	11
CHILE	7	3	4	7	3	4	7	3	4
COLOMBIA	2	-	2	2	-	2	2	-	2
CUBA	5	3	2	5	3	2	5	3	2
ECUADOR	1	1	-	1	1	-	-	-	-
MEXICO	1	1	-	-	-	-	-	-	-
PERU	3	2	1	3	2	1	3	2	1
TRINIDAD AND TOBAGO	1	1	-	1	1	-	1	1	-
URUGUAY	1	1	-	1	1	-	-	-	-
VENEZUELA	5	3	2	5	3	2	5	3	2
<b>AUSTRALASIA</b>	65	28	37	65	28	37	67	30	37
AUSTRALIA	53	20	33	53	20	33	55	22	33
FIJI	1	-	1	1	-	1	1	-	1
NEW ZEALAND	11	8	3	11	8	3	11	8	3
<b>MIDDLE EAST</b>	103	60	43	105	61	44	98	59	39
CYPRUS	7	4	3	7	4	3	5	3	2
IRAN, ISLAMIC REP OF	22	8	14	23	9	14	20	8	12
IRAQ	2	1	1	1	1	-	1	1	-
ISRAEL	29	18	11	30	18	12	29	18	11
JORDAN	13	11	2	10	8	2	14	12	2
KUWAIT	1	1	-	3	3	-	-	-	-
LEBANON	8	4	4	9	4	5	8	4	4
SAUDI ARABIA	1	-	1	2	1	1	1	-	1
SYRIAN ARAB REP	2	2	-	2	2	-	2	2	-
TURKEY	17	10	7	17	10	7	17	10	7
YEMEN	1	1	-	1	1	-	1	1	-

2. DOCUMENTED IMMIGRANTS  
2.4 COUNTRY OF PREVIOUS PERMANENT RESIDENCE AND GENDER (CONTINUED)

COUNTRY	PREVIOUS PERMANENT RESIDENCE			BIRTH PLACE			CITIZENSHIP		
	TOTAL	MALE	FEMALE	TOTAL	MALE	FEMALE	TOTAL	MALE	FEMALE
<b>ASIA</b>	1 738	1 027	711	1 743	1 029	714	1 738	1 026	712
AFGHANISTAN	1	-	1	1	-	1	1	-	1
BANGLADESH	66	47	19	66	47	19	66	47	19
CHINA, PEOPLE'S REP OF	361	181	180	362	182	180	363	183	180
GEORGIA	4	3	1	4	3	1	4	3	1
HONG KONG	3	3	-	3	3	-	1	1	-
INDIA	608	322	286	613	323	290	606	319	287
INDONESIA	4	-	4	4	-	4	4	-	4
JAPAN	12	8	4	12	8	4	12	8	4
KAZAHSTAN	2	1	1	3	1	2	3	1	2
MALAYSIA	9	3	6	8	3	5	9	3	6
MONGOLIA	1	1	-	1	1	-	1	1	-
MYANMAR (BURMA)	12	6	6	12	6	6	12	6	6
NEPAL	10	5	5	10	5	5	10	5	5
PAKISTAN	345	304	41	345	304	41	346	305	41
PHILIPPINES	46	19	27	46	19	27	46	19	27
REP OF CHINA (TAIWAN)	127	67	60	127	67	60	128	68	60
REP OF KOREA	57	29	28	57	29	28	57	29	28
SINGAPORE	7	3	4	7	3	4	7	3	4
SRI LANKA	21	13	8	21	13	8	21	13	8
THAILAND	41	12	29	41	12	29	41	12	29
UZBEKISTAN	1	-	1	-	-	-	-	-	-
<b>INDIAN OCEAN ISLANDS</b>	61	37	24	61	37	24	62	38	24
MAURITIUS	51	33	18	51	33	18	52	34	18
SEYCHELLES	10	4	6	10	4	6	10	4	6
<b>AFRICA</b>	2 472	1 551	921	2 487	1 558	929	2 428	1 532	896
ALGERIA	18	16	2	19	16	3	19	16	3
ANGOLA	15	9	6	16	10	6	15	9	6
BENIN	2	1	1	2	1	1	2	1	1
BOTSWANA	37	10	27	36	10	26	35	10	25
BURKINA FASO	1	1	-	1	1	-	1	1	-
BURUNDI	2	2	-	2	2	-	2	2	-
CAMEROON	54	43	11	54	43	11	54	43	11
CAPE VERDE ISLAND	1	1	-	1	1	-	1	1	-
COMOROS	1	1	-	1	1	-	1	1	-
CONGO	91	60	31	90	59	31	89	60	29
COTE D'IVOIRE	15	15	-	15	15	-	15	15	-

2. DOCUMENTED IMMIGRANTS  
2.4 COUNTRY OF PREVIOUS PERMANENT RESIDENCE AND GENDER (CONCLUDED)

COUNTRY	PREVIOUS PERMANENT RESIDENCE			BIRTH PLACE			CITIZENSHIP		
	TOTAL	MALE	FEMALE	TOTAL	MALE	FEMALE	TOTAL	MALE	FEMALE
DEM REP OF CONGO	30	15	15	30	15	15	30	15	15
EGYPT	53	44	9	53	44	9	52	44	8
ETHIOPIA	18	14	4	18	14	4	18	14	4
GABON	1	1	-	1	1	-	1	1	-
GHANA	202	131	71	202	131	71	202	131	71
GUINEA	10	4	6	9	4	5	9	4	5
KENYA	75	41	34	74	40	34	64	36	28
LESOTHO	123	27	96	122	27	95	123	27	96
MADAGASCAR	4	2	2	4	2	2	4	2	2
MADEIRA ISLAND	4	1	3	4	1	3	-	-	-
MALAWI	66	38	28	66	38	28	66	39	27
MALI	3	3	-	3	3	-	3	3	-
MOROCCO	56	49	7	56	49	7	55	48	7
MOZAMBIQUE	87	33	54	88	33	55	88	33	55
NAMIBIA	3	1	2	3	1	2	3	1	2
NIGERIA	631	562	69	631	562	69	631	561	70
RWANDA	10	6	4	10	6	4	11	6	5
SENEGAL	30	30	-	30	30	-	30	30	-
SIERRA LEONE	6	3	3	6	3	3	6	3	3
SOMALIA	5	5	-	5	5	-	5	5	-
SOUTH AFRICA	-	-	-	15	7	8	1	-	1
SUDAN	8	6	2	8	6	2	8	6	2
SWAZILAND	104	27	77	104	27	77	104	27	77
TUNISIA	4	3	1	4	3	1	4	3	1
UGANDA	111	64	47	110	63	47	110	64	46
UNITED REP OF TANZANIA	26	13	13	28	15	13	22	12	10
ZAIRE	30	15	15	30	15	15	30	15	15
ZAMBIA	101	44	57	102	45	57	94	42	52
ZIMBABWE	464	225	239	464	224	240	450	216	234
UNSPECIFIED	15	7	8	15	7	8	15	7	8



2. DOCUMENTED IMMIGRANTS  
 2.5 COUNTRY OF PREVIOUS PERMANENT RESIDENCE  
 BY MONTH OF ARRIVAL OR APPROVAL  
 2.5.1 TOTAL

COUNTRY	MONTH												
	TOTAL	JAN	FEB	MAR	APR	MAY	JUN	JUL	AUG	SEP	OCT	NOV	DEC
<b>TOTAL</b>	6 545	473	713	490	692	427	456	372	533	427	682	647	633
<b>OVERSEAS</b>	4 058	303	448	320	447	275	258	218	341	282	413	372	381
<b>EUROPE</b>	1 847	182	208	142	166	133	106	100	157	130	171	153	199
ALBANIA	4	-	-	-	1	-	-	-	2	-	-	-	1
AUSTRIA	11	1	-	1	1	-	1	-	3	2	1	-	1
BELARUS	2	-	-	-	-	2	-	-	-	-	-	-	-
BELGIUM	64	4	14	3	1	7	2	6	4	6	7	6	4
BULGARIA	149	19	17	10	8	9	8	15	12	15	9	13	14
CROATIA	5	-	2	-	1	-	1	-	-	-	1	-	-
CZECHOSLOVAKIA	6	1	1	-	1	-	-	-	1	1	-	1	-
DENMARK	22	1	2	-	1	3	1	1	1	1	-	6	5
ESTONIA	1	-	-	-	-	-	-	-	-	1	-	-	-
FINLAND	5	-	2	-	1	-	-	-	1	-	-	-	1
FRANCE	84	8	16	13	7	6	2	2	12	1	9	2	6
GERMANY	286	36	30	17	14	20	21	20	23	13	28	27	37
GREECE	6	2	-	-	-	1	-	1	1	-	-	1	-
HUNGARY	9	1	1	-	1	-	1	-	-	1	1	3	-
IRELAND	39	4	4	3	2	2	2	3	5	2	5	1	6
ITALY	51	3	1	5	7	1	1	5	2	1	8	8	9
LATVIA	2	-	-	-	-	-	-	-	-	-	-	2	-
LITHUANIA	8	1	-	-	-	-	-	-	1	-	6	-	-
MALTA	2	-	-	-	1	-	-	-	-	-	-	-	1
NETHERLANDS	92	8	10	10	7	11	5	1	6	4	10	12	8
NORWAY	6	1	-	-	2	-	-	-	-	-	1	1	1
POLAND	22	-	1	2	2	-	-	4	4	4	2	1	2
PORTUGAL	43	1	6	4	12	3	2	2	1	2	2	5	3
ROMANIA	38	2	5	4	4	1	2	1	1	3	4	3	8
RUSSIAN FEDERATION	77	2	7	5	14	10	10	5	3	5	3	5	8
SLOVAK REP	2	-	1	1	-	-	-	-	-	-	-	-	-
SLOVENIA	1	-	-	-	1	-	-	-	-	-	-	-	-

2. DOCUMENTED IMMIGRANTS  
 2.5 COUNTRY OF PREVIOUS PERMANENT RESIDENCE  
 BY MONTH OF ARRIVAL OR APPROVAL  
 2.5.1 TOTAL (CONTINUED)

COUNTRY	MONTH												
	TOTAL	JAN	FEB	MAR	APR	MAY	JUN	JUL	AUG	SEP	OCT	NOV	DEC
SPAIN	8	1	1	-	1	1	-	-	-	-	2	2	-
SWEDEN	14	3	1	1	1	-	1	1	1	1	-	-	4
SWITZERLAND	56	8	7	5	3	2	2	2	6	4	5	5	7
UK	668	71	73	53	66	49	41	28	57	63	61	40	66
UKRAINE	27	1	2	-	3	5	-	-	2	-	5	3	6
YUGOSLAVIA	37	3	4	5	3	-	3	3	8	-	1	6	1
<b>NORTH AMERICA</b>	184	15	20	16	25	20	3	9	15	6	19	19	17
CANADA	34	2	5	-	2	4	2	-	2	1	5	6	5
USA	150	13	15	16	23	16	1	9	13	5	14	13	12
<b>CENTRAL &amp; SOUTH AMERICA</b>	60	2	3	8	3	1	5	9	7	7	1	10	4
ARGENTINA	12	-	-	-	1	-	1	-	4	1	-	3	2
BRAZIL	22	1	2	7	-	1	2	6	-	-	1	2	-
CHILE	7	-	1	-	1	-	1	-	-	4	-	-	-
COLOMBIA	2	-	-	-	1	-	-	-	-	-	-	-	1
CUBA	5	1	-	-	-	-	1	-	-	1	-	2	-
ECUADOR	1	-	-	-	-	-	-	-	-	-	-	1	-
MEXICO	1	-	-	-	-	-	-	-	-	-	-	1	-
PERU	3	-	-	1	-	-	-	-	-	1	-	1	-
TRINIDAD AND TOBAGO	1	-	-	-	-	-	-	1	-	-	-	-	-
URUGUAY	1	-	-	-	-	-	-	-	-	-	-	-	1
VENEZUELA	5	-	-	-	-	-	-	2	3	-	-	-	-
<b>AUSTRALASIA</b>	65	6	7	1	7	7	9	4	2	3	3	3	13
AUSTRALIA	53	6	4	1	7	7	3	4	1	2	3	3	12
FIJI	1	-	-	-	-	-	1	-	-	-	-	-	-
NEW ZEALAND	11	-	3	-	-	-	5	-	1	1	-	-	1
<b>MIDDLE EAST</b>	103	9	15	5	11	5	15	1	2	7	13	11	9
CYPRUS	7	-	2	-	-	-	3	-	-	-	1	-	1
IRAN, ISLAMIC REP OF	22	3	3	1	5	-	2	-	-	-	1	6	1
IRAQ	2	-	-	-	-	-	-	-	1	-	1	-	-

2. DOCUMENTED IMMIGRANTS  
 2.5 COUNTRY OF PREVIOUS PERMANENT RESIDENCE  
 BY MONTH OF ARRIVAL OR APPROVAL  
 2.5.1 TOTAL (CONTINUED)

COUNTRY	MONTH												
	TOTAL	JAN	FEB	MAR	APR	MAY	JUN	JUL	AUG	SEP	OCT	NOV	DEC
ISRAEL	29	2	6	1	2	1	3	1	1	5	4	2	1
JORDAN	13	1	1	-	1	3	1	-	-	-	2	2	2
KUWAIT	1	-	-	-	-	-	1	-	-	-	-	-	-
LEBANON	8	3	1	1	-	-	2	-	-	-	1	-	-
SAUDI ARABIA	1	-	-	-	-	-	-	-	-	-	-	-	1
SYRIAN ARAB REP	2	-	-	-	1	-	-	-	-	-	-	-	1
TURKEY	17	-	2	2	2	1	3	-	-	2	2	1	2
YEMEN	1	-	-	-	-	-	-	-	-	-	1	-	-
<b>ASIA</b>	<b>1 738</b>	<b>87</b>	<b>188</b>	<b>146</b>	<b>220</b>	<b>108</b>	<b>118</b>	<b>89</b>	<b>151</b>	<b>125</b>	<b>200</b>	<b>170</b>	<b>136</b>
AFGHANISTAN	1	-	-	-	1	-	-	-	-	-	-	-	-
BANGLADESH	66	3	6	-	8	2	5	2	3	4	10	14	9
CHINA, PEOPLE'S REP OF	361	24	48	37	49	10	24	17	41	19	30	33	29
GEORGIA	4	-	-	-	-	-	-	-	-	-	-	-	4
HONG KONG	3	-	-	1	-	-	1	-	-	-	-	1	-
INDIA	608	16	65	69	70	37	45	23	48	41	89	62	43
INDONESIA	4	-	-	-	1	-	-	1	-	1	-	1	-
JAPAN	12	-	1	3	1	1	-	-	2	-	2	2	-
KAZAHSTAN	2	-	-	-	-	2	-	-	-	-	-	-	-
MALAYSIA	9	-	1	1	1	2	-	1	-	-	1	1	1
MONGOLIA	1	-	-	-	-	-	-	-	1	-	-	-	-
MYANMAR (BURMA)	12	1	-	-	-	4	-	3	-	-	4	-	-
NEPAL	10	-	-	-	-	-	-	-	4	-	2	-	4
PAKISTAN	345	21	41	17	47	16	18	22	28	41	28	42	24
PHILIPPINES	46	4	5	1	7	5	4	1	2	5	6	5	1
REP OF CHINA (TAIWAN)	127	9	8	3	24	17	11	7	14	7	13	4	10
REP OF KOREA	57	6	6	8	-	8	5	8	3	-	6	2	5
SINGAPORE	7	-	-	1	-	2	1	-	-	-	3	-	-
SRI LANKA	21	-	-	2	8	-	-	-	4	-	1	-	6
THAILAND	41	3	7	3	3	2	4	4	1	7	4	3	-
UZBEKISTAN	1	-	-	-	-	-	-	-	-	-	1	-	-

2. DOCUMENTED IMMIGRANTS  
 2.5 COUNTRY OF PREVIOUS PERMANENT RESIDENCE  
 BY MONTH OF ARRIVAL OR APPROVAL  
 2.5.1 TOTAL (CONTINUED)

COUNTRY	MONTH												
	TOTAL	JAN	FEB	MAR	APR	MAY	JUN	JUL	AUG	SEP	OCT	NOV	DEC
INDIAN OCEAN ISLANDS	61	2	7	2	15	1	2	6	7	4	6	6	3
MAURITIUS	51	2	7	2	15	1	1	1	7	4	6	2	3
SEYCHELLES	10	-	-	-	-	-	1	5	-	-	-	4	-
AFRICA	2 472	170	265	169	241	152	195	154	190	145	267	273	251
ALGERIA	18	1	2	1	1	4	2	-	-	-	4	-	3
ANGOLA	15	9	-	-	-	1	1	-	1	1	-	-	2
BENIN	2	-	-	-	-	-	1	-	-	-	-	1	-
BOTSWANA	37	4	2	4	1	1	3	3	6	2	1	3	7
BURKINA FASO	1	-	-	-	-	-	-	1	-	-	-	-	-
BURUNDI	2	-	-	1	-	-	-	-	-	-	-	-	1
CAMEROON	54	2	4	4	2	8	8	1	12	-	4	6	3
CAPE VERDE ISLAND	1	-	-	-	-	-	-	1	-	-	-	-	-
COMOROS	1	-	-	-	-	-	-	-	1	-	-	-	-
CONGO	91	3	19	3	11	2	5	2	4	11	6	13	12
COTE D'IVOIRE	15	-	1	-	-	-	3	2	2	3	-	1	3
DEM REP OF CONGO	30	-	3	-	2	-	-	-	9	-	5	6	5
EGYPT	53	7	3	6	9	5	-	2	5	5	4	4	3
ETHIOPIA	18	2	1	4	-	1	1	-	2	1	4	1	1
GABON	1	-	-	-	-	-	-	-	-	-	-	1	-
GHANA	202	11	23	16	14	16	16	5	8	22	40	14	17
GUINEA	10	-	-	-	1	-	-	7	-	-	-	-	2
KENYA	75	6	11	5	9	12	4	1	7	3	2	11	4
LESOTHO	123	10	15	10	14	3	12	5	14	12	3	11	14
MADAGASCAR	4	-	-	1	-	-	1	-	1	-	-	1	-
MADEIRA ISLAND	4	-	-	-	4	-	-	-	-	-	-	-	-
MALAWI	66	2	15	3	-	5	6	1	4	1	10	11	8
MALI	3	-	-	-	1	-	1	-	-	-	-	-	1
MOROCCO	56	7	4	5	7	4	3	2	3	4	4	5	8
MOZAMBIQUE	87	9	3	5	6	7	10	3	8	3	15	11	7
NAMIBIA	3	1	-	-	-	-	1	-	1	-	-	-	-
NIGERIA	631	32	56	29	78	38	46	6	45	31	38	91	79
RWANDA	10	-	1	-	-	7	-	-	-	-	-	2	-
SENEGAL	30	4	6	2	5	1	-	-	1	2	6	-	3

2. DOCUMENTED IMMIGRANTS  
 2.5 COUNTRY OF PREVIOUS PERMANENT RESIDENCE  
 BY MONTH OF ARRIVAL OR APPROVAL  
 2.5.1 TOTAL (CONCLUDED)

COUNTRY	MONTH												
	TOTAL	JAN	FEB	MAR	APR	MAY	JUN	JUL	AUG	SEP	OCT	NOV	DEC
SIERRA LEONE	6	-	-	-	-	6	-	-	-	-	-	-	-
SOMALIA	5	2	1	-	-	-	2	-	-	-	-	-	-
SUDAN	8	-	5	1	-	-	-	1	-	-	-	-	1
SWAZILAND	104	9	10	14	19	-	4	1	12	6	14	9	6
TUNISIA	4	1	1	-	-	-	-	-	-	-	2	-	-
UGANDA	111	2	19	10	16	4	3	2	3	3	28	21	-
UNITED REP OF TANZANIA	26	-	-	1	5	3	3	1	-	-	8	1	4
ZAIRE	30	-	3	-	2	-	-	-	9	-	5	6	5
ZAMBIA	101	14	12	14	5	1	12	1	3	11	11	5	12
ZIMBABWE	464	32	48	30	31	23	47	44	38	24	58	44	45
<b>UNSPECIFIED</b>	15	-	-	1	4	-	3	-	2	-	2	2	1

2. DOCUMENTED IMMIGRANTS  
 2.5 COUNTRY OF PREVIOUS PERMANENT RESIDENCE  
 BY MONTH OF ARRIVAL OR APPROVAL  
 2.5.2 APPROVED BEFORE ARRIVAL

COUNTRY	MONTH												
	TOTAL	JAN	FEB	MAR	APR	MAY	JUN	JUL	AUG	SEP	OCT	NOV	DEC
<b>TOTAL</b>	1 604	144	178	138	238	66	76	66	166	63	184	91	194
<b>OVERSEAS</b>	1 044	77	103	89	173	42	45	37	120	41	108	58	151
<b>EUROPE</b>	529	48	51	42	64	24	24	21	68	15	53	35	84
ALBANIA	2	-	-	-	1	-	-	-	1	-	-	-	-
AUSTRIA	4	-	-	-	1	-	-	-	3	-	-	-	-
BELGIUM	17	1	2	3	1	1	1	1	2	-	3	2	-
BULGARIA	16	4	4	1	-	-	1	-	1	1	2	-	2
DENMARK	13	-	1	-	1	1	-	-	-	-	-	6	4
FINLAND	3	-	-	-	1	-	-	-	1	-	-	-	1
FRANCE	33	5	5	1	5	1	2	1	9	-	-	1	3
GERMANY	93	8	7	8	9	7	7	5	9	2	4	9	18
GREECE	1	1	-	-	-	-	-	-	-	-	-	-	-
HUNGARY	1	-	-	-	-	-	-	-	-	-	-	1	-
IRELAND	17	3	2	1	-	1	-	3	3	1	2	-	1
ITALY	28	2	1	2	3	-	-	3	2	-	4	2	9
LITHUANIA	4	-	-	-	-	-	-	-	-	-	4	-	-
NETHERLANDS	24	-	4	-	1	1	1	-	1	1	6	4	5
NORWAY	2	1	-	-	-	-	-	-	-	-	1	-	-
POLAND	6	-	-	-	1	-	-	3	1	-	1	-	-
PORTUGAL	9	1	2	-	4	-	-	-	-	1	-	-	1
ROMANIA	3	-	-	-	1	-	-	-	-	-	-	-	2
RUSSIAN FEDERATION	15	-	3	-	5	1	1	1	-	-	2	1	1
SLOVAK REP	1	-	-	1	-	-	-	-	-	-	-	-	-
SPAIN	4	1	-	-	-	-	-	-	-	-	2	1	-
SWEDEN	5	1	-	-	-	-	1	-	1	-	-	-	2
SWITZERLAND	19	2	2	4	2	-	1	-	2	-	1	1	4
UK	193	17	17	18	28	11	8	4	26	9	18	7	30
UKRAINE	6	-	-	-	-	-	-	-	2	-	3	-	1
YUGOSLAVIA	10	1	1	3	-	-	1	-	4	-	-	-	-

2. DOCUMENTED IMMIGRANTS  
 2.5 COUNTRY OF PREVIOUS PERMANENT RESIDENCE  
 BY MONTH OF ARRIVAL OR APPROVAL  
 2.5.2 APPROVED BEFORE ARRIVAL (CONTINUED)

COUNTRY	MONTH												
	TOTAL	JAN	FEB	MAR	APR	MAY	JUN	JUL	AUG	SEP	OCT	NOV	DEC
<b>NORTH AMERICA</b>	66	6	7	5	13	5	2	1	7	-	11	6	3
CANADA	8	-	1	-	1	1	1	-	1	-	1	1	1
USA	58	6	6	5	12	4	1	1	6	-	10	5	2
<b>CENTRAL &amp; SOUTH AMERICA</b>	11	1	-	1	2	1	1	-	3	1	-	1	-
ARGENTINA	4	-	-	-	1	-	-	-	3	-	-	-	-
BRAZIL	3	1	-	-	-	1	-	-	-	-	-	1	-
CHILE	2	-	-	-	-	-	1	-	-	1	-	-	-
COLOMBIA	1	-	-	-	1	-	-	-	-	-	-	-	-
PERU	1	-	-	1	-	-	-	-	-	-	-	-	-
<b>AUSTRALASIA</b>	16	1	3	1	2	-	2	-	-	-	1	-	6
AUSTRALIA	13	1	2	1	2	-	1	-	-	-	1	-	5
NEW ZEALAND	3	-	1	-	-	-	1	-	-	-	-	-	1
<b>MIDDLE EAST</b>	30	-	8	2	5	-	1	-	1	5	5	1	2
CYPRUS	1	-	1	-	-	-	-	-	-	-	-	-	-
IRAN, ISLAMIC REP OF	6	-	2	-	3	-	-	-	-	-	1	-	-
IRAQ	1	-	-	-	-	-	-	-	1	-	-	-	-
ISRAEL	15	-	4	1	-	-	-	-	-	5	3	1	1
JORDAN	1	-	-	-	1	-	-	-	-	-	-	-	-
KUWAIT	1	-	-	-	-	-	1	-	-	-	-	-	-
LEBANON	2	-	1	1	-	-	-	-	-	-	-	-	-
TURKEY	2	-	-	-	1	-	-	-	-	-	-	-	1
YEMEN	1	-	-	-	-	-	-	-	-	-	1	-	-
<b>ASIA</b>	376	21	32	37	83	12	15	10	40	19	37	15	55
BANGLADESH	8	1	-	-	1	-	-	-	-	-	-	-	6
CHINA, PEOPLE'S REP OF	86	9	11	11	20	3	-	2	12	4	5	-	9
GEORGIA	4	-	-	-	-	-	-	-	-	-	-	-	4
INDIA	124	1	11	17	19	2	2	2	17	4	18	11	20
JAPAN	3	-	1	1	-	1	-	-	-	-	-	-	-

2. DOCUMENTED IMMIGRANTS  
 2.5 COUNTRY OF PREVIOUS PERMANENT RESIDENCE  
 BY MONTH OF ARRIVAL OR APPROVAL  
 2.5.2 APPROVED BEFORE ARRIVAL (CONTINUED)

COUNTRY	MONTH												
	TOTAL	JAN	FEB	MAR	APR	MAY	JUN	JUL	AUG	SEP	OCT	NOV	DEC
MALAYSIA	4	-	1	1	-	-	-	-	-	-	1	1	-
NEPAL	2	-	-	-	-	-	-	-	-	-	2	-	-
PAKISTAN	58	5	5	7	18	3	2	2	3	4	4	-	5
PHILIPPINES	3	-	1	-	2	-	-	-	-	-	-	-	-
REP OF CHINA (TAIWAN)	53	2	-	-	22	1	5	2	5	3	5	3	5
REP OF KOREA	14	3	-	-	-	1	5	1	3	-	1	-	-
SINGAPORE	2	-	-	-	-	-	1	-	-	-	1	-	-
SRI LANKA	7	-	-	-	1	-	-	-	-	-	-	-	6
THAILAND	8	-	2	-	-	1	-	1	-	4	-	-	-
<b>INDIAN OCEAN ISLANDS</b>	16	-	2	1	4	-	-	5	1	1	1	-	1
MAURITIUS	11	-	2	1	4	-	-	-	1	1	1	-	1
SEYCHELLES	5	-	-	-	-	-	-	5	-	-	-	-	-
<b>AFRICA</b>	559	67	75	49	64	24	31	29	46	22	76	33	43
ALGERIA	2	-	-	-	-	1	-	-	-	-	1	-	-
ANGOLA	2	1	-	-	-	-	1	-	-	-	-	-	-
BOTSWANA	16	3	1	3	1	-	1	1	3	1	1	-	1
BURUNDI	1	-	-	1	-	-	-	-	-	-	-	-	-
CAMEROON	5	-	2	-	-	1	-	-	-	-	-	2	-
CONGO	25	-	9	2	2	-	-	-	1	7	-	2	2
COTE D'IVOIRE	1	-	-	-	-	-	1	-	-	-	-	-	-
EGYPT	5	-	-	-	1	2	-	-	1	-	-	-	1
ETHIOPIA	5	-	-	3	-	-	-	-	-	-	1	-	1
GHANA	37	-	1	7	3	-	1	-	1	-	15	8	1
GUINEA	2	-	-	-	-	-	-	2	-	-	-	-	-
KENYA	16	1	2	2	1	2	-	-	1	1	1	3	2
LESOTHO	35	4	4	4	5	-	2	1	8	2	-	1	4
MADAGASCAR	2	-	-	-	-	-	-	-	1	-	-	1	-
MALAWI	17	2	6	-	-	-	-	1	-	-	5	3	-
MALI	1	-	-	-	-	-	-	-	-	-	-	-	1
MOROCCO	5	3	1	-	-	-	-	-	-	-	-	-	1
MOZAMBIQUE	17	3	-	2	-	-	-	-	3	1	7	1	-



2. DOCUMENTED IMMIGRANTS  
 2.5 COUNTRY OF PREVIOUS PERMANENT RESIDENCE  
 BY MONTH OF ARRIVAL OR APPROVAL  
 2.5.2 APPROVED BEFORE ARRIVAL (CONCLUDED)

COUNTRY	MONTH												
	TOTAL	JAN	FEB	MAR	APR	MAY	JUN	JUL	AUG	SEP	OCT	NOV	DEC
NAMIBIA	2	1	-	-	-	-	1	-	-	-	-	-	-
NIGERIA	76	13	5	-	13	6	2	12	4	2	10	3	6
RWANDA	2	-	-	-	-	1	-	-	-	-	-	1	-
SENEGAL	4	1	1	-	1	-	-	-	-	-	-	-	1
SWAZILAND	49	7	6	5	14	-	3	-	5	-	5	1	3
TUNISIA	1	1	-	-	-	-	-	-	-	-	-	-	-
UGANDA	27	1	6	2	5	1	-	-	1	-	10	1	-
UNITED REP OF TANZANIA	5	-	-	1	2	-	1	-	-	-	-	-	1
ZAMBIA	27	7	7	-	1	-	2	-	2	1	2	1	4
ZIMBABWE	172	19	24	17	15	10	16	12	15	7	18	5	14
<b>UNSPECIFIED</b>	1	-	-	-	1	-	-	-	-	-	-	-	-

2. DOCUMENTED IMMIGRANTS  
 2.5 COUNTRY OF PREVIOUS PERMANENT RESIDENCE  
 BY MONTH OF ARRIVAL OR APPROVAL  
 2.5.3 APPROVED AFTER ARRIVAL

COUNTRY	MONTH												
	TOTAL	JAN	FEB	MAR	APR	MAY	JUN	JUL	AUG	SEP	OCT	NOV	DEC
<b>TOTAL</b>	4 941	329	535	352	454	361	380	306	367	364	498	556	439
<b>OVERSEAS</b>	3 014	226	345	231	274	233	213	181	221	241	305	314	230
<b>EUROPE</b>	1 318	134	157	100	102	109	82	79	89	115	118	118	115
ALBANIA	2	-	-	-	-	-	-	-	1	-	-	-	1
AUSTRIA	7	1	-	1	-	-	1	-	-	2	1	-	1
BELARUS	2	-	-	-	-	2	-	-	-	-	-	-	-
BELGIUM	47	3	12	-	-	6	1	5	2	6	4	4	4
BULGARIA	133	15	13	9	8	9	7	15	11	14	7	13	12
CROATIA	5	-	2	-	1	-	1	-	-	-	1	-	-
CZECHOSLOVAKIA	6	1	1	-	1	-	-	-	1	1	-	1	-
DENMARK	9	1	1	-	-	2	1	1	1	1	-	-	1
ESTONIA	1	-	-	-	-	-	-	-	-	1	-	-	-
FINLAND	2	-	2	-	-	-	-	-	-	-	-	-	-
FRANCE	51	3	11	12	2	5	-	1	3	1	9	1	3
GERMANY	193	28	23	9	5	13	14	15	14	11	24	18	19
GREECE	5	1	-	-	-	1	-	1	1	-	-	1	-
HUNGARY	8	1	1	-	1	-	1	-	-	1	1	2	-
IRELAND	22	1	2	2	2	1	2	-	2	1	3	1	5
ITALY	23	1	-	3	4	1	1	2	-	1	4	6	-
LATVIA	2	-	-	-	-	-	-	-	-	-	-	2	-
LITHUANIA	4	1	-	-	-	-	-	-	1	-	2	-	-
MALTA	2	-	-	-	1	-	-	-	-	-	-	-	1
NETHERLANDS	68	8	6	10	6	10	4	1	5	3	4	8	3
NORWAY	4	-	-	-	2	-	-	-	-	-	-	1	1
POLAND	16	-	1	2	1	-	-	1	3	4	1	1	2
PORTUGAL	34	-	4	4	8	3	2	2	1	1	2	5	2
ROMANIA	35	2	5	4	3	1	2	1	1	3	4	3	6
RUSSIAN FEDERATION	62	2	4	5	9	9	9	4	3	5	1	4	7
SLOVAK REP	1	-	1	-	-	-	-	-	-	-	-	-	-
SLOVENIA	1	-	-	-	1	-	-	-	-	-	-	-	-

2. DOCUMENTED IMMIGRANTS  
 2.5 COUNTRY OF PREVIOUS PERMANENT RESIDENCE  
 BY MONTH OF ARRIVAL OR APPROVAL  
 2.5.3 APPROVED AFTER ARRIVAL (CONTINUED)

COUNTRY	MONTH												
	TOTAL	JAN	FEB	MAR	APR	MAY	JUN	JUL	AUG	SEP	OCT	NOV	DEC
SPAIN	4	-	1	-	1	1	-	-	-	-	-	1	-
SWEDEN	9	2	1	1	1	-	-	1	-	1	-	-	2
SWITZERLAND	37	6	5	1	1	2	1	2	4	4	4	4	3
UK	475	54	56	35	38	38	33	24	31	54	43	33	36
UKRAINE	21	1	2	-	3	5	-	-	-	-	2	3	5
YUGOSLAVIA	27	2	3	2	3	-	2	3	4	-	1	6	1
<b>NORTH AMERICA</b>	<b>118</b>	<b>9</b>	<b>13</b>	<b>11</b>	<b>12</b>	<b>15</b>	<b>1</b>	<b>8</b>	<b>8</b>	<b>6</b>	<b>8</b>	<b>13</b>	<b>14</b>
CANADA	26	2	4	-	1	3	1	-	1	1	4	5	4
USA	92	7	9	11	11	12	-	8	7	5	4	8	10
<b>CENTRAL &amp; SOUTH AMERICA</b>	<b>49</b>	<b>1</b>	<b>3</b>	<b>7</b>	<b>1</b>	<b>-</b>	<b>4</b>	<b>9</b>	<b>4</b>	<b>6</b>	<b>1</b>	<b>9</b>	<b>4</b>
ARGENTINA	8	-	-	-	-	-	1	-	1	1	-	3	2
BRAZIL	19	-	2	7	-	-	2	6	-	-	1	1	-
CHILE	5	-	1	-	1	-	-	-	-	3	-	-	-
COLOMBIA	1	-	-	-	-	-	-	-	-	-	-	-	1
CUBA	5	1	-	-	-	-	1	-	-	1	-	2	-
ECUADOR	1	-	-	-	-	-	-	-	-	-	-	1	-
MEXICO	1	-	-	-	-	-	-	-	-	-	-	1	-
PERU	2	-	-	-	-	-	-	-	-	1	-	1	-
TRINIDAD AND TOBAGO	1	-	-	-	-	-	-	1	-	-	-	-	-
URUGUAY	1	-	-	-	-	-	-	-	-	-	-	-	1
VENEZUELA	5	-	-	-	-	-	-	2	3	-	-	-	-
<b>AUSTRALASIA</b>	<b>49</b>	<b>5</b>	<b>4</b>	<b>-</b>	<b>5</b>	<b>7</b>	<b>7</b>	<b>4</b>	<b>2</b>	<b>3</b>	<b>2</b>	<b>3</b>	<b>7</b>
AUSTRALIA	40	5	2	-	5	7	2	4	1	2	2	3	7
FIJI	1	-	-	-	-	-	1	-	-	-	-	-	-
NEW ZEALAND	8	-	2	-	-	-	4	-	1	1	-	-	-
<b>MIDDLE EAST</b>	<b>73</b>	<b>9</b>	<b>7</b>	<b>3</b>	<b>6</b>	<b>5</b>	<b>14</b>	<b>1</b>	<b>1</b>	<b>2</b>	<b>8</b>	<b>10</b>	<b>7</b>
CYPRUS	6	-	1	-	-	-	3	-	-	-	1	-	1
IRAN, ISLAMIC REP OF	16	3	1	1	2	-	2	-	-	-	-	6	1
IRAQ	1	-	-	-	-	-	-	-	-	-	1	-	-

2. DOCUMENTED IMMIGRANTS  
 2.5 COUNTRY OF PREVIOUS PERMANENT RESIDENCE  
 BY MONTH OF ARRIVAL OR APPROVAL  
 2.5.3 APPROVED AFTER ARRIVAL (CONTINUED)

COUNTRY	MONTH												
	TOTAL	JAN	FEB	MAR	APR	MAY	JUN	JUL	AUG	SEP	OCT	NOV	DEC
ISRAEL	14	2	2	-	2	1	3	1	1	-	1	1	-
JORDAN	12	1	1	-	-	3	1	-	-	-	2	2	2
LEBANON	6	3	-	-	-	-	2	-	-	-	1	-	-
SAUDI ARABIA	1	-	-	-	-	-	-	-	-	-	-	-	1
SYRIAN ARAB REP	2	-	-	-	1	-	-	-	-	-	-	-	1
TURKEY	15	-	2	2	1	1	3	-	-	2	2	1	1
<b>ASIA</b>	<b>1 362</b>	<b>66</b>	<b>156</b>	<b>109</b>	<b>137</b>	<b>96</b>	<b>103</b>	<b>79</b>	<b>111</b>	<b>106</b>	<b>163</b>	<b>155</b>	<b>81</b>
AFGHANISTAN	1	-	-	-	1	-	-	-	-	-	-	-	-
BANGLADESH	58	2	6	-	7	2	5	2	3	4	10	14	3
CHINA, PEOPLE'S REP OF	275	15	37	26	29	7	24	15	29	15	25	33	20
HONG KONG	3	-	-	1	-	-	1	-	-	-	-	1	-
INDIA	484	15	54	52	51	35	43	21	31	37	71	51	23
INDONESIA	4	-	-	-	1	-	-	1	-	1	-	1	-
JAPAN	9	-	-	2	1	-	-	-	2	-	2	2	-
KAZAHSTAN	2	-	-	-	-	2	-	-	-	-	-	-	-
MALAYSIA	5	-	-	-	1	2	-	1	-	-	-	-	1
MONGOLIA	1	-	-	-	-	-	-	-	1	-	-	-	-
MYANMAR (BURMA)	12	1	-	-	-	4	-	3	-	-	4	-	-
NEPAL	8	-	-	-	-	-	-	-	4	-	-	-	4
PAKISTAN	287	16	36	10	29	13	16	20	25	37	24	42	19
PHILIPPINES	43	4	4	1	5	5	4	1	2	5	6	5	1
REP OF CHINA (TAIWAN)	74	7	8	3	2	16	6	5	9	4	8	1	5
REP OF KOREA	43	3	6	8	-	7	-	7	-	-	5	2	5
SINGAPORE	5	-	-	1	-	2	-	-	-	-	2	-	-
SRI LANKA	14	-	-	2	7	-	-	-	4	-	1	-	-
THAILAND	33	3	5	3	3	1	4	3	1	3	4	3	-
UZBEKISTAN	1	-	-	-	-	-	-	-	-	-	1	-	-
<b>INDIAN OCEAN ISLANDS</b>	<b>45</b>	<b>2</b>	<b>5</b>	<b>1</b>	<b>11</b>	<b>1</b>	<b>2</b>	<b>1</b>	<b>6</b>	<b>3</b>	<b>5</b>	<b>6</b>	<b>2</b>
MAURITIUS	40	2	5	1	11	1	1	1	6	3	5	2	2
SEYCHELLES	5	-	-	-	-	-	1	-	-	-	-	4	-

2. DOCUMENTED IMMIGRANTS  
 2.5 COUNTRY OF PREVIOUS PERMANENT RESIDENCE  
 BY MONTH OF ARRIVAL OR APPROVAL  
 2.5.3 APPROVED AFTER ARRIVAL (CONTINUED)

COUNTRY	MONTH												
	TOTAL	JAN	FEB	MAR	APR	MAY	JUN	JUL	AUG	SEP	OCT	NOV	DEC
<b>AFRICA</b>	1 913	103	190	120	177	128	164	125	144	123	191	240	208
ALGERIA	16	1	2	1	1	3	2	-	-	-	3	-	3
ANGOLA	13	8	-	-	-	1	-	-	1	1	-	-	2
BENIN	2	-	-	-	-	-	1	-	-	-	-	1	-
BOTSWANA	21	1	1	1	-	1	2	2	3	1	-	3	6
BURKINA FASO	1	-	-	-	-	-	-	1	-	-	-	-	-
BURUNDI	1	-	-	-	-	-	-	-	-	-	-	-	1
CAMEROON	49	2	2	4	2	7	8	1	12	-	4	4	3
CAPE VERDE ISLAND	1	-	-	-	-	-	-	1	-	-	-	-	-
COMOROS	1	-	-	-	-	-	-	-	1	-	-	-	-
CONGO	66	3	10	1	9	2	5	2	3	4	6	11	10
COTE D'IVOIRE	14	-	1	-	-	-	2	2	2	3	-	1	3
DEM REP OF CONGO	30	-	3	-	2	-	-	-	9	-	5	6	5
EGYPT	48	7	3	6	8	3	-	2	4	5	4	4	2
ETHIOPIA	13	2	1	1	-	1	1	-	2	1	3	1	-
GABON	1	-	-	-	-	-	-	-	-	-	-	1	-
GHANA	165	11	22	9	11	16	15	5	7	22	25	6	16
GUINEA	8	-	-	-	1	-	-	5	-	-	-	-	2
KENYA	59	5	9	3	8	10	4	1	6	2	1	8	2
LESOTHO	88	6	11	6	9	3	10	4	6	10	3	10	10
MADAGASCAR	2	-	-	1	-	-	1	-	-	-	-	-	-
MADEIRA ISLAND	4	-	-	-	4	-	-	-	-	-	-	-	-
MALAWI	49	-	9	3	-	5	6	-	4	1	5	8	8
MALI	2	-	-	-	1	-	1	-	-	-	-	-	-
MOROCCO	51	4	3	5	7	4	3	2	3	4	4	5	7
MOZAMBIQUE	70	6	3	3	6	7	10	3	5	2	8	10	7
NAMIBIA	1	-	-	-	-	-	-	-	1	-	-	-	-
NIGERIA	555	19	51	29	65	32	44	56	41	29	28	88	73
RWANDA	8	-	1	-	-	6	-	-	-	-	-	1	-
SENEGAL	26	3	5	2	4	1	-	-	1	2	6	-	2
SIERRA LEONE	6	-	-	-	-	6	-	-	-	-	-	-	-
SOMALIA	5	2	1	-	-	-	2	-	-	-	-	-	-

2. DOCUMENTED IMMIGRANTS  
 2.5 COUNTRY OF PREVIOUS PERMANENT RESIDENCE  
 BY MONTH OF ARRIVAL OR APPROVAL  
 2.5.3 APPROVED AFTER ARRIVAL (CONCLUDED)

COUNTRY	MONTH												
	TOTAL	JAN	FEB	MAR	APR	MAY	JUN	JUL	AUG	SEP	OCT	NOV	DEC
SUDAN	8	-	5	1	-	-	-	1	-	-	-	-	1
SWAZILAND	55	2	4	9	5	-	1	1	7	6	9	8	3
TUNISIA	3	-	1	-	-	-	-	-	-	-	2	-	-
UGANDA	84	1	13	8	11	3	3	2	2	3	18	20	-
UNITED REP OF TANZANIA	21	-	-	-	3	3	2	1	-	-	8	1	3
ZAIRE	30	-	3	-	2	-	-	-	9	-	5	6	5
ZAMBIA	74	7	5	14	4	1	10	1	1	10	9	4	8
ZIMBABWE	292	13	24	13	16	13	31	32	23	17	40	39	31
UNSPECIFIED	14	-	-	1	3	-	3	-	2	-	2	2	1

2. DOCUMENTED IMMIGRANTS  
 2.6 MODE OF TRAVEL AND PLACE OF ENTRY  
 2.6.1 APPROVED BEFORE ARRIVAL

MODE OF TRAVEL AND PLACE OF ENTRY	MONTH												
	TOTAL	JAN	FEB	MAR	APR	MAY	JUN	JUL	AUG	SEP	OCT	NOV	DEC
<b>TOTAL</b>	1 604	144	178	138	238	66	76	66	166	63	184	91	194
<b>AIR</b>													
<b>TOTAL</b>	1 171	91	120	95	176	47	58	52	116	47	147	69	153
CAPE TOWN	224	27	12	15	2	12	13	11	21	2	40	19	50
DURBAN	54	-	4	2	34	-	-	1	3	2	7	-	1
JOHANNESBURG	863	64	103	78	135	33	44	40	8	43	94	48	93
OTHER	30	-	1	-	5	2	1	-	4	-	6	2	9
<b>ROAD</b>													
<b>TOTAL</b>	433	53	58	43	62	19	18	14	50	16	37	22	41
BOTSWANA	63	4	9	4	12	7	-	-	8	2	1	11	5
LESOTHO	50	6	5	5	11	2	2	1	8	2	1	1	6
MOZAMBIQUE	34	4	7	3	3	-	-	1	4	1	8	2	1
SWAZILAND	101	14	11	12	22	1	3	2	13	2	9	1	11
ZIMBABWE	175	23	26	18	14	9	13	10	14	9	17	6	16
OTHER	10	2	-	1	-	-	-	-	3	-	1	1	2

3. SELF-DECLARED EMIGRANTS  
3.1 SINGLE AGES AND GENDER

AGE	TOTAL	MALE	FEMALE	UNSPEC.	AGE	TOTAL	MALE	FEMALE	UNSPEC.
<b>TOTAL</b>	10 890	5 196	5 666	28					
-1	61	28	33	-	30	405	189	216	-
1	110	55	54	1	31	379	154	224	1
2	99	44	55	-	32	374	163	210	1
3	110	54	56	-	33	314	134	180	-
4	113	58	55	-	34	306	136	170	-
-5	493	239	253	1	30-34	1 778	776	1 000	2
5	100	45	54	1	35	284	134	148	2
6	126	66	59	1	36	282	128	154	-
7	107	56	51	-	37	253	127	125	1
8	94	46	47	1	38	281	149	129	3
9	121	71	50	-	39	261	142	117	2
5-9	548	284	261	3	35-39	1 361	680	673	8
10	100	50	50	-	40	196	101	95	-
11	100	42	58	-	41	229	114	114	1
12	110	58	52	-	42	219	112	106	1
13	118	63	55	-	43	217	115	102	-
14	118	59	59	-	44	168	86	82	-
10-14	546	272	274	-	40-44	1 029	528	499	2
15	111	59	51	1	45	169	79	90	-
16	121	54	67	-	46	147	78	68	1
17	97	49	48	-	47	145	83	62	-
18	105	48	57	-	48	129	70	59	-
19	108	59	49	-	49	114	60	54	-
5-19	542	269	272	1	45-49	704	370	333	1
20	82	39	43	-	50	121	70	50	1
21	131	78	53	-	51	88	45	43	-
22	110	49	61	-	52	85	45	40	-
23	202	75	127	-	53	103	46	56	1
24	218	87	129	2	54	75	42	33	-
20-24	743	328	413	2	50-54	472	248	222	2
25	268	102	166	-	55	71	42	29	-
26	307	127	180	-	56	94	45	49	-
27	356	149	206	1	57	40	21	18	1
28	385	160	225	-	58	61	24	37	-
29	442	195	247	-	59	69	39	30	-
5-29	1 758	733	1 024	1	55-59	335	171	163	1



3. SELF-DECLARED EMIGRANTS  
3.1 SINGLE AGES AND GENDER (CONCLUDED)

AGE	TOTAL	MALE	FEMALE	UNSPEC.	AGE	TOTAL	MALE	FEMALE	UNSPEC.
60	45	21	24	-	70	18	9	9	-
61	41	22	19	-	71	8	4	4	-
62	30	20	9	1	72	17	6	11	-
63	34	16	17	1	73	16	8	8	-
64	34	20	14	-	74	20	10	10	-
0-64	184	99	83	2	70-74	79	37	42	-
65	45	23	22	-	75+	160	71	87	2
66	32	19	13	-					
67	36	20	16	-					
68	21	13	8	-					
69	24	16	8	-					
65-69	158	91	67	-					

3. SELF-DECLARED EMIGRANTS  
3.2 OCCUPATION BY GENDER AND AGE

OCCUPATION		TOTAL	-20	20-24	25-29	30-34	35-44	45-54	55-64	65+
<b>GRAND TOTAL</b>										
	T	10 890	2 129	743	1 758	1 778	2 390	1 176	519	397
	M	5 196	1 064	328	733	776	1 208	618	270	199
	F	5 666	1 060	413	1 024	1 000	1 172	555	246	196
	U	28	5	2	1	2	10	3	3	2
<b>TOTAL - ECONOMICALLY ACTIVE</b>										
	T	7 334	31	486	1 622	1 578	2 105	1 011	345	156
	M	3 840	17	214	699	768	1 203	613	230	96
	F	3 473	14	270	922	808	892	395	112	60
	U	21	-	2	1	2	10	3	3	-
PROFESSIONAL, SEMI-PROFESSIONAL AND TECHNICAL OCCUPATIONS										
	T	2 689	1	127	641	614	785	370	111	40
	M	1 398	-	70	295	311	417	208	72	25
	F	1 285	1	57	346	302	364	161	39	15
	U	6	-	-	-	1	4	1	-	-
ENGINEER, ENGINEERING TECHNICIAN, ARCHITECT AND RELATED OCCUPATION										
	T	464	-	22	95	101	133	79	18	16
	M	369	-	20	69	81	106	63	17	13
	F	93	-	2	26	20	26	15	1	3
	U	2	-	-	-	-	1	1	-	-
ENGINEER AND RELATED TECHNOLOGIST/TECHNICIAN										
	T	390	-	19	77	86	110	67	15	16
	M	319	-	18	57	73	91	53	14	13
	F	69	-	1	20	13	18	13	1	3
	U	2	-	-	-	-	1	1	-	-
INDUSTRIAL/PRODUCTION										
	T	31	-	1	7	-	9	7	3	4
	M	21	-	1	3	-	7	4	3	3
	F	8	-	-	4	-	1	2	-	1
	U	2	-	-	-	-	1	1	-	-
CHEMICAL										
	T	5	-	-	-	2	1	2	-	-
	M	4	-	-	-	1	1	2	-	-
	F	1	-	-	-	1	-	-	-	-
ELECTRICAL AND RELATED										
	T	7	-	1	2	2	-	1	1	-
	M	4	-	1	1	-	-	1	1	-
	F	3	-	-	1	2	-	-	-	-

3. SELF-DECLARED EMIGRANTS  
3.2 OCCUPATION BY GENDER AND AGE (CONTINUED)

OCCUPATION		TOTAL	-20	20-24	25-29	30-34	35-44	45-54	55-64	65+
MECHANICAL										
	T	3	-	1	1	-	1	-	-	-
	M	3	-	1	1	-	1	-	-	-
CIVIL AND RELATED										
	T	16	-	-	5	5	-	5	-	1
	M	13	-	-	3	5	-	4	-	1
	F	3	-	-	2	-	-	1	-	-
ENGINEER AND RELATED TECHNOLOGIST/TECHNICIAN NEC										
	T	328	-	16	62	77	99	52	11	11
	M	274	-	15	49	67	82	42	10	9
	F	54	-	1	13	10	17	10	1	2
TECHNICIAN: DRAFTSMAN										
	T	9	-	1	2	1	4	1	-	-
	M	7	-	1	2	-	3	1	-	-
	F	2	-	-	-	1	1	-	-	-
TECHNICAL INSPECTOR AND RELATED OCCUPATIONS										
	T	2	-	-	1	1	-	-	-	-
	M	1	-	-	-	1	-	-	-	-
	F	1	-	-	1	-	-	-	-	-
ARCHITECT AND RELATED OCCUPATIONS										
	T	44	-	2	9	8	15	8	2	-
	M	28	-	1	6	4	9	6	2	-
	F	16	-	1	3	4	6	2	-	-
LAND SURVEYOR AND RELATED OCCUPATIONS										
	T	19	-	-	6	5	4	3	1	-
	M	14	-	-	4	3	3	3	1	-
	F	5	-	-	2	2	1	-	-	-
NATURAL SCIENCE OCCUPATIONS										
	T	359	-	33	111	91	90	25	6	3
	M	240	-	20	71	59	65	20	4	1
	F	118	-	13	40	32	24	5	2	2
	U	1	-	-	-	-	1	-	-	-
PHYSICAL SCIENTIST AND RELATED OCCUPATIONS										
	T	4	-	-	-	1	2	-	-	1
	M	4	-	-	-	1	2	-	-	1

3. SELF-DECLARED EMIGRANTS  
3.2 OCCUPATION BY GENDER AND AGE (CONTINUED)

OCCUPATION		TOTAL	-20	20-24	25-29	30-34	35-44	45-54	55-64	65+
GEOLOGICAL SCIENCES OCCUPATIONS										
	T	5	-	-	1	-	-	2	2	-
	M	4	-	-	-	-	-	2	2	-
	F	1	-	-	1	-	-	-	-	-
MATHEMATICAL AND RELATED OCCUPATIONS										
	T	5	-	1	1	1	1	-	1	-
	M	5	-	1	1	1	1	-	1	-
COMPUTER SCIENCES OCCUPATIONS										
	T	254	-	27	87	64	67	8	-	1
	M	169	-	15	57	39	52	6	-	-
	F	85	-	12	30	25	15	2	-	1
CHEMICAL SCIENCES OCCUPATIONS										
	T	14	-	1	4	3	3	2	1	-
	M	3	-	-	1	1	-	1	-	-
	F	11	-	1	3	2	3	1	1	-
BIOLOGICAL SCIENCES OCCUPATIONS										
	T	9	-	-	3	2	1	2	1	-
	M	4	-	-	2	1	-	1	-	-
	F	5	-	-	1	1	1	1	1	-
AGRICULTURAL, FORESTRY AND FOOD SCIENCES OCCUPATIONS										
	T	5	-	1	-	1	2	-	-	1
	M	2	-	1	-	1	-	-	-	-
	F	2	-	-	-	-	1	-	-	1
	U	1	-	-	-	-	1	-	-	-
NATURAL SCIENCES TECHNOLOGIST										
	T	3	-	-	2	1	-	-	-	-
	M	3	-	-	2	1	-	-	-	-
NATURAL SCIENCES TECHNICIAN										
	T	60	-	3	13	18	14	11	1	-
	M	46	-	3	8	14	10	10	1	-
	F	14	-	-	5	4	4	1	-	-
MEDICAL, DENTAL AND RELATED HEALTH SERVICES OCCUPATIONS										
	T	447	-	7	80	102	152	79	23	4
	M	138	-	2	16	30	52	29	9	-
	F	307	-	5	64	71	99	50	14	4
	U	2	-	-	-	1	1	-	-	-

3. SELF-DECLARED EMIGRANTS  
3.2 OCCUPATION BY GENDER AND AGE (CONTINUED)

OCCUPATION		TOTAL	-20	20-24	25-29	30-34	35-44	45-54	55-64	65+
MEDICAL PRACTITIONER, PHYSICIAN										
	T	117	-	1	18	22	50	21	5	-
	M	69	-	1	7	7	31	18	5	-
	F	48	-	-	11	15	19	3	-	-
MEDICAL SPECIALIST										
	T	11	-	-	-	4	4	-	3	-
	M	6	-	-	-	4	2	-	-	-
	F	5	-	-	-	-	2	-	3	-
MEDICAL PROFESSIONS, NEC										
	T	11	-	1	3	5	1	1	-	-
	M	6	-	-	1	4	-	1	-	-
	F	5	-	1	2	1	1	-	-	-
DENTAL PROFESSIONS										
	T	14	-	-	3	3	3	4	1	-
	M	7	-	-	-	1	2	3	1	-
	F	7	-	-	3	2	1	1	-	-
VETERINARY SCIENCES PROFESSIONS										
	T	8	-	-	2	3	2	1	-	-
	M	5	-	-	1	2	1	1	-	-
	F	3	-	-	1	1	1	-	-	-
PHARMACEUTICAL PROFESSIONS										
	T	52	-	-	7	18	18	7	2	-
	M	22	-	-	3	5	8	4	2	-
	F	30	-	-	4	13	10	3	-	-
SUPPLEMENTARY MEDICAL PROFESSIONS										
	T	80	-	2	21	25	19	6	5	2
	M	10	-	-	2	4	2	1	1	-
	F	70	-	2	19	21	17	5	4	2
NURSING PROFESSIONS										
	T	135	-	1	20	17	52	37	6	2
	M	8	-	1	1	1	5	-	-	-
	F	125	-	-	19	15	46	37	6	2
	U	2	-	-	-	1	1	-	-	-
TECHNICIAN: MEDICAL AND RELATED SCIENCES										
	T	4	-	-	-	1	3	-	-	-
	M	1	-	-	-	-	1	-	-	-
	F	3	-	-	-	1	2	-	-	-

3. SELF-DECLARED EMIGRANTS  
3.2 OCCUPATION BY GENDER AND AGE (CONTINUED)

OCCUPATION		TOTAL	-20	20-24	25-29	30-34	35-44	45-54	55-64	65+
HEALTH SERVICES PROFESSIONS, NEC										
	T	15	-	2	6	4	-	2	1	-
	M	4	-	-	1	2	-	1	-	-
	F	11	-	2	5	2	-	1	1	-
EDUCATIONAL AND RELATED OCCUPATIONS										
	T	410	-	6	80	78	140	80	20	6
	M	110	-	1	14	19	43	22	8	3
	F	300	-	5	66	59	97	58	12	3
HUMANITIES AND RELATED OCCUPATIONS										
	T	735	1	3	188	188	208	79	34	6
	M	429	-	15	98	105	121	57	29	4
	F	306	1	16	90	83	87	22	5	2
LEGAL OCCUPATIONS										
	T	77	-	-	10	20	31	11	5	-
	M	50	-	-	6	14	18	7	5	-
	F	27	-	-	4	6	13	4	-	-
RELIGIOUS PROFESSIONS										
	T	35	-	-	2	8	12	5	4	4
	M	27	-	-	1	6	9	5	3	3
	F	8	-	-	1	2	3	-	1	1
SOCIAL SCIENCES OCCUPATIONS										
	T	52	-	3	8	11	19	8	3	-
	M	22	-	1	1	1	12	5	2	-
	F	30	-	2	7	10	7	3	1	-
PERSONNEL AND MANAGEMENT SERVICES OCCUPATIONS										
	T	18	-	2	8	2	3	2	-	1
	M	8	-	-	3	1	1	2	-	1
	F	10	-	2	5	1	2	-	-	-
ACCOUNTANT AND RELATED ACCOUNTING OCCUPATIONS										
	T	529	1	24	155	140	138	48	22	1
	M	309	-	12	83	80	80	35	19	-
	F	220	1	12	72	60	58	13	3	1
ECONOMIC OCCUPATIONS										
	T	14	-	1	4	4	2	3	-	-
	M	11	-	1	3	3	1	3	-	-
	F	3	-	-	1	1	1	-	-	-

3. SELF-DECLARED EMIGRANTS  
3.2 OCCUPATION BY GENDER AND AGE (CONTINUED)

OCCUPATION		TOTAL	-20	20-24	25-29	30-34	35-44	45-54	55-64	65+
HUMANITIES AND RELATED OCCUPATIONS, NEC										
	T	10	-	1	1	3	3	2	-	-
	M	2	-	1	1	-	-	-	-	-
	F	8	-	-	-	3	3	2	-	-
ART, SPORT AND ENTERTAINMENT OCCUPATIONS										
	T	274	-	28	87	54	62	28	10	5
	M	112	-	12	27	17	30	17	5	4
	F	161	-	16	60	37	31	11	5	1
	U	1	-	-	-	-	1	-	-	-
ARTIST, PLASTIC ARTS										
	T	11	-	-	9	1	1	-	-	-
	M	7	-	-	5	1	1	-	-	-
	F	4	-	-	4	-	-	-	-	-
DESIGNER										
	T	98	-	11	38	17	17	9	5	1
	M	22	-	2	8	2	4	3	2	1
	F	76	-	9	30	15	13	6	3	-
ARTIST, PERFORMING ARTS AND RELATED OCCUPATIONS										
	T	55	-	2	16	13	11	11	2	-
	M	25	-	2	4	6	3	8	2	-
	F	30	-	-	12	7	8	3	-	-
AUTHOR AND RELATED OCCUPATIONS										
	T	57	-	7	9	15	20	2	3	1
	M	26	-	2	3	5	12	2	1	1
	F	30	-	5	6	10	7	-	2	-
	U	1	-	-	-	-	1	-	-	-
SPORTS OCCUPATIONS										
	T	53	-	8	15	8	13	6	-	3
	M	32	-	6	7	3	10	4	-	2
	F	21	-	2	8	5	3	2	-	1
MANAGERIAL, EXECUTIVE AND ADMINISTRATIVE OCCUPATIONS										
	T	1 146	-	47	191	234	392	196	68	18
	M	760	-	23	91	144	278	151	57	16
	F	379	-	23	100	90	110	43	11	2
	U	7	-	1	-	-	4	2	-	-

3. SELF-DECLARED EMIGRANTS  
3.2 OCCUPATION BY GENDER AND AGE (CONTINUED)

OCCUPATION	TOTAL	-20	20-24	25-29	30-34	35-44	45-54	55-64	65+
LEGISLATIVE, EXECUTIVE AND MANAGERIAL OCCUPATIONS (GOVERNMENT SECTOR)									
T	46	-	3	12	6	12	7	3	3
M	19	-	1	3	1	6	3	3	2
F	27	-	2	9	5	6	4	-	1
MANAGERIAL OCCUPATIONS (EXCLUDING GOVERNMENT SECTOR)									
T	1 094	-	44	179	227	375	189	65	15
M	737	-	22	88	142	269	148	54	14
F	350	-	21	91	85	102	39	11	1
U	7	-	1	-	-	4	2	-	-
ADMINISTRATIVE OCCUPATIONS									
T	6	-	-	-	1	5	-	-	-
M	4	-	-	-	1	3	-	-	-
F	2	-	-	-	-	2	-	-	-
CLERICAL AND SALES OCCUPATIONS									
T	1 119	7	121	294	235	250	148	50	14
M	382	1	33	82	79	103	56	23	5
F	734	6	87	211	156	147	92	26	9
U	3	-	1	1	-	-	-	1	-
CLERICAL OCCUPATIONS									
T	596	2	77	166	114	126	84	21	6
M	112	-	16	25	25	24	19	3	-
F	482	2	60	141	89	102	65	17	6
U	2	-	1	-	-	-	-	1	-
SALES OCCUPATIONS									
T	523	5	44	128	121	124	64	29	8
M	270	1	17	57	54	79	37	20	5
F	252	4	27	70	67	45	27	9	3
U	1	-	-	1	-	-	-	-	-
TRANSPORT, DELIVERY AND COMMUNICATIONS OCCUPATIONS									
T	54	-	8	15	12	13	5	1	-
M	41	-	6	10	8	11	5	1	-
F	13	-	2	5	4	2	-	-	-
TRANSPORT OCCUPATIONS									
T	51	-	7	15	11	12	5	1	-
M	38	-	5	10	7	10	5	1	-
F	13	-	2	5	4	2	-	-	-



3. SELF-DECLARED EMIGRANTS  
3.2 OCCUPATION BY GENDER AND AGE (CONTINUED)

OCCUPATION		TOTAL	-20	20-24	25-29	30-34	35-44	45-54	55-64	65+
COMMUNICATIONS OCCUPATIONS										
	T	3	-	1	-	1	1	-	-	-
	M	3	-	1	-	1	1	-	-	-
SERVICE OCCUPATIONS										
	T	129	3	30	36	19	30	6	3	2
	M	73	3	15	16	13	17	5	2	2
	F	56	-	15	20	6	13	1	1	-
PROTECTIVE SERVICE OCCUPATIONS										
	T	33	1	6	11	2	8	3	1	1
	M	25	1	5	6	1	7	3	1	1
	F	8	-	1	5	1	1	-	-	-
CATERING AND ACCOMMODATION SERVICES OCCUPATIONS										
	T	47	2	13	13	8	9	1	-	1
	M	31	2	8	8	8	4	-	-	1
	F	16	-	5	5	-	5	1	-	-
PERSONAL AND RELATED SERVICES OCCUPATIONS										
	T	37	-	10	9	5	11	-	2	-
	M	11	-	2	2	2	4	-	1	-
	F	26	-	8	7	3	7	-	1	-
SERVICES OCCUPATIONS, NEC										
	T	12	-	1	3	4	2	2	-	-
	M	6	-	-	-	2	2	2	-	-
	F	6	-	1	3	2	-	-	-	-
FARMING AND RELATED OCCUPATIONS										
	T	25	-	1	4	4	8	5	2	1
	M	23	-	1	3	4	8	5	2	-
	F	2	-	-	1	-	-	-	-	1
FARMER, FARM MANAGER										
	T	24	-	1	4	4	7	5	2	1
	M	22	-	1	3	4	7	5	2	-
	F	2	-	-	1	-	-	-	-	1
FARMING AND RELATED OCCUPATIONS NEC										
	T	1	-	-	-	-	1	-	-	-
	M	1	-	-	-	-	1	-	-	-
ARTISAN, APPRENTICE AND RELATED OCCUPATIONS										
	T	253	2	8	39	47	95	37	9	6
	M	240	2	8	33	45	91	36	19	6

3. SELF-DECLARED EMIGRANTS  
3.2 OCCUPATION BY GENDER AND AGE (CONTINUED)

OCCUPATION		TOTAL	-20	20-24	25-29	30-34	35-44	45-54	55-64	65+
ARTISAN, APPRENTICE AND RELATED OCCUPATIONS										
	F	12	-	-	6	1	4	1	-	-
	?	1	-	-	-	1	-	-	-	-
ARTISAN										
	T	249	2	8	37	47	94	37	18	6
	M	238	2	8	32	45	91	36	18	6
	F	10	-	-	5	1	3	1	-	-
	?	1	-	-	-	1	-	-	-	-
APPRENTICE/TRAINEE										
	T	2	-	-	1	-	-	-	1	-
	M	1	-	-	-	-	-	-	1	-
	F	1	-	-	1	-	-	-	-	-
TRADE RELATED OCCUPATIONS										
	T	2	-	-	1	-	1	-	-	-
	M	1	-	-	1	-	-	-	-	-
	F	1	-	-	-	-	1	-	-	-
PRODUCTION SUPERVISOR, MINER, QUARRY AND RELATED WORKER										
	T	39	-	1	8	10	7	8	2	3
	M	28	-	-	6	9	7	5	1	-
	F	11	-	1	2	1	-	3	1	3
PRODUCTION FOREMAN/-SUPERVISOR										
	T	23	-	1	4	7	6	5	-	-
	M	19	-	-	2	6	6	5	-	-
	F	4	-	1	2	1	-	-	-	-
OPERATOR, PRODUCTION AND RELATED SEMI-SKILLED WORKER										
	T	14	-	-	2	3	1	3	2	3
	M	7	-	-	2	3	1	-	1	-
	F	7	-	-	-	-	-	3	1	3
LABOURER AND OTHER UNSKILLED WORKER NEC										
	T	2	-	-	2	-	-	-	-	-
	M	2	-	-	2	-	-	-	-	-
OCCUPATION UNSPECIFIED AND NEC										
	T	1 880	18	143	394	403	525	236	89	72
	M	895	11	58	163	155	271	142	53	42
	F	981	7	85	231	248	252	94	34	30
	U	4	-	-	-	-	2	-	2	-

3. SELF-DECLARED EMIGRANTS

3.2 OCCUPATION BY GENDER AND AGE (CONCLUDED)

OCCUPATION		TOTAL	-20	20-24	25-29	30-34	35-44	45-54	55-64	65+
<b>TOTAL - NOT ECONOMICALLY ACTIVE</b>										
	T	3 556	2 098	257	136	200	285	165	174	241
	M	1 356	1 047	114	34	8	5	5	40	103
	F	2 193	1 046	143	102	192	280	160	134	136
	U	7	5	-	-	-	-	-	-	2
HOMEMAKER										
	T	876	3	29	74	186	280	161	93	50
	M	10	1	-	2	1	4	1	1	-
	F	866	2	29	72	185	276	160	92	50
CHILD - NOT SCHOLAR/STUDENT										
	T	593	593	-	-	-	-	-	-	-
	M	284	284	-	-	-	-	-	-	-
	F	307	307	-	-	-	-	-	-	-
	U	2	2	-	-	-	-	-	-	-
SCHOLAR/STUDENT										
	T	1 798	1 502	227	61	8	-	-	-	-
	M	911	762	114	31	4	-	-	-	-
	F	884	737	113	30	4	-	-	-	-
	U	3	3	-	-	-	-	-	-	-
LABOUR DISABLED										
	T	1	-	1	-	-	-	-	-	-
	F	1	-	1	-	-	-	-	-	-
PENSIONER										
	T	267	-	-	-	-	-	-	78	189
	M	141	-	-	-	-	-	-	39	102
	F	124	-	-	-	-	-	-	39	85
	U	2	-	-	-	-	-	-	-	2
OTHER										
	T	21	-	-	1	6	5	4	3	2
	M	10	-	-	1	3	1	4	-	1
	F	11	-	-	-	3	4	-	3	1

3. SELF-DECLARED EMIGRANTS  
3.3 COUNTRY OF DESTINATION BY OCCUPATION

COUNTRY	OCCUPATIONAL GROUP											
	TOTAL	ECONO- MICALLY ACTIVE	PROF., SE- MI-PROF. AND TECH- NICAL	MANAGERIAL AND EXECUTIVE, AND ADMINI- STRATIVE	CLERICAL AND SALES	TRANSPORT AND DELIVERY AND COMMUNI- CATIONS	SERVICE	FARM- ING	ARTISAN AND APPREN- TICE	MINING, QUARRY- ING AND PRODUC- TION	NOT CLASSI- FIABLE AND UNSPEC.	NOT ECONO- MICALLY ACTIVE
<b>TOTAL</b>	10 890	7 334	2 689	1 146	1 119	54	129	25	253	39	1 880	3 556
<b>OVERSEAS</b>	9 318	6 215	2 353	805	971	48	117	14	237	35	1 635	3 103
<b>EUROPE</b>	4 637	3 352	1 259	457	583	24	79	4	81	22	843	1 285
AUSTRIA	25	16	4	1	4	-	-	-	-	-	7	9
BELGIUM	31	18	5	2	3	-	1	-	-	-	7	13
BULGARIA	1	1	1	-	-	-	-	-	-	-	-	-
CHANNEL ISLAND	3	1	-	-	1	-	-	-	-	-	-	2
CZECH REP	1	1	1	-	-	-	-	-	-	-	-	-
DENMARK	23	17	4	2	3	1	-	-	1	-	6	6
ESTONIA	1	1	1	-	-	-	-	-	-	-	-	-
FINLAND	3	2	-	-	-	-	-	-	-	-	2	1
FRANCE	51	43	13	5	4	1	-	-	-	-	20	8
GERMANY	210	147	43	7	22	1	3	-	4	1	66	63
GREECE	27	12	8	-	2	-	-	-	-	-	2	15
HUNGARY	3	1	1	-	-	-	-	-	-	-	-	2
ICELAND	2	2	-	-	-	-	-	-	1	-	1	-
IRELAND	159	104	45	16	9	-	5	-	2	-	27	55
ISLE OF MAN	3	3	2	-	1	-	-	-	-	-	-	-
ISLE OF WIGHT	1	1	-	-	-	-	-	-	-	-	1	-
ITALY	51	31	15	3	1	-	-	-	1	1	10	20
LUXEMBOURG	1	1	-	1	-	-	-	-	-	-	-	-
MALTA	1	1	1	-	-	-	-	-	-	-	-	-
NETHERLANDS	175	103	37	8	15	-	2	-	4	-	37	72
NORWAY	10	6	2	-	1	-	-	-	2	1	-	4
POLAND	5	5	2	-	-	-	-	-	-	-	3	-
PORTUGAL	54	27	4	4	2	-	-	-	-	1	16	27
RUSSIAN FEDERATION	5	5	2	1	-	-	-	-	-	-	2	-
SLOVAK REP	1	1	1	-	-	-	-	-	-	-	-	-
SPAIN	25	15	9	-	3	-	1	-	-	-	2	10
SWEDEN	25	16	6	4	-	-	1	-	-	1	4	9
SWITZERLAND	108	68	21	10	11	-	1	-	1	-	24	40
UK	3 626	2 699	1 029	393	501	21	65	4	65	17	604	927
UKRAINE	3	3	1	-	-	-	-	-	-	-	2	-
YUGOSLAVIA	3	1	1	-	-	-	-	-	-	-	-	2

3. SELF-DECLARED EMIGRANTS  
3.3 COUNTRY OF DESTINATION BY OCCUPATION (CONTINUED)

COUNTRY	OCCUPATIONAL GROUP											
	TOTAL	ECONO- MICALLY ACTIVE	PROF., SE- MI-PROF. AND TECH- NICAL	MANAGERIAL AND EXECUTIVE, AND ADMINI- STRATIVE	CLERICAL AND SALES	TRANSPORT DELIVERY AND COMMUNI- CATIONS	SERVICE	FARM- ING	ARTISAN AND APPREN- TICE	MINING, QUARRY- ING AND PRODUC- TION	NOT CLASSI- FIABLE AND UNSPEC.	NOT ECONO- MICALLY ACTIVE
<b>NORTH AMERICA</b>	1 430	911	381	112	117	6	13	1	28	5	248	519
CANADA	339	203	97	19	24	1	3	-	5	1	53	136
USA	1 091	708	284	93	93	5	10	1	23	4	195	383
<b>CENTRAL &amp; SOUTH AMERICA</b>	43	36	9	3	4	6	2	-	1	-	11	7
ARGENTINA	7	6	2	-	1	1	-	-	-	-	2	1
BARBADOS	1	-	-	-	-	-	-	-	-	-	-	1
BERMUDA	1	1	-	-	1	-	-	-	-	-	-	-
BRAZIL	12	11	4	1	1	-	2	-	-	-	3	1
CHILE	11	8	1	1	-	5	-	-	1	-	-	3
COLOMBIA	1	1	-	-	-	-	-	-	-	-	1	-
CUBA	3	3	1	-	-	-	-	-	-	-	2	-
ECUADOR	2	2	1	-	-	-	-	-	-	-	1	-
MEXICO	3	3	-	1	1	-	-	-	-	-	1	-
PERU	1	1	-	-	-	-	-	-	-	-	1	-
WEST INDIES	1	-	-	-	-	-	-	-	-	-	-	1
<b>AUSTRALASIA</b>	2 523	1 479	583	146	207	3	19	9	120	5	387	1 044
AUSTRALIA	1 580	929	373	105	124	-	12	4	80	2	229	651
COOK ISLAND	1	1	-	-	1	-	-	-	-	-	-	-
NEW ZEALAND	939	548	209	41	82	3	7	5	40	3	158	391
NIUE	2	1	1	-	-	-	-	-	-	-	-	1
PAPAU NEW GUINEA	1	-	-	-	-	-	-	-	-	-	-	1
<b>MIDDLE EAST</b>	323	194	61	32	22	5	2	-	3	-	69	129
BAHRAIN	14	7	5	1	-	-	-	-	-	-	1	7
CYPRUS	25	13	4	-	3	-	-	-	1	-	5	12
IRAN, ISLAMIC REP OF	1	-	-	-	-	-	-	-	-	-	-	1
ISRAEL	39	25	11	4	5	-	-	-	1	-	4	14
JORDAN	2	1	1	-	-	-	-	-	-	-	-	1
KUWAIT	2	2	1	-	1	-	-	-	-	-	-	-
LEBANON	2	1	1	-	-	-	-	-	-	-	-	1
OMAN	4	2	1	-	-	-	-	-	-	-	1	2

3. SELF-DECLARED EMIGRANTS  
3.3 COUNTRY OF DESTINATION BY OCCUPATION (CONTINUED)

COUNTRY	OCCUPATIONAL GROUP											
	TOTAL	ECONO- MICALLY ACTIVE	PROF., SE- MI-PROF. AND TECH- NICAL	MANAGERIAL AND EXECUTIVE, AND ADMINI- STRATIVE	CLERICAL AND SALES	TRANSPORT DELIVERY AND COMMUNI- CATIONS	SERVICE	FARM- ING	ARTISAN AND APPREN- TICE	MINING, QUARRY- ING AND PRODUC- TION	NOT CLASSI- FIABLE AND UNSPEC.	NOT ECONO- MICALLY ACTIVE
QATAR	7	4	1	-	-	-	-	-	-	3	3	
SAUDI ARABIA	84	43	15	9	5	-	-	1	-	13	41	
TURKEY	2	2	2	-	-	-	-	-	-	-	-	
UNITED ARAB EMIRATES	140	94	19	18	8	5	2	-	-	42	46	
YEMEN	1	-	-	-	-	-	-	-	-	-	1	
<b>ASIA</b>	218	155	40	29	28	2	1	-	2	1	54	63
BANGLADESH	5	3	1	1	1	-	-	-	-	-	2	
CHINA, PEOPLE'S REP OF	25	20	5	6	3	-	-	-	-	6	5	
HONG KONG	23	18	6	5	2	-	-	-	-	5	5	
INDIA	49	34	4	8	10	1	-	1	-	10	15	
INDONESIA	4	1	-	-	-	-	-	-	-	1	3	
JAPAN	16	12	5	1	2	-	-	-	-	4	4	
KOREA DEM PEOPLE'S REP OF	9	8	3	3	-	-	-	-	-	2	1	
MALAYSIA	3	2	-	-	-	-	-	-	1	1	1	
NEPAL	1	1	-	-	1	-	-	-	-	-	-	
PAKISTAN	14	13	-	1	5	1	-	-	-	6	1	
REP OF CHINA (TAIWAN)	28	21	9	-	2	-	1	-	-	9	7	
REP OF KOREA	3	3	2	-	-	-	-	-	-	1	-	
SINGAPORE	28	13	3	2	-	-	-	1	-	7	15	
SRI LANKA	3	-	-	-	-	-	-	-	-	-	3	
THAILAND	7	6	2	2	-	-	-	-	-	2	1	
<b>INDIAN OCEAN ISLANDS</b>	144	88	20	26	12	2	1	-	2	2	23	56
MAURITIUS	128	79	16	24	12	2	1	-	2	2	20	49
REUNION	8	4	1	1	-	-	-	-	-	2	4	
SEYCHELLES	8	5	3	1	-	-	-	-	-	1	3	
<b>AFRICA</b>	1 461	1 061	321	338	142	6	11	10	11	4	218	400
ALGERIA	1	1	1	-	-	-	-	-	-	-	-	
ANGOLA	22	16	6	2	4	-	-	-	-	4	6	
BENIN	1	-	-	-	-	-	-	-	-	-	1	
BOTSWANA	241	187	37	102	17	-	2	-	-	29	54	
BURUNDI	1	-	-	-	-	-	-	-	-	-	1	

3. SELF-DECLARED EMIGRANTS  
3.3 COUNTRY OF DESTINATION BY OCCUPATION (CONCLUDED)

COUNTRY	OCCUPATIONAL GROUP											
	TOTAL	ECONO- MICALLY ACTIVE	PROF., SE- MI-PROF. AND TECH- NICAL	MANAGERIAL AND EXECUTIVE, AND ADMINI- STRATIVE	CLERICAL AND SALES	TRANSPORT DELIVERY AND COMMUNI- CATIONS	SERVICE	FARM- ING	ARTISAN AND APPREN- TICE	MINING, QUARRY- ING AND PRODUC- TION	NOT CLASSI- FIABLE AND UNSPEC.	NOT ECONO- MICALLY ACTIVE
CAMEROON	2	2	2	-	-	-	-	-	-	-	-	-
CENTRAL AFRICAN REP	4	1	-	-	-	-	-	-	-	-	1	3
CHAD	2	2	1	1	-	-	-	-	-	-	-	-
COMOROS	1	-	-	-	-	-	-	-	-	-	-	1
CONGO	10	10	1	1	2	-	-	-	1	-	5	-
COTE D'IVOIRE	6	6	-	3	-	-	-	-	-	-	3	-
DEM REP OF CONGO	3	1	-	-	-	-	-	-	-	-	1	2
EGYPT	11	10	4	-	1	-	1	-	-	-	4	1
ETHIOPIA	9	9	2	1	3	-	-	-	-	-	3	-
GABON	8	7	3	1	-	-	-	-	-	-	3	1
GAMBIA	1	1	-	1	-	-	-	-	-	-	-	-
GHANA	19	17	12	4	-	-	-	-	-	-	1	2
KENYA	48	38	11	12	9	-	1	-	-	-	5	10
LESOTHO	7	7	3	-	4	-	-	-	-	-	-	-
LIBYAN ARAB JAMAHIRIYA	5	2	-	-	-	-	-	-	-	-	2	3
MADAGASCAR	4	3	1	1	-	-	-	-	-	-	1	1
MALAWI	62	36	6	11	8	-	-	-	-	-	11	26
MALI	1	1	1	-	-	-	-	-	-	-	-	-
MOROCCO	1	1	-	-	-	-	-	-	-	-	1	-
MOZAMBIQUE	37	29	10	7	6	-	-	-	1	-	5	8
NAMIBIA	448	346	139	85	39	3	4	2	7	3	64	02
NIGERIA	36	24	7	3	5	1	1	-	-	-	7	12
RWANDA	2	2	-	-	2	-	-	-	-	-	-	-
SIERRA LEONE	2	2	-	-	-	-	-	-	-	-	2	-
SWAZILAND	35	22	7	6	4	-	-	1	-	-	4	13
TOGO	1	1	-	-	1	-	-	-	-	-	-	-
UGANDA	19	16	9	3	1	-	1	-	-	-	2	3
UNITED REP OF TANZANIA	96	61	19	19	5	1	-	-	-	-	17	35
ZAIRE	3	1	-	-	-	-	-	-	-	-	1	2
ZAMBIA	187	117	26	39	16	-	1	6	2	1	26	70
ZIMBABWE	128	83	13	36	15	1	-	1	-	-	17	45
<b>UNSPECIFIED</b>	<b>111</b>	<b>58</b>	<b>15</b>	<b>3</b>	<b>6</b>	<b>-</b>	<b>1</b>	<b>1</b>	<b>5</b>	<b>-</b>	<b>27</b>	<b>53</b>

3. SELF-DECLARED EMIGRANTS

3.4 COUNTRY OF DESTINATION AND CITIZENSHIP BY GENDER

COUNTRY	DESTINATION				CITIZENSHIP			
	TOTAL	MALE	FEMALE	UNSPEC.	TOTAL	MALE	FEMALE	UNSPEC.
<b>TOTAL</b>	10 890	5 196	5 666	28	10 890	5 196	5 666	28
<b>OVERSEAS</b>	9 318	4 293	5 002	23	1 668	88	764	6
<b>EUROPE</b>	4 637	2 058	2 567	12	1 114	564	545	5
AUSTRIA	25	10	15	-	8	3	5	-
BELGIUM	31	14	15	2	18	12	4	2
BULGARIA	1	1	-	-	2	2	-	-
CHANNEL ISLAND	3	1	2	-	-	-	-	-
CZECH REP	1	1	-	-	-	-	-	-
DENMARK	23	14	9	-	11	9	2	-
ESTONIA	1	-	1	-	1	-	1	-
FINLAND	3	2	1	-	30	19	11	-
FRANCE	51	19	32	-	67	31	36	-
GERMANY	210	75	135	-	9	4	5	-
GREECE	27	9	18	-	2	2	-	-
HUNGARY	3	3	-	-	1	1	-	-
ICELAND	2	2	-	-	44	14	30	-
IRELAND	159	81	78	-	-	-	-	-
ISLE OF MAN	3	3	-	-	-	-	-	-
ISLE OF WIGHT	1	1	-	-	40	28	12	-
ITALY	51	28	23	-	-	-	-	-
LUXEMBOURG	1	1	-	-	1	-	1	-
MALTA	1	-	1	-	32	16	16	-
NETHERLANDS	175	58	117	-	1	-	1	-
NORWAY	10	4	6	-	4	2	2	-
POLAND	5	2	3	-	52	32	19	1
PORTUGAL	54	29	25	-	1	-	1	-
ROMANIA	-	-	-	-	3	2	1	-
RUSSIAN FEDERATION	5	2	3	-	1	1	-	-
SLOVAK REP	1	1	-	-	7	6	1	-
SPAIN	25	11	13	1	4	2	2	-
SWEDEN	25	16	8	1	21	11	10	-
SWITZERLAND	108	51	57	-	745	364	379	2
UK	3 626	1 616	2 002	8	6	3	3	-
UKRAINE	3	3	-	-	3	-	3	-
YUGOSLAVIA	3	-	3	-	-	-	-	-
<b>NORTH AMERICA</b>	1 430	641	787	2	134	75	59	-
CANADA	339	155	184	-	26	16	10	-
USA	1 091	486	603	2	108	59	49	-



3. SELF-DECLARED EMIGRANTS

3.4 COUNTRY OF DESTINATION AND CITIZENSHIP BY GENDER (CONTINUED)

COUNTRY	DESTINATION				CITIZENSHIP			
	TOTAL	MALE	FEMALE	UNSPEC.	TOTAL	MALE	FEMALE	UNSPEC.
<b>CENTRAL &amp; SOUTH AMERICA</b>	43	28	15	-	45	31	14	-
ANTIQUA AND BARBUDA					1	1	-	-
ARGENTINA	7	4	3	-	6	4	2	-
BARBADOS	1	-	1	-	1	1	-	-
BERMUDA	1	-	1	-	-	-	-	-
BRAZIL	12	10	2	-	11	9	2	-
CHILE	11	8	3	-	10	7	3	-
COLOMBIA	1	-	1	-	1	-	1	-
CUBA	3	2	1	-	4	3	1	-
ECUADOR	2	1	1	-	1	1	-	-
GUAYANA					4	2	2	-
MEXICO	3	1	2	-	3	1	2	-
PARAGUAY	-	-	-	-	1	1	-	-
PERU	1	1	-	-	2	1	1	-
WEST INDIES	1	1	-	-	-	-	-	-
<b>AUSTRALASIA</b>	2 523	1 213	1 302	8	132	65	66	1
AUSTRALIA	1 580	772	802	6	102	53	48	1
COOK ISLAND	1	1	-	-	-	-	-	-
NEW ZEALAND	939	440	497	2	30	12	18	-
NIUE	2	-	2	-	-	-	-	-
PAPAU NEW GUINEA	1	-	1	-	-	-	-	-
<b>MIDDLE EAST</b>	323	142	181	-	26	16	10	-
BAHRAIN	14	4	10	-	-	-	-	-
CYPRUS	25	11	14	-	6	3	3	-
IRAN, ISLAMIC REP OF	1	-	1	-	-	-	-	-
ISRAEL	39	21	18	-	7	7	-	-
JORDAN	2	1	1	-	-	-	-	-
KUWAIT	2	1	1	-	-	-	-	-
LEBANON	2	-	2	-	3	1	2	-
OMAN	4	1	3	-	-	-	-	-
QATAR	7	4	3	-	-	-	-	-
SAUDI ARABIA	84	35	49	-	8	3	5	-
TURKEY	2	1	1	-	2	2	-	-
UNITED ARAB EMIRATES	140	63	77	-	-	-	-	-
YEMEN	1	-	1	-	-	-	-	-

3. SELF-DECLARED EMIGRANTS

3.4 COUNTRY OF DESTINATION AND CITIZENSHIP BY GENDER (CONTINUED)

COUNTRY	DESTINATION				CITIZENSHIP			
	TOTAL	MALE	FEMALE	UNSPEC.	TOTAL	MALE	FEMALE	UNSPEC.
<b>ASIA</b>	218	134	83	1	154	108	46	-
BANGLADESH	5	3	2	-	5	4	1	-
CHINA, PEOPLE'S REP OF	25	20	5	-	18	16	2	-
HONG KONG	23	15	8	-	4	3	1	-
INDIA	49	33	16	-	62	39	23	-
INDONESIA	4	1	3	-	2	2	-	-
JAPAN	16	9	7	-	15	11	4	-
KOREA DEM PEOPLE'S REP OF	9	7	2	-	9	7	2	-
LAO, PEOPLES REP OF	-	-	-	-	1	-	1	-
MALAYSIA	3	-	3	-	5	2	3	-
NEPAL	1	1	-	-	1	1	-	-
PAKISTAN	14	13	1	-	16	14	2	-
PHILLIPINES	-	-	-	-	3	1	2	-
REP OF CHINA (TAIWAN)	28	14	13	1	9	5	4	-
REP OF KOREA	3	1	2	-	1	1	-	-
SINGAPORE	28	11	17	-	1	-	1	-
SRI LANKA	3	1	2	-	1	1	-	-
THAILAND	7	5	2	-	1	1	-	-
<b>INDIAN OCEAN ISLANDS</b>	144	77	67	-	63	39	24	-
MAURITIUS	128	68	60	-	59	37	22	-
REUNION	8	5	3	-	-	-	-	-
SEYCHELLES	8	4	4	-	4	2	2	-
<b>AFRICA</b>	1 461	848	608	5	9 222	4 298	4 902	22
ALGERIA	1	1	-	-	-	-	-	-
ANGOLA	22	13	9	-	13	8	5	-
BENIN	1	1	-	-	1	1	-	-
BOTSWANA	241	170	68	3	7	5	2	-
BURUNDI	1	-	1	-	1	-	1	-
CAMEROON	2	1	1	-	-	-	-	-
CENTRAL AFRICAN REP	4	2	2	-	-	-	-	-
CHAD	2	2	-	-	1	1	-	-
COMOROS	1	-	1	-	-	-	-	-
CONGO	10	9	1	-	7	6	1	-
COTE D'IVOIRE	6	4	2	-	2	2	-	-
DEM REP OF CONGO	3	2	1	-	1	1	-	-
EGYPT	11	10	1	-	9	7	2	-
ERITREA	-	-	-	-	1	1	-	-

3. SELF-DECLARED EMIGRANTS

3.4 COUNTRY OF DESTINATION AND CITIZENSHIP BY GENDER (CONCLUDED)

COUNTRY	DESTINATION				CITIZENSHIP			
	TOTAL	MALE	FEMALE	UNSPEC.	TOTAL	MALE	FEMALE	UNSPEC.
ETHIOPIA	9	7	2	-	8	7	1	-
GABON	8	7	1	-	2	2	-	-
GAMBIA	1	1	-	-	1	1	-	-
GHANA	19	15	4	-	18	15	3	-
KENYA	48	28	20	-	28	16	12	-
LESOTHO	7	2	5	-	6	1	5	-
LIBYAN ARAB JAMAHIRIYA	5	2	3	-	5	2	3	-
MADAGASCAR	4	4	-	-	1	1	-	-
MALAWI	62	31	31	-	8	5	3	-
MALI	1	1	-	-	1	1	-	-
MOROCCO	1	1	-	-	1	1	-	-
MOZAMBIQUE	37	23	14	-	17	10	7	-
NAMIBIA	448	253	195	-	45	26	19	-
NIGERIA	36	19	17	-	15	12	3	-
RWANDA	2	2	-	-	2	2	-	-
SAO TOME AND PRINCIPE	-	-	-	-	1	1	-	-
SENEGAL	-	-	-	-	1	1	-	-
SIERRA LEONE	2	2	-	-	2	2	-	-
SOUTH AFRICA	-	-	-	-	8 900	4 082	4 797	21
SWAZILAND	35	17	18	-	8	4	4	-
TOGO	1	1	-	-	1	1	-	-
UGANDA	19	12	7	-	19	12	7	-
UNITED REP OF TANZANIA	96	48	48	-	27	17	10	-
ZAIRE	3	2	1	-	1	1	-	-
ZAMBIA	187	92	94	1	38	27	10	1
ZIMBABWE	128	65	62	1	24	17	7	-
UNSPECIFIED	111	55	56	-	-	-	-	-

3. SELF-DECLARED EMIGRANTS

3.5 COUNTRY OF DESTINATION BY MONTH OF DEPARTURE

COUNTRY	MONTH												
	TOTAL	JAN	FEB	MAR	APR	MAY	JUN	JUL	AUG	SEP	OCT	NOV	DEC
<b>TOTAL</b>	10 890	2 061	1 252	854	1 151	900	670	535	657	640	617	681	872
<b>OVERSEAS</b>	9 318	1 839	1 080	744	1 005	742	561	473	567	528	501	548	730
<b>EUROPE</b>	4 637	829	467	375	543	395	322	236	266	272	246	274	412
AUSTRIA	25	1	2	7	3	1	2	-	1	3	1	-	4
BELGIUM	31	6	3	1	2	-	1	3	2	2	4	7	-
BULGARIA	1	-	-	-	-	-	-	-	-	-	-	-	1
CHANNEL ISLAND	3	1	-	2	-	-	-	-	-	-	-	-	-
CZECH REP	1	-	-	-	-	-	1	-	-	-	-	-	-
DENMARK	23	4	3	1	3	3	-	2	1	1	2	-	3
ESTONIA	1	-	-	-	-	-	-	-	-	-	-	-	1
FINLAND	3	-	-	-	-	1	-	-	1	-	-	-	1
FRANCE	51	7	2	2	7	9	1	6	2	2	2	1	10
GERMANY	210	40	22	14	21	14	18	14	16	15	8	7	21
GREECE	27	6	5	1	-	3	-	-	1	5	-	-	6
HUNGARY	3	3	-	-	-	-	-	-	-	-	-	-	-
ICELAND	2	-	-	-	-	1	-	-	-	-	1	-	-
IRELAND	159	43	16	5	22	19	6	5	7	4	11	8	13
ISLE OF MAN	3	-	-	-	-	-	-	-	-	-	2	-	1
ISLE OF WIGHT	1	-	-	-	-	1	-	-	-	-	-	-	-
ITALY	51	14	3	1	4	5	5	1	3	5	-	3	7
LUXEMBOURG	1	-	1	-	-	-	-	-	-	-	-	-	-
MALTA	1	-	-	-	-	1	-	-	-	-	-	-	-
NETHERLANDS	175	27	13	26	16	14	5	5	22	12	12	7	16
NORWAY	10	1	2	2	1	3	-	-	-	1	-	-	-
POLAND	5	-	2	-	-	1	-	1	1	-	-	-	-
PORTUGAL	54	5	-	-	4	10	6	4	4	3	9	-	9
RUSSIAN FEDERATION	5	-	-	-	1	2	-	1	-	-	-	-	1
SLOVAK REP	1	-	-	-	1	-	-	-	-	-	-	-	-
SPAIN	25	3	2	2	3	2	1	1	4	3	1	1	2
SWEDEN	25	1	4	2	1	3	9	1	1	-	-	1	2
SWITZERLAND	108	14	20	8	16	15	9	3	6	1	3	6	7
UK	3 626	653	367	301	438	285	258	189	194	212	190	233	306
UKRAINE	3	-	-	-	-	2	-	-	-	-	-	-	1
YUGOSLAVIA	3	-	-	-	-	-	-	-	-	3	-	-	-

3. SELF-DECLARED EMIGRANTS

3.5 COUNTRY OF DESTINATION BY MONTH OF DEPARTURE (CONTINUED)

COUNTRY	MONTH												
	TOTAL	JAN	FEB	MAR	APR	MAY	JUN	JUL	AUG	SEP	OCT	NOV	DEC
<b>NORTH AMERICA</b>	1 430	289	127	127	165	108	91	83	107	75	74	78	106
CANADA	339	51	35	31	42	32	25	17	31	15	19	21	20
USA	1 091	238	92	96	123	76	66	66	76	60	55	57	86
<b>CENTRAL &amp; SOUTH AMERICA</b>	43	4	8	6	4	4	1	4	3	-	3	4	2
ARGENTINA	7	2	3	-	1	-	-	-	-	-	-	1	-
BARBADOS	1	-	-	-	-	-	-	-	1	-	-	-	-
BERMUDA	1	-	1	-	-	-	-	-	-	-	-	-	-
BRAZIL	12	1	2	2	1	1	-	-	-	-	3	1	1
CHILE	11	-	2	4	-	1	-	2	2	-	-	-	-
COLOMBIA	1	-	-	-	-	-	-	1	-	-	-	-	-
CUBA	3	-	-	-	2	-	-	-	-	-	-	-	1
ECUADOR	2	-	-	-	-	-	-	1	-	-	-	1	-
MEXICO	3	1	-	-	-	2	-	-	-	-	-	-	-
PERU	1	-	-	-	-	-	-	-	-	-	-	1	-
WEST INDIES	1	-	-	-	-	-	1	-	-	-	-	-	-
<b>AUSTRALASIA</b>	2 523	620	408	182	237	183	111	126	115	129	138	159	115
AUSTRALIA	1 580	411	251	107	155	106	66	81	59	70	103	94	77
COOK ISLAND	1	-	-	-	-	-	-	-	-	1	-	-	-
NEW ZEALAND	939	209	157	75	82	77	43	45	56	58	35	64	38
NIUE	2	-	-	-	-	-	2	-	-	-	-	-	-
PAPAU NEW GUINEA	1	-	-	-	-	-	-	-	-	-	-	1	-
<b>MIDDLE EAST</b>	323	61	39	23	20	20	19	6	36	26	12	6	45
BAHRAIN	14	2	-	-	1	1	-	-	4	2	-	-	4
CYPRUS	25	7	12	-	1	1	-	1	1	1	-	-	1
IRAN, ISLAMIC REP OF	1	-	-	-	-	-	-	-	-	1	-	-	-
ISRAEL	39	2	1	2	7	3	4	2	2	2	3	1	10
JORDAN	2	-	2	-	-	-	-	-	-	-	-	-	-
KUWAIT	2	-	-	2	-	-	-	-	-	-	-	-	-
LEBANON	2	1	-	-	-	1	-	-	-	-	-	-	-
OMAN	4	-	2	-	-	-	-	-	-	1	-	-	1
QATAR	7	-	1	2	-	-	-	-	1	-	-	-	3
SAUDI ARABIA	84	29	15	7	5	3	1	-	7	3	2	5	7
TURKEY	2	-	-	-	-	-	-	-	-	-	-	1	1
UNITED ARAB EMIRATES	140	20	6	10	6	11	14	3	21	16	7	9	17
YEMEN	1	-	-	-	-	-	-	-	-	-	-	-	1

3. SELF-DECLARED EMIGRANTS  
3.5 COUNTRY OF DESTINATION BY MONTH OF DEPARTURE (CONTINUED)

COUNTRY	MONTH												
	TOTAL	JAN	FEB	MAR	APR	MAY	JUN	JUL	AUG	SEP	OCT	NOV	DEC
<b>ASIA</b>	218	20	21	16	19	22	7	12	22	16	18	10	35
BANGLADESH	5	2	-	-	-	-	-	-	-	-	1	-	2
CHINA, PEOPLE'S REP OF	25	1	3	1	5	-	-	-	-	2	9	2	2
HONG KONG	23	4	5	3	1	2	1	-	2	1	-	1	3
INDIA	49	3	2	5	4	7	1	2	2	4	2	2	15
INDONESIA	4	-	-	-	-	-	-	3	-	1	-	-	-
JAPAN	16	-	-	1	4	2	-	2	2	-	1	-	6
KOREA DEM PEOPLE'S REP OF	9	-	-	1	1	-	-	1	1	2	-	3	-
MALAYSIA	3	-	-	-	-	-	-	-	1	-	2	-	-
NEPAL	1	-	-	1	-	-	-	-	-	-	-	-	-
PAKISTAN	14	-	2	1	1	3	1	-	-	3	1	1	1
REP OF CHINA (TAIWAN)	28	1	7	2	1	1	1	-	9	2	-	-	4
REP OF KOREA	3	-	-	-	2	-	-	1	-	-	-	-	-
SINGAPORE	28	8	2	1	-	4	-	5	5	-	2	1	-
SRI LANKA	3	-	-	-	-	3	-	-	-	-	-	-	-
THAILAND	7	1	-	-	-	-	3	-	-	1	-	-	2
<b>INDIAN OCEAN ISLANDS</b>	144	16	10	15	17	10	10	6	18	10	10	7	15
MAURITIUS	128	15	10	14	15	10	8	6	13	7	10	7	13
REUNION	8	1	-	-	-	-	2	-	5	-	-	-	-
SEYCHELLES	8	-	-	1	2	-	-	-	-	3	-	-	2
<b>AFRICA</b>	1 461	196	168	104	137	150	102	55	77	103	106	126	137
ALGERIA	1	-	-	-	-	1	-	-	-	-	-	-	-
ANGOLA	22	2	4	-	1	1	4	-	1	1	1	3	4
BENIN	1	-	-	-	-	-	-	-	1	-	-	-	-
BOTSWANA	241	43	36	15	20	25	20	9	9	13	17	20	14
BURUNDI	1	-	-	-	-	-	-	-	-	1	-	-	-
CAMEROON	2	1	-	-	-	-	-	-	-	-	1	-	-
CENTRAL AFRICAN REP	4	-	-	-	-	-	4	-	-	-	-	-	-
CHAD	2	-	-	-	1	-	-	-	-	-	1	-	-
COMOROS	1	-	-	-	-	-	1	-	-	-	-	-	-
CONGO	10	1	1	-	1	3	-	-	-	-	2	1	1
COTE D'IVOIRE	6	-	-	-	1	-	2	-	-	1	-	-	2
DEM REP OF CONGO	3	-	-	2	-	-	-	-	-	-	-	1	-
EGYPT	11	1	-	1	-	1	3	-	-	3	1	-	1

3. SELF-DECLARED EMIGRANTS

3.5 COUNTRY OF DESTINATION BY MONTH OF DEPARTURE (CONCLUDED)

COUNTRY	MONTH												
	TOTAL	JAN	FEB	MAR	APR	MAY	JUN	JUL	AUG	SEP	OCT	NOV	DEC
ETHIOPIA	9	-	1	-	-	-	1	2	-	-	2	2	1
GABON	8	1	2	-	-	-	2	-	-	-	-	1	2
GAMBIA	1	-	1	-	-	-	-	-	-	-	-	-	-
GHANA	19	-	4	2	3	3	1	-	-	-	4	-	2
KENYA	48	8	8	2	2	5	2	-	2	1	6	4	8
LESOTHO	7	5	1	-	-	-	1	-	-	-	-	-	-
LIBYAN ARAB JAMAHIRIYA	5	-	-	-	-	-	-	3	-	-	-	-	2
MADAGASCAR	4	-	-	-	-	1	-	-	-	1	-	1	1
MALAWI	62	7	9	4	7	6	4	5	-	6	3	4	7
MALI	1	-	-	-	-	-	-	-	-	-	-	-	1
MOROCCO	1	-	-	-	-	-	-	-	1	-	-	-	-
MOZAMBIQUE	37	6	-	4	1	8	1	-	1	-	3	6	7
NAMIBIA	448	43	46	38	46	45	25	18	26	45	38	41	37
NIGERIA	36	13	1	1	8	8	1	-	2	1	-	1	-
RWANDA	2	-	-	-	-	-	-	-	-	1	-	1	-
SIERRA LEONE	2	-	-	-	-	-	-	1	-	-	-	-	1
SWAZILAND	35	7	3	2	4	6	3	2	2	2	3	1	-
TOGO	1	-	-	1	-	-	-	-	-	-	-	-	-
UGANDA	19	2	3	1	-	1	1	1	1	1	-	3	5
UNITED REP OF TANZANIA	96	19	20	4	4	5	4	2	6	4	8	7	13
ZAIRE	3	-	-	2	-	-	-	-	-	-	-	1	-
ZAMBIA	187	23	17	17	22	15	9	8	16	16	7	17	20
ZIMBABWE	128	14	11	10	16	16	13	4	9	6	9	12	8
UNSPECIFIED	111	26	4	6	9	8	7	7	13	9	10	7	5

3. SELF-DECLARED EMIGRANTS  
 3.6 COUNTRY OF DESTINATION BY GENDER  
 3.6.1 SA CITIZENS

COUNTRY	TOTAL	MALE	FEMALE	UNSPEC.
<b>TOTAL</b>	8 900	4 082	4 797	21
<b>OVERSEAS</b>	7 788	3 477	4 294	17
<b>EUROPE</b>	3 719	1 596	2 116	7
AUSTRIA	20	7	13	-
BELGIUM	19	6	13	-
CHANNEL ISLAND	2	1	1	-
CZECH REP	1	1	-	-
DENMARK	16	8	8	-
FINLAND	3	2	1	-
FRANCE	31	7	24	-
GERMANY	161	55	106	-
GREECE	18	4	14	-
HUNGARY	1	1	-	-
ICELAND	1	1	-	-
IRELAND	141	72	69	-
ISLE OF MAN	2	2	-	-
ISLE OF WIGHT	1	1	-	-
ITALY	29	12	17	-
LUXEMBOURG	1	1	-	-
NETHERLANDS	155	48	107	-
NORWAY	6	3	3	-
PORTUGAL	16	8	8	-
RUSSIAN FEDERATION	2	-	2	-
SPAIN	16	5	10	1
SWEDEN	22	14	7	1
SWITZERLAND	83	36	47	-
UK	2 971	1 300	1 666	5
UKRAINE	1	1	-	-
<b>NORTH AMERICA</b>	1 293	566	725	2
CANADA	307	138	169	-
USA	986	428	556	2
<b>CENTRAL &amp; SOUTH AMERICA</b>	11	6	5	-
ARGENTINA	1	-	1	-
BARBADOS	1	-	1	-
BERMUDA	1	-	1	-



3. EMIGRANTS  
 3.6 COUNTRY OF DESTINATION BY GENDER  
 3.6.1 SA CITIZENS (CONTINUED)

COUNTRY	TOTAL	MALE	FEMALE	UNSPEC.
BRAZIL	2	2	-	-
CHILE	4	3	1	-
ECUADOR	1	-	1	-
MEXICO	1	1	-	-
<b>AUSTRALASIA</b>	<b>2 316</b>	<b>1 116</b>	<b>1 193</b>	<b>7</b>
AUSTRALIA	1 420	696	719	5
COOK ISLAND	1	1	-	-
NEW ZEALAND	892	419	471	2
NIUE	2	-	2	-
PAPAU NEW GUINEA	1	-	1	-
<b>MIDDLE EAST</b>	<b>276</b>	<b>119</b>	<b>157</b>	<b>-</b>
BAHRAIN	10	3	7	-
CYPRUS	20	8	12	-
IRAN, ISLAMIC REP OF	1	-	1	-
ISRAEL	31	13	18	-
JORDAN	2	1	1	-
KUWAIT	2	1	1	-
LEBANON	1	-	1	-
OMAN	3	1	2	-
QATAR	7	4	3	-
SAUDI ARABIA	71	30	41	-
TURKEY	1	-	1	-
UNITED ARAB EMIRATES	126	58	68	-
YEMEN	1	-	1	-
<b>ASIA</b>	<b>99</b>	<b>42</b>	<b>56</b>	<b>1</b>
BANGLADESH	2	1	1	-
CHINA, PEOPLE'S REP OF	11	6	5	-
HONG KONG	14	9	5	-
INDIA	7	3	4	-
INDONESIA	3	-	3	-
JAPAN	4	-	4	-
KOREA DEM PEOPLE'S REP OF	1	-	1	-
MALAYSIA	1	-	1	-
PAKISTAN	1	-	1	-
REP OF CHINA (TAIWAN)	20	10	9	1
REP OF KOREA	3	1	2	-
SINGAPORE	24	7	17	-

3. SELF-DECLARED EMIGRANTS  
 3.6 COUNTRY OF DESTINATION BY GENDER  
 3.6.1 SA CITIZENS (CONCLUDED)

COUNTRY	TOTAL	MALE	FEMALE	UNSPEC.
SRI LANKA	3	1	2	-
THAILAND	5	4	1	-
<b>INDIAN OCEAN ISLANDS</b>	74	32	42	-
MAURITIUS	67	29	38	-
REUNION	1	-	1	-
SEYCHELLES	6	3	3	-
<b>AFRICA</b>	1 003	552	447	4
ALGERIA	1	1	-	-
ANGOLA	8	4	4	-
BOTSWANA	214	152	59	3
CAMEROON	2	1	1	-
COMOROS	1	-	1	-
CONGO	2	1	1	-
COTE D'IVOIRE	1	1	-	-
DEM REP OF CONGO	2	1	1	-
EGYPT	2	2	-	-
ETHIOPIA	2	1	1	-
GABON	3	3	-	-
GHANA	3	2	1	-
KENYA	15	6	9	-
LESOTHO	1	-	1	-
MALAWI	38	18	20	-
MOZAMBIQUE	15	10	5	-
NAMIBIA	376	212	164	-
NIGERIA	10	4	6	-
SWAZILAND	21	8	13	-
UGANDA	4	2	2	-
UNITED REP OF TANZANIA	58	26	32	-
ZAIRE	2	1	1	-
ZAMBIA	119	47	72	-
ZIMBABWE	105	50	54	1
<b>UNSPECIFIED</b>	109	53	56	-

**OTHER STATS SA REPORTS**

The following reports on tourism and migration have been published:

- No. 205 - South African residents travelling abroad 1952-1957
- No. 286 - Statistics of immigrants and emigrants 1924-1964
- No. 297 - Statistics of migration 1963 and earlier years
- No. 07-20-01 - External migration 1964
- No. 07-20-02 - External migration 1965
- No. 19-01-01 - Migration Statistics: Immigrants and Emigrants 1966 to 1969
- No. 19-02-01 - Migration Statistics: Tourists 1966 to 1969
- No. 19-01-02 - Migration Statistics: Tourists Immigrants and Emigrants 1970 and 1971
- No. 19-01-03 - Tourism and migration 1972-1975
- No. 19-01-04 - Tourism and migration 1976
- No. 19-01-05 - Tourism and migration 1977
- No. 19-01-06 - Tourism and migration 1978
- No. 19-01-07 - Tourism and migration 1979
- No. 19-01-08 - Tourism and migration 1980
- No. 19-01-09 - Tourism and migration 1981
- No. 19-01-10 - Tourism and migration 1982
- No. 19-01-11 - Tourism and migration 1983
- No. 19-01-12 - Tourism and migration 1984
- No. 19-01-13 - Tourism and migration 1985
- No. 19-01-14 - Tourism and migration 1986
- No. 03-51-01 (1987) - Tourism and migration
- No. 03-51-01 (1988) - Tourism and migration
- No. 03-51-01 (1989) - Tourism and migration
- No. 03-51-01 (1990) - Tourism and migration
- No. 03-51-01 (1991) - Tourism and migration
- No. 03-51-01 (1992) - Tourism and migration
- No. 03-51-01 (1993) - Tourism and migration
- No. 03-51-01 (1994) - Tourism and migration
- No. 03-51-01 (1995) - Tourism and migration
- No. 03-51-01 (1996) - Tourism and migration
- No. 03-51-03 (1997) - Documented migration
- No. 03-51-03 (1998) - Documented migration
- No. 03-51-03 (1999) - Documented migration
- No. 03-51-03 (2000) - Documented migration
- No. 03-51-03 (2001) - Documented migration