



stats sa

Department:
Statistics South Africa
REPUBLIC OF SOUTH AFRICA

Private Bag X44, Pretoria, 0001, South Africa, ISibalo House, Koch Street, Salvokop, Pretoria, 0002
www.statssa.gov.za, info@statssa.gov.za, Tel +27 12 310 8911

STATISTICAL RELEASE

P7162

Land transport (Preliminary)

October 2020

Embargoed until:
14 December 2020
11:30

ENQUIRIES:
Juan-Pierre Terblanche
(072) 901 1222

FORTHCOMING ISSUE:
November 2020

EXPECTED RELEASE DATE:
18 January 2021



Contents

Freight transportation: results for October 2020	2
Table A – Year-on-year percentage change in freight transportation (income at current prices).....	2
Table B – Freight transportation income at current prices for the latest three months by type of commodity.....	2
Figure 1 – Freight transportation: year-on-year percentage change in payload.....	3
Table C – Seasonally adjusted payload for the latest three months by type of transport.....	3
Passenger transportation: results for October 2020	4
Table D – Year-on-year percentage change in passenger transportation (income at current prices).....	4
Figure 2 – Passenger transportation: year-on-year percentage change in passenger journeys.....	4
Table E – Seasonally adjusted passenger journeys for the latest three months by type of transport.....	4
Tables	5
Table 1 – Freight transportation (income at current prices).....	5
Table 2 – Year-on-year percentage change in freight transportation (income at current prices)	5
Table 3 – Seasonally adjusted freight transportation (income at current prices).....	6
Table 4 – Month-on-month percentage change in seasonally adjusted freight transportation (income at current prices)	6
Table 5 – Freight transportation income at current prices by type of commodity (R million).....	7
Table 6 – Year-on-year percentage change in freight transportation income at current prices by type of commodity	7
Table 7 – Contribution of each type of commodity to the year-on-year percentage change in freight transportation income at current prices (percentage points)	7
Table 8 – Passenger transportation (income at current prices).....	8
Table 9 – Year-on-year percentage change in passenger transportation (income at current prices)	8
Table 10 – Seasonally adjusted passenger transportation (income at current prices).....	9
Table 11 – Month-on-month percentage change in seasonally adjusted passenger transportation (income at current prices)	9
Survey information	10
Technical notes.....	11
Glossary	12
Technical enquiries	12
General information.....	13

Freight transportation: results for October 2020

Table A – Year-on-year percentage change in freight transportation (income at current prices)

	May-20	Jun-20	Jul-20	Aug-20	Sep-20	Oct-20
Freight payload	-22,5	-18,6	-10,5	-11,9	-6,0	-9,4
Freight income	-22,2	-15,9	-8,0	-8,9	-5,8	-8,2

The volume of goods transported (payload) decreased by 9,4% in October 2020 compared with October 2019. The corresponding income decreased by 8,2% over the same period.

Table B – Freight transportation income at current prices for the latest three months by type of commodity

Type of commodity	Aug – Oct 2019 (R million)	Weight	Aug – Oct 2020 (R million)	% change between Aug – Oct 2019 and Aug – Oct 2020	Contribution (% points) to the total % change
Agriculture and forestry primary products	2 974	6,9	2 955	-0,6	0,0
Primary mining and quarrying products	15 099	35,0	15 227	0,8	0,3
Manufactured food, beverages and tobacco products	4 837	11,2	3 749	-22,5	-2,5
Textiles, clothing and leather goods	681	1,6	674	-1,0	0,0
Chemicals, coke, petroleum, rubber, plastic and other mineral products	2 908	6,7	2 692	-7,4	-0,5
Basic metals and fabricated metal products	1 068	2,5	805	-24,6	-0,6
Non-metallic products	872	2,0	746	-14,4	-0,3
Electrical machinery, transport machinery and equipment	657	1,5	508	-22,7	-0,3
Motor vehicles, parts and accessories	977	2,3	847	-13,3	-0,3
Paper and paper products	320	0,7	256	-20,0	-0,1
Commercial products	866	2,0	801	-7,5	-0,2
Used household and office products	697	1,6	516	-26,0	-0,4
Containers	2 407	5,6	1 978	-17,8	-1,0
Parcels	938	2,2	930	-0,9	0,0
Other freight	7 790	18,1	7 104	-8,8	-1,6
Total income	43 089	100,0	39 788	-7,7	-7,7

Income from freight transportation decreased by 7,7% in the three months ended October 2020 compared with the three months ended October 2019. The main negative contributors to this decrease were:

- manufactured food, beverages and tobacco products (-22,5% and contributing -2,5 percentage points);
- 'other' freight (-8,8% and contributing -1,6 percentage points); and
- containers (-17,8% and contributing -1,0 percentage point) – see Table B.

Figure 1 – Freight transportation: year-on-year percentage change in payload

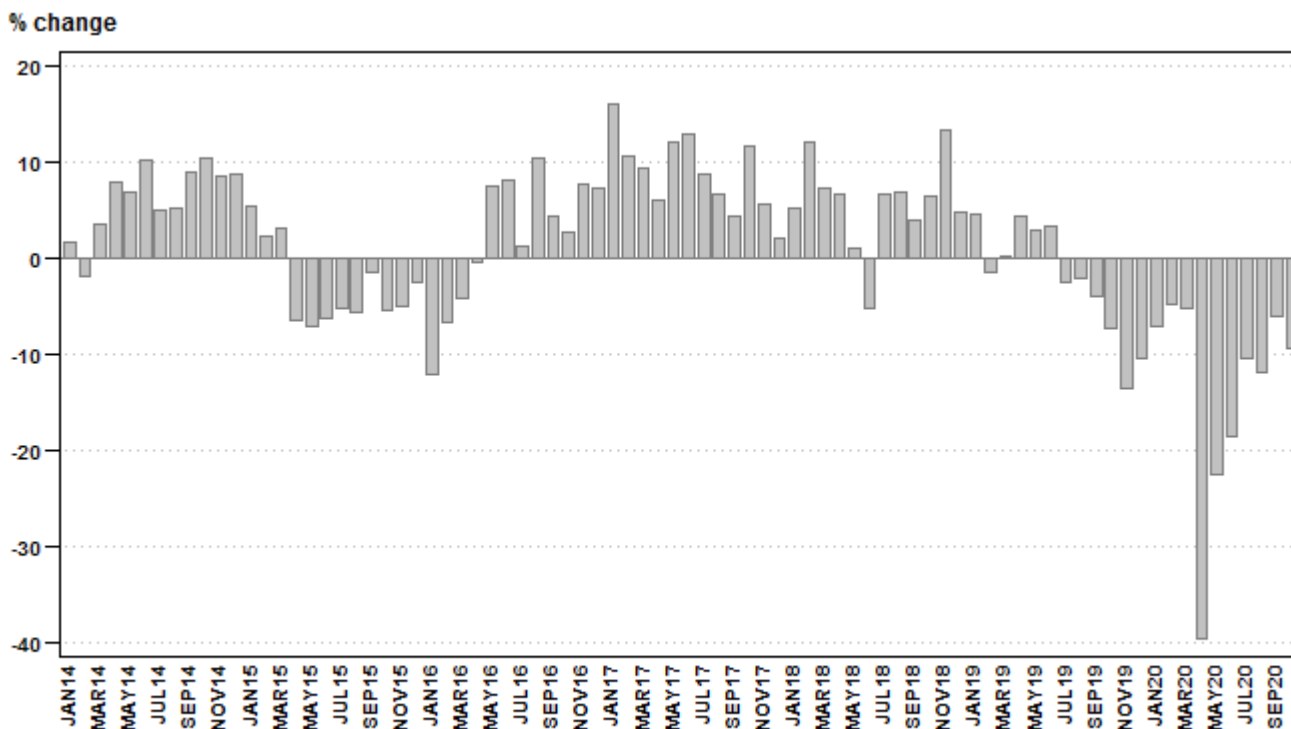


Table C – Seasonally adjusted payload for the latest three months by type of transport

Payload	May – Jul 2020 (000 tons)	Weight	Aug – Oct 2020 (000 tons)	% change between May – Jul 2020 and Aug – Oct 2020	Contribution (% points) to the total % change
Rail	47 479	24,8	49 119	3,5	0,9
Road	144 019	75,2	157 029	9,0	6,8
Total	191 497	100,0	206 148	7,7	7,7

Seasonally adjusted payload increased by 7,7% in the three months ended October 2020 compared with the previous three months. Road freight increased by 9,0% (contributing 6,8 percentage points) and rail freight increased by 3,5% (contributing 0,9 of a percentage point) – see Table C.

Passenger transportation: results for October 2020

Table D – Year-on-year percentage change in passenger transportation (income at current prices)

	May-20	Jun-20	Jul-20	Aug-20	Sep-20	Oct-20
Passenger journeys	-71,0	-62,5	-62,5	-62,1	-54,0	-55,5
Passenger income	-66,6	-57,8	-54,8	-53,3	-45,5	-45,5

The number of passenger journeys decreased by 55,5% in October 2020 compared with October 2019. The corresponding income decreased by 45,5% over the same period.

Figure 2 – Passenger transportation: year-on-year percentage change in passenger journeys

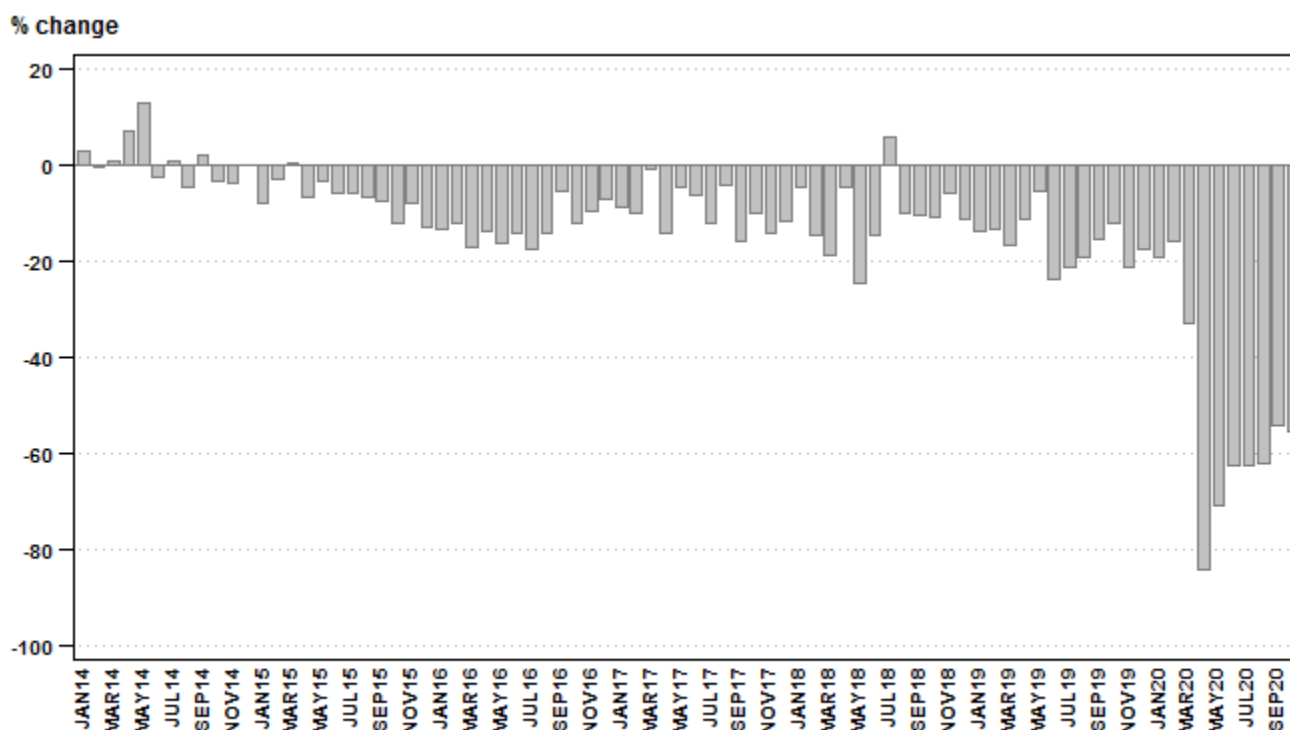


Table E – Seasonally adjusted passenger journeys for the latest three months by type of transport

Passenger journeys	May – Jul 2020 (000)	Weight	Aug – Oct 2020 (000)	% change between May – Jul 2020 and Aug – Oct 2020	Contribution (% points) to the total % change
Rail	463	1,2	1 175	153,8	1,8
Road	38 012	98,8	48 896	28,6	28,3
Total	38 474	100,0	50 069	30,1	30,1

Seasonally adjusted passenger journeys increased by 30,1% in the three months ended October 2020 compared with the previous three months. Road passenger journeys increased by 28,6% (contributing 28,3 percentage points) and rail passenger journeys increased by 153,8% (contributing 1,8 percentage points) – see Table E.

Risenga Maluleke
Statistician-General

Tables

Table 1 – Freight transportation (income at current prices)

Year and month 1/		Rail		Road		Total	
		Payload (000 tons)	Income (R million)	Payload (000 tons)	Income (R million)	Payload (000 tons)	Income (R million)
2019	Jan	18 652	3 660	55 214	9 575	73 866	13 235
	Feb	18 538	3 686	56 147	9 719	74 685	13 405
	Mar	17 017	3 331	58 422	9 924	75 439	13 255
	Apr	18 999	3 890	57 594	9 993	76 593	13 882
	May	18 322	3 796	59 844	10 308	78 166	14 104
	Jun	18 992	3 845	59 479	10 262	78 470	14 106
	Jul	15 265	3 219	61 169	10 485	76 433	13 704
	Aug	19 164	3 862	62 344	10 765	81 507	14 627
	Sep	19 456	4 010	57 865	10 090	77 321	14 100
	Oct	16 106	3 483	61 542	10 878	77 648	14 362
	Nov	18 685	3 881	58 795	10 535	77 480	14 415
	Dec	16 544	3 470	48 557	8 991	65 100	12 461
	Total	215 740	44 133	696 972	121 525	912 708	165 656
2020	Jan	17 219	3 561	51 315	9 225	68 534	12 786
	Feb	17 550	3 611	53 467	9 505	71 017	13 116
	Mar	17 832	3 614	53 575	9 625	71 406	13 238
	Apr	10 887	2 062	35 326	5 979	46 212	8 041
	May	14 141	2 930	46 423	8 044	60 564	10 974
	Jun	15 795	3 345	48 093	8 517	63 888	11 862
	Jul	16 089	3 395	52 332	9 216	68 421	12 612
	Aug	17 666	3 772	54 105	9 547	71 771	13 319
	Sep	17 722	3 635	54 922	9 650	72 645	13 285
	Oct	14 737	3 295	55 622	9 889	70 358	13 184

1/ Figures for the latest month are preliminary.

Table 2 – Year-on-year percentage change in freight transportation (income at current prices)

Year and month		Rail		Road		Total	
		Payload	Income	Payload	Income	Payload	Income
2019	Jan	5,6	8,0	4,3	6,2	4,6	6,7
	Feb	-6,7	-1,5	0,5	4,5	-1,4	2,8
	Mar	-6,6	-1,3	2,4	3,4	0,2	2,2
	Apr	2,5	6,5	4,9	6,6	4,3	6,6
	May	1,0	5,4	3,6	3,5	3,0	4,0
	Jun	3,8	5,7	3,2	3,6	3,4	4,2
	Jul	-3,3	2,4	-2,5	-1,3	-2,6	-0,5
	Aug	-1,4	2,8	-2,2	-0,3	-2,0	0,5
	Sep	-2,1	2,5	-4,5	-3,6	-3,9	-1,9
	Oct	-5,9	0,0	-7,8	-5,6	-7,4	-4,3
	Nov	-5,5	-1,5	-15,9	-11,9	-13,6	-9,3
	Dec	6,2	10,7	-14,9	-9,3	-10,4	-4,5
	Total	-1,2	3,2	-2,8	-0,7	-2,4	0,3
2020	Jan	-7,7	-2,7	-7,1	-3,7	-7,2	-3,4
	Feb	-5,3	-2,0	-4,8	-2,2	-4,9	-2,2
	Mar	4,8	8,5	-8,3	-3,0	-5,3	-0,1
	Apr	-42,7	-47,0	-38,7	-40,2	-39,7	-42,1
	May	-22,8	-22,8	-22,4	-22,0	-22,5	-22,2
	Jun	-16,8	-13,0	-19,1	-17,0	-18,6	-15,9
	Jul	5,4	5,5	-14,4	-12,1	-10,5	-8,0
	Aug	-7,8	-2,3	-13,2	-11,3	-11,9	-8,9
	Sep	-8,9	-9,4	-5,1	-4,4	-6,0	-5,8
	Oct	-8,5	-5,4	-9,6	-9,1	-9,4	-8,2

Table 3 – Seasonally adjusted freight transportation (income at current prices)

Year and month		Rail		Road		Total	
		Payload (000 tons)	Income (R million)	Payload (000 tons)	Income (R million)	Payload (000 tons)	Income (R million)
2019	Jan	19 325	3 777	59 903	10 388	79 229	14 165
	Feb	18 049	3 654	59 634	10 306	77 682	13 960
	Mar	17 588	3 549	59 487	10 188	77 075	13 737
	Apr	18 714	3 733	60 391	10 450	79 104	14 182
	May	18 534	3 797	58 775	10 081	77 310	13 878
	Jun	18 586	3 763	60 401	10 404	78 987	14 168
	Jul	17 042	3 515	58 540	10 042	75 582	13 557
	Aug	17 967	3 655	58 888	10 218	76 856	13 873
	Sep	18 137	3 780	56 858	9 990	74 994	13 770
	Oct	17 476	3 625	56 737	10 045	74 213	13 670
	Nov	17 499	3 673	54 673	9 719	72 172	13 391
	Dec	17 044	3 551	52 345	9 660	69 389	13 211
2020	Jan	17 774	3 711	55 534	9 975	73 307	13 686
	Feb	17 092	3 628	57 363	10 116	74 455	13 744
	Mar	18 365	3 759	54 290	9 852	72 655	13 611
	Apr	10 522	2 018	37 136	6 283	47 658	8 302
	May	14 224	2 893	46 808	8 062	61 032	10 955
	Jun	15 369	3 165	47 561	8 396	62 929	11 561
	Jul	17 886	3 716	49 650	8 800	67 536	12 516
	Aug	16 506	3 627	52 545	9 335	69 051	12 962
	Sep	16 386	3 368	52 668	9 310	69 054	12 678
	Oct	16 227	3 475	51 816	9 167	68 043	12 641

Table 4 – Month-on-month percentage change in seasonally adjusted freight transportation (income at current prices)

Year and month		Rail		Road		Total	
		Payload	Income	Payload	Income	Payload	Income
2019	Jan	21,5	13,8	-4,9	-4,1	0,4	0,1
	Feb	-6,6	-3,3	-0,4	-0,8	-2,0	-1,4
	Mar	-2,6	-2,9	-0,2	-1,1	-0,8	-1,6
	Apr	6,4	5,2	1,5	2,6	2,6	3,2
	May	-1,0	1,7	-2,7	-3,5	-2,3	-2,1
	Jun	0,3	-0,9	2,8	3,2	2,2	2,1
	Jul	-8,3	-6,6	-3,1	-3,5	-4,3	-4,3
	Aug	5,4	4,0	0,6	1,8	1,7	2,3
	Sep	0,9	3,4	-3,4	-2,2	-2,4	-0,7
	Oct	-3,6	-4,1	-0,2	0,6	-1,0	-0,7
	Nov	0,1	1,3	-3,6	-3,2	-2,8	-2,0
	Dec	-2,6	-3,3	-4,3	-0,6	-3,9	-1,3
2020	Jan	4,3	4,5	6,1	3,3	5,6	3,6
	Feb	-3,8	-2,2	3,3	1,4	1,6	0,4
	Mar	7,4	3,6	-5,4	-2,6	-2,4	-1,0
	Apr	-42,7	-46,3	-31,6	-36,2	-34,4	-39,0
	May	35,2	43,4	26,0	28,3	28,1	32,0
	Jun	8,0	9,4	1,6	4,1	3,1	5,5
	Jul	16,4	17,4	4,4	4,8	7,3	8,3
	Aug	-7,7	-2,4	5,8	6,1	2,2	3,6
	Sep	-0,7	-7,1	0,2	-0,3	0,0	-2,2
	Oct	-1,0	3,2	-1,6	-1,5	-1,5	-0,3

Table 5 – Freight transportation income at current prices by type of commodity (R million)

Type of commodity	May-20	Jun-20	Jul-20	Aug-20	Sep-20	Oct-20 1/
Agriculture and forestry primary products	854	906	971	1 010	1 006	939
Primary mining and quarrying products	4 345	4 460	4 877	5 188	5 174	4 865
Manufactured food, beverages and tobacco products	1 245	1 202	1 164	1 216	1 259	1 274
Textiles, clothing and leather products	158	183	194	200	223	251
Chemicals, coke, petroleum, rubber, plastic and other mineral products	772	818	836	864	893	935
Basic metals and fabricated metal products	116	225	239	294	254	257
Non-metallic products	184	228	240	270	244	232
Electrical machinery, transport machinery and equipment	140	155	170	178	164	166
Motor vehicles, parts and accessories	218	240	257	275	280	292
Paper and paper products	89	84	88	85	84	87
Commercial products	190	218	234	243	283	275
Used household and office products	119	150	156	150	168	198
Containers	567	585	597	653	658	667
Parcels	155	297	310	317	299	314
Other freight	1 822	2 108	2 279	2 376	2 297	2 431
Total	10 974	11 862	12 612	13 319	13 285	13 184

1/ Figures are preliminary.

Table 6 – Year-on-year percentage change in freight transportation income at current prices by type of commodity

Type of commodity	May-20	Jun-20	Jul-20	Aug-20	Sep-20	Oct-20
Agriculture and forestry primary products	-11,2	-1,9	0,9	-3,1	7,1	-5,4
Primary mining and quarrying products	-17,0	-14,3	5,3	0,3	1,0	1,2
Manufactured food, beverages and tobacco products	-16,3	-20,5	-27,2	-22,7	-20,1	-24,5
Textiles, clothing and leather products	-31,6	-6,6	1,0	-2,0	3,2	-3,8
Chemicals, coke, petroleum, rubber, plastic and other mineral products	-15,4	-11,1	-12,6	-12,7	0,3	-9,0
Basic metals and fabricated metal products	-76,1	-55,5	-45,3	-23,4	-30,0	-19,9
Non-metallic products	-37,4	-24,3	-18,1	-3,6	-14,7	-24,2
Electrical machinery, transport machinery and equipment	-30,7	-20,1	-19,0	-21,6	-23,4	-23,1
Motor vehicles, parts and accessories	-21,6	-17,5	-19,2	-10,7	-10,8	-17,7
Paper and paper products	-8,2	-17,6	-13,7	-16,7	-17,6	-25,0
Commercial products	-12,8	3,3	-7,9	-4,3	-2,1	-14,9
Used household and office products	-31,2	-17,6	-17,9	-53,4	-15,6	12,5
Containers	-21,3	-23,3	-21,6	-25,4	-13,0	-14,0
Parcels	-40,2	5,7	8,0	-1,6	3,1	-3,7
Other freight	-28,5	-16,2	-9,3	-7,6	-9,8	-9,1
Total	-22,2	-15,9	-8,0	-8,9	-5,8	-8,2

Table 7 – Contribution of each type of commodity to the year-on-year percentage change in freight transportation income at current prices (percentage points)

Type of commodity	May-20	Jun-20	Jul-20	Aug-20	Sep-20	Oct-20
Agriculture and forestry primary products	-0,8	-0,1	0,1	-0,2	0,5	-0,4
Primary mining and quarrying products	-6,3	-5,3	1,8	0,1	0,4	0,4
Manufactured food, beverages and tobacco products	-1,7	-2,2	-3,2	-2,4	-2,2	-2,9
Textiles, clothing and leather products	-0,5	-0,1	0,0	0,0	0,0	-0,1
Chemicals, coke, petroleum, rubber, plastic and other mineral products	-1,0	-0,7	-0,9	-0,9	0,0	-0,6
Basic metals and fabricated metal products	-2,6	-2,0	-1,4	-0,6	-0,8	-0,4
Non-metallic products	-0,8	-0,5	-0,4	-0,1	-0,3	-0,5
Electrical machinery, transport machinery and equipment	-0,4	-0,3	-0,3	-0,3	-0,4	-0,3
Motor vehicles, parts and accessories	-0,4	-0,4	-0,4	-0,2	-0,2	-0,4
Paper and paper products	-0,1	-0,1	-0,1	-0,1	-0,1	-0,2
Commercial products	-0,2	0,0	-0,1	-0,1	0,0	-0,3
Used household and office products	-0,4	-0,2	-0,2	-1,2	-0,2	0,2
Containers	-1,1	-1,3	-1,2	-1,5	-0,7	-0,8
Parcels	-0,7	0,1	0,2	0,0	0,1	-0,1
Other freight	-5,1	-2,9	-1,7	-1,3	-1,8	-1,7
Total	-22,2	-15,9	-8,0	-8,9	-5,8	-8,2

Table 8 – Passenger transportation (income at current prices)

Year and month 1/		Rail		Road		Total	
		Passenger journeys (000)	Income (R million)	Passenger journeys (000)	Income (R million)	Passenger journeys (000)	Income (R million)
2019	Jan	16 012	204	24 212	832	40 224	1 036
	Feb	18 585	194	23 360	739	41 945	933
	Mar	18 107	200	24 392	829	42 499	1 029
	Apr	15 965	176	24 779	844	40 744	1 020
	May	14 236	186	24 645	801	38 881	987
	Jun	14 268	165	20 523	798	34 791	963
	Jul	14 246	179	25 754	833	40 000	1 012
	Aug	14 644	192	25 507	819	40 151	1 011
	Sep	13 705	187	27 017	928	40 722	1 115
	Oct	14 994	198	26 678	895	41 672	1 093
	Nov	12 661	172	24 923	853	37 584	1 025
	Dec	7 176	111	21 816	864	28 992	975
	Total	174 599	2 164	293 606	10 035	468 205	12 199
2020	Jan	8 651	177	23 911	840	32 562	1 017
	Feb	10 665	173	24 621	789	35 286	962
	Mar	5 499	103	23 060	771	28 559	874
	Apr	0	0	6 457	185	6 457	185
	May	61	4	11 199	326	11 260	330
	Jun	145	10	12 903	396	13 048	406
	Jul	274	12	14 738	445	15 012	457
	Aug	402	15	14 833	457	15 235	472
	Sep	390	19	18 332	589	18 722	608
	Oct	488	23	18 040	573	18 528	596

1/ Figures for the latest month are preliminary.

Table 9 – Year-on-year percentage change in passenger transportation (income at current prices)

Year and month		Rail		Road		Total	
		Passenger journeys	Income	Passenger journeys	Income	Passenger journeys	Income
2019	Jan	-16,3	-3,3	-12,2	-3,0	-13,9	-3,1
	Feb	-12,2	-6,3	-13,9	-2,1	-13,2	-3,0
	Mar	-17,7	-6,5	-15,7	-2,8	-16,5	-3,6
	Apr	-38,6	-22,8	23,9	29,4	-11,4	15,9
	May	-32,9	-11,0	24,1	30,2	-5,3	19,8
	Jun	-34,1	-18,3	-14,6	3,8	-23,8	-0,8
	Jul	-42,0	-14,4	-1,6	-1,5	-21,2	-4,1
	Aug	-35,7	7,3	-4,7	2,4	-19,0	3,3
	Sep	-35,5	-11,8	0,4	13,9	-15,4	8,6
	Oct	-26,5	-10,4	-0,8	4,7	-11,9	1,6
	Nov	-38,6	-14,4	-7,8	0,7	-21,2	-2,2
	Dec	-43,1	-21,3	-3,4	2,1	-17,6	-1,2
	Total	-31,1	-11,1	-3,4	5,5	-16,0	2,1
2020	Jan	-46,0	-13,2	-1,2	1,0	-19,0	-1,8
	Feb	-42,6	-10,8	5,4	6,8	-15,9	3,1
	Mar	-69,6	-48,5	-5,5	-7,0	-32,8	-15,1
	Apr	-100,0	-100,0	-73,9	-78,1	-84,2	-81,9
	May	-99,6	-97,8	-54,6	-59,3	-71,0	-66,6
	Jun	-99,0	-93,9	-37,1	-50,4	-62,5	-57,8
	Jul	-98,1	-93,3	-42,8	-46,6	-62,5	-54,8
	Aug	-97,3	-92,2	-41,8	-44,2	-62,1	-53,3
	Sep	-97,2	-89,8	-32,1	-36,5	-54,0	-45,5
	Oct	-96,7	-88,4	-32,4	-36,0	-55,5	-45,5

Table 10 – Seasonally adjusted passenger transportation (income at current prices)

Year and month		Rail		Road		Total	
		Passenger journeys (000)	Income (R million)	Passenger journeys (000)	Income (R million)	Passenger journeys (000)	Income (R million)
2019	Jan	18 167	197	25 893	842	44 060	1 039
	Feb	17 857	189	22 879	791	40 735	980
	Mar	17 043	190	22 056	784	39 099	974
	Apr	17 013	183	25 882	882	42 895	1 065
	May	13 802	186	23 943	825	37 745	1 011
	Jun	14 048	185	20 975	816	35 023	1 001
	Jul	14 248	177	25 595	826	39 843	1 003
	Aug	13 325	182	24 974	829	38 299	1 010
	Sep	13 165	176	25 322	877	38 487	1 053
	Oct	12 935	178	25 935	865	38 870	1 042
	Nov	12 221	168	25 006	845	37 227	1 013
	Dec	10 141	150	24 833	850	34 974	1 000
2020	Jan	9 875	165	25 541	846	35 416	1 011
	Feb	9 996	164	24 871	845	34 866	1 009
	Mar	5 233	99	20 103	733	25 336	832
	Apr	0	0	7 915	220	7 915	220
	May	61	4	11 205	350	11 266	354
	Jun	140	11	12 319	416	12 459	427
	Jul	262	12	14 488	437	14 749	448
	Aug	390	15	14 679	468	15 069	483
	Sep	362	18	16 523	537	16 884	555
	Oct	423	20	17 694	537	18 116	557

Table 11 – Month-on-month percentage change in seasonally adjusted passenger transportation (income at current prices)

Year and month		Rail		Road		Total	
		Passenger journeys	Income	Passenger journeys	Income	Passenger journeys	Income
2019	Jan	-0,2	4,8	-2,3	1,3	-1,4	1,9
	Feb	-1,7	-4,1	-11,6	-6,1	-7,5	-5,7
	Mar	-4,6	0,5	-3,6	-0,9	-4,0	-0,6
	Apr	-0,2	-3,7	17,3	12,5	9,7	9,3
	May	-18,9	1,6	-7,5	-6,5	-12,0	-5,1
	Jun	1,8	-0,5	-12,4	-1,1	-7,2	-1,0
	Jul	1,4	-4,3	22,0	1,2	13,8	0,2
	Aug	-6,5	2,8	-2,4	0,4	-3,9	0,7
	Sep	-1,2	-3,3	1,4	5,8	0,5	4,3
	Oct	-1,7	1,1	2,4	-1,4	1,0	-1,0
	Nov	-5,5	-5,6	-3,6	-2,3	-4,2	-2,8
	Dec	-17,0	-10,7	-0,7	0,6	-6,1	-1,3
2020	Jan	-2,6	10,0	2,9	-0,5	1,3	1,1
	Feb	1,2	-0,6	-2,6	-0,1	-1,6	-0,2
	Mar	-47,6	-39,6	-19,2	-13,3	-27,3	-17,5
	Apr	-100,0	-100,0	-60,6	-70,0	-68,8	-73,6
	May	1/	1/	41,6	59,1	42,3	60,9
	Jun	129,5	175,0	9,9	18,9	10,6	20,6
	Jul	87,1	9,1	17,6	5,0	18,4	4,9
	Aug	48,9	25,0	1,3	7,1	2,2	7,8
	Sep	-7,2	20,0	12,6	14,7	12,0	14,9
	Oct	16,9	11,1	7,1	0,0	7,3	0,4

1/ Changes from zero in the preceding period cannot be calculated as a percentage.

Survey information

Introduction	1	Statistics South Africa (Stats SA) conducts a monthly survey of the land transportation industry, covering passenger and freight transportation by rail and road (see paragraph 4 below). This survey is based on a sample drawn from the 2019 business sampling frame (BSF) that contains businesses registered for value added tax (VAT) and income tax.
	2	In order to improve timeliness, some information for the latest month had to be estimated due to late response. These estimates will be revised in future statistical releases as soon as information becomes available. Published land transportation income estimates exclude VAT.
Purpose of the survey	3	The results of the monthly land transport survey are used to compile estimates of the gross domestic product (GDP) and its components, which are used in monitoring the state of the economy and formulation of economic policy. These statistics are also used in the analysis of comparative business and industry performance.
Scope of the survey	4	This survey covers enterprises involved in land transportation according to the following type of transportation: <ul style="list-style-type: none"> • railway transport (including passenger and freight transportation); • 'other' scheduled passenger land transport – urban, suburban and inter-urban bus and coach passenger lines and school buses; • 'other' non-scheduled passenger land transport – safaris and sightseeing bus tours, metered taxis and 'other' passenger transport including renting of motor cars with drivers; and • freight transport by road.
Exclusions	5	Passenger transportation excludes: <ul style="list-style-type: none"> • minibus taxis; • metropolitan buses (including the Bus Rapid Transport system – BRT); and • rental of private cars/buses without drivers. <p>Freight transportation excludes:</p> <ul style="list-style-type: none"> • renting of trucks without drivers; and • in-house transportation.
Classification	6	The 1993 edition of the <i>Standard Industrial Classification of all Economic Activities</i> (SIC), Fifth Edition, Report No. 09-90-02, was used to classify the statistical units in the survey. The SIC is based on the 1990 <i>International Standard Industrial Classification of all Economic Activities</i> (ISIC) with suitable adaptations for local conditions. Statistics in this publication are presented at SIC division (two-digit) level. Each enterprise is classified to the industry which reflects its predominant activity.
Collection rate	7	The preliminary collection rate for the survey on land transportation for October 2020 was 83,1%. The improved collection rate for September 2020 was 89,6%.
Statistical unit	8	The statistical unit for which information is compiled and published is an enterprise, defined as a legal unit or a combination of legal units that includes and directly controls all functions necessary to carry out its income activities. The statistical units are derived from and linked to the South African Revenue Service (SARS) administrative data.
Revised figures	9	Revised figures are mainly due to late submission of data to Stats SA, or respondents reporting revisions or corrections to their figures. Preliminary figures, as indicated in the relevant tables, are subject to change and when revised will not be indicated as such.

- 6** Inaccuracies may occur because of imperfections in reporting by enterprises and errors made in the collection and processing of the data. Inaccuracies of this kind are referred to as non-sampling errors. Every effort is made to minimise non-sampling errors by careful design of questionnaires, testing them in pilot studies, editing reported data and implementing efficient operating procedures. Fluctuations may occur in consecutive months as a result of seasonal and economic factors.
- Year-on-year percentage change** **7** The year-on-year percentage change in a variable for any given period is the change between that period and the corresponding period of the previous year, expressed as a percentage of the latter.
- Contribution (percentage points)** **8** The contribution (percentage points) to the annual percentage change for any given period is calculated by multiplying the percentage change of each type of commodity/service by its corresponding weight, divided by 100. The weight is the percentage contribution of each type of commodity/service to total income in the corresponding period of the previous year.
- Seasonal adjustment** **9** Seasonally adjusted estimates are generated each month using the X-12-ARIMA Seasonal Adjustment Program developed by the US Bureau of the Census. Seasonal adjustment is a means of removing the estimated effects of normal seasonal variation from the series so that the effects of other influences on the series can be recognised more clearly. Seasonal adjustment does not aim to remove irregular or non-seasonal influences which may be present in any particular month. Influences that are volatile or unsystematic can still make it difficult to interpret the movement of the series even after adjustment for seasonal variations. Therefore the month-to-month movements of seasonally adjusted estimates may not be reliable indicators of trend behaviour. The X-12-ARIMA procedure for land transportation is described in more detail on the Stats SA website at:
[Click to download seasonal adjustment land transport August 2017](#)
- Note:** Owing to the impact of the COVID-19 lockdown, additive outlier and transitory change adjustments were applied. Transitory (temporary) change describes a temporary effect on the level of a series after a certain point in time. The methodology will be reviewed as more data points are added to the time series.
- Trend cycle** **10** The trend is the long-term pattern or movement of a time series. The X-12-ARIMA Seasonal Adjustment Program is used for smoothing seasonally adjusted estimates to estimates of the underlying trend cycle.

Glossary

Enterprise An enterprise is a legal entity or a combination of legal units that includes and directly controls all functions necessary to carry out its activities.

Industry An industry is made up of enterprises engaged in the same or similar kinds of economic activity. Industries are defined in the *System of National Accounts* (SNA) in the same way as in the *Standard Industrial Classification of all Economic Activities* (SIC), Fifth Edition, Report No. 09-90-02 of January 1993.

Symbols and abbreviations	BSF	Business sampling frame
	GDP	Gross domestic product
	ISIC	International Standard Industrial Classification
	SIC	Standard Industrial Classification of all Economic Activities
	SARS	South African Revenue Service
	Stats SA	Statistics South Africa
	VAT	Value added tax

Technical enquiries

Kagisho Mathabatha Telephone number: (082) 409 7077
Email: kagishoma@statssa.gov.za

Juan-Pierre Terblanche Telephone number: (072) 901 1222
Email: Juan-PierreT@statssa.gov.za

