



stats sa

Department:
Statistics South Africa
REPUBLIC OF SOUTH AFRICA

Private Bag X44, Pretoria, 0001, South Africa, ISibalo House, Koch Street, Salvokop, Pretoria, 0002
www.statssa.gov.za, info@statssa.gov.za, Tel +27 12 310 8911

STATISTICAL RELEASE

P7162

Land transport (Preliminary)

November 2023

Embargoed until:
22 January 2024
11:30

ENQUIRIES:
Raquel Floris
Tel: (012) 337 6488

FORTHCOMING ISSUE:
December 2023

EXPECTED RELEASE DATE:
19 February 2024



Contents

Freight transportation: results for November 2023	2
Table A – Year-on-year percentage change in freight transportation (income at current prices).....	2
Table B – Freight transportation income at current prices for the latest three months by type of commodity.....	2
Table C – Seasonally adjusted payload for the latest three months by type of transport.....	3
Figure 1 – Freight transportation: seasonally adjusted payload	3
Figure 2 – Freight transportation: year-on-year percentage change in payload.....	3
Passenger transportation: results for November 2023	4
Table D – Year-on-year percentage change in passenger transportation (income at current prices).....	4
Table E – Seasonally adjusted passenger journeys for the latest three months by type of transport.....	4
Figure 3 – Passenger transportation: seasonally adjusted passenger journeys	4
Figure 4 – Passenger transportation: year-on-year percentage change in passenger journeys.....	5
Tables	6
Table 1 – Freight transportation (income at current prices)	6
Table 2 – Year-on-year percentage change in freight transportation (income at current prices)	6
Table 3 – Seasonally adjusted freight transportation (income at current prices).....	7
Table 4 – Month-on-month percentage change in seasonally adjusted freight transportation (income at current prices)	7
Table 5 – Freight transportation income at current prices by type of commodity (R million).....	8
Table 6 – Year-on-year percentage change in freight transportation income at current prices by type of commodity.....	8
Table 7 – Contribution of each type of commodity to the year-on-year percentage change in freight transportation income at current prices (percentage points)	8
Table 8 – Passenger transportation (income at current prices).....	9
Table 9 – Year-on-year percentage change in passenger transportation (income at current prices)	9
Table 10 – Seasonally adjusted passenger transportation (income at current prices).....	10
Table 11 – Month-on-month percentage change in seasonally adjusted passenger transportation (income at current prices)	10
Survey information	11
Technical notes.....	12
Glossary	13
Technical enquiries	14
General information.....	14

Freight transportation: results for November 2023

Table A – Year-on-year percentage change in freight transportation (income at current prices)

	Jun-23	Jul-23	Aug-23	Sep-23	Oct-23	Nov-23
Freight payload	-2,5	-4,9	-10,0	0,3	-1,1	1,6
Freight income	0,3	-4,1	-4,6	4,5	6,2	3,3

The volume of goods transported (payload) increased by 1,6% in November 2023 compared with November 2022. The corresponding income increased by 3,3% over the same period.

Table B – Freight transportation income at current prices for the latest three months by type of commodity

Type of commodity	Sep – Nov 2022 (R million)	Weight (%)	Sep – Nov 2023 (R million)	% change between Sep – Nov 2022 and Sep – Nov 2023	Contribution (% points) to the total % change
Agriculture and forestry primary products	4 049	7,2	3 805	-6,0	-0,4
Primary mining and quarrying products	18 150	32,1	20 132	10,9	3,5
Manufactured food, beverages and tobacco products	7 709	13,6	6 767	-12,2	-1,7
Textiles, clothing and leather goods	1 536	2,7	1 564	1,8	0,0
Chemicals, coke, petroleum, rubber, plastic and other mineral products	2 813	5,0	2 762	-1,8	-0,1
Basic metals and fabricated metal products	722	1,3	740	2,5	0,0
Non-metallic products	475	0,8	513	8,0	0,1
Electrical machinery, transport machinery and equipment	1 025	1,8	1 081	5,5	0,1
Motor vehicles, parts and accessories	1 604	2,8	1 555	-3,1	-0,1
Paper and paper products	324	0,6	308	-4,9	0,0
Commercial products	1 340	2,4	1 267	-5,4	-0,1
Used household and office products	1 342	2,4	1 213	-9,6	-0,2
Containers	2 420	4,3	2 600	7,4	0,3
Parcels	1 644	2,9	1 631	-0,8	0,0
Other freight	11 416	20,2	13 245	16,0	3,2
Total income	56 568	100,0	59 183	4,6	4,6

Income from freight transportation increased by 4,6% in the three months ended November 2023 compared with the three months ended November 2022. The main positive contributors to this increase were:

- primary mining and quarrying products (10,9% and contributing 3,5 percentage points); and
- 'other' freight (16,0% and contributing 3,2 percentage points) – see Table B.

Table C – Seasonally adjusted payload for the latest three months by type of transport

Payload	Jun – Aug 2023 (000 tons)	Weight (%)	Sep – Nov 2023 (000 tons)	% change between Jun – Aug 2023 and Sep – Nov 2023	Contribution (% points) to the total % change
Rail	38 458	15,5	43 191	12,3	1,9
Road	209 005	84,5	214 607	2,7	2,3
Total	247 462	100,0	257 798	4,2	4,2

Seasonally adjusted payload increased by 4,2% in the three months ended November 2023 compared with the previous three months. Road freight increased by 2,7% (contributing 2,3 percentage points) and rail freight increased by 12,3% (contributing 1,9 percentage points) – see Table C.

Figure 1 – Freight transportation: seasonally adjusted payload

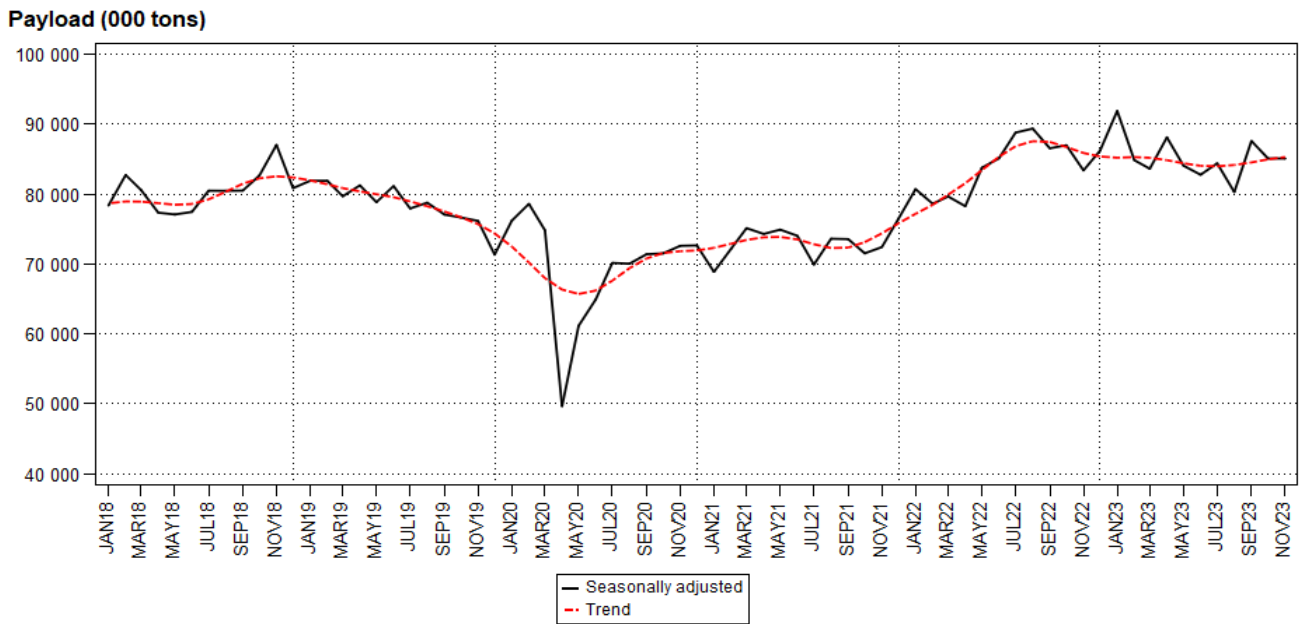
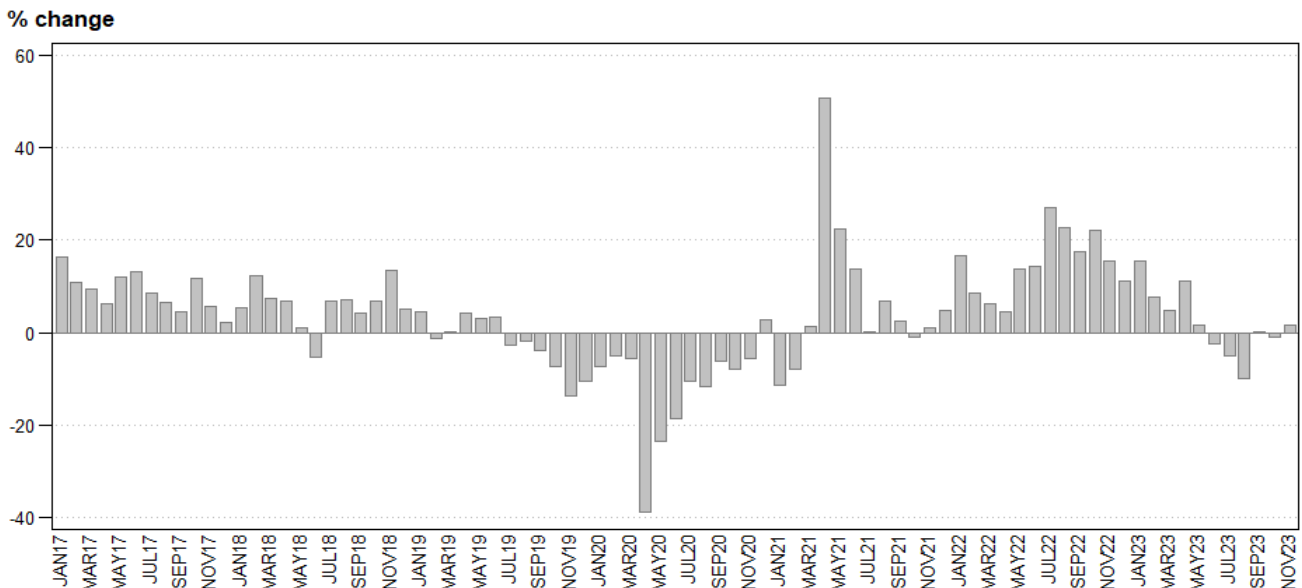


Figure 2 – Freight transportation: year-on-year percentage change in payload



Passenger transportation: results for November 2023

Table D – Year-on-year percentage change in passenger transportation (income at current prices)

	Jun-23	Jul-23	Aug-23	Sep-23	Oct-23	Nov-23
Passenger journeys	15,8	19,4	14,2	23,8	23,0	14,6
Passenger income	16,9	10,0	10,6	14,8	15,1	10,3

The number of passenger journeys increased by 14,6% in November 2023 compared with November 2022. The corresponding income increased by 10,3% over the same period.

Table E – Seasonally adjusted passenger journeys for the latest three months by type of transport

Passenger journeys	Jun – Aug 2023 (000)	Weight (%)	Sep – Nov 2023 (000)	% change between Jun – Aug 2023 and Sep – Nov 2023	Contribution (% points) to the total % change
Rail	10 194	13,6	11 229	10,2	1,4
Road	64 920	86,4	68 495	5,5	4,8
Total	75 116	100,0	79 724	6,1	6,1

Seasonally adjusted passenger journeys increased by 6,1% in the three months ended November 2023 compared with the previous three months. Road passenger journeys increased by 5,5% (contributing 4,8 percentage points) and rail passenger journeys increased by 10,2% (contributing 1,4 percentage points) – see Table E.

Figure 3 – Passenger transportation: seasonally adjusted passenger journeys

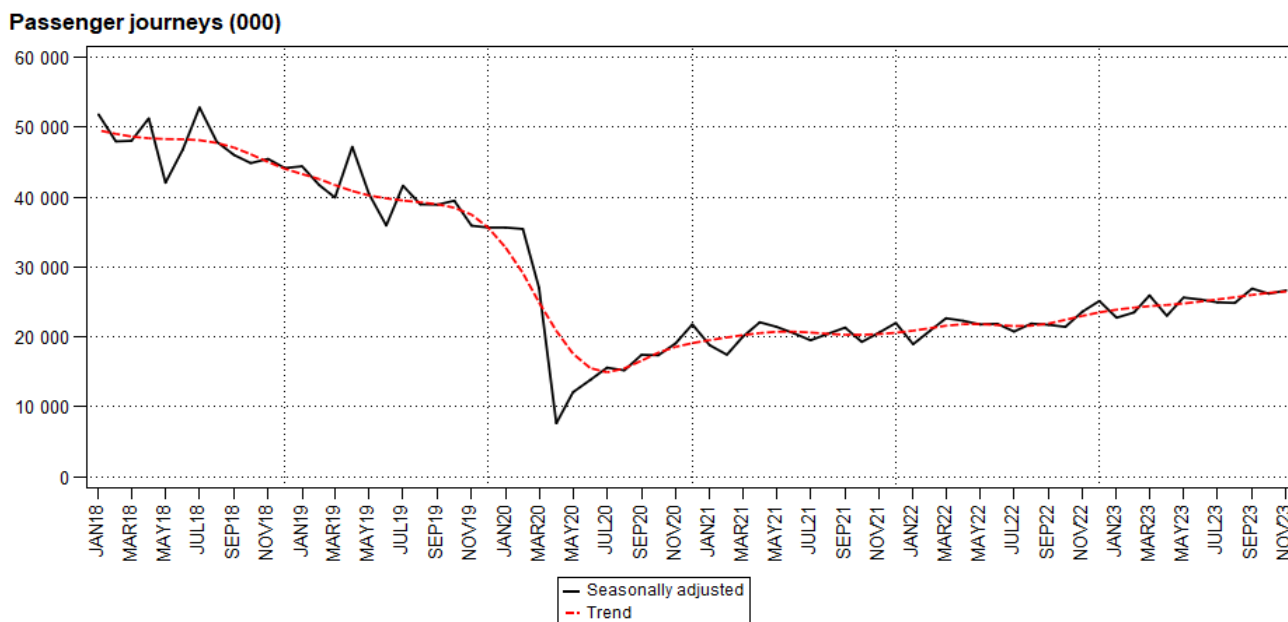
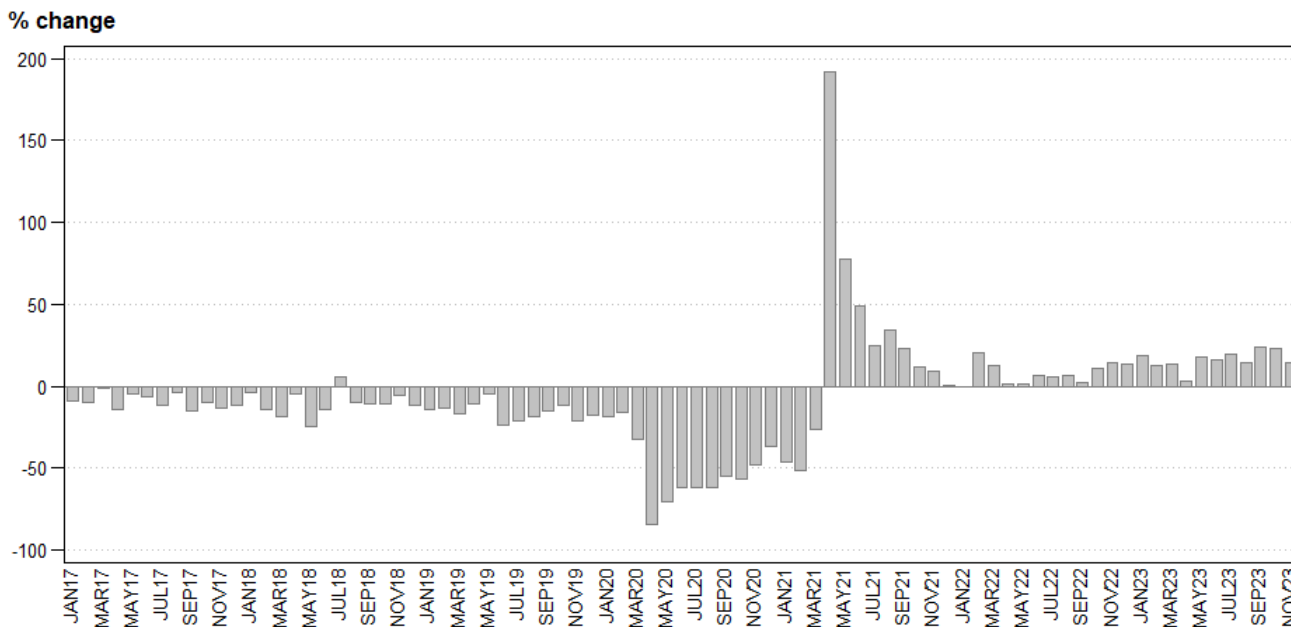


Figure 4 – Passenger transportation: year-on-year percentage change in passenger journeys



Risenga Maluleke
Statistician-General

Tables

Table 1 – Freight transportation (income at current prices)

Year and month ¹		Rail		Road		Total	
		Payload (000 tons)	Income (R million)	Payload (000 tons)	Income (R million)	Payload (000 tons)	Income (R million)
2022	Jan	13 996	2 893	59 044	12 052	73 040	14 945
	Feb	14 780	3 054	58 519	12 149	73 299	15 203
	Mar	13 228	2 765	65 972	13 746	79 200	16 511
	Apr	14 431	3 127	61 895	13 036	76 326	16 163
	May	13 751	2 976	72 524	15 065	86 275	18 041
	Jun	13 261	3 060	72 484	15 170	85 745	18 230
	Jul	12 271	2 850	77 702	16 396	89 973	19 246
	Aug	14 515	3 303	82 749	16 865	97 264	20 168
	Sep	14 801	3 497	75 168	15 839	89 969	19 336
	Oct	9 997	2 076	79 449	16 158	89 446	18 234
	Nov	9 133	2 296	78 767	16 702	87 900	18 998
	Dec	12 019	2 785	68 406	14 373	80 425	17 158
	Total	156 183	34 682	852 679	177 551	1 008 862	212 233
2023	Jan	13 242	2 986	70 995	14 683	84 237	17 669
	Feb	12 961	2 976	65 887	13 854	78 848	16 830
	Mar	11 964	2 853	71 003	14 971	82 967	17 824
	Apr	13 552	3 283	71 195	14 707	84 747	17 990
	May	12 096	3 060	75 445	15 485	87 541	18 545
	Jun	13 282	3 500	70 292	14 781	83 574	18 280
	Jul	11 247	2 856	74 273	15 608	85 520	18 463
	Aug	13 841	3 485	73 709	15 747	87 550	19 232
	Sep	18 971	4 825	71 311	15 373	90 281	20 198
	Oct	11 839	3 052	76 653	16 306	88 492	19 358
	Nov	13 330	3 457	75 978	16 171	89 308	19 627

¹ Figures for the latest month are preliminary.

Table 2 – Year-on-year percentage change in freight transportation (income at current prices)

Year and month		Rail		Road		Total	
		Payload	Income	Payload	Income	Payload	Income
2022	Jan	7,1	4,0	19,1	21,0	16,6	17,3
	Feb	-1,5	-3,1	11,3	12,6	8,5	9,0
	Mar	-13,4	-16,5	11,2	14,8	6,2	8,0
	Apr	-7,6	-6,9	7,8	12,6	4,5	8,2
	May	-6,9	-5,1	18,9	22,5	13,8	16,9
	Jun	-18,4	-10,6	23,3	28,7	14,3	19,9
	Jul	-0,2	9,4	32,8	40,2	27,0	34,6
	Aug	-11,5	-4,6	31,4	32,1	22,6	24,3
	Sep	-8,4	1,7	24,5	27,7	17,5	22,1
	Oct	-23,0	-27,4	31,8	30,0	22,1	19,3
	Nov	-37,0	-24,2	27,6	30,0	15,3	19,6
	Dec	-20,6	-10,5	19,6	20,8	11,2	14,3
	Total	-12,0	-7,9	21,8	24,7	15,0	17,9
2023	Jan	-5,4	3,2	20,2	21,8	15,3	18,2
	Feb	-12,3	-2,6	12,6	14,0	7,6	10,7
	Mar	-9,6	3,2	7,6	8,9	4,8	8,0
	Apr	-6,1	5,0	15,0	12,8	11,0	11,3
	May	-12,0	2,8	4,0	2,8	1,5	2,8
	Jun	0,2	14,4	-3,0	-2,6	-2,5	0,3
	Jul	-8,3	0,2	-4,4	-4,8	-4,9	-4,1
	Aug	-4,6	5,5	-10,9	-6,6	-10,0	-4,6
	Sep	28,2	38,0	-5,1	-2,9	0,3	4,5
	Oct	18,4	47,0	-3,5	0,9	-1,1	6,2
	Nov	46,0	50,6	-3,5	-3,2	1,6	3,3

Table 3 – Seasonally adjusted freight transportation (income at current prices)

Year and month		Rail		Road		Total	
		Payload (000 tons)	Income (R million)	Payload (000 tons)	Income (R million)	Payload (000 tons)	Income (R million)
2022	Jan	14 293	3 014	66 420	13 511	80 713	16 526
	Feb	14 559	3 083	64 052	13 186	78 612	16 268
	Mar	13 701	2 973	65 953	13 753	79 654	16 726
	Apr	13 926	3 013	64 342	13 497	78 268	16 510
	May	13 991	3 042	69 769	14 604	83 759	17 646
	Jun	12 774	2 897	72 349	15 197	85 123	18 094
	Jul	14 072	3 157	74 723	15 774	88 796	18 931
	Aug	13 391	3 066	75 984	15 743	89 375	18 809
	Sep	13 528	3 192	73 028	15 336	86 556	18 527
	Oct	10 986	2 202	75 997	15 541	86 983	17 743
	Nov	8 803	2 218	74 585	15 645	83 387	17 863
	Dec	12 207	2 800	74 015	15 406	86 221	18 206
2023	Jan	13 493	3 116	78 414	16 183	91 907	19 299
	Feb	12 714	2 999	72 142	15 051	84 856	18 050
	Mar	12 440	3 068	71 190	14 979	83 631	18 046
	Apr	13 040	3 162	75 077	15 520	88 117	18 682
	May	12 393	3 140	71 678	14 857	84 070	17 997
	Jun	12 834	3 314	69 932	14 662	82 766	17 976
	Jul	12 833	3 156	71 573	15 076	84 406	18 232
	Aug	12 791	3 238	67 500	14 695	80 290	17 933
	Sep	17 348	4 400	70 257	15 068	87 605	19 467
	Oct	12 991	3 239	72 110	15 423	85 101	18 661
	Nov	12 852	3 353	72 240	15 236	85 092	18 589

Table 4 – Month-on-month percentage change in seasonally adjusted freight transportation (income at current prices)

Year and month		Rail		Road		Total	
		Payload	Income	Payload	Income	Payload	Income
2022	Jan	-7,4	-4,5	8,8	6,7	5,6	4,5
	Feb	1,9	2,3	-3,6	-2,4	-2,6	-1,6
	Mar	-5,9	-3,6	3,0	4,3	1,3	2,8
	Apr	1,6	1,3	-2,4	-1,9	-1,7	-1,3
	May	0,5	1,0	8,4	8,2	7,0	6,9
	Jun	-8,7	-4,8	3,7	4,1	1,6	2,5
	Jul	10,2	9,0	3,3	3,8	4,3	4,6
	Aug	-4,8	-2,9	1,7	-0,2	0,7	-0,6
	Sep	1,0	4,1	-3,9	-2,6	-3,2	-1,5
	Oct	-18,8	-31,0	4,1	1,3	0,5	-4,2
	Nov	-19,9	0,7	-1,9	0,7	-4,1	0,7
	Dec	38,7	26,2	-0,8	-1,5	3,4	1,9
2023	Jan	10,5	11,3	5,9	5,0	6,6	6,0
	Feb	-5,8	-3,8	-8,0	-7,0	-7,7	-6,5
	Mar	-2,2	2,3	-1,3	-0,5	-1,4	0,0
	Apr	4,8	3,1	5,5	3,6	5,4	3,5
	May	-5,0	-0,7	-4,5	-4,3	-4,6	-3,7
	Jun	3,6	5,5	-2,4	-1,3	-1,6	-0,1
	Jul	0,0	-4,8	2,3	2,8	2,0	1,4
	Aug	-0,3	2,6	-5,7	-2,5	-4,9	-1,6
	Sep	35,6	35,9	4,1	2,5	9,1	8,6
	Oct	-25,1	-26,4	2,6	2,4	-2,9	-4,1
	Nov	-1,1	3,5	0,2	-1,2	0,0	-0,4

Table 5 – Freight transportation income at current prices by type of commodity (R million)

Type of commodity	Jun-23	Jul-23	Aug-23	Sep-23	Oct-23	Nov-23 ¹
Agriculture and forestry primary products	1 274	1 245	1 324	1 218	1 297	1 290
Primary mining and quarrying products	6 533	6 397	5 883	7 024	6 366	6 742
Manufactured food, beverages and tobacco products	2 174	2 105	2 203	2 225	2 309	2 233
Textiles, clothing and leather products	455	424	437	457	527	580
Chemicals, coke, petroleum, rubber, plastic and other mineral products	848	858	937	981	893	888
Basic metals and fabricated metal products	290	263	268	257	280	203
Non-metallic products	164	163	151	150	172	191
Electrical machinery, transport machinery and equipment	352	393	367	319	364	398
Motor vehicles, parts and accessories	496	519	530	513	519	523
Paper and paper products	83	93	92	104	105	99
Commercial products	386	443	386	409	424	434
Used household and office products	418	437	405	393	409	411
Containers	844	919	865	871	843	886
Parcels	485	463	498	493	519	619
Other freight	3 478	3 740	4 886	4 784	4 332	4 129
Total	18 280	18 463	19 232	20 198	19 358	19 627

¹ Figures are preliminary.

Table 6 – Year-on-year percentage change in freight transportation income at current prices by type of commodity

Type of commodity	Jun-23	Jul-23	Aug-23	Sep-23	Oct-23	Nov-23
Agriculture and forestry primary products	-10,2	-14,1	-12,3	-12,6	-0,2	-4,9
Primary mining and quarrying products	8,3	-2,1	-18,5	5,1	10,3	18,4
Manufactured food, beverages and tobacco products	-11,2	-17,7	-17,5	-12,7	-7,8	-15,9
Textiles, clothing and leather products	8,9	1,0	-3,3	-3,8	5,6	3,2
Chemicals, coke, petroleum, rubber, plastic and other mineral products	-4,8	-8,4	0,3	8,3	-7,6	-5,6
Basic metals and fabricated metal products	12,8	15,9	16,0	-1,9	40,7	-22,2
Non-metallic products	1,9	-6,9	-17,0	-14,3	27,4	15,8
Electrical machinery, transport machinery and equipment	10,7	32,8	16,9	-1,2	6,4	10,6
Motor vehicles, parts and accessories	2,1	0,2	0,4	-4,1	-1,1	-3,9
Paper and paper products	-9,8	-13,1	-18,6	3,0	-0,9	-15,4
Commercial products	2,9	3,0	-10,9	-7,5	2,7	-10,5
Used household and office products	-19,5	-15,8	-23,6	-16,2	1,0	-12,2
Containers	3,3	2,9	0,3	6,7	15,8	1,1
Parcels	-2,2	-9,0	-6,9	-4,1	4,4	-2,2
Other freight	-0,7	1,8	33,6	29,5	12,8	6,4
Total	0,3	-4,1	-4,6	4,5	6,2	3,3

Table 7 – Contribution of each type of commodity to the year-on-year percentage change in freight transportation income at current prices (percentage points)

Type of commodity	Jun-23	Jul-23	Aug-23	Sep-23	Oct-23	Nov-23
Agriculture and forestry primary products	-0,8	-1,1	-0,9	-0,9	0,0	-0,4
Primary mining and quarrying products	2,8	-0,7	-6,6	1,8	3,3	5,5
Manufactured food, beverages and tobacco products	-1,5	-2,4	-2,3	-1,7	-1,1	-2,2
Textiles, clothing and leather products	0,2	0,0	-0,1	-0,1	0,2	0,1
Chemicals, coke, petroleum, rubber, plastic and other mineral products	-0,2	-0,4	0,0	0,4	-0,4	-0,3
Basic metals and fabricated metal products	0,2	0,2	0,2	0,0	0,4	-0,3
Non-metallic products	0,0	-0,1	-0,2	-0,1	0,2	0,1
Electrical machinery, transport machinery and equipment	0,2	0,5	0,3	0,0	0,1	0,2
Motor vehicles, parts and accessories	0,1	0,0	0,0	-0,1	0,0	-0,1
Paper and paper products	0,0	-0,1	-0,1	0,0	0,0	-0,1
Commercial products	0,1	0,1	-0,2	-0,2	0,1	-0,3
Used household and office products	-0,6	-0,4	-0,6	-0,4	0,0	-0,3
Containers	0,1	0,1	0,0	0,3	0,6	0,1
Parcels	-0,1	-0,2	-0,2	-0,1	0,1	-0,1
Other freight	-0,1	0,3	6,1	5,6	2,7	1,3
Total	0,3	-4,1	-4,6	4,5	6,2	3,3

Table 8 – Passenger transportation (income at current prices)

Year and month ¹		Rail		Road		Total	
		Passenger journeys (000)	Income (R million)	Passenger journeys (000)	Income (R million)	Passenger journeys (000)	Income (R million)
2022	Jan	1 367	35	16 590	660	17 957	695
	Feb	1 974	59	19 339	688	21 313	747
	Mar	2 218	68	22 313	828	24 531	896
	Apr	1 441	76	18 392	720	19 833	796
	May	1 285	77	19 773	716	21 058	793
	Jun	1 021	64	20 435	783	21 456	847
	Jul	1 056	91	19 488	768	20 544	859
	Aug	1 335	96	21 197	750	22 532	846
	Sep	1 400	104	22 437	831	23 837	935
	Oct	1 824	110	21 067	745	22 891	855
	Nov	2 311	104	22 682	785	24 993	889
	Dec	1 886	61	19 834	906	21 720	967
	Total	19 118	945	243 547	9 180	262 665	10 125
2023	Jan	2 483	125	18 901	787	21 384	912
	Feb	3 124	122	20 859	770	23 983	892
	Mar	3 567	136	24 333	903	27 900	1 039
	Apr	2 635	110	17 830	730	20 465	840
	May	3 468	113	21 437	776	24 905	889
	Jun	3 222	116	21 625	874	24 847	990
	Jul	3 163	96	21 371	849	24 534	945
	Aug	3 901	117	21 835	819	25 736	936
	Sep	3 844	143	25 668	930	29 512	1 073
	Oct	4 379	153	23 783	831	28 162	984
	Nov	4 915	143	23 738	838	28 653	981

¹ Figures for the latest month are preliminary.

Table 9 – Year-on-year percentage change in passenger transportation (income at current prices)

Year and month		Rail		Road		Total	
		Passenger journeys	Income	Passenger journeys	Income	Passenger journeys	Income
2022	Jan	21,2	45,8	-1,5	4,8	0,0	6,3
	Feb	36,1	103,4	18,6	11,9	20,1	16,0
	Mar	25,2	65,9	12,0	7,1	13,1	10,1
	Apr	-11,7	85,4	2,4	15,9	1,2	20,2
	May	-26,7	79,1	4,3	4,4	1,7	8,8
	Jun	-30,1	113,3	9,7	17,4	6,8	21,5
	Jul	-26,2	378,9	8,6	17,4	6,0	27,6
	Aug	-42,4	182,4	12,5	9,0	6,5	17,2
	Sep	-45,1	121,3	8,5	12,8	2,6	19,3
	Oct	-30,5	107,5	16,7	14,4	10,7	21,4
	Nov	1,0	108,0	16,3	14,1	14,7	20,5
	Dec	38,9	84,8	11,8	43,6	13,7	45,6
	Total	-12,1	112,8	10,0	14,2	8,0	19,3
2023	Jan	81,6	257,1	13,9	19,2	19,1	31,2
	Feb	58,3	106,8	7,9	11,9	12,5	19,4
	Mar	60,8	100,0	9,1	9,1	13,7	16,0
	Apr	82,9	44,7	-3,1	1,4	3,2	5,5
	May	169,9	46,8	8,4	8,4	18,3	12,1
	Jun	215,6	81,3	5,8	11,6	15,8	16,9
	Jul	199,5	5,5	9,7	10,5	19,4	10,0
	Aug	192,2	21,9	3,0	9,2	14,2	10,6
	Sep	174,6	37,5	14,4	11,9	23,8	14,8
	Oct	140,1	39,1	12,9	11,5	23,0	15,1
	Nov	112,7	37,5	4,7	6,8	14,6	10,3

Table 10 – Seasonally adjusted passenger transportation (income at current prices)

Year and month		Rail		Road		Total	
		Passenger journeys (000)	Income (R million)	Passenger journeys (000)	Income (R million)	Passenger journeys (000)	Income (R million)
2022	Jan	1 576	33	17 367	645	18 943	678
	Feb	1 901	57	19 011	734	20 912	791
	Mar	2 154	64	20 505	837	22 659	901
	Apr	1 712	80	20 578	810	22 290	890
	May	1 261	79	20 512	749	21 773	828
	Jun	1 045	67	20 823	766	21 868	833
	Jul	1 107	102	19 646	747	20 753	849
	Aug	1 212	96	20 681	753	21 893	850
	Sep	1 316	93	20 407	767	21 722	860
	Oct	1 554	93	19 871	732	21 425	825
	Nov	1 858	97	21 763	774	23 621	870
	Dec	2 652	88	22 477	871	25 129	959
2023	Jan	2 870	117	19 867	768	22 736	885
	Feb	3 019	117	20 465	822	23 483	939
	Mar	3 529	128	22 400	917	25 929	1 046
	Apr	3 129	116	19 881	822	23 009	938
	May	3 400	116	22 225	815	25 624	931
	Jun	3 323	121	22 008	849	25 332	970
	Jul	3 337	109	21 597	827	24 935	936
	Aug	3 534	118	21 315	824	24 849	943
	Sep	3 600	127	23 306	853	26 907	980
	Oct	3 713	129	22 463	820	26 176	949
	Nov	3 916	132	22 726	826	26 641	958

Table 11 – Month-on-month percentage change in seasonally adjusted passenger transportation (income at current prices)

Year and month		Rail		Road		Total	
		Passenger journeys	Income	Passenger journeys	Income	Passenger journeys	Income
2022	Jan	-18,0	-29,8	-13,4	6,1	-13,8	3,5
	Feb	20,6	72,7	9,5	13,8	10,4	16,7
	Mar	13,3	12,3	7,9	14,0	8,4	13,9
	Apr	-20,5	25,0	0,4	-3,2	-1,6	-1,2
	May	-26,3	-1,3	-0,3	-7,5	-2,3	-7,0
	Jun	-17,1	-15,2	1,5	2,3	0,4	0,6
	Jul	5,9	52,2	-5,7	-2,5	-5,1	1,9
	Aug	9,5	-5,9	5,3	0,8	5,5	0,1
	Sep	8,6	-3,1	-1,3	1,9	-0,8	1,2
	Oct	18,1	0,0	-2,6	-4,6	-1,4	-4,1
	Nov	19,6	4,3	9,5	5,7	10,2	5,5
	Dec	42,7	-9,3	3,3	12,5	6,4	10,2
2023	Jan	8,2	33,0	-11,6	-11,8	-9,5	-7,7
	Feb	5,2	0,0	3,0	7,0	3,3	6,1
	Mar	16,9	9,4	9,5	11,6	10,4	11,4
	Apr	-11,3	-9,4	-11,2	-10,4	-11,3	-10,3
	May	8,7	0,0	11,8	-0,9	11,4	-0,7
	Jun	-2,3	4,3	-1,0	4,2	-1,1	4,2
	Jul	0,4	-9,9	-1,9	-2,6	-1,6	-3,5
	Aug	5,9	8,3	-1,3	-0,4	-0,3	0,7
	Sep	1,9	7,6	9,3	3,5	8,3	3,9
	Oct	3,1	1,6	-3,6	-3,9	-2,7	-3,2
	Nov	5,5	2,3	1,2	0,7	1,8	0,9

Survey information

Introduction	1	Statistics South Africa (Stats SA) conducts a monthly survey of the land transportation industry, covering passenger and freight transportation by rail and road (see point 4 below). This survey is based on a sample drawn from the 2023 statistical business register (SBR) that contains businesses registered for value-added tax (VAT) and income tax.
	2	In order to improve timeliness, some information for the latest month had to be estimated due to late response. These estimates will be revised in future statistical releases as soon as information becomes available. Published land transportation income estimates exclude VAT.
Purpose of the survey	3	The results of the monthly land transport survey are used to compile estimates of the gross domestic product (GDP) and its components, which are used in monitoring the state of the economy and formulation of economic policy. These statistics are also used in the analysis of comparative business and industry performance.
Scope of the survey	4	This survey covers enterprises involved in land transportation according to the following types of transportation: <ul style="list-style-type: none"> • railway transport (including passenger and freight transportation); • ‘other’ scheduled passenger land transport – urban, suburban and inter-urban bus and coach passenger lines and school buses; • ‘other’ non-scheduled passenger land transport – safaris and sightseeing bus tours, metered taxis and ‘other’ passenger transport including renting of motor cars with drivers; and • freight transport by road.
Exclusions	5	Passenger transportation excludes: <ul style="list-style-type: none"> • minibus taxis; • metropolitan buses (including the Bus Rapid Transport system – BRT); and • rental of private cars/buses without drivers. <p>Freight transportation excludes:</p> <ul style="list-style-type: none"> • renting of trucks without drivers; and • in-house transportation.
Classification	6	The 1993 edition of the <i>Standard Industrial Classification of All Economic Activities</i> (SIC), Fifth Edition, Report No. 09-90-02, was used to classify the statistical units in the survey. The SIC is based on the 1990 <i>International Standard Industrial Classification of All Economic Activities</i> (ISIC) with suitable adaptations for local conditions. Statistics in this publication are presented at SIC division (two-digit) level. Each enterprise is classified to the industry which reflects its predominant activity.
Collection rate	7	The preliminary collection rate for the survey on land transportation for November 2023 was 64,9%. The improved collection rate for October 2023 was 69,1%.
Statistical unit	8	The statistical unit for which information is compiled and published is an enterprise, defined as a legal unit or a combination of legal units that includes and directly controls all functions necessary to carry out its income activities. The statistical units are derived from and linked to the South African Revenue Service (SARS) administrative data.
Revised figures	9	Revised figures are mainly due to late submission of data to Stats SA, or respondents reporting revisions or corrections to their figures. Preliminary figures, as indicated in the relevant tables, are subject to change and when revised will not be indicated as such.
Related publications	10	Users may also wish to refer to the following publication available from Stats SA – <ul style="list-style-type: none"> • <i>Stats in Brief</i> issued annually.

- Rounding-off of figures** 11 Where figures have been rounded off, discrepancies may occur between sums of the component items and the totals.
- Historical data** 12 Historical land transport data are available on the Stats SA website. To access the data electronically, use the following link:
[Click to download historical data.](#)
- Past publications** 13 Past land transport releases are available on the Stats SA website. To access the releases electronically, use the following link:
[Click to download past releases.](#)

Technical notes

- Survey methodology and design** 1 The survey is conducted on a monthly basis. Questionnaires are sent to a sample of 784 enterprises from a population of 5 136 enterprises. Completed questionnaires are required to be returned to Stats SA within 10 days after the end of the reference month. Email and telephone reminders are used to follow up on non-respondents.
- 2 A stratified random sample was drawn at the SIC four-digit level in April 2023 from Stats SA's statistical business register (SBR). Strata were formed using a combination of Standard Industrial Classification and the measure of size classes for enterprises (see paragraph 3 below).

The Neyman optimal allocation formula given below was used to allocate samples to each stratum:

$$n_h = n * (N_h * S_h) / [\sum (N_i * S_i)].$$

Neyman allocation formula not only allocates sample sizes to each stratum but also calculates the relative precision for each stratum as well as the relative precision for all strata. The relative precision for these strata was 1,2%.

- Sample design and class limits** 3 The land transportation industry is divided into four size groups. All large enterprises (size group one) are completely enumerated. Simple random sampling is applied to medium (size group two) and small (size groups three and four) enterprises. The total value of income of the large enterprises (size group one) is added to the weighted totals of size groups two, three and four to reflect the total value of income.

Measure of size classes (Rand)

Enterprise size	Size group	Lower limit	Upper limit
Very small	4	1 375 366	9 000 000
Small	3	9 000 001	39 000 000
Medium	2	39 000 001	78 000 000
Large	1	78 000 001	

- Sample weighting** 4 For those strata not completely enumerated, the weights to produce estimates are the inverse ratio of the sampling fraction, modified to take account of non-response in the survey. Stratum estimates are calculated and then aggregated with the completely enumerated stratum to form division estimates. These procedures are in line with international best practice.
- Reliability of estimates** 5 Data presented in this publication are based on information obtained from a sample and are, therefore, subject to sampling variability; that is, they may differ from the figures that would have been produced if the data had been obtained from all enterprises in the land transport industry in South Africa. Estimates are subject to sampling and non-sampling errors.
- 6 Inaccuracies may occur because of imperfections in reporting by enterprises and errors made in the collection and processing of the data. Inaccuracies of this kind are referred to as non-sampling errors. Every effort is made to minimise non-sampling errors by careful design of questionnaires, testing them in pilot studies, editing reported data and

implementing efficient operating procedures. Fluctuations may occur in consecutive months as a result of seasonal and economic factors.

- Relative standard error** 7 One measure is the standard error (SE), which indicates the extent to which an estimate might have varied by chance because only a sample of enterprises was used. The relative standard error (RSE) provides an immediate indication of the percentage errors likely to have occurred due to sampling, and thus avoids the need to refer to the size of the estimate.

Estimates of land transport within 95% confidence limits – November 2023

	Lower limit (R million)	Estimate (R million)	Upper limit (R million)	Relative standard error (RSE) %
Freight income	18 050	19 627	21 204	4,0
Passenger income	961	981	999	0,9

- Year-on-year percentage change** 8 The year-on-year percentage change in a variable for any given period is the change between that period and the corresponding period of the previous year, expressed as a percentage of the latter.

- Contribution (percentage points)** 9 The contribution (percentage points) to the annual percentage change for any given period is calculated by multiplying the percentage change of each type of commodity/service by its corresponding weight, divided by 100. The weight is the percentage contribution of each type of commodity/service to total income in the corresponding period of the previous year.

- Seasonal adjustment** 10 Seasonally adjusted estimates are generated each month using the X-12-ARIMA Seasonal Adjustment Program developed by the United States Census Bureau. Seasonal adjustment is a means of removing the estimated effects of normal seasonal variation from the series so that the effects of other influences on the series can be recognised more clearly. Seasonal adjustment does not aim to remove irregular or non-seasonal influences which may be present in any particular month. Influences that are volatile or unsystematic can still make it difficult to interpret the movement of the series even after adjustment for seasonal variations. Therefore, the month-to-month movements of seasonally adjusted estimates may not be reliable indicators of trend behaviour. The X-12-ARIMA procedure for land transportation is described in more detail on the Stats SA website at:
[Click to download seasonal adjustment land transport February 2022.](#)

- Trend cycle** 11 The trend is the long-term pattern or movement of a time series. The X-12-ARIMA Seasonal Adjustment Program is used for smoothing seasonally adjusted estimates to estimates of the underlying trend cycle.

Glossary

Enterprise An enterprise is a legal entity or a combination of legal units that includes and directly controls all functions necessary to carry out its activities.

Industry An industry is made up of enterprises engaged in the same or similar kinds of economic activity. Industries are defined in the *System of National Accounts* (SNA) in the same way as in the *Standard Industrial Classification of All Economic Activities* (SIC), Fifth Edition, Report No. 09-90-02 of January 1993.

Symbols and abbreviations	GDP	Gross domestic product
	ISIC	International Standard Industrial Classification
	SARS	South African Revenue Service
	SBR	Statistical Business Register
	SIC	Standard Industrial Classification of All Economic Activities
	Stats SA	Statistics South Africa
	VAT	Value-added tax

Technical enquiries

Kagisho Mathabatha Telephone number: (012) 310 2153
Email: kagishoma@statssa.gov.za

Raquel Floris Telephone number: (012) 337 6488
Email: raquelf@statssa.gov.za

General information

Stats SA publishes approximately 300 different statistical releases each year. It is not economically viable to produce them in more than one of South Africa's 12 official languages. Since the releases are used extensively, not only locally but also by international economic and social-scientific communities, Stats SA releases are published in English only.

Stats SA has copyright on this publication. Users may apply the information as they wish, provided that they acknowledge Stats SA as the source of the basic data wherever they process, apply, utilise, publish or distribute the data: and also that they specify that the relevant application and analysis (where applicable) result from their own processing of the data.

Advance release calendar

A release calendar is disseminated on www.statssa.gov.za.

Stats SA products

A complete set of Stats SA publications is available at the Stats SA Library and the following libraries:

National Library of South Africa, Pretoria Division
National Library of South Africa, Cape Town Division
Natal Society Library, Pietermaritzburg
Library of Parliament, Cape Town
Bloemfontein Public Library
Johannesburg Public Library
Eastern Cape Library Services, Qonce
Central Regional Library, Polokwane
Central Reference Library, Mbombela
Central Reference Collection, Kimberley
Central Reference Library, Mmabatho

Stats SA also provides a subscription service.

Electronic services

A large range of data is available via online services. For more details about our electronic services, contact Stats SA's user information service at (012) 310 8600.

You can visit us on the internet at: www.statssa.gov.za.

General enquiries

User information services Telephone number: (012) 310 8600
Email: info@statssa.gov.za

Orders/subscription services Telephone number: (012) 310 8619
Email: millies@statssa.gov.za

Postal address Private Bag X44, Pretoria, 0001

Produced by Stats SA