



The South Africa I know, the home I understand

# Statistical release

## P7162

### Land transport survey (Preliminary)

June 2014

The results published in the next publication (July 2014) will be based on a new sample. This is an annual procedure which typically affects the levels of payload, passenger journeys and income at current prices. To avoid breaks in time series and to preserve historical growth rates, historical levels will be revised (i.e. they will be linked to the estimates based on the new sample).

**Embargoed until:**  
**18 August 2014**  
**11:30**

**Enquiries:**

User Information Services  
(012) 310 8600

**Forthcoming issue:**

July 2014

**Expected release date:**

22 September 2014

**Contents**

**Freight transportation: results for June 2014.....2**

    Table A – Year-on-year percentage change in freight transportation (income at current prices).....2

    Table B – Freight transportation income at current prices for the latest three months by type of commodity....2

    Figure 1 – Freight transportation: year-on-year percentage change in payload.....3

**Passenger transportation: results for June 2014.....3**

    Table C – Year-on-year percentage change in passenger transportation (income at current prices).....3

    Figure 2 – Passenger transportation: year-on-year percentage change in passenger journeys.....3

**Tables .....4**

    Table 1 – Freight transportation (income at current prices).....4

    Table 2 – Year-on-year percentage change in freight transportation (income at current prices) .....4

    Table 3 – Freight transportation income at current prices by type of commodity (R million).....5

    Table 4 – Year-on-year percentage change in freight transportation income at current prices by type of commodity .....5

    Table 5 – Contribution of each type of commodity to the year-on-year percentage change in freight transportation income at current prices (percentage points).....5

    Table 6 – Passenger transportation (income at current prices).....6

    Table 7 – Year-on-year percentage change in passenger transportation (income at current prices) .....6

**Survey information .....7**

**Technical notes.....8**

**Glossary .....9**

**Technical enquiries .....9**

**General information.....10**

## Freight transportation: results for June 2014

**Table A – Year-on-year percentage change in freight transportation (income at current prices)**

	Jan-14	Feb-14	Mar-14	Apr-14	May-14	Jun-14
Freight payload	-1,5	-4,1	0,8	6,0	7,6	7,4
Freight income	9,5	5,0	8,8	7,4	10,0	13,3

The volume of goods transported (payload) increased by 7,4% in June 2014 compared with June 2013. The corresponding income increased by 13,3% over the same period.

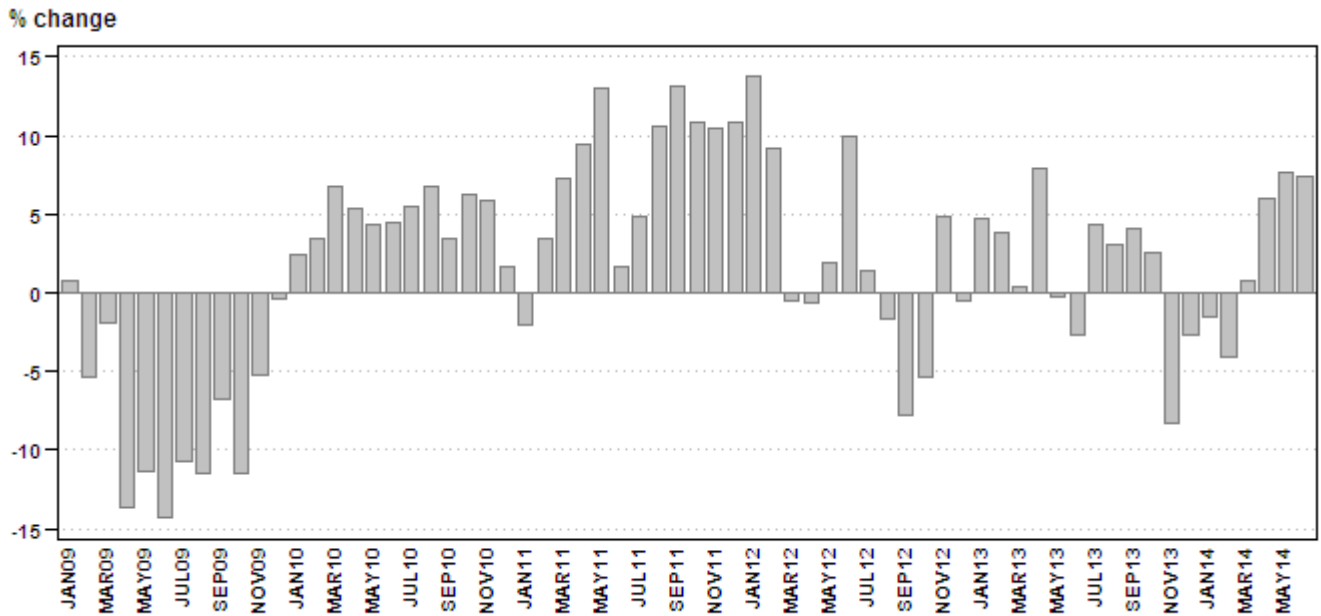
**Table B – Freight transportation income at current prices for the latest three months by type of commodity**

Type of commodity	Apr – Jun 2013 (R million)	Weight	Apr – Jun 2014 (R million)	% change between Apr – Jun 2013 and Apr – Jun 2014	Contribution (% points) to the total % change
Agriculture and forestry primary products	1 902	7,3	2 113	11,1	0,8
Primary mining and quarrying products	8 245	31,5	9 993	21,2	6,7
Manufactured food, beverages and tobacco products	3 717	14,2	3 715	-0,1	0,0
Textiles, clothing and leather goods	364	1,4	355	-2,5	0,0
Chemicals, coke, petroleum, rubber, plastic and other mineral products	1 941	7,4	2 179	12,3	0,9
Basic metals and fabricated metal products	1 425	5,4	1 434	0,6	0,0
Non-metallic products	988	3,8	1 065	7,8	0,3
Electrical machinery, transport machinery and equipment	499	1,9	609	22,0	0,4
Motor vehicles, parts and accessories	777	3,0	734	-5,5	-0,2
Paper and paper products	421	1,6	457	8,6	0,1
Commercial products	636	2,4	614	-3,5	-0,1
Used household and office products	275	1,1	260	-5,5	-0,1
Containers	1 797	6,9	1 848	2,8	0,2
Parcels	501	1,9	491	-2,0	0,0
Other freight	2 687	10,3	2 987	11,2	1,2
<b>Total income</b>	<b>26 179</b>	<b>100,0</b>	<b>28 853</b>	<b>10,2</b>	<b>10,2</b>

Income from freight transportation increased by 10,2% in the second quarter of 2014 compared with the second quarter of 2013. The main contributors to this increase were:

- primary mining and quarrying products (21,2% and contributing 6,7 percentage points); and
- 'other' freight (11,2% and contributing 1,2 percentage points) – see Table B.

**Figure 1 – Freight transportation: year-on-year percentage change in payload**



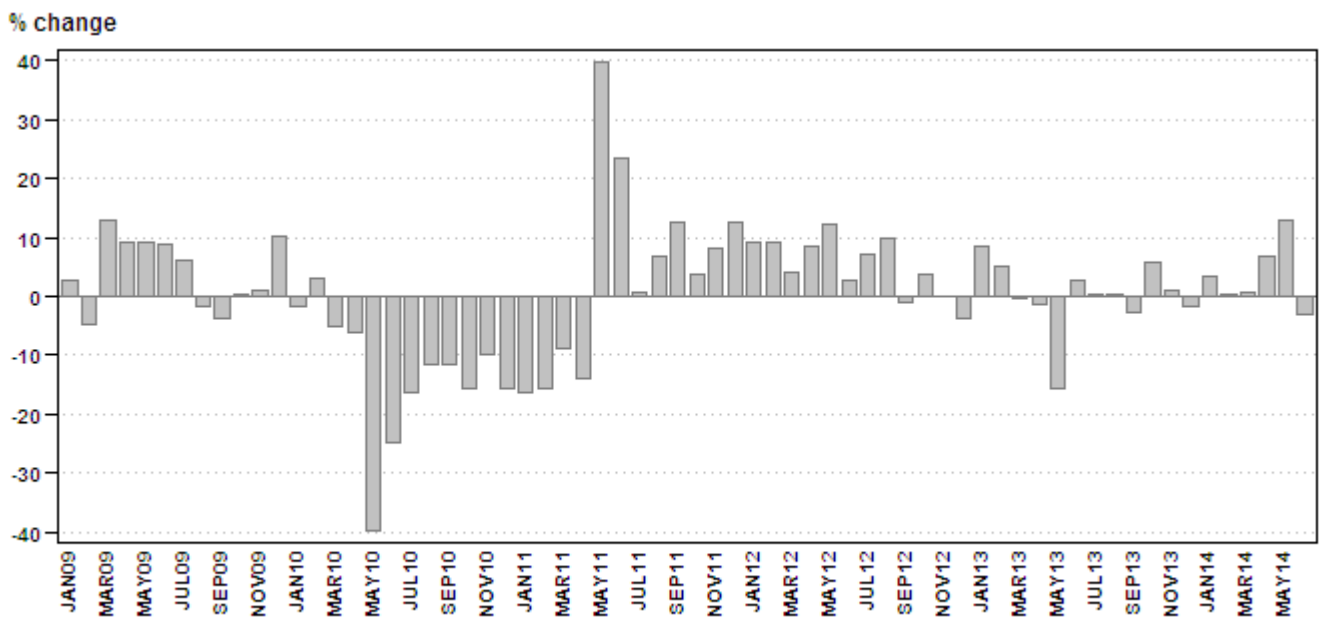
**Passenger transportation: results for June 2014**

**Table C – Year-on-year percentage change in passenger transportation (income at current prices)**

	Jan-14	Feb-14	Mar-14	Apr-14	May-14	Jun-14
Passenger journeys	3,5	0,3	0,7	6,8	12,8	-2,9
Passenger income	13,0	7,6	9,5	24,4	34,7	6,8

The number of passenger journeys decreased by 2,9% in June 2014 compared with June 2013. The corresponding income increased by 6,8% over the same period.

**Figure 2 – Passenger transportation: year-on-year percentage change in passenger journeys**



PJ Lehohla  
 Statistician-General

**Tables**

**Table 1 – Freight transportation (income at current prices)**

Year and month 1/		Rail		Road		Total	
		Payload (000 tons)	Income (R million)	Payload (000 tons)	Income (R million)	Payload (000 tons)	Income (R million)
<b>2013</b>	Jan	17 145	2 506	41 472	5 282	58 617	7 788
	Feb	18 942	2 758	43 484	5 565	62 426	8 323
	Mar	17 223	2 478	42 825	5 482	60 048	7 960
	Apr	17 857	2 783	43 724	6 128	61 581	8 911
	May	14 724	2 425	45 407	6 277	60 131	8 702
	Jun	18 400	2 875	42 228	5 691	60 628	8 566
	Jul	18 665	2 864	45 602	6 137	64 267	9 001
	Aug	18 373	2 944	44 951	6 214	63 324	9 158
	Sep	18 623	2 963	43 813	5 920	62 436	8 883
	Oct	18 358	2 792	43 797	6 194	62 155	8 987
	Nov	18 057	2 938	45 068	6 529	63 125	9 467
	Dec	17 217	2 650	38 422	5 596	55 639	8 246
	<b>Total</b>	<b>213 584</b>	<b>32 976</b>	<b>520 793</b>	<b>71 015</b>	<b>734 377</b>	<b>103 992</b>
<b>2014</b>	Jan	17 973	2 872	39 782	5 652	57 755	8 524
	Feb	17 090	2 715	42 752	6 025	59 842	8 740
	Mar	16 824	2 609	43 708	6 049	60 533	8 658
	Apr	19 433	3 228	45 846	6 346	65 280	9 574
	May	15 426	2 608	49 280	6 965	64 706	9 573
	Jun	19 015	3 101	46 104	6 605	65 119	9 706

1/ Latest month is preliminary.

**Table 2 – Year-on-year percentage change in freight transportation (income at current prices)**

Year and month		Rail		Road		Total	
		Payload	Income	Payload	Income	Payload	Income
<b>2013</b>	Jan	2,9	13,2	5,4	6,8	4,7	8,8
	Feb	8,2	14,6	2,0	2,2	3,8	6,0
	Mar	-1,8	5,2	1,3	2,3	0,4	3,2
	Apr	4,6	16,9	9,3	18,9	7,9	18,3
	May	-4,5	12,4	1,3	14,0	-0,2	13,5
	Jun	3,4	17,7	-5,2	2,0	-2,7	6,8
	Jul	2,4	12,0	5,3	11,0	4,4	11,3
	Aug	9,0	11,8	0,8	8,5	3,0	9,5
	Sep	-0,4	3,9	6,2	11,9	4,1	9,1
	Oct	12,4	13,3	-1,1	5,5	2,6	7,8
	Nov	-2,1	11,1	-10,5	-1,3	-8,3	2,2
	Dec	1,3	5,0	-4,3	5,1	-2,7	5,1
	<b>Total</b>	<b>2,9</b>	<b>11,3</b>	<b>0,6</b>	<b>7,0</b>	<b>1,3</b>	<b>8,4</b>
<b>2014</b>	Jan	4,8	14,6	-4,1	7,0	-1,5	9,5
	Feb	-9,8	-1,6	-1,7	8,3	-4,1	5,0
	Mar	-2,3	5,3	2,1	10,3	0,8	8,8
	Apr	8,8	16,0	4,9	3,6	6,0	7,4
	May	4,8	7,5	8,5	11,0	7,6	10,0
	Jun	3,3	7,9	9,2	16,1	7,4	13,3

**Table 3 – Freight transportation income at current prices by type of commodity (R million)**

Type of commodity	Jan-14	Feb-14	Mar-14	Apr-14	May-14	Jun-14 1/
Agriculture and forestry primary products	563	625	586	627	749	737
Primary mining and quarrying products	2 928	2 801	3 029	3 548	3 108	3 337
Manufactured food, beverages and tobacco products	1 148	1 208	1 065	1 162	1 237	1 316
Textiles, clothing and leather products	101	115	110	113	121	121
Chemicals, coke, petroleum, rubber, plastic and other mineral products	572	595	667	691	746	742
Basic metals and fabricated metal products	449	466	444	490	479	465
Non-metallic products	275	323	294	342	353	370
Electrical machinery, transport machinery and equipment	199	234	210	203	211	195
Motor vehicles, parts and accessories	237	247	230	238	245	251
Paper and paper products	153	144	145	151	154	152
Commercial products	195	194	187	208	199	207
Used household and office products	93	102	83	89	81	90
Containers	548	611	576	620	631	597
Parcels	143	168	157	157	176	158
Other freight	919	906	874	935	1 083	969
<b>Total</b>	<b>8 524</b>	<b>8 740</b>	<b>8 658</b>	<b>9 574</b>	<b>9 573</b>	<b>9 706</b>

1/ Preliminary.

**Table 4 – Year-on-year percentage change in freight transportation income at current prices by type of commodity**

Type of commodity	Jan-14	Feb-14	Mar-14	Apr-14	May-14	Jun-14
Agriculture and forestry primary products	11,7	25,0	12,7	2,8	14,7	15,3
Primary mining and quarrying products	7,0	-5,5	13,6	19,6	24,0	20,4
Manufactured food, beverages and tobacco products	6,1	5,3	-3,2	-11,6	-9,6	27,4
Textiles, clothing and leather products	1,0	7,5	-7,6	-21,5	3,4	17,5
Chemicals, coke, petroleum, rubber, plastic and other mineral products	-11,0	-5,0	0,8	11,5	11,7	13,6
Basic metals and fabricated metal products	16,0	6,2	11,0	8,6	-1,2	-4,9
Non-metallic products	5,4	15,8	2,4	3,0	10,0	10,4
Electrical machinery, transport machinery and equipment	41,1	36,8	32,9	20,1	31,1	15,4
Motor vehicles, parts and accessories	15,6	2,9	-5,7	-15,3	-6,5	7,3
Paper and paper products	26,4	5,9	3,6	7,9	6,9	10,9
Commercial products	16,8	5,4	2,2	-1,9	-7,9	-0,5
Used household and office products	-12,3	-3,8	-13,5	-8,2	-5,8	-2,2
Containers	3,2	9,3	8,7	5,1	2,3	1,2
Parcels	2,1	8,4	-0,6	-7,6	2,3	-0,6
Other freight	39,0	27,6	25,6	15,0	17,5	1,8
<b>Total</b>	<b>9,5</b>	<b>5,0</b>	<b>8,8</b>	<b>7,4</b>	<b>10,0</b>	<b>13,3</b>

**Table 5 – Contribution of each type of commodity to the year-on-year percentage change in freight transportation income at current prices (percentage points)**

Type of commodity	Jan-14	Feb-14	Mar-14	Apr-14	May-14	Jun-14
Agriculture and forestry primary products	0,8	1,5	0,8	0,2	1,1	1,1
Primary mining and quarrying products	2,5	-2,0	4,6	6,5	6,9	6,6
Manufactured food, beverages and tobacco products	0,8	0,7	-0,4	-1,7	-1,5	3,3
Textiles, clothing and leather products	0,0	0,1	-0,1	-0,3	0,0	0,2
Chemicals, coke, petroleum, rubber, plastic and other mineral products	-0,9	-0,4	0,1	0,8	0,9	1,0
Basic metals and fabricated metal products	0,8	0,3	0,6	0,4	-0,1	-0,3
Non-metallic products	0,2	0,5	0,1	0,1	0,4	0,4
Electrical machinery, transport machinery and equipment	0,7	0,8	0,7	0,4	0,6	0,3
Motor vehicles, parts and accessories	0,4	0,1	-0,2	-0,5	-0,2	0,2
Paper and paper products	0,4	0,1	0,1	0,1	0,1	0,2
Commercial products	0,4	0,1	0,1	0,0	-0,2	0,0
Used household and office products	-0,2	0,0	-0,2	-0,1	-0,1	0,0
Containers	0,2	0,6	0,6	0,3	0,2	0,1
Parcels	0,0	0,2	0,0	-0,1	0,0	0,0
Other freight	3,3	2,4	2,2	1,4	1,9	0,2
<b>Total</b>	<b>9,5</b>	<b>5,0</b>	<b>8,8</b>	<b>7,4</b>	<b>10,0</b>	<b>13,3</b>

**Table 6 – Passenger transportation (income at current prices)**

Year and month 1/		Rail		Road		Total	
		Passenger journeys (000)	Income (R million)	Passenger journeys (000)	Income (R million)	Passenger journeys (000)	Income (R million)
2013	Jan	42 333	225	25 192	606	67 525	831
	Feb	48 897	250	27 454	591	76 351	841
	Mar	49 397	259	28 348	651	77 745	910
	Apr	45 736	233	21 216	501	66 952	734
	May	46 840	232	17 965	437	64 805	669
	Jun	49 207	232	25 687	636	74 894	868
	Jul	45 087	238	27 218	656	72 305	894
	Aug	50 134	259	28 158	640	78 292	899
	Sep	47 091	251	27 264	664	74 355	915
	Oct	52 144	277	29 320	677	81 464	954
	Nov	47 730	255	28 517	655	76 247	910
	Dec	34 831	215	22 449	649	57 280	864
	<b>Total</b>	<b>559 427</b>	<b>2 926</b>	<b>308 788</b>	<b>7 363</b>	<b>868 215</b>	<b>10 289</b>
2014	Jan	43 970	266	25 905	673	69 875	939
	Feb	49 223	274	27 391	631	76 614	905
	Mar	49 413	276	28 850	720	78 263	996
	Apr	46 124	256	25 414	657	71 538	913
	May	47 016	254	26 068	647	73 084	901
	Jun	44 618	243	28 069	684	72 687	927

1/ Latest month is preliminary.

**Table 7 – Year-on-year percentage change in passenger transportation (income at current prices)**

Year and month		Rail		Road		Total	
		Passenger journeys	Income	Passenger journeys	Income	Passenger journeys	Income
2013	Jan	11,6	27,8	3,8	12,2	8,6	16,1
	Feb	4,4	30,9	6,5	10,9	5,2	16,2
	Mar	-1,4	28,2	1,3	13,2	-0,4	17,1
	Apr	6,1	12,0	-14,3	-12,9	-1,3	-6,3
	May	-3,7	5,0	-36,2	-25,0	-15,6	-16,8
	Jun	6,5	8,9	-3,9	8,7	2,7	8,8
	Jul	-1,6	8,7	3,0	11,0	0,1	10,4
	Aug	-0,6	11,6	2,1	7,7	0,4	8,8
	Sep	-1,9	12,6	-4,2	2,6	-2,8	5,2
	Oct	7,0	17,4	3,4	8,5	5,7	10,9
	Nov	-0,6	9,9	3,5	7,6	0,9	8,2
	Dec	0,1	9,1	-4,0	2,5	-1,6	4,1
	<b>Total</b>	<b>2,0</b>	<b>14,7</b>	<b>-3,3</b>	<b>3,9</b>	<b>0,0</b>	<b>6,7</b>
2014	Jan	3,9	18,2	2,8	11,1	3,5	13,0
	Feb	0,7	9,6	-0,2	6,8	0,3	7,6
	Mar	0,0	6,6	1,8	10,6	0,7	9,5
	Apr	0,8	9,9	19,8	31,1	6,8	24,4
	May	0,4	9,5	45,1	48,1	12,8	34,7
	Jun	-9,3	4,7	9,3	7,5	-2,9	6,8

## Survey information

- Introduction** 1 Statistics South Africa (Stats SA) conducts a monthly survey of the land transportation industry, covering passenger and freight transportation by rail and road (see paragraph 4 below). This survey is based on a sample drawn from the 2013 business sampling frame (BSF) that contains businesses registered for value added tax (VAT) and income tax.
- 2 In order to improve timeliness, some information for the latest month had to be estimated due to late response. These estimates will be revised in future statistical releases as soon as information becomes available. Published land transportation income estimates exclude VAT.
- Purpose of the survey** 3 The results of the monthly land transport survey are used to compile estimates of the gross domestic product (GDP) and its components, which are used in monitoring the state of the economy and formulation of economic policy. These statistics are also used in the analysis of comparative business and industry performance.
- Scope of the survey** 4 This survey covers enterprises involved in land transportation according to the following type of transportation:
- railway transport (including passenger and freight transportation);
  - 'other' scheduled passenger land transport – urban, suburban and inter-urban bus and coach passenger lines and school buses;
  - 'other' non-scheduled passenger land transport – safaris and sightseeing bus tours, metered taxis and 'other' passenger transport including renting of motor cars with drivers; and
  - freight transport by road.
- Exclusions** 5 Passenger transportation excludes:
- minibus taxis;
  - metropolitan buses (including the Bus Rapid Transport system – BRT); and
  - rental of private cars/buses without drivers.
- Freight transportation excludes:
- renting of trucks without drivers; and
  - in-house transportation.
- Classification** 6 The 1993 edition of the *Standard Industrial Classification of all Economic Activities* (SIC), Fifth Edition, Report No. 09-90-02, was used to classify the statistical units in the survey. The SIC is based on the 1990 *International Standard Industrial Classification of all Economic Activities* (ISIC) with suitable adaptations for local conditions. Statistics in this publication are presented at SIC division (two-digit) level. Each enterprise is classified to the industry which reflects its predominant activity.
- Collection rate** 7 The preliminary collection rate for the survey on land transportation for June 2014 was 89,7%. The improved collection rate for May 2014 was 95,2%.
- Statistical unit** 8 The statistical unit for which information is compiled and published is an enterprise, defined as a legal unit or a combination of legal units that includes and directly controls all functions necessary to carry out its income activities. The statistical units are derived from and linked to the South African Revenue Service (SARS) administrative data.
- Revised figures** 9 Revised figures are mainly due to late submission of data to Stats SA, or respondents reporting revisions or corrections to their figures. Preliminary figures, as indicated in the relevant tables, are subject to change and when revised will not be indicated as such.





- Reliability of estimates**
- 5 Data presented in this publication are based on information obtained from a sample and are, therefore, subject to sampling variability; that is, they may differ from the figures that would have been produced if the data had been obtained from all enterprises in the land transport industry in South Africa. Estimates are subject to sampling and non-sampling errors.
  - 6 Inaccuracies may occur because of imperfections in reporting by enterprises and errors made in the collection and processing of the data. Inaccuracies of this kind are referred to as non-sampling errors. Every effort is made to minimise non-sampling errors by careful design of questionnaires, testing them in pilot studies, editing reported data and implementing efficient operating procedures. Fluctuations may occur in consecutive months as a result of seasonal and economic factors.
- Year-on-year percentage change**
- 7 The year-on-year percentage change in a variable for any given period is the change between that period and the corresponding period of the previous year, expressed as a percentage of the latter.
- Contribution (percentage points)**
- 8 The contribution (percentage points) to the annual percentage change for any given period is calculated by multiplying the percentage change of each type of commodity/service by its corresponding weight, divided by 100. The weight is the percentage contribution of each type of commodity/service to total income in the corresponding period of the previous year.

## Glossary

- Enterprise** An enterprise is a legal entity or a combination of legal units that includes and directly controls all functions necessary to carry out its sales activities.
- Industry** An industry is made up of enterprises engaged in the same or similar kinds of economic activity. Industries are defined in the *System of National Accounts (SNA)* in the same way as in the *Standard Industrial Classification of all Economic Activities, Fifth Edition, Report No. 09-90-02 of January 1993 (SIC)*.
- Symbols and abbreviations**
- |          |   |
|----------|---|
| BSF      | Business sampling frame                                       |
| GDP      | Gross domestic product  |
| ISIC     | International Standard Industrial Classification              |
| SIC      | Standard Industrial Classification of all Economic Activities |
| SARS     | South African Revenue Service                                 |
| Stats SA | Statistics South Africa                                       |
| VAT      | Value added tax   |

## Technical enquiries

- Ho Chun Cheung** Telephone number: (012) 310 6360  
Email: hochunc@statssa.gov.za
- Keshnee Govender** Telephone number: (012) 310 8423  
Email: keshneeg@statssa.gov.za

## General information

Stats SA publishes approximately 300 different statistical releases each year. It is not economically viable to produce them in more than one of South Africa's eleven official languages. Since the releases are used extensively, not only locally but also by international economic and social-scientific communities, Stats SA releases are published in English only.

Stats SA has copyright on this publication. Users may apply the information as they wish, provided that they acknowledge Stats SA as the source of the basic data wherever they process, apply, utilise, publish or distribute the data: and also that they specify that the relevant application and analysis (where applicable) result from their own processing of the data.

## Advanced release calendar

An advanced release calendar is disseminated on [www.statssa.gov.za](http://www.statssa.gov.za)

## Stats SA products

A complete set of Stats SA publications is available at the Stats SA Library and the following libraries:

National Library of South Africa, Pretoria Division  
National Library of South Africa, Cape Town Division  
Natal Society Library, Pietermaritzburg  
Library of Parliament, Cape Town  
Bloemfontein Public Library  
Johannesburg Public Library  
Eastern Cape Library Services, King William's Town  
Central Regional Library, Polokwane  
Central Reference Library, Mbombela  
Central Reference Collection, Kimberley  
Central Reference Library, Mmabatho

Stats SA also provides a subscription service.

## Electronic services

A large range of data is available via online services. For more detail about our electronic services, contact Stats SA's user information service at (012) 310 8600.

You can visit us on the internet at: [www.statssa.gov.za](http://www.statssa.gov.za)

## General enquiries

User information services	Telephone number: (012) 310 8600 Email address: <a href="mailto:info@statssa.gov.za">info@statssa.gov.za</a>
Orders/subscription services	Telephone number: (012) 310 8044 Email address: <a href="mailto:magdaj@statssa.gov.za">magdaj@statssa.gov.za</a>
Postal address	Private Bag X44, Pretoria, 0001

*Produced by Stats SA*