



your leading partner in quality statistics

Statistical release

P7162

Land transport survey (Preliminary)

January 2013

Embargoed until:
18 March 2013
11:30

Enquiries:

User Information Services
(012) 310 8600

Forthcoming issue:

February 2013

Expected release date:

22 April 2013

Contents

Freight transportation: results for January 2013 3

 Table A – Year-on-year percentage change in freight transportation (income at current prices)3

 Table B – Freight transportation income at current prices for the latest three months by type of commodity3

 Figure 1 – Freight transportation: year-on-year percentage change in payload.....4

Passenger transportation: results for January 2013 4

 Table C – Year-on-year percentage change in passenger transportation (income at current prices)4

 Figure 2 – Passenger transportation: year-on-year percentage change in passenger journeys4

Tables..... 5

 Table 1 – Freight transportation (income at current prices)5

 Table 2 – Year-on-year percentage change in freight transportation (income at current prices)5

 Table 3 – Freight transportation income at current prices by type of commodity (R million)6

 Table 4 – Year-on-year percentage change in freight transportation income at current prices by type of commodity6

 Table 5 – Contribution of each type of commodity to the year-on-year percentage change in freight transportation income at current prices (percentage points).....6

 Table 6 – Passenger transportation (income at current prices)7

 Table 7 – Year-on-year percentage change in passenger transportation (income at current prices)7

Annexure A – Comparison between the old and new layouts 8

Survey information 10

Technical notes..... 11

Glossary..... 12

Technical enquiries 12

General information..... 13

Please note the new layout of this statistical release – see Annexure A.

Freight transportation: results for January 2013

Table A – Year-on-year percentage change in freight transportation (income at current prices)

	Aug-12	Sep-12	Oct-12	Nov-12	Dec-12	Jan-13
Freight payload	-1,3	-6,8	-4,6	4,1	-0,5	2,2
Freight income	4,7	-0,4	2,3	10,2	4,2	8,1

The volume of goods transported (payload) increased by 2,2% in January 2013 compared with January 2012. The corresponding income increased by 8,1% over the same period.

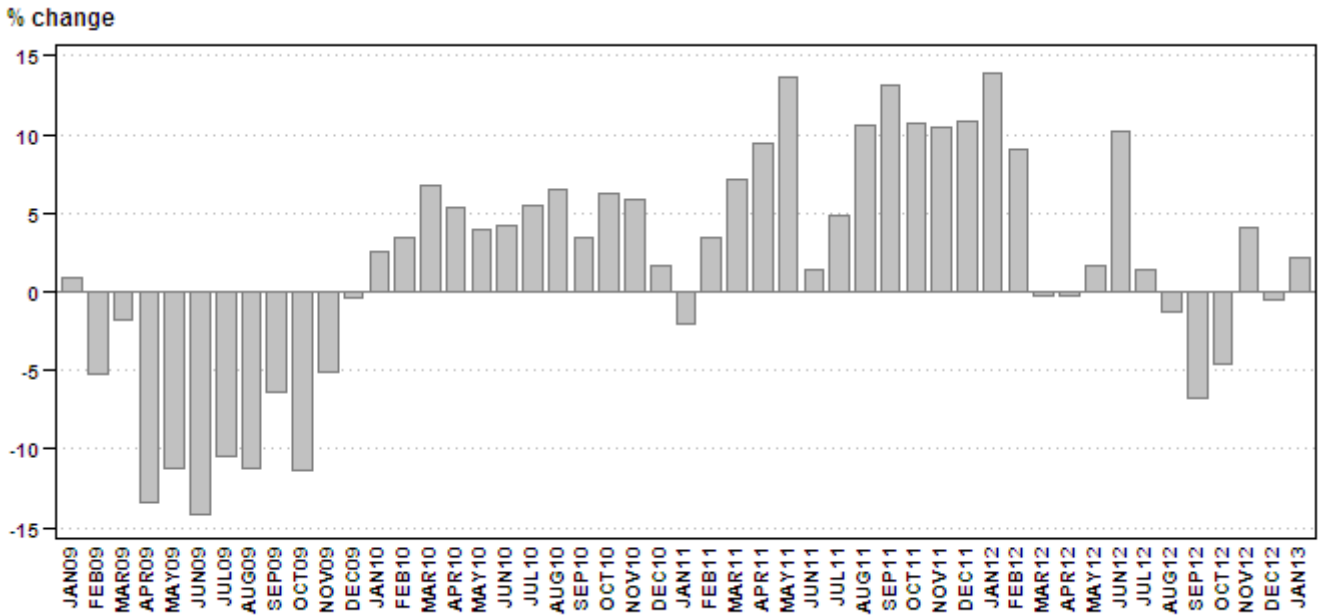
Table B – Freight transportation income at current prices for the latest three months by type of commodity

Type of commodity	Nov 2011 – Jan 2012 (R million)	Weight	Nov 2012 – Jan 2013 (R million)	% change between Nov 2011 – Jan 2012 and Nov 2012 – Jan 2013	Contribution (% points) to the total % change
Agriculture and forestry primary products	1 647	7,2	1 537	-6,7	-0,5
Primary mining and quarrying products	7 268	31,9	7 986	9,9	3,2
Manufactured food, beverages and tobacco products	3 366	14,8	3 722	10,6	1,6
Textiles, clothing and leather goods	298	1,3	381	27,9	0,4
Chemicals, coke, petroleum, rubber, plastic and other mineral products	1 917	8,4	1 979	3,2	0,3
Basic metals and fabricated metal products	1 297	5,7	1 232	-5,0	-0,3
Non-metallic products	856	3,8	825	-3,6	-0,1
Electrical machinery, transport machinery and equipment	534	2,3	615	15,2	0,3
Motor vehicles, parts and accessories	613	2,7	666	8,6	0,2
Paper and paper products	417	1,8	400	-4,1	-0,1
Commercial products	710	3,1	673	-5,2	-0,2
Used household and office products	204	0,9	231	13,2	0,1
Containers	1 073	4,7	1 285	19,8	0,9
Parcels	416	1,8	484	16,3	0,3
Other freight	2 148	9,4	2 477	15,3	1,4
Total income	22 762	100,0	24 490	7,6	7,6

Income from freight transportation increased by 7,6% in the three months ended January 2013 compared with the three months ended January 2012. The main contributors to this increase were:

- primary mining and quarrying products (9,9% and contributing 3,2 percentage points);
- manufactured food, beverages and tobacco products (10,6% and contributing 1,6 percentage points); and
- 'other' freight (15,3% and contributing 1,4 percentage points) – see Table B.

Figure 1 – Freight transportation: year-on-year percentage change in payload



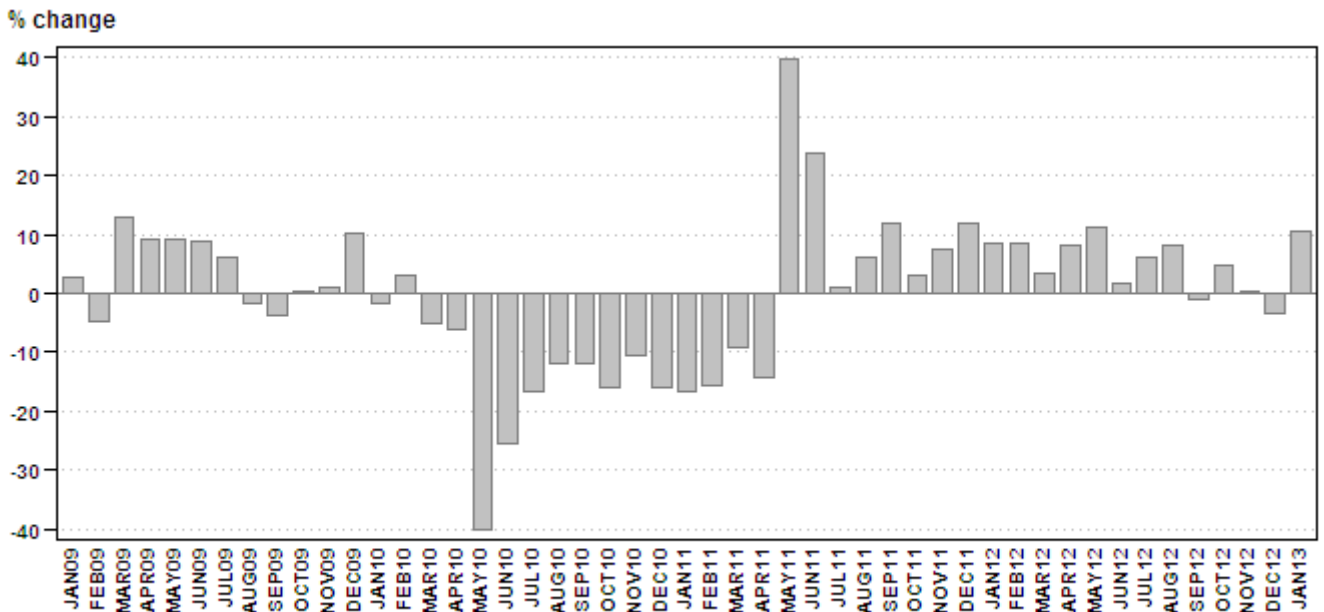
Passenger transportation: results for January 2013

Table C – Year-on-year percentage change in passenger transportation (income at current prices)

	Aug-12	Sep-12	Oct-12	Nov-12	Dec-12	Jan-13
Passenger journeys	8,3	-0,9	4,8	0,3	-3,5	10,7
Passenger income	13,5	12,9	17,7	15,5	14,2	17,4

The number of passenger journeys increased by 10,7% in January 2013 compared with January 2012. The corresponding income increased by 17,4% over the same period.

Figure 2 – Passenger transportation: year-on-year percentage change in passenger journeys



Tables

Table 1 – Freight transportation (income at current prices)

Year and month 1/		Rail		Road		Total	
		Payload (000 tons)	Income (R million)	Payload (000 tons)	Income (R million)	Payload (000 tons)	Income (R million)
2012	Jan	16 809	2 226	36 752	4 819	53 561	7 045
	Feb	17 673	2 421	39 821	5 306	57 494	7 727
	Mar	17 699	2 369	39 493	5 223	57 192	7 592
	Apr	17 220	2 394	37 536	5 039	54 756	7 434
	May	15 570	2 169	41 777	5 359	57 347	7 528
	Jun	17 953	2 456	41 481	5 428	59 434	7 884
	Jul	18 390	2 572	40 327	5 359	58 718	7 931
	Aug	17 016	2 648	41 811	5 604	58 827	8 252
	Sep	18 874	2 867	39 026	5 220	57 900	8 087
	Oct	16 455	2 473	41 884	5 738	58 339	8 212
	Nov	18 615	2 660	46 612	6 480	65 227	9 140
	Dec	17 142	2 539	37 533	5 196	54 675	7 735
	Total	209 416	29 794	484 053	64 771	693 470	94 567
2013	Jan	17 288	2 518	37 457	5 097	54 745	7 615

1/ Latest month is preliminary.

Table 2 – Year-on-year percentage change in freight transportation (income at current prices)

Year and month		Rail		Road		Total	
		Payload	Income	Payload	Income	Payload	Income
2012	Jan	18,8	35,6	11,8	13,8	13,9	19,9
	Feb	4,5	3,3	11,2	16,4	9,1	11,9
	Mar	10,4	23,9	-4,4	0,5	-0,3	6,8
	Apr	4,6	11,2	-2,3	0,0	-0,2	3,4
	May	-5,7	-1,9	4,7	4,8	1,7	2,8
	Jun	37,5	32,6	1,5	2,8	10,2	10,5
	Jul	14,3	22,7	-3,5	0,3	1,4	6,6
	Aug	2,9	15,4	-3,0	0,4	-1,3	4,7
	Sep	3,0	18,9	-10,9	-8,6	-6,8	-0,4
	Oct	-9,2	3,3	-2,6	1,9	-4,6	2,3
	Nov	3,3	9,0	4,3	10,7	4,1	10,2
	Dec	-1,1	10,4	-0,2	1,4	-0,5	4,2
	Total	6,0	14,4	0,2	3,3	1,9	6,6
2013	Jan	2,8	13,1	1,9	5,8	2,2	8,1

Table 3 – Freight transportation income at current prices by type of commodity (R million)

Type of commodity	Aug-12	Sep-12	Oct-12	Nov-12	Dec-12	Jan-13 1/
Agriculture and forestry primary products	592	519	553	608	455	474
Primary mining and quarrying products	2 714	2 897	2 578	2 816	2 602	2 568
Manufactured food, beverages and tobacco products	1 149	1 030	1 138	1 421	1 195	1 106
Textiles, clothing and leather products	80	77	83	148	121	112
Chemicals, coke, petroleum, rubber, plastic and other mineral products	621	620	678	729	625	625
Basic metals and fabricated metal products	446	466	445	460	352	420
Non-metallic products	308	279	299	324	265	236
Electrical machinery, transport machinery and equipment	223	209	230	252	184	179
Motor vehicles, parts and accessories	204	207	259	264	198	204
Paper and paper products	144	127	142	160	125	115
Commercial products	227	206	267	285	201	187
Used household and office products	66	61	66	74	78	79
Containers	429	396	428	462	397	426
Parcels	172	170	187	196	151	137
Other freight	875	822	860	943	787	747
Total	8 252	8 087	8 212	9 140	7 735	7 615

1/ Preliminary.

Table 4 – Year-on-year percentage change in freight transportation income at current prices by type of commodity

Type of commodity	Aug-12	Sep-12	Oct-12	Nov-12	Dec-12	Jan-13
Agriculture and forestry primary products	-9,6	-16,8	-9,8	-4,7	-13,5	-1,9
Primary mining and quarrying products	8,9	10,4	-0,1	8,4	11,9	9,5
Manufactured food, beverages and tobacco products	7,9	-10,0	10,0	25,0	-6,3	15,9
Textiles, clothing and leather products	-19,2	-23,8	-21,0	27,6	24,7	31,8
Chemicals, coke, petroleum, rubber, plastic and other mineral products	-1,1	-0,2	7,3	5,3	3,8	0,3
Basic metals and fabricated metal products	-2,0	8,1	-2,6	1,1	-11,6	-5,4
Non-metallic products	3,4	-10,0	-4,2	-5,0	-1,9	-3,7
Electrical machinery, transport machinery and equipment	16,8	4,5	0,9	18,3	6,4	20,9
Motor vehicles, parts and accessories	-1,9	-5,5	17,7	17,9	0,5	6,3
Paper and paper products	4,3	-8,6	-4,7	4,6	-7,4	-10,9
Commercial products	-8,8	-17,3	-0,4	-0,3	-9,0	-7,9
Used household and office products	15,8	17,3	3,1	10,4	1,3	31,7
Containers	4,6	-4,6	4,6	15,8	20,3	23,8
Parcels	17,0	15,6	35,5	21,7	11,9	14,2
Other freight	11,3	-2,6	5,5	16,0	18,5	11,3
Total	4,7	-0,4	2,3	10,2	4,2	8,1

Table 5 – Contribution of each type of commodity to the year-on-year percentage change in freight transportation income at current prices (percentage points)

Type of commodity	Aug-12	Sep-12	Oct-12	Nov-12	Dec-12	Jan-13
Agriculture and forestry primary products	-0,8	-1,3	-0,7	-0,4	-1,0	-0,1
Primary mining and quarrying products	2,8	3,3	0,0	2,6	3,7	3,2
Manufactured food, beverages and tobacco products	1,1	-1,4	1,3	3,4	-1,1	2,2
Textiles, clothing and leather products	-0,2	-0,3	-0,3	0,4	0,3	0,4
Chemicals, coke, petroleum, rubber, plastic and other mineral products	-0,1	0,0	0,6	0,4	0,3	0,0
Basic metals and fabricated metal products	-0,1	0,4	-0,1	0,1	-0,6	-0,3
Non-metallic products	0,1	-0,4	-0,2	-0,2	-0,1	-0,1
Electrical machinery, transport machinery and equipment	0,4	0,1	0,0	0,5	0,1	0,4
Motor vehicles, parts and accessories	-0,1	-0,1	0,5	0,5	0,0	0,2
Paper and paper products	0,1	-0,1	-0,1	0,1	-0,1	-0,2
Commercial products	-0,3	-0,5	0,0	0,0	-0,3	-0,2
Used household and office products	0,1	0,1	0,0	0,1	0,0	0,3
Containers	0,2	-0,2	0,2	0,8	0,9	1,2
Parcels	0,3	0,3	0,6	0,4	0,2	0,2
Other freight	1,1	-0,3	0,6	1,6	1,7	1,1
Total	4,7	-0,4	2,3	10,2	4,2	8,1

Table 6 – Passenger transportation (income at current prices)

Year and month 1/		Rail		Road		Total	
		Passenger journeys (000)	Income (R million)	Passenger journeys (000)	Income (R million)	Passenger journeys (000)	Income (R million)
2012	Jan	37 269	153	23 907	549	61 176	702
	Feb	46 136	166	25 411	541	71 547	707
	Mar	49 324	174	27 564	584	76 888	758
	Apr	42 367	182	24 597	593	66 964	775
	May	47 835	193	27 737	594	75 572	787
	Jun	45 351	184	26 163	583	71 514	767
	Jul	44 891	188	26 075	609	70 966	797
	Aug	49 483	201	26 264	590	75 747	791
	Sep	47 658	198	27 641	659	75 299	857
	Oct	48 603	211	27 967	633	76 570	844
	Nov	47 821	208	26 830	621	74 651	829
	Dec	33 910	169	23 457	641	57 367	810
Total	540 648	2 227	313 613	7 197	854 261	9 424	
2013	Jan	42 148	204	25 591	620	67 739	824

1/ Latest month is preliminary.

Table 7 – Year-on-year percentage change in passenger transportation (income at current prices)

Year and month		Rail		Road		Total	
		Passenger journeys	Income	Passenger journeys	Income	Passenger journeys	Income
2012	Jan	7,6	1,3	9,8	13,0	8,4	10,2
	Feb	13,5	15,3	0,4	8,4	8,5	10,0
	Mar	5,9	8,8	-0,5	0,3	3,5	2,2
	Apr	6,3	24,7	11,2	12,7	8,1	15,3
	May	11,6	29,5	10,7	11,4	11,2	15,4
	Jun	0,8	16,5	3,2	9,2	1,7	10,8
	Jul	5,9	19,0	6,5	12,4	6,1	13,9
	Aug	11,0	24,1	3,6	10,3	8,3	13,5
	Sep	-3,1	13,8	3,3	12,6	-0,9	12,9
	Oct	0,3	22,0	13,7	16,4	4,8	17,7
	Nov	-2,6	21,6	5,9	13,5	0,3	15,5
	Dec	-8,3	11,9	4,4	14,9	-3,5	14,2
Total	3,9	17,4	5,8	11,2	4,6	12,6	
2013	Jan	13,1	33,3	7,0	12,9	10,7	17,4

Annexure A – Comparison between the old and new layouts

Old layout	New layout
Summary tables, graphs and text:	
<p>Table A (freight and passenger transportation)</p> <ul style="list-style-type: none"> • Latest payload and income values (freight transportation) • Latest number of passengers and income values (passenger transportation) • Variety of growth rates (only the latest shown) 	<p>Table A (freight transportation)</p> <ul style="list-style-type: none"> • y/y % change • Latest 6 months <p><i>Note: For payload and income at current prices see new Table 1.</i></p> <p><i>Note: For passenger transportation see new Table C.</i></p>
<p>Table B (freight transportation)</p> <ul style="list-style-type: none"> • Breakdown • 3-month totals (Rm) • 3m y/y % change and %-point contribution 	<p>Table B (freight transportation)</p> <ul style="list-style-type: none"> • Breakdown • 3-month totals (Rm) • 3m y/y % change and %-point contribution
	<p>Figure 1 (freight payload)</p> <ul style="list-style-type: none"> • y/y % change
<p>Table C (passenger transportation)</p> <ul style="list-style-type: none"> • Breakdown • 3-month totals (Rm) • 3m y/y % change and %-point contribution <p><i>Note: Old Table C discontinued.</i></p>	<p>Table C (passenger transportation)</p> <ul style="list-style-type: none"> • y/y % change • Latest 6 months <p><i>Note: For passenger journeys and income at current prices see new Table 6.</i></p> <p><i>Note: 'Passenger journeys' were previously (i.e. old layout) referred to as 'passengers'.</i></p>
	<p>Figure 2 (passenger journeys)</p> <ul style="list-style-type: none"> • y/y % change
Detailed tables:	
<p>Table 1 (freight transportation)</p> <ul style="list-style-type: none"> • Payload • Income at current prices • Latest 36 months 	<p>Table 1 (freight transportation)</p> <ul style="list-style-type: none"> • Payload • Income at current prices • Latest 13 months
<p>Table 2 (passenger transportation)</p> <ul style="list-style-type: none"> • Number of passengers • Income at current prices • Latest 36 months <p><i>Note: See new Table 6.</i></p>	<p>Table 2 (freight transportation)</p> <ul style="list-style-type: none"> • y/y % change in payload and income at current prices <p><i>Note: New table.</i></p>

Old layout	New layout
<p>Table 3 (freight transportation)</p> <ul style="list-style-type: none"> • Breakdown • Latest 24 months (Rm) 	<p>Table 3 (freight transportation)</p> <ul style="list-style-type: none"> • Breakdown • Latest 6 months (Rm)
<p>Table 4 (freight transportation)</p> <ul style="list-style-type: none"> • Payload and income values for latest 3 months and cumulative (year-to-date), and corresponding payload and income values year ago • y/y % change <p><i>Note: Latest 3-month annual % changes – see new Table B. Cumulative (year-to-date) annual % changes discontinued.</i></p>	<p>Table 4 (freight transportation)</p> <ul style="list-style-type: none"> • Breakdown • y/y % change for individual months • Latest 6 months <p><i>Note: New table.</i></p>
<p>Table 5 (passenger transportation)</p> <ul style="list-style-type: none"> • Number of passengers and income values for latest 3 months and cumulative (year-to-date), and corresponding number of passengers and income values year ago • y/y % change <p><i>Note: Latest 3-month and cumulative (year-to-date) annual % changes discontinued.</i></p>	<p>Table 5 (freight transportation)</p> <ul style="list-style-type: none"> • Breakdown • %-point contribution to y/y % change • Latest 6 months <p><i>Note: New table.</i></p>
	<p>Table 6 (passenger transportation)</p> <ul style="list-style-type: none"> • Passenger journeys • Income at current prices • Latest 13 months <p><i>Note: See old Table 2.</i></p>
	<p>Table 7 (passenger transportation)</p> <ul style="list-style-type: none"> • y/y % change in passenger journeys and income at current prices <p><i>Note: New table.</i></p>

Survey information

Introduction	1	<p>Statistics South Africa (Stats SA) conducts a monthly survey of the land transportation industry, covering passenger and freight transportation by rail and road (see paragraph 4 below). This survey is based on a sample drawn from the 2012 business sampling frame (BSF) that contains businesses registered for value added tax (VAT) and income tax.</p> <p>2 In order to improve timeliness, some information for the latest month had to be estimated due to late response. These estimates will be revised in future statistical releases as soon as information becomes available. Published land transportation income estimates exclude VAT.</p>
Purpose of the survey	3	<p>The results of the monthly land transport survey are used to compile estimates of the gross domestic product (GDP) and its components, which are used in monitoring the state of the economy and formulation of economic policy. These statistics are also used in the analysis of comparative business and industry performance.</p>
Scope of the survey	4	<p>This survey covers enterprises involved in land transportation according to the following type of transportation:</p> <ul style="list-style-type: none"> • railway transport (including passenger and freight transportation); • other scheduled passenger land transport – urban, suburban and inter-urban bus and coach passenger lines and school buses; • other non-scheduled passenger land transport – safaris and sightseeing bus tours, metered taxis and other passenger transport including renting of motor cars with drivers; and • freight transport by road.
Exclusions	5	<p>Passenger transportation excludes:</p> <ul style="list-style-type: none"> • minibus taxis; • Gautrain; • metropolitan buses (including the Bus Rapid Transport system – BRT); and • rental of private cars/buses without drivers. <p>Freight transportation excludes:</p> <ul style="list-style-type: none"> • renting of trucks without drivers; and • in-house transportation.
Classification	6	<p>The 1993 edition of the <i>Standard Industrial Classification of all Economic Activities (SIC)</i>, Fifth Edition, Report No. 09-90-02, was used to classify the statistical units in the survey. The SIC is based on the 1990 <i>International Standard Industrial Classification of all Economic Activities (ISIC)</i> with suitable adaptations for local conditions. Statistics in this publication are presented at SIC division (two-digit) level. Each enterprise is classified to the industry which reflects its predominant activity.</p>
Collection rate	7	<p>The preliminary collection rate for the survey on land transportation for January 2013 was 83,6%. The improved collection rate for December 2012 was 89,4%.</p>
Statistical unit	8	<p>The statistical unit for which information is compiled and published is an enterprise, defined as a legal unit or a combination of legal units that includes and directly controls all functions necessary to carry out its income activities. The statistical units are derived from and linked to the South African Revenue Service (SARS) administrative data.</p>
Revised figures	9	<p>Revised figures are mainly due to late submission of data to Stats SA, or respondents reporting revisions or corrections to their figures. Preliminary figures, as indicated in the relevant tables, are subject to change and when revised will not be indicated as such.</p>

- Related publications** 10 Users may also wish to refer to the following publications available from Stats SA -
 - *Bulletin of Statistics* issued quarterly; and
 - *SA Statistics* issued annually.
- Rounding-off of figures** 11 Where figures have been rounded off, discrepancies may occur between sums of the component items and the totals.
- Historical data** 12 Historical land transport data are available on the Stats SA webpage. To access the data electronically, use the following link:
<http://www.statssa.gov.za/timeseriesdata/timeseriesdata.asp>
- Past publications** 13 Past land transport releases are available on the Stats SA webpage. To access the releases electronically, use the following link:
<http://www.statssa.gov.za/publications/statspastfuture.asp?PPN=P7162&SCH=>

Technical notes

- Survey methodology and design** 1 The survey is conducted on a monthly basis. Questionnaires are sent to a sample of about 700 enterprises from a population of about 4 000 enterprises. Completed questionnaires are required to be returned to Stats SA within 10 days after the end of the reference month. Fax and telephone reminders are used to follow up on non-respondents.
- 2 A stratified random sample was drawn at the SIC four-digit level in April 2012 from Stats SA’s business sampling frame (BSF). Strata were formed using a combination of Standard Industrial Classification and the measure of size classes for enterprises (see paragraph 3 below).

The Neyman optimal allocation formula given below was used to allocate samples to each stratum.

$$n_h = N_h S_h / \sum N_h S_h$$

N_h and S_h are the stratum population size and the stratum variance respectively. Neyman allocation formula not only allocates sample sizes to each stratum but also calculates the relative precision for each stratum as well as the relative precision for all strata. The relative precision for these strata did not exceed 0,8%.

- Sample design and class limits** 3 The land transportation industry is divided into four size groups. All large enterprises (size group one) are completely enumerated. Simple random sampling is applied to medium sized (size group two) and to small (size group three and four) enterprises. The total value of income of the large enterprises (size group one) is added to the weighted totals of size groups two, three and four to reflect the total value of income.

Measure of size classes (Rand)

Enterprise size	Size group	Lower limits	Upper limits
Very small	4	0	9 000 000
Small	3	9 000 001	39 000 000
Medium	2	39 000 001	78 000 000
Large	1	78 000 001	

- Sample weighting** 4 For those strata not completely enumerated, the weights to produce estimates are the inverse ratio of the sampling fraction, modified to take account of non-response in the survey. Stratum estimates are calculated and then aggregated with the completely enumerated stratum to form division estimates. These procedures are in line with international best practice.

- Reliability of estimates** **5** Data presented in this publication are based on information obtained from a sample and are, therefore, subject to sampling variability; that is, they may differ from the figures that would have been produced if the data had been obtained from all enterprises in the land transport industry in South Africa. Estimates are subject to sampling and non-sampling errors.
- 6** Inaccuracies may occur because of imperfections in reporting by enterprises and errors made in the collection and processing of the data. Inaccuracies of this kind are referred to as non-sampling errors. Every effort is made to minimise non-sampling errors by careful design of questionnaires, testing them in pilot studies, editing reported data and implementing efficient operating procedures. Fluctuations may occur in consecutive months as a result of seasonal and economic factors.
- Year-on-year percentage change** **7** The year-on-year percentage change in a variable for any given period is the change between that period and the corresponding period of the previous year, expressed as a percentage of the latter.
- Contribution (percentage points)** **8** The contribution (percentage points) to the annual percentage change for any given period is calculated by multiplying the percentage change of each type of commodity/service by its corresponding weight, divided by 100. The weight is the percentage contribution of each type of commodity/service to total income in the corresponding period of the previous year.

Glossary

Enterprise An enterprise is a legal entity or a combination of legal units that includes and directly controls all functions necessary to carry out its sales activities.

Industry An industry is made up of enterprises engaged in the same or similar kinds of economic activity. Industries are defined in the *System of National Accounts (SNA)* in the same way as in the *Standard Industrial Classification of all Economic Activities, Fifth Edition, Report No. 09-90-02 of January 1993 (SIC)*.

Symbols and abbreviations	BSF	Business sampling frame
	GDP	Gross domestic product
	ISIC	International Standard Industrial Classification
	SIC	Standard Industrial Classification of all Economic Activities
	SARS	South African Revenue Service
	Stats SA	Statistics South Africa
VAT	Value added tax	

Technical enquiries

Ho Chun Cheung Telephone number: (012) 310 6360
 Email: hochunc@statssa.gov.za

Keshnee Govender Telephone number: (012) 310 8423
 Email: keshneeg@statssa.gov.za

General information

Stats SA publishes approximately 300 different statistical releases each year. It is not economically viable to produce them in more than one of South Africa's eleven official languages. Since the releases are used extensively, not only locally but also by international economic and social-scientific communities, Stats SA releases are published in English only.

Stats SA has copyright on this publication. Users may apply the information as they wish, provided that they acknowledge Stats SA as the source of the basic data wherever they process, apply, utilise, publish or distribute the data: and also that they specify that the relevant application and analysis (where applicable) result from their own processing of the data.

Advanced release calendar

An advanced release calendar is disseminated on www.statssa.gov.za

Stats SA products

A complete set of Stats SA publications is available at the Stats SA Library and the following libraries:

National Library of South Africa, Pretoria Division
National Library of South Africa, Cape Town Division
Natal Society Library, Pietermaritzburg
Library of Parliament, Cape Town
Bloemfontein Public Library
Johannesburg Public Library
Eastern Cape Library Services, King William's Town
Central Regional Library, Polokwane
Central Reference Library, Nelspruit
Central Reference Collection, Kimberley
Central Reference Library, Mmabatho

Stats SA also provides a subscription service.

Electronic services

A large range of data is available via online services. For more detail about our electronic services, contact Stats SA's user information service at (012) 310 8600.

You can visit us on the Internet at: www.statssa.gov.za

General enquiries

User information services	Telephone number: (012) 310 8600 Email address: info@statssa.gov.za
Orders/subscription services	Telephone number: (012) 310 8358 Email address: magdaj@statssa.gov.za
Postal address	Private Bag X44, Pretoria, 0001

Produced by Stats SA