



stats sa

Department:
Statistics South Africa
REPUBLIC OF SOUTH AFRICA

Private Bag X44, Pretoria, 0001, South Africa, ISibalo House, Koch Street, Salvokop, Pretoria, 0002
www.statssa.gov.za, info@statssa.gov.za, Tel +27 12 310 8911

STATISTICAL RELEASE

P7162

Land transport (Preliminary)

December 2023

Embargoed until:
19 February 2024
11:30

ENQUIRIES:
Raquel Floris
Tel: (012) 337 6488

FORTHCOMING ISSUE:
January 2024

EXPECTED RELEASE DATE:
25 March 2024



Contents

Freight transportation: results for December 2023	2
Table A – Year-on-year percentage change in freight transportation (income at current prices).....	2
Table B – Freight transportation income at current prices for the latest three months by type of commodity.....	2
Table C – Seasonally adjusted payload for the latest three months by type of transport.....	3
Figure 1 – Freight transportation: seasonally adjusted payload	3
Figure 2 – Freight transportation: year-on-year percentage change in payload.....	3
Passenger transportation: results for December 2023	4
Table D – Year-on-year percentage change in passenger transportation (income at current prices).....	4
Table E – Seasonally adjusted passenger journeys for the latest three months by type of transport.....	4
Figure 3 – Passenger transportation: seasonally adjusted passenger journeys	4
Figure 4 – Passenger transportation: year-on-year percentage change in passenger journeys.....	5
Tables	6
Table 1 – Freight transportation (income at current prices)	6
Table 2 – Year-on-year percentage change in freight transportation (income at current prices)	6
Table 3 – Seasonally adjusted freight transportation (income at current prices).....	7
Table 4 – Month-on-month percentage change in seasonally adjusted freight transportation (income at current prices)	7
Table 5 – Freight transportation income at current prices by type of commodity (R million).....	8
Table 6 – Year-on-year percentage change in freight transportation income at current prices by type of commodity.....	8
Table 7 – Contribution of each type of commodity to the year-on-year percentage change in freight transportation income at current prices (percentage points)	8
Table 8 – Passenger transportation (income at current prices).....	9
Table 9 – Year-on-year percentage change in passenger transportation (income at current prices)	9
Table 10 – Seasonally adjusted passenger transportation (income at current prices).....	10
Table 11 – Month-on-month percentage change in seasonally adjusted passenger transportation (income at current prices)	10
Survey information	11
Technical notes	12
Glossary	13
Technical enquiries	14
General information	14

Freight transportation: results for December 2023

Table A – Year-on-year percentage change in freight transportation (income at current prices)

	Jul-23	Aug-23	Sep-23	Oct-23	Nov-23	Dec-23
Freight payload	-4,9	-10,0	0,3	-1,1	3,2	-2,5
Freight income	-4,1	-4,6	4,5	6,2	3,7	3,0

The volume of goods transported (payload) decreased by 2,5% in December 2023 compared with December 2022. The corresponding income increased by 3,0% over the same period.

Table B – Freight transportation income at current prices for the latest three months by type of commodity

Type of commodity	Oct – Dec 2022 (R million)	Weight (%)	Oct – Dec 2023 (R million)	% change between Oct – Dec 2022 and Oct – Dec 2023	Contribution (% points) to the total % change
Agriculture and forestry primary products	3 937	7,2	3 604	-8,5	-0,6
Primary mining and quarrying products	17 166	31,6	19 529	13,8	4,4
Manufactured food, beverages and tobacco products	7 679	14,1	6 613	-13,9	-2,0
Textiles, clothing and leather goods	1 475	2,7	1 554	5,4	0,1
Chemicals, coke, petroleum, rubber, plastic and other mineral products	2 731	5,0	2 632	-3,6	-0,2
Basic metals and fabricated metal products	687	1,3	709	3,2	0,0
Non-metallic products	439	0,8	491	11,8	0,1
Electrical machinery, transport machinery and equipment	958	1,8	1 079	12,6	0,2
Motor vehicles, parts and accessories	1 623	3,0	1 551	-4,4	-0,1
Paper and paper products	314	0,6	308	-1,9	0,0
Commercial products	1 263	2,3	1 247	-1,3	0,0
Used household and office products	1 312	2,4	1 278	-2,6	-0,1
Containers	2 390	4,4	2 636	10,3	0,5
Parcels	1 546	2,8	1 605	3,8	0,1
Other freight	10 870	20,0	11 909	9,6	1,9
Total income	54 390	100,0	56 744	4,3	4,3

Income from freight transportation increased by 4,3% in the fourth quarter of 2023 compared with the fourth quarter of 2022. The main positive contributors to this increase were:

- primary mining and quarrying products (13,8% and contributing 4,4 percentage points); and
- 'other' freight (9,6% and contributing 1,9 percentage points) – see Table B.

Table C – Seasonally adjusted payload for the latest three months by type of transport

Payload	Jul – Sep 2023 (000 tons)	Weight (%)	Oct – Dec 2023 (000 tons)	% change between Jul – Sep 2023 and Oct – Dec 2023	Contribution (% points) to the total % change
Rail	41 832	16,7	41 401	-1,0	-0,2
Road	209 312	83,3	216 299	3,3	2,7
Total	251 144	100,0	257 699	2,6	2,6

Seasonally adjusted payload increased by 2,6% in the fourth quarter of 2023 compared with the third quarter of 2023. Road freight increased by 3,3% (contributing 2,7 percentage points) while rail freight decreased by 1,0% (contributing -0,2 of a percentage point) – see Table C.

Figure 1 – Freight transportation: seasonally adjusted payload

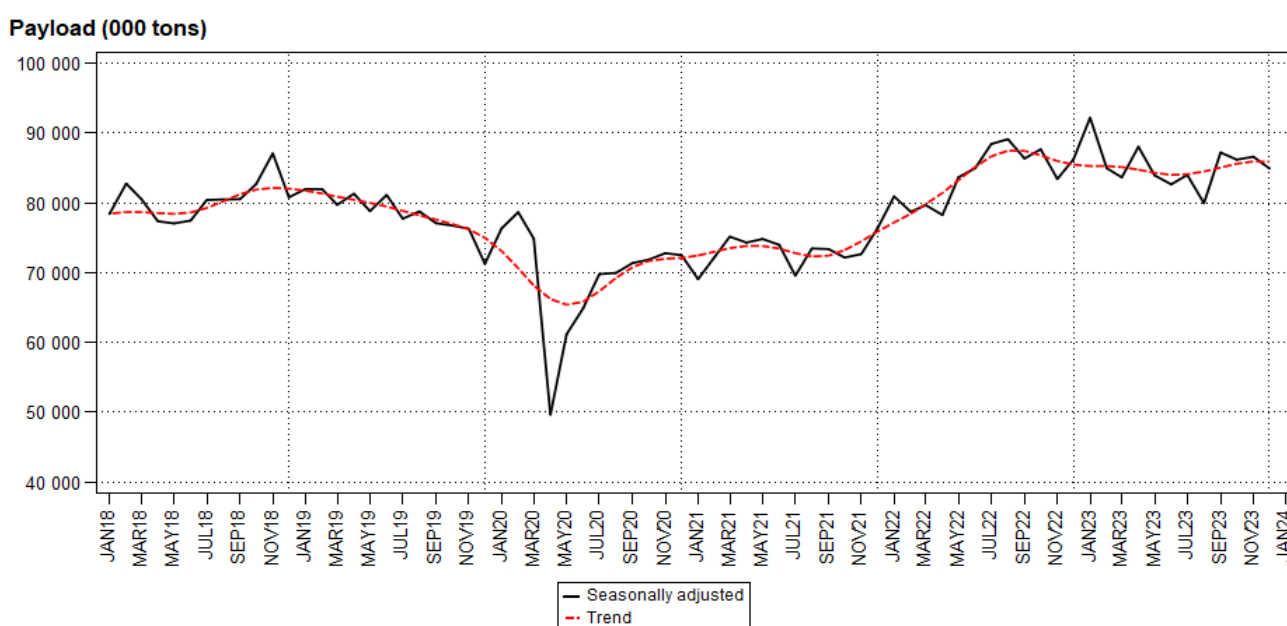
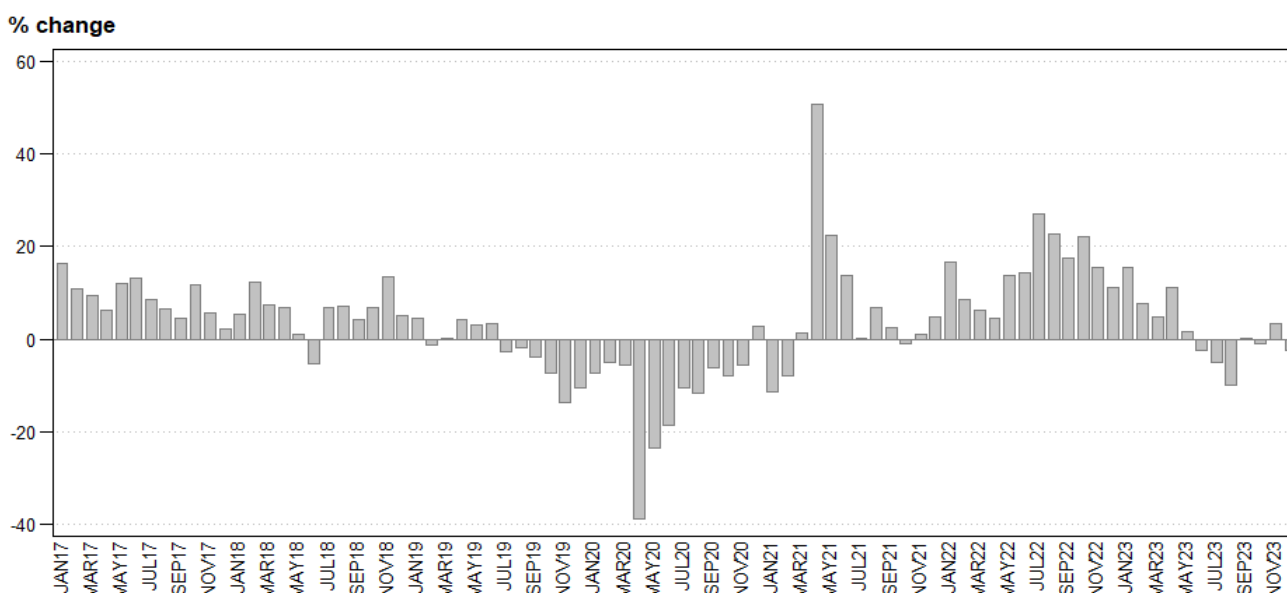


Figure 2 – Freight transportation: year-on-year percentage change in payload



Passenger transportation: results for December 2023

Table D – Year-on-year percentage change in passenger transportation (income at current prices)

	Jul-23	Aug-23	Sep-23	Oct-23	Nov-23	Dec-23
Passenger journeys	19,4	14,2	23,8	23,0	16,6	9,9
Passenger income	10,0	10,6	14,8	15,1	12,9	6,9

The number of passenger journeys increased by 9,9% in December 2023 compared with December 2022. The corresponding income increased by 6,9% over the same period.

Table E – Seasonally adjusted passenger journeys for the latest three months by type of transport

Passenger journeys	Jul – Sep 2023 (000)	Weight (%)	Oct – Dec 2023 (000)	% change between Jul – Sep 2023 and Oct – Dec 2023	Contribution (% points) to the total % change
Rail	10 940	14,2	12 008	9,8	1,4
Road	66 300	85,8	69 049	4,1	3,5
Total	77 240	100,0	81 056	4,9	4,9

Seasonally adjusted passenger journeys increased by 4,9% in the fourth quarter of 2023 compared with the third quarter of 2023. Road passenger journeys increased by 4,1% (contributing 3,5 percentage points) and rail passenger journeys increased by 9,8% (contributing 1,4 percentage points) – see Table E.

Figure 3 – Passenger transportation: seasonally adjusted passenger journeys

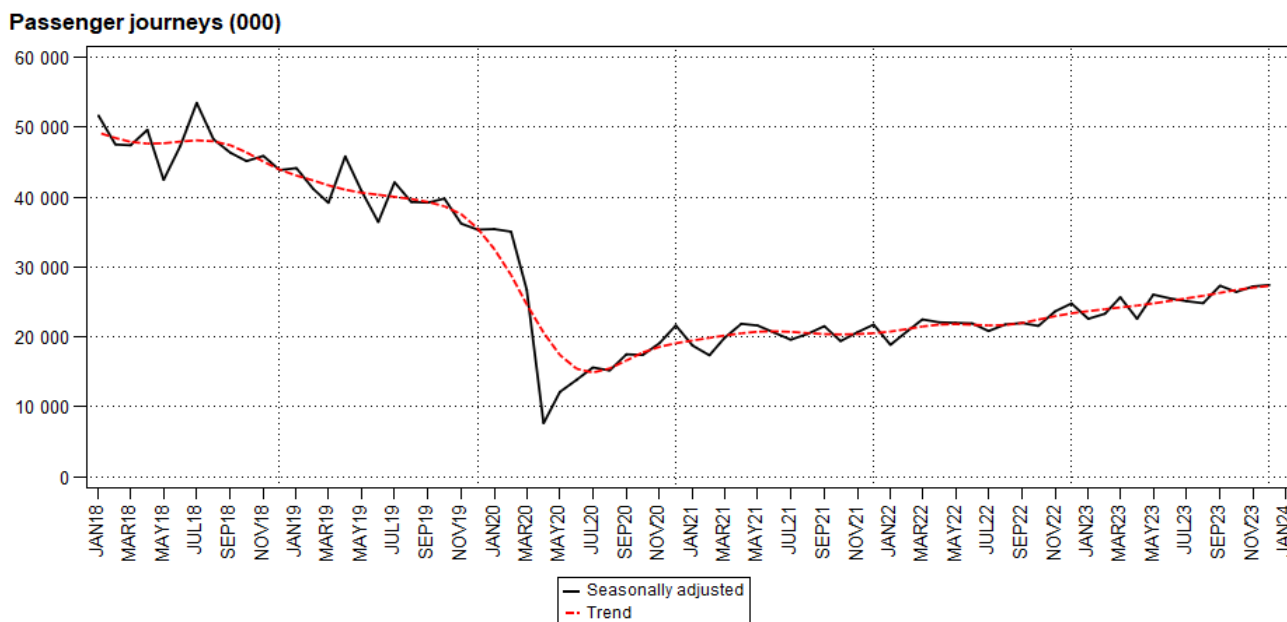
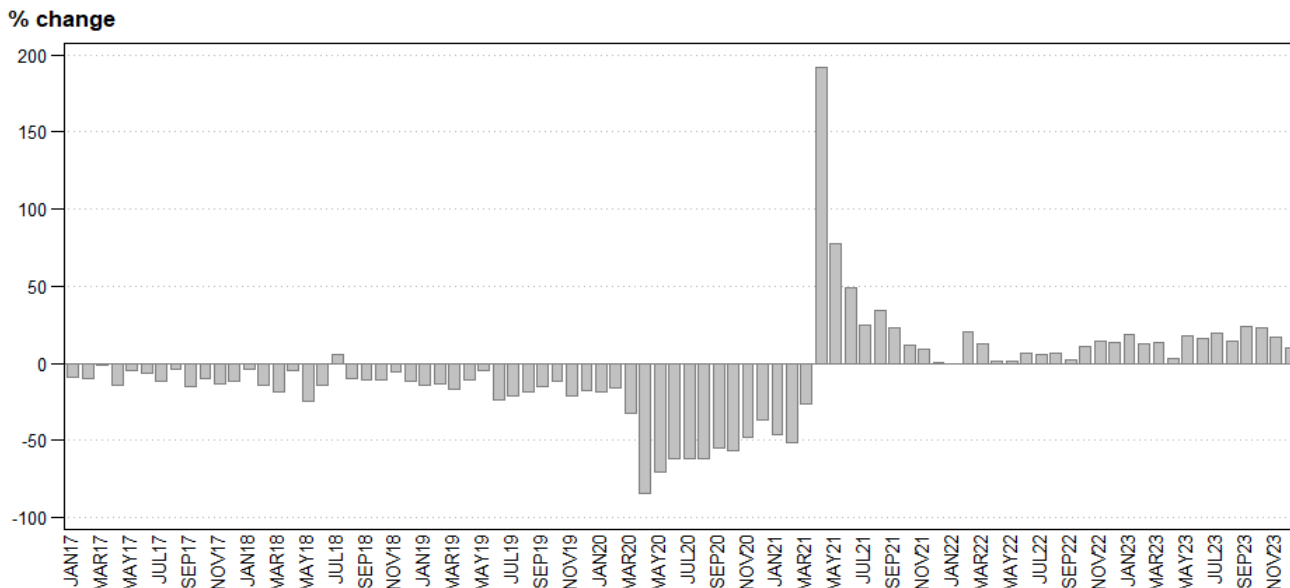


Figure 4 – Passenger transportation: year-on-year percentage change in passenger journeys



Risenga Maluleke
Statistician-General

Tables

Table 1 – Freight transportation (income at current prices)

Year and month ¹		Rail		Road		Total	
		Payload (000 tons)	Income (R million)	Payload (000 tons)	Income (R million)	Payload (000 tons)	Income (R million)
2022	Jan	13 996	2 893	59 044	12 052	73 040	14 945
	Feb	14 780	3 054	58 519	12 149	73 299	15 203
	Mar	13 228	2 765	65 972	13 746	79 200	16 511
	Apr	14 431	3 127	61 895	13 036	76 326	16 163
	May	13 751	2 976	72 524	15 065	86 275	18 041
	Jun	13 261	3 060	72 484	15 170	85 745	18 230
	Jul	12 271	2 850	77 702	16 396	89 973	19 246
	Aug	14 515	3 303	82 749	16 865	97 264	20 168
	Sep	14 801	3 497	75 168	15 839	89 969	19 336
	Oct	9 997	2 076	79 449	16 158	89 446	18 234
	Nov	9 133	2 296	78 767	16 702	87 900	18 998
	Dec	12 019	2 785	68 406	14 373	80 425	17 158
	Total	156 183	34 682	852 679	177 551	1 008 862	212 233
2023	Jan	13 242	2 986	70 995	14 683	84 237	17 669
	Feb	12 961	2 976	65 887	13 854	78 848	16 830
	Mar	11 964	2 853	71 003	14 971	82 967	17 824
	Apr	13 552	3 283	71 195	14 707	84 747	17 990
	May	12 096	3 060	75 445	15 485	87 541	18 545
	Jun	13 282	3 500	70 292	14 781	83 574	18 280
	Jul	11 247	2 856	74 273	15 608	85 520	18 463
	Aug	13 841	3 485	73 709	15 747	87 550	19 232
	Sep	18 971	4 825	71 311	15 373	90 281	20 198
	Oct	11 839	3 052	76 653	16 306	88 492	19 358
	Nov	13 338	3 457	77 411	16 249	90 749	19 706
	Dec	14 045	3 822	64 349	13 858	78 394	17 680
	Total	160 378	40 155	862 523	181 622	1 022 900	221 775

¹ Figures for the latest month are preliminary.

Table 2 – Year-on-year percentage change in freight transportation (income at current prices)

Year and month		Rail		Road		Total	
		Payload	Income	Payload	Income	Payload	Income
2022	Jan	7,1	4,0	19,1	21,0	16,6	17,3
	Feb	-1,5	-3,1	11,3	12,6	8,5	9,0
	Mar	-13,4	-16,5	11,2	14,8	6,2	8,0
	Apr	-7,6	-6,9	7,8	12,6	4,5	8,2
	May	-6,9	-5,1	18,9	22,5	13,8	16,9
	Jun	-18,4	-10,6	23,3	28,7	14,3	19,9
	Jul	-0,2	9,4	32,8	40,2	27,0	34,6
	Aug	-11,5	-4,6	31,4	32,1	22,6	24,3
	Sep	-8,4	1,7	24,5	27,7	17,5	22,1
	Oct	-23,0	-27,4	31,8	30,0	22,1	19,3
	Nov	-37,0	-24,2	27,6	30,0	15,3	19,6
	Dec	-20,6	-10,5	19,6	20,8	11,2	14,3
	Total	-12,0	-7,9	21,8	24,7	15,0	17,9
2023	Jan	-5,4	3,2	20,2	21,8	15,3	18,2
	Feb	-12,3	-2,6	12,6	14,0	7,6	10,7
	Mar	-9,6	3,2	7,6	8,9	4,8	8,0
	Apr	-6,1	5,0	15,0	12,8	11,0	11,3
	May	-12,0	2,8	4,0	2,8	1,5	2,8
	Jun	0,2	14,4	-3,0	-2,6	-2,5	0,3
	Jul	-8,3	0,2	-4,4	-4,8	-4,9	-4,1
	Aug	-4,6	5,5	-10,9	-6,6	-10,0	-4,6
	Sep	28,2	38,0	-5,1	-2,9	0,3	4,5
	Oct	18,4	47,0	-3,5	0,9	-1,1	6,2
	Nov	46,0	50,6	-1,7	-2,7	3,2	3,7
	Dec	16,9	37,2	-5,9	-3,6	-2,5	3,0
	Total	2,7	15,8	1,2	2,3	1,4	4,5

Table 3 – Seasonally adjusted freight transportation (income at current prices)

Year and month		Rail		Road		Total	
		Payload (000 tons)	Income (R million)	Payload (000 tons)	Income (R million)	Payload (000 tons)	Income (R million)
2022	Jan	14 373	3 002	66 541	13 523	80 914	16 525
	Feb	14 644	3 076	64 066	13 187	78 711	16 263
	Mar	13 719	2 968	65 941	13 762	79 660	16 730
	Apr	13 899	3 010	64 351	13 483	78 250	16 493
	May	13 895	3 041	69 770	14 607	83 665	17 648
	Jun	12 692	2 897	72 267	15 188	84 959	18 086
	Jul	13 676	3 173	74 758	15 751	88 434	18 924
	Aug	13 197	3 076	75 918	15 740	89 115	18 816
	Sep	13 225	3 191	73 121	15 334	86 346	18 525
	Oct	11 702	2 217	75 965	15 538	87 668	17 755
	Nov	9 167	2 248	74 244	15 629	83 412	17 878
	Dec	11 914	2 743	74 311	15 459	86 224	18 202
2023	Jan	13 574	3 102	78 626	16 199	92 200	19 300
	Feb	12 789	2 991	72 164	15 062	84 953	18 053
	Mar	12 456	3 064	71 190	14 991	83 646	18 054
	Apr	12 983	3 160	75 046	15 494	88 029	18 655
	May	12 286	3 141	71 652	14 856	83 938	17 996
	Jun	12 746	3 316	69 895	14 656	82 641	17 972
	Jul	12 466	3 173	71 528	15 040	83 993	18 213
	Aug	12 538	3 251	67 405	14 689	79 943	17 939
	Sep	16 828	4 396	70 379	15 069	87 208	19 465
	Oct	14 066	3 267	72 117	15 423	86 183	18 690
	Nov	13 498	3 409	73 106	15 284	86 603	18 692
	Dec	13 837	3 724	71 076	15 124	84 913	18 847

Table 4 – Month-on-month percentage change in seasonally adjusted freight transportation (income at current prices)

Year and month		Rail		Road		Total	
		Payload	Income	Payload	Income	Payload	Income
2022	Jan	-5,3	-3,7	8,8	6,6	6,0	4,6
	Feb	1,9	2,5	-3,7	-2,5	-2,7	-1,6
	Mar	-6,3	-3,5	2,9	4,4	1,2	2,9
	Apr	1,3	1,4	-2,4	-2,0	-1,8	-1,4
	May	0,0	1,0	8,4	8,3	6,9	7,0
	Jun	-8,7	-4,7	3,6	4,0	1,5	2,5
	Jul	7,8	9,5	3,4	3,7	4,1	4,6
	Aug	-3,5	-3,1	1,6	-0,1	0,8	-0,6
	Sep	0,2	3,7	-3,7	-2,6	-3,1	-1,5
	Oct	-11,5	-30,5	3,9	1,3	1,5	-4,2
	Nov	-21,7	1,4	-2,3	0,6	-4,9	0,7
	Dec	30,0	22,0	0,1	-1,1	3,4	1,8
2023	Jan	13,9	13,1	5,8	4,8	6,9	6,0
	Feb	-5,8	-3,6	-8,2	-7,0	-7,9	-6,5
	Mar	-2,6	2,4	-1,3	-0,5	-1,5	0,0
	Apr	4,2	3,1	5,4	3,4	5,2	3,3
	May	-5,4	-0,6	-4,5	-4,1	-4,6	-3,5
	Jun	3,7	5,6	-2,5	-1,3	-1,5	-0,1
	Jul	-2,2	-4,3	2,3	2,6	1,6	1,3
	Aug	0,6	2,5	-5,8	-2,3	-4,8	-1,5
	Sep	34,2	35,2	4,4	2,6	9,1	8,5
	Oct	-16,4	-25,7	2,5	2,3	-1,2	-4,0
	Nov	-4,0	4,3	1,4	-0,9	0,5	0,0
	Dec	2,5	9,2	-2,8	-1,0	-2,0	0,8

Table 5 – Freight transportation income at current prices by type of commodity (R million)

Type of commodity	Jul-23	Aug-23	Sep-23	Oct-23	Nov-23	Dec-23 ¹
Agriculture and forestry primary products	1 245	1 324	1 218	1 297	1 290	1 017
Primary mining and quarrying products	6 397	5 883	7 024	6 366	6 784	6 379
Manufactured food, beverages and tobacco products	2 105	2 203	2 225	2 309	2 258	2 046
Textiles, clothing and leather products	424	437	457	527	536	491
Chemicals, coke, petroleum, rubber, plastic and other mineral products	858	937	981	893	940	799
Basic metals and fabricated metal products	263	268	257	280	202	227
Non-metallic products	163	151	150	172	183	136
Electrical machinery, transport machinery and equipment	393	367	319	364	389	326
Motor vehicles, parts and accessories	519	530	513	519	563	469
Paper and paper products	93	92	104	105	111	92
Commercial products	443	386	409	424	438	385
Used household and office products	437	405	393	409	432	437
Containers	919	865	871	843	928	865
Parcels	463	498	493	519	607	479
Other freight	3 740	4 886	4 784	4 332	4 044	3 533
Total	18 463	19 232	20 198	19 358	19 706	17 680

¹ Figures are preliminary.

Table 6 – Year-on-year percentage change in freight transportation income at current prices by type of commodity

Type of commodity	Jul-23	Aug-23	Sep-23	Oct-23	Nov-23	Dec-23
Agriculture and forestry primary products	-14,1	-12,3	-12,6	-0,2	-4,9	-20,6
Primary mining and quarrying products	-2,1	-18,5	5,1	10,3	19,2	11,9
Manufactured food, beverages and tobacco products	-17,7	-17,5	-12,7	-7,8	-15,0	-18,7
Textiles, clothing and leather products	1,0	-3,3	-3,8	5,6	-4,6	18,6
Chemicals, coke, petroleum, rubber, plastic and other mineral products	-8,4	0,3	8,3	-7,6	-0,1	-3,0
Basic metals and fabricated metal products	15,9	16,0	-1,9	40,7	-22,6	0,0
Non-metallic products	-6,9	-17,0	-14,3	27,4	10,9	-2,2
Electrical machinery, transport machinery and equipment	32,8	16,9	-1,2	6,4	8,1	27,3
Motor vehicles, parts and accessories	0,2	0,4	-4,1	-1,1	3,5	-15,3
Paper and paper products	-13,1	-18,6	3,0	-0,9	-5,1	1,1
Commercial products	3,0	-10,9	-7,5	2,7	-9,7	5,5
Used household and office products	-15,8	-23,6	-16,2	1,0	-7,7	-0,5
Containers	2,9	0,3	6,7	15,8	5,9	10,1
Parcels	-9,0	-6,9	-4,1	4,4	-4,1	15,1
Other freight	1,8	33,6	29,5	12,8	4,2	12,2
Total	-4,1	-4,6	4,5	6,2	3,7	3,0

Table 7 – Contribution of each type of commodity to the year-on-year percentage change in freight transportation income at current prices (percentage points)

Type of commodity	Jul-23	Aug-23	Sep-23	Oct-23	Nov-23	Dec-23
Agriculture and forestry primary products	-1,1	-0,9	-0,9	0,0	-0,4	-1,5
Primary mining and quarrying products	-0,7	-6,6	1,8	3,3	5,7	4,0
Manufactured food, beverages and tobacco products	-2,4	-2,3	-1,7	-1,1	-2,1	-2,8
Textiles, clothing and leather products	0,0	-0,1	-0,1	0,2	-0,1	0,4
Chemicals, coke, petroleum, rubber, plastic and other mineral products	-0,4	0,0	0,4	-0,4	0,0	-0,1
Basic metals and fabricated metal products	0,2	0,2	0,0	0,4	-0,3	0,0
Non-metallic products	-0,1	-0,2	-0,1	0,2	0,1	0,0
Electrical machinery, transport machinery and equipment	0,5	0,3	0,0	0,1	0,2	0,4
Motor vehicles, parts and accessories	0,0	0,0	-0,1	0,0	0,1	-0,5
Paper and paper products	-0,1	-0,1	0,0	0,0	0,0	0,0
Commercial products	0,1	-0,2	-0,2	0,1	-0,2	0,1
Used household and office products	-0,4	-0,6	-0,4	0,0	-0,2	0,0
Containers	0,1	0,0	0,3	0,6	0,3	0,5
Parcels	-0,2	-0,2	-0,1	0,1	-0,1	0,4
Other freight	0,3	6,1	5,6	2,7	0,9	2,2
Total	-4,1	-4,6	4,5	6,2	3,7	3,0

Table 8 – Passenger transportation (income at current prices)

Year and month ¹		Rail		Road		Total	
		Passenger journeys (000)	Income (R million)	Passenger journeys (000)	Income (R million)	Passenger journeys (000)	Income (R million)
2022	Jan	1 367	35	16 590	660	17 957	695
	Feb	1 974	59	19 339	688	21 313	747
	Mar	2 218	68	22 313	828	24 531	896
	Apr	1 441	76	18 392	720	19 833	796
	May	1 285	77	19 773	716	21 058	793
	Jun	1 021	64	20 435	783	21 456	847
	Jul	1 056	91	19 488	768	20 544	859
	Aug	1 335	96	21 197	750	22 532	846
	Sep	1 400	104	22 437	831	23 837	935
	Oct	1 824	110	21 067	745	22 891	855
	Nov	2 311	104	22 682	785	24 993	889
	Dec	1 886	61	19 834	906	21 720	967
	Total	19 118	945	243 547	9 180	262 665	10 125
2023	Jan	2 483	125	18 901	787	21 384	912
	Feb	3 124	122	20 859	770	23 983	892
	Mar	3 567	136	24 333	903	27 900	1 039
	Apr	2 635	110	17 830	730	20 465	840
	May	3 468	113	21 437	776	24 905	889
	Jun	3 222	116	21 625	874	24 847	990
	Jul	3 163	96	21 371	849	24 534	945
	Aug	3 901	117	21 835	819	25 736	936
	Sep	3 844	143	25 668	930	29 512	1 073
	Oct	4 379	153	23 783	831	28 162	984
	Nov	4 915	143	24 225	861	29 140	1 004
	Dec	3 058	79	20 823	955	23 881	1 034
	Total	41 759	1 453	262 690	10 085	304 449	11 538

¹ Figures for the latest month are preliminary.

Table 9 – Year-on-year percentage change in passenger transportation (income at current prices)

Year and month		Rail		Road		Total	
		Passenger journeys	Income	Passenger journeys	Income	Passenger journeys	Income
2022	Jan	21,2	45,8	-1,5	4,8	0,0	6,3
	Feb	36,1	103,4	18,6	11,9	20,1	16,0
	Mar	25,2	65,9	12,0	7,1	13,1	10,1
	Apr	-11,7	85,4	2,4	15,9	1,2	20,2
	May	-26,7	79,1	4,3	4,4	1,7	8,8
	Jun	-30,1	113,3	9,7	17,4	6,8	21,5
	Jul	-26,2	378,9	8,6	17,4	6,0	27,6
	Aug	-42,4	182,4	12,5	9,0	6,5	17,2
	Sep	-45,1	121,3	8,5	12,8	2,6	19,3
	Oct	-30,5	107,5	16,7	14,4	10,7	21,4
	Nov	1,0	108,0	16,3	14,1	14,7	20,5
	Dec	38,9	84,8	11,8	43,6	13,7	45,6
	Total	-12,1	112,8	10,0	14,2	8,0	19,3
2023	Jan	81,6	257,1	13,9	19,2	19,1	31,2
	Feb	58,3	106,8	7,9	11,9	12,5	19,4
	Mar	60,8	100,0	9,1	9,1	13,7	16,0
	Apr	82,9	44,7	-3,1	1,4	3,2	5,5
	May	169,9	46,8	8,4	8,4	18,3	12,1
	Jun	215,6	81,3	5,8	11,6	15,8	16,9
	Jul	199,5	5,5	9,7	10,5	19,4	10,0
	Aug	192,2	21,9	3,0	9,2	14,2	10,6
	Sep	174,6	37,5	14,4	11,9	23,8	14,8
	Oct	140,1	39,1	12,9	11,5	23,0	15,1
	Nov	112,7	37,5	6,8	9,7	16,6	12,9
	Dec	62,1	29,5	5,0	5,4	9,9	6,9
	Total	118,4	53,8	7,9	9,9	15,9	14,0

Table 10 – Seasonally adjusted passenger transportation (income at current prices)

Year and month		Rail		Road		Total	
		Passenger journeys (000)	Income (R million)	Passenger journeys (000)	Income (R million)	Passenger journeys (000)	Income (R million)
2022	Jan	1 521	33	17 334	642	18 856	675
	Feb	1 817	56	18 982	731	20 799	787
	Mar	2 009	64	20 484	839	22 492	903
	Apr	1 492	82	20 586	815	22 078	897
	May	1 343	80	20 655	752	21 998	833
	Jun	1 095	68	20 833	769	21 927	837
	Jul	1 154	101	19 670	753	20 825	854
	Aug	1 269	96	20 505	760	21 773	856
	Sep	1 365	93	20 610	774	21 975	867
	Oct	1 613	90	19 946	740	21 559	830
	Nov	1 930	94	21 725	773	23 655	867
	Dec	2 528	92	22 246	834	24 774	926
2023	Jan	2 754	117	19 826	765	22 580	882
	Feb	2 876	117	20 436	818	23 312	935
	Mar	3 288	129	22 378	919	25 666	1 048
	Apr	2 695	120	19 891	828	22 586	947
	May	3 639	119	22 404	820	26 043	939
	Jun	3 481	122	22 018	853	25 499	975
	Jul	3 483	108	21 626	833	25 109	941
	Aug	3 710	118	21 102	833	24 812	951
	Sep	3 747	127	23 572	861	27 319	988
	Oct	3 867	125	22 559	830	26 426	955
	Nov	4 070	127	23 148	848	27 218	976
	Dec	4 071	120	23 342	873	27 412	994

Table 11 – Month-on-month percentage change in seasonally adjusted passenger transportation (income at current prices)

Year and month		Rail		Road		Total	
		Passenger journeys	Income	Passenger journeys	Income	Passenger journeys	Income
2022	Jan	-17,4	-32,7	-13,0	9,4	-13,3	6,1
	Feb	19,5	69,7	9,5	13,9	10,3	16,6
	Mar	10,6	14,3	7,9	14,8	8,1	14,7
	Apr	-25,7	28,1	0,5	-2,9	-1,8	-0,7
	May	-10,0	-2,4	0,3	-7,7	-0,4	-7,1
	Jun	-18,5	-15,0	0,9	2,3	-0,3	0,5
	Jul	5,4	48,5	-5,6	-2,1	-5,0	2,0
	Aug	10,0	-5,0	4,2	0,9	4,6	0,2
	Sep	7,6	-3,1	0,5	1,8	0,9	1,3
	Oct	18,2	-3,2	-3,2	-4,4	-1,9	-4,3
	Nov	19,7	4,4	8,9	4,5	9,7	4,5
	Dec	31,0	-2,1	2,4	7,9	4,7	6,8
2023	Jan	8,9	27,2	-10,9	-8,3	-8,9	-4,8
	Feb	4,4	0,0	3,1	6,9	3,2	6,0
	Mar	14,3	10,3	9,5	12,3	10,1	12,1
	Apr	-18,0	-7,0	-11,1	-9,9	-12,0	-9,6
	May	35,0	-0,8	12,6	-1,0	15,3	-0,8
	Jun	-4,3	2,5	-1,7	4,0	-2,1	3,8
	Jul	0,1	-11,5	-1,8	-2,3	-1,5	-3,5
	Aug	6,5	9,3	-2,4	0,0	-1,2	1,1
	Sep	1,0	7,6	11,7	3,4	10,1	3,9
	Oct	3,2	-1,6	-4,3	-3,6	-3,3	-3,3
	Nov	5,2	1,6	2,6	2,2	3,0	2,2
	Dec	0,0	-5,5	0,8	2,9	0,7	1,8

Survey information

Introduction	1	Statistics South Africa (Stats SA) conducts a monthly survey of the land transportation industry, covering passenger and freight transportation by rail and road (see point 4 below). This survey is based on a sample drawn from the 2023 statistical business register (SBR) that contains businesses registered for value-added tax (VAT) and income tax.
	2	In order to improve timeliness, some information for the latest month had to be estimated due to late response. These estimates will be revised in future statistical releases as soon as information becomes available. Published land transportation income estimates exclude VAT.
Purpose of the survey	3	The results of the monthly land transport survey are used to compile estimates of the gross domestic product (GDP) and its components, which are used in monitoring the state of the economy and formulation of economic policy. These statistics are also used in the analysis of comparative business and industry performance.
Scope of the survey	4	This survey covers enterprises involved in land transportation according to the following types of transportation: <ul style="list-style-type: none"> • railway transport (including passenger and freight transportation); • ‘other’ scheduled passenger land transport – urban, suburban and inter-urban bus and coach passenger lines and school buses; • ‘other’ non-scheduled passenger land transport – safaris and sightseeing bus tours, metered taxis and ‘other’ passenger transport including renting of motor cars with drivers; and • freight transport by road.
Exclusions	5	Passenger transportation excludes: <ul style="list-style-type: none"> • minibus taxis; • metropolitan buses (including the Bus Rapid Transport system – BRT); and • rental of private cars/buses without drivers. <p>Freight transportation excludes:</p> <ul style="list-style-type: none"> • renting of trucks without drivers; and • in-house transportation.
Classification	6	The 1993 edition of the <i>Standard Industrial Classification of All Economic Activities</i> (SIC), Fifth Edition, Report No. 09-90-02, was used to classify the statistical units in the survey. The SIC is based on the 1990 <i>International Standard Industrial Classification of All Economic Activities</i> (ISIC) with suitable adaptations for local conditions. Statistics in this publication are presented at SIC division (two-digit) level. Each enterprise is classified to the industry which reflects its predominant activity.
Collection rate	7	The preliminary collection rate for the survey on land transportation for December 2023 was 68,0%. The improved collection rate for November 2023 was 70,0%.
Statistical unit	8	The statistical unit for which information is compiled and published is an enterprise, defined as a legal unit or a combination of legal units that includes and directly controls all functions necessary to carry out its income activities. The statistical units are derived from and linked to the South African Revenue Service (SARS) administrative data.
Revised figures	9	Revised figures are mainly due to late submission of data to Stats SA, or respondents reporting revisions or corrections to their figures. Preliminary figures, as indicated in the relevant tables, are subject to change and when revised will not be indicated as such.
Related publications	10	Users may also wish to refer to the following publication available from Stats SA – <ul style="list-style-type: none"> • <i>Stats in Brief</i> issued annually.

- Rounding-off of figures** 11 Where figures have been rounded off, discrepancies may occur between sums of the component items and the totals.
- Historical data** 12 Historical land transport data are available on the Stats SA website. To access the data electronically, use the following link:
[Click to download historical data.](#)
- Past publications** 13 Past land transport releases are available on the Stats SA website. To access the releases electronically, use the following link:
[Click to download past releases.](#)

Technical notes

- Survey methodology and design** 1 The survey is conducted on a monthly basis. Questionnaires are sent to a sample of 784 enterprises from a population of 5 136 enterprises. Completed questionnaires are required to be returned to Stats SA within 10 days after the end of the reference month. Email and telephone reminders are used to follow up on non-respondents.
- 2 A stratified random sample was drawn at the SIC four-digit level in April 2023 from Stats SA's statistical business register (SBR). Strata were formed using a combination of Standard Industrial Classification and the measure of size classes for enterprises (see paragraph 3 below).

The Neyman optimal allocation formula given below was used to allocate samples to each stratum:

$$n_h = n * (N_h * S_h) / [\sum (N_i * S_i)].$$

Neyman allocation formula not only allocates sample sizes to each stratum but also calculates the relative precision for each stratum as well as the relative precision for all strata. The relative precision for these strata was 1,2%.

- Sample design and class limits** 3 The land transportation industry is divided into four size groups. All large enterprises (size group one) are completely enumerated. Simple random sampling is applied to medium (size group two) and small (size groups three and four) enterprises. The total value of income of the large enterprises (size group one) is added to the weighted totals of size groups two, three and four to reflect the total value of income.

Measure of size classes (Rand)

Enterprise size	Size group	Lower limit	Upper limit
Very small	4	1 375 366	9 000 000
Small	3	9 000 001	39 000 000
Medium	2	39 000 001	78 000 000
Large	1	78 000 001	

- Sample weighting** 4 For those strata not completely enumerated, the weights to produce estimates are the inverse ratio of the sampling fraction, modified to take account of non-response in the survey. Stratum estimates are calculated and then aggregated with the completely enumerated stratum to form division estimates. These procedures are in line with international best practice.
- Reliability of estimates** 5 Data presented in this publication are based on information obtained from a sample and are, therefore, subject to sampling variability; that is, they may differ from the figures that would have been produced if the data had been obtained from all enterprises in the land transport industry in South Africa. Estimates are subject to sampling and non-sampling errors.
- 6 Inaccuracies may occur because of imperfections in reporting by enterprises and errors made in the collection and processing of the data. Inaccuracies of this kind are referred to as non-sampling errors. Every effort is made to minimise non-sampling errors by careful design of questionnaires, testing them in pilot studies, editing reported data and

implementing efficient operating procedures. Fluctuations may occur in consecutive months as a result of seasonal and economic factors.

- Relative standard error** 7 One measure is the standard error (SE), which indicates the extent to which an estimate might have varied by chance because only a sample of enterprises was used. The relative standard error (RSE) provides an immediate indication of the percentage errors likely to have occurred due to sampling, and thus avoids the need to refer to the size of the estimate.

Estimates of land transport within 95% confidence limits – December 2023

	Lower limit (R million)	Estimate (R million)	Upper limit (R million)	Relative standard error (RSE) %
Freight income	16 121	17 680	19 237	4,4
Passenger income	1 017	1 034	1 050	0,8

- Year-on-year percentage change** 8 The year-on-year percentage change in a variable for any given period is the change between that period and the corresponding period of the previous year, expressed as a percentage of the latter.

- Contribution (percentage points)** 9 The contribution (percentage points) to the annual percentage change for any given period is calculated by multiplying the percentage change of each type of commodity/service by its corresponding weight, divided by 100. The weight is the percentage contribution of each type of commodity/service to total income in the corresponding period of the previous year.

- Seasonal adjustment** 10 Seasonally adjusted estimates are generated each month using the X-12-ARIMA Seasonal Adjustment Program developed by the United States Census Bureau. Seasonal adjustment is a means of removing the estimated effects of normal seasonal variation from the series so that the effects of other influences on the series can be recognised more clearly. Seasonal adjustment does not aim to remove irregular or non-seasonal influences which may be present in any particular month. Influences that are volatile or unsystematic can still make it difficult to interpret the movement of the series even after adjustment for seasonal variations. Therefore, the month-to-month movements of seasonally adjusted estimates may not be reliable indicators of trend behaviour. The X-12-ARIMA procedure for land transportation is described in more detail on the Stats SA website at:
[Click to download seasonal adjustment land transport February 2022.](#)

- Trend cycle** 11 The trend is the long-term pattern or movement of a time series. The X-12-ARIMA Seasonal Adjustment Program is used for smoothing seasonally adjusted estimates to estimates of the underlying trend cycle.

Glossary

Enterprise An enterprise is a legal entity or a combination of legal units that includes and directly controls all functions necessary to carry out its activities.

Industry An industry is made up of enterprises engaged in the same or similar kinds of economic activity. Industries are defined in the *System of National Accounts* (SNA) in the same way as in the *Standard Industrial Classification of All Economic Activities* (SIC), Fifth Edition, Report No. 09-90-02 of January 1993.

Symbols and abbreviations	GDP	Gross domestic product
	ISIC	International Standard Industrial Classification
	SARS	South African Revenue Service
	SBR	Statistical Business Register
	SIC	Standard Industrial Classification of All Economic Activities
	Stats SA	Statistics South Africa
	VAT	Value-added tax

Technical enquiries

Kagisho Mathabatha Telephone number: (012) 310 2153
Email: kagishoma@statssa.gov.za

Raquel Floris Telephone number: (012) 337 6488
Email: raquelf@statssa.gov.za

General information

Stats SA publishes approximately 300 different statistical releases each year. It is not economically viable to produce them in more than one of South Africa's 12 official languages. Since the releases are used extensively, not only locally but also by international economic and social-scientific communities, Stats SA releases are published in English only.

Stats SA has copyright on this publication. Users may apply the information as they wish, provided that they acknowledge Stats SA as the source of the basic data wherever they process, apply, utilise, publish or distribute the data: and also that they specify that the relevant application and analysis (where applicable) result from their own processing of the data.

Advance release calendar

A release calendar is disseminated on www.statssa.gov.za.

Stats SA products

A complete set of Stats SA publications is available at the Stats SA Library and the following libraries:

National Library of South Africa, Pretoria Division
National Library of South Africa, Cape Town Division
Natal Society Library, Pietermaritzburg
Library of Parliament, Cape Town
Bloemfontein Public Library
Johannesburg Public Library
Eastern Cape Library Services, Qonce
Central Regional Library, Polokwane
Central Reference Library, Mbombela
Central Reference Collection, Kimberley
Central Reference Library, Mmabatho

Stats SA also provides a subscription service.

Electronic services

A large range of data is available via online services. For more details about our electronic services, contact Stats SA's user information service at (012) 310 8600.

You can visit us on the internet at: www.statssa.gov.za.

General enquiries

User information services Telephone number: (012) 310 8600
Email: info@statssa.gov.za

Orders/subscription services Telephone number: (012) 310 8619
Email: millies@statssa.gov.za

Postal address Private Bag X44, Pretoria, 0001

Produced by Stats SA