



The South Africa I know, the home I understand

---

# Statistical release

## P7162

# Land transport survey (Preliminary)

**December 2014**

**Embargoed until:  
23 February 2015  
11:30**

**Enquiries:**

---

User Information Services  
(012) 310 8600

**Forthcoming issue:**

---

January 2015

**Expected release date:**

---

23 March 2015

**Contents**

**Freight transportation: results for December 2014..... 2**

    Table A – Year-on-year percentage change in freight transportation (income at current prices)..... 2

    Table B – Freight transportation income at current prices for the latest three months by type of commodity.... 2

    Figure 1 – Freight transportation: year-on-year percentage change in payload..... 3

**Passenger transportation: results for December 2014..... 3**

    Table C – Year-on-year percentage change in passenger transportation (income at current prices)..... 3

    Figure 2 – Passenger transportation: year-on-year percentage change in passenger journeys..... 3

**Tables ..... 4**

    Table 1 – Freight transportation (income at current prices) ..... 4

    Table 2 – Year-on-year percentage change in freight transportation (income at current prices) ..... 4

    Table 3 – Freight transportation income at current prices by type of commodity (R million) ..... 5

    Table 4 – Year-on-year percentage change in freight transportation income at current prices by type of commodity ..... 5

    Table 5 – Contribution of each type of commodity to the year-on-year percentage change in freight transportation income at current prices (percentage points) ..... 5

    Table 6 – Passenger transportation (income at current prices) ..... 6

    Table 7 – Year-on-year percentage change in passenger transportation (income at current prices) ..... 6

**Survey information ..... 7**

**Technical notes..... 8**

**Glossary ..... 9**

**Technical enquiries ..... 9**

**General information..... 10**

## Freight transportation: results for December 2014

**Table A – Year-on-year percentage change in freight transportation (income at current prices)**

	Jul-14	Aug-14	Sep-14	Oct-14	Nov-14	Dec-14
Freight payload	4,1	4,3	8,3	9,9	10,1	4,9
Freight income	8,8	7,3	13,1	8,8	8,4	4,1

The volume of goods transported (payload) increased by 4,9% in December 2014 compared with December 2013. The corresponding income increased by 4,1% over the same period.

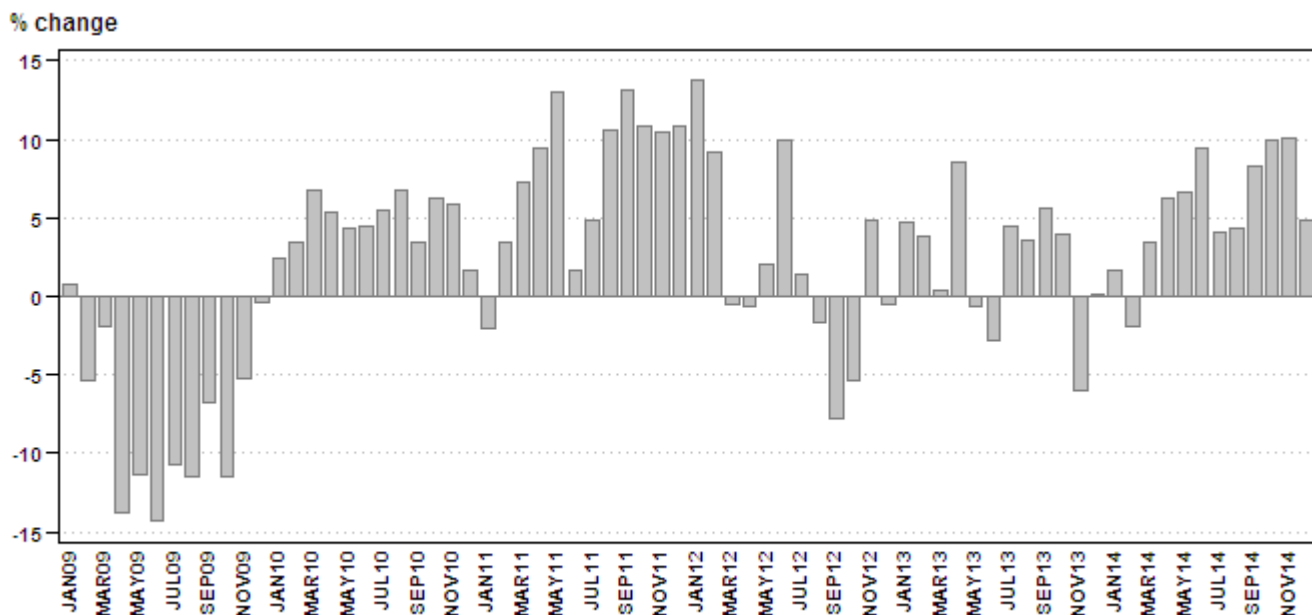
**Table B – Freight transportation income at current prices for the latest three months by type of commodity**

Type of commodity	Oct – Dec 2013 (R million)	Weight	Oct – Dec 2014 (R million)	% change between Oct – Dec 2013 and Oct – Dec 2014	Contribution (% points) to the total % change
Agriculture and forestry primary products	2 120	7,4	2 539	19,8	1,5
Primary mining and quarrying products	9 546	33,4	11 559	21,1	7,0
Manufactured food, beverages and tobacco products	3 934	13,8	3 963	0,7	0,1
Textiles, clothing and leather goods	526	1,8	477	-9,3	-0,2
Chemicals, coke, petroleum, rubber, plastic and other mineral products	2 448	8,6	2 365	-3,4	-0,3
Basic metals and fabricated metal products	1 268	4,4	1 267	-0,1	0,0
Non-metallic products	821	2,9	822	0,1	0,0
Electrical machinery, transport machinery and equipment	569	2,0	549	-3,5	-0,1
Motor vehicles, parts and accessories	671	2,3	698	4,0	0,1
Paper and paper products	425	1,5	409	-3,8	-0,1
Commercial products	786	2,7	661	-15,9	-0,4
Used household and office products	328	1,1	308	-6,1	-0,1
Containers	1 865	6,5	1 746	-6,4	-0,4
Parcels	463	1,6	430	-7,1	-0,1
Other freight	2 823	9,9	2 859	1,3	0,1
<b>Total income</b>	<b>28 594</b>	<b>100,0</b>	<b>30 652</b>	<b>7,2</b>	<b>7,2</b>

Income from freight transportation increased by 7,2% in the fourth quarter of 2014 compared with the fourth quarter of 2013. The main contributors to this increase were:

- primary mining and quarrying products (21,1% and contributing 7,0 percentage points); and
- agriculture and forestry primary products (19,8% and contributing 1,5 percentage points) – see Table B.

**Figure 1 – Freight transportation: year-on-year percentage change in payload**



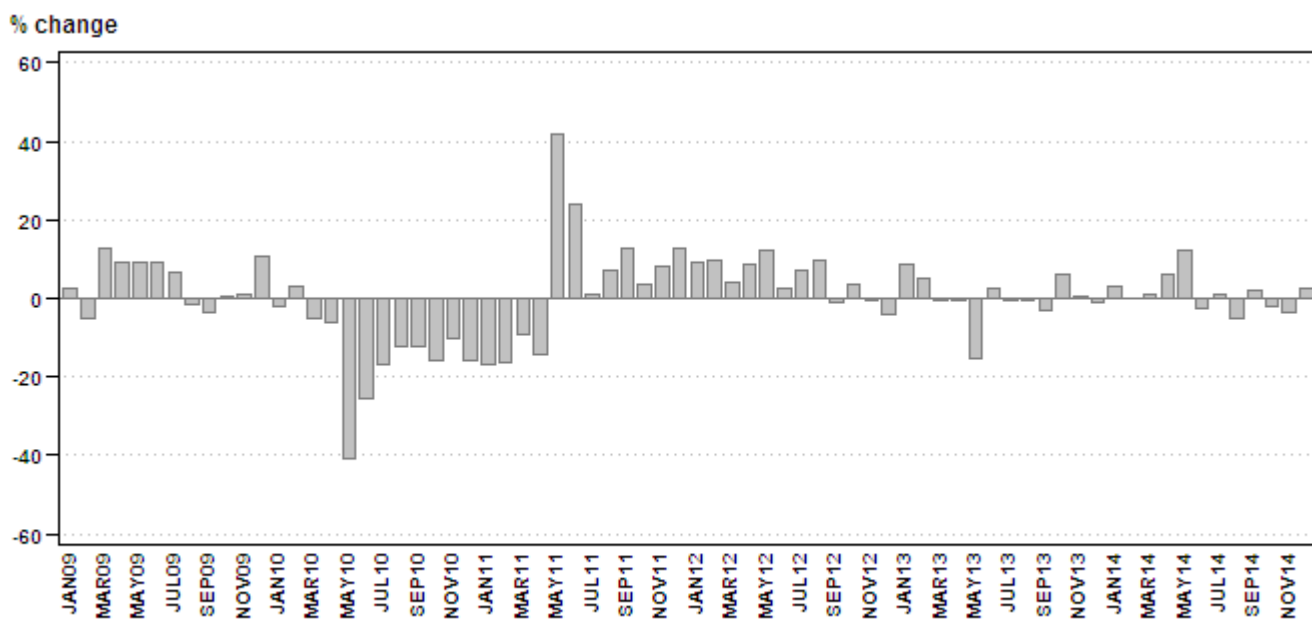
**Passenger transportation: results for December 2014**

**Table C – Year-on-year percentage change in passenger transportation (income at current prices)**

	Jul-14	Aug-14	Sep-14	Oct-14	Nov-14	Dec-14
Passenger journeys	1,1	-5,0	1,9	-1,8	-3,8	2,6
Passenger income	10,2	6,8	10,7	12,7	7,2	12,5

The number of passenger journeys increased by 2,6% in December 2014 compared with December 2013. The corresponding income increased by 12,5% over the same period.

**Figure 2 – Passenger transportation: year-on-year percentage change in passenger journeys**



**Tables**

**Table 1 – Freight transportation (income at current prices)**

Year and month 1/		Rail		Road		Total	
		Payload (000 tons)	Income (R million)	Payload (000 tons)	Income (R million)	Payload (000 tons)	Income (R million)
2013	Jan	17 244	2 520	41 865	5 608	59 109	8 128
	Feb	19 051	2 774	43 896	5 909	62 947	8 683
	Mar	17 323	2 492	43 231	5 820	60 554	8 312
	Apr	17 961	2 799	44 445	6 513	62 406	9 312
	May	14 808	2 439	45 549	6 645	60 357	9 084
	Jun	18 506	2 892	42 610	6 055	61 116	8 947
	Jul	18 776	2 882	46 069	6 570	64 845	9 452
	Aug	18 482	2 962	45 754	6 617	64 236	9 579
	Sep	18 734	2 981	45 092	6 392	63 826	9 373
	Oct	18 464	2 809	45 047	6 817	63 511	9 626
	Nov	18 164	2 956	47 066	7 194	65 230	10 150
	Dec	17 318	2 666	40 397	6 152	57 715	8 818
	<b>Total</b>	<b>214 831</b>	<b>33 172</b>	<b>531 021</b>	<b>76 292</b>	<b>745 852</b>	<b>109 464</b>
2014	Jan	18 079	2 890	42 045	6 249	60 124	9 139
	Feb	17 188	2 732	44 559	6 611	61 747	9 343
	Mar	16 925	2 625	45 697	6 611	62 622	9 236
	Apr	19 561	3 249	46 703	6 717	66 264	9 966
	May	15 512	2 623	48 832	7 233	64 344	9 856
	Jun	19 128	3 121	47 812	7 099	66 940	10 220
	Jul	18 795	3 080	48 728	7 208	67 523	10 288
	Aug	18 832	3 242	48 142	7 040	66 974	10 282
	Sep	20 336	3 378	48 791	7 225	69 127	10 604
	Oct	19 663	3 068	50 118	7 404	69 781	10 472
	Nov	20 284	3 277	51 547	7 721	71 831	10 998
	Dec	18 631	3 074	41 905	6 108	60 536	9 182
	<b>Total</b>	<b>222 934</b>	<b>36 359</b>	<b>564 879</b>	<b>83 226</b>	<b>787 813</b>	<b>119 586</b>

1/ Latest month is preliminary.

**Table 2 – Year-on-year percentage change in freight transportation (income at current prices)**

Year and month		Rail		Road		Total	
		Payload	Income	Payload	Income	Payload	Income
2013	Jan	2,9	13,2	5,4	6,8	4,7	8,7
	Feb	8,2	14,6	2,0	2,2	3,8	5,9
	Mar	-1,8	5,2	1,3	2,3	0,4	3,2
	Apr	4,6	16,9	10,1	19,1	8,5	18,4
	May	-4,6	12,4	0,7	13,6	-0,6	13,3
	Jun	3,4	17,8	-5,2	2,2	-2,8	6,8
	Jul	2,4	12,1	5,4	12,0	4,5	12,0
	Aug	9,0	11,9	1,6	8,8	3,6	9,7
	Sep	-0,4	3,9	8,3	13,8	5,6	10,4
	Oct	12,4	13,4	0,8	9,3	3,9	10,5
	Nov	-2,1	11,1	-7,5	2,4	-6,0	4,8
	Dec	1,3	5,0	-0,4	8,9	0,1	7,7
	<b>Total</b>	<b>2,9</b>	<b>11,3</b>	<b>1,6</b>	<b>8,3</b>	<b>2,0</b>	<b>9,2</b>
2014	Jan	4,8	14,7	0,4	11,4	1,7	12,4
	Feb	-9,8	-1,5	1,5	11,9	-1,9	7,6
	Mar	-2,3	5,3	5,7	13,6	3,4	11,1
	Apr	8,9	16,1	5,1	3,1	6,2	7,0
	May	4,8	7,5	7,2	8,8	6,6	8,5
	Jun	3,4	7,9	12,2	17,2	9,5	14,2
	Jul	0,1	6,9	5,8	9,7	4,1	8,8
	Aug	1,9	9,5	5,2	6,4	4,3	7,3
	Sep	8,6	13,3	8,2	13,0	8,3	13,1
	Oct	6,5	9,2	11,3	8,6	9,9	8,8
	Nov	11,7	10,9	9,5	7,3	10,1	8,4
	Dec	7,6	15,3	3,7	-0,7	4,9	4,1
	<b>Total</b>	<b>3,8</b>	<b>9,6</b>	<b>6,4</b>	<b>9,1</b>	<b>5,6</b>	<b>9,2</b>

**Table 3 – Freight transportation income at current prices by type of commodity (R million)**

Type of commodity	Jul-14	Aug-14	Sep-14	Oct-14	Nov-14	Dec-14 1/
Agriculture and forestry primary products	932	904	862	913	900	726
Primary mining and quarrying products	3 776	3 987	4 090	3 890	4 023	3 646
Manufactured food, beverages and tobacco products	1 324	1 141	1 272	1 217	1 645	1 101
Textiles, clothing and leather products	133	155	154	160	180	137
Chemicals, coke, petroleum, rubber, plastic and other mineral products	821	793	799	803	838	724
Basic metals and fabricated metal products	410	442	466	425	465	377
Non-metallic products	305	287	284	284	289	249
Electrical machinery, transport machinery and equipment	195	205	187	214	193	142
Motor vehicles, parts and accessories	230	223	238	253	249	196
Paper and paper products	139	133	129	152	148	109
Commercial products	210	207	207	236	238	187
Used household and office products	112	105	102	101	103	104
Containers	579	607	676	619	595	532
Parcels	153	144	148	159	152	119
Other freight	968	947	988	1 047	980	832
<b>Total</b>	<b>10 288</b>	<b>10 282</b>	<b>10 604</b>	<b>10 472</b>	<b>10 998</b>	<b>9 182</b>

1/ Preliminary.

**Table 4 – Year-on-year percentage change in freight transportation income at current prices by type of commodity**

Type of commodity	Jul-14	Aug-14	Sep-14	Oct-14	Nov-14	Dec-14
Agriculture and forestry primary products	14,4	19,3	20,2	20,0	20,2	19,0
Primary mining and quarrying products	13,8	19,4	20,6	19,9	19,5	24,3
Manufactured food, beverages and tobacco products	20,9	-10,7	14,6	-0,2	15,2	-14,5
Textiles, clothing and leather products	9,0	20,2	20,3	-8,6	-7,2	-12,7
Chemicals, coke, petroleum, rubber, plastic and other mineral products	12,6	2,9	6,7	-3,1	-2,9	-4,2
Basic metals and fabricated metal products	-8,5	-0,2	3,8	4,7	-3,9	-0,3
Non-metallic products	13,8	14,3	10,9	-0,7	8,6	-7,4
Electrical machinery, transport machinery and equipment	30,9	9,6	3,9	7,0	-9,8	-8,4
Motor vehicles, parts and accessories	-8,0	-4,3	17,2	16,1	2,0	-6,2
Paper and paper products	3,0	6,4	-3,0	5,6	0,7	-18,7
Commercial products	-20,5	-11,5	-13,4	-12,9	-17,4	-17,6
Used household and office products	5,7	10,5	3,0	-5,6	3,0	-14,0
Containers	-13,7	-2,1	9,4	1,5	-8,3	-12,2
Parcels	9,3	5,9	13,8	-1,9	-11,1	-8,5
Other freight	2,9	-3,4	1,3	5,5	-0,6	-1,5
<b>Total</b>	<b>8,8</b>	<b>7,3</b>	<b>13,1</b>	<b>8,8</b>	<b>8,4</b>	<b>4,1</b>

**Table 5 – Contribution of each type of commodity to the year-on-year percentage change in freight transportation income at current prices (percentage points)**

Type of commodity	Jul-14	Aug-14	Sep-14	Oct-14	Nov-14	Dec-14
Agriculture and forestry primary products	1,2	1,5	1,5	1,6	1,5	1,3
Primary mining and quarrying products	4,8	6,8	7,5	6,7	6,5	8,1
Manufactured food, beverages and tobacco products	2,4	-1,4	1,7	0,0	2,1	-2,1
Textiles, clothing and leather products	0,1	0,3	0,3	-0,2	-0,1	-0,2
Chemicals, coke, petroleum, rubber, plastic and other mineral products	1,0	0,2	0,5	-0,3	-0,2	-0,4
Basic metals and fabricated metal products	-0,4	0,0	0,2	0,2	-0,2	0,0
Non-metallic products	0,4	0,4	0,3	0,0	0,2	-0,2
Electrical machinery, transport machinery and equipment	0,5	0,2	0,1	0,1	-0,2	-0,1
Motor vehicles, parts and accessories	-0,2	-0,1	0,4	0,4	0,0	-0,1
Paper and paper products	0,0	0,1	0,0	0,1	0,0	-0,3
Commercial products	-0,6	-0,3	-0,3	-0,4	-0,5	-0,5
Used household and office products	0,1	0,1	0,0	-0,1	0,0	-0,2
Containers	-1,0	-0,1	0,6	0,1	-0,5	-0,8
Parcels	0,1	0,1	0,2	0,0	-0,2	-0,1
Other freight	0,3	-0,3	0,1	0,6	-0,1	-0,1
<b>Total</b>	<b>8,8</b>	<b>7,3</b>	<b>13,1</b>	<b>8,8</b>	<b>8,4</b>	<b>4,1</b>

**Table 6 – Passenger transportation (income at current prices)**

Year and month 1/		Rail		Road		Total	
		Passenger journeys (000)	Income (R million)	Passenger journeys (000)	Income (R million)	Passenger journeys (000)	Income (R million)
2013	Jan	42 333	225	22 926	568	65 259	793
	Feb	48 897	250	24 985	553	73 882	803
	Mar	49 397	259	25 798	610	75 195	869
	Apr	45 736	233	19 520	473	65 256	706
	May	46 840	232	16 211	405	63 051	637
	Jun	49 207	232	23 303	596	72 510	828
	Jul	45 087	238	24 416	614	69 503	852
	Aug	50 134	259	25 331	599	75 465	858
	Sep	47 091	251	24 558	626	71 649	877
	Oct	52 144	277	27 068	621	79 212	898
	Nov	47 730	255	25 699	606	73 429	861
	Dec	34 831	215	20 583	609	55 414	824
	<b>Total</b>	<b>559 427</b>	<b>2 926</b>	<b>280 398</b>	<b>6 880</b>	<b>839 825</b>	<b>9 806</b>
2014	Jan	43 970	266	23 329	615	67 299	881
	Feb	49 223	274	24 642	589	73 865	863
	Mar	49 413	276	26 401	682	75 814	958
	Apr	46 124	256	23 221	626	69 345	882
	May	47 016	254	23 900	617	70 916	871
	Jun	44 618	243	25 951	649	70 569	892
	Jul	44 649	268	25 584	671	70 233	939
	Aug	45 122	263	26 535	653	71 657	916
	Sep	46 216	282	26 760	689	72 976	971
	Oct	49 189	305	28 592	707	77 781	1 012
	Nov	45 398	273	25 273	650	70 671	923
	Dec	33 144	219	23 734	708	56 878	927
	<b>Total</b>	<b>544 082</b>	<b>3 179</b>	<b>303 922</b>	<b>7 856</b>	<b>848 004</b>	<b>11 035</b>

1/ Latest month is preliminary.

**Table 7 – Year-on-year percentage change in passenger transportation (income at current prices)**

Year and month		Rail		Road		Total	
		Passenger journeys	Income	Passenger journeys	Income	Passenger journeys	Income
2013	Jan	11,6	27,8	3,8	12,3	8,8	16,3
	Feb	4,4	30,9	6,5	10,6	5,1	16,2
	Mar	-1,4	28,2	1,3	13,2	-0,5	17,3
	Apr	6,1	12,0	-13,4	-12,2	-0,6	-5,5
	May	-3,7	5,0	-36,8	-25,7	-15,1	-16,8
	Jun	6,5	8,9	-4,2	9,0	2,8	8,9
	Jul	-1,6	8,7	1,5	11,0	-0,5	10,4
	Aug	-0,6	11,6	1,0	7,7	-0,1	8,9
	Sep	-1,9	12,6	-5,2	3,3	-3,0	5,8
	Oct	7,0	17,4	4,9	6,3	6,3	9,5
	Nov	-0,6	9,9	2,5	6,3	0,5	7,4
	Dec	0,1	9,1	-3,3	2,7	-1,2	4,3
	<b>Total</b>	<b>2,0</b>	<b>14,7</b>	<b>-3,5</b>	<b>3,6</b>	<b>0,1</b>	<b>6,7</b>
2014	Jan	3,9	18,2	1,8	8,3	3,1	11,1
	Feb	0,7	9,6	-1,4	6,5	0,0	7,5
	Mar	0,0	6,6	2,3	11,8	0,8	10,2
	Apr	0,8	9,9	19,0	32,3	6,3	24,9
	May	0,4	9,5	47,4	52,3	12,5	36,7
	Jun	-9,3	4,7	11,4	8,9	-2,7	7,7
	Jul	-1,0	12,6	4,8	9,3	1,1	10,2
	Aug	-10,0	1,5	4,8	9,0	-5,0	6,8
	Sep	-1,9	12,4	9,0	10,1	1,9	10,7
	Oct	-5,7	10,1	5,6	13,8	-1,8	12,7
	Nov	-4,9	7,1	-1,7	7,3	-3,8	7,2
	Dec	-4,8	1,9	15,3	16,3	2,6	12,5
	<b>Total</b>	<b>-2,7</b>	<b>8,6</b>	<b>8,4</b>	<b>14,2</b>	<b>1,0</b>	<b>12,5</b>

## Survey information

<b>Introduction</b>	<b>1</b>	Statistics South Africa (Stats SA) conducts a monthly survey of the land transportation industry, covering passenger and freight transportation by rail and road (see paragraph 4 below). This survey is based on a sample drawn from the 2014 business sampling frame (BSF) that contains businesses registered for value added tax (VAT) and income tax.
	<b>2</b>	In order to improve timeliness, some information for the latest month had to be estimated due to late response. These estimates will be revised in future statistical releases as soon as information becomes available. Published land transportation income estimates exclude VAT.
<b>Purpose of the survey</b>	<b>3</b>	The results of the monthly land transport survey are used to compile estimates of the gross domestic product (GDP) and its components, which are used in monitoring the state of the economy and formulation of economic policy. These statistics are also used in the analysis of comparative business and industry performance.
<b>Scope of the survey</b>	<b>4</b>	This survey covers enterprises involved in land transportation according to the following type of transportation: <ul style="list-style-type: none"> <li>• railway transport (including passenger and freight transportation);</li> <li>• 'other' scheduled passenger land transport – urban, suburban and inter-urban bus and coach passenger lines and school buses;</li> <li>• 'other' non-scheduled passenger land transport – safaris and sightseeing bus tours, metered taxis and 'other' passenger transport including renting of motor cars with drivers; and</li> <li>• freight transport by road.</li> </ul>
<b>Exclusions</b>	<b>5</b>	<p>Passenger transportation excludes:</p> <ul style="list-style-type: none"> <li>• minibus taxis;</li> <li>• metropolitan buses (including the Bus Rapid Transport system – BRT); and</li> <li>• rental of private cars/buses without drivers.</li> </ul> <p>Freight transportation excludes:</p> <ul style="list-style-type: none"> <li>• renting of trucks without drivers; and</li> <li>• in-house transportation.</li> </ul>
<b>Classification</b>	<b>6</b>	The 1993 edition of the <i>Standard Industrial Classification of all Economic Activities</i> (SIC), Fifth Edition, Report No. 09-90-02, was used to classify the statistical units in the survey. The SIC is based on the 1990 <i>International Standard Industrial Classification of all Economic Activities</i> (ISIC) with suitable adaptations for local conditions. Statistics in this publication are presented at SIC division (two-digit) level. Each enterprise is classified to the industry which reflects its predominant activity.
<b>Collection rate</b>	<b>7</b>	The preliminary collection rate for the survey on land transportation for December 2014 was 90,9%. The improved collection rate for November 2014 was 94,3%.
<b>Statistical unit</b>	<b>8</b>	The statistical unit for which information is compiled and published is an enterprise, defined as a legal unit or a combination of legal units that includes and directly controls all functions necessary to carry out its income activities. The statistical units are derived from and linked to the South African Revenue Service (SARS) administrative data.
<b>Revised figures</b>	<b>9</b>	Revised figures are mainly due to late submission of data to Stats SA, or respondents reporting revisions or corrections to their figures. Preliminary figures, as indicated in the relevant tables, are subject to change and when revised will not be indicated as such.



- Related publications**      **10**    Users may also wish to refer to the following publications available from Stats SA -
  - *Bulletin of Statistics* issued quarterly;
  - *Stats in Brief* issued annually; and
  - *SA Statistics* issued annually.
  
- Rounding-off of figures**      **11**    Where figures have been rounded off, discrepancies may occur between sums of the component items and the totals.
  
- Historical data**            **12**    Historical land transport data are available on the Stats SA website. To access the data electronically, use the following link:  
[http://beta2.statssa.gov.za/?page\\_id=1849](http://beta2.statssa.gov.za/?page_id=1849)
  
- Past publication**        **13**    Past land transport releases are available on the Stats SA website. To access the releases electronically, use the following link:  
<http://www.statssa.gov.za/publications/statspastfuture.asp?PPN=P7162&SCH=>

**Technical notes**

**Survey methodology and design**      **1**    The survey is conducted on a monthly basis. Questionnaires are sent to a sample of 701 enterprises from a population of 3 797 enterprises. Completed questionnaires are required to be returned to Stats SA within 10 days after the end of the reference month. Fax and telephone reminders are used to follow up on non-respondents.

**2**    A stratified random sample was drawn at the SIC four-digit level in April 2014 from Stats SA’s business sampling frame (BSF). Strata were formed using a combination of Standard Industrial Classification and the measure of size classes for enterprises (see paragraph 3 below).

The Neyman optimal allocation formula given below was used to allocate samples to each stratum:

$$n_h = n * ( N_h * S_h ) / [ \sum ( N_i * S_i ) ].$$

Neyman allocation formula not only allocates sample sizes to each stratum but also calculates the relative precision for each stratum as well as the relative precision for all strata. The relative precision for these strata was 0,8%.

**Sample design and class limits**      **3**    The land transportation industry is divided into four size groups. All large enterprises (size group one) are completely enumerated. Simple random sampling is applied to medium sized (size group two) and to small (size group three and four) enterprises. The total value of income of the large enterprises (size group one) is added to the weighted totals of size groups two, three and four to reflect the total value of income.

**Measure of size classes (Rand)**

Enterprise size	Size group	Lower limits	Upper limits
Very small	4	996 348	9 000 000
Small	3	9 000 001	39 000 000
Medium	2	39 000 001	78 000 000
Large	1	78 000 001	

**Sample weighting**            **4**    For those strata not completely enumerated, the weights to produce estimates are the inverse ratio of the sampling fraction, modified to take account of non-response in the survey. Stratum estimates are calculated and then aggregated with the completely enumerated stratum to form division estimates. These procedures are in line with international best practice.

- Reliability of estimates**
- 5 Data presented in this publication are based on information obtained from a sample and are, therefore, subject to sampling variability; that is, they may differ from the figures that would have been produced if the data had been obtained from all enterprises in the land transport industry in South Africa. Estimates are subject to sampling and non-sampling errors.
  - 6 Inaccuracies may occur because of imperfections in reporting by enterprises and errors made in the collection and processing of the data. Inaccuracies of this kind are referred to as non-sampling errors. Every effort is made to minimise non-sampling errors by careful design of questionnaires, testing them in pilot studies, editing reported data and implementing efficient operating procedures. Fluctuations may occur in consecutive months as a result of seasonal and economic factors.
- Year-on-year percentage change**
- 7 The year-on-year percentage change in a variable for any given period is the change between that period and the corresponding period of the previous year, expressed as a percentage of the latter.
- Contribution (percentage points)**
- 8 The contribution (percentage points) to the annual percentage change for any given period is calculated by multiplying the percentage change of each type of commodity/service by its corresponding weight, divided by 100. The weight is the percentage contribution of each type of commodity/service to total income in the corresponding period of the previous year.

## Glossary

- Enterprise** An enterprise is a legal entity or a combination of legal units that includes and directly controls all functions necessary to carry out its sales activities.
- Industry** An industry is made up of enterprises engaged in the same or similar kinds of economic activity. Industries are defined in the *System of National Accounts (SNA)* in the same way as in the *Standard Industrial Classification of all Economic Activities, Fifth Edition*, Report No. 09-90-02 of January 1993 (SIC).
- Symbols and abbreviations**
- |          |   |
|----------|---|
| BSF      | Business sampling frame                                       |
| GDP      | Gross domestic product  |
| ISIC     | International Standard Industrial Classification              |
| SIC      | Standard Industrial Classification of all Economic Activities |
| SARS     | South African Revenue Service                                 |
| Stats SA | Statistics South Africa                                       |
| VAT      | Value added tax   |

## Technical enquiries

- Ho Chun Cheung** Telephone number: (012) 310 6360  
Email: hochunc@statssa.gov.za
- Keshnee Govender** Telephone number: (012) 310 8423  
Email: keshneeg@statssa.gov.za

## General information

Stats SA publishes approximately 300 different statistical releases each year. It is not economically viable to produce them in more than one of South Africa's eleven official languages. Since the releases are used extensively, not only locally but also by international economic and social-scientific communities, Stats SA releases are published in English only.

Stats SA has copyright on this publication. Users may apply the information as they wish, provided that they acknowledge Stats SA as the source of the basic data wherever they process, apply, utilise, publish or distribute the data: and also that they specify that the relevant application and analysis (where applicable) result from their own processing of the data.

## Advanced release calendar

An advanced release calendar is disseminated on [www.statssa.gov.za](http://www.statssa.gov.za)

## Stats SA products

A complete set of Stats SA publications is available at the Stats SA Library and the following libraries:

National Library of South Africa, Pretoria Division  
National Library of South Africa, Cape Town Division  
Natal Society Library, Pietermaritzburg  
Library of Parliament, Cape Town  
Bloemfontein Public Library  
Johannesburg Public Library  
Eastern Cape Library Services, King William's Town  
Central Regional Library, Polokwane  
Central Reference Library, Mbombela  
Central Reference Collection, Kimberley  
Central Reference Library, Mmabatho

Stats SA also provides a subscription service.

## Electronic services

A large range of data is available via online services. For more detail about our electronic services, contact Stats SA's user information service at (012) 310 8600.

You can visit us on the internet at: [www.statssa.gov.za](http://www.statssa.gov.za)

## General enquiries

User information services	Telephone number: (012) 310 8600 Email address: <a href="mailto:info@statssa.gov.za">info@statssa.gov.za</a>
Orders/subscription services	Telephone number: (012) 310 8044 Email address: <a href="mailto:magdaj@statssa.gov.za">magdaj@statssa.gov.za</a>
Postal address	Private Bag X44, Pretoria, 0001

*Produced by Stats SA*