



The South Africa I know, the home I understand

Statistical release

P7162

Land transport survey (Preliminary)

December 2013

**Embargoed until:
17 February 2014
11:30**

Enquiries:

User Information Services
(012) 310 8600

Forthcoming issue:

January 2014

Expected release date:

24 March 2014

Contents

Freight transportation: results for December 2013..... 2

 Table A – Year-on-year percentage change in freight transportation (income at current prices)..... 2

 Table B – Freight transportation income at current prices for the latest three months by type of commodity.... 2

 Figure 1 – Freight transportation: year-on-year percentage change in payload..... 3

Passenger transportation: results for December 2013..... 3

 Table C – Year-on-year percentage change in passenger transportation (income at current prices)..... 3

 Figure 2 – Passenger transportation: year-on-year percentage change in passenger journeys..... 3

Tables 4

 Table 1 – Freight transportation (income at current prices) 4

 Table 2 – Year-on-year percentage change in freight transportation (income at current prices) 4

 Table 3 – Freight transportation income at current prices by type of commodity (R million) 5

 Table 4 – Year-on-year percentage change in freight transportation income at current prices by type of commodity 5

 Table 5 – Contribution of each type of commodity to the year-on-year percentage change in freight transportation income at current prices (percentage points)..... 5

 Table 6 – Passenger transportation (income at current prices) 6

 Table 7 – Year-on-year percentage change in passenger transportation (income at current prices) 6

Survey information 7

Technical notes..... 8

Glossary 9

Technical enquiries 9

General information..... 10

Freight transportation: results for December 2013

Table A – Year-on-year percentage change in freight transportation (income at current prices)

	Jul-13	Aug-13	Sep-13	Oct-13	Nov-13	Dec-13
Freight payload	4,4	3,0	4,1	2,6	-8,3	-1,7
Freight income	11,3	9,5	9,1	7,8	2,2	5,5

The volume of goods transported (payload) decreased by 1,7% in December 2013 compared with December 2012. The corresponding income increased by 5,5% over the same period.

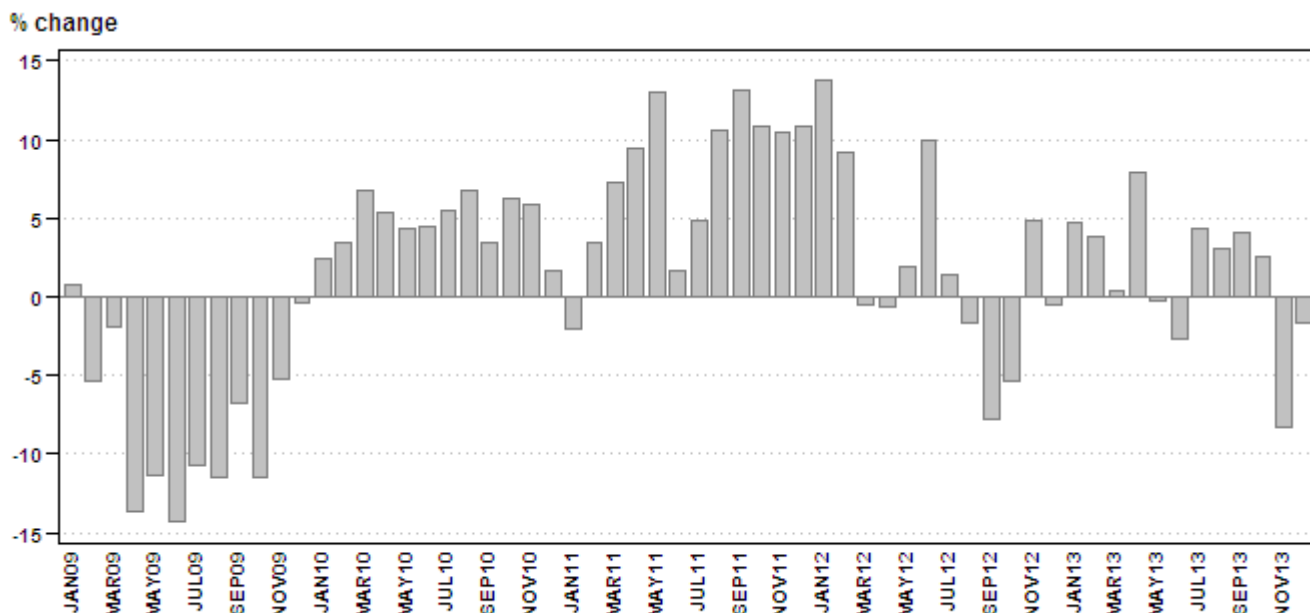
Table B – Freight transportation income at current prices for the latest three months by type of commodity

Type of commodity	Oct – Dec 2012 (R million)	Weight	Oct – Dec 2013 (R million)	% change between Oct – Dec 2012 and Oct – Dec 2013	Contribution (% points) to the total % change
Agriculture and forestry primary products	1 658	6,5	1 700	2,5	0,2
Primary mining and quarrying products	8 312	32,7	8 638	3,9	1,3
Manufactured food, beverages and tobacco products	3 735	14,7	3 629	-2,8	-0,4
Textiles, clothing and leather goods	398	1,6	355	-10,8	-0,2
Chemicals, coke, petroleum, rubber, plastic and other mineral products	2 024	8,0	2 061	1,8	0,1
Basic metals and fabricated metal products	1 124	4,4	1 347	19,8	0,9
Non-metallic products	966	3,8	995	3,0	0,1
Electrical machinery, transport machinery and equipment	516	2,0	644	24,8	0,5
Motor vehicles, parts and accessories	717	2,8	724	1,0	0,0
Paper and paper products	438	1,7	485	10,7	0,2
Commercial products	713	2,8	671	-5,9	-0,2
Used household and office products	309	1,2	283	-8,4	-0,1
Containers	1 623	6,4	1 690	4,1	0,3
Parcels	508	2,0	551	8,5	0,2
Other freight	2 405	9,5	2 964	23,2	2,2
Total income	25 447	100,0	26 735	5,1	5,1

Income from freight transportation increased by 5,1% in the fourth quarter of 2013 compared with the fourth quarter of 2012. The main contributors to this increase were:

- ‘other’ freight (23,2% and contributing 2,2 percentage points);
- primary mining and quarrying products (3,9% and contributing 1,3 percentage points); and
- basic metals and fabricated metal products (19,8% and contributing 0,9 of a percentage point) – see Table B.

Figure 1 – Freight transportation: year-on-year percentage change in payload



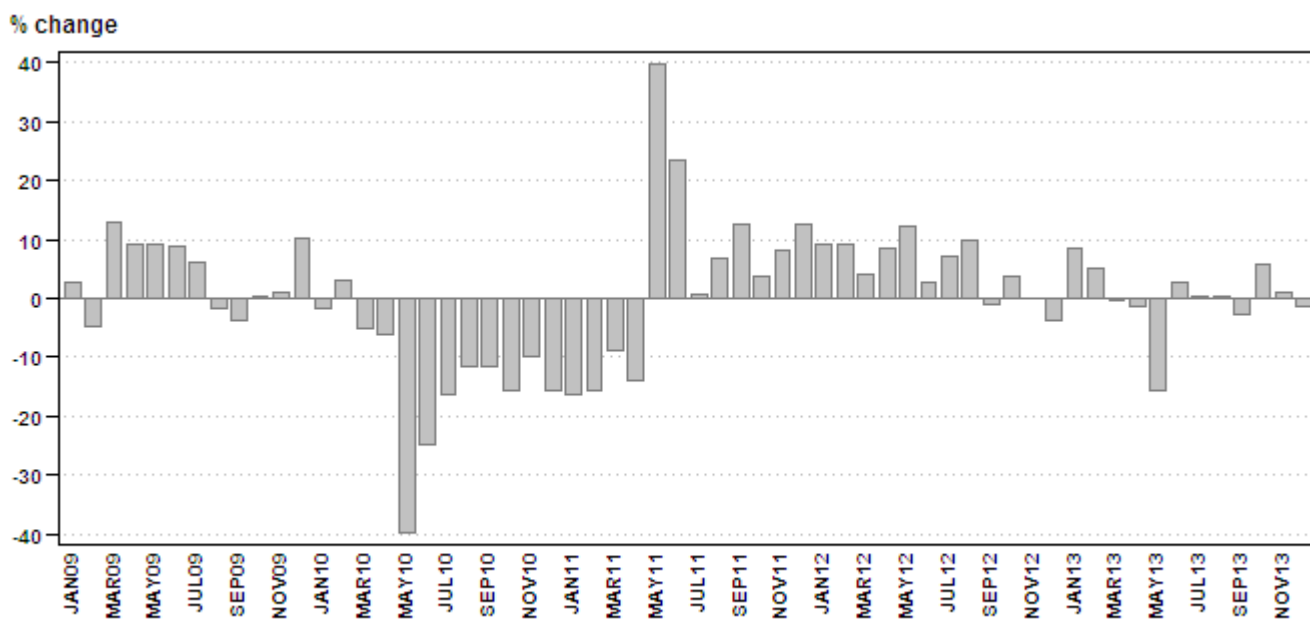
Passenger transportation: results for December 2013

Table C – Year-on-year percentage change in passenger transportation (income at current prices)

	Jul-13	Aug-13	Sep-13	Oct-13	Nov-13	Dec-13
Passenger journeys	0,1	0,4	-2,8	5,7	0,9	-1,3
Passenger income	10,4	8,8	5,2	10,9	8,2	3,9

The number of passenger journeys decreased by 1,3% in December 2013 compared with December 2012. The corresponding income increased by 3,9% over the same period.

Figure 2 – Passenger transportation: year-on-year percentage change in passenger journeys



PJ Lehohla
Statistician-General

Tables

Table 1 – Freight transportation (income at current prices)

Year and month 1/		Rail		Road		Total	
		Payload (000 tons)	Income (R million)	Payload (000 tons)	Income (R million)	Payload (000 tons)	Income (R million)
2012	Jan	16 658	2 213	39 351	4 944	56 009	7 157
	Feb	17 514	2 407	42 636	5 443	60 150	7 850
	Mar	17 540	2 356	42 285	5 358	59 825	7 714
	Apr	17 070	2 380	39 990	5 152	57 060	7 532
	May	15 425	2 157	44 807	5 507	60 232	7 664
	Jun	17 793	2 442	44 541	5 578	62 334	8 020
	Jul	18 227	2 557	43 315	5 527	61 542	8 084
	Aug	16 858	2 633	44 601	5 727	61 459	8 360
	Sep	18 707	2 853	41 259	5 291	59 966	8 144
	Oct	16 332	2 464	44 277	5 873	60 609	8 337
	Nov	18 442	2 645	50 382	6 618	68 824	9 263
	Dec	16 995	2 525	40 167	5 322	57 162	7 847
	Total	207 561	29 632	517 611	66 340	725 172	95 972
2013	Jan	17 145	2 506	41 472	5 282	58 617	7 788
	Feb	18 942	2 758	43 484	5 565	62 426	8 323
	Mar	17 223	2 478	42 825	5 482	60 048	7 960
	Apr	17 857	2 783	43 724	6 128	61 581	8 911
	May	14 724	2 425	45 407	6 277	60 131	8 702
	Jun	18 400	2 875	42 228	5 691	60 628	8 566
	Jul	18 665	2 864	45 602	6 137	64 267	9 001
	Aug	18 373	2 944	44 951	6 214	63 324	9 158
	Sep	18 623	2 963	43 813	5 920	62 436	8 883
	Oct	18 358	2 792	43 797	6 194	62 155	8 987
	Nov	18 057	2 938	45 068	6 529	63 125	9 467
	Dec	17 217	2 650	38 991	5 631	56 208	8 281
		Total	213 584	32 976	521 362	71 050	734 946

1/ Latest month is preliminary.

Table 2 – Year-on-year percentage change in freight transportation (income at current prices)

Year and month		Rail		Road		Total	
		Payload	Income	Payload	Income	Payload	Income
2012	Jan	18,8	35,6	11,8	13,8	13,8	19,7
	Feb	4,5	3,3	11,2	16,4	9,2	12,0
	Mar	10,4	23,9	-4,4	0,5	-0,5	6,6
	Apr	4,6	11,2	-2,8	-0,3	-0,7	3,0
	May	-5,7	-1,9	4,9	4,9	1,9	2,9
	Jun	37,5	32,6	1,8	2,9	9,9	10,5
	Jul	14,3	22,6	-3,2	0,8	1,4	6,8
	Aug	2,9	15,4	-3,3	0,0	-1,7	4,4
	Sep	3,0	19,0	-12,0	-9,7	-7,8	-1,4
	Oct	-9,1	3,5	-3,8	1,7	-5,3	2,2
	Nov	3,3	9,0	5,3	10,2	4,8	9,9
	Dec	-1,1	10,5	-0,2	1,2	-0,5	4,0
	Total	6,0	14,4	0,1	3,2	1,7	6,4
2013	Jan	2,9	13,2	5,4	6,8	4,7	8,8
	Feb	8,2	14,6	2,0	2,2	3,8	6,0
	Mar	-1,8	5,2	1,3	2,3	0,4	3,2
	Apr	4,6	16,9	9,3	18,9	7,9	18,3
	May	-4,5	12,4	1,3	14,0	-0,2	13,5
	Jun	3,4	17,7	-5,2	2,0	-2,7	6,8
	Jul	2,4	12,0	5,3	11,0	4,4	11,3
	Aug	9,0	11,8	0,8	8,5	3,0	9,5
	Sep	-0,4	3,9	6,2	11,9	4,1	9,1
	Oct	12,4	13,3	-1,1	5,5	2,6	7,8
	Nov	-2,1	11,1	-10,5	-1,3	-8,3	2,2
	Dec	1,3	5,0	-2,9	5,8	-1,7	5,5
		Total	2,9	11,3	0,7	7,1	1,3

Table 3 – Freight transportation income at current prices by type of commodity (R million)

Type of commodity	Jul-13	Aug-13	Sep-13	Oct-13	Nov-13	Dec-13 1/
Agriculture and forestry primary products	680	638	587	587	602	511
Primary mining and quarrying products	3 035	3 060	3 078	2 957	3 011	2 670
Manufactured food, beverages and tobacco products	1 052	1 223	1 056	1 124	1 350	1 155
Textiles, clothing and leather products	116	117	112	120	127	108
Chemicals, coke, petroleum, rubber, plastic and other mineral products	686	689	674	722	710	629
Basic metals and fabricated metal products	469	463	476	430	511	406
Non-metallic products	318	304	298	334	324	337
Electrical machinery, transport machinery and equipment	173	187	201	224	242	178
Motor vehicles, parts and accessories	263	269	219	235	263	226
Paper and paper products	152	139	149	161	168	156
Commercial products	229	229	209	239	239	193
Used household and office products	94	82	85	92	85	106
Containers	615	561	564	549	582	559
Parcels	176	173	156	189	198	164
Other freight	944	1 026	1 019	1 024	1 055	885
Total	9 001	9 158	8 883	8 987	9 467	8 281

1/ Preliminary.

Table 4 – Year-on-year percentage change in freight transportation income at current prices by type of commodity

Type of commodity	Jul-13	Aug-13	Sep-13	Oct-13	Nov-13	Dec-13
Agriculture and forestry primary products	13,3	4,9	12,2	3,9	-3,1	8,3
Primary mining and quarrying products	11,1	9,0	4,7	10,8	1,3	0,0
Manufactured food, beverages and tobacco products	-1,1	5,8	3,5	0,4	-3,2	-5,4
Textiles, clothing and leather products	1,8	0,0	-3,4	-8,4	-13,6	-10,0
Chemicals, coke, petroleum, rubber, plastic and other mineral products	11,2	10,8	9,8	7,6	-2,1	0,2
Basic metals and fabricated metal products	19,0	12,1	11,5	8,9	25,2	26,5
Non-metallic products	-2,2	-8,2	-2,6	2,5	-7,7	16,6
Electrical machinery, transport machinery and equipment	6,8	14,0	26,4	28,0	21,0	26,2
Motor vehicles, parts and accessories	10,5	26,9	4,3	-8,6	0,4	14,1
Paper and paper products	5,6	-8,6	13,7	8,1	0,6	27,9
Commercial products	9,0	5,5	10,0	-5,2	-11,8	1,6
Used household and office products	3,3	-13,7	0,0	-2,1	-19,0	-3,6
Containers	20,8	2,2	10,6	0,2	0,0	13,4
Parcels	10,7	4,8	-2,5	6,8	6,5	13,1
Other freight	30,7	36,8	35,7	26,4	21,4	21,9
Total	11,3	9,5	9,1	7,8	2,2	5,5

Table 5 – Contribution of each type of commodity to the year-on-year percentage change in freight transportation income at current prices (percentage points)

Type of commodity	Jul-13	Aug-13	Sep-13	Oct-13	Nov-13	Dec-13
Agriculture and forestry primary products	1,0	0,4	0,8	0,3	-0,2	0,5
Primary mining and quarrying products	3,7	3,0	1,7	3,5	0,4	0,0
Manufactured food, beverages and tobacco products	-0,1	0,8	0,4	0,0	-0,5	-0,8
Textiles, clothing and leather products	0,0	0,0	0,0	-0,1	-0,2	-0,2
Chemicals, coke, petroleum, rubber, plastic and other mineral products	0,9	0,8	0,7	0,6	-0,2	0,0
Basic metals and fabricated metal products	0,9	0,6	0,6	0,4	1,1	1,1
Non-metallic products	-0,1	-0,3	-0,1	0,1	-0,3	0,6
Electrical machinery, transport machinery and equipment	0,1	0,3	0,5	0,6	0,5	0,5
Motor vehicles, parts and accessories	0,3	0,7	0,1	-0,3	0,0	0,4
Paper and paper products	0,1	-0,2	0,2	0,1	0,0	0,4
Commercial products	0,2	0,1	0,2	-0,2	-0,3	0,0
Used household and office products	0,0	-0,2	0,0	0,0	-0,2	-0,1
Containers	1,3	0,1	0,7	0,0	0,0	0,8
Parcels	0,2	0,1	0,0	0,1	0,1	0,2
Other freight	2,7	3,3	3,3	2,6	2,0	2,0
Total	11,3	9,5	9,1	7,8	2,2	5,5

Table 6 – Passenger transportation (income at current prices)

Year and month 1/		Rail		Road		Total	
		Passenger journeys (000)	Income (R million)	Passenger journeys (000)	Income (R million)	Passenger journeys (000)	Income (R million)
2012	Jan	37 920	176	24 261	540	62 181	716
	Feb	46 821	191	25 787	533	72 608	724
	Mar	50 100	202	27 971	575	78 071	777
	Apr	43 093	208	24 763	575	67 856	783
	May	48 659	221	28 165	583	76 824	804
	Jun	46 204	213	26 727	585	72 931	798
	Jul	45 829	219	26 421	591	72 250	810
	Aug	50 430	232	27 568	594	77 998	826
	Sep	48 005	223	28 457	647	76 462	870
	Oct	48 737	236	28 346	624	77 083	860
	Nov	48 002	232	27 543	609	75 545	841
	Dec	34 813	197	23 387	633	58 200	830
	Total	548 613	2 550	319 396	7 089	868 009	9 639
2013	Jan	42 333	225	25 192	606	67 525	831
	Feb	48 897	250	27 454	591	76 351	841
	Mar	49 397	259	28 348	651	77 745	910
	Apr	45 736	233	21 216	501	66 952	734
	May	46 840	232	17 965	437	64 805	669
	Jun	49 207	232	25 687	636	74 894	868
	Jul	45 087	238	27 218	656	72 305	894
	Aug	50 134	259	28 158	640	78 292	899
	Sep	47 091	251	27 264	664	74 355	915
	Oct	52 144	277	29 320	677	81 464	954
	Nov	47 730	255	28 517	655	76 247	910
	Dec	34 831	215	22 595	647	57 426	862
	Total	559 427	2 926	308 934	7 361	868 361	10 287

1/ Latest month is preliminary.

Table 7 – Year-on-year percentage change in passenger transportation (income at current prices)

Year and month		Rail		Road		Total	
		Passenger journeys	Income	Passenger journeys	Income	Passenger journeys	Income
2012	Jan	8,8	8,6	9,8	12,7	9,2	11,7
	Feb	14,6	22,4	0,4	8,3	9,2	11,7
	Mar	7,0	16,1	-0,5	0,3	4,2	4,0
	Apr	7,6	30,8	10,3	11,0	8,5	15,7
	May	12,9	36,4	10,8	11,0	12,1	17,0
	Jun	2,3	25,3	3,9	11,2	2,8	14,7
	Jul	7,5	28,1	6,3	10,7	7,1	14,9
	Aug	11,3	22,8	7,1	12,7	9,8	15,4
	Sep	-4,0	9,9	4,8	12,3	-0,9	11,7
	Oct	-1,0	16,8	13,6	16,4	3,9	16,5
	Nov	-3,7	16,6	7,1	13,2	0,0	14,1
	Dec	-7,6	11,3	2,6	15,3	-3,8	14,3
	Total	4,4	20,1	6,2	11,2	5,1	13,4
2013	Jan	11,6	27,8	3,8	12,2	8,6	16,1
	Feb	4,4	30,9	6,5	10,9	5,2	16,2
	Mar	-1,4	28,2	1,3	13,2	-0,4	17,1
	Apr	6,1	12,0	-14,3	-12,9	-1,3	-6,3
	May	-3,7	5,0	-36,2	-25,0	-15,6	-16,8
	Jun	6,5	8,9	-3,9	8,7	2,7	8,8
	Jul	-1,6	8,7	3,0	11,0	0,1	10,4
	Aug	-0,6	11,6	2,1	7,7	0,4	8,8
	Sep	-1,9	12,6	-4,2	2,6	-2,8	5,2
	Oct	7,0	17,4	3,4	8,5	5,7	10,9
	Nov	-0,6	9,9	3,5	7,6	0,9	8,2
	Dec	0,1	9,1	-3,4	2,2	-1,3	3,9
	Total	2,0	14,7	-3,3	3,8	0,0	6,7

Survey information

- Introduction** 1 Statistics South Africa (Stats SA) conducts a monthly survey of the land transportation industry, covering passenger and freight transportation by rail and road (see paragraph 4 below). This survey is based on a sample drawn from the 2013 business sampling frame (BSF) that contains businesses registered for value added tax (VAT) and income tax.
- 2 In order to improve timeliness, some information for the latest month had to be estimated due to late response. These estimates will be revised in future statistical releases as soon as information becomes available. Published land transportation income estimates exclude VAT.
- Purpose of the survey** 3 The results of the monthly land transport survey are used to compile estimates of the gross domestic product (GDP) and its components, which are used in monitoring the state of the economy and formulation of economic policy. These statistics are also used in the analysis of comparative business and industry performance.
- Scope of the survey** 4 This survey covers enterprises involved in land transportation according to the following type of transportation:
- railway transport (including passenger and freight transportation);
 - 'other' scheduled passenger land transport – urban, suburban and inter-urban bus and coach passenger lines and school buses;
 - 'other' non-scheduled passenger land transport – safaris and sightseeing bus tours, metered taxis and 'other' passenger transport including renting of motor cars with drivers; and
 - freight transport by road.
- Exclusions** 5 Passenger transportation excludes:
- minibus taxis;
 - metropolitan buses (including the Bus Rapid Transport system – BRT); and
 - rental of private cars/buses without drivers.
- Freight transportation excludes:
- renting of trucks without drivers; and
 - in-house transportation.
- Classification** 6 The 1993 edition of the *Standard Industrial Classification of all Economic Activities (SIC)*, Fifth Edition, Report No. 09-90-02, was used to classify the statistical units in the survey. The SIC is based on the 1990 *International Standard Industrial Classification of all Economic Activities (ISIC)* with suitable adaptations for local conditions. Statistics in this publication are presented at SIC division (two-digit) level. Each enterprise is classified to the industry which reflects its predominant activity.
- Collection rate** 7 The preliminary collection rate for the survey on land transportation for December 2013 was 88,0%. The improved collection rate for November 2013 was 90,0%.
- Statistical unit** 8 The statistical unit for which information is compiled and published is an enterprise, defined as a legal unit or a combination of legal units that includes and directly controls all functions necessary to carry out its income activities. The statistical units are derived from and linked to the South African Revenue Service (SARS) administrative data.
- Revised figures** 9 Revised figures are mainly due to late submission of data to Stats SA, or respondents reporting revisions or corrections to their figures. Preliminary figures, as indicated in the relevant tables, are subject to change and when revised will not be indicated as such.

- Related publications** 10 Users may also wish to refer to the following publications available from Stats SA -
 - *Bulletin of Statistics* issued quarterly; and
 - *SA Statistics* issued annually.

- Rounding-off of figures** 11 Where figures have been rounded off, discrepancies may occur between sums of the component items and the totals.

- Historical data** 12 Historical land transport data are available on the Stats SA webpage. To access the data electronically, use the following link:
http://beta2.statssa.gov.za/?page_id=1849

- Past publication** 13 Past land transport releases are available on the Stats SA webpage. To access the releases electronically, use the following link:
http://beta2.statssa.gov.za/?page_id=1866&PPN=P7162&SCH=5704

Technical notes

- Survey methodology and design** 1 The survey is conducted on a monthly basis. Questionnaires are sent to a sample of about 700 enterprises from a population of about 3 800 enterprises. Completed questionnaires are required to be returned to Stats SA within 10 days after the end of the reference month. Fax and telephone reminders are used to follow up on non-respondents.

- 2 A stratified random sample was drawn at the SIC four-digit level in April 2013 from Stats SA’s business sampling frame (BSF). Strata were formed using a combination of Standard Industrial Classification and the measure of size classes for enterprises (see paragraph 3 below).

The Neyman optimal allocation formula given below was used to allocate samples to each stratum.

$$n_h = \frac{N_h S_h}{\sum N_h S_h}$$

N_h and S_h are the stratum population size and the stratum variance respectively. Neyman allocation formula not only allocates sample sizes to each stratum but also calculates the relative precision for each stratum as well as the relative precision for all strata. The relative precision for these strata did not exceed 0,8%.

- Sample design and class limits** 3 The land transportation industry is divided into four size groups. All large enterprises (size group one) are completely enumerated. Simple random sampling is applied to medium sized (size group two) and to small (size group three and four) enterprises. The total value of income of the large enterprises (size group one) is added to the weighted totals of size groups two, three and four to reflect the total value of income.

Measure of size classes (Rand)

Enterprise size	Size group	Lower limits	Upper limits
Very small	4	0	9 000 000
Small	3	9 000 001	39 000 000
Medium	2	39 000 001	78 000 000
Large	1	78 000 001	

- Sample weighting** 4 For those strata not completely enumerated, the weights to produce estimates are the inverse ratio of the sampling fraction, modified to take account of non-response in the survey. Stratum estimates are calculated and then aggregated with the completely enumerated stratum to form division estimates. These procedures are in line with international best practice.

- Reliability of estimates**
- 5 Data presented in this publication are based on information obtained from a sample and are, therefore, subject to sampling variability; that is, they may differ from the figures that would have been produced if the data had been obtained from all enterprises in the land transport industry in South Africa. Estimates are subject to sampling and non-sampling errors.
 - 6 Inaccuracies may occur because of imperfections in reporting by enterprises and errors made in the collection and processing of the data. Inaccuracies of this kind are referred to as non-sampling errors. Every effort is made to minimise non-sampling errors by careful design of questionnaires, testing them in pilot studies, editing reported data and implementing efficient operating procedures. Fluctuations may occur in consecutive months as a result of seasonal and economic factors.
- Year-on-year percentage change**
- 7 The year-on-year percentage change in a variable for any given period is the change between that period and the corresponding period of the previous year, expressed as a percentage of the latter.
- Contribution (percentage points)**
- 8 The contribution (percentage points) to the annual percentage change for any given period is calculated by multiplying the percentage change of each type of commodity/service by its corresponding weight, divided by 100. The weight is the percentage contribution of each type of commodity/service to total income in the corresponding period of the previous year.

Glossary

Enterprise An enterprise is a legal entity or a combination of legal units that includes and directly controls all functions necessary to carry out its sales activities.

Industry An industry is made up of enterprises engaged in the same or similar kinds of economic activity. Industries are defined in the *System of National Accounts (SNA)* in the same way as in the *Standard Industrial Classification of all Economic Activities, Fifth Edition, Report No. 09-90-02 of January 1993 (SIC)*.

Symbols and abbreviations

BSF	Business sampling frame
GDP	Gross domestic product
ISIC	International Standard Industrial Classification
SIC	Standard Industrial Classification of all Economic Activities
SARS	South African Revenue Service
Stats SA	Statistics South Africa
VAT	Value added tax

Technical enquiries

Ho Chun Cheung Telephone number: (012) 310 6360
Email: hochunc@statssa.gov.za

Keshnee Govender Telephone number: (012) 310 8423
Email: keshneeg@statssa.gov.za

General information

Stats SA publishes approximately 300 different statistical releases each year. It is not economically viable to produce them in more than one of South Africa's eleven official languages. Since the releases are used extensively, not only locally but also by international economic and social-scientific communities, Stats SA releases are published in English only.

Stats SA has copyright on this publication. Users may apply the information as they wish, provided that they acknowledge Stats SA as the source of the basic data wherever they process, apply, utilise, publish or distribute the data: and also that they specify that the relevant application and analysis (where applicable) result from their own processing of the data.

Advanced release calendar

An advanced release calendar is disseminated on www.statssa.gov.za

Stats SA products

A complete set of Stats SA publications is available at the Stats SA Library and the following libraries:

National Library of South Africa, Pretoria Division
National Library of South Africa, Cape Town Division
Natal Society Library, Pietermaritzburg
Library of Parliament, Cape Town
Bloemfontein Public Library
Johannesburg Public Library
Eastern Cape Library Services, King William's Town
Central Regional Library, Polokwane
Central Reference Library, Nelspruit
Central Reference Collection, Kimberley
Central Reference Library, Mmabatho

Stats SA also provides a subscription service.

Electronic services

A large range of data is available via online services. For more detail about our electronic services, contact Stats SA's user information service at (012) 310 8600.

You can visit us on the Internet at: www.statssa.gov.za

General enquiries

User information services	Telephone number: (012) 310 8600 Email address: info@statssa.gov.za
Orders/subscription services	Telephone number: (012) 310 8358 Email address: magdaj@statssa.gov.za
Postal address	Private Bag X44, Pretoria, 0001

Produced by Stats SA