

STATISTICAL RELEASE
P6420

Food and beverages
(Preliminary)

October 2017

Embargoed until:
11 December 2017
13:00

ENQUIRIES:
Keshnee Naidoo
(012) 310 8423

FORTHCOMING ISSUE:
November 2017

EXPECTED RELEASE DATE:
22 January 2018

www.statssa.gov.za
info@statssa.gov.za
T +27 12 310 8911
F +27 12 310 8500

Private Bag X44, Pretoria, 0001, South Africa
ISibalo House, Koch Street, Salvokop, Pretoria, 0002

Contents

Income at constant 2015 prices: results for October 2017 2

Table A – Year-on-year percentage change in food and beverages income at constant 2015 prices by type of income 2

Table B – Year-on-year percentage change in food and beverages income at constant 2015 prices by type of enterprise 2

Table C – Food and beverages income at constant 2015 prices for the latest three months by type of enterprise 2

Figure 1 – Food and beverages income at constant 2015 prices: year-on-year percentage change 3

Figure 2 – Food and beverages income at constant 2015 prices: year-on-year percentage change by type of enterprise 3

Figure 3 – Food and beverages income at constant 2015 prices 4

Tables 5

Table 1 – Food and beverages income at constant 2015 prices (R million) 5

Table 2 – Year-on-year percentage change in food and beverages income at constant 2015 prices 5

Table 3 – Seasonally adjusted food and beverages income at constant 2015 prices 5

Table 4 – Food and beverages income at constant 2015 prices by type of enterprise (R million) 6

Table 5 – Year-on-year percentage change in food and beverages income at constant 2015 prices by type of enterprise 6

Table 6 – Contribution of each type of enterprise to the year-on-year percentage change in food and beverages income at constant 2015 prices (percentage points) 7

Table 7 – Seasonally adjusted food and beverages income at constant 2015 prices by type of enterprise (R million) 7

Table 8 – Food and beverages income at current prices (R million) 8

Table 9 – Year-on-year percentage change in food and beverages income at current prices 8

Table 10 – Seasonally adjusted food and beverages income at current prices 8

Table 11 – Food and beverages income at current prices by type of enterprise (R million) 9

Table 12 – Year-on-year percentage change in food and beverages income at current prices by type of enterprise 9

Table 13 – Contribution of each type of enterprise to the year-on-year percentage change in food and beverages income at current prices (percentage points) 10

Table 14 – Seasonally adjusted food and beverages income at current prices by type of enterprise (R million) 10

Survey information 11

Technical notes 11

Glossary 13

Technical enquiries 13

General information 14

Income at constant 2015 prices: results for October 2017

Table A – Year-on-year percentage change in food and beverages income at constant 2015 prices by type of income

Type of income	May-17	Jun-17	Jul-17	Aug-17	Sep-17	Oct-17
Food sales	-2,2	0,4	1,8	2,8	4,7	0,1
Bar sales	-3,2	1,2	2,9	2,3	-1,0	-3,1
Other income	-2,4	0,9	-8,8	-15,1	-12,1	-10,4
Total	-2,3	0,4	1,7	2,4	3,9	-0,4

Measured in real terms (constant 2015 prices), total income generated by the food and beverages industry decreased by 0,4% in October 2017 compared with October 2016. Negative annual growth rates were recorded for 'other' income (-10,4%) and bar sales (-3,1%) – see Table A.

Table B – Year-on-year percentage change in food and beverages income at constant 2015 prices by type of enterprise

Type of enterprise	May-17	Jun-17	Jul-17	Aug-17	Sep-17	Oct-17
Restaurants and coffee shops	-2,8	-0,5	5,9	5,9	8,2	3,4
Takeaway and fast-food outlets	-1,6	4,7	-0,9	0,8	2,1	-4,7
Catering services	-2,4	-6,6	-6,7	-6,2	-6,4	-3,6
Total	-2,3	0,4	1,7	2,4	3,9	-0,4

In October 2017, negative annual growth rates were recorded for takeaway and fast-food outlets (-4,7% and contributing -1,6 percentage points) and catering services (-3,6% and contributing -0,5 of a percentage point) – see Tables B and 6.

Table C – Food and beverages income at constant 2015 prices for the latest three months by type of enterprise

Type of enterprise	Aug – Oct 2016 (R million)	Weight	Aug – Oct 2017 (R million)	% change between Aug – Oct 2016 and Aug – Oct 2017	Contribution (% points) to the total % change
Restaurants and coffee shops	6 796,6	50,9	7 188,4	5,8	3,0
Takeaway and fast-food outlets	4 686,4	35,1	4 655,4	-0,7	-0,2
Catering services	1 875,1	14,0	1 773,5	-5,4	-0,8
Total	13 358,1	100,0	13 617,3	1,9	1,9

Total income increased by 1,9% in the three months ended October 2017 compared with the three months ended October 2016. The main contributor to this increase was restaurants and coffee shops (5,8% and contributing 3,0 percentage points) – see Table C.

Figure 1 – Food and beverages income at constant 2015 prices: year-on-year percentage change

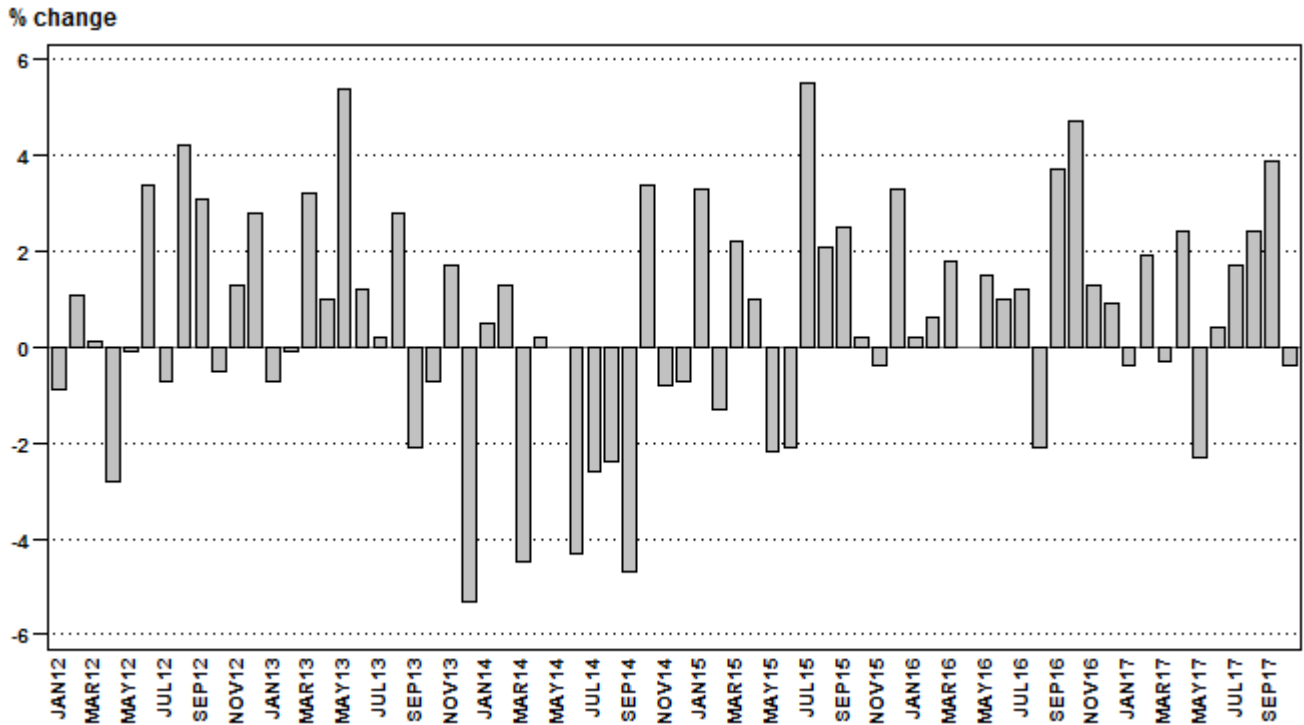


Figure 2 – Food and beverages income at constant 2015 prices: year-on-year percentage change by type of enterprise

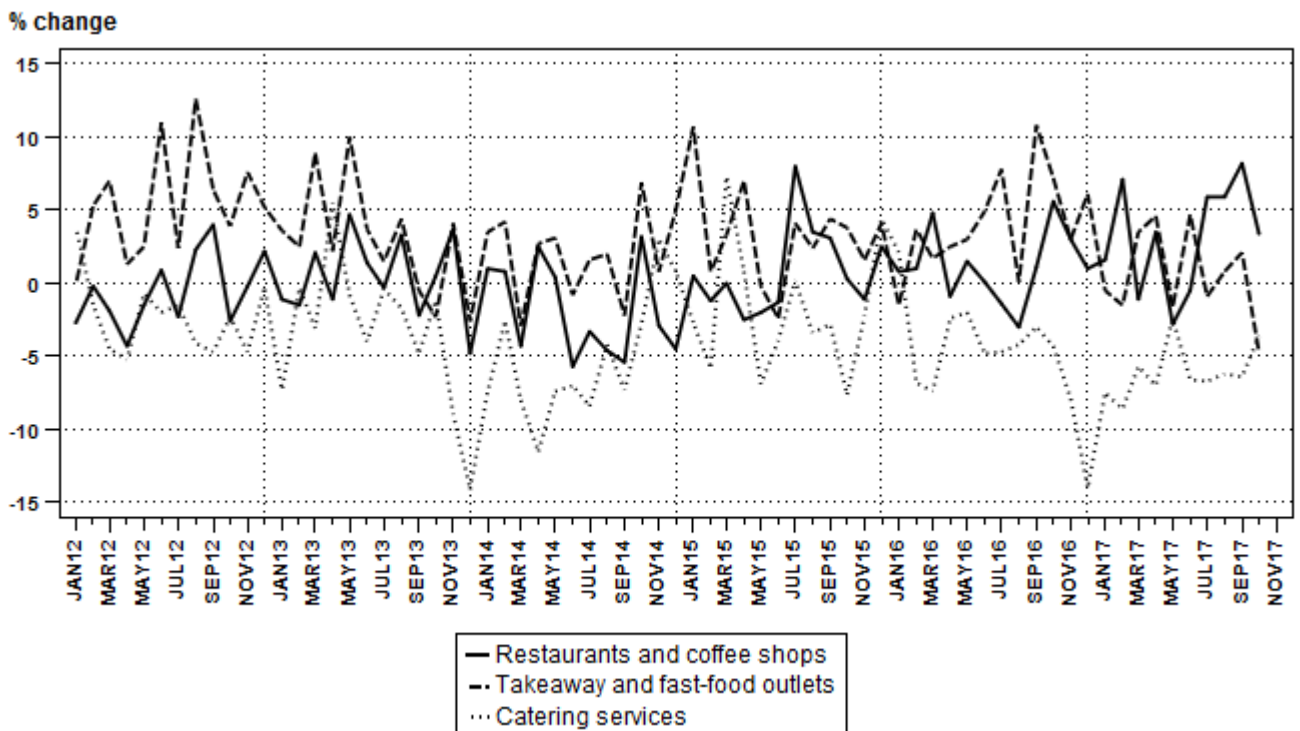
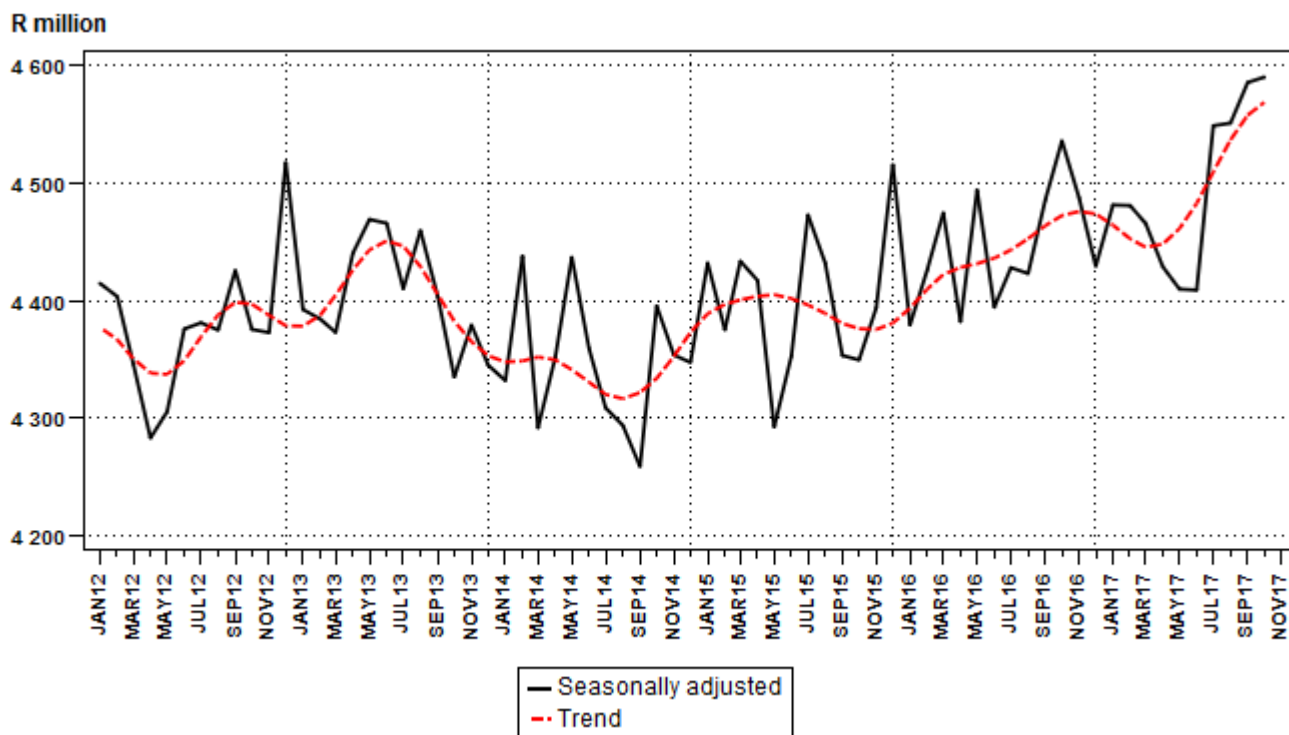


Figure 3 – Food and beverages income at constant 2015 prices



Seasonally adjusted food and beverages income increased by 0,1% month-on-month in October 2017. Restaurants and coffee shops grew by 0,9% – see Table 7.

Risenga Maluleke
Statistician-General

Tables

Table 1 – Food and beverages income at constant 2015 prices (R million)

Month	2012	2013	2014	2015	2016	2017 1/
Jan	4 182,9	4 152,8	4 173,9	4 311,1	4 319,2	4 303,6
Feb	4 076,6	4 073,9	4 125,1	4 070,4	4 095,5	4 173,2
Mar	4 404,6	4 547,7	4 345,0	4 440,5	4 520,4	4 508,4
Apr	4 183,2	4 224,9	4 234,3	4 278,4	4 279,4	4 380,8
May	4 099,4	4 320,8	4 319,8	4 226,7	4 290,4	4 191,0
Jun	4 190,3	4 242,4	4 058,8	3 974,8	4 013,5	4 031,5
Jul	4 270,0	4 280,1	4 170,9	4 399,9	4 452,4	4 529,2
Aug	4 320,0	4 441,4	4 334,6	4 424,6	4 329,9	4 434,9
Sep	4 388,8	4 296,0	4 092,9	4 197,2	4 351,3	4 522,6
Oct	4 341,2	4 310,4	4 456,7	4 467,4	4 676,9	4 659,8
Nov	4 540,1	4 615,4	4 578,2	4 561,2	4 621,6	
Dec	5 597,6	5 298,4	5 259,7	5 431,3	5 480,1	
Total	52 594,7	52 804,2	52 149,9	52 783,5	53 430,6	

1/ Figures for latest month are preliminary.

Table 2 – Year-on-year percentage change in food and beverages income at constant 2015 prices

Month	2013	2014	2015	2016	2017	2017 year-to-date
Jan	-0,7	0,5	3,3	0,2	-0,4	-0,4
Feb	-0,1	1,3	-1,3	0,6	1,9	0,7
Mar	3,2	-4,5	2,2	1,8	-0,3	0,4
Apr	1,0	0,2	1,0	0,0	2,4	0,9
May	5,4	0,0	-2,2	1,5	-2,3	0,2
Jun	1,2	-4,3	-2,1	1,0	0,4	0,3
Jul	0,2	-2,6	5,5	1,2	1,7	0,5
Aug	2,8	-2,4	2,1	-2,1	2,4	0,7
Sep	-2,1	-4,7	2,5	3,7	3,9	1,1
Oct	-0,7	3,4	0,2	4,7	-0,4	0,9
Nov	1,7	-0,8	-0,4	1,3		
Dec	-5,3	-0,7	3,3	0,9		
Total	0,4	-1,2	1,2	1,2		

Table 3 – Seasonally adjusted food and beverages income at constant 2015 prices

Month	R million				Month-on-month % change			
	2014	2015	2016	2017	2014	2015	2016	2017
Jan	4 332,1	4 432,4	4 379,5	4 481,7	-0,3	2,0	-3,0	1,2
Feb	4 438,1	4 375,4	4 426,4	4 481,2	2,4	-1,3	1,1	0,0
Mar	4 291,9	4 433,8	4 475,0	4 465,9	-3,3	1,3	1,1	-0,3
Apr	4 351,7	4 417,4	4 382,3	4 429,0	1,4	-0,4	-2,1	-0,8
May	4 437,1	4 292,7	4 494,4	4 410,0	2,0	-2,8	2,6	-0,4
Jun	4 359,4	4 353,1	4 394,7	4 409,2	-1,8	1,4	-2,2	0,0
Jul	4 308,8	4 473,3	4 428,3	4 549,2	-1,2	2,8	0,8	3,2
Aug	4 293,9	4 432,2	4 423,3	4 551,4	-0,3	-0,9	-0,1	0,0
Sep	4 258,9	4 353,5	4 486,1	4 586,0	-0,8	-1,8	1,4	0,8
Oct	4 395,7	4 349,7	4 536,3	4 590,6	3,2	-0,1	1,1	0,1
Nov	4 353,9	4 394,0	4 487,6		-1,0	1,0	-1,1	
Dec	4 347,6	4 515,9	4 429,5		-0,1	2,8	-1,3	

Table 4 – Food and beverages income at constant 2015 prices by type of enterprise (R million)

		May-17	Jun-17	Jul-17	Aug-17	Sep-17	Oct-17 1/
Restaurants and coffee shops	Food sales	1 841,1	1 746,5	2 078,7	2 024,8	2 042,4	2 168,5
	Bar sales	274,4	247,9	294,2	294,1	296,1	313,6
	Other income	15,7	13,9	18,0	17,7	13,6	17,6
	Total	2 131,2	2 008,3	2 390,9	2 336,6	2 352,1	2 499,7
Takeaway and fast-food outlets	Food sales	1 461,4	1 470,3	1 561,4	1 507,7	1 572,0	1 553,3
	Bar sales	5,7	5,7	6,3	6,7	6,6	6,9
	Other income	0,8	0,8	0,8	0,7	0,8	0,7
	Total	1 467,9	1 476,8	1 568,5	1 515,1	1 579,4	1 560,9
Catering services	Food sales	488,3	447,8	469,0	486,4	485,7	487,9
	Bar sales	50,5	45,2	50,4	50,4	53,7	59,5
	Other income	53,1	53,4	50,4	46,4	51,7	51,8
	Total	591,9	546,4	569,8	583,2	591,1	599,2
Total industry	Food sales	3 790,8	3 664,6	4 109,1	4 018,9	4 100,1	4 209,7
	Bar sales	330,6	298,8	350,9	351,2	356,4	380,0
	Other income	69,6	68,1	69,2	64,8	66,1	70,1
	Total	4 191,0	4 031,5	4 529,2	4 434,9	4 522,6	4 659,8

1/ Figures are preliminary.

Table 5 – Year-on-year percentage change in food and beverages income at constant 2015 prices by type of enterprise

		May-17	Jun-17	Jul-17	Aug-17	Sep-17	Oct-17
Restaurants and coffee shops	Food sales	-2,2	-0,8	6,2	6,8	10,5	5,1
	Bar sales	-6,2	1,8	2,4	0,3	-4,3	-6,6
	Other income	-3,1	4,5	24,1	7,9	-13,4	-3,3
	Total	-2,8	-0,5	5,9	5,9	8,2	3,4
Takeaway and fast-food outlets	Food sales	-1,7	4,7	-1,0	0,8	2,1	-4,7
	Bar sales	18,8	7,5	10,5	21,8	20,0	16,9
	Other income	-11,1	-27,3	14,3	-12,5	-11,1	-30,0
	Total	-1,6	4,7	-0,9	0,8	2,1	-4,7
Catering services	Food sales	-3,8	-7,7	-6,6	-6,1	-8,0	-4,7
	Bar sales	13,7	-3,0	5,0	13,0	19,6	18,1
	Other income	-2,0	0,6	-17,0	-21,5	-11,8	-12,2
	Total	-2,4	-6,6	-6,7	-6,2	-6,4	-3,6
Total industry	Food sales	-2,2	0,4	1,8	2,8	4,7	0,1
	Bar sales	-3,2	1,2	2,9	2,3	-1,0	-3,1
	Other income	-2,4	0,9	-8,8	-15,1	-12,1	-10,4
	Total	-2,3	0,4	1,7	2,4	3,9	-0,4

Table 6 – Contribution of each type of enterprise to the year-on-year percentage change in food and beverages income at constant 2015 prices (percentage points)

		May-17	Jun-17	Jul-17	Aug-17	Sep-17	Oct-17
Restaurants and coffee shops	Food sales	-1,0	-0,4	2,7	3,0	4,5	2,2
	Bar sales	-0,4	0,1	0,2	0,0	-0,3	-0,5
	Other income	0,0	0,0	0,1	0,0	0,0	0,0
	Total	-1,4	-0,2	3,0	3,0	4,1	1,8
Takeaway and fast-food outlets	Food sales	-0,6	1,6	-0,3	0,3	0,7	-1,7
	Bar sales	0,0	0,0	0,0	0,0	0,0	0,0
	Other income	0,0	0,0	0,0	0,0	0,0	0,0
	Total	-0,6	1,6	-0,3	0,3	0,8	-1,6
Catering services	Food sales	-0,4	-0,9	-0,7	-0,7	-1,0	-0,5
	Bar sales	0,1	0,0	0,1	0,1	0,2	0,2
	Other income	0,0	0,0	-0,2	-0,3	-0,2	-0,2
	Total	-0,3	-1,0	-0,9	-0,9	-0,9	-0,5
Total industry	Food sales	-2,0	0,3	1,7	2,5	4,2	0,1
	Bar sales	-0,3	0,1	0,2	0,2	-0,1	-0,3
	Other income	0,0	0,0	-0,2	-0,3	-0,2	-0,2
	Total	-2,3	0,4	1,7	2,4	3,9	-0,4

Table 7 – Seasonally adjusted food and beverages income at constant 2015 prices by type of enterprise (R million)

		Jun-17	Jul-17	Aug-17	Sep-17	Oct-17	Month-on-month % change
Restaurants and coffee shops	Food sales	1 958,0	2 078,0	2 087,6	2 112,1	2 132,1	0,9
	Bar sales	292,8	314,8	304,1	300,4	300,3	0,0
	Other income	17,9	21,3	18,7	14,8	16,8	13,5
	Total	2 268,7	2 414,1	2 410,4	2 427,2	2 449,2	0,9
Takeaway and fast-food outlets	Food sales	1 564,8	1 545,0	1 564,0	1 567,3	1 557,4	-0,6
	Bar sales	6,1	6,3	6,7	6,8	6,8	0,0
	Other income	0,9	0,8	0,6	0,8	0,7	-12,5
	Total	1 571,7	1 552,1	1 571,3	1 575,0	1 564,9	-0,6
Catering services	Food sales	466,5	480,0	469,2	476,9	467,8	-1,9
	Bar sales	48,9	52,6	54,1	55,2	56,8	2,9
	Other income	53,4	50,4	46,4	51,7	51,8	0,2
	Total	568,8	583,1	569,7	583,8	576,4	-1,3
Total industry	Food sales	3 989,3	4 102,9	4 120,8	4 156,3	4 157,3	0,0
	Bar sales	347,8	373,8	364,8	362,4	363,9	0,4
	Other income	72,1	72,5	65,8	67,3	69,3	3,0
	Total	4 409,2	4 549,2	4 551,4	4 586,0	4 590,6	0,1

Table 8 – Food and beverages income at current prices (R million)

Month	2012	2013	2014	2015	2016	2017 1/
Jan	3 316,2	3 506,1	3 758,7	4 199,1	4 460,7	4 761,6
Feb	3 235,7	3 444,8	3 721,6	3 969,8	4 254,8	4 631,5
Mar	3 522,1	3 874,0	3 971,6	4 341,4	4 722,8	5 012,5
Apr	3 398,8	3 625,9	3 914,9	4 207,8	4 494,3	4 892,4
May	3 354,0	3 732,8	4 017,4	4 211,9	4 572,3	4 718,2
Jun	3 436,2	3 696,0	3 811,8	3 983,3	4 314,8	4 556,5
Jul	3 505,3	3 736,8	3 939,3	4 428,3	4 831,7	5 176,8
Aug	3 553,0	3 890,6	4 133,5	4 472,4	4 703,6	5 094,6
Sep	3 610,0	3 771,2	3 917,8	4 247,0	4 730,9	5 201,1
Oct	3 581,2	3 789,2	4 261,0	4 533,8	5 098,0	5 378,3
Nov	3 792,0	4 096,7	4 423,9	4 647,3	5 047,1	
Dec	4 698,9	4 747,9	5 116,5	5 541,7	6 022,7	
Total	43 003,4	45 912,0	48 988,0	52 783,8	57 253,7	

1/ Figures for latest month are preliminary.

Table 9 – Year-on-year percentage change in food and beverages income at current prices

Month	2013	2014	2015	2016	2017	2017 year-to-date
Jan	5,7	7,2	11,7	6,2	6,7	6,7
Feb	6,5	8,0	6,7	7,2	8,9	7,8
Mar	10,0	2,5	9,3	8,8	6,1	7,2
Apr	6,7	8,0	7,5	6,8	8,9	7,6
May	11,3	7,6	4,8	8,6	3,2	6,7
Jun	7,6	3,1	4,5	8,3	5,6	6,5
Jul	6,6	5,4	12,4	9,1	7,1	6,6
Aug	9,5	6,2	8,2	5,2	8,3	6,8
Sep	4,5	3,9	8,4	11,4	9,9	7,2
Oct	5,8	12,5	6,4	12,4	5,5	7,0
Nov	8,0	8,0	5,0	8,6		
Dec	1,0	7,8	8,3	8,7		
Total	6,8	6,7	7,7	8,5		

Table 10 – Seasonally adjusted food and beverages income at current prices

Month	R million				Month-on-month % change			
	2014	2015	2016	2017	2014	2015	2016	2017
Jan	3 898,3	4 326,0	4 531,3	4 964,7	0,1	2,6	-1,1	2,3
Feb	4 006,9	4 267,8	4 604,0	4 976,5	2,8	-1,3	1,6	0,2
Mar	3 937,3	4 330,2	4 672,5	4 975,0	-1,7	1,5	1,5	0,0
Apr	4 025,3	4 362,0	4 652,6	4 971,6	2,2	0,7	-0,4	-0,1
May	4 138,6	4 299,4	4 811,8	4 982,0	2,8	-1,4	3,4	0,2
Jun	4 068,9	4 358,2	4 685,0	4 960,4	-1,7	1,4	-2,6	-0,4
Jul	4 039,2	4 455,7	4 780,1	5 161,9	-0,7	2,2	2,0	4,1
Aug	4 095,2	4 468,4	4 793,9	5 205,8	1,4	0,3	0,3	0,9
Sep	4 101,5	4 418,1	4 876,5	5 292,6	0,2	-1,1	1,7	1,7
Oct	4 200,0	4 430,2	4 958,8	5 321,8	2,4	0,3	1,7	0,6
Nov	4 212,8	4 472,3	4 912,3		0,3	1,0	-0,9	
Dec	4 216,3	4 582,2	4 853,3		0,1	2,5	-1,2	

Table 11 – Food and beverages income at current prices by type of enterprise (R million)

		May-17	Jun-17	Jul-17	Aug-17	Sep-17	Oct-17 1/
Restaurants and coffee shops	Food sales	2 080,6	1 981,0	2 387,0	2 337,6	2 360,5	2 515,5
	Bar sales	295,7	268,0	318,2	318,8	321,3	341,9
	Other income	17,6	15,7	20,5	20,3	15,6	20,2
	Total	2 393,9	2 264,7	2 725,7	2 676,7	2 697,4	2 877,6
Takeaway and fast-food outlets	Food sales	1 651,5	1 667,7	1 793,0	1 740,6	1 816,8	1 801,9
	Bar sales	6,1	6,2	6,8	7,3	7,2	7,5
	Other income	0,9	0,9	0,9	0,8	0,9	0,8
	Total	1 658,5	1 674,8	1 800,7	1 748,7	1 824,9	1 810,2
Catering services	Food sales	551,8	507,9	538,5	561,5	561,3	566,0
	Bar sales	54,4	48,9	54,5	54,6	58,3	64,9
	Other income	59,6	60,2	57,4	53,1	59,2	59,6
	Total	665,8	617,0	650,4	669,2	678,8	690,5
Total industry	Food sales	4 283,9	4 156,6	4 718,5	4 639,7	4 738,6	4 883,4
	Bar sales	356,2	323,1	379,5	380,7	386,8	414,3
	Other income	78,1	76,8	78,8	74,2	75,7	80,6
	Total	4 718,2	4 556,5	5 176,8	5 094,6	5 201,1	5 378,3

1/ Figures are preliminary.

Table 12 – Year-on-year percentage change in food and beverages income at current prices by type of enterprise

		May-17	Jun-17	Jul-17	Aug-17	Sep-17	Oct-17
Restaurants and coffee shops	Food sales	3,5	4,5	12,2	13,2	17,2	11,6
	Bar sales	-3,8	4,2	4,8	2,9	-1,7	-4,3
	Other income	1,7	9,8	30,6	14,0	-8,8	2,0
	Total	2,6	4,5	11,4	11,9	14,4	9,3
Takeaway and fast-food outlets	Food sales	4,1	10,3	4,5	6,8	8,2	1,2
	Bar sales	22,0	10,7	13,3	25,9	24,1	19,0
	Other income	-10,0	-25,0	12,5	-11,1	-10,0	-27,3
	Total	4,2	10,3	4,6	6,9	8,3	1,2
Catering services	Food sales	1,9	-2,8	-1,4	-0,5	-2,5	1,2
	Bar sales	16,5	-0,6	7,5	15,9	23,0	20,9
	Other income	3,3	5,6	-12,8	-17,2	-7,1	-7,3
	Total	3,1	-1,8	-1,8	-0,9	-1,2	1,9
Total industry	Food sales	3,5	5,8	7,5	9,0	11,0	6,3
	Bar sales	-0,8	3,6	5,3	4,9	1,7	-0,7
	Other income	2,8	5,9	-4,3	-10,4	-7,5	-5,4
	Total	3,2	5,6	7,1	8,3	9,9	5,5

Table 13 – Contribution of each type of enterprise to the year-on-year percentage change in food and beverages income at current prices (percentage points)

		May-17	Jun-17	Jul-17	Aug-17	Sep-17	Oct-17
Restaurants and coffee shops	Food sales	1,6	2,0	5,4	5,8	7,3	5,1
	Bar sales	-0,3	0,3	0,3	0,2	-0,1	-0,3
	Other income	0,0	0,0	0,1	0,1	0,0	0,0
	Total	1,3	2,2	5,8	6,0	7,2	4,8
Takeaway and fast-food outlets	Food sales	1,4	3,6	1,6	2,4	2,9	0,4
	Bar sales	0,0	0,0	0,0	0,0	0,0	0,0
	Other income	0,0	0,0	0,0	0,0	0,0	0,0
	Total	1,5	3,6	1,6	2,4	2,9	0,4
Catering services	Food sales	0,2	-0,3	-0,2	-0,1	-0,3	0,1
	Bar sales	0,2	0,0	0,1	0,2	0,2	0,2
	Other income	0,0	0,1	-0,2	-0,2	-0,1	-0,1
	Total	0,4	-0,3	-0,3	-0,1	-0,2	0,3
Total industry	Food sales	3,2	5,2	6,8	8,1	9,9	5,6
	Bar sales	-0,1	0,3	0,4	0,4	0,1	-0,1
	Other income	0,0	0,1	-0,1	-0,2	-0,1	-0,1
	Total	3,2	5,6	7,1	8,3	9,9	5,5

Table 14 – Seasonally adjusted food and beverages income at current prices by type of enterprise (R million)

		Jun-17	Jul-17	Aug-17	Sep-17	Oct-17	Month-on-month % change
Restaurants and coffee shops	Food sales	2 209,2	2 362,6	2 394,7	2 454,1	2 489,2	1,4
	Bar sales	313,3	339,1	331,5	324,8	330,9	1,9
	Other income	19,8	23,8	21,1	16,9	19,1	13,0
	Total	2 542,3	2 725,5	2 747,4	2 795,7	2 839,2	1,6
Takeaway and fast-food outlets	Food sales	1 770,4	1 766,1	1 797,0	1 820,9	1 808,6	-0,7
	Bar sales	6,6	6,8	7,2	7,4	7,2	-2,7
	Other income	0,9	0,9	0,8	0,9	0,8	-11,1
	Total	1 777,9	1 773,8	1 804,9	1 829,2	1 816,6	-0,7
Catering services	Food sales	526,0	548,3	542,1	549,7	547,0	-0,5
	Bar sales	52,8	56,9	58,3	59,8	61,5	2,8
	Other income	61,4	57,5	53,2	58,3	57,5	-1,4
	Total	640,3	662,6	653,5	667,7	666,0	-0,3
Total industry	Food sales	4 505,6	4 676,9	4 733,8	4 824,7	4 844,8	0,4
	Bar sales	372,7	402,8	397,0	391,9	399,6	2,0
	Other income	82,2	82,2	75,0	76,0	77,5	2,0
	Total	4 960,4	5 161,9	5 205,8	5 292,6	5 321,8	0,6

Survey information

Introduction

The results presented in this publication are derived from the monthly survey of the food and beverages industry. This survey is based on a sample drawn from the 2017 business sampling frame (BSF) that contains businesses registered for value added tax (VAT).

Purpose of the survey

The food and beverages survey is a monthly survey covering a sample of public and private enterprises involved in the preparation of meals and drinks for immediate consumption in South Africa. The purpose of this survey is to monitor trends in the food and beverages industry.

The results of the food and beverage survey are used to compile estimates of the tourism satellite accounts (TSA) and the gross domestic product (GDP) and its components, which are used to develop and monitor government policy. These statistics are also used in the analysis of comparative business and industry performance.

Scope of the survey

This survey covers the following tax registered private and public enterprises, that are mainly engaged in providing food and beverages for immediate consumption:

- restaurants and coffee shops;
- takeaway and fast-food outlets; and
- catering services.

Classification by industry

The 1993 edition of the *Standard Industrial Classification of all Economic Activities* (SIC), Fifth Edition, Report No 09-90-02, was used to classify the statistical units in the survey. The SIC is based on the 1990 *International Standard Industrial Classification of all Economic Activities* (ISIC) with suitable adaptations for local conditions. Each enterprise is classified to an industry which reflects its predominant activity. Statistics in this publication are presented at 5-digit SIC level.

Collection rate

The preliminary collection rate for the survey on food and beverages for October 2017 was 81,7%. The improved collection rate for September 2017 was 87,4%.

Statistical unit

The statistical unit for which information is compiled and published is an enterprise, defined as a legal unit or a combination of legal units that includes and directly controls all functions necessary to carry out its income activities. The statistical units are derived from and linked to the South African Revenue Service (SARS) administrative data.

Revised figures

Revised figures are mainly due to late submission of data to Stats SA, or respondents reporting revisions or corrections to their figures. Preliminary figures, as indicated in the relevant tables, are subject to change and when revised will not be indicated as such. Data are edited at the enterprise level.

Rounding-off of figures

Where figures have been rounded off, discrepancies may occur between sums of the component items and the totals.

Historical data

Historical food and beverages data are available on the Stats SA website. To access the data electronically, use the following link: [Click to download historical data](#)

Past publications

Past food and beverages releases are available on the Stats SA website. To access the releases electronically, use the following link: [Click to download past releases](#)

Technical notes

Survey methodology and design

The survey was conducted by mail, fax and telephone.

A sample of 1 048 enterprises was drawn from a population of 7 754 enterprises using stratified simple random sampling in April 2017. The enterprises were first stratified at 5-digit level according to the SIC and then by size of enterprises. Large enterprises are completely enumerated. Turnover was used as the measure of size.

Class limits

The enterprises are divided into four size groups according to turnover. Large enterprises are enterprises with an annual turnover of R26 million and more. The cut-off points which define the size groups, namely large, medium, small and very small enterprises are given in Table D.

Table D – Measure of size classes (Rand)

Enterprise size	Size group	Lower limits	Upper limits
Very small	4	469 817	10 200 000
Small	3	10 200 001	12 000 000
Medium	2	12 000 001	26 000 000
Large	1	26 000 001	

Sample weighting

For those strata not completely enumerated, the weights to produce estimates are the inverse ratio of the sampling fraction, modified to take account of non-collection in the survey. Stratum estimates are calculated and then aggregated with the completely enumerated stratum to form subgroup estimates. These procedures are in line with international best practice.

Seasonal adjustment

Seasonally adjusted estimates are generated each month using the X-12-ARIMA Seasonal Adjustment Program developed by the US Bureau of the Census. Seasonal adjustment is a means of removing the estimated effects of normal seasonal variation from the series so that the effects of other influences on the series can be recognised more clearly. Seasonal adjustment does not aim to remove irregular or non-seasonal influences which may be present in any particular month. Influences that are volatile or unsystematic can still make it difficult to interpret the movement of the series even after adjustment for seasonal variations. Therefore the month-to-month movements of seasonally adjusted estimates may not be reliable indicators of trend behaviour. The X-12-ARIMA procedure for food and beverages income is described in more detail on the Stats SA website at: [Click to download seasonal adjustment food and beverages April 2017](#)

Trend cycle

The trend is the long-term pattern or movement of a time series. The X-12-ARIMA Seasonal Adjustment Program is used for smoothing seasonally adjusted estimates to estimates of the underlying trend cycle.

Reliability of estimates

Data presented in this publication are based on information obtained from a sample and are, therefore, subject to sampling variability; that is, it may differ from the figures that would have been produced if the data had been obtained from all enterprises in the food and beverages industry in South Africa.

Relative standard error

One measure of the likely difference is given by the standard error (SE), which indicates the extent to which an estimate might have varied by chance because only a sample of enterprises was used. The relative standard error (RSE) provides an immediate indication of the percentage errors likely to have occurred due to sampling, and thus avoids the need to refer to the size of the estimate.

Table E – Estimate of total food and beverages industry income within 95% confidence limits – October 2017

	Lower limit (R million)	Income (R million)	Upper limit (R million)	Relative standard error (RSE) %
Total income	4 451,2	5 378,3	6 693,0	10,3

Non-sampling errors

Inaccuracies may occur because of imperfections in reporting by enterprises and errors made in the collection and processing of the data. Inaccuracies of this kind are referred to as non-sampling errors. Every effort is made to minimise non-sampling errors by careful design of questionnaires, testing them in pilot studies, editing reported data and implementing efficient operating procedures. Non-sampling errors occur in both sample surveys and censuses.

Constant prices	Food and beverages income at constant prices by type of enterprise and by type of income is estimated by deflating income at current prices using the relevant components of the consumer price index for restaurants.
Year-on-year percentage change	The year-on-year percentage change in a variable for any given period is the change between that period and the corresponding period of the previous year, expressed as a percentage of the latter.
Contribution (percentage points)	The contribution (percentage points) to the annual percentage change for any given period is calculated by multiplying the percentage change of each type of enterprise by its corresponding weight, divided by 100. The weight is the percentage contribution of each type of enterprise to total income in the corresponding period of the previous year.

Glossary

Enterprise	A legal unit or a combination of legal units that includes and directly controls all functions necessary to carry out its activities.														
Industry	It is a group of enterprises engaged in the same or similar kinds of economic activity. Industries are defined in the <i>System of National Accounts</i> (SNA) in the same way as in the <i>Standard Industrial Classification of all Economic Activities, Fifth Edition</i> ; Report No 09-90-02 of January 1993 (SIC).														
Income from food sales	Refers to income from the sale of meals and non-alcoholic drinks.														
Income from bar sales	Refers to income from liquor sales.														
Other income	Includes all income not earned from bar or food sales.														
Symbols and abbreviations	<table> <tr> <td>BSF</td> <td>Business sampling frame</td> </tr> <tr> <td>GDP</td> <td>Gross domestic product</td> </tr> <tr> <td>SARS</td> <td>South African Revenue Service</td> </tr> <tr> <td>SIC</td> <td>Standard Industrial Classification of all Economic Activities</td> </tr> <tr> <td>Stats SA</td> <td>Statistics South Africa</td> </tr> <tr> <td>TSA</td> <td>Tourism satellite accounts</td> </tr> <tr> <td>VAT</td> <td>Value added tax</td> </tr> </table>	BSF	Business sampling frame	GDP	Gross domestic product	SARS	South African Revenue Service	SIC	Standard Industrial Classification of all Economic Activities	Stats SA	Statistics South Africa	TSA	Tourism satellite accounts	VAT	Value added tax
BSF	Business sampling frame														
GDP	Gross domestic product														
SARS	South African Revenue Service														
SIC	Standard Industrial Classification of all Economic Activities														
Stats SA	Statistics South Africa														
TSA	Tourism satellite accounts														
VAT	Value added tax														
Restaurants and coffee shops	Enterprises involved in the sale and provision of meals and drinks, ordered from a menu, prepared on the premises for immediate consumption and with provided seating.														
Takeaway and fast-food outlets	Enterprises involved in the sale and provision of meals and drinks, ordered from a menu, prepared on the premises for takeaway purposes in a packaged format, at a stand or in a location, with or without provided seating.														
Catering services	Enterprises involved in the sale and supply of meals and drinks prepared on the premises on a contract basis and brought to other premises chosen by the person ordering them, to be served for immediate consumption to guests or customers. Catering services also include bars, taverns, other drinking places, ice-cream parlours, etc.														

Technical enquiries

Kgomotso Makolomako	Telephone number: (012) 337 6223 Email: kgomotsoma@statssa.gov.za
Keshnee Naidoo	Telephone number: (012) 310 8423 Email: keshneen@statssa.gov.za

General information

Stats SA publishes approximately 300 different statistical releases each year. It is not economically viable to produce them in more than one of South Africa's eleven official languages. Since the releases are used extensively, not only locally but also by international economic and social-scientific communities, Stats SA releases are published in English only.

Stats SA has copyright on this publication. Users may apply the information as they wish, provided that they acknowledge Stats SA as the source of the basic data wherever they process, apply, utilise, publish or distribute the data; and also that they specify that the relevant application and analysis (where applicable) result from their own processing of the data.

Stats SA products

A complete set of Stats SA publications is available at the Stats SA Library and the following libraries:

National Library of South Africa, Pretoria Division
National Library of South Africa, Cape Town Division
Natal Society Library, Pietermaritzburg
Library of Parliament, Cape Town
Bloemfontein Public Library
Johannesburg Public Library
Eastern Cape Library Services, King William's Town
Central Regional Library, Polokwane
Central Reference Library, Mbombela
Central Reference Collection, Kimberley
Central Reference Library, Mmabatho

Stats SA also provides a subscription service.

Electronic services

A large range of data is available via online services. For more detail about our electronic services, contact Stats SA's user information service at (012) 310 8600.

You can visit us on the internet at: www.statssa.gov.za

General enquiries

User information services Telephone number: (012) 310 8600
Email address: info@statssa.gov.za

Postal address Private Bag X44, Pretoria, 0001

Produced by Stats SA