



stats sa

Department:
Statistics South Africa
REPUBLIC OF SOUTH AFRICA

Private Bag X44, Pretoria, 0001, South Africa, ISibalo House, Koch Street, Salvokop, Pretoria, 0002
www.statssa.gov.za, info@statssa.gov.za, Tel +27 12 310 8911

STATISTICAL RELEASE

P6420

Food and beverages (Preliminary)

June 2020

Embargoed until:
17 August 2020
13:00

ENQUIRIES:
Juan-Pierre Terblanche
(072) 901 1222

FORTHCOMING ISSUE:
July 2020

EXPECTED RELEASE DATE:
21 September 2020



Contents

Income at constant 2015 prices: results for June 2020	3
Table A – Year-on-year percentage change in food and beverages income at constant 2015 prices by type of income	3
Table B – Year-on-year percentage change in food and beverages income at constant 2015 prices by type of enterprise	3
Table C – Food and beverages income at constant 2015 prices for the latest three months by type of enterprise	3
Figure 1 – Food and beverages income at constant 2015 prices: year-on-year percentage change	4
Figure 2 – Food and beverages income at constant 2015 prices: year-on-year percentage change by type of enterprise	4
Figure 3 – Food and beverages income at constant 2015 prices	5
Tables	6
Table 1 – Food and beverages income at constant 2015 prices (R million)	6
Table 2 – Year-on-year percentage change in food and beverages income at constant 2015 prices	6
Table 3 – Seasonally adjusted food and beverages income at constant 2015 prices	6
Table 4 – Food and beverages income at constant 2015 prices by type of enterprise (R million)	7
Table 5 – Year-on-year percentage change in food and beverages income at constant 2015 prices by type of enterprise	7
Table 6 – Contribution of each type of enterprise to the year-on-year percentage change in food and beverages income at constant 2015 prices (percentage points)	8
Table 7 – Seasonally adjusted food and beverages income at constant 2015 prices by type of enterprise (R million)	8
Table 8 – Food and beverages income at current prices (R million)	9
Table 9 – Year-on-year percentage change in food and beverages income at current prices	9
Table 10 – Seasonally adjusted food and beverages income at current prices	9
Table 11 – Food and beverages income at current prices by type of enterprise (R million)	10
Table 12 – Year-on-year percentage change in food and beverages income at current prices by type of enterprise	10
Table 13 – Contribution of each type of enterprise to the year-on-year percentage change in food and beverages income at current prices (percentage points).....	11
Table 14 – Seasonally adjusted food and beverages income at current prices by type of enterprise (R million).....	11
Survey information	12
Technical notes	12
Glossary	14
Technical enquiries	14
General information	15

Income at constant 2015 prices: results for June 2020

Table A – Year-on-year percentage change in food and beverages income at constant 2015 prices by type of income

Type of income	Jan-20	Feb-20	Mar-20	Apr-20	May-20	Jun-20
Food sales	3,1	1,2	-29,4	-95,8	-87,3	-47,2
Bar sales	0,9	-4,3	-44,8	-100,0	-100,0	-86,6
Other income	-9,8	-26,8	-44,3	-81,8	-75,1	-59,8
Total	2,6	0,1	-30,8	-95,7	-87,8	-50,3

The COVID-19 pandemic and lockdown regulations since 27 March 2020 have had an extensive impact on economic activity. Measured in real terms (constant 2015 prices), total income generated by the food and beverages industry decreased by 50,3% in June 2020 compared with June 2019. The largest decreases were recorded for:

- bar sales (-86,6%); and
- 'other' income (-59,8%) – see Table A.

Table B – Year-on-year percentage change in food and beverages income at constant 2015 prices by type of enterprise

Type of enterprise	Jan-20	Feb-20	Mar-20	Apr-20	May-20	Jun-20
Restaurants and coffee shops	4,1	1,3	-35,0	-100,0	-97,7	-72,6
Takeaway and fast-food outlets	7,5	3,1	-23,6	-100,0	-85,8	-15,4
Catering services	-12,9	-10,5	-30,4	-71,8	-60,0	-51,5
Total	2,6	0,1	-30,8	-95,7	-87,8	-50,3

In June 2020, the main contributors to the 50,3% year-on-year decrease were:

- restaurants and coffee shops (-72,6% and contributing -37,4 percentage points); and
- catering services (-51,5% and contributing -7,7 percentage points) – see Tables B and 6.

Table C – Food and beverages income at constant 2015 prices for the latest three months by type of enterprise

Type of enterprise	Apr – Jun 2019 (R million)	Weight	Apr – Jun 2020 (R million)	% change between Apr – Jun 2019 and Apr – Jun 2020	Contribution (% points) to the total % change
Restaurants and coffee shops	6 979,9	51,7	687,0	-90,2	-46,6
Takeaway and fast-food outlets	4 467,9	33,1	1 486,8	-66,7	-22,1
Catering services	2 063,1	15,3	801,1	-61,2	-9,4
Total	13 510,9	100,0	2 974,9	-78,0	-78,0

Total income decreased by 78,0% in the second quarter of 2020 compared with the second quarter of 2019. The main contributors to this decrease were:

- restaurants and coffee shops (-90,2% and contributing -46,6 percentage points); and
- takeaway and fast-food outlets (-66,7% and contributing -22,1 percentage points) – see Table C.

Figure 1 – Food and beverages income at constant 2015 prices: year-on-year percentage change

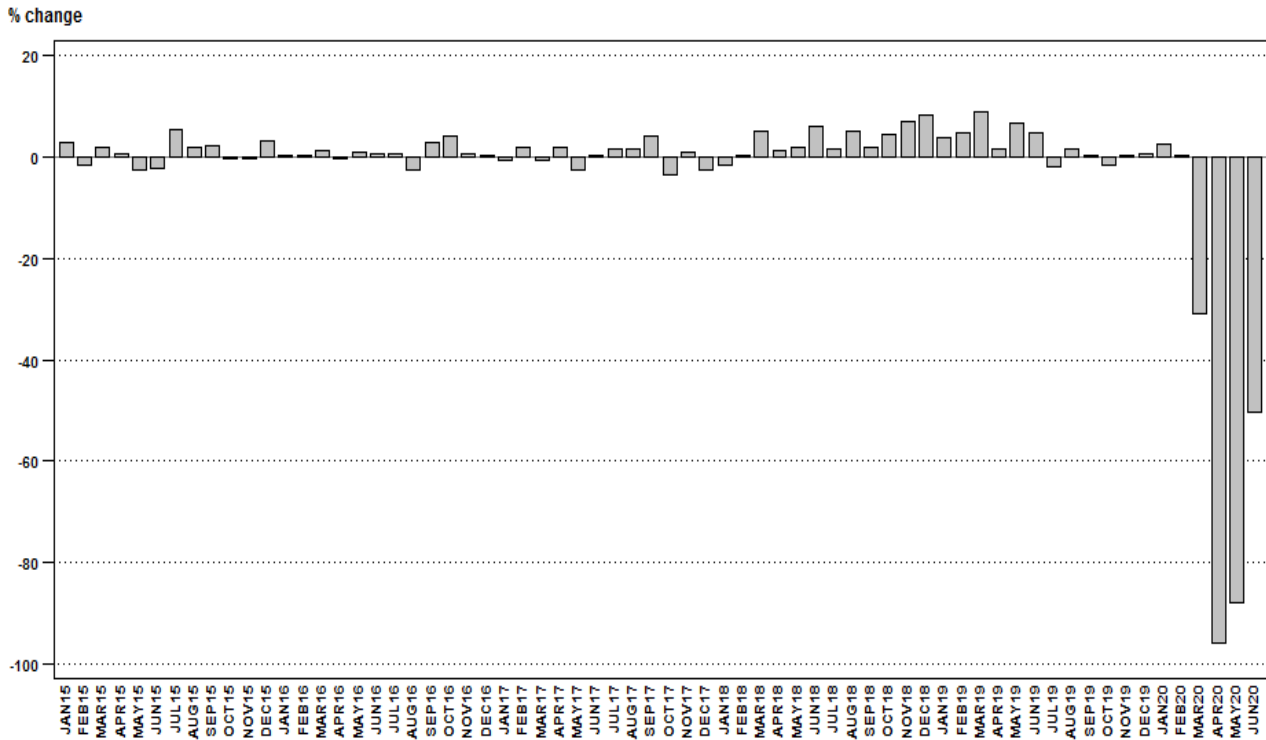


Figure 2 – Food and beverages income at constant 2015 prices: year-on-year percentage change by type of enterprise

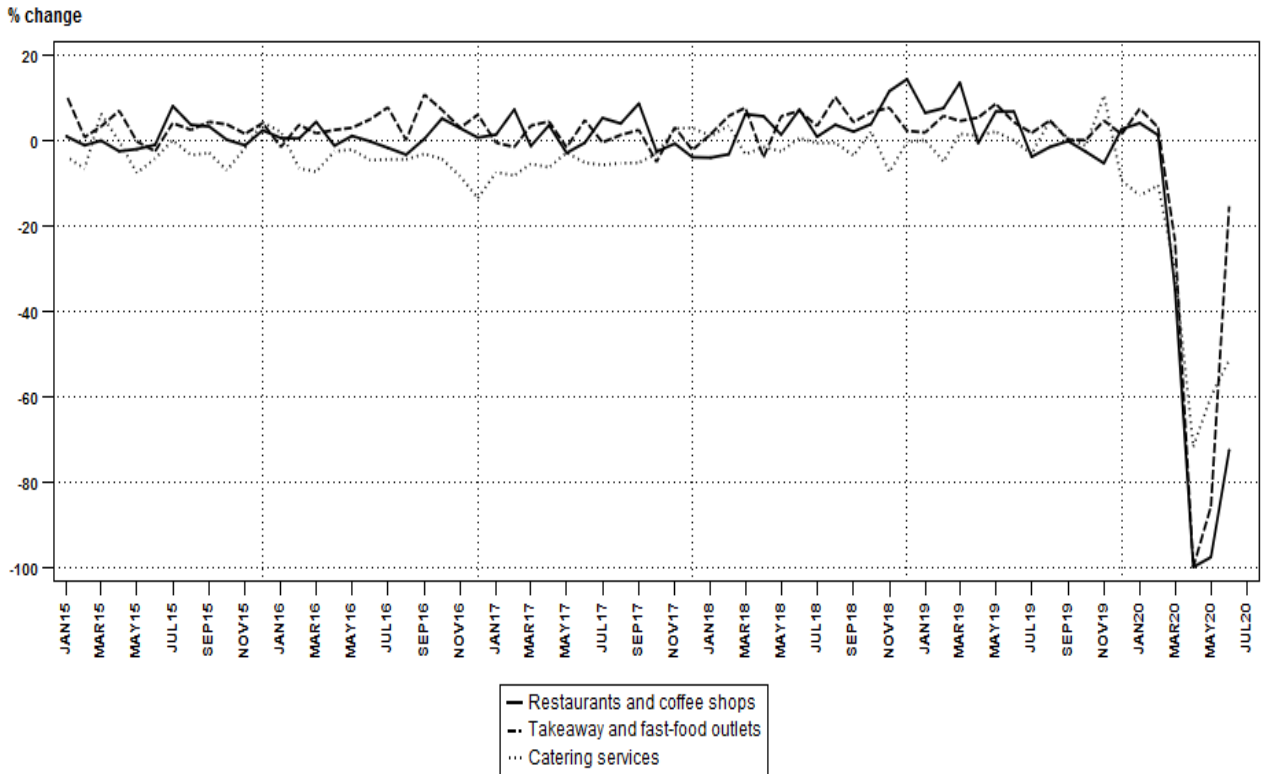
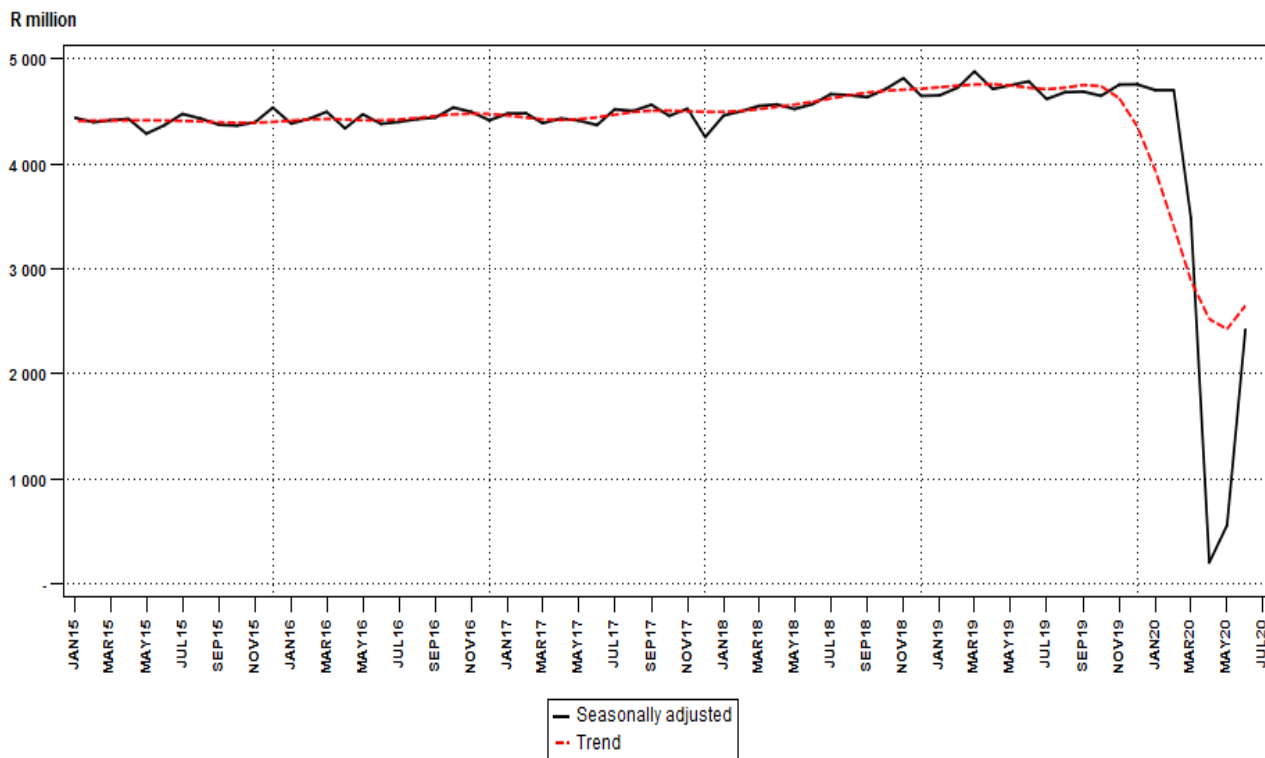


Figure 3 – Food and beverages income at constant 2015 prices



Seasonally adjusted food and beverages income increased by 333,8% in June 2020 compared with May 2020. This followed month-on-month changes of 175,8% in May 2020 and -94,2% in April 2020 – see Tables 3 and 7.

Risenga Maluleke
Statistician-General

Tables

Table 1 – Food and beverages income at constant 2015 prices (R million)

Month	2015	2016	2017	2018	2019	2020 1/
Jan	4 304,6	4 311,5	4 284,0	4 219,1	4 388,8	4 503,2
Feb	4 091,5	4 094,4	4 168,9	4 190,4	4 397,3	4 399,9
Mar	4 466,4	4 525,9	4 500,0	4 728,5	5 148,3	3 560,1
Apr	4 280,1	4 268,9	4 360,4	4 421,3	4 486,9	193,4
May	4 229,2	4 277,5	4 172,7	4 261,7	4 544,3	553,4
Jun	3 985,3	4 009,2	4 024,0	4 269,7	4 479,7	2 228,1
Jul	4 404,8	4 436,7	4 509,1	4 575,6	4 490,7	
Aug	4 430,0	4 320,9	4 386,7	4 609,7	4 678,1	
Sep	4 214,1	4 335,1	4 518,8	4 604,8	4 607,9	
Oct	4 470,2	4 655,2	4 495,2	4 696,3	4 623,8	
Nov	4 578,0	4 615,1	4 664,4	4 996,8	5 008,7	
Dec	5 410,4	5 424,3	5 292,4	5 727,9	5 772,1	
Total	52 864,6	53 274,7	53 376,6	55 301,8	56 626,6	

1/ Figures for the latest five months are preliminary.

Table 2 – Year-on-year percentage change in food and beverages income at constant 2015 prices

Month	2016	2017	2018	2019	2020	2020 year-to-date
Jan	0,2	-0,6	-1,5	4,0	2,6	2,6
Feb	0,1	1,8	0,5	4,9	0,1	1,3
Mar	1,3	-0,6	5,1	8,9	-30,8	-10,6
Apr	-0,3	2,1	1,4	1,5	-95,7	-31,3
May	1,1	-2,5	2,1	6,6	-87,8	-42,5
Jun	0,6	0,4	6,1	4,9	-50,3	-43,7
Jul	0,7	1,6	1,5	-1,9		
Aug	-2,5	1,5	5,1	1,5		
Sep	2,9	4,2	1,9	0,1		
Oct	4,1	-3,4	4,5	-1,5		
Nov	0,8	1,1	7,1	0,2		
Dec	0,3	-2,4	8,2	0,8		
Total	0,8	0,2	3,6	2,4		

Table 3 – Seasonally adjusted food and beverages income at constant 2015 prices

Month	R million				Month-on-month % change			
	2017	2018	2019	2020	2017	2018	2019	2020
Jan	4 478,7	4 459,1	4 650,7	4 700,6	1,5	4,8	0,1	-1,1
Feb	4 480,4	4 501,7	4 725,6	4 700,0	0,0	1,0	1,6	0,0
Mar	4 386,4	4 549,8	4 878,7	3 479,9	-2,1	1,1	3,2	-26,0
Apr	4 430,4	4 564,6	4 711,6	202,2	1,0	0,3	-3,4	-94,2
May	4 411,3	4 520,8	4 747,0	557,6	-0,4	-1,0	0,8	175,8
Jun	4 368,2	4 568,1	4 784,3	2 419,1	-1,0	1,0	0,8	333,8
Jul	4 518,5	4 662,7	4 615,9		3,4	2,1	-3,5	
Aug	4 502,6	4 652,5	4 680,4		-0,4	-0,2	1,4	
Sep	4 561,6	4 633,3	4 686,5		1,3	-0,4	0,1	
Oct	4 455,8	4 708,0	4 646,3		-2,3	1,6	-0,9	
Nov	4 524,0	4 815,0	4 753,5		1,5	2,3	2,3	
Dec	4 253,5	4 646,1	4 755,2		-6,0	-3,5	0,0	

Table 4 – Food and beverages income at constant 2015 prices by type of enterprise (R million)

		Jan-20	Feb-20 1/	Mar-20 1/	Apr-20 1/	May-20 1/	Jun-20 1/
Restaurants and coffee shops	Food sales	2 185,4	2 132,7	1 684,2	0,0	53,1	611,1
	Bar sales	242,0	234,5	137,2	0,0	0,0	9,4
	Other income	34,8	22,6	20,3	0,0	0,5	12,9
	Total	2 462,2	2 389,8	1 841,7	0,0	53,6	633,4
Takeaway and fast-food outlets	Food sales	1 455,4	1 402,1	1 191,6	0,0	217,8	1 267,2
	Bar sales	7,1	6,1	4,5	0,0	0,0	1,2
	Other income	1,2	0,9	0,8	0,0	0,1	0,5
	Total	1 463,7	1 409,1	1 196,9	0,0	217,9	1 268,9
Catering services	Food sales	441,4	470,7	410,9	170,2	254,5	264,5
	Bar sales	72,8	67,6	58,9	0,0	0,0	30,9
	Other income	63,1	62,7	51,7	23,2	27,4	30,4
	Total	577,3	601,0	521,5	193,4	281,9	325,8
Total industry	Food sales	4 082,2	4 005,5	3 286,7	170,2	525,4	2 142,8
	Bar sales	321,9	308,2	200,6	0,0	0,0	41,5
	Other income	99,1	86,2	72,8	23,2	28,0	43,8
	Total	4 503,2	4 399,9	3 560,1	193,4	553,4	2 228,1

1/ Figures are preliminary.

Table 5 – Year-on-year percentage change in food and beverages income at constant 2015 prices by type of enterprise

		Jan-20	Feb-20	Mar-20	Apr-20	May-20	Jun-20
Restaurants and coffee shops	Food sales	4,6	2,6	-33,0	-100,0	-97,4	-70,2
	Bar sales	-2,7	-5,0	-50,1	-100,0	-100,0	-95,8
	Other income	32,8	-33,1	-52,8	-100,0	-98,3	-55,4
	Total	4,1	1,3	-35,0	-100,0	-97,7	-72,6
Takeaway and fast-food outlets	Food sales	7,4	3,1	-23,5	-100,0	-85,7	-15,0
	Bar sales	20,3	1,7	-36,6	-100,0	-100,0	-84,4
	Other income	0,0	-10,0	-33,3	-100,0	-91,7	-58,3
	Total	7,5	3,1	-23,6	-100,0	-85,8	-15,4
Catering services	Food sales	-14,5	-9,3	-29,3	-67,8	-53,4	-48,9
	Bar sales	12,9	-2,2	-27,5	-100,0	-100,0	-58,7
	Other income	-23,5	-24,4	-40,2	-72,5	-66,3	-61,5
	Total	-12,9	-10,5	-30,4	-71,8	-60,0	-51,5
Total industry	Food sales	3,1	1,2	-29,4	-95,8	-87,3	-47,2
	Bar sales	0,9	-4,3	-44,8	-100,0	-100,0	-86,6
	Other income	-9,8	-26,8	-44,3	-81,8	-75,1	-59,8
	Total	2,6	0,1	-30,8	-95,7	-87,8	-50,3

Table 6 – Contribution of each type of enterprise to the year-on-year percentage change in food and beverages income at constant 2015 prices (percentage points)

		Jan-20	Feb-20	Mar-20	Apr-20	May-20	Jun-20
Restaurants and coffee shops	Food sales	2,2	1,2	-16,1	-46,6	-44,2	-32,2
	Bar sales	-0,2	-0,3	-2,7	-5,2	-4,8	-4,8
	Other income	0,2	-0,3	-0,4	-0,9	-0,6	-0,4
	Total	2,2	0,7	-19,2	-52,7	-49,6	-37,4
Takeaway and fast-food outlets	Food sales	2,3	1,0	-7,1	-31,8	-28,7	-5,0
	Bar sales	0,0	0,0	-0,1	-0,2	-0,2	-0,1
	Other income	0,0	0,0	0,0	0,0	0,0	0,0
	Total	2,3	1,0	-7,2	-32,0	-28,9	-5,1
Catering services	Food sales	-1,7	-1,1	-3,3	-8,0	-6,4	-5,7
	Bar sales	0,2	0,0	-0,4	-1,6	-1,7	-1,0
	Other income	-0,4	-0,5	-0,7	-1,4	-1,2	-1,1
	Total	-2,0	-1,6	-4,4	-11,0	-9,3	-7,7
Total industry	Food sales	2,8	1,1	-26,6	-86,4	-79,3	-42,8
	Bar sales	0,1	-0,3	-3,2	-7,0	-6,7	-6,0
	Other income	-0,2	-0,7	-1,1	-2,3	-1,9	-1,5
	Total	2,6	0,1	-30,8	-95,7	-87,8	-50,3

Table 7 – Seasonally adjusted food and beverages income at constant 2015 prices by type of enterprise (R million)

		Feb-20	Mar-20	Apr-20	May-20	Jun-20	Month-on-month % change
Restaurants and coffee shops	Food sales	2 262,7	1 606,3	0,0	55,3	688,0	1 144,1
	Bar sales	234,9	129,5	0,0	0,0	10,6	1/
	Other income	27,2	19,2	0,0	0,6	16,1	2 583,3
	Total	2 524,8	1 755,0	0,0	55,9	714,7	1 178,5
Takeaway and fast-food outlets	Food sales	1 542,2	1 228,1	0,0	215,3	1 359,7	531,5
	Bar sales	6,9	4,4	0,4	0,4	1,6	300,0
	Other income	0,9	0,8	1,0	1,0	1,0	0,0
	Total	1 549,9	1 233,3	1,4	216,7	1 362,3	528,7
Catering services	Food sales	491,4	382,2	177,5	257,7	278,1	7,9
	Bar sales	71,2	57,7	0,0	0,0	33,5	1/
	Other income	62,7	51,7	23,2	27,4	30,4	10,9
	Total	625,3	491,5	200,7	285,1	342,0	20,0
Total industry	Food sales	4 296,3	3 216,5	177,5	528,2	2 325,8	340,3
	Bar sales	313,0	191,6	0,5	0,4	45,8	11 350,0
	Other income	90,8	71,7	24,2	29,0	47,5	63,8
	Total	4 700,0	3 479,9	202,2	557,6	2 419,1	333,8

1/ Changes from zero in the preceding period cannot be calculated as a percentage.

Table 8 – Food and beverages income at current prices (R million)

Month	2015	2016	2017	2018	2019	2020 1/
Jan	4 192,0	4 453,6	4 740,8	4 958,3	5 448,1	5 822,9
Feb	3 990,0	4 254,7	4 627,6	4 939,4	5 458,9	5 718,7
Mar	4 366,4	4 729,9	5 004,0	5 588,7	6 417,3	4 641,6
Apr	4 208,7	4 484,3	4 870,1	5 323,3	5 598,6	251,5
May	4 214,1	4 559,0	4 699,0	5 153,4	5 692,0	715,4
Jun	3 994,0	4 310,5	4 548,7	5 181,4	5 638,0	2 879,6
Jul	4 433,6	4 815,4	5 155,0	5 575,4	5 660,7	
Aug	4 478,1	4 694,6	5 040,8	5 618,5	5 904,8	
Sep	4 264,2	4 714,1	5 198,1	5 627,1	5 859,3	
Oct	4 537,1	5 075,1	5 189,2	5 743,8	5 882,2	
Nov	4 665,1	5 040,5	5 439,8	6 127,3	6 427,9	
Dec	5 521,2	5 962,4	6 170,6	7 023,2	7 427,8	
Total	52 864,5	57 094,1	60 683,7	66 859,8	71 415,6	

1/ Figures for the latest five months are preliminary.

Table 9 – Year-on-year percentage change in food and beverages income at current prices

Month	2016	2017	2018	2019	2020	2020 year-to-date
Jan	6,2	6,4	4,6	9,9	6,9	6,9
Feb	6,6	8,8	6,7	10,5	4,8	5,8
Mar	8,3	5,8	11,7	14,8	-27,7	-6,6
Apr	6,5	8,6	9,3	5,2	-95,5	-28,3
May	8,2	3,1	9,7	10,5	-87,4	-40,1
Jun	7,9	5,5	13,9	8,8	-48,9	-41,5
Jul	8,6	7,1	8,2	1,5		
Aug	4,8	7,4	11,5	5,1		
Sep	10,6	10,3	8,3	4,1		
Oct	11,9	2,2	10,7	2,4		
Nov	8,0	7,9	12,6	4,9		
Dec	8,0	3,5	13,8	5,8		
Total	8,0	6,3	10,2	6,8		

Table 10 – Seasonally adjusted food and beverages income at current prices

Month	R million				Month-on-month % change			
	2017	2018	2019	2020	2017	2018	2019	2020
Jan	4 971,1	5 240,4	5 783,8	6 081,1	2,0	5,5	1,0	-1,0
Feb	4 974,8	5 307,6	5 867,1	6 132,1	0,1	1,3	1,4	0,8
Mar	4 875,7	5 402,2	6 099,9	4 536,8	-2,0	1,8	4,0	-26,0
Apr	4 970,8	5 515,6	5 892,9	281,4	2,0	2,1	-3,4	-93,8
May	4 956,8	5 459,5	5 922,0	721,8	-0,3	-1,0	0,5	156,5
Jun	4 921,3	5 520,0	6 001,1	3 133,0	-0,7	1,1	1,3	334,1
Jul	5 145,1	5 653,0	5 776,5		4,5	2,4	-3,7	
Aug	5 157,9	5 643,2	5 917,8		0,2	-0,2	2,4	
Sep	5 250,4	5 665,6	5 956,6		1,8	0,4	0,7	
Oct	5 158,6	5 761,4	5 928,0		-1,7	1,7	-0,5	
Nov	5 262,4	5 902,8	6 101,5		2,0	2,5	2,9	
Dec	4 967,2	5 723,8	6 140,7		-5,6	-3,0	0,6	

Table 11 – Food and beverages income at current prices by type of enterprise (R million)

		Jan-20	Feb-20 1/	Mar-20 1/	Apr-20 1/	May-20 1/	Jun-20 1/
Restaurants and coffee shops	Food sales	2 839,7	2 785,8	2 205,0	0,0	68,7	790,9
	Bar sales	294,2	285,6	167,2	0,0	0,0	11,4
	Other income	44,7	29,2	26,3	0,0	0,6	16,5
	Total	3 178,6	3 100,6	2 398,5	0,0	69,3	818,8
Takeaway and fast-food outlets	Food sales	1 891,1	1 831,5	1 560,0	0,0	281,7	1 640,0
	Bar sales	8,6	7,4	5,5	0,0	0,0	1,5
	Other income	1,5	1,1	1,0	0,0	0,1	0,6
	Total	1 901,2	1 840,0	1 566,5	0,0	281,8	1 642,1
Catering services	Food sales	573,5	614,8	537,9	221,6	329,2	342,3
	Bar sales	88,5	82,3	71,8	0,0	0,0	37,4
	Other income	81,1	81,0	66,9	29,9	35,1	39,0
	Total	743,1	778,1	676,6	251,5	364,3	418,7
Total industry	Food sales	5 304,3	5 232,1	4 302,9	221,6	679,6	2 773,2
	Bar sales	391,3	375,3	244,5	0,0	0,0	50,3
	Other income	127,3	111,3	94,2	29,9	35,8	56,1
	Total	5 822,9	5 718,7	4 641,6	251,5	715,4	2 879,6

1/ Figures are preliminary.

Table 12 – Year-on-year percentage change in food and beverages income at current prices by type of enterprise

		Jan-20	Feb-20	Mar-20	Apr-20	May-20	Jun-20
Restaurants and coffee shops	Food sales	9,0	7,5	-30,0	-100,0	-97,3	-69,5
	Bar sales	1,1	-1,4	-48,3	-100,0	-100,0	-95,8
	Other income	38,0	-30,1	-50,7	-100,0	-98,4	-54,4
	Total	8,5	6,1	-32,0	-100,0	-97,6	-71,8
Takeaway and fast-food outlets	Food sales	11,9	8,0	-20,1	-100,0	-85,3	-12,9
	Bar sales	24,6	5,7	-33,7	-100,0	-100,0	-83,7
	Other income	0,0	-8,3	-33,3	-100,0	-93,3	-60,0
	Total	12,0	8,0	-20,1	-100,0	-85,4	-13,3
Catering services	Food sales	-10,9	-5,1	-26,1	-66,6	-52,1	-47,7
	Bar sales	17,2	1,5	-24,7	-100,0	-100,0	-58,2
	Other income	-20,4	-21,0	-37,7	-71,5	-65,4	-60,6
	Total	-9,5	-6,4	-27,3	-70,6	-58,6	-50,3
Total industry	Food sales	7,4	6,0	-26,2	-95,6	-86,9	-46,0
	Bar sales	4,8	-0,7	-42,7	-100,0	-100,0	-86,4
	Other income	-6,3	-23,5	-41,9	-81,2	-74,4	-58,9
	Total	6,9	4,8	-27,7	-95,5	-87,4	-48,9

Table 13 – Contribution of each type of enterprise to the year-on-year percentage change in food and beverages income at current prices (percentage points)

		Jan-20	Feb-20	Mar-20	Apr-20	May-20	Jun-20
Restaurants and coffee shops	Food sales	4,3	3,6	-14,7	-46,8	-44,3	-32,0
	Bar sales	0,1	-0,1	-2,4	-4,9	-4,6	-4,6
	Other income	0,2	-0,2	-0,4	-0,9	-0,6	-0,3
	Total	4,6	3,2	-17,6	-52,6	-49,5	-36,9
Takeaway and fast-food outlets	Food sales	3,7	2,5	-6,1	-32,0	-28,7	-4,3
	Bar sales	0,0	0,0	0,0	-0,2	-0,2	-0,1
	Other income	0,0	0,0	0,0	0,0	0,0	0,0
	Total	3,7	2,5	-6,2	-32,2	-28,9	-4,5
Catering services	Food sales	-1,3	-0,6	-3,0	-7,9	-6,3	-5,5
	Bar sales	0,2	0,0	-0,4	-1,5	-1,6	-0,9
	Other income	-0,4	-0,4	-0,6	-1,3	-1,2	-1,1
	Total	-1,4	-1,0	-4,0	-10,8	-9,1	-7,5
Total industry	Food sales	6,7	5,4	-23,8	-86,6	-79,2	-41,8
	Bar sales	0,3	0,0	-2,8	-6,6	-6,3	-5,7
	Other income	-0,2	-0,6	-1,1	-2,3	-1,8	-1,4
	Total	6,9	4,8	-27,7	-95,5	-87,4	-48,9

Table 14 – Seasonally adjusted food and beverages income at current prices by type of enterprise (R million)

		Feb-20	Mar-20	Apr-20	May-20	Jun-20	Month-on-month % change
Restaurants and coffee shops	Food sales	2 968,1	2 110,3	0,0	71,4	886,8	1 142,0
	Bar sales	285,8	160,7	0,0	0,0	13,0	1/
	Other income	34,9	24,9	0,0	0,7	20,3	2 800,0
	Total	3 288,9	2 296,0	0,0	72,1	920,1	1 176,1
Takeaway and fast-food outlets	Food sales	2 017,2	1 601,7	0,0	278,4	1 754,3	530,1
	Bar sales	8,7	5,6	0,0	0,0	1,6	1/
	Other income	1,1	1,0	1,3	1,3	1,4	7,7
	Total	2 026,9	1 608,4	1,3	279,6	1 757,3	528,5
Catering services	Food sales	646,5	495,6	248,6	333,4	374,9	12,4
	Bar sales	87,1	70,8	0,0	0,0	40,0	1/
	Other income	82,7	66,1	31,5	36,6	40,6	10,9
	Total	816,4	632,5	280,1	370,0	455,6	23,1
Total industry	Food sales	5 631,9	4 207,7	248,6	683,2	3 016,0	341,5
	Bar sales	381,6	237,1	0,0	0,0	54,7	1/
	Other income	118,7	92,0	32,7	38,6	62,3	61,4
	Total	6 132,1	4 536,8	281,4	721,8	3 133,0	334,1

1/ Changes from zero in the preceding period cannot be calculated as a percentage.

Survey information

Introduction	The results presented in this publication are derived from the monthly survey of the food and beverages industry. This survey is based on a sample drawn from the 2019 business sampling frame (BSF) that contains businesses registered for value added tax (VAT).
Purpose of the survey	<p>The food and beverages survey is a monthly survey covering a sample of public and private enterprises involved in the preparation of meals and drinks for immediate consumption in South Africa. The purpose of this survey is to monitor trends in the food and beverages industry.</p> <p>The results of the food and beverage survey are used to compile estimates of the tourism satellite accounts (TSA) and the gross domestic product (GDP) and its components, which are used to develop and monitor government policy. These statistics are also used in the analysis of comparative business and industry performance.</p>
Scope of the survey	<p>This survey covers the following tax registered private and public enterprises, that are mainly engaged in providing food and beverages for immediate consumption:</p> <ul style="list-style-type: none">• restaurants and coffee shops;• takeaway and fast-food outlets; and• catering services.
Classification by industry	The 1993 edition of the <i>Standard Industrial Classification of all Economic Activities</i> (SIC), Fifth Edition, Report No. 09-90-02, was used to classify the statistical units in the survey. The SIC is based on the 1990 <i>International Standard Industrial Classification of all Economic Activities</i> (ISIC) with suitable adaptations for local conditions. Each enterprise is classified to an industry which reflects its predominant activity. Statistics in this publication are presented at 5-digit SIC level.
Collection rate	The preliminary collection rate for the survey on food and beverages for June 2020 was 81,5%. The improved collection rates for April and May 2020 were 83,8% and 82,4% respectively.
Statistical unit	The statistical unit for which information is compiled and published is an enterprise, defined as a legal unit or a combination of legal units that includes and directly controls all functions necessary to carry out its income activities. The statistical units are derived from and linked to the South African Revenue Service (SARS) administrative data.
Revised figures	Revised figures are mainly due to late submission of data to Stats SA, or respondents reporting revisions or corrections to their figures. Preliminary figures, as indicated in the relevant tables, are subject to change and when revised will not be indicated as such. Data are edited at the enterprise level.
Rounding-off of figures	Where figures have been rounded off, discrepancies may occur between sums of the component items and the totals.
Historical data	Historical food and beverages data are available on the Stats SA website. To access the data electronically, use the following link: Click to download historical data
Past publications	Past food and beverages releases are available on the Stats SA website. To access the releases electronically, use the following link: Click to download past releases
Technical notes	
Survey methodology and design	<p>The survey was conducted by mail, fax and telephone.</p> <p>A sample of 1 118 enterprises was drawn from a population of 9 851 enterprises using stratified simple random sampling in April 2019. The enterprises were first stratified at 5-digit level according to the SIC and then by size of enterprises. Large enterprises are completely enumerated. Turnover was used as the measure of size.</p>

Class limits

The enterprises are divided into four size groups according to turnover. Large enterprises are enterprises with an annual turnover of R32,5 million and more. The cut-off points which define the size groups, namely large, medium, small and very small enterprises are given in Table D.

Table D – Measure of size classes (Rand)

Enterprise size	Size group	Lower limits	Upper limits
Very small	4	574 434	12 750 000
Small	3	12 750 001	15 000 000
Medium	2	15 000 001	32 500 000
Large	1	32 500 001	

Sample weighting

For those strata not completely enumerated, the weights to produce estimates are the inverse ratio of the sampling fraction, modified to take account of non-collection in the survey. Stratum estimates are calculated and then aggregated with the completely enumerated stratum to form subgroup estimates. These procedures are in line with international best practice.

Seasonal adjustment

Seasonally adjusted estimates are generated each month using the X-12-ARIMA Seasonal Adjustment Program developed by the US Bureau of the Census. Seasonal adjustment is a means of removing the estimated effects of normal seasonal variation from the series so that the effects of other influences on the series can be recognised more clearly. Seasonal adjustment does not aim to remove irregular or non-seasonal influences which may be present in any particular month. Influences that are volatile or unsystematic can still make it difficult to interpret the movement of the series even after adjustment for seasonal variations. Therefore the month-to-month movements of seasonally adjusted estimates may not be reliable indicators of trend behaviour. The X-12-ARIMA procedure for food and beverages income is described in more detail on the Stats SA website at: [Click to download seasonal adjustment food and beverages April 2018](#)

Note: Owing to the impact of the COVID-19 lockdown, additive outlier and transitory change adjustments were applied to April 2020. Transitory (temporary) change describes a temporary effect on the level of a series after a certain point in time. The methodology will be reviewed as more data points are added to the time series.

Trend cycle

The trend is the long-term pattern or movement of a time series. The X-12-ARIMA Seasonal Adjustment Program is used for smoothing seasonally adjusted estimates to estimates of the underlying trend cycle.

Reliability of estimates

Data presented in this publication are based on information obtained from a sample and are, therefore, subject to sampling variability; that is, it may differ from the figures that would have been produced if the data had been obtained from all enterprises in the food and beverages industry in South Africa.

Relative standard error

One measure of the likely difference is given by the standard error (SE), which indicates the extent to which an estimate might have varied by chance because only a sample of enterprises was used. The relative standard error (RSE) provides an immediate indication of the percentage errors likely to have occurred due to sampling, and thus avoids the need to refer to the size of the estimate.

Table E – Estimate of total food and beverages industry income within 95% confidence limits – May 2020

	Lower limit (R million)	Income (R million)	Upper limit (R million)	Relative standard error (RSE) %
Total income	2 213,6	2 879,6	3 545,6	11,8

Non-sampling errors

Inaccuracies may occur because of imperfections in reporting by enterprises and errors made in the collection and processing of the data. Inaccuracies of this kind are referred to as non-sampling errors. Every effort is made to minimise non-sampling errors by careful design of questionnaires, testing them in pilot studies, editing reported data and implementing efficient operating procedures. Non-sampling errors occur in both sample surveys and censuses.

Constant prices	Food and beverages income at constant prices by type of enterprise and by type of income is estimated by deflating income at current prices using the relevant components of the consumer price index for restaurants.														
Year-on-year percentage change	The year-on-year percentage change in a variable for any given period is the change between that period and the corresponding period of the previous year, expressed as a percentage of the latter.														
Contribution (percentage points)	The contribution (percentage points) to the annual percentage change for any given period is calculated by multiplying the percentage change of each type of enterprise by its corresponding weight, divided by 100. The weight is the percentage contribution of each type of enterprise to total income in the corresponding period of the previous year.														
 Glossary															
Enterprise	A legal unit or a combination of legal units that includes and directly controls all functions necessary to carry out its activities.														
Industry	It is a group of enterprises engaged in the same or similar kinds of economic activity. Industries are defined in the <i>System of National Accounts (SNA)</i> in the same way as in the <i>Standard Industrial Classification of all Economic Activities (SIC)</i> , Fifth Edition, Report No. 09-90-02 of January 1993.														
Income from food sales	Refers to income from the sale of meals and non-alcoholic drinks.														
Income from bar sales	Refers to income from liquor sales.														
Other income	Includes all income not earned from bar or food sales.														
Symbols and abbreviations	<table border="0"> <tr> <td>BSF</td> <td>Business sampling frame</td> </tr> <tr> <td>GDP</td> <td>Gross domestic product</td> </tr> <tr> <td>SARS</td> <td>South African Revenue Service</td> </tr> <tr> <td>SIC</td> <td>Standard Industrial Classification of all Economic Activities</td> </tr> <tr> <td>Stats SA</td> <td>Statistics South Africa</td> </tr> <tr> <td>TSA</td> <td>Tourism satellite accounts</td> </tr> <tr> <td>VAT</td> <td>Value added tax</td> </tr> </table>	BSF	Business sampling frame	GDP	Gross domestic product	SARS	South African Revenue Service	SIC	Standard Industrial Classification of all Economic Activities	Stats SA	Statistics South Africa	TSA	Tourism satellite accounts	VAT	Value added tax
BSF	Business sampling frame														
GDP	Gross domestic product														
SARS	South African Revenue Service														
SIC	Standard Industrial Classification of all Economic Activities														
Stats SA	Statistics South Africa														
TSA	Tourism satellite accounts														
VAT	Value added tax														
Restaurants and coffee shops	Enterprises involved in the sale and provision of meals and drinks, ordered from a menu, prepared on the premises for immediate consumption and with provided seating.														
Takeaway and fast-food outlets	Enterprises involved in the sale and provision of meals and drinks, ordered from a menu, prepared on the premises for takeaway purposes in a packaged format, at a stand or in a location, with or without provided seating.														
Catering services	Enterprises involved in the sale and supply of meals and drinks prepared on the premises on a contract basis and brought to other premises chosen by the person ordering them, to be served for immediate consumption to guests or customers. Catering services also include bars, taverns, other drinking places, ice-cream parlours, etc.														
 Technical enquiries															
Kgomotso Makolomako	Telephone number: (082) 699 5979 Email: kgomotsoma@statssa.gov.za														
JP Terblanche	Telephone number: (072) 901 1222 Email: juan-pierret@statssa.gov.za														

General information

Stats SA publishes approximately 300 different statistical releases each year. It is not economically viable to produce them in more than one of South Africa's eleven official languages. Since the releases are used extensively, not only locally but also by international economic and social-scientific communities, Stats SA releases are published in English only.

Stats SA has copyright on this publication. Users may apply the information as they wish, provided that they acknowledge Stats SA as the source of the basic data wherever they process, apply, utilise, publish or distribute the data; and also that they specify that the relevant application and analysis (where applicable) result from their own processing of the data.

Stats SA products

A complete set of Stats SA publications is available at the Stats SA Library and the following libraries:

National Library of South Africa, Pretoria Division
National Library of South Africa, Cape Town Division
Natal Society Library, Pietermaritzburg
Library of Parliament, Cape Town
Bloemfontein Public Library
Johannesburg Public Library
Eastern Cape Library Services, King William's Town
Central Regional Library, Polokwane
Central Reference Library, Mbombela
Central Reference Collection, Kimberley
Central Reference Library, Mmabatho

Stats SA also provides a subscription service.

Electronic services

A large range of data is available via online services. For more detail about our electronic services, contact Stats SA's user information service at (012) 310 8600.

You can visit us on the internet at: www.statssa.gov.za

General enquiries

User information services	Telephone number: (012) 310 8600 Email address: info@statssa.gov.za
---------------------------	---

Postal address	Private Bag X44, Pretoria, 0001
----------------	---------------------------------

Produced by Stats SA