



stats sa

Department:
Statistics South Africa
REPUBLIC OF SOUTH AFRICA

Private Bag X44, Pretoria, 0001, South Africa, ISibalo House, Koch Street, Salvokop, Pretoria, 0002
www.statssa.gov.za, info@statssa.gov.za, Tel +27 12 310 8911

STATISTICAL RELEASE

P6420

Food and beverages (Preliminary)

July 2024

The results published in the next publication (August 2024) will be based on a new sample. This is an annual procedure which typically affects the level of income at both current and constant prices. To avoid breaks in time series and to minimise revisions to historical growth rates, historical income levels will be revised (i.e. they will be linked to the estimates based on the new sample).

Embargoed until:
25 September 2024
14:30

ENQUIRIES:
Joyce Essel-Mensah
Tel: (012) 310 8255

FORTHCOMING ISSUE:
August 2024

EXPECTED RELEASE DATE:
22 October 2024

Contents

Income at constant 2019 prices: results for July 2024	2
Table A – Year-on-year percentage change in food and beverages income at constant 2019 prices by type of income	2
Table B – Year-on-year percentage change in food and beverages income at constant 2019 prices by type of enterprise	2
Table C – Food and beverages income at constant 2019 prices for the latest three months by type of enterprise	2
Figure 1 – Food and beverages income at constant 2019 prices: year-on-year percentage change	3
Figure 2 – Food and beverages income at constant 2019 prices by type of enterprise, seasonally adjusted	3
Figure 3 – Food and beverages income at constant 2019 prices	4
Tables	5
Table 1 – Food and beverages income at constant 2019 prices (R million)	5
Table 2 – Year-on-year percentage change in food and beverages income at constant 2019 prices	5
Table 3 – Seasonally adjusted food and beverages income at constant 2019 prices	5
Table 4 – Food and beverages income at constant 2019 prices by type of enterprise (R million)	6
Table 5 – Year-on-year percentage change in food and beverages income at constant 2019 prices by type of enterprise	6
Table 6 – Contribution of each type of enterprise to the year-on-year percentage change in food and beverages income at constant 2019 prices (percentage points)	7
Table 7 – Seasonally adjusted food and beverages income at constant 2019 prices by type of enterprise (R million)	7
Table 8 – Food and beverages income at current prices (R million)	8
Table 9 – Year-on-year percentage change in food and beverages income at current prices	8
Table 10 – Seasonally adjusted food and beverages income at current prices	8
Table 11 – Food and beverages income at current prices by type of enterprise (R million)	9
Table 12 – Year-on-year percentage change in food and beverages income at current prices by type of enterprise	9
Table 13 – Contribution of each type of enterprise to the year-on-year percentage change in food and beverages income at current prices (percentage points)	10
Table 14 – Seasonally adjusted food and beverages income at current prices by type of enterprise (R million)	10
Explanatory notes	11
Technical notes	12
Glossary	13
Technical enquiries	14
General information	15

Income at constant 2019 prices: results for July 2024**Table A – Year-on-year percentage change in food and beverages income at constant 2019 prices by type of income**

Type of income	Feb-24	Mar-24	Apr-24	May-24	Jun-24	Jul-24
Food sales	3,2	2,6	-3,9	2,8	4,0	-1,5
Bar sales	15,2	9,2	-4,1	0,3	1,7	7,5
Other income	25,5	-1,5	1,5	-14,3	-7,9	-10,8
Total	5,2	3,3	-3,8	2,1	3,4	-0,7

Measured in real terms (constant 2019 prices), total income generated by the food and beverages industry decreased by 0,7% in July 2024 compared with July 2023. The largest negative annual growth rate was recorded for 'other' income (-10,8%). The only positive annual growth rate was recorded for bar sales (7,5%) – see Table A.

Table B – Year-on-year percentage change in food and beverages income at constant 2019 prices by type of enterprise

Type of enterprise	Feb-24	Mar-24	Apr-24	May-24	Jun-24	Jul-24
Restaurants and coffee shops	6,9	5,2	-3,5	3,5	2,6	0,7
Takeaway and fast-food outlets	2,1	3,8	-5,1	3,5	5,2	-1,4
Catering services	6,7	-6,1	-1,3	-7,1	1,3	-5,4
Total	5,2	3,3	-3,8	2,1	3,4	-0,7

In July 2024, the negative contributors to the 0,7% year-on-year decrease were catering services (-5,4% and contributing -0,6 of a percentage point) and takeaway and fast-food outlets (-1,4% and contributing -0,5 of a percentage point). Restaurants and coffee shops (0,7% and contributing 0,4 of a percentage point) was the only positive contributor – see Tables B and 6.

Table C – Food and beverages income at constant 2019 prices for the latest three months by type of enterprise

Type of enterprise	May – Jul 2023 (R million)	Weight (%)	May – Jul 2024 (R million)	% change between May – Jul 2023 and May – Jul 2024	Contribution (% points) to the total % change
Restaurants and coffee shops	9 642,2	51,6	9 859,4	2,3	1,2
Takeaway and fast-food outlets	6 725,4	36,0	6 881,1	2,3	0,8
Catering services	2 316,2	12,4	2 227,1	-3,8	-0,5
Total	18 683,8	100,0	18 967,6	1,5	1,5

Total income increased by 1,5% in the three months ended July 2024 compared with the three months ended July 2023. The positive contributors to this increase were restaurants and coffee shops (2,3% and contributing 1,2 percentage points) and takeaway and fast-food outlets (2,3% and contributing 0,8 of a percentage point). Catering services (-3,8% and contributing -0,5 of a percentage point) was the only negative contributor – see Table C.

Figure 1 – Food and beverages income at constant 2019 prices: year-on-year percentage change

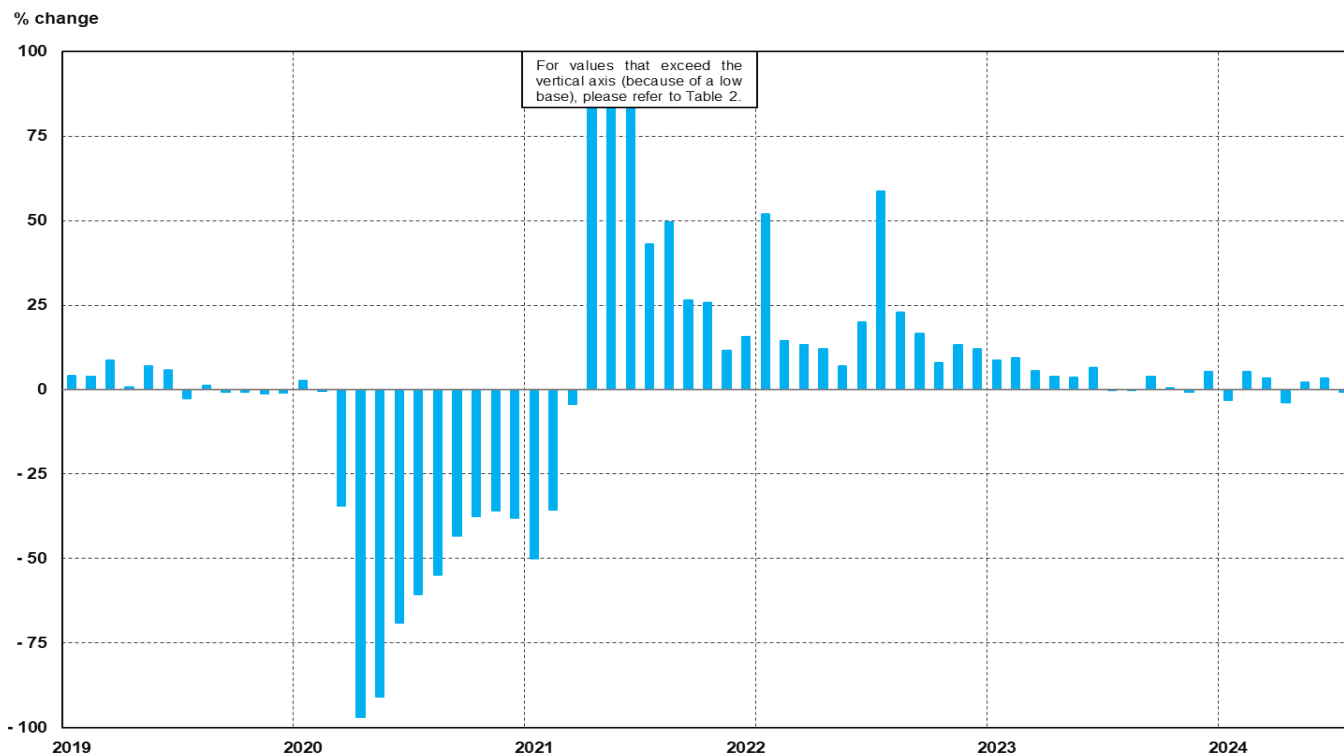


Figure 2 – Food and beverages income at constant 2019 prices by type of enterprise, seasonally adjusted

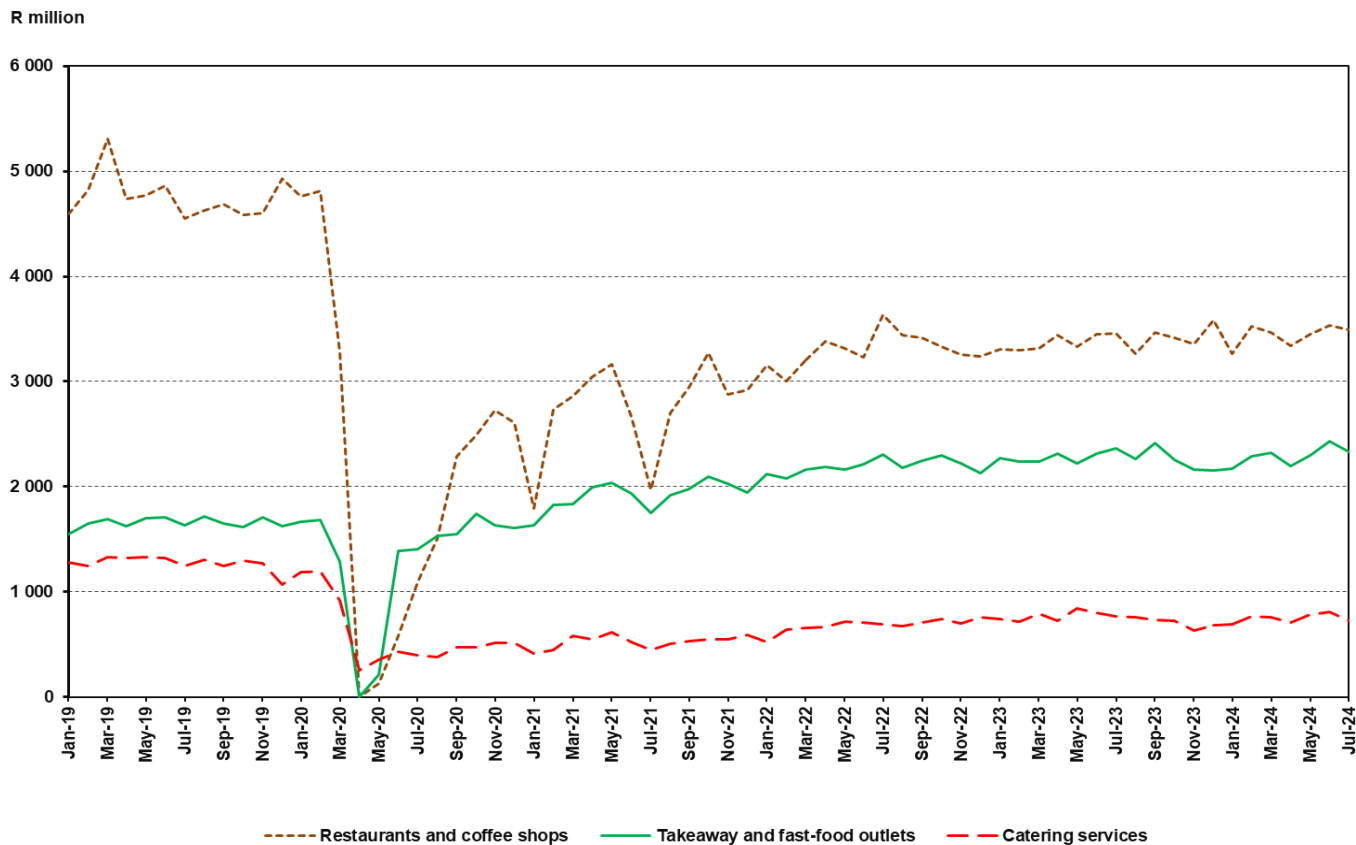
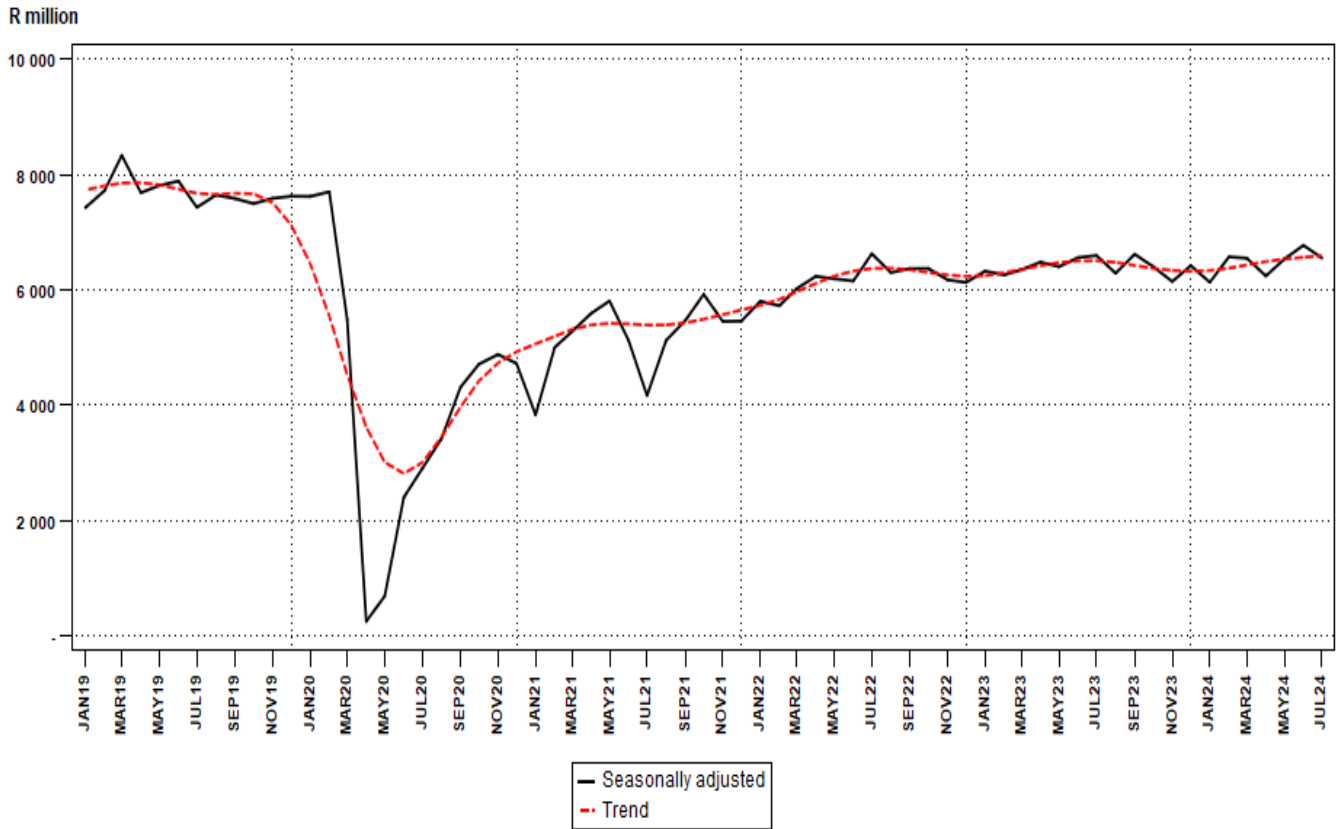


Figure 3 – Food and beverages income at constant 2019 prices



Seasonally adjusted income for the food and beverages industry decreased by 3,2% in July 2024 compared with June 2024. This followed month-on-month changes of 3,7% in June 2024 and 4,7% in May 2024 – see Tables 3 and 7.

Risenga Maluleke
Statistician-General

Tables

Table 1 – Food and beverages income at constant 2019 prices (R million)

Month	2019	2020	2021	2022	2023	2024
Jan	7 215,6	7 406,1	3 706,1	5 635,3	6 121,3	5 928,1
Feb	7 266,1	7 231,4	4 654,5	5 328,3	5 826,5	6 129,5
Mar	8 500,3	5 579,7	5 332,4	6 036,5	6 367,6	6 577,5
Apr	7 390,1	234,8	5 344,0	5 989,9	6 223,8	5 986,6
May	7 351,7	667,6	5 534,7	5 914,6	6 121,8	6 248,0
Jun	7 284,9	2 252,7	4 784,4	5 742,2	6 116,2	6 322,1
Jul	7 241,3	2 848,6	4 072,3	6 461,3	6 445,8	6 397,5
Aug	7 534,7	3 395,2	5 075,9	6 237,8	6 227,7	
Sep	7 445,7	4 227,3	5 349,0	6 234,5	6 479,0	
Oct	7 549,7	4 722,4	5 940,6	6 408,1	6 441,7	
Nov	8 060,2	5 170,4	5 766,8	6 527,1	6 486,3	
Dec	9 385,1	5 824,8	6 736,1	7 552,9	7 946,1	
Total	92 225,4	49 561,0	62 296,8	74 068,5	76 803,8	

Table 2 – Year-on-year percentage change in food and beverages income at constant 2019 prices

Month	2020	2021	2022	2023	2024	2024 year-to-date
Jan	2,6	-50,0	52,1	8,6	-3,2	-3,2
Feb	-0,5	-35,6	14,5	9,4	5,2	0,9
Mar	-34,4	-4,4	13,2	5,5	3,3	1,7
Apr	-96,8	2 176,0	12,1	3,9	-3,8	0,3
May	-90,9	729,0	6,9	3,5	2,1	0,7
Jun	-69,1	112,4	20,0	6,5	3,4	1,1
Jul	-60,7	43,0	58,7	-0,2	-0,7	0,8
Aug	-54,9	49,5	22,9	-0,2		
Sep	-43,2	26,5	16,6	3,9		
Oct	-37,4	25,8	7,9	0,5		
Nov	-35,9	11,5	13,2	-0,6		
Dec	-37,9	15,6	12,1	5,2		
Total	-46,3	25,7	18,9	3,7		

Table 3 – Seasonally adjusted food and beverages income at constant 2019 prices

Month	R million				Month-on-month % change			
	2021	2022	2023	2024	2021	2022	2023	2024
Jan	3 830,8	5 800,1	6 322,2	6 130,3	-18,9	6,3	3,2	-4,5
Feb	5 000,1	5 723,6	6 258,8	6 570,3	30,5	-1,3	-1,0	7,2
Mar	5 274,2	6 018,9	6 346,5	6 547,8	5,5	5,2	1,4	-0,3
Apr	5 588,6	6 233,0	6 479,4	6 239,2	6,0	3,6	2,1	-4,7
May	5 806,5	6 190,8	6 400,5	6 532,1	3,9	-0,7	-1,2	4,7
Jun	5 122,8	6 152,8	6 557,4	6 771,3	-11,8	-0,6	2,5	3,7
Jul	4 165,0	6 625,1	6 594,2	6 551,3	-18,7	7,7	0,6	-3,2
Aug	5 123,5	6 299,0	6 286,7		23,0	-4,9	-4,7	
Sep	5 464,8	6 367,2	6 616,9		6,7	1,1	5,3	
Oct	5 921,4	6 368,7	6 401,3		8,4	0,0	-3,3	
Nov	5 451,0	6 173,1	6 142,8		-7,9	-3,1	-4,0	
Dec	5 455,7	6 126,6	6 418,8		0,1	-0,8	4,5	

Table 4 – Food and beverages income at constant 2019 prices by type of enterprise (R million)

		Feb-24	Mar-24	Apr-24	May-24	Jun-24	Jul-24
Restaurants and coffee shops	Food sales	2 495,8	2 709,1	2 444,9	2 523,1	2 542,8	2 587,5
	Bar sales	714,9	750,0	633,3	618,3	644,3	686,1
	Other income	110,4	95,1	113,4	80,5	82,8	94,0
	Total	3 321,1	3 554,2	3 191,6	3 221,9	3 269,9	3 367,6
Takeaway and fast-food outlets	Food sales	2 040,5	2 259,8	2 100,6	2 243,6	2 265,0	2 300,5
	Bar sales	17,5	20,9	19,2	19,1	23,7	22,3
	Other income	2,2	2,6	2,5	2,1	2,5	2,3
	Total	2 060,2	2 283,3	2 122,3	2 264,8	2 291,2	2 325,1
Catering services	Food sales	589,3	592,6	537,3	621,0	604,8	555,4
	Bar sales	90,6	89,3	78,9	78,5	90,8	88,8
	Other income	68,3	58,1	56,5	61,8	65,4	60,6
	Total	748,2	740,0	672,7	761,3	761,0	704,8
Total industry	Food sales	5 125,6	5 561,5	5 082,8	5 387,7	5 412,6	5 443,4
	Bar sales	823,0	860,2	731,4	715,9	758,8	797,2
	Other income	180,9	155,8	172,4	144,4	150,7	156,9
	Total	6 129,5	6 577,5	5 986,6	6 248,0	6 322,1	6 397,5

Table 5 – Year-on-year percentage change in food and beverages income at constant 2019 prices by type of enterprise

		Feb-24	Mar-24	Apr-24	May-24	Jun-24	Jul-24
Restaurants and coffee shops	Food sales	1,4	1,8	-5,4	2,8	1,9	-2,2
	Bar sales	26,3	18,6	1,9	8,2	7,3	14,9
	Other income	35,6	8,8	13,7	-8,7	-7,3	-5,3
	Total	6,9	5,2	-3,5	3,5	2,6	0,7
Takeaway and fast-food outlets	Food sales	2,2	3,8	-5,1	3,6	5,0	-1,5
	Bar sales	-6,4	8,3	2,1	-5,0	24,7	13,8
	Other income	-12,0	-13,3	-13,8	-22,2	-7,4	-25,8
	Total	2,1	3,8	-5,1	3,5	5,2	-1,4
Catering services	Food sales	15,4	1,5	9,2	0,1	9,4	1,6
	Bar sales	-30,4	-34,5	-35,6	-35,6	-28,4	-28,8
	Other income	13,5	-14,2	-16,0	-20,4	-8,8	-17,4
	Total	6,7	-6,1	-1,3	-7,1	1,3	-5,4
Total industry	Food sales	3,2	2,6	-3,9	2,8	4,0	-1,5
	Bar sales	15,2	9,2	-4,1	0,3	1,7	7,5
	Other income	25,5	-1,5	1,5	-14,3	-7,9	-10,8
	Total	5,2	3,3	-3,8	2,1	3,4	-0,7

Table 6 – Contribution of each type of enterprise to the year-on-year percentage change in food and beverages income at constant 2019 prices (percentage points)

		Feb-24	Mar-24	Apr-24	May-24	Jun-24	Jul-24
Restaurants and coffee shops	Food sales	0,6	0,8	-2,3	1,1	0,8	-0,9
	Bar sales	2,6	1,8	0,2	0,8	0,7	1,4
	Other income	0,5	0,1	0,2	-0,1	-0,1	-0,1
	Total	3,7	2,7	-1,8	1,8	1,4	0,4
Takeaway and fast-food outlets	Food sales	0,8	1,3	-1,8	1,3	1,8	-0,5
	Bar sales	0,0	0,0	0,0	0,0	0,1	0,0
	Other income	0,0	0,0	0,0	0,0	0,0	0,0
	Total	0,7	1,3	-1,8	1,2	1,8	-0,5
Catering services	Food sales	1,4	0,1	0,7	0,0	0,8	0,1
	Bar sales	-0,7	-0,7	-0,7	-0,7	-0,6	-0,6
	Other income	0,1	-0,2	-0,2	-0,3	-0,1	-0,2
	Total	0,8	-0,8	-0,1	-1,0	0,2	-0,6
Total industry	Food sales	2,7	2,2	-3,3	2,4	3,4	-1,3
	Bar sales	1,9	1,1	-0,5	0,0	0,2	0,9
	Other income	0,6	0,0	0,0	-0,4	-0,2	-0,3
	Total	5,2	3,3	-3,8	2,1	3,4	-0,7

Table 7 – Seasonally adjusted food and beverages income at constant 2019 prices by type of enterprise (R million)

		Mar-24	Apr-24	May-24	Jun-24	Jul-24	Month-on-month % change
Restaurants and coffee shops	Food sales	2 662,2	2 521,7	2 680,6	2 745,8	2 636,6	-4,0
	Bar sales	719,2	700,3	680,8	684,7	750,4	9,6
	Other income	89,0	114,6	88,5	104,1	103,8	-0,3
	Total	3 470,5	3 336,5	3 449,9	3 534,7	3 490,9	-1,2
Takeaway and fast-food outlets	Food sales	2 296,8	2 171,6	2 277,3	2 401,7	2 309,8	-3,8
	Bar sales	19,9	20,6	20,2	25,1	20,9	-16,7
	Other income	2,6	2,5	2,1	2,5	2,3	-8,0
	Total	2 319,3	2 194,7	2 299,6	2 429,3	2 333,1	-4,0
Catering services	Food sales	607,3	566,8	635,0	640,3	571,5	-10,7
	Bar sales	88,5	81,2	82,7	98,5	93,6	-5,0
	Other income	62,3	60,0	65,0	68,5	62,2	-9,2
	Total	758,1	707,9	782,7	807,3	727,4	-9,9
Total industry	Food sales	5 566,3	5 260,1	5 592,8	5 787,9	5 518,0	-4,7
	Bar sales	827,6	802,1	783,7	808,3	865,0	7,0
	Other income	153,9	177,1	155,6	175,1	168,3	-3,9
	Total	6 547,8	6 239,2	6 532,1	6 771,3	6 551,3	-3,2

Table 8 – Food and beverages income at current prices (R million)

Month	2019	2020	2021	2022	2023	2024
Jan	7 101,7	7 594,0	3 825,4	6 152,5	7 163,7	7 426,0
Feb	7 155,2	7 446,3	4 822,3	5 845,8	6 847,2	7 686,3
Mar	8 398,5	5 758,0	5 544,0	6 646,4	7 525,4	8 257,6
Apr	7 309,1	241,3	5 601,5	6 616,6	7 366,2	7 546,8
May	7 309,1	682,1	5 822,3	6 596,9	7 341,7	7 942,5
Jun	7 274,6	2 301,7	5 047,8	6 476,9	7 378,4	8 041,4
Jul	7 241,7	2 912,1	4 320,2	7 315,4	7 800,0	8 167,1
Aug	7 542,8	3 469,2	5 413,5	7 111,6	7 600,3	
Sep	7 513,2	4 321,9	5 710,0	7 108,1	7 932,9	
Oct	7 616,8	4 817,0	6 393,3	7 359,8	7 914,7	
Nov	8 197,4	5 285,1	6 233,4	7 543,3	8 026,3	
Dec	9 565,0	5 999,6	7 296,5	8 795,1	9 841,6	
Total	92 225,1	50 828,3	66 030,2	83 568,4	92 738,4	

Table 9 – Year-on-year percentage change in food and beverages income at current prices

Month	2020	2021	2022	2023	2024	2024 year-to-date
Jan	6,9	-49,6	60,8	16,4	3,7	3,7
Feb	4,1	-35,2	21,2	17,1	12,3	7,9
Mar	-31,4	-3,7	19,9	13,2	9,7	8,5
Apr	-96,7	2 221,4	18,1	11,3	2,5	7,0
May	-90,7	753,6	13,3	11,3	8,2	7,2
Jun	-68,4	119,3	28,3	13,9	9,0	7,5
Jul	-59,8	48,4	69,3	6,6	4,7	7,1
Aug	-54,0	56,0	31,4	6,9		
Sep	-42,5	32,1	24,5	11,6		
Oct	-36,8	32,7	15,1	7,5		
Nov	-35,5	17,9	21,0	6,4		
Dec	-37,3	21,6	20,5	11,9		
Total	-44,9	29,9	26,6	11,0		

Table 10 – Seasonally adjusted food and beverages income at current prices

Month	R million				Month-on-month % change			
	2021	2022	2023	2024	2021	2022	2023	2024
Jan	4 009,0	6 406,3	7 468,3	7 739,6	-17,2	8,6	4,7	-2,7
Feb	5 169,1	6 279,2	7 371,8	8 266,5	28,9	-2,0	-1,3	6,8
Mar	5 459,8	6 591,5	7 470,1	8 158,8	5,6	5,0	1,3	-1,3
Apr	5 787,4	6 808,2	7 573,3	7 790,0	6,0	3,3	1,4	-4,5
May	6 079,9	6 872,7	7 636,9	8 260,7	5,1	0,9	0,8	6,0
Jun	5 386,7	6 912,0	7 872,0	8 573,5	-11,4	0,6	3,1	3,8
Jul	4 393,0	7 457,3	7 935,1	8 308,8	-18,4	7,9	0,8	-3,1
Aug	5 497,0	7 226,7	7 716,9		25,1	-3,1	-2,7	
Sep	5 829,2	7 253,4	8 097,4		6,0	0,4	4,9	
Oct	6 408,4	7 355,2	7 901,6		9,9	1,4	-2,4	
Nov	5 955,5	7 202,1	7 668,1		-7,1	-2,1	-3,0	
Dec	5 899,8	7 134,7	7 956,4		-0,9	-0,9	3,8	

Table 11 – Food and beverages income at current prices by type of enterprise (R million)

		Feb-24	Mar-24	Apr-24	May-24	Jun-24	Jul-24
Restaurants and coffee shops	Food sales	3 147,2	3 418,9	3 097,7	3 224,5	3 252,3	3 322,3
	Bar sales	865,8	909,8	770,7	754,9	787,3	841,8
	Other income	138,1	119,3	142,6	102,1	105,1	119,6
	Total	4 151,1	4 448,0	4 011,0	4 081,5	4 144,7	4 283,7
Takeaway and fast-food outlets	Food sales	2 573,1	2 851,9	2 661,5	2 867,3	2 896,9	2 953,9
	Bar sales	21,2	25,4	23,4	23,3	29,0	27,4
	Other income	2,7	3,3	3,1	2,7	3,2	2,9
	Total	2 597,0	2 880,6	2 688,0	2 893,3	2 929,1	2 984,2
Catering services	Food sales	743,1	747,8	680,8	793,6	773,6	713,1
	Bar sales	109,7	108,3	96,0	95,8	111,0	109,0
	Other income	85,4	72,9	71,0	78,3	83,0	77,1
	Total	938,2	929,0	847,8	967,7	967,6	899,2
Total industry	Food sales	6 463,4	7 018,6	6 440,0	6 885,4	6 922,8	6 989,3
	Bar sales	996,7	1 043,5	890,1	874,0	927,3	978,2
	Other income	226,2	195,5	216,7	183,1	191,3	199,6
	Total	7 686,3	8 257,6	7 546,8	7 942,5	8 041,4	8 167,1

Table 12 – Year-on-year percentage change in food and beverages income at current prices by type of enterprise

		Feb-24	Mar-24	Apr-24	May-24	Jun-24	Jul-24
Restaurants and coffee shops	Food sales	9,0	8,9	1,4	9,5	7,8	3,6
	Bar sales	28,6	20,5	3,9	10,6	9,8	17,9
	Other income	44,2	15,4	20,7	-3,5	-2,4	-0,3
	Total	13,6	11,3	2,4	9,4	7,9	6,0
Takeaway and fast-food outlets	Food sales	9,9	11,0	1,7	10,3	11,2	4,4
	Bar sales	-4,9	10,0	4,0	-2,9	27,8	16,6
	Other income	-10,0	-5,7	-8,8	-15,6	0,0	-21,6
	Total	9,7	11,0	1,7	10,2	11,3	4,4
Catering services	Food sales	24,1	8,5	17,1	6,7	15,8	7,6
	Bar sales	-29,1	-33,5	-34,4	-34,2	-26,8	-27,0
	Other income	20,6	-9,0	-11,0	-15,8	-4,0	-13,2
	Total	13,8	-0,3	5,0	-1,5	6,8	-0,2
Total industry	Food sales	10,9	9,7	3,0	9,5	10,1	4,3
	Bar sales	17,2	10,9	-2,3	2,6	4,0	10,3
	Other income	33,4	4,5	7,7	-9,4	-3,1	-6,1
	Total	12,3	9,7	2,5	8,2	9,0	4,7

Table 13 – Contribution of each type of enterprise to the year-on-year percentage change in food and beverages income at current prices (percentage points)

		Feb-24	Mar-24	Apr-24	May-24	Jun-24	Jul-24
Restaurants and coffee shops	Food sales	3,8	3,7	0,6	3,8	3,2	1,5
	Bar sales	2,8	2,1	0,4	1,0	0,9	1,6
	Other income	0,6	0,2	0,3	-0,1	0,0	0,0
	Total	7,2	6,0	1,3	4,8	4,1	3,1
Takeaway and fast-food outlets	Food sales	3,4	3,8	0,6	3,7	3,9	1,6
	Bar sales	0,0	0,0	0,0	0,0	0,1	0,1
	Other income	0,0	0,0	0,0	0,0	0,0	0,0
	Total	3,4	3,8	0,6	3,6	4,0	1,6
Catering services	Food sales	2,1	0,8	1,3	0,7	1,4	0,6
	Bar sales	-0,7	-0,7	-0,7	-0,7	-0,6	-0,5
	Other income	0,2	-0,1	-0,1	-0,2	0,0	-0,2
	Total	1,7	0,0	0,5	-0,2	0,8	0,0
Total industry	Food sales	9,3	8,3	2,5	8,1	8,6	3,7
	Bar sales	2,1	1,4	-0,3	0,3	0,5	1,2
	Other income	0,8	0,1	0,2	-0,3	-0,1	-0,2
	Total	12,3	9,7	2,5	8,2	9,0	4,7

Table 14 – Seasonally adjusted food and beverages income at current prices by type of enterprise (R million)

		Mar-24	Apr-24	May-24	Jun-24	Jul-24	Month-on-month % change
Restaurants and coffee shops	Food sales	3 352,4	3 161,7	3 397,5	3 514,9	3 379,4	-3,9
	Bar sales	854,0	796,9	827,7	884,9	905,2	2,3
	Other income	110,1	142,6	111,6	128,6	132,9	3,3
	Total	4 316,6	4 101,1	4 336,8	4 528,3	4 417,5	-2,4
Takeaway and fast-food outlets	Food sales	2 873,6	2 777,5	2 915,0	3 007,9	2 941,8	-2,2
	Bar sales	25,7	25,1	24,4	31,7	27,6	-12,9
	Other income	4,3	2,7	3,0	3,3	2,8	-15,2
	Total	2 903,6	2 805,3	2 942,4	3 042,9	2 972,2	-2,3
Catering services	Food sales	755,5	709,2	799,6	798,4	725,5	-9,1
	Bar sales	109,4	99,4	100,5	118,7	114,2	-3,8
	Other income	73,7	74,9	81,4	85,1	79,3	-6,8
	Total	938,6	883,6	981,4	1 002,2	919,1	-8,3
Total industry	Food sales	6 981,5	6 648,4	7 112,1	7 321,2	7 046,7	-3,7
	Bar sales	989,1	921,4	952,6	1 035,3	1 047,1	1,1
	Other income	188,1	220,2	196,0	217,0	215,0	-0,9
	Total	8 158,8	7 790,0	8 260,7	8 573,5	8 308,8	-3,1

Explanatory notes

Introduction

The results presented in this publication are derived from the monthly survey of the food and beverages industry. This survey is based on a sample drawn from the 2023 statistical business register (SBR) that contains businesses registered for value-added tax (VAT).

Purpose of the survey

The food and beverages survey is a monthly survey covering a sample of public and private enterprises involved in the preparation of meals and drinks for immediate consumption in South Africa. The purpose of this survey is to monitor trends in the food and beverages industry.

The results of the food and beverages survey are used to compile estimates of the tourism satellite accounts (TSA) and the gross domestic product (GDP) and its components, which are used to develop and monitor government policy. These statistics are also used in the analysis of comparative business and industry performance.

Scope of the survey

This survey covers the following tax registered private and public enterprises, that are mainly engaged in providing food and beverages for immediate consumption:

- restaurants and coffee shops;
- takeaway and fast-food outlets; and
- catering services.

Classification by industry

The 1993 edition of the *Standard Industrial Classification of All Economic Activities* (SIC), Fifth Edition, Report No. 09-90-02, was used to classify the statistical units in the survey. The SIC is based on the 1990 *International Standard Industrial Classification of All Economic Activities* (ISIC) with suitable adaptations for local conditions. Each enterprise is classified to an industry which reflects its predominant activity. Statistics in this publication are presented at five-digit SIC level.

Collection rate

The preliminary collection rate for the survey on food and beverages for July 2024 was 88,6%. The revised collection rate for June 2024 was 90,6%.

Statistical unit

The statistical unit for which information is compiled and published is an enterprise, defined as a legal unit or a combination of legal units that includes and directly controls all functions necessary to carry out its income activities. The statistical units are derived from and linked to the South African Revenue Service (SARS) administrative data.

Revised figures

Revised figures are mainly due to late submission of data to Stats SA, or respondents reporting revisions or corrections to their figures. The reasons for routine revisions are outlined in the following schedule. Any unscheduled revisions will be promptly indicated in relevant tables to maintain transparency and accuracy. It is important to note that seasonally adjusted figures are revised monthly.

Statistical release	Reason for revision	Period subject to revision
Jul-24	Additional information from respondents	Jun-24
Aug-24	Additional information from respondents New sample	Aug-05 – Jul-24
Sep-24	Additional information from respondents	Aug-24
Oct-24	Additional information from respondents	Sep-24
Nov-24	Additional information from respondents	Oct-24
Dec-24	Additional information from respondents	Nov-24
Jan-25	Additional information from respondents	Dec-24
Feb-25	Additional information from respondents	Jan-25
Mar-25	Additional information from respondents	Feb-25
Apr-25	Additional information from respondents	Mar-25
May-25	Additional information from respondents	Apr-25
Jun-25	Additional information from respondents	May-25
New base year in 2027/28 – periodic, approximately four- to five-year intervals		

Rounding-off of figures

Where figures have been rounded off, discrepancies may occur between sums of the component items and the totals.

Historical data Historical food and beverages data are available on the Stats SA website. To access the data electronically, use the following link: [Click to download historical data.](#)

Past publications Past food and beverages releases are available on the Stats SA website. To access the releases electronically, use the following link: [Click to download past releases.](#)

Technical notes

Survey methodology and design The survey was conducted by email and telephone.

The 2023 sample of 1 001 enterprises was drawn from a sampling frame of 5 447 enterprises using stratified simple random sampling. The enterprises were first stratified at five-digit level according to the SIC and then by size of enterprises. All large, medium and small enterprises are completely enumerated. Turnover was used as the measure of size for stratification.

Size groups The enterprises are divided into four size groups according to turnover. All large and medium and small enterprises (size groups one, two and three) are completely enumerated. Simple random sampling is applied to size group four (very small) enterprises. The total income of the large and medium enterprises (size groups one, two and three) is added to the weighted totals of size group four to reflect the total income.

Measure of size groups (Rand)

Enterprise size	Size group	Lower limit	Upper limit
Very small	4	3 151 000	20 400 000
Small	3	20 400 001	24 000 000
Medium	2	24 000 001	52 000 000
Large	1	52 000 001	

Sample weighting For those strata not completely enumerated, the weights to produce estimates are the inverse ratio of the sampling fraction, modified to take account of non-collection in the survey. Stratum estimates are calculated and then aggregated with the completely enumerated stratum to form subgroup estimates. These procedures are in line with international best practice.

Seasonal adjustment Seasonally adjusted estimates are generated each month using the X-12-ARIMA Seasonal Adjustment Program developed by the United States Census Bureau. Seasonal adjustment is a means of removing the estimated effects of normal seasonal variation from the series so that the effects of other influences on the series can be recognised more clearly. Seasonal adjustment does not aim to remove irregular or non-seasonal influences which may be present in any particular month. Influences that are volatile or unsystematic can still make it difficult to interpret the movement of the series even after adjustment for seasonal variations. Therefore, the month-to-month movements of seasonally adjusted estimates may not be reliable indicators of trend behaviour. The X-12-ARIMA procedure for food and beverages income is described in more detail on the Stats SA website at: [Click to download seasonal adjustment food and beverages April 2022.](#)

Trend cycle The trend is the long-term pattern or movement of a time series. The X-12-ARIMA Seasonal Adjustment Program is used for smoothing seasonally adjusted estimates to estimates of the underlying trend cycle.

Reliability of estimates Data presented in this publication are based on information obtained from a sample and are, therefore, subject to sampling variability; that is, they may differ from the figures that would have been produced if the data had been obtained from all enterprises in the food and beverages industry in South Africa.

Relative standard error One measure of the likely difference is given by the standard error (SE), which indicates the extent to which an estimate might have varied by chance because only a sample of enterprises was used. The relative standard error (RSE) provides an immediate indication of the percentage errors likely to have occurred due to sampling, and thus avoids the need to refer to the size of the estimate.

Estimates of total food and beverages income within 95% confidence limits – July 2024

	Lower limit (R million)	Income (R million)	Upper limit (R million)	Relative standard error (RSE) %
Total income	7 206,5	8 167,1	9 127,5	6,0

Non-sampling errors	Inaccuracies may occur because of imperfections in reporting by enterprises and errors made in the collection and processing of the data. Inaccuracies of this kind are referred to as non-sampling errors. Every effort is made to minimise non-sampling errors by careful design of questionnaires, testing them in pilot studies, editing reported data and implementing efficient operating procedures. Non-sampling errors occur in both sample surveys and censuses.																
Constant prices	Food and beverages income at constant prices by type of enterprise and by type of income is estimated by deflating income at current prices using the relevant components of the consumer price index for restaurants.																
Year-on-year percentage change	The year-on-year percentage change in a variable for any given period is the change between that period and the corresponding period of the previous year, expressed as a percentage of the latter.																
Contribution (percentage points)	The contribution (percentage points) to the annual percentage change for any given period is calculated by multiplying the percentage change of each type of enterprise by its corresponding weight, divided by 100. The weight is the percentage contribution of each type of enterprise to total income in the corresponding period of the previous year. The same result is given by $T \times [\Delta C / \Delta T]$, where T = change in the total, ΔC = change in the component (in rands), and ΔT = change in the total (in rands).																
Glossary																	
Enterprise	A legal unit or a combination of legal units that includes and directly controls all functions necessary to carry out its activities.																
Industry	It is a group of enterprises engaged in the same or similar kinds of economic activity. Industries are defined in the <i>System of National Accounts</i> (SNA) in the same way as in the <i>Standard Industrial Classification of All Economic Activities</i> (SIC), Fifth Edition, Report No. 09-90-02 of January 1993.																
Income from food sales	Refers to income from the sale of meals and non-alcoholic drinks.																
Income from bar sales	Refers to income from liquor sales.																
Other income	Includes all income not earned from bar or food sales.																
Symbols and abbreviations	<table> <tbody> <tr> <td>GDP</td> <td>Gross domestic product</td> </tr> <tr> <td>SARS</td> <td>South African Revenue Service</td> </tr> <tr> <td>SBR</td> <td>Statistical Business Register</td> </tr> <tr> <td>SIC</td> <td>Standard Industrial Classification of All Economic Activities</td> </tr> <tr> <td>Stats SA</td> <td>Statistics South Africa</td> </tr> <tr> <td>TSA</td> <td>Tourism satellite accounts</td> </tr> <tr> <td>VAT</td> <td>Value-added tax</td> </tr> <tr> <td>*</td> <td>Revised figures</td> </tr> </tbody> </table>	GDP	Gross domestic product	SARS	South African Revenue Service	SBR	Statistical Business Register	SIC	Standard Industrial Classification of All Economic Activities	Stats SA	Statistics South Africa	TSA	Tourism satellite accounts	VAT	Value-added tax	*	Revised figures
GDP	Gross domestic product																
SARS	South African Revenue Service																
SBR	Statistical Business Register																
SIC	Standard Industrial Classification of All Economic Activities																
Stats SA	Statistics South Africa																
TSA	Tourism satellite accounts																
VAT	Value-added tax																
*	Revised figures																
Restaurants and coffee shops	Enterprises involved in the sale and provision of meals and drinks, ordered from a menu, prepared on the premises for immediate consumption and with provided seating.																
Takeaway and fast-food outlets	Enterprises involved in the sale and provision of meals and drinks, ordered from a menu, prepared on the premises for takeaway purposes in a packaged format, at a stand or in a location, with or without provided seating.																

Catering services

Enterprises involved in the sale and supply of meals and drinks prepared on the premises on a contract basis and brought to other premises chosen by the person ordering them, to be served for immediate consumption to guests or customers. Catering services also include bars, taverns, other drinking places, ice-cream parlours, etc.

Technical enquiries**Kgomotso Makolomako**

Telephone number: (012) 337 6223
Email: kgomotsoma@statssa.gov.za

Joyce Essel-Mensah

Telephone number: (012) 310 8255
Email: joycee@statssa.gov.za

General information

Stats SA publishes approximately 300 different statistical releases each year. It is not economically viable to produce them in more than one of South Africa's 12 official languages. Since the releases are used extensively locally and by international economic and social-scientific communities, Stats SA releases are published in English only.

Stats SA has copyright on this publication. Users may apply the information as they wish, provided that they acknowledge Stats SA as the source of the basic data wherever they process, apply, utilise, publish or distribute the data; and also that they specify that the relevant application and analysis (where applicable) result from their own processing of the data.

Advance release calendar

A release calendar is disseminated on www.statssa.gov.za.

Stats SA products

A complete set of Stats SA publications is available at the Stats SA Library and the following libraries:

National Library of South Africa, Pretoria Division
National Library of South Africa, Cape Town Division
Natal Society Library, Pietermaritzburg
Library of Parliament, Cape Town
Bloemfontein Public Library
Johannesburg Public Library
Eastern Cape Library Services, Qonce
Central Regional Library, Polokwane
Central Reference Library, Mbombela
Central Reference Collection, Kimberley
Central Reference Library, Mmabatho

Stats SA also provides a subscription service.

Electronic services

A large range of data is available via online services. For more details about our electronic services, contact Stats SA's user information service at (012) 310 8600.

You can visit us on the internet at: www.statssa.gov.za.

General enquiries

User information services	Telephone number: (012) 310 8600 Email: info@statssa.gov.za
Orders/subscription services	Telephone number: (012) 310 8619 Email: millies@statssa.gov.za
Postal address	Private Bag X44, Pretoria, 0001

Produced by Stats SA