

STATISTICAL RELEASE
P6410

Tourist accommodation
(Preliminary)

May 2018

Embargoed until:
23 July 2018
10:00

ENQUIRIES:
Keshnee Naidoo
(012) 310 8423

FORTHCOMING ISSUE:
June 2018

EXPECTED RELEASE DATE:
20 August 2018

www.statssa.gov.za
info@statssa.gov.za
T +27 12 310 8911
F +27 12 310 8500

Private Bag X44, Pretoria, 0001, South Africa
ISibalo House, Koch Street, Salvokop, Pretoria, 0002

Contents

Results for May 2018 2

 Table A – Year-on-year percentage change in tourist accommodation statistics (income at current prices) 2

 Table B – Year-on-year percentage change in income from accommodation at current prices by type of accommodation 2

 Table C – Income from accommodation at current prices for the latest three months by type of accommodation 3

 Figure 1 – Stay unit nights sold: year-on-year percentage change 3

 Figure 2 – Income from accommodation at current prices 4

Tables 5

 Table 1 – Income from accommodation at current prices (R million) 5

 Table 2 – Year-on-year percentage change in income from accommodation at current prices 5

 Table 3 – Seasonally adjusted income from accommodation at current prices 5

 Table 4 – Tourist accommodation statistics by type of accommodation (income at current prices) 6

 Table 5 – Year-on-year percentage change in tourist accommodation statistics by type of accommodation (income at current prices) 7

 Table 6 – Contribution of each type of accommodation to the year-on-year percentage change in income from accommodation at current prices (percentage points) 7

 Table 7 – Seasonally adjusted tourist accommodation statistics by type of accommodation (income at current prices) 8

Survey information 9

Technical notes 10

Glossary 11

Technical enquiries 12

General information 13

Results for May 2018

Table A – Year-on-year percentage change in tourist accommodation statistics (income at current prices)

	Dec-17	Jan-18	Feb-18	Mar-18	Apr-18	May-18
Stay units available	0,0	0,0	0,0	0,0	0,0	0,0
Stay unit nights sold	1,1	1,5	-4,7	-4,2	-2,8	-7,0
Average income per stay unit night sold	6,6	1,4	2,6	2,3	-1,0	5,0
Income from accommodation	7,7	2,9	-2,2	-2,0	-3,7	-2,3
Total income 1/	5,9	1,7	-2,8	-0,8	-3,0	-1,2

1/ Includes restaurant and bar sales and 'other' income.

Measured in nominal terms (current prices), total income for the tourist accommodation industry decreased by 1,2% in May 2018 compared with May 2017.

Income from accommodation decreased by 2,3% year-on-year in May 2018, the result of a 7,0% decrease in the number of stay unit nights sold and a 5,0% increase in the average income per stay unit night sold.

Table B – Year-on-year percentage change in income from accommodation at current prices by type of accommodation

Type of accommodation	Dec-17	Jan-18	Feb-18	Mar-18	Apr-18	May-18
Hotels	4,5	0,8	-0,8	-4,3	-2,2	-3,6
Caravan parks and camping sites	29,6	61,3	20,3	10,9	0,0	-8,1
Guest-houses and guest-farms	13,0	-7,2	-5,3	1,3	-11,0	-22,4
Other accommodation	12,2	10,1	-5,1	2,2	-5,1	6,6
Total income from accommodation 1/	7,7	2,9	-2,2	-2,0	-3,7	-2,3

1/ Excludes restaurant and bar sales and 'other' income.

In May 2018, the types of accommodation that recorded the largest negative year-on-year growth in income from accommodation were:

- guest-houses and guest-farms (-22,4%); and
- caravan parks and camping sites (-8,1%) – see Table B.

The largest negative contributors to the 2,3% year-on-year decrease in income from accommodation in May 2018 were hotels (contributing -2,4 percentage points) and guest-houses and guest-farms (contributing -1,5 percentage points) – see Table 6.

Table C – Income from accommodation at current prices for the latest three months by type of accommodation

Type of accommodation	Mar – May 2017 (R million)	Weight	Mar – May 2018 (R million)	% change between Mar – May 2017 and Mar – May 2018	Contribution (% points) to the total % change
Hotels	3 936,4	64,5	3 802,6	-3,4	-2,2
Caravan parks and camping sites	47,8	0,8	48,4	1,3	0,0
Guest-houses and guest-farms	465,8	7,6	424,1	-9,0	-0,7
Other accommodation	1 655,4	27,1	1 667,3	0,7	0,2
Total income from accommodation 1/	6 105,4	100,0	5 942,4	-2,7	-2,7

1/ Excludes restaurant and bar sales and 'other' income.

Income from accommodation decreased by 2,7% in the three months ended May 2018 compared with the three months ended May 2017. Negative contributors to this decrease were:

- hotels (-3,4% and contributing -2,2 percentage points); and
- guest-houses and guest-farms (-9,0% and contributing -0,7 of a percentage point) – see Table C.

Figure 1 – Stay unit nights sold: year-on-year percentage change

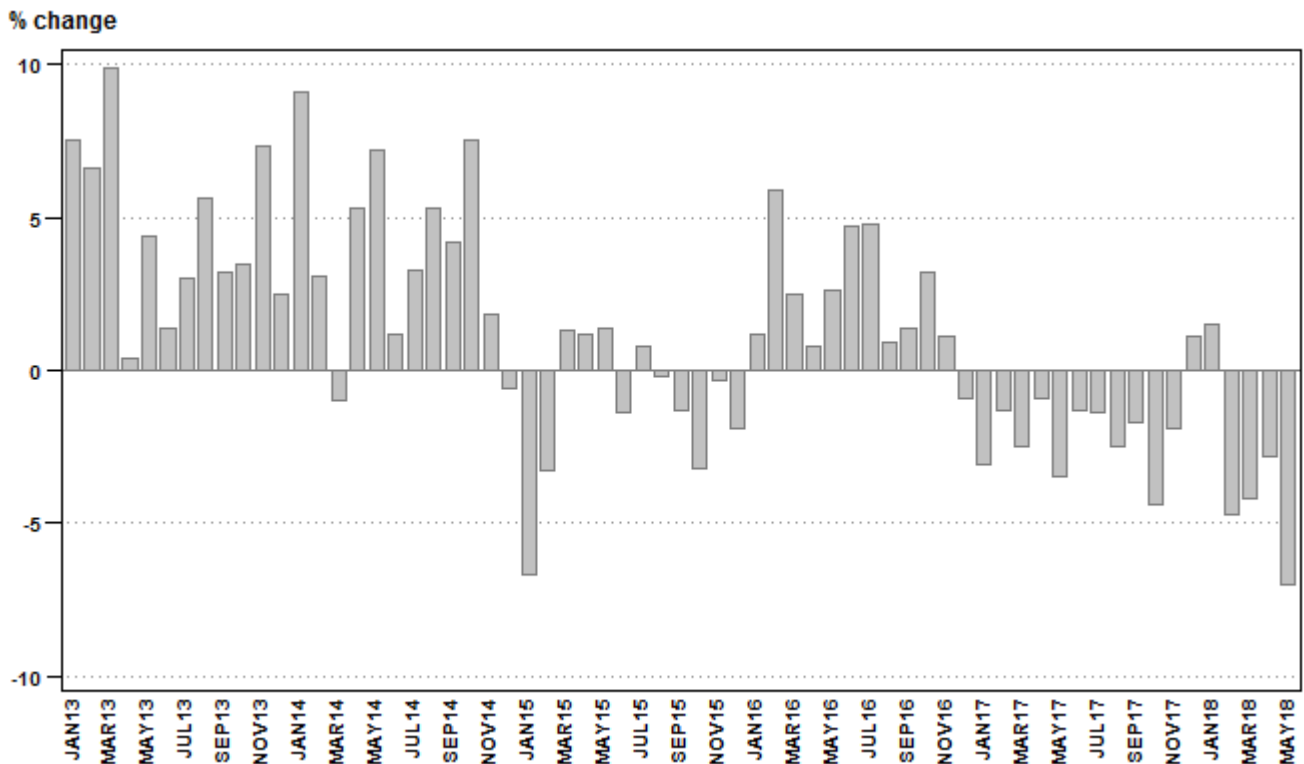
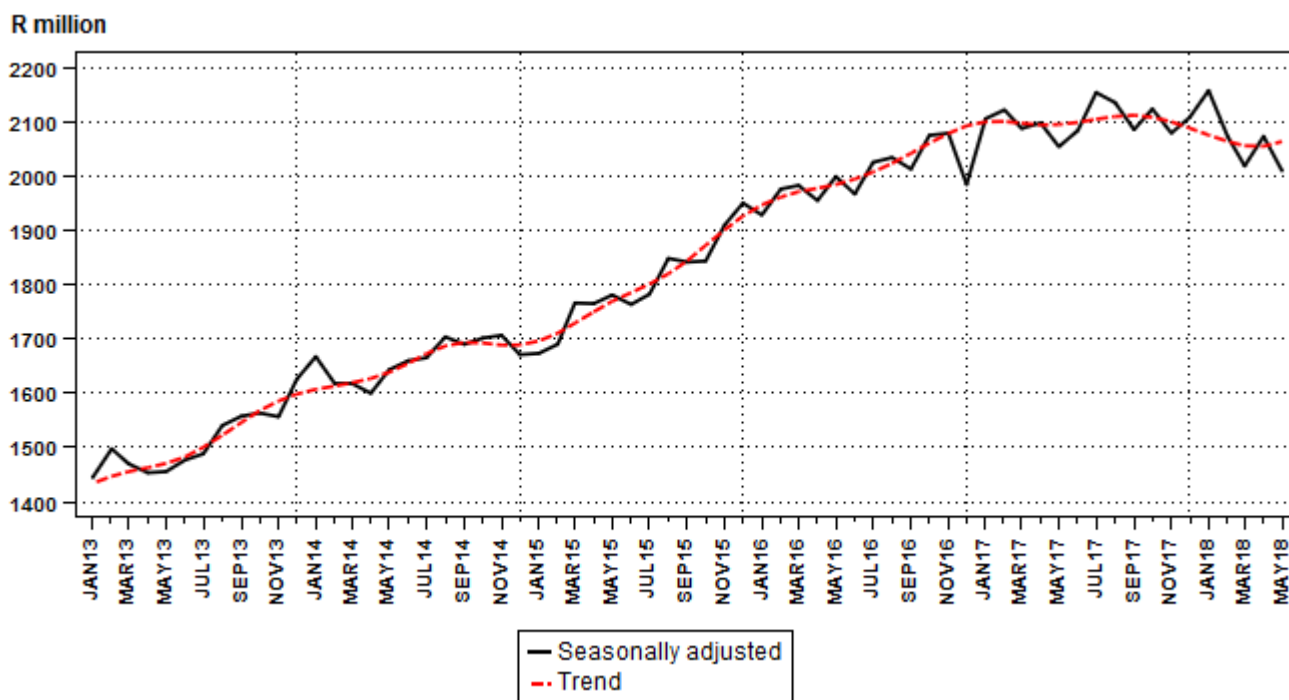


Figure 2 – Income from accommodation at current prices



Seasonally adjusted income from accommodation decreased by 3,0% month-on-month in May 2018. The largest negative month-on-month growth rates were recorded for:

- caravans parks and camping sites (-22,4%); and
- guest-houses and guest-farms (-16,9%) – see Table 7.

Risenga Maluleke
Statistician-General

Tables

Note that income from accommodation excludes restaurant and bar sales and 'other' income.

Table 1 – Income from accommodation at current prices (R million)

Month	2013	2014	2015	2016	2017	2018 1/
Jan	1 452,4	1 703,4	1 705,7	1 995,5	2 165,3	2 227,9
Feb	1 588,6	1 730,3	1 817,6	2 151,2	2 272,0	2 222,3
Mar	1 696,7	1 787,4	1 968,9	2 249,7	2 324,6	2 277,1
Apr	1 367,3	1 556,1	1 692,9	1 863,5	2 038,6	1 962,6
May	1 277,4	1 417,0	1 544,8	1 702,1	1 742,2	1 702,7
Jun	1 189,4	1 312,7	1 381,0	1 531,7	1 635,3	
Jul	1 327,7	1 488,4	1 614,0	1 848,4	1 932,4	
Aug	1 419,8	1 591,9	1 689,5	1 874,4	1 965,2	
Sep	1 497,9	1 619,4	1 774,3	1 927,6	1 993,6	
Oct	1 709,0	1 881,0	2 029,0	2 262,9	2 341,0	
Nov	1 693,9	1 837,2	2 052,2	2 263,5	2 238,1	
Dec	1 949,5	2 012,5	2 348,4	2 394,5	2 579,0	
Total	18 169,6	19 937,3	21 618,3	24 065,0	25 227,3	

1/ Figures for latest month are preliminary.

Table 2 – Year-on-year percentage change in income from accommodation at current prices

Month	2014	2015	2016	2017	2018	2018 year-to-date
Jan	17,3	0,1	17,0	8,5	2,9	2,9
Feb	8,9	5,0	18,4	5,6	-2,2	0,3
Mar	5,3	10,2	14,3	3,3	-2,0	-0,5
Apr	13,8	8,8	10,1	9,4	-3,7	-1,3
May	10,9	9,0	10,2	2,4	-2,3	-1,4
Jun	10,4	5,2	10,9	6,8		
Jul	12,1	8,4	14,5	4,5		
Aug	12,1	6,1	10,9	4,8		
Sep	8,1	9,6	8,6	3,4		
Oct	10,1	7,9	11,5	3,5		
Nov	8,5	11,7	10,3	-1,1		
Dec	3,2	16,7	2,0	7,7		
Total	9,7	8,4	11,3	4,8		

Table 3 – Seasonally adjusted income from accommodation at current prices

Month	R million				Month-on-month % change			
	2015	2016	2017	2018	2015	2016	2017	2018
Jan	1 673,3	1 928,0	2 105,2	2 156,9	0,1	-1,1	6,1	2,3
Feb	1 690,2	1 975,7	2 121,4	2 072,7	1,0	2,5	0,8	-3,9
Mar	1 766,0	1 982,4	2 087,2	2 018,3	4,5	0,3	-1,6	-2,6
Apr	1 764,9	1 954,5	2 097,3	2 072,6	-0,1	-1,4	0,5	2,7
May	1 780,7	1 998,6	2 053,7	2 009,5	0,9	2,3	-2,1	-3,0
Jun	1 763,3	1 966,6	2 083,4		-1,0	-1,6	1,4	
Jul	1 782,1	2 025,0	2 153,3		1,1	3,0	3,4	
Aug	1 848,1	2 033,6	2 134,8		3,7	0,4	-0,9	
Sep	1 841,4	2 012,5	2 085,0		-0,4	-1,0	-2,3	
Oct	1 843,2	2 074,5	2 123,0		0,1	3,1	1,8	
Nov	1 909,5	2 078,5	2 078,7		3,6	0,2	-2,1	
Dec	1 949,8	1 984,2	2 107,5		2,1	-4,5	1,4	

Table 4 – Tourist accommodation statistics by type of accommodation (income at current prices)

		Dec-17	Jan-18	Feb-18	Mar-18	Apr-18	May-18 1/
Hotels	Stay units available (000)	91,6	91,6	91,6	91,6	91,6	91,6
	Stay unit nights sold (000)	1 288,1	1 130,2	1 220,3	1 305,2	1 179,5	1 152,0
	Occupancy rate (%)	45,4	39,8	47,6	46,0	42,9	40,6
	Average income per stay unit night sold (Rand)	1 220,5	1 190,4	1 193,4	1 113,2	1 039,7	975,2
	Total income (R million)	3 657,3	3 040,8	3 068,1	3 321,4	2 915,8	2 740,7
	Income from accommodation (R million)	1 572,1	1 345,4	1 456,3	1 452,9	1 226,3	1 123,4
	Income from restaurant and bar sales (R million)	616,9	483,0	540,3	578,8	511,5	473,7
	Other income (R million)	1 468,3	1 212,4	1 071,5	1 289,7	1 178,0	1 143,6
Caravan parks and camping sites	Stay units available (000)	7,2	7,2	7,2	7,2	7,2	7,2
	Stay unit nights sold (000)	141,2	71,9	100,1	92,6	98,4	82,1
	Occupancy rate (%)	63,3	32,2	49,7	41,5	45,6	36,8
	Average income per stay unit night sold (Rand)	341,4	278,2	165,8	176,0	211,4	137,6
	Total income (R million)	52,1	21,2	17,7	18,1	23,2	12,7
	Income from accommodation (R million)	48,2	20,0	16,6	16,3	20,8	11,3
	Income from restaurant and bar sales (R million)	2,5	0,6	0,3	0,9	1,4	0,9
	Other income (R million)	1,4	0,6	0,8	0,9	1,0	0,5
Guest-houses and guest- farms	Stay units available (000)	11,6	11,6	11,6	11,6	11,6	11,6
	Stay unit nights sold (000)	182,4	164,6	163,7	171,0	144,4	107,8
	Occupancy rate (%)	50,7	45,8	50,4	47,6	41,5	30,0
	Average income per stay unit night sold (Rand)	1 361,8	1 232,7	1 212,0	1 106,4	994,5	846,9
	Total income (R million)	276,0	226,1	221,7	212,8	163,6	107,4
	Income from accommodation (R million)	248,4	202,9	198,4	189,2	143,6	91,3
	Income from restaurant and bar sales (R million)	20,8	18,2	18,6	18,7	14,9	11,7
	Other income (R million)	6,8	5,0	4,7	4,9	5,1	4,4
Other accommodation	Stay units available (000)	28,8	28,8	28,8	28,8	28,8	28,8
	Stay unit nights sold (000)	538,0	496,7	461,3	485,9	460,8	390,6
	Occupancy rate (%)	60,3	55,6	57,2	54,4	53,3	43,8
	Average income per stay unit night sold (Rand)	1 320,3	1 328,0	1 194,5	1 273,3	1 241,1	1 220,4
	Total income (R million)	842,9	766,8	654,3	730,3	677,6	570,4
	Income from accommodation (R million)	710,3	659,6	551,0	618,7	571,9	476,7
	Income from restaurant and bar sales (R million)	81,3	61,3	62,0	67,1	63,5	55,8
	Other income (R million)	51,3	45,9	41,3	44,5	42,2	37,9
Total industry	Stay units available (000)	139,2	139,2	139,2	139,2	139,2	139,2
	Stay unit nights sold (000)	2 149,7	1 863,4	1 945,4	2 054,7	1 883,1	1 732,5
	Occupancy rate (%)	49,8	43,2	49,9	47,6	45,1	40,1
	Average income per stay unit night sold (Rand)	1 199,7	1 195,6	1 142,3	1 108,2	1 042,2	982,8
	Total income (R million)	4 828,3	4 054,9	3 961,8	4 282,6	3 780,2	3 431,2
	Income from accommodation (R million)	2 579,0	2 227,9	2 222,3	2 277,1	1 962,6	1 702,7
	Income from restaurant and bar sales (R million)	721,5	563,1	621,2	665,5	591,3	542,1
	Other income (R million)	1 527,8	1 263,9	1 118,3	1 340,0	1 226,3	1 186,4

1/ Figures are preliminary.

Table 5 – Year-on-year percentage change in tourist accommodation statistics by type of accommodation (income at current prices)

		Dec-17	Jan-18	Feb-18	Mar-18	Apr-18	May-18
Hotels	Stay units available	0,0	0,0	0,0	0,0	0,0	0,0
	Stay unit nights sold	-0,7	-0,6	-3,0	-4,0	0,4	-2,9
	Average income per stay unit night sold	5,2	1,4	2,3	-0,3	-2,6	-0,7
	Total income	4,1	0,4	-2,4	-1,5	-2,2	-1,6
	Income from accommodation	4,5	0,8	-0,8	-4,3	-2,2	-3,6
	Income from restaurant and bar sales	5,2	5,2	1,3	-0,2	1,0	-2,8
	Other income	3,2	-1,8	-6,3	1,2	-3,5	1,0
Caravan parks and camping sites	Stay units available	0,0	0,0	0,0	0,0	0,0	0,0
	Stay unit nights sold	5,8	25,9	5,0	7,3	8,7	-2,3
	Average income per stay unit night sold	22,4	28,1	14,5	3,3	-8,0	-6,0
	Total income	28,6	52,5	13,5	5,8	-4,9	-8,0
	Income from accommodation	29,6	61,3	20,3	10,9	0,0	-8,1
	Income from restaurant and bar sales	31,6	20,0	-57,1	-10,0	-30,0	50,0
	Other income	0,0	-40,0	-27,3	-35,7	-37,5	-44,4
Guest-houses and guest-farms	Stay units available	0,0	0,0	0,0	0,0	0,0	0,0
	Stay unit nights sold	-2,4	-8,9	-11,4	-5,4	-7,9	-29,5
	Average income per stay unit night sold	15,7	1,8	6,9	7,0	-3,4	10,0
	Total income	11,7	-6,7	-4,6	2,1	-10,8	-19,9
	Income from accommodation	13,0	-7,2	-5,3	1,3	-11,0	-22,4
	Income from restaurant and bar sales	-3,7	-5,7	0,5	7,5	-14,4	-3,3
	Other income	17,2	11,1	9,3	14,0	10,9	2,3
Other accommodation	Stay units available	0,0	0,0	0,0	0,0	0,0	0,0
	Stay unit nights sold	5,6	7,8	-8,3	-6,3	-10,4	-11,0
	Average income per stay unit night sold	6,2	2,1	3,5	9,0	5,9	19,8
	Total income	11,2	9,7	-4,2	1,6	-4,4	5,6
	Income from accommodation	12,2	10,1	-5,1	2,2	-5,1	6,6
	Income from restaurant and bar sales	4,6	5,5	2,3	0,6	-1,2	-0,4
	Other income	8,0	9,0	-0,5	-5,1	1,0	1,6
Total industry	Stay units available	0,0	0,0	0,0	0,0	0,0	0,0
	Stay unit nights sold	1,1	1,5	-4,7	-4,2	-2,8	-7,0
	Average income per stay unit night sold	6,6	1,4	2,6	2,3	-1,0	5,0
	Total income	5,9	1,7	-2,8	-0,8	-3,0	-1,2
	Income from accommodation	7,7	2,9	-2,2	-2,0	-3,7	-2,3
	Income from restaurant and bar sales	4,9	4,8	1,3	0,1	0,2	-2,5
	Other income	3,4	-1,5	-6,0	1,0	-3,4	1,0

Table 6 – Contribution of each type of accommodation to the year-on-year percentage change in income from accommodation at current prices (percentage points)

Type of accommodation	Dec-17	Jan-18	Feb-18	Mar-18	Apr-18	May-18
Hotels	2,8	0,5	-0,5	-2,8	-1,3	-2,4
Caravan parks and camping sites	0,5	0,4	0,1	0,1	0,0	-0,1
Guest-houses and guest-farms	1,2	-0,7	-0,5	0,1	-0,9	-1,5
Other accommodation	3,2	2,8	-1,3	0,6	-1,5	1,7
Total income from accommodation 1/	7,7	2,9	-2,2	-2,0	-3,7	-2,3

1/ Excludes restaurant and bar sales and 'other' income.

Table 7 – Seasonally adjusted tourist accommodation statistics by type of accommodation (income at current prices)

		Jan-18	Feb-18	Mar-18	Apr-18	May-18	Month-on-month % change
Hotels	Stay unit nights sold (000)	1 231,8	1 214,5	1 218,6	1 225,9	1 206,7	-1,6
	Occupancy rate (%)	44,1	43,6	43,8	44,2	43,5	
	Average income per stay unit night sold (Rand)	1 092,8	1 083,2	1 055,9	1 066,3	1 056,9	-0,9
	Total income (R million)	3 111,4	3 023,4	3 046,8	3 028,2	2 995,6	-1,1
	Income from accommodation (R million)	1 342,3	1 311,1	1 292,0	1 308,4	1 286,9	-1,6
	Income from restaurant and bar sales (R million)	547,8	537,7	536,0	534,1	512,3	-4,1
	Other income (R million)	1 221,3	1 174,6	1 218,9	1 185,7	1 196,5	0,9
Caravan parks and camping sites	Stay unit nights sold (000)	92,8	102,4	92,4	98,4	92,7	-5,8
	Occupancy rate (%)	42,1	47,0	41,1	44,4	41,2	
	Average income per stay unit night sold (Rand)	237,3	191,6	184,5	204,7	179,0	-12,6
	Total income (R million)	21,9	22,0	16,5	23,7	18,4	-22,4
	Income from accommodation (R million)	20,1	20,4	14,6	21,4	16,6	-22,4
	Income from restaurant and bar sales (R million)	1,1	0,7	1,1	1,3	1,2	-7,7
	Other income (R million)	0,7	0,9	0,8	0,9	0,6	-33,3
Guest-houses and guest-farms	Stay unit nights sold (000)	160,3	157,4	149,4	162,2	128,0	-21,1
	Occupancy rate (%)	44,9	44,3	43,5	45,2	35,7	
	Average income per stay unit night sold (Rand)	1 052,4	1 049,1	1 017,8	1 004,4	1 015,2	1,1
	Total income (R million)	195,5	184,7	180,3	176,9	149,0	-15,8
	Income from accommodation (R million)	174,0	163,7	158,7	155,4	129,2	-16,9
	Income from restaurant and bar sales (R million)	16,6	16,7	17,1	16,3	14,5	-11,0
	Other income (R million)	4,8	4,2	4,5	5,2	5,3	1,9
Other accommodation	Stay unit nights sold (000)	506,3	458,5	442,4	470,5	438,5	-6,8
	Occupancy rate (%)	57,6	52,9	50,6	53,8	49,8	
	Average income per stay unit night sold (Rand)	1 241,4	1 208,8	1 255,3	1 249,3	1 299,1	4,0
	Total income (R million)	730,6	683,5	654,1	697,6	686,9	-1,5
	Income from accommodation (R million)	620,4	577,5	553,0	587,4	576,8	-1,8
	Income from restaurant and bar sales (R million)	66,1	64,4	61,0	67,2	66,2	-1,5
	Other income (R million)	44,1	41,6	40,2	42,9	43,9	2,3
Total industry	Stay unit nights sold (000)	1 991,0	1 932,8	1 902,8	1 957,1	1 865,9	-4,7
	Occupancy rate (%)	46,5	45,9	44,6	46,4	44,3	
	Average income per stay unit night sold (Rand)	1 089,4	1 063,0	1 063,7	1 059,3	1 076,5	1,6
	Total income (R million)	4 059,4	3 913,6	3 897,7	3 926,4	3 849,9	-1,9
	Income from accommodation (R million)	2 156,9	2 072,7	2 018,3	2 072,6	2 009,5	-3,0
	Income from restaurant and bar sales (R million)	631,5	619,5	615,1	618,9	594,1	-4,0
	Other income (R million)	1 270,9	1 221,4	1 264,4	1 234,8	1 246,4	0,9

Survey information

Introduction	1	<p>The results presented in this publication are derived from the monthly survey of the tourist accommodation industry. This survey is based on a sample drawn from the 2017 business sampling frame (BSF) that contains businesses registered for value added tax (VAT).</p> <p>In order to improve timeliness, some information for the latest month had to be estimated due to late response. These estimates will be revised in future statistical releases as soon as information becomes available.</p>
Purpose of the survey	3	<p>The Tourist accommodation survey is a monthly survey covering a sample of public and private enterprises involved in the short-stay accommodation industry in South Africa.</p> <p>The results of the survey are used to compile estimates of the tourism satellite accounts (TSA) and the gross domestic product (GDP) and its components, which are used to develop and monitor government policy. These statistics are also used in the analysis of comparative business and industry performance.</p>
Scope of the survey	4	<p>This survey covers the following tax registered private and public enterprises that are mainly engaged in providing short-stay commercial accommodation:</p> <ul style="list-style-type: none"> • Hotels, motels, botels and inns; • Caravan parks and camping sites; • Guest-houses and guest-farms; and • 'Other' accommodation.
Collection rate	5	<p>The preliminary collection rate for the tourist accommodation survey for May 2018 was 89,2%. The improved collection rate for April 2018 was 93,2%.</p>
Classification by industry	6	<p>The 1993 edition of the <i>Standard Industrial Classification of all Economic Activities</i> (SIC), Fifth Edition, Report No. 09-90-02 was used to classify the statistical units in the survey. The SIC is based on the 1990 <i>International Standard Industrial Classification of all Economic Activities</i> (ISIC) with suitable adaptations for local conditions. Each enterprise is classified to an industry, which reflects its predominant activity. Statistics in this publication are presented at 5-digit SIC level.</p>
Statistical unit	7	<p>The statistical units for the collection of the information are enterprises and establishments.</p>
Revised figures	8	<p>Revised figures are mainly due to late submission of data to Stats SA, or respondents reporting revisions or corrections to their figures. Preliminary figures, as indicated in the relevant tables, are subject to change and when revised will not be indicated as such. Data are edited at the enterprise level.</p>
Rounding-off of figures	9	<p>Where figures have been rounded off, discrepancies may occur between sums of the component items and the totals.</p>
Historical data	10	<p>Historical tourist accommodation data are available on the Stats SA website. To access the data electronically, use the following link: Click to download historical data</p>
Past publications	11	<p>Past tourist accommodation releases are available on the Stats SA website. To access the releases electronically, use the following link: Click to download past releases</p>

Comparability with discontinued Hotels' Trading Statistics **12** The information in this statistical release and the discontinued monthly Hotels' Trading Statistics statistical release is not strictly comparable. The Hotels' Trading Statistics survey was conducted using a list of all hotels graded by the then South African Tourism Board (Satour) when the grading of hotels was still compulsory by law. This survey is conducted from a sample drawn from a business register of all enterprises registered for value added tax (VAT) and income tax.

The higher levels from this survey can be mainly attributed to the following:

- The coverage of all types of tourist accommodation enterprises including hotels; and
- The improved coverage of the business register, especially of small and micro enterprises.

Technical notes

Survey methodology and design **1** The survey was conducted by mail, email, fax and telephone.
 The 2017 sample of 1 071 enterprises was drawn from a population of 4 164 enterprises using stratified simple random sampling. The enterprises were first stratified at 5-digit level according to the SIC and then by size of enterprises. All large enterprises are completely enumerated. Turnover was used as the measure of size for stratification.

Size groups **2** The enterprises are divided into four size groups according to turnover. All large and medium enterprises (size group one and two) are completely enumerated. Simple random sampling is applied to size groups three and four (small and very small) enterprises. The total income of the large and medium enterprises (size group one and two) is added to the weighted totals of size groups three and four to reflect the total income.

Measure of size classes (Rand)

Enterprise size	Size group	Lower limits	Upper limits
Very small	4	423 436	5 100 000
Small	3	5 100 001	6 000 000
Medium	2	6 000 001	13 000 000
Large	1	13 000 001	

Sample weighting **3** For those strata not completely enumerated, the weights to produce estimates are the inverse ratio of the sampling fraction, modified to take account of non-response in the survey. Stratum estimates are calculated and then aggregated with the completely enumerated stratum to form subgroup estimates. These procedures are in line with international best practice.

Reliability of estimates **4** Data presented in this publication are based on information obtained from a sample and are, therefore, subject to sampling variability; that is, they may differ from the figures that would have been produced if the data had been obtained from all enterprises in the tourist accommodation industry in South Africa.

- Relative standard error** 5 One measure of the likely difference is given by the standard error (SE), which indicates the extent to which an estimate might have varied by chance because only a sample of enterprises was used. The relative standard error (RSE) provides an immediate indication of the percentage errors likely to have occurred due to sampling, and thus avoids the need to refer to the size of the estimate.

Table D – Estimates of total industry income by type of enterprise within 95% confidence limits – May 2018

	Lower limit (R million)	Estimate (R million)	Upper limit (R million)	Relative standard error (RSE) %
Total income	3 093,0	3 431,2	3 769,0	5,0

- Non-sampling errors** 6 Inaccuracies may occur because of imperfections in reporting by enterprises and errors made in the collection and processing of the data. Inaccuracies of this kind are referred to as non-sampling errors. Every effort is made to minimise non-sampling errors by careful design of questionnaires, testing them in pilot studies, editing reported data and implementing efficient operating procedures. Non-sampling errors occur in both sample surveys and censuses.

- Year-on-year percentage change** 7 The year-on-year percentage change in a variable for any given period is the change between that period and the corresponding period of the previous year, expressed as a percentage of the latter.

- Contribution (percentage points)** 8 The contribution (percentage points) to the year-on-year percentage change for any given period is calculated by multiplying the percentage change of each type of accommodation by its corresponding weight, divided by 100. The weight is the percentage contribution of each type accommodation to the total accommodation income in the corresponding period of the previous year.

- Seasonal adjustment** 9 Seasonally adjusted estimates are generated each month using the X-12-ARIMA Seasonal Adjustment Program developed by the US Bureau of the Census. Seasonal adjustment is a means of removing the estimated effects of normal seasonal variation from the series so that the effects of other influences on the series can be recognised more clearly. Seasonal adjustment does not aim to remove irregular or non-seasonal influences which may be present in any particular month. Influences that are volatile or unsystematic can still make it difficult to interpret the movement of the series even after adjustment for seasonal variations. Therefore the month-to-month movements of seasonally adjusted estimates may not be reliable indicators of trend behaviour. The X-12-ARIMA procedure for tourist accommodation is described in more detail on the Stats SA website at: [Click to download seasonal adjustment tourist accommodation April 2018](#)

- Trend cycle** The trend is the long-term pattern or movement of a time series. The X-12-ARIMA Seasonal Adjustment Program is used for smoothing seasonally adjusted estimates to estimates of the underlying trend cycle.

Glossary

- Average income per stay unit night sold** Average rate per stay unit (i.e. rate per room in a hotel or powered site in a caravan park) is calculated by dividing the total income from accommodation by the number of stay unit nights sold in the survey period.

- Enterprise** An enterprise is a legal unit or combination of legal units that includes and directly controls all functions to carry out its activities.

- Establishment** An enterprise or part of an enterprise that is situated in a single location and in which only a single (non-ancillary) productive activity is carried out or in which the principal productive activity accounts for most of the value added.

- Income from accommodation** Income from amounts charged for stay units. 'Other' income is excluded (e.g. income from meals).

Income from restaurant and bar sales	Income from meals, banqueting and beverages and tobacco sales.																						
Other income	Income from casino gambling, laundry and telephone services, rentals and fees received for transport services, offices, shops, garages, etc.																						
Occupancy rate	The number of stay unit nights sold, divided by the product of the number of stay units available and the number of days in the survey period, expressed as a percentage.																						
Other accommodation	Includes lodges, bed-and-breakfast establishments, self-catering establishments and 'other' establishments not elsewhere classified.																						
Stay unit	The unit of accommodation available to be charged out to guests, for example, a powered site in a caravan park or a room in a hotel.																						
Stay unit nights sold	The total number of stay units occupied on each night during the survey period.																						
Symbols and abbreviations	<table> <tr> <td>BR</td> <td>Business register</td> </tr> <tr> <td>BSF</td> <td>Business sampling frame</td> </tr> <tr> <td>GDP</td> <td>Gross domestic product</td> </tr> <tr> <td>DTI</td> <td>Department of Trade and Industry</td> </tr> <tr> <td>RSE</td> <td>Relative standard error</td> </tr> <tr> <td>SARS</td> <td>South African Revenue Service</td> </tr> <tr> <td>SE</td> <td>Standard error</td> </tr> <tr> <td>SIC</td> <td>Standard Industrial Classification of all Economic Activities</td> </tr> <tr> <td>Stats SA</td> <td>Statistics South Africa</td> </tr> <tr> <td>VAT</td> <td>Value added tax</td> </tr> <tr> <td>TSA</td> <td>Tourism satellite accounts</td> </tr> </table>	BR	Business register	BSF	Business sampling frame	GDP	Gross domestic product	DTI	Department of Trade and Industry	RSE	Relative standard error	SARS	South African Revenue Service	SE	Standard error	SIC	Standard Industrial Classification of all Economic Activities	Stats SA	Statistics South Africa	VAT	Value added tax	TSA	Tourism satellite accounts
BR	Business register																						
BSF	Business sampling frame																						
GDP	Gross domestic product																						
DTI	Department of Trade and Industry																						
RSE	Relative standard error																						
SARS	South African Revenue Service																						
SE	Standard error																						
SIC	Standard Industrial Classification of all Economic Activities																						
Stats SA	Statistics South Africa																						
VAT	Value added tax																						
TSA	Tourism satellite accounts																						
Total income	Includes income from accommodation, income from restaurant and bar sales and 'other' income.																						
Tourist	A visitor who spends at least one night in the place visited.																						
Technical enquiries																							
Vhonani Kwindu	Telephone number: (012) 310 2113 Email: vhonanik@statssa.gov.za																						
Keshnee Naidoo	Telephone number: (012) 310 8423 Email: keshneen@statssa.gov.za																						

General information

Stats SA publishes approximately 300 different statistical releases each year. It is not economically viable to produce them in more than one of South Africa's eleven official languages. Since the releases are used extensively, not only locally but also by international economic and social-scientific communities, Stats SA releases are published in English only.

Stats SA has copyright on this publication. Users may apply the information as they wish, provided that they acknowledge Stats SA as the source of the basic data wherever they process, apply, utilise, publish or distribute the data; and also that they specify that the relevant application and analysis (where applicable) result from their own processing of the data.

Stats SA products

A complete set of Stats SA publications is available at the Stats SA Library and the following libraries:

National Library of South Africa, Pretoria Division
National Library of South Africa, Cape Town Division
Natal Society Library, Pietermaritzburg
Library of Parliament, Cape Town
Bloemfontein Public Library
Johannesburg Public Library
Eastern Cape Library Services, King William's Town
Central Regional Library, Polokwane
Central Reference Library, Mbombela
Central Reference Collection, Kimberley
Central Reference Library, Mmabatho

Stats SA also provides a subscription service.

Electronic services

A large range of data are available via online services. For more details about our electronic data services, contact Stats SA's user information service at (012) 310 8600.

You can visit us on the internet at: www.statssa.gov.za

General enquiries

User information services	Telephone number: (012) 310 8600 Email address: info@statssa.gov.za
Postal address	Private Bag X44, Pretoria, 0001

Produced by Stats SA