

# Retail trade in motor vehicles and accessories

October 2002

Co-operation between Statistics South Africa (Stats SA), the citizens of the country, the private sector and government institutions is essential for a successful statistical system. Without continued co-operation and goodwill, the timely release of relevant and reliable official statistics will not be possible.

**Embargo: 8:00**  
**Date: 18 December 2002**

Stats SA publishes approximately three hundred different releases each year. It is not economically viable to produce them in more than one of South Africa's eleven official languages. Since the releases are used extensively, not only locally, but also by international economic and social-scientific communities, Stats SA releases are published in English only.

## Key figures regarding motor trading income for the month ended October 2002

Actual estimates				
	2002 October	% change between October 2001 and October 2002	% change between August 2001 to October 2001 and August 2002 to October 2002	% change between January 2001 to October 2001 and January 2002 to October 2002
<b>R million</b>				
Income from the sales of new vehicles	3 933	19,3	30,5	19,6
Income from the sales of used vehicles	2 671	18,8	26,6	30,2
Workshop income	1 114	16,0	19,7	13,9
Other trading income	2 263	19,8	18,0	12,4
<b>Total motor trading income</b>	<b>9 981</b>	<b>18,9</b>	<b>25,3</b>	<b>19,8</b>

Seasonally adjusted estimates			
	2002 October	% change between September 2002 and October 2002	% change between May 2002 to July 2002 and August 2002 to October 2002
<b>R million</b>			
Income from the sales of new vehicles	4 008	-2,9	7,6
Income from the sales of used vehicles	2 497	-0,6	0,2
Workshop income	1 077	0,5	6,9
Other trading income	2 215	6,1	6,6
<b>Total motor trading income</b>	<b>9 797</b>	<b>0,0</b>	<b>5,3</b>

## Key findings regarding motor trading income for the month ended October 2002

### Total motor trading income increases

*The seasonally adjusted total motor trading income of retailers in motor vehicles and accessories for the three months ended October 2002 increased by 5,3% compared with the previous three months. Furthermore, the seasonally adjusted total motor trading income for October 2002 remained unchanged compared with September 2002.*

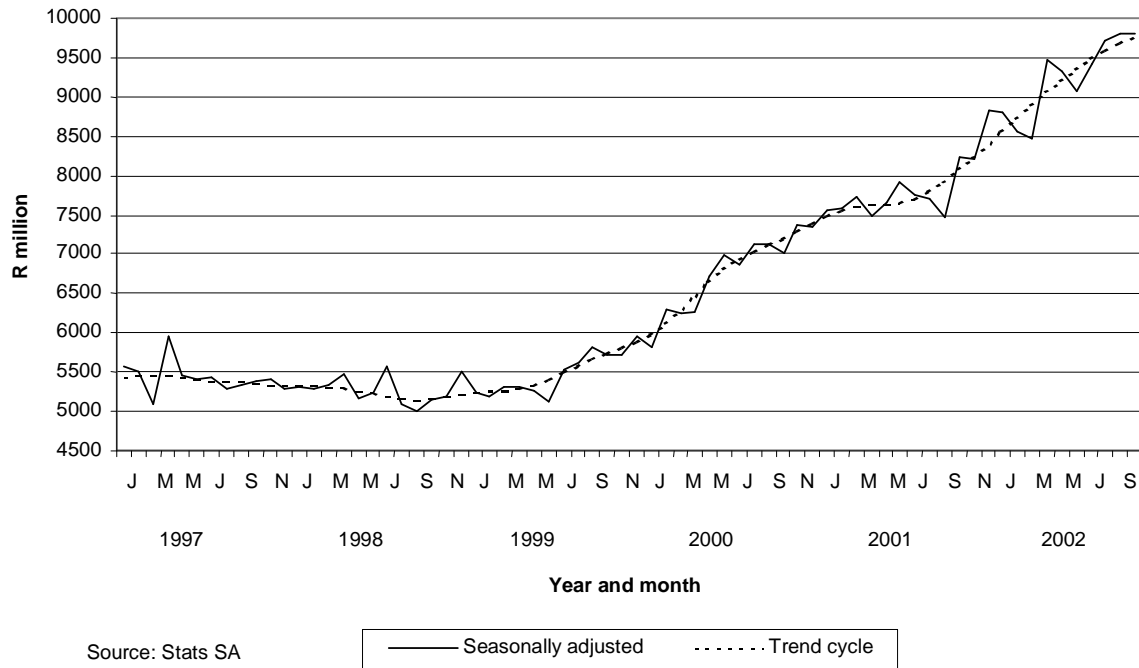
The increase of 5,3% in the seasonally adjusted total motor trading income for the three months ended October 2002 compared with the previous three months was due to increases in the seasonally adjusted income from the sales of new vehicles (+7,6%), workshop income (+6,9%), income from 'other' trading income (+6,6%) and income from the sales of used vehicles (+0,2%).

## Key findings regarding motor trading income for the first ten months of 2002

### Total motor trading income increases

*The total motor trading income of retailers in motor vehicles and accessories for the first ten months of 2002 increased by 19,8% compared with the first ten months of 2001.*

This increase of 19,8% was due to increases in the income from the sales of used vehicles (+30,2%), the income from the sales of new vehicles (+19,6%), workshop income (+13,9%) and 'other' trading income (+12,4%).



**Figure 1 - Total motor trading income, excluding Value Added Tax**

### Key figures regarding the total number of vehicles sold for the month ended October 2002

Actual estimates	2002 October	% change between September 2002 and October 2002	% change between October 2001 and October 2002	% change between August 2001 to October 2001 and August 2002 to October 2002	% change between January 2001 to October 2001 and January 2002 to October 2002
Number of new vehicles sold	27 688	-1,6	-3,9	1,5	-3,2
Number of used vehicles sold	29 505	2,9	-2,7	2,1	3,2
<b>Total number of new and used vehicles sold</b>	<b>57 193</b>	<b>0,7</b>	<b>-3,3</b>	<b>1,8</b>	<b>0,0</b>

### Key findings regarding the total number of vehicles sold for the month ended October 2002

#### Total number of vehicles sold increases

*The total number of new and used vehicles sold during the three months ended October 2002 increased by 1,8% compared with the three months ended October 2001. Furthermore, the total number of new and used vehicles sold during October 2002 increased by 0,7% compared with September 2002.*

The increase of 1,8% in the total number of new and used vehicles sold during the three months ended October 2002 compared with three months ended October 2001 can be attributed to increases of 2,1% and 1,5% in the number of used vehicles sold and in the number of new vehicles sold, respectively.

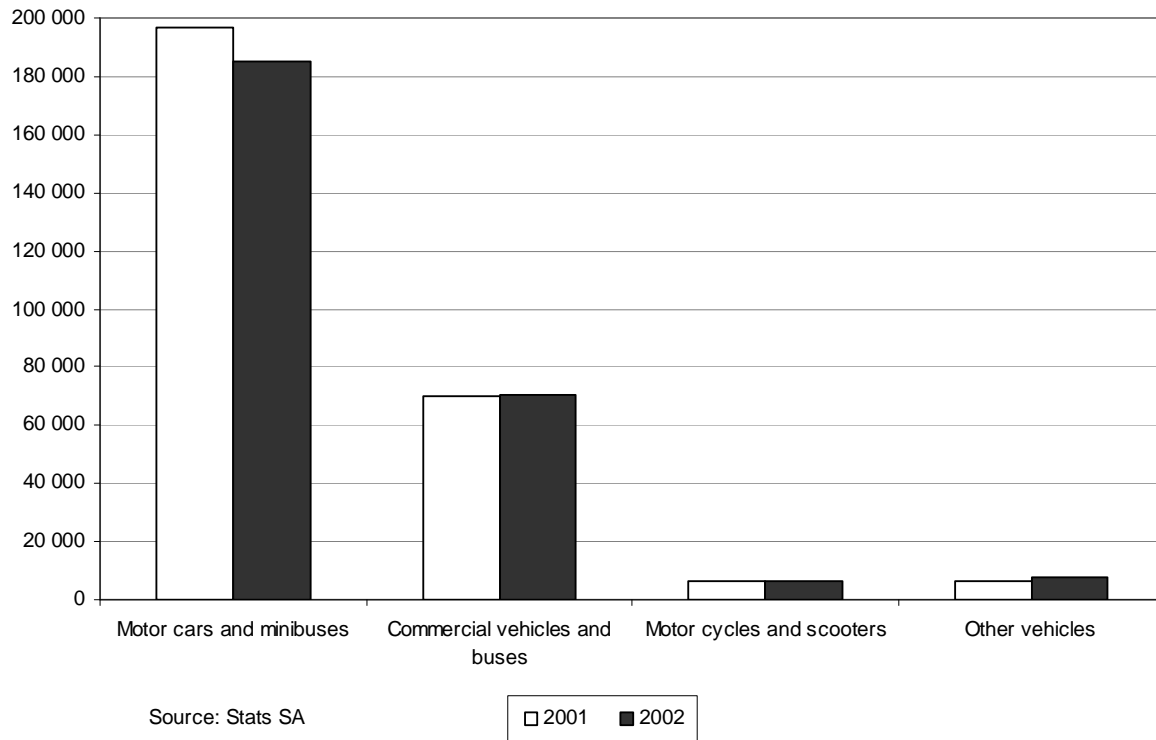
## Key findings regarding the total number of vehicles sold for the first ten months of 2002

### Total number of vehicles sold remained unchanged

*The total number of vehicles sold during the first ten months of 2002 remained unchanged compared with the first ten months of 2001.*

The increase of 3,2% in the number of used vehicles sold was counteracted by a decrease of 3,2% in the number of new vehicles sold during the same period.

**Figure 2 – Total number of vehicles sold according to type of vehicle sold during the first ten months of 2002 compared with the first ten months of 2001**



PP  
**PJ Lehohla**  
 Statistician-General: Statistics South Africa

## Contents

Page

<b>Notes</b>	5
.....	
<b>Tables</b>	
Table 1 Actual values of motor trading income, excluding Value Added Tax, according to type of income (R'000)	7
Table 2 Seasonally adjusted values of motor trading income, excluding Value Added Tax, according to type of income (R'000)	8
Table 3 Other trading income and cash and credit sale transactions of vehicles, excluding Value Added Tax (R'000)	9
Table 4 Income from the sales of new and used vehicles, excluding Value Added Tax, according to type of vehicle (R'000)	10
Table 5 Income from the sales of new vehicles, excluding Value Added Tax, according to type of vehicle (R'000)	11
Table 6 Income from the sales of used vehicles, excluding Value Added Tax, according to type of vehicle (R'000)	12
Table 7 Total number of new and used vehicles sold according to type of vehicle .....	13
Table 8 Number of new vehicles sold according to type of vehicle .....	14
Table 9 Number of used vehicles sold according to type of vehicle .....	15
 <b>Additional information</b>	
Explanatory notes .....	16
Technical note	17
.....	
Glossary	18
.....	
<b>For more information</b>	19
.....	

## Notes

<b>Forthcoming issues</b>	<b>Issue</b>	<b>Expected release date</b>
	November 2002	23 January 2003
	December 2002	20 February 2003
 <b>Purpose of the survey</b>	<p>The retail trade in motor vehicles and accessories survey is a monthly survey covering a sample of private enterprises (firms) operating in the motor trade industry in South Africa. The results of the survey are used to compile estimates of the Gross Domestic Product (GDP) and its components, which are used to develop and monitor government policy. Furthermore, these statistics are also used by the private sector in analyses of comparative business and industry performance.</p>	
 <b>Re-engineered retail trade in motor vehicles and accessories</b>	<p>Prior to January 2000, Stats SA collected and published information on retail trade in motor vehicles and accessories, including Value Added Tax (VAT). Due to users' needs, specifically compilers of National Accounts, Stats SA has overhauled and re-designed the retail trade in motor vehicles and accessories questionnaire. As from January 2000, Stats SA collects information regarding retail trade in motor vehicles and accessories, excluding VAT. In order to provide users with a continuous time series, Stats SA calculated retail trade in motor vehicles and accessories, excluding VAT, for the period January 1992 to December 1999 which was published in the statistical release P6343,3 (entitled Retail trade in motor vehicles and accessories, January 1992 to December 1999) on 18 May 2000.</p>	
 <b>New sample</b>	<p>According to international best practice and in order to train the relevant respondents in using the new questionnaire, to validate the information received and to avoid a break in the time series published in this statistical release, Stats SA decided to introduce the new questionnaire as the first step in the re-engineering process. Stats SA will in due course, as the second step, introduce a new sample.</p> <p>Currently Stats SA is busy re-engineering the register of businesses which serves as the sampling frame, in collaboration with the South African Revenue Service and the Departments of Trade and Industry and Labour. The process will take some time, since there are hundreds of thousands of businesses, many of which are, in any given period, changing ownership, closing, or being registered. As soon as this improvement in the listing and classification of businesses has been implemented, Stats SA will draw a new sample.</p>	

**Changes in the numbering of tables**

It should be noted that the numbering of tables changed as from July 2000 as indicated in table A.

**Table A - Title of table according to new and old numbers**

<b>New number (since July 2000)</b>	<b>Title of table</b>	<b>Old number (prior to May 2000)</b>
Table 1	Actual values of motor trading income, excluding Value Added Tax, according to type of income (R'000)	Table 1
Table 2	Seasonally adjusted values of motor trading income, excluding Value Added Tax, according to type of income (R'000)	Table 3
Table 3	Other trading income and cash and credit sale transactions of vehicles, excluding Value Added Tax (R'000)	Table 5
Table 4	Income from the sales of new and used vehicles, excluding Value Added Tax, according to type of vehicle (R'000)	Table 7
Table 5	Income from the sales of new vehicles, excluding Value Added Tax, according to type of vehicle (R'000)	Table 8
Table 6	Income from the sales of used vehicles, excluding Value Added Tax, according to type of vehicle (R'000)	Table 9
Table 7	Total number of new and used vehicles sold according to type of vehicle	Table 10
Table 8	Number of new vehicles sold according to type of vehicle	Table 11
Table 9	Number of used vehicles sold according to type of vehicle	Table 13

**Table 1 - Actual values of motor trading income, excluding Value Added Tax, according to type of income (R'000)**

Year and month	Income from the sales of new vehicles	Income from the sales of used vehicles	Workshop income	Other trading Income	Total motor trading income
2000 Jan	2 058 959	1 290 841	742 701	1 451 141	5 543 642
Feb	2 488 110	1 455 940	865 377	1 594 588	6 404 015
Mar	2 582 651	1 380 169	820 381	1 569 285	6 352 486
Apr	2 379 951	1 254 378	784 292	1 510 126	5 928 747
May	2 790 616	1 406 265	863 617	1 699 218	6 759 716
Jun	2 832 640	1 512 794	898 868	1 702 566	6 946 868
Jul	2 896 738	1 578 268	859 195	1 703 913	7 038 114
Aug	2 948 868	1 730 360	905 347	1 762 579	7 347 154
Sep	2 917 187	1 650 792	875 382	1 722 743	7 166 104
Oct	2 838 360	1 663 288	891 929	1 781 587	7 175 164
Nov	2 940 836	1 809 703	910 237	1 859 006	7 519 782
Dec	2 958 820	1 602 612	787 778	1 702 967	7 052 177
<b>Total</b>	<b>32 633 736</b>	<b>18 335 410</b>	<b>10 205 104</b>	<b>20 059 719</b>	<b>81 233 969</b>
2001 Jan	2 918 943	1 700 807	835 784	1 747 188	7 202 722
Feb	3 289 202	1 731 904	912 281	1 783 565	7 716 952
Mar	3 450 131	1 759 419	928 640	1 756 789	7 894 979
Apr	2 867 901	1 635 196	810 200	1 737 986	7 051 283
May	3 035 816	1 897 990	934 221	1 869 218	7 737 245
Jun	3 300 450	1 849 284	888 122	1 842 999	7 880 855
Jul	3 149 898	2 015 770	896 794	1 873 924	7 936 386
Aug	3 140 369	2 049 533	905 058	1 870 111	7 965 071
Sep	2 988 180	1 899 299	845 363	1 760 695	7 493 537
Oct	3 295 763	2 248 440	960 468	1 889 234	8 393 905
Nov	3 396 440	2 048 822	992 223	1 911 238	8 348 723
Dec	3 856 672	2 032 199	813 765	1 795 806	8 498 442
<b>Total</b>	<b>38 689 765</b>	<b>22 868 663</b>	<b>10 722 919</b>	<b>21 838 753</b>	<b>94 120 100</b>
2002 Jan	3 320 574	2 218 786	981 070	1 863 494	8 383 924
Feb	3 563 277	2 223 508	1 006 713	1 911 990	8 705 488
Mar	3 391 331	2 386 829	945 004	1 901 278	8 624 442
Apr	3 558 341	2 310 584	1 001 781	2 011 580	8 882 286
May	3 892 299	2 484 965	1 004 935	2 065 989	9 448 188
Jun	3 566 716	2 450 973	960 194	2 038 700	9 016 583
Jul	4 007 600	2 543 542	1 009 491	2 068 986	9 629 619
Aug	4 138 638	2 654 651	1 043 543	2 210 597	10 047 429
Sep	4 223 902	2 516 673	1 085 854	2 037 286	9 863 715
Oct	3 933 179	2 671 332	1 114 299	2 263 273	9 982 083



**Table 2 - Seasonally adjusted values of motor trading income, excluding Value Added Tax, according to type of income (R'000)**

<b>Year and month</b>	<b>Income from the sales of new vehicles</b>	<b>Income from the sales of used vehicles</b>	<b>Workshop income</b>	<b>Other trading Income</b>	<b>Total motor trading income</b>
2000					
Jan	2 186 838	1 351 911	779 336	1 503 457	5 821 542
Feb	2 405 528	1 443 647	820 278	1 617 871	6 287 324
Mar	2 433 491	1 399 212	815 015	1 599 781	6 247 499
Apr	2 534 988	1 372 518	823 888	1 533 341	6 264 735
May	2 768 077	1 448 954	845 553	1 650 841	6 713 425
Jun	2 858 165	1 527 653	915 415	1 684 420	6 985 653
Jul	2 794 716	1 526 817	859 826	1 679 932	6 861 291
Aug	2 887 864	1 627 620	882 235	1 726 449	7 124 168
Sep	2 873 483	1 644 798	867 784	1 755 122	7 141 187
Oct	2 862 183	1 549 511	863 116	1 739 659	7 014 469
Nov	2 974 319	1 722 704	871 296	1 797 734	7 366 053
Dec	3 032 447	1 689 344	856 734	1 763 336	7 341 861
<b>Total</b>	<b>32 612 099</b>	<b>18 304 689</b>	<b>10 200 476</b>	<b>20 051 943</b>	<b>81 169 207</b>
2001					
Jan	3 105 005	1 771 138	878 043	1 808 640	7 562 826
Feb	3 184 432	1 729 612	863 546	1 807 489	7 585 079
Mar	3 245 278	1 778 822	924 783	1 790 487	7 739 370
Apr	3 070 080	1 796 155	854 071	1 767 251	7 487 557
May	2 993 860	1 944 189	910 044	1 812 309	7 660 402
Jun	3 331 320	1 870 013	904 279	1 820 133	7 925 745
Jul	3 058 541	1 948 457	899 502	1 848 814	7 755 314
Aug	3 073 065	1 917 729	883 833	1 827 040	7 701 667
Sep	2 925 958	1 892 763	835 562	1 800 890	7 455 173
Oct	3 350 974	2 095 538	928 618	1 847 133	8 222 263
Nov	3 435 378	1 966 858	949 166	1 847 195	8 198 597
Dec	3 935 718	2 140 567	886 703	1 862 110	8 825 098
<b>Total</b>	<b>38 709 609</b>	<b>22 851 841</b>	<b>10 718 150</b>	<b>21 839 491</b>	<b>94 119 091</b>
2002					
Jan	3 538 326	2 297 735	1 029 757	1 926 839	8 792 657
Feb	3 441 431	2 228 128	952 921	1 935 216	8 557 696
Mar	3 184 952	2 415 009	941 942	1 937 483	8 479 386
Apr	3 826 136	2 548 913	1 059 494	2 048 602	9 483 145
May	3 828 253	2 530 724	975 448	2 000 633	9 335 058
Jun	3 595 769	2 480 561	976 853	2 013 526	9 066 709
Jul	3 905 634	2 457 979	1 013 892	2 042 988	9 420 493
Aug	4 054 760	2 476 349	1 021 424	2 156 886	9 709 419
Sep	4 129 343	2 511 688	1 071 812	2 088 059	9 800 902
Oct	4 008 384	2 497 279	1 077 398	2 214 513	9 797 574

**Table 3 - Other trading income and cash and credit sale transactions of vehicles, excluding Value Added Tax (R'000)**

Year and month	Other trading income			Total cash and credit sale transactions of vehicles	
	Sales of spares and accessories	Miscellaneous	Total other trading income		
2000	Jan	708 574	742 567	1 451 141	3 349 800
	Feb	784 950	809 637	1 594 588	3 944 050
	Mar	760 044	809 241	1 569 285	3 962 821
	Apr	712 483	797 642	1 510 126	3 634 329
	May	849 947	849 271	1 699 218	4 196 880
	Jun	846 488	856 078	1 702 566	4 345 433
	Jul	839 196	864 717	1 703 913	4 475 006
	Aug	865 724	896 855	1 762 579	4 679 228
	Sep	813 309	909 434	1 722 743	4 567 979
	Oct	834 604	946 983	1 781 587	4 501 648
	Nov	875 951	983 055	1 859 006	4 750 540
	Dec	750 226	952 741	1 702 967	4 561 432
	<b>Total</b>	<b>9 641 496</b>	<b>10 418 221</b>	<b>20 059 719</b>	<b>50 969 146</b>
2001	Jan	810 426	936 762	1 747 188	4 619 750
	Feb	845 737	937 828	1 783 565	5 021 106
	Mar	836 725	920 064	1 756 789	5 209 550
	Apr	792 267	945 719	1 737 986	4 503 097
	May	889 893	979 325	1 869 218	4 933 807
	Jun	851 780	991 219	1 842 999	5 149 734
	Jul	875 391	998 533	1 873 924	5 165 667
	Aug	893 260	976 851	1 870 111	5 189 902
	Sep	840 883	919 812	1 760 695	4 887 479
	Oct	937 661	951 573	1 889 234	5 544 203
	Nov	949 188	962 050	1 911 238	5 445 261
	Dec	853 922	941 884	1 795 806	5 888 870
	<b>Total</b>	<b>10 377 133</b>	<b>11 461 620</b>	<b>21 838 753</b>	<b>61 558 426</b>
2002	Jan	968 363	895 131	1 863 494	5 539 360
	Feb	1 006 438	905 552	1 911 990	5 786 785
	Mar	1 004 589	896 689	1 901 278	5 778 159
	Apr	1 020 941	990 638	2 011 580	5 868 925
	May	1 068 007	997 982	2 065 989	6 373 593
	Jun	1 036 066	1 002 635	2 038 700	6 017 689
	Jul	1 110 350	958 637	2 068 986	6 551 142
	Aug	1 133 765	1 076 833	2 210 597	6 793 289
	Sep	987 757	1 049 529	2 037 286	6 740 575
	Oct	1 174 977	1 088 296	2 263 273	6 604 511

**Table 4 - Income from the sales of new and used vehicles, excluding Value Added Tax, according to type of vehicle (R'000)**

<b>Year and month</b>	<b>Motor cars and minibuses</b>	<b>Commercial vehicles and buses</b>	<b>Motor cycles and scooters</b>	<b>Other new and used vehicles</b>	<b>Total income from the sales of new and used vehicles</b>
2000 Jan	2 423 489	881 025	20 899	24 387	3 349 800
Feb	2 759 660	1 138 405	21 249	24 735	3 944 050
Mar	2 885 117	1 046 454	14 133	17 117	3 962 820
Apr	2 669 863	928 275	17 664	18 526	3 634 329
May	3 046 609	1 113 234	20 492	16 545	4 196 881
Jun	3 126 614	1 181 638	20 861	16 319	4 345 434
Jul	3 261 501	1 180 684	17 901	14 921	4 475 006
Aug	3 377 170	1 264 997	17 530	19 530	4 679 228
Sep	3 306 438	1 223 339	17 725	20 477	4 567 979
Oct	3 250 142	1 214 311	15 459	21 736	4 501 648
Nov	3 486 151	1 215 416	23 687	25 286	4 750 539
Dec	3 391 355	1 123 798	22 202	24 078	4 561 432
<b>Total</b>	<b>36 984 109</b>	<b>13 511 576</b>	<b>229 802</b>	<b>243 657</b>	<b>50 969 146</b>
2001 Jan	3 566 543	1 011 742	19 598	21 867	4 619 750
Feb	3 736 996	1 244 856	16 719	22 534	5 021 106
Mar	3 846 843	1 323 746	16 834	22 126	5 209 550
Apr	3 398 639	1 069 875	14 293	20 289	4 503 097
May	3 728 889	1 170 123	17 103	17 691	4 933 806
Jun	3 826 021	1 287 283	16 245	20 185	5 149 734
Jul	3 873 052	1 244 429	18 252	29 934	5 165 668
Aug	3 910 224	1 236 346	19 649	23 684	5 189 902
Sep	3 646 461	1 183 907	15 797	41 314	4 887 479
Oct	4 093 013	1 375 982	24 956	50 252	5 544 203
Nov	4 006 352	1 378 432	23 429	37 048	5 445 262
Dec	4 493 388	1 343 793	20 619	31 070	5 888 871
<b>Total</b>	<b>46 126 421</b>	<b>14 870 514</b>	<b>223 494</b>	<b>337 994</b>	<b>61 558 428</b>
2002 Jan	4 236 057	1 249 226	22 812	31 265	5 539 360
Feb	4 447 179	1 292 329	19 681	27 597	5 786 785
Mar	4 495 122	1 225 550	24 493	32 994	5 778 160
Apr	4 447 411	1 370 240	20 887	30 387	5 868 925
May	4 824 813	1 507 846	16 619	27 985	6 377 264
Jun	4 604 266	1 371 535	15 022	26 865	6 017 689
Jul	4 857 611	1 635 337	20 494	37 700	6 551 142
Aug	5 175 101	1 547 594	21 792	48 801	6 793 289
Sep	5 048 735	1 608 281	24 017	59 543	6 740 575
Oct	4 886 427	1 632 978	29 260	55 847	6 604 511

**Table 5 - Income from the sales of new vehicles, excluding Value Added Tax, according to type of vehicle (R'000)**

<b>Year and month</b>	<b>Motor cars and minibuses</b>	<b>Commercial vehicles and buses</b>	<b>Motor cycles and scooters</b>	<b>Other new vehicles</b>	<b>Total income from the sales of new vehicles</b>
2000 Jan	1 355 434	663 558	19 087	20 879	2 058 959
Feb	1 644 221	804 117	18 485	21 287	2 488 110
Mar	1 759 945	796 821	12 940	12 946	2 582 651
Apr	1 622 741	728 158	15 903	13 149	2 379 951
May	1 895 860	863 225	19 194	12 337	2 790 616
Jun	1 882 047	918 190	19 037	13 365	2 832 640
Jul	1 931 416	935 947	17 185	12 190	2 896 738
Aug	1 944 982	972 987	16 372	14 527	2 948 868
Sep	1 919 172	966 101	16 848	15 066	2 917 187
Oct	1 861 188	944 942	14 606	17 624	2 838 360
Nov	1 966 328	930 690	22 604	21 215	2 940 836
Dec	2 040 584	877 070	20 849	20 317	2 958 820
<b>Total</b>	<b>21 823 918</b>	<b>10 401 806</b>	<b>213 110</b>	<b>194 902</b>	<b>32 633 736</b>
2001 Jan	2 109 878	772 508	18 916	17 641	2 918 943
Feb	2 264 644	990 840	15 976	17 742	3 289 202
Mar	2 368 530	1 047 645	15 910	18 045	3 450 131
Apr	2 010 688	827 741	13 460	16 012	2 867 901
May	2 109 348	896 775	16 514	13 179	3 035 816
Jun	2 224 955	1 044 485	15 333	15 678	3 300 450
Jul	2 189 330	920 537	17 194	22 837	3 149 898
Aug	2 181 638	921 713	18 522	18 497	3 140 369
Sep	2 036 491	901 066	15 126	35 497	2 988 180
Oct	2 181 554	1 045 792	23 685	44 732	3 295 763
Nov	2 280 995	1 061 290	22 814	31 340	3 396 440
Dec	2 756 403	1 054 893	19 973	25 403	3 856 672
<b>Total</b>	<b>26 714 454</b>	<b>11 485 285</b>	<b>213 423</b>	<b>276 603</b>	<b>38 689 765</b>
2002 Jan	2 334 430	939 677	22 161	24 306	3 320 574
Feb	2 531 379	991 930	19 106	20 862	3 563 277
Mar	2 473 531	869 906	23 892	24 001	3 391 331
Apr	2 457 142	1 059 165	20 317	21 717	3 558 341
May	2 686 409	1 168 755	15 647	21 488	3 892 299
Jun	2 509 760	1 021 003	14 541	21 411	3 566 716
Jul	2 715 036	1 243 900	20 068	28 596	4 007 600
Aug	2 913 985	1 162 721	21 222	40 710	4 138 638
Sep	2 911 396	1 235 599	23 102	53 806	4 223 902
Oct	2 666 701	1 191 220	28 564	46 695	3 933 179

**Table 6 - Income from the sales of used vehicles, excluding Value Added Tax, according to type of vehicle (R'000)**

<b>Year and month</b>	<b>Motor cars and minibuses</b>	<b>Commercial vehicles and buses</b>	<b>Motor cycles and scooters</b>	<b>Other used vehicles</b>	<b>Total income from the sales of used vehicles</b>
2000 Jan	1 068 055	217 467	1 812	3 508	1 290 841
Feb	1 115 439	334 288	2 764	3 448	1 455 940
Mar	1 125 172	249 633	1 193	4 171	1 380 169
Apr	1 047 122	200 117	1 761	5 377	1 254 378
May	1 150 749	250 009	1 298	4 208	1 406 265
Jun	1 244 567	263 448	1 824	2 954	1 512 794
Jul	1 330 085	244 737	716	2 731	1 578 268
Aug	1 432 188	292 010	1 158	5 003	1 730 360
Sep	1 387 266	257 238	877	5 411	1 650 792
Oct	1 388 954	269 369	853	4 112	1 663 288
Nov	1 519 823	284 726	1 083	4 071	1 809 703
Dec	1 350 771	246 728	1 353	3 761	1 602 612
<b>Total</b>	<b>15 160 191</b>	<b>3 109 770</b>	<b>16 692</b>	<b>48 755</b>	<b>18 335 410</b>
2001 Jan	1 456 665	239 234	682	4 226	1 700 807
Feb	1 472 352	254 016	743	4 792	1 731 904
Mar	1 478 313	276 101	924	4 081	1 759 419
Apr	1 387 951	242 134	833	4 277	1 635 196
May	1 619 541	273 348	589	4 512	1 897 990
Jun	1 601 066	242 798	912	4 507	1 849 284
Jul	1 683 722	323 892	1 058	7 097	2 015 770
Aug	1 728 586	314 633	1 127	5 187	2 049 533
Sep	1 609 970	282 841	671	5 817	1 899 299
Oct	1 911 459	330 190	1 271	5 520	2 248 440
Nov	1 725 357	317 142	615	5 708	2 048 822
Dec	1 736 985	288 900	646	5 667	2 032 199
<b>Total</b>	<b>19 411 967</b>	<b>3 385 229</b>	<b>10 071</b>	<b>61 391</b>	<b>22 868 663</b>
2002 Jan	1 901 627	309 549	651	6 959	2 218 786
Feb	1 915 800	300 399	575	6 735	2 223 508
Mar	2 021 591	355 644	601	8 993	2 386 829
Apr	1 990 269	311 075	570	8 670	2 310 584
May	2 138 404	339 091	972	6 497	2 484 965
Jun	2 094 506	350 532	481	5 454	2 450 973
Jul	2 142 575	391 437	426	9 104	2 543 542
Aug	2 261 116	384 873	570	8 091	2 654 651
Sep	2 137 339	372 682	915	5 737	2 516 673
Oct	2 219 726	441 758	696	9 152	2 671 332

**Table 7 - Total number of new and used vehicles sold according to type of vehicle**

<b>Year and month</b>	<b>Motor cars and minibuses</b>	<b>Commercial vehicles and buses</b>	<b>Motor cycles and scooters</b>	<b>Other new and used vehicles</b>	<b>Total number of new and used vehicles sold</b>
2000 Jan	35 646	10 290	1 147	1 551	48 636
Feb	38 260	11 958	1 023	1 512	52 754
Mar	40 773	11 192	790	1 381	54 137
Apr	35 702	8 999	868	991	46 560
May	41 462	10 611	961	815	53 849
Jun	41 991	11 327	966	936	55 222
Jul	42 160	11 111	777	727	54 775
Aug	43 842	11 757	826	847	57 271
Sep	42 791	10 905	820	921	55 437
Oct	42 047	11 853	805	1 243	55 949
Nov	43 656	11 149	941	912	56 659
Dec	40 668	10 317	867	916	52 767
<b>Total</b>	<b>488 998</b>	<b>131 469</b>	<b>10 791</b>	<b>12 752</b>	<b>644 016</b>
2001 Jan	42 497	9 607	803	895	53 803
Feb	44 813	10 709	758	542	56 823
Mar	44 177	11 385	675	786	57 024
Apr	39 594	9 367	577	666	50 203
May	42 278	10 106	700	576	53 661
Jun	43 592	11 676	643	604	56 515
Jul	44 050	11 471	661	593	56 775
Aug	44 340	11 212	712	722	56 986
Sep	41 226	10 072	668	1 027	52 994
Oct	45 403	11 597	980	1 166	59 145
Nov	43 663	11 208	1 009	1 467	57 348
Dec	45 155	10 640	765	1 296	57 855
<b>Total</b>	<b>520 788</b>	<b>129 050</b>	<b>8 951</b>	<b>10 340</b>	<b>669 132</b>
2002 Jan	44 444	10 480	773	1 291	56 987
Feb	43 676	10 480	621	764	55 541
Mar	39 239	9 676	684	990	50 589
Apr	40 594	10 525	716	740	52 576
May	43 822	11 399	554	678	56 452
Jun	41 987	10 638	551	515	53 691
Jul	41 954	12 464	676	836	55 930
Aug	44 504	11 884	779	936	58 103
Sep	43 368	11 525	838	1 085	56 815
Oct	43 179	11 719	899	1 395	57 193

Table 8 - Number of new vehicles sold according to type of vehicle

Year and month	Motor cars and minibuses	Commercial vehicles and buses	Motor cycles and scooters	Other new vehicles	Total number of new vehicles sold	
2000	Jan	14 609	6 527	1 045	1 423	23 605
	Feb	16 557	7 430	889	1 368	26 245
	Mar	19 136	7 190	707	1 156	28 189
	Apr	16 637	6 111	758	671	24 177
	May	19 933	6 911	887	701	28 432
	Jun	19 250	7 602	887	813	28 553
	Jul	19 558	7 457	731	633	28 379
	Aug	19 812	7 865	751	742	29 169
	Sep	19 633	7 252	768	781	28 434
	Oct	18 717	7 660	756	1 134	28 267
	Nov	19 229	7 415	867	799	28 311
	Dec	18 737	6 714	792	817	27 060
	<b>Total</b>	<b>221 808</b>	<b>86 134</b>	<b>9 838</b>	<b>11 038</b>	<b>328 821</b>
2001	Jan	19 212	6 213	760	797	26 983
	Feb	21 752	7 002	717	432	29 903
	Mar	21 708	7 568	619	681	30 576
	Apr	18 350	6 009	530	566	25 454
	May	19 233	6 755	653	461	27 103
	Jun	19 983	7 843	591	503	28 920
	Jul	19 451	7 304	604	475	27 834
	Aug	19 674	6 796	654	616	27 740
	Sep	17 955	6 490	628	918	25 991
	Oct	19 171	7 653	920	1 062	28 806
	Nov	19 713	7 346	976	1 331	29 367
	Dec	22 575	7 213	732	1 144	31 664
	<b>Total</b>	<b>238 777</b>	<b>84 192</b>	<b>8 384</b>	<b>8 986</b>	<b>340 341</b>
2002	Jan	18 582	6 624	740	1 114	27 059
	Feb	19 237	6 907	590	611	27 345
	Mar	17 796	5 862	648	850	25 157
	Apr	17 554	7 092	685	614	25 946
	May	19 543	7 658	507	591	28 299
	Jun	18 341	6 633	521	423	25 918
	Jul	17 592	7 980	646	650	26 868
	Aug	18 958	7 418	741	810	27 927
	Sep	18 868	7 480	795	985	28 128
	Oct	18 557	7 030	853	1 247	27 688

Table 9 - Number of used vehicles sold according to type of vehicle

Year and month	Motor cars and minibuses	Commercial vehicles and buses	Motor cycles and scooters	Other used vehicles	Total number of used vehicles sold
2000 Jan	21 037	3 763	102	128	25 031
Feb	21 703	4 528	134	144	26 509
Mar	21 637	4 002	83	225	25 948
Apr	19 065	2 888	110	320	22 383
May	21 529	3 700	74	114	25 417
Jun	22 741	3 725	79	123	26 669
Jul	22 602	3 654	46	94	26 396
Aug	24 030	3 892	75	105	28 102
Sep	23 158	3 653	52	140	27 003
Oct	23 330	4 193	49	109	27 682
Nov	24 427	3 734	74	113	28 348
Dec	21 931	3 603	75	99	25 707
<b>Total</b>	<b>267 190</b>	<b>45 335</b>	<b>953</b>	<b>1 714</b>	<b>315 195</b>
2001 Jan	23 285	3 394	43	98	26 820
Feb	23 061	3 707	41	110	26 920
Mar	22 469	3 817	56	105	26 448
Apr	21 244	3 358	47	100	24 749
May	23 045	3 351	47	115	26 558
Jun	23 609	3 833	52	101	27 595
Jul	24 599	4 167	57	118	28 941
Aug	24 666	4 416	58	106	29 246
Sep	23 271	3 582	40	109	27 003
Oct	26 232	3 944	60	104	30 339
Nov	23 950	3 862	33	136	27 981
Dec	22 580	3 427	33	152	26 191
<b>Total</b>	<b>282 011</b>	<b>44 858</b>	<b>567</b>	<b>1 354</b>	<b>328 791</b>
2002 Jan	25 862	3 856	33	177	29 928
Feb	24 439	3 573	31	153	28 196
Mar	21 443	3 814	36	140	25 432
Apr	23 040	3 433	31	126	26 630
May	24 279	3 741	47	87	28 153
Jun	23 646	4 005	30	92	27 773
Jul	24 362	4 484	30	186	29 062
Aug	25 546	4 466	38	126	30 176
Sep	24 500	4 045	43	100	28 687
Oct	24 622	4 689	46	148	29 505



## Additional information

### Explanatory notes

- |                                      |  |
|--------------------------------------|--|
| <b>Introduction</b>                  | <p><b>1</b> This publication contains results of the monthly survey of retail trade in motor vehicles and accessories. The survey is designed to obtain information regarding -</p> <ul style="list-style-type: none"> <li>• income from the sales of new vehicles;</li> <li>• income from the sales of used vehicles;</li> <li>• workshop income;</li> <li>• other trading income;</li> <li>• cash and credit sale transactions of vehicles; and</li> <li>• the number of new and used vehicles sold,</li> </ul> <p><b>2</b> The information in this publication includes actual and seasonally adjusted values of motor trade sales. Prior to January 2000, Stats SA collected and published information on motor trade sales including Value Added Tax (VAT). As from January 2000, Stats SA collects information regarding retail trade in motor vehicles and accessories excluding VAT.</p> |
| <b>Scope of the survey</b>           | <p><b>3</b> The survey collects information from a sample of enterprises in South Africa that are predominantly involved in the retail trade in motor vehicles and accessories. These enterprises include -</p> <ul style="list-style-type: none"> <li>• motor vehicle dealers, filling stations and workshops;</li> <li>• motor cycle dealers;</li> <li>• spares and accessories dealers;</li> <li>• retail tyre dealers;</li> <li>• automotive electricians;</li> <li>• radiator repairers;</li> <li>• panel beaters and spray painters;</li> <li>• other specialised motor repair services; and</li> <li>• other motor trade,</li> </ul>  |
| <b>Classification</b>                | <p><b>4</b> The 1993 edition of the Standard Industrial Classification of all Economic Activities (SIC), Fifth edition, Report No. 09-90-02, was used to classify the statistical units in the survey. The SIC is based on the 1990 International Standard Industrial Classification for all Economic Activities (ISIC) with suitable adaptations for local conditions. Statistics in this publication are presented at SIC subgroup (5 digit) level. Each statistical unit is classified to an industry that reflects the predominant activity of the enterprise.</p>   |
| <b>Statistical unit</b>              | <p><b>5</b> The statistical unit for collection of information is an enterprise. An enterprise is a legal entity consisting of one or more establishments (branches), including the head office, but excluding holding or subsidiary companies. Information is collected from enterprises that are predominantly involved in the retail trade in motor vehicles and accessories.</p>   |
| <b>Survey methodology and design</b> | <p><b>6</b> All statistical units are stratified in the motor trade industry according to type of dealer and measure of size, where measure of size is the total motor trading income of the enterprise. All large enterprises are completely enumerated. For medium size enterprises and small enterprises, samples are drawn by systematically selecting enterprises with equal probability.</p> <p><b>7</b> The data are collected by mail each month from a sample of approximately 420 motor trade enterprises from a population of approximately 14 000 motor trade enterprises. Questionnaires have to be returned to Stats SA within 10 days after the end of the reference month. Fax and telephone reminders are used to follow up non-respondents.</p>  |

<b>Seasonal adjustment</b>	<b>8</b>	Seasonally adjusted estimates of retail trade in motor vehicles and accessories are generated each month, using the X-11 Seasonal Adjustment Program developed by US Bureau of the Census Economic Research and Analyses Division, 1968.												
	<b>9</b>	Seasonal adjustment is a means of removing the estimated effects of normal seasonal variation from the series so that the effects of other influences on the series can be more clearly recognised. Seasonal adjustment does not aim to remove irregular or non-seasonal influences which may be present in any particular month. Influences that are volatile or unsystematic can still make it difficult to interpret the movement of the series even after adjustment for seasonal variations. Therefore, the month-to-month movements of seasonally adjusted estimates may not be reliable indicators of trend behaviour.												
<b>Trend</b>	<b>10</b>	The trend is a long-term pattern or movement of a time series. The X-11 Seasonal Adjustment Program is used for smoothing seasonally adjusted data.												
<b>Reliability of estimates</b>	<b>11</b>	Data presented in this publication are based on information obtained from a sample of enterprises and is, therefore, subject to sampling variability; that is, it may differ from the figures that would have been produced if the data had been obtained from all motor trade enterprises in South Africa.												
	<b>12</b>	Inaccuracies may occur because of imperfections in reporting by enterprises and errors made in collection and processing of the data. Inaccuracies of this kind are referred to as non-sampling errors. Every effort is made to reduce non-sampling errors to a minimum by careful designing the questionnaires, pilot studies, editing of data and efficient operating procedures.												
<b>Related publications</b>	<b>13</b>	Users may also wish to refer to the following publications which are available from Stats SA: <ul style="list-style-type: none"> <li>• Bulletin of Statistics.</li> <li>• SA Statistics.</li> </ul>												
<b>Unpublished statistics</b>	<b>14</b>	In some cases Stats SA can also make available statistics which are not published. This information can be made available in one or more of the following ways: computer printouts, diskette and CD. Generally a charge is made for providing unpublished statistics.												
<b>Rounding-off of figures</b>	<b>15</b>	When figures have been rounded-off discrepancies may occur between sums of the component items and totals.												
<b>Symbols and abbreviations</b>		<table border="0" style="width: 100%;"> <tr> <td style="width: 30%;">CD</td> <td>Compact Disc</td> </tr> <tr> <td>GDP</td> <td>Gross Domestic Product</td> </tr> <tr> <td>ISIC</td> <td>International Standard Industrial Classification for all Economic Activities</td> </tr> <tr> <td>SIC</td> <td>Standard Industrial Classification of all Economic Activities</td> </tr> <tr> <td>Stats SA</td> <td>Statistics South Africa</td> </tr> <tr> <td>VAT</td> <td>Value Added Tax</td> </tr> </table>	CD	Compact Disc	GDP	Gross Domestic Product	ISIC	International Standard Industrial Classification for all Economic Activities	SIC	Standard Industrial Classification of all Economic Activities	Stats SA	Statistics South Africa	VAT	Value Added Tax
CD	Compact Disc													
GDP	Gross Domestic Product													
ISIC	International Standard Industrial Classification for all Economic Activities													
SIC	Standard Industrial Classification of all Economic Activities													
Stats SA	Statistics South Africa													
VAT	Value Added Tax													

## Technical note

<b>Response rate</b>	The response rate for the survey of retail trade in motor vehicles and accessories for October 2002 is 82,5%.
----------------------	---

## Glossary

<b>Enterprise (firm)</b>	An enterprise (firm) is a legal entity consisting of one or more establishments (branches) including the head office, but excluding holding or subsidiary companies.
<b>Establishment (branch)</b>	An establishment (branch) is the smallest economic unit which operates as a separate entity, for which comprehensive financial records are kept.
<b>Miscellaneous trading income</b>	Miscellaneous trading income includes the income from the sales of petrol, diesel oil and lubricants.
<b>Motor trading enterprise</b>	A motor trading enterprise is an enterprise deriving 50% or more of its income from the sales of goods relating to the motor industry.
<b>Other vehicles</b>	Other vehicles include caravans, trailers and tractors.
<b>Percentage change</b>	<p>When using monthly actual values, the percentage change is the change in actual values of the motor trading income of the relevant month compared with the actual values of the motor trading income of the same month in the previous year expressed as a percentage.</p> <p>When using annual actual values, the percentage change is the change in the actual values of motor trading income of the relevant year compared with the actual values of motor trading income of the previous year expressed as a percentage.</p> <p>When using seasonally adjusted values, the percentage change is the change in the seasonally adjusted values of the motor trading income of the relevant month compared with the seasonally adjusted values of the motor trading income of the previous month, expressed as a percentage.</p>
<b>Reference month</b>	Reference month for the survey means one calendar month.
<b>Total motor trading income</b>	Total motor trading income includes the income from the sales of new vehicles, the sales of used vehicles, income from the workshop and all other trading income.
<b>Workshop income</b>	Workshop income includes labour charges, as well as spares, accessories, fuels and lubricants transferred to the workshop,

## For more information

Stats SA publishes approximately 300 different statistical releases each year. It is not economically viable to produce them in more than one of South Africa's eleven official languages. Since the releases are used extensively, locally and also by international economic and social-scientific communities, Stats SA releases are published in English only.

Stats SA has copyright on this publication. Users may apply the information as they wish, provided that they acknowledge Stats SA as the source of the basic data wherever they process, apply, utilise, publish or distribute the data; and also that they specify that the relevant application and analysis (where applicable), result from their own processing of the data.

### Stats SA products

A complete set of Stats SA publications is available at the Stats SA Library and the following libraries:

National Library of South Africa, Pretoria Division  
 National Library of South Africa, Cape Town Division  
 Natal Society Library, Pietermaritzburg  
 Library of Parliament, Cape Town  
 Bloemfontein Public Library  
 Johannesburg Public Library  
 Eastern Cape Library Services, King William's Town  
 Central Regional Library, Polokwane  
 Central Reference Library, Nelspruit  
 Central Reference Collection, Kimberley  
 Central Reference Library, Mmabatho

Stats SA also provides a subscription service.

### Electronic services

A large range of data are available via on-line services, CD, diskette and computer printouts, For more details about our electronic data services, contact (012) 310 8600/8390/8351/4892/8496/8095.

You can visit us on the Internet at: <http://www.statssa.gov.za>

### Enquires

Telephone number:	(012) 310 8600/4892/8496/8390/8351/8095 (for user enquiries)
	(012) 310 8244 (technical enquires)
	(012) 310 8161 (publications)
	(012) 310 8490 (library)

Fax number: (012) 322 4271

e-mail address: [Motortrade@statssa.pwv.gov.za](mailto:Motortrade@statssa.pwv.gov.za)

Postal address: Private bag X44, Pretoria, 0001