



The South Africa I know, the home I understand

Statistical release

P6343.2

Motor trade sales (Preliminary)

November 2015

**Embargoed until:
21 January 2016
11:30**

Enquiries:

Keshnee Govender
(012) 310 8423

Forthcoming issue:

December 2015

Expected release date:

18 February 2016

Contents

Sales at current prices: results for November 2015..... 2

Table A – Key growth rates in motor trade sales at current prices..... 2

Table B – Motor trade sales at current prices for the latest three months by type of activity..... 2

Figure 1 – Motor trade sales at current prices..... 3

Figure 2 – Motor trade sales at current prices: year-on-year percentage change 3

Tables..... 4

Table 1 – Motor trade sales at current prices (R million)..... 4

Table 2 – Year-on-year percentage change in motor trade sales at current prices 4

Table 3 – Seasonally adjusted motor trade sales at current prices..... 4

Table 4 – Motor trade sales at current prices by type of activity (R million) 5

Table 5 – Year-on-year percentage change in motor trade sales at current prices by type of activity 5

Table 6 – Contribution of each type of activity to the year-on-year percentage change in motor trade sales at current prices 5

Survey information 6

Technical notes..... 7

Glossary..... 9

Technical enquiries 9

General information..... 10

Sales at current prices: results for November 2015

Table A – Key growth rates in motor trade sales at current prices

	Jun-15	Jul-15	Aug-15	Sep-15	Oct-15	Nov-15
Year-on-year % change, unadjusted	2,2	1,1	-3,2	0,2	-3,8	2,8
Month-on-month % change, seasonally adjusted	1,7	1,0	-2,9	2,2	-1,4	1,7
3-month % change, seasonally adjusted 1/	0,1	1,6	0,9	1,2	-0,8	0,2

1/ Percentage change between the previous 3 months and the 3 months ending in the month indicated.

Measured in nominal terms (current prices), motor trade sales increased by 2,8% year-on-year in November 2015. The largest positive annual growth rates were recorded for sales of accessories (10,7%), workshop income (10,7%) and new vehicle sales (7,1%) – see Table 5.

Seasonally adjusted motor trade sales increased by 1,7% in November 2015 compared with October 2015. This followed month-on-month changes of -1,4% in October 2015 and 2,2% in September 2015.

In the three months ended November 2015, seasonally adjusted motor trade sales increased by 0,2% compared with the previous three months.

Table B – Motor trade sales at current prices for the latest three months by type of activity

Type of activity	Sep – Nov 2014 (R million)	Weight	Sep – Nov 2015 (R million)	% change between Sep – Nov 2014 and Sep – Nov 2015	Contribution (% points) to the total % change
New vehicle sales	42 460	29,2	43 302	2,0	0,6
Used vehicle sales	26 989	18,5	26 789	-0,7	-0,1
Workshop income	9 312	6,4	9 755	4,8	0,3
Income from the sales of accessories	25 548	17,5	27 165	6,3	1,1
Income from fuel sales	36 299	24,9	33 006	-9,1	-2,3
Income from convenience store sales 1/	5 031	3,5	5 100	1,4	0,0
Total	145 636	100,0	145 118	-0,4	-0,4

1/ Includes 'other' sales and trading income.

Motor trade sales decreased by 0,4% in the three months ended November 2015 compared with the three months ended November 2014. The main contributor to this decrease was fuel sales (-9,1% and contributing -2,3 percentage points) – see Table B.

Figure 1 – Motor trade sales at current prices

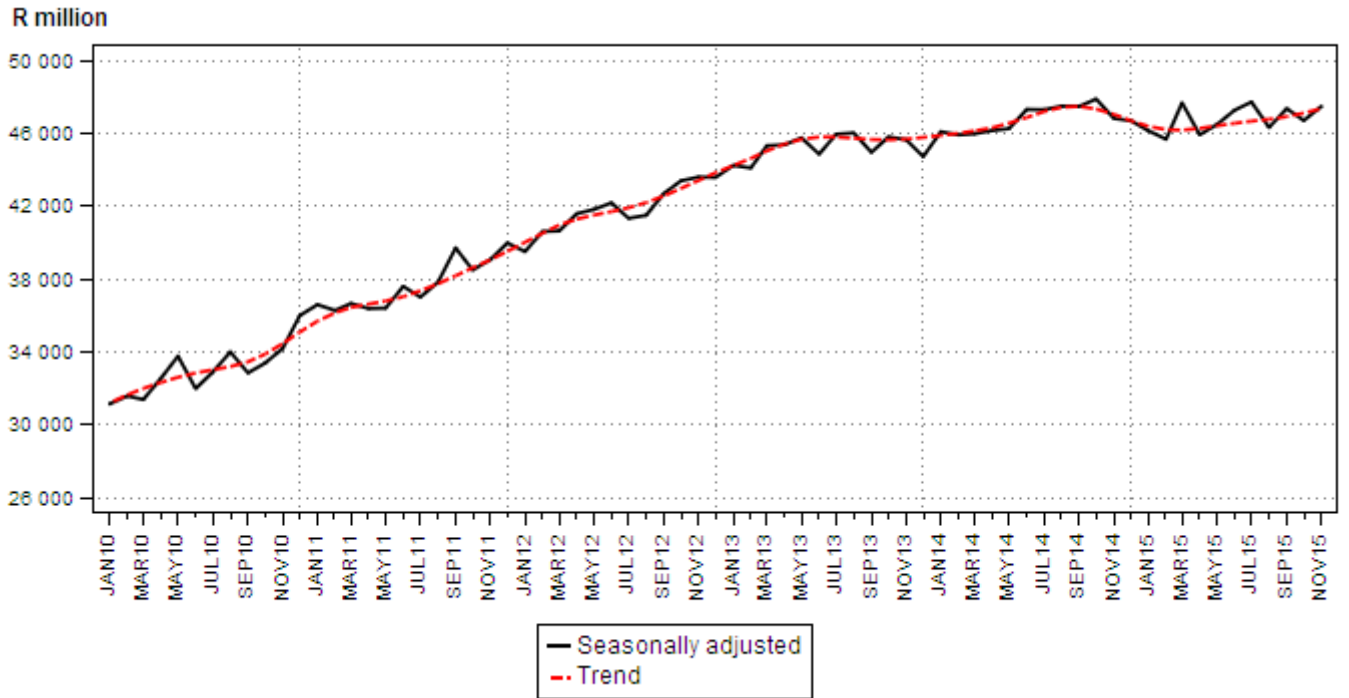
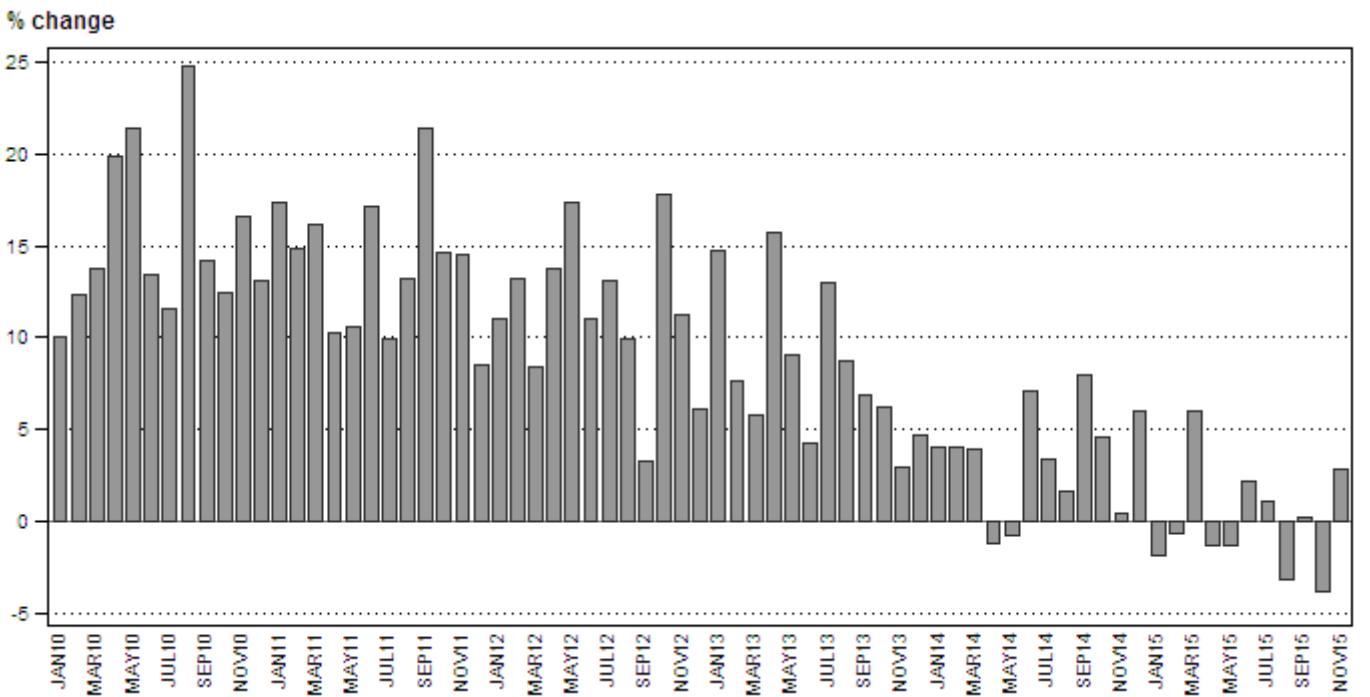


Figure 2 – Motor trade sales at current prices: year-on-year percentage change



PJ Lehohla
Statistician-General

Tables

Table 1 – Motor trade sales at current prices (R million)

Month	2009	2010	2011	2012	2013	2014	2015 1/
Jan	26 438	29 092	34 145	37 893	43 447	45 193	44 351
Feb	27 265	30 618	35 180	39 809	42 815	44 533	44 220
Mar	29 437	33 490	38 917	42 199	44 666	46 400	49 194
Apr	25 682	30 803	33 965	38 650	44 731	44 206	43 634
May	27 045	32 834	36 313	42 615	46 494	46 137	45 533
Jun	28 230	32 007	37 467	41 589	43 348	46 439	47 460
Jul	30 593	34 149	37 539	42 471	47 993	49 627	50 172
Aug	27 901	34 823	39 432	43 317	47 088	47 823	46 295
Sep	28 886	32 979	40 033	41 354	44 225	47 751	47 861
Oct	29 946	33 651	38 562	45 407	48 207	50 432	48 494
Nov	30 913	36 030	41 265	45 895	47 245	47 453	48 763
Dec	31 520	35 636	38 653	41 003	42 931	45 515	
Total	343 856	396 112	451 471	502 202	543 190	561 509	

1/ Figures for latest month are preliminary.

Table 2 – Year-on-year percentage change in motor trade sales at current prices

Month	2010	2011	2012	2013	2014	2015	2015 year-to-date
Jan	10,0	17,4	11,0	14,7	4,0	-1,9	-1,9
Feb	12,3	14,9	13,2	7,6	4,0	-0,7	-1,3
Mar	13,8	16,2	8,4	5,8	3,9	6,0	1,2
Apr	19,9	10,3	13,8	15,7	-1,2	-1,3	0,6
May	21,4	10,6	17,4	9,1	-0,8	-1,3	0,2
Jun	13,4	17,1	11,0	4,2	7,1	2,2	0,5
Jul	11,6	9,9	13,1	13,0	3,4	1,1	0,6
Aug	24,8	13,2	9,9	8,7	1,6	-3,2	0,1
Sep	14,2	21,4	3,3	6,9	8,0	0,2	0,1
Oct	12,4	14,6	17,8	6,2	4,6	-3,8	-0,3
Nov	16,6	14,5	11,2	2,9	0,4	2,8	0,0
Dec	13,1	8,5	6,1	4,7	6,0		
Total	15,2	14,0	11,2	8,2	3,4		

Table 3 – Seasonally adjusted motor trade sales at current prices

Month	R million				Month-on-month % change			
	2012	2013	2014	2015	2012	2013	2014	2015
Jan	39 504	44 231	46 081	46 131	-1,2	1,5	3,1	-1,2
Feb	40 606	44 092	45 908	45 671	2,8	-0,3	-0,4	-1,0
Mar	40 635	45 310	45 969	47 664	0,1	2,8	0,1	4,4
Apr	41 583	45 361	46 142	45 917	2,3	0,1	0,4	-3,7
May	41 815	45 746	46 252	46 468	0,6	0,8	0,2	1,2
Jun	42 175	44 850	47 303	47 254	0,9	-2,0	2,3	1,7
Jul	41 330	45 947	47 288	47 712	-2,0	2,4	0,0	1,0
Aug	41 494	46 013	47 483	46 316	0,4	0,1	0,4	-2,9
Sep	42 684	44 949	47 466	47 349	2,9	-2,3	0,0	2,2
Oct	43 384	45 799	47 876	46 697	1,6	1,9	0,9	-1,4
Nov	43 593	45 642	46 815	47 472	0,5	-0,3	-2,2	1,7
Dec	43 571	44 715	46 685		-0,1	-2,0	-0,3	

Table 4 – Motor trade sales at current prices by type of activity (R million)

Type of activity	Jun-15	Jul-15	Aug-15	Sep-15	Oct-15	Nov-15 1/
New vehicle sales	14 225	14 857	13 272	14 570	14 138	14 594
Used vehicle sales	8 416	9 706	8 619	8 785	8 991	9 013
Workshop income	3 045	3 167	2 943	3 156	3 266	3 333
Income from the sales of accessories	8 691	9 045	8 526	8 834	9 097	9 234
Income from fuel sales	11 473	11 763	11 293	10 849	11 245	10 912
Income from convenience store sales 2/	1 609	1 635	1 641	1 665	1 757	1 678
Total	47 460	50 172	46 295	47 861	48 494	48 763

1/ Figures are preliminary.

2/ Includes 'other' sales and trading income.

Table 5 – Year-on-year percentage change in motor trade sales at current prices by type of activity

Type of activity	Jun-15	Jul-15	Aug-15	Sep-15	Oct-15	Nov-15
New vehicle sales	5,4	-1,4	-5,3	3,3	-4,0	7,1
Used vehicle sales	0,0	9,4	-0,5	0,3	-4,5	2,2
Workshop income	3,3	-1,4	-2,6	0,8	3,0	10,7
Income from the sales of accessories	10,1	7,9	4,9	6,5	2,1	10,7
Income from fuel sales	-5,0	-5,6	-8,8	-8,7	-9,7	-8,8
Income from convenience store sales 1/	0,9	0,7	1,6	5,1	0,6	-1,3
Total	2,2	1,1	-3,2	0,2	-3,8	2,8

1/ Includes 'other' sales and trading income.

Table 6 – Contribution of each type of activity to the year-on-year percentage change in motor trade sales at current prices

Type of activity	Jun-15	Jul-15	Aug-15	Sep-15	Oct-15	Nov-15
New vehicle sales	1,6	-0,4	-1,6	1,0	-1,2	2,0
Used vehicle sales	0,0	1,7	-0,1	0,1	-0,8	0,4
Workshop income	0,2	-0,1	-0,2	0,1	0,2	0,7
Income from the sales of accessories	1,7	1,3	0,8	1,1	0,4	1,9
Income from fuel sales	-1,3	-1,4	-2,3	-2,2	-2,4	-2,2
Income from convenience store sales 1/	0,0	0,0	0,1	0,2	0,0	0,0
Total	2,2	1,1	-3,2	0,2	-3,8	2,8

1/ Includes 'other' sales and trading income.

Survey information

Introduction	1	Statistics South Africa (Stats SA) conducts a monthly survey covering enterprises in the motor trade industry (see 4 below). This survey is based on a sample drawn from Stats SA's 2015 business sampling frame (BSF) that contains businesses registered at the South African Revenue Service (SARS) for value added tax (VAT). Stats SA continuously updates its BSF, which is linked to the SARS administrative data.
	2	In order to improve timeliness, some information for the latest month had to be estimated due to late response. These estimates will be revised in future statistical releases as soon as information becomes available. Published motor trade sales estimates exclude VAT.
Purpose of the survey	3	The results of the monthly motor trade sales survey are used to compile estimates of the gross domestic product (GDP) and its components, which are used in monitoring the state of the economy and formulation of economic policy. These statistics are also used in the analysis of comparative business and industry performance.
Scope of the survey	4	The survey collects information from a sample of enterprises in South Africa that are predominantly involved in motor trade. These enterprises include: <ul style="list-style-type: none">• motor vehicle dealers, filling stations and workshops;• motor cycle dealers;• spares and accessories;• tyre dealers;• automotive electricians;• radiator repairs;• panel beaters and spray painters;• 'other' specialised motor repair services; and• 'other' motor trade.
Classification	5	The 1993 edition of the <i>Standard Industrial Classification of all Economic Activities</i> (SIC), Fifth Edition, Report No. 09-90-02, was used to classify the statistical units in the survey. The SIC is based on the 1990 <i>International Standard Industrial Classification of all Economic Activities</i> (ISIC) with suitable adaptations for local conditions. Each enterprise is classified to the industry which reflects its predominant activity. Statistics in this publication are presented at SIC group (four digits) level.
Collection rate	6	The preliminary collection rate for the survey on motor trade sales for November 2015 was 76,4%. The improved collection rate for October 2015 was 87,0%.
Statistical unit	7	The statistical unit for which information is compiled and published is the enterprise, defined as a legal unit or a combination of legal units that includes and directly controls all functions necessary to carry out its sales and service activities.
Revised figures	8	Revised figures are mainly due to late submission of data to Stats SA, or respondents reporting revisions or corrections to their figures. Preliminary figures, as indicated in the relevant tables, are subject to change and when revised will not be indicated as such.
Related publications	9	Users may also refer to the following publications available from Stats SA: <ul style="list-style-type: none">• <i>Bulletin of Statistics</i> issued quarterly;• <i>Stats in Brief</i> issued annually; and• <i>South African Statistics</i> issued annually.

- Rounding-off of figures** 10 Where figures have been rounded off, discrepancies may occur between sums of the component items and the totals.
- Historical data** 11 Historical motor trade data are available on the Stats SA website. To access the data electronically, use the following link:
http://www.statssa.gov.za/?page_id=1849
- Past publications** 12 Past motor trade releases are available on the Stats SA website. To access the releases electronically, use the following link:
http://www.statssa.gov.za/?page_id=1866&PPN=P6343.2&SCH=5722

Technical notes

- Survey methodology and design** 1 The survey is conducted monthly. Questionnaires are sent to a sample of 852 enterprises from a population of 10 463 enterprises. Completed questionnaires are required to be returned to Stats SA within 10 days after the end of the reference month. Email, fax and telephone reminders are used to follow up on non-respondents.
- 2 A stratified random sample was drawn in April 2015 from Stats SA’s business sampling frame (BSF) at the SIC four-digit level. Strata were formed using a combination of Standard Industrial Classification and the measure of size classes for enterprises (see point 3 below).

The Neyman optimal allocation formula given below was used to allocate samples to each stratum.

$$n_h = n * (N_h * S_h) / [\sum (N_i * S_i)].$$

Neyman allocation formula not only allocates sample sizes to each stratum but also calculates the relative precision for each stratum as well as the relative precision for all strata. The relative precision for these strata was 4,0%.

- Class limits** 3 Each motor trade classification group (SIC at four digit level) is divided into four size groups. All large enterprises (size group one) are completely enumerated. Simple random sampling is applied to medium and small enterprises (size groups two, three and four). The total value of sales of the large enterprises (size group one) per classification group is added to the weighted totals of size groups two, three and four to reflect the total value of sales.

Measure of size classes (Rand)

Enterprise size	Size group	Lower limits	Upper limits
Very small	4	1 758 065	18 000 000
Small	3	18 000 001	85 500 000
Medium	2	85 500 001	175 500 000
Large	1	175 500 001	

- Sample weighting** 4 For those strata not completely enumerated, the weights to produce estimates are the inverse ratio of the sampling fraction, modified to take account of non-response in the survey. Stratum estimates are calculated and then aggregated with the completely enumerated stratum to form classification group estimates. These procedures are consistent with international best practice.

Seasonal adjustment	5	<p>Seasonally adjusted estimates are generated each month using the X-12-ARIMA Seasonal Adjustment Program developed by the US Bureau of the Census, 1968. Seasonal adjustment is a means of removing the estimated effects of normal seasonal variation from the series so that the effects of other influences on the series can be recognised more clearly. Seasonal adjustment does not aim to remove irregular or non-seasonal influences which may be present in any particular month. Influences that are volatile or unsystematic can still make it difficult to interpret the movement of the series even after adjustment for seasonal variations. Therefore the month-to-month movements of seasonally adjusted estimates may not be reliable indicators of trend behaviour. The X-12-ARIMA procedure for motor trade sales is described in more detail on the Stats SA website at:</p> <p>Click to Download Seasonal adjustment Motor Trade Sales July 2015</p>
Trend cycle	6	<p>The trend is the long-term pattern or movement of a time series. The X-12-ARIMA Seasonal Adjustment Program is used for smoothing seasonally adjusted estimates to estimates of the underlying trend cycle.</p>
Reliability of estimates	7	<p>Data presented in this publication are based on information obtained from a sample and are, therefore, subject to sampling variability; that is, they may differ from the figures that would have been produced if the data had been obtained from all enterprises in the motor trade industry in South Africa. Estimates are subject to sampling and non-sampling errors.</p>
	8	<p>Inaccuracies may occur because of imperfections in reporting by enterprises and errors made in the collection and processing of the data. Inaccuracies of this kind are referred to as non-sampling errors. Every effort is made to minimise non-sampling errors by careful design of questionnaires, testing them in pilot studies, editing reported data and implementing efficient operating procedures. Fluctuations may occur in consecutive months as a result of seasonal and economic factors.</p>
Month-on-month percentage change	9	<p>The month-on-month percentage change in a variable for any given month is the change between that month and the previous month, expressed as a percentage of the latter.</p>
Year-on-year percentage change	10	<p>The year-on-year percentage change in a variable for any given period is the change between that period and the corresponding period of the previous year, expressed as a percentage of the latter.</p>
Contribution (percentage points)	11	<p>The contribution (percentage points) to the year-on-year percentage change is calculated by multiplying the percentage change of each type of activity by its corresponding weight, divided by 100. The weight is the percentage contribution of each type of activity to total motor trade sales in the corresponding period of the previous year.</p>

Glossary

Enterprise

An enterprise is a legal entity or a combination of legal units that includes and directly controls all functions necessary to carry out its sales activities.

Industry

An industry is made up of enterprises engaged in the same or similar kinds of economic activity. Industries are defined in the *System of National Accounts (SNA)* in the same way as in the *Standard Industrial Classification of all Economic Activities (SIC)*, Fifth Edition, Report No. 09-90-02 of January 1993.

Symbols and abbreviations

BSF	Business sampling frame
GDP	Gross domestic product
ISIC	International Standard Industrial Classification
IT	Income tax
Rm	Rand million
SIC	Standard Industrial Classification of all Economic Activities
SARS	South African Revenue Service
Stats SA	Statistics South Africa
VAT	Value added tax

Technical enquiries

Peter Makota

Telephone number: (012) 310 4837
Email: petermak@statssa.gov.za

Keshnee Govender

Telephone number: (012) 310 8423
Email: keshneeg@statssa.gov.za

General information

Stats SA publishes approximately 300 different statistical releases each year. It is not economically viable to produce them in more than one of South Africa's eleven official languages. Since the releases are used extensively, not only locally but also by international economic and social-scientific communities, Stats SA releases are published in English only.

Stats SA has copyright on this publication. Users may apply the information as they wish, provided that they acknowledge Stats SA as the source of the basic data wherever they process, apply, utilise, publish or distribute the data; and also that they specify that the relevant application and analysis (where applicable) result from their own processing of the data.

Advance release calendar

A release calendar is disseminated on www.statssa.gov.za

Stats SA products

A complete set of Stats SA publications is available at the Stats SA Library and the following libraries:

National Library of South Africa, Pretoria Division
National Library of South Africa, Cape Town Division
Natal Society Library, Pietermaritzburg
Library of Parliament, Cape Town
Bloemfontein Public Library
Johannesburg Public Library
Eastern Cape Library Services, King William's Town
Central Regional Library, Polokwane
Central Reference Library, Mbombela
Central Reference Collection, Kimberley
Central Reference Library, Mmabatho

Stats SA also provides a subscription service.

Electronic services

A large range of data is available via online services. For more detail about our electronic services, contact Stats SA's user information service at (012) 310 8600.

You can visit us on the internet at: www.statssa.gov.za

General enquiries

User information services	Telephone number: (012) 310 8600 Email address: info@statssa.gov.za
Orders/subscription services	Telephone number: (012) 310 8044 Email address: magdaj@statssa.gov.za
Postal address	Private Bag X44, Pretoria, 0001

Produced by Stats SA