

Retail trade in motor vehicles and accessories

June 2002

Co-operation between Statistics South Africa (Stats SA), the citizens of the country, the private sector and government institutions is essential for a successful statistical system. Without continued co-operation and goodwill, the timely release of relevant and reliable official statistics will not be possible.

Embargo: 13:00
Date: 29 August 2002

Stats SA publishes approximately three hundred different releases each year. It is not economically viable to produce them in more than one of South Africa's eleven official languages. Since the releases are used extensively, not only locally, but also by international economic and social-scientific communities, Stats SA releases are published in English only.

Key figures regarding motor trading income for the month ended June 2002

Actual estimates			% change	% change
			between	between
	2002		April 2001 to	January 2001 to
	June	June 2001	June 2001	June 2001
		and	and	and
R million		June 2002	April 2002 to	January 2002 to
			June 2002	June 2002
Income from the sales of new vehicles	3 567	8,1	19,7	12,9
Income from the sales of used vehicles	2 451	32,5	34,6	33,1
Workshop income	960	8,1	12,7	11,1
Other trading income	2 039	10,6	12,2	9,8
Total motor trading income	9 017	14,4	20,6	16,7

Seasonally adjusted estimates			% change	% change
			between	between
	2002		January 2002 to	March 2002
	June	May 2002	March 2002	and
		and	and	and
R million		June 2002	April 2002 to	June 2002
			June 2002	
Income from the sales of new vehicles	3 554	-7,7	10,6	
Income from the sales of used vehicles	2 496	-2,0	9,3	
Workshop income	965	-0,7	2,2	
Other trading income	2 010	0,5	4,3	
Total motor trading income	9 025	-3,7	7,9	

Key findings regarding motor trading income for the second quarter of 2002

Total motor trading income increases

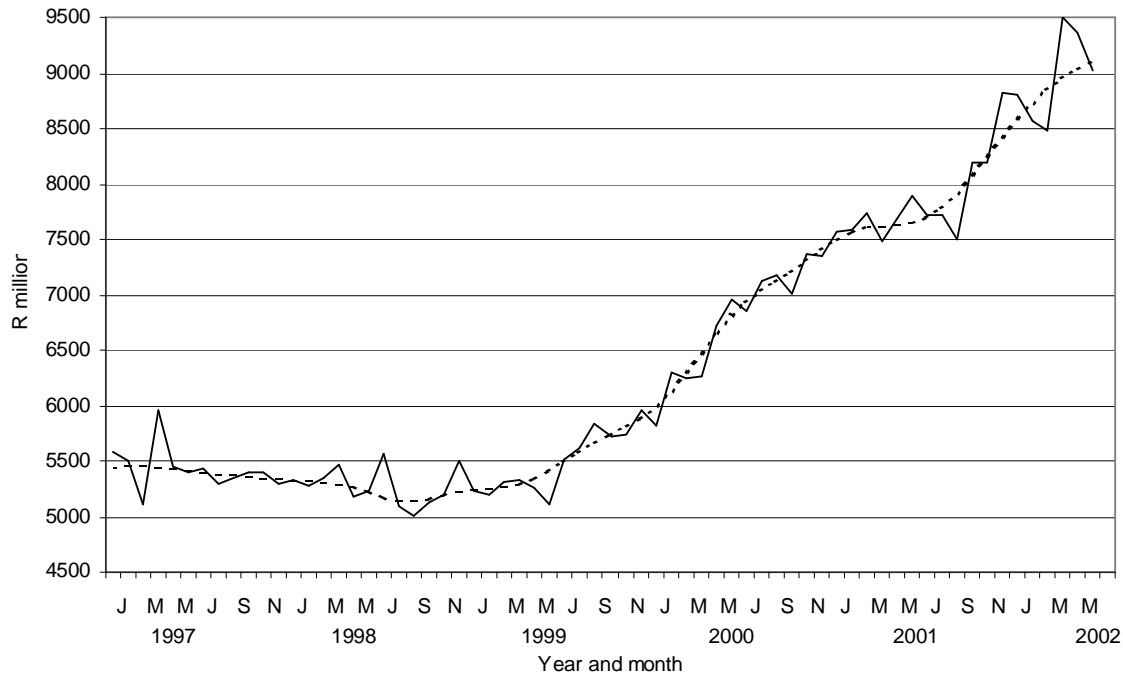
The seasonally adjusted total motor trading income of retailers in motor vehicles and accessories for the second quarter of 2002 increased by 7,9% compared with the previous quarter. However, the seasonally adjusted total motor trading income for June 2002 decreased by 3,7% compared with May 2002.

The increase of 7,9% in the seasonally adjusted total motor trading income for the second quarter of 2002 compared with the previous quarter was due to increases in the seasonally adjusted income from the sales of new vehicles (+10,6%), income from the sales of used vehicles (+9,3%), 'other' trading income (+4,3%) and workshop income (+2,2%).

Key findings regarding motor trading income for the first six months of 2002

Total motor trading income increases

The total motor trading income of retailers in motor vehicles and accessories for the first six months of 2002 increased by 16,7% compared with the first six months of 2001. This increase of 16,7% was due to increases in income from the sales of used vehicles (+33,1%), income from the sales of new vehicles (+12,9%), workshop income (+11,1%) and 'other' trading income (+9,8%).

Figure 1 - Total motor trading income, excluding Value Added Tax

Source: Stats SA

—	Seasonally adjusted	- - - - -	Trend cycle
---	---------------------	-----------	-------------

Key figures regarding the total number of vehicles sold for the month ended June 2002

Actual estimates	2002 June	% change between May 2002 and June 2002		% change between April 2001 to June 2001 and April 2002 to June 2002		% change between January 2001 to June 2001 and January 2002 to June 2002	
Number of new vehicles sold	25 918	-8,4	-10,4	-1,6	-5,5		
Number of used vehicles sold	27 773	-1,3	0,6	4,6	4,4		
Total number of new and used vehicles sold	53 691	-4,9	-5,0	1,5	-0,7		

Key findings regarding the total number of vehicles sold for the month ended June 2002**Total number of vehicles sold decreases**

The total number of new and used vehicles sold during June 2002 decreased by 5,0% compared with June 2001. Furthermore, the total number of new and used vehicles sold during June 2002 decreased by 4,9% compared with May 2002.

The decrease of 5,0% in the total number of new and used vehicles sold during June 2002 compared with June 2001 can be attributed to a decrease of 10,4% in the number of new vehicles sold. This decrease was partially counteracted by an increase of 0,6% in the number of used vehicles sold.

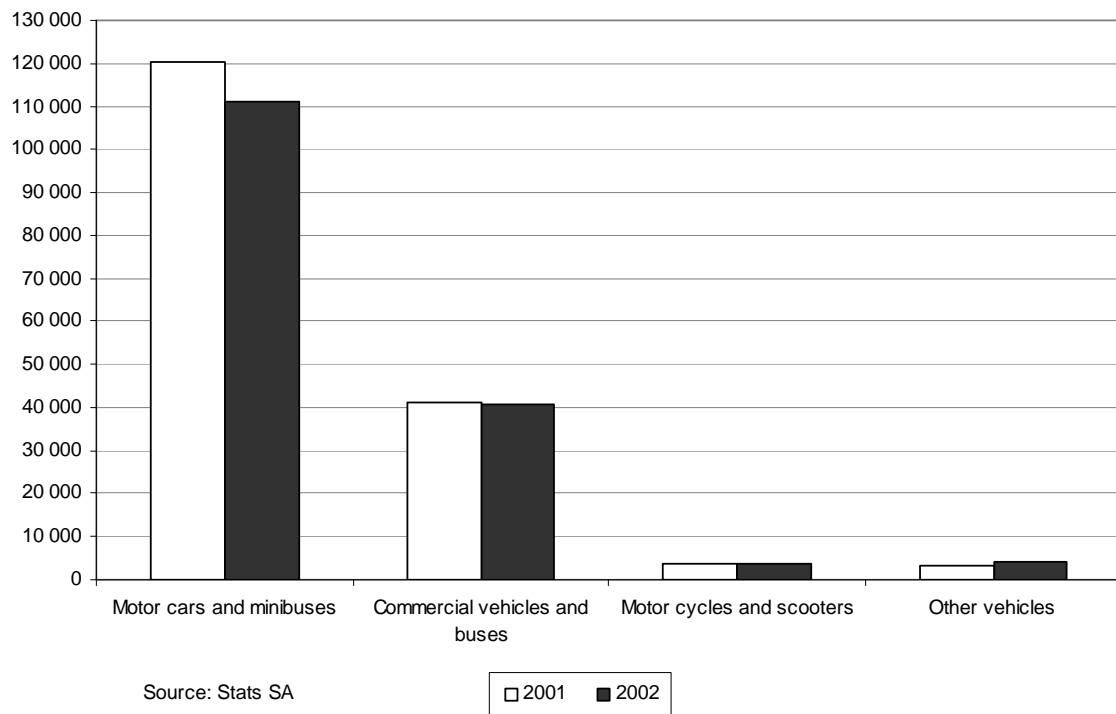
Key findings regarding the total number of vehicles sold for the first six months of 2002

Total number of vehicles sold decreases

The total number of vehicles sold during the first six months of 2002 decreased by 0,7% compared with the first six months of 2001.

The decrease of 0,7% in the total number of vehicles sold was due to a decrease of 5,5% in the number of new vehicles sold. However, this decrease was counteracted by an increase of 4,4% in the total number of used vehicles sold.

Figure 2 – Total number of vehicles sold according to type of vehicle sold during the first six months of 2002 compared with first six months of 2001



Contents

Page

Notes	5
.....	
Tables	
Table 1 Actual values of motor trading income, excluding Value Added Tax, according to type of income (R'000)	8
Table 2 Percentage change in the actual values of motor trading income according to type of income	9
Table 3 Seasonally adjusted values of motor trading income, excluding Value Added Tax, according to type of income (R'000)	10
Table 4 Percentage change in the seasonally adjusted values of motor trading income according to type of income	11
Table 5 Other trading income and cash and credit sale transactions of vehicles, excluding Value Added Tax (R'000)	12
Table 6 Percentage change in the values of other trading income and cash and credit sale transactions of vehicles	13
Table 7 Income from the sales of new and used vehicles, excluding Value Added Tax, according to type of vehicle (R'000)	14
Table 8 Percentage change in the income from the sales of new and used vehicles, excluding Value Added Tax, according to type of vehicle	15
Table 9 Income from the sales of new vehicles, excluding Value Added Tax, according to type of vehicle (R'000)	16
Table 10 Percentage change in the income from the sales of new vehicles, excluding Value Added Tax, according to type of vehicle	17
Table 11 Income from the sales of used vehicles, excluding Value Added Tax, according to type of vehicle (R'000)	18
Table 12 Percentage change in the income from the sales of used vehicles, excluding Value Added Tax, according to type of vehicle	19
Table 13 Total number of new and used vehicles sold according to type of vehicle	20
Table 14 Percentage change in the number of new and used vehicles sold according to type of vehicle	21
Table 15 Number of new vehicles sold according to type of vehicle	22
Table 16 Percentage change in the number of new vehicles sold according to type of vehicle	23
Table 17 Number of used vehicles sold according to type of vehicle	24
Table 18 Percentage change in the number of used vehicles sold according to type of vehicle	25
Additional information	
Explanatory notes	26
Technical note	27
.....	
Glossary	28
.....	
For more information	29
.....	

Notes

Forthcoming issues	Issue	Expected release date
	July 2002	26 September 2002
	August 2002	24 October 2002
	September 2002	21 November 2002
	October 2002	19 December 2002
	November 2002	23 January 2003
	December 2002	20 February 2003
 Purpose of the survey	<p>The retail trade in motor vehicles and accessories survey is a monthly survey covering a sample of private enterprises (firms) operating in the motor trade industry in South Africa. The results of the survey are used to compile estimates of the Gross Domestic Product (GDP) and its components, which are used to develop and monitor government policy. Furthermore, these statistics are also used by the private sector in analyses of comparative business and industry performance.</p>	
 Re-engineered retail trade in motor vehicles and accessories	<p>Prior to January 2000, Stats SA collected and published information on retail trade in motor vehicles and accessories, including Value Added Tax (VAT). Due to users' needs, specifically compilers of National Accounts, Stats SA has overhauled and re-designed the retail trade in motor vehicles and accessories questionnaire. As from January 2000, Stats SA collects information regarding retail trade in motor vehicles and accessories, excluding VAT. In order to provide users with a continuous time series, Stats SA calculated retail trade in motor vehicles and accessories, excluding VAT, for the period January 1992 to December 1999 which was published in the statistical release P6343.3 (entitled Retail trade in motor vehicles and accessories, January 1992 to December 1999) on 18 May 2000.</p>	
 New sample	<p>According to international best practice and in order to train the relevant respondents in using the new questionnaire, to validate the information received and to avoid a break in the time series published in this statistical release, Stats SA decided to introduce the new questionnaire as the first step in the re-engineering process. Stats SA will in due course, as the second step, introduce a new sample.</p> <p>Currently Stats SA is busy re-engineering the register of businesses which serves as the sampling frame, in collaboration with the South African Revenue Service and the Departments of Trade and Industry and Labour. The process will take some time, since there are hundreds of thousands of businesses, many of whom are, in any given period, changing ownership, closing, or being registered. As soon as this improvement in the listing and classification of businesses has been implemented, Stats SA will draw a new sample.</p>	

Changes in the numbering of tables

It should be noted that the numbering of tables changed as from July 2000 as indicated in table A.

Table A - Title of table according to new and old numbers

New number (since July 2000)	Title of table	Old number (prior to May 2000)
Table 1	Actual values of motor trading income, excluding Value Added Tax, according to type of income (R'000)	Table 1
Table 2	Percentage change in the actual values of motor trading income according to type of income	Table 2
Table 3	Seasonally adjusted values of motor trading income, excluding Value Added Tax, according to type of income (R'000)	Table 3
Table 4	Percentage change in the seasonally adjusted values of motor trading income according to type of income	Table 4
Table 5	Other trading income and cash and credit sale transactions of vehicles, excluding Value Added Tax (R'000)	Table 5
Table 6	Percentage change in the values of other trading income and cash and credit sale transactions of vehicles	Table 6
Table 7	Income from the sales of new and used vehicles, excluding Value Added Tax, according to type of vehicle (R'000)	Table 7
Table 8	Percentage change in the income from the sales of new and used vehicles, excluding Value Added Tax, according to type of vehicle	New
Table 9	Income from the sales of new vehicles, excluding Value Added Tax, according to type of vehicle (R'000)	Table 8
Table 10	Percentage change in the income from the sales of new vehicles, excluding Value Added Tax, according to type of vehicle	New
Table 11	Income from the sales of used vehicles, excluding Value Added Tax, according to type of vehicle (R'000)	Table 9
Table 12	Percentage change in the income from the sales of used vehicles, excluding Value Added Tax, according to type of vehicle	New
Table 13	Total number of new and used vehicles sold according to type of vehicle	Table 10
Table 14	Percentage change in the number of new and used vehicles sold according to type of vehicle	New
Table 15	Number of new vehicles sold according to type of vehicle	Table 11
Table 16	Percentage change in the number of new vehicles sold according to type of vehicle	Table 12
Table 17	Number of used vehicles sold according to type of vehicle	Table 13
Table 18	Percentage change in the number of used vehicles sold according to type of vehicle	Table 14

Table 1 - Actual values of motor trading income, excluding Value Added Tax, according to type of income (R'000)

Year and month		Income from the sales of new vehicles	Income from the sales of used vehicles	Workshop income	Other trading Income	Total motor trading income
2000	Jan	2 058 959	1 290 841	742 701	1 451 141	5 543 642
	Feb	2 488 110	1 455 940	865 377	1 594 588	6 404 015
	Mar	2 582 651	1 380 169	820 381	1 569 285	6 352 486
	Apr	2 379 951	1 254 378	784 292	1 510 126	5 928 747
	May	2 790 616	1 406 265	863 617	1 699 218	6 759 716
	Jun	2 832 640	1 512 794	898 868	1 702 566	6 946 868
	Jul	2 896 738	1 578 268	859 195	1 703 913	7 038 114
	Aug	2 948 868	1 730 360	905 347	1 762 579	7 347 154
	Sep	2 917 187	1 650 792	875 382	1 722 743	7 166 104
	Oct	2 838 360	1 663 288	891 929	1 781 587	7 175 164
	Nov	2 940 836	1 809 703	910 237	1 859 006	7 519 782
	Dec	2 958 820	1 602 612	787 778	1 702 967	7 052 177
	Total	32 633 736	18 335 410	10 205 104	20 059 719	81 233 969
2001	Jan	2 918 943	1 700 807	835 784	1 747 188	7 202 722
	Feb	3 289 202	1 731 904	912 281	1 783 565	7 716 952
	Mar	3 450 131	1 759 419	928 640	1 756 789	7 894 979
	Apr	2 867 901	1 635 196	810 200	1 737 986	7 051 283
	May	3 035 816	1 897 990	934 221	1 869 218	7 737 245
	Jun	3 300 450	1 849 284	888 122	1 842 999	7 880 855
	Jul	3 149 898	2 015 770	896 794	1 873 924	7 936 386
	Aug	3 140 369	2 049 533	905 058	1 870 111	7 965 071
	Sep	2 988 180	1 899 299	845 363	1 760 695	7 493 537
	Oct	3 295 763	2 248 440	960 468	1 889 234	8 393 905
	Nov	3 396 440	2 048 822	992 223	1 911 238	8 348 723
	Dec	3 856 672	2 032 199	813 765	1 795 806	8 498 442
	Total	38 689 765	22 868 663	10 722 919	21 838 753	94 120 100
2002	Jan	3 320 574	2 218 786	981 070	1 863 494	8 383 924
	Feb	3 563 277	2 223 508	1 006 713	1 911 990	8 705 488
	Mar	3 391 331	2 386 829	945 004	1 901 278	8 624 442
	Apr	3 558 341	2 310 584	1 001 781	2 011 580	8 882 286
	May	3 892 299	2 484 965 *	1 004 935 *	2 065 989 *	9 448 188 *
	Jun	3 566 716	2 450 973	960 194	2 038 700	9 016 583

* Revised.

Table 2 - Percentage change in the actual values of motor trading income according to type of income

Year ^{1/} and month ^{2/}		Income from the sales of new vehicles	Income from the sales of used vehicles	Workshop income	Other trading Income	Total motor trading income
2000	Jan	10,6	28,9	6,8	2,6	11,5
	Feb	23,3	31,9	17,4	10,9	20,9
	Mar	24,9	22,5	13,2	8,0	18,3
	Apr	27,1	19,7	12,8	3,7	16,9
	May	40,7	30,1	19,7	14,0	28,1
	Jun	50,3	41,1	30,0	17,2	36,2
	Jul	31,6	20,4	21,0	17,3	24,0
	Aug	35,2	26,3	19,6	19,6	27,1
	Sep	31,4	23,5	17,0	13,7	23,2
	Oct	26,8	20,6	16,5	18,1	21,8
	Nov	34,2	34,1	16,0	20,4	28,1
	Dec	33,3	23,4	10,1	15,6	23,6
	Total	30,9	26,7	16,7	13,5	23,4
2001	Jan	41,8	31,8	12,5	20,4	29,9
	Feb	32,2	19,0	5,4	11,9	20,5
	Mar	33,6	27,5	13,2	11,9	24,3
	Apr	20,5	30,4	3,3	15,1	18,9
	May	8,8	35,0	8,2	10,0	14,5
	Jun	16,5	22,2	-1,2	8,2	13,4
	Jul	8,7	27,7	4,4	10,0	12,8
	Aug	6,5	18,4	0,0	6,1	8,4
	Sep	2,4	15,1	-3,4	2,2	4,6
	Oct	16,1	35,2	7,7	6,0	17,0
	Nov	15,5	13,2	9,0	2,8	11,0
	Dec	30,3	26,8	3,3	5,5	20,5
	Total	18,6	24,7	5,1	8,9	15,9
2002	Jan	13,8	30,5	17,4	6,7	16,4
	Feb	8,3	28,4	10,4	7,2	12,8
	Mar	-1,7	35,7	1,8	8,2	9,2
	Apr	24,1	41,3	23,6	15,7	26,0
	May	28,2	30,9 *	7,6 *	10,5	22,1
	Jun	8,1	32,5	8,1	10,6	14,4

1/ The percentage change is the change in the actual values of motor trading income of the relevant year compared with the actual values of motor trading income of the previous year expressed as a percentage.

2/ The percentage change is the change in the actual values of the motor trading income of the relevant month compared with the actual values of the motor trading income of the same month in the previous year expressed as a percentage.

Table 3 - Seasonally adjusted values of motor trading income, excluding Value Added Tax, according to type of income (R'000)

Year and month		Income from the sales of new vehicles	Income from the sales of used vehicles	Workshop income	Other trading Income	Total motor trading income
2000	Jan	2 188 066	1 353 135	779 495	1 507 144	5 827 840
	Feb	2 404 702	1 446 107	820 483	1 619 648	6 290 940
	Mar	2 428 921	1 402 421	816 250	1 600 769	6 248 361
	Apr	2 534 605	1 375 724	820 234	1 534 329	6 264 892
	May	2 775 923	1 454 711	843 156	1 650 200	6 723 990
	Jun	2 828 960	1 532 889	907 767	1 682 486	6 952 102
	Jul	2 788 352	1 521 615	859 163	1 679 880	6 849 010
	Aug	2 893 517	1 625 447	879 762	1 732 100	7 130 826
	Sep	2 914 937	1 642 320	883 518	1 738 390	7 179 165
	Oct	2 851 774	1 544 189	865 160	1 743 880	7 005 003
	Nov	2 975 869	1 717 123	871 726	1 798 916	7 363 634
	Dec	3 033 619	1 686 734	855 945	1 764 823	7 341 121
2001	Jan	3 106 001	1 771 944	877 444	1 813 348	7 568 737
	Feb	3 181 232	1 732 618	863 452	1 809 239	7 586 541
	Mar	3 235 164	1 783 928	926 350	1 791 343	7 736 785
	Apr	3 070 474	1 802 271	849 290	1 768 319	7 490 354
	May	3 009 440	1 955 291	906 930	1 811 111	7 682 772
	Jun	3 291 935	1 880 433	894 358	1 816 669	7 883 395
	Jul	3 041 897	1 937 083	899 057	1 848 399	7 726 436
	Aug	3 083 089	1 915 547	878 962	1 836 589	7 714 187
	Sep	2 977 742	1 886 668	854 479	1 778 487	7 497 376
	Oct	3 325 903	2 086 883	932 298	1 852 926	8 198 010
	Nov	3 439 394	1 959 595	949 754	1 848 774	8 197 517
	Dec	3 939 500	2 137 134	885 740	1 863 989	8 826 363
2002	Jan	3 540 992	2 299 409	1 028 894	1 932 660	8 801 955
	Feb	3 439 206	2 232 673	952 843	1 937 669	8 562 391
	Mar	3 175 858	2 422 841	943 942	1 938 922	8 481 563
	Apr	3 829 232	2 559 100	1 053 275	2 050 736	9 492 343
	May	3 852 588	2 546 852	972 412	1 999 748	9 371 600
	Jun	3 554 151	2 496 030	965 293	2 009 850	9 025 324

Table 4 - Percentage change in the seasonally adjusted values of motor trading income according to type of income

Year ^{1/} and month ^{2/}		Income from the sales of new vehicles	Income from the sales of used vehicles	Workshop income	Other trading Income	Total motor trading income
2000	Jan	-4,8	-1,3	0,4	-0,9	-2,3
	Feb	9,9	6,9	5,3	7,5	7,9
	Mar	1,0	-3,0	-0,5	-1,2	-0,7
	Apr	4,4	-1,9	0,5	-4,2	0,3
	May	9,5	5,7	2,8	7,6	7,3
	Jun	1,9	5,4	7,7	2,0	3,4
	Jul	-1,4	-0,7	-5,4	-0,2	-1,5
	Aug	3,8	6,8	2,4	3,1	4,1
	Sep	0,7	1,0	0,4	0,4	0,7
	Oct	-2,2	-6,0	-2,1	0,3	-2,4
	Nov	4,4	11,2	0,8	3,2	5,1
	Dec	1,9	-1,8	-1,8	-1,9	-0,3
2001	Jan	2,4	5,1	2,5	2,7	3,1
	Feb	2,4	-2,2	-1,6	-0,2	0,2
	Mar	1,7	3,0	7,3	-1,0	2,0
	Apr	-5,1	1,0	-8,3	-1,3	-3,2
	May	-2,0	8,5	6,8	2,4	2,6
	Jun	9,4	-3,8	-1,4	0,3	2,6
	Jul	-7,6	3,0	0,5	1,7	-2,0
	Aug	1,4	-1,1	-2,2	-0,6	-0,2
	Sep	-3,4	-1,5	-2,8	-3,2	-2,8
	Oct	11,7	10,6	9,1	4,2	9,3
	Nov	3,4	-6,1	1,9	-0,2	0,0
	Dec	14,5	9,1	-6,7	0,8	7,7
2002	Jan	-10,1	7,6	16,2	3,7	-0,3
	Feb	-2,9	-2,9	-7,4	0,3	-2,7
	Mar	-7,7	8,5	-0,9	0,1	-0,9
	Apr	20,6	5,6	11,6	5,8	11,9
	May	0,6	-0,5	-7,7	-2,5	-1,3
	Jun	-7,7	-2,0	-0,7	0,5	-3,7

1/ The percentage change is the change in the seasonally adjusted values of the motor trading income of the relevant month compared with the seasonally adjusted values of the motor trading income of the previous month expressed as a percentage.

Table 5 - Other trading income and cash and credit sale transactions of vehicles, excluding Value Added Tax (R'000)

		Other trading income				Total cash and credit sale transactions of vehicles	
Year and month		Sales of spares and accessories	Miscellaneous	Total other trading income			
2000	Jan	708 574	742 567	1 451 141		3 349 800	
	Feb	784 950	809 637	1 594 588		3 944 050	
	Mar	760 044	809 241	1 569 285		3 962 821	
	Apr	712 483	797 642	1 510 126		3 634 329	
	May	849 947	849 271	1 699 218		4 196 880	
	Jun	846 488	856 078	1 702 566		4 345 433	
	Jul	839 196	864 717	1 703 913		4 475 006	
	Aug	865 724	896 855	1 762 579		4 679 228	
	Sep	813 309	909 434	1 722 743		4 567 979	
	Oct	834 604	946 983	1 781 587		4 501 648	
	Nov	875 951	983 055	1 859 006		4 750 540	
	Dec	750 226	952 741	1 702 967		4 561 432	
	Total	9 641 496	10 418 221	20 059 719		50 969 146	
2001	Jan	810 426	936 762	1 747 188		4 619 750	
	Feb	845 737	937 828	1 783 565		5 021 106	
	Mar	836 725	920 064	1 756 789		5 209 550	
	Apr	792 267	945 719	1 737 986		4 503 097	
	May	889 893	979 325	1 869 218		4 933 807	
	Jun	851 780	991 219	1 842 999		5 149 734	
	Jul	875 391	998 533	1 873 924		5 165 667	
	Aug	893 260	976 851	1 870 111		5 189 902	
	Sep	840 883	919 812	1 760 695		4 887 479	
	Oct	937 661	951 573	1 889 234		5 544 203	
	Nov	949 188	962 050	1 911 238		5 445 261	
	Dec	853 922	941 884	1 795 806		5 888 870	
	Total	10 377 133	11 461 620	21 838 753		61 558 426	
2002	Jan	968 363	895 131	1 863 494		5 539 360	
	Feb	1 006 438	905 552	1 911 990		5 786 785	
	Mar	1 004 589	896 689	1 901 278		5 778 159	
	Apr	1 020 941	990 638	2 011 580		5 868 925	
	May	1 068 007 *	997 982 *	2 065 989 *		6 373 593	
	Jun	1 036 066	1 002 635	2 038 700		6 017 689	

* Revised.

Table 6 - Percentage change in the values of other trading income and cash and credit sale transactions of vehicles

		Other trading income				Total cash and credit sale transactions of vehicles
Year and month		Sales of spares and accessories	Miscellaneous	Total other trading income		
2000	Jan	-7,3	14,2	2,6	17,0	
	Feb	-0,1	24,1	10,9	26,3	
	Mar	-6,4	26,4	8,0	24,1	
	Apr	-4,6	12,4	3,7	24,5	
	May	5,4	24,1	14,0	37,0	
	Jun	11,7	23,2	17,2	46,9	
	Jul	5,4	31,7	17,3	27,4	
	Aug	11,1	29,2	19,6	31,8	
	Sep	-1,3	31,7	13,7	28,5	
	Oct	7,3	29,5	18,1	24,4	
	Nov	9,2	32,5	20,4	34,2	
	Dec	2,2	29,0	15,6	29,7	
	Total		2,7	25,8	13,5	29,3
2001	Jan	14,4	26,2	20,4	37,9	
	Feb	7,7	15,8	11,9	27,3	
	Mar	10,1	13,7	11,9	31,5	
	Apr	11,2	18,6	15,1	23,9	
	May	4,7	15,3	10,0	17,6	
	Jun	0,6	15,8	8,2	18,5	
	Jul	4,3	15,5	10,0	15,4	
	Aug	3,2	8,9	6,1	10,9	
	Sep	3,4	1,1	2,2	7,0	
	Oct	12,3	0,5	6,0	23,2	
	Nov	8,4	-2,1	2,8	14,6	
	Dec	13,8	-1,1	5,5	29,1	
	Total		7,6	10,0	8,9	20,8
2002	Jan	19,5	-4,4	6,7	19,9	
	Feb	19,0	-3,4	7,2	15,2	
	Mar	20,1	-2,5	8,2	10,9	
	Apr	28,9	4,7	15,7	30,3	
	May	20,0 *	1,9 *	10,5	29,2	
	Jun	21,6	1,2	10,6	16,9	

1/ The percentage change is the change in the actual values of motor trading income of the relevant year compared with the actual values of motor trading income of the previous year expressed as a percentage.

2/ The percentage change is the change in the actual values of the motor trading income of the relevant month compared with the actual values of the motor trading income of the same month in the previous year expressed as a percentage.

Table 7 - Income from the sales of new and used vehicles, excluding Value Added Tax, according to type of vehicle (R'000)

Year and month		Motor cars and minibuses	Commercial vehicles and buses	Motor cycles and scooters	Other new and used vehicles	Total income from the sales of new and used vehicles
2000	Jan	2 423 489	881 025	20 899	24 387	3 349 800
	Feb	2 759 660	1 138 405	21 249	24 735	3 944 050
	Mar	2 885 117	1 046 454	14 133	17 117	3 962 820
	Apr	2 669 863	928 275	17 664	18 526	3 634 329
	May	3 046 609	1 113 234	20 492	16 545	4 196 881
	Jun	3 126 614	1 181 638	20 861	16 319	4 345 434
	Jul	3 261 501	1 180 684	17 901	14 921	4 475 006
	Aug	3 377 170	1 264 997	17 530	19 530	4 679 228
	Sep	3 306 438	1 223 339	17 725	20 477	4 567 979
	Oct	3 250 142	1 214 311	15 459	21 736	4 501 648
	Nov	3 486 151	1 215 416	23 687	25 286	4 750 539
	Dec	3 391 355	1 123 798	22 202	24 078	4 561 432
	Total	36 984 109	13 511 576	229 802	243 657	50 969 146
2001	Jan	3 566 543	1 011 742	19 598	21 867	4 619 750
	Feb	3 736 996	1 244 856	16 719	22 534	5 021 106
	Mar	3 846 843	1 323 746	16 834	22 126	5 209 550
	Apr	3 398 639	1 069 875	14 293	20 289	4 503 097
	May	3 728 889	1 170 123	17 103	17 691	4 933 806
	Jun	3 826 021	1 287 283	16 245	20 185	5 149 734
	Jul	3 873 052	1 244 429	18 252	29 934	5 165 668
	Aug	3 910 224	1 236 346	19 649	23 684	5 189 902
	Sep	3 646 461	1 183 907	15 797	41 314	4 887 479
	Oct	4 093 013	1 375 982	24 956	50 252	5 544 203
	Nov	4 006 352	1 378 432	23 429	37 048	5 445 262
	Dec	4 493 388	1 343 793	20 619	31 070	5 888 871
	Total	46 126 421	14 870 514	223 494	337 994	61 558 428
2002	Jan	4 236 057	1 249 226	22 812	31 265	5 539 360
	Feb	4 447 179	1 292 329	19 681	27 597	5 786 785
	Mar	4 495 122	1 225 550	24 493	32 994	5 778 160
	Apr	4 447 411	1 370 240	20 887	30 387	5 868 925
	May	4 824 813	1 507 846	16 619	27 985	6 377 264
	Jun	4 604 266	1 371 535	15 022	26 865	6 017 689

* Revised.

Table 8 - Percentage change in the income from the sales of new and used vehicles, excluding Value Added Tax, according to type of vehicle

Year ^{1/} and month ^{2/}		Motor cars and minibuses	Commercial vehicles and buses	Motor cycles and scooters	Other new and used vehicles	Total income from the sales of new and used vehicles
2000	Jan	16,4	18,5	-5,9	62,6	17,0
	Feb	22,2	37,8	24,0	21,6	26,3
	Mar	25,4	22,1	-19,8	-7,8	24,1
	Apr	24,8	23,9	21,6	15,2	24,5
	May	35,3	42,7	44,8	-7,8	37,0
	Jun	46,8	51,0	-10,8	-24,4	46,9
	Jul	27,6	29,0	-15,1	-23,6	27,4
	Aug	30,1	38,3	-21,3	3,7	31,8
	Sep	29,4	26,6	6,5	18,4	28,5
	Oct	18,2	47,2	-10,7	-17,1	24,4
	Nov	29,3	51,5	32,9	6,3	34,2
	Dec	27,2	37,4	16,0	69,8	29,7
	Total	27,6	35,4	2,9	6,2	29,3
2001	Jan	47,2	14,8	-6,2	-10,3	37,9
	Feb	35,4	9,4	-21,3	-8,9	27,3
	Mar	33,3	26,5	19,1	29,3	31,5
	Apr	27,3	15,3	-19,1	9,5	23,9
	May	22,4	5,1	-16,5	6,9	17,6
	Jun	22,4	8,9	-22,1	23,7	18,5
	Jul	18,8	5,4	2,0	100,6	15,4
	Aug	15,8	-2,3	12,1	21,3	10,9
	Sep	10,3	-3,2	-10,9	101,8	7,0
	Oct	25,9	13,3	61,4	131,2	23,2
	Nov	14,9	13,4	-1,1	46,5	14,6
	Dec	32,5	19,6	-7,1	29,0	29,1
	Total	24,7	10,1	-2,7	38,7	20,8
2002	Jan	18,8	23,5	16,4	43,0	19,9
	Feb	19,0	3,8	17,7	22,5	15,2
	Mar	16,9	-7,4	45,5	49,1	10,9
	Apr	30,9	28,1	46,1	49,8	30,3
	May	29,4	28,9 *	-2,8	58,2	29,3 *
	Jun	20,3	6,5	-7,5	33,1	16,9

1/ The percentage change is the change in the actual values of motor trading income of the relevant year compared with the actual values of motor trading income of the previous year expressed as a percentage.

2/ The percentage change is the change in the actual values of the motor trading income of the relevant month compared with the actual values of the motor trading income of the same month in the previous year expressed as a percentage.

* Revised.

Table 9 - Income from the sales of new vehicles, excluding Value Added Tax, according to type of vehicle (R'000)

Year and month		Motor cars and minibuses	Commercial vehicles and buses	Motor cycles and scooters	Other new vehicles	Total income from the sales of new vehicles
2000	Jan	1 355 434	663 558	19 087	20 879	2 058 959
	Feb	1 644 221	804 117	18 485	21 287	2 488 110
	Mar	1 759 945	796 821	12 940	12 946	2 582 651
	Apr	1 622 741	728 158	15 903	13 149	2 379 951
	May	1 895 860	863 225	19 194	12 337	2 790 616
	Jun	1 882 047	918 190	19 037	13 365	2 832 640
	Jul	1 931 416	935 947	17 185	12 190	2 896 738
	Aug	1 944 982	972 987	16 372	14 527	2 948 868
	Sep	1 919 172	966 101	16 848	15 066	2 917 187
	Oct	1 861 188	944 942	14 606	17 624	2 838 360
	Nov	1 966 328	930 690	22 604	21 215	2 940 836
	Dec	2 040 584	877 070	20 849	20 317	2 958 820
	Total	21 823 918	10 401 806	213 110	194 902	32 633 736
2001	Jan	2 109 878	772 508	18 916	17 641	2 918 943
	Feb	2 264 644	990 840	15 976	17 742	3 289 202
	Mar	2 368 530	1 047 645	15 910	18 045	3 450 131
	Apr	2 010 688	827 741	13 460	16 012	2 867 901
	May	2 109 348	896 775	16 514	13 179	3 035 816
	Jun	2 224 955	1 044 485	15 333	15 678	3 300 450
	Jul	2 189 330	920 537	17 194	22 837	3 149 898
	Aug	2 181 638	921 713	18 522	18 497	3 140 369
	Sep	2 036 491	901 066	15 126	35 497	2 988 180
	Oct	2 181 554	1 045 792	23 685	44 732	3 295 763
	Nov	2 280 995	1 061 290	22 814	31 340	3 396 440
	Dec	2 756 403	1 054 893	19 973	25 403	3 856 672
	Total	26 714 454	11 485 285	213 423	276 603	38 689 765
2002	Jan	2 334 430	939 677	22 161	24 306	3 320 574
	Feb	2 531 379	991 930	19 106	20 862	3 563 277
	Mar	2 473 531	869 906	23 892	24 001	3 391 331
	Apr	2 457 142	1 059 165	20 317	21 717	3 558 341
	May	2 686 409	1 168 755	15 647	21 488	3 892 299
	Jun	2 509 760	1 021 003	14 541	21 411	3 566 716

Table 10 - Percentage change in the income from the sales of new vehicles, excluding Value Added Tax, according to type of vehicle

Year ^{1/} and month ^{2/}		Motor cars and minibuses	Commercial vehicles and buses	Motor cycles and scooters	Other new vehicles	Total income from the sales of new vehicles
2000	Jan	6,3	19,8	-8,2	77,4	10,6
	Feb	19,7	31,4	14,6	28,4	23,3
	Mar	26,5	23,5	-19,0	-17,0	24,9
	Apr	25,6	31,5	20,9	0,6	27,1
	May	38,1	48,4	48,6	-18,0	40,7
	Jun	48,3	59,4	-12,3	-26,4	50,3
	Jul	27,9	42,9	-13,7	-22,9	31,6
	Aug	29,6	51,0	-18,7	-5,8	35,2
	Sep	30,7	33,8	8,7	5,9	31,4
	Oct	15,8	58,5	3,9	-20,5	26,8
	Nov	26,5	54,5	51,0	7,1	34,2
	Dec	29,2	43,4	24,9	74,4	33,3
	Total	26,9	41,4	5,5	3,0	30,9
2001	Jan	55,7	16,4	-0,9	-15,5	41,8
	Feb	37,7	23,2	-13,6	-16,7	32,2
	Mar	34,6	31,5	23,0	39,4	33,6
	Apr	23,9	13,7	-15,4	21,8	20,5
	May	11,3	3,9	-14,0	6,8	8,8
	Jun	18,2	13,8	-19,5	17,3	16,5
	Jul	13,4	-1,6	0,1	87,3	8,7
	Aug	12,2	-5,3	13,1	27,3	6,5
	Sep	6,1	-6,7	-10,2	135,6	2,4
	Oct	17,2	10,7	62,2	153,8	16,1
	Nov	16,0	14,0	0,9	47,7	15,5
	Dec	35,1	20,3	-4,2	25,0	30,3
	Total	22,4	10,4	0,1	41,9	18,6
2002	Jan	10,6	21,6	17,2	37,8	13,8
	Feb	11,8	0,1	19,6	17,6	8,3
	Mar	4,4	-17,0	50,2	33,0	-1,7
	Apr	22,2	28,0	50,9	35,6	24,1
	May	27,4	30,3	-5,3	63,0	28,2
	Jun	12,8	-2,2	-5,2	36,6	8,1

1/ The percentage change is the change in the actual values of motor trading income of the relevant year compared with the actual values of motor trading income of the previous year expressed as a percentage.

2/ The percentage change is the change in the actual values of the motor trading income of the relevant month compared with the actual values of the motor trading income of the same month in the previous year expressed as a percentage.

Table 11 - Income from the sales of used vehicles, excluding Value Added Tax, according to type of vehicle (R'000)

Year and month		Motor cars and minibuses	Commercial vehicles and buses	Motor cycles and scooters	Other used vehicles	Total income from the sales of used vehicles
2000	Jan	1 068 055	217 467	1 812	3 508	1 290 841
	Feb	1 115 439	334 288	2 764	3 448	1 455 940
	Mar	1 125 172	249 633	1 193	4 171	1 380 169
	Apr	1 047 122	200 117	1 761	5 377	1 254 378
	May	1 150 749	250 009	1 298	4 208	1 406 265
	Jun	1 244 567	263 448	1 824	2 954	1 512 794
	Jul	1 330 085	244 737	716	2 731	1 578 268
	Aug	1 432 188	292 010	1 158	5 003	1 730 360
	Sep	1 387 266	257 238	877	5 411	1 650 792
	Oct	1 388 954	269 369	853	4 112	1 663 288
	Nov	1 519 823	284 726	1 083	4 071	1 809 703
	Dec	1 350 771	246 728	1 353	3 761	1 602 612
	Total	15 160 191	3 109 770	16 692	48 755	18 335 410
2001	Jan	1 456 665	239 234	682	4 226	1 700 807
	Feb	1 472 352	254 016	743	4 792	1 731 904
	Mar	1 478 313	276 101	924	4 081	1 759 419
	Apr	1 387 951	242 134	833	4 277	1 635 196
	May	1 619 541	273 348	589	4 512	1 897 990
	Jun	1 601 066	242 798	912	4 507	1 849 284
	Jul	1 683 722	323 892	1 058	7 097	2 015 770
	Aug	1 728 586	314 633	1 127	5 187	2 049 533
	Sep	1 609 970	282 841	671	5 817	1 899 299
	Oct	1 911 459	330 190	1 271	5 520	2 248 440
	Nov	1 725 357	317 142	615	5 708	2 048 822
	Dec	1 736 985	288 900	646	5 667	2 032 199
	Total	19 411 967	3 385 229	10 071	61 391	22 868 663
2002	Jan	1 901 627	309 549	651	6 959	2 218 786
	Feb	1 915 800	300 399	575	6 735	2 223 508
	Mar	2 021 591	355 644	601	8 993	2 386 829
	Apr	1 990 269	311 075	570	8 670	2 310 584
	May	2 138 404	339 091	972	6 497	2 484 965
	Jun	2 094 506	350 532	481	5 454	2 450 973

* Revised.

Table 12 - Percentage change in the income from the sales of used vehicles, excluding Value Added Tax, according to type of vehicle

Year ^{1/} and month ^{2/}		Motor cars and minibuses	Commercial vehicles and buses	Motor cycles and scooters	Other used vehicles	Total income from the sales of used vehicles
2000	Jan	32,4	14,5	27,8	8,6	28,9
	Feb	26,1	56,0	175,3	-8,2	31,9
	Mar	23,6	17,9	-27,3	39,9	22,5
	Apr	23,5	2,5	28,8	78,6	19,7
	May	31,0	26,1	5,4	44,8	30,1
	Jun	44,7	27,6	8,1	-14,2	41,1
	Jul	27,1	-5,9	-39,1	-26,9	20,4
	Aug	30,8	8,2	-45,9	46,9	26,3
	Sep	27,5	5,3	-22,6	76,7	23,5
	Oct	21,5	17,6	-73,7	1,4	20,6
	Nov	33,0	42,4	-62,1	2,0	34,1
	Dec	24,3	19,6	-44,9	48,7	23,4
	Total	28,6	18,4	-21,8	21,6	26,7
2001	Jan	36,4	10,0	-62,4	20,5	31,8
	Feb	32,0	-24,0	-73,1	39,0	19,0
	Mar	31,4	10,6	-22,5	-2,2	27,5
	Apr	32,5	21,0	-52,7	-20,5	30,4
	May	40,7	9,3	-54,6	7,2	35,0
	Jun	28,6	-7,8	-50,0	52,6	22,2
	Jul	26,6	32,3	47,8	159,9	27,7
	Aug	20,7	7,7	-2,7	3,7	18,4
	Sep	16,1	10,0	-23,5	7,5	15,1
	Oct	37,6	22,6	49,0	34,2	35,2
	Nov	13,5	11,4	-43,2	40,2	13,2
	Dec	28,6	17,1	-52,3	50,7	26,8
	Total	28,0	8,9	-39,7	25,9	24,7
2002	Jan	30,5	29,4	-4,5	64,7	30,5
	Feb	30,1	18,3	-22,6	40,5	28,4
	Mar	36,7	28,8	-35,0	120,4	35,7
	Apr	43,4	28,5	-31,6	102,7	41,3
	May	32,0	24,1 *	65,0	44,0	30,9 *
	Jun	30,8	44,4	-47,3	21,0	32,5

^{1/} The percentage change is the change in the actual values of motor trading income of the relevant year compared with the actual values of motor trading income of the previous year expressed as a percentage.

^{2/} The percentage change is the change in the actual values of the motor trading income of the relevant month compared with the actual values of the motor trading income of the same month in the previous year expressed as a percentage.

* Revised.

Table 13 - Total number of new and used vehicles sold according to type of vehicle

Year and month		Motor cars and minibuses	Commercial vehicles and buses	Motor cycles and scooters	Other new and used vehicles	Total number of new and used vehicles sold
2000	Jan	35 646	10 290	1 147	1 551	48 636
	Feb	38 260	11 958	1 023	1 512	52 754
	Mar	40 773	11 192	790	1 381	54 137
	Apr	35 702	8 999	868	991	46 560
	May	41 462	10 611	961	815	53 849
	Jun	41 991	11 327	966	936	55 222
	Jul	42 160	11 111	777	727	54 775
	Aug	43 842	11 757	826	847	57 271
	Sep	42 791	10 905	820	921	55 437
	Oct	42 047	11 853	805	1 243	55 949
	Nov	43 656	11 149	941	912	56 659
	Dec	40 668	10 317	867	916	52 767
	Total		488 998	131 469	10 791	12 752
2001	Jan	42 497	9 607	803	895	53 803
	Feb	44 813	10 709	758	542	56 823
	Mar	44 177	11 385	675	786	57 024
	Apr	39 594	9 367	577	666	50 203
	May	42 278	10 106	700	576	53 661
	Jun	43 592	11 676	643	604	56 515
	Jul	44 050	11 471	661	593	56 775
	Aug	44 340	11 212	712	722	56 986
	Sep	41 226	10 072	668	1 027	52 994
	Oct	45 403	11 597	980	1 166	59 145
	Nov	43 663	11 208	1 009	1 467	57 348
	Dec	45 155	10 640	765	1 296	57 855
	Total		520 788	129 050	8 951	10 340
2002	Jan	44 444	10 480	773	1 291	56 987
	Feb	43 676	10 480	621	764	55 541
	Mar	39 239	9 676	684	990	50 589
	Apr	40 594	10 525	716	740	52 576
	May	43 822	11 399 *	554	678	56 452 *
	Jun	41 987	10 638	551	515	53 691

* Revised.

Table 14 - Percentage change in the number of new and used vehicles sold according to type of vehicle

Year ^{1/} and month ^{2/}		Motor cars and minibuses	Commercial vehicles and buses	Motor cycles and scooters	Other new and used vehicles	Total number of new and used vehicles sold
2000	Jan	0,7	-0,6	-12,0	52,5	1,2
	Feb	3,1	12,6	3,5	29,6	5,8
	Mar	5,0	2,5	-22,9	12,3	4,1
	Apr	0,8	-9,1	-12,0	-13,3	-1,8
	May	13,0	0,5	3,1	-27,9	9,2
	Jun	19,9	9,5	-35,7	-23,2	14,9
	Jul	1,4	-8,5	-43,1	56,0	-1,4
	Aug	3,1	2,6	-49,3	23,6	1,7
	Sep	5,0	-14,4	-51,1	-17,7	-1,5
	Oct	0,5	13,4	-14,7	-21,5	2,1
	Nov	7,3	12,7	-5,9	-33,7	7,0
	Dec	1,1	2,5	-14,5	-28,0	0,3
	Total	4,9	1,6	-24,9	-4,9	3,3
2001	Jan	19,2	-6,6	-30,0	-42,3	10,6
	Feb	17,1	-10,4	-25,9	-64,2	7,7
	Mar	8,3	1,7	-14,6	-43,1	5,3
	Apr	10,9	4,1	-33,5	-32,8	7,8
	May	2,0	-4,8	-27,2	-29,3	-0,3
	Jun	3,8	3,1	-33,4	-35,5	2,3
	Jul	4,5	3,2	-14,9	-18,4	3,7
	Aug	1,1	-4,6	-13,8	-14,8	-0,5
	Sep	-3,7	-7,6	-18,5	11,5	-4,4
	Oct	8,0	-2,2	21,7	-6,2	5,7
	Nov	0,0	0,5	7,2	60,9	1,2
	Dec	11,0	3,1	-11,8	41,5	9,6
	Total	6,5	-1,8	-17,1	-18,9	3,9
2002	Jan	4,6	9,1	-3,7	44,2	5,9
	Feb	-2,5	-2,1	-18,1	41,0	-2,3
	Mar	-11,2	-15,0	1,3	26,0	-11,3
	Apr	2,5	12,4	24,1	11,1	4,7
	May	3,7	12,8 *	-20,9	17,7	5,2 *
	Jun	-3,7	-8,9	-14,3	-14,7	-5,0

1/ The percentage change is the change in the actual values of motor trading income of the relevant year compared with the actual values of motor trading income of the previous year expressed as a percentage.

2/ The percentage change is the change in the actual values of the motor trading income of the relevant month compared with the actual values of the motor trading income of the same month in the previous year expressed as a percentage.

* Revised.

Table 15 - Number of new vehicles sold according to type of vehicle

Year and month		Motor cars and minibuses	Commercial vehicles and buses	Motor cycles and scooters	Other new vehicles	Total number of new vehicles sold
2000	Jan	14 609	6 527	1 045	1 423	23 605
	Feb	16 557	7 430	889	1 368	26 245
	Mar	19 136	7 190	707	1 156	28 189
	Apr	16 637	6 111	758	671	24 177
	May	19 933	6 911	887	701	28 432
	Jun	19 250	7 602	887	813	28 553
	Jul	19 558	7 457	731	633	28 379
	Aug	19 812	7 865	751	742	29 169
	Sep	19 633	7 252	768	781	28 434
	Oct	18 717	7 660	756	1 134	28 267
	Nov	19 229	7 415	867	799	28 311
	Dec	18 737	6 714	792	817	27 060
	Total	221 808	86 134	9 838	11 038	328 821
2001	Jan	19 212	6 213	760	797	26 983
	Feb	21 752	7 002	717	432	29 903
	Mar	21 708	7 568	619	681	30 576
	Apr	18 350	6 009	530	566	25 454
	May	19 233	6 755	653	461	27 103
	Jun	19 983	7 843	591	503	28 920
	Jul	19 451	7 304	604	475	27 834
	Aug	19 674	6 796	654	616	27 740
	Sep	17 955	6 490	628	918	25 991
	Oct	19 171	7 653	920	1 062	28 806
	Nov	19 713	7 346	976	1 331	29 367
	Dec	22 575	7 213	732	1 144	31 664
	Total	238 777	84 192	8 384	8 986	340 341
2002	Jan	18 582	6 624	740	1 114	27 059
	Feb	19 237	6 907	590	611	27 345
	Mar	17 796	5 862	648	850	25 157
	Apr	17 554	7 092	685	614	25 946
	May	19 543	7 658	507	591	28 299
	Jun	18 341	6 633	521	423	25 918

Table 16 - Percentage change in the number of new vehicles sold according to type of vehicle

Year ^{1/}		Motor cars and	Commercial	Motor cycles	Other new	Total number
and		minibuses	vehicles and	and scooters	vehicles	of new
month ^{2/}			buses			vehicles sold
2000	Jan	-11,2	9,3	-14,3	55,0	-3,9
	Feb	-4,7	23,3	-2,8	26,8	3,3
	Mar	4,5	10,3	-23,9	0,6	4,7
	Apr	2,2	5,7	-15,8	-36,8	0,7
	May	16,4	10,4	2,3	-32,1	12,5
	Jun	20,8	26,0	-37,0	-27,5	16,6
	Jul	7,3	2,5	-44,1	72,0	4,4
	Aug	12,3	18,7	-50,6	29,9	10,7
	Sep	12,2	0,1	-52,2	-23,0	3,9
	Oct	4,0	28,0	-2,3	-21,8	7,8
	Nov	9,4	22,0	3,2	-35,3	10,1
	Dec	3,9	10,6	-11,5	-31,2	3,3
	Total	6,4	13,5	-25,4	-9,4	6,2
2001	Jan	31,5	-4,8	-27,3	-44,0	14,3
	Feb	31,4	-5,8	-19,3	-68,4	13,9
	Mar	13,4	5,3	-12,4	-41,1	8,5
	Apr	10,3	-1,7	-30,1	-15,6	5,3
	May	-3,5	-2,3	-26,4	-34,2	-4,7
	Jun	3,8	3,2	-33,4	-38,1	1,3
	Jul	-0,5	-2,1	-17,4	-25,0	-1,9
	Aug	-0,7	-13,6	-12,9	-17,0	-4,9
	Sep	-8,5	-10,5	-18,2	17,5	-8,6
	Oct	2,4	-0,1	21,7	-6,3	1,9
	Nov	2,5	-0,9	12,6	66,6	3,7
	Dec	20,5	7,4	-7,6	40,0	17,0
	Total	7,7	-2,3	-14,8	-18,6	3,5
2002	Jan	-3,3	6,6	-2,6	39,8	0,3
	Feb	-11,6	-1,4	-17,7	41,4	-8,6
	Mar	-18,0	-22,5	4,7	24,8	-17,7
	Apr	-4,3	18,0	29,2	8,5	1,9
	May	1,6	13,4	-22,4	28,2	4,4
	Jun	-8,2	-15,4	-11,8	-15,9	-10,4

^{1/} The percentage change is the change in the actual values of motor trading income of the relevant year compared with the actual values of motor trading income of the previous year expressed as a percentage.

^{2/} The percentage change is the change in the actual values of the motor trading income of the relevant month compared with the actual values of the motor trading income of the same month in the previous year expressed as a percentage.

* Revised.

Table 17 - Number of used vehicles sold according to type of vehicle

Year and month		Motor cars and minibuses	Commercial vehicles and buses	Motor cycles and scooters	Other used vehicles	Total number of used vehicles sold
2000	Jan	21 037	3 763	102	128	25 031
	Feb	21 703	4 528	134	144	26 509
	Mar	21 637	4 002	83	225	25 948
	Apr	19 065	2 888	110	320	22 383
	May	21 529	3 700	74	114	25 417
	Jun	22 741	3 725	79	123	26 669
	Jul	22 602	3 654	46	94	26 396
	Aug	24 030	3 892	75	105	28 102
	Sep	23 158	3 653	52	140	27 003
	Oct	23 330	4 193	49	109	27 682
	Nov	24 427	3 734	74	113	28 348
	Dec	21 931	3 603	75	99	25 707
	Total	267 190	45 335	953	1 714	315 195
2001	Jan	23 285	3 394	43	98	26 820
	Feb	23 061	3 707	41	110	26 920
	Mar	22 469	3 817	56	105	26 448
	Apr	21 244	3 358	47	100	24 749
	May	23 045	3 351	47	115	26 558
	Jun	23 609	3 833	52	101	27 595
	Jul	24 599	4 167	57	118	28 941
	Aug	24 666	4 416	58	106	29 246
	Sep	23 271	3 582	40	109	27 003
	Oct	26 232	3 944	60	104	30 339
	Nov	23 950	3 862	33	136	27 981
	Dec	22 580	3 427	33	152	26 191
	Total	282 011	44 858	567	1 354	328 791
2002	Jan	25 862	3 856	33	177	29 928
	Feb	24 439	3 573	31	153	28 196
	Mar	21 443	3 814	36	140	25 432
	Apr	23 040	3 433	31	126	26 630
	May	24 279	3 741 *	47	87	28 153 *
	Jun	23 646	4 005	30	92	27 773

* Revised.

Table 18 - Percentage change in the number of used vehicles sold according to type of vehicle

Year ^{1/}		Motor cars and	Commercial	Motor cycles	Other used	Total number
and		minibuses	vehicles and	and scooters	vehicles	of used
month ^{2/}			buses			vehicles sold
2000	Jan	11,1	-14,0	20,0	29,3	6,5
	Feb	10,1	-1,5	83,6	63,6	8,3
	Mar	5,6	-9,0	-12,6	177,8	3,5
	Apr	-0,4	-29,8	27,9	290,2	-4,4
	May	10,0	-14,0	13,8	17,5	5,7
	Jun	19,2	-13,7	-17,7	26,8	13,1
	Jul	-3,2	-25,0	-20,7	-4,1	-7,0
	Aug	-3,5	-19,4	-30,6	-7,9	-6,2
	Sep	-0,4	-33,5	-26,8	33,3	-6,6
	Oct	-2,1	-6,1	-71,2	-18,0	-3,2
	Nov	5,7	-2,2	-53,8	-19,3	4,1
	Dec	-1,2	-9,7	-37,0	15,1	-2,6
	Total	3,7	-15,4	-19,6	40,5	0,5
2001	Jan	10,7	-9,8	-57,8	-23,4	7,1
	Feb	6,3	-18,1	-69,4	-23,6	1,6
	Mar	3,8	-4,6	-32,5	-53,3	1,9
	Apr	11,4	16,3	-57,3	-68,8	10,6
	May	7,0	-9,4	-36,5	0,9	4,5
	Jun	3,8	2,9	-34,2	-17,9	3,5
	Jul	8,8	14,0	23,9	25,5	9,6
	Aug	2,6	13,5	-22,7	1,0	4,1
	Sep	0,5	-1,9	-23,1	-22,1	0,0
	Oct	12,4	-5,9	22,4	-4,6	9,6
	Nov	-2,0	3,4	-55,4	20,4	-1,3
	Dec	3,0	-4,9	-56,0	53,5	1,9
	Total	5,5	-1,1	-40,5	-21,0	4,3
2002	Jan	11,1	13,6	-23,3	80,6	11,6
	Feb	6,0	-3,6	-24,4	39,1	4,7
	Mar	-4,6	-0,1	-35,7	33,3	-3,8
	Apr	8,5	2,2	-34,0	26,0	7,6
	May	5,4	11,6 *	0,0	-24,3	6,0 *
	Jun	0,2	4,5	-42,3	-8,9	0,6

^{1/} The percentage change is the change in the actual values of motor trading income of the relevant year compared with the actual values of motor trading income of the previous year expressed as a percentage.

^{2/} The percentage change is the change in the actual values of the motor trading income of the relevant month compared with the actual values of the motor trading income of the same month in the previous year expressed as a percentage.

* Revised.

Additional information

Explanatory notes

- | | |
|--------------------------------------|--|
| Introduction | <p>1 This publication contains results of the monthly survey of retail trade in motor vehicles and accessories. The survey is designed to obtain information regarding -</p> <ul style="list-style-type: none"> • income from the sales of new vehicles; • income from the sales of used vehicles; • workshop income; • other trading income; • cash and credit sale transactions of vehicles; and • the number of new and used vehicles sold. <p>2 The information in this publication includes actual and seasonally adjusted values of motor trade sales. Prior to January 2000, Stats SA collected and published information on motor trade sales including Value Added Tax (VAT). As from January 2000, Stats SA collects information regarding retail trade in motor vehicles and accessories excluding VAT.</p> |
| Scope of the survey | <p>3 The survey collects information from a sample of enterprises in South Africa that are predominantly involved in the retail trade in motor vehicles and accessories. These enterprises include -</p> <ul style="list-style-type: none"> • motor vehicle dealers, filling stations and workshops; • motor cycle dealers; • spares and accessories dealers; • retail tyre dealers; • automotive electricians; • radiator repairers; • panel beaters and spray painters; • other specialised motor repair services; and • other motor trade. |
| Classification | <p>4 The 1993 edition of the Standard Industrial Classification of all Economic Activities (SIC), Fifth edition, Report No. 09-90-02, was used to classify the statistical units in the survey. The SIC is based on the 1990 International Standard Industrial Classification for all Economic Activities (ISIC) with suitable adaptations for local conditions. Statistics in this publication are presented at SIC subgroup (5 digit) level. Each statistical unit is classified to an industry that reflects the predominant activity of the enterprise.</p> |
| Statistical unit | <p>5 The statistical unit for collection of information is an enterprise. An enterprise is a legal entity consisting of one or more establishments (branches), including the head office, but excluding holding or subsidiary companies. Information is collected from enterprises that are predominantly involved in the retail trade in motor vehicles and accessories.</p> |
| Survey methodology and design | <p>6 All statistical units are stratified in the motor trade industry according to type of dealer and measure of size, where measure of size is the total motor trading income of the enterprise. All large enterprises are completely enumerated. For medium size enterprises and small enterprises, samples are drawn by systematically selecting enterprises with equal probability.</p> <p>7 The data are collected by mail each month from a sample of approximately 420 motor trade enterprises from a population of approximately 14 000 motor trade enterprises. Questionnaires have to be returned to Stats SA within 10 days after the end of the reference month. Fax and telephone reminders are used to follow up non-respondents.</p> |

Seasonal adjustment	8	Seasonally adjusted estimates of retail trade in motor vehicles and accessories are generated each month, using the X-11 Seasonal Adjustment Program developed by US Bureau of the Census Economic Research and Analyses Division, 1968.												
	9	Seasonal adjustment is a means of removing the estimated effects of normal seasonal variation from the series so that the effects of other influences on the series can be more clearly recognised. Seasonal adjustment does not aim to remove irregular or non-seasonal influences which may be present in any particular month. Influences that are volatile or unsystematic can still make it difficult to interpret the movement of the series even after adjustment for seasonal variations. Therefore, the month-to-month movements of seasonally adjusted estimates may not be reliable indicators of trend behaviour.												
Trend	10	The trend is a long-term pattern or movement of a time series. The X-11 Seasonal Adjustment Program is used for smoothing seasonally adjusted data.												
Reliability of estimates	11	Data presented in this publication are based on information obtained from a sample of enterprises and is, therefore, subject to sampling variability; that is, it may differ from the figures that would have been produced if the data had been obtained from all motor trade enterprises in South Africa.												
	12	Inaccuracies may occur because of imperfections in reporting by enterprises and errors made in collection and processing of the data. Inaccuracies of this kind are referred to as non-sampling errors. Every effort is made to reduce non-sampling errors to a minimum by careful designing the questionnaires, pilot studies, editing of data and efficient operating procedures.												
Related publications	13	Users may also wish to refer to the following publications which are available from Stats SA: <ul style="list-style-type: none"> • Bulletin of Statistics. • SA Statistics. 												
Unpublished statistics	14	In some cases Stats SA can also make available statistics which are not published. This information can be made available in one or more of the following ways: computer printouts, diskette and CD. Generally a charge is made for providing unpublished statistics.												
Rounding-off of figures	15	When figures have been rounded-off discrepancies may occur between sums of the component items and totals.												
Symbols and abbreviations		<table border="0" style="width: 100%;"> <tr> <td style="width: 30%;">CD</td> <td>Compact Disc</td> </tr> <tr> <td>GDP</td> <td>Gross Domestic Product</td> </tr> <tr> <td>ISIC</td> <td>International Standard Industrial Classification for all Economic Activities</td> </tr> <tr> <td>SIC</td> <td>Standard Industrial Classification of all Economic Activities</td> </tr> <tr> <td>Stats SA</td> <td>Statistics South Africa</td> </tr> <tr> <td>VAT</td> <td>Value Added Tax</td> </tr> </table>	CD	Compact Disc	GDP	Gross Domestic Product	ISIC	International Standard Industrial Classification for all Economic Activities	SIC	Standard Industrial Classification of all Economic Activities	Stats SA	Statistics South Africa	VAT	Value Added Tax
CD	Compact Disc													
GDP	Gross Domestic Product													
ISIC	International Standard Industrial Classification for all Economic Activities													
SIC	Standard Industrial Classification of all Economic Activities													
Stats SA	Statistics South Africa													
VAT	Value Added Tax													

Technical note

Response rate	The response rate for the survey of retail trade in motor vehicles and accessories for June 2002 is 76.2%.
----------------------	--

Glossary

Enterprise (firm)	An enterprise (firm) is a legal entity consisting of one or more establishments (branches) including the head office, but excluding holding or subsidiary companies.
Establishment (branch)	An establishment (branch) is the smallest economic unit which operates as a separate entity, for which comprehensive financial records are kept.
Miscellaneous trading income	Miscellaneous trading income includes the income from the sales of petrol, diesel oil and lubricants.
Motor trading enterprise	A motor trading enterprise is an enterprise deriving 50% or more of its income from the sales of goods relating to the motor industry.
Other vehicles	Other vehicles include caravans, trailers and tractors.
Percentage change	<p>When using monthly actual values, the percentage change is the change in actual values of the motor trading income of the relevant month compared with the actual values of the motor trading income of the same month in the previous year expressed as a percentage.</p> <p>When using annual actual values, the percentage change is the change in the actual values of motor trading income of the relevant year compared with the actual values of motor trading income of the previous year expressed as a percentage.</p> <p>When using seasonally adjusted values, the percentage change is the change in the seasonally adjusted values of the motor trading income of the relevant month compared with the seasonally adjusted values of the motor trading income of the previous month, expressed as a percentage.</p>
Reference month	Reference month for the survey means one calendar month.
Total motor trading income	Total motor trading income includes the income from the sales of new vehicles, the sales of used vehicles, income from the workshop and all other trading income.
Workshop income	Workshop income includes labour charges, as well as spares, accessories, fuels and lubricants transferred to the workshop.

For more information

Stats SA publishes approximately 300 different statistical releases each year. It is not economically viable to produce them in more than one of South Africa's eleven official languages. Since the releases are used extensively, locally and also by international economic and social-scientific communities, Stats SA releases are published in English only.

Stats SA has copyright on this publication. Users may apply the information as they wish, provided that they acknowledge Stats SA as the source of the basic data wherever they process, apply, utilise, publish or distribute the data; and also that they specify that the relevant application and analysis (where applicable), result from their own processing of the data.

Stats SA products

A complete set of Stats SA publications is available at the Stats SA Library and the following libraries:

National Library of South Africa, Pretoria Division
 National Library of South Africa, Cape Town Division
 Natal Society Library, Pietermaritzburg
 Library of Parliament, Cape Town
 Bloemfontein Public Library
 Johannesburg Public Library
 Eastern Cape Library Services, King William's Town
 Central Regional Library, Pietersburg
 Central Reference Library, Nelspruit
 Central Reference Collection, Kimberley
 Central Reference Library, Mmabatho

Stats SA also provides a subscription service.

Electronic services

A large range of data are available via on-line services, CD, diskette and computer printouts. For more details about our electronic data services, contact (012) 310 8600/8095/8390/8351.

You can visit us on the Internet at: <http://www.statssa.gov.za>

Enquires

Telephone number:	(012) 310 8600/8095/8390/8351 (for user enquiries)
	(012) 310 8244 (technical enquires)
	(012) 310 8161 (publications)
	(012) 310 8490 (library)

Fax number: (012) 322 4271

e-mail address: Motortrade@statssa.pwv.gov.za

Postal address: Private bag X44, Pretoria, 0001