



The South Africa I know, the home I understand



Statistical release

P6343.2

Motor trade sales (Preliminary)

January 2014

**Embargoed until:
20 March 2014
11:30**

Enquiries:

User Information Services
(012) 310 8600

Forthcoming issue:

February 2014

Expected release date:

17 April 2014

Contents

Sales at current prices: results for January 2014 2

Table A – Key growth rates in motor trade sales at current prices..... 2

Table B – Motor trade sales at current prices for the latest three months by type of activity..... 2

Figure 1 – Motor trade sales at current prices..... 3

Figure 2 – Motor trade sales at current prices: year-on-year percentage change 3

Tables..... 4

Table 1 – Motor trade sales at current prices (R million)..... 4

Table 2 – Year-on-year percentage change in motor trade sales at current prices 4

Table 3 – Seasonally adjusted motor trade sales at current prices..... 4

Table 4 – Motor trade sales at current prices by type of activity (R million) 5

Table 5 – Year-on-year percentage change in motor trade sales at current prices by type of activity 5

Table 6 – Contribution of each type of activity to the year-on-year percentage change in motor trade sales at
current prices 5

Survey information 6

Technical notes..... 7

Glossary..... 9

Technical enquiries 9

General information..... 10

Sales at current prices: results for January 2014

Table A – Key growth rates in motor trade sales at current prices

	Aug-13	Sep-13	Oct-13	Nov-13	Dec-13	Jan-14
Year-on-year % change, unadjusted	7,4	6,3	4,6	1,3	2,8	2,4
Month-on-month % change, seasonally adjusted	-2,3	-1,5	1,0	-1,0	-3,5	4,2
3-month % change, seasonally adjusted 1/	1,0	2,1	-0,2	-0,9	-2,6	-1,8

1/ Percentage change between the previous 3 months and the 3 months ending in the month indicated.

Measured in nominal terms (current prices), motor trade sales increased by 2,4% year-on-year in January 2014. The highest annual growth rates were recorded for fuel sales (9,0%), workshop income (4,2%) and sales of accessories (3,7%) – see Table 5.

Seasonally adjusted motor trade sales increased by 4,2% in January 2014 compared with December 2013. This followed month-on-month changes of -3,5% in December 2013 and -1,0% in November 2013.

Seasonally adjusted motor trade sales decreased by 1,8% in the three months ended January 2014 compared with the previous three months.

Table B – Motor trade sales at current prices for the latest three months by type of activity

Type of activity	Nov 2012 – Jan 2013 (R million)	Weight	Nov 2013 – Jan 2014 (R million)	% change between Nov 2012 – Jan 2013 and Nov 2013 – Jan 2014	Contribution (% points) to the total % change
New vehicle sales	34 559	27,8	34 712	0,4	0,1
Used vehicle sales	21 750	17,5	21 506	-1,1	-0,2
Workshop income	7 390	5,9	7 568	2,4	0,1
Income from the sales of accessories	20 992	16,9	21 395	1,9	0,3
Income from fuel sales	34 111	27,4	36 268	6,3	1,7
Income from convenience store sales 1/	5 684	4,6	5 719	0,6	0,0
Total	124 488	100,0	127 167	2,2	2,2

1/ Includes 'other' sales and trading income.

Motor trade sales increased by 2,2% in the three months ended January 2014 compared with the three months ended January 2013. The major contributor to this increase was fuel sales (6,3% and contributing 1,7 percentage points) – see Table B.

Figure 1 – Motor trade sales at current prices

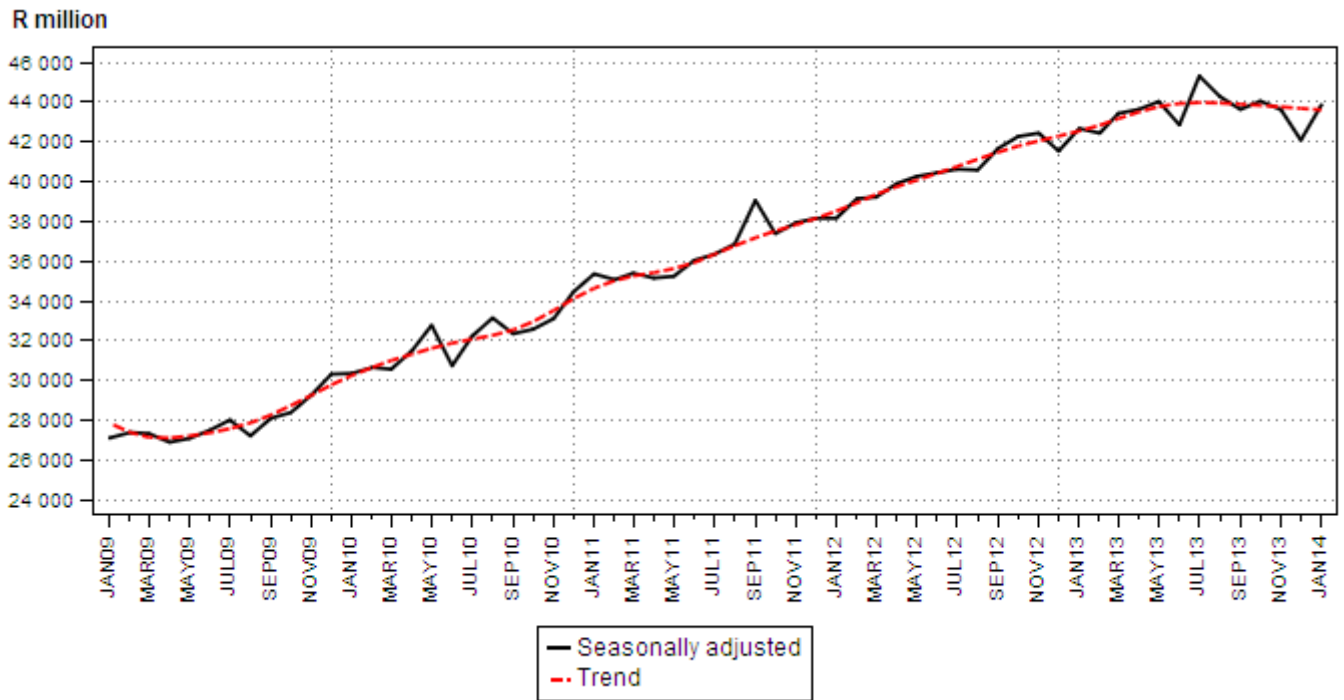
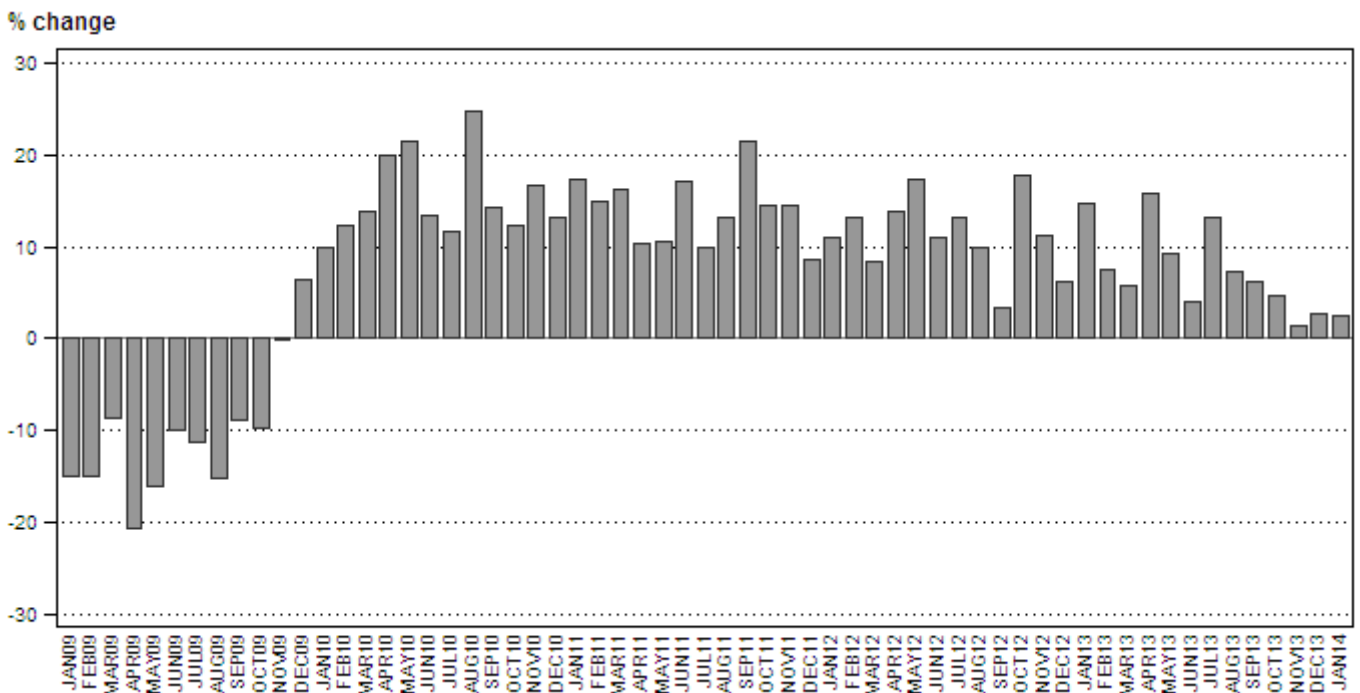


Figure 2 – Motor trade sales at current prices: year-on-year percentage change



PJ Lehohla
 Statistician-General

Tables

Table 1 – Motor trade sales at current prices (R million)

Month	2008	2009	2010	2011	2012	2013	2014 1/
Jan	29 715	25 250	27 784	32 611	36 190	41 495	42 496
Feb	30 630	26 039	29 243	33 599	38 021	40 891	
Mar	30 790	28 114	31 984	37 168	40 302	42 659	
Apr	30 912	24 528	29 418	32 438	36 913	42 738	
May	30 830	25 830	31 359	34 681	40 701	44 494	
Jun	29 920	26 962	30 567	35 783	39 719	41 293	
Jul	32 932	29 218	32 614	35 852	40 562	45 863	
Aug	31 459	26 648	33 257	37 660	41 370	44 442	
Sep	30 247	27 587	31 497	38 234	39 496	41 998	
Oct	31 701	28 600	32 138	36 829	43 367	45 362	
Nov	29 583	29 524	34 411	39 411	43 833	44 412	
Dec	28 299	30 104	34 034	36 916	39 160	40 259	
Total	367 018	328 404	378 306	431 182	479 634	515 906	

1/ Latest month is preliminary.

Table 2 – Year-on-year percentage change in motor trade sales at current prices

Month	2009	2010	2011	2012	2013	2014	2014 year-to-date
Jan	-15,0	10,0	17,4	11,0	14,7	2,4	2,4
Feb	-15,0	12,3	14,9	13,2	7,5		
Mar	-8,7	13,8	16,2	8,4	5,8		
Apr	-20,7	19,9	10,3	13,8	15,8		
May	-16,2	21,4	10,6	17,4	9,3		
Jun	-9,9	13,4	17,1	11,0	4,0		
Jul	-11,3	11,6	9,9	13,1	13,1		
Aug	-15,3	24,8	13,2	9,9	7,4		
Sep	-8,8	14,2	21,4	3,3	6,3		
Oct	-9,8	12,4	14,6	17,8	4,6		
Nov	-0,2	16,6	14,5	11,2	1,3		
Dec	6,4	13,1	8,5	6,1	2,8		
Total	-10,5	15,2	14,0	11,2	7,6		

Table 3 – Seasonally adjusted motor trade sales at current prices

Month	R million				Month-on-month % change			
	2011	2012	2013	2014	2011	2012	2013	2014
Jan	35 355	38 159	42 669	43 860	2,6	0,0	2,7	4,2
Feb	35 063	39 139	42 435		-0,8	2,6	-0,5	
Mar	35 390	39 219	43 427		0,9	0,2	2,3	
Apr	35 149	39 896	43 632		-0,7	1,7	0,5	
May	35 235	40 256	44 027		0,2	0,9	0,9	
Jun	36 040	40 442	42 850		2,3	0,5	-2,7	
Jul	36 336	40 623	45 308		0,8	0,4	5,7	
Aug	36 860	40 580	44 276		1,4	-0,1	-2,3	
Sep	39 053	41 670	43 630		5,9	2,7	-1,5	
Oct	37 379	42 268	44 046		-4,3	1,4	1,0	
Nov	37 928	42 439	43 618		1,5	0,4	-1,0	
Dec	38 155	41 535	42 082		0,6	-2,1	-3,5	

Table 4 – Motor trade sales at current prices by type of activity (R million)

Type of activity	Aug-13	Sep-13	Oct-13	Nov-13	Dec-13	Jan-14 1/
New vehicle sales	12 831	11 571	12 603	12 236	10 598	11 878
Used vehicle sales	7 644	7 285	8 166	7 708	6 650	7 148
Workshop income	2 577	2 445	2 730	2 719	2 286	2 563
Income from the sales of accessories	7 366	6 835	7 819	7 679	6 236	7 480
Income from fuel sales	12 267	12 175	12 226	12 192	12 464	11 612
Income from convenience store sales 2/	1 759	1 686	1 817	1 878	2 026	1 815
Total	44 442	41 998	45 362	44 412	40 259	42 496

1/ Preliminary.

2/ Includes 'other' sales and trading income.

Table 5 – Year-on-year percentage change in motor trade sales at current prices by type of activity

Type of activity	Aug-13	Sep-13	Oct-13	Nov-13	Dec-13	Jan-14
New vehicle sales	8,1	6,6	6,2	0,8	1,0	-0,5
Used vehicle sales	1,7	2,8	1,4	-2,2	3,5	-4,0
Workshop income	2,8	6,7	2,6	-1,2	4,9	4,2
Income from the sales of accessories	1,0	1,9	4,7	-0,6	2,9	3,7
Income from fuel sales	17,0	13,3	6,8	6,2	4,1	9,0
Income from convenience store sales 1/	3,0	-6,7	-2,5	1,2	-0,5	1,2
Total	7,4	6,3	4,6	1,3	2,8	2,4

1/ Includes 'other' sales and trading income.

Table 6 – Contribution of each type of activity to the year-on-year percentage change in motor trade sales at current prices

Type of activity	Aug-13	Sep-13	Oct-13	Nov-13	Dec-13	Jan-14
New vehicle sales	2,3	1,8	1,7	0,2	0,3	-0,1
Used vehicle sales	0,3	0,5	0,3	-0,4	0,6	-0,7
Workshop income	0,2	0,4	0,2	-0,1	0,3	0,2
Income from the sales of accessories	0,2	0,3	0,8	-0,1	0,4	0,6
Income from fuel sales	4,3	3,6	1,8	1,6	1,3	2,3
Income from convenience store sales 1/	0,1	-0,3	-0,1	0,1	0,0	0,1
Total	7,4	6,3	4,6	1,3	2,8	2,4

1/ Includes 'other' sales and trading income.

Survey information

Introduction	<p>1 Statistics South Africa (Stats SA) conducts a monthly survey covering enterprises in the motor trade industry (see 4 below). This survey is based on a sample drawn from Stats SA's 2013 business sampling frame (BSF) that contains businesses registered at the South African Revenue Service (SARS) for value added tax (VAT). Stats SA continuously updates its BSF, which is linked to the SARS administrative data.</p> <p>2 In order to improve timeliness, some information for the latest month had to be estimated due to late response. These estimates will be revised in future statistical releases as soon as information becomes available. Published motor trade sales estimates exclude VAT.</p>
Purpose of the survey	<p>3 The results of the monthly motor trade sales survey are used to compile estimates of the gross domestic product (GDP) and its components, which are used in monitoring the state of the economy and formulation of economic policy. These statistics are also used in the analysis of comparative business and industry performance.</p>
Scope of the survey	<p>4 The survey collects information from a sample of enterprises in South Africa that are predominantly involved in motor trade. These enterprises include:</p> <ul style="list-style-type: none"> • motor vehicle dealers, filling stations and workshops; • motor cycle dealers; • spares and accessories; • tyre dealers; • automotive electricians; • radiator repairs; • panel beaters and spray painters; • 'other' specialised motor repair services; and • 'other' motor trade.
Classification	<p>5 The 1993 edition of the <i>Standard Industrial Classification of all Economic Activities</i> (SIC), Fifth Edition, Report No. 09-90-02, was used to classify the statistical units in the survey. The SIC is based on the 1990 <i>International Standard Industrial Classification of all Economic Activities</i> (ISIC) with suitable adaptations for local conditions. Each enterprise is classified to the industry which reflects its predominant activity. Statistics in this publication are presented at SIC group (four digits) level.</p>
Collection rate	<p>6 The preliminary collection rate for the survey on motor trade sales for January 2014 was 82,1%. The improved collection rate for December 2013 was 86,6%.</p>
Statistical unit	<p>7 The statistical unit for which information is compiled and published is the enterprise, defined as a legal unit or a combination of legal units that includes and directly controls all functions necessary to carry out its sales and service activities.</p>
Revised figures	<p>8 Revised figures are mainly due to late submission of data to Stats SA, or respondents reporting revisions or corrections to their figures. Preliminary figures, as indicated in the relevant tables, are subject to change and when revised will not be indicated as such.</p>
Related publications	<p>9 Users may also refer to the following publications available from Stats SA:</p> <ul style="list-style-type: none"> • <i>Bulletin of Statistics</i> issued quarterly; and • <i>SA Statistics</i> issued annually.

- Rounding-off of figures** 10 Where figures have been rounded off, discrepancies may occur between sums of the component items and the totals.
- Historical data** 11 Historical motor trade data are available on the Stats SA webpage. To access the data electronically, use the following link:
http://beta2.statssa.gov.za/?page_id=1849
- Past publications** 12 Past motor trade releases are available on the Stats SA webpage. To access the releases electronically, use the following link:
http://beta2.statssa.gov.za/?page_id=1866&PPN=P6343.2&SCH=5722

Technical notes

Survey methodology and design

- 1 The survey is conducted monthly. Questionnaires are sent to a sample of about 850 enterprises from a population of about 11 000 enterprises. Completed questionnaires are required to be returned to Stats SA within 10 days after the end of the reference month. Email, fax and telephone reminders are used to follow up on non-respondents.
- 2 A stratified random sample was drawn in April 2013 from Stats SA’s business sampling frame (BSF) at the SIC four-digit level. Strata were formed using a combination of Standard Industrial Classification and the measure of size classes for enterprises (see point 3 below).

The Neyman optimal allocation formula given below was used to allocate samples to each stratum.

$$n_h = \frac{N_h S_h}{\sum N_h S_h}$$

N_h and S_h are the stratum population size and the stratum variance respectively.

Neyman allocation formula not only allocates sample sizes to each stratum but also calculates the relative precision for each stratum as well as the relative precision for all strata. The relative precision for these strata did not exceed 3,5%.

Class limits

- 3 Each motor trade classification group (SIC at four digit level) is divided into four size groups. All large enterprises (size group one) are completely enumerated. Simple random sampling is applied to medium and small enterprises (size groups two, three and four). The total value of sales of the large enterprises (size group one) per classification group is added to the weighted totals of size groups two, three and four to reflect the total value of sales.

Measure of size classes (Rand)

Enterprise size	Size group	Lower limits	Upper limits
Very small	4	0	18 000 000
Small	3	18 000 001	85 500 000
Medium	2	85 500 001	175 500 000
Large	1	175 500 001	

Sample weighting

- 4 For those strata not completely enumerated, the weights to produce estimates are the inverse ratio of the sampling fraction, modified to take account of non-response in the survey. Stratum estimates are calculated and then aggregated with the completely enumerated stratum to form classification group estimates. These procedures are consistent with international best practice.

Seasonal adjustment	5	Seasonally adjusted estimates are generated each month using the X-12-ARIMA Seasonal Adjustment Program developed by the US Bureau of the Census, 1968. Seasonal adjustment is a means of removing the estimated effects of normal seasonal variation from the series so that the effects of other influences on the series can be recognised more clearly. Seasonal adjustment does not aim to remove irregular or non-seasonal influences which may be present in any particular month. Influences that are volatile or unsystematic can still make it difficult to interpret the movement of the series even after adjustment for seasonal variations. Therefore the month-to-month movements of seasonally adjusted estimates may not be reliable indicators of trend behaviour. The X-12-ARIMA procedure for motor trade sales is described in more detail on the Stats SA website at: http://www.statssa.gov.za/Publications/P63432/Seasonal_adjustment_motor_Jun13.pdf
Trend cycle	6	The trend is the long-term pattern or movement of a time series. The X-12-ARIMA Seasonal Adjustment Program is used for smoothing seasonally adjusted estimates to estimates of the underlying trend cycle.
Reliability of estimates	7	Data presented in this publication are based on information obtained from a sample and are, therefore, subject to sampling variability; that is, they may differ from the figures that would have been produced if the data had been obtained from all enterprises in the motor trade industry in South Africa. Estimates are subject to sampling and non-sampling errors.
	8	Inaccuracies may occur because of imperfections in reporting by enterprises and errors made in the collection and processing of the data. Inaccuracies of this kind are referred to as non-sampling errors. Every effort is made to minimise non-sampling errors by careful design of questionnaires, testing them in pilot studies, editing reported data and implementing efficient operating procedures. Fluctuations may occur in consecutive months as a result of seasonal and economic factors.
Month-on-month percentage change	9	The month-on-month percentage change in a variable for any given month is the change between that month and the previous month, expressed as a percentage of the latter.
Year-on-year percentage change	10	The year-on-year percentage change in a variable for any given period is the change between that period and the corresponding period of the previous year, expressed as a percentage of the latter.
Contribution (percentage points)	11	The contribution (percentage points) to the year-on-year percentage change is calculated by multiplying the percentage change of each type of activity by its corresponding weight, divided by 100. The weight is the percentage contribution of each type of activity to total motor trade sales in the corresponding period of the previous year.

Glossary

Enterprise

An enterprise is a legal entity or a combination of legal units that includes and directly controls all functions necessary to carry out its sales activities.

Industry

An industry is made up of enterprises engaged in the same or similar kinds of economic activity. Industries are defined in the *System of National Accounts (SNA)* in the same way as in the *Standard Industrial Classification of all Economic Activities, Fifth Edition, Report No. 09-90-02 of January 1993 (SIC)*.

Symbols and abbreviations

BSF	Business sampling frame
GDP	Gross domestic product
ISIC	International Standard Industrial Classification
IT	Income tax
Rm	Rand million
SIC	Standard Industrial Classification of all Economic Activities
SARS	South African Revenue Service
Stats SA	Statistics South Africa
VAT	Value added tax

Technical enquiries

Peter Makota

Telephone number: (012) 310 4837
Email: petermak@statssa.gov.za

Keshnee Govender

Telephone number: (012) 310 8423
Email: keshneeg@statssa.gov.za

General information

Stats SA publishes approximately 300 different statistical releases each year. It is not economically viable to produce them in more than one of South Africa's eleven official languages. Since the releases are used extensively, not only locally but also by international economic and social-scientific communities, Stats SA releases are published in English only.

Stats SA has copyright on this publication. Users may apply the information as they wish, provided that they acknowledge Stats SA as the source of the basic data wherever they process, apply, utilise, publish or distribute the data; and also that they specify that the relevant application and analysis (where applicable) result from their own processing of the data.

Advance release calendar

An advance release calendar is disseminated on www.statssa.gov.za

Stats SA products

A complete set of Stats SA publications is available at the Stats SA Library and the following libraries:

National Library of South Africa, Pretoria Division
National Library of South Africa, Cape Town Division
Natal Society Library, Pietermaritzburg
Library of Parliament, Cape Town
Bloemfontein Public Library
Johannesburg Public Library
Eastern Cape Library Services, King William's Town
Central Regional Library, Polokwane
Central Reference Library, Mbombela
Central Reference Collection, Kimberley
Central Reference Library, Mmabatho

Stats SA also provides a subscription service.

Electronic services

A large range of data is available via online services. For more detail about our electronic services, contact Stats SA's user information service at (012) 310 8600.

You can visit us on the internet at: www.statssa.gov.za

General enquiries

User information services	Telephone number: (012) 310 8600 Email address: info@statssa.gov.za
Orders/subscription services	Telephone number: (012) 310 8358 Email address: magdaj@statssa.gov.za
Postal address	Private Bag X44, Pretoria, 0001

Produced by Stats SA