



stats sa

Department:
Statistics South Africa
REPUBLIC OF SOUTH AFRICA

Private Bag X44, Pretoria, 0001, South Africa, ISibalo House, Koch Street, Salvokop, Pretoria, 0002
www.statssa.gov.za, info@statssa.gov.za, Tel +27 12 310 8911

STATISTICAL RELEASE

P6343.2

Motor trade sales (Preliminary)

February 2020

Owing to the COVID-19 lockdown, the collection rate for this publication (71,9% in February) is lower than usual. Consequently, revisions may be larger than usual.

Embargoed until:
14 May 2020
11:30

ENQUIRIES:
Keshnee Naidoo
(082) 689 5341

FORTHCOMING ISSUE:
April 2020

EXPECTED RELEASE DATE:
18 June 2020



Dipalopalo tsa Aforikaborwa • Dipalopalo tsa Afrika Borwa • Ezezibalo zaseNingizimu Afrika • Tshitatistika Afrika Tshipembe • Tinhlayohlayo Afrika-Dzonga
Statistieke Suid-Afrika • Dipalopalo tša Afrika Borwa • Telubalo taseNingizimu Afrika • EzeeNkcukacha maNani zoMzantsi Afrika • Iimbalobalo zeSewula Afrika

The South Africa I know, the home I understand



Contents

Sales at current prices: results for February 2020 **2**

Table A – Key growth rates in motor trade sales at current prices.....2

Table B – Motor trade sales at current prices for the latest three months by type of activity.....2

Figure 1 – Motor trade sales at current prices 3

Figure 2 – Motor trade sales at current prices: year-on-year percentage change 3

Tables..... **4**

Table 1 – Motor trade sales at current prices (R million).....4

Table 2 – Year-on-year percentage change in motor trade sales at current prices4

Table 3 – Seasonally adjusted motor trade sales at current prices.....4

Table 4 – Motor trade sales at current prices by type of activity (R million)5

Table 5 – Year-on-year percentage change in motor trade sales at current prices by type of activity5

Table 6 – Contribution of each type of activity to the year-on-year percentage change in motor trade sales at
current prices5

Survey information **6**

Technical notes..... **7**

Glossary..... **9**

Technical enquiries **9**

General information..... **10**

Sales at current prices: results for February 2020

Table A – Key growth rates in motor trade sales at current prices

	Sep-19	Oct-19	Nov-19	Dec-19	Jan-20	Feb-20
Year-on-year % change, unadjusted	0,1	-0,7	-4,1	2,4	1,3	4,5
Month-on-month % change, seasonally adjusted	-3,0	0,9	-1,7	-0,3	1,5	0,8
3-month % change, seasonally adjusted 1/	0,0	0,3	-1,8	-1,9	-1,8	0,1

1/ Percentage change between the previous 3 months and the 3 months ending in the month indicated.

Measured in nominal terms (current prices), motor trade sales increased by 4,5% year-on-year in February 2020. The largest annual growth rates were recorded for:

- fuel sales (11,5%);
- used vehicle sales (7,1%); and
- convenience stores sales (6,3%) – see Table 5.

Seasonally adjusted motor trade sales increased by 0,8% in February 2020 compared with January 2020. This followed month-on-month changes of 1,5% in January 2020 and -0,3% in December 2019.

In the three months ended February 2020, seasonally adjusted motor trade sales increased by 0,1% compared with the previous three months.

Table B – Motor trade sales at current prices for the latest three months by type of activity

Type of activity	Dec 2018 – Feb 2019 (R million)	Weight	Dec 2019 – Feb 2020 (R million)	% change between Dec 2018 – Feb 2019 and Dec 2019 – Feb 2020	Contribution (% points) to the total % change
New vehicle sales	39 577	25,1	39 562	0,0	0,0
Used vehicle sales	27 967	17,7	29 864	6,8	1,2
Workshop income	10 266	6,5	10 333	0,7	0,0
Income from the sales of accessories	25 798	16,4	26 187	1,5	0,2
Income from fuel sales	47 806	30,3	49 750	4,1	1,2
Income from convenience store sales 1/	6 270	4,0	6 245	-0,4	0,0
Total	157 685	100,0	161 941	2,7	2,7

1/ Includes 'other' sales and trading income.

Motor trade sales increased by 2,7% in the three months ended February 2020 compared with the three months ended February 2019. The main contributors to this increase were:

- used vehicle sales (6,8% and 1,2 percentage points); and
- fuel sales (4,1% and 1,2 percentage points) – see Table B.

Figure 1 – Motor trade sales at current prices

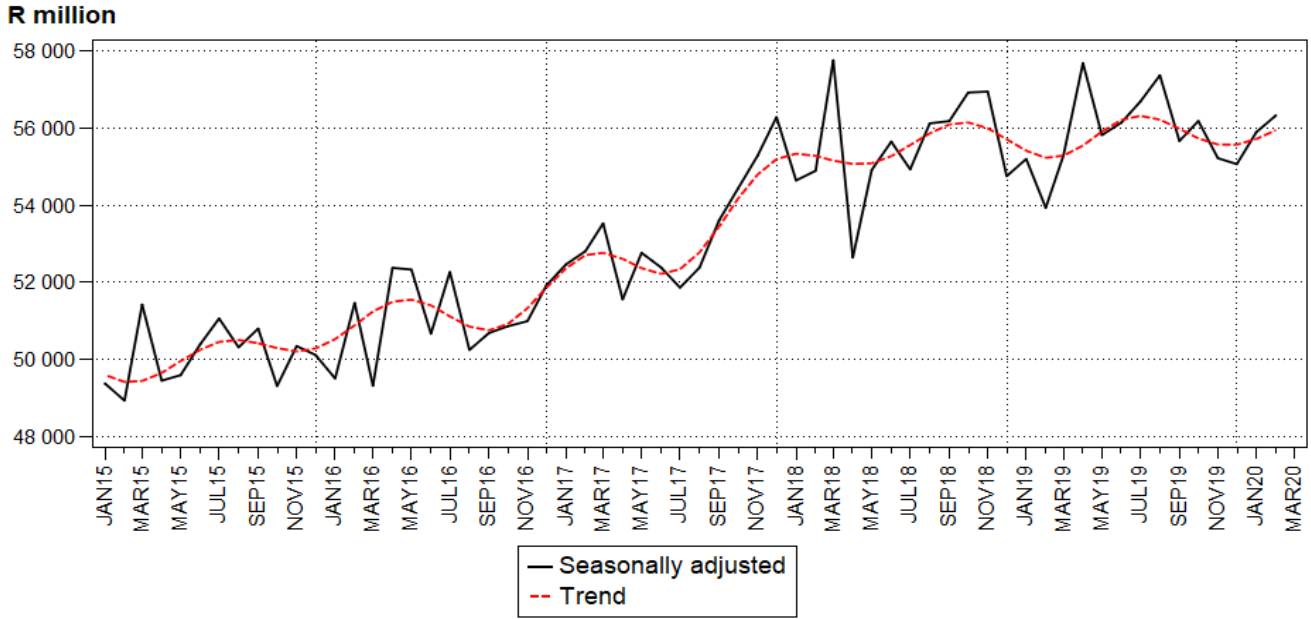
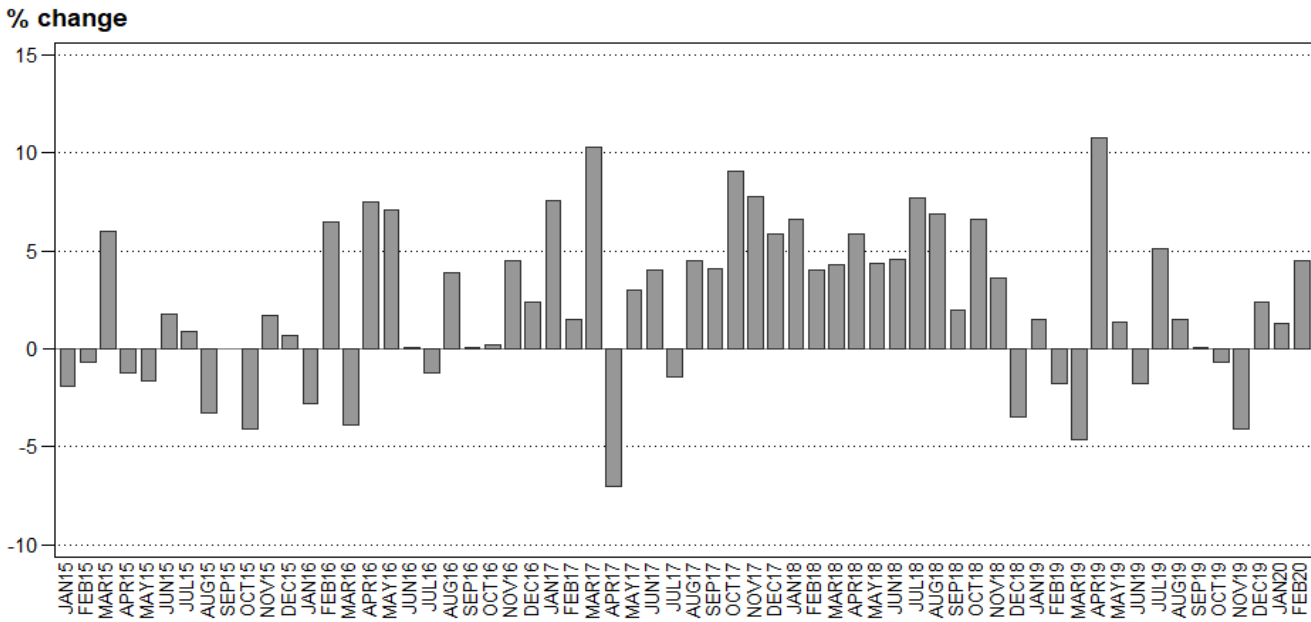


Figure 2 – Motor trade sales at current prices: year-on-year percentage change



Risenga Maluleke
Statistician-General

Tables

Table 1 – Motor trade sales at current prices (R million)

Month	2014	2015	2016	2017	2018	2019	2020 1/
Jan	48 487	47 584	46 236	49 766	53 044	53 844	54 522
Feb	47 779	47 442	50 510	51 272	53 321	52 361	54 701
Mar	49 783	52 780	50 718	55 949	58 353	55 646	
Apr	47 428	46 863	50 397	46 851	49 633	54 981	
May	49 500	48 708	52 144	53 723	56 064	56 846	
Jun	49 823	50 741	50 782	52 837	55 263	54 249	
Jul	53 245	53 733	53 102	52 376	56 409	59 270	
Aug	51 309	49 636	51 556	53 878	57 598	58 435	
Sep	51 231	51 222	51 276	53 383	54 436	54 467	
Oct	54 108	51 867	51 954	56 684	60 406	59 960	
Nov	50 912	51 759	54 103	58 309	60 417	57 915	
Dec	48 832	49 180	50 361	53 327	51 480	52 718	
Total	602 437	601 515	613 139	638 355	666 424	670 692	

1/ Figures for latest month are preliminary.

Table 2 – Year-on-year percentage change in motor trade sales at current prices

Month	2015	2016	2017	2018	2019	2020	2020 year-to-date
Jan	-1,9	-2,8	7,6	6,6	1,5	1,3	1,3
Feb	-0,7	6,5	1,5	4,0	-1,8	4,5	2,8
Mar	6,0	-3,9	10,3	4,3	-4,6		
Apr	-1,2	7,5	-7,0	5,9	10,8		
May	-1,6	7,1	3,0	4,4	1,4		
Jun	1,8	0,1	4,0	4,6	-1,8		
Jul	0,9	-1,2	-1,4	7,7	5,1		
Aug	-3,3	3,9	4,5	6,9	1,5		
Sep	0,0	0,1	4,1	2,0	0,1		
Oct	-4,1	0,2	9,1	6,6	-0,7		
Nov	1,7	4,5	7,8	3,6	-4,1		
Dec	0,7	2,4	5,9	-3,5	2,4		
Total	-0,2	1,9	4,1	4,4	0,6		

Table 3 – Seasonally adjusted motor trade sales at current prices

Month	R million				Month-on-month % change			
	2017	2018	2019	2020	2017	2018	2019	2020
Jan	52 460	54 637	55 193	55 890	1,1	-2,9	0,8	1,5
Feb	52 805	54 888	53 929	56 321	0,7	0,5	-2,3	0,8
Mar	53 524	57 750	55 282		1,4	5,2	2,5	
Apr	51 555	52 641	57 679		-3,7	-8,8	4,3	
May	52 761	54 909	55 812		2,3	4,3	-3,2	
Jun	52 381	55 642	56 137		-0,7	1,3	0,6	
Jul	51 859	54 925	56 681		-1,0	-1,3	1,0	
Aug	52 382	56 116	57 360		1,0	2,2	1,2	
Sep	53 604	56 174	55 659		2,3	0,1	-3,0	
Oct	54 430	56 916	56 178		1,5	1,3	0,9	
Nov	55 278	56 939	55 214		1,6	0,0	-1,7	
Dec	56 278	54 748	55 060		1,8	-3,8	-0,3	

Table 4 – Motor trade sales at current prices by type of activity (R million)

Type of activity	Sep-19	Oct-19	Nov-19	Dec-19	Jan-20	Feb-20 1/
New vehicle sales	13 668	15 239	14 417	12 785	13 275	13 502
Used vehicle sales	9 610	11 560	10 562	9 334	10 196	10 334
Workshop income	3 664	3 947	3 877	3 236	3 576	3 521
Income from the sales of accessories	9 056	10 067	9 776	7 912	9 134	9 141
Income from fuel sales	16 421	17 057	17 163	17 227	16 331	16 192
Income from convenience store sales 2/	2 048	2 091	2 120	2 224	2 010	2 011
Total	54 467	59 960	57 915	52 718	54 522	54 701

1/ Figures are preliminary.

2/ Includes 'other' sales and trading income.

Table 5 – Year-on-year percentage change in motor trade sales at current prices by type of activity

Type of activity	Sep-19	Oct-19	Nov-19	Dec-19	Jan-20	Feb-20
New vehicle sales	0,9	1,2	-6,3	5,9	-3,4	-1,8
Used vehicle sales	4,2	7,4	-2,8	10,4	3,4	7,1
Workshop income	6,7	0,3	0,6	6,4	-1,0	-2,5
Income from the sales of accessories	5,7	2,2	0,2	2,0	0,2	2,4
Income from fuel sales	-6,8	-8,7	-6,9	-3,5	5,8	11,5
Income from convenience store sales 1/	0,3	-1,4	-0,1	-3,3	-3,3	6,3
Total	0,1	-0,7	-4,1	2,4	1,3	4,5

1/ Includes 'other' sales and trading income.

Table 6 – Contribution of each type of activity to the year-on-year percentage change in motor trade sales at current prices

Type of activity	Sep-19	Oct-19	Nov-19	Dec-19	Jan-20	Feb-20
New vehicle sales	0,2	0,3	-1,6	1,4	-0,9	-0,5
Used vehicle sales	0,7	1,3	-0,5	1,7	0,6	1,3
Workshop income	0,4	0,0	0,0	0,4	-0,1	-0,2
Income from the sales of accessories	0,9	0,4	0,0	0,3	0,0	0,4
Income from fuel sales	-2,2	-2,7	-2,1	-1,2	1,7	3,2
Income from convenience store sales 1/	0,0	0,0	0,0	-0,1	-0,1	0,2
Total	0,1	-0,7	-4,1	2,4	1,3	4,5

1/ Includes 'other' sales and trading income.

Survey information

Introduction	<p>1 Statistics South Africa (Stats SA) conducts a monthly survey covering enterprises in the motor trade industry (see 4 below). This survey is based on a sample drawn from Stats SA's 2019 business sampling frame (BSF) that contains businesses registered at the South African Revenue Service (SARS) for value added tax (VAT). Stats SA continuously updates its BSF, which is linked to the SARS administrative data.</p> <p>2 In order to improve timeliness, some information for the latest month had to be estimated due to late response. These estimates will be revised in future statistical releases as soon as information becomes available. Published motor trade sales estimates exclude VAT.</p>
Purpose of the survey	<p>3 The results of the monthly motor trade sales survey are used to compile estimates of the gross domestic product (GDP) and its components, which are used in monitoring the state of the economy and formulation of economic policy. These statistics are also used in the analysis of comparative business and industry performance.</p>
Scope of the survey	<p>4 The survey collects information from a sample of enterprises in South Africa that are predominantly involved in motor trade. These enterprises include:</p> <ul style="list-style-type: none"> • motor vehicle dealers, filling stations and workshops; • motor cycle dealers; • spares and accessories; • tyre dealers; • automotive electricians; • radiator repairs; • panel beaters and spray painters; • 'other' specialised motor repair services; and • 'other' motor trade.
Classification	<p>5 The 1993 edition of the <i>Standard Industrial Classification of all Economic Activities</i> (SIC), Fifth Edition, Report No. 09-90-02, was used to classify the statistical units in the survey. The SIC is based on the 1990 <i>International Standard Industrial Classification of all Economic Activities</i> (ISIC) with suitable adaptations for local conditions. Each enterprise is classified to the industry which reflects its predominant activity. Statistics in this publication are presented at SIC group (four digits) level.</p>
Collection rate	<p>6 The preliminary collection rate for the survey on motor trade sales for February 2020 was 71,9%. The improved collection rate for January 2020 was 88,0%.</p>
Statistical unit	<p>7 The statistical unit for which information is compiled and published is the enterprise, defined as a legal unit or a combination of legal units that includes and directly controls all functions necessary to carry out its sales and service activities.</p>
Revised figures	<p>8 Revised figures are mainly due to late submission of data to Stats SA, or respondents reporting revisions or corrections to their figures. Preliminary figures, as indicated in the relevant tables, are subject to change and when revised will not be indicated as such.</p>
Related publications	<p>9 Users may also refer to the following publication available from Stats SA:</p> <ul style="list-style-type: none"> • <i>Stats in Brief</i> issued annually.

- Rounding-off of figures** 10 Where figures have been rounded off, discrepancies may occur between sums of the component items and the totals.
- Historical data** 11 Historical motor trade data are available on the Stats SA website. To access the data electronically, use the following link: [Click to download historical data](#)
- Past publications** 12 Past motor trade releases are available on the Stats SA website. To access the releases electronically, use the following link: [Click to download past releases](#)

Technical notes

- Survey methodology and design** 1 The survey is conducted monthly. Questionnaires are sent to a sample of 908 enterprises from a population of 10 660 enterprises. Completed questionnaires are required to be returned to Stats SA within 10 days after the end of the reference month. Email, fax and telephone reminders are used to follow up on non-respondents.
- 2 A stratified random sample was drawn in April 2019 from Stats SA's business sampling frame (BSF) at the SIC four-digit level. Strata were formed using a combination of Standard Industrial Classification and the measure of size classes for enterprises (see point 3 below).

The Neyman optimal allocation formula given below was used to allocate samples to each stratum.

$$n_h = n * (N_h * S_h) / [\sum (N_i * S_i)].$$

Neyman allocation formula not only allocates sample sizes to each stratum but also calculates the relative precision for each stratum as well as the relative precision for all strata. The relative precision for these strata was 3,8%.

- Class limits** 3 Each motor trade classification group (SIC at four digit level) is divided into four size groups. All large enterprises (size group one) are completely enumerated. Simple random sampling is applied to medium and small enterprises (size groups two, three and four). The total value of sales of the large enterprises (size group one) per classification group is added to the weighted totals of size groups two, three and four to reflect the total value of sales.

Measure of size classes (Rand)

Enterprise size	Size group	Lower limits	Upper limits
Very small	4	2 011 467	18 000 000
Small	3	18 000 001	85 500 000
Medium	2	85 500 001	175 500 000
Large	1	175 500 001	

- Sample weighting** 4 For those strata not completely enumerated, the weights to produce estimates are the inverse ratio of the sampling fraction, modified to take account of non-response in the survey. Stratum estimates are calculated and then aggregated with the completely enumerated stratum to form classification group estimates. These procedures are consistent with international best practice.

Seasonal adjustment	5	Seasonally adjusted estimates are generated each month using the X-12-ARIMA Seasonal Adjustment Program developed by the US Bureau of the Census. Seasonal adjustment is a means of removing the estimated effects of normal seasonal variation from the series so that the effects of other influences on the series can be recognised more clearly. Seasonal adjustment does not aim to remove irregular or non-seasonal influences which may be present in any particular month. Influences that are volatile or unsystematic can still make it difficult to interpret the movement of the series even after adjustment for seasonal variations. Therefore the month-to-month movements of seasonally adjusted estimates may not be reliable indicators of trend behaviour. The X-12-ARIMA procedure for motor trade sales is described in more detail on the Stats SA website at: Click to download seasonal adjustment motor trade sales August 2017
Trend cycle	6	The trend is the long-term pattern or movement of a time series. The X-12-ARIMA Seasonal Adjustment Program is used for smoothing seasonally adjusted estimates to estimates of the underlying trend cycle.
Reliability of estimates	7	Data presented in this publication are based on information obtained from a sample and are, therefore, subject to sampling variability; that is, they may differ from the figures that would have been produced if the data had been obtained from all enterprises in the motor trade industry in South Africa. Estimates are subject to sampling and non-sampling errors.
	8	Inaccuracies may occur because of imperfections in reporting by enterprises and errors made in the collection and processing of the data. Inaccuracies of this kind are referred to as non-sampling errors. Every effort is made to minimise non-sampling errors by careful design of questionnaires, testing them in pilot studies, editing reported data and implementing efficient operating procedures. Fluctuations may occur in consecutive months as a result of seasonal and economic factors.
Month-on-month percentage change	9	The month-on-month percentage change in a variable for any given month is the change between that month and the previous month, expressed as a percentage of the latter.
Year-on-year percentage change	10	The year-on-year percentage change in a variable for any given period is the change between that period and the corresponding period of the previous year, expressed as a percentage of the latter.
Contribution (percentage points)	11	The contribution (percentage points) to the year-on-year percentage change is calculated by multiplying the percentage change of each type of activity by its corresponding weight, divided by 100. The weight is the percentage contribution of each type of activity to total motor trade sales in the corresponding period of the previous year.

Glossary

Enterprise

An enterprise is a legal entity or a combination of legal units that includes and directly controls all functions necessary to carry out its sales activities.

Industry

An industry is made up of enterprises engaged in the same or similar kinds of economic activity. Industries are defined in the *System of National Accounts (SNA)* in the same way as in the *Standard Industrial Classification of all Economic Activities (SIC)*, Fifth Edition, Report No. 09-90-02 of January 1993.

Symbols and abbreviations

BSF	Business sampling frame
GDP	Gross domestic product
ISIC	International Standard Industrial Classification
IT	Income tax
Rm	Rand million
SIC	Standard Industrial Classification of all Economic Activities
SARS	South African Revenue Service
Stats SA	Statistics South Africa
VAT	Value added tax

Technical enquiries

Peter Makota

Telephone number: (012) 310 4837
Email: petermak@statssa.gov.za

Keshnee Naidoo

Telephone number: (012) 310 8423
(083) 689 5341
Email: keshneen@statssa.gov.za

General information

Stats SA publishes approximately 300 different statistical releases each year. It is not economically viable to produce them in more than one of South Africa's eleven official languages. Since the releases are used extensively, not only locally but also by international economic and social-scientific communities, Stats SA releases are published in English only.

Stats SA has copyright on this publication. Users may apply the information as they wish, provided that they acknowledge Stats SA as the source of the basic data wherever they process, apply, utilise, publish or distribute the data; and also that they specify that the relevant application and analysis (where applicable) result from their own processing of the data.

Advance release calendar

A release calendar is disseminated on www.statssa.gov.za

Stats SA products

A complete set of Stats SA publications is available at the Stats SA Library and the following libraries:

- National Library of South Africa, Pretoria Division
- National Library of South Africa, Cape Town Division
- Natal Society Library, Pietermaritzburg
- Library of Parliament, Cape Town
- Bloemfontein Public Library
- Johannesburg Public Library
- Eastern Cape Library Services, King William's Town
- Central Regional Library, Polokwane
- Central Reference Library, Mbombela
- Central Reference Collection, Kimberley
- Central Reference Library, Mmabatho

Stats SA also provides a subscription service.

Electronic services

A large range of data is available via online services. For more detail about our electronic services, contact Stats SA's user information service at (012) 310 8600.

You can visit us on the internet at: www.statssa.gov.za

General enquiries

User information services	Telephone number: (012) 310 8600 Email address: info@statssa.gov.za
---------------------------	---

Postal address	Private Bag X44, Pretoria, 0001
----------------	---------------------------------

Produced by Stats SA