



The South Africa I know, the home I understand



---

# Statistical release

## P6343.2

# Motor trade sales (Preliminary)

## December 2013

**Embargoed until:  
13 February 2014  
14:30**

**Enquiries:**

User Information Services  
(012) 310 8600

**Forthcoming issue:**

January 2014

**Expected release date:**

20 March 2014

**Contents**

**Sales at current prices: results for December 2013**..... **2**

Table A – Key growth rates in motor trade sales at current prices..... 2

Table B – Motor trade sales at current prices for the latest three months by type of activity..... 2

Figure 1 – Motor trade sales at current prices..... 3

Figure 2 – Motor trade sales at current prices: year-on-year percentage change ..... 3

**Tables**..... **4**

Table 1 – Motor trade sales at current prices (R million)..... 4

Table 2 – Year-on-year percentage change in motor trade sales at current prices ..... 4

Table 3 – Seasonally adjusted motor trade sales at current prices..... 4

Table 4 – Motor trade sales at current prices by type of activity (R million) ..... 5

Table 5 – Year-on-year percentage change in motor trade sales at current prices by type of activity ..... 5

Table 6 – Contribution of each type of activity to the year-on-year percentage change in motor trade sales at current prices ..... 5

**Survey information** ..... **6**

**Technical notes**..... **7**

**Glossary**..... **9**

**Technical enquiries** ..... **9**

**General information**..... **10**

**Sales at current prices: results for December 2013**

**Table A – Key growth rates in motor trade sales at current prices**

	Jul-13	Aug-13	Sep-13	Oct-13	Nov-13	Dec-13
Year-on-year % change, unadjusted	13,1	7,4	6,3	4,6	1,3	2,6
Month-on-month % change, seasonally adjusted	5,9	-2,5	-1,4	0,8	-1,0	-2,6
3-month % change, seasonally adjusted 1/	1,9	0,7	1,9	-0,3	-0,9	-2,5

1/ Percentage change between the previous 3 months and the 3 months ending in the month indicated.

Measured in nominal terms (current prices), motor trade sales increased by 2,6% year-on-year in December 2013. The highest annual growth rates were recorded for workshop income (5,1%), fuel sales (4,3%), sales of accessories (2,8%) and used vehicle sales (2,3%) – see Table 5.

Seasonally adjusted motor trade sales decreased by 2,6% in December 2013 compared with November 2013. This followed month-on-month changes of -1,0% in November 2013 and 0,8% in October 2013.

Seasonally adjusted motor trade sales decreased by 2,5% in the fourth quarter of 2013 compared with the previous quarter.

**Table B – Motor trade sales at current prices for the latest three months by type of activity**

Type of activity	Oct – Dec 2012 (R million)	Weight	Oct – Dec 2013 (R million)	% change between Oct – Dec 2012 and Oct – Dec 2013	Contribution (% points) to the total % change
New vehicle sales	34 492	27,3	35 439	2,7	0,7
Used vehicle sales	22 360	17,7	22 447	0,4	0,1
Workshop income	7 592	6,0	7 739	1,9	0,1
Income from the sales of accessories	21 253	16,8	21 724	2,2	0,4
Income from fuel sales	34 908	27,6	36 902	5,7	1,6
Income from convenience store sales 1/	5 755	4,6	5 697	-1,0	0,0
<b>Total</b>	<b>126 360</b>	<b>100,0</b>	<b>129 948</b>	<b>2,8</b>	<b>2,8</b>

1/ Includes 'other' sales and trading income.

Motor trade sales increased by 2,8% in the fourth quarter of 2013 compared with the fourth quarter of 2012. The major contributors to this increase were:

- fuel sales (5,7% and contributing 1,6 percentage points);
- new vehicle sales (2,7% and contributing 0,7 of a percentage point); and
- sales of accessories (2,2% and contributing 0,4 of a percentage point) – see Table B.

Figure 1 – Motor trade sales at current prices

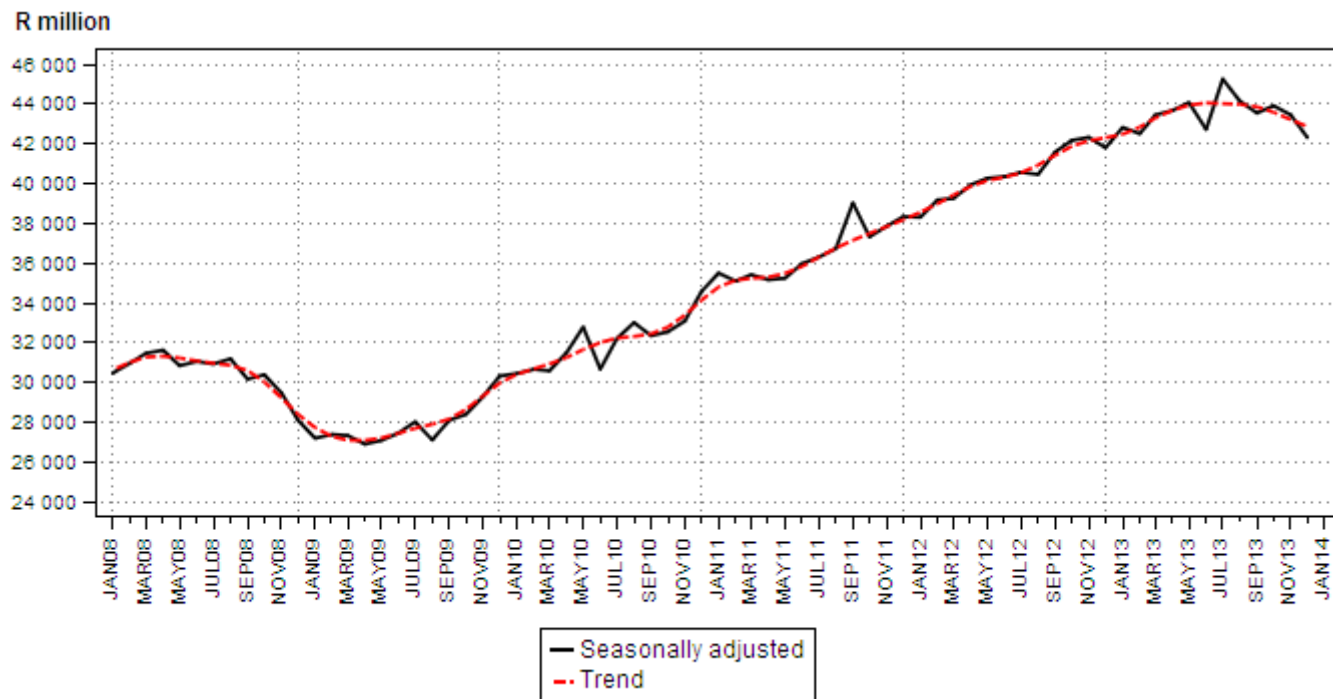
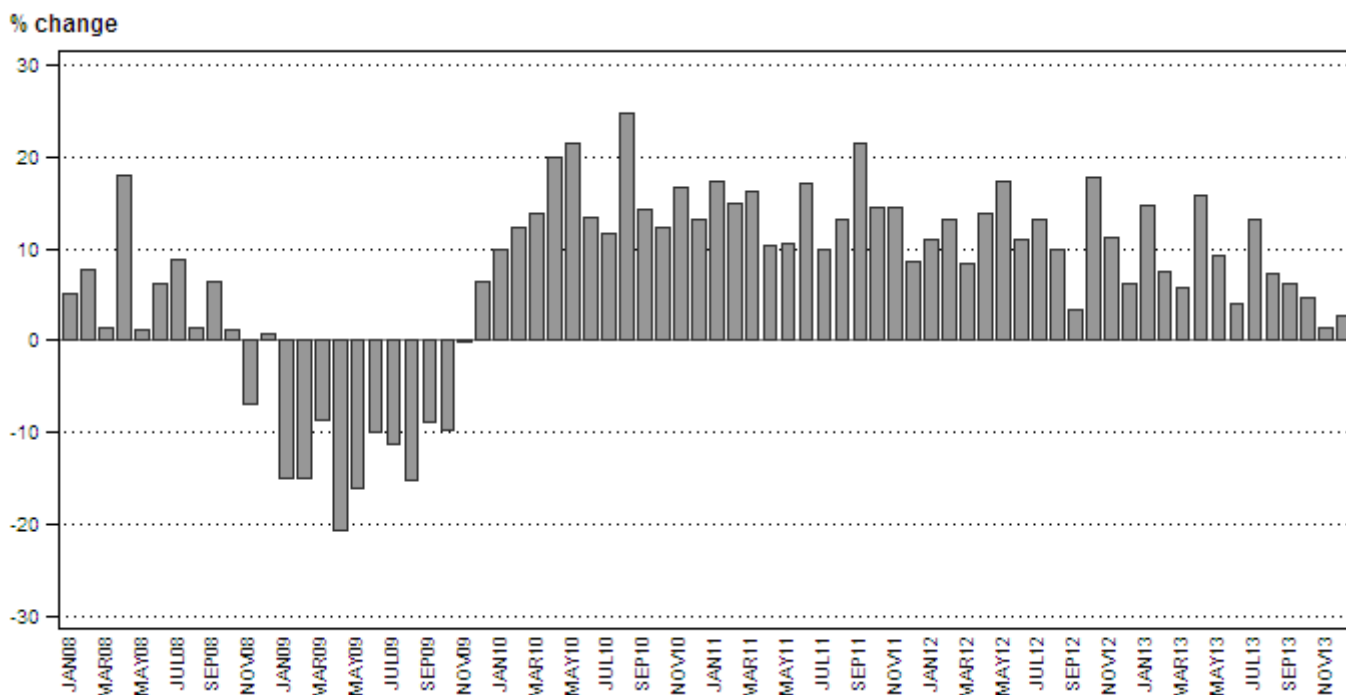


Figure 2 – Motor trade sales at current prices: year-on-year percentage change



PJ Lehohla  
 Statistician-General

**Tables**

**Table 1 – Motor trade sales at current prices (R million)**

Month	2007	2008	2009	2010	2011	2012	2013 1/
Jan	28 254	29 715	25 250	27 784	32 611	36 190	41 495
Feb	28 418	30 630	26 039	29 243	33 599	38 021	40 891
Mar	30 368	30 790	28 114	31 984	37 168	40 302	42 659
Apr	26 192	30 912	24 528	29 418	32 438	36 913	42 738
May	30 473	30 830	25 830	31 359	34 681	40 701	44 494
Jun	28 185	29 920	26 962	30 567	35 783	39 719	41 293
Jul	30 259	32 932	29 218	32 614	35 852	40 562	45 863
Aug	31 048	31 459	26 648	33 257	37 660	41 370	44 442
Sep	28 440	30 247	27 587	31 497	38 234	39 496	41 998
Oct	31 360	31 701	28 600	32 138	36 829	43 367	45 362
Nov	31 814	29 583	29 524	34 411	39 411	43 833	44 412
Dec	28 065	28 299	30 104	34 034	36 916	39 160	40 174
<b>Total</b>	<b>352 876</b>	<b>367 018</b>	<b>328 404</b>	<b>378 306</b>	<b>431 182</b>	<b>479 634</b>	<b>515 821</b>

1/ Latest month is preliminary.

**Table 2 – Year-on-year percentage change in motor trade sales at current prices**

Month	2008	2009	2010	2011	2012	2013	2013 year-to-date
Jan	5,2	-15,0	10,0	17,4	11,0	14,7	14,7
Feb	7,8	-15,0	12,3	14,9	13,2	7,5	11,0
Mar	1,4	-8,7	13,8	16,2	8,4	5,8	9,2
Apr	18,0	-20,7	19,9	10,3	13,8	15,8	10,8
May	1,2	-16,2	21,4	10,6	17,4	9,3	10,5
Jun	6,2	-9,9	13,4	17,1	11,0	4,0	9,4
Jul	8,8	-11,3	11,6	9,9	13,1	13,1	9,9
Aug	1,3	-15,3	24,8	13,2	9,9	7,4	9,6
Sep	6,4	-8,8	14,2	21,4	3,3	6,3	9,2
Oct	1,1	-9,8	12,4	14,6	17,8	4,6	8,7
Nov	-7,0	-0,2	16,6	14,5	11,2	1,3	8,0
Dec	0,8	6,4	13,1	8,5	6,1	2,6	7,5
<b>Total</b>	<b>4,0</b>	<b>-10,5</b>	<b>15,2</b>	<b>14,0</b>	<b>11,2</b>	<b>7,5</b>	

**Table 3 – Seasonally adjusted motor trade sales at current prices**

Month	R million				Month-on-month % change			
	2010	2011	2012	2013	2010	2011	2012	2013
Jan	30 444	35 497	38 308	42 826	0,4	2,7	-0,1	2,4
Feb	30 659	35 091	39 174	42 509	0,7	-1,1	2,3	-0,7
Mar	30 583	35 413	39 256	43 449	-0,2	0,9	0,2	2,2
Apr	31 495	35 163	39 932	43 674	3,0	-0,7	1,7	0,5
May	32 779	35 238	40 268	44 073	4,1	0,2	0,8	0,9
Jun	30 665	35 972	40 347	42 725	-6,4	2,1	0,2	-3,1
Jul	32 200	36 296	40 568	45 259	5,0	0,9	0,5	5,9
Aug	33 006	36 724	40 461	44 147	2,5	1,2	-0,3	-2,5
Sep	32 346	39 028	41 588	43 548	-2,0	6,3	2,8	-1,4
Oct	32 542	37 321	42 175	43 915	0,6	-4,4	1,4	0,8
Nov	33 083	37 853	42 326	43 455	1,7	1,4	0,4	-1,0
Dec	34 568	38 332	41 802	42 322	4,5	1,3	-1,2	-2,6

**Table 4 – Motor trade sales at current prices by type of activity (R million)**

Type of activity	Jul-13	Aug-13	Sep-13	Oct-13	Nov-13	Dec-13 1/
New vehicle sales	13 644	12 831	11 571	12 603	12 236	10 600
Used vehicle sales	7 638	7 644	7 285	8 166	7 708	6 573
Workshop income	2 918	2 577	2 445	2 730	2 719	2 290
Income from the sales of accessories	7 831	7 366	6 835	7 819	7 679	6 226
Income from fuel sales	12 056	12 267	12 175	12 226	12 192	12 484
Income from convenience store sales 2/	1 775	1 759	1 686	1 817	1 878	2 002
<b>Total</b>	<b>45 863</b>	<b>44 442</b>	<b>41 998</b>	<b>45 362</b>	<b>44 412</b>	<b>40 174</b>

1/ Preliminary.

2/ Includes 'other' sales and trading income.

**Table 5 – Year-on-year percentage change in motor trade sales at current prices by type of activity**

Type of activity	Jul-13	Aug-13	Sep-13	Oct-13	Nov-13	Dec-13
New vehicle sales	18,3	8,1	6,6	6,2	0,8	1,1
Used vehicle sales	5,4	1,7	2,8	1,4	-2,2	2,3
Workshop income	17,2	2,8	6,7	2,6	-1,2	5,1
Income from the sales of accessories	10,9	1,0	1,9	4,7	-0,6	2,8
Income from fuel sales	14,8	17,0	13,3	6,8	6,2	4,3
Income from convenience store sales 1/	3,0	3,0	-6,7	-2,5	1,2	-1,7
<b>Total</b>	<b>13,1</b>	<b>7,4</b>	<b>6,3</b>	<b>4,6</b>	<b>1,3</b>	<b>2,6</b>

1/ Includes 'other' sales and trading income.

**Table 6 – Contribution of each type of activity to the year-on-year percentage change in motor trade sales at current prices**

Type of activity	Jul-13	Aug-13	Sep-13	Oct-13	Nov-13	Dec-13
New vehicle sales	5,2	2,3	1,8	1,7	0,2	0,3
Used vehicle sales	1,0	0,3	0,5	0,3	-0,4	0,4
Workshop income	1,0	0,2	0,4	0,2	-0,1	0,3
Income from the sales of accessories	1,9	0,2	0,3	0,8	-0,1	0,4
Income from fuel sales	3,8	4,3	3,6	1,8	1,6	1,3
Income from convenience store sales 1/	0,1	0,1	-0,3	-0,1	0,1	-0,1
<b>Total</b>	<b>13,1</b>	<b>7,4</b>	<b>6,3</b>	<b>4,6</b>	<b>1,3</b>	<b>2,6</b>

1/ Includes 'other' sales and trading income.

## Survey information

<b>Introduction</b>	<b>1</b>	Statistics South Africa (Stats SA) conducts a monthly survey covering enterprises in the motor trade industry (see 4 below). This survey is based on a sample drawn from Stats SA's 2013 business sampling frame (BSF) that contains businesses registered at the South African Revenue Service (SARS) for value added tax (VAT). Stats SA continuously updates its BSF, which is linked to the SARS administrative data.
	<b>2</b>	In order to improve timeliness, some information for the latest month had to be estimated due to late response. These estimates will be revised in future statistical releases as soon as information becomes available. Published motor trade sales estimates exclude VAT.
<b>Purpose of the survey</b>	<b>3</b>	The results of the monthly motor trade sales survey are used to compile estimates of the gross domestic product (GDP) and its components, which are used in monitoring the state of the economy and formulation of economic policy. These statistics are also used in the analysis of comparative business and industry performance.
<b>Scope of the survey</b>	<b>4</b>	The survey collects information from a sample of enterprises in South Africa that are predominantly involved in motor trade. These enterprises include: <ul style="list-style-type: none"><li>• motor vehicle dealers, filling stations and workshops;</li><li>• motor cycle dealers;</li><li>• spares and accessories;</li><li>• tyre dealers;</li><li>• automotive electricians;</li><li>• radiator repairs;</li><li>• panel beaters and spray painters;</li><li>• 'other' specialised motor repair services; and</li><li>• 'other' motor trade.</li></ul>
<b>Classification</b>	<b>5</b>	The 1993 edition of the <i>Standard Industrial Classification of all Economic Activities (SIC)</i> , Fifth Edition, Report No. 09-90-02, was used to classify the statistical units in the survey. The SIC is based on the 1990 <i>International Standard Industrial Classification of all Economic Activities (ISIC)</i> with suitable adaptations for local conditions. Each enterprise is classified to the industry which reflects its predominant activity. Statistics in this publication are presented at SIC group (four digits) level.
<b>Collection rate</b>	<b>6</b>	The preliminary collection rate for the survey on motor trade sales for December 2013 was 77,8%. The improved collection rate for November 2013 was 81,0%.
<b>Statistical unit</b>	<b>7</b>	The statistical unit for which information is compiled and published is the enterprise, defined as a legal unit or a combination of legal units that includes and directly controls all functions necessary to carry out its sales and service activities.
<b>Revised figures</b>	<b>8</b>	Revised figures are mainly due to late submission of data to Stats SA, or respondents reporting revisions or corrections to their figures. Preliminary figures, as indicated in the relevant tables, are subject to change and when revised will not be indicated as such.
<b>Related publications</b>	<b>9</b>	Users may also refer to the following publications available from Stats SA: <ul style="list-style-type: none"><li>• <i>Bulletin of Statistics</i> issued quarterly; and</li><li>• <i>SA Statistics</i> issued annually.</li></ul>

- Rounding-off of figures**     10     Where figures have been rounded off, discrepancies may occur between sums of the component items and the totals.
- Historical data**     11     Historical motor trade data are available on the Stats SA webpage. To access the data electronically, use the following link:  
[http://beta2.statssa.gov.za/?page\\_id=1849](http://beta2.statssa.gov.za/?page_id=1849)
- Past publications**     12     Past motor trade releases are available on the Stats SA webpage. To access the releases electronically, use the following link:  
[http://beta2.statssa.gov.za/?page\\_id=1866&PPN=P6343.2&SCH=5722](http://beta2.statssa.gov.za/?page_id=1866&PPN=P6343.2&SCH=5722)

**Technical notes**

- Survey methodology and design**     1     The survey is conducted monthly. Questionnaires are sent to a sample of about 850 enterprises from a population of about 11 000 enterprises. Completed questionnaires are required to be returned to Stats SA within 10 days after the end of the reference month. Email, fax and telephone reminders are used to follow up on non-respondents.
- 2     A stratified random sample was drawn in April 2013 from Stats SA’s business sampling frame (BSF) at the SIC four-digit level. Strata were formed using a combination of Standard Industrial Classification and the measure of size classes for enterprises (see point 3 below).

The Neyman optimal allocation formula given below was used to allocate samples to each stratum.

$$n_h = \frac{N_h S_h}{\sum N_h S_h}$$

$N_h$  and  $S_h$  are the stratum population size and the stratum variance respectively.

Neyman allocation formula not only allocates sample sizes to each stratum but also calculates the relative precision for each stratum as well as the relative precision for all strata. The relative precision for these strata did not exceed 3,5%.

- Class limits**     3     Each motor trade classification group (SIC at four digit level) is divided into four size groups. All large enterprises (size group one) are completely enumerated. Simple random sampling is applied to medium and small enterprises (size groups two, three and four). The total value of sales of the large enterprises (size group one) per classification group is added to the weighted totals of size groups two, three and four to reflect the total value of sales.

**Measure of size classes (Rand)**

Enterprise size	Size group	Lower limits	Upper limits
Very small	4	0	18 000 000
Small	3	18 000 001	85 500 000
Medium	2	85 500 001	175 500 000
Large	1	175 500 001	

- Sample weighting**     4     For those strata not completely enumerated, the weights to produce estimates are the inverse ratio of the sampling fraction, modified to take account of non-response in the survey. Stratum estimates are calculated and then aggregated with the completely enumerated stratum to form classification group estimates. These procedures are consistent with international best practice.



<b>Seasonal adjustment</b>	<b>5</b>	Seasonally adjusted estimates are generated each month using the X-12-ARIMA Seasonal Adjustment Program developed by the US Bureau of the Census, 1968. Seasonal adjustment is a means of removing the estimated effects of normal seasonal variation from the series so that the effects of other influences on the series can be recognised more clearly. Seasonal adjustment does not aim to remove irregular or non-seasonal influences which may be present in any particular month. Influences that are volatile or unsystematic can still make it difficult to interpret the movement of the series even after adjustment for seasonal variations. Therefore the month-to-month movements of seasonally adjusted estimates may not be reliable indicators of trend behaviour. The X-12-ARIMA procedure for motor trade sales is described in more detail on the Stats SA website at: <a href="http://www.statssa.gov.za/Publications/P63432/Seasonal_adjustment_motor_Jun13.pdf">http://www.statssa.gov.za/Publications/P63432/Seasonal_adjustment_motor_Jun13.pdf</a>
<b>Trend cycle</b>	<b>6</b>	The trend is the long-term pattern or movement of a time series. The X-12-ARIMA Seasonal Adjustment Program is used for smoothing seasonally adjusted estimates to estimates of the underlying trend cycle.
<b>Reliability of estimates</b>	<b>7</b>	Data presented in this publication are based on information obtained from a sample and are, therefore, subject to sampling variability; that is, they may differ from the figures that would have been produced if the data had been obtained from all enterprises in the motor trade industry in South Africa. Estimates are subject to sampling and non-sampling errors.
	<b>8</b>	Inaccuracies may occur because of imperfections in reporting by enterprises and errors made in the collection and processing of the data. Inaccuracies of this kind are referred to as non-sampling errors. Every effort is made to minimise non-sampling errors by careful design of questionnaires, testing them in pilot studies, editing reported data and implementing efficient operating procedures. Fluctuations may occur in consecutive months as a result of seasonal and economic factors.
<b>Month-on-month percentage change</b>	<b>9</b>	The month-on-month percentage change in a variable for any given month is the change between that month and the previous month, expressed as a percentage of the latter.
<b>Year-on-year percentage change</b>	<b>10</b>	The year-on-year percentage change in a variable for any given period is the change between that period and the corresponding period of the previous year, expressed as a percentage of the latter.
<b>Contribution (percentage points)</b>	<b>11</b>	The contribution (percentage points) to the year-on-year percentage change is calculated by multiplying the percentage change of each type of activity by its corresponding weight, divided by 100. The weight is the percentage contribution of each type of activity to total motor trade sales in the corresponding period of the previous year.

## Glossary

### Enterprise

An enterprise is a legal entity or a combination of legal units that includes and directly controls all functions necessary to carry out its sales activities.

### Industry

An industry is made up of enterprises engaged in the same or similar kinds of economic activity. Industries are defined in the *System of National Accounts (SNA)* in the same way as in the *Standard Industrial Classification of all Economic Activities, Fifth Edition, Report No. 09-90-02 of January 1993 (SIC)*.

### Symbols and abbreviations

BSF	Business sampling frame
GDP	Gross domestic product
ISIC	International Standard Industrial Classification
IT	Income tax
Rm	Rand million
SIC	Standard Industrial Classification of all Economic Activities
SARS	South African Revenue Service
Stats SA	Statistics South Africa
VAT	Value added tax

## Technical enquiries

### Peter Makota

Telephone number: (012) 310 4837  
Email: [petermak@statssa.gov.za](mailto:petermak@statssa.gov.za)

### Keshnee Govender

Telephone number: (012) 310 8423  
Email: [keshneeg@statssa.gov.za](mailto:keshneeg@statssa.gov.za)

## General information

Stats SA publishes approximately 300 different statistical releases each year. It is not economically viable to produce them in more than one of South Africa's eleven official languages. Since the releases are used extensively, not only locally but also by international economic and social-scientific communities, Stats SA releases are published in English only.

Stats SA has copyright on this publication. Users may apply the information as they wish, provided that they acknowledge Stats SA as the source of the basic data wherever they process, apply, utilise, publish or distribute the data; and also that they specify that the relevant application and analysis (where applicable) result from their own processing of the data.

## Advance release calendar

An advance release calendar is disseminated on [www.statssa.gov.za](http://www.statssa.gov.za)

## Stats SA products

A complete set of Stats SA publications is available at the Stats SA Library and the following libraries:

National Library of South Africa, Pretoria Division  
National Library of South Africa, Cape Town Division  
Natal Society Library, Pietermaritzburg  
Library of Parliament, Cape Town  
Bloemfontein Public Library  
Johannesburg Public Library  
Eastern Cape Library Services, King William's Town  
Central Regional Library, Polokwane  
Central Reference Library, Nelspruit  
Central Reference Collection, Kimberley  
Central Reference Library, Mmabatho

Stats SA also provides a subscription service.

## Electronic services

A large range of data is available via online services. For more detail about our electronic services, contact Stats SA's user information service at (012) 310 8600.

You can visit us on the internet at: [www.statssa.gov.za](http://www.statssa.gov.za)

## General enquiries

User information services	Telephone number: (012) 310 8600 Email address: <a href="mailto:info@statssa.gov.za">info@statssa.gov.za</a>
Orders/subscription services	Telephone number: (012) 310 8358 Email address: <a href="mailto:magdaj@statssa.gov.za">magdaj@statssa.gov.za</a>
Postal address	Private Bag X44, Pretoria, 0001

*Produced by Stats SA*