



The South Africa I know, the home I understand



Statistical release

P6242.1

Retail trade sales (Preliminary)

September 2014

**Embargoed until:
12 November 2014
13:00**

Enquiries:

User Information Services
(012) 310 8600

Forthcoming issue:	Expected release date:
October 2014	10 December 2014

Contents

Sales at constant 2012 prices: results for September 20142

Table A – Key growth rates in retail trade sales at constant 2012 prices.....2

Table B – Retail trade sales at constant 2012 prices for the latest three months by type of retailer2

Figure 1 – Retail trade sales at constant 2012 prices3

Figure 2 – Retail trade sales at constant 2012 prices: year-on-year percentage change.....3

Sales at current prices: results for September 2014.....4

Table C – Key growth rates in retail trade sales at current prices.....4

Table D – Retail trade sales at current prices for the latest three months by type of retailer4

Tables.....5

Table 1 – Retail trade sales at constant 2012 prices (R million)5

Table 2 – Year-on-year percentage change in retail trade sales at constant 2012 prices.....5

Table 3 – Seasonally adjusted retail trade sales at constant 2012 prices5

Table 4 – Retail trade sales at constant 2012 prices by type of retailer (R million)6

Table 5 – Year-on-year percentage change in retail trade sales at constant 2012 prices by type of retailer6

Table 6 – Contribution of each type of retailer to the year-on-year percentage change in retail trade sales at
constant 2012 prices (percentage points)6

Table 7 – Retail trade sales at current prices (R million).....7

Table 8 – Year-on-year percentage change in retail trade sales at current prices7

Table 9 – Seasonally adjusted retail trade sales at current prices7

Table 10 – Retail trade sales at current prices by type of retailer (R million)8

Table 11 – Year-on-year percentage change in retail trade sales at current prices by type of retailer.....8

Table 12 – Contribution of each type of retailer to the year-on-year percentage change in retail trade sales at
current prices (percentage points)8

Survey information.....9

Technical notes11

Glossary.....13

Technical enquiries.....13

General information14

Sales at constant 2012 prices: results for September 2014

Table A – Key growth rates in retail trade sales at constant 2012 prices

	Apr-14	May-14	Jun-14	Jul-14	Aug-14	Sep-14
Year-on-year % change, unadjusted	2,2	2,8	-0,9	2,4	2,0	2,3
Month-on-month % change, seasonally adjusted	0,7	0,8	-0,9	1,2	0,5	-0,8
3-month % change, seasonally adjusted 1/	-0,2	-0,4	0,1	0,6	0,7	0,9

1/ Percentage change between the previous 3 months and the 3 months ending in the month indicated.

Measured in real terms (constant 2012 prices), retail trade sales increased by 2,3% year-on-year in September 2014. The highest annual growth rates were recorded for:

- retailers in hardware, paint and glass (6,1%);
- retailers in pharmaceuticals and medical goods, cosmetics and toiletries (4,6%);
- retailers in household furniture, appliances and equipment (3,6%); and
- all ‘other’ retailers (3,6%) – see Table 5.

The main contributors to the 2,3% increase were general dealers (contributing 0,8 of a percentage point) and retailers in hardware, paint and glass (contributing 0,5 of a percentage point) – see Table 6.

Seasonally adjusted retail trade sales decreased by 0,8% month-on-month in September 2014. This followed month-on-month changes of 0,5% in August 2014 and 1,2% in July 2014.

Seasonally adjusted retail trade sales increased by 0,9% in the third quarter of 2014 compared with the previous quarter.

Table B – Retail trade sales at constant 2012 prices for the latest three months by type of retailer

Type of retailer	Jul – Sep 2013 (R million)	Weight	Jul – Sep 2014 (R million)	% change between Jul – Sep 2013 and Jul – Sep 2014	Contribution (% points) to the total % change
General dealers	68 897	41,3	70 654	2,6	1,1
Food, beverages and tobacco in specialised stores	14 779	8,9	14 814	0,2	0,0
Pharmaceuticals and medical goods, cosmetics and toiletries	11 960	7,2	12 216	2,1	0,2
Textiles, clothing, footwear and leather goods	33 243	19,9	33 714	1,4	0,3
Household furniture, appliances and equipment	8 467	5,1	8 618	1,8	0,1
Hardware, paint and glass	12 962	7,8	13 426	3,6	0,3
All other retailers	16 562	9,9	17 120	3,4	0,3
Total	166 870	100,0	170 562	2,2	2,2

Retail trade sales increased by 2,2% in the third quarter of 2014 compared with the third quarter of 2013. The main contributor to this increase was general dealers (2,6% and contributing 1,1 percentage points) – see Table B.

Figure 1 – Retail trade sales at constant 2012 prices

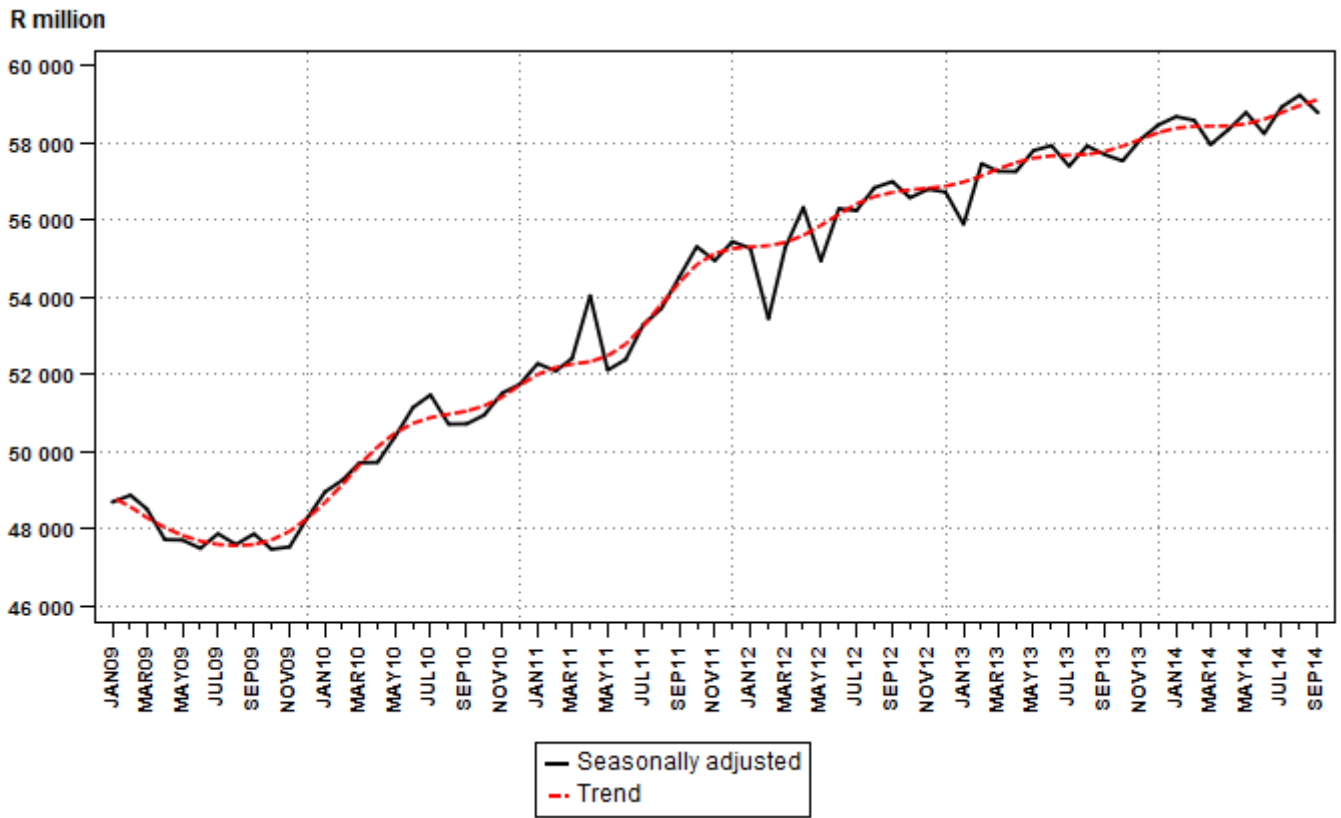
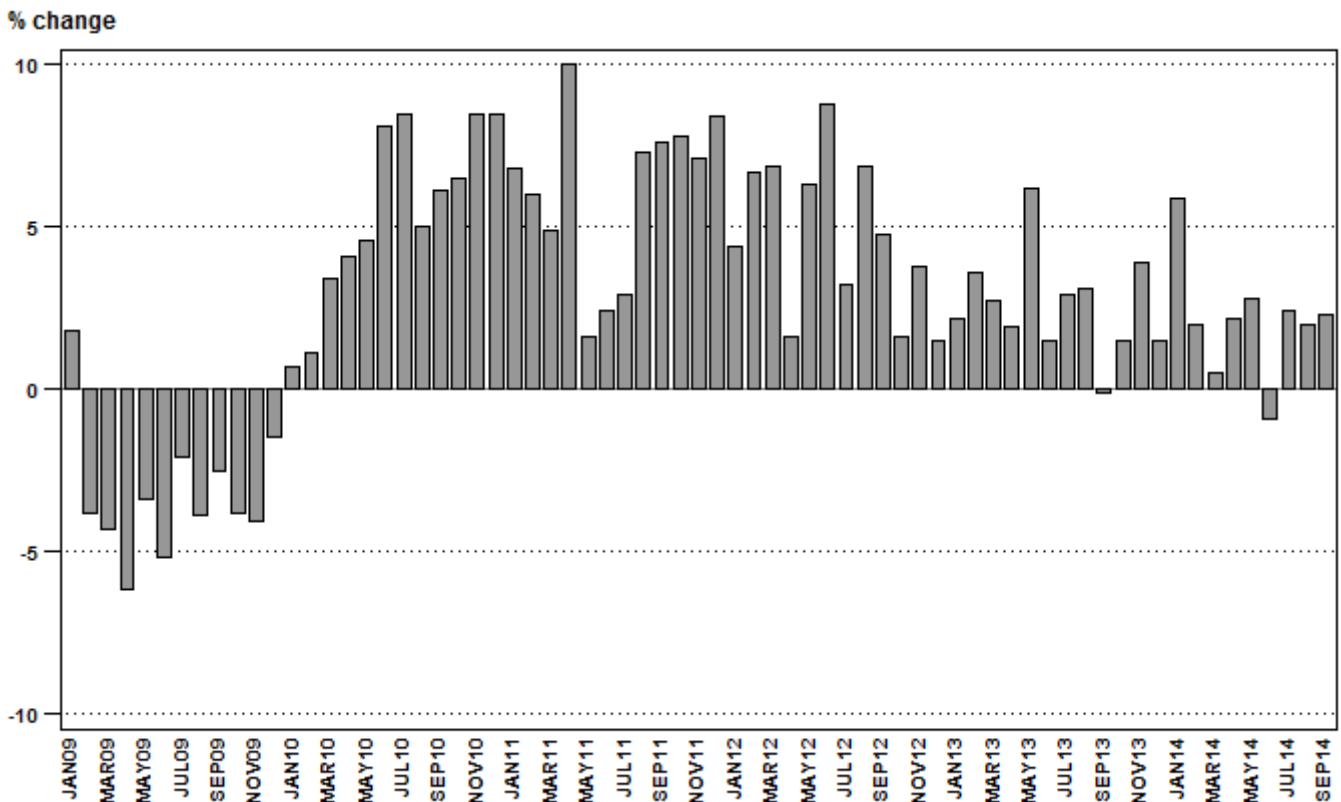


Figure 2 – Retail trade sales at constant 2012 prices: year-on-year percentage change



Sales at current prices: results for September 2014

Table C – Key growth rates in retail trade sales at current prices

	Apr-14	May-14	Jun-14	Jul-14	Aug-14	Sep-14
Year-on-year % change, unadjusted	7,3	8,5	4,8	8,5	8,2	8,0
Month-on-month % change, seasonally adjusted	1,3	1,3	-0,3	1,6	1,1	-0,6
3-month % change, seasonally adjusted 1/	1,6	1,4	1,8	2,3	2,4	2,3

1/ Percentage change between the previous 3 months and the 3 months ending in the month indicated.

Table D – Retail trade sales at current prices for the latest three months by type of retailer

Type of retailer	Jul – Sep 2013 (R million)	Weight	Jul – Sep 2014 (R million)	% change between Jul – Sep 2013 and Jul – Sep 2014	Contribution (% points) to the total % change
General dealers	72 125	41,5	79 001	9,5	3,9
Food, beverages and tobacco in specialised stores	15 571	9,0	16 779	7,8	0,7
Pharmaceuticals and medical goods, cosmetics and toiletries	12 409	7,1	13 347	7,6	0,5
Textiles, clothing, footwear and leather goods	34 335	19,8	36 730	7,0	1,4
Household furniture, appliances and equipment	8 469	4,9	8 759	3,4	0,2
Hardware, paint and glass	13 596	7,8	14 908	9,6	0,7
All other retailers	17 190	9,9	18 444	7,3	0,7
Total	173 692	100,0	187 967	8,2	8,2

**PJ Lehohla
Statistician-General**

Tables

Table 1 – Retail trade sales at constant 2012 prices (R million)

Month	2008	2009	2010	2011	2012	2013	2014 1/
Jan	44 869	45 690	45 993	49 116	51 296	52 405	55 483
Feb	46 368	44 601	45 076	47 767	50 947	52 790	53 838
Mar	48 733	46 660	48 266	50 650	54 136	55 595	55 847
Apr	48 599	45 564	47 427	52 160	53 003	54 032	55 242
May	48 434	46 797	48 969	49 760	52 903	56 165	57 716
Jun	48 141	45 620	49 296	50 479	54 945	55 762	55 256
Jul	47 304	46 320	50 268	51 744	53 386	54 926	56 242
Aug	47 345	45 514	47 812	51 291	54 842	56 565	57 688
Sep	47 489	46 317	49 130	52 880	55 425	55 379	56 632
Oct	49 607	47 739	50 857	54 805	55 673	56 504	
Nov	51 074	48 963	53 119	56 876	59 050	61 354	
Dec	66 054	65 080	70 597	76 540	77 683	78 887	
Total	594 017	574 865	606 810	644 068	673 289	690 364	

1/ Latest month is preliminary.

Table 2 – Year-on-year percentage change in retail trade sales at constant 2012 prices

Month	2009	2010	2011	2012	2013	2014	2014 year-to-date
Jan	1,8	0,7	6,8	4,4	2,2	5,9	5,9
Feb	-3,8	1,1	6,0	6,7	3,6	2,0	3,9
Mar	-4,3	3,4	4,9	6,9	2,7	0,5	2,7
Apr	-6,2	4,1	10,0	1,6	1,9	2,2	2,6
May	-3,4	4,6	1,6	6,3	6,2	2,8	2,6
Jun	-5,2	8,1	2,4	8,8	1,5	-0,9	2,0
Jul	-2,1	8,5	2,9	3,2	2,9	2,4	2,1
Aug	-3,9	5,0	7,3	6,9	3,1	2,0	2,1
Sep	-2,5	6,1	7,6	4,8	-0,1	2,3	2,1
Oct	-3,8	6,5	7,8	1,6	1,5		
Nov	-4,1	8,5	7,1	3,8	3,9		
Dec	-1,5	8,5	8,4	1,5	1,5		
Total	-3,2	5,6	6,1	4,5	2,5		

Table 3 – Seasonally adjusted retail trade sales at constant 2012 prices

Month	R million				Month-on-month % change			
	2011	2012	2013	2014	2011	2012	2013	2014
Jan	52 285	55 272	55 896	58 686	1,0	-0,3	-1,5	0,4
Feb	52 092	53 447	57 467	58 590	-0,4	-3,3	2,8	-0,2
Mar	52 420	55 296	57 269	57 963	0,6	3,5	-0,3	-1,1
Apr	54 044	56 334	57 262	58 354	3,1	1,9	0,0	0,7
May	52 114	54 944	57 805	58 795	-3,6	-2,5	0,9	0,8
Jun	52 391	56 301	57 937	58 244	0,5	2,5	0,2	-0,9
Jul	53 289	56 249	57 401	58 935	1,7	-0,1	-0,9	1,2
Aug	53 705	56 842	57 928	59 243	0,8	1,1	0,9	0,5
Sep	54 528	57 003	57 698	58 792	1,5	0,3	-0,4	-0,8
Oct	55 317	56 583	57 539		1,4	-0,7	-0,3	
Nov	54 953	56 803	58 098		-0,7	0,4	1,0	
Dec	55 446	56 732	58 467		0,9	-0,1	0,6	

Table 4 – Retail trade sales at constant 2012 prices by type of retailer (R million)

Type of retailer	Apr-14	May-14	Jun-14	Jul-14	Aug-14	Sep-14 1/
General dealers	21 890	23 788	23 495	22 325	23 891	24 438
Food, beverages and tobacco in specialised stores	4 881	4 698	4 621	4 897	4 943	4 974
Pharmaceuticals and medical goods, cosmetics and toiletries	4 076	4 060	3 938	4 254	4 004	3 958
Textiles, clothing, footwear and leather goods	12 409	12 437	10 967	11 740	11 558	10 416
Household furniture, appliances and equipment	2 536	2 816	2 604	2 870	2 888	2 860
Hardware, paint and glass	3 727	4 179	4 275	4 344	4 596	4 486
All other retailers	5 723	5 738	5 356	5 812	5 808	5 500
Total	55 242	57 716	55 256	56 242	57 688	56 632

1/ Preliminary.

Table 5 – Year-on-year percentage change in retail trade sales at constant 2012 prices by type of retailer

Type of retailer	Apr-14	May-14	Jun-14	Jul-14	Aug-14	Sep-14
General dealers	2,2	3,3	-1,0	2,4	3,4	1,9
Food, beverages and tobacco in specialised stores	6,3	-1,3	-3,7	-0,6	-1,6	3,0
Pharmaceuticals and medical goods, cosmetics and toiletries	-1,1	1,9	0,9	0,8	1,2	4,6
Textiles, clothing, footwear and leather goods	3,7	3,8	-1,9	4,5	0,3	-0,6
Household furniture, appliances and equipment	1,4	1,4	-6,6	0,7	1,1	3,6
Hardware, paint and glass	-1,0	-0,1	5,3	1,1	3,6	6,1
All other retailers	1,0	5,3	1,0	3,8	2,8	3,6
Total	2,2	2,8	-0,9	2,4	2,0	2,3

Table 6 – Contribution of each type of retailer to the year-on-year percentage change in retail trade sales at constant 2012 prices (percentage points)

Type of retailer	Apr-14	May-14	Jun-14	Jul-14	Aug-14	Sep-14
General dealers	0,9	1,4	-0,4	1,0	1,4	0,8
Food, beverages and tobacco in specialised stores	0,5	-0,1	-0,3	-0,1	-0,1	0,3
Pharmaceuticals and medical goods, cosmetics and toiletries	-0,1	0,1	0,1	0,1	0,1	0,3
Textiles, clothing, footwear and leather goods	0,8	0,8	-0,4	0,9	0,1	-0,1
Household furniture, appliances and equipment	0,1	0,1	-0,3	0,0	0,1	0,2
Hardware, paint and glass	-0,1	0,0	0,4	0,1	0,3	0,5
All other retailers	0,1	0,5	0,1	0,4	0,3	0,3
Total	2,2	2,8	-0,9	2,4	2,0	2,3

Table 7 – Retail trade sales at current prices (R million)

Month	2008	2009	2010	2011	2012	2013	2014 1/
Jan	36 568	41 091	43 082	46 404	50 384	53 762	59 094
Feb	37 700	40 366	42 066	45 085	50 072	54 173	57 584
Mar	39 858	42 665	45 142	48 184	53 573	57 278	60 306
Apr	40 283	41 935	44 363	49 619	52 574	55 906	59 988
May	40 535	43 312	45 817	47 734	52 572	58 091	63 026
Jun	40 636	42 119	45 985	48 406	54 656	57 745	60 500
Jul	40 314	42 919	46 929	49 764	53 193	56 895	61 719
Aug	40 982	42 301	44 667	49 471	54 705	58 839	63 670
Sep	41 380	43 032	45 900	51 148	55 665	57 958	62 578
Oct	43 540	44 425	47 614	53 365	56 456	59 420	
Nov	45 339	45 686	49 943	55 511	60 135	64 712	
Dec	58 845	60 711	66 250	74 725	79 296	83 190	
Total	505 980	530 562	567 758	619 416	673 289	717 969	

1/ Latest month is preliminary.

Table 8 – Year-on-year percentage change in retail trade sales at current prices

Month	2009	2010	2011	2012	2013	2014	2014 year-to-date
Jan	12,4	4,8	7,7	8,6	6,7	9,9	9,9
Feb	7,1	4,2	7,2	11,1	8,2	6,3	8,1
Mar	7,0	5,8	6,7	11,2	6,9	5,3	7,1
Apr	4,1	5,8	11,8	6,0	6,3	7,3	7,2
May	6,9	5,8	4,2	10,1	10,5	8,5	7,4
Jun	3,6	9,2	5,3	12,9	5,7	4,8	7,0
Jul	6,5	9,3	6,0	6,9	7,0	8,5	7,2
Aug	3,2	5,6	10,8	10,6	7,6	8,2	7,3
Sep	4,0	6,7	11,4	8,8	4,1	8,0	7,4
Oct	2,0	7,2	12,1	5,8	5,3		
Nov	0,8	9,3	11,1	8,3	7,6		
Dec	3,2	9,1	12,8	6,1	4,9		
Total	4,9	7,0	9,1	8,7	6,6		

Table 9 – Seasonally adjusted retail trade sales at current prices

Month	R million				Month-on-month % change			
	2011	2012	2013	2014	2011	2012	2013	2014
Jan	49 333	54 184	57 237	62 419	1,4	-0,1	-1,4	1,1
Feb	49 321	52 725	59 153	62 843	0,0	-2,7	3,3	0,7
Mar	49 718	54 559	58 767	62 391	0,8	3,5	-0,7	-0,7
Apr	51 285	55 733	59 094	63 178	3,2	2,2	0,6	1,3
May	49 719	54 360	59 583	64 015	-3,1	-2,5	0,8	1,3
Jun	50 369	56 070	60 027	63 817	1,3	3,1	0,7	-0,3
Jul	51 352	56 149	59 629	64 834	2,0	0,1	-0,7	1,6
Aug	51 939	56 878	60 438	65 522	1,1	1,3	1,4	1,1
Sep	52 839	57 352	60 522	65 097	1,7	0,8	0,1	-0,6
Oct	53 832	57 315	60 409		1,9	-0,1	-0,2	
Nov	53 534	57 781	61 227		-0,6	0,8	1,4	
Dec	54 246	58 055	61 746		1,3	0,5	0,8	

Table 10 – Retail trade sales at current prices by type of retailer (R million)

Type of retailer	Apr-14	May-14	Jun-14	Jul-14	Aug-14	Sep-14 1/
General dealers	24 057	26 309	26 032	24 848	26 782	27 371
Food, beverages and tobacco in specialised stores	5 472	5 313	5 213	5 524	5 610	5 645
Pharmaceuticals and medical goods, cosmetics and toiletries	4 365	4 364	4 269	4 641	4 368	4 338
Textiles, clothing, footwear and leather goods	13 327	13 420	11 855	12 714	12 610	11 406
Household furniture, appliances and equipment	2 579	2 864	2 653	2 925	2 937	2 897
Hardware, paint and glass	4 070	4 605	4 720	4 809	5 102	4 997
All other retailers	6 118	6 151	5 758	6 259	6 261	5 924
Total	59 988	63 026	60 500	61 719	63 670	62 578

1/ Preliminary.

Table 11 – Year-on-year percentage change in retail trade sales at current prices by type of retailer

Type of retailer	Apr-14	May-14	Jun-14	Jul-14	Aug-14	Sep-14
General dealers	8,1	10,1	5,5	9,5	10,8	8,4
Food, beverages and tobacco in specialised stores	12,8	5,8	3,2	6,5	6,3	10,6
Pharmaceuticals and medical goods, cosmetics and toiletries	2,6	5,9	5,7	6,1	6,6	10,1
Textiles, clothing, footwear and leather goods	8,7	9,4	3,4	10,2	5,9	4,7
Household furniture, appliances and equipment	2,5	2,7	-4,6	3,0	2,9	4,4
Hardware, paint and glass	3,5	5,7	11,3	7,4	9,5	12,1
All other retailers	4,7	9,2	4,9	8,1	6,7	7,0
Total	7,3	8,5	4,8	8,5	8,2	8,0

Table 12 – Contribution of each type of retailer to the year-on-year percentage change in retail trade sales at current prices (percentage points)

Type of retailer	Apr-14	May-14	Jun-14	Jul-14	Aug-14	Sep-14
General dealers	3,2	4,2	2,3	3,8	4,4	3,7
Food, beverages and tobacco in specialised stores	1,1	0,5	0,3	0,6	0,6	0,9
Pharmaceuticals and medical goods, cosmetics and toiletries	0,2	0,4	0,4	0,5	0,5	0,7
Textiles, clothing, footwear and leather goods	1,9	2,0	0,7	2,1	1,2	0,9
Household furniture, appliances and equipment	0,1	0,1	-0,2	0,2	0,1	0,2
Hardware, paint and glass	0,2	0,4	0,8	0,6	0,8	0,9
All other retailers	0,5	0,9	0,5	0,8	0,7	0,7
Total	7,3	8,5	4,8	8,5	8,2	8,0

Survey information

Introduction	<p>1 Statistics South Africa (Stats SA) conducts a monthly survey of the retail trade industry, covering retail enterprises (see 4 below). This survey is based on a sample drawn from Stats SA's 2014 business sampling frame (BSF) that contains businesses registered for value added tax (VAT).</p> <p>2 In order to improve timeliness, some information for the latest month had to be estimated due to late response. These estimates will be revised in future statistical releases as soon as information becomes available. Published retail trade sales estimates include value added tax (VAT).</p>
Purpose of the survey	<p>3 The results of the monthly retail trade sales survey are used to compile estimates of the gross domestic product (GDP) and its components, which are used in monitoring the state of the economy and formulation of economic policy. These statistics are also used in the analysis of comparative business and industry performance.</p>
Scope of the survey	<p>4 This survey covers retail enterprises according to the following types of retailers:</p> <ul style="list-style-type: none"> • General dealers: <ul style="list-style-type: none"> ➢ Retail trade in non-specialised stores with food, beverages and tobacco predominating; and ➢ 'Other' retail trade in non-specialised stores. • Retailers in food, beverages and tobacco in specialised stores: <ul style="list-style-type: none"> ➢ Retailers in fresh fruit and vegetables; ➢ Retailers in meat and meat products; ➢ Retailers in bakery products; ➢ Retailers in beverages; ➢ Retailers in tobacco; and ➢ Retailers in 'other' food in specialised stores. • Retailers in pharmaceutical and medical goods, cosmetics and toiletries; • Retailers in textiles, clothing, footwear and leather goods: <ul style="list-style-type: none"> ➢ Retailers in men's and boys' clothing; ➢ Retailers in ladies', girls' and infants' clothing; ➢ General outfitters; and ➢ Retailers in footwear. • Retailers in household furniture, appliances and equipment; • Retailers in hardware, paint and glass; and • All 'other' retailers: <ul style="list-style-type: none"> ➢ Retailers in reading matter and stationery; ➢ Retailers in jewellery, watches and clocks; ➢ Retailers in sport goods and entertainment requisites; ➢ Retailers in 'other' specialised stores; ➢ Repair of personal and household goods; ➢ Retail trade in second-hand goods in stores; and ➢ Retail trade not in stores.
Classification	<p>5 The 1993 edition of the <i>Standard Industrial Classification of all Economic Activities</i> (SIC), Fifth Edition, Report No. 09-90-02, was used to classify the statistical units in the survey. The SIC is based on the 1990 <i>International Standard Industrial Classification of all Economic Activities</i> (ISIC) with suitable adaptations for local conditions. Each enterprise is classified to the industry which reflects its predominant activity. Statistics in this publication are presented at SIC group (four digit) level.</p>
Collection rate	<p>6 The preliminary collection rate for the survey on retail trade sales for September 2014 was 81,9%. The improved collection rate for August 2014 was 87,7%.</p>

Statistical unit	7	The statistical unit for which information is compiled and published is the enterprise, defined as a legal unit or a combination of legal units that includes and directly controls all functions necessary to carry out its sales activities. The statistical units are derived from and linked to the South African Revenue Service (SARS) administrative data.
Revised figures	8	Revised figures are mainly due to late submission of data to Stats SA, or respondents reporting revisions or corrections to their figures. Preliminary figures, as indicated in the relevant tables, are subject to change and when revised will not be indicated as such.
Related publications	9	Users may also refer to the following publications available from Stats SA: <ul style="list-style-type: none">• <i>Bulletin of Statistics</i>, issued quarterly;• <i>Stats in Brief</i> issued annually; and• <i>South African Statistics</i>, issued annually.
Rounding-off of figures	10	Where figures have been rounded off, discrepancies may occur between sums of the component items and the totals.
Historical data	11	Historical retail trade sales data are available on the Stats SA website. To access the data electronically, use the following link: http://beta2.statssa.gov.za/?page_id=1849
Past publications	12	Past retail trade sales releases are available on the Stats SA website. To access the releases electronically, use the following link: http://beta2.statssa.gov.za/?page_id=1866&PPN=P6242.1&SCH=5713

Technical notes

Survey methodology and design

- 1 The survey is conducted on a monthly basis. Questionnaires are sent to a sample of 2 514 enterprises from a population of 25 414 enterprises. Completed questionnaires are required to be returned to Stats SA within 10 days after the end of the reference month. Fax, email and telephone reminders are used to follow up on non-respondents.
- 2 A stratified random sample was drawn at the SIC four-digit level in April 2014 from Stats SA’s business sampling frame (BSF). Strata were formed using a combination of the Standard Industrial Classification and the measure of size classes for enterprises (see point 3 below).

The Neyman optimal allocation formula given below was used to allocate samples to each stratum:

$$n_h = n * (N_h * S_h) / [\sum (N_i * S_i)].$$

Neyman allocation formula not only allocates sample sizes to each stratum, but also calculates the relative precision for each stratum as well as the relative precision for all strata. The relative precision for these strata did not exceed 4,2%.

Class limits

- 3 The retail sampling frame is divided into four size groups. All large and medium enterprises (size group one and two) are completely enumerated. Simple random sampling is applied to size group three and four (small and very small) enterprises. The total value of sales of the large and medium enterprises (size group one and two) is added to the weighted totals of size group three and four to reflect the total value of sales.

Measure of size classes (Rand)

Enterprise size	Size group	Lower limits	Upper limits
Very small	4	808 528	8 000 000
Small	3	8 000 001	38 000 000
Medium	2	38 000 001	78 000 000
Large	1	78 000 001	

Sample weighting

- 4 For those strata not completely enumerated, the weights to produce estimates are the inverse ratio of the sampling fraction, modified to take account of non-response in the survey. Stratum estimates are calculated and then aggregated with the completely enumerated stratum to form group estimates. These procedures are consistent with international best practice.

Seasonal adjustment

- 5 Seasonally adjusted estimates are generated each month using the X-12 Seasonal Adjustment Program developed by the US Bureau of the Census, 1968. Seasonal adjustment is a means of removing the estimated effects of normal seasonal variation from the series so that the effects of other influences on the series can be recognised more clearly. Seasonal adjustment does not aim to remove irregular or non-seasonal influences which may be present in any particular month. Influences that are volatile or unsystematic can still make it difficult to interpret the movement of the series, even after adjustment for seasonal variations. Therefore, the month-to-month movements of seasonally adjusted estimates may not be reliable indicators of trend behaviour. The X-12-ARIMA procedure for retail trade sales is described in more detail on the Stats SA website:

[Click to Download Seasonal adjustment Retail Trade Sales March 2014](#)

Trend cycle	6	The trend is the long-term pattern or movement of a time series. The X-12 Seasonal Adjustment Program is used for smoothing seasonally adjusted estimates to estimate the underlying trend cycle.
Constant prices	7	For January 2002 to December 2007 retail trade sales at constant prices were calculated using the consumer price index (CPI) for goods, excluding petrol and purchases of vehicles, for all urban areas to deflate total sales at current prices. From January 2008 onwards total retail trade sales at constant prices are obtained by adding up the deflated sales by type of retailer.
	8	Retail trade sales at constant prices by type of retailer are obtained by deflating estimated sales at current prices by the relevant weighted price index. To obtain total retail trade sales at constant prices, estimates of the deflated sales for each type of retailer are aggregated.
Reliability of estimates	9	Data presented in this publication are based on information obtained from a sample and are, therefore, subject to sampling variability; that is, they may differ from the figures that would have been produced if the data had been obtained from all enterprises in the retail industry in South Africa. Estimates are subject to sampling and non-sampling errors.
	10	Inaccuracies may occur because of imperfections in reporting by enterprises and errors made in the collection and processing of the data. Inaccuracies of this kind are referred to as non-sampling errors. Every effort is made to minimise non-sampling errors by careful design of questionnaires, testing them in pilot studies, editing reported data and implementing efficient operating procedures. Fluctuations may occur in consecutive months as a result of seasonal and economic factors.
Month-on-month percentage change	11	The month-on-month percentage change in a variable for any given month is the change between that month and the previous month, expressed as a percentage of the latter.
Year-on-year percentage change	12	The year-on-year percentage change in a variable for any given period is the change between that period and the corresponding period of the previous year, expressed as a percentage of the latter.
Contribution (percentage points)	13	The contribution (percentage points) to the year-on-year percentage change for any given period is calculated by multiplying the percentage change of each type of retailer by its corresponding weight, divided by 100. The weight is the percentage contribution of each type of retailer to total retail trade sales in the corresponding period of the previous year.

Glossary

Enterprise An enterprise is a legal entity or a combination of legal units that includes and directly controls all functions necessary to carry out its sales activities.

Industry An industry is made up of enterprises engaged in the same or similar kinds of economic activity. Industries are defined in the *System of National Accounts (SNA)* in the same way as in the *Standard Industrial Classification of all Economic Activities (SIC)*, Fifth Edition, Report No. 09-90-02 of January 1993.

Retail trade Retail trade includes the resale (sale without transformation) of new and used goods and products to the general public for household use.

Retailer A retailer is an enterprise deriving more than 50% of its turnover from sales of goods to the general public for household use.

Symbols and abbreviations	BSF	Business sampling frame
	CPI	Consumer price index
	GDP	Gross domestic product
	ISIC	International Standard Industrial Classification
	SARS	South African Revenue Service
	SIC	Standard Industrial Classification of all Economic Activities
	SNA	System of National Accounts
	Stats SA	Statistics South Africa
VAT	Value added tax	

Technical enquiries

Raquel Floris Telephone number: (012) 337 6488
Email: raquelf@statssa.gov.za

Keshnee Govender Telephone number: (012) 310 8423
Email: keshneeg@statssa.gov.za

General information

Stats SA publishes approximately 300 different statistical releases each year. It is not economically viable to produce them in more than one of South Africa's eleven official languages. Since the releases are used extensively, not only locally but also by international economic and social-scientific communities, Stats SA releases are published in English only.

Stats SA has copyright on this publication. Users may apply the information as they wish, provided that they acknowledge Stats SA as the source of the basic data wherever they process, apply, utilise, publish or distribute the data; and also that they specify that the relevant application and analysis (where applicable) result from their own processing of the data.

Stats SA products

A complete set of Stats SA publications is available at the Stats SA Library and the following libraries:

National Library of South Africa, Pretoria Division
National Library of South Africa, Cape Town Division
Natal Society Library, Pietermaritzburg
Library of Parliament, Cape Town
Bloemfontein Public Library
Johannesburg Public Library
Eastern Cape Library Services, King William's Town
Central Regional Library, Polokwane
Central Reference Library, Mbombela
Central Reference Collection, Kimberley
Central Reference Library, Mmabatho

Stats SA also provides a subscription service.

Electronic services

A large range of data is available via online services. For more detail about our electronic services, contact Stats SA's user information service at (012) 310 8600.

You can also visit us on the internet at: www.statssa.gov.za

General enquiries

User information services	Telephone number: (012) 310 8600 Email address: info@statssa.gov.za
Orders/subscription services	Telephone number: (012) 310 8044 Email address: magdaj@statssa.gov.za
Postal address	Private Bag X44, Pretoria, 0001

Produced by Stats SA