



The South Africa I know, the home I understand

Statistical release

P6242.1

Retail trade sales (Preliminary)

March 2016

Embargoed until:
18 May 2016
13:00

Enquiries:

Keshnee Govender
(012) 310 8423

Forthcoming issue:

April 2016

Expected release date:

15 June 2016

Contents

Sales at constant 2012 prices: results for March 20162

Table A – Key growth rates in retail trade sales at constant 2012 prices.....2

Table B – Retail trade sales at constant 2012 prices for the latest three months by type of retailer2

Figure 1 – Retail trade sales at constant 2012 prices3

Figure 2 – Retail trade sales at constant 2012 prices: year-on-year percentage change.....3

Sales at current prices: results for March 20164

Table C – Key growth rates in retail trade sales at current prices.....4

Table D – Retail trade sales at current prices for the latest three months by type of retailer4

Tables.....5

Table 1 – Retail trade sales at constant 2012 prices (R million)5

Table 2 – Year-on-year percentage change in retail trade sales at constant 2012 prices5

Table 3 – Seasonally adjusted retail trade sales at constant 2012 prices5

Table 4 – Retail trade sales at constant 2012 prices by type of retailer (R million)6

Table 5 – Year-on-year percentage change in retail trade sales at constant 2012 prices by type of retailer6

Table 6 – Contribution of each type of retailer to the year-on-year percentage change in retail trade sales at constant 2012 prices (percentage points)6

Table 7 – Retail trade sales at current prices (R million).....7

Table 8 – Year-on-year percentage change in retail trade sales at current prices7

Table 9 – Seasonally adjusted retail trade sales at current prices7

Table 10 – Retail trade sales at current prices by type of retailer (R million)8

Table 11 – Year-on-year percentage change in retail trade sales at current prices by type of retailer.....8

Table 12 – Contribution of each type of retailer to the year-on-year percentage change in retail trade sales at current prices (percentage points)8

Survey information.....9

Technical notes11

Glossary.....13

Technical enquiries13

General information14

Sales at constant 2012 prices: results for March 2016

Table A – Key growth rates in retail trade sales at constant 2012 prices

	Oct-15	Nov-15	Dec-15	Jan-16	Feb-16	Mar-16
Year-on-year % change, unadjusted	3,4	3,8	4,1	3,6	4,0	2,8
Month-on-month % change, seasonally adjusted	0,0	1,6	0,1	-0,8	0,4	0,2
3-month % change, seasonally adjusted 1/	1,0	0,8	1,1	1,3	0,8	0,2

1/ Percentage change between the previous 3 months and the 3 months ending in the month indicated.

Measured in real terms (constant 2012 prices), retail trade sales increased by 2,8% year-on-year in March 2016. Positive annual growth rates were recorded for:

- general dealers (6,0%);
- retailers in textiles, clothing, footwear and leather goods (4,9%);
- retailers in food, beverages and tobacco in specialised stores (0,3%); and
- retailers in pharmaceuticals and medical goods, cosmetics and toiletries (0,3%) – see Table 5.

The main contributor to the 2,8% increase was general dealers (contributing 2,5 percentage points) – see Table 6.

Seasonally adjusted retail trade sales increased by 0,2% month-on-month in March 2016. This followed month-on-month changes of 0,4% in February 2016 and -0,8% in January 2016. In the first quarter of 2016, seasonally adjusted retail trade sales increased by 0,2% compared with the previous quarter.

Table B – Retail trade sales at constant 2012 prices for the latest three months by type of retailer

Type of retailer	Jan – Mar 2015 (R million)	Weight	Jan – Mar 2016 (R million)	% change between Jan – Mar 2015 and Jan – Mar 2016	Contribution (% points) to the total % change
General dealers	71 299	40,2	74 525	4,5	1,8
Food, beverages and tobacco in specialised stores	14 049	7,9	14 196	1,0	0,1
Pharmaceuticals and medical goods, cosmetics and toiletries	12 189	6,9	12 793	5,0	0,3
Textiles, clothing, footwear and leather goods	33 624	19,0	34 983	4,0	0,8
Household furniture, appliances and equipment	8 807	5,0	8 875	0,8	0,0
Hardware, paint and glass	13 601	7,7	13 458	-1,1	-0,1
All other retailers	23 644	13,3	24 467	3,5	0,5
Total	177 213	100,0	183 297	3,4	3,4

Retail trade sales increased by 3,4% in the first quarter of 2016 compared with the first quarter of 2015. The main contributors to this increase were:

- general dealers (4,5% and contributing 1,8 percentage points); and
- retailers in textiles, clothing, footwear and leather goods (4,0% and contributing 0,8 of a percentage point) – see Table B.

Figure 1 – Retail trade sales at constant 2012 prices

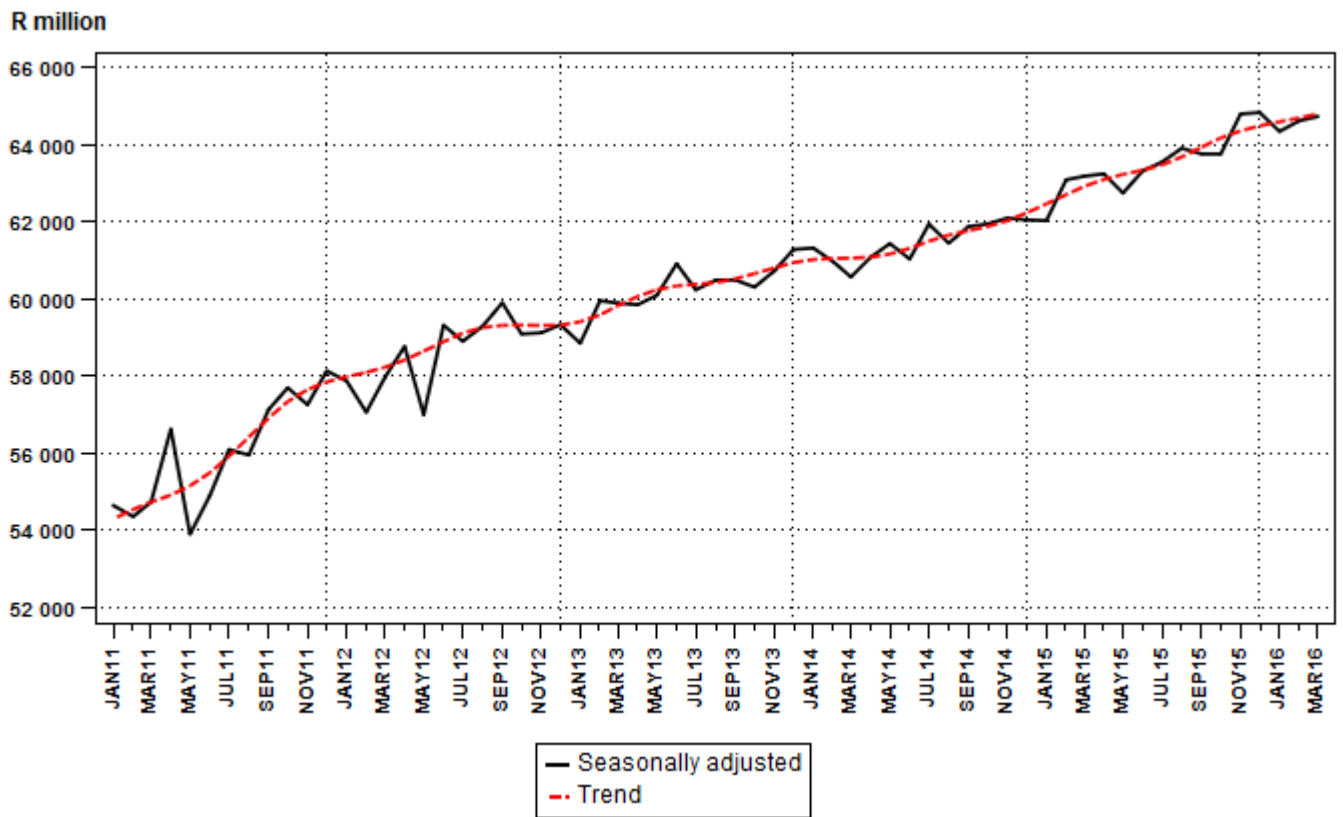
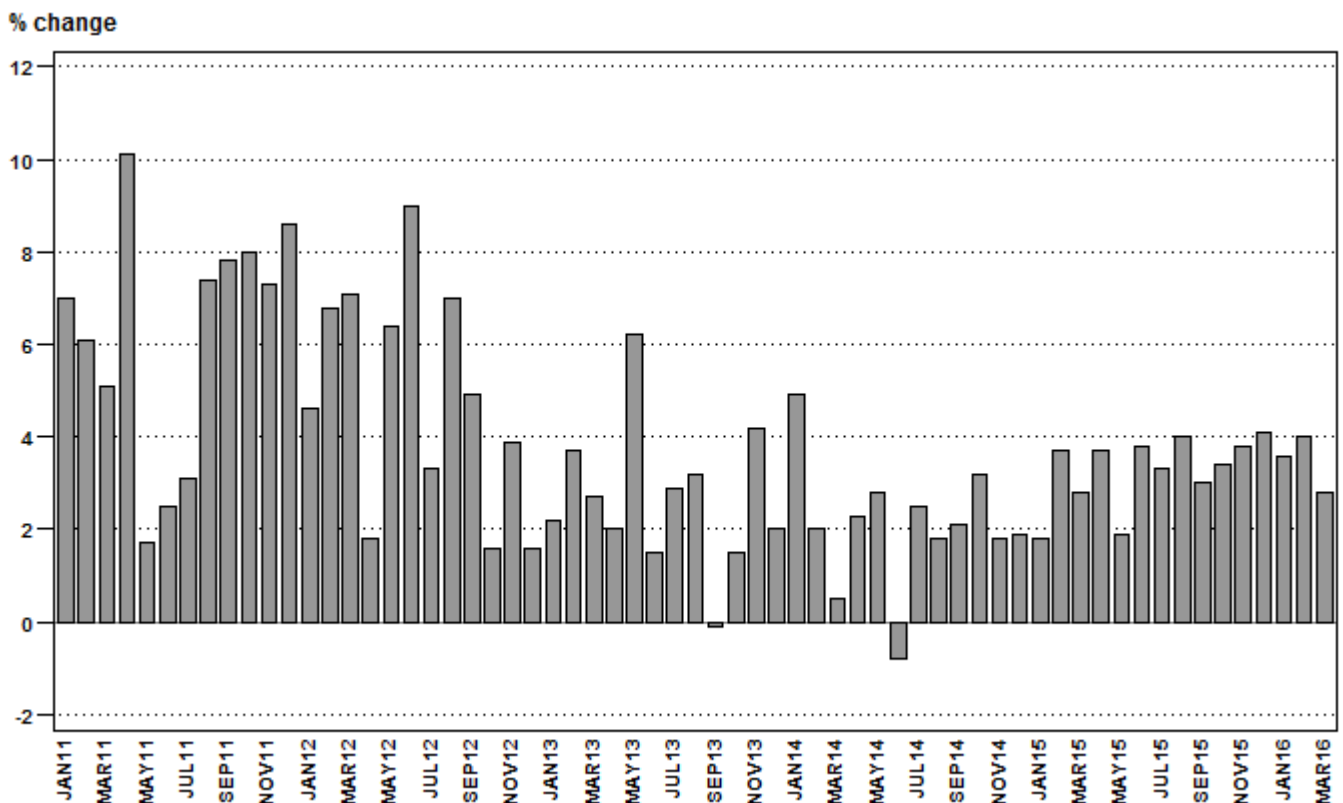


Figure 2 – Retail trade sales at constant 2012 prices: year-on-year percentage change



Sales at current prices: results for March 2016

Table C – Key growth rates in retail trade sales at current prices

	Oct-15	Nov-15	Dec-15	Jan-16	Feb-16	Mar-16
Year-on-year % change, unadjusted	7,4	7,7	8,2	8,1	9,1	8,1
Month-on-month % change, seasonally adjusted	0,5	1,7	0,5	0,0	0,9	0,7
3-month % change, seasonally adjusted 1/	2,0	1,7	2,0	2,3	2,1	1,7

1/ Percentage change between the previous 3 months and the 3 months ending in the month indicated.

Table D – Retail trade sales at current prices for the latest three months by type of retailer

Type of retailer	Jan – Mar 2015 (R million)	Weight	Jan – Mar 2016 (R million)	% change between Jan – Mar 2015 and Jan – Mar 2016	Contribution (% points) to the total % change
General dealers	81 339	40,9	89 857	10,5	4,3
Food, beverages and tobacco in specialised stores	16 495	8,3	17 920	8,6	0,7
Pharmaceuticals and medical goods, cosmetics and toiletries	13 579	6,8	15 001	10,5	0,7
Textiles, clothing, footwear and leather goods	37 519	18,9	40 861	8,9	1,7
Household furniture, appliances and equipment	8 881	4,5	9 073	2,2	0,1
Hardware, paint and glass	15 345	7,7	15 282	-0,4	0,0
All other retailers	25 537	12,9	27 408	7,3	0,9
Total	198 694	100,0	215 401	8,4	8,4

**PJ Lehohla
Statistician-General**

Tables

Table 1 – Retail trade sales at constant 2012 prices (R million)

Month	2010	2011	2012	2013	2014	2015	2016 1/
Jan	47 972	51 309	53 675	54 861	57 546	58 610	60 709
Feb	47 016	49 903	53 306	55 260	56 374	58 463	60 783
Mar	50 348	52 920	56 658	58 190	58 491	60 140	61 805
Apr	49 502	54 507	55 468	56 563	57 845	59 969	
May	51 116	52 002	55 356	58 791	60 451	61 584	
Jun	51 455	52 761	57 494	58 374	57 894	60 087	
Jul	52 479	54 091	55 859	57 494	58 954	60 910	
Aug	49 921	53 623	57 388	59 212	60 249	62 629	
Sep	51 304	55 298	58 006	57 974	59 217	61 017	
Oct	53 096	57 330	58 267	59 163	61 075	63 161	
Nov	55 466	59 491	61 819	64 443	65 597	68 074	
Dec	73 726	80 076	81 322	82 966	84 531	87 989	
Total	633 401	673 311	704 618	723 291	738 224	762 633	

1/ Figures for latest month are preliminary.

Table 2 – Year-on-year percentage change in retail trade sales at constant 2012 prices

Month	2011	2012	2013	2014	2015	2016	2016 year-to-date
Jan	7,0	4,6	2,2	4,9	1,8	3,6	3,6
Feb	6,1	6,8	3,7	2,0	3,7	4,0	3,8
Mar	5,1	7,1	2,7	0,5	2,8	2,8	3,4
Apr	10,1	1,8	2,0	2,3	3,7		
May	1,7	6,4	6,2	2,8	1,9		
Jun	2,5	9,0	1,5	-0,8	3,8		
Jul	3,1	3,3	2,9	2,5	3,3		
Aug	7,4	7,0	3,2	1,8	4,0		
Sep	7,8	4,9	-0,1	2,1	3,0		
Oct	8,0	1,6	1,5	3,2	3,4		
Nov	7,3	3,9	4,2	1,8	3,8		
Dec	8,6	1,6	2,0	1,9	4,1		
Total	6,3	4,6	2,7	2,1	3,3		

Table 3 – Seasonally adjusted retail trade sales at constant 2012 prices

Month	R million				Month-on-month % change			
	2013	2014	2015	2016	2013	2014	2015	2016
Jan	58 855	61 324	62 034	64 350	-0,8	0,1	0,0	-0,8
Feb	59 957	60 971	63 095	64 626	1,9	-0,6	1,7	0,4
Mar	59 895	60 574	63 187	64 737	-0,1	-0,7	0,1	0,2
Apr	59 852	61 086	63 250		-0,1	0,8	0,1	
May	60 098	61 440	62 751		0,4	0,6	-0,8	
Jun	60 915	61 039	63 327		1,4	-0,7	0,9	
Jul	60 241	61 944	63 554		-1,1	1,5	0,4	
Aug	60 489	61 450	63 914		0,4	-0,8	0,6	
Sep	60 496	61 881	63 766		0,0	0,7	-0,2	
Oct	60 309	61 948	63 763		-0,3	0,1	0,0	
Nov	60 731	62 101	64 802		0,7	0,2	1,6	
Dec	61 287	62 054	64 841		0,9	-0,1	0,1	

Table 4 – Retail trade sales at constant 2012 prices by type of retailer (R million)

Type of retailer	Oct-15	Nov-15	Dec-15	Jan-16	Feb-16	Mar-16 1/
General dealers	24 105	26 539	34 643	23 441	24 915	26 169
Food, beverages and tobacco in specialised stores	5 270	5 310	7 317	4 814	4 547	4 835
Pharmaceuticals and medical goods, cosmetics and toiletries	4 538	4 232	4 755	4 422	4 129	4 242
Textiles, clothing, footwear and leather goods	12 748	14 622	21 477	12 316	11 585	11 082
Household furniture, appliances and equipment	3 310	3 657	5 141	3 002	2 942	2 931
Hardware, paint and glass	4 948	5 595	4 963	4 171	4 820	4 467
All other retailers	8 242	8 119	9 693	8 543	7 845	8 079
Total	63 161	68 074	87 989	60 709	60 783	61 805

1/ Figures are preliminary.

Table 5 – Year-on-year percentage change in retail trade sales at constant 2012 prices by type of retailer

Type of retailer	Oct-15	Nov-15	Dec-15	Jan-16	Feb-16	Mar-16
General dealers	3,9	4,0	4,6	2,3	5,1	6,0
Food, beverages and tobacco in specialised stores	3,1	0,1	-3,6	0,5	2,5	0,3
Pharmaceuticals and medical goods, cosmetics and toiletries	8,0	6,2	3,0	7,1	7,8	0,3
Textiles, clothing, footwear and leather goods	4,5	5,5	6,7	3,3	4,1	4,9
Household furniture, appliances and equipment	-9,9	-4,4	6,0	2,8	1,6	-1,9
Hardware, paint and glass	0,1	2,2	4,2	1,0	1,2	-5,1
All other retailers	6,4	6,5	2,3	9,6	1,8	-0,8
Total	3,4	3,8	4,1	3,6	4,0	2,8

Table 6 – Contribution of each type of retailer to the year-on-year percentage change in retail trade sales at constant 2012 prices (percentage points)

Type of retailer	Oct-15	Nov-15	Dec-15	Jan-16	Feb-16	Mar-16
General dealers	1,5	1,6	1,8	0,9	2,1	2,5
Food, beverages and tobacco in specialised stores	0,3	0,0	-0,3	0,0	0,2	0,0
Pharmaceuticals and medical goods, cosmetics and toiletries	0,6	0,4	0,2	0,5	0,5	0,0
Textiles, clothing, footwear and leather goods	0,9	1,2	1,6	0,7	0,8	0,9
Household furniture, appliances and equipment	-0,6	-0,3	0,3	0,1	0,1	-0,1
Hardware, paint and glass	0,0	0,2	0,2	0,1	0,1	-0,4
All other retailers	0,8	0,8	0,3	1,3	0,2	-0,1
Total	3,4	3,8	4,1	3,6	4,0	2,8

Table 7 – Retail trade sales at current prices (R million)

Month	2010	2011	2012	2013	2014	2015	2016 1/
Jan	45 087	48 564	52 728	56 263	61 248	65 436	70 710
Feb	44 023	47 183	52 402	56 694	60 264	65 502	71 480
Mar	47 243	50 426	56 066	59 943	63 112	67 756	73 211
Apr	46 427	51 928	55 020	58 508	62 764	67 818	
May	47 949	49 955	55 018	60 794	65 957	70 082	
Jun	48 124	50 658	57 200	60 432	63 333	68 338	
Jul	49 112	52 080	55 668	59 543	64 631	69 268	
Aug	46 746	51 773	57 250	61 578	66 419	71 663	
Sep	48 036	53 528	58 255	60 654	65 355	69 840	
Oct	49 829	55 848	59 084	62 186	67 500	72 517	
Nov	52 267	58 094	62 934	67 938	72 824	78 414	
Dec	69 333	78 202	82 986	87 442	93 860	101 570	
Total	594 176	648 239	704 617	751 975	807 267	868 204	

1/ Figures for latest month are preliminary.

Table 8 – Year-on-year percentage change in retail trade sales at current prices

Month	2011	2012	2013	2014	2015	2016	2016 year-to-date
Jan	7,7	8,6	6,7	8,9	6,8	8,1	8,1
Feb	7,2	11,1	8,2	6,3	8,7	9,1	8,6
Mar	6,7	11,2	6,9	5,3	7,4	8,1	8,4
Apr	11,8	6,0	6,3	7,3	8,1		
May	4,2	10,1	10,5	8,5	6,3		
Jun	5,3	12,9	5,7	4,8	7,9		
Jul	6,0	6,9	7,0	8,5	7,2		
Aug	10,8	10,6	7,6	7,9	7,9		
Sep	11,4	8,8	4,1	7,8	6,9		
Oct	12,1	5,8	5,3	8,5	7,4		
Nov	11,1	8,3	8,0	7,2	7,7		
Dec	12,8	6,1	5,4	7,3	8,2		
Total	9,1	8,7	6,7	7,4	7,5		

Table 9 – Seasonally adjusted retail trade sales at current prices

Month	R million				Month-on-month % change			
	2013	2014	2015	2016	2013	2014	2015	2016
Jan	60 283	65 303	69 390	75 073	-0,8	0,9	0,4	0,0
Feb	61 585	65 231	70 727	75 729	2,2	-0,1	1,9	0,9
Mar	61 557	65 161	70 753	76 253	0,0	-0,1	0,0	0,7
Apr	61 660	66 023	71 291		0,2	1,3	0,8	
May	61 992	66 901	71 211		0,5	1,3	-0,1	
Jun	62 990	66 608	71 832		1,6	-0,4	0,9	
Jul	62 475	67 977	72 452		-0,8	2,1	0,9	
Aug	63 096	67 894	73 230		1,0	-0,1	1,1	
Sep	63 359	68 327	73 042		0,4	0,6	-0,3	
Oct	63 372	68 568	73 435		0,0	0,4	0,5	
Nov	64 150	69 052	74 683		1,2	0,7	1,7	
Dec	64 696	69 125	75 081		0,9	0,1	0,5	

Table 10 – Retail trade sales at current prices by type of retailer (R million)

Type of retailer	Oct-15	Nov-15	Dec-15	Jan-16	Feb-16	Mar-16 1/
General dealers	28 227	31 183	40 810	27 989	30 073	31 795
Food, beverages and tobacco in specialised stores	6 361	6 452	8 934	6 008	5 738	6 174
Pharmaceuticals and medical goods, cosmetics and toiletries	5 260	4 892	5 506	5 130	4 819	5 052
Textiles, clothing, footwear and leather goods	14 596	16 815	24 763	14 286	13 554	13 021
Household furniture, appliances and equipment	3 363	3 723	5 218	3 050	3 016	3 007
Hardware, paint and glass	5 626	6 362	5 628	4 730	5 495	5 057
All other retailers	9 083	8 988	10 711	9 517	8 786	9 105
Total	72 517	78 414	101 570	70 710	71 480	73 211

1/ Figures are preliminary.

Table 11 – Year-on-year percentage change in retail trade sales at current prices by type of retailer

Type of retailer	Oct-15	Nov-15	Dec-15	Jan-16	Feb-16	Mar-16
General dealers	8,3	8,2	9,4	7,6	11,3	12,3
Food, beverages and tobacco in specialised stores	8,6	5,0	1,5	7,4	10,7	8,0
Pharmaceuticals and medical goods, cosmetics and toiletries	13,3	11,1	8,6	11,9	13,0	6,7
Textiles, clothing, footwear and leather goods	8,8	10,1	11,1	7,7	9,1	10,1
Household furniture, appliances and equipment	-9,1	-3,5	6,9	3,9	3,1	-0,4
Hardware, paint and glass	2,5	4,4	6,0	1,9	2,3	-5,1
All other retailers	9,0	9,2	5,0	13,2	5,6	3,3
Total	7,4	7,7	8,2	8,1	9,1	8,1

Table 12 – Contribution of each type of retailer to the year-on-year percentage change in retail trade sales at current prices (percentage points)

Type of retailer	Oct-15	Nov-15	Dec-15	Jan-16	Feb-16	Mar-16
General dealers	3,2	3,2	3,7	3,0	4,7	5,1
Food, beverages and tobacco in specialised stores	0,7	0,4	0,1	0,6	0,8	0,7
Pharmaceuticals and medical goods, cosmetics and toiletries	0,9	0,7	0,5	0,8	0,8	0,5
Textiles, clothing, footwear and leather goods	1,8	2,1	2,6	1,6	1,7	1,8
Household furniture, appliances and equipment	-0,5	-0,2	0,4	0,2	0,1	0,0
Hardware, paint and glass	0,2	0,4	0,3	0,1	0,2	-0,4
All other retailers	1,1	1,0	0,5	1,7	0,7	0,4
Total	7,4	7,7	8,2	8,1	9,1	8,1

Survey information

Introduction	<p>1 Statistics South Africa (Stats SA) conducts a monthly survey of the retail trade industry, covering retail enterprises (see 4 below). This survey is based on a sample drawn from Stats SA's 2015 business sampling frame (BSF) that contains businesses registered for value added tax (VAT).</p> <p>2 In order to improve timeliness, some information for the latest month had to be estimated due to late response. These estimates will be revised in future statistical releases as soon as information becomes available. Published retail trade sales estimates include value added tax (VAT).</p>
Purpose of the survey	<p>3 The results of the monthly retail trade sales survey are used to compile estimates of the gross domestic product (GDP) and its components, which are used in monitoring the state of the economy and formulation of economic policy. These statistics are also used in the analysis of comparative business and industry performance.</p>
Scope of the survey	<p>4 This survey covers retail enterprises according to the following types of retailers:</p> <ul style="list-style-type: none"> • General dealers: <ul style="list-style-type: none"> ➢ Retail trade in non-specialised stores with food, beverages and tobacco predominating; and ➢ 'Other' retail trade in non-specialised stores. • Retailers in food, beverages and tobacco in specialised stores: <ul style="list-style-type: none"> ➢ Retailers in fresh fruit and vegetables; ➢ Retailers in meat and meat products; ➢ Retailers in bakery products; ➢ Retailers in beverages; ➢ Retailers in tobacco; and ➢ Retailers in 'other' food in specialised stores. • Retailers in pharmaceutical and medical goods, cosmetics and toiletries; • Retailers in textiles, clothing, footwear and leather goods: <ul style="list-style-type: none"> ➢ Retailers in men's and boys' clothing; ➢ Retailers in ladies', girls' and infants' clothing; ➢ General outfitters; and ➢ Retailers in footwear. • Retailers in household furniture, appliances and equipment; • Retailers in hardware, paint and glass; and • All 'other' retailers: <ul style="list-style-type: none"> ➢ Retailers in reading matter and stationery; ➢ Retailers in jewellery, watches and clocks; ➢ Retailers in sport goods and entertainment requisites; ➢ Retailers in 'other' specialised stores; ➢ Repair of personal and household goods; ➢ Retail trade in second-hand goods in stores; and ➢ Retail trade not in stores.
Classification	<p>5 The 1993 edition of the <i>Standard Industrial Classification of all Economic Activities</i> (SIC), Fifth Edition, Report No. 09-90-02, was used to classify the statistical units in the survey. The SIC is based on the 1990 <i>International Standard Industrial Classification of all Economic Activities</i> (ISIC) with suitable adaptations for local conditions. Each enterprise is classified to the industry which reflects its predominant activity. Statistics in this publication are presented at SIC group (four digit) level.</p>
Collection rate	<p>6 The preliminary collection rate for the survey on retail trade sales for March 2016 was 81,5%. The improved collection rate for February 2016 was 88,4%.</p>

Statistical unit	7	The statistical unit for which information is compiled and published is the enterprise, defined as a legal unit or a combination of legal units that includes and directly controls all functions necessary to carry out its sales activities. The statistical units are derived from and linked to the South African Revenue Service (SARS) administrative data.
Revised figures	8	Revised figures are mainly due to late submission of data to Stats SA, or respondents reporting revisions or corrections to their figures. Preliminary figures, as indicated in the relevant tables, are subject to change and when revised will not be indicated as such.
Related publications	9	Users may also refer to the following publication available from Stats SA: <ul style="list-style-type: none">• <i>Stats in Brief</i> issued annually.
Rounding-off of figures	10	Where figures have been rounded off, discrepancies may occur between sums of the component items and the totals.
Historical data	11	Historical retail trade sales data are available on the Stats SA website. To access the data electronically, use the following link: http://www.statssa.gov.za/?page_id=1849
Past publications	12	Past retail trade sales releases are available on the Stats SA website. To access the releases electronically, use the following link: http://www.statssa.gov.za/?page_id=1866&PPN=P6242.1&SCH=5713

Technical notes

Survey methodology and design

- 1 The survey is conducted on a monthly basis. Questionnaires are sent to a sample of 2 519 enterprises from a population of 23 580 enterprises. Completed questionnaires are required to be returned to Stats SA within 10 days after the end of the reference month. Fax, email and telephone reminders are used to follow up on non-respondents.
- 2 A stratified random sample was drawn at the SIC four-digit level in April 2015 from Stats SA’s business sampling frame (BSF). Strata were formed using a combination of the Standard Industrial Classification and the measure of size classes for enterprises (see point 3 below).

The Neyman optimal allocation formula given below was used to allocate samples to each stratum:

$$n_h = n * (N_h * S_h) / [\sum (N_i * S_i)].$$

Neyman allocation formula not only allocates sample sizes to each stratum, but also calculates the relative precision for each stratum as well as the relative precision for all strata. The relative precision for these strata did not exceed 5,0%.

Class limits

- 3 The retail sampling frame is divided into four size groups. All large and medium enterprises (size group one and two) are completely enumerated. Simple random sampling is applied to size group three and four (small and very small) enterprises. The total value of sales of the large and medium enterprises (size group one and two) is added to the weighted totals of size group three and four to reflect the total value of sales.

Measure of size classes (Rand)

Enterprise size	Size group	Lower limits	Upper limits
Very small	4	952 459	8 000 000
Small	3	8 000 001	38 000 000
Medium	2	38 000 001	78 000 000
Large	1	78 000 001	

Sample weighting

- 4 For those strata not completely enumerated, the weights to produce estimates are the inverse ratio of the sampling fraction, modified to take account of non-response in the survey. Stratum estimates are calculated and then aggregated with the completely enumerated stratum to form group estimates. These procedures are consistent with international best practice.

Seasonal adjustment

- 5 Seasonally adjusted estimates are generated each month using the X-12 Seasonal Adjustment Program developed by the US Bureau of the Census. Seasonal adjustment is a means of removing the estimated effects of normal seasonal variation from the series so that the effects of other influences on the series can be recognised more clearly. Seasonal adjustment does not aim to remove irregular or non-seasonal influences which may be present in any particular month. Influences that are volatile or unsystematic can still make it difficult to interpret the movement of the series, even after adjustment for seasonal variations. Therefore, the month-to-month movements of seasonally adjusted estimates may not be reliable indicators of trend behaviour. The X-12-ARIMA procedure for retail trade sales is described in more detail on the Stats SA website:

[Click to Download Seasonal adjustment Retail Trade Sales February 2016](#)

Trend cycle	6	The trend is the long-term pattern or movement of a time series. The X-12 Seasonal Adjustment Program is used for smoothing seasonally adjusted estimates to estimate the underlying trend cycle.
Constant prices	7	For January 2002 to December 2007 retail trade sales at constant prices were calculated using the consumer price index (CPI) for goods, excluding petrol and purchases of vehicles, for all urban areas to deflate total sales at current prices. From January 2008 onwards total retail trade sales at constant prices are obtained by adding up the deflated sales by type of retailer.
	8	Retail trade sales at constant prices by type of retailer are obtained by deflating estimated sales at current prices by the relevant weighted price index. To obtain total retail trade sales at constant prices, estimates of the deflated sales for each type of retailer are aggregated.
Reliability of estimates	9	Data presented in this publication are based on information obtained from a sample and are, therefore, subject to sampling variability; that is, they may differ from the figures that would have been produced if the data had been obtained from all enterprises in the retail industry in South Africa. Estimates are subject to sampling and non-sampling errors.
	10	Inaccuracies may occur because of imperfections in reporting by enterprises and errors made in the collection and processing of the data. Inaccuracies of this kind are referred to as non-sampling errors. Every effort is made to minimise non-sampling errors by careful design of questionnaires, testing them in pilot studies, editing reported data and implementing efficient operating procedures. Fluctuations may occur in consecutive months as a result of seasonal and economic factors.
Month-on-month percentage change	11	The month-on-month percentage change in a variable for any given month is the change between that month and the previous month, expressed as a percentage of the latter.
Year-on-year percentage change	12	The year-on-year percentage change in a variable for any given period is the change between that period and the corresponding period of the previous year, expressed as a percentage of the latter.
Contribution (percentage points)	13	The contribution (percentage points) to the year-on-year percentage change for any given period is calculated by multiplying the percentage change of each type of retailer by its corresponding weight, divided by 100. The weight is the percentage contribution of each type of retailer to total retail trade sales in the corresponding period of the previous year.

Glossary

Enterprise	An enterprise is a legal entity or a combination of legal units that includes and directly controls all functions necessary to carry out its sales activities.	
Industry	An industry is made up of enterprises engaged in the same or similar kinds of economic activity. Industries are defined in the <i>System of National Accounts (SNA)</i> in the same way as in the <i>Standard Industrial Classification of all Economic Activities (SIC)</i> , Fifth Edition, Report No. 09-90-02 of January 1993.	
Retail trade	Retail trade includes the resale (sale without transformation) of new and used goods and products to the general public for household use.	
Retailer	A retailer is an enterprise deriving more than 50% of its turnover from sales of goods to the general public for household use.	
Symbols and abbreviations	BSF	Business sampling frame
	CPI	Consumer price index
	GDP	Gross domestic product
	ISIC	International Standard Industrial Classification
	SARS	South African Revenue Service
	SIC	Standard Industrial Classification of all Economic Activities
	SNA	System of National Accounts
	Stats SA	Statistics South Africa
	VAT	Value added tax

Technical enquiries

Raquel Floris	Telephone number: (012) 337 6488 Email: raquelf@statssa.gov.za
Keshnee Govender	Telephone number: (012) 310 8423 Email: keshneeg@statssa.gov.za

General information

Stats SA publishes approximately 300 different statistical releases each year. It is not economically viable to produce them in more than one of South Africa's eleven official languages. Since the releases are used extensively, not only locally but also by international economic and social-scientific communities, Stats SA releases are published in English only.

Stats SA has copyright on this publication. Users may apply the information as they wish, provided that they acknowledge Stats SA as the source of the basic data wherever they process, apply, utilise, publish or distribute the data; and also that they specify that the relevant application and analysis (where applicable) result from their own processing of the data.

Stats SA products

A complete set of Stats SA publications is available at the Stats SA Library and the following libraries:

National Library of South Africa, Pretoria Division
National Library of South Africa, Cape Town Division
Natal Society Library, Pietermaritzburg
Library of Parliament, Cape Town
Bloemfontein Public Library
Johannesburg Public Library
Eastern Cape Library Services, King William's Town
Central Regional Library, Polokwane
Central Reference Library, Mbombela
Central Reference Collection, Kimberley
Central Reference Library, Mmabatho

Stats SA also provides a subscription service.

Electronic services

A large range of data is available via online services. For more detail about our electronic services, contact Stats SA's user information service at (012) 310 8600.

You can also visit us on the internet at: www.statssa.gov.za

General enquiries

User information services	Telephone number: (012) 310 8600 Email address: info@statssa.gov.za
Orders/subscription services	Telephone number: (012) 310 8044 Email address: magdaj@statssa.gov.za
Postal address	Private Bag X44, Pretoria, 0001

Produced by Stats SA