

STATISTICAL RELEASE
P6141.2

Wholesale trade sales
(Preliminary)

September 2017

Embargoed until:
16 November 2017
10:00

ENQUIRIES:
Keshnee Naidoo
(012) 310 8423

FORTHCOMING ISSUE:
October 2017

EXPECTED RELEASE DATE:
14 December 2017

www.statssa.gov.za
info@statssa.gov.za
T +27 12 310 8911
F +27 12 310 8500

Private Bag X44, Pretoria, 0001, South Africa
ISibalo House, Koch Street, Salvokop, Pretoria, 0002

Contents

| | |
|---|-----------|
| Sales at constant 2015 prices: results for September 2017 | 2 |
| Table A – Key growth rates in wholesale trade sales at constant 2015 prices | 2 |
| Figure 1 – Wholesale trade sales at constant 2015 prices..... | 2 |
| Sales at current prices: results for September 2017..... | 3 |
| Table B – Key growth rates in wholesale trade sales at current prices..... | 3 |
| Table C – Wholesale trade sales at current prices for the latest three months by type of dealer | 3 |
| Tables | 4 |
| Table 1 – Wholesale trade sales at constant 2015 prices (R million)..... | 4 |
| Table 2 – Year-on-year percentage change in wholesale trade sales at constant 2015 prices..... | 4 |
| Table 3 – Seasonally adjusted wholesale trade sales at constant 2015 prices | 4 |
| Table 4 – Wholesale trade sales at current prices (R million) | 5 |
| Table 5 – Year-on-year percentage change in wholesale trade sales at current prices | 5 |
| Table 6 – Seasonally adjusted wholesale trade sales at current prices..... | 5 |
| Table 7 – Wholesale trade sales at current prices by type of dealer (R million) | 6 |
| Table 8 – Year-on-year percentage change in wholesale trade sales at current prices by type of dealer | 6 |
| Table 9 – Contribution of type of dealer to the year-on-year percentage change in wholesale trade sales at current prices | 6 |
| Survey information..... | 7 |
| Technical notes | 9 |
| Glossary..... | 11 |
| Technical enquiries | 11 |
| General information | 12 |

Sales at constant 2015 prices: results for September 2017

Table A – Key growth rates in wholesale trade sales at constant 2015 prices

| | Apr-17 | May-17 | Jun-17 | Jul-17 | Aug-17 | Sep-17 |
|--|--------|--------|--------|--------|--------|--------|
| Year-on-year % change, unadjusted | -2,4 | -3,6 | -1,5 | -1,8 | -2,2 | -10,1 |
| Month-on-month % change, seasonally adjusted | 3,7 | -3,5 | 0,9 | 0,9 | -2,0 | -6,1 |
| 3-month % change, seasonally adjusted 1/ | -2,1 | 0,8 | 2,4 | 1,0 | -0,3 | -3,0 |

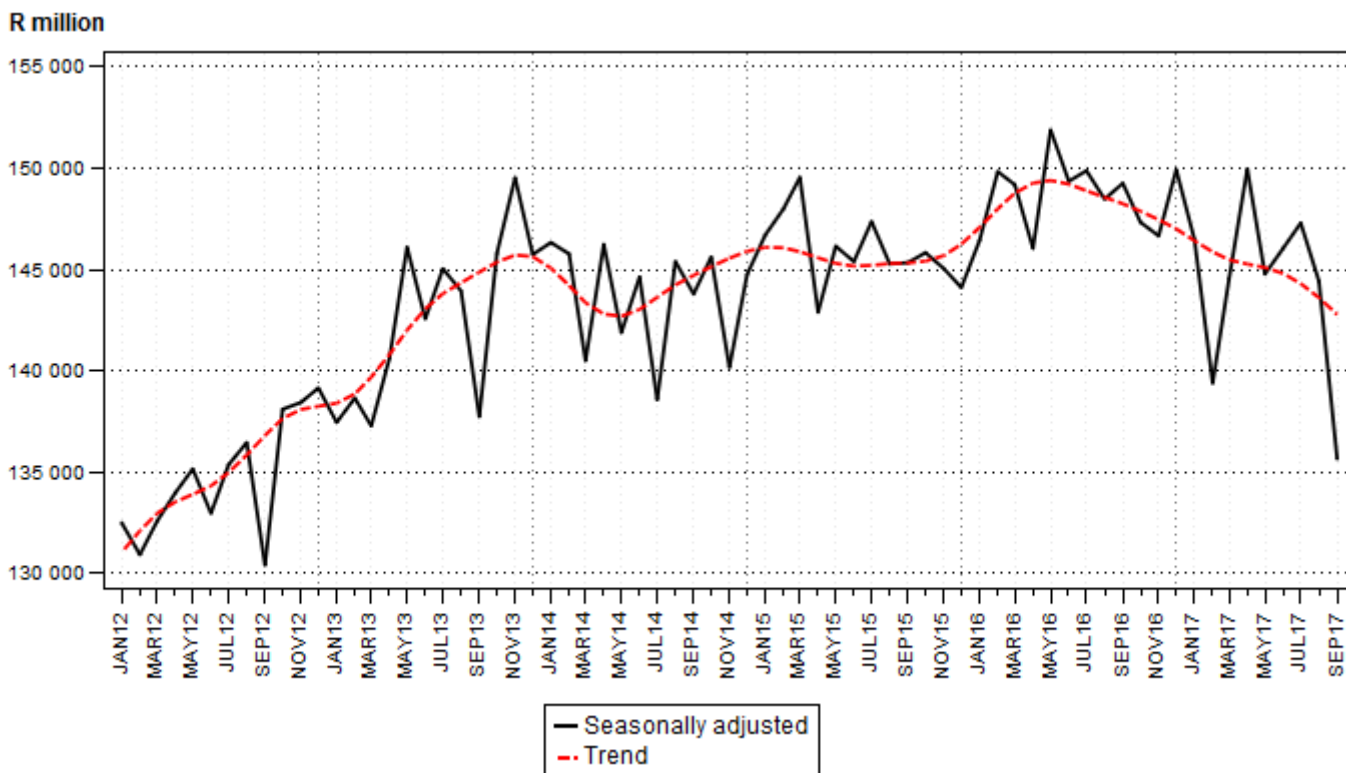
1/ Percentage change between the previous 3 months and the 3 months ending in the month indicated.

Measured in real terms (constant 2015 prices), wholesale trade sales decreased by 10,1% in September 2017 compared with September 2016.

Seasonally adjusted wholesale trade sales decreased by 6,1% in September 2017 compared with August 2017. This followed month-on-month changes of -2,0% in August 2017 and 0,9% in July 2017.

In the third quarter of 2017, seasonally adjusted wholesale trade sales decreased by 3,0% compared with the previous quarter.

Figure 1 – Wholesale trade sales at constant 2015 prices



Sales at current prices: results for September 2017

Table B – Key growth rates in wholesale trade sales at current prices

| | Apr-17 | May-17 | Jun-17 | Jul-17 | Aug-17 | Sep-17 |
|--|--------|--------|--------|--------|--------|--------|
| Year-on-year % change, unadjusted | 1,8 | 1,1 | 1,7 | 0,8 | 1,7 | -4,9 |
| Month-on-month % change, seasonally adjusted | 3,0 | -3,4 | 0,8 | 0,7 | -0,7 | -2,6 |
| 3-month % change, seasonally adjusted 1/ | -0,8 | 0,4 | 1,6 | 0,0 | -0,3 | -1,3 |

1/ Percentage change between the previous 3 months and the 3 months ending in the month indicated.

Measured in nominal terms (current prices), wholesale trade sales decreased by 4,9% in September 2017 compared with September 2016. The main contributor to this decrease was dealers in agricultural raw materials and livestock (-29,3% and contributing -2,8 percentage points) – see Tables 8 and 9.

Table C – Wholesale trade sales at current prices for the latest three months by type of dealer

| Type of dealer | Jul – Sep 2016 (R million) | Weight | Jul – Sep 2017 R million) | % change between Jul – Sep 2016 and Jul – Sep 2017 | Contribution (% points) to the total % change |
|--|----------------------------------|--------------|---------------------------------|--|--|
| Fee or contract basis | 17 883 | 3,7 | 19 976 | 11,7 | 0,4 |
| Agricultural raw materials and livestock | 47 922 | 9,9 | 39 540 | -17,5 | -1,7 |
| Food, beverages and tobacco | 78 366 | 16,1 | 77 203 | -1,5 | -0,2 |
| Textiles, clothing and footwear | 15 275 | 3,1 | 14 462 | -5,3 | -0,2 |
| Other household goods except precious stones | 61 416 | 12,6 | 64 738 | 5,4 | 0,7 |
| Precious stones, jewellery and silverware | 9 917 | 2,0 | 10 906 | 10,0 | 0,2 |
| Solid, liquid and gaseous fuels and related products | 89 236 | 18,4 | 93 396 | 4,7 | 0,9 |
| Metals and metal ores | 12 460 | 2,6 | 12 036 | -3,4 | -0,1 |
| Construction and building materials | 27 804 | 5,7 | 27 477 | -1,2 | -0,1 |
| Other intermediate products, waste and scrap | 23 110 | 4,8 | 25 118 | 8,7 | 0,4 |
| Machinery, equipment and supplies | 63 725 | 13,1 | 59 173 | -7,1 | -0,9 |
| Other goods | 38 750 | 8,0 | 37 794 | -2,5 | -0,2 |
| Total | 485 865 | 100,0 | 481 819 | -0,8 | -0,8 |

Wholesale trade sales decreased by 0,8% in the third quarter of 2017 compared with the third quarter of 2016. The main contributor to this decrease was dealers in agricultural raw materials and livestock (-17,5% and contributing -1,7 percentage points) – see Table C.

Risenga Maluleke
Statistician-General

Tables

Table 1 – Wholesale trade sales at constant 2015 prices (R million)

| Month | 2011 | 2012 | 2013 | 2014 | 2015 | 2016 | 2017 1/ |
|--------------|------------------|------------------|------------------|------------------|------------------|------------------|---------|
| Jan | 103 709 | 117 508 | 124 270 | 132 660 | 131 578 | 128 096 | 129 640 |
| Feb | 112 644 | 129 907 | 132 955 | 140 819 | 143 576 | 151 781 | 135 224 |
| Mar | 125 889 | 135 810 | 133 623 | 141 865 | 152 953 | 150 324 | 150 422 |
| Apr | 112 853 | 122 932 | 135 543 | 134 800 | 131 164 | 136 935 | 133 669 |
| May | 120 776 | 134 304 | 145 209 | 139 844 | 141 332 | 148 698 | 143 359 |
| Jun | 125 629 | 130 345 | 137 624 | 141 859 | 145 646 | 150 125 | 147 921 |
| Jul | 120 784 | 132 989 | 143 935 | 138 140 | 146 857 | 145 855 | 143 270 |
| Aug | 128 920 | 138 941 | 145 125 | 143 468 | 143 335 | 149 931 | 146 675 |
| Sep | 132 921 | 132 692 | 142 417 | 151 282 | 152 302 | 157 303 | 141 374 |
| Oct | 134 265 | 148 966 | 157 581 | 157 388 | 156 443 | 154 828 | |
| Nov | 142 997 | 156 364 | 165 231 | 153 348 | 159 531 | 162 344 | |
| Dec | 133 433 | 138 316 | 146 262 | 146 685 | 146 690 | 151 698 | |
| Total | 1 494 820 | 1 619 074 | 1 709 775 | 1 722 158 | 1 751 407 | 1 787 918 | |

1/ Figures for latest month are preliminary.

Table 2 – Year-on-year percentage change in wholesale trade sales at constant 2015 prices

| Month | 2012 | 2013 | 2014 | 2015 | 2016 | 2017 | 2017 year-to-date |
|--------------|------------|------------|------------|------------|------------|-------|-------------------|
| Jan | 13,3 | 5,8 | 6,8 | -0,8 | -2,6 | 1,2 | 1,2 |
| Feb | 15,3 | 2,3 | 5,9 | 2,0 | 5,7 | -10,9 | -5,4 |
| Mar | 7,9 | -1,6 | 6,2 | 7,8 | -1,7 | 0,1 | -3,5 |
| Apr | 8,9 | 10,3 | -0,5 | -2,7 | 4,4 | -2,4 | -3,2 |
| May | 11,2 | 8,1 | -3,7 | 1,1 | 5,2 | -3,6 | -3,3 |
| Jun | 3,8 | 5,6 | 3,1 | 2,7 | 3,1 | -1,5 | -3,0 |
| Jul | 10,1 | 8,2 | -4,0 | 6,3 | -0,7 | -1,8 | -2,8 |
| Aug | 7,8 | 4,5 | -1,1 | -0,1 | 4,6 | -2,2 | -2,7 |
| Sep | -0,2 | 7,3 | 6,2 | 0,7 | 3,3 | -10,1 | -3,6 |
| Oct | 10,9 | 5,8 | -0,1 | -0,6 | -1,0 | | |
| Nov | 9,3 | 5,7 | -7,2 | 4,0 | 1,8 | | |
| Dec | 3,7 | 5,7 | 0,3 | 0,0 | 3,4 | | |
| Total | 8,3 | 5,6 | 0,7 | 1,7 | 2,1 | | |

Table 3 – Seasonally adjusted wholesale trade sales at constant 2015 prices

| Month | R million | | | | Month-on-month % change | | | |
|-------|-----------|---------|---------|---------|-------------------------|------|------|------|
| | 2014 | 2015 | 2016 | 2017 | 2014 | 2015 | 2016 | 2017 |
| Jan | 146 337 | 146 709 | 146 441 | 146 484 | 0,4 | 1,4 | 1,6 | -2,3 |
| Feb | 145 776 | 147 996 | 149 836 | 139 395 | -0,4 | 0,9 | 2,3 | -4,8 |
| Mar | 140 502 | 149 552 | 149 190 | 144 555 | -3,6 | 1,1 | -0,4 | 3,7 |
| Apr | 146 250 | 142 897 | 146 051 | 149 970 | 4,1 | -4,4 | -2,1 | 3,7 |
| May | 141 894 | 146 155 | 151 890 | 144 781 | -3,0 | 2,3 | 4,0 | -3,5 |
| Jun | 144 640 | 145 400 | 149 360 | 146 050 | 1,9 | -0,5 | -1,7 | 0,9 |
| Jul | 138 579 | 147 372 | 149 881 | 147 300 | -4,2 | 1,4 | 0,3 | 0,9 |
| Aug | 145 400 | 145 279 | 148 479 | 144 426 | 4,9 | -1,4 | -0,9 | -2,0 |
| Sep | 143 798 | 145 344 | 149 262 | 135 668 | -1,1 | 0,0 | 0,5 | -6,1 |
| Oct | 145 620 | 145 836 | 147 337 | | 1,3 | 0,3 | -1,3 | |
| Nov | 140 173 | 145 053 | 146 668 | | -3,7 | -0,5 | -0,5 | |
| Dec | 144 753 | 144 118 | 149 933 | | 3,3 | -0,6 | 2,2 | |

Table 4 – Wholesale trade sales at current prices (R million)

| Month | 2011 | 2012 | 2013 | 2014 | 2015 | 2016 | 2017 1/ |
|--------------|------------------|------------------|------------------|------------------|------------------|------------------|---------|
| Jan | 84 293 | 101 303 | 114 385 | 130 950 | 125 162 | 132 550 | 141 155 |
| Feb | 93 024 | 113 544 | 122 442 | 139 912 | 136 957 | 158 224 | 148 811 |
| Mar | 105 033 | 118 582 | 124 695 | 142 727 | 150 019 | 156 593 | 165 755 |
| Apr | 94 255 | 108 910 | 125 516 | 136 149 | 130 743 | 144 804 | 147 386 |
| May | 101 154 | 119 264 | 134 183 | 141 103 | 141 877 | 157 449 | 159 144 |
| Jun | 105 550 | 115 268 | 128 558 | 143 379 | 147 351 | 160 885 | 163 606 |
| Jul | 102 522 | 117 442 | 135 211 | 140 326 | 149 012 | 157 707 | 159 029 |
| Aug | 110 589 | 123 368 | 137 690 | 145 085 | 144 451 | 160 568 | 163 336 |
| Sep | 115 210 | 118 815 | 135 089 | 152 718 | 153 380 | 167 590 | 159 454 |
| Oct | 116 748 | 134 809 | 150 724 | 158 427 | 159 428 | 166 246 | |
| Nov | 124 792 | 142 381 | 158 261 | 153 108 | 162 898 | 176 328 | |
| Dec | 116 374 | 126 039 | 141 913 | 144 642 | 150 128 | 165 221 | |
| Total | 1 269 544 | 1 439 725 | 1 608 667 | 1 728 526 | 1 751 406 | 1 904 165 | |

1/ Figures for latest month are preliminary.

Table 5 – Year-on-year percentage change in wholesale trade sales at current prices

| Month | 2012 | 2013 | 2014 | 2015 | 2016 | 2017 | 2017 year-to-date |
|--------------|-------------|-------------|------------|------------|------------|------|----------------------|
| Jan | 20,2 | 12,9 | 14,5 | -4,4 | 5,9 | 6,5 | 6,5 |
| Feb | 22,1 | 7,8 | 14,3 | -2,1 | 15,5 | -5,9 | -0,3 |
| Mar | 12,9 | 5,2 | 14,5 | 5,1 | 4,4 | 5,9 | 1,9 |
| Apr | 15,5 | 15,2 | 8,5 | -4,0 | 10,8 | 1,8 | 1,8 |
| May | 17,9 | 12,5 | 5,2 | 0,5 | 11,0 | 1,1 | 1,7 |
| Jun | 9,2 | 11,5 | 11,5 | 2,8 | 9,2 | 1,7 | 1,7 |
| Jul | 14,6 | 15,1 | 3,8 | 6,2 | 5,8 | 0,8 | 1,6 |
| Aug | 11,6 | 11,6 | 5,4 | -0,4 | 11,2 | 1,7 | 1,6 |
| Sep | 3,1 | 13,7 | 13,0 | 0,4 | 9,3 | -4,9 | 0,8 |
| Oct | 15,5 | 11,8 | 5,1 | 0,6 | 4,3 | | |
| Nov | 14,1 | 11,2 | -3,3 | 6,4 | 8,2 | | |
| Dec | 8,3 | 12,6 | 1,9 | 3,8 | 10,1 | | |
| Total | 13,4 | 11,7 | 7,5 | 1,3 | 8,7 | | |

Table 6 – Seasonally adjusted wholesale trade sales at current prices

| Month | R million | | | | Month-on-month % change | | | |
|-------|-----------|---------|---------|---------|-------------------------|------|------|------|
| | 2014 | 2015 | 2016 | 2017 | 2014 | 2015 | 2016 | 2017 |
| Jan | 146 050 | 140 932 | 152 927 | 160 233 | 3,6 | -1,2 | 3,2 | -2,7 |
| Feb | 146 637 | 143 558 | 160 873 | 156 128 | 0,4 | 1,9 | 5,2 | -2,6 |
| Mar | 141 597 | 147 085 | 156 611 | 159 566 | -3,4 | 2,5 | -2,6 | 2,2 |
| Apr | 147 568 | 141 070 | 154 125 | 164 400 | 4,2 | -4,1 | -1,6 | 3,0 |
| May | 141 700 | 144 929 | 158 461 | 158 871 | -4,0 | 2,7 | 2,8 | -3,4 |
| Jun | 144 579 | 146 266 | 159 290 | 160 172 | 2,0 | 0,9 | 0,5 | 0,8 |
| Jul | 140 380 | 148 399 | 160 462 | 161 222 | -2,9 | 1,5 | 0,7 | 0,7 |
| Aug | 145 646 | 144 673 | 157 476 | 160 076 | 3,8 | -2,5 | -1,9 | -0,7 |
| Sep | 147 389 | 149 099 | 160 910 | 155 984 | 1,2 | 3,1 | 2,2 | -2,6 |
| Oct | 145 578 | 147 733 | 157 071 | | -1,2 | -0,9 | -2,4 | |
| Nov | 140 356 | 147 105 | 159 061 | | -3,6 | -0,4 | 1,3 | |
| Dec | 142 715 | 148 177 | 164 755 | | 1,7 | 0,7 | 3,6 | |

Table 7 – Wholesale trade sales at current prices by type of dealer (R million)

| Type of dealer | Apr-17 | May-17 | Jun-17 | Jul-17 | Aug-17 | Sep-17 1/ |
|--|----------------|----------------|----------------|----------------|----------------|----------------|
| Fee or contract basis | 5 553 | 7 114 | 7 468 | 7 405 | 6 698 | 5 873 |
| Agricultural raw materials and livestock | 10 242 | 12 912 | 14 245 | 15 171 | 13 169 | 11 200 |
| Food, beverages and tobacco | 24 295 | 26 331 | 27 825 | 25 011 | 26 518 | 25 674 |
| Textiles, clothing and footwear | 3 826 | 3 696 | 3 199 | 4 495 | 4 666 | 5 301 |
| Other household goods except precious stones | 19 256 | 21 172 | 21 006 | 19 863 | 21 963 | 22 912 |
| Precious stones, jewellery and silverware | 6 749 | 2 749 | 4 120 | 3 797 | 3 743 | 3 366 |
| Solid, liquid and gaseous fuels and related products | 30 108 | 30 526 | 30 891 | 30 635 | 31 972 | 30 789 |
| Metals and metal ores | 3 578 | 4 146 | 4 428 | 4 022 | 4 214 | 3 800 |
| Construction and building materials | 7 868 | 8 850 | 9 146 | 9 037 | 9 505 | 8 935 |
| Other intermediate products, waste and scrap | 6 431 | 7 481 | 6 968 | 7 868 | 8 497 | 8 753 |
| Machinery, equipment and supplies | 17 254 | 20 525 | 21 831 | 19 587 | 19 493 | 20 093 |
| Other goods | 12 226 | 13 643 | 12 479 | 12 138 | 12 898 | 12 758 |
| Total | 147 386 | 159 144 | 163 606 | 159 029 | 163 336 | 159 454 |

1/ Figures are preliminary.

Table 8 – Year-on-year percentage change in wholesale trade sales at current prices by type of dealer

| Type of dealer | Apr-17 | May-17 | Jun-17 | Jul-17 | Aug-17 | Sep-17 |
|--|------------|------------|------------|------------|------------|-------------|
| Fee or contract basis | -7,5 | -0,1 | -1,2 | 18,8 | 36,8 | -13,0 |
| Agricultural raw materials and livestock | -16,7 | -9,8 | -11,7 | -7,8 | -15,7 | -29,3 |
| Food, beverages and tobacco | 9,0 | 6,0 | 10,8 | 2,8 | -1,1 | -5,7 |
| Textiles, clothing and footwear | -17,3 | -1,0 | -21,0 | 3,0 | -8,5 | -8,8 |
| Other household goods except precious stones | -3,2 | -0,3 | -0,9 | 4,7 | 8,9 | 2,9 |
| Precious stones, jewellery and silverware | 62,8 | -0,8 | 30,3 | 56,8 | 14,0 | -20,1 |
| Solid, liquid and gaseous fuels and related products | 15,8 | 1,4 | 5,4 | 0,0 | 9,4 | 4,8 |
| Metals and metal ores | -8,3 | -0,9 | 10,9 | -0,2 | 1,0 | -10,7 |
| Construction and building materials | -8,7 | 1,6 | 6,8 | 3,9 | 5,5 | -11,5 |
| Other intermediate products, waste and scrap | -5,3 | 4,1 | -8,5 | 18,5 | 6,7 | 2,9 |
| Machinery, equipment and supplies | -7,9 | -3,9 | 5,1 | -13,8 | -3,5 | -3,4 |
| Other goods | 6,4 | 14,5 | -7,1 | -0,7 | -8,5 | 2,6 |
| Total | 1,8 | 1,1 | 1,7 | 0,8 | 1,7 | -4,9 |

Table 9 – Contribution of type of dealer to the year-on-year percentage change in wholesale trade sales at current prices

| Type of dealer | Apr-17 | May-17 | Jun-17 | Jul-17 | Aug-17 | Sep-17 |
|--|------------|------------|------------|------------|------------|-------------|
| Fee or contract basis | -0,3 | 0,0 | -0,1 | 0,8 | 1,1 | -0,5 |
| Agricultural raw materials and livestock | -1,4 | -0,9 | -1,2 | -0,8 | -1,5 | -2,8 |
| Food, beverages and tobacco | 1,4 | 0,9 | 1,7 | 0,4 | -0,2 | -0,9 |
| Textiles, clothing and footwear | -0,6 | 0,0 | -0,5 | 0,1 | -0,3 | -0,3 |
| Other household goods except precious stones | -0,4 | 0,0 | -0,1 | 0,6 | 1,1 | 0,4 |
| Precious stones, jewellery and silverware | 1,8 | 0,0 | 0,6 | 0,9 | 0,3 | -0,5 |
| Solid, liquid and gaseous fuels and related products | 2,8 | 0,3 | 1,0 | 0,0 | 1,7 | 0,8 |
| Metals and metal ores | -0,2 | 0,0 | 0,3 | 0,0 | 0,0 | -0,3 |
| Construction and building materials | -0,5 | 0,1 | 0,4 | 0,2 | 0,3 | -0,7 |
| Other intermediate products, waste and scrap | -0,2 | 0,2 | -0,4 | 0,8 | 0,3 | 0,1 |
| Machinery, equipment and supplies | -1,0 | -0,5 | 0,7 | -2,0 | -0,4 | -0,4 |
| Other goods | 0,5 | 1,1 | -0,6 | -0,1 | -0,7 | 0,2 |
| Total | 1,8 | 1,1 | 1,7 | 0,8 | 1,7 | -4,9 |

Survey information

- Introduction**
- 1 Statistics South Africa (Stats SA) conducts a monthly survey covering enterprises in the wholesale trade industry (see 4 below). This survey is based on a sample drawn from Stats SA's 2017 business sampling frame (BSF) that contains businesses registered at the South African Revenue Service (SARS) for value added tax (VAT) and income tax (IT). Stats SA continuously updates its BSF, which is linked to the SARS administrative data.
 - 2 In order to improve timeliness, some information for the latest month had to be estimated due to late response. These estimates will be revised in future statistical releases as soon as information becomes available. Published wholesale trade sales estimates exclude VAT.
- Purpose of the survey**
- 3 The results of the monthly wholesale trade sales survey are used to compile estimates of the gross domestic product (GDP) and its components, which are used in monitoring the state of the economy and formulation of economic policy. These statistics are also used in the analysis of comparative business and industry performance.
- Scope of the survey**
- 4 This survey covers wholesale enterprises according to the following types of dealers:
 - Wholesale trade on a fee or contract basis – sales by commission agents, commodity brokers, auctioneers and 'other' wholesale trade on a fee or contract basis;
 - Wholesale trade in agricultural raw materials and livestock;
 - Wholesale trade in food, beverages and tobacco;
 - Wholesale trade in textiles, clothing and footwear;
 - Wholesale trade in 'other' household goods except precious stones. This group includes wholesale trade in household furniture, requisites and appliances, wholesale trade in books and stationery, wholesale trade in pharmaceuticals and toiletries and wholesale trade in 'other' household goods not elsewhere classified;
 - Wholesale trade in precious stones, jewellery and silverware;
 - Wholesale trade in solid, liquid and gaseous fuels and related products;
 - Wholesale trade in metals and metal ores;
 - Wholesale trade in construction materials, hardware, plumbing and heating equipment and supplies;
 - Wholesale trade in 'other' intermediate products, waste and scrap;
 - Wholesale trade in machinery, equipment and supplies; and
 - Wholesale trade in 'other' goods. This group covers general wholesale trade and 'other' wholesale trade not classified elsewhere.
- Classification**
- 5 The 1993 edition of the *Standard Industrial Classification of all Economic Activities* (SIC), Fifth Edition, Report No, 09-90-02, was used to classify the statistical units in the survey. The SIC is based on the 1990 *International Standard Industrial Classification of all Economic Activities* (ISIC) with suitable adaptations for local conditions. Each enterprise is classified to the industry which reflects its predominant activity. Statistics in this publication are presented at SIC four digit level.
- Collection rate**
- 6 The preliminary collection rate for the survey on wholesale trade sales for September 2017 was 82,0%. The improved collection rate for August 2017 was 86,0%.

| | | |
|--------------------------------|-----------|---|
| Statistical unit | 7 | The statistical unit for which information is compiled and published is the enterprise, defined as a legal unit or a combination of legal units that includes and directly controls all functions necessary to carry out its sales activities. The statistical units are derived from and linked to the South African Revenue Service (SARS) administrative data. |
| Revised figures | 8 | Revised figures are mainly due to late submission of data to Stats SA, or respondents reporting revisions or corrections to their figures. Preliminary figures, as indicated in the relevant tables, are subject to change and when revised will not be indicated as such. |
| Related publications | 9 | Users may also refer to the following publication available from Stats SA: <ul style="list-style-type: none">• <i>Stats in Brief</i> issued annually. |
| Rounding-off of figures | 10 | Where figures have been rounded off, discrepancies may occur between sums of the component items and the totals. |
| Historical data | 11 | Historical wholesale trade sales data are available on the Stats SA website. To access the data electronically, use the following link: Click to download historical data |
| Past publications | 12 | Past wholesale trade sales releases are available on the Stats SA website. To access the releases electronically, use the following link: Click to download past releases |

Technical notes

Survey methodology and design

- 1 The survey is conducted monthly. Questionnaires are sent to a sample of 1 275 enterprises from a population of 19 534 enterprises. Completed questionnaires are required to be returned to Stats SA within 10 days after the end of the reference month. Email, fax and telephone reminders are used to follow up on non-respondents.
- 2 A stratified random sample was drawn at the SIC four-digit level in April 2017 from Stats SA's business sampling frame (BSF). Strata were formed using a combination of Standard Industrial Classification and the measure of size classes for enterprises (see point 3 below).

The Neyman optimal allocation formula given below was used to allocate samples to each stratum:

$$n_h = n * (N_h * S_h) / [\sum (N_i * S_i)].$$

Neyman allocation formula not only allocates sample sizes to each stratum but also calculates the relative precision for each stratum as well as the relative precision for all strata. The relative precision for these strata was 6,4%.

Class limits

- 3 The wholesale sampling frame is divided into four size groups. All large enterprises (size group one) are completely enumerated. Simple random sampling is applied to the remaining size groups (medium, small and very small). The total value of sales of the large enterprises (size group one) is added to the weighted totals of size group two, three and four to reflect the total value of sales.

Measure of size classes (Rand)

| Enterprise size | Size group | Lower limits | Upper limits |
|-----------------|------------|--------------|--------------|
| Very small | 4 | 2 314 764 | 27 000 000 |
| Small | 3 | 27 000 001 | 144 000 000 |
| Medium | 2 | 144 000 001 | 288 000 000 |
| Large | 1 | 288 000 001 | |

Sample weighting

- 4 For those strata not completely enumerated, the weights to produce estimates are the inverse ratio of the sampling fraction, modified to take account of non-response in the survey. Stratum estimates are calculated and then aggregated with the completely enumerated stratum to form group estimates. These procedures are consistent with international best practice.

Seasonal adjustment

- 5 Seasonally adjusted estimates are generated each month using the X-12-ARIMA Seasonal Adjustment Program developed by the US Bureau of the Census. Seasonal adjustment is a means of removing the estimated effects of normal seasonal variation from the series so that the effects of other influences on the series can be more clearly recognised. Seasonal adjustment does not aim to remove irregular or non-seasonal influences which may be present in any particular month. Influences that are volatile or unsystematic can still make it difficult to interpret the movement of the series even after adjustment for seasonal variations. Therefore, the month-to-month movements of seasonally adjusted estimates may not be reliable indicators of trend behaviour. The X-12-ARIMA procedure for wholesale trade sales is described in more detail on the Stats SA website: [Click to download seasonal adjustment wholesale trade sales August 2017](#)

Trend cycle

- 6 The trend is the long-term pattern or movement of a time series. The X-12-ARIMA Seasonal Adjustment Program is used for smoothing seasonally adjusted estimates to estimates of the underlying trend cycle.

- Constant prices**
- 7** Stats SA compiles its monthly estimates of wholesale trade sales at current prices from a survey of wholesalers in the formal sector. For January 1998 to December 2011, wholesale trade sales at constant prices were calculated using the 'all groups' PPI for domestic output, but excluding electricity and other utilities.
- From January 2012, wholesale trade sales at constant prices are compiled as follows:
- (1) Deflate sales of dealers in agricultural raw materials and livestock using the PPI for agriculture.
 - (2) Deflate sales of dealers in food, beverages and tobacco using the final manufacturing PPI for food products, beverages and tobacco.
 - (3) Deflate sales of dealers in textiles, clothing and footwear using the final manufacturing PPI for textiles, clothing and footwear.
 - (4) Deflate sales of dealers in solid, liquid and gaseous fuels and related products using the final manufacturing PPI for coal and petroleum products.
 - (5) Deflate sales of dealers in machinery, equipment and supplies using the final manufacturing PPIs for general and special purpose machinery; household appliances and office machinery; and electrical machinery and apparatus and subcomponents.
 - (6) Deflate the remaining wholesale trade sales using the headline PPI (final manufacturing) excluding the PPIs for food products, beverages and tobacco; textiles, clothing and footwear; coal and petroleum products; general and special purpose machinery; household appliances and office machinery; electrical machinery and apparatus and subcomponents; and transport equipment. The PPI for transport equipment is excluded because it measures producer prices of motor vehicles, which are not included in wholesale trade.
- Total wholesale trade sales at constant prices is obtained by aggregating (1) to (6).
- Reliability of estimates**
- 8** Data presented in this publication are based on information obtained from a sample and are, therefore, subject to sampling variability; that is, they may differ from the figures that would have been produced if the data had been obtained from all enterprises in the wholesale industry in South Africa. Estimates are subject to sampling and non-sampling errors.
- 9** Inaccuracies may occur because of imperfections in reporting by enterprises and errors made in the collection and processing of the data. Inaccuracies of this kind are referred to as non-sampling errors. Every effort is made to minimise non-sampling errors by careful design of questionnaires, testing them in pilot studies, editing reported data and implementing efficient operating procedures. Fluctuations may occur in consecutive months as a result of seasonal and economic factors.
- Month-on-month percentage change**
- 10** The month-on-month percentage change in a variable for any given month is the change between that month and the previous month, expressed as a percentage of the latter.
- Year-on-year percentage change**
- 11** The year-on-year percentage change in a variable for any given period is the change between that period and the corresponding period of the previous year, expressed as a percentage of the latter.
- Contribution (percentage points)**
- 12** The contribution (percentage points) to the year-on-year percentage change is calculated by multiplying the percentage change of each type of wholesaler by its corresponding weight, divided by 100. The weight is the percentage contribution of each type of wholesaler to total wholesale trade sales in the corresponding period of the previous year.

Glossary

Enterprise An enterprise is a legal entity or a combination of legal units that includes and directly controls all functions necessary to carry out its sales activities.

Industry An industry is made up of enterprises engaged in the same or similar kinds of economic activity. Industries are defined in the *System of National Accounts* (SNA) in the same way as in the *Standard Industrial Classification of All Economic Activities* (SIC), Fifth Edition, Report No, 09-90-02 of January 1993.

| | | |
|----------------------------------|-----------------|---|
| Symbols and abbreviations | BSF | Business sampling frame |
| | GDP | Gross domestic product |
| | ISIC | International Standard Industrial Classification |
| | SIC | Standard Industrial Classification of all Economic Activities |
| | SARS | South African Revenue Service |
| | Stats SA | Statistics South Africa |
| VAT | Value added tax | |

Wholesale trade Wholesale trade includes the resale (sale without transformation) of new and used goods and products to other wholesalers, retailers, agricultural, industrial, commercial, institutional and professional users either directly or through agents on a fee or contract basis.

Wholesaler A wholesaler is an enterprise deriving 50% or more of its turnover from sales of goods to other businesses and institutions.

Technical enquiries

Nthabiseng Sebeyi Telephone number: (012) 310 8930
Email: nthabisengs@statssa.gov.za

Keshnee Naidoo Telephone number: (012) 310 8423
Email: keshneen@statssa.gov.za

General information

Stats SA publishes approximately 300 different statistical releases each year. It is not economically viable to produce them in more than one of South Africa's eleven official languages. Since the releases are used extensively, not only locally but also by international economic and social-scientific communities. Stats SA releases are published in English only.

Stats SA has copyright on this publication. Users may apply the information as they wish, provided that they acknowledge Stats SA as the source of the basic data wherever they process, apply, utilise, publish or distribute the data; and also that they specify that the relevant application and analysis (where applicable) result from their own processing of the data.

Advance release calendar

A release calendar is disseminated on www.statssa.gov.za

Stats SA products

A complete set of Stats SA publications is available at the Stats SA Library and the following libraries:

National Library of South Africa, Pretoria Division
National Library of South Africa, Cape Town Division
Natal Society Library, Pietermaritzburg
Library of Parliament, Cape Town
Bloemfontein Public Library
Johannesburg Public Library
Eastern Cape Library Services, King William's Town
Central Regional Library, Polokwane
Central Reference Library, Mbombela
Central Reference Collection, Kimberley
Central Reference Library, Mmabatho

Stats SA also provides a subscription service.

Electronic services

A large range of data is available via online services. For more details about our electronic data services, contact Stats SA's user information service at (012) 310 8600.

You can visit us on the internet at: www.statssa.gov.za

General enquiries

User information services Telephone number: (012) 310 8600
Email address: info@statssa.gov.za

Postal address Private Bag X44, Pretoria, 0001

Produced by Stats SA