



**stats sa**

Department:  
Statistics South Africa  
**REPUBLIC OF SOUTH AFRICA**

Private Bag X44, Pretoria, 0001, South Africa, ISibalo House, Koch Street, Salvokop, Pretoria, 0002  
www.statssa.gov.za, info@statssa.gov.za, Tel +27 12 310 8911

## **STATISTICAL RELEASE**

### **P6141.2**

# Wholesale trade sales (Preliminary)

June 2019

The results published in the next publication (July 2019) will be based on a new sample. This is an annual procedure which typically affects the level of sales at both current and constant prices. To avoid breaks in time series and to minimise revisions to historical growth rates, historical sales levels will be revised (i.e. they will be linked to the estimates based on the new sample).

Embargoed until:  
15 August 2019  
10:00

ENQUIRIES:  
Keshnee Naidoo  
(012) 310 8423

FORTHCOMING ISSUE:  
July 2019

EXPECTED RELEASE DATE:  
19 September 2019



Dipalopalo tsa Aforikaborwa • Dipalopalo tsa Afrika Borwa • Ezezibalo zaseNingizimu Afrika • Tshitatistika Afrika Tshipembe • Tinhlayohlayo Afrika-Dzonga  
Statistieke Suid-Afrika • Dipalopalo tša Afrika Borwa • Telubalo taseNingizimu Afrika • EzeeNkcukacha maNani zoMzantsi Afrika • Iimbalobalo zeSewula Afrika

The South Africa I know, the home I understand



## Contents

<b>Sales at constant 2015 prices: results for June 2019</b> .....	<b>2</b>
Table A – Key growth rates in wholesale trade sales at constant 2015 prices .....	2
Figure 1 – Wholesale trade sales at constant 2015 prices.....	2
<b>Sales at current prices: results for June 2019</b> .....	<b>3</b>
Table B – Key growth rates in wholesale trade sales at current prices.....	3
Table C – Wholesale trade sales at current prices for the latest three months by type of dealer .....	3
<b>Tables</b> .....	<b>4</b>
Table 1 – Wholesale trade sales at constant 2015 prices (R million).....	4
Table 2 – Year-on-year percentage change in wholesale trade sales at constant 2015 prices.....	4
Table 3 – Seasonally adjusted wholesale trade sales at constant 2015 prices .....	4
Table 4 – Wholesale trade sales at current prices (R million) .....	5
Table 5 – Year-on-year percentage change in wholesale trade sales at current prices .....	5
Table 6 – Seasonally adjusted wholesale trade sales at current prices.....	5
Table 7 – Wholesale trade sales at current prices by type of dealer (R million) .....	6
Table 8 – Year-on-year percentage change in wholesale trade sales at current prices by type of dealer .....	6
Table 9 – Contribution of type of dealer to the year-on-year percentage change in wholesale trade sales at current prices.....	6
<b>Survey information</b> .....	<b>7</b>
<b>Technical notes</b> .....	<b>9</b>
<b>Glossary</b> .....	<b>11</b>
<b>Technical enquiries</b> .....	<b>11</b>
<b>General information</b> .....	<b>12</b>

**Sales at constant 2015 prices: results for June 2019**

**Table A – Key growth rates in wholesale trade sales at constant 2015 prices**

	Jan-19	Feb-19	Mar-19	Apr-19	May-19	Jun-19
Year-on-year % change, unadjusted	-0,3	0,6	-2,8	4,8	-0,6	-5,4
Month-on-month % change, seasonally adjusted	2,5	1,9	1,4	1,4	-2,0	-2,2
3-month % change, seasonally adjusted 1/	-5,8	-6,4	-1,3	2,5	3,8	0,8

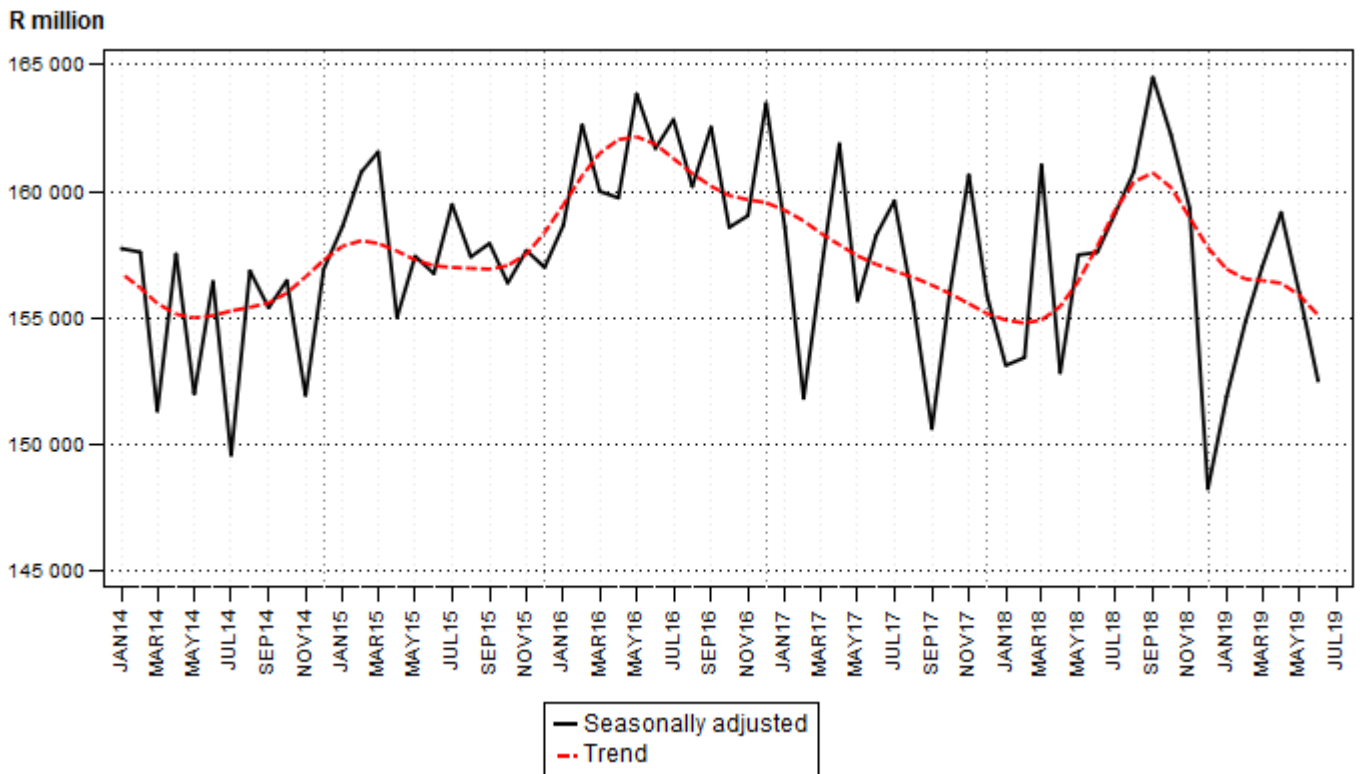
1/ Percentage change between the previous 3 months and the 3 months ending in the month indicated.

Measured in real terms (constant 2015 prices), wholesale trade sales decreased by 5,4% in June 2019 compared with June 2018.

Seasonally adjusted wholesale trade sales decreased by 2,2% in June 2019 compared with May 2019. This followed month-on-month changes of -2,0% in May 2019 and 1,4% in April 2019.

In the second quarter of 2019, seasonally adjusted wholesale trade sales increased by 0,8% compared with the previous quarter.

**Figure 1 – Wholesale trade sales at constant 2015 prices**



## Sales at current prices: results for June 2019

**Table B – Key growth rates in wholesale trade sales at current prices**

	Jan-19	Feb-19	Mar-19	Apr-19	May-19	Jun-19
Year-on-year % change, unadjusted	3,7	5,2	4,0	12,6	6,1	0,0
Month-on-month % change, seasonally adjusted	3,6	1,6	0,9	3,9	-0,9	-2,4
3-month % change, seasonally adjusted 1/	-5,0	-6,4	-1,7	2,9	5,4	3,6

1/ Percentage change between the previous 3 months and the 3 months ending in the month indicated.

Measured in nominal terms (current prices), wholesale trade was flat between June 2018 and June 2019. Dealers in solid, liquid and gaseous fuels and related products increased by 5,6% (contributing 1,3 percentage points) while dealers in precious stones, jewellery and silverware decreased by 26,3% (contributing -1,0 percentage point) – see Tables 8 and 9.

**Table C – Wholesale trade sales at current prices for the latest three months by type of dealer**

Type of dealer	Apr – Jun 2018 (R million)	Weight	Apr – Jun 2019 (R million)	% change between Apr – Jun 2018 and Apr – Jun 2019	Contribution (% points) to the total % change
Fee or contract basis	19 289	3,6	20 370	5,6	0,2
Agricultural raw materials and livestock	39 423	7,4	40 279	2,2	0,2
Food, beverages and tobacco	78 142	14,6	80 229	2,7	0,4
Textiles, clothing and footwear	12 695	2,4	14 235	12,1	0,3
Other household goods except precious stones	68 363	12,8	72 695	6,3	0,8
Precious stones, jewellery and silverware	16 966	3,2	15 893	-6,3	-0,2
Solid, liquid and gaseous fuels and related products	122 128	22,8	133 918	9,7	2,2
Metals and metal ores	13 393	2,5	13 441	0,4	0,0
Construction and building materials	28 949	5,4	31 676	9,4	0,5
Other intermediate products, waste and scrap	21 629	4,0	24 433	13,0	0,5
Machinery, equipment and supplies	68 760	12,9	72 417	5,3	0,7
Other goods	44 933	8,4	46 826	4,2	0,4
<b>Total</b>	<b>534 670</b>	<b>100,0</b>	<b>566 412</b>	<b>5,9</b>	<b>5,9</b>

Wholesale trade sales increased by 5,9% in the second quarter of 2019 compared with the second quarter of 2018. The main contributors to this increase were dealers in:

- solid, liquid and gaseous fuels and related products (9,7% and contributing 2,2 percentage points);
- 'other' household goods except precious stones (6,3% and contributing 0,8 of a percentage point); and
- machinery, equipment and supplies (5,3% and contributing 0,7 of a percentage point) – see Table C.

**Risenga Maluleke**  
Statistician-General

## Tables

**Table 1 – Wholesale trade sales at constant 2015 prices (R million)**

Month	2013	2014	2015	2016	2017	2018	2019 1/
Jan	134 041	143 034	142 539	138 846	140 448	137 143	136 720
Feb	143 389	151 842	155 566	164 555	146 484	147 509	148 416
Mar	144 045	152 980	165 584	163 058	162 923	162 541	158 050
Apr	146 202	145 339	141 919	148 406	143 600	140 179	146 870
May	156 662	150 801	152 881	161 143	155 519	158 379	157 483
Jun	148 425	152 943	157 467	162 628	161 150	158 244	149 696
Jul	155 238	148 901	158 784	157 994	154 198	155 987	
Aug	156 495	154 735	155 095	162 540	159 317	165 290	
Sep	153 623	163 211	164 854	170 558	155 726	165 350	
Oct	170 001	169 917	169 336	167 828	167 509	175 637	
Nov	178 306	165 686	172 758	175 926	177 455	177 664	
Dec	157 730	158 634	158 903	164 469	153 259	144 940	
<b>Total</b>	<b>1 844 157</b>	<b>1 858 023</b>	<b>1 895 686</b>	<b>1 937 951</b>	<b>1 877 588</b>	<b>1 888 863</b>	

1/ Figures for latest month are preliminary.

**Table 2 – Year-on-year percentage change in wholesale trade sales at constant 2015 prices**

Month	2014	2015	2016	2017	2018	2019	2019 year-to-date
Jan	6,7	-0,3	-2,6	1,2	-2,4	-0,3	-0,3
Feb	5,9	2,5	5,8	-11,0	0,7	0,6	0,2
Mar	6,2	8,2	-1,5	-0,1	-0,2	-2,8	-0,9
Apr	-0,6	-2,4	4,6	-3,2	-2,4	4,8	0,5
May	-3,7	1,4	5,4	-3,5	1,8	-0,6	0,2
Jun	3,0	3,0	3,3	-0,9	-1,8	-5,4	-0,7
Jul	-4,1	6,6	-0,5	-2,4	1,2		
Aug	-1,1	0,2	4,8	-2,0	3,7		
Sep	6,2	1,0	3,5	-8,7	6,2		
Oct	0,0	-0,3	-0,9	-0,2	4,9		
Nov	-7,1	4,3	1,8	0,9	0,1		
Dec	0,6	0,2	3,5	-6,8	-5,4		
<b>Total</b>	<b>0,8</b>	<b>2,0</b>	<b>2,2</b>	<b>-3,1</b>	<b>0,6</b>		

**Table 3 – Seasonally adjusted wholesale trade sales at constant 2015 prices**

Month	R million				Month-on-month % change			
	2016	2017	2018	2019	2016	2017	2018	2019
Jan	158 675	158 587	153 139	151 911	1,1	-3,0	-1,8	2,5
Feb	162 634	151 836	153 449	154 860	2,5	-4,3	0,2	1,9
Mar	160 011	156 701	161 057	157 045	-1,6	3,2	5,0	1,4
Apr	159 754	161 893	152 854	159 170	-0,2	3,3	-5,1	1,4
May	163 857	155 686	157 500	156 013	2,6	-3,8	3,0	-2,0
Jun	161 694	158 283	157 599	152 536	-1,3	1,7	0,1	-2,2
Jul	162 845	159 634	159 149		0,7	0,9	1,0	
Aug	160 202	155 619	160 803		-1,6	-2,5	1,0	
Sep	162 548	150 643	164 514		1,5	-3,2	2,3	
Oct	158 589	156 087	162 237		-2,4	3,6	-1,4	
Nov	159 052	160 657	159 339		0,3	2,9	-1,8	
Dec	163 491	155 895	148 269		2,8	-3,0	-6,9	

**Table 4 – Wholesale trade sales at current prices (R million)**

Month	2013	2014	2015	2016	2017	2018	2019 1/
Jan	123 809	141 738	135 473	143 470	152 784	158 601	164 465
Feb	132 529	151 438	148 239	171 258	161 070	169 712	178 467
Mar	134 968	154 486	162 377	169 493	179 410	185 302	192 657
Apr	135 856	147 365	141 513	156 733	158 178	161 936	182 342
May	145 238	152 727	153 565	170 421	172 540	185 278	196 552
Jun	139 150	155 191	159 490	174 139	178 149	187 456	187 518
Jul	146 349	151 886	161 289	170 700	170 871	186 989	
Aug	149 034	157 037	156 351	173 796	177 214	198 828	
Sep	146 217	165 299	166 015	181 396	175 562	200 244	
Oct	163 141	171 478	172 561	179 941	190 698	217 478	
Nov	171 299	165 721	176 317	190 855	203 911	219 846	
Dec	153 603	156 558	162 496	178 832	177 945	177 039	
<b>Total</b>	<b>1 741 193</b>	<b>1 870 924</b>	<b>1 895 686</b>	<b>2 061 034</b>	<b>2 098 332</b>	<b>2 248 709</b>	

1/ Figures for latest month are preliminary.

**Table 5 – Year-on-year percentage change in wholesale trade sales at current prices**

Month	2014	2015	2016	2017	2018	2019	2019 year-to-date
Jan	14,5	-4,4	5,9	6,5	3,8	3,7	3,7
Feb	14,3	-2,1	15,5	-5,9	5,4	5,2	4,5
Mar	14,5	5,1	4,4	5,9	3,3	4,0	4,3
Apr	8,5	-4,0	10,8	0,9	2,4	12,6	6,3
May	5,2	0,5	11,0	1,2	7,4	6,1	6,2
Jun	11,5	2,8	9,2	2,3	5,2	0,0	5,1
Jul	3,8	6,2	5,8	0,1	9,4		
Aug	5,4	-0,4	11,2	2,0	12,2		
Sep	13,1	0,4	9,3	-3,2	14,1		
Oct	5,1	0,6	4,3	6,0	14,0		
Nov	-3,3	6,4	8,2	6,8	7,8		
Dec	1,9	3,8	10,1	-0,5	-0,5		
<b>Total</b>	<b>7,5</b>	<b>1,3</b>	<b>8,7</b>	<b>1,8</b>	<b>7,2</b>		

**Table 6 – Seasonally adjusted wholesale trade sales at current prices**

Month	R million				Month-on-month % change			
	2016	2017	2018	2019	2016	2017	2018	2019
Jan	165 390	173 631	179 266	186 226	3,4	-2,3	-0,3	3,6
Feb	173 831	169 572	179 341	189 153	5,1	-2,3	0,0	1,6
Mar	168 540	173 288	184 721	190 781	-3,0	2,2	3,0	0,9
Apr	168 596	177 473	174 543	198 192	0,0	2,4	-5,5	3,9
May	171 819	172 341	185 301	196 377	1,9	-2,9	6,2	-0,9
Jun	173 811	176 026	188 443	191 716	1,2	2,1	1,7	-2,4
Jul	174 531	174 437	187 810		0,4	-0,9	-0,3	
Aug	170 031	172 961	193 387		-2,6	-0,8	3,0	
Sep	172 732	169 788	197 477		1,6	-1,8	2,1	
Oct	169 526	176 774	200 362		-1,9	4,1	1,5	
Nov	171 006	182 643	195 520		0,9	3,3	-2,4	
Dec	177 776	179 725	179 817		4,0	-1,6	-8,0	

**Table 7 – Wholesale trade sales at current prices by type of dealer (R million)**

Type of dealer	Jan-19	Feb-19	Mar-19	Apr-19	May-19	Jun-19 1/
Fee or contract basis	5 507	5 965	5 822	6 837	6 936	6 597
Agricultural raw materials and livestock	12 139	12 000	13 749	12 401	13 690	14 188
Food, beverages and tobacco	23 091	25 235	27 900	26 467	26 965	26 797
Textiles, clothing and footwear	3 787	4 552	4 550	5 268	5 368	3 599
Other household goods except precious stones	21 143	22 892	25 111	23 492	24 451	24 752
Precious stones, jewellery and silverware	4 599	4 165	5 427	5 457	5 030	5 406
Solid, liquid and gaseous fuels and related products	40 237	40 578	47 757	43 076	45 439	45 403
Metals and metal ores	3 631	4 431	4 085	4 519	4 722	4 200
Construction and building materials	7 538	8 839	9 918	9 290	12 590	9 796
Other intermediate products, waste and scrap	8 371	9 333	7 706	8 524	8 583	7 326
Machinery, equipment and supplies	22 459	26 150	26 792	22 930	24 351	25 136
Other goods	11 962	14 327	13 841	14 081	18 427	14 318
<b>Total</b>	<b>164 465</b>	<b>178 467</b>	<b>192 657</b>	<b>182 342</b>	<b>196 552</b>	<b>187 518</b>

1/ Figures are preliminary.

**Table 8 – Year-on-year percentage change in wholesale trade sales at current prices by type of dealer**

Type of dealer	Jan-19	Feb-19	Mar-19	Apr-19	May-19	Jun-19
Fee or contract basis	23,9	1,2	-15,3	0,0	8,8	8,5
Agricultural raw materials and livestock	11,4	5,8	17,7	15,8	-1,5	-4,2
Food, beverages and tobacco	-4,9	3,8	-1,4	8,4	1,6	-1,4
Textiles, clothing and footwear	25,9	7,0	-8,5	32,3	18,5	-14,0
Other household goods except precious stones	2,6	5,1	6,9	6,1	5,8	7,1
Precious stones, jewellery and silverware	23,6	-11,3	-20,6	52,3	-16,9	-26,3
Solid, liquid and gaseous fuels and related products	12,8	13,5	14,6	12,2	11,5	5,6
Metals and metal ores	1,7	-0,3	-9,5	16,5	-5,1	-7,5
Construction and building materials	-5,1	-5,1	5,0	7,9	20,5	-1,0
Other intermediate products, waste and scrap	0,0	12,1	1,7	36,6	4,4	2,2
Machinery, equipment and supplies	-2,9	8,7	10,8	12,2	5,6	-0,5
Other goods	-7,7	-7,9	-12,2	11,0	6,4	-4,0
<b>Total</b>	<b>3,7</b>	<b>5,2</b>	<b>4,0</b>	<b>12,6</b>	<b>6,1</b>	<b>0,0</b>

**Table 9 – Contribution of type of dealer to the year-on-year percentage change in wholesale trade sales at current prices**

Type of dealer	Jan-19	Feb-19	Mar-19	Apr-19	May-19	Jun-19
Fee or contract basis	0,7	0,0	-0,6	0,0	0,3	0,3
Agricultural raw materials and livestock	0,8	0,4	1,1	1,0	-0,1	-0,3
Food, beverages and tobacco	-0,7	0,5	-0,2	1,3	0,2	-0,2
Textiles, clothing and footwear	0,5	0,2	-0,2	0,8	0,4	-0,3
Other household goods except precious stones	0,3	0,7	0,9	0,8	0,7	0,9
Precious stones, jewellery and silverware	0,5	-0,3	-0,8	1,2	-0,6	-1,0
Solid, liquid and gaseous fuels and related products	2,9	2,8	3,3	2,9	2,5	1,3
Metals and metal ores	0,0	0,0	-0,2	0,4	-0,1	-0,2
Construction and building materials	-0,3	-0,3	0,3	0,4	1,1	-0,1
Other intermediate products, waste and scrap	0,0	0,6	0,1	1,4	0,2	0,1
Machinery, equipment and supplies	-0,4	1,2	1,4	1,5	0,7	-0,1
Other goods	-0,6	-0,7	-1,0	0,9	0,6	-0,3
<b>Total</b>	<b>3,7</b>	<b>5,2</b>	<b>4,0</b>	<b>12,6</b>	<b>6,1</b>	<b>0,0</b>

## Survey information

- Introduction**
- 1 Statistics South Africa (Stats SA) conducts a monthly survey covering enterprises in the wholesale trade industry (see 4 below). This survey is based on a sample drawn from Stats SA's 2018 business sampling frame (BSF) that contains businesses registered at the South African Revenue Service (SARS) for value added tax (VAT) and income tax (IT). Stats SA continuously updates its BSF, which is linked to the SARS administrative data.
  - 2 In order to improve timeliness, some information for the latest month had to be estimated due to late response. These estimates will be revised in future statistical releases as soon as information becomes available. Published wholesale trade sales estimates exclude VAT.
- Purpose of the survey**
- 3 The results of the monthly wholesale trade sales survey are used to compile estimates of the gross domestic product (GDP) and its components, which are used in monitoring the state of the economy and formulation of economic policy. These statistics are also used in the analysis of comparative business and industry performance.
- Scope of the survey**
- 4 This survey covers wholesale enterprises according to the following types of dealers:
    - Wholesale trade on a fee or contract basis – sales by commission agents, commodity brokers, auctioneers and 'other' wholesale trade on a fee or contract basis;
    - Wholesale trade in agricultural raw materials and livestock;
    - Wholesale trade in food, beverages and tobacco;
    - Wholesale trade in textiles, clothing and footwear;
    - Wholesale trade in 'other' household goods except precious stones. This group includes wholesale trade in household furniture, requisites and appliances, wholesale trade in books and stationery, wholesale trade in pharmaceuticals and toiletries and wholesale trade in 'other' household goods not elsewhere classified;
    - Wholesale trade in precious stones, jewellery and silverware;
    - Wholesale trade in solid, liquid and gaseous fuels and related products;
    - Wholesale trade in metals and metal ores;
    - Wholesale trade in construction materials, hardware, plumbing and heating equipment and supplies;
    - Wholesale trade in 'other' intermediate products, waste and scrap;
    - Wholesale trade in machinery, equipment and supplies; and
    - Wholesale trade in 'other' goods. This group covers general wholesale trade and 'other' wholesale trade not classified elsewhere.
- Classification**
- 5 The 1993 edition of the *Standard Industrial Classification of all Economic Activities* (SIC), Fifth Edition, Report No, 09-90-02, was used to classify the statistical units in the survey. The SIC is based on the 1990 *International Standard Industrial Classification of all Economic Activities* (ISIC) with suitable adaptations for local conditions. Each enterprise is classified to the industry which reflects its predominant activity. Statistics in this publication are presented at SIC four digit level.
- Collection rate**
- 6 The preliminary collection rate for the survey on wholesale trade sales for June 2019 was 84,3%. The improved collection rate for May 2019 was 90,0%.



<b>Statistical unit</b>	<b>7</b>	The statistical unit for which information is compiled and published is the enterprise, defined as a legal unit or a combination of legal units that includes and directly controls all functions necessary to carry out its sales activities. The statistical units are derived from and linked to the South African Revenue Service (SARS) administrative data.
<b>Revised figures</b>	<b>8</b>	Revised figures are mainly due to late submission of data to Stats SA, or respondents reporting revisions or corrections to their figures. Preliminary figures, as indicated in the relevant tables, are subject to change and when revised will not be indicated as such.
<b>Related publications</b>	<b>9</b>	Users may also refer to the following publication available from Stats SA: <ul style="list-style-type: none"><li>• <i>Stats in Brief</i> issued annually.</li></ul>
<b>Rounding-off of figures</b>	<b>10</b>	Where figures have been rounded off, discrepancies may occur between sums of the component items and the totals.
<b>Historical data</b>	<b>11</b>	Historical wholesale trade sales data are available on the Stats SA website. To access the data electronically, use the following link: <a href="#">Click to download historical data</a>
<b>Past publications</b>	<b>12</b>	Past wholesale trade sales releases are available on the Stats SA website. To access the releases electronically, use the following link: <a href="#">Click to download past releases</a>

**Technical notes**

**Survey methodology and design**

- 1 The survey is conducted monthly. Questionnaires are sent to a sample of 1 340 enterprises from a population of 20 372 enterprises. Completed questionnaires are required to be returned to Stats SA within 10 days after the end of the reference month. Email, fax and telephone reminders are used to follow up on non-respondents.
- 2 A stratified random sample was drawn at the SIC four-digit level in April 2018 from Stats SA's business sampling frame (BSF). Strata were formed using a combination of Standard Industrial Classification and the measure of size classes for enterprises (see point 3 below).

The Neyman optimal allocation formula given below was used to allocate samples to each stratum:

$$n_h = n * ( N_h * S_h ) / [ \sum ( N_i * S_i ) ] .$$

Neyman allocation formula not only allocates sample sizes to each stratum but also calculates the relative precision for each stratum as well as the relative precision for all strata. The relative precision for these strata was 5,8%.

**Class limits**

- 3 The wholesale sampling frame is divided into four size groups. All large enterprises (size group one) are completely enumerated. Simple random sampling is applied to the remaining size groups (medium, small and very small). The total value of sales of the large enterprises (size group one) is added to the weighted totals of size group two, three and four to reflect the total value of sales.

**Measure of size classes (Rand)**

Enterprise size	Size group	Lower limits	Upper limits
Very small	4	2 332 628	27 000 000
Small	3	27 000 001	144 000 000
Medium	2	144 000 001	288 000 000
Large	1	288 000 001	

**Sample weighting**

- 4 For those strata not completely enumerated, the weights to produce estimates are the inverse ratio of the sampling fraction, modified to take account of non-response in the survey. Stratum estimates are calculated and then aggregated with the completely enumerated stratum to form group estimates. These procedures are consistent with international best practice.

**Seasonal adjustment**

- 5 Seasonally adjusted estimates are generated each month using the X-12-ARIMA Seasonal Adjustment Program developed by the US Bureau of the Census. Seasonal adjustment is a means of removing the estimated effects of normal seasonal variation from the series so that the effects of other influences on the series can be more clearly recognised. Seasonal adjustment does not aim to remove irregular or non-seasonal influences which may be present in any particular month. Influences that are volatile or unsystematic can still make it difficult to interpret the movement of the series even after adjustment for seasonal variations. Therefore, the month-to-month movements of seasonally adjusted estimates may not be reliable indicators of trend behaviour. The X-12-ARIMA procedure for wholesale trade sales is described in more detail on the Stats SA website: [Click to download seasonal adjustment wholesale trade sales August 2017](#)

**Trend cycle**

- 6 The trend is the long-term pattern or movement of a time series. The X-12-ARIMA Seasonal Adjustment Program is used for smoothing seasonally adjusted estimates to estimates of the underlying trend cycle.

- Constant prices**
- 7** Stats SA compiles its monthly estimates of wholesale trade sales at current prices from a survey of wholesalers in the formal sector. For January 1998 to December 2011, wholesale trade sales at constant prices were calculated using the 'all groups' PPI for domestic output, but excluding electricity and other utilities.
- From January 2012, wholesale trade sales at constant prices are compiled as follows:
- (1) Deflate sales of dealers in agricultural raw materials and livestock using the PPI for agriculture.
  - (2) Deflate sales of dealers in food, beverages and tobacco using the final manufacturing PPI for food products, beverages and tobacco.
  - (3) Deflate sales of dealers in textiles, clothing and footwear using the final manufacturing PPI for textiles, clothing and footwear.
  - (4) Deflate sales of dealers in solid, liquid and gaseous fuels and related products using the final manufacturing PPI for coal and petroleum products.
  - (5) Deflate sales of dealers in machinery, equipment and supplies using the final manufacturing PPIs for general and special purpose machinery; household appliances and office machinery; and electrical machinery and communication and metering equipment.
  - (6) Deflate the remaining wholesale trade sales using the headline PPI (final manufacturing) excluding the PPIs for food products, beverages and tobacco; textiles, clothing and footwear; coal and petroleum products; general and special purpose machinery; household appliances and office machinery; electrical machinery and communication and metering equipment; and transport equipment. The PPI for transport equipment is excluded because it measures producer prices of motor vehicles, which are not included in wholesale trade.
- Total wholesale trade sales at constant prices is obtained by aggregating (1) to (6).
- Reliability of estimates**
- 8** Data presented in this publication are based on information obtained from a sample and are, therefore, subject to sampling variability; that is, they may differ from the figures that would have been produced if the data had been obtained from all enterprises in the wholesale industry in South Africa. Estimates are subject to sampling and non-sampling errors.
- 9** Inaccuracies may occur because of imperfections in reporting by enterprises and errors made in the collection and processing of the data. Inaccuracies of this kind are referred to as non-sampling errors. Every effort is made to minimise non-sampling errors by careful design of questionnaires, testing them in pilot studies, editing reported data and implementing efficient operating procedures. Fluctuations may occur in consecutive months as a result of seasonal and economic factors.
- Month-on-month percentage change**
- 10** The month-on-month percentage change in a variable for any given month is the change between that month and the previous month, expressed as a percentage of the latter.
- Year-on-year percentage change**
- 11** The year-on-year percentage change in a variable for any given period is the change between that period and the corresponding period of the previous year, expressed as a percentage of the latter.
- Contribution (percentage points)**
- 12** The contribution (percentage points) to the year-on-year percentage change is calculated by multiplying the percentage change of each type of wholesaler by its corresponding weight, divided by 100. The weight is the percentage contribution of each type of wholesaler to total wholesale trade sales in the corresponding period of the previous year.

## Glossary

<b>Enterprise</b>	An enterprise is a legal entity or a combination of legal units that includes and directly controls all functions necessary to carry out its sales activities.														
<b>Industry</b>	An industry is made up of enterprises engaged in the same or similar kinds of economic activity. Industries are defined in the <i>System of National Accounts</i> (SNA) in the same way as in the <i>Standard Industrial Classification of All Economic Activities</i> (SIC), Fifth Edition, Report No. 09-90-02 of January 1993.														
<b>Symbols and abbreviations</b>	<table><tr><td>BSF</td><td>Business sampling frame</td></tr><tr><td>GDP</td><td>Gross domestic product</td></tr><tr><td>ISIC</td><td>International Standard Industrial Classification</td></tr><tr><td>SIC</td><td>Standard Industrial Classification of all Economic Activities</td></tr><tr><td>SARS</td><td>South African Revenue Service</td></tr><tr><td>Stats SA</td><td>Statistics South Africa</td></tr><tr><td>VAT</td><td>Value added tax</td></tr></table>	BSF	Business sampling frame	GDP	Gross domestic product	ISIC	International Standard Industrial Classification	SIC	Standard Industrial Classification of all Economic Activities	SARS	South African Revenue Service	Stats SA	Statistics South Africa	VAT	Value added tax
BSF	Business sampling frame														
GDP	Gross domestic product														
ISIC	International Standard Industrial Classification														
SIC	Standard Industrial Classification of all Economic Activities														
SARS	South African Revenue Service														
Stats SA	Statistics South Africa														
VAT	Value added tax														
<b>Wholesale trade</b>	Wholesale trade includes the resale (sale without transformation) of new and used goods and products to other wholesalers, retailers, agricultural, industrial, commercial, institutional and professional users either directly or through agents on a fee or contract basis.														
<b>Wholesaler</b>	A wholesaler is an enterprise deriving 50% or more of its turnover from sales of goods to other businesses and institutions.														
<b>Technical enquiries</b>															
<b>Nthabiseng Sebeyi</b>	Telephone number: (012) 310 8930 Email: nthabisengs@statssa.gov.za														
<b>Keshnee Naidoo</b>	Telephone number: (012) 310 8423 Email: keshneen@statssa.gov.za														

## General information

Stats SA publishes approximately 300 different statistical releases each year. It is not economically viable to produce them in more than one of South Africa's eleven official languages. Since the releases are used extensively, not only locally but also by international economic and social-scientific communities. Stats SA releases are published in English only.

Stats SA has copyright on this publication. Users may apply the information as they wish, provided that they acknowledge Stats SA as the source of the basic data wherever they process, apply, utilise, publish or distribute the data; and also that they specify that the relevant application and analysis (where applicable) result from their own processing of the data.

## Advance release calendar

A release calendar is disseminated on [www.statssa.gov.za](http://www.statssa.gov.za)

## Stats SA products

A complete set of Stats SA publications is available at the Stats SA Library and the following libraries:

National Library of South Africa, Pretoria Division  
National Library of South Africa, Cape Town Division  
Natal Society Library, Pietermaritzburg  
Library of Parliament, Cape Town  
Bloemfontein Public Library  
Johannesburg Public Library  
Eastern Cape Library Services, King William's Town  
Central Regional Library, Polokwane  
Central Reference Library, Mbombela  
Central Reference Collection, Kimberley  
Central Reference Library, Mmabatho

Stats SA also provides a subscription service.

## Electronic services

A large range of data is available via online services. For more details about our electronic data services, contact Stats SA's user information service at (012) 310 8600.

You can visit us on the internet at: [www.statssa.gov.za](http://www.statssa.gov.za)

## General enquiries

User information services	Telephone number: (012) 310 8600 Email address: <a href="mailto:info@statssa.gov.za">info@statssa.gov.za</a>
---------------------------	---

Postal address	Private Bag X44, Pretoria, 0001
----------------	---------------------------------

*Produced by Stats SA*