



**stats sa**

Department:  
Statistics South Africa  
**REPUBLIC OF SOUTH AFRICA**

Private Bag X44, Pretoria, 0001, South Africa, ISibalo House, Koch Street, Salvokop, Pretoria, 0002  
www.statssa.gov.za, info@statssa.gov.za, Tel +27 12 310 8911

## **STATISTICAL RELEASE**

### **P6141.2**

# **Wholesale trade sales (Preliminary)**

**January 2021**

**Embargoed until:  
18 March 2021  
10:00**

**ENQUIRIES:**  
Keshnee Naidoo  
(083) 689 5341

**FORTHCOMING ISSUE:**  
February 2021

**EXPECTED RELEASE DATE:**  
15 April 2021



## Contents

<b>Sales at constant 2015 prices: results for January 2021 .....</b>	<b>2</b>
Table A – Key growth rates in wholesale trade sales at constant 2015 prices .....	2
Figure 1 – Wholesale trade sales at constant 2015 prices.....	2
<b>Sales at current prices: results for January 2021 .....</b>	<b>3</b>
Table B – Key growth rates in wholesale trade sales at current prices .....	3
Table C – Wholesale trade sales at current prices for the latest three months by type of dealer .....	3
<b>Tables .....</b>	<b>4</b>
Table 1 – Wholesale trade sales at constant 2015 prices (R million).....	4
Table 2 – Year-on-year percentage change in wholesale trade sales at constant 2015 prices.....	4
Table 3 – Seasonally adjusted wholesale trade sales at constant 2015 prices .....	4
Table 4 – Wholesale trade sales at current prices (R million) .....	5
Table 5 – Year-on-year percentage change in wholesale trade sales at current prices .....	5
Table 6 – Seasonally adjusted wholesale trade sales at current prices .....	5
Table 7 – Wholesale trade sales at current prices by type of dealer (R million) .....	6
Table 8 – Year-on-year percentage change in wholesale trade sales at current prices by type of dealer .....	6
Table 9 – Contribution of type of dealer to the year-on-year percentage change in wholesale trade sales at current prices .....	6
<b>Survey information.....</b>	<b>7</b>
<b>Technical notes .....</b>	<b>9</b>
<b>Glossary.....</b>	<b>11</b>
<b>Technical enquiries.....</b>	<b>11</b>
<b>General information .....</b>	<b>12</b>

**Sales at constant 2015 prices: results for January 2021**

**Table A – Key growth rates in wholesale trade sales at constant 2015 prices**

	Aug-20	Sep-20	Oct-20	Nov-20	Dec-20	Jan-21
Year-on-year % change, unadjusted	-3,8	0,0	-4,6	-3,9	1,8	-7,1
Month-on-month % change, seasonally adjusted	-1,0	0,0	-2,1	0,0	2,1	-0,6
3-month % change, seasonally adjusted 1/	18,0	24,6	7,6	1,0	-1,7	-0,2

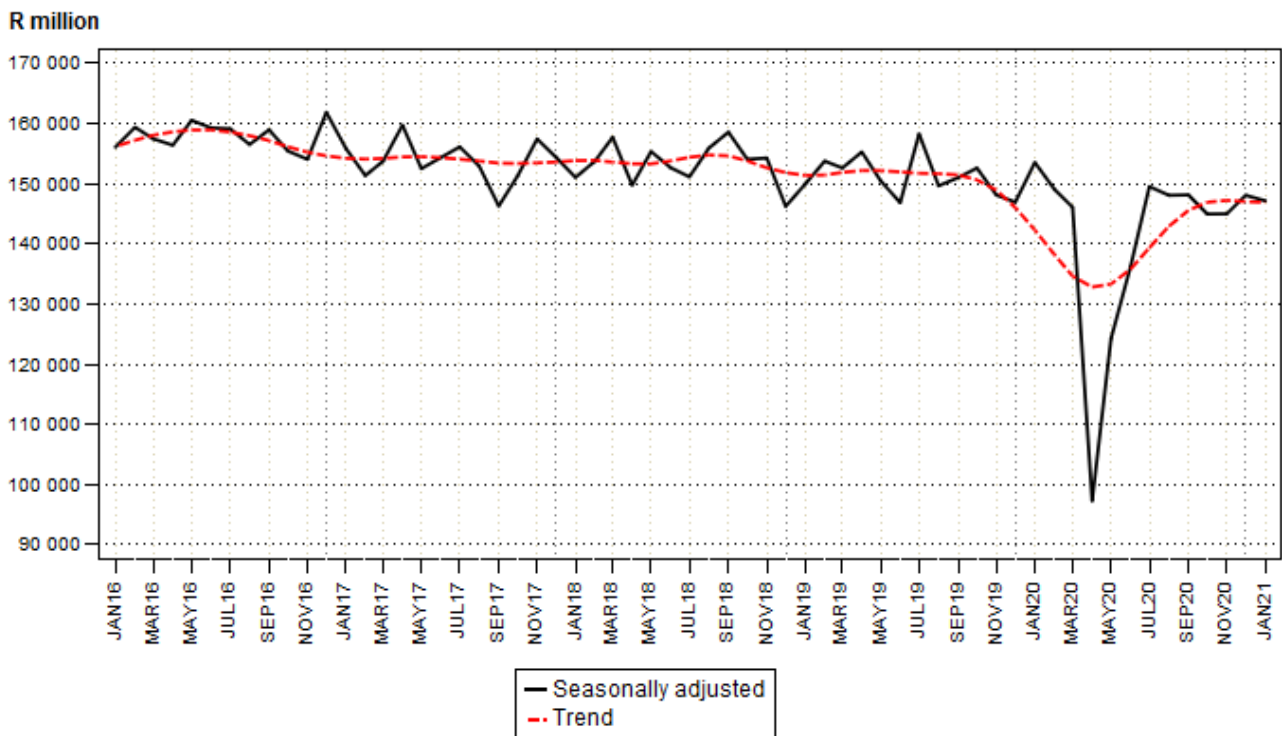
1/ Percentage change between the previous 3 months and the 3 months ending in the month indicated.

Measured in real terms (constant 2015 prices), wholesale trade sales decreased by 7,1% in January 2021 compared with January 2020.

Seasonally adjusted wholesale trade sales decreased by 0,6% in January 2021 compared with December 2020. This followed month-on-month changes of 2,1% in December 2020 and 0,0% in November 2020.

In the three months ended January 2021, seasonally adjusted wholesale trade sales decreased by 0,2% compared with the previous three months.

**Figure 1 – Wholesale trade sales at constant 2015 prices**



## Sales at current prices: results for January 2021

**Table B – Key growth rates in wholesale trade sales at current prices**

	Aug-20	Sep-20	Oct-20	Nov-20	Dec-20	Jan-21
Year-on-year % change, unadjusted	-3,4	0,7	-3,8	-2,9	2,5	-5,6
Month-on-month % change, seasonally adjusted	0,2	0,3	-0,2	-0,9	2,0	-0,1
3-month % change, seasonally adjusted 1/	22,1	29,4	10,8	3,0	0,1	0,4

1/ Percentage change between the previous 3 months and the 3 months ending in the month indicated.

Measured in nominal terms (current prices), wholesale trade sales decreased by 5,6% in January 2021 compared with January 2020. The main negative contributor was dealers in solid, liquid and gaseous fuels and related products (-24,4% and contributing -6,9 percentage points) – see Tables 8 and 9.

**Table C – Wholesale trade sales at current prices for the latest three months by type of dealer**

Type of dealer	Nov 2019 – Jan 2020 (R million)	Weight	Nov 2020 – Jan 2021 (R million)	% change between Nov 2019 – Jan 2020 and Nov 2020 – Jan 2021	Contribution (% points) to the total % change
Fee or contract basis	22 224	4,0	22 690	2,1	0,1
Agricultural raw materials and livestock	40 904	7,3	46 314	13,2	1,0
Food, beverages and tobacco	96 774	17,3	88 408	-8,6	-1,5
Textiles, clothing and footwear	9 063	1,6	8 432	-7,0	-0,1
Other household goods except precious stones	65 887	11,8	86 784	31,7	3,7
Precious stones, jewellery and silverware	13 548	2,4	5 964	-56,0	-1,3
Solid, liquid and gaseous fuels and related products	143 849	25,7	110 703	-23,0	-5,9
Metals and metal ores	10 233	1,8	11 390	11,3	0,2
Construction and building materials	25 382	4,5	31 040	22,3	1,0
Other intermediate products, waste and scrap	27 631	4,9	31 827	15,2	0,7
Machinery, equipment and supplies	64 710	11,6	66 866	3,3	0,4
Other goods	39 465	7,1	38 090	-3,5	-0,2
<b>Total</b>	<b>559 672</b>	<b>100,0</b>	<b>548 511</b>	<b>-2,0</b>	<b>-2,0</b>

Wholesale trade sales decreased by 2,0% in the three months ended January 2021 compared with the three months ended January 2020. The main negative contributor was dealers in solid, liquid and gaseous fuels and related products (-23,0% and contributing -5,9 percentage points).

The main positive contributor was dealers in 'other' household goods except precious stones (31,7% and contributing 3,7 percentage points) – see Table C.

**Risenga Maluleke**  
Statistician-General

## Tables

**Table 1 – Wholesale trade sales at constant 2015 prices (R million)**

Month	2015	2016	2017	2018	2019	2020	2021 1/
Jan	140 072	136 357	137 680	134 431	133 237	136 671	126 940
Feb	152 922	161 677	143 550	144 651	143 661	145 705	
Mar	162 436	160 352	159 717	159 536	153 783	148 743	
Apr	139 052	145 691	140 879	136 514	143 745	83 339	
May	149 704	158 174	152 460	155 382	150 487	120 608	
Jun	154 044	159 454	158 058	155 273	145 369	141 209	
Jul	155 319	154 867	151 509	150 834	160 884	152 909	
Aug	151 976	159 571	156 465	159 676	153 354	147 477	
Sep	161 670	167 498	152 801	160 136	154 279	154 247	
Oct	166 035	164 736	164 298	169 544	168 419	160 755	
Nov	169 476	172 520	174 022	172 804	164 061	157 671	
Dec	155 912	161 392	150 131	140 494	144 045	146 670	
<b>Total</b>	<b>1 858 618</b>	<b>1 902 289</b>	<b>1 841 570</b>	<b>1 839 275</b>	<b>1 815 324</b>	<b>1 696 004</b>	

1/ Figures for latest month are preliminary.

**Table 2 – Year-on-year percentage change in wholesale trade sales at constant 2015 prices**

Month	2016	2017	2018	2019	2020	2021	2021 year-to-date
Jan	-2,7	1,0	-2,4	-0,9	2,6	-7,1	-7,1
Feb	5,7	-11,2	0,8	-0,7	1,4		
Mar	-1,3	-0,4	-0,1	-3,6	-3,3		
Apr	4,8	-3,3	-3,1	5,3	-42,0		
May	5,7	-3,6	1,9	-3,2	-19,9		
Jun	3,5	-0,9	-1,8	-6,4	-2,9		
Jul	-0,3	-2,2	-0,4	6,7	-5,0		
Aug	5,0	-1,9	2,1	-4,0	-3,8		
Sep	3,6	-8,8	4,8	-3,7	0,0		
Oct	-0,8	-0,3	3,2	-0,7	-4,6		
Nov	1,8	0,9	-0,7	-5,1	-3,9		
Dec	3,5	-7,0	-6,4	2,5	1,8		
<b>Total</b>	<b>2,3</b>	<b>-3,2</b>	<b>-0,1</b>	<b>-1,3</b>	<b>-6,6</b>		

**Table 3 – Seasonally adjusted wholesale trade sales at constant 2015 prices**

Month	R million				Month-on-month % change			
	2018	2019	2020	2021	2018	2019	2020	2021
Jan	151 042	149 935	153 530	147 157	-2,2	2,5	4,5	-0,6
Feb	153 764	153 756	149 072		1,8	2,5	-2,9	
Mar	157 717	152 620	146 085		2,6	-0,7	-2,0	
Apr	149 756	155 268	97 274		-5,0	1,7	-33,4	
May	155 353	150 470	124 238		3,7	-3,1	27,7	
Jun	152 673	146 852	136 202		-1,7	-2,4	9,6	
Jul	151 138	158 279	149 530		-1,0	7,8	9,8	
Aug	155 924	149 655	148 074		3,2	-5,4	-1,0	
Sep	158 569	151 004	148 135		1,7	0,9	0,0	
Oct	154 065	152 598	144 960		-2,8	1,1	-2,1	
Nov	154 270	148 101	144 991		0,1	-2,9	0,0	
Dec	146 235	146 935	148 078		-5,2	-0,8	2,1	

**Table 4 – Wholesale trade sales at current prices (R million)**

Month	2015	2016	2017	2018	2019	2020	2021 1/
Jan	132 824	140 664	149 796	155 500	160 366	172 681	162 957
Feb	145 340	167 909	157 920	166 393	172 810	183 401	
Mar	159 202	166 178	175 902	181 678	187 642	185 731	
Apr	138 746	153 668	155 084	157 693	178 663	101 674	
May	150 562	167 088	169 166	182 054	188 309	145 181	
Jun	156 371	170 734	174 665	184 468	182 647	171 324	
Jul	158 135	167 361	167 530	181 177	200 851	189 865	
Aug	153 293	170 398	173 748	192 524	191 785	185 335	
Sep	162 769	177 849	172 129	194 427	192 740	193 996	
Oct	169 187	176 422	186 969	210 584	211 576	203 441	
Nov	172 870	187 122	199 923	214 427	205 646	199 672	
Dec	159 318	175 335	174 465	171 892	181 345	185 882	
<b>Total</b>	<b>1 858 617</b>	<b>2 020 728</b>	<b>2 057 297</b>	<b>2 192 817</b>	<b>2 254 380</b>	<b>2 118 183</b>	

1/ Figures for latest month are preliminary.

**Table 5 – Year-on-year percentage change in wholesale trade sales at current prices**

Month	2016	2017	2018	2019	2020	2021	2021 year-to-date
Jan	5,9	6,5	3,8	3,1	7,7	-5,6	-5,6
Feb	15,5	-5,9	5,4	3,9	6,1		
Mar	4,4	5,9	3,3	3,3	-1,0		
Apr	10,8	0,9	1,7	13,3	-43,1		
May	11,0	1,2	7,6	3,4	-22,9		
Jun	9,2	2,3	5,6	-1,0	-6,2		
Jul	5,8	0,1	8,1	10,9	-5,5		
Aug	11,2	2,0	10,8	-0,4	-3,4		
Sep	9,3	-3,2	13,0	-0,9	0,7		
Oct	4,3	6,0	12,6	0,5	-3,8		
Nov	8,2	6,8	7,3	-4,1	-2,9		
Dec	10,1	-0,5	-1,5	5,5	2,5		
<b>Total</b>	<b>8,7</b>	<b>1,8</b>	<b>6,6</b>	<b>2,8</b>	<b>-6,0</b>		

**Table 6 – Seasonally adjusted wholesale trade sales at current prices**

Month	R million				Month-on-month % change			
	2018	2019	2020	2021	2018	2019	2020	2021
Jan	176 167	181 957	195 035	187 706	-0,2	3,5	6,9	-0,1
Feb	176 108	183 241	191 727		0,0	0,7	-1,7	
Mar	181 010	184 805	181 010		2,8	0,9	-5,6	
Apr	169 968	194 235	112 869		-6,1	5,1	-37,6	
May	181 495	187 333	148 665		6,8	-3,6	31,7	
Jun	184 070	186 281	169 196		1,4	-0,6	13,8	
Jul	179 810	196 883	185 306		-2,3	5,7	9,5	
Aug	188 683	188 415	185 648		4,9	-4,3	0,2	
Sep	191 701	186 674	186 205		1,6	-0,9	0,3	
Oct	192 999	193 639	185 871		0,7	3,7	-0,2	
Nov	193 329	188 805	184 136		0,2	-2,5	-0,9	
Dec	175 826	182 447	187 906		-9,1	-3,4	2,0	

**Table 7 – Wholesale trade sales at current prices by type of dealer (R million)**

Type of dealer	Aug-20	Sep-20	Oct-20	Nov-20	Dec-20	Jan-21 1/
Fee or contract basis	9 950	11 260	14 035	10 415	7 885	4 390
Agricultural raw materials and livestock	13 691	15 701	14 612	16 527	17 068	12 719
Food, beverages and tobacco	32 190	31 965	32 195	31 896	34 120	22 392
Textiles, clothing and footwear	3 119	3 253	4 085	4 040	2 409	1 983
Other household goods except precious stones	27 655	25 988	28 167	30 759	27 865	28 160
Precious stones, jewellery and silverware	2 420	4 511	4 664	3 845	450	1 669
Solid, liquid and gaseous fuels and related products	36 649	37 872	35 841	36 040	37 975	36 688
Metals and metal ores	4 133	4 474	4 653	4 708	3 081	3 601
Construction and building materials	10 255	13 280	11 983	11 710	8 878	10 452
Other intermediate products, waste and scrap	9 457	11 388	12 893	11 997	10 870	8 960
Machinery, equipment and supplies	23 697	21 527	26 258	23 841	22 185	20 840
Other goods	12 118	12 778	14 054	13 894	13 094	11 102
<b>Total</b>	<b>185 335</b>	<b>193 996</b>	<b>203 441</b>	<b>199 672</b>	<b>185 882</b>	<b>162 957</b>

1/ Figures are preliminary.

**Table 8 – Year-on-year percentage change in wholesale trade sales at current prices by type of dealer**

Type of dealer	Aug-20	Sep-20	Oct-20	Nov-20	Dec-20	Jan-21
Fee or contract basis	24,0	29,8	46,5	16,2	14,0	-30,8
Agricultural raw materials and livestock	13,2	20,4	9,9	11,5	19,3	8,0
Food, beverages and tobacco	11,1	5,9	-2,6	-2,5	-4,9	-20,5
Textiles, clothing and footwear	-21,4	-22,0	-17,2	-0,4	-1,1	-22,9
Other household goods except precious stones	24,1	10,4	20,0	22,2	29,0	47,3
Precious stones, jewellery and silverware	-48,1	-8,3	-28,9	-24,0	-88,0	-64,8
Solid, liquid and gaseous fuels and related products	-24,8	-16,3	-26,3	-24,8	-20,0	-24,4
Metals and metal ores	-4,5	2,6	0,9	8,2	30,2	2,4
Construction and building materials	-8,0	44,4	7,2	6,5	23,6	45,1
Other intermediate products, waste and scrap	0,6	8,1	2,4	7,0	43,2	1,5
Machinery, equipment and supplies	-1,9	-14,0	-4,9	-4,3	16,0	0,8
Other goods	-13,6	-7,6	-12,3	-10,3	2,8	-1,2
<b>Total</b>	<b>-3,4</b>	<b>0,7</b>	<b>-3,8</b>	<b>-2,9</b>	<b>2,5</b>	<b>-5,6</b>

**Table 9 – Contribution of type of dealer to the year-on-year percentage change in wholesale trade sales at current prices**

Type of dealer	Aug-20	Sep-20	Oct-20	Nov-20	Dec-20	Jan-21
Fee or contract basis	1,0	1,3	2,1	0,7	0,5	-1,1
Agricultural raw materials and livestock	0,8	1,4	0,6	0,8	1,5	0,5
Food, beverages and tobacco	1,7	0,9	-0,4	-0,4	-1,0	-3,3
Textiles, clothing and footwear	-0,4	-0,5	-0,4	0,0	0,0	-0,3
Other household goods except precious stones	2,8	1,3	2,2	2,7	3,5	5,3
Precious stones, jewellery and silverware	-1,2	-0,2	-0,9	-0,6	-1,8	-1,7
Solid, liquid and gaseous fuels and related products	-6,3	-3,8	-6,0	-5,8	-5,2	-6,9
Metals and metal ores	-0,1	0,1	0,0	0,2	0,4	0,0
Construction and building materials	-0,5	2,1	0,4	0,3	0,9	1,9
Other intermediate products, waste and scrap	0,0	0,4	0,1	0,4	1,8	0,1
Machinery, equipment and supplies	-0,2	-1,8	-0,6	-0,5	1,7	0,1
Other goods	-1,0	-0,5	-0,9	-0,8	0,2	-0,1
<b>Total</b>	<b>-3,4</b>	<b>0,7</b>	<b>-3,8</b>	<b>-2,9</b>	<b>2,5</b>	<b>-5,6</b>

## Survey information

- Introduction**
- 1 Statistics South Africa (Stats SA) conducts a monthly survey covering enterprises in the wholesale trade industry (see 4 below). This survey is based on a sample drawn from Stats SA's 2019 business sampling frame (BSF) that contains businesses registered at the South African Revenue Service (SARS) for value added tax (VAT) and income tax (IT). Stats SA continuously updates its BSF, which is linked to the SARS administrative data.
  - 2 In order to improve timeliness, some information for the latest month had to be estimated due to late response. These estimates will be revised in future statistical releases as soon as information becomes available. Published wholesale trade sales estimates exclude VAT.
- Purpose of the survey**
- 3 The results of the monthly wholesale trade sales survey are used to compile estimates of the gross domestic product (GDP) and its components, which are used in monitoring the state of the economy and formulation of economic policy. These statistics are also used in the analysis of comparative business and industry performance.
- Scope of the survey**
- 4 This survey covers wholesale enterprises according to the following types of dealers:
    - Wholesale trade on a fee or contract basis – sales by commission agents, commodity brokers, auctioneers and 'other' wholesale trade on a fee or contract basis;
    - Wholesale trade in agricultural raw materials and livestock;
    - Wholesale trade in food, beverages and tobacco;
    - Wholesale trade in textiles, clothing and footwear;
    - Wholesale trade in 'other' household goods except precious stones. This group includes wholesale trade in household furniture, requisites and appliances, wholesale trade in books and stationery, wholesale trade in pharmaceuticals and toiletries and wholesale trade in 'other' household goods not elsewhere classified;
    - Wholesale trade in precious stones, jewellery and silverware;
    - Wholesale trade in solid, liquid and gaseous fuels and related products;
    - Wholesale trade in metals and metal ores;
    - Wholesale trade in construction materials, hardware, plumbing and heating equipment and supplies;
    - Wholesale trade in 'other' intermediate products, waste and scrap;
    - Wholesale trade in machinery, equipment and supplies; and
    - Wholesale trade in 'other' goods. This group covers general wholesale trade and 'other' wholesale trade not classified elsewhere.
- Classification**
- 5 The 1993 edition of the *Standard Industrial Classification of all Economic Activities* (SIC), Fifth Edition, Report No. 09-90-02, was used to classify the statistical units in the survey. The SIC is based on the 1990 *International Standard Industrial Classification of all Economic Activities* (ISIC) with suitable adaptations for local conditions. Each enterprise is classified to the industry which reflects its predominant activity. Statistics in this publication are presented at SIC four digit level.
- Collection rate**
- 6 The preliminary collection rate for the survey on wholesale trade sales for January 2021 was 73,7%. The improved collection rate for December 2020 was 82,1%.



<b>Statistical unit</b>	<b>7</b>	The statistical unit for which information is compiled and published is the enterprise, defined as a legal unit or a combination of legal units that includes and directly controls all functions necessary to carry out its sales activities. The statistical units are derived from and linked to the South African Revenue Service (SARS) administrative data.
<b>Revised figures</b>	<b>8</b>	Revised figures are mainly due to late submission of data to Stats SA, or respondents reporting revisions or corrections to their figures. Preliminary figures, as indicated in the relevant tables, are subject to change and when revised will not be indicated as such.
<b>Related publications</b>	<b>9</b>	Users may also refer to the following publication available from Stats SA: <ul style="list-style-type: none"><li>• <i>Stats in Brief</i> issued annually.</li></ul>
<b>Rounding-off of figures</b>	<b>10</b>	Where figures have been rounded off, discrepancies may occur between sums of the component items and the totals.
<b>Historical data</b>	<b>11</b>	Historical wholesale trade sales data are available on the Stats SA website. To access the data electronically, use the following link: <a href="#">Click to download historical data</a>
<b>Past publications</b>	<b>12</b>	Past wholesale trade sales releases are available on the Stats SA website. To access the releases electronically, use the following link: <a href="#">Click to download past releases</a>

**Technical notes**

**Survey methodology and design**

- 1 The survey is conducted monthly. Questionnaires are sent to a sample of 1 423 enterprises from a population of 19 570 enterprises. Completed questionnaires are required to be returned to Stats SA within 10 days after the end of the reference month. Email, fax and telephone reminders are used to follow up on non-respondents.
- 2 A stratified random sample was drawn at the SIC four-digit level in April 2019 from Stats SA’s business sampling frame (BSF). Strata were formed using a combination of Standard Industrial Classification and the measure of size classes for enterprises (see point 3 below). The Neyman optimal allocation formula given below was used to allocate samples to each stratum:

$$n_h = n * ( N_h * S_h ) / [ \sum ( N_i * S_i ) ] .$$

Neyman allocation formula not only allocates sample sizes to each stratum but also calculates the relative precision for each stratum as well as the relative precision for all strata. The relative precision for these strata was 5,8%.

**Class limits**

- 3 The wholesale sampling frame is divided into four size groups. All large enterprises (size group one) are completely enumerated. Simple random sampling is applied to the remaining size groups (medium, small and very small). The total value of sales of the large enterprises (size group one) is added to the weighted totals of size group two, three and four to reflect the total value of sales.

**Measure of size classes (Rand)**

Enterprise size	Size group	Lower limits	Upper limits
Very small	4	2 656 495	27 000 000
Small	3	27 000 001	144 000 000
Medium	2	144 000 001	288 000 000
Large	1	288 000 001	

**Sample weighting**

- 4 For those strata not completely enumerated, the weights to produce estimates are the inverse ratio of the sampling fraction, modified to take account of non-response in the survey. Stratum estimates are calculated and then aggregated with the completely enumerated stratum to form group estimates. These procedures are consistent with international best practice.

**Seasonal adjustment**

- 5 Seasonally adjusted estimates are generated each month using the X-12-ARIMA Seasonal Adjustment Program developed by the US Bureau of the Census. Seasonal adjustment is a means of removing the estimated effects of normal seasonal variation from the series so that the effects of other influences on the series can be more clearly recognised. Seasonal adjustment does not aim to remove irregular or non-seasonal influences which may be present in any particular month. Influences that are volatile or unsystematic can still make it difficult to interpret the movement of the series even after adjustment for seasonal variations. Therefore, the month-to-month movements of seasonally adjusted estimates may not be reliable indicators of trend behaviour. The X-12-ARIMA procedure for wholesale trade sales is described in more detail on the Stats SA website:

[Click to download seasonal adjustment wholesale trade sales August 2017](#)

**Note:** Owing to the impact of the COVID-19 lockdown, a transitory change adjustment was applied to April 2020. Transitory (temporary) change describes a temporary effect on the level of a series after a certain point in time.

- Trend cycle** 6 The trend is the long-term pattern or movement of a time series. The X-12-ARIMA Seasonal Adjustment Program is used for smoothing seasonally adjusted estimates to estimates of the underlying trend cycle.
- Constant prices** 7 Stats SA compiles its monthly estimates of wholesale trade sales at current prices from a survey of wholesalers in the formal sector. For January 1998 to December 2011, wholesale trade sales at constant prices were calculated using the 'all groups' PPI for domestic output, but excluding electricity and other utilities.
- From January 2012, wholesale trade sales at constant prices are compiled as follows:
- (1) Deflate sales of dealers in agricultural raw materials and livestock using the PPI for agriculture.
  - (2) Deflate sales of dealers in food, beverages and tobacco using the final manufacturing PPI for food products, beverages and tobacco.
  - (3) Deflate sales of dealers in textiles, clothing and footwear using the final manufacturing PPI for textiles, clothing and footwear.
  - (4) Deflate sales of dealers in solid, liquid and gaseous fuels and related products using the final manufacturing PPI for coal and petroleum products.
  - (5) Deflate sales of dealers in machinery, equipment and supplies using the final manufacturing PPIs for general and special purpose machinery; household appliances and office machinery; and electrical machinery and communication and metering equipment.
  - (6) Deflate the remaining wholesale trade sales using the headline PPI (final manufacturing) excluding the PPIs for food products, beverages and tobacco; textiles, clothing and footwear; coal and petroleum products; general and special purpose machinery; household appliances and office machinery; electrical machinery and communication and metering equipment; and transport equipment. The PPI for transport equipment is excluded because it measures producer prices of motor vehicles, which are not included in wholesale trade.
- Total wholesale trade sales at constant prices is obtained by aggregating (1) to (6).
- Reliability of estimates** 8 Data presented in this publication are based on information obtained from a sample and are, therefore, subject to sampling variability; that is, they may differ from the figures that would have been produced if the data had been obtained from all enterprises in the wholesale industry in South Africa. Estimates are subject to sampling and non-sampling errors.
- 9 Inaccuracies may occur because of imperfections in reporting by enterprises and errors made in the collection and processing of the data. Inaccuracies of this kind are referred to as non-sampling errors. Every effort is made to minimise non-sampling errors by careful design of questionnaires, testing them in pilot studies, editing reported data and implementing efficient operating procedures. Fluctuations may occur in consecutive months as a result of seasonal and economic factors.
- Month-on-month percentage change** 10 The month-on-month percentage change in a variable for any given month is the change between that month and the previous month, expressed as a percentage of the latter.
- Year-on-year percentage change** 11 The year-on-year percentage change in a variable for any given period is the change between that period and the corresponding period of the previous year, expressed as a percentage of the latter.

**Contribution (percentage points)**      **12**      The contribution (percentage points) to the year-on-year percentage change is calculated by multiplying the percentage change of each type of wholesaler by its corresponding weight, divided by 100. The weight is the percentage contribution of each type of wholesaler to total wholesale trade sales in the corresponding period of the previous year.

## Glossary

**Enterprise**      An enterprise is a legal entity or a combination of legal units that includes and directly controls all functions necessary to carry out its sales activities.

**Industry**      An industry is made up of enterprises engaged in the same or similar kinds of economic activity. Industries are defined in the *System of National Accounts (SNA)* in the same way as in the *Standard Industrial Classification of All Economic Activities (SIC)*, Fifth Edition, Report No. 09-90-02 of January 1993.

**Symbols and abbreviations**

BSF	Business sampling frame
GDP	Gross domestic product
ISIC	International Standard Industrial Classification
SIC	Standard Industrial Classification of all Economic Activities
SARS	South African Revenue Service
Stats SA	Statistics South Africa
VAT	Value added tax

**Wholesale trade**      Wholesale trade includes the resale (sale without transformation) of new and used goods and products to other wholesalers, retailers, agricultural, industrial, commercial, institutional and professional users either directly or through agents on a fee or contract basis.

**Wholesaler**      A wholesaler is an enterprise deriving 50% or more of its turnover from sales of goods to other businesses and institutions.

## Technical enquiries

**Nthabiseng Sebeyi**      Telephone number: (076) 937 2147  
Email: nthabisengs@statssa.gov.za

**Keshnee Naidoo**      Telephone number: (083) 689 5341  
Email: keshneen@statssa.gov.za

## General information

Stats SA publishes approximately 300 different statistical releases each year. It is not economically viable to produce them in more than one of South Africa's eleven official languages. Since the releases are used extensively, not only locally but also by international economic and social-scientific communities. Stats SA releases are published in English only.

Stats SA has copyright on this publication. Users may apply the information as they wish, provided that they acknowledge Stats SA as the source of the basic data wherever they process, apply, utilise, publish or distribute the data; and also that they specify that the relevant application and analysis (where applicable) result from their own processing of the data.

## Advance release calendar

A release calendar is disseminated on [www.statssa.gov.za](http://www.statssa.gov.za)

## Stats SA products

A complete set of Stats SA publications is available at the Stats SA Library and the following libraries:

National Library of South Africa, Pretoria Division  
National Library of South Africa, Cape Town Division  
Natal Society Library, Pietermaritzburg  
Library of Parliament, Cape Town  
Bloemfontein Public Library  
Johannesburg Public Library  
Eastern Cape Library Services, King William's Town  
Central Regional Library, Polokwane  
Central Reference Library, Mbombela  
Central Reference Collection, Kimberley  
Central Reference Library, Mmabatho

Stats SA also provides a subscription service.

## Electronic services

A large range of data is available via online services. For more details about our electronic data services, contact Stats SA's user information service at (012) 310 8600.

You can visit us on the internet at: [www.statssa.gov.za](http://www.statssa.gov.za)

## General enquiries

User information services	Telephone number: (012) 310 8600 Email: <a href="mailto:info@statssa.gov.za">info@statssa.gov.za</a>
Orders/subscription services	Telephone number: (012) 310 8619 Email: <a href="mailto:millies@statssa.gov.za">millies@statssa.gov.za</a>
Postal address	Private Bag X44, Pretoria, 0001

*Produced by Stats SA*