



**stats sa**

Department:  
Statistics South Africa  
**REPUBLIC OF SOUTH AFRICA**

Private Bag X44, Pretoria, 0001, South Africa, ISibalo House, Koch Street, Salvokop, Pretoria, 0002  
www.statssa.gov.za, info@statssa.gov.za, Tel +27 12 310 8911

## **STATISTICAL RELEASE**

### **P5041.3**

# Selected building statistics of the private sector as reported by local government institutions

2023

Embargoed until:  
26 June 2024  
13:00

**ENQUIRIES:**  
Joyce Essel-Mensah  
Tel: (012) 310 8255

**FORTHCOMING ISSUE:**  
2024

**EXPECTED RELEASE DATE:**  
June 2025

Dipalopalo tsa Aforikaborwa • Dipalopalo tsa Aforika Borwa • Ezazibalo zaseNingizimu Afrika • Tshitatistika Afrika Tshipembe • Tinhlayo Afrika-Dzonga

Statistieke Suid-Afrika • Dipalopalo tsa Aforika Borwa • Telubalo zaseNingizimu Afrika • EzeeNkcukacha maNani zoMzantsi Afrika • Imibalobalo zeSewula Afrika

**IMPROVING LIVES THROUGH DATA ECOSYSTEMS**



## Contents

<b>Introduction</b> .....	<b>ii</b>
Key findings: Comparison between 2022 and 2023 .....	ii
Key findings for 2023 .....	vi
List of detailed tables .....	xii
List of municipalities covered in the monthly survey.....	xiii
Municipal reporting of building plans passed aggregated to provincial level .....	1
Municipal reporting of buildings completed aggregated to provincial level .....	17
Municipalities covered in the monthly survey .....	33
<b>Explanatory notes</b> .....	<b>40</b>
<b>Glossary</b> .....	<b>42</b>
<b>General information</b> .....	<b>43</b>

## Introduction

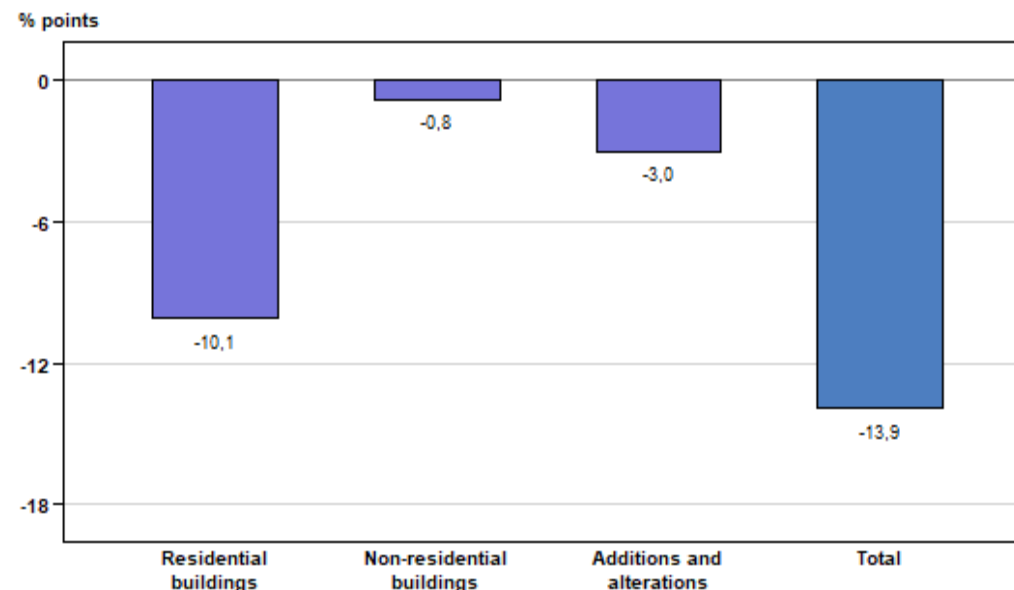
Data published in this statistical release are based on a monthly survey of metropolitan municipalities and large local municipalities on building plans passed and buildings completed for the private sector, released at national and provincial levels as P5041.1. This annual release contains aggregated data for the 12 months of 2023 by province, municipality and type of building.

### Key findings: Comparison between 2022 and 2023

**Table A.1 – Selected key figures regarding building plans passed at current prices**

Type of building	2022 R'000	2023 R'000	% change between 2022 and 2023	Contribution (% points) to the % change in value of building plans passed between 2022 and 2023	Difference in value between 2022 and 2023 R'000
<b>Residential buildings</b>	<b>62 270 443</b>	<b>50 361 562</b>	<b>-19,1</b>	<b>-10,1</b>	<b>-11 908 881</b>
Dwelling-houses	40 629 288	32 871 658	-19,1	-6,6	-7 757 630
Flats and townhouses	20 540 617	16 685 337	-18,8	-3,3	-3 855 280
Other residential buildings	1 100 538	804 567	-26,9	-0,3	-295 971
<b>Non-residential buildings</b>	<b>22 479 150</b>	<b>21 537 846</b>	<b>-4,2</b>	<b>-0,8</b>	<b>-941 304</b>
Office and banking space	2 778 827	2 931 535	5,5	0,1	152 708
Shopping space	4 851 853	5 028 405	3,6	0,1	176 552
Industrial and warehouse space	11 562 501	10 481 874	-9,3	-0,9	-1 080 627
Other non-residential buildings	3 285 969	3 096 032	-5,8	-0,2	-189 937
<b>Additions and alterations</b>	<b>33 186 516</b>	<b>29 646 017</b>	<b>-10,7</b>	<b>-3,0</b>	<b>-3 540 499</b>
<b>Total</b>	<b>117 936 109</b>	<b>101 545 425</b>	<b>-13,9</b>	<b>-13,9</b>	<b>-16 390 684</b>

**Figure A.1 – Contribution (percentage points) of type of building to the percentage change in the total value of building plans passed between 2022 and 2023**

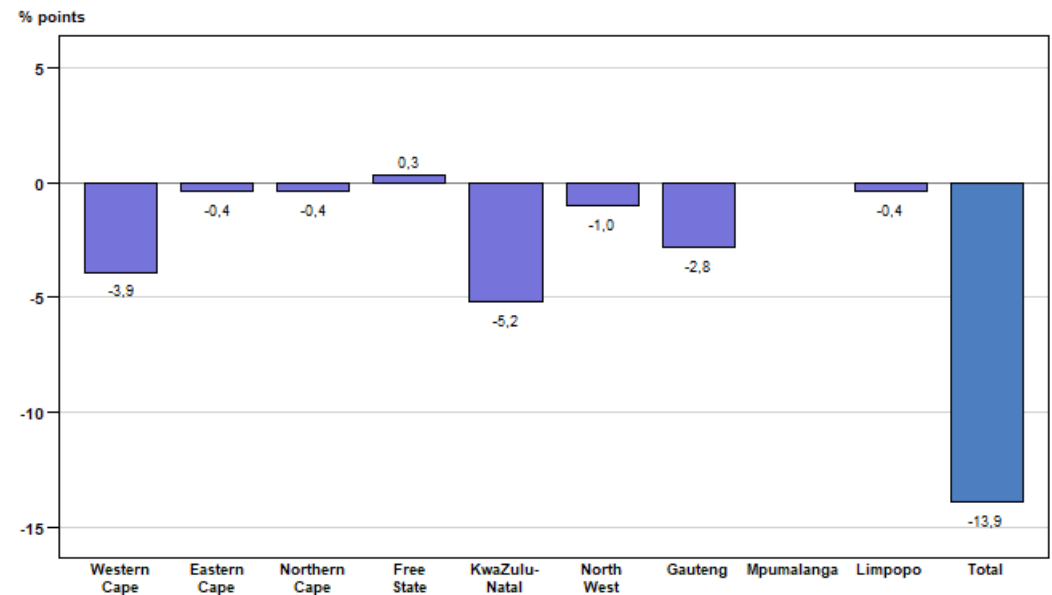


The value of building plans passed by larger municipalities (at current prices) decreased by 13,9% (-R16 390,7 million) in 2023 compared with 2022. Decreases were reported for residential buildings (-19,1% or -R11 908,9 million), additions and alterations (-10,7% or -R3 540,5 million) and non-residential buildings (-4,2% or -R941,3 million) – see Table A.1.

**Table A.2 – Building plans passed by larger municipalities at current prices by province: 2022 vs 2023**

Province	2022 R'000	2023 R'000	% change between 2022 and 2023	Contribution (% points) to the % change in the value of building plans passed between 2022 and 2023	Difference in value between 2022 and 2023 R'000
Western Cape	36 993 314	32 369 232	-12,5	-3,9	-4 624 082
Eastern Cape	7 369 820	6 857 026	-7,0	-0,4	-512 794
Northern Cape	1 515 517	1 021 439	-32,6	-0,4	-494 078
Free State	2 389 128	2 758 556	15,5	0,3	369 428
KwaZulu-Natal	19 754 115	13 614 275	-31,1	-5,2	-6 139 840
North West	4 271 004	3 073 096	-28,0	-1,0	-1 197 908
Gauteng	37 250 624	33 959 670	-8,8	-2,8	-3 290 954
Mpumalanga	5 640 419	5 628 171	-0,2	0,0	-12 248
Limpopo	2 752 168	2 263 960	-17,7	-0,4	-488 208
<b>Total</b>	<b>117 936 109</b>	<b>101 545 425</b>	<b>-13,9</b>	<b>-13,9</b>	<b>-16 390 684</b>

**Figure A.2 – Provincial contribution (percentage points) to the percentage change in the total value of building plans passed between 2022 and 2023**

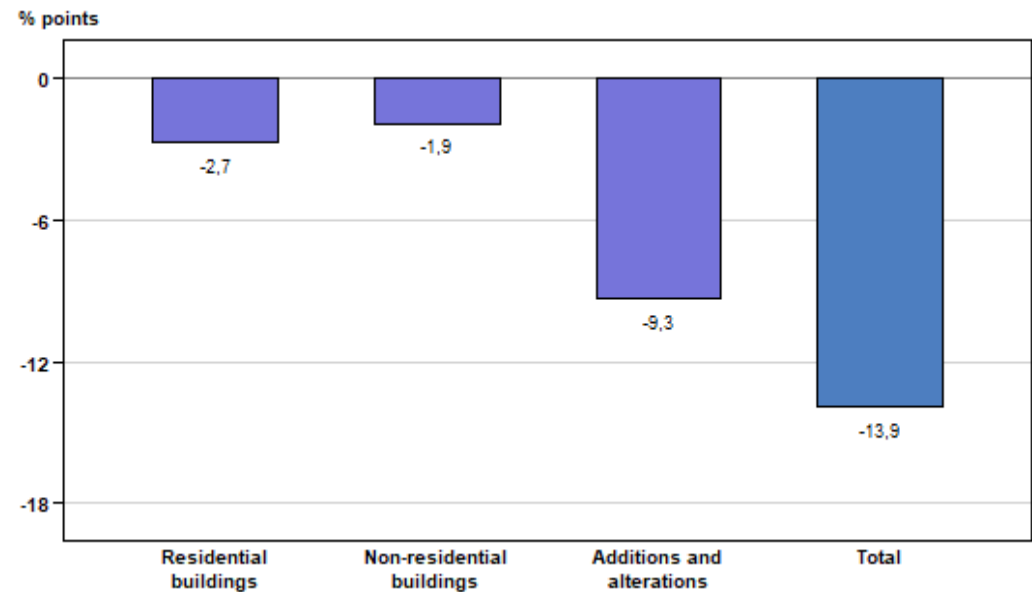


The year-on-year decrease of 13,9% in the total value of building plans passed in 2023 is mainly attributed to negative contributions reported by KwaZulu-Natal (contributing -5,2 percentage points or -R6 139,8 million), Western Cape (contributing -3,9 percentage points or -R4 624,1 million), Gauteng (contributing -2,8 percentage points or -R3 291,0 million) and North West (contributing -1,0 percentage point or -R1 197,9 million) – see Table A.2 and Figure A.2.

**Table B.1 – Selected key figures regarding buildings reported as completed at current prices**

Type of building	2022 R'000	2023 R'000	% change between 2022 and 2023	Contribution (% points) to the % change in value of buildings completed between 2022 and 2023	Difference in value between 2022 and 2023 R'000
<b>Residential buildings</b>	<b>37 189 537</b>	<b>35 371 417</b>	<b>-4,9</b>	<b>-2,7</b>	<b>-1 818 120</b>
Dwelling-houses	24 114 993	22 618 209	-6,2	-2,2	-1 496 784
Flats and townhouses	12 428 034	12 282 814	-1,2	-0,2	-145 220
Other residential buildings	646 510	470 394	-27,2	-0,3	-176 116
<b>Non-residential buildings</b>	<b>14 751 632</b>	<b>13 444 756</b>	<b>-8,9</b>	<b>-1,9</b>	<b>-1 306 876</b>
Office and banking space	1 135 248	2 140 865	88,6	1,5	1 005 617
Shopping space	3 523 346	3 536 438	0,4	0,0	13 092
Industrial and warehouse space	7 887 057	6 744 711	-14,5	-1,7	-1 142 346
Other non-residential buildings	2 205 981	1 022 742	-53,6	-1,7	-1 183 239
<b>Additions and alterations</b>	<b>15 875 075</b>	<b>9 585 638</b>	<b>-39,6</b>	<b>-9,3</b>	<b>-6 289 437</b>
<b>Total</b>	<b>67 816 244</b>	<b>58 401 811</b>	<b>-13,9</b>	<b>-13,9</b>	<b>-9 414 433</b>

**Figure B.1 – Contribution (percentage points) of type of building to the percentage change in the total value of buildings reported as completed between 2022 and 2023**

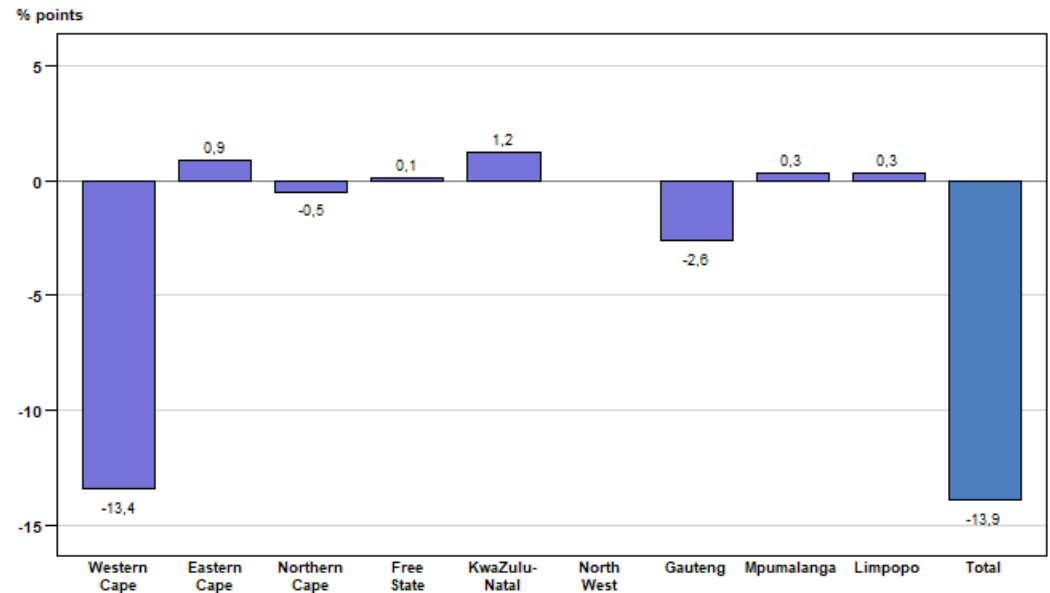


The value of buildings reported as completed (at current prices) decreased by 13,9% (-R9 414,4 million) in 2023 compared with 2022. Decreases were reported for additions and alterations (-39,6% or -R6 289,4 million), non-residential buildings (-8,9% or -R1 306,9 million) and residential buildings (-4,9% or -R1 818,1 million) – see Table B.1.

**Table B.2 – Buildings reported as completed by larger municipalities at current prices by province: 2022 vs 2023**

Province	2022 R'000	2023 R'000	% change between 2022 and 2023	Contribution (% points) to the % change in the value of buildings completed between 2022 and 2023	Difference in value between 2022 and 2023 R'000
Western Cape	27 085 321	17 984 009	-33,6	-13,4	-9 101 312
Eastern Cape	2 986 724	3 605 489	20,7	0,9	618 765
Northern Cape	767 340	408 523	-46,8	-0,5	-358 817
Free State	557 088	606 802	8,9	0,1	49 714
KwaZulu-Natal	9 770 918	10 551 128	8,0	1,2	780 210
North West	2 222 991	2 214 026	-0,4	0,0	-8 965
Gauteng	22 174 236	20 379 653	-8,1	-2,6	-1 794 583
Mpumalanga	1 177 929	1 353 560	14,9	0,3	175 631
Limpopo	1 073 697	1 298 621	20,9	0,3	224 924
<b>Total</b>	<b>67 816 244</b>	<b>58 401 811</b>	<b>-13,9</b>	<b>-13,9</b>	<b>-9 414 433</b>

**Figure B.2 – Provincial contribution (percentage points) to the percentage change in the total value of buildings reported as completed between 2022 and 2023**



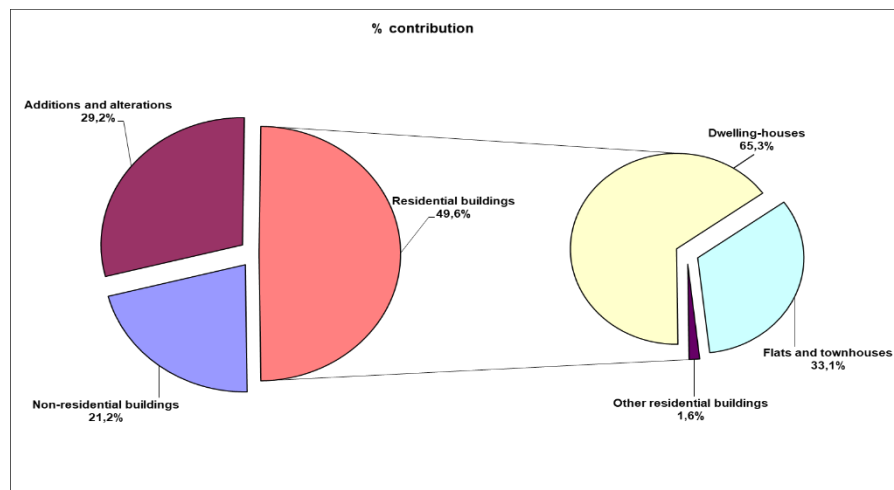
The largest provincial contributors to the year-on-year decrease of 13,9% in the value of buildings reported as completed were Western Cape (contributing -13,4 percentage points or -R9 101,3 million) and Gauteng (contributing -2,6 percentage points or -R1 794,6 million) – see Table B.2 and Figure B.2.

## Key findings for 2023

### Value of building plans passed by larger municipalities for 2023 by type of building

The value of building plans passed for 2023 amounted to R101 545,4 million, showing a decrease of 13,9% compared with 2022. Residential buildings contributed the most to the total value of building plans passed (49,6% or R50 361,6 million), followed by additions and alterations (29,2% or R29 646,0 million) and non-residential buildings (21,2% or R21 537,8 million) – see Figure 1 and Table 1 on pages 1 and 2.

**Figure 1 – Percentage contribution of type of building to the total value of building plans passed for 2023**

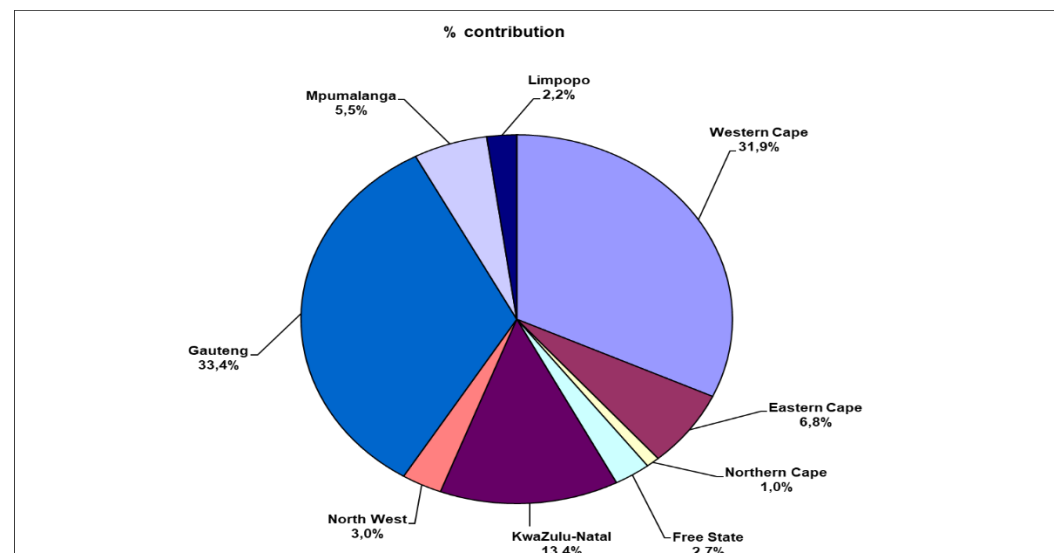


Regarding residential building plans passed, the largest contribution was reported for dwelling-houses (65,3% or R32 871,7 million), followed by flats and townhouses (33,1% or R16 685,3 million) and ‘other’ residential buildings (1,6% or R804,6 million) – see Table 2 on pages 3 and 4.

### Value of building plans passed by larger municipalities for 2023 by province

The highest provincial contributions to the total value of building plans passed (R101 545,4 million) for 2023 were reported for Gauteng (33,4% or R33 959,7 million), Western Cape (31,9% or R32 369,2 million) and KwaZulu-Natal (13,4% or R13 614,3 million) – see Figure 2 and Table 1 on pages 1 and 2. Table D (page viii) lists the largest municipal contributors to the value of building plans passed for 2023 by province.

**Figure 2 – Provincial percentage contribution to the total value of building plans passed for 2023**



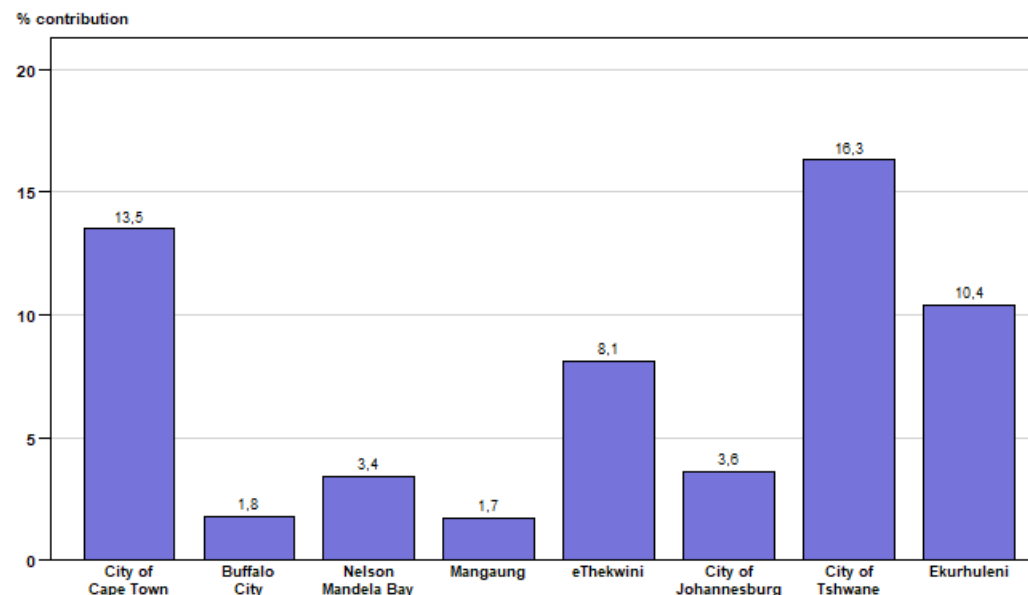
**Value of building plans passed by the eight metropolitan municipalities for 2023**

The combined value of building plans passed for the eight metropolitan municipalities contributed 58,7% or R59 589,4 million to the total value of building plans passed (R101 545,4 million) for 2023 – see Table C.

**Table C – Value of building plans passed by the eight metropolitan municipalities for 2023**

Metropolitan municipality	Value of building plans passed at metropolitan municipal level R million	Metropolitan municipal % contribution to the total value of building plans passed
City of Cape Town	13 701,6	13,5
Buffalo City	1 843,6	1,8
Nelson Mandela Bay	3 454,7	3,4
Mangaung	1 706,6	1,7
eThekwini	8 208,3	8,1
City of Johannesburg	3 635,6	3,6
City of Tshwane	16 523,6	16,3
Ekurhuleni	10 515,4	10,4
<b>Total metropolitan municipalities</b>	<b>59 589,4</b>	<b>58,7</b>

**Figure 3 – Metropolitan municipality percentage contribution to the total value of building plans passed for 2023**



The highest metropolitan municipality contribution to the total value of building plans passed for 2023 was reported by City of Tshwane (16,3% or R16 523,6 million), followed by City of Cape Town (13,5% or R13 701,6 million), Ekurhuleni (10,4% or R10 515,4 million) and eThekwini (8,1% or R8 208,3 million) – see Table C and Figure 3.



**Table D – The largest municipal contributors to the value of building plans passed for 2023 by province**

Province/municipality	Value of building plans passed at provincial/municipal level R million	Municipal % contribution to the value of building plans passed at provincial level
<b>Gauteng</b>	<b>33 959,7</b>	
City of Tshwane	16 523,6	48,7
Ekurhuleni	10 515,4	31,0
City of Johannesburg	3 635,6	10,7
Mogale City	834,1	2,5
Midvaal	811,2	2,4
<b>Western Cape</b>	<b>32 369,2</b>	
City of Cape Town	13 701,6	42,3
Knysna	6 235,5	19,3
George	3 264,7	10,1
Overstrand	1 881,9	5,8
Stellenbosch	1 868,0	5,8
<b>KwaZulu-Natal</b>	<b>13 614,3</b>	
eThekweni	8 208,3	60,3
KwaDukuza	2 552,3	18,7
Msunduzi	730,1	5,4
Umngeni	549,8	4,0
City of uMhlathuze	430,1	3,2
<b>Eastern Cape</b>	<b>6 857,0</b>	
Nelson Mandela Bay	3 454,7	50,4
Buffalo City	1 843,6	26,9
Kouga	845,6	12,3
Ndlambe	418,6	6,1
King Sabata Dalindyebo	193,6	2,8

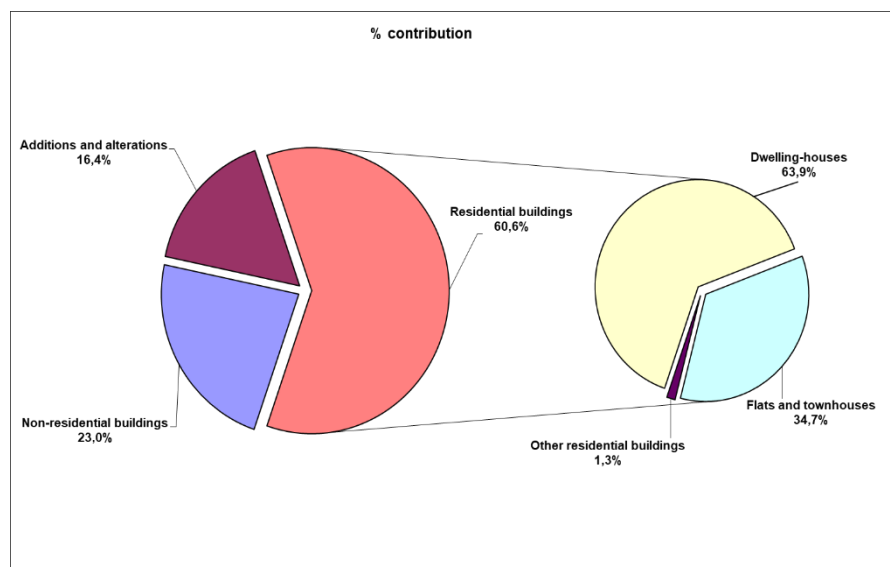
**Table D – The largest municipal contributors to the value of building plans passed for 2023 by province (concluded)**

Province/municipality	Value of building plans passed at provincial/municipal level R million	Municipal % contribution to the value of building plans passed at provincial level
<b>Mpumalanga</b>	<b>5 628,2</b>	
City of Mbombela	2 722,5	48,4
Steve Tshwete	1 146,0	20,4
Emalahleni	1 040,8	18,5
Govan Mbeki	332,9	5,9
Nkomazi	291,8	5,2
<b>North West</b>	<b>3 073,1</b>	
Rustenburg	931,2	30,3
City of Matlosana	543,9	17,7
Tlokwe City Council	510,7	16,6
Madibeng	483,3	15,7
Mahikeng	330,6	10,8
<b>Free State</b>	<b>2 758,6</b>	
Mangaung	1 706,6	61,9
Maluti-a-Phofung	253,2	9,2
Matjhabeng	249,9	9,1
Metsimaholo	195,8	7,1
Dihlabeng	151,6	5,5
<b>Limpopo</b>	<b>2 264,0</b>	
Polokwane	1 103,1	48,7
Greater Tzaneen	494,5	21,8
Mogalakwena	216,6	9,6
Thabazimbi	200,8	8,9
Musina	139,5	6,2
<b>Northern Cape</b>	<b>1 021,4</b>	
Sol Plaatje	584,4	57,2
Dawid Kruiper	337,6	33,1
Ga-Segonyana	50,6	5,0
Kai !Garib	48,9	4,8

**Value of buildings reported as completed to larger municipalities for 2023 by type of building**

The value of buildings reported as completed during 2023 amounted to R58 401,8 million, which is 13,9% lower compared with the R67 816,2 million reported for 2022. Residential buildings contributed the most to the total value of buildings reported as completed (60,6% or R35 371,4 million), followed by non-residential buildings (23,0% or R13 444,8 million) and additions and alterations (16,4% or R9 585,6 million) – see Figure 4 and Table 8 on pages 17 and 18.

**Figure 4 – Percentage contribution of type of building to the total value of buildings reported as completed during 2023**

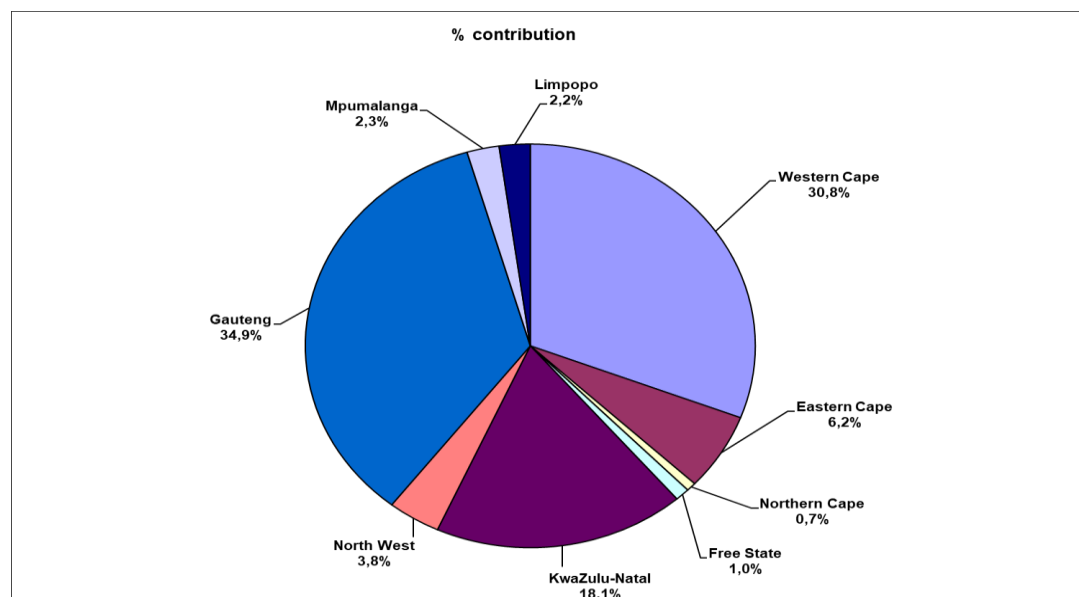


Regarding residential buildings reported as completed, the largest contributor was dwelling-houses (63,9% or R22 618,2 million), followed by flats and townhouses (34,7% or R12 282,8 million) and ‘other’ residential buildings (1,3% or R470,4 million) – see Table 9 on pages 19 and 20.

**Value of buildings reported as completed to larger municipalities for 2023 by province**

The largest provincial contributor to the total value of buildings reported as completed during 2023 was Gauteng (contributing 34,9% or R20 379,7 million to the total of R58 401,8 million for South Africa), followed by Western Cape (30,8% or R17 984,0 million) and KwaZulu-Natal (18,1% or R10 551,1 million) – see Figure 5 and Table 8 on pages 17 and 18. Table F (page xi) lists the largest municipal contributors to the value of buildings reported as completed for 2023 by province.

**Figure 5 – Provincial percentage contribution to the total value of buildings reported as completed during 2023**



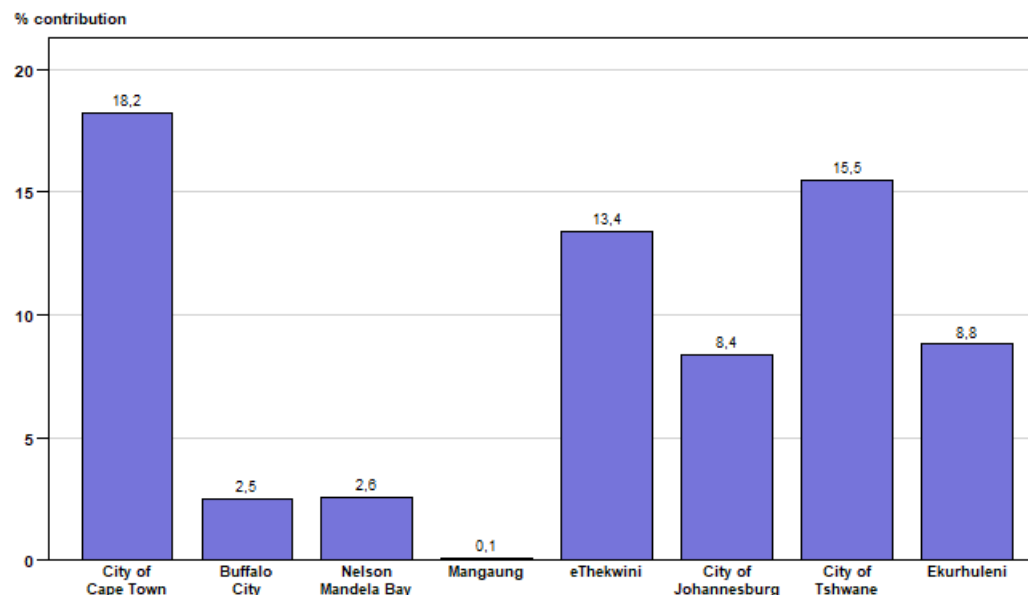
**Value of buildings reported as completed to the eight metropolitan municipalities for 2023**

The combined value of buildings reported as completed for the eight metropolitan municipalities contributed 69,5% or R40 613,7 million to the total value of buildings reported as completed (R58 401,8 million) during 2023 – see Table E.

**Table E – Value of buildings reported as completed to the eight metropolitan municipalities for 2023**

Metropolitan municipality	Value of buildings completed at metropolitan municipal level R million	Metropolitan municipal % contribution to the total value of buildings completed
City of Cape Town	10 641,9	18,2
Buffalo City	1 456,5	2,5
Nelson Mandela Bay	1 512,6	2,6
Mangaung	69,7	0,1
eThekwini	7 840,3	13,4
City of Johannesburg	4 921,5	8,4
City of Tshwane	9 036,1	15,5
Ekurhuleni	5 135,1	8,8
<b>Total metropolitan municipalities</b>	<b>40 613,7</b>	<b>69,5</b>

**Figure 6 – Metropolitan percentage contribution to the total value of buildings reported as completed for 2023**



The highest metropolitan contribution to the total value of buildings reported as completed during 2023 was City of Cape Town (18,2% or R10 641,9 million), followed by City of Tshwane (15,5% or R9 036,1 million), eThekwini (13,4% or R7 840,3 million), Ekurhuleni (8,8% or R5 135,1 million) and City of Johannesburg (8,4% or R4 921,5 million) – see Table E and Figure 6.

**Table F – The largest municipal contributors to the value of buildings reported as completed for 2023 by province**

Province/municipality	Value of buildings completed at provincial/municipal level R million	Municipal % contribution to the value of buildings completed at provincial level
<b>Gauteng</b>	<b>20 379,7</b>	
City of Tshwane	9 036,1	44,3
Ekurhuleni	5 135,1	25,2
City of Johannesburg	4 921,5	24,1
Mogale City	438,9	2,2
Midvaal	316,4	1,6
<b>Western Cape</b>	<b>17 984,0</b>	
City of Cape Town	10 641,9	59,2
George	1 547,7	8,6
Mossel Bay	1 219,9	6,8
Drakenstein	1 015,3	5,6
Overstrand	768,2	4,3
<b>KwaZulu-Natal</b>	<b>10 551,1</b>	
eThekweni	7 840,3	74,3
KwaDukuza	1 739,6	16,5
Umngeni	336,7	3,2
Ray Nkonyeni	157,4	1,5
City of uMhlatuze	155,3	1,5
<b>Eastern Cape</b>	<b>3 605,5</b>	
Nelson Mandela Bay	1 512,6	42,0
Buffalo City	1 456,5	40,4
Kouga	403,5	11,2
King Sabata Dalindyebo	108,2	3,0
Ndlambe	96,6	2,7

**Table F – The largest municipal contributors to the value of buildings reported as completed for 2023 by province (concluded)**

Province/municipality	Value of buildings completed at provincial/municipal level R million	Municipal % contribution to the value of buildings completed at provincial level
<b>North West</b>	<b>2 214,0</b>	
City of Matlosana	684,1	30,9
Madibeng	563,3	25,4
Rustenburg	415,4	18,8
Tlokwe City Council	274,7	12,4
Mahikeng	121,6	5,5
<b>Mpumalanga</b>	<b>1 353,6</b>	
City of Mbombela	593,7	43,9
Emalahleni	549,3	40,6
Govan Mbeki	163,3	12,1
Nkomazi	47,3	3,5
<b>Limpopo</b>	<b>1 298,6</b>	
Polokwane	969,3	74,6
Greater Tzaneen	259,7	20,0
Modimolle	39,4	3,0
Mogalakwena	28,4	2,2
<b>Free State</b>	<b>606,8</b>	
Dihlabeng	350,4	57,7
Metsimaholo	83,1	13,7
Mangaung	69,7	11,5
Matjhabeng	53,5	8,8
<b>Northern Cape</b>	<b>408,5</b>	
Dawid Kruiper	399,4	97,8
Sol Plaatje	9,1	2,2



**Risenga Maluleke**  
Statistician-General

## LIST OF DETAILED TABLES

### PART 1 – MUNICIPAL REPORTING OF BUILDING PLANS PASSED AGGREGATED TO PROVINCIAL LEVEL

Table 1	– Number, square metres and value of building plans passed by municipalities for residential buildings, non-residential buildings and additions and alterations by province .....	1
Table 2	– Number, square metres and value of residential building plans passed by municipalities: dwelling-houses, flats and townhouses and other residential buildings by province .....	3
Table 3	– Number, square metres and value of building plans passed by municipalities for dwelling-houses by size of dwelling-house and province.....	5
Table 4	– Number, square metres and value of building plans passed by municipalities for flats and townhouses by province .....	7
Table 5	– Number, square metres and value of building plans passed by municipalities for other residential buildings by province .....	9
Table 6.1	– Number, square metres and value of non-residential building plans passed by municipalities by province: office and banking space, shopping space and industrial and warehouse space .....	11
Table 6.2	– Number, square metres and value of non-residential building plans passed by municipalities by province: schools, nursery schools, crèches, hospitals, churches, sport clubs, recreation clubs and all other non-residential space .....	13
Table 7	– Number, square metres and value of building plans passed by municipalities for additions and alterations by province .....	15

### PART 2 – MUNICIPAL REPORTING OF BUILDINGS COMPLETED AGGREGATED TO PROVINCIAL LEVEL

Table 8	– Number, square metres and value of residential, non-residential and additions and alterations reported as completed to municipalities by province .....	17
Table 9	– Number, square metres and value of residential buildings reported as completed to municipalities: dwelling-houses, flats and townhouses and other residential buildings by province.....	19
Table 10	– Number, square metres and value of dwelling-houses reported as completed to municipalities by size of dwelling-house by province.....	21
Table 11	– Number, square metres and value of flats and townhouses reported as completed to municipalities by province .....	23
Table 12	– Number, square metres and value of other residential buildings reported as completed to municipalities by province .....	25
Table 13.1	– Number, square metres and value of non-residential buildings reported as completed to municipalities by province: office and banking space, shopping space and industrial and warehouse space .....	27
Table 13.2	– Number, square metres and value of non-residential buildings reported as completed to municipalities by province: schools, nursery schools, crèches, hospitals, churches, sport clubs, recreation clubs and all other non-residential space .....	29
Table 14	– Number, square metres and value of additions and alterations reported as completed to municipalities by province.....	31

**LIST OF MUNICIPALITIES COVERED IN THE MONTHLY SURVEY**

Table 15	– Municipalities covered in the monthly survey: Western Cape .....	33
Table 16	– Municipalities covered in the monthly survey: Eastern Cape .....	34
Table 17	– Municipalities covered in the monthly survey: Northern Cape .....	34
Table 18	– Municipalities covered in the monthly survey: Free State .....	35
Table 19	– Municipalities covered in the monthly survey: KwaZulu-Natal .....	36
Table 20	– Municipalities covered in the monthly survey: North West .....	37
Table 21	– Municipalities covered in the monthly survey: Gauteng .....	38
Table 22	– Municipalities covered in the monthly survey: Mpumalanga .....	39
Table 23	– Municipalities covered in the monthly survey: Limpopo .....	39

**Part 1**  
**Municipal reporting of building plans passed  
aggregated to provincial level**

**Table 1 – Number, square metres and value of building plans passed by municipalities for residential buildings, non-residential buildings and additions and alterations by province**

Municipal reporting aggregated to provincial level by year		Residential buildings		Non-residential buildings			Additions and alterations			Building plans passed by municipalities	
		Total square metres	Total value R'000	Number of buildings	Total square metres	Total value R'000	Number of plans	Total square metres	Total value R'000	Total square metres	Total value R'000
Western Cape	2021	2 461 171	17 751 051	429	553 241	3 858 538	12 953	1 140 680	8 858 268	4 155 092	30 467 857
	2022	2 795 835	20 946 921	504	641 698	4 596 001	13 067	1 385 065	11 450 392	4 822 598	36 993 314
	2023	2 231 249	17 538 104	585	645 671	4 877 351	9 767	1 198 079	9 953 777	4 074 999	32 369 232
Eastern Cape	2021	564 170	3 809 135	105	252 190	1 807 915	3 908	378 669	2 794 874	1 195 029	8 411 924
	2022	484 848	3 787 389	88	109 018	819 919	3 500	351 861	2 762 512	945 727	7 369 820
	2023	322 678	2 645 905	75	167 101	1 337 055	3 033	351 026	2 874 066	840 805	6 857 026
Northern Cape	2021	61 951	518 556	27	23 020	195 481	495	40 989	358 346	125 960	1 072 383
	2022	56 384	483 582	29	54 871	479 313	559	62 289	552 622	173 544	1 515 517
	2023	52 771	470 150	22	21 567	202 889	418	37 748	348 400	112 086	1 021 439
Free State	2021	173 892	1 342 615	39	50 491	330 431	1 118	108 008	807 041	332 391	2 480 087
	2022	162 541	1 344 161	40	58 525	397 231	886	76 281	647 736	297 347	2 389 128
	2023	160 259	1 345 775	45	78 030	613 203	932	93 297	799 578	331 586	2 758 556
KwaZulu-Natal	2021	877 303	9 000 493	184	681 247	4 475 541	4 082	519 562	5 417 962	2 078 112	18 893 996
	2022	944 252	9 714 613	192	596 259	4 375 476	4 029	520 210	5 664 026	2 060 721	19 754 115
	2023	498 096	5 079 627	146	490 453	3 887 801	3 188	424 009	4 646 847	1 412 558	13 614 275
North West	2021	378 928	2 461 002	78	185 512	1 155 475	1 605	167 709	1 173 940	732 149	4 790 417
	2022	327 727	2 224 499	99	164 705	1 045 994	1 233	136 591	1 000 511	629 023	4 271 004
	2023	246 660	1 689 974	96	93 458	613 067	1 057	102 686	770 055	442 804	3 073 096
Gauteng	2021	2 382 338	21 306 570	181	853 112	6 488 282	9 057	1 002 715	8 835 845	4 238 165	36 630 697
	2022	2 049 092	19 129 465	210	1 085 782	8 931 039	8 574	966 885	9 190 120	4 101 759	37 250 624
	2023	1 808 059	17 714 430	214	887 916	7 676 034	6 988	913 941	8 569 206	3 609 916	33 959 670
Mpumalanga	2021	382 778	2 428 799	52	56 019	362 607	2 257	167 622	1 102 767	606 419	3 894 173
	2022	389 216	2 782 248	121	199 604	1 346 873	2 225	214 154	1 511 298	802 974	5 640 419
	2023	334 179	2 488 974	117	232 941	1 849 740	1 715	179 705	1 289 457	746 825	5 628 171



**Table 1 – Number, square metres and value of building plans passed by municipalities for residential buildings, non-residential buildings and additions and alterations by province (concluded)**

Municipal reporting aggregated to provincial level by year		Residential buildings		Non-residential buildings			Additions and alterations			Building plans passed by municipalities	
		Total square metres	Total value R'000	Number of buildings	Total square metres	Total value R'000	Number of plans	Total square metres	Total value R'000	Total square metres	Total value R'000
Limpopo	2021	270 527	1 679 881	29	29 349	173 771	562	81 841	560 565	381 717	2 414 217
	2022	279 476	1 857 565	51	75 658	487 304	492	53 436	407 299	408 570	2 752 168
	2023	200 274	1 388 623	40	70 591	480 706	420	51 466	394 631	322 331	2 263 960
South Africa	2021	7 553 058	60 298 102	1 124	2 684 181	18 848 041	36 037	3 607 795	29 909 608	13 845 034	109 055 751
	2022	7 489 371	62 270 443	1 334	2 986 120	22 479 150	34 565	3 766 772	33 186 516	14 242 263	117 936 109
	2023	5 854 225	50 361 562	1 340	2 687 728	21 537 846	27 518	3 351 957	29 646 017	11 893 910	101 545 425

**Table 2 – Number, square metres and value of residential building plans passed by municipalities: dwelling-houses, flats and townhouses and other residential buildings by province**

Municipal reporting aggregated to provincial level by year		Residential buildings										
		Dwelling-houses			Flats and townhouses			Other residential buildings and tourism accommodation <sup>1</sup>			Residential building plans passed by municipalities	
		Number of dwelling-houses	Total square metres	Total value R'000	Number of units	Total square metres	Total value R'000	Number of buildings	Total square metres	Total value R'000	Total square metres	Total value R'000
Western Cape	2021	8 903	1 538 195	10 626 307	7 698	812 348	6 287 980	28	110 628	836 764	2 461 171	17 751 051
	2022	10 763	1 908 566	13 661 288	8 402	850 276	6 984 562	85	36 993	301 071	2 795 835	20 946 921
	2023	7 535	1 525 682	11 503 543	6 117	684 893	5 879 488	33	20 674	155 073	2 231 249	17 538 104
Eastern Cape	2021	4 177	467 235	3 099 613	765	91 068	665 622	9	5 867	43 900	564 170	3 809 135
	2022	2 082	335 089	2 605 555	926	102 838	812 019	3	46 921	369 815	484 848	3 787 389
	2023	1 724	292 016	2 395 287	203	25 794	210 628	20	4 868	39 990	322 678	2 645 905
Northern Cape	2021	279	52 808	439 641	145	9 143	78 915	0	0	0	61 951	518 556
	2022	235	48 357	412 422	4	2 642	22 295	4	5 385	48 865	56 384	483 582
	2023	257	43 889	386 543	12	1 165	10 967	6	7 717	72 640	52 771	470 150
Free State	2021	814	145 371	1 101 915	168	23 675	205 138	27	4 846	35 562	173 892	1 342 615
	2022	753	128 785	1 036 320	248	29 521	279 938	6	4 235	27 903	162 541	1 344 161
	2023	549	113 267	919 530	176	39 996	370 059	6	6 996	56 186	160 259	1 345 775
KwaZulu-Natal	2021	1 442	401 989	4 030 120	4 586	460 677	4 850 873	22	14 637	119 500	877 303	9 000 493
	2022	1 607	444 400	4 477 485	4 267	483 605	5 067 653	7	16 247	169 475	944 252	9 714 613
	2023	1 111	330 134	3 329 418	1 174	155 284	1 617 316	10	12 678	132 893	498 096	5 079 627
North West	2021	1 485	317 004	2 070 711	713	60 551	380 991	1	1 373	9 300	378 928	2 461 002
	2022	1 324	286 828	1 971 224	397	25 629	162 699	7	15 270	90 576	327 727	2 224 499
	2023	1 064	212 896	1 472 761	266	28 989	182 959	6	4 775	34 254	246 660	1 689 974
Gauteng	2021	9 521	1 551 058	13 095 569	8 636	817 461	8 092 849	5	13 819	118 152	2 382 338	21 306 570
	2022	7 505	1 392 310	12 614 813	7 191	655 708	6 501 847	6	1 074	12 805	2 049 092	19 129 465
	2023	6 038	1 041 619	9 666 459	8 840	758 338	7 981 563	5	8 102	66 408	1 808 059	17 714 430
Mpumalanga	2021	1 486	349 398	2 230 203	207	19 723	119 945	1	13 657	78 651	382 778	2 428 799
	2022	1 458	368 370	2 628 015	103	13 601	104 387	8	7 245	49 846	389 216	2 782 248
	2023	993	297 995	2 221 555	201	15 848	103 698	7	20 336	163 721	334 179	2 488 974

<sup>1</sup> Institutions for the disabled, boarding houses, hostels and tourism accommodation e.g. hotels, motels, guest-houses, holiday chalets, bed-and-breakfast accommodation and casinos.

**Table 2 – Number, square metres and value of residential building plans passed by municipalities: dwelling-houses, flats and townhouses and other residential buildings by province (concluded)**

Municipal reporting aggregated to provincial level by year		Residential buildings										
		Dwelling-houses			Flats and townhouses			Other residential buildings and tourism accommodation <sup>1</sup>			Residential building plans passed by municipalities	
		Number of dwelling-houses	Total square metres	Total value R'000	Number of units	Total square metres	Total value R'000	Number of buildings	Total square metres	Total value R'000	Total square metres	Total value R'000
Limpopo	2021	725	214 595	1 331 013	376	51 789	321 999	7	4 143	26 869	270 527	1 679 881
	2022	690	181 144	1 222 166	1 915	93 361	605 217	5	4 971	30 182	279 476	1 857 565
	2023	413	139 775	976 562	340	47 083	328 659	3	13 416	83 402	200 274	1 388 623
South Africa	2021	28 832	5 037 653	38 025 092	23 294	2 346 435	21 004 312	100	168 970	1 268 698	7 553 058	60 298 102
	2022	26 417	5 093 849	40 629 288	23 453	2 257 181	20 540 617	131	138 341	1 100 538	7 489 371	62 270 443
	2023	19 684	3 997 273	32 871 658	17 329	1 757 390	16 685 337	96	99 562	804 567	5 854 225	50 361 562

<sup>1</sup> Institutions for the disabled, boarding houses, hostels and tourism accommodation e.g. hotels, motels, guest-houses, holiday chalets, bed-and-breakfast accommodation and casinos.

**Table 3 – Number, square metres and value of building plans passed by municipalities for dwelling-houses by size of dwelling-house and province**

Municipal reporting aggregated to provincial level by year		Size of dwelling-house									Dwelling-house plans passed by municipalities		
		Equal to or smaller than 30 square metres			Larger than 30 square metres and smaller than 80 square metres			Equal to or larger than 80 square metres					
		Number of dwelling-houses	Total square metres	Total value R'000	Number of dwelling-houses	Total square metres	Total value R'000	Number of dwelling-houses	Total square metres	Total value R'000	Number of dwelling-houses	Total square metres	Total value R'000
Western Cape	2021	142	4 149	29 599	3 369	155 936	900 575	5 392	1 378 110	9 696 133	8 903	1 538 195	10 626 307
	2022	29	803	5 535	4 232	195 071	1 236 696	6 502	1 712 692	12 419 057	10 763	1 908 566	13 661 288
	2023	8	185	1 342	2 536	115 296	786 276	4 991	1 410 201	10 715 925	7 535	1 525 682	11 503 543
Eastern Cape	2021	0	0	0	2 830	128 258	583 412	1 347	338 977	2 516 201	4 177	467 235	3 099 613
	2022	0	0	0	886	43 418	270 578	1 196	291 671	2 334 977	2 082	335 089	2 605 555
	2023	0	0	0	741	34 537	257 377	983	257 479	2 137 910	1 724	292 016	2 395 287
Northern Cape	2021	1	24	210	72	4 111	35 735	206	48 673	403 696	279	52 808	439 641
	2022	1	20	188	31	1 891	17 096	203	46 446	395 138	235	48 357	412 422
	2023	7	162	1 525	50	2 784	26 209	200	40 943	358 809	257	43 889	386 543
Free State	2021	1	28	215	164	9 930	82 084	649	135 413	1 019 616	814	145 371	1 101 915
	2022	0	0	0	204	11 429	103 783	549	117 356	932 537	753	128 785	1 036 320
	2023	1	30	239	112	6 427	51 189	436	106 810	868 102	549	113 267	919 530
KwaZulu-Natal	2021	1	29	119	234	13 789	117 119	1 207	388 171	3 912 882	1 442	401 989	4 030 120
	2022	0	0	0	377	22 980	216 619	1 230	421 420	4 260 866	1 607	444 400	4 477 485
	2023	3	79	545	146	7 468	58 298	962	322 587	3 270 575	1 111	330 134	3 329 418
North West	2021	4	92	576	133	7 470	45 234	1 348	309 442	2 024 901	1 485	317 004	2 070 711
	2022	5	138	995	278	12 358	61 517	1 041	274 332	1 908 712	1 324	286 828	1 971 224
	2023	1	30	247	363	16 210	83 507	700	196 656	1 389 007	1 064	212 896	1 472 761
Gauteng	2021	0	0	0	5 410	285 784	1 883 121	4 111	1 265 274	11 212 448	9 521	1 551 058	13 095 569
	2022	4	83	561	3 672	211 034	1 564 818	3 829	1 181 193	11 049 434	7 505	1 392 310	12 614 813
	2023	0	0	0	3 187	164 683	1 206 866	2 851	876 936	8 459 593	6 038	1 041 619	9 666 459
Mpumalanga	2021	0	0	0	165	9 327	54 260	1 321	340 071	2 175 943	1 486	349 398	2 230 203
	2022	0	0	0	356	21 949	162 908	1 102	346 421	2 465 107	1 458	368 370	2 628 015
	2023	0	0	0	190	11 721	90 498	803	286 274	2 131 057	993	297 995	2 221 555

**Table 3 – Number, square metres and value of building plans passed by municipalities for dwelling-houses by size of dwelling-house and province (concluded)**

Municipal reporting aggregated to provincial level by year		Size of dwelling-house									Dwelling-house plans passed by municipalities		
		Equal to or smaller than 30 square metres			Larger than 30 square metres and smaller than 80 square metres			Equal to or larger than 80 square metres					
		Number of dwelling-houses	Total square metres	Total value R'000	Number of dwelling-houses	Total square metres	Total value R'000	Number of dwelling-houses	Total square metres	Total value R'000	Number of dwelling-houses	Total square metres	Total value R'000
Limpopo	2021	4	89	685	83	5 375	32 958	638	209 131	1 297 370	725	214 595	1 331 013
	2022	2	58	359	61	4 038	26 211	627	177 048	1 195 596	690	181 144	1 222 166
	2023	0	0	0	32	1 937	12 995	381	137 838	963 567	413	139 775	976 562
South Africa	2021	153	4 411	31 404	12 460	619 980	3 734 498	16 219	4 413 262	34 259 190	28 832	5 037 653	38 025 092
	2022	41	1 102	7 638	10 097	524 168	3 660 226	16 279	4 568 579	36 961 424	26 417	5 093 849	40 629 288
	2023	20	486	3 898	7 357	361 063	2 573 215	12 307	3 635 724	30 294 545	19 684	3 997 273	32 871 658

**Table 4 – Number, square metres and value of building plans passed by municipalities for flats and townhouses by province**

Municipal reporting aggregated to provincial level by year		Flats			Townhouses			Building plans passed for flats and townhouses by municipalities		
		Number of units	Total square metres	Total value R'000	Number of units	Total square metres	Total value R'000	Number of units	Total square metres	Total value R'000
Western Cape	2021	5 378	403 646	3 145 947	2 320	408 702	3 142 033	7 698	812 348	6 287 980
	2022	6 748	498 059	4 127 229	1 654	352 217	2 857 333	8 402	850 276	6 984 562
	2023	4 242	362 026	3 180 300	1 875	322 867	2 699 188	6 117	684 893	5 879 488
Eastern Cape	2021	450	34 231	239 490	315	56 837	426 132	765	91 068	665 622
	2022	361	25 345	194 705	565	77 493	617 314	926	102 838	812 019
	2023	69	4 562	35 148	134	21 232	175 480	203	25 794	210 628
Northern Cape	2021	20	1 277	10 983	125	7 866	67 932	145	9 143	78 915
	2022	0	0	0	4	2 642	22 295	4	2 642	22 295
	2023	10	982	9 244	2	183	1 723	12	1 165	10 967
Free State	2021	58	3 020	24 095	110	20 655	181 043	168	23 675	205 138
	2022	31	1 784	16 270	217	27 737	263 668	248	29 521	279 938
	2023	55	3 549	27 784	121	36 447	342 275	176	39 996	370 059
KwaZulu-Natal	2021	3 978	348 681	3 839 721	608	111 996	1 011 152	4 586	460 677	4 850 873
	2022	3 139	259 280	3 104 311	1 128	224 325	1 963 342	4 267	483 605	5 067 653
	2023	715	70 190	839 677	459	85 094	777 639	1 174	155 284	1 617 316
North West	2021	421	25 451	149 818	292	35 100	231 173	713	60 551	380 991
	2022	345	17 869	106 387	52	7 760	56 312	397	25 629	162 699
	2023	138	12 586	75 445	128	16 403	107 514	266	28 989	182 959
Gauteng	2021	2 985	239 938	2 604 767	5 651	577 523	5 488 082	8 636	817 461	8 092 849
	2022	1 677	100 221	1 105 755	5 514	555 487	5 396 092	7 191	655 708	6 501 847
	2023	3 655	243 694	2 716 185	5 185	514 644	5 265 378	8 840	758 338	7 981 563
Mpumalanga	2021	180	16 292	100 954	27	3 431	18 991	207	19 723	119 945
	2022	64	5 815	50 826	39	7 786	53 561	103	13 601	104 387
	2023	165	13 180	83 209	36	2 668	20 489	201	15 848	103 698

**Table 4 – Number, square metres and value of building plans passed by municipalities for flats and townhouses by province (concluded)**

Municipal reporting aggregated to provincial level by year		Flats			Townhouses			Building plans passed for flats and townhouses by municipalities		
		Number of units	Total square metres	Total value R'000	Number of units	Total square metres	Total value R'000	Number of units	Total square metres	Total value R'000
Limpopo	2021	46	3 133	19 057	330	48 656	302 942	376	51 789	321 999
	2022	48	5 533	38 686	1 867	87 828	566 531	1 915	93 361	605 217
	2023	103	8 502	62 188	237	38 581	266 471	340	47 083	328 659
South Africa	2021	13 516	1 075 669	10 134 832	9 778	1 270 766	10 869 480	23 294	2 346 435	21 004 312
	2022	12 413	913 906	8 744 169	11 040	1 343 275	11 796 448	23 453	2 257 181	20 540 617
	2023	9 152	719 271	7 029 180	8 177	1 038 119	9 656 157	17 329	1 757 390	16 685 337

**Table 5 – Number, square metres and value of building plans passed by municipalities for other residential buildings by province**

Municipal reporting aggregated to provincial level by year		Other residential buildings								
		Tourism accommodation and casinos <sup>1</sup>			Other residential buildings excluding tourism accommodation <sup>2</sup>			Building plans passed for other residential buildings by municipalities		
		Number of buildings	Total square metres	Total value R'000	Number of buildings	Total square metres	Total value R'000	Number of buildings	Total square metres	Total value R'000
Western Cape	2021	5	41 432	311 824	23	69 196	524 940	28	110 628	836 764
	2022	8	20 774	182 836	77	16 219	118 235	85	36 993	301 071
	2023	9	9 697	72 468	24	10 977	82 605	33	20 674	155 073
Eastern Cape	2021	5	395	2 275	4	5 472	41 625	9	5 867	43 900
	2022	1	25 640	211 453	2	21 281	158 362	3	46 921	369 815
	2023	3	1 763	13 554	17	3 105	26 436	20	4 868	39 990
Northern Cape	2021	0	0	0	0	0	0	0	0	0
	2022	1	2 811	24 636	3	2 574	24 229	4	5 385	48 865
	2023	4	3 548	33 398	2	4 169	39 242	6	7 717	72 640
Free State	2021	3	1 577	13 508	24	3 269	22 054	27	4 846	35 562
	2022	1	1 197	8 884	5	3 038	19 019	6	4 235	27 903
	2023	0	0	0	6	6 996	56 186	6	6 996	56 186
KwaZulu-Natal	2021	9	8 257	75 987	13	6 380	43 513	22	14 637	119 500
	2022	2	2 650	44 165	5	13 597	125 310	7	16 247	169 475
	2023	8	7 050	70 985	2	5 628	61 908	10	12 678	132 893
North West	2021	0	0	0	1	1 373	9 300	1	1 373	9 300
	2022	3	14 247	83 347	4	1 023	7 229	7	15 270	90 576
	2023	4	4 581	32 976	2	194	1 278	6	4 775	34 254
Gauteng	2021	2	5 402	43 458	3	8 417	74 694	5	13 819	118 152
	2022	0	0	0	6	1 074	12 805	6	1 074	12 805
	2023	1	226	1 646	4	7 876	64 762	5	8 102	66 408
Mpumalanga	2021	1	13 657	78 651	0	0	0	1	13 657	78 651
	2022	7	4 895	28 830	1	2 350	21 016	8	7 245	49 846
	2023	4	3 753	28 869	3	16 583	134 852	7	20 336	163 721

<sup>1</sup> Hotels, motels, guest-houses, holiday chalets, bed-and-breakfast accommodation and casinos.

<sup>2</sup> Institutions for the disabled, boarding houses and hostels.



**Table 5 – Number, square metres and value of building plans passed by municipalities for other residential buildings by province (concluded)**

Municipal reporting aggregated to provincial level by year		Other residential buildings								
		Tourism accommodation and casinos <sup>1</sup>			Other residential buildings excluding tourism accommodation <sup>2</sup>			Building plans passed for other residential buildings by municipalities		
		Number of buildings	Total square metres	Total value R'000	Number of buildings	Total square metres	Total value R'000	Number of buildings	Total square metres	Total value R'000
Limpopo	2021	1	747	4 805	6	3 396	22 064	7	4 143	26 869
	2022	1	2 022	13 812	4	2 949	16 370	5	4 971	30 182
	2023	1	13 028	80 578	2	388	2 824	3	13 416	83 402
South Africa	2021	26	71 467	530 508	74	97 503	738 190	100	168 970	1 268 698
	2022	24	74 236	597 963	107	64 105	502 575	131	138 341	1 100 538
	2023	34	43 646	334 474	62	55 916	470 093	96	99 562	804 567

<sup>1</sup> Hotels, motels, guest-houses, holiday chalets, bed-and-breakfast accommodation and casinos.

<sup>2</sup> Institutions for the disabled, boarding houses and hostels.

**Table 6.1 – Number, square metres and value of non-residential building plans passed by municipalities by province: office and banking space, shopping space and industrial and warehouse space**

Municipal reporting aggregated to provincial level by year		Non-residential buildings								
		Office and banking space			Shopping space			Industrial and warehouse space		
		Number of buildings	Total square metres	Total value R'000	Number of buildings	Total square metres	Total value R'000	Number of buildings	Total square metres	Total value R'000
Western Cape	2021	35	58 759	430 115	42	80 621	608 544	128	265 386	1 802 581
	2022	49	59 051	448 116	55	77 599	597 634	159	310 767	2 113 635
	2023	38	68 079	587 897	58	69 369	562 904	159	376 705	2 706 893
Eastern Cape	2021	9	12 472	81 414	17	66 943	481 930	62	155 578	1 119 853
	2022	5	2 832	22 634	28	22 082	164 747	31	54 362	410 325
	2023	7	5 294	43 368	10	10 948	75 562	34	130 203	1 055 715
Northern Cape	2021	3	2 167	18 690	2	3 243	28 377	17	15 273	128 173
	2022	12	12 860	118 176	3	920	8 326	6	27 610	233 231
	2023	4	1 551	14 600	4	3 057	28 776	5	3 113	29 303
Free State	2021	1	1 047	9 379	11	13 473	101 444	14	11 518	72 761
	2022	4	2 220	13 970	9	6 565	45 219	22	34 666	235 082
	2023	3	2 404	20 788	13	32 815	208 406	25	40 659	367 118
KwaZulu-Natal	2021	14	26 636	245 701	34	41 578	406 983	105	580 964	3 564 808
	2022	24	19 863	195 914	43	139 043	1 388 689	99	416 427	2 615 735
	2023	15	21 781	205 846	28	161 867	1 665 932	79	286 311	1 863 483
North West	2021	5	1 547	9 237	31	143 209	890 565	12	18 316	116 042
	2022	9	7 608	55 402	45	63 535	398 328	13	50 754	306 166
	2023	7	22 789	143 731	36	28 281	190 569	38	30 117	190 355
Gauteng	2021	24	167 045	1 707 040	31	138 387	1 420 602	84	498 441	2 951 734
	2022	28	152 860	1 869 621	35	147 270	1 773 639	100	700 990	4 536 211
	2023	29	140 216	1 765 231	30	110 089	1 277 557	99	526 364	3 558 457
Mpumalanga	2021	3	1 246	9 438	14	12 623	80 801	25	36 345	238 960
	2022	9	4 706	30 758	16	43 484	279 200	75	124 166	870 207
	2023	16	18 112	146 714	22	103 033	877 256	52	77 757	553 043

**Table 6.1 – Number, square metres and value of non-residential building plans passed by municipalities by province: office and banking space, shopping space and industrial and warehouse space (concluded)**

Municipal reporting aggregated to provincial level by year		Non-residential buildings								
		Office and banking space			Shopping space			Industrial and warehouse space		
		Number of buildings	Total square metres	Total value R'000	Number of buildings	Total square metres	Total value R'000	Number of buildings	Total square metres	Total value R'000
Limpopo	2021	2	1 443	8 694	5	2 700	17 256	16	23 051	135 429
	2022	8	3 687	24 236	13	30 720	196 071	22	37 506	241 909
	2023	2	470	3 360	8	18 869	141 443	19	25 641	157 507
South Africa	2021	96	272 362	2 519 708	187	502 777	4 036 502	463	1 604 872	10 130 341
	2022	148	265 687	2 778 827	247	531 218	4 851 853	527	1 757 248	11 562 501
	2023	121	280 696	2 931 535	209	538 328	5 028 405	510	1 496 870	10 481 874

**Table 6.2 – Number, square metres and value of non-residential building plans passed by municipalities by province: schools, nursery schools, crèches, hospitals, churches, sport clubs, recreation clubs and all other non-residential space**

Municipal reporting aggregated to provincial level by year		Non-residential buildings											
		Schools, nursery schools, crèches and hospitals			Churches, sport and recreation clubs			All other non-residential space			Non-residential building plans passed by municipalities <sup>1</sup>		
		Number of buildings	Total square metres	Total value R'000	Number of buildings	Total square metres	Total value R'000	Number of buildings	Total square metres	Total value R'000	Number of buildings	Total square metres	Total value R'000
Western Cape	2021	24	48 565	330 651	35	33 045	226 878	165	66 865	459 769	429	553 241	3 858 538
	2022	26	36 716	258 489	22	31 410	229 219	193	126 155	948 908	504	641 698	4 596 001
	2023	26	50 853	443 860	20	20 550	170 884	284	60 115	404 913	585	645 671	4 877 351
Eastern Cape	2021	7	8 400	61 132	5	7 155	51 402	5	1 642	12 184	105	252 190	1 807 915
	2022	8	19 390	143 782	10	7 668	58 257	6	2 684	20 174	88	109 018	819 919
	2023	5	8 346	64 971	6	3 993	28 541	13	8 317	68 898	75	167 101	1 337 055
Northern Cape	2021	1	361	2 925	3	1 941	17 010	1	35	306	27	23 020	195 481
	2022	3	2 499	22 852	3	2 877	25 696	2	8 105	71 032	29	54 871	479 313
	2023	2	6 851	64 488	4	6 771	63 614	3	224	2 108	22	21 567	202 889
Free State	2021	4	14 780	90 670	6	9 014	50 942	3	659	5 235	39	50 491	330 431
	2022	3	12 786	83 077	0	0	0	2	2 288	19 883	40	58 525	397 231
	2023	3	1 461	11 382	1	691	5 509	0	0	0	45	78 030	613 203
KwaZulu-Natal	2021	15	20 076	168 548	11	10 752	76 506	5	1 241	12 995	184	681 247	4 475 541
	2022	14	11 482	91 711	8	7 995	67 953	4	1 449	15 474	192	596 259	4 375 476
	2023	5	4 146	31 693	16	15 067	106 141	3	1 281	14 706	146	490 453	3 887 801
North West	2021	7	7 761	44 885	7	8 400	56 276	16	6 279	38 470	78	185 512	1 155 475
	2022	9	8 420	59 030	5	3 562	20 512	18	30 826	206 556	99	164 705	1 045 994
	2023	2	2 345	14 816	6	8 189	62 846	7	1 737	10 750	96	93 458	613 067
Gauteng	2021	19	27 435	217 462	6	15 641	141 275	17	6 163	50 169	181	853 112	6 488 282
	2022	26	45 008	408 214	12	14 089	144 685	9	25 565	198 669	210	1 085 782	8 931 039
	2023	29	68 443	594 027	14	10 256	96 765	13	32 548	383 997	214	887 916	7 676 034
Mpumalanga	2021	4	2 088	12 621	3	2 343	12 763	3	1 374	8 024	52	56 019	362 607
	2022	7	11 313	67 765	10	7 666	46 931	4	8 269	52 012	121	199 604	1 346 873
	2023	9	20 616	178 167	12	10 661	76 800	6	2 762	17 760	117	232 941	1 849 740

<sup>1</sup> Office and banking space, shopping space, industrial and warehouse space, schools, nursery schools, crèches, hospitals, churches, sport clubs, recreation clubs and all other non-residential space (See Tables 6.1 and 6.2).

**Table 6.2 – Number, square metres and value of non-residential building plans passed by municipalities by province: schools, nursery schools, crèches, hospitals, churches, sport clubs, recreation clubs and all other non-residential space (concluded)**

Municipal reporting aggregated to provincial level by year		Non-residential buildings											
		Schools, nursery schools, crèches and hospitals			Churches, sport and recreation clubs			All other non-residential space			Non-residential building plans passed by municipalities <sup>1</sup>		
		Number of buildings	Total square metres	Total value R'000	Number of buildings	Total square metres	Total value R'000	Number of buildings	Total square metres	Total value R'000	Number of buildings	Total square metres	Total value R'000
Limpopo	2021	2	980	6 176	1	353	1 817	3	822	4 399	29	29 349	173 771
	2022	1	220	1 464	3	1 987	13 318	4	1 538	10 306	51	75 658	487 304
	2023	2	9 069	61 840	1	490	3 031	8	16 052	113 525	40	70 591	480 706
South Africa	2021	83	130 446	935 070	77	88 644	634 869	218	85 080	591 551	1 124	2 684 181	18 848 041
	2022	97	147 834	1 136 384	73	77 254	606 571	242	206 879	1 543 014	1 334	2 986 120	22 479 150
	2023	83	172 130	1 465 244	80	76 668	614 131	337	123 036	1 016 657	1 340	2 687 728	21 537 846

<sup>1</sup> Office and banking space, shopping space, industrial and warehouse space, schools, nursery schools, crèches, hospitals, churches, sport clubs, recreation clubs and all other non-residential space (See Tables 6.1 and 6.2).

**Table 7 – Number, square metres and value of building plans passed by municipalities for additions and alterations by province**

Municipal reporting aggregated to provincial level by year		Additions and alterations												
		Dwelling-houses			Other residential buildings			Non-residential buildings			Internal alterations	Building plans passed for additions and alterations by municipalities		
		Number of plans	Total square metres	Total value R'000	Number of plans	Total square metres	Total value R'000	Number of plans	Total square metres	Total value R'000	Total value R'000	Number of plans	Total square metres	Total value R'000
Western Cape	2021	11 362	867 735	5 932 744	983	70 433	541 678	608	202 512	1 580 555	803 291	12 953	1 140 680	8 858 268
	2022	11 227	1 067 617	7 683 405	1 064	68 496	543 278	776	248 952	2 086 692	1 137 017	13 067	1 385 065	11 450 392
	2023	8 477	886 767	6 712 450	797	110 972	922 387	493	200 340	1 662 642	656 298	9 767	1 198 079	9 953 777
Eastern Cape	2021	3 559	268 642	1 952 931	53	4 058	29 313	296	105 969	778 645	33 985	3 908	378 669	2 794 874
	2022	3 097	264 818	2 054 368	41	1 393	10 351	362	85 650	668 789	29 004	3 500	351 861	2 762 512
	2023	2 575	215 060	1 736 814	154	17 761	148 040	304	118 205	944 360	44 852	3 033	351 026	2 874 066
Northern Cape	2021	471	37 727	311 315	2	482	4 163	22	2 780	23 392	19 476	495	40 989	358 346
	2022	547	54 906	473 229	1	558	4 890	11	6 825	63 280	11 223	559	62 289	552 622
	2023	410	36 395	327 548	0	0	0	8	1 353	12 736	8 116	418	37 748	348 400
Free State	2021	1 074	92 172	679 132	7	245	1 943	37	15 591	112 411	13 555	1 118	108 008	807 041
	2022	866	72 683	589 640	6	200	1 488	14	3 398	25 928	30 680	886	76 281	647 736
	2023	863	78 869	651 879	11	1 358	12 499	58	13 070	110 411	24 789	932	93 297	799 578
KwaZulu-Natal	2021	3 543	364 622	3 703 202	202	14 144	151 024	337	140 796	1 375 495	188 241	4 082	519 562	5 417 962
	2022	3 498	334 595	3 512 305	187	24 261	256 347	344	161 354	1 639 849	255 525	4 029	520 210	5 664 026
	2023	2 679	266 001	2 710 467	197	23 458	260 917	312	134 550	1 383 579	291 884	3 188	424 009	4 646 847
North West	2021	1 521	138 493	878 470	22	4 555	26 584	62	24 661	158 371	110 515	1 605	167 709	1 173 940
	2022	1 172	108 561	715 761	10	1 865	11 680	51	26 165	173 533	99 537	1 233	136 591	1 000 511
	2023	1 014	88 768	602 815	4	2 215	15 908	39	11 703	81 304	70 028	1 057	102 686	770 055
Gauteng	2021	8 783	865 406	7 710 830	62	13 257	139 848	212	124 052	852 367	132 800	9 057	1 002 715	8 835 845
	2022	8 202	798 965	7 578 178	139	12 762	131 559	233	155 158	1 296 051	184 332	8 574	966 885	9 190 120
	2023	6 634	700 558	6 723 331	81	10 283	109 580	273	203 100	1 654 386	81 909	6 988	913 941	8 569 206
Mpumalanga	2021	2 218	159 494	993 740	2	201	1 095	37	7 927	47 605	60 327	2 257	167 622	1 102 767
	2022	2 135	185 559	1 240 018	5	1 113	6 472	85	27 482	189 165	75 643	2 225	214 154	1 511 298
	2023	1 622	152 696	1 047 325	21	1 562	11 277	72	25 447	170 864	59 991	1 715	179 705	1 289 457

**Table 7 – Number, square metres and value of building plans passed by municipalities for additions and alterations by province (concluded)**

Municipal reporting aggregated to provincial level by year		Additions and alterations												
		Dwelling-houses			Other residential buildings			Non-residential buildings			Internal alterations	Building plans passed for additions and alterations by municipalities		
		Number of plans	Total square metres	Total value R'000	Number of plans	Total square metres	Total value R'000	Number of plans	Total square metres	Total value R'000	Total value R'000	Number of plans	Total square metres	Total value R'000
Limpopo	2021	524	57 724	359 572	14	4 750	30 586	24	19 367	115 081	55 326	562	81 841	560 565
	2022	457	46 141	301 859	21	3 474	23 706	14	3 821	25 448	56 286	492	53 436	407 299
	2023	394	43 221	296 261	7	2 325	14 190	19	5 920	40 867	43 313	420	51 466	394 631
South Africa	2021	33 055	2 852 015	22 521 936	1 347	112 125	926 234	1 635	643 655	5 043 922	1 417 516	36 037	3 607 795	29 909 608
	2022	31 201	2 933 845	24 148 763	1 474	114 122	989 771	1 890	718 805	6 168 735	1 879 247	34 565	3 766 772	33 186 516
	2023	24 668	2 468 335	20 808 890	1 272	169 934	1 494 798	1 578	713 688	6 061 149	1 281 180	27 518	3 351 957	29 646 017

**Part 2**  
**Municipal reporting of buildings completed**  
**aggregated to provincial level**



**Table 8 – Number, square metres and value of residential, non-residential and additions and alterations reported as completed by province**

Municipal reporting aggregated to provincial level by year		Residential buildings		Non-residential buildings			Additions and alterations			Buildings reported as completed to municipalities	
		Total square metres	Total value R'000	Number of buildings	Total square metres	Total value R'000	Number of plans	Total square metres	Total value R'000	Total square metres	Total value R'000
Western Cape	2021	1 541 173	10 981 121	257	574 551	4 223 793	8 789	874 562	7 191 113	2 990 286	22 396 027
	2022	1 811 313	13 055 379	306	564 152	4 123 871	13 273	1 251 633	9 906 071	3 627 098	27 085 321
	2023	1 592 037	12 055 476	183	315 025	2 294 078	3 999	438 562	3 634 455	2 345 624	17 984 009
Eastern Cape	2021	163 710	1 213 225	33	150 939	1 083 229	1 399	120 033	918 108	434 682	3 214 562
	2022	169 408	1 343 392	34	80 781	630 293	1 082	125 670	1 013 039	375 859	2 986 724
	2023	249 186	2 025 562	36	59 469	446 834	1 159	134 814	1 133 093	443 469	3 605 489
Northern Cape	2021	34 272	288 503	12	6 867	57 201	333	36 729	310 727	77 868	656 431
	2022	22 350	194 245	12	24 776	205 927	433	41 627	367 168	88 753	767 340
	2023	14 767	138 646	6	5 979	56 130	212	22 076	213 747	42 822	408 523
Free State	2021	56 999	447 099	12	11 706	91 790	235	20 294	137 445	88 999	676 334
	2022	45 116	363 199	6	3 607	27 521	296	23 163	166 368	71 886	557 088
	2023	48 941	390 160	15	8 487	68 574	246	19 165	148 068	76 593	606 802
KwaZulu-Natal	2021	360 066	3 724 992	125	256 830	2 056 216	1 239	170 917	1 964 054	787 813	7 745 262
	2022	503 970	5 420 134	93	394 037	2 817 592	1 086	126 062	1 533 192	1 024 069	9 770 918
	2023	428 247	4 680 756	87	565 826	4 171 694	1 167	149 508	1 698 678	1 143 581	10 551 128
North West	2021	181 433	1 188 744	24	137 350	822 565	312	40 788	299 236	359 571	2 310 545
	2022	211 074	1 441 953	42	88 457	618 438	206	21 082	162 600	320 613	2 222 991
	2023	232 242	1 572 006	27	45 043	310 514	392	42 547	331 506	319 832	2 214 026
Gauteng	2021	1 539 522	13 578 793	110	602 787	4 400 870	1 948	295 502	2 434 415	2 437 811	20 414 078
	2022	1 485 659	13 756 499	114	799 143	5 900 973	1 847	283 429	2 516 764	2 568 231	22 174 236
	2023	1 326 922	12 950 749	109	572 534	5 323 600	1 680	218 177	2 105 304	2 117 633	20 379 653
Mpumalanga	2021	104 988	793 890	18	29 203	193 191	172	16 162	155 407	150 353	1 142 488
	2022	117 979	868 377	14	24 551	200 410	143	12 827	109 142	155 357	1 177 929
	2023	107 179	827 048	15	39 527	273 760	275	27 754	252 752	174 460	1 353 560

**Table 8 – Number, square metres and value of residential, non-residential and additions and alterations reported as completed by province (concluded)**

Municipal reporting aggregated to provincial level by year		Residential buildings		Non-residential buildings			Additions and alterations			Buildings reported as completed to municipalities	
		Total square metres	Total value R'000	Number of buildings	Total square metres	Total value R'000	Number of plans	Total square metres	Total value R'000	Total square metres	Total value R'000
Limpopo	2021	103 916	642 534	14	8 660	51 762	86	8 627	71 047	121 203	765 343
	2022	112 156	746 359	21	34 501	226 607	85	13 708	100 731	160 365	1 073 697
	2023	106 424	731 014	17	71 848	499 572	58	6 540	68 035	184 812	1 298 621
South Africa	2021	4 086 079	32 858 901	605	1 778 893	12 980 617	14 513	1 583 614	13 481 552	7 448 586	59 321 070
	2022	4 479 025	37 189 537	642	2 014 005	14 751 632	18 451	1 899 201	15 875 075	8 392 231	67 816 244
	2023	4 105 945	35 371 417	495	1 683 738	13 444 756	9 188	1 059 143	9 585 638	6 848 826	58 401 811

**Table 9 – Number, square metres and value of residential buildings reported as completed to municipalities: dwelling-houses, flats and townhouses and other residential buildings by province**

Municipal reporting aggregated to provincial level by year		Residential buildings										
		Dwelling-houses			Flats and townhouses			Other residential buildings and tourism accommodation <sup>1</sup>			Residential buildings reported as completed to municipalities	
		Number of dwelling-houses	Total square metres	Total value R'000	Number of units	Total square metres	Total value R'000	Number of buildings	Total square metres	Total value R'000	Total square metres	Total value R'000
Western Cape	2021	6 610	866 004	5 732 065	7 890	649 352	5 046 123	22	25 817	202 933	1 541 173	10 981 121
	2022	7 433	1 119 292	7 591 997	6 797	646 901	5 135 608	30	45 120	327 774	1 811 313	13 055 379
	2023	5 909	895 124	6 382 093	5 646	653 383	5 321 466	32	43 530	351 917	1 592 037	12 055 476
Eastern Cape	2021	667	134 614	997 772	281	29 070	215 253	1	26	200	163 710	1 213 225
	2022	906	144 052	1 145 559	221	20 059	157 157	1	5 297	40 676	169 408	1 343 392
	2023	1 200	212 076	1 720 366	411	37 006	304 538	2	104	658	249 186	2 025 562
Northern Cape	2021	167	31 493	264 732	17	1 662	13 982	1	1 117	9 789	34 272	288 503
	2022	100	20 779	181 515	20	1 571	12 730	0	0	0	22 350	194 245
	2023	69	14 701	138 025	1	66	621	0	0	0	14 767	138 646
Free State	2021	446	52 382	408 764	35	4 012	33 393	5	605	4 942	56 999	447 099
	2022	318	43 124	351 396	2	355	2 044	5	1 637	9 759	45 116	363 199
	2023	208	32 704	257 213	113	15 912	130 517	2	325	2 430	48 941	390 160
KwaZulu-Natal	2021	701	194 968	2 034 877	1 108	141 030	1 430 466	3	24 068	259 649	360 066	3 724 992
	2022	771	248 703	2 609 025	2 315	234 754	2 585 736	2	20 513	225 373	503 970	5 420 134
	2023	906	271 685	2 972 304	1 168	150 867	1 652 902	5	5 695	55 550	428 247	4 680 756
North West	2021	871	156 329	1 023 179	217	25 104	165 565	0	0	0	181 433	1 188 744
	2022	1 117	188 962	1 302 413	194	20 069	126 036	10	2 043	13 504	211 074	1 441 953
	2023	1 308	196 925	1 340 720	267	30 062	198 031	8	5 255	33 255	232 242	1 572 006
Gauteng	2021	6 682	940 682	7 925 665	5 785	597 429	5 639 712	3	1 411	13 416	1 539 522	13 578 793
	2022	7 789	1 041 201	9 412 417	4 082	441 192	4 316 127	2	3 266	27 955	1 485 659	13 756 499
	2023	6 396	898 377	8 557 106	4 616	426 728	4 373 053	2	1 817	20 590	1 326 922	12 950 749
Mpumalanga	2021	526	94 125	708 280	34	2 858	18 952	1	8 005	66 658	104 988	793 890
	2022	706	117 470	865 411	4	509	2 966	0	0	0	117 979	868 377
	2023	522	90 628	701 983	164	16 551	125 065	0	0	0	107 179	827 048

<sup>1</sup> Institutions for the disabled, boarding houses, hostels and tourism accommodation e.g. hotels, motels, guest-houses, holiday chalets, bed-and-breakfast accommodation and casinos.

**Table 9 – Number, square metres and value of residential buildings reported as completed to municipalities: dwelling-houses, flats and townhouses and other residential buildings by province (concluded)**

Municipal reporting aggregated to provincial level by year		Residential buildings										
		Dwelling-houses			Flats and townhouses			Other residential buildings and tourism accommodation <sup>1</sup>			Residential buildings reported as completed to municipalities	
		Number of dwelling-houses	Total square metres	Total value R'000	Number of units	Total square metres	Total value R'000	Number of buildings	Total square metres	Total value R'000	Total square metres	Total value R'000
Limpopo	2021	406	88 631	546 868	154	15 145	94 766	1	140	900	103 916	642 534
	2022	399	98 663	655 260	118	13 278	89 630	1	215	1 469	112 156	746 359
	2023	300	80 027	548 399	330	25 580	176 621	3	817	5 994	106 424	731 014
South Africa	2021	17 076	2 559 228	19 642 202	15 521	1 465 662	12 658 212	37	61 189	558 487	4 086 079	32 858 901
	2022	19 539	3 022 246	24 114 993	13 753	1 378 688	12 428 034	51	78 091	646 510	4 479 025	37 189 537
	2023	16 818	2 692 247	22 618 209	12 716	1 356 155	12 282 814	54	57 543	470 394	4 105 945	35 371 417

<sup>1</sup> Institutions for the disabled, boarding houses, hostels and tourism accommodation e.g. hotels, motels, guest-houses, holiday chalets, bed-and-breakfast accommodation and casinos.

**Table 10 – Number, square metres and value of dwelling-houses reported as completed to municipalities by size of dwelling-house by province**

Municipal reporting aggregated to provincial level by year		Size of dwelling-house									Dwelling-houses reported as completed to municipalities		
		Equal to or smaller than 30 square metres			Larger than 30 square metres and smaller than 80 square metres			Equal to or larger than 80 square metres					
		Number of dwelling-houses	Total square metres	Total value R'000	Number of dwelling-houses	Total square metres	Total value R'000	Number of dwelling-houses	Total square metres	Total value R'000	Number of dwelling-houses	Total square metres	Total value R'000
Western Cape	2021	8	210	1 151	3 657	164 352	936 349	2 945	701 442	4 794 565	6 610	866 004	5 732 065
	2022	13	321	1 851	3 411	149 664	866 149	4 009	969 307	6 723 997	7 433	1 119 292	7 591 997
	2023	5	129	922	2 736	123 636	812 531	3 168	771 359	5 568 640	5 909	895 124	6 382 093
Eastern Cape	2021	0	0	0	167	9 312	62 422	500	125 302	935 350	667	134 614	997 772
	2022	0	0	0	339	20 124	147 007	567	123 928	998 552	906	144 052	1 145 559
	2023	1	23	126	546	27 130	203 357	653	184 923	1 516 883	1 200	212 076	1 720 366
Northern Cape	2021	0	0	0	37	2 449	21 265	130	29 044	243 467	167	31 493	264 732
	2022	0	0	0	16	1 059	9 310	84	19 720	172 205	100	20 779	181 515
	2023	0	0	0	9	519	4 577	60	14 182	133 448	69	14 701	138 025
Free State	2021	0	0	0	241	14 579	123 155	205	37 803	285 609	446	52 382	408 764
	2022	0	0	0	147	7 977	72 843	171	35 147	278 553	318	43 124	351 396
	2023	0	0	0	65	3 768	34 741	143	28 936	222 472	208	32 704	257 213
KwaZulu-Natal	2021	1	30	126	85	4 966	48 850	615	189 972	1 985 901	701	194 968	2 034 877
	2022	1	30	357	104	5 861	55 368	666	242 812	2 553 300	771	248 703	2 609 025
	2023	0	0	0	86	5 095	47 330	820	266 590	2 924 974	906	271 685	2 972 304
North West	2021	2	49	321	230	13 869	81 620	639	142 411	941 238	871	156 329	1 023 179
	2022	3	60	412	304	18 083	103 386	810	170 819	1 198 615	1 117	188 962	1 302 413
	2023	2	50	348	538	28 006	154 990	768	168 869	1 185 382	1 308	196 925	1 340 720
Gauteng	2021	0	0	0	3 946	215 865	1 511 149	2 736	724 817	6 414 516	6 682	940 682	7 925 665
	2022	0	0	0	4 915	277 088	2 096 208	2 874	764 113	7 316 209	7 789	1 041 201	9 412 417
	2023	0	0	0	3 756	199 517	1 531 272	2 640	698 860	7 025 834	6 396	898 377	8 557 106
Mpumalanga	2021	0	0	0	164	9 181	58 086	362	84 944	650 194	526	94 125	708 280
	2022	9	172	1 013	175	10 242	69 523	522	107 056	794 875	706	117 470	865 411
	2023	0	0	0	132	8 059	56 956	390	82 569	645 027	522	90 628	701 983

**Table 10 – Number, square metres and value of dwelling-houses reported as completed to municipalities by size of dwelling-house by province (concluded)**

Municipal reporting aggregated to provincial level by year		Size of dwelling-house									Dwelling-houses reported as completed to municipalities		
		Equal to or smaller than 30 square metres			Larger than 30 square metres and smaller than 80 square metres			Equal to or larger than 80 square metres					
		Number of dwelling-houses	Total square metres	Total value R'000	Number of dwelling-houses	Total square metres	Total value R'000	Number of dwelling-houses	Total square metres	Total value R'000	Number of dwelling-houses	Total square metres	Total value R'000
Limpopo	2021	0	0	0	123	7 514	47 129	283	81 117	499 739	406	88 631	546 868
	2022	0	0	0	100	6 488	42 949	299	92 175	612 311	399	98 663	655 260
	2023	0	0	0	36	2 341	16 033	264	77 686	532 366	300	80 027	548 399
South Africa	2021	11	289	1 598	8 650	442 087	2 890 025	8 415	2 116 852	16 750 579	17 076	2 559 228	19 642 202
	2022	26	583	3 633	9 511	496 586	3 462 743	10 002	2 525 077	20 648 617	19 539	3 022 246	24 114 993
	2023	8	202	1 396	7 904	398 071	2 861 787	8 906	2 293 974	19 755 026	16 818	2 692 247	22 618 209

**Table 11 – Number, square metres and value of flats and townhouses reported as completed to municipalities by province**

Municipal reporting aggregated to provincial level by year		Flats			Townhouses			Flats and townhouses reported as completed to municipalities		
		Number of units	Total square metres	Total value R'000	Number of units	Total square metres	Total value R'000	Number of units	Total square metres	Total value R'000
Western Cape	2021	6 519	450 085	3 499 947	1 371	199 267	1 546 176	7 890	649 352	5 046 123
	2022	5 382	424 429	3 356 842	1 415	222 472	1 778 766	6 797	646 901	5 135 608
	2023	4 726	442 888	3 585 129	920	210 495	1 736 337	5 646	653 383	5 321 466
Eastern Cape	2021	92	4 814	33 941	189	24 256	181 312	281	29 070	215 253
	2022	119	6 233	47 008	102	13 826	110 149	221	20 059	157 157
	2023	277	18 340	150 597	134	18 666	153 941	411	37 006	304 538
Northern Cape	2021	0	0	0	17	1 662	13 982	17	1 662	13 982
	2022	18	1 311	10 623	2	260	2 107	20	1 571	12 730
	2023	0	0	0	1	66	621	1	66	621
Free State	2021	33	3 640	30 703	2	372	2 690	35	4 012	33 393
	2022	0	0	0	2	355	2 044	2	355	2 044
	2023	43	2 587	20 626	70	13 325	109 891	113	15 912	130 517
KwaZulu-Natal	2021	715	82 450	929 006	393	58 580	501 460	1 108	141 030	1 430 466
	2022	1 992	181 561	2 100 896	323	53 193	484 840	2 315	234 754	2 585 736
	2023	859	92 924	1 087 878	309	57 943	565 024	1 168	150 867	1 652 902
North West	2021	145	13 012	83 812	72	12 092	81 753	217	25 104	165 565
	2022	118	9 242	55 926	76	10 827	70 110	194	20 069	126 036
	2023	189	21 381	141 293	78	8 681	56 738	267	30 062	198 031
Gauteng	2021	1 207	91 221	1 058 996	4 578	506 208	4 580 716	5 785	597 429	5 639 712
	2022	911	60 835	656 404	3 171	380 357	3 659 723	4 082	441 192	4 316 127
	2023	1 646	122 054	1 291 474	2 970	304 674	3 081 579	4 616	426 728	4 373 053
Mpumalanga	2021	8	317	2 640	26	2 541	16 312	34	2 858	18 952
	2022	0	0	0	4	509	2 966	4	509	2 966
	2023	138	14 240	104 697	26	2 311	20 368	164	16 551	125 065

**Table 11 – Number, square metres and value of flats and townhouses reported as completed to municipalities by province (concluded)**

Municipal reporting aggregated to provincial level by year		Flats			Townhouses			Flats and townhouses reported as completed to municipalities		
		Number of units	Total square metres	Total value R'000	Number of units	Total square metres	Total value R'000	Number of units	Total square metres	Total value R'000
Limpopo	2021	0	0	0	154	15 145	94 766	154	15 145	94 766
	2022	48	4 032	28 128	70	9 246	61 502	118	13 278	89 630
	2023	150	7 459	51 266	180	18 121	125 355	330	25 580	176 621
South Africa	2021	8 719	645 539	5 639 045	6 802	820 123	7 019 167	15 521	1 465 662	12 658 212
	2022	8 588	687 643	6 255 827	5 165	691 045	6 172 207	13 753	1 378 688	12 428 034
	2023	8 028	721 873	6 432 960	4 688	634 282	5 849 854	12 716	1 356 155	12 282 814



**Table 12 – Number, square metres and value of other residential buildings reported as completed to municipalities by province**

Municipal reporting aggregated to provincial level by year		Other residential buildings								
		Tourism accommodation and casinos <sup>1</sup>			Other residential buildings excluding tourism accommodation <sup>2</sup>			Other residential buildings reported as completed to municipalities		
		Number of buildings	Total square metres	Total value R'000	Number of buildings	Total square metres	Total value R'000	Number of buildings	Total square metres	Total value R'000
Western Cape	2021	4	3 737	25 576	18	22 080	177 357	22	25 817	202 933
	2022	1	2 069	13 449	29	43 051	314 325	30	45 120	327 774
	2023	2	16 252	141 895	30	27 278	210 022	32	43 530	351 917
Eastern Cape	2021	0	0	0	1	26	200	1	26	200
	2022	0	0	0	1	5 297	40 676	1	5 297	40 676
	2023	0	0	0	2	104	658	2	104	658
Northern Cape	2021	1	1 117	9 789	0	0	0	1	1 117	9 789
	2022	0	0	0	0	0	0	0	0	0
	2023	0	0	0	0	0	0	0	0	0
Free State	2021	0	0	0	5	605	4 942	5	605	4 942
	2022	0	0	0	5	1 637	9 759	5	1 637	9 759
	2023	1	204	1 682	1	121	748	2	325	2 430
KwaZulu-Natal	2021	2	23 862	258 147	1	206	1 502	3	24 068	259 649
	2022	2	20 513	225 373	0	0	0	2	20 513	225 373
	2023	5	5 695	55 550	0	0	0	5	5 695	55 550
North West	2021	0	0	0	0	0	0	0	0	0
	2022	0	0	0	10	2 043	13 504	10	2 043	13 504
	2023	6	4 495	28 135	2	760	5 120	8	5 255	33 255
Gauteng	2021	0	0	0	3	1 411	13 416	3	1 411	13 416
	2022	0	0	0	2	3 266	27 955	2	3 266	27 955
	2023	2	1 817	20 590	0	0	0	2	1 817	20 590
Mpumalanga	2021	0	0	0	1	8 005	66 658	1	8 005	66 658
	2022	0	0	0	0	0	0	0	0	0
	2023	0	0	0	0	0	0	0	0	0

<sup>1</sup> Hotels, motels, guest-houses, chalets, bed-and-breakfast accommodation and casinos.<sup>2</sup> Institutions for the disabled, boarding houses and hostels.

**Table 12 – Number, square metres and value of other residential buildings reported as completed to municipalities by province (concluded)**

Municipal reporting aggregated to provincial level by year		Other residential buildings								
		Tourism accommodation and casinos <sup>1</sup>			Other residential buildings excluding tourism accommodation <sup>2</sup>			Other residential buildings reported as completed to municipalities		
		Number of buildings	Total square metres	Total value R'000	Number of buildings	Total square metres	Total value R'000	Number of buildings	Total square metres	Total value R'000
Limpopo	2021	0	0	0	1	140	900	1	140	900
	2022	0	0	0	1	215	1 469	1	215	1 469
	2023	1	267	1 958	2	550	4 036	3	817	5 994
South Africa	2021	7	28 716	293 512	30	32 473	264 975	37	61 189	558 487
	2022	3	22 582	238 822	48	55 509	407 688	51	78 091	646 510
	2023	17	28 730	249 810	37	28 813	220 584	54	57 543	470 394

<sup>1</sup> Hotels, motels, guest-houses, chalets, bed-and-breakfast accommodation and casinos.

<sup>2</sup> Institutions for the disabled, boarding houses and hostels.

**Table 13.1 – Number, square metres and value of non-residential buildings reported as completed to municipalities by province: office and banking space, shopping space and industrial and warehouse space**

Municipal reporting aggregated to provincial level by year		Non-residential buildings								
		Office and banking space			Shopping space			Industrial and warehouse space		
		Number of buildings	Total square metres	Total value R'000	Number of buildings	Total square metres	Total value R'000	Number of buildings	Total square metres	Total value R'000
Western Cape	2021	25	101 600	824 807	42	109 695	895 455	98	305 719	2 111 329
	2022	43	68 472	545 622	38	95 637	780 994	95	252 461	1 702 065
	2023	16	19 883	156 909	31	43 564	346 941	71	201 505	1 439 871
Eastern Cape	2021	5	12 747	89 972	4	3 605	23 466	16	115 471	827 859
	2022	1	3 921	30 109	7	29 013	237 538	14	12 111	93 300
	2023	5	4 624	36 635	7	5 027	40 123	16	29 626	227 555
Northern Cape	2021	4	1 040	8 562	2	1 190	10 429	3	4 188	34 475
	2022	3	1 466	13 195	1	249	2 344	6	22 619	186 492
	2023	2	1 387	13 056	2	3 532	33 097	1	473	4 452
Free State	2021	1	147	1 091	2	538	3 640	6	6 315	46 469
	2022	1	261	2 081	1	207	1 992	2	2 786	21 319
	2023	3	696	5 074	2	1 421	11 635	10	6 370	51 865
KwaZulu-Natal	2021	11	27 611	286 860	46	111 176	1 028 371	60	111 282	692 660
	2022	6	10 858	116 522	19	58 740	621 833	53	301 253	1 845 370
	2023	6	21 232	219 776	20	116 415	1 253 485	38	401 873	2 408 937
North West	2021	3	7 339	42 368	13	119 727	709 928	7	9 764	66 276
	2022	3	1 309	7 688	14	49 168	366 820	15	19 617	133 706
	2023	3	5 534	44 080	12	23 415	144 651	9	14 847	114 070
Gauteng	2021	9	30 407	374 815	19	115 114	1 158 117	55	379 629	2 191 974
	2022	14	40 386	411 461	18	126 940	1 439 571	63	587 462	3 658 606
	2023	14	128 383	1 601 309	19	124 410	1 468 363	52	297 588	2 029 080
Mpumalanga	2021	7	6 989	55 890	3	7 840	51 456	7	10 410	62 457
	2022	2	1 455	8 570	0	0	0	10	14 497	120 236
	2023	3	6 233	55 592	5	10 121	66 134	6	22 918	149 752

**Table 13.1 – Number, square metres and value of non-residential buildings reported as completed to municipalities by province: office and banking space, shopping space and industrial and warehouse space (concluded)**

Municipal reporting aggregated to provincial level by year		Non-residential buildings								
		Office and banking space			Shopping space			Industrial and warehouse space		
		Number of buildings	Total square metres	Total value R'000	Number of buildings	Total square metres	Total value R'000	Number of buildings	Total square metres	Total value R'000
Limpopo	2021	3	1 029	6 223	2	2 580	14 078	5	2 181	13 734
	2022	0	0	0	6	10 971	72 254	11	19 349	125 963
	2023	3	1 212	8 434	4	25 054	172 009	10	45 582	319 129
South Africa	2021	68	188 909	1 690 588	133	471 465	3 894 940	257	944 959	6 047 233
	2022	73	128 128	1 135 248	104	370 925	3 523 346	269	1 232 155	7 887 057
	2023	55	189 184	2 140 865	102	352 959	3 536 438	213	1 020 782	6 744 711

**Table 13.2 – Number, square metres and value of non-residential buildings reported as completed to municipalities by province: schools, nursery schools, crèches, hospitals, churches, sport clubs, recreation clubs and all other non-residential space**

Municipal reporting aggregated to provincial level by year		Non-residential buildings									Non-residential buildings reported as completed to municipalities <sup>1</sup>		
		Schools, nursery schools, crèches and hospitals			Churches, sport and recreation clubs			All other non-residential space					
		Number of buildings	Total square metres	Total value R'000	Number of buildings	Total square metres	Total value R'000	Number of buildings	Total square metres	Total value R'000	Number of buildings	Total square metres	Total value R'000
Western Cape	2021	19	26 911	189 830	11	12 156	84 166	62	18 470	118 206	257	574 551	4 223 793
	2022	20	38 746	273 534	24	17 839	117 550	86	90 997	704 106	306	564 152	4 123 871
	2023	9	24 553	176 406	4	2 413	17 782	52	23 107	156 169	183	315 025	2 294 078
Eastern Cape	2021	4	17 160	127 844	3	1 921	13 843	1	35	245	33	150 939	1 083 229
	2022	7	33 513	253 091	3	1 195	7 968	2	1 028	8 287	34	80 781	630 293
	2023	3	15 355	103 489	1	158	1 260	4	4 679	37 772	36	59 469	446 834
Northern Cape	2021	0	0	0	3	449	3 735	0	0	0	12	6 867	57 201
	2022	0	0	0	1	202	1 637	1	240	2 259	12	24 776	205 927
	2023	0	0	0	1	587	5 525	0	0	0	6	5 979	56 130
Free State	2021	1	4 235	37 937	1	408	2 213	1	63	440	12	11 706	91 790
	2022	0	0	0	2	353	2 129	0	0	0	6	3 607	27 521
	2023	0	0	0	0	0	0	0	0	0	15	8 487	68 574
KwaZulu-Natal	2021	5	3 429	27 107	3	3 332	21 218	0	0	0	125	256 830	2 056 216
	2022	7	18 991	191 008	7	4 145	42 609	1	50	250	93	394 037	2 817 592
	2023	6	6 417	69 331	12	8 405	93 722	5	11 484	126 443	87	565 826	4 171 694
North West	2021	0	0	0	1	520	3 993	0	0	0	24	137 350	822 565
	2022	5	14 991	87 789	2	1 147	6 880	3	2 225	15 555	42	88 457	618 438
	2023	0	0	0	3	1 247	7 713	0	0	0	27	45 043	310 514
Gauteng	2021	14	53 158	505 112	7	16 418	101 889	6	8 061	68 963	110	602 787	4 400 870
	2022	10	39 874	354 049	3	1 282	12 432	6	3 199	24 854	114	799 143	5 900 973
	2023	18	12 331	113 078	3	8 158	99 305	3	1 664	12 465	109	572 534	5 323 600
Mpumalanga	2021	0	0	0	1	3 964	23 388	0	0	0	18	29 203	193 191
	2022	2	8 599	71 604	0	0	0	0	0	0	14	24 551	200 410
	2023	0	0	0	1	255	2 282	0	0	0	15	39 527	273 760

<sup>1</sup> Office and banking space, shopping space, industrial and warehouse space, schools, nursery schools, crèches, hospitals, churches, sport clubs, recreation clubs and all other non-residential space (See Tables 13.1 and 13.2).

**Table 13.2 – Number, square metres and value of non-residential buildings reported as completed to municipalities by province: schools, nursery schools, crèches, hospitals, churches, sport clubs, recreation clubs and all other non-residential space (concluded)**

Municipal reporting aggregated to provincial level by year		Non-residential buildings									Non-residential buildings reported as completed to municipalities <sup>1</sup>		
		Schools, nursery schools, crèches and hospitals			Churches, sport and recreation clubs			All other non-residential space					
		Number of buildings	Total square metres	Total value R'000	Number of buildings	Total square metres	Total value R'000	Number of buildings	Total square metres	Total value R'000	Number of buildings	Total square metres	Total value R'000
Limpopo	2021	0	0	0	1	1 752	11 269	3	1 118	6 458	14	8 660	51 762
	2022	2	2 167	15 490	0	0	0	2	2 014	12 900	21	34 501	226 607
	2023	0	0	0	0	0	0	0	0	0	17	71 848	499 572
South Africa	2021	43	104 893	887 830	31	40 920	265 714	73	27 747	194 312	605	1 778 893	12 980 617
	2022	53	156 881	1 246 565	42	26 163	191 205	101	99 753	768 211	642	2 014 005	14 751 632
	2023	36	58 656	462 304	25	21 223	227 589	64	40 934	332 849	495	1 683 738	13 444 756

<sup>1</sup> Office and banking space, shopping space, industrial and warehouse space, schools, nursery schools, crèches, hospitals, churches, sport clubs, recreation clubs and all other non-residential space (See Tables 13.1 and 13.2).

**Table 14 – Number, square metres and value of additions and alterations reported as completed to municipalities by province**

Municipal reporting aggregated to provincial level by year		Additions and alterations												
		Dwelling-houses			Other residential buildings			Non-residential buildings			Internal alterations	Additions and alterations reported as completed to municipalities		
		Number of plans	Total square metres	Total value R'000	Number of plans	Total square metres	Total value R'000	Number of plans	Total square metres	Total value R'000	Total value R'000	Number of plans	Total square metres	Total value R'000
Western Cape	2021	7 423	545 621	3 590 447	683	43 143	345 496	683	285 798	2 040 232	1 214 938	8 789	874 562	7 191 113
	2022	11 843	902 634	6 071 084	736	69 394	564 407	694	279 605	2 237 601	1 032 979	13 273	1 251 633	9 906 071
	2023	3 405	259 136	1 870 630	316	40 799	340 016	278	138 627	1 085 944	337 865	3 999	438 562	3 634 455
Eastern Cape	2021	1 266	92 071	670 050	31	6 897	50 919	102	21 065	155 659	41 480	1 399	120 033	918 108
	2022	965	75 750	597 204	17	4 443	35 340	100	45 477	360 928	19 567	1 082	125 670	1 013 039
	2023	984	75 082	611 571	34	8 049	68 120	141	51 683	417 219	36 183	1 159	134 814	1 133 093
Northern Cape	2021	320	27 619	230 879	0	0	0	13	9 110	77 170	2 678	333	36 729	310 727
	2022	423	37 482	326 050	0	0	0	10	4 145	36 200	4 918	433	41 627	367 168
	2023	203	18 343	172 528	0	0	0	9	3 733	35 139	6 080	212	22 076	213 747
Free State	2021	227	19 594	130 755	2	69	421	6	631	4 174	2 095	235	20 294	137 445
	2022	281	19 067	131 348	0	0	0	15	4 096	31 462	3 558	296	23 163	166 368
	2023	239	17 459	132 509	0	0	0	7	1 706	14 070	1 489	246	19 165	148 068
KwaZulu-Natal	2021	1 085	102 590	1 164 792	54	13 838	149 207	100	54 489	581 616	68 439	1 239	170 917	1 964 054
	2022	938	80 993	918 587	54	9 727	106 854	94	35 342	384 686	123 065	1 086	126 062	1 533 192
	2023	1 036	86 559	973 808	50	6 673	70 978	81	56 276	614 291	39 601	1 167	149 508	1 698 678
North West	2021	293	24 015	147 471	4	598	3 455	15	16 175	100 948	47 362	312	40 788	299 236
	2022	188	15 951	97 902	3	640	3 685	15	4 491	30 231	30 782	206	21 082	162 600
	2023	371	36 209	227 579	3	549	3 630	18	5 789	37 937	62 360	392	42 547	331 506
Gauteng	2021	1 815	201 872	1 717 021	54	3 251	31 379	79	90 379	658 871	27 144	1 948	295 502	2 434 415
	2022	1 727	197 962	1 823 646	32	5 263	47 189	88	80 204	607 257	38 672	1 847	283 429	2 516 764
	2023	1 532	170 203	1 654 610	66	4 008	43 384	82	43 966	376 603	30 707	1 680	218 177	2 105 304
Mpumalanga	2021	166	13 901	97 265	0	0	0	6	2 261	13 067	45 075	172	16 162	155 407
	2022	142	11 021	78 818	0	0	0	1	1 806	10 634	19 690	143	12 827	109 142
	2023	265	20 548	150 749	1	3 393	30 537	9	3 813	28 996	42 470	275	27 754	252 752

**Table 14 – Number, square metres and value of additions and alterations reported as completed to municipalities by province (concluded)**

Municipal reporting aggregated to provincial level by year		Additions and alterations												
		Dwelling-houses			Other residential buildings			Non-residential buildings			Internal alterations	Additions and alterations reported as completed to municipalities		
		Number of plans	Total square metres	Total value R'000	Number of plans	Total square metres	Total value R'000	Number of plans	Total square metres	Total value R'000	Total value R'000	Number of plans	Total square metres	Total value R'000
Limpopo	2021	62	6 282	37 605	20	1 676	10 158	4	669	4 283	19 001	86	8 627	71 047
	2022	61	6 857	43 720	18	3 373	22 921	6	3 478	23 403	10 687	85	13 708	100 731
	2023	49	4 900	33 141	7	451	3 100	2	1 189	8 172	23 622	58	6 540	68 035
South Africa	2021	12 657	1 033 565	7 786 285	848	69 472	591 035	1 008	480 577	3 636 020	1 468 212	14 513	1 583 614	13 481 552
	2022	16 568	1 347 717	10 088 359	860	92 840	780 396	1 023	458 644	3 722 402	1 283 918	18 451	1 899 201	15 875 075
	2023	8 084	688 439	5 827 125	477	63 922	559 765	627	306 782	2 618 371	580 377	9 188	1 059 143	9 585 638



## Municipalities covered in the monthly survey

**Table 15 – Municipalities covered in the monthly survey: Western Cape**

Municipality	Main towns within municipal boundaries	District municipality
Bitou	Plettenberg Bay	Eden
Breede Valley	De Doorns, Rawsonville, Touws River, Worcester	Cape Winelands
City of Cape Town	Bellville, Blue Downs, Brackenfell, Cape Town City Centre, Durbanville, Eersterivier, Fish Hoek, Goodwood, Gordon's Bay, Gugulethu, Khayelitsha, Kraaifontein, Kuilsrivier, Langa, Mfuleni, Milnerton, Mitchells Plain, Nyanga, Parow, Plumstead, Simon's Town, Somerset West, Strand	City of Cape Town
Drakenstein	Blouvllei, Hermon, Paarl, Soetendal, Wellington	Cape Winelands
George	George, Herolds Bay, Pacaltsdorp, Wilderness	Eden
Knysna	Knysna, Sedgefield	Eden
Mossel Bay	Groot Brakrivier, Herbertsdale, Klein Brakrivier, Mossel Bay	Eden
Oudtshoorn	De Rust, Dysselsdorp, Oudtshoorn	Eden
Overstrand	Betty's Bay, Fisherhaven, Gansbaai, Hangklip, Hawston, Hermanus, Kleinmond, Onrus, Rooiels Bay, Stanford, Vermont	Overberg
Saldanha Bay	Hopefield, Langebaan, Saldanha, Vredenburg	West Coast
Stellenbosch	Franschhoek, Pniel, Stellenbosch	Cape Winelands
Swartland	Darling, Koringberg, Malmesbury, Moorreesburg, Yzerfontein	West Coast

**Table 16 – Municipalities covered in the monthly survey: Eastern Cape**

<b>Municipality</b>	<b>Main towns within municipal boundaries</b>	<b>District municipality</b>
Buffalo City	Beacon Bay, Bisho, East London, Gonubie, Qonce, Mdantsane, Zwelitsha	Buffalo City
King Sabata Dalindyebo	Mqanduli, Mthatha	O R Tambo
Kouga	Cape St Francis, Hankey, Humansdorp, Jeffreys Bay, Oyster Bay, Patensie, St Francis Bay	Sarah Baartman
Makana	Alicedale, Makhanda, Riebeeck East	Sarah Baartman
Ndlambe	Alexandria, Bathurst, Kenton-on-Sea, Port Alfred	Sarah Baartman
Nelson Mandela	Despatch, Gqeberha, Uitenhage	Nelson Mandela Bay
Walter Sisulu	Aliwal North, Jamestown	Joe Gqabi

**Table 17 – Municipalities covered in the monthly survey: Northern Cape**

<b>Municipality</b>	<b>Main towns within municipal boundaries</b>	<b>District municipality</b>
Dawid Kruiper	Dagbreek, Gelukspruit, Karos, Louisvale, Sprigg, Upington	Z F Mgcawu
Ga-Segonyana	Bekker, Ga-Mopedi, Gathlose, Kuruman, Mothibistad, Seoding	John Taolo
Kai !Garib	Kakamas, Keimoes, Kenhardt	Z F Mgcawu
Sol Plaatje	Kenilworth, Kimberley, Modderrivier, Ritchie, Riverton, Spytfontein	Frances Baard

**Table 18 – Municipalities covered in the monthly survey: Free State**

<b>Municipality</b>	<b>Main towns within municipal boundaries</b>	<b>District municipality</b>
Dihlabeng	Bethlehem, Bohlokong, Clarens, Fouriesburg, Paul Roux, Rosendal	Thabo Mofutsanyana
Maluti-a-Phofung	Harrismith, Kestell, Phuthaditjhaba	Thabo Mofutsanyana
Mangaung	Bloemfontein, Botshabelo, Thaba Nchu	Mangaung
Mantsopa	Excelsior, Hobhouse, Ladybrand, Manyatseng, Thaba Phatshoa, Tweespruit	Thabo Mofutsanyana
Matjhabeng	Allanridge, Hennenman, Kutlwanong, Meloding, Odendaalsrus, Thabong, Ventersburg, Virginia, Welkom	Lejweleputswa
Metsimaholo	Deneysville, Oranjeville, Sasolburg	Fezile Dabi
Moqhaka	Kroonstad, Maokeng, Steynsrus, Viljoenskroon	Fezile Dabi
Ngwathe	Edenville, Heilbron, Koppies, Parys, Vredefort	Fezile Dabi

**Table 19 – Municipalities covered in the monthly survey: KwaZulu-Natal**

<b>Municipality</b>	<b>Main towns within municipal boundaries</b>	<b>District municipality</b>
Alfred Duma	Colenso, Ekuvukeni, Etholeni, Ingwe, Kliprivier, Ladysmith, Limehill, Mabaso, Rockcliff, Sams Hoek	uThukela
City of uMhlathuze	Empangeni, Richards Bay	King Cetshwayo
eThekweni	Amanzimtoti, Botha's Hill, Cato Ridge, Clermont, Drummond, Durban, Hillcrest, Inchanga, Kingsburgh, Kloof, KwaDabeka, KwaMakhutha, KwaMashu, Mount Edgecombe, Mpumalanga, New Germany, Pinetown, Queensburgh, Tongaat, Umdloti, Umhlanga, Umlazi, Verulam, Westville	eThekweni
Greater Kokstad	Bonny Ridge, Franklin, Kingscote, Kokstad, New Amalfi, Swartberg	Harry Gwala
KwaDukuza	Ballito, Blythedale Beach, Shakaskraal, Stanger, Tinley Manor Beach, Zinkwazi Beach	Ilembe
Msunduzi	Edendale, Pietermaritzburg	uMgungundlovu
Newcastle	Madadeni, Newcastle, Osizweni	Amajuba
Ray Nkonyeni	Hibberdene, Margate, Marina Beach, Munster, Port Edward, Port Shepstone, Ramsgate, Shelly Beach, Southbroom, St Michael's-on-Sea, Trafalgar, Uvongo	Ugu
Umdoni	Pennington, Scottburgh, Umzinto	Ugu
uMngeni	Hilton, Howick, Nottingham Road	uMgungundlovu

**Table 20 – Municipalities covered in the monthly survey: North West**

<b>Municipality</b>	<b>Main towns within municipal boundaries</b>	<b>District municipality</b>
City of Matlosana	Hartbeesfontein, Klerksdorp, Orkney, Stilfontein	Dr Kenneth Kaunda
Ditsobotla	Coligny, Itsoseng, Lichtenburg	Ngaka Modiri Molema
Madibeng	Brits, De Wildt, Hartbeespoort, Letlhabile	Bojanala Platinum
Mahikeng	Mafikeng, Ottoshoop	Ngaka Modiri Molema
Naledi	Stella, Vryburg	Dr Ruth Segomotsi Mompati
Ramotshere Moiloa	Zeerust	Ngaka Modiri Molema
Rustenburg	Marikana, Rustenburg	Bojanala Platinum
Tlokwe City Council	Potchefstroom	Dr Kenneth Kaunda

**Table 21 – Municipalities covered in the monthly survey: Gauteng**

<b>Municipality</b>	<b>Main towns within municipal boundaries</b>	<b>District municipality</b>
City of Johannesburg	Alexandra, Eikenhof, Eldorado Park, Ennerdale, Fourways, Florida, Grasmere, Halfway House, Honeydew, Johannesburg, Kyalami, Lawley Estate, Lenasia, Midrand, Modderfontein, Randburg, Randjiesfontein, Rivonia, Roodepoort, Sandton, Soweto, Van Wyksrust	City of Johannesburg
City of Tshwane	Akasia, Atteridgeville, Babelegi, Bon Accord, Bronkhorstspuit, Centurion, Diloppe, Doornrandjies, Ekangala, Erasmia, Ga-Mokone, Ga-Rankuwa, Garsfontein, Hammanskraal, Irene, Klippan, Mabopane, Mamelodi, Onderstepoort, Pinedene, Pretoria, Pretoria North, Soshanguve, Temba, Tierpoort, Tswaiing, Valhalla, Welbekend, Winterveld	City of Tshwane
Ekurhuleni	Alberton, Bedfordview, Benoni, Boksburg, Brakpan, Daveyton, Duduza, Edenvale, Germiston, Katlehong, Kempton Park, KwaThema, Nigel, Springs, Tembisa, Thokoza, Tsakane, Vosloorus	Ekurhuleni
Emfuleni	Boipatong, Bophelong, Evaton, Sebokeng, Sharpeville, Vanderbijlpark, Vereeniging	Sedibeng
Lesedi	Heidelberg, Rensburgdorp, Ratanda	Sedibeng
Merafong City	Carletonville, Fochville, Khutsong	West Rand
Midvaal	Daleside, De Deur, Henly-on-Klip, Highbury, Meyerton, Randvaal, Walkerville	Sedibeng
Mogale City	Battery, Elberta, Hekpoort, Krugersdorp, Luipaardsvlei, Magaliesburg, Muldersdrift, Nootgedacht, Thorndale	West Rand
Randfontein	Finsbury, Kocksoord, Mohlakeng, Randfontein	West Rand
Westonaria	Bekkersdal, Venterspos, Westonaria	West Rand

**Table 22 – Municipalities covered in the monthly survey: Mpumalanga**

<b>Municipality</b>	<b>Main towns within municipal boundaries</b>	<b>District municipality</b>
City of Mbombela	Hazyview, KaNyamazane, Nelspruit, White River	Ehlanzeni
Emalahleni	KwaGuqa, Witbank	Nkangala
Govan Mbeki	Bethal, Evander, Leandra, Secunda	Gert Sibande
Msukaligwa	Breyton, Chrissiesmeer, Davel, Ermelo, Lothair, Sheepmoor, Warbuton	Gert Sibande
Nkomazi	Hectorspruit, Komatipoort, Malelane, Marloth Park	Ehlanzeni
Steve Tshwete	Hendrina, Mhluzi, Middelburg	Nkangala
Victor Khanye	Argent, Delmas, Eloff, Sundra	Nkangala

**Table 23 – Municipalities covered in the monthly survey: Limpopo**

<b>Municipality</b>	<b>Main towns within municipal boundaries</b>	<b>District municipality</b>
Greater Tzaneen	Haenertsburg, Letsitele, Politsi, Rubbervale, Nkowankowa, Tzaneen	Mopani
Modimolle	Haakdong, Mabaleng, Modimolle, Palala	Waterberg
Mogalakwena	Drummondlea, Mahwelereng, Mokopane, Uitzicht	Waterberg
Mookgophong	Crecy, Immerpan, Mookgophong, Thusang	Waterberg
Musina	Beitbridge, Bridgewater, Brombeek, Evangelina, Huntleigh, Mopane, Musina, Tshipise	Vhembe
Polokwane	Polokwane, Seshego	Capricorn
Thabazimbi	Dwaalboom, Northam, Rooiberg, Thabazimbi	Waterberg

## Explanatory notes

### Introduction

- 1 Statistics South Africa (Stats SA) conducts a monthly survey of metropolitan municipalities and large local municipalities on building plans passed and buildings completed for the private sector. This publication contains aggregated data for the twelve months of the calendar year 2023. The survey collects detailed information of building plans passed and buildings completed reported for:
- residential buildings;
  - non-residential buildings; and
  - additions and alterations.

The figures obtained from municipalities do not include the bulk of low-cost dwelling-houses. According to some municipalities they are not always notified about subsidised low-cost housing projects being executed in their area of jurisdiction.

### Scope of the survey

- 2 This survey covers metropolitan municipalities and large local municipalities conducting activities for the private sector regarding:
- approval of building plans; and
  - final inspection of completed buildings and issuing of occupation certificates.

### Classification

- 3 Building activities are classified in division five according to the 1993 edition of the *Standard Industrial Classification of All Economic Activities (SIC)*, Fifth Edition, Report No. 09-90-02. The SIC is based on the 1990 *International Standard Industrial Classification of All Economic Activities (ISIC)* with suitable adaptations for local conditions.

### Statistical unit

- 4 The statistical unit for the collection of information is a municipality.

### Survey methodology and design

- 5 Stats SA conducts a monthly survey of metropolitan municipalities and large local municipalities on building plans passed and buildings completed. An annual survey of the remaining municipalities is conducted regarding buildings completed. The monthly survey represents approximately 88 per cent of the total value of buildings completed. Information is collected by email, fax and telephone.

### Comparison between building plans passed and buildings completed

- 6 No direct comparison can be made between building plans passed and buildings completed for the following reasons:
- an unknown number of building plans are passed and afterwards not executed;
  - if building operations have not commenced within the first year after approval, building plans are resubmitted;
  - the time-lag between the date of passing of a building plan and the date of completion of the building varies considerably; and
  - according to municipalities, final inspections of completed buildings are not always executed and therefore not recorded as completed.

### Reliability of estimates

- 7 Inaccuracies may occur because of imperfections in reporting by municipalities. Every effort is made to reduce errors to a minimum by carefully editing, evaluating and querying of data.

### Collection rate

- 8 The collection rate for the year 2023 was 87,9%.



- Revised figures**                    **9**    Revised figures are mainly due to late submission of data to Stats SA, or respondents reporting revisions or corrections to their figures. Figures for 2021, 2022 and 2023 are preliminary and subject to revision.
- Number of dwelling-houses**       **10**    The number of dwelling-houses is shown and not the number of plans passed, since one plan may cover more than one dwelling-house.
- Related publications**               **11**    Users may also wish to refer to the following publications:
- P5041.1: *Selected building statistics of the private sector as reported by local government institutions* issued monthly;
  - P9101.2: *Actual and expected expenditure on construction by the public sector per region* issued annually; and
  - *Building Statistics* (Report No. 50-11-01) issued annually.
- Rounding-off of figures**           **12**    The figures in the tables have, where necessary, been rounded off to the nearest digit shown. There may, therefore, be slight discrepancies between the sums of the constituent items and the totals shown.
- Symbols and abbreviations**       **13**    0            Nil or figure too small to publish  
    \*            Revised figures  
    ..          No data reported  
    Stats SA    Statistics South Africa  
    SIC        Standard Industrial Classification of All Economic Activities  
    ISIC      International Standard Industrial Classification of All Economic Activities  
    GDP        Gross domestic product

## Glossary

<b>Additions and alterations</b>	Extensions to existing buildings as well as internal and external alterations of existing buildings.
<b>Annual percentage change</b>	The annual percentage change is the change in the actual values of building activities (building plans passed or buildings completed) of the relevant year compared with the actual values of building activities (building plans passed or buildings completed) of the previous year expressed as a percentage.
<b>Block of flats</b>	High-density housing consisting of a number of self-contained dwelling-units with at least one living-room together with a kitchen and bathroom conjoined to similar units in one building.
<b>District municipality</b>	A municipality that has municipal executive and legislative authority in an area that includes more than one municipality, and which is described in section 155(1) of the Constitution as a category C municipality (refer to Local Government: Municipal Structure Act, 1998 (Act No. 117 of 1998)).
<b>Dwelling-house</b>	A free-standing, complete structure on a separate stand or a self-contained dwelling-unit, e.g. granny flat, on the same premises as an existing residence. Out-buildings and garages are included.
<b>Municipality</b>	A generic term describing the unit of government in the third sphere responsible for local government in a geographically demarcated area. It includes district, metropolitan and local municipalities.
<b>Local municipality</b>	A municipality that shares municipal executive and legislative authority in its area with a district municipality within whose area it falls, and which is described in section 155(1) of the Constitution as a category B municipality (refer to Local Government: Municipal Structure Act, 1998 (Act No. 117 of 1998)).
<b>Metropolitan municipality</b>	A municipality that has municipal executive and legislative authority in an area that includes more than one municipality, and which is described in section 155(1) of the Constitution as a category A municipality (refer to Local Government: Municipal Structure Act, 1998 (Act No. 117 of 1998)).
<b>Non-residential buildings</b>	Factories and commercial, financial and other office buildings, as well as other buildings not used for residential purposes, such as churches, halls, clubs, schools and hospitals.
<b>Other residential buildings</b>	Institutions for the disabled, boarding houses, hostels and tourism accommodation e.g. hotels, motels, guest-houses, holiday chalets, bed-and-breakfast accommodation, entertainment centres and casinos.
<b>Reference period</b>	Reference period for this statistical release refers to the calendar year 2023.
<b>Residential buildings</b>	Dwelling-houses, flats, townhouses and other residential buildings.
<b>Townhouses</b>	Multiple, medium-density dwelling-units including cluster housing, group housing, simplexes, duplexes, triplexes and other similar dwelling-units which are usually grouped together, with one level of each unit on ground level. This category excludes blocks of flats.

## General information

Stats SA publishes approximately 300 different statistical releases each year. It is not economically viable to produce them in more than one of South Africa's 12 official languages. Since the releases are used extensively, not only locally but also by international economic and social-scientific communities, Stats SA releases are only published in English.

Stats SA has copyright on this publication. Users may apply the information as they wish, provided that they acknowledge Stats SA as the source of the basic data wherever they process, apply, utilise, publish or distribute the data; and also that they specify that the relevant application and analysis (where applicable) result from their own processing of the data.

### Advance release calendar

An advance release calendar is disseminated on [www.statssa.gov.za](http://www.statssa.gov.za).

### Stats SA products

A complete set of Stats SA publications is available at the Stats SA Library and the following libraries:

National Library of South Africa, Pretoria Division  
National Library of South Africa, Cape Town Division  
Natal Society Library, Pietermaritzburg  
Library of Parliament, Cape Town  
Bloemfontein Public Library  
Johannesburg Public Library  
Eastern Cape Library Services, Qonce  
Central Regional Library, Polokwane  
Central Reference Library, Mbombela  
Central Reference Collection, Kimberley  
Central Reference Library, Mmabatho

Stats SA also provides a subscription service.

### Electronic services

A large range of data are available via online services. For more details about our electronic data services, contact Stats SA's user information services at (012) 310 8600. You can visit us on the internet at: [www.statssa.gov.za](http://www.statssa.gov.za).

### Enquiries

Telephone number: 082 888 2374 (technical enquiries)  
(012) 310 8600 (user information services)

Email: [joycee@statssa.gov.za](mailto:joycee@statssa.gov.za) (technical enquiries)  
[info@statssa.gov.za](mailto:info@statssa.gov.za) (user information services)

Postal address: Private Bag X44, Pretoria, 0001

*Produced by Stats SA*