



**stats sa**

Department:  
Statistics South Africa  
**REPUBLIC OF SOUTH AFRICA**

Private Bag X44, Pretoria, 0001, South Africa, ISibalo House, Koch Street, Salvokop, Pretoria, 0002  
www.statssa.gov.za, info@statssa.gov.za, Tel +27 12 310 8911

## **STATISTICAL RELEASE**

### **P5041.3**

# Selected building statistics of the private sector as reported by local government institutions

2022

Embargoed until:  
28 June 2023  
14:30

ENQUIRIES:  
Joyce Essel-Mensah  
Tel: 082 888 2374

FORTHCOMING ISSUE:  
2023

EXPECTED RELEASE DATE:  
June 2024

Dipalopalo tsa Aforikaborwa • Dipalopalo tsa Aforika Borwa • Ezazibalo zaseNingizimu Afrika • Tshitatistika Afrika Tshipembe • Tinhlayo Afrika-Dzonga

Statistieke Suid-Afrika • Dipalopalo tša Aforika Borwa • Telubalo zaseNingizimu Afrika • EzeeNkcukacha maNani zoMzantsi Afrika • Iimbalobalo zeSewula Afrika

**IMPROVING LIVES THROUGH DATA ECOSYSTEMS**



## Contents

<b>Introduction</b> .....	<b>ii</b>
Key findings: Comparison between 2021 and 2022 .....	ii
Key findings for 2022 .....	vi
List of detailed tables .....	xii
List of municipalities covered in the monthly survey.....	xiii
Municipal reporting of building plans passed aggregated to provincial level .....	1
Municipal reporting of buildings completed aggregated to provincial level .....	17
Municipalities covered in the monthly survey .....	33
<b>Explanatory notes</b> .....	<b>40</b>
<b>Glossary</b> .....	<b>42</b>
<b>General information</b> .....	<b>43</b>

## Introduction

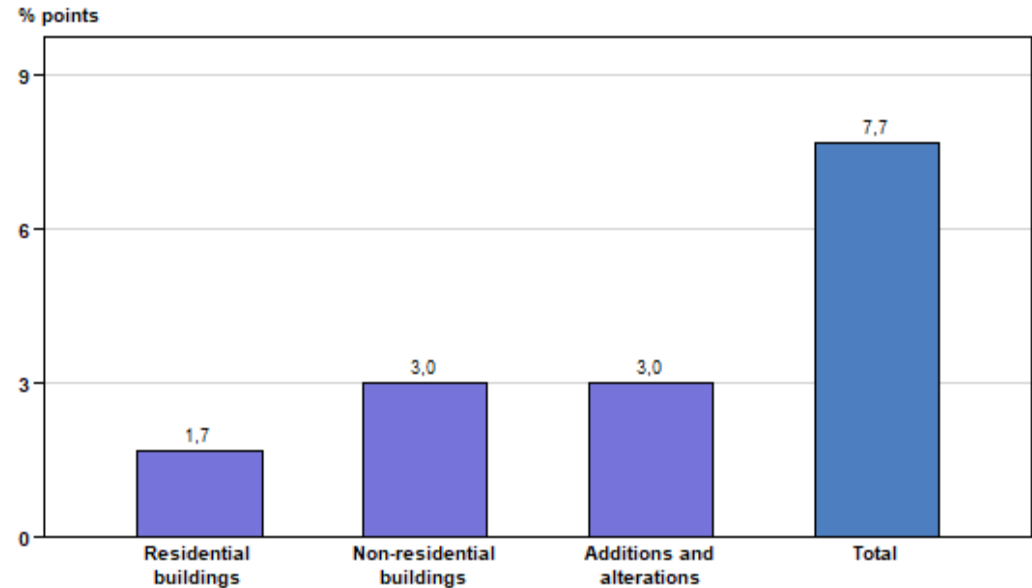
Data published in this statistical release are based on a monthly survey of metropolitan municipalities and large local municipalities on building plans passed and buildings completed for the private sector, released at national and provincial levels as P5041.1. This annual release contains aggregated data for the 12 months of 2022 by province, municipality and type of building.

### Key findings: Comparison between 2021 and 2022

**Table A.1 – Selected key figures regarding building plans passed at current prices**

Type of building	2021 R'000	2022 R'000	% change between 2021 and 2022	Contribution (% points) to the % change in value of building plans passed between 2021 and 2022	Difference in value between 2021 and 2022 R'000
<b>Residential buildings</b>	<b>60 298 102</b>	<b>62 190 830</b>	<b>3,1</b>	<b>1,7</b>	<b>1 892 728</b>
Dwelling-houses	38 025 092	40 595 148	6,8	2,4	2 570 056
Flats and townhouses	21 004 312	20 506 623	-2,4	-0,5	-497 689
Other residential buildings	1 268 698	1 089 059	-14,2	-0,2	-179 639
<b>Non-residential buildings</b>	<b>18 848 041</b>	<b>22 107 599</b>	<b>17,3</b>	<b>3,0</b>	<b>3 259 558</b>
Office and banking space	2 519 708	2 527 610	0,3	0,0	7 902
Shopping space	4 036 502	4 735 072	17,3	0,6	698 570
Industrial and warehouse space	10 130 341	11 562 501	14,1	1,3	1 432 160
Other non-residential buildings	2 161 490	3 282 416	51,9	1,0	1 120 926
<b>Additions and alterations</b>	<b>29 909 608</b>	<b>33 188 986</b>	<b>11,0</b>	<b>3,0</b>	<b>3 279 378</b>
<b>Total</b>	<b>109 055 751</b>	<b>117 487 415</b>	<b>7,7</b>	<b>7,7</b>	<b>8 431 664</b>

**Figure A.1 – Contribution (percentage points) of type of building to the percentage change in the total value of building plans passed between 2021 and 2022**

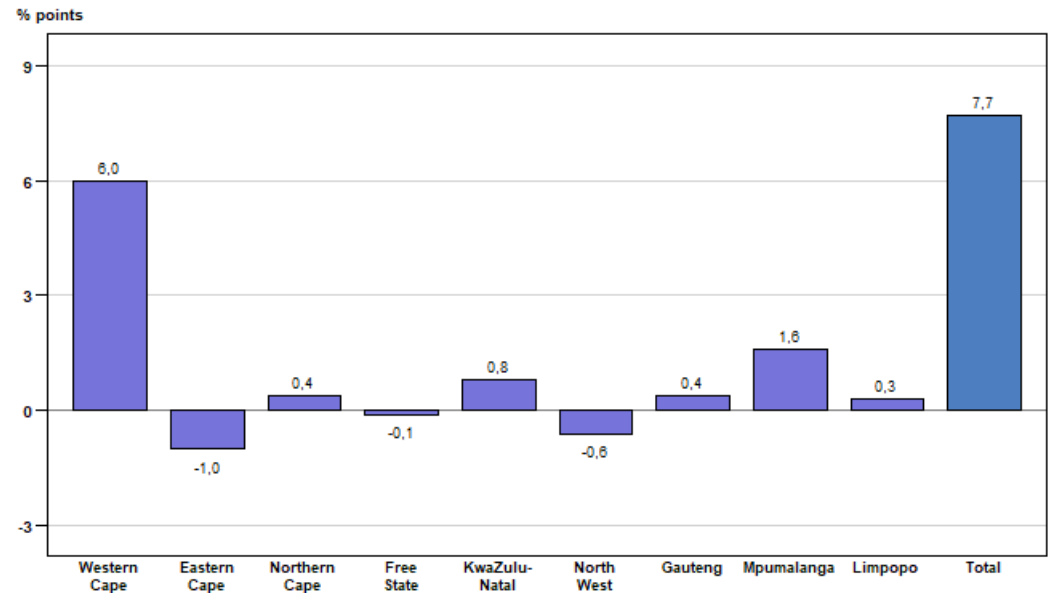


The value of building plans passed by larger municipalities (at current prices) increased by 7,7% (R8 431,7 million) in 2022 compared with 2021. Increases were reported for non-residential buildings (17,3% or R3 259,6 million), additions and alterations (11,0% or R3 279,4 million) and residential buildings (3,1% or R1 892,7 million) – see Table A.1.

**Table A.2 – Building plans passed by larger municipalities at current prices by province: 2021 vs 2022**

Province	2021 R'000	2022 R'000	% change between 2021 and 2022	Contribution (% points) to the % change in the value of building plans passed between 2021 and 2022	Difference in value between 2021 and 2022 R'000
Western Cape	30 467 857	36 993 314	21,4	6,0	6 525 457
Eastern Cape	8 411 924	7 335 826	-12,8	-1,0	-1 076 098
Northern Cape	1 072 383	1 515 517	41,3	0,4	443 134
Free State	2 480 087	2 389 128	-3,7	-0,1	-90 959
KwaZulu-Natal	18 893 996	19 750 562	4,5	0,8	856 566
North West	4 790 417	4 126 632	-13,9	-0,6	-663 785
Gauteng	36 630 697	37 017 989	1,1	0,4	387 292
Mpumalanga	3 894 173	5 640 419	44,8	1,6	1 746 246
Limpopo	2 414 217	2 718 028	12,6	0,3	303 811
<b>Total</b>	<b>109 055 751</b>	<b>117 487 415</b>	<b>7,7</b>	<b>7,7</b>	<b>8 431 664</b>

**Figure A.2 – Provincial contribution (percentage points) to the percentage change in the total value of building plans passed between 2021 and 2022**

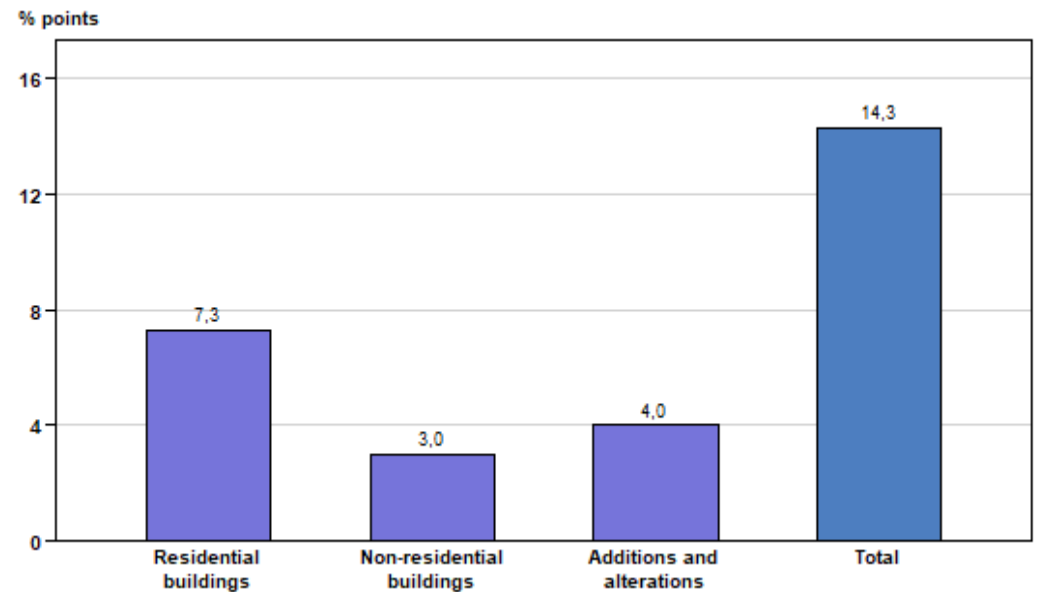


The year-on-year increase of 7,7% in the total value of building plans passed in 2022 is mainly attributed to positive contributions reported by Western Cape (contributing 6,0 percentage points or R6 525,5 million), Mpumalanga (contributing 1,6 percentage points or R1 746,2 million) and KwaZulu-Natal (contributing 0,8 of a percentage point or R856,6 million) – see Table A.2 and Figure A.2.

**Table B.1 – Selected key figures regarding buildings reported as completed at current prices**

Type of building	2021 R'000	2022 R'000	% change between 2021 and 2022	Contribution (% points) to the % change in the value of buildings completed between 2021 and 2022	Difference in value between 2021 and 2022 R'000
<b>Residential buildings</b>	<b>32 858 901</b>	<b>37 189 537</b>	<b>13,2</b>	<b>7,3</b>	<b>4 330 636</b>
Dwelling-houses	19 642 202	24 114 993	22,8	7,5	4 472 791
Flats and townhouses	12 658 212	12 428 034	-1,8	-0,4	-230 178
Other residential buildings	558 487	646 510	15,8	0,1	88 023
<b>Non-residential buildings</b>	<b>12 980 617</b>	<b>14 751 632</b>	<b>13,6</b>	<b>3,0</b>	<b>1 771 015</b>
Office and banking space	1 690 588	1 135 248	-32,8	-0,9	-555 340
Shopping space	3 894 940	3 523 346	-9,5	-0,6	-371 594
Industrial and warehouse space	6 047 233	7 887 057	30,4	3,1	1 839 824
Other non-residential buildings	1 347 856	2 205 981	63,7	1,4	858 125
<b>Additions and alterations</b>	<b>13 481 552</b>	<b>15 878 831</b>	<b>17,8</b>	<b>4,0</b>	<b>2 397 279</b>
<b>Total</b>	<b>59 321 070</b>	<b>67 820 000</b>	<b>14,3</b>	<b>14,3</b>	<b>8 498 930</b>

**Figure B.1 – Contribution (percentage points) of type of building to the percentage change in the total value of buildings reported as completed between 2021 and 2022**

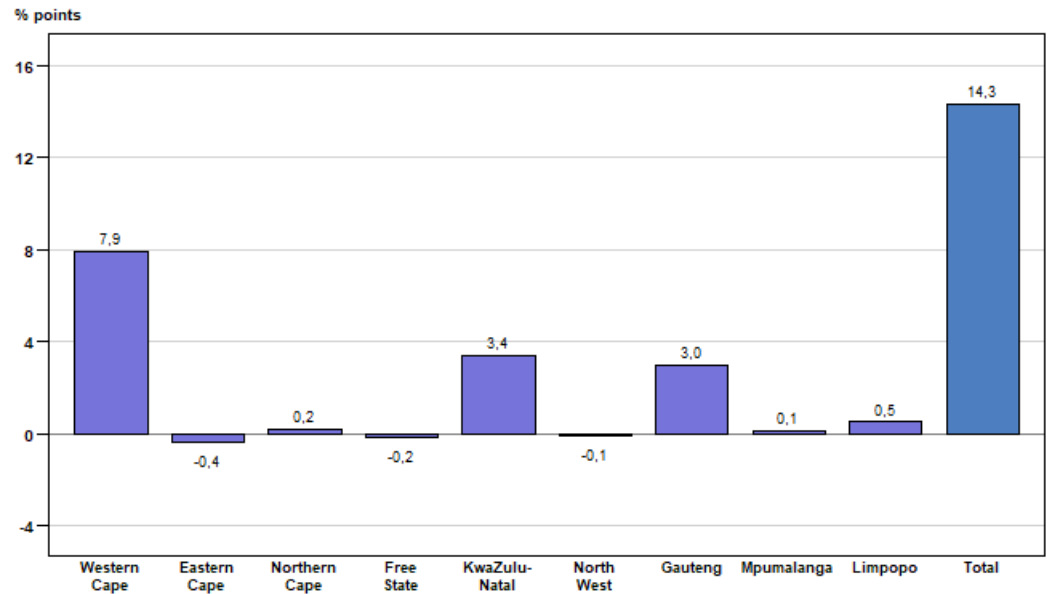


The value of buildings reported as completed (at current prices) increased by 14,3% (R8 498,9 million) in 2022 compared with 2021. Increases were reported for residential buildings (13,2% or R4 330,6 million), additions and alterations (17,8% or R2 397,3 million) and non-residential buildings (13,6% or R1 771,0 million) – see Table B.1.

**Table B.2 – Buildings reported as completed by larger municipalities at current prices by province: 2021 vs 2022**

Province	2021 R'000	2022 R'000	% change between 2021 and 2022	Contribution (% points) to the % change in the value of buildings completed between 2021 and 2022	Difference in value between 2021 and 2022 R'000
Western Cape	22 396 027	27 089 077	21,0	7,9	4 693 050
Eastern Cape	3 214 562	2 986 724	-7,1	-0,4	-227 838
Northern Cape	656 431	767 340	16,9	0,2	110 909
Free State	676 334	557 088	-17,6	-0,2	-119 246
KwaZulu-Natal	7 745 262	9 770 918	26,2	3,4	2 025 656
North West	2 310 545	2 222 991	-3,8	-0,1	-87 554
Gauteng	20 414 078	22 174 236	8,6	3,0	1 760 158
Mpumalanga	1 142 488	1 177 929	3,1	0,1	35 441
Limpopo	765 343	1 073 697	40,3	0,5	308 354
<b>Total</b>	<b>59 321 070</b>	<b>67 820 000</b>	<b>14,3</b>	<b>14,3</b>	<b>8 498 930</b>

**Figure B.2 – Provincial contribution (percentage points) to the percentage change in the total value of buildings reported as completed between 2021 and 2022**



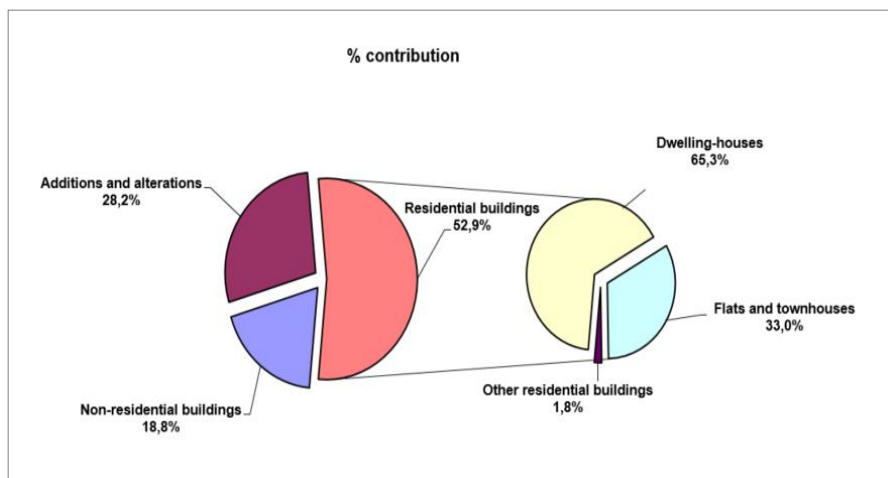
The largest provincial contributors to the year-on-year increase of 14,3% in the value of buildings reported as completed were Western Cape (contributing 7,9 percentage points or R4 693,1 million), KwaZulu-Natal (contributing 3,4 percentage points or R2 025,7 million) and Gauteng (contributing 3,0 percentage points or R1 760,2 million) – see Table B.2 and Figure B.2.

## Key findings for 2022

### Value of building plans passed by larger municipalities for 2022 by type of building

The value of building plans passed for 2022 amounted to R117 487,4 million, showing an increase of 7,7% compared with 2021. Residential buildings contributed the most to the total value of building plans passed (52,9% or R62 190,8 million), followed by additions and alterations (28,2% or R33 189,0 million) and non-residential buildings (18,8% or R22 107,6 million) – see Figure 1 and Table 1, pages 1 and 2.

**Figure 1 – Percentage contribution of type of building to the total value of building plans passed for 2022**

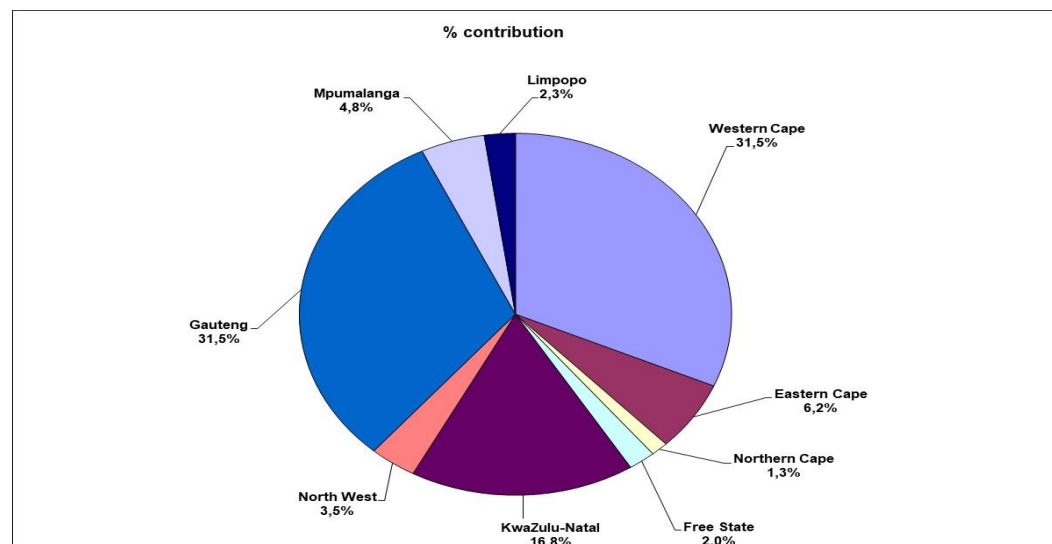


Regarding residential building plans passed, the largest contribution was reported for dwelling-houses (65,3% or R40 595,1 million), followed by flats and townhouses (33,0% or R20 506,6 million) and ‘other’ residential buildings (1,8% or R1 089,1 million) – see Table 2, pages 3 and 4.

### Value of building plans passed by larger municipalities for 2022 by province

The highest provincial contributions to the total value of building plans passed (R117 487,4 million) for 2022 were reported for Gauteng (31,5% or R37 018,0 million), Western Cape (31,5% or R36 993,3 million) and KwaZulu-Natal (16,8% or R19 750,6 million) – see Figure 2 and Table 1, pages 1 and 2. Table D (page viii) lists the largest municipal contributors to the value of building plans passed for 2022 by province.

**Figure 2 – Provincial percentage contribution to the total value of building plans passed for 2022**



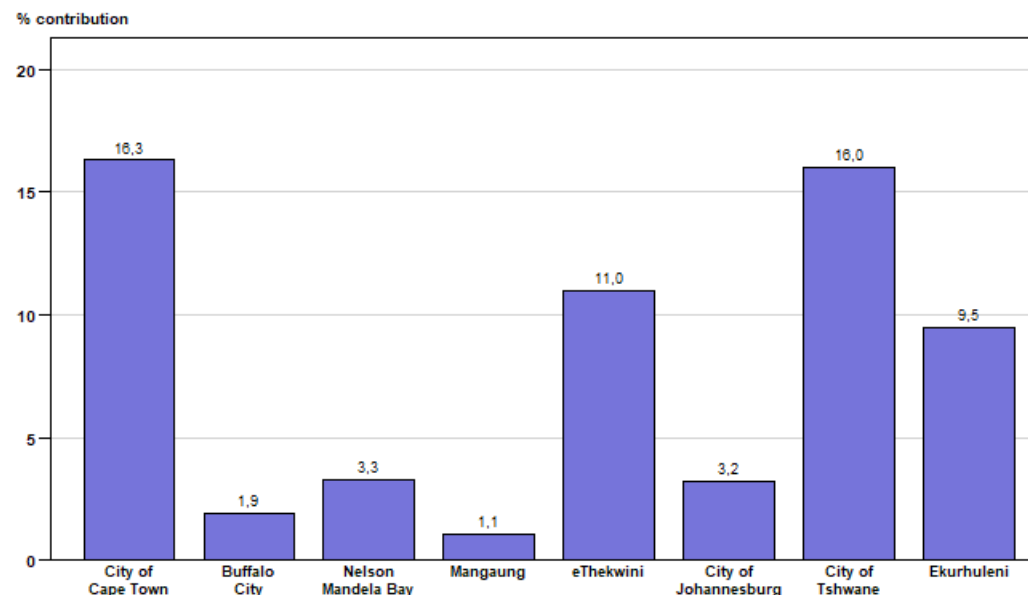
**Value of building plans passed by the eight metropolitan municipalities for 2022**

The combined value of building plans passed for the eight metropolitan municipalities contributed 62,2% or R73 114,2 million to the total value of building plans passed (R117 487,4 million) for 2022 – see Table C.

**Table C – Value of building plans passed by the eight metropolitan municipalities for 2022**

Metropolitan municipality	Value of building plans passed at metropolitan municipal level R million	Metropolitan municipal % contribution to the total value of building plans passed
City of Cape Town	19 129,9	16,3
Buffalo City	2 183,1	1,9
Nelson Mandela Bay	3 869,2	3,3
Mangaung	1 325,8	1,1
eThekwini	12 894,4	11,0
City of Johannesburg	3 703,8	3,2
City of Tshwane	18 807,2	16,0
Ekurhuleni	11 200,8	9,5
<b>Total metropolitan municipalities</b>	<b>73 114,2</b>	<b>62,2</b>

**Figure 3 – Metropolitan municipality percentage contribution to the total value of building plans passed for 2022**



The highest metropolitan municipality contribution to the total value of building plans passed for 2022 was reported by City of Cape Town (16,3% or R19 129,9 million), followed by City of Tshwane (16,0% or R18 807,2 million), eThekwini (11,0% or R12 894,4 million) and Ekurhuleni (9,5% or R11 200,8 million) – see Table C and Figure 3.



**Table D – The largest municipal contributors to the value of building plans passed for 2022 by province**

Province/municipality	Value of building plans passed at provincial/municipal level R million	Municipal % contribution to the value of building plans passed at provincial level
<b>Gauteng</b>	<b>37 018,0</b>	
City of Tshwane	18 807,2	50,8
Ekurhuleni	11 200,8	30,3
City of Johannesburg	3 703,8	10,0
Mogale City	831,1	2,2
Midvaal	779,4	2,1
<b>Western Cape</b>	<b>36 993,3</b>	
City of Cape Town	19 129,9	51,7
Knysna	6 491,2	17,5
George	2 127,4	5,8
Mossel Bay	1 926,0	5,2
Overstrand	1 830,1	4,9
<b>KwaZulu-Natal</b>	<b>19 750,6</b>	
eThekweni	12 894,4	65,3
KwaDukuza	3 148,6	15,9
Umngeni	1 210,1	6,1
Msunduzi	750,8	3,8
Newcastle	511,6	2,6
<b>Eastern Cape</b>	<b>7 335,8</b>	
Nelson Mandela Bay	3 869,2	52,7
Buffalo City	2 183,1	29,8
Kouga	587,1	8,0
Ndlambe	444,0	6,1
King Sabata Dalindyebo	148,0	2,0

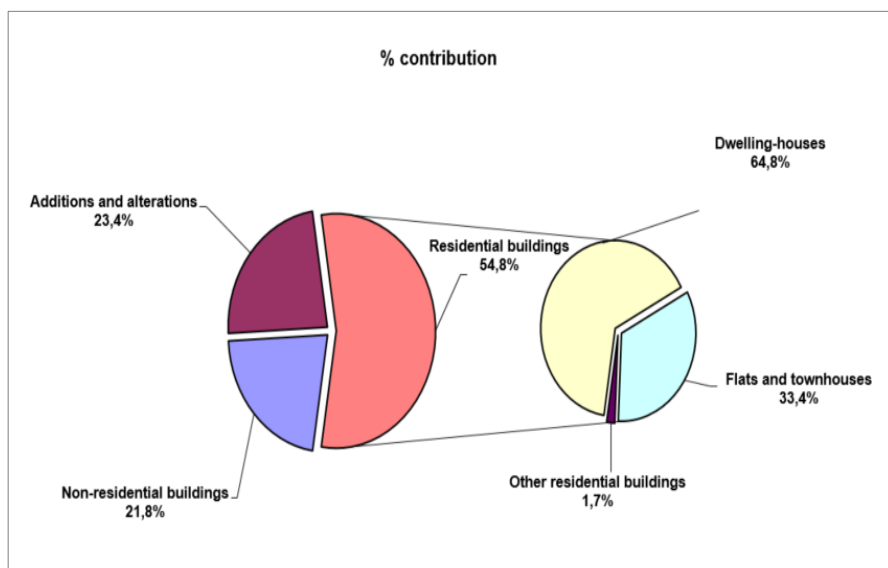
**Table D – The largest municipal contributors to the value of building plans passed for 2022 by province (concluded)**

Province/municipality	Value of building plans passed at provincial/municipal level R million	Municipal % contribution to the value of building plans passed at provincial level
<b>Mpumalanga</b>	<b>5 640,4</b>	
City of Mbombela	1 944,8	34,5
Steve Tshwete	1 363,7	24,2
Emalahleni	1 274,2	22,6
Govan Mbeki	484,0	8,6
Nkomazi	409,2	7,3
<b>North West</b>	<b>4 126,6</b>	
Madibeng	1 205,8	29,2
Rustenburg	938,5	22,7
Tlokwe City Council	687,5	16,7
City of Matlosana	606,9	14,7
Mahikeng	426,7	10,3
<b>Limpopo</b>	<b>2 718,0</b>	
Polokwane	1 594,0	58,6
Greater Tzaneen	440,8	16,2
Mogalakwena	194,2	7,1
Musina	164,3	6,0
Modimolle	148,5	5,5
<b>Free State</b>	<b>2 389,1</b>	
Mangaung	1 325,8	55,5
Metsimaholo	298,0	12,5
Matjhabeng	262,9	11,0
Moqhaka	192,8	8,1
Dihlabeng	174,4	7,3
<b>Northern Cape</b>	<b>1 515,5</b>	
Sol Plaatje	851,7	56,2
Dawid Kruiper	553,8	36,5
Ga-Segonyana	55,6	3,7
Kai !Garib	54,4	3,6

### Value of buildings reported as completed to larger municipalities for 2022 by type of building

The value of buildings reported as completed during 2022 amounted to R67 820,0 million, which is 14,3% higher compared with the R59 321,1 million reported for 2021. Residential buildings contributed the most to the total value of buildings reported as completed (54,8% or R37 189,5 million), followed by additions and alterations (23,4% or R15 878,8 million) and non-residential buildings (21,8% or R14 751,6 million) – see Figure 4 and Table 8, pages 17 and 18.

**Figure 4 – Percentage contribution of type of building to the total value of buildings reported as completed during 2022**

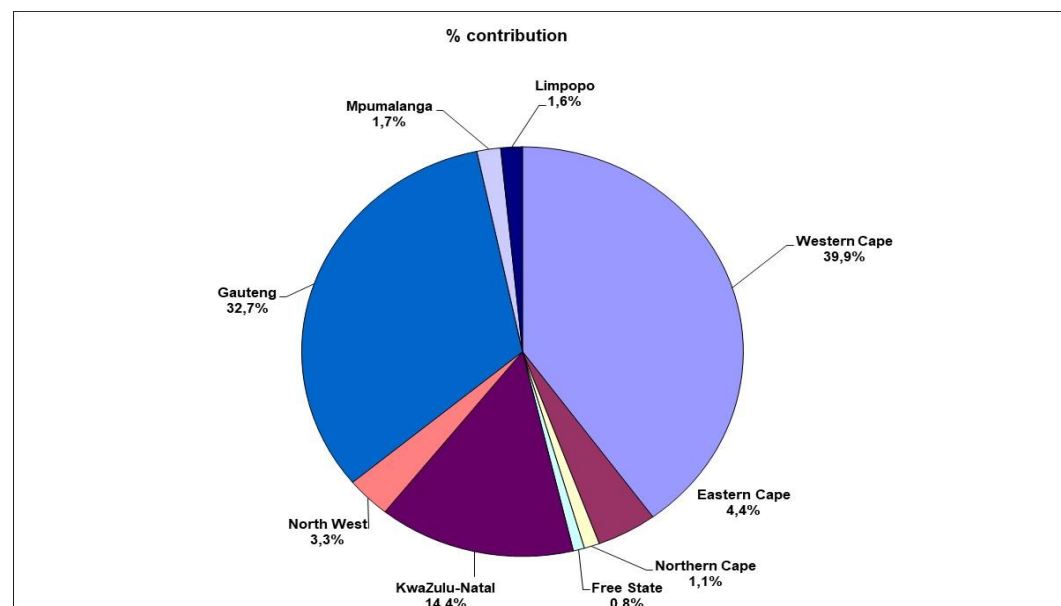


Regarding residential buildings reported as completed, the largest contributor was dwelling-houses (64,8% or R24 115,0 million), followed by flats and townhouses (33,4% or R12 428,0 million) and ‘other’ residential buildings (1,7% or R646,5 million) – see Table 9, pages 19 and 20.

### Value of buildings reported as completed to larger municipalities for 2022 by province

The largest provincial contributor to the total value of buildings reported as completed during 2022 was Western Cape (contributing 39,9% or R27 089,1 million to the total of R67 820,0 million for South Africa), followed by Gauteng (32,7% or R22 174,2 million) and KwaZulu-Natal (14,4% or R9 770,9 million) – see Figure 5 and Table 8, pages 17 and 18. Table F (page xi) lists the largest municipal contributors to the value of buildings reported as completed for 2022 by province.

**Figure 5 – Provincial percentage contribution to the total value of buildings reported as completed during 2022**



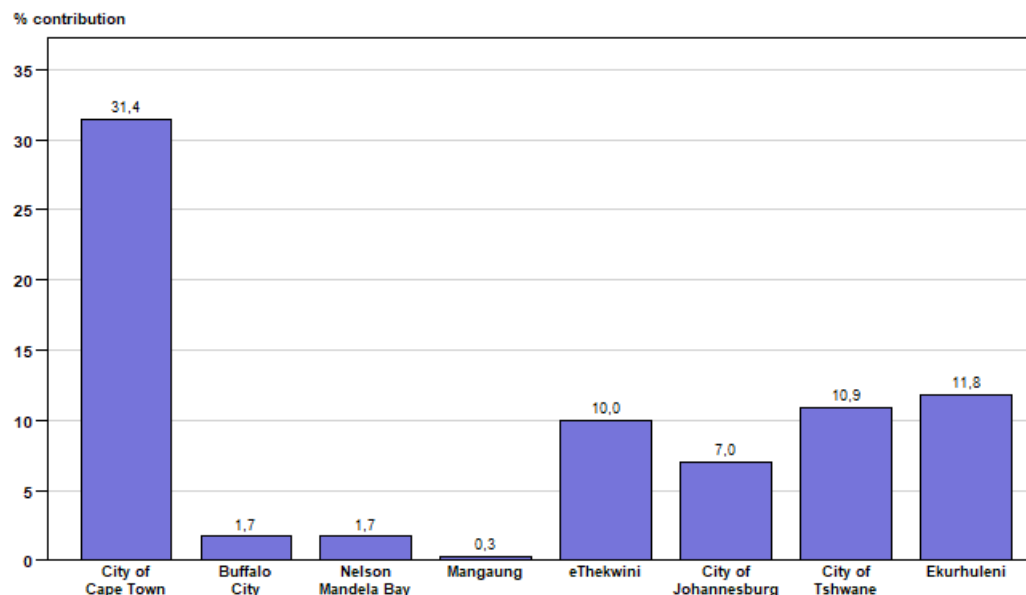
**Value of buildings reported as completed to the eight metropolitan municipalities for 2022**

The combined value of buildings reported as completed for the eight metropolitan municipalities contributed 74,9% or R50 792,4 million to the total value of buildings reported as completed (R67 820,0 million) during 2022 – see Table E.

**Table E – Value of buildings reported as completed to the eight metropolitan municipalities for 2022**

Metropolitan municipality	Value of buildings completed at metropolitan municipal level R million	Metropolitan municipal % contribution to the total value of buildings completed
City of Cape Town	21 288,1	31,4
Buffalo City	1 142,9	1,7
Nelson Mandela Bay	1 144,3	1,7
Mangaung	228,8	0,3
eThekwini	6 805,3	10,0
City of Johannesburg	4 736,4	7,0
City of Tshwane	7 411,5	10,9
Ekurhuleni	8 035,1	11,8
<b>Total metropolitan municipalities</b>	<b>50 792,4</b>	<b>74,9</b>

**Figure 6 – Metropolitan percentage contribution to the total value of buildings reported as completed for 2022**



The highest metropolitan contribution to the total value of buildings reported as completed during 2022 was City of Cape Town (31,4% or R21 288,1 million), followed by Ekurhuleni (11,8% or R8 035,1 million), City of Tshwane (10,9% or R7 411,5 million), eThekwini (10,0% or R6 805,3 million) and City of Johannesburg (7,0% or R4 736,4 million) – see Table E and Figure 6.

**Table F – The largest municipal contributors to the value of buildings reported as completed for 2022 by province**

Province/municipality	Value of buildings completed at provincial/municipal level R million	Municipal % contribution to the value of buildings completed at provincial level
<b>Western Cape</b>	<b>27 089,1</b>	
City of Cape Town	21 288,1	78,6
Mossel Bay	1 114,6	4,1
George	1 082,5	4,0
Overstrand	816,1	3,0
Drakenstein	727,7	2,7
<b>Gauteng</b>	<b>22 174,2</b>	
Ekurhuleni	8 035,1	36,2
City of Tshwane	7 411,5	33,4
City of Johannesburg	4 736,4	21,4
Emfuleni	691,8	3,1
Midvaal	690,4	3,1
<b>KwaZulu-Natal</b>	<b>9 770,9</b>	
eThekweni	6 805,3	69,6
KwaDukuza	1 655,2	16,9
Umngeni	766,4	7,8
City of uMhlatuze	116,6	1,2
Msunduzi	116,4	1,2
<b>Eastern Cape</b>	<b>2 986,7</b>	
Nelson Mandela Bay	1 144,3	38,3
Buffalo City	1 142,9	38,3
Kouga	557,2	18,7
Ndlambe	68,8	2,3
King Sabata Dalindyebo	55,8	1,9

**Table F – The largest municipal contributors to the value of buildings reported as completed for 2022 by province (concluded)**

Province/municipality	Value of buildings completed at provincial/municipal level R million	Municipal % contribution to the value of buildings completed at provincial level
<b>North West</b>	<b>2 223,0</b>	
Madibeng	877,7	39,5
Rustenburg	437,2	19,7
Tlokwe City Council	363,8	16,4
City of Matlosana	308,9	13,9
Mahikeng	189,7	8,5
<b>Mpumalanga</b>	<b>1 177,9</b>	
City of Mbombela	662,8	56,3
Emalahleni	397,0	33,7
Govan Mbeki	80,2	6,8
Msukaligwa	18,1	1,5
Nkomazi	15,0	1,3
<b>Limpopo</b>	<b>1 073,7</b>	
Polokwane	784,3	73,0
Greater Tzaneen	187,6	17,5
Modimolle	52,0	4,8
Mogalakwena	41,8	3,9
Mookgophong	8,0	0,7
<b>Northern Cape</b>	<b>767,3</b>	
Dawid Kruiper	767,3	100,0
<b>Free State</b>	<b>557,1</b>	
Mangaung	228,8	41,1
Dihlabeng	140,0	25,1
Matjhabeng	69,8	12,5
Ngwathe	51,5	9,2
Metsimaholo	31,6	5,7

**Risenga Maluleke**  
**Statistician-General**

## LIST OF DETAILED TABLES

### PART 1 – MUNICIPAL REPORTING OF BUILDING PLANS PASSED AGGREGATED TO PROVINCIAL LEVEL

Table 1	– Number, square metres and value of building plans passed by municipalities for residential buildings, non-residential buildings and additions and alterations by province .....	1
Table 2	– Number, square metres and value of residential building plans passed by municipalities: dwelling-houses, flats and townhouses and other residential buildings by province .....	3
Table 3	– Number, square metres and value of building plans passed by municipalities for dwelling-houses by size of dwelling-house and province.....	
Table 4	– Number, square metres and value of building plans passed by municipalities for flats and townhouses by province .....	5
Table 5	– Number, square metres and value of building plans passed by municipalities for other residential buildings by province .....	7
Table 6.1	– Number, square metres and value of non-residential building plans passed by municipalities: office and banking space, shopping space and industrial and warehouse space by province .....	9
Table 6.2	– Number, square metres and value of non-residential building plans passed by municipalities: schools, nursery schools, crèches, hospitals, churches, sport clubs, recreation clubs and all other non-residential space by province .....	11
Table 7	– Number, square metres and value of building plans passed by municipalities for additions and alterations by province .....	13
		15

### PART 2 – MUNICIPAL REPORTING OF BUILDINGS COMPLETED AGGREGATED TO PROVINCIAL LEVEL

Table 8	– Number, square metres and value of residential buildings, non-residential buildings and additions and alterations reported as completed to municipalities by province .....	17
Table 9	– Number, square metres and value of residential buildings reported as completed to municipalities: dwelling-houses, flats and townhouses and other residential buildings by province.....	19
Table 10	– Number, square metres and value of dwelling-houses reported as completed to municipalities by size of dwelling-house by province.....	21
Table 11	– Number, square metres and value of flats and townhouses reported as completed to municipalities by province .....	23
Table 12	– Number, square metres and value of other residential buildings reported as completed to municipalities by province .....	25
Table 13.1	– Number, square metres and value of non-residential buildings reported as completed to municipalities by province: office and banking space, shopping space and industrial and warehouse space .....	27
Table 13.2	– Number, square metres and value of non-residential buildings reported as completed to municipalities by province: schools, nursery schools, crèches, hospitals, churches, sport clubs, recreation clubs and all other non-residential space .....	29
Table 14	– Number, square metres and value of additions and alterations reported as completed to municipalities by province.....	31

**LIST OF MUNICIPALITIES COVERED IN THE MONTHLY SURVEY**

Table 15	– Municipalities covered in the monthly survey: Western Cape .....	33
Table 16	– Municipalities covered in the monthly survey: Eastern Cape .....	34
Table 17	– Municipalities covered in the monthly survey: Northern Cape .....	34
Table 18	– Municipalities covered in the monthly survey: Free State .....	35
Table 19	– Municipalities covered in the monthly survey: KwaZulu-Natal .....	36
Table 20	– Municipalities covered in the monthly survey: North West .....	37
Table 21	– Municipalities covered in the monthly survey: Gauteng .....	38
Table 22	– Municipalities covered in the monthly survey: Mpumalanga .....	39
Table 23	– Municipalities covered in the monthly survey: Limpopo .....	39

**Part 1**  
**Municipal reporting of building plans passed  
aggregated to provincial level**

**Table 1 – Number, square metres and value of building plans passed by municipalities for residential buildings, non-residential buildings and additions and alterations by province**

Municipal reporting aggregated to provincial level by year		Residential buildings		Non-residential buildings			Additions and alterations			Building plans passed by municipalities	
		Total square metres	Total value R'000	Number of buildings	Total square metres	Total value R'000	Number of plans	Total square metres	Total value R'000	Total square metres	Total value R'000
Western Cape	2020	1 592 979	11 365 754	333	663 793	4 972 093	10 833	906 441	7 113 969	3 163 213	23 451 816
	2021 *	2 461 171	17 751 051	429	553 241	3 858 538	12 953	1 140 680	8 858 268	4 155 092	30 467 857
	2022	2 795 835	20 946 921	504	641 698	4 596 001	13 067	1 385 065	11 450 392	4 822 598	36 993 314
Eastern Cape	2020	256 239	1 817 731	47	124 384	833 393	2 551	194 462	1 403 258	575 085	4 054 382
	2021	564 170	3 809 135	105	252 190	1 807 915	3 908	378 669	2 794 874	1 195 029	8 411 924
	2022	480 726	3 753 395	88	109 018	819 919	3 500	351 861	2 762 512	941 605	7 335 826
Northern Cape	2020	81 539	691 062	27	25 272	209 964	355	35 429	303 761	142 240	1 204 787
	2021	61 951	518 556	27	23 020	195 481	495	40 989	358 346	125 960	1 072 383
	2022	56 384	483 582	29	54 871	479 313	559	62 289	552 622	173 544	1 515 517
Free State	2020	137 349	1 041 371	32	37 080	242 198	989	97 654	764 460	272 083	2 048 029
	2021	173 892	1 342 615	39	50 491	330 431	1 118	108 008	807 041	332 391	2 480 087
	2022	162 541	1 344 161	40	58 525	397 231	886	76 281	647 736	297 347	2 389 128
KwaZulu-Natal	2020 *	633 811	6 463 063	119	462 644	3 396 419	2 835	317 014	3 494 419	1 413 469	13 353 901
	2021 *	877 303	9 000 493	184	681 247	4 475 541	4 082	519 562	5 417 962	2 078 112	18 893 996
	2022	944 252	9 714 613	191	595 936	4 371 923	4 029	520 210	5 664 026	2 060 398	19 750 562
North West	2020	284 273	1 531 878	60	110 328	663 390	1 223	123 761	791 687	518 362	2 986 955
	2021 *	378 928	2 461 002	78	185 512	1 155 475	1 605	167 709	1 173 940	732 149	4 790 417
	2022	325 871	2 213 020	97	144 172	913 101	1 233	136 591	1 000 511	606 634	4 126 632
Gauteng	2020	1 772 555	13 925 194	162	543 937	4 204 523	6 453	700 517	5 879 426	3 017 009	24 009 143
	2021 *	2 382 338	21 306 570	181	853 112	6 488 282	9 057	1 002 715	8 835 845	4 238 165	36 630 697
	2022	2 049 092	19 129 465	208	1 062 604	8 695 934	8 574	966 885	9 192 590	4 078 581	37 017 989
Mpumalanga	2020 *	274 790	1 844 107	100	162 177	1 118 045	1 342	111 423	786 465	548 390	3 748 617
	2021	382 778	2 428 799	52	56 019	362 607	2 257	167 622	1 102 767	606 419	3 894 173
	2022	389 216	2 782 248	121	199 604	1 346 873	2 225	214 154	1 511 298	802 974	5 640 419

\*Revised.



**Table 1 – Number, square metres and value of building plans passed by municipalities for residential buildings, non-residential buildings and additions and alterations by province (concluded)**

Municipal reporting aggregated to provincial level by year		Residential buildings		Non-residential buildings			Additions and alterations			Building plans passed by municipalities	
		Total square metres	Total value R'000	Number of buildings	Total square metres	Total value R'000	Number of plans	Total square metres	Total value R'000	Total square metres	Total value R'000
Limpopo	2020	170 469	1 026 681	27	36 954	221 895	408	44 681	299 489	252 104	1 548 065
	2021	270 527	1 679 881	29	29 349	173 771	562	81 841	560 565	381 717	2 414 217
	2022	279 476	1 823 425	51	75 658	487 304	492	53 436	407 299	408 570	2 718 028
South Africa	2020 *	5 204 004	39 706 841	907	2 166 569	15 861 920	26 989	2 531 382	20 836 934	9 901 955	76 405 695
	2021 *	7 553 058	60 298 102	1 124	2 684 181	18 848 041	36 037	3 607 795	29 909 608	13 845 034	109 055 751
	2022	7 483 393	62 190 830	1 329	2 942 086	22 107 599	34 565	3 766 772	33 188 986	14 192 251	117 487 415

\*Revised.

**Table 2 – Number, square metres and value of residential building plans passed by municipalities: dwelling-houses, flats and townhouses and other residential buildings by province**

Municipal reporting aggregated to provincial level by year		Residential buildings										
		Dwelling-houses			Flats and townhouses			Other residential buildings and tourism accommodation <sup>1</sup>			Residential building plans passed by municipalities	
		Number of dwelling-houses	Total square metres	Total value R'000	Number of units	Total square metres	Total value R'000	Number of buildings	Total square metres	Total value R'000	Total square metres	Total value R'000
Western Cape	2020	5 944	982 637	6 598 623	6 204	589 377	4 612 372	38	20 965	154 759	1 592 979	11 365 754
	2021 *	8 903	1 538 195	10 626 307	7 698	812 348	6 287 980	28	110 628	836 764	2 461 171	17 751 051
	2022	10 763	1 908 566	13 661 288	8 402	850 276	6 984 562	85	36 993	301 071	2 795 835	20 946 921
Eastern Cape	2020	1 007	207 573	1 472 735	484	44 814	317 096	2	3 852	27 900	256 239	1 817 731
	2021	4 177	467 235	3 099 613	765	91 068	665 622	9	5 867	43 900	564 170	3 809 135
	2022	2 082	335 089	2 605 555	876	98 716	778 025	3	46 921	369 815	480 726	3 753 395
Northern Cape	2020	218	48 061	400 759	258	27 969	244 845	11	5 509	45 458	81 539	691 062
	2021	279	52 808	439 641	145	9 143	78 915	0	0	0	61 951	518 556
	2022	235	48 357	412 422	4	2 642	22 295	4	5 385	48 865	56 384	483 582
Free State	2020	674	107 007	803 972	293	28 758	226 744	8	1 584	10 655	137 349	1 041 371
	2021	814	145 371	1 101 915	168	23 675	205 138	27	4 846	35 562	173 892	1 342 615
	2022	753	128 785	1 036 320	248	29 521	279 938	6	4 235	27 903	162 541	1 344 161
KwaZulu-Natal	2020	1 102	319 035	3 127 874	2 464	308 710	3 283 482	6	6 066	51 707	633 811	6 463 063
	2021 *	1 442	401 989	4 030 120	4 586	460 677	4 850 873	22	14 637	119 500	877 303	9 000 493
	2022	1 607	444 400	4 477 485	4 267	483 605	5 067 653	7	16 247	169 475	944 252	9 714 613
North West	2020	2 711	255 267	1 341 344	269	25 850	170 153	31	3 156	20 381	284 273	1 531 878
	2021	1 485	317 004	2 070 711	713	60 551	380 991	1	1 373	9 300	378 928	2 461 002
	2022	1 324	286 828	1 971 224	397	25 629	162 699	5	13 414	79 097	325 871	2 213 020
Gauteng	2020	8 225	1 034 327	7 687 101	6 671	736 664	6 228 535	2	1 564	9 558	1 772 555	13 925 194
	2021	9 521	1 551 058	13 095 569	8 636	817 461	8 092 849	5	13 819	118 152	2 382 338	21 306 570
	2022	7 505	1 392 310	12 614 813	7 191	655 708	6 501 847	6	1 074	12 805	2 049 092	19 129 465
Mpumalanga	2020 *	1 089	264 395	1 764 379	21	2 390	13 070	1	8 005	66 658	274 790	1 844 107
	2021	1 486	349 398	2 230 203	207	19 723	119 945	1	13 657	78 651	382 778	2 428 799
	2022	1 458	368 370	2 628 015	103	13 601	104 387	8	7 245	49 846	389 216	2 782 248

<sup>1</sup>Institutions for the disabled, boarding houses, hostels and tourism accommodation e.g. hotels, motels, guest-houses, holiday chalets, bed-and-breakfast accommodation and casinos.

\*Revised.

**Table 2 – Number, square metres and value of residential building plans passed by municipalities: dwelling-houses, flats and townhouses and other residential buildings by province (concluded)**

Municipal reporting aggregated to provincial level by year		Residential buildings										
		Dwelling-houses			Flats and townhouses			Other residential buildings and tourism accommodation <sup>1</sup>			Residential building plans passed by municipalities	
		Number of dwelling-houses	Total square metres	Total value R'000	Number of units	Total square metres	Total value R'000	Number of buildings	Total square metres	Total value R'000	Total square metres	Total value R'000
Limpopo	2020	543	145 890	880 314	410	23 125	137 219	6	1 454	9 148	170 469	1 026 681
	2021	725	214 595	1 331 013	376	51 789	321 999	7	4 143	26 869	270 527	1 679 881
	2022	690	181 144	1 188 026	1 915	93 361	605 217	5	4 971	30 182	279 476	1 823 425
South Africa	2020 *	21 513	3 364 192	24 077 101	17 074	1 787 657	15 233 516	105	52 155	396 224	5 204 004	39 706 841
	2021 *	28 832	5 037 653	38 025 092	23 294	2 346 435	21 004 312	100	168 970	1 268 698	7 553 058	60 298 102
	2022	26 417	5 093 849	40 595 148	23 403	2 253 059	20 506 623	129	136 485	1 089 059	7 483 393	62 190 830

<sup>1</sup>Institutions for the disabled, boarding houses, hostels and tourism accommodation e.g. hotels, motels, guest-houses, holiday chalets, bed-and-breakfast accommodation and casinos.

\*Revised.

**Table 3 – Number, square metres and value of building plans passed by municipalities for dwelling-houses by size of dwelling-house and province**

Municipal reporting aggregated to provincial level by year		Size of dwelling-house									Dwelling-house plans passed by municipalities		
		Equal to or smaller than 30 square metres			Larger than 30 square metres and smaller than 80 square metres			Equal to or larger than 80 square metres					
		Number of dwelling-houses	Total square metres	Total value R'000	Number of dwelling-houses	Total square metres	Total value R'000	Number of dwelling-houses	Total square metres	Total value R'000	Number of dwelling-houses	Total square metres	Total value R'000
Western Cape	2020	19	504	2 902	2 529	118 539	701 395	3 396	863 594	5 894 326	5 944	982 637	6 598 623
	2021	142	4 149	29 599	3 369	155 936	900 575	5 392	1 378 110	9 696 133	8 903	1 538 195	10 626 307
	2022	29	803	5 535	4 232	195 071	1 236 696	6 502	1 712 692	12 419 057	10 763	1 908 566	13 661 288
Eastern Cape	2020	0	0	0	185	11 009	67 815	822	196 564	1 404 920	1 007	207 573	1 472 735
	2021	0	0	0	2 830	128 258	583 412	1 347	338 977	2 516 201	4 177	467 235	3 099 613
	2022	0	0	0	886	43 418	270 578	1 196	291 671	2 334 977	2 082	335 089	2 605 555
Northern Cape	2020	0	0	0	22	1 173	10 126	196	46 888	390 633	218	48 061	400 759
	2021	1	24	210	72	4 111	35 735	206	48 673	403 696	279	52 808	439 641
	2022	1	20	188	31	1 891	17 096	203	46 446	395 138	235	48 357	412 422
Free State	2020	0	0	0	239	13 796	108 131	435	93 211	695 841	674	107 007	803 972
	2021	1	28	215	164	9 930	82 084	649	135 413	1 019 616	814	145 371	1 101 915
	2022	0	0	0	204	11 429	103 783	549	117 356	932 537	753	128 785	1 036 320
KwaZulu-Natal	2020	0	0	0	209	12 022	101 129	893	307 013	3 026 745	1 102	319 035	3 127 874
	2021 *	1	29	119	234	13 789	117 119	1 207	388 171	3 912 882	1 442	401 989	4 030 120
	2022	0	0	0	377	22 980	216 619	1 230	421 420	4 260 866	1 607	444 400	4 477 485
North West	2020	0	0	0	2 031	83 579	260 402	680	171 688	1 080 942	2 711	255 267	1 341 344
	2021	4	92	576	133	7 470	45 234	1 348	309 442	2 024 901	1 485	317 004	2 070 711
	2022	5	138	995	278	12 358	61 517	1 041	274 332	1 908 712	1 324	286 828	1 971 224
Gauteng	2020	1	28	98	5 651	279 328	1 323 420	2 573	754 971	6 363 583	8 225	1 034 327	7 687 101
	2021	0	0	0	5 410	285 784	1 883 121	4 111	1 265 274	11 212 448	9 521	1 551 058	13 095 569
	2022	4	83	561	3 672	211 034	1 564 818	3 829	1 181 193	11 049 434	7 505	1 392 310	12 614 813
Mpumalanga	2020 *	0	0	0	300	16 843	92 302	789	247 552	1 672 077	1 089	264 395	1 764 379
	2021	0	0	0	165	9 327	54 260	1 321	340 071	2 175 943	1 486	349 398	2 230 203
	2022	0	0	0	356	21 949	162 908	1 102	346 421	2 465 107	1 458	368 370	2 628 015

\*Revised.

**Table 3 – Number, square metres and value of building plans passed by municipalities for dwelling-houses by size of dwelling-house and province (concluded)**

Municipal reporting aggregated to provincial level by year		Size of dwelling-house									Dwelling-house plans passed by municipalities		
		Equal to or smaller than 30 square metres			Larger than 30 square metres and smaller than 80 square metres			Equal to or larger than 80 square metres					
		Number of dwelling-houses	Total square metres	Total value R'000	Number of dwelling-houses	Total square metres	Total value R'000	Number of dwelling-houses	Total square metres	Total value R'000	Number of dwelling-houses	Total square metres	Total value R'000
Limpopo	2020	0	0	0	143	8 634	51 829	400	137 256	828 485	543	145 890	880 314
	2021	4	89	685	83	5 375	32 958	638	209 131	1 297 370	725	214 595	1 331 013
	2022	2	58	359	61	4 038	26 211	627	177 048	1 161 456	690	181 144	1 188 026
South Africa	2020 *	20	532	3 000	11 309	544 923	2 716 549	10 184	2 818 737	21 357 552	21 513	3 364 192	24 077 101
	2021 *	153	4 411	31 404	12 460	619 980	3 734 498	16 219	4 413 262	34 259 190	28 832	5 037 653	38 025 092
	2022	41	1 102	7 638	10 097	524 168	3 660 226	16 279	4 568 579	36 927 284	26 417	5 093 849	40 595 148

\*Revised.

**Table 4 – Number, square metres and value of building plans passed by municipalities for flats and townhouses by province**

Municipal reporting aggregated to provincial level by year		Flats			Townhouses			Building plans passed for flats and townhouses by municipalities		
		Number of units	Total square metres	Total value R'000	Number of units	Total square metres	Total value R'000	Number of units	Total square metres	Total value R'000
Western Cape	2020	5 367	415 197	3 293 888	837	174 180	1 318 484	6 204	589 377	4 612 372
	2021	5 378	403 646	3 145 947	2 320	408 702	3 142 033	7 698	812 348	6 287 980
	2022	6 748	498 059	4 127 229	1 654	352 217	2 857 333	8 402	850 276	6 984 562
Eastern Cape	2020	228	16 926	119 693	256	27 888	197 403	484	44 814	317 096
	2021	450	34 231	239 490	315	56 837	426 132	765	91 068	665 622
	2022	311	21 223	160 711	565	77 493	617 314	876	98 716	778 025
Northern Cape	2020	10	641	5 513	248	27 328	239 332	258	27 969	244 845
	2021	20	1 277	10 983	125	7 866	67 932	145	9 143	78 915
	2022	0	0	0	4	2 642	22 295	4	2 642	22 295
Free State	2020	91	6 444	46 719	202	22 314	180 025	293	28 758	226 744
	2021	58	3 020	24 095	110	20 655	181 043	168	23 675	205 138
	2022	31	1 784	16 270	217	27 737	263 668	248	29 521	279 938
KwaZulu-Natal	2020	1 978	207 007	2 407 504	486	101 703	875 978	2 464	308 710	3 283 482
	2021	3 978	348 681	3 839 721	608	111 996	1 011 152	4 586	460 677	4 850 873
	2022	3 139	259 280	3 104 311	1 128	224 325	1 963 342	4 267	483 605	5 067 653
North West	2020	206	20 132	130 368	63	5 718	39 785	269	25 850	170 153
	2021	421	25 451	149 818	292	35 100	231 173	713	60 551	380 991
	2022	345	17 869	106 387	52	7 760	56 312	397	25 629	162 699
Gauteng	2020	815	56 365	626 567	5 856	680 299	5 601 968	6 671	736 664	6 228 535
	2021	2 985	239 938	2 604 767	5 651	577 523	5 488 082	8 636	817 461	8 092 849
	2022	1 677	100 221	1 105 755	5 514	555 487	5 396 092	7 191	655 708	6 501 847
Mpumalanga	2020	20	2 171	11 353	1	219	1 717	21	2 390	13 070
	2021	180	16 292	100 954	27	3 431	18 991	207	19 723	119 945
	2022	64	5 815	50 826	39	7 786	53 561	103	13 601	104 387

**Table 4 – Number, square metres and value of building plans passed by municipalities for flats and townhouses by province (concluded)**

Municipal reporting aggregated to provincial level by year		Flats			Townhouses			Building plans passed for flats and townhouses by municipalities		
		Number of units	Total square metres	Total value R'000	Number of units	Total square metres	Total value R'000	Number of units	Total square metres	Total value R'000
Limpopo	2020	12	900	5 640	398	22 225	131 579	410	23 125	137 219
	2021	46	3 133	19 057	330	48 656	302 942	376	51 789	321 999
	2022	48	5 533	38 686	1 867	87 828	566 531	1 915	93 361	605 217
South Africa	2020	8 727	725 783	6 647 245	8 347	1 061 874	8 586 271	17 074	1 787 657	15 233 516
	2021	13 516	1 075 669	10 134 832	9 778	1 270 766	10 869 480	23 294	2 346 435	21 004 312
	2022	12 363	909 784	8 710 175	11 040	1 343 275	11 796 448	23 403	2 253 059	20 506 623

**Table 5 – Number, square metres and value of building plans passed by municipalities for other residential buildings by province**

Municipal reporting aggregated to provincial level by year		Other residential buildings								
		Tourism accommodation and casinos <sup>1</sup>			Other residential buildings excluding tourism accommodation <sup>2</sup>			Building plans passed by municipalities for other residential buildings		
		Number of buildings	Total square metres	Total value R'000	Number of buildings	Total square metres	Total value R'000	Number of buildings	Total square metres	Total value R'000
Western Cape	2020	13	5 945	46 555	25	15 020	108 204	38	20 965	154 759
	2021 *	5	41 432	311 824	23	69 196	524 940	28	110 628	836 764
	2022	8	20 774	182 836	77	16 219	118 235	85	36 993	301 071
Eastern Cape	2020	2	3 852	27 900	0	0	0	2	3 852	27 900
	2021	5	395	2 275	4	5 472	41 625	9	5 867	43 900
	2022	1	25 640	211 453	2	21 281	158 362	3	46 921	369 815
Northern Cape	2020	11	5 509	45 458	0	0	0	11	5 509	45 458
	2021	0	0	0	0	0	0	0	0	0
	2022	1	2 811	24 636	3	2 574	24 229	4	5 385	48 865
Free State	2020	0	0	0	8	1 584	10 655	8	1 584	10 655
	2021	3	1 577	13 508	24	3 269	22 054	27	4 846	35 562
	2022	1	1 197	8 884	5	3 038	19 019	6	4 235	27 903
KwaZulu-Natal	2020	3	5 531	47 629	3	535	4 078	6	6 066	51 707
	2021	9	8 257	75 987	13	6 380	43 513	22	14 637	119 500
	2022	2	2 650	44 165	5	13 597	125 310	7	16 247	169 475
North West	2020	30	2 075	13 400	1	1 081	6 981	31	3 156	20 381
	2021	0	0	0	1	1 373	9 300	1	1 373	9 300
	2022	1	12 391	71 868	4	1 023	7 229	5	13 414	79 097
Gauteng	2020	0	0	0	2	1 564	9 558	2	1 564	9 558
	2021	2	5 402	43 458	3	8 417	74 694	5	13 819	118 152
	2022	0	0	0	6	1 074	12 805	6	1 074	12 805
Mpumalanga	2020	0	0	0	1	8 005	66 658	1	8 005	66 658
	2021	1	13 657	78 651	0	0	0	1	13 657	78 651
	2022	7	4 895	28 830	1	2 350	21 016	8	7 245	49 846

<sup>1</sup>Hotels, motels, guest-houses, holiday chalets, bed-and-breakfast accommodation and casinos.

<sup>2</sup>Institutions for the disabled, boarding houses and hostels.

\*Revised.



**Table 5 – Number, square metres and value of building plans passed by municipalities for other residential buildings by province (concluded)**

Municipal reporting aggregated to provincial level by year		Other residential buildings								
		Tourism accommodation and casinos <sup>1</sup>			Other residential buildings excluding tourism accommodation <sup>2</sup>			Building plans passed by municipalities for other residential buildings		
		Number of buildings	Total square metres	Total value R'000	Number of buildings	Total square metres	Total value R'000	Number of buildings	Total square metres	Total value R'000
Limpopo	2020	5	1 332	8 364	1	122	784	6	1 454	9 148
	2021	1	747	4 805	6	3 396	22 064	7	4 143	26 869
	2022	1	2 022	13 812	4	2 949	16 370	5	4 971	30 182
South Africa	2020	64	24 244	189 306	41	27 911	206 918	105	52 155	396 224
	2021 *	26	71 467	530 508	74	97 503	738 190	100	168 970	1 268 698
	2022	22	72 380	586 484	107	64 105	502 575	129	136 485	1 089 059

<sup>1</sup>Hotels, motels, guest-houses, holiday chalets, bed-and-breakfast accommodation and casinos.

<sup>2</sup>Institutions for the disabled, boarding houses and hostels.

\*Revised.

**Table 6.1 – Number, square metres and value of non-residential building plans passed by municipalities: office and banking space, shopping space and industrial and warehouse space**

Municipal reporting aggregated to provincial level by year		Non-residential buildings								
		Office and banking space			Shopping space			Industrial and warehouse space		
		Number of buildings	Total square metres	Total value R'000	Number of buildings	Total square metres	Total value R'000	Number of buildings	Total square metres	Total value R'000
Western Cape	2020	48	104 701	860 088	51	140 331	1 136 166	117	279 108	1 960 125
	2021	35	58 759	430 115	42	80 621	608 544	128	265 386	1 802 581
	2022	49	59 051	448 116	55	77 599	597 634	159	310 767	2 113 635
Eastern Cape	2020	7	10 426	67 172	5	34 226	236 821	24	60 767	392 356
	2021	9	12 472	81 414	17	66 943	481 930	62	155 578	1 119 853
	2022	5	2 832	22 634	28	22 082	164 747	31	54 362	410 325
Northern Cape	2020	6	2 735	21 668	3	1 609	9 709	14	12 851	107 993
	2021	3	2 167	18 690	2	3 243	28 377	17	15 273	128 173
	2022	12	12 860	118 176	3	920	8 326	6	27 610	233 231
Free State	2020	4	5 965	47 988	3	887	6 378	19	26 411	157 689
	2021	1	1 047	9 379	11	13 473	101 444	14	11 518	72 761
	2022	4	2 220	13 970	9	6 565	45 219	22	34 666	235 082
KwaZulu-Natal	2020	9	8 846	84 353	20	132 024	1 106 084	53	282 415	1 849 238
	2021	14	26 636	245 701	34	41 578	406 983	105	580 964	3 564 808
	2022	24	19 863	195 914	43	139 043	1 388 689	99	416 427	2 615 735
North West	2020	4	5 998	39 406	21	72 601	433 373	22	24 705	146 619
	2021 *	5	1 547	9 237	31	143 209	890 565	12	18 316	116 042
	2022	8	3 299	19 853	44	47 311	300 984	13	50 754	306 166
Gauteng	2020	26	34 200	353 425	23	125 363	1 266 004	77	280 034	1 715 151
	2021 *	24	167 045	1 707 040	31	138 387	1 420 602	84	498 441	2 951 734
	2022	27	131 494	1 653 953	34	145 458	1 754 202	100	700 990	4 536 211
Mpumalanga	2020 *	15	50 683	340 614	8	20 308	147 120	65	64 621	443 710
	2021	3	1 246	9 438	14	12 623	80 801	25	36 345	238 960
	2022	9	4 706	30 758	16	43 484	279 200	75	124 166	870 207

\*Revised.

**Table 6.1 – Number, square metres and value of non-residential building plans passed by municipalities: office and banking space, shopping space and industrial and warehouse space (concluded)**

Municipal reporting aggregated to provincial level by year		Non-residential buildings								
		Office and banking space			Shopping space			Industrial and warehouse space		
		Number of buildings	Total square metres	Total value R'000	Number of buildings	Total square metres	Total value R'000	Number of buildings	Total square metres	Total value R'000
Limpopo	2020	1	623	3 592	4	4 213	26 168	9	27 923	164 689
	2021	2	1 443	8 694	5	2 700	17 256	16	23 051	135 429
	2022	8	3 687	24 236	13	30 720	196 071	22	37 506	241 909
South Africa	2020 *	120	224 177	1 818 306	138	531 562	4 367 823	400	1 058 835	6 937 570
	2021 *	96	272 362	2 519 708	187	502 777	4 036 502	463	1 604 872	10 130 341
	2022	146	240 012	2 527 610	245	513 182	4 735 072	527	1 757 248	11 562 501

\*Revised.

**Table 6.2 – Number, square metres and value of non-residential building plans passed by municipalities: schools, nursery schools, crèches, hospitals, churches, sport clubs, recreation clubs and all other non-residential space**

Municipal reporting aggregated to provincial level by year		Non-residential buildings											
		Schools, nursery schools, crèches and hospitals			Churches, sport and recreation clubs			All other non-residential space			Non-residential building plans passed by municipalities <sup>1</sup>		
		Number of buildings	Total square metres	Total value R'000	Number of buildings	Total square metres	Total value R'000	Number of buildings	Total square metres	Total value R'000	Number of buildings	Total square metres	Total value R'000
Western Cape	2020	20	53 154	390 038	26	14 945	100 837	71	71 554	524 839	333	663 793	4 972 093
	2021 *	24	48 565	330 651	35	33 045	226 878	165	66 865	459 769	429	553 241	3 858 538
	2022	26	36 716	258 489	22	31 410	229 219	193	126 155	948 908	504	641 698	4 596 001
Eastern Cape	2020	3	16 871	122 457	2	923	5 993	6	1 171	8 594	47	124 384	833 393
	2021	7	8 400	61 132	5	7 155	51 402	5	1 642	12 184	105	252 190	1 807 915
	2022	8	19 390	143 782	10	7 668	58 257	6	2 684	20 174	88	109 018	819 919
Northern Cape	2020	2	7 403	64 906	2	674	5 688	0	0	0	27	25 272	209 964
	2021	1	361	2 925	3	1 941	17 010	1	35	306	27	23 020	195 481
	2022	3	2 499	22 852	3	2 877	25 696	2	8 105	71 032	29	54 871	479 313
Free State	2020	3	1 259	10 620	2	398	2 087	1	2 160	17 436	32	37 080	242 198
	2021	4	14 780	90 670	6	9 014	50 942	3	659	5 235	39	50 491	330 431
	2022	3	12 786	83 077	0	0	0	2	2 288	19 883	40	58 525	397 231
KwaZulu-Natal	2020 *	14	14 790	118 175	17	23 763	229 973	6	806	8 596	119	462 644	3 396 419
	2021 *	15	20 076	168 548	11	10 752	76 506	5	1 241	12 995	184	681 247	4 475 541
	2022	13	11 159	88 158	8	7 995	67 953	4	1 449	15 474	191	595 936	4 371 923
North West	2020	1	661	3 822	6	3 770	22 941	6	2 593	17 229	60	110 328	663 390
	2021 *	7	7 761	44 885	7	8 400	56 276	16	6 279	38 470	78	185 512	1 155 475
	2022	9	8 420	59 030	5	3 562	20 512	18	30 826	206 556	97	144 172	913 101
Gauteng	2020	17	69 876	620 201	16	33 139	234 926	3	1 325	14 816	162	543 937	4 204 523
	2021 *	19	27 435	217 462	6	15 641	141 275	17	6 163	50 169	181	853 112	6 488 282
	2022	26	45 008	408 214	12	14 089	144 685	9	25 565	198 669	208	1 062 604	8 695 934
Mpumalanga	2020 *	6	20 384	153 081	0	0	0	6	6 181	33 520	100	162 177	1 118 045
	2021	4	2 088	12 621	3	2 343	12 763	3	1 374	8 024	52	56 019	362 607
	2022	7	11 313	67 765	10	7 666	46 931	4	8 269	52 012	121	199 604	1 346 873

<sup>1</sup>Office and banking space, shopping space, industrial and warehouse space, schools, nursery schools, crèches, hospitals, churches, sport clubs, recreation clubs and all other non-residential space (Tables 6.1 and 6.2).

\*Revised.

**Table 6.2 – Number, square metres and value of non-residential building plans passed by municipalities: schools, nursery schools, crèches, hospitals, churches, sport clubs, recreation clubs and all other non-residential space (concluded)**

Municipal reporting aggregated to provincial level by year		Non-residential buildings											
		Schools, nursery schools, crèches and hospitals			Churches, sport and recreation clubs			All other non-residential space			Non-residential building plans passed by municipalities <sup>1</sup>		
		Number of buildings	Total square metres	Total value R'000	Number of buildings	Total square metres	Total value R'000	Number of buildings	Total square metres	Total value R'000	Number of buildings	Total square metres	Total value R'000
Limpopo	2020	1	874	5 039	5	2 406	16 777	7	915	5 630	27	36 954	221 895
	2021	2	980	6 176	1	353	1 817	3	822	4 399	29	29 349	173 771
	2022	1	220	1 464	3	1 987	13 318	4	1 538	10 306	51	75 658	487 304
South Africa	2020 *	67	185 272	1 488 339	76	80 018	619 222	106	86 705	630 660	907	2 166 569	15 861 920
	2021 *	83	130 446	935 070	77	88 644	634 869	218	85 080	591 551	1 124	2 684 181	18 848 041
	2022	96	147 511	1 132 831	73	77 254	606 571	242	206 879	1 543 014	1 329	2 942 086	22 107 599

<sup>1</sup>Office and banking space, shopping space, industrial and warehouse space, schools, nursery schools, crèches, hospitals, churches, sport clubs, recreation clubs and all other non-residential space (Tables 6.1 and 6.2).

\*Revised.

**Table 7 – Number, square metres and value of building plans passed by municipalities for additions and alterations by province**

Municipal reporting aggregated to provincial level by year		Additions and alterations												
		Dwelling-houses			Other residential buildings			Non-residential buildings			Internal alterations	Building plans passed for additions and alterations by municipalities		
		Number of plans	Total square metres	Total value R'000	Number of plans	Total square metres	Total value R'000	Number of plans	Total square metres	Total value R'000	Total value R'000	Number of plans	Total square metres	Total value R'000
Western Cape	2020	9 336	629 629	4 179 060	847	63 706	491 514	650	213 106	1 646 116	797 279	10 833	906 441	7 113 969
	2021 *	11 362	867 735	5 932 744	983	70 433	541 678	608	202 512	1 580 555	803 291	12 953	1 140 680	8 858 268
	2022	11 227	1 067 617	7 683 405	1 064	68 496	543 278	776	248 952	2 086 692	1 137 017	13 067	1 385 065	11 450 392
Eastern Cape	2020	2 373	159 417	1 119 381	24	915	6 510	154	34 130	239 498	37 869	2 551	194 462	1 403 258
	2021	3 559	268 642	1 952 931	53	4 058	29 313	296	105 969	778 645	33 985	3 908	378 669	2 794 874
	2022	3 097	264 818	2 054 368	41	1 393	10 351	362	85 650	668 789	29 004	3 500	351 861	2 762 512
Northern Cape	2020	336	31 118	262 785	1	13	114	18	4 298	36 508	4 354	355	35 429	303 761
	2021	471	37 727	311 315	2	482	4 163	22	2 780	23 392	19 476	495	40 989	358 346
	2022	547	54 906	473 229	1	558	4 890	11	6 825	63 280	11 223	559	62 289	552 622
Free State	2020	945	80 972	602 181	6	783	6 339	38	15 899	117 817	38 123	989	97 654	764 460
	2021	1 074	92 172	679 132	7	245	1 943	37	15 591	112 411	13 555	1 118	108 008	807 041
	2022	866	72 683	589 640	6	200	1 488	14	3 398	25 928	30 680	886	76 281	647 736
KwaZulu-Natal	2020	2 432	215 738	2 184 043	157	18 664	199 901	246	82 612	800 291	310 184	2 835	317 014	3 494 419
	2021	3 543	364 622	3 703 202	202	14 144	151 024	337	140 796	1 375 495	188 241	4 082	519 562	5 417 962
	2022	3 498	334 595	3 512 305	187	24 261	256 347	344	161 354	1 639 849	255 525	4 029	520 210	5 664 026
North West	2020	1 173	96 455	583 068	4	2 921	15 754	46	24 385	150 311	42 554	1 223	123 761	791 687
	2021	1 521	138 493	878 470	22	4 555	26 584	62	24 661	158 371	110 515	1 605	167 709	1 173 940
	2022	1 172	108 561	715 761	10	1 865	11 680	51	26 165	173 533	99 537	1 233	136 591	1 000 511
Gauteng	2020	6 080	566 302	4 796 097	231	35 126	237 547	142	99 089	751 276	94 506	6 453	700 517	5 879 426
	2021	8 783	865 406	7 710 830	62	13 257	139 848	212	124 052	852 367	132 800	9 057	1 002 715	8 835 845
	2022	8 202	798 965	7 580 648	139	12 762	131 559	233	155 158	1 296 051	184 332	8 574	966 885	9 192 590
Mpumalanga	2020 *	1 301	101 104	619 468	3	530	4 108	38	9 789	65 792	97 097	1 342	111 423	786 465
	2021	2 218	159 494	993 740	2	201	1 095	37	7 927	47 605	60 327	2 257	167 622	1 102 767
	2022	2 135	185 559	1 240 018	5	1 113	6 472	85	27 482	189 165	75 643	2 225	214 154	1 511 298

\*Revised.

**Table 7 – Number, square metres and value of building plans passed by municipalities for additions and alterations by province (concluded)**

Municipal reporting aggregated to provincial level by year		Additions and alterations												
		Dwelling-houses			Other residential buildings			Non-residential buildings			Internal alterations	Building plans passed for additions and alterations by municipalities		
		Number of plans	Total square metres	Total value R'000	Number of plans	Total square metres	Total value R'000	Number of plans	Total square metres	Total value R'000	Total value R'000	Number of plans	Total square metres	Total value R'000
Limpopo	2020	380	38 283	231 412	9	1 144	6 454	19	5 254	30 673	30 950	408	44 681	299 489
	2021	524	57 724	359 572	14	4 750	30 586	24	19 367	115 081	55 326	562	81 841	560 565
	2022	457	46 141	301 859	21	3 474	23 706	14	3 821	25 448	56 286	492	53 436	407 299
South Africa	2020 *	24 356	1 919 018	14 577 495	1 282	123 802	968 241	1 351	488 562	3 838 282	1 452 916	26 989	2 531 382	20 836 934
	2021 *	33 055	2 852 015	22 521 936	1 347	112 125	926 234	1 635	643 655	5 043 922	1 417 516	36 037	3 607 795	29 909 608
	2022	31 201	2 933 845	24 151 233	1 474	114 122	989 771	1 890	718 805	6 168 735	1 879 247	34 565	3 766 772	33 188 986

\*Revised.

**Part 2**  
**Municipal reporting of buildings completed**  
**aggregated to provincial level**



**Table 8 – Number, square metres and value of residential, non-residential and additions and alterations reported as completed by province**

Municipal reporting aggregated to provincial level by year		Residential buildings		Non-residential buildings			Additions and alterations			Buildings reported as completed to municipalities	
		Total square metres	Total value R'000	Number of buildings	Total square metres	Total value R'000	Number of plans	Total square metres	Total value R'000	Total square metres	Total value R'000
Western Cape	2020	1 113 169	8 013 370	161	404 038	2 959 416	5 976	616 278	5 410 782	2 133 485	16 383 568
	2021	1 541 173	10 981 121	257	574 551	4 223 793	8 789	874 562	7 191 113	2 990 286	22 396 027
	2022	1 811 313	13 055 379	306	564 152	4 123 871	13 273	1 251 633	9 909 827	3 627 098	27 089 077
Eastern Cape	2020	90 492	640 512	19	87 420	581 217	1 163	97 532	691 839	275 444	1 913 568
	2021	163 710	1 213 225	33	150 939	1 083 229	1 399	120 033	918 108	434 682	3 214 562
	2022	169 408	1 343 392	34	80 781	630 293	1 082	125 670	1 013 039	375 859	2 986 724
Northern Cape	2020	30 981	261 692	21	20 413	171 249	300	28 298	244 386	79 692	677 327
	2021	34 272	288 503	12	6 867	57 201	333	36 729	310 727	77 868	656 431
	2022	22 350	194 245	12	24 776	205 927	433	41 627	367 168	88 753	767 340
Free State	2020	41 675	314 297	12	25 748	204 935	126	12 533	99 120	79 956	618 352
	2021	56 999	447 099	12	11 706	91 790	235	20 294	137 445	88 999	676 334
	2022	45 116	363 199	6	3 607	27 521	296	23 163	166 368	71 886	557 088
KwaZulu-Natal	2020	352 098	3 727 797	71	480 266	3 098 939	977	114 543	1 319 329	946 907	8 146 065
	2021	360 066	3 724 992	125	256 830	2 056 216	1 239	170 917	1 964 054	787 813	7 745 262
	2022	503 970	5 420 134	93	394 037	2 817 592	1 086	126 062	1 533 192	1 024 069	9 770 918
North West	2020	153 470	1 001 986	22	36 246	228 759	233	27 827	204 936	217 543	1 435 681
	2021	181 433	1 188 744	24	137 350	822 565	312	40 788	299 236	359 571	2 310 545
	2022	211 074	1 441 953	42	88 457	618 438	206	21 082	162 600	320 613	2 222 991
Gauteng	2020	1 275 440	10 419 070	121	696 376	5 561 666	1 427	216 367	1 844 269	2 188 183	17 825 005
	2021	1 539 522	13 578 793	110	602 787	4 400 870	1 948	295 502	2 434 415	2 437 811	20 414 078
	2022	1 485 659	13 756 499	114	799 143	5 900 973	1 847	283 429	2 516 764	2 568 231	22 174 236
Mpumalanga	2020 *	96 568	663 492	21	47 833	358 728	298	24 938	184 984	169 339	1 207 204
	2021	104 988	793 890	18	29 203	193 191	172	16 162	155 407	150 353	1 142 488
	2022	117 979	868 377	14	24 551	200 410	143	12 827	109 142	155 357	1 177 929

\*Revised.

**Table 8 – Number, square metres and value of residential, non-residential and additions and alterations reported as completed by province (concluded)**

Municipal reporting aggregated to provincial level by year		Residential buildings		Non-residential buildings			Additions and alterations			Buildings reported as completed to municipalities	
		Total square metres	Total value R'000	Number of buildings	Total square metres	Total value R'000	Number of plans	Total square metres	Total value R'000	Total square metres	Total value R'000
Limpopo	2020	88 583	528 188	19	50 264	298 014	69	10 019	68 518	148 866	894 720
	2021	103 916	642 534	14	8 660	51 762	86	8 627	71 047	121 203	765 343
	2022	112 156	746 359	21	34 501	226 607	85	13 708	100 731	160 365	1 073 697
South Africa	2020 *	3 242 476	25 570 404	467	1 848 604	13 462 923	10 569	1 148 335	10 068 163	6 239 415	49 101 490
	2021	4 086 079	32 858 901	605	1 778 893	12 980 617	14 513	1 583 614	13 481 552	7 448 586	59 321 070
	2022	4 479 025	37 189 537	642	2 014 005	14 751 632	18 451	1 899 201	15 878 831	8 392 231	67 820 000

\*Revised.

**Table 9 – Number, square metres and value of residential buildings reported as completed to municipalities: dwelling-houses, flats and townhouses and other residential buildings by province**

Municipal reporting aggregated to provincial level by year		Residential buildings										
		Dwelling-houses			Flats and townhouses			Other residential buildings and tourism accommodation <sup>1</sup>			Residential buildings reported as completed to municipalities	
		Number of dwelling-houses	Total square metres	Total value R'000	Number of units	Total square metres	Total value R'000	Number of buildings	Total square metres	Total value R'000	Total square metres	Total value R'000
Western Cape	2020	4 610	669 216	4 450 852	3 968	431 812	3 474 162	10	12 141	88 356	1 113 169	8 013 370
	2021	6 610	866 004	5 732 065	7 890	649 352	5 046 123	22	25 817	202 933	1 541 173	10 981 121
	2022	7 433	1 119 292	7 591 997	6 797	646 901	5 135 608	30	45 120	327 774	1 811 313	13 055 379
Eastern Cape	2020	476	80 437	570 726	103	10 055	69 786	0	0	0	90 492	640 512
	2021	667	134 614	997 772	281	29 070	215 253	1	26	200	163 710	1 213 225
	2022	906	144 052	1 145 559	221	20 059	157 157	1	5 297	40 676	169 408	1 343 392
Northern Cape	2020	127	29 224	246 832	18	1 257	10 560	1	500	4 300	30 981	261 692
	2021	167	31 493	264 732	17	1 662	13 982	1	1 117	9 789	34 272	288 503
	2022	100	20 779	181 515	20	1 571	12 730	0	0	0	22 350	194 245
Free State	2020	216	31 362	231 051	36	10 313	83 246	0	0	0	41 675	314 297
	2021	446	52 382	408 764	35	4 012	33 393	5	605	4 942	56 999	447 099
	2022	318	43 124	351 396	2	355	2 044	5	1 637	9 759	45 116	363 199
KwaZulu-Natal	2020	691	162 448	1 717 932	1 489	173 764	1 832 094	6	15 886	177 771	352 098	3 727 797
	2021	701	194 968	2 034 877	1 108	141 030	1 430 466	3	24 068	259 649	360 066	3 724 992
	2022	771	248 703	2 609 025	2 315	234 754	2 585 736	2	20 513	225 373	503 970	5 420 134
North West	2020	578	112 112	721 094	412	38 780	264 269	3	2 578	16 623	153 470	1 001 986
	2021	871	156 329	1 023 179	217	25 104	165 565	0	0	0	181 433	1 188 744
	2022	1 117	188 962	1 302 413	194	20 069	126 036	10	2 043	13 504	211 074	1 441 953
Gauteng	2020	6 477	753 664	5 757 041	3 896	516 550	4 610 428	3	5 226	51 601	1 275 440	10 419 070
	2021	6 682	940 682	7 925 665	5 785	597 429	5 639 712	3	1 411	13 416	1 539 522	13 578 793
	2022	7 789	1 041 201	9 412 417	4 082	441 192	4 316 127	2	3 266	27 955	1 485 659	13 756 499
Mpumalanga	2020 *	516	89 728	618 261	47	6 840	45 231	0	0	0	96 568	663 492
	2021	526	94 125	708 280	34	2 858	18 952	1	8 005	66 658	104 988	793 890
	2022	706	117 470	865 411	4	509	2 966	0	0	0	117 979	868 377

<sup>1</sup>Institutions for the disabled, boarding houses, hostels and tourism accommodation e.g. hotels, motels, guest-houses, holiday chalets, bed-and-breakfast accommodation and casinos.

\*Revised.

**Table 9 – Number, square metres and value of residential buildings reported as completed to municipalities: dwelling-houses, flats and townhouses and other residential buildings by province (concluded)**

Municipal reporting aggregated to provincial level by year		Residential buildings										
		Dwelling-houses			Flats and townhouses			Other residential buildings and tourism accommodation <sup>1</sup>			Residential buildings reported as completed to municipalities	
		Number of dwelling-houses	Total square metres	Total value R'000	Number of units	Total square metres	Total value R'000	Number of buildings	Total square metres	Total value R'000	Total square metres	Total value R'000
Limpopo	2020	301	70 940	420 606	216	16 883	103 003	1	760	4 579	88 583	528 188
	2021	406	88 631	546 868	154	15 145	94 766	1	140	900	103 916	642 534
	2022	399	98 663	655 260	118	13 278	89 630	1	215	1 469	112 156	746 359
South Africa	2020 *	13 992	1 999 131	14 734 395	10 185	1 206 254	10 492 779	24	37 091	343 230	3 242 476	25 570 404
	2021	17 076	2 559 228	19 642 202	15 521	1 465 662	12 658 212	37	61 189	558 487	4 086 079	32 858 901
	2022	19 539	3 022 246	24 114 993	13 753	1 378 688	12 428 034	51	78 091	646 510	4 479 025	37 189 537

<sup>1</sup>Institutions for the disabled, boarding houses, hostels and tourism accommodation e.g. hotels, motels, guest-houses, holiday chalets, bed-and-breakfast accommodation and casinos.

\*Revised.

**Table 10 – Number, square metres and value of dwelling-houses reported as completed to municipalities by size of dwelling-house by province**

Municipal reporting aggregated to provincial level by year		Size of dwelling-house									Dwelling-houses reported as completed to municipalities		
		Equal to or smaller than 30 square metres			Larger than 30 square metres and smaller than 80 square metres			Equal to or larger than 80 square metres					
		Number of dwelling-houses	Total square metres	Total value R'000	Number of dwelling-houses	Total square metres	Total value R'000	Number of dwelling-houses	Total square metres	Total value R'000	Number of dwelling-houses	Total square metres	Total value R'000
Western Cape	2020	25	563	1 867	2 251	102 760	576 830	2 334	565 893	3 872 155	4 610	669 216	4 450 852
	2021	8	210	1 151	3 657	164 352	936 349	2 945	701 442	4 794 565	6 610	866 004	5 732 065
	2022	13	321	1 851	3 411	149 664	866 149	4 009	969 307	6 723 997	7 433	1 119 292	7 591 997
Eastern Cape	2020	0	0	0	106	6 211	39 290	370	74 226	531 436	476	80 437	570 726
	2021	0	0	0	167	9 312	62 422	500	125 302	935 350	667	134 614	997 772
	2022	0	0	0	339	20 124	147 007	567	123 928	998 552	906	144 052	1 145 559
Northern Cape	2020	0	0	0	5	308	2 650	122	28 916	244 182	127	29 224	246 832
	2021	0	0	0	37	2 449	21 265	130	29 044	243 467	167	31 493	264 732
	2022	0	0	0	16	1 059	9 310	84	19 720	172 205	100	20 779	181 515
Free State	2020	0	0	0	109	6 595	53 338	107	24 767	177 713	216	31 362	231 051
	2021	0	0	0	241	14 579	123 155	205	37 803	285 609	446	52 382	408 764
	2022	0	0	0	147	7 977	72 843	171	35 147	278 553	318	43 124	351 396
KwaZulu-Natal	2020	2	57	239	129	7 782	77 987	560	154 609	1 639 706	691	162 448	1 717 932
	2021	1	30	126	85	4 966	48 850	615	189 972	1 985 901	701	194 968	2 034 877
	2022	1	30	357	104	5 861	55 368	666	242 812	2 553 300	771	248 703	2 609 025
North West	2020	0	0	0	104	6 175	35 564	474	105 937	685 530	578	112 112	721 094
	2021	2	49	321	230	13 869	81 620	639	142 411	941 238	871	156 329	1 023 179
	2022	3	60	412	304	18 083	103 386	810	170 819	1 198 615	1 117	188 962	1 302 413
Gauteng	2020	0	0	0	4 529	237 891	1 440 455	1 948	515 773	4 316 586	6 477	753 664	5 757 041
	2021	0	0	0	3 946	215 865	1 511 149	2 736	724 817	6 414 516	6 682	940 682	7 925 665
	2022	0	0	0	4 915	277 088	2 096 208	2 874	764 113	7 316 209	7 789	1 041 201	9 412 417
Mpumalanga	2020 *	0	0	0	178	9 633	50 811	338	80 095	567 450	516	89 728	618 261
	2021	0	0	0	164	9 181	58 086	362	84 944	650 194	526	94 125	708 280
	2022	9	172	1 013	175	10 242	69 523	522	107 056	794 875	706	117 470	865 411

\*Revised.

**Table 10 – Number, square metres and value of dwelling-houses reported as completed to municipalities by size of dwelling-house by province (concluded)**

Municipal reporting aggregated to provincial level by year		Size of dwelling-house									Dwelling-houses reported as completed to municipalities		
		Equal to or smaller than 30 square metres			Larger than 30 square metres and smaller than 80 square metres			Equal to or larger than 80 square metres					
		Number of dwelling-houses	Total square metres	Total value R'000	Number of dwelling-houses	Total square metres	Total value R'000	Number of dwelling-houses	Total square metres	Total value R'000	Number of dwelling-houses	Total square metres	Total value R'000
Limpopo	2020	0	0	0	92	5 309	31 783	209	65 631	388 823	301	70 940	420 606
	2021	0	0	0	123	7 514	47 129	283	81 117	499 739	406	88 631	546 868
	2022	0	0	0	100	6 488	42 949	299	92 175	612 311	399	98 663	655 260
South Africa	2020 *	27	620	2 106	7 503	382 664	2 308 708	6 462	1 615 847	12 423 581	13 992	1 999 131	14 734 395
	2021	11	289	1 598	8 650	442 087	2 890 025	8 415	2 116 852	16 750 579	17 076	2 559 228	19 642 202
	2022	26	583	3 633	9 511	496 586	3 462 743	10 002	2 525 077	20 648 617	19 539	3 022 246	24 114 993

\*Revised.

**Table 11 – Number, square metres and value of flats and townhouses reported as completed to municipalities by province**

Municipal reporting aggregated to provincial level by year		Flats			Townhouses			Flats and townhouses reported as completed to municipalities		
		Number of units	Total square metres	Total value R'000	Number of units	Total square metres	Total value R'000	Number of units	Total square metres	Total value R'000
Western Cape	2020	3 338	302 835	2 471 077	630	128 977	1 003 085	3 968	431 812	3 474 162
	2021	6 519	450 085	3 499 947	1 371	199 267	1 546 176	7 890	649 352	5 046 123
	2022	5 382	424 429	3 356 842	1 415	222 472	1 778 766	6 797	646 901	5 135 608
Eastern Cape	2020	16	970	7 013	87	9 085	62 773	103	10 055	69 786
	2021	92	4 814	33 941	189	24 256	181 312	281	29 070	215 253
	2022	119	6 233	47 008	102	13 826	110 149	221	20 059	157 157
Northern Cape	2020	0	0	0	18	1 257	10 560	18	1 257	10 560
	2021	0	0	0	17	1 662	13 982	17	1 662	13 982
	2022	18	1 311	10 623	2	260	2 107	20	1 571	12 730
Free State	2020	0	0	0	36	10 313	83 246	36	10 313	83 246
	2021	33	3 640	30 703	2	372	2 690	35	4 012	33 393
	2022	0	0	0	2	355	2 044	2	355	2 044
KwaZulu-Natal	2020	957	103 205	1 173 827	532	70 559	658 267	1 489	173 764	1 832 094
	2021	715	82 450	929 006	393	58 580	501 460	1 108	141 030	1 430 466
	2022	1 992	181 561	2 100 896	323	53 193	484 840	2 315	234 754	2 585 736
North West	2020	315	27 758	188 028	97	11 022	76 241	412	38 780	264 269
	2021	145	13 012	83 812	72	12 092	81 753	217	25 104	165 565
	2022	118	9 242	55 926	76	10 827	70 110	194	20 069	126 036
Gauteng	2020	590	40 715	461 740	3 306	475 835	4 148 688	3 896	516 550	4 610 428
	2021	1 207	91 221	1 058 996	4 578	506 208	4 580 716	5 785	597 429	5 639 712
	2022	911	60 835	656 404	3 171	380 357	3 659 723	4 082	441 192	4 316 127
Mpumalanga	2020	20	3 315	25 993	27	3 525	19 238	47	6 840	45 231
	2021	8	317	2 640	26	2 541	16 312	34	2 858	18 952
	2022	0	0	0	4	509	2 966	4	509	2 966

**Table 11 – Number, square metres and value of flats and townhouses reported as completed to municipalities by province (concluded)**

Municipal reporting aggregated to provincial level by year		Flats			Townhouses			Flats and townhouses reported as completed to municipalities		
		Number of units	Total square metres	Total value R'000	Number of units	Total square metres	Total value R'000	Number of units	Total square metres	Total value R'000
Limpopo	2020	66	3 662	22 949	150	13 221	80 054	216	16 883	103 003
	2021	0	0	0	154	15 145	94 766	154	15 145	94 766
	2022	48	4 032	28 128	70	9 246	61 502	118	13 278	89 630
South Africa	2020	5 302	482 460	4 350 627	4 883	723 794	6 142 152	10 185	1 206 254	10 492 779
	2021	8 719	645 539	5 639 045	6 802	820 123	7 019 167	15 521	1 465 662	12 658 212
	2022	8 588	687 643	6 255 827	5 165	691 045	6 172 207	13 753	1 378 688	12 428 034



**Table 12 – Number, square metres and value of other residential buildings reported as completed to municipalities by province**

Municipal reporting aggregated to provincial level by year		Other residential buildings								
		Tourism accommodation and casinos <sup>1</sup>			Other residential buildings excluding tourism accommodation <sup>2</sup>			Other residential buildings reported as completed to municipalities		
		Number of buildings	Total square metres	Total value R'000	Number of buildings	Total square metres	Total value R'000	Number of buildings	Total square metres	Total value R'000
Western Cape	2020	1	500	3 633	9	11 641	84 723	10	12 141	88 356
	2021	4	3 737	25 576	18	22 080	177 357	22	25 817	202 933
	2022	1	2 069	13 449	29	43 051	314 325	30	45 120	327 774
Eastern Cape	2020	0	0	0	0	0	0	0	0	0
	2021	0	0	0	1	26	200	1	26	200
	2022	0	0	0	1	5 297	40 676	1	5 297	40 676
Northern Cape	2020	1	500	4 300	0	0	0	1	500	4 300
	2021	1	1 117	9 789	0	0	0	1	1 117	9 789
	2022	0	0	0	0	0	0	0	0	0
Free State	2020	0	0	0	0	0	0	0	0	0
	2021	0	0	0	5	605	4 942	5	605	4 942
	2022	0	0	0	5	1 637	9 759	5	1 637	9 759
KwaZulu-Natal	2020	2	3 671	43 685	4	12 215	134 086	6	15 886	177 771
	2021	2	23 862	258 147	1	206	1 502	3	24 068	259 649
	2022	2	20 513	225 373	0	0	0	2	20 513	225 373
North West	2020	1	1 318	7 513	2	1 260	9 110	3	2 578	16 623
	2021	0	0	0	0	0	0	0	0	0
	2022	0	0	0	10	2 043	13 504	10	2 043	13 504
Gauteng	2020	1	3 254	31 694	2	1 972	19 907	3	5 226	51 601
	2021	0	0	0	3	1 411	13 416	3	1 411	13 416
	2022	0	0	0	2	3 266	27 955	2	3 266	27 955
Mpumalanga	2020	0	0	0	0	0	0	0	0	0
	2021	0	0	0	1	8 005	66 658	1	8 005	66 658
	2022	0	0	0	0	0	0	0	0	0

<sup>1</sup>Hotels, motels, guest-houses, chalets, bed-and-breakfast accommodation and casinos.

<sup>2</sup>Institutions for the disabled, boarding houses and hostels.

**Table 12 – Number, square metres and value of other residential buildings reported as completed to municipalities by province (concluded)**

Municipal reporting aggregated to provincial level by year		Other residential buildings								
		Tourism accommodation and casinos <sup>1</sup>			Other residential buildings excluding tourism accommodation <sup>2</sup>			Other residential buildings reported as completed to municipalities		
		Number of buildings	Total square metres	Total value R'000	Number of buildings	Total square metres	Total value R'000	Number of buildings	Total square metres	Total value R'000
Limpopo	2020	1	760	4 579	0	0	0	1	760	4 579
	2021	0	0	0	1	140	900	1	140	900
	2022	0	0	0	1	215	1 469	1	215	1 469
South Africa	2020	7	10 003	95 404	17	27 088	247 826	24	37 091	343 230
	2021	7	28 716	293 512	30	32 473	264 975	37	61 189	558 487
	2022	3	22 582	238 822	48	55 509	407 688	51	78 091	646 510

<sup>1</sup>Hotels, motels, guest-houses, chalets, bed-and-breakfast accommodation and casinos.

<sup>2</sup>Institutions for the disabled, boarding houses and hostels.

**Table 13.1 – Number, square metres and value of non-residential buildings reported as completed to municipalities by province: office and banking space, shopping space and industrial and warehouse space**

Municipal reporting aggregated to provincial level by year		Non-residential buildings								
		Office and banking space			Shopping space			Industrial and warehouse space		
		Number of buildings	Total square metres	Total value R'000	Number of buildings	Total square metres	Total value R'000	Number of buildings	Total square metres	Total value R'000
Western Cape	2020	18	87 562	708 327	19	90 562	710 509	71	151 424	1 017 617
	2021	25	101 600	824 807	42	109 695	895 455	98	305 719	2 111 329
	2022	43	68 472	545 622	38	95 637	780 994	95	252 461	1 702 065
Eastern Cape	2020	2	1 070	7 047	2	2 369	17 128	9	82 129	547 435
	2021	5	12 747	89 972	4	3 605	23 466	16	115 471	827 859
	2022	1	3 921	30 109	7	29 013	237 538	14	12 111	93 300
Northern Cape	2020	1	400	3 440	1	4 775	39 155	14	13 768	116 214
	2021	4	1 040	8 562	2	1 190	10 429	3	4 188	34 475
	2022	3	1 466	13 195	1	249	2 344	6	22 619	186 492
Free State	2020	2	6 713	54 187	2	3 620	28 517	8	15 415	122 231
	2021	1	147	1 091	2	538	3 640	6	6 315	46 469
	2022	1	261	2 081	1	207	1 992	2	2 786	21 319
KwaZulu-Natal	2020	8	29 615	302 696	16	17 559	147 588	37	418 962	2 518 306
	2021	11	27 611	286 860	46	111 176	1 028 371	60	111 282	692 660
	2022	6	10 858	116 522	19	58 740	621 833	53	301 253	1 845 370
North West	2020	5	5 785	35 774	10	21 516	140 758	5	6 751	39 972
	2021	3	7 339	42 368	13	119 727	709 928	7	9 764	66 276
	2022	3	1 309	7 688	14	49 168	366 820	15	19 617	133 706
Gauteng	2020	17	254 755	2 527 988	26	78 085	807 222	62	340 737	2 046 428
	2021	9	30 407	374 815	19	115 114	1 158 117	55	379 629	2 191 974
	2022	14	40 386	411 461	18	126 940	1 439 571	63	587 462	3 658 606
Mpumalanga	2020	1	863	4 573	4	20 575	161 328	10	16 809	120 082
	2021	7	6 989	55 890	3	7 840	51 456	7	10 410	62 457
	2022	2	1 455	8 570	0	0	0	10	14 497	120 236

**Table 13.1 – Number, square metres and value of non-residential buildings reported as completed to municipalities by province: office and banking space, shopping space and industrial and warehouse space (concluded)**

Municipal reporting aggregated to provincial level by year		Non-residential buildings								
		Office and banking space			Shopping space			Industrial and warehouse space		
		Number of buildings	Total square metres	Total value R'000	Number of buildings	Total square metres	Total value R'000	Number of buildings	Total square metres	Total value R'000
Limpopo	2020	3	8 190	49 282	2	964	5 558	9	30 673	185 039
	2021	3	1 029	6 223	2	2 580	14 078	5	2 181	13 734
	2022	0	0	0	6	10 971	72 254	11	19 349	125 963
South Africa	2020	57	394 953	3 693 314	82	240 025	2 057 763	225	1 076 668	6 713 324
	2021	68	188 909	1 690 588	133	471 465	3 894 940	257	944 959	6 047 233
	2022	73	128 128	1 135 248	104	370 925	3 523 346	269	1 232 155	7 887 057

**Table 13.2 – Number, square metres and value of non-residential buildings reported as completed to municipalities by province: schools, nursery schools, crèches, hospitals, churches, sport clubs, recreation clubs and all other non-residential space**

Municipal reporting aggregated to provincial level by year		Non-residential buildings									Non-residential buildings reported as completed to municipalities <sup>1</sup>		
		Schools, nursery schools, crèches and hospitals			Churches, sport and recreation clubs			All other non-residential space					
		Number of buildings	Total square metres	Total value R'000	Number of buildings	Total square metres	Total value R'000	Number of buildings	Total square metres	Total value R'000	Number of buildings	Total square metres	Total value R'000
Western Cape	2020	14	40 594	290 523	10	9 065	60 748	29	24 831	171 692	161	404 038	2 959 416
	2021	19	26 911	189 830	11	12 156	84 166	62	18 470	118 206	257	574 551	4 223 793
	2022	20	38 746	273 534	24	17 839	117 550	86	90 997	704 106	306	564 152	4 123 871
Eastern Cape	2020	2	1 263	6 947	1	375	1 533	3	214	1 127	19	87 420	581 217
	2021	4	17 160	127 844	3	1 921	13 843	1	35	245	33	150 939	1 083 229
	2022	7	33 513	253 091	3	1 195	7 968	2	1 028	8 287	34	80 781	630 293
Northern Cape	2020	1	189	1 550	4	1 281	10 890	0	0	0	21	20 413	171 249
	2021	0	0	0	3	449	3 735	0	0	0	12	6 867	57 201
	2022	0	0	0	1	202	1 637	1	240	2 259	12	24 776	205 927
Free State	2020	0	0	0	0	0	0	0	0	0	12	25 748	204 935
	2021	1	4 235	37 937	1	408	2 213	1	63	440	12	11 706	91 790
	2022	0	0	0	2	353	2 129	0	0	0	6	3 607	27 521
KwaZulu-Natal	2020	4	8 072	89 450	4	5 805	38 015	2	253	2 884	71	480 266	3 098 939
	2021	5	3 429	27 107	3	3 332	21 218	0	0	0	125	256 830	2 056 216
	2022	7	18 991	191 008	7	4 145	42 609	1	50	250	93	394 037	2 817 592
North West	2020	2	2 194	12 255	0	0	0	0	0	0	22	36 246	228 759
	2021	0	0	0	1	520	3 993	0	0	0	24	137 350	822 565
	2022	5	14 991	87 789	2	1 147	6 880	3	2 225	15 555	42	88 457	618 438
Gauteng	2020	9	19 476	154 128	3	2 045	14 208	4	1 278	11 692	121	696 376	5 561 666
	2021	14	53 158	505 112	7	16 418	101 889	6	8 061	68 963	110	602 787	4 400 870
	2022	10	39 874	354 049	3	1 282	12 432	6	3 199	24 854	114	799 143	5 900 973
Mpumalanga	2020	3	9 403	71 753	0	0	0	3	183	992	21	47 833	358 728
	2021	0	0	0	1	3 964	23 388	0	0	0	18	29 203	193 191
	2022	2	8 599	71 604	0	0	0	0	0	0	14	24 551	200 410

<sup>1</sup>Office and banking space, shopping space, industrial and warehouse space, schools, nursery schools, crèches, hospitals, churches, sport clubs, recreation clubs and all other non-residential space (Tables 13.1 and 13.2).

**Table 13.2 – Number, square metres and value of non-residential buildings reported as completed to municipalities by province: schools, nursery schools, crèches, hospitals, churches, sport clubs, recreation clubs and all other non-residential space (concluded)**

Municipal reporting aggregated to provincial level by year		Non-residential buildings									Non-residential buildings reported as completed to municipalities <sup>1</sup>		
		Schools, nursery schools, crèches and hospitals			Churches, sport and recreation clubs			All other non-residential space					
		Number of buildings	Total square metres	Total value R'000	Number of buildings	Total square metres	Total value R'000	Number of buildings	Total square metres	Total value R'000	Number of buildings	Total square metres	Total value R'000
Limpopo	2020	2	5 535	29 810	1	2 976	17 160	2	1 926	11 165	19	50 264	298 014
	2021	0	0	0	1	1 752	11 269	3	1 118	6 458	14	8 660	51 762
	2022	2	2 167	15 490	0	0	0	2	2 014	12 900	21	34 501	226 607
South Africa	2020	37	86 726	656 416	23	21 547	142 554	43	28 685	199 552	467	1 848 604	13 462 923
	2021	43	104 893	887 830	31	40 920	265 714	73	27 747	194 312	605	1 778 893	12 980 617
	2022	53	156 881	1 246 565	42	26 163	191 205	101	99 753	768 211	642	2 014 005	14 751 632

<sup>1</sup>Office and banking space, shopping space, industrial and warehouse space, schools, nursery schools, crèches, hospitals, churches, sport clubs, recreation clubs and all other non-residential space (Tables 13.1 and 13.2).

**Table 14 – Number, square metres and value of additions and alterations reported as completed to municipalities by province**

Municipal reporting aggregated to provincial level by year		Additions and alterations												
		Dwelling-houses			Other residential buildings			Non-residential buildings			Internal alterations	Additions and alterations reported as completed to municipalities		
		Number of plans	Total square metres	Total value R'000	Number of plans	Total square metres	Total value R'000	Number of plans	Total square metres	Total value R'000	Total value R'000	Number of plans	Total square metres	Total value R'000
Western Cape	2020	4 892	331 756	2 306 133	596	73 424	574 074	488	211 098	1 490 391	1 040 184	5 976	616 278	5 410 782
	2021	7 423	545 621	3 590 447	683	43 143	345 496	683	285 798	2 040 232	1 214 938	8 789	874 562	7 191 113
	2022	11 843	902 634	6 071 084	736	69 394	564 407	694	279 605	2 241 357	1 032 979	13 273	1 251 633	9 909 827
Eastern Cape	2020	1 106	74 192	519 537	11	583	4 015	46	22 757	156 128	12 159	1 163	97 532	691 839
	2021	1 266	92 071	670 050	31	6 897	50 919	102	21 065	155 659	41 480	1 399	120 033	918 108
	2022	965	75 750	597 204	17	4 443	35 340	100	45 477	360 928	19 567	1 082	125 670	1 013 039
Northern Cape	2020	289	21 188	180 879	0	0	0	11	7 110	61 167	2 340	300	28 298	244 386
	2021	320	27 619	230 879	0	0	0	13	9 110	77 170	2 678	333	36 729	310 727
	2022	423	37 482	326 050	0	0	0	10	4 145	36 200	4 918	433	41 627	367 168
Free State	2020	109	8 298	52 311	9	677	5 020	8	3 558	28 376	13 413	126	12 533	99 120
	2021	227	19 594	130 755	2	69	421	6	631	4 174	2 095	235	20 294	137 445
	2022	281	19 067	131 348	0	0	0	15	4 096	31 462	3 558	296	23 163	166 368
KwaZulu-Natal	2020	858	78 384	863 459	49	3 475	36 510	70	32 684	349 535	69 825	977	114 543	1 319 329
	2021	1 085	102 590	1 164 792	54	13 838	149 207	100	54 489	581 616	68 439	1 239	170 917	1 964 054
	2022	938	80 993	918 587	54	9 727	106 854	94	35 342	384 686	123 065	1 086	126 062	1 533 192
North West	2020	212	21 804	144 583	2	366	2 172	19	5 657	38 821	19 360	233	27 827	204 936
	2021	293	24 015	147 471	4	598	3 455	15	16 175	100 948	47 362	312	40 788	299 236
	2022	188	15 951	97 902	3	640	3 685	15	4 491	30 231	30 782	206	21 082	162 600
Gauteng	2020	1 246	132 110	1 072 670	98	14 742	136 402	83	69 515	600 914	34 283	1 427	216 367	1 844 269
	2021	1 815	201 872	1 717 021	54	3 251	31 379	79	90 379	658 871	27 144	1 948	295 502	2 434 415
	2022	1 727	197 962	1 823 646	32	5 263	47 189	88	80 204	607 257	38 672	1 847	283 429	2 516 764
Mpumalanga	2020	283	19 896	118 374	1	18	94	14	5 024	36 093	30 423	298	24 938	184 984
	2021	166	13 901	97 265	0	0	0	6	2 261	13 067	45 075	172	16 162	155 407
	2022	142	11 021	78 818	0	0	0	1	1 806	10 634	19 690	143	12 827	109 142

**Table 14 – Number, square metres and value of additions and alterations reported as completed to municipalities by province (concluded)**

Municipal reporting aggregated to provincial level by year		Additions and alterations												
		Dwelling-houses			Other residential buildings			Non-residential buildings			Internal alterations	Additions and alterations reported as completed to municipalities		
		Number of plans	Total square metres	Total value R'000	Number of plans	Total square metres	Total value R'000	Number of plans	Total square metres	Total value R'000	Total value R'000	Number of plans	Total square metres	Total value R'000
Limpopo	2020	53	4 714	26 899	9	1 562	9 304	7	3 743	22 315	10 000	69	10 019	68 518
	2021	62	6 282	37 605	20	1 676	10 158	4	669	4 283	19 001	86	8 627	71 047
	2022	61	6 857	43 720	18	3 373	22 921	6	3 478	23 403	10 687	85	13 708	100 731
South Africa	2020	9 048	692 342	5 284 845	775	94 847	767 591	746	361 146	2 783 740	1 231 987	10 569	1 148 335	10 068 163
	2021	12 657	1 033 565	7 786 285	848	69 472	591 035	1 008	480 577	3 636 020	1 468 212	14 513	1 583 614	13 481 552
	2022	16 568	1 347 717	10 088 359	860	92 840	780 396	1 023	458 644	3 726 158	1 283 918	18 451	1 899 201	15 878 831



## Municipalities covered in the monthly survey

**Table 15 – Municipalities covered in the monthly survey: Western Cape**

Municipality	Main towns within municipal boundaries	District municipality
Bitou	Plettenberg Bay	Eden
Breede Valley	De Doorns, Rawsonville, Touws River, Worcester	Cape Winelands
City of Cape Town	Bellville, Blue Downs, Brackenfell, Cape Town City Centre, Durbanville, Eersterivier, Fish Hoek, Goodwood, Gordon's Bay, Gugulethu, Khayelitsha, Kraaifontein, Kuilsrivier, Langa, Mfuleni, Milnerton, Mitchells Plain, Nyanga, Parow, Plumstead, Simon's Town, Somerset West, Strand	City of Cape Town
Drakenstein	Blouvllei, Hermon, Paarl, Soetendal, Wellington	Cape Winelands
George	George, Herolds Bay, Pacaltsdorp, Wilderness	Eden
Knysna	Knysna, Sedgefield	Eden
Mossel Bay	Groot Brakrivier, Herbertsdale, Klein Brakrivier, Mossel Bay	Eden
Oudtshoorn	De Rust, Dysselsdorp, Oudtshoorn	Eden
Overstrand	Betty's Bay, Fisherhaven, Gansbaai, Hangklip, Hawston, Hermanus, Kleinmond, Onrus, Rooiels Bay, Stanford, Vermont	Overberg
Saldanha Bay	Hopefield, Langebaan, Saldanha, Vredenburg	West Coast
Stellenbosch	Franschhoek, Pniel, Stellenbosch	Cape Winelands
Swartland	Darling, Koringberg, Malmesbury, Moorreesburg, Yzerfontein	West Coast

**Table 16 – Municipalities covered in the monthly survey: Eastern Cape**

<b>Municipality</b>	<b>Main towns within municipal boundaries</b>	<b>District municipality</b>
Buffalo City	Beacon Bay, Bisho, East London, Gonubie, Qonce, Mdantsane, Zwelitsha	Buffalo City
King Sabata Dalindyebo	Mqanduli, Mthatha	O R Tambo
Kouga	Cape St Francis, Hankey, Humansdorp, Jeffreys Bay, Oyster Bay, Patensie, St Francis Bay	Sarah Baartman
Makana	Alicedale, Makhanda, Riebeeck East	Sarah Baartman
Ndlambe	Alexandria, Bathurst, Kenton-on-Sea, Port Alfred	Sarah Baartman
Nelson Mandela	Despatch, Gqeberha, Uitenhage	Nelson Mandela Bay
Walter Sisulu	Aliwal North, Jamestown	Joe Gqabi

**Table 17 – Municipalities covered in the monthly survey: Northern Cape**

<b>Municipality</b>	<b>Main towns within municipal boundaries</b>	<b>District municipality</b>
Dawid Kruiper	Dagbreek, Gelukspruit, Karos, Louisvale, Sprigg, Upington	Z F Mgcawu
Ga-Segonyana	Bekker, Ga-Mopedi, Gathlose, Kuruman, Mothibistad, Seoding	John Taolo
Kai !Garib	Kakamas, Keimoes, Kenhardt	Z F Mgcawu
Sol Plaatje	Kenilworth, Kimberley, Modderrivier, Ritchie, Riverton, Spytfontein	Frances Baard

**Table 18 – Municipalities covered in the monthly survey: Free State**

<b>Municipality</b>	<b>Main towns within municipal boundaries</b>	<b>District municipality</b>
Dihlabeng	Bethlehem, Bohlokong, Clarens, Fouriesburg, Paul Roux, Rosendal	Thabo Mofutsanyana
Maluti-a-Phofung	Harrismith, Kestell, Phuthaditjhaba	Thabo Mofutsanyana
Mangaung	Bloemfontein, Botshabelo, Thaba Nchu	Mangaung
Mantsopa	Excelsior, Hobhouse, Ladybrand, Manyatseng, Thaba Phatshoa, Tweespruit	Thabo Mofutsanyana
Matjhabeng	Allanridge, Hennenman, Kutlwanong, Meloding, Odendaalsrus, Thabong, Ventersburg, Virginia, Welkom	Lejweleputswa
Metsimaholo	Deneysville, Oranjeville, Sasolburg	Fezile Dabi
Moqhaka	Kroonstad, Maokeng, Steynsrus, Viljoenskroon	Fezile Dabi
Ngwathe	Edenville, Heilbron, Koppies, Parys, Vredefort	Fezile Dabi

**Table 19 – Municipalities covered in the monthly survey: KwaZulu-Natal**

<b>Municipality</b>	<b>Main towns within municipal boundaries</b>	<b>District municipality</b>
Alfred Duma	Colenso, Ekuvukeni, Etholeni, Ingwe, Kliprivier, Ladysmith, Limehill, Mabaso, Rockcliff, Sams Hoek	uThukela
City of uMhlathuze	Empangeni, Richards Bay	King Cetshwayo
eThekweni	Amanzimtoti, Botha's Hill, Cato Ridge, Clermont, Drummond, Durban, Hillcrest, Inchanga, Kingsburgh, Kloof, KwaDabeka, KwaMakhutha, KwaMashu, Mount Edgecombe, Mpumalanga, New Germany, Pinetown, Queensburgh, Tongaat, Umdloti, Umhlanga, Umlazi, Verulam, Westville	eThekweni
Greater Kokstad	Bonny Ridge, Franklin, Kingscote, Kokstad, New Amalfi, Swartberg	Harry Gwala
KwaDukuza	Ballito, Blythedale Beach, Shakaskraal, Stanger, Tinley Manor Beach, Zinkwazi Beach	Ilembe
Msunduzi	Edendale, Pietermaritzburg	uMgungundlovu
Newcastle	Madadeni, Newcastle, Osizweni	Amajuba
Ray Nkonyeni	Hibberdene, Margate, Marina Beach, Munster, Port Edward, Port Shepstone, Ramsgate, Shelly Beach, Southbroom, St Michael's-on-Sea, Trafalgar, Uvongo	Ugu
Umdoni	Pennington, Scottburgh, Umzinto	Ugu
uMngeni	Hilton, Howick, Nottingham Road	uMgungundlovu

**Table 20 – Municipalities covered in the monthly survey: North West**

<b>Municipality</b>	<b>Main towns within municipal boundaries</b>	<b>District municipality</b>
City of Matlosana	Hartbeesfontein, Klerksdorp, Orkney, Stilfontein	Dr Kenneth Kaunda
Ditsobotla	Coligny, Itsoseng, Lichtenburg	Ngaka Modiri Molema
Madibeng	Brits, De Wildt, Hartbeespoort, Letlhabile	Bojanala Platinum
Mahikeng	Mafikeng, Ottoshoop	Ngaka Modiri Molema
Naledi	Stella, Vryburg	Dr Ruth Segomotsi Mompati
Ramotshere Moiloa	Zeerust	Ngaka Modiri Molema
Rustenburg	Marikana, Rustenburg	Bojanala Platinum
Tlokwe City Council	Potchefstroom	Dr Kenneth Kaunda

**Table 21 – Municipalities covered in the monthly survey: Gauteng**

<b>Municipality</b>	<b>Main towns within municipal boundaries</b>	<b>District municipality</b>
City of Johannesburg	Alexandra, Eikenhof, Eldorado Park, Ennerdale, Fourways, Florida, Grasmere, Halfway House, Honeydew, Johannesburg, Kyalami, Lawley Estate, Lenasia, Midrand, Modderfontein, Randburg, Randjiesfontein, Rivonia, Roodepoort, Sandton, Soweto, Van Wyksrust	City of Johannesburg
City of Tshwane	Akasia, Atteridgeville, Babelegi, Bon Accord, Bronkhorstspuit, Centurion, Diloppe, Doornrandjies, Ekangala, Erasmia, Ga-Mokone, Ga-Rankuwa, Garsfontein, Hammanskraal, Irene, Klippan, Mabopane, Mamelodi, Onderstepoort, Pinedene, Pretoria, Pretoria North, Soshanguve, Temba, Tierpoort, Tswaiing, Valhalla, Welbekend, Winterveld	City of Tshwane
Ekurhuleni	Alberton, Bedfordview, Benoni, Boksburg, Brakpan, Daveyton, Duduza, Edenvale, Germiston, Katlehong, Kempton Park, KwaThema, Nigel, Springs, Tembisa, Thokoza, Tsakane, Vosloorus	Ekurhuleni
Emfuleni	Boipatong, Bophelong, Evaton, Sebokeng, Sharpeville, Vanderbijlpark, Vereeniging	Sedibeng
Lesedi	Heidelberg, Rensburgdorp, Ratanda	Sedibeng
Merafong City	Carletonville, Fochville, Khutsong	West Rand
Midvaal	Daleside, De Deur, Henly-on-Klip, Highbury, Meyerton, Randvaal, Walkerville	Sedibeng
Mogale City	Battery, Elberta, Hekpoort, Krugersdorp, Luipaardsvlei, Magaliesburg, Muldersdrift, Nootgedacht, Thorndale	West Rand
Randfontein	Finsbury, Kocksoord, Mohlakeng, Randfontein	West Rand
Westonaria	Bekkersdal, Venterspos, Westonaria	West Rand

**Table 22 – Municipalities covered in the monthly survey: Mpumalanga**

<b>Municipality</b>	<b>Main towns within municipal boundaries</b>	<b>District municipality</b>
City of Mbombela	Hazyview, KaNyamazane, Nelspruit, White River	Ehlanzeni
Emalahleni	KwaGuqa, Witbank	Nkangala
Govan Mbeki	Bethal, Evander, Leandra, Secunda	Gert Sibande
Msukaligwa	Breyton, Chrissiesmeer, Davel, Ermelo, Lothair, Sheepmoor, Warbuton	Gert Sibande
Nkomazi	Hectorspruit, Komatipoort, Malelane, Marloth Park	Ehlanzeni
Steve Tshwete	Hendrina, Mhluzi, Middelburg	Nkangala
Victor Khanye	Argent, Delmas, Eloff, Sundra	Nkangala

**Table 23 – Municipalities covered in the monthly survey: Limpopo**

<b>Municipality</b>	<b>Main towns within municipal boundaries</b>	<b>District municipality</b>
Greater Tzaneen	Haenertsburg, Letsitele, Politsi, Rubbervale, Nkowankowa, Tzaneen	Mopani
Modimolle	Haakdong, Mabaleng, Modimolle, Palala	Waterberg
Mogalakwena	Drummondlea, Mahwelereng, Mokopane, Uitzicht	Waterberg
Mookgophong	Crecy, Immerpan, Mookgophong, Thusang	Waterberg
Musina	Beitbridge, Bridgewater, Brombeek, Evangelina, Huntleigh, Mopane, Musina, Tshipise	Vhembe
Polokwane	Polokwane, Seshego	Capricorn
Thabazimbi	Dwaalboom, Northam, Rooiberg, Thabazimbi	Waterberg

## Explanatory notes

### Introduction

- 1 Statistics South Africa (Stats SA) conducts a monthly survey of metropolitan municipalities and large local municipalities on building plans passed and buildings completed for the private sector. This publication contains aggregated data for the twelve months of the calendar year 2022. The survey collects detailed information of building plans passed and buildings completed reported for:
- residential buildings;
  - non-residential buildings; and
  - additions and alterations.

The figures obtained from municipalities do not include the bulk of low-cost dwelling-houses. According to some municipalities they are not always notified about subsidised low-cost housing projects being executed in their area of jurisdiction.

### Scope of the survey

- 2 This survey covers metropolitan municipalities and large local municipalities conducting activities for the private sector regarding:
- approval of building plans; and
  - final inspection of completed buildings and issuing of occupation certificates.

### Classification

- 3 Building activities are classified in division five according to the 1993 edition of the *Standard Industrial Classification of All Economic Activities (SIC)*, Fifth Edition, Report No. 09-90-02. The SIC is based on the 1990 *International Standard Industrial Classification of All Economic Activities (ISIC)* with suitable adaptations for local conditions.

### Statistical unit

- 4 The statistical unit for the collection of information is a municipality.

### Survey methodology and design

- 5 Stats SA conducts a monthly survey of metropolitan municipalities and large local municipalities on building plans passed and buildings completed. An annual survey of the remaining municipalities is conducted regarding buildings completed. The monthly survey represents approximately 88 per cent of the total value of buildings completed. Information is collected by email, fax and telephone.

### Comparison between building plans passed and buildings completed

- 6 No direct comparison can be made between building plans passed and buildings completed for the following reasons:
- an unknown number of building plans are passed and afterwards not executed;
  - if building operations have not commenced within the first year after approval, building plans are resubmitted;
  - the time-lag between the date of passing of a building plan and the date of completion of the building varies considerably; and
  - according to municipalities, final inspections of completed buildings are not always executed and therefore not recorded as completed.

### Reliability of estimates

- 7 Inaccuracies may occur because of imperfections in reporting by municipalities. Every effort is made to reduce errors to a minimum by carefully editing, evaluating and querying of data.

### Collection rate

- 8 The collection rate for the year 2022 was 85,2%.



- Number of dwelling-houses**      **9**    The number of dwelling-houses is shown and not the number of plans passed, since one plan may cover more than one dwelling-house.
- Related publications**            **10**    Users may also wish to refer to the following publications:
- P5041.1: *Selected building statistics of the private sector as reported by local government institutions* issued monthly;
  - P9101.2: *Actual and expected expenditure on construction by the public sector per region* issued annually; and
  - *Building Statistics* (Report No. 50-11-01) issued annually.
- Rounding-off of figures**        **11**    The figures in the tables have, where necessary, been rounded off to the nearest digit shown. There may, therefore, be slight discrepancies between the sums of the constituent items and the totals shown.
- Symbols and abbreviations**    **12**    0            nil or figure too small to publish  
    \*            revised  
    ..          no data reported  
    Stats SA    Statistics South Africa  
    SIC        Standard Industrial Classification of All Economic Activities  
    ISIC      International Standard Industrial Classification of All Economic Activities  
    GDP      Gross domestic product

## Glossary

<b>Additions and alterations</b>	Extensions to existing buildings as well as internal and external alterations of existing buildings.
<b>Annual percentage change</b>	The annual percentage change is the change in the actual values of building activities (building plans passed or buildings completed) of the relevant year compared with the actual values of building activities (building plans passed or buildings completed) of the previous year expressed as a percentage.
<b>Block of flats</b>	High-density housing consisting of a number of self-contained dwelling-units with at least one living-room together with a kitchen and bathroom conjoined to similar units in one building.
<b>District municipality</b>	A municipality that has municipal executive and legislative authority in an area that includes more than one municipality, and which is described in section 155(1) of the Constitution as a category C municipality (refer to Local Government: Municipal Structure Act, 1998 (Act No. 117 of 1998)).
<b>Dwelling-house</b>	A free-standing, complete structure on a separate stand or a self-contained dwelling-unit, e.g. granny flat, on the same premises as an existing residence. Out-buildings and garages are included.
<b>Municipality</b>	A generic term describing the unit of government in the third sphere responsible for local government in a geographically demarcated area. It includes district, metropolitan and local municipalities.
<b>Local municipality</b>	A municipality that shares municipal executive and legislative authority in its area with a district municipality within whose area it falls, and which is described in section 155(1) of the Constitution as a category B municipality (refer to Local Government: Municipal Structure Act, 1998 (Act No. 117 of 1998)).
<b>Metropolitan municipality</b>	A municipality that has municipal executive and legislative authority in an area that includes more than one municipality, and which is described in section 155(1) of the Constitution as a category A municipality (refer to Local Government: Municipal Structure Act, 1998 (Act No. 117 of 1998)).
<b>Non-residential buildings</b>	Factories and commercial, financial and other office buildings, as well as other buildings not used for residential purposes, such as churches, halls, clubs, schools and hospitals.
<b>Other residential buildings</b>	Institutions for the disabled, boarding houses, hostels and tourism accommodation e.g. hotels, motels, guest houses, holiday chalets, bed-and-breakfast accommodation, entertainment centres and casinos.
<b>Reference period</b>	Reference period for this statistical release refers to the calendar year 2022.
<b>Residential buildings</b>	Dwelling-houses, flats, townhouses and other residential buildings.
<b>Townhouses</b>	Multiple, medium-density dwelling-units including cluster housing, group housing, simplexes, duplexes, triplexes and other similar dwelling-units which are usually grouped together, with one level of each unit on ground level. This category excludes blocks of flats.

## General information

Stats SA publishes approximately 300 different statistical releases each year. It is not economically viable to produce them in more than one of South Africa's 11 official languages. Since the releases are used extensively, not only locally but also by international economic and social-scientific communities, Stats SA releases are only published in English.

Stats SA has copyright on this publication. Users may apply the information as they wish, provided that they acknowledge Stats SA as the source of the basic data wherever they process, apply, utilise, publish or distribute the data; and also that they specify that the relevant application and analysis (where applicable) result from their own processing of the data.

### Advance release calendar

An advance release calendar is disseminated on [www.statssa.gov.za](http://www.statssa.gov.za).

### Stats SA products

A complete set of Stats SA publications is available at the Stats SA Library and the following libraries:

National Library of South Africa, Pretoria Division  
National Library of South Africa, Cape Town Division  
Natal Society Library, Pietermaritzburg  
Library of Parliament, Cape Town  
Bloemfontein Public Library  
Johannesburg Public Library  
Eastern Cape Library Services, Qonce  
Central Regional Library, Polokwane  
Central Reference Library, Mbombela  
Central Reference Collection, Kimberley  
Central Reference Library, Mmabatho

Stats SA also provides a subscription service.

### Electronic services

A large range of data are available via online services. For more details about our electronic data services, contact Stats SA's user information services at (012) 310 8600. You can visit us on the internet at: [www.statssa.gov.za](http://www.statssa.gov.za).

### Enquiries

Telephone number: 082 888 2374 (technical enquiries)  
(012) 310 8600 (user information services)

Email: [joycee@statssa.gov.za](mailto:joycee@statssa.gov.za) (technical enquiries)  
[info@statssa.gov.za](mailto:info@statssa.gov.za) (user information services)

Postal address: Private Bag X44, Pretoria, 0001

*Produced by Stats SA*