



stats sa

Department:
Statistics South Africa
REPUBLIC OF SOUTH AFRICA

Private Bag X44, Pretoria, 0001, South Africa, ISibalo House, Koch Street, Salvokop, Pretoria, 0002
www.statssa.gov.za, info@statssa.gov.za, Tel +27 12 310 8911

STATISTICAL RELEASE

P5041.3

Selected building statistics of the private sector as reported by local government institutions

2021

Embargoed until:
29 June 2022
14:30

ENQUIRIES:
Joyce Essel-Mensah
082 888 2374

FORTHCOMING ISSUE:
2022

EXPECTED RELEASE DATE:
June 2023

Dipalopalo tsa Aforikaborwa • Dipalopalo tsa Aforika Borwa • Ezazibalo zaseNingizimu Afrika • Tshitatistika Afrika Tshipembe • Tinhlayo Afrika-Dzonga

Statistieke Suid-Afrika • Dipalopalo tša Aforika Borwa • Telubalo zaseNingizimu Afrika • EzeeNkcukacha maNani zoMzantsi Afrika • Iimbalobalo zeSewula Afrika

IMPROVING LIVES THROUGH DATA ECOSYSTEMS



Contents

Introduction	ii
Key findings: Comparison between 2020 and 2021	ii
Key findings for 2021	vi
List of detailed tables	xii
List of municipalities covered in the monthly survey.....	xiii
Municipal reporting of building plans passed aggregated to provincial level	1
Municipal reporting of buildings completed aggregated to provincial level	17
Municipalities covered in the monthly survey	33
Explanatory notes	40
Glossary.....	42
General information	43

Introduction

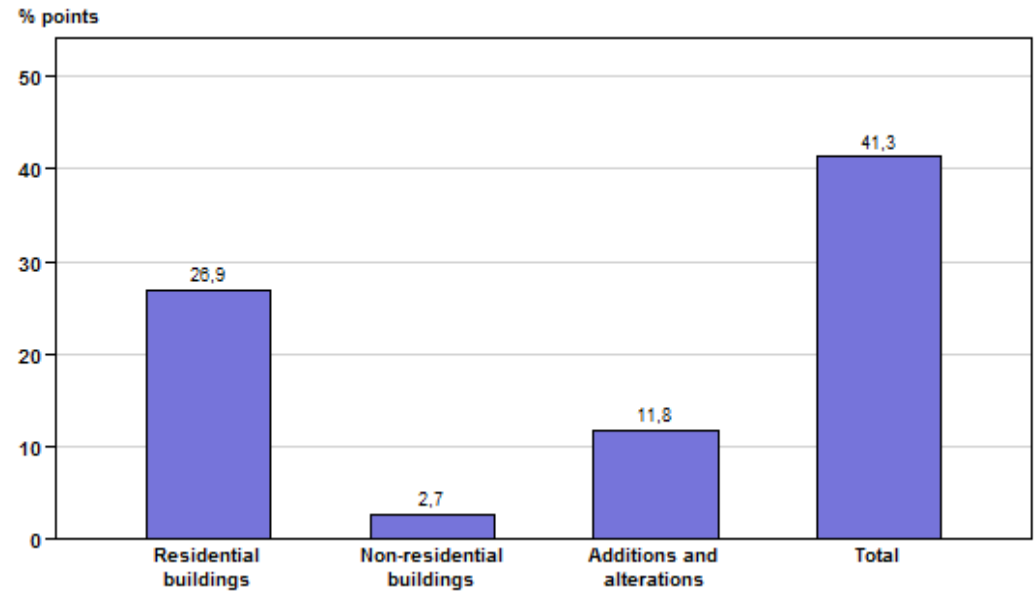
Data published in this statistical release are based on a monthly survey of metropolitan municipalities and large local municipalities on building plans passed and buildings completed for the private sector, released monthly at national and provincial level as P5041.1. This annual release contains aggregated data for the 12 months of 2021 by province, municipality and type of building.

Key findings: Comparison between 2020 and 2021

Table A.1 – Selected key figures regarding building plans passed at current prices

Estimates at current prices	2020 R'000	2021 R'000	% change between 2020 and 2021	Contribution (% points) to the % change in value of building plans passed between 2020 and 2021	Difference in value between 2020 and 2021 R'000
Residential buildings	39 711 702	60 223 392	51,7	26,9	20 511 690
Dwelling-houses	24 081 962	38 024 292	57,9	18,3	13 942 330
Flats and townhouses	15 233 516	21 004 312	37,9	7,6	5 770 796
Other residential buildings	396 224	1 194 788	201,5	1,0	798 564
Non-residential buildings	15 835 816	17 914 207	13,1	2,7	2 078 391
Office and banking space	1 818 306	2 519 708	38,6	0,9	701 402
Shopping space	4 379 164	3 148 697	-28,1	-1,6	-1 230 467
Industrial and warehouse space	6 937 570	10 130 341	46,0	4,2	3 192 771
Other non-residential	2 700 776	2 115 461	-21,7	-0,8	-585 315
Additions and alterations	20 832 853	29 821 908	43,1	11,8	8 989 055
Total	76 380 371	107 959 507	41,3	41,3	31 579 136

Figure A.1 – Contribution (percentage points) of type of building to the percentage change in the total value of building plans passed between 2020 and 2021

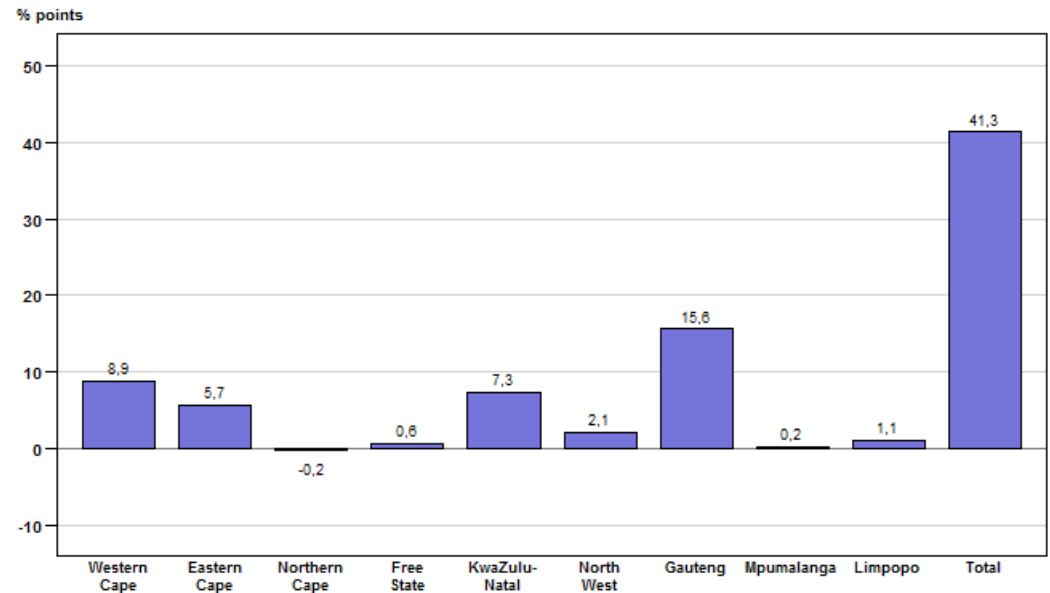


The value of recorded building plans passed by larger municipalities (at current prices) increased by 41,3% (R31 579,1 million) in 2021 compared with 2020. Increases were reported for residential buildings (contributing 26,9 percentage points or R20 511,7 million), additions and alterations (contributing 11,8 percentage points or R8 989,1 million) and non-residential buildings (contributing 2,7 percentage points or R2 078,4 million) – see Table A.1 and Figure A.1.

Table A.2 – Recorded building plans passed by larger municipalities aggregated to provincial level: 2020 vs 2021

Estimates at current prices	2020 R'000	2021 R'000	% change between 2020 and 2021	Contribution (% points) to the % change in the value of building plans passed between 2020 and 2021	Difference in value between 2020 and 2021 R'000
Western Cape	23 451 816	30 277 225	29,1	8,9	6 825 409
Eastern Cape	4 054 382	8 411 924	107,5	5,7	4 357 542
Northern Cape	1 204 787	1 072 383	-11,0	-0,2	-132 404
Free State	2 048 029	2 480 087	21,1	0,6	432 058
KwaZulu-Natal	13 316 456	18 876 189	41,8	7,3	5 559 733
North West	2 986 955	4 580 930	53,4	2,1	1 593 975
Gauteng	24 009 143	35 952 379	49,7	15,6	11 943 236
Mpumalanga	3 760 738	3 894 173	3,5	0,2	133 435
Limpopo	1 548 065	2 414 217	56,0	1,1	866 152
Total	76 380 371	107 959 507	41,3	41,3	31 579 136

Figure A.2 – Provincial contribution (percentage points) to the percentage change in the total value of building plans passed between 2020 and 2021

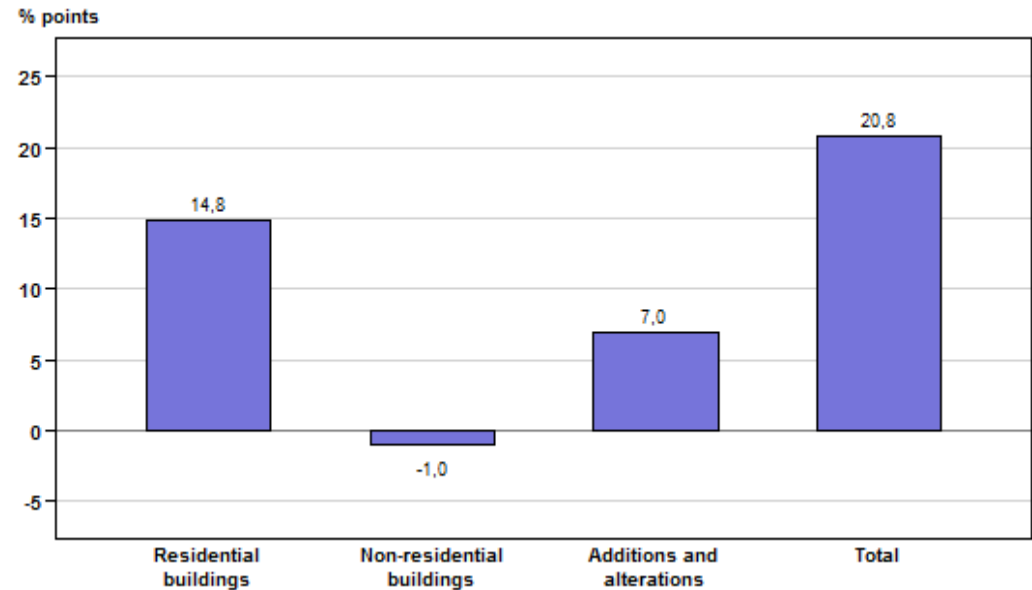


The year-on-year increase of 41,3% in the total value of building plans passed in 2021 is mainly attributed to positive contributions recorded by municipalities in Gauteng (contributing 15,6 percentage points or R11 943,2 million), Western Cape (contributing 8,9 percentage points or R6 825,4 million), KwaZulu-Natal (contributing 7,3 percentage points or R5 559,7 million), Eastern Cape (contributing 5,7 percentage points or R4 357,5 million) and North West (contributing 2,1 percentage points or R1 594,0 million) – see Table A.2 and Figure A.2.

Table B.1 – Selected key figures regarding buildings completed at current prices

Estimates at current prices	2020 R'000	2021 R'000	% change between 2020 and 2021	Contribution (% points) to the % change in value of buildings completed between 2020 and 2021	Difference in value between 2020 and 2021 R'000
Residential buildings	25 571 640	32 858 901	28,5	14,8	7 287 261
Dwelling-houses	14 735 631	19 642 202	33,3	10,0	4 906 571
Flats and townhouses	10 492 779	12 658 212	20,6	4,4	2 165 433
Other residential buildings	343 230	558 487	62,7	0,4	215 257
Non-residential buildings	13 462 923	12 980 617	-3,6	-1,0	-482 306
Office and banking space	3 693 314	1 690 588	-54,2	-4,1	-2 002 726
Shopping space	2 057 763	3 894 940	89,3	3,7	1 837 177
Industrial and warehouse space	6 713 324	6 047 233	-9,9	-1,4	-666 091
Other non-residential	998 522	1 347 856	35,0	0,7	349 334
Additions and alterations	10 068 163	13 481 552	33,9	7,0	3 413 389
Total	49 102 726	59 321 070	20,8	20,8	10 218 344

Figure B.1 – Contribution (percentage points) of type of building to the percentage change in the total value of buildings completed between 2020 and 2021

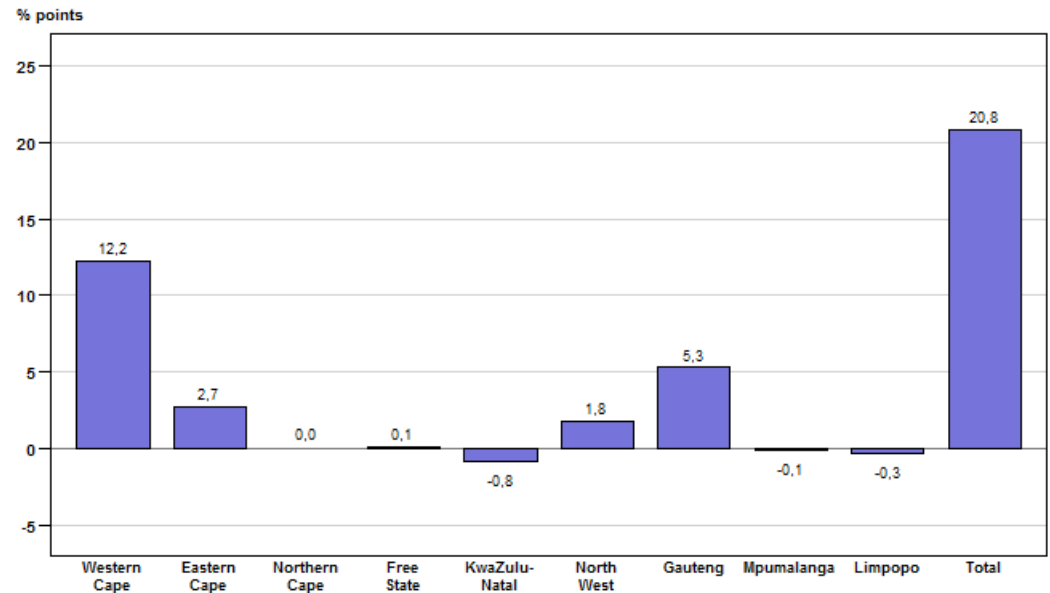


The value of buildings reported as completed to larger municipalities (at current prices) increased by 20,8% (R10 218,3 million) in 2021 compared with 2020. Increases were reported in two of the three major categories, namely residential buildings (contributing 14,8 percentage points or R7 287,3 million) and additions and alterations (contributing 7,0 percentage points or R3 413,4 million). A decrease was reported for non-residential buildings (contributing -1,0 percentage point or -R482,3 million) – see Table B.1 and Figure B.1.

Table B.2 – Provincial contribution (percentage points) to the percentage change in the total value of buildings completed between 2020 and 2021

Estimates at current prices	2020 R'000	2021 R'000	% change between 2020 and 2021	Contribution (% points) to the % change in the value of buildings completed between 2020 and 2021	Difference in value between 2020 and 2021 R'000
Western Cape	16 383 568	22 396 027	36,7	12,2	6 012 459
Eastern Cape	1 913 568	3 214 562	68,0	2,7	1 300 994
Northern Cape	677 327	656 431	-3,1	0,0	-20 896
Free State	618 352	676 334	9,4	0,1	57 982
KwaZulu-Natal	8 146 065	7 745 262	-4,9	-0,8	-400 803
North West	1 435 681	2 310 545	60,9	1,8	874 864
Gauteng	17 825 005	20 414 078	14,5	5,3	2 589 073
Mpumalanga	1 208 440	1 142 488	-5,5	-0,1	-65 952
Limpopo	894 720	765 343	-14,5	-0,3	-129 377
Total	49 102 726	59 321 070	20,8	20,8	10 218 344

Figure B.2 – Provincial contribution (percentage points) to the percentage change in the total value of buildings completed between 2020 and 2021



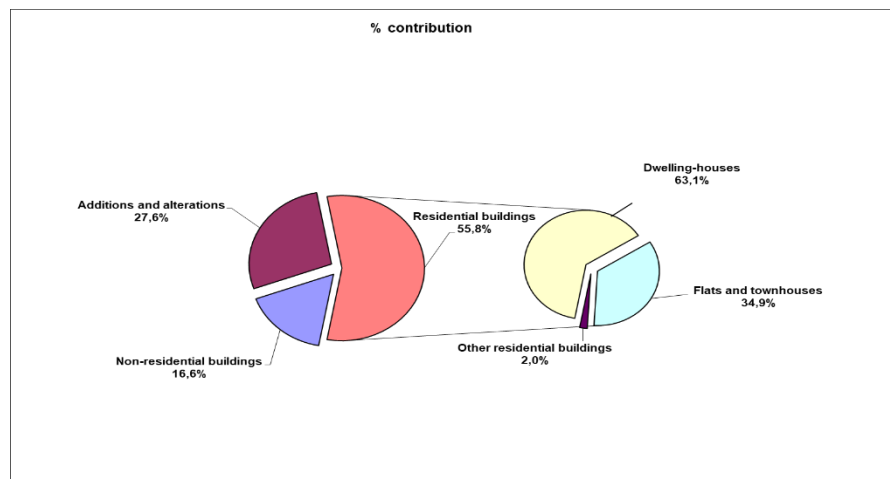
The provinces that recorded the largest year-on-year increases in the total value of buildings completed in 2021 were Western Cape (contributing 12,2 percentage points or R6 012,5 million), Gauteng (contributing 5,3 percentage points or R2 589,1 million), Eastern Cape (contributing 2,7 percentage points or R1 301,0 million) and North West (contributing 1,8 percentage points or R874,9 million) – see Table B.2 and Figure B.2.

Key findings for 2021

Value of recorded building plans passed by larger municipalities for 2021 by type of building

The value of building plans passed for 2021 amounted to R107 959,5 million, showing an increase of 41,3% compared with 2020. Residential buildings contributed the most to the total value of building plans passed (55,8% or R60 223,4 million), followed by additions and alterations (27,6% or R29 821,9 million) and non-residential buildings (16,6% or R17 914,2 million) – see Figure 1 and Table 1, pages 1 and 2.

Figure 1 – Percentage contribution of the value of type of building to the total value of building plans passed for 2021

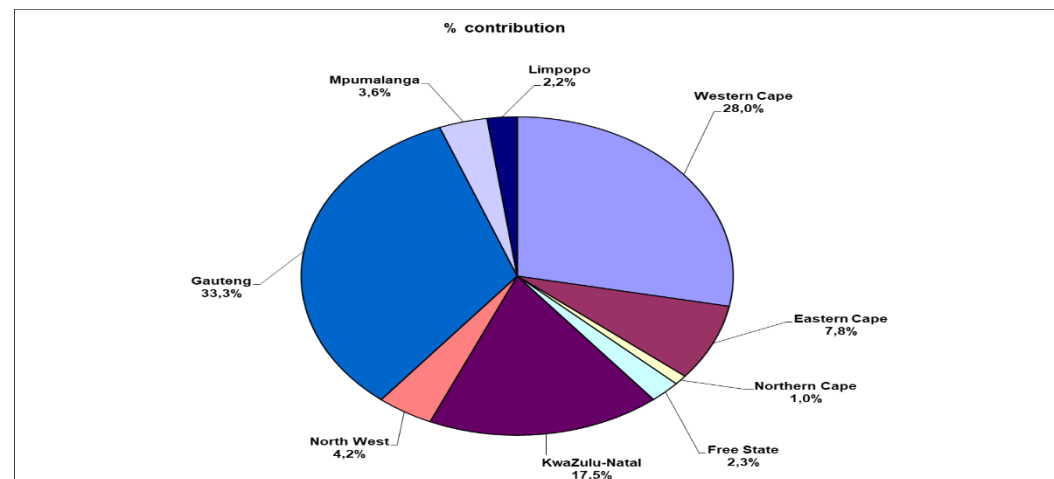


Regarding residential building plans passed, the largest contribution was recorded for dwelling-houses (63,1% or R38 024,3 million), followed by flats and townhouses (34,9% or R21 004,3 million) and ‘other’ residential buildings (2,0% or R1 194,8 million) – see Table 2, pages 3 and 4.

Value of recorded building plans passed by larger municipalities for 2021 by province

The highest provincial contribution to the total value of building plans passed during 2021 was reported for Gauteng (contributing 33,3% or R35 952,4 million to the total of R107 959,5 million for South Africa), followed by Western Cape (28,0% or R30 277,2 million) and KwaZulu-Natal (17,5% or R18 876,2 million) – see Figure 2 and Table 1, pages 1 and 2. Table D (page viii) lists the largest municipal contributors to the value of recorded building plans passed for 2021 by province.

Figure 2 – Provincial percentage contribution to the total value of building plans passed for 2021



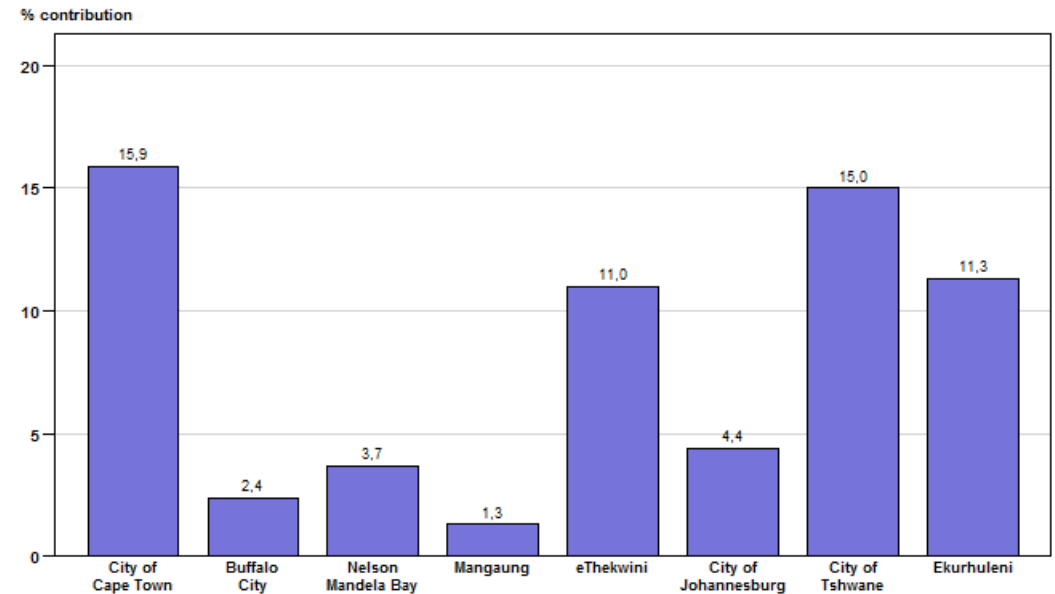
Value of recorded building plans passed by the eight metropolitan municipalities for 2021

The combined value of building plans passed for the eight metropolitan municipalities contributed 65,2% or R70 364,6 million to the total value of building plans passed (R107 959,5 million) during 2021 – see Table C and Table 1, pages 1 and 2.

Table C – Value of recorded building plans passed by the eight metropolitan municipalities for 2021

Metropolitan municipality	Value of building plans passed at metropolitan municipal level R million	Metropolitan municipal % contribution to the total value of building plans passed
City of Cape Town	17 180,6	15,9
Buffalo City	2 640,8	2,4
Nelson Mandela Bay	3 988,8	3,7
Mangaung	1 425,4	1,3
eThekwini	11 852,7	11,0
City of Johannesburg	4 803,7	4,4
City of Tshwane	16 237,8	15,0
Ekurhuleni	12 234,8	11,3
Total metropolitan municipalities	70 364,6	65,2

Figure 3 – Metropolitan percentage contribution to the total value of building plans passed for 2021



The highest metropolitan contribution to the total value of building plans passed during 2021 was recorded by City of Cape Town (15,9% or R17 180,6 million), followed by City of Tshwane (15,0% or R16 237,8 million), Ekurhuleni Metropolitan Municipality (11,3% or R12 234,8 million) and eThekwini Metropolitan Municipality (11,0% or R11 852,7 million) – see Table C and Figure 3.

Table D – The largest municipal contributors to the value of recorded building plans passed for 2021 by province

Province/municipality	Value of building plans passed at provincial/municipal level R million	Municipal % contribution to the value of building plans passed aggregated to provincial level
Gauteng	35 952,4	
City of Tshwane	16 237,8	45,2
Ekurhuleni	12 234,8	34,0
City of Johannesburg	4 803,7	13,4
Midvaal	950,0	2,6
Mogale City	634,5	1,8
Western Cape	30 277,2	
City of Cape Town	17 180,6	56,7
Knysna	3 847,0	12,7
George	1 910,9	6,3
Overstrand	1 380,4	4,6
Mossel Bay	1 344,4	4,4
KwaZulu-Natal	18 876,2	
eThekweni	11 852,7	62,8
KwaDukuza	3 414,7	18,1
Msunduzi	1 217,7	6,5
Umngeni	924,5	4,9
Newcastle	401,2	2,1
Eastern Cape	8 411,9	
Nelson Mandela Bay	3 988,8	47,4
Buffalo City	2 640,8	31,4
Kouga	707,0	8,4
King Sabata Dalindyebo	547,0	6,5
Ndlambe	430,7	5,1

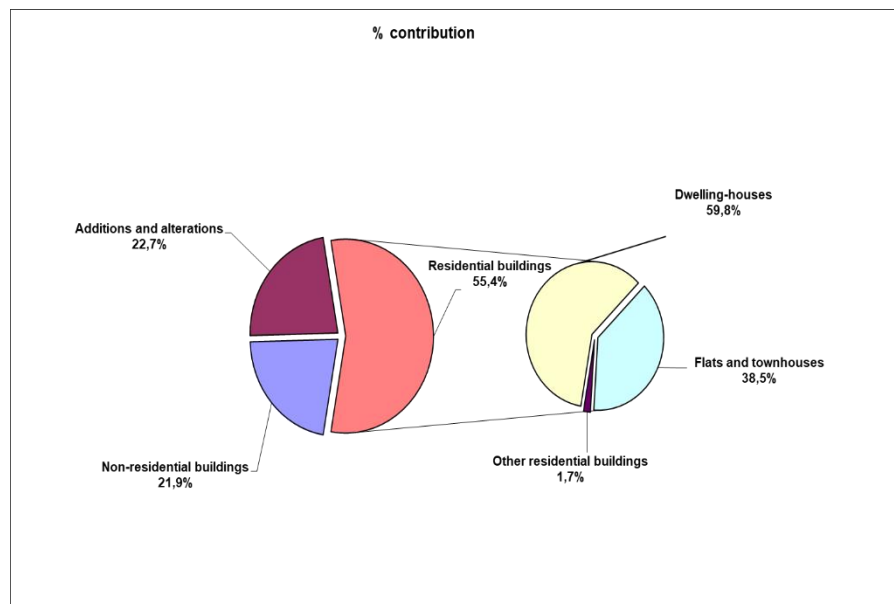
Table D – The largest municipal contributors to the value of recorded building plans passed for 2021 by province (concluded)

Province/municipality	Value of building plans passed at provincial/municipal level R million	Municipal % contribution to the value of building plans passed aggregated to provincial level
North West	4 580,9	
Tlokwe City Council	1 182,8	25,8
Rustenburg	1 014,3	22,1
Madibeng	919,4	20,1
Mahikeng	767,0	16,7
City of Matlosana	591,1	12,9
Mpumalanga	3 894,2	
City of Mbombela	1 129,7	29,0
Steve Tshwete	1 114,1	28,6
Emalahleni	1 034,9	26,6
Govan Mbeki	234,2	6,0
Nkomazi	167,2	4,3
Free State	2 480,1	
Mangaung	1 425,4	57,5
Dihlabeng	237,7	9,6
Matjhabeng	208,6	8,4
Metsimaholo	191,3	7,7
Maluti-a-Phofung	190,7	7,7
Limpopo	2 414,2	
Polokwane	1 454,9	60,3
Greater Tzaneen	370,5	15,3
Mogalakwena	279,4	11,6
Thabazimbi	144,1	6,0
Modimolle	105,0	4,3
Northern Cape	1 072,4	
Dawid Kruiper	530,7	49,5
Sol Plaatje	443,5	41,4
Ga-Segonyana	70,1	6,5
Kai !Garib	28,2	2,6

Value of buildings reported as completed to larger municipalities for 2021 by type of building

The value of buildings completed during 2021 amounted to R59 321,1 million, which is 20,8% higher than the R49 102,7 million reported for 2020. Residential buildings contributed the most to the total value of buildings completed (55,4% or R32 858,9 million), followed by additions and alterations (22,7% or R13 481,6 million) and non-residential buildings (21,9% or R12 980,6 million) – see Figure 4 and Table 8, pages 17 and 18.

Figure 4 – Percentage contribution of the value of type of building to the total value of buildings completed during 2021

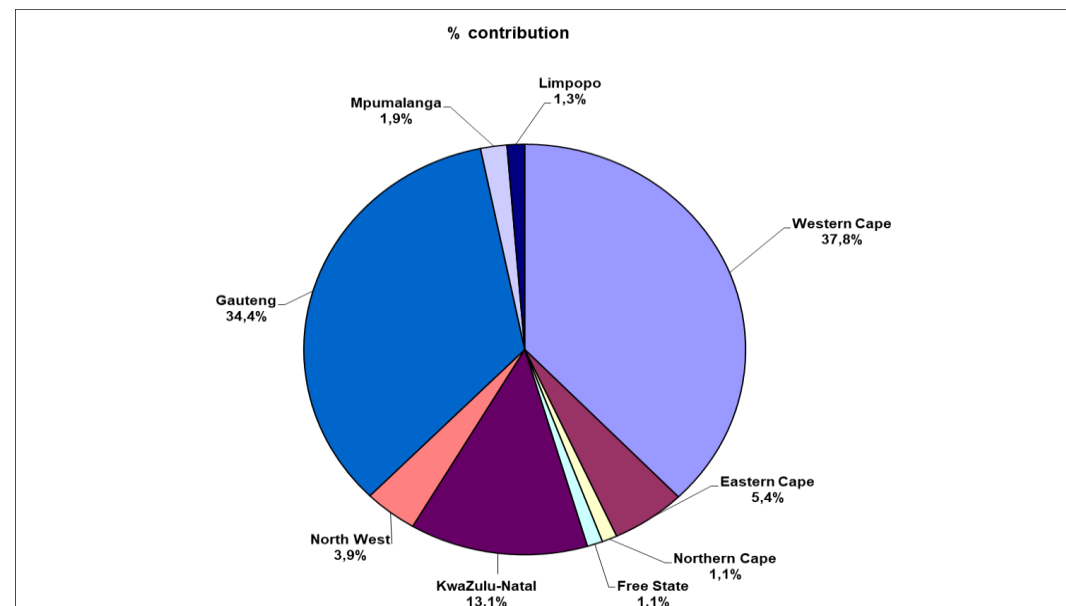


Regarding residential buildings completed, the largest contribution was dwelling-houses (59,8% or R19 642,2 million), followed by flats and townhouses (38,5% or R12 658,2 million) and ‘other’ residential buildings (1,7% or R558,5 million) – see Table 9, pages 19 and 20.

Value of buildings reported as completed to larger municipalities for 2021 by province

The largest provincial contributor to the total value of buildings completed during 2021 was Western Cape (contributing 37,8% or R22 396,0 million to the total of R59 321,1 million for South Africa), followed by Gauteng (34,4% or R20 414,1 million) and KwaZulu-Natal (13,1% or R7 745,3 million) – see Figure 5 and Table 8, pages 17 and 18. Table F (page xi) lists the largest municipal contributors to the value of buildings completed for 2021 by province.

Figure 5 – Provincial percentage contribution to the total value of buildings completed during 2021



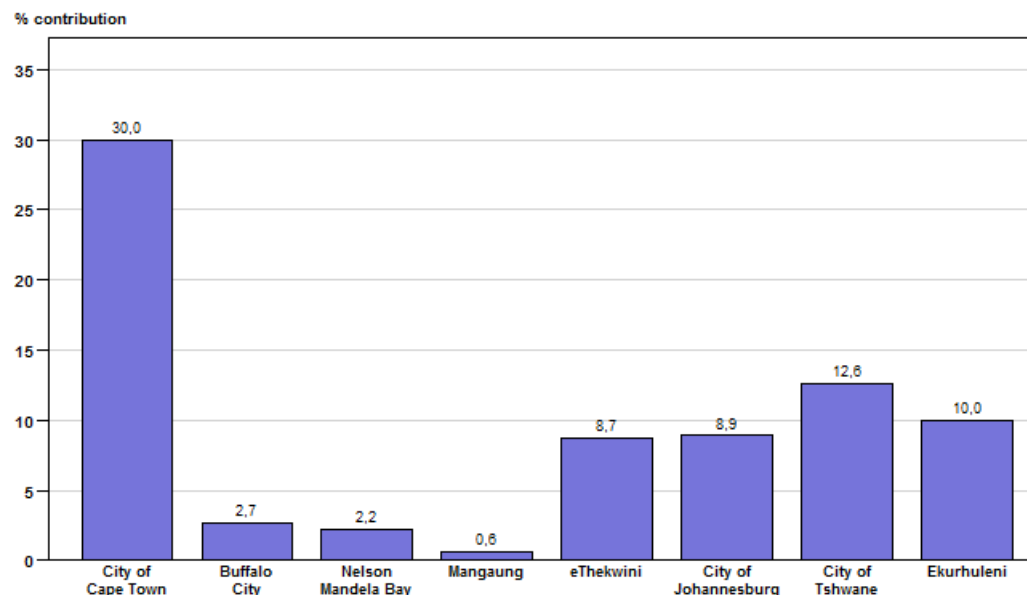
Value of buildings reported as completed to the eight metropolitan municipalities for 2021

The combined value of buildings completed for the eight metropolitan municipalities contributed 75,6% or R44 817,5 million to the total value of buildings completed (R59 321,1 million) during 2021 – see Table E and Table 8, pages 17 and 18.

Table E – Value of buildings reported as completed to the eight metropolitan municipalities for 2021

Metropolitan municipality	Value of buildings completed at metropolitan municipal level R million	Metropolitan municipal % contribution to the total value of buildings completed
City of Cape Town	17 788,5	30,0
Buffalo City	1 583,6	2,7
Nelson Mandela Bay	1 287,4	2,2
Mangaung	342,8	0,6
eThekwini	5 142,1	8,7
City of Johannesburg	5 297,2	8,9
City of Tshwane	7 462,5	12,6
Ekurhuleni	5 913,4	10,0
Total metropolitan municipalities	44 817,5	75,6

Figure 6 – Metropolitan percentage contribution to the total value of buildings reported as completed for 2021



The highest metropolitan contribution to the total value of buildings completed during 2021 was City of Cape Town (30,0% or R17 788,5 million), followed by City of Tshwane (12,6% or R7 462,5 million), Ekurhuleni (10,0% or R5 913,4 million), City of Johannesburg (8,9% or R5 297,2 million) and eThekwini (8,7% or R5 142,1 million) – see Table E and Figure 6.

Table F – The largest municipal contributors to the value of buildings reported as completed for 2021 by province

Province/municipality	Value of buildings completed at provincial/municipal level R million	Municipal % contribution to the value of buildings completed aggregated to provincial level
Western Cape	22 396,0	
City of Cape Town	17 788,5	79,4
George	895,5	4,0
Mossel Bay	756,8	3,4
Overstrand	614,8	2,7
Stellenbosch	483,2	2,2
Gauteng	20 414,1	
City of Tshwane	7 462,5	36,6
Ekurhuleni	5 913,4	29,0
City of Johannesburg	5 297,2	25,9
Midvaal	884,5	4,3
Mogale City	253,6	1,2
KwaZulu-Natal	7 745,3	
eThekweni	5 142,1	66,4
KwaDukuza	1 110,3	14,3
Umngeni	713,2	9,2
City of uMhlatuze	286,1	3,7
Newcastle	144,7	1,9
Eastern Cape	3 214,6	
Buffalo City	1 583,6	49,3
Nelson Mandela Bay	1 287,4	40,0
Kouga	193,0	6,0
Ndlambe	74,1	2,3
King Sabata Dalindyebo	60,4	1,9

Table F – The largest municipal contributors to the value of buildings reported as completed for 2021 by province (concluded)

Province/municipality	Value of buildings completed at provincial/municipal level R million	Municipal % contribution to the value of buildings completed aggregated to provincial level
North West	2 310,5	
Rustenburg	876,1	37,9
Madibeng	618,0	26,7
Tlokwe City Council	384,6	16,6
City of Matlosana	223,6	9,7
Mahikeng	184,2	8,0
Mpumalanga	1 142,5	
City of Mbombela	723,8	63,4
Emalaheni	304,4	26,6
Govan Mbeki	101,5	8,9
Nkomazi	7,5	0,7
Msukaligwa	5,2	0,5
Limpopo	765,3	
Polokwane	548,0	71,6
Greater Tzaneen	124,1	16,2
Mogalakwena	45,5	5,9
Modimolle	21,4	2,8
Free State	676,3	
Mangaung	342,8	50,7
Dihlabeng	121,6	18,0
Metsimaholo	96,4	14,3
Ngwathe	49,2	7,3
Matjhabeng	45,9	6,8
Northern Cape	656,4	
Dawid Kruiper	611,6	93,2
Sol Plaatje	42,0	6,4
Ga-Segonyana	2,8	0,4

Risenga Maluleke
Statistician-General

LIST OF DETAILED TABLES

PART 1 – MUNICIPAL REPORTING OF BUILDING PLANS PASSED AGGREGATED TO PROVINCIAL LEVEL

Table 1	- Number, square metres and value of recorded building plans passed by municipalities for residential buildings, non-residential buildings and additions and alterations by province	1
Table 2	- Number, square metres and value of recorded residential building plans passed by municipalities: dwelling-houses, flats and townhouses and other residential buildings by province.....	3
Table 3	- Number, square metres and value of recorded building plans passed by municipalities for dwelling-houses by size of dwelling-house and province.....	5
Table 4	- Number, square metres and value of recorded building plans passed by municipalities for flats and townhouses by province	7
Table 5	- Number, square metres and value of recorded building plans passed by municipalities for other residential buildings by province	9
Table 6.1	- Number, square metres and value of recorded non-residential building plans passed by municipalities: office and banking space, shopping space and industrial and warehouse space by province	11
Table 6.2	- Number, square metres and value of recorded non-residential building plans passed by municipalities: schools, nursery schools, crèches, hospitals, churches, sport clubs, recreation clubs and all other non-residential space by province	13
Table 7	- Number, square metres and value of recorded building plans passed by municipalities for additions and alterations by province	15

PART 2 – MUNICIPAL REPORTING OF BUILDINGS COMPLETED AGGREGATED TO PROVINCIAL LEVEL

Table 8	- Number, square metres and value of residential buildings, non-residential buildings and additions and alterations reported as completed to municipalities by province	17
Table 9	- Number, square metres and value of residential buildings reported as completed to municipalities: dwelling-houses, flats and townhouses and other residential buildings by province.....	19
Table 10	- Number, square metres and value of dwelling-houses reported as completed to municipalities by size of dwelling-house by province.....	21
Table 11	- Number, square metres and value of flats and townhouses reported as completed to municipalities by province	23
Table 12	- Number, square metres and value of other residential buildings reported as completed to municipalities by province	25
Table 13.1	- Number, square metres and value of non-residential buildings reported as completed to municipalities by province: office and banking space, shopping space and industrial and warehouse space	27
Table 13.2	- Number, square metres and value of non-residential buildings reported as completed to municipalities by province: schools, nursery schools, crèches, hospitals, churches, sport clubs, recreation clubs and all other non-residential space	29
Table 14	- Number, square metres and value of additions and alterations reported as completed to municipalities by province.....	31

LIST OF MUNICIPALITIES COVERED IN THE MONTHLY SURVEY

Table 15	- Municipalities covered in the monthly survey: Western Cape	33
Table 16	- Municipalities covered in the monthly survey: Eastern Cape	34
Table 17	- Municipalities covered in the monthly survey: Northern Cape	34
Table 18	- Municipalities covered in the monthly survey: Free State	35
Table 19	- Municipalities covered in the monthly survey: KwaZulu-Natal	36
Table 20	- Municipalities covered in the monthly survey: North West	37
Table 21	- Municipalities covered in the monthly survey: Gauteng	38
Table 22	- Municipalities covered in the monthly survey: Mpumalanga	39
Table 23	- Municipalities covered in the monthly survey: Limpopo	39

Part 1
**Municipal reporting of building plans passed
aggregated to provincial level**

Table 1 - Number, square metres and value of recorded building plans passed by municipalities for residential buildings, non-residential buildings and additions and alterations by province

Municipal reporting aggregated to provincial level by year		Residential buildings		Non-residential buildings			Additions and alterations			Recorded building plans passed by municipalities	
		Total square metres	Total value R'000	Number of buildings	Total square metres	Total value R'000	Number of plans	Total square metres	Total value R'000	Total square metres	Total value R'000
Western Cape	2019	1 840 950	13 031 773	462	872 356	6 340 755	12 992	1 148 364	9 072 678	3 861 670	28 445 206
	2020 *	1 592 979	11 365 754	333	663 793	4 972 093	10 833	906 441	7 113 969	3 163 213	23 451 816
	2021	2 450 676	17 677 141	428	549 014	3 829 516	12 952	1 130 030	8 770 568	4 129 720	30 277 225
Eastern Cape	2019	364 978	2 418 772	141	382 569	2 525 774	4 139	340 410	2 278 133	1 087 957	7 222 679
	2020 *	256 239	1 817 731	47	124 384	833 393	2 551	194 462	1 403 258	575 085	4 054 382
	2021	564 170	3 809 135	105	252 190	1 807 915	3 908	378 669	2 794 874	1 195 029	8 411 924
Northern Cape	2019	60 409	438 424	35	73 623	566 944	611	58 041	481 799	192 073	1 487 167
	2020	81 539	691 062	27	25 272	209 964	355	35 429	303 761	142 240	1 204 787
	2021	61 951	518 556	27	23 020	195 481	495	40 989	358 346	125 960	1 072 383
Free State	2019	206 120	1 432 625	49	75 128	494 722	1 480	144 483	1 151 806	425 731	3 079 153
	2020	137 349	1 041 371	32	37 080	242 198	989	97 654	764 460	272 083	2 048 029
	2021	173 892	1 342 615	39	50 491	330 431	1 118	108 008	807 041	332 391	2 480 087
KwaZulu-Natal	2019	810 905	7 852 780	233	595 306	4 262 325	4 854	540 259	5 912 196	1 946 470	18 027 301
	2020 *	633 811	6 463 063	118	459 359	3 358 974	2 835	317 014	3 494 419	1 410 184	13 316 456
	2021	877 303	8 999 693	182	679 493	4 458 534	4 082	519 562	5 417 962	2 076 358	18 876 189
North West	2019	274 412	1 561 129	58	69 173	425 467	1 323	116 688	729 174	460 273	2 715 770
	2020 *	284 273	1 531 878	60	110 328	663 390	1 223	123 761	791 687	518 362	2 986 955
	2021	378 928	2 461 002	77	158 267	945 988	1 605	167 709	1 173 940	704 904	4 580 930
Gauteng	2019	3 256 337	25 888 529	289	978 082	7 314 190	10 184	1 073 859	8 946 286	5 308 278	42 149 005
	2020 *	1 772 555	13 925 194	162	543 937	4 204 523	6 453	700 517	5 879 426	3 017 009	24 009 143
	2021	2 382 338	21 306 570	178	788 648	5 809 964	9 057	1 002 715	8 835 845	4 173 701	35 952 379
Mpumalanga	2019	251 286	1 580 658	100	184 453	1 203 485	1 731	151 886	1 265 799	587 625	4 049 942
	2020 *	275 741	1 848 968	100	164 357	1 129 386	1 347	112 022	782 384	552 120	3 760 738
	2021	382 778	2 428 799	52	56 019	362 607	2 257	167 622	1 102 767	606 419	3 894 173

*Revised.

Table 1 - Number, square metres and value of recorded building plans passed by municipalities for residential buildings, non-residential buildings and additions and alterations by province (concluded)

Municipal reporting aggregated to provincial level by year		Residential buildings		Non-residential buildings			Additions and alterations			Recorded building plans passed by municipalities	
		Total square metres	Total value R'000	Number of buildings	Total square metres	Total value R'000	Number of plans	Total square metres	Total value R'000	Total square metres	Total value R'000
Limpopo	2019	221 496	1 248 263	55	88 377	508 711	656	67 221	411 330	377 094	2 168 304
	2020	170 469	1 026 681	27	36 954	221 895	408	44 681	299 489	252 104	1 548 065
	2021	270 527	1 679 881	29	29 349	173 771	562	81 841	560 565	381 717	2 414 217
South Africa	2019	7 286 893	55 452 953	1 422	3 319 067	23 642 373	37 970	3 641 211	30 249 201	14 247 171	109 344 527
	2020 *	5 204 955	39 711 702	906	2 165 464	15 835 816	26 994	2 531 981	20 832 853	9 902 400	76 380 371
	2021	7 542 563	60 223 392	1 117	2 586 491	17 914 207	36 036	3 597 145	29 821 908	13 726 199	107 959 507

*Revised.

Table 2 - Number, square metres and value of recorded residential building plans passed by municipalities: dwelling-houses, flats and townhouses and other residential buildings by province

Municipal reporting aggregated to provincial level by year		Residential buildings										
		Dwelling-houses			Flats and townhouses			Other residential buildings and tourism accommodation ¹			Recorded residential building plans passed by municipalities	
		Number of dwelling-houses	Total square metres	Total value R'000	Number of units	Total square metres	Total value R'000	Number of buildings	Total square metres	Total value R'000	Total square metres	Total value R'000
Western Cape	2019	6 855	1 102 351	7 254 310	6 378	685 826	5 394 827	34	52 773	382 636	1 840 950	13 031 773
	2020 *	5 944	982 637	6 598 623	6 204	589 377	4 612 372	38	20 965	154 759	1 592 979	11 365 754
	2021	8 903	1 538 195	10 626 307	7 698	812 348	6 287 980	27	100 133	762 854	2 450 676	17 677 141
Eastern Cape	2019	1 460	277 676	1 856 076	769	87 029	560 738	1	273	1 958	364 978	2 418 772
	2020	1 007	207 573	1 472 735	484	44 814	317 096	2	3 852	27 900	256 239	1 817 731
	2021	4 177	467 235	3 099 613	765	91 068	665 622	9	5 867	43 900	564 170	3 809 135
Northern Cape	2019	354	56 290	403 609	44	3 826	32 247	1	293	2 568	60 409	438 424
	2020	218	48 061	400 759	258	27 969	244 845	11	5 509	45 458	81 539	691 062
	2021	279	52 808	439 641	145	9 143	78 915	0	0	0	61 951	518 556
Free State	2019	891	155 869	1 071 133	467	39 967	304 707	23	10 284	56 785	206 120	1 432 625
	2020	674	107 007	803 972	293	28 758	226 744	8	1 584	10 655	137 349	1 041 371
	2021	814	145 371	1 101 915	168	23 675	205 138	27	4 846	35 562	173 892	1 342 615
KwaZulu-Natal	2019	1 995	420 277	3 945 340	3 018	380 075	3 786 359	11	10 553	121 081	810 905	7 852 780
	2020	1 102	319 035	3 127 874	2 464	308 710	3 283 482	6	6 066	51 707	633 811	6 463 063
	2021	1 442	401 989	4 029 320	4 586	460 677	4 850 873	22	14 637	119 500	877 303	8 999 693
North West	2019	1 327	193 080	1 088 463	645	80 230	463 850	1	1 102	8 816	274 412	1 561 129
	2020	2 711	255 267	1 341 344	269	25 850	170 153	31	3 156	20 381	284 273	1 531 878
	2021	1 485	317 004	2 070 711	713	60 551	380 991	1	1 373	9 300	378 928	2 461 002
Gauteng	2019	12 532	1 708 940	12 569 575	12 681	1 538 168	13 252 895	6	9 229	66 059	3 256 337	25 888 529
	2020 *	8 225	1 034 327	7 687 101	6 671	736 664	6 228 535	2	1 564	9 558	1 772 555	13 925 194
	2021	9 521	1 551 058	13 095 569	8 636	817 461	8 092 849	5	13 819	118 152	2 382 338	21 306 570
Mpumalanga	2019	1 161	233 405	1 481 806	107	5 053	27 823	8	12 828	71 029	251 286	1 580 658
	2020 *	1 095	265 346	1 769 240	21	2 390	13 070	1	8 005	66 658	275 741	1 848 968
	2021	1 486	349 398	2 230 203	207	19 723	119 945	1	13 657	78 651	382 778	2 428 799

¹Institutions for the disabled, boarding houses, hotels and tourism accommodation e.g. hotels, motels, guest houses, holiday chalets, bed-and-breakfast accommodation and casinos.

*Revised.

Table 2 - Number, square metres and value of recorded residential building plans passed by municipalities: dwelling-houses, flats and townhouses and other residential buildings by province (concluded)

Municipal reporting aggregated to provincial level by year		Residential buildings										
		Dwelling-houses			Flats and townhouses			Other residential buildings and tourism accommodation ¹			Recorded residential building plans passed by municipalities	
		Number of dwelling-houses	Total square metres	Total value R'000	Number of units	Total square metres	Total value R'000	Number of buildings	Total square metres	Total value R'000	Total square metres	Total value R'000
Limpopo	2019	569	168 685	941 876	708	42 060	231 534	3	10 751	74 853	221 496	1 248 263
	2020	543	145 890	880 314	410	23 125	137 219	6	1 454	9 148	170 469	1 026 681
	2021	725	214 595	1 331 013	376	51 789	321 999	7	4 143	26 869	270 527	1 679 881
South Africa	2019	27 144	4 316 573	30 612 188	24 817	2 862 234	24 054 980	88	108 086	785 785	7 286 893	55 452 953
	2020 *	21 519	3 365 143	24 081 962	17 074	1 787 657	15 233 516	105	52 155	396 224	5 204 955	39 711 702
	2021	28 832	5 037 653	38 024 292	23 294	2 346 435	21 004 312	99	158 475	1 194 788	7 542 563	60 223 392

¹Institutions for the disabled, boarding houses, hotels and tourism accommodation e.g. hotels, motels, guest houses, holiday chalets, bed-and-breakfast accommodation and casinos.

*Revised.

Table 3 - Number, square metres and value of recorded building plans passed by municipalities for dwelling-houses by size of dwelling-house and province

Municipal reporting aggregated to provincial level by year		Size of dwelling-house									Recorded dwelling-house plans passed by municipalities		
		Equal to or smaller than 30 square metres			Larger than 30 square metres and smaller than 80 square metres			Equal to or larger than 80 square metres					
		Number of dwelling-houses	Total square metres	Total value R'000	Number of dwelling-houses	Total square metres	Total value R'000	Number of dwelling-houses	Total square metres	Total value R'000	Number of dwelling-houses	Total square metres	Total value R'000
Western Cape	2019	100	2 653	8 568	2 752	126 404	762 406	4 003	973 294	6 483 336	6 855	1 102 351	7 254 310
	2020	19	504	2 902	2 529	118 539	701 395	3 396	863 594	5 894 326	5 944	982 637	6 598 623
	2021	142	4 149	29 599	3 369	155 936	900 575	5 392	1 378 110	9 696 133	8 903	1 538 195	10 626 307
Eastern Cape	2019	0	0	0	321	19 765	125 600	1 139	257 911	1 730 476	1 460	277 676	1 856 076
	2020	0	0	0	185	11 009	67 815	822	196 564	1 404 920	1 007	207 573	1 472 735
	2021	0	0	0	2 830	128 258	583 412	1 347	338 977	2 516 201	4 177	467 235	3 099 613
Northern Cape	2019	0	0	0	150	7 100	34 069	204	49 190	369 540	354	56 290	403 609
	2020	0	0	0	22	1 173	10 126	196	46 888	390 633	218	48 061	400 759
	2021	1	24	210	72	4 111	35 735	206	48 673	403 696	279	52 808	439 641
Free State	2019	0	0	0	225	13 609	102 906	666	142 260	968 227	891	155 869	1 071 133
	2020	0	0	0	239	13 796	108 131	435	93 211	695 841	674	107 007	803 972
	2021	1	28	215	164	9 930	82 084	649	135 413	1 019 616	814	145 371	1 101 915
KwaZulu-Natal	2019	4	118	574	736	29 773	173 336	1 255	390 386	3 771 430	1 995	420 277	3 945 340
	2020	0	0	0	209	12 022	101 129	893	307 013	3 026 745	1 102	319 035	3 127 874
	2021	1	29	119	234	13 789	116 319	1 207	388 171	3 912 882	1 442	401 989	4 029 320
North West	2019	0	0	0	705	30 980	120 793	622	162 100	967 670	1 327	193 080	1 088 463
	2020	0	0	0	2 031	83 579	260 402	680	171 688	1 080 942	2 711	255 267	1 341 344
	2021	4	92	576	133	7 470	45 234	1 348	309 442	2 024 901	1 485	317 004	2 070 711
Gauteng	2019	1	25	208	8 512	471 294	2 305 155	4 019	1 237 621	10 264 212	12 532	1 708 940	12 569 575
	2020	1	28	98	5 651	279 328	1 323 420	2 573	754 971	6 363 583	8 225	1 034 327	7 687 101
	2021	0	0	0	5 410	285 784	1 883 121	4 111	1 265 274	11 212 448	9 521	1 551 058	13 095 569
Mpumalanga	2019	0	0	0	332	18 934	95 840	829	214 471	1 385 966	1 161	233 405	1 481 806
	2020	0	0	0	300	16 843	92 302	795	248 503	1 676 938	1 095	265 346	1 769 240
	2021	0	0	0	165	9 327	54 260	1 321	340 071	2 175 943	1 486	349 398	2 230 203

Table 3 - Number, square metres and value of recorded building plans passed by municipalities for dwelling-houses by size of dwelling-house and province (concluded)

Municipal reporting aggregated to provincial level by year		Size of dwelling-house									Recorded dwelling-house plans passed by municipalities		
		Equal to or smaller than 30 square metres			Larger than 30 square metres and smaller than 80 square metres			Equal to or larger than 80 square metres					
		Number of dwelling-houses	Total square metres	Total value R'000	Number of dwelling-houses	Total square metres	Total value R'000	Number of dwelling-houses	Total square metres	Total value R'000	Number of dwelling-houses	Total square metres	Total value R'000
Limpopo	2019	1	28	216	96	6 007	33 789	472	162 650	907 871	569	168 685	941 876
	2020	0	0	0	143	8 634	51 829	400	137 256	828 485	543	145 890	880 314
	2021	4	89	685	83	5 375	32 958	638	209 131	1 297 370	725	214 595	1 331 013
South Africa	2019	106	2 824	9 566	13 829	723 866	3 753 894	13 209	3 589 883	26 848 728	27 144	4 316 573	30 612 188
	2020	20	532	3 000	11 309	544 923	2 716 549	10 190	2 819 688	21 362 413	21 519	3 365 143	24 081 962
	2021	153	4 411	31 404	12 460	619 980	3 733 698	16 219	4 413 262	34 259 190	28 832	5 037 653	38 024 292

Table 4 - Number, square metres and value of recorded building plans passed by municipalities for flats and townhouses by province

Municipal reporting aggregated to provincial level by year		Flats			Townhouses			Recorded building plans passed for flats and townhouses by municipalities		
		Number of units	Total square metres	Total value R'000	Number of units	Total square metres	Total value R'000	Number of units	Total square metres	Total value R'000
Western Cape	2019	5 015	433 174	3 478 914	1 363	252 652	1 915 913	6 378	685 826	5 394 827
	2020 *	5 367	415 197	3 293 888	837	174 180	1 318 484	6 204	589 377	4 612 372
	2021	5 378	403 646	3 145 947	2 320	408 702	3 142 033	7 698	812 348	6 287 980
Eastern Cape	2019	322	28 507	166 360	447	58 522	394 378	769	87 029	560 738
	2020	228	16 926	119 693	256	27 888	197 403	484	44 814	317 096
	2021	450	34 231	239 490	315	56 837	426 132	765	91 068	665 622
Northern Cape	2019	22	1 732	14 202	22	2 094	18 045	44	3 826	32 247
	2020	10	641	5 513	248	27 328	239 332	258	27 969	244 845
	2021	20	1 277	10 983	125	7 866	67 932	145	9 143	78 915
Free State	2019	249	8 979	69 528	218	30 988	235 179	467	39 967	304 707
	2020	91	6 444	46 719	202	22 314	180 025	293	28 758	226 744
	2021	58	3 020	24 095	110	20 655	181 043	168	23 675	205 138
KwaZulu-Natal	2019	1 844	195 080	2 095 005	1 174	184 995	1 691 354	3 018	380 075	3 786 359
	2020	1 978	207 007	2 407 504	486	101 703	875 978	2 464	308 710	3 283 482
	2021	3 978	348 681	3 839 721	608	111 996	1 011 152	4 586	460 677	4 850 873
North West	2019	393	25 913	160 070	252	54 317	303 780	645	80 230	463 850
	2020	206	20 132	130 368	63	5 718	39 785	269	25 850	170 153
	2021	421	25 451	149 818	292	35 100	231 173	713	60 551	380 991
Gauteng	2019	2 882	188 855	1 891 942	9 799	1 349 313	11 360 953	12 681	1 538 168	13 252 895
	2020 *	815	56 365	626 567	5 856	680 299	5 601 968	6 671	736 664	6 228 535
	2021	2 985	239 938	2 604 767	5 651	577 523	5 488 082	8 636	817 461	8 092 849
Mpumalanga	2019	87	4 036	22 661	20	1 017	5 162	107	5 053	27 823
	2020	20	2 171	11 353	1	219	1 717	21	2 390	13 070
	2021	180	16 292	100 954	27	3 431	18 991	207	19 723	119 945

*Revised.

Table 4 - Number, square metres and value of recorded building plans passed by municipalities for flats and townhouses by province (concluded)

Municipal reporting aggregated to provincial level by year		Flats			Townhouses			Recorded building plans passed for flats and townhouses by municipalities		
		Number of units	Total square metres	Total value R'000	Number of units	Total square metres	Total value R'000	Number of units	Total square metres	Total value R'000
Limpopo	2019	530	26 238	145 272	178	15 822	86 262	708	42 060	231 534
	2020	12	900	5 640	398	22 225	131 579	410	23 125	137 219
	2021	46	3 133	19 057	330	48 656	302 942	376	51 789	321 999
South Africa	2019	11 344	912 514	8 043 954	13 473	1 949 720	16 011 026	24 817	2 862 234	24 054 980
	2020 *	8 727	725 783	6 647 245	8 347	1 061 874	8 586 271	17 074	1 787 657	15 233 516
	2021	13 516	1 075 669	10 134 832	9 778	1 270 766	10 869 480	23 294	2 346 435	21 004 312

*Revised.

Table 5 - Number, square metres and value of recorded building plans passed by municipalities for other residential buildings by province

Municipal reporting aggregated to provincial level by year		Other residential buildings								
		Tourism accommodation and casinos ¹			Other residential buildings excluding tourism accommodation ²			Recorded building plans passed by municipalities for other residential buildings		
		Number of buildings	Total square metres	Total value R'000	Number of buildings	Total square metres	Total value R'000	Number of buildings	Total square metres	Total value R'000
Western Cape	2019	11	41 110	295 701	23	11 663	86 935	34	52 773	382 636
	2020	13	5 945	46 555	25	15 020	108 204	38	20 965	154 759
	2021	5	41 432	311 824	22	58 701	451 030	27	100 133	762 854
Eastern Cape	2019	1	273	1 958	0	0	0	1	273	1 958
	2020	2	3 852	27 900	0	0	0	2	3 852	27 900
	2021	5	395	2 275	4	5 472	41 625	9	5 867	43 900
Northern Cape	2019	1	293	2 568	0	0	0	1	293	2 568
	2020	11	5 509	45 458	0	0	0	11	5 509	45 458
	2021	0	0	0	0	0	0	0	0	0
Free State	2019	3	2 157	13 382	20	8 127	43 403	23	10 284	56 785
	2020	0	0	0	8	1 584	10 655	8	1 584	10 655
	2021	3	1 577	13 508	24	3 269	22 054	27	4 846	35 562
KwaZulu-Natal	2019	2	1 374	16 350	9	9 179	104 731	11	10 553	121 081
	2020	3	5 531	47 629	3	535	4 078	6	6 066	51 707
	2021	9	8 257	75 987	13	6 380	43 513	22	14 637	119 500
North West	2019	0	0	0	1	1 102	8 816	1	1 102	8 816
	2020	30	2 075	13 400	1	1 081	6 981	31	3 156	20 381
	2021	0	0	0	1	1 373	9 300	1	1 373	9 300
Gauteng	2019	2	3 488	33 400	4	5 741	32 659	6	9 229	66 059
	2020	0	0	0	2	1 564	9 558	2	1 564	9 558
	2021	2	5 402	43 458	3	8 417	74 694	5	13 819	118 152
Mpumalanga	2019	7	12 617	69 375	1	211	1 654	8	12 828	71 029
	2020 *	0	0	0	1	8 005	66 658	1	8 005	66 658
	2021	1	13 657	78 651	0	0	0	1	13 657	78 651

¹Hotels, motels, guest houses, holiday chalets, bed-and-breakfast accommodation and casinos.

²Institutions for the disabled, boarding houses and hostels.

*Revised.

Table 5 - Number, square metres and value of recorded building plans passed by municipalities for other residential buildings by province (concluded)

Municipal reporting aggregated to provincial level by year		Other residential buildings								
		Tourism accommodation and casinos ¹			Other residential buildings excluding tourism accommodation ²			Recorded building plans passed by municipalities for other residential buildings		
		Number of buildings	Total square metres	Total value R'000	Number of buildings	Total square metres	Total value R'000	Number of buildings	Total square metres	Total value R'000
Limpopo	2019	1	3 478	21 407	2	7 273	53 446	3	10 751	74 853
	2020	5	1 332	8 364	1	122	784	6	1 454	9 148
	2021	1	747	4 805	6	3 396	22 064	7	4 143	26 869
South Africa	2019	28	64 790	454 141	60	43 296	331 644	88	108 086	785 785
	2020 *	64	24 244	189 306	41	27 911	206 918	105	52 155	396 224
	2021	26	71 467	530 508	73	87 008	664 280	99	158 475	1 194 788

¹Hotels, motels, guest houses, holiday chalets, bed-and-breakfast accommodation and casinos.

²Institutions for the disabled, boarding houses and hostels.

*Revised.

Table 6.1 - Number, square metres and value of recorded non-residential building plans passed by municipalities: office and banking space, shopping space and industrial and warehouse space

Municipal reporting aggregated to provincial level by year		Non-residential buildings								
		Office and banking space			Shopping space			Industrial and warehouse space		
		Number of buildings	Total square metres	Total value R'000	Number of buildings	Total square metres	Total value R'000	Number of buildings	Total square metres	Total value R'000
Western Cape	2019	29	67 852	524 076	37	128 317	1 050 298	222	397 110	2 836 752
	2020 *	48	104 701	860 088	51	140 331	1 136 166	117	279 108	1 960 125
	2021	35	58 759	430 115	42	80 621	608 544	128	265 386	1 802 581
Eastern Cape	2019	20	20 133	132 314	31	59 450	378 550	68	284 243	1 890 239
	2020	7	10 426	67 172	5	34 226	236 821	24	60 767	392 356
	2021	9	12 472	81 414	17	66 943	481 930	62	155 578	1 119 853
Northern Cape	2019	10	7 158	58 376	2	1 576	9 261	15	10 715	70 759
	2020	6	2 735	21 668	3	1 609	9 709	14	12 851	107 993
	2021	3	2 167	18 690	2	3 243	28 377	17	15 273	128 173
Free State	2019	9	8 802	61 406	16	15 743	91 731	10	22 754	136 834
	2020	4	5 965	47 988	3	887	6 378	19	26 411	157 689
	2021	1	1 047	9 379	11	13 473	101 444	14	11 518	72 761
KwaZulu-Natal	2019	19	41 427	403 627	45	91 764	883 748	128	418 062	2 584 496
	2020 *	9	8 846	84 353	20	132 024	1 106 084	53	282 415	1 849 238
	2021	14	26 636	245 701	34	41 578	406 983	105	580 964	3 564 808
North West	2019	6	5 170	29 654	17	25 797	164 978	9	6 675	36 678
	2020 *	4	5 998	39 406	21	72 601	433 373	22	24 705	146 619
	2021	5	1 547	9 237	30	115 964	681 078	12	18 316	116 042
Gauteng	2019	58	222 563	2 349 455	54	139 354	1 207 005	122	532 372	3 115 173
	2020 *	26	34 200	353 425	23	125 363	1 266 004	77	280 034	1 715 151
	2021	24	167 045	1 707 040	28	73 923	742 284	84	498 441	2 951 734
Mpumalanga	2019	16	32 646	209 536	22	66 614	487 960	45	44 598	247 591
	2020	15	50 683	340 614	8	22 488	158 461	65	64 621	443 710
	2021	3	1 246	9 438	14	12 623	80 801	25	36 345	238 960

*Revised.

Table 6.1 - Number, square metres and value of recorded non-residential building plans passed by municipalities: office and banking space, shopping space and industrial and warehouse space (concluded)

Municipal reporting aggregated to provincial level by year		Non-residential buildings								
		Office and banking space			Shopping space			Industrial and warehouse space		
		Number of buildings	Total square metres	Total value R'000	Number of buildings	Total square metres	Total value R'000	Number of buildings	Total square metres	Total value R'000
Limpopo	2019	7	10 088	55 746	22	40 665	242 706	16	29 229	164 680
	2020	1	623	3 592	4	4 213	26 168	9	27 923	164 689
	2021	2	1 443	8 694	5	2 700	17 256	16	23 051	135 429
South Africa	2019	174	415 839	3 824 190	246	569 280	4 516 237	635	1 745 758	11 083 202
	2020 *	120	224 177	1 818 306	138	533 742	4 379 164	400	1 058 835	6 937 570
	2021	96	272 362	2 519 708	183	411 068	3 148 697	463	1 604 872	10 130 341

*Revised.

Table 6.2 - Number, square metres and value of recorded non-residential building plans passed by municipalities: schools, nursery schools, crèches, hospitals, churches, sport clubs, recreation clubs and all other non-residential space

Municipal reporting aggregated to provincial level by year		Non-residential buildings											
		Schools, nursery schools, crèches and hospitals			Churches, sport and recreation clubs			All other non-residential space			Recorded non-residential building plans passed by municipalities ¹		
		Number of buildings	Total square metres	Total value R'000	Number of buildings	Total square metres	Total value R'000	Number of buildings	Total square metres	Total value R'000	Number of buildings	Total square metres	Total value R'000
Western Cape	2019	35	90 943	671 682	23	12 129	82 772	116	176 005	1 175 175	462	872 356	6 340 755
	2020	20	53 154	390 038	26	14 945	100 837	71	71 554	524 839	333	663 793	4 972 093
	2021	24	48 565	330 651	35	33 045	226 878	164	62 638	430 747	428	549 014	3 829 516
Eastern Cape	2019	6	10 879	77 033	6	4 105	23 473	10	3 759	24 165	141	382 569	2 525 774
	2020 *	3	16 871	122 457	2	923	5 993	6	1 171	8 594	47	124 384	833 393
	2021	7	8 400	61 132	5	7 155	51 402	5	1 642	12 184	105	252 190	1 807 915
Northern Cape	2019	2	51 775	412 494	6	2 399	16 054	0	0	0	35	73 623	566 944
	2020	2	7 403	64 906	2	674	5 688	0	0	0	27	25 272	209 964
	2021	1	361	2 925	3	1 941	17 010	1	35	306	27	23 020	195 481
Free State	2019	3	22 027	160 232	3	827	5 610	8	4 975	38 909	49	75 128	494 722
	2020	3	1 259	10 620	2	398	2 087	1	2 160	17 436	32	37 080	242 198
	2021	4	14 780	90 670	6	9 014	50 942	3	659	5 235	39	50 491	330 431
KwaZulu-Natal	2019	8	6 015	43 090	28	26 592	224 825	5	11 446	122 539	233	595 306	4 262 325
	2020	14	14 790	118 175	16	20 478	192 528	6	806	8 596	118	459 359	3 358 974
	2021	14	18 983	159 804	10	10 091	68 243	5	1 241	12 995	182	679 493	4 458 534
North West	2019	10	18 457	115 024	13	11 453	71 138	3	1 621	7 995	58	69 173	425 467
	2020	1	661	3 822	6	3 770	22 941	6	2 593	17 229	60	110 328	663 390
	2021	7	7 761	44 885	7	8 400	56 276	16	6 279	38 470	77	158 267	945 988
Gauteng	2019	17	34 821	289 028	27	33 184	228 543	11	15 788	124 986	289	978 082	7 314 190
	2020 *	17	69 876	620 201	16	33 139	234 926	3	1 325	14 816	162	543 937	4 204 523
	2021	19	27 435	217 462	6	15 641	141 275	17	6 163	50 169	178	788 648	5 809 964
Mpumalanga	2019	4	20 248	149 959	6	14 061	76 912	7	6 286	31 527	100	184 453	1 203 485
	2020	6	20 384	153 081	0	0	0	6	6 181	33 520	100	164 357	1 129 386
	2021	4	2 088	12 621	3	2 343	12 763	3	1 374	8 024	52	56 019	362 607

¹Office and banking space, shopping space, industrial and warehouse space, schools, nursery schools, crèches, hospitals, churches, sport clubs, recreation clubs and all other non-residential space (Tables 6.1 and 6.2).

*Revised.

Table 6.2 - Number, square metres and value of recorded non-residential building plans passed by municipalities: schools, nursery schools, crèches, hospitals, churches, sport clubs, recreation clubs and all other non-residential space (concluded)

Municipal reporting aggregated to provincial level by year		Non-residential buildings											
		Schools, nursery schools, crèches and hospitals			Churches, sport and recreation clubs			All other non-residential space			Recorded non-residential building plans passed by municipalities ¹		
		Number of buildings	Total square metres	Total value R'000	Number of buildings	Total square metres	Total value R'000	Number of buildings	Total square metres	Total value R'000	Number of buildings	Total square metres	Total value R'000
Limpopo	2019	4	4 903	26 316	4	1 436	7 408	2	2 056	11 855	55	88 377	508 711
	2020	1	874	5 039	5	2 406	16 777	7	915	5 630	27	36 954	221 895
	2021	2	980	6 176	1	353	1 817	3	822	4 399	29	29 349	173 771
South Africa	2019	89	260 068	1 944 858	116	106 186	736 735	162	221 936	1 537 151	1 422	3 319 067	23 642 373
	2020 *	67	185 272	1 488 339	75	76 733	581 777	106	86 705	630 660	906	2 165 464	15 835 816
	2021	82	129 353	926 326	76	87 983	626 606	217	80 853	562 529	1 117	2 586 491	17 914 207

¹Office and banking space, shopping space, industrial and warehouse space, schools, nursery schools, crèches, hospitals, churches, sport clubs, recreation clubs and all other non-residential space (Tables 6.1 and 6.2).

*Revised.

Table 7 - Number, square metres and value of recorded building plans passed by municipalities for additions and alterations by province

Municipal reporting aggregated to provincial level by year		Additions and alterations												
		Dwelling-houses			Other residential buildings			Non-residential buildings			Internal alterations	Recorded building plans passed for additions and alterations by municipalities		
		Number of plans	Total square metres	Total value R'000	Number of plans	Total square metres	Total value R'000	Number of plans	Total square metres	Total value R'000	Total value R'000	Number of plans	Total square metres	Total value R'000
Western Cape	2019	11 391	822 913	5 419 740	890	80 319	622 429	711	245 132	1 805 012	1 225 497	12 992	1 148 364	9 072 678
	2020	9 336	629 629	4 179 060	847	63 706	491 514	650	213 106	1 646 116	797 279	10 833	906 441	7 113 969
	2021	11 362	867 735	5 932 744	982	59 783	453 978	608	202 512	1 580 555	803 291	12 952	1 130 030	8 770 568
Eastern Cape	2019	3 758	252 836	1 663 946	88	4 745	30 462	293	82 829	539 266	44 459	4 139	340 410	2 278 133
	2020	2 373	159 417	1 119 381	24	915	6 510	154	34 130	239 498	37 869	2 551	194 462	1 403 258
	2021	3 559	268 642	1 952 931	53	4 058	29 313	296	105 969	778 645	33 985	3 908	378 669	2 794 874
Northern Cape	2019	586	48 624	386 165	1	175	1 534	24	9 242	70 990	23 110	611	58 041	481 799
	2020	336	31 118	262 785	1	13	114	18	4 298	36 508	4 354	355	35 429	303 761
	2021	471	37 727	311 315	2	482	4 163	22	2 780	23 392	19 476	495	40 989	358 346
Free State	2019	1 377	109 432	744 739	12	2 606	13 881	91	32 445	198 656	194 530	1 480	144 483	1 151 806
	2020	945	80 972	602 181	6	783	6 339	38	15 899	117 817	38 123	989	97 654	764 460
	2021	1 074	92 172	679 132	7	245	1 943	37	15 591	112 411	13 555	1 118	108 008	807 041
KwaZulu-Natal	2019	4 165	370 640	3 735 811	219	24 224	253 610	470	145 395	1 408 827	513 948	4 854	540 259	5 912 196
	2020	2 432	215 738	2 184 043	157	18 664	199 901	246	82 612	800 291	310 184	2 835	317 014	3 494 419
	2021	3 543	364 622	3 703 202	202	14 144	151 024	337	140 796	1 375 495	188 241	4 082	519 562	5 417 962
North West	2019	1 265	100 877	579 246	3	348	2 057	55	15 463	93 663	54 208	1 323	116 688	729 174
	2020	1 173	96 455	583 068	4	2 921	15 754	46	24 385	150 311	42 554	1 223	123 761	791 687
	2021	1 521	138 493	878 470	22	4 555	26 584	62	24 661	158 371	110 515	1 605	167 709	1 173 940
Gauteng	2019	9 809	914 507	7 589 743	111	18 637	131 502	264	140 715	1 053 376	171 665	10 184	1 073 859	8 946 286
	2020 *	6 080	566 302	4 796 097	231	35 126	237 547	142	99 089	751 276	94 506	6 453	700 517	5 879 426
	2021	8 783	865 406	7 710 830	62	13 257	139 848	212	124 052	852 367	132 800	9 057	1 002 715	8 835 845
Mpumalanga	2019	1 665	134 361	783 655	4	141	729	62	17 384	101 139	380 276	1 731	151 886	1 265 799
	2020	1 306	101 703	622 667	3	530	4 108	38	9 789	65 792	89 817	1 347	112 022	782 384
	2021	2 218	159 494	993 740	2	201	1 095	37	7 927	47 605	60 327	2 257	167 622	1 102 767

*Revised.

Table 7 - Number, square metres and value of recorded building plans passed by municipalities for additions and alterations by province (concluded)

Municipal reporting aggregated to provincial level by year		Additions and alterations												
		Dwelling-houses			Other residential buildings			Non-residential buildings			Internal alterations	Recorded building plans passed for additions and alterations by municipalities		
		Number of plans	Total square metres	Total value R'000	Number of plans	Total square metres	Total value R'000	Number of plans	Total square metres	Total value R'000	Total value R'000	Number of plans	Total square metres	Total value R'000
Limpopo	2019	559	60 762	344 165	71	2 969	16 792	26	3 490	19 530	30 843	656	67 221	411 330
	2020	380	38 283	231 412	9	1 144	6 454	19	5 254	30 673	30 950	408	44 681	299 489
	2021	524	57 724	359 572	14	4 750	30 586	24	19 367	115 081	55 326	562	81 841	560 565
South Africa	2019	34 575	2 814 952	21 247 210	1 399	134 164	1 072 996	1 996	692 095	5 290 459	2 638 536	37 970	3 641 211	30 249 201
	2020 *	24 361	1 919 617	14 580 694	1 282	123 802	968 241	1 351	488 562	3 838 282	1 445 636	26 994	2 531 981	20 832 853
	2021	33 055	2 852 015	22 521 936	1 346	101 475	838 534	1 635	643 655	5 043 922	1 417 516	36 036	3 597 145	29 821 908

*Revised.

Part 2
Municipal reporting of buildings completed
aggregated to provincial level

Table 8 - Number, square metres and value of residential, non-residential and additions and alterations reported as completed by province

Municipal reporting aggregated to provincial level by year		Residential buildings		Non-residential buildings			Additions and alterations			Buildings reported as completed to municipalities	
		Total square metres	Total value R'000	Number of buildings	Total square metres	Total value R'000	Number of plans	Total square metres	Total value R'000	Total square metres	Total value R'000
Western Cape	2019	1 640 860	11 888 519	276	708 591	5 267 303	7 048	611 222	4 852 803	2 960 673	22 008 625
	2020	1 113 169	8 013 370	161	404 038	2 959 416	5 976	616 278	5 410 782	2 133 485	16 383 568
	2021	1 541 173	10 981 121	257	574 551	4 223 793	8 789	874 562	7 191 113	2 990 286	22 396 027
Eastern Cape	2019	178 388	1 161 585	73	157 424	1 045 417	2 273	218 881	1 489 907	554 693	3 696 909
	2020	90 492	640 512	19	87 420	581 217	1 163	97 532	691 839	275 444	1 913 568
	2021	163 710	1 213 225	33	150 939	1 083 229	1 399	120 033	918 108	434 682	3 214 562
Northern Cape	2019	34 245	268 408	15	12 807	100 795	296	33 014	268 747	80 066	637 950
	2020	30 981	261 692	21	20 413	171 249	300	28 298	244 386	79 692	677 327
	2021	34 272	288 503	12	6 867	57 201	333	36 729	310 727	77 868	656 431
Free State	2019	45 725	281 774	15	15 309	97 228	497	36 438	230 690	97 472	609 692
	2020	41 675	314 297	12	25 748	204 935	126	12 533	99 120	79 956	618 352
	2021	56 999	447 099	12	11 706	91 790	235	20 294	137 445	88 999	676 334
KwaZulu-Natal	2019	528 711	5 721 703	124	608 700	4 577 357	1 793	219 144	2 547 449	1 356 555	12 846 509
	2020	352 098	3 727 797	71	480 266	3 098 939	977	114 543	1 319 329	946 907	8 146 065
	2021	360 066	3 724 992	125	256 830	2 056 216	1 239	170 917	1 964 054	787 813	7 745 262
North West	2019	214 967	1 255 473	41	51 094	280 766	575	60 883	371 049	326 944	1 907 288
	2020	153 470	1 001 986	22	36 246	228 759	233	27 827	204 936	217 543	1 435 681
	2021	181 433	1 188 744	24	137 350	822 565	312	40 788	299 236	359 571	2 310 545
Gauteng	2019	3 706 805	29 901 816	293	1 368 341	11 292 532	2 575	361 104	2 885 341	5 436 250	44 079 689
	2020	1 275 440	10 419 070	121	696 376	5 561 666	1 427	216 367	1 844 269	2 188 183	17 825 005
	2021	1 539 522	13 578 793	110	602 787	4 400 870	1 948	295 502	2 434 415	2 437 811	20 414 078
Mpumalanga	2019	221 661	1 342 326	31	66 143	431 691	622	51 338	561 184	339 142	2 335 201
	2020	96 796	664 728	21	47 833	358 728	298	24 938	184 984	169 567	1 208 440
	2021	104 988	793 890	18	29 203	193 191	172	16 162	155 407	150 353	1 142 488

Table 8 - Number, square metres and value of residential, non-residential and additions and alterations reported as completed by province (concluded)

Municipal reporting aggregated to provincial level by year		Residential buildings		Non-residential buildings			Additions and alterations			Buildings reported as completed to municipalities	
		Total square metres	Total value R'000	Number of buildings	Total square metres	Total value R'000	Number of plans	Total square metres	Total value R'000	Total square metres	Total value R'000
Limpopo	2019	120 018	671 783	20	21 783	120 159	91	9 199	64 907	151 000	856 849
	2020	88 583	528 188	19	50 264	298 014	69	10 019	68 518	148 866	894 720
	2021	103 916	642 534	14	8 660	51 762	86	8 627	71 047	121 203	765 343
South Africa	2019	6 691 380	52 493 387	888	3 010 192	23 213 248	15 770	1 601 223	13 272 077	11 302 795	88 978 712
	2020	3 242 704	25 571 640	467	1 848 604	13 462 923	10 569	1 148 335	10 068 163	6 239 643	49 102 726
	2021	4 086 079	32 858 901	605	1 778 893	12 980 617	14 513	1 583 614	13 481 552	7 448 586	59 321 070

Table 9 - Number, square metres and value of residential buildings reported as completed to municipalities: dwelling-houses, flats and townhouses and other residential buildings by province

Municipal reporting aggregated to provincial level by year		Residential buildings										
		Dwelling-houses			Flats and townhouses			Other residential buildings and tourism accommodation ¹			Residential buildings reported as completed to municipalities	
		Number of dwelling-houses	Total square metres	Total value R'000	Number of units	Total square metres	Total value R'000	Number of buildings	Total square metres	Total value R'000	Total square metres	Total value R'000
Western Cape	2019	5 889	912 924	6 142 823	6 237	711 978	5 619 123	6	15 958	126 573	1 640 860	11 888 519
	2020	4 610	669 216	4 450 852	3 968	431 812	3 474 162	10	12 141	88 356	1 113 169	8 013 370
	2021	6 610	866 004	5 732 065	7 890	649 352	5 046 123	22	25 817	202 933	1 541 173	10 981 121
Eastern Cape	2019	976	148 737	966 164	293	28 649	188 362	3	1 002	7 059	178 388	1 161 585
	2020	476	80 437	570 726	103	10 055	69 786	0	0	0	90 492	640 512
	2021	667	134 614	997 772	281	29 070	215 253	1	26	200	163 710	1 213 225
Northern Cape	2019	138	30 561	239 082	33	3 209	25 763	1	475	3 563	34 245	268 408
	2020	127	29 224	246 832	18	1 257	10 560	1	500	4 300	30 981	261 692
	2021	167	31 493	264 732	17	1 662	13 982	1	1 117	9 789	34 272	288 503
Free State	2019	236	41 168	251 709	36	2 108	12 755	11	2 449	17 310	45 725	281 774
	2020	216	31 362	231 051	36	10 313	83 246	0	0	0	41 675	314 297
	2021	446	52 382	408 764	35	4 012	33 393	5	605	4 942	56 999	447 099
KwaZulu-Natal	2019	868	235 500	2 514 738	1 931	281 374	3 079 574	2	11 837	127 391	528 711	5 721 703
	2020	691	162 448	1 717 932	1 489	173 764	1 832 094	6	15 886	177 771	352 098	3 727 797
	2021	701	194 968	2 034 877	1 108	141 030	1 430 466	3	24 068	259 649	360 066	3 724 992
North West	2019	845	158 592	918 947	655	49 678	298 125	4	6 697	38 401	214 967	1 255 473
	2020	578	112 112	721 094	412	38 780	264 269	3	2 578	16 623	153 470	1 001 986
	2021	871	156 329	1 023 179	217	25 104	165 565	0	0	0	181 433	1 188 744
Gauteng	2019	9 303	1 308 033	10 102 642	15 935	2 367 303	19 537 989	5	31 469	261 185	3 706 805	29 901 816
	2020	6 477	753 664	5 757 041	3 896	516 550	4 610 428	3	5 226	51 601	1 275 440	10 419 070
	2021	6 682	940 682	7 925 665	5 785	597 429	5 639 712	3	1 411	13 416	1 539 522	13 578 793
Mpumalanga	2019	1 125	193 249	1 192 503	219	28 412	149 823	0	0	0	221 661	1 342 326
	2020	517	89 956	619 497	47	6 840	45 231	0	0	0	96 796	664 728
	2021	526	94 125	708 280	34	2 858	18 952	1	8 005	66 658	104 988	793 890

¹Institutions for the disables, boarding houses, hotels and tourism accommodation e.g. hotels, motels, guest houses, holiday chalets, bed-and-breakfast accommodation and casinos.

Table 9 - Number, square metres and value of residential buildings reported as completed to municipalities: dwelling-houses, flats and townhouses and other residential buildings by province (concluded)

Municipal reporting aggregated to provincial level by year		Residential buildings										
		Dwelling-houses			Flats and townhouses			Other residential buildings and tourism accommodation ¹			Residential buildings reported as completed to municipalities	
		Number of dwelling-houses	Total square metres	Total value R'000	Number of units	Total square metres	Total value R'000	Number of buildings	Total square metres	Total value R'000	Total square metres	Total value R'000
Limpopo	2019	452	100 885	563 918	174	18 615	104 814	3	518	3 051	120 018	671 783
	2020	301	70 940	420 606	216	16 883	103 003	1	760	4 579	88 583	528 188
	2021	406	88 631	546 868	154	15 145	94 766	1	140	900	103 916	642 534
South Africa	2019	19 832	3 129 649	22 892 526	25 513	3 491 326	29 016 328	35	70 405	584 533	6 691 380	52 493 387
	2020	13 993	1 999 359	14 735 631	10 185	1 206 254	10 492 779	24	37 091	343 230	3 242 704	25 571 640
	2021	17 076	2 559 228	19 642 202	15 521	1 465 662	12 658 212	37	61 189	558 487	4 086 079	32 858 901

¹Institutions for the disabled, boarding houses, hotels and tourism accommodation e.g. hotels, motels, guest houses, holiday chalets, bed-and-breakfast accommodation and casinos.

Table 10 - Number, square metres and value of dwelling-houses reported as completed to municipalities by size of dwelling-house by province

Municipal reporting aggregated to provincial level by year		Size of dwelling-house									Dwelling-houses reported as completed to municipalities		
		Equal to or smaller than 30 square metres			Larger than 30 square metres and smaller than 80 square metres			Equal to or larger than 80 square metres					
		Number of dwelling-houses	Total square metres	Total value R'000	Number of dwelling-houses	Total square metres	Total value R'000	Number of dwelling-houses	Total square metres	Total value R'000	Number of dwelling-houses	Total square metres	Total value R'000
Western Cape	2019	16	462	3 736	2 648	122 927	727 780	3 225	789 535	5 411 307	5 889	912 924	6 142 823
	2020	25	563	1 867	2 251	102 760	576 830	2 334	565 893	3 872 155	4 610	669 216	4 450 852
	2021	8	210	1 151	3 657	164 352	936 349	2 945	701 442	4 794 565	6 610	866 004	5 732 065
Eastern Cape	2019	0	0	0	351	16 697	85 839	625	132 040	880 325	976	148 737	966 164
	2020	0	0	0	106	6 211	39 290	370	74 226	531 436	476	80 437	570 726
	2021	0	0	0	167	9 312	62 422	500	125 302	935 350	667	134 614	997 772
Northern Cape	2019	0	0	0	40	2 464	19 579	98	28 097	219 503	138	30 561	239 082
	2020	0	0	0	5	308	2 650	122	28 916	244 182	127	29 224	246 832
	2021	0	0	0	37	2 449	21 265	130	29 044	243 467	167	31 493	264 732
Free State	2019	0	0	0	51	3 130	22 735	185	38 038	228 974	236	41 168	251 709
	2020	0	0	0	109	6 595	53 338	107	24 767	177 713	216	31 362	231 051
	2021	0	0	0	241	14 579	123 155	205	37 803	285 609	446	52 382	408 764
KwaZulu-Natal	2019	6	175	771	137	8 041	70 159	725	227 284	2 443 808	868	235 500	2 514 738
	2020	2	57	239	129	7 782	77 987	560	154 609	1 639 706	691	162 448	1 717 932
	2021	1	30	126	85	4 966	48 850	615	189 972	1 985 901	701	194 968	2 034 877
North West	2019	0	0	0	50	3 212	17 756	795	155 380	901 191	845	158 592	918 947
	2020	0	0	0	104	6 175	35 564	474	105 937	685 530	578	112 112	721 094
	2021	2	49	321	230	13 869	81 620	639	142 411	941 238	871	156 329	1 023 179
Gauteng	2019	0	0	0	5 944	313 390	1 786 775	3 359	994 643	8 315 867	9 303	1 308 033	10 102 642
	2020	0	0	0	4 529	237 891	1 440 455	1 948	515 773	4 316 586	6 477	753 664	5 757 041
	2021	0	0	0	3 946	215 865	1 511 149	2 736	724 817	6 414 516	6 682	940 682	7 925 665
Mpumalanga	2019	0	0	0	487	28 620	149 334	638	164 629	1 043 169	1 125	193 249	1 192 503
	2020	0	0	0	178	9 633	50 811	339	80 323	568 686	517	89 956	619 497
	2021	0	0	0	164	9 181	58 086	362	84 944	650 194	526	94 125	708 280

Table 10 - Number, square metres and value of dwelling-houses reported as completed to municipalities by size of dwelling-house by province (concluded)

Municipal reporting aggregated to provincial level by year		Size of dwelling-house									Dwelling-houses reported as completed to municipalities		
		Equal to or smaller than 30 square metres			Larger than 30 square metres and smaller than 80 square metres			Equal to or larger than 80 square metres					
		Number of dwelling-houses	Total square metres	Total value R'000	Number of dwelling-houses	Total square metres	Total value R'000	Number of dwelling-houses	Total square metres	Total value R'000	Number of dwelling-houses	Total square metres	Total value R'000
Limpopo	2019	0	0	0	106	6 670	35 683	346	94 215	528 235	452	100 885	563 918
	2020	0	0	0	92	5 309	31 783	209	65 631	388 823	301	70 940	420 606
	2021	0	0	0	123	7 514	47 129	283	81 117	499 739	406	88 631	546 868
South Africa	2019	22	637	4 507	9 814	505 151	2 915 640	9 996	2 623 861	19 972 379	19 832	3 129 649	22 892 526
	2020	27	620	2 106	7 503	382 664	2 308 708	6 463	1 616 075	12 424 817	13 993	1 999 359	14 735 631
	2021	11	289	1 598	8 650	442 087	2 890 025	8 415	2 116 852	16 750 579	17 076	2 559 228	19 642 202

Table 11 - Number, square metres and value of flats and townhouses reported as completed to municipalities by province

Municipal reporting aggregated to provincial level by year		Flats			Townhouses			Flats and townhouses reported as completed to municipalities		
		Number of units	Total square metres	Total value R'000	Number of units	Total square metres	Total value R'000	Number of units	Total square metres	Total value R'000
Western Cape	2019	5 018	480 815	3 867 234	1 219	231 163	1 751 889	6 237	711 978	5 619 123
	2020	3 338	302 835	2 471 077	630	128 977	1 003 085	3 968	431 812	3 474 162
	2021	6 519	450 085	3 499 947	1 371	199 267	1 546 176	7 890	649 352	5 046 123
Eastern Cape	2019	128	7 838	50 988	165	20 811	137 374	293	28 649	188 362
	2020	16	970	7 013	87	9 085	62 773	103	10 055	69 786
	2021	92	4 814	33 941	189	24 256	181 312	281	29 070	215 253
Northern Cape	2019	0	0	0	33	3 209	25 763	33	3 209	25 763
	2020	0	0	0	18	1 257	10 560	18	1 257	10 560
	2021	0	0	0	17	1 662	13 982	17	1 662	13 982
Free State	2019	34	1 599	9 385	2	509	3 370	36	2 108	12 755
	2020	0	0	0	36	10 313	83 246	36	10 313	83 246
	2021	33	3 640	30 703	2	372	2 690	35	4 012	33 393
KwaZulu-Natal	2019	1 517	196 125	2 331 855	414	85 249	747 719	1 931	281 374	3 079 574
	2020	957	103 205	1 173 827	532	70 559	658 267	1 489	173 764	1 832 094
	2021	715	82 450	929 006	393	58 580	501 460	1 108	141 030	1 430 466
North West	2019	569	38 376	236 713	86	11 302	61 412	655	49 678	298 125
	2020	315	27 758	188 028	97	11 022	76 241	412	38 780	264 269
	2021	145	13 012	83 812	72	12 092	81 753	217	25 104	165 565
Gauteng	2019	3 854	228 632	2 345 155	12 081	2 138 671	17 192 834	15 935	2 367 303	19 537 989
	2020	590	40 715	461 740	3 306	475 835	4 148 688	3 896	516 550	4 610 428
	2021	1 207	91 221	1 058 996	4 578	506 208	4 580 716	5 785	597 429	5 639 712
Mpumalanga	2019	0	0	0	219	28 412	149 823	219	28 412	149 823
	2020	20	3 315	25 993	27	3 525	19 238	47	6 840	45 231
	2021	8	317	2 640	26	2 541	16 312	34	2 858	18 952

Table 11 - Number, square metres and value of flats and townhouses reported as completed to municipalities by province (concluded)

Municipal reporting aggregated to provincial level by year		Flats			Townhouses			Flats and townhouses reported as completed to municipalities		
		Number of units	Total square metres	Total value R'000	Number of units	Total square metres	Total value R'000	Number of units	Total square metres	Total value R'000
Limpopo	2019	18	1 226	7 036	156	17 389	97 778	174	18 615	104 814
	2020	66	3 662	22 949	150	13 221	80 054	216	16 883	103 003
	2021	0	0	0	154	15 145	94 766	154	15 145	94 766
South Africa	2019	11 138	954 611	8 848 366	14 375	2 536 715	20 167 962	25 513	3 491 326	29 016 328
	2020	5 302	482 460	4 350 627	4 883	723 794	6 142 152	10 185	1 206 254	10 492 779
	2021	8 719	645 539	5 639 045	6 802	820 123	7 019 167	15 521	1 465 662	12 658 212

Table 12 - Number, square metres and value of other residential buildings reported as completed to municipalities by province

Municipal reporting aggregated to provincial level by year		Other residential buildings								
		Tourism accommodation and casinos ¹			Other residential buildings excluding tourism accommodation ²			Other residential buildings reported as completed to municipalities		
		Number of buildings	Total square metres	Total value R'000	Number of buildings	Total square metres	Total value R'000	Number of buildings	Total square metres	Total value R'000
Western Cape	2019	2	1 168	6 325	4	14 790	120 248	6	15 958	126 573
	2020	1	500	3 633	9	11 641	84 723	10	12 141	88 356
	2021	4	3 737	25 576	18	22 080	177 357	22	25 817	202 933
Eastern Cape	2019	2	510	3 746	1	492	3 313	3	1 002	7 059
	2020	0	0	0	0	0	0	0	0	0
	2021	0	0	0	1	26	200	1	26	200
Northern Cape	2019	1	475	3 563	0	0	0	1	475	3 563
	2020	1	500	4 300	0	0	0	1	500	4 300
	2021	1	1 117	9 789	0	0	0	1	1 117	9 789
Free State	2019	4	1 754	12 954	7	695	4 356	11	2 449	17 310
	2020	0	0	0	0	0	0	0	0	0
	2021	0	0	0	5	605	4 942	5	605	4 942
KwaZulu-Natal	2019	2	11 837	127 391	0	0	0	2	11 837	127 391
	2020	2	3 671	43 685	4	12 215	134 086	6	15 886	177 771
	2021	2	23 862	258 147	1	206	1 502	3	24 068	259 649
North West	2019	3	4 875	26 338	1	1 822	12 063	4	6 697	38 401
	2020	1	1 318	7 513	2	1 260	9 110	3	2 578	16 623
	2021	0	0	0	0	0	0	0	0	0
Gauteng	2019	0	0	0	5	31 469	261 185	5	31 469	261 185
	2020	1	3 254	31 694	2	1 972	19 907	3	5 226	51 601
	2021	0	0	0	3	1 411	13 416	3	1 411	13 416
Mpumalanga	2019	0	0	0	0	0	0	0	0	0
	2020	0	0	0	0	0	0	0	0	0
	2021	0	0	0	1	8 005	66 658	1	8 005	66 658

¹Hotels, motels, guest houses, chalets, bed-and-breakfast accommodation and casinos

²Institutions for the disabled, boarding houses and hostels.

Table 12 - Number, square metres and value of other residential buildings reported as completed to municipalities by province (concluded)

Municipal reporting aggregated to provincial level by year		Other residential buildings								
		Tourism accommodation and casinos ¹			Other residential buildings excluding tourism accommodation ²			Other residential buildings reported as completed to municipalities		
		Number of buildings	Total square metres	Total value R'000	Number of buildings	Total square metres	Total value R'000	Number of buildings	Total square metres	Total value R'000
Limpopo	2019	0	0	0	3	518	3 051	3	518	3 051
	2020	1	760	4 579	0	0	0	1	760	4 579
	2021	0	0	0	1	140	900	1	140	900
South Africa	2019	14	20 619	180 317	21	49 786	404 216	35	70 405	584 533
	2020	7	10 003	95 404	17	27 088	247 826	24	37 091	343 230
	2021	7	28 716	293 512	30	32 473	264 975	37	61 189	558 487

¹Hotels, motels, guest houses, chalets, bed-and-breakfast accommodation and casinos

²Institutions for the disabled, boarding houses and hostels.

Table 13.1 - Number, square metres and value of recorded non-residential buildings reported as completed to municipalities by province: office and banking space, shopping space and industrial and warehouse space

Municipal reporting aggregated to provincial level by year		Non-residential buildings								
		Office and banking space			Shopping space			Industrial and warehouse space		
		Number of buildings	Total square metres	Total value R'000	Number of buildings	Total square metres	Total value R'000	Number of buildings	Total square metres	Total value R'000
Western Cape	2019	17	73 610	598 695	24	133 733	1 138 349	165	342 000	2 346 058
	2020	18	87 562	708 327	19	90 562	710 509	71	151 424	1 017 617
	2021	25	101 600	824 807	42	109 695	895 455	98	305 719	2 111 329
Eastern Cape	2019	8	13 191	84 518	10	9 307	61 423	38	103 744	699 035
	2020	2	1 070	7 047	2	2 369	17 128	9	82 129	547 435
	2021	5	12 747	89 972	4	3 605	23 466	16	115 471	827 859
Northern Cape	2019	4	1 098	8 743	0	0	0	8	10 603	83 425
	2020	1	400	3 440	1	4 775	39 155	14	13 768	116 214
	2021	4	1 040	8 562	2	1 190	10 429	3	4 188	34 475
Free State	2019	4	2 239	11 872	1	234	1 565	8	11 980	77 048
	2020	2	6 713	54 187	2	3 620	28 517	8	15 415	122 231
	2021	1	147	1 091	2	538	3 640	6	6 315	46 469
KwaZulu-Natal	2019	10	118 241	1 290 650	22	65 039	677 726	70	375 767	2 266 139
	2020	8	29 615	302 696	16	17 559	147 588	37	418 962	2 518 306
	2021	11	27 611	286 860	46	111 176	1 028 371	60	111 282	692 660
North West	2019	5	4 900	24 401	15	19 240	115 658	9	14 617	74 123
	2020	5	5 785	35 774	10	21 516	140 758	5	6 751	39 972
	2021	3	7 339	42 368	13	119 727	709 928	7	9 764	66 276
Gauteng	2019	47	363 182	3 846 968	109	346 419	3 391 428	96	520 196	3 022 906
	2020	17	254 755	2 527 988	26	78 085	807 222	62	340 737	2 046 428
	2021	9	30 407	374 815	19	115 114	1 158 117	55	379 629	2 191 974
Mpumalanga	2019	8	16 919	126 493	9	28 238	185 481	8	14 229	85 066
	2020	1	863	4 573	4	20 575	161 328	10	16 809	120 082
	2021	7	6 989	55 890	3	7 840	51 456	7	10 410	62 457

Table 13.1 - Number, square metres and value of recorded non-residential buildings reported as completed to municipalities by province: office and banking space, shopping space and industrial and warehouse space (concluded)

Municipal reporting aggregated to provincial level by year		Non-residential buildings								
		Office and banking space			Shopping space			Industrial and warehouse space		
		Number of buildings	Total square metres	Total value R'000	Number of buildings	Total square metres	Total value R'000	Number of buildings	Total square metres	Total value R'000
Limpopo	2019	3	1 997	11 034	7	8 432	47 970	7	9 504	52 102
	2020	3	8 190	49 282	2	964	5 558	9	30 673	185 039
	2021	3	1 029	6 223	2	2 580	14 078	5	2 181	13 734
South Africa	2019	106	595 377	6 003 374	197	610 642	5 619 600	409	1 402 640	8 705 902
	2020	57	394 953	3 693 314	82	240 025	2 057 763	225	1 076 668	6 713 324
	2021	68	188 909	1 690 588	133	471 465	3 894 940	257	944 959	6 047 233

Table 13.2 - Number, square metres and value of non-residential buildings reported as completed to municipalities by province: schools, nursery schools, crèches, hospitals, churches, sport clubs, recreation clubs and all other non-residential space

Municipal reporting aggregated to provincial level by year		Non-residential buildings									Non-residential buildings reported as completed to municipalities ¹		
		Schools, nursery schools, crèches and hospitals			Churches, sport and recreation clubs			All other non-residential space					
		Number of buildings	Total square metres	Total value R'000	Number of buildings	Total square metres	Total value R'000	Number of buildings	Total square metres	Total value R'000	Number of buildings	Total square metres	Total value R'000
Western Cape	2019	26	85 401	671 532	11	7 373	47 485	33	66 474	465 184	276	708 591	5 267 303
	2020	14	40 594	290 523	10	9 065	60 748	29	24 831	171 692	161	404 038	2 959 416
	2021	19	26 911	189 830	11	12 156	84 166	62	18 470	118 206	257	574 551	4 223 793
Eastern Cape	2019	2	25 810	163 758	4	3 430	23 887	11	1 942	12 796	73	157 424	1 045 417
	2020	2	1 263	6 947	1	375	1 533	3	214	1 127	19	87 420	581 217
	2021	4	17 160	127 844	3	1 921	13 843	1	35	245	33	150 939	1 083 229
Northern Cape	2019	1	760	6 232	2	346	2 395	0	0	0	15	12 807	100 795
	2020	1	189	1 550	4	1 281	10 890	0	0	0	21	20 413	171 249
	2021	0	0	0	3	449	3 735	0	0	0	12	6 867	57 201
Free State	2019	1	378	3 051	1	478	3 692	0	0	0	15	15 309	97 228
	2020	0	0	0	0	0	0	0	0	0	12	25 748	204 935
	2021	1	4 235	37 937	1	408	2 213	1	63	440	12	11 706	91 790
KwaZulu-Natal	2019	3	21 207	109 383	10	11 532	107 698	9	16 914	125 761	124	608 700	4 577 357
	2020	4	8 072	89 450	4	5 805	38 015	2	253	2 884	71	480 266	3 098 939
	2021	5	3 429	27 107	3	3 332	21 218	0	0	0	125	256 830	2 056 216
North West	2019	5	8 191	43 682	6	3 946	21 909	1	200	993	41	51 094	280 766
	2020	2	2 194	12 255	0	0	0	0	0	0	22	36 246	228 759
	2021	0	0	0	1	520	3 993	0	0	0	24	137 350	822 565
Gauteng	2019	26	101 996	748 339	10	26 100	203 219	5	10 448	79 672	293	1 368 341	11 292 532
	2020	9	19 476	154 128	3	2 045	14 208	4	1 278	11 692	121	696 376	5 561 666
	2021	14	53 158	505 112	7	16 418	101 889	6	8 061	68 963	110	602 787	4 400 870
Mpumalanga	2019	2	773	4 009	1	2 771	14 686	3	3 213	15 956	31	66 143	431 691
	2020	3	9 403	71 753	0	0	0	3	183	992	21	47 833	358 728
	2021	0	0	0	1	3 964	23 388	0	0	0	18	29 203	193 191

¹Office and banking space, shopping space, industrial and warehouse space, schools, nursery schools, crèches, hospitals, churches, sport clubs, recreation clubs and all other non-residential space (Tables 13.1 and 13.2).

Table 13.2 - Number, square metres and value of non-residential buildings reported as completed to municipalities by province: schools, nursery schools, crèches, hospitals, churches, sport clubs, recreation clubs and all other non-residential space (concluded)

Municipal reporting aggregated to provincial level by year		Non-residential buildings									Non-residential buildings reported as completed to municipalities ¹		
		Schools, nursery schools, crèches and hospitals			Churches, sport and recreation clubs			All other non-residential space					
		Number of buildings	Total square metres	Total value R'000	Number of buildings	Total square metres	Total value R'000	Number of buildings	Total square metres	Total value R'000	Number of buildings	Total square metres	Total value R'000
Limpopo	2019	1	1 072	4 761	0	0	0	2	778	4 292	20	21 783	120 159
	2020	2	5 535	29 810	1	2 976	17 160	2	1 926	11 165	19	50 264	298 014
	2021	0	0	0	1	1 752	11 269	3	1 118	6 458	14	8 660	51 762
South Africa	2019	67	245 588	1 754 747	45	55 976	424 971	64	99 969	704 654	888	3 010 192	23 213 248
	2020	37	86 726	656 416	23	21 547	142 554	43	28 685	199 552	467	1 848 604	13 462 923
	2021	43	104 893	887 830	31	40 920	265 714	73	27 747	194 312	605	1 778 893	12 980 617

¹Office and banking space, shopping space, industrial and warehouse space, schools, nursery schools, crèches, hospitals, churches, sport clubs, recreation clubs and all other non-residential space (Tables 13.1 and 13.2).

Table 14 - Number, square metres and value of additions and alterations reported as completed to municipalities by province

Municipal reporting aggregated to provincial level by year		Additions and alterations												
		Dwelling-houses			Other residential buildings			Non-residential buildings			Internal alterations	Additions and alterations reported as completed to municipalities		
		Number of plans	Total square metres	Total value R'000	Number of plans	Total square metres	Total value R'000	Number of plans	Total square metres	Total value R'000	Total value R'000	Number of plans	Total square metres	Total value R'000
Western Cape	2019	5 894	385 376	2 541 932	664	52 476	435 331	490	173 370	1 249 963	625 577	7 048	611 222	4 852 803
	2020	4 892	331 756	2 306 133	596	73 424	574 074	488	211 098	1 490 391	1 040 184	5 976	616 278	5 410 782
	2021	7 423	545 621	3 590 447	683	43 143	345 496	683	285 798	2 040 232	1 214 938	8 789	874 562	7 191 113
Eastern Cape	2019	2 098	151 764	997 354	28	3 293	21 996	147	63 824	421 352	49 205	2 273	218 881	1 489 907
	2020	1 106	74 192	519 537	11	583	4 015	46	22 757	156 128	12 159	1 163	97 532	691 839
	2021	1 266	92 071	670 050	31	6 897	50 919	102	21 065	155 659	41 480	1 399	120 033	918 108
Northern Cape	2019	286	26 626	210 824	0	0	0	10	6 388	50 141	7 782	296	33 014	268 747
	2020	289	21 188	180 879	0	0	0	11	7 110	61 167	2 340	300	28 298	244 386
	2021	320	27 619	230 879	0	0	0	13	9 110	77 170	2 678	333	36 729	310 727
Free State	2019	482	32 557	185 840	4	374	2 452	11	3 507	22 031	20 367	497	36 438	230 690
	2020	109	8 298	52 311	9	677	5 020	8	3 558	28 376	13 413	126	12 533	99 120
	2021	227	19 594	130 755	2	69	421	6	631	4 174	2 095	235	20 294	137 445
KwaZulu-Natal	2019	1 561	122 886	1 375 005	120	9 397	99 223	112	86 861	850 348	222 873	1 793	219 144	2 547 449
	2020	858	78 384	863 459	49	3 475	36 510	70	32 684	349 535	69 825	977	114 543	1 319 329
	2021	1 085	102 590	1 164 792	54	13 838	149 207	100	54 489	581 616	68 439	1 239	170 917	1 964 054
North West	2019	525	39 979	234 108	1	22	146	49	20 882	131 164	5 631	575	60 883	371 049
	2020	212	21 804	144 583	2	366	2 172	19	5 657	38 821	19 360	233	27 827	204 936
	2021	293	24 015	147 471	4	598	3 455	15	16 175	100 948	47 362	312	40 788	299 236
Gauteng	2019	2 385	245 616	1 993 246	61	6 299	49 543	129	109 189	790 279	52 273	2 575	361 104	2 885 341
	2020	1 246	132 110	1 072 670	98	14 742	136 402	83	69 515	600 914	34 283	1 427	216 367	1 844 269
	2021	1 815	201 872	1 717 021	54	3 251	31 379	79	90 379	658 871	27 144	1 948	295 502	2 434 415
Mpumalanga	2019	603	45 965	269 591	0	0	0	19	5 373	29 696	261 897	622	51 338	561 184
	2020	283	19 896	118 374	1	18	94	14	5 024	36 093	30 423	298	24 938	184 984
	2021	166	13 901	97 265	0	0	0	6	2 261	13 067	45 075	172	16 162	155 407

Table 14 - Number, square metres and value of additions and alterations reported as completed to municipalities by province (concluded)

Municipal reporting aggregated to provincial level by year		Additions and alterations												
		Dwelling-houses			Other residential buildings			Non-residential buildings			Internal alterations	Additions and alterations reported as completed to municipalities		
		Number of plans	Total square metres	Total value R'000	Number of plans	Total square metres	Total value R'000	Number of plans	Total square metres	Total value R'000	Total value R'000	Number of plans	Total square metres	Total value R'000
Limpopo	2019	76	7 474	42 323	10	314	1 732	5	1 411	7 920	12 932	91	9 199	64 907
	2020	53	4 714	26 899	9	1 562	9 304	7	3 743	22 315	10 000	69	10 019	68 518
	2021	62	6 282	37 605	20	1 676	10 158	4	669	4 283	19 001	86	8 627	71 047
South Africa	2019	13 910	1 058 243	7 850 223	888	72 175	610 423	972	470 805	3 552 894	1 258 537	15 770	1 601 223	13 272 077
	2020	9 048	692 342	5 284 845	775	94 847	767 591	746	361 146	2 783 740	1 231 987	10 569	1 148 335	10 068 163
	2021	12 657	1 033 565	7 786 285	848	69 472	591 035	1 008	480 577	3 636 020	1 468 212	14 513	1 583 614	13 481 552

Table 15 – Municipalities covered in the monthly survey: Western Cape

Municipality	Main towns within municipal boundaries	District municipality
Bitou	Plettenberg Bay	Eden
Breede Valley	De Doorns, Rawsonville, Touws River, Worcester	Cape Winelands
City of Cape Town	Bellville, Blue Downs, Brackenfell, Cape Town City Centre, Durbanville, Eersterivier, Fish Hoek, Goodwood, Gordon's Bay, Gugulethu, Khayelitsha, Kraaifontein, Kuilsrivier, Langa, Mfuleni, Milnerton, Mitchells Plain, Nyanga, Parow, Plumstead, Simon's Town, Somerset West, Strand	City of Cape Town
Drakenstein	Blouville, Hermon, Paarl, Soetendal, Wellington	Cape Winelands
George	George, Herolds Bay, Pacaltsdorp, Wilderness	Eden
Knysna	Knysna, Sedgfield	Eden
Mossel Bay	Groot Brakrivier, Herbertsdale, Klein Brakrivier, Mossel Bay	Eden
Oudtshoorn	De Rust, Dysseisdorp, Oudtshoorn	Eden
Overstrand	Betty's Bay, Fisherhaven, Gansbaai, Hangklip, Hawston, Hermanus, Kleinmond, Onrus, Rooiels Bay, Stanford, Vermont	Overberg
Saldanha Bay	Hopefield, Langebaan, Saldanha, Vredenburg	West Coast
Stellenbosch	Franschhoek, Pniel, Stellenbosch	Cape Winelands
Swartland	Darling, Koringberg, Malmesbury, Moorreesburg, Yzerfontein	West Coast

Table 16 – Municipalities covered in the monthly survey: Eastern Cape

Municipality	Main towns within municipal boundaries	District municipality
Buffalo City	Beacon Bay, Bisho, East London, Gonubie, Qonce, Mdantsane, Zwelitsha	Buffalo City
King Sabata Dalindyebo	Mqanduli, Mthatha	O R Tambo
Kouga	Cape St Francis, Hankey, Humansdorp, Jeffreys Bay, Oyster Bay, Patensie, St Francis Bay	Sarah Baartman
Makana	Alicedale, Makhanda, Riebeeck East	Sarah Baartman
Ndlambe	Alexandria, Bathurst, Kenton-on-Sea, Port Alfred	Sarah Baartman
Nelson Mandela	Despatch, Gqeberha, Uitenhage	Nelson Mandela Bay
Walter Sisulu	Aliwal North, Jamestown	Joe Gqabi

Table 17 – Municipalities covered in the monthly survey: Northern Cape

Municipality	Main towns within municipal boundaries	District municipality
Dawid Kruiper	Dagbreek, Gelukspruit, Karos, Louisvale, Sprigg, Upington	Z F Mgcawu
Ga-Segonyana	Bekker, Ga-Mopedi, Gathlose, Kuruman, Mothibistad, Seoding	John Taolo
Kai !Garib	Kakamas, Keimoes, Kenhardt	Z F Mgcawu
Sol Plaatje	Kenilworth, Kimberley, Modderrivier, Ritchie, Riverton, Spytfontein	Frances Baard

Table 18 – Municipalities covered in the monthly survey: Free State

Municipality	Main towns within municipal boundaries	District municipality
Dihlabeng	Bethlehem, Bohlokong, Clarens, Fouriesburg, Paul Roux, Rosendal	Thabo Mofutsanyana
Maluti-a-Phofung	Harrismith, Kestell, Phuthaditjhaba	Thabo Mofutsanyana
Mangaung	Bloemfontein, Botshabelo, Thaba Nchu	Mangaung
Mantsopa	Excelsior, Hobhouse, Ladybrand, Manyatseng, Thaba Phatshoa, Tweespruit	Thabo Mofutsanyana
Matjhabeng	Allanridge, Hennenman, Kutlwanong, Meloding, Odendaalsrus, Thabong, Ventersburg, Virginia, Welkom	Lejweleputswa
Metsimaholo	Deneysville, Oranjeville, Sasolburg	Fezile Dabi
Moqhaka	Kroonstad, Maokeng, Steynsrus, Viljoenskroon	Fezile Dabi
Ngwathe	Edenville, Heilbron, Koppies, Parys, Vredefort	Fezile Dabi

Table 19 – Municipalities covered in the monthly survey: KwaZulu-Natal

Municipality	Main towns within municipal boundaries	District municipality
Alfred Duma	Colenso, Ekuvukeni, Etholeni, Ingwe, Kliprivier, Ladysmith, Limehill, Mabaso, Rockcliff, Sams Hoek	uThukela
City of uMhlathuze	Empangeni, Richards Bay	King Cetshwayo
eThekwini	Amanzimtoti, Botha's Hill, Cato Ridge, Clermont, Drummond, Durban, Hillcrest, Inchanga, Kingsburgh, Kloof, KwaDabeka, KwaMakhutha, KwaMashu, Mount Edgecombe, Mpumalanga, New Germany, Pinetown, Queensburgh, Tongaat, Umdloti, Umhlanga, Umlazi, Verulam, Westville	eThekwini
Greater Kokstad	Bonny Ridge, Franklin, Kingscote, Kokstad, New Amalfi, Swartberg	Harry Gwala
KwaDukuza	Ballito, Blythedale Beach, Shakaskraal, Stanger, Tinley Manor Beach, Zinkwazi Beach	Ilembe
Msunduzi	Edendale, Pietermaritzburg	uMgungundlovu
Newcastle	Madadeni, Newcastle, Osizweni	Amajuba
Ray Nkonyeni	Hibberdene, Margate, Marina Beach, Munster, Port Edward, Port Shepstone, Ramsgate, Shelly Beach, Southbroom, St Michael's-on-Sea, Trafalgar, Uvongo	Ugu
Umdoni	Pennington, Scottburgh, Umzinto	Ugu
uMngeni	Hilton, Howick, Nottingham Road	uMgungundlovu

Table 20 – Municipalities covered in the monthly survey: North West

Municipality	Main towns within municipal boundaries	District municipality
City of Matlosana	Hartbeesfontein, Klerksdorp, Orkney, Stilfontein	Dr Kenneth Kaunda
Ditsobotla	Coligny, Itsoseng, Lichtenburg	Ngaka Modiri Molema
Madibeng	Brits, De Wildt, Hartbeespoort, Letlhabile	Bojanala Platinum
Mahikeng	Mafikeng, Ottoshoop	Ngaka Modiri Molema
Naledi	Stella, Vryburg	Dr Ruth Segomotsi Mompati
Ramotshere Moiloa	Zeerust	Ngaka Modiri Molema
Rustenburg	Marikana, Rustenburg	Bojanala Platinum
Tlokwe City Council	Potchefstroom	Dr Kenneth Kaunda

Table 21 – Municipalities covered in the monthly survey: Gauteng

Municipality	Main towns within municipal boundaries	District municipality
City of Johannesburg	Alexandra, Eikenhof, Eldorado Park, Ennerdale, Fourways, Florida, Grasmere, Halfway House, Honeydew, Johannesburg, Kyalami, Lawley Estate, Lenasia, Midrand, Modderfontein, Randburg, Randjiesfontein, Rivonia, Roodepoort, Sandton, Soweto, Van Wyksrust	City of Johannesburg
City of Tshwane	Akasia, Atteridgeville, Babelegi, Bon Accord, Bronkhorstspuit, Centurion, Diloppe, Doornrandjies, Ekangala, Erasmia, Ga-Mokone, Ga-Rankuwa, Garsfontein, Hammanskraal, Irene, Klippan, Mabopane, Mamelodi, Onderstepoort, Pinedene, Pretoria, Pretoria North, Soshanguve, Temba, Tierpoort, Tswaing, Valhalla, Welbekend, Winterveld	City of Tshwane
Ekurhuleni	Alberton, Bedfordview, Benoni, Boksburg, Brakpan, Daveyton, Duduza, Edenvale, Germiston, Katlehong, Kempton Park, KwaThema, Nigel, Springs, Tembisa, Thokoza, Tsakane, Vosloorus	Ekurhuleni
Emfuleni	Boipatong, Bophelong, Evaton, Sebokeng, Sharpeville, Vanderbijlpark, Vereeniging	Sedibeng
Lesedi	Heidelberg, Rensburgdorp, Ratanda	Sedibeng
Merafong City	Carletonville, Fochville, Khutsong	West Rand
Midvaal	Daleside, De Deur, Henly-on-Klip, Highbury, Meyerton, Randvaal, Walkerville	Sedibeng
Mogale City	Battery, Elberta, Hekpoort, Krugersdorp, Luipaardsvlei, Magaliesburg, Muldersdrift, Nooitgedacht, Thorndale	West Rand
Randfontein	Finsbury, Kocksoord, Mohlakeng, Randfontein	West Rand
Westonaria	Bekkersdal, Venterspos, Westonaria	West Rand

Table 22 – Municipalities covered in the monthly survey: Mpumalanga

Municipality	Main towns within municipal boundaries	District municipality
City of Mbombela	Hazyview, KaNyamazane, Nelspruit, White River	Ehlanzeni
Emalahleni	KwaGuqa, Witbank	Nkangala
Govan Mbeki	Bethal, Evander, Leandra, Secunda	Gert Sibande
Msukaligwa	Breyton, Chrissiesmeer, Davel, Ermelo, Lothair, Sheepmoor, Warbuton	Gert Sibande
Nkomazi	Hectorspruit, Komatipoort, Malelane, Marloth Park	Ehlanzeni
Steve Tshwete	Hendrina, Mhluzi, Middelburg	Nkangala
Victor Khanye	Argent, Delmas, Eloff, Sundra	Nkangala

Table 23 – Municipalities covered in the monthly survey: Limpopo

Municipality	Main towns within municipal boundaries	District municipality
Greater Tzaneen	Haenertsburg, Letsitele, Politsi, Rubbervale, Nkowankowa, Tzaneen	Mopani
Modimolle	Haakdong, Mabaleng, Modimolle, Palala	Waterberg
Mogalakwena	Drummondlea, Mahwelereng, Mokopane, Uitzicht	Waterberg
Mookgophong	Crecy, Immerpan, Mookgophong, Thusang	Waterberg
Musina	Beitbridge, Bridgewater, Brombeek, Evangelina, Huntleigh, Mopane, Musina, Tshipise	Vhembe
Polokwane	Polokwane, Seshego	Capricorn
Thabazimbi	Dwaalboom, Northam, Rooiberg, Thabazimbi	Waterberg

Explanatory notes

Introduction

- 1 Statistics South Africa (Stats SA) conducts a monthly survey of metropolitan municipalities and large local municipalities on building plans passed and buildings completed for the private sector. This publication contains aggregated data for the twelve months of the calendar year 2021. The survey collects detailed information of building plans passed and buildings completed reported for:
- residential buildings;
 - non-residential buildings; and
 - additions and alterations.

The figures obtained from municipalities do not include the bulk of low-cost dwelling-houses. According to some municipalities they are not always notified about subsidised low-cost housing projects being executed in their area of jurisdiction.

Scope of the survey

- 2 This survey covers metropolitan municipalities and large local municipalities conducting activities for the private sector regarding:
- approval of building plans; and
 - final inspection of completed buildings and issuing of occupation certificates.

Classification

- 3 Building activities are classified in Division 5 according to the 1993 edition of the *Standard Industrial Classification of all Economic Activities (SIC), Fifth Edition, Report No. 09-90-02*. The SIC is based on the 1990 *International Standard Industrial Classification of all Economic Activities (ISIC)* with suitable adaptations for local conditions.

Statistical unit

- 4 The statistical unit for the collection of information is a municipality.

Survey methodology and design

- 5 Stats SA conducts a monthly survey of metropolitan municipalities and large local municipalities on building plans passed and buildings completed. An annual survey of the remaining municipalities is conducted regarding buildings completed. The monthly survey represents approximately 88 per cent of the total value of buildings completed. Information is collected by mail, fax and telephone.

Comparison between building plans passed and buildings completed

- 6 No direct comparison can be made between building plans passed and buildings completed for the following reasons:
- an unknown number of building plans are passed and afterwards not executed;
 - if building operations have not commenced within the first year after approval, building plans are resubmitted;
 - the time-lag between the date of passing of a building plan and the date of completion of the building varies considerably; and
 - according to municipalities, final inspections of completed buildings are not always executed and therefore not recorded as completed.

Reliability of estimates

- 7 Inaccuracies may occur because of imperfections in reporting by municipalities. Every effort is made to reduce errors to a minimum by carefully editing, evaluating and querying of data.

Collection rate

- 8 The collection rate for the year 2021 was 84,9%.

- Number of dwelling-houses** **9** The number of dwelling-houses is shown and not the number of plans passed, since one plan may cover more than one dwelling-house.
- Related publications** **10** Users may also wish to refer to the following publications:
- P5041.1 - *Selected building statistics of the private sector as reported by local government institutions* issued monthly.
 - P9101.2 - *Actual and expected expenditure on construction by the public sector per region* issued annually.
 - *Building Statistics* (Report No. 50-11-01) issued annually.
- Rounding-off of figures** **11** The figures in the tables have, where necessary, been rounded off to the nearest digit shown. There may, therefore, be slight discrepancies between the sums of the constituent items and the totals shown.
- Symbols and abbreviations** **12** 0 nil or figure too small to publish
 * revised
 .. no data reported
Stats SA Statistics South Africa
SIC Standard Industrial Classification of all Economic Activities
ISIC International Standard Industrial Classification of all Economic Activities
GDP Gross domestic product

Glossary

Additions and alterations	Extensions to existing buildings as well as internal and external alterations of existing buildings.
Annual percentage change	The annual percentage change is the change in the actual values of building activities (building plans passed or buildings completed) of the relevant year compared with the actual values of building activities (building plans passed or buildings completed) of the previous year expressed as a percentage.
Block of flats	High-density housing consisting of a number of self-contained dwelling-units with at least one living-room together with a kitchen and bathroom conjoined to similar units in one building.
District municipality	A municipality that has municipal executive and legislative authority in an area that includes more than one municipality, and which is described in section 155(1) of the Constitution as a category C municipality (refer to Local Government: Municipal Structure Act, 1998 (Act No. 117 of 1998)).
Dwelling-house	A free-standing, complete structure on a separate stand or a self-contained dwelling-unit, e.g. granny flat, on the same premises as an existing residence. Out-buildings and garages are included.
Municipality	A generic term describing the unit of government in the third sphere responsible for local government in a geographically demarcated area. It includes district, metropolitan and local municipalities.
Local municipality	A municipality that shares municipal executive and legislative authority in its area with a district municipality within whose area it falls, and which is described in section 155(1) of the Constitution as a category B municipality (refer to Local Government: Municipal Structure Act, 1998 (Act No. 117 of 1998)).
Metropolitan municipality	A municipality that has municipal executive and legislative authority in an area that includes more than one municipality, and which is described in section 155(1) of the Constitution as a category A municipality (refer to Local Government: Municipal Structure Act, 1998 (Act No. 117 of 1998)).
Non-residential buildings	Factories and commercial, financial and other office buildings, as well as other buildings not used for residential purposes, such as churches, halls, clubs, schools and hospitals.
Other residential buildings	Institutions for the disabled, boarding houses, hostels and tourism accommodation e.g. hotels, motels, guest houses, holiday chalets, bed-and-breakfast accommodation, entertainment centres and casinos.
Reference period	Reference period for this statistical release refers to the calendar year 2021.
Residential buildings	Dwelling-houses, flats, townhouses and other residential buildings.
Townhouses	Multiple, medium-density dwelling-units including cluster housing, group housing, simplexes, duplexes, triplexes and other similar dwelling-units which are usually grouped together, with one level of each unit on ground level. This category excludes blocks of flats.

General information

Stats SA publishes approximately 300 different statistical releases each year. It is not economically viable to produce them in more than one of South Africa's eleven official languages. Since the releases are used extensively, not only locally but also by international economic and social-scientific communities, Stats SA releases are only published in English.

Stats SA has copyright on this publication. Users may apply the information as they wish, provided that they acknowledge Stats SA as the source of the basic data wherever they process, apply, utilise, publish or distribute the data; and also that they specify that the relevant application and analysis (where applicable) result from their own processing of the data.

Advance release calendar

An advance release calendar is disseminated on www.statssa.gov.za

Stats SA products

A complete set of Stats SA publications is available at the Stats SA Library and the following libraries:

National Library of South Africa, Pretoria Division
National Library of South Africa, Cape Town Division
Natal Society Library, Pietermaritzburg
Library of Parliament, Cape Town
Bloemfontein Public Library
Johannesburg Public Library
Eastern Cape Library Services, Qonce
Central Regional Library, Polokwane
Central Reference Library, Mbombela
Central Reference Collection, Kimberley
Central Reference Library, Mmabatho

Stats SA also provides a subscription service.

Electronic services

A large range of data are available via on-line services. For more details about our electronic data services, contact Stats SA's user information services at (012) 310 8600. You can visit us on the Internet at: www.statssa.gov.za

Enquiries

Telephone number: (082) 888 2374 (technical enquiries)
(012) 310 8600 (user information services)

Email: joycee@statssa.gov.za (technical enquiries)
info@statssa.gov.za (user information services)

Postal address: Private Bag X44, Pretoria, 0001

Produced by Stats SA