



**stats sa**

Department:  
Statistics South Africa  
**REPUBLIC OF SOUTH AFRICA**

Private Bag X44, Pretoria, 0001, South Africa, ISibalo House, Koch Street, Salvokop, Pretoria, 0002  
www.statssa.gov.za, info@statssa.gov.za, Tel +27 12 310 8911

## **STATISTICAL RELEASE**

P5041.3

# Selected building statistics of the private sector as reported by local government institutions

2019

Embargoed until:  
10 June 2020  
14:30

ENQUIRIES:  
Nicolai Claassen  
(012) 310 8007

FORTHCOMING ISSUE:  
2020

EXPECTED RELEASE DATE:  
June 2021



Dipalopalo tsa Aforikaborwa • Dipalopalo tsa Afrika Borwa • Ezezibalo zaseNingizimu Afrika • Tshitatistika Afrika Tshipembe • Tinhlayohlayo Afrika-Dzonga  
Statistieke Suid-Afrika • Dipalopalo tsa Afrika Borwa • Telubalo taseNingizimu Afrika • EzeeNkcukacha maNani zoMzantsi Afrika • Iimbalobalo zeSewula Afrika

The South Africa I know, the home I understand



## Contents

Introduction .....	ii
Key findings: Comparison between 2018 and 2019 .....	ii
Key findings for 2019 .....	vi
List of detailed tables .....	xii
List of municipalities covered in the monthly survey.....	xiii
Municipal reporting of building plans passed aggregated to provincial level .....	1
Municipal reporting of buildings completed aggregated to provincial level .....	17
Municipalities covered in the monthly survey .....	33
Explanatory notes .....	40
Glossary.....	42
General information .....	43

**Introduction**

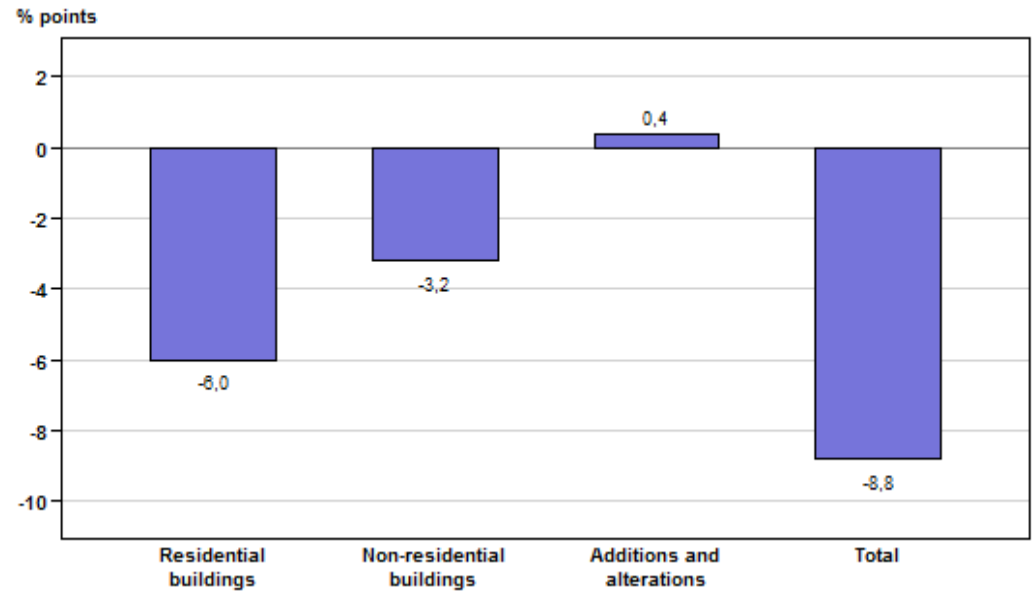
Data published in this statistical release are based on a monthly survey of metropolitan municipalities and large local municipalities on building plans passed and buildings completed for the private sector, released monthly at national and provincial level as P5041.1. This annual release contains aggregated data for the 12 months of 2019 by province, municipality and type of building.

**Key findings: Comparison between 2018 and 2019**

**Table A.1 – Selected key figures regarding building plans passed at current prices**

Estimates at current prices	2018 R'000	2019 R'000	% change between 2018 and 2019	Contribution (% points) to the % change in value of building plans passed between 2018 and 2019	Difference in value between 2018 and 2019 R'000
<b>Residential buildings</b>	<b>61 760 655</b>	<b>54 609 269</b>	<b>-11,6</b>	<b>-6,0</b>	<b>-7 151 386</b>
Dwelling-houses	33 128 191	30 612 188	-7,6	-2,1	-2 516 003
Flats and townhouses	26 824 390	23 245 031	-13,3	-3,0	-3 579 359
Other residential buildings	1 808 074	752 050	-58,4	-0,9	-1 056 024
<b>Non-residential buildings</b>	<b>27 194 795</b>	<b>23 401 405</b>	<b>-13,9</b>	<b>-3,2</b>	<b>-3 793 390</b>
Office and banking space	5 885 837	3 755 566	-36,2	-1,8	-2 130 271
Shopping space	5 196 064	4 444 241	-14,5	-0,6	-751 823
Industrial and warehouse space	12 221 177	11 022 600	-9,8	-1,0	-1 198 577
Other non-residential	3 891 717	4 178 998	7,4	0,2	287 281
<b>Additions and alterations</b>	<b>29 611 670</b>	<b>30 130 399</b>	<b>1,8</b>	<b>0,4</b>	<b>518 729</b>
<b>Total</b>	<b>118 567 120</b>	<b>108 141 073</b>	<b>-8,8</b>	<b>-8,8</b>	<b>-10 426 047</b>

**Figure A.1 – Contribution (percentage points) of type of building to the percentage change in the total value of building plans passed between 2018 and 2019**

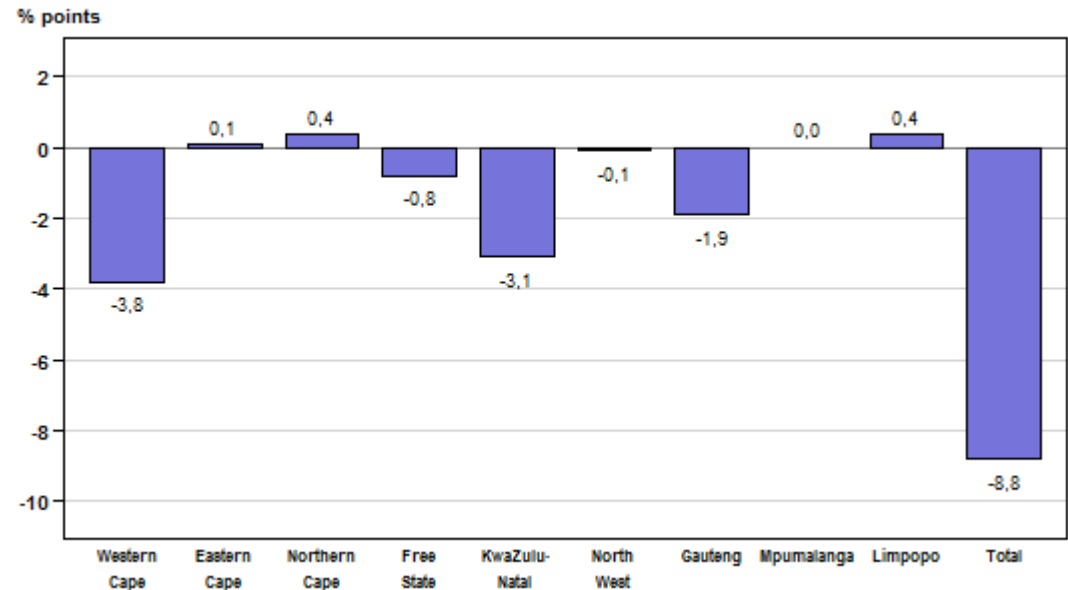


The value of recorded building plans passed by larger municipalities (at current prices) decreased by 8,8% (-R10 426,0 million) in 2019 compared with 2018. Decreases were reported in residential buildings (contributing -6,0 percentage points or -R7 151,4 million) and non-residential buildings (contributing -3,2 percentage points or -R3 793,4 million). An increase was reported in the additions and alterations category (contributing 0,4 of a percentage point or R518,7 million) – see Table A.1 and Figure A.1.

**Table A.2 – Recorded building plans passed by larger municipalities aggregated to provincial level: 2018 vs 2019**

Estimates at current prices	2018 R'000	2019 R'000	% change between 2018 and 2019	Contribution (% points) to the % change in the value of building plans passed between 2018 and 2019	Difference in value between 2018 and 2019 R'000
Western Cape	32 941 280	28 398 950	-13,8	-3,8	-4 542 330
Eastern Cape	7 137 722	7 222 679	1,2	0,1	84 957
Northern Cape	1 008 267	1 487 167	47,5	0,4	478 900
Free State	3 990 178	3 079 153	-22,8	-0,8	-911 025
KwaZulu-Natal	21 639 463	17 978 109	-16,9	-3,1	-3 661 354
North West	2 787 620	2 683 982	-3,7	-0,1	-103 638
Gauteng	43 265 173	41 072 787	-5,1	-1,9	-2 192 386
Mpumalanga	4 063 671	4 049 942	-0,3	0,0	-13 729
Limpopo	1 733 746	2 168 304	25,1	0,4	434 558
<b>Total</b>	<b>118 567 120</b>	<b>108 141 073</b>	<b>-8,8</b>	<b>-8,8</b>	<b>-10 426 047</b>

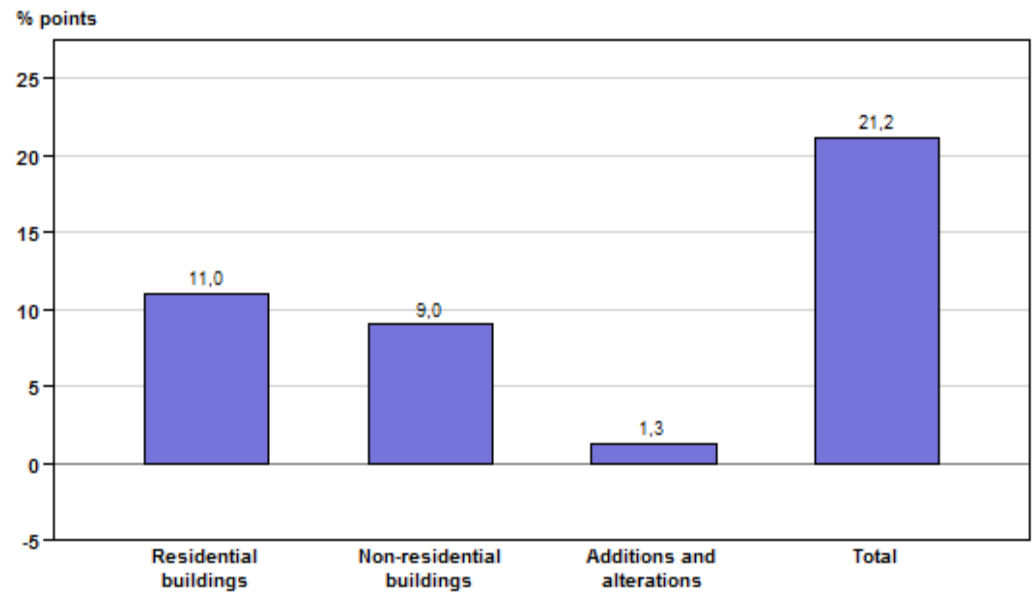
**Figure A.2 – Provincial contribution (percentage points) to the percentage change in the total value of building plans passed between 2018 and 2019**



The year-on-year decrease of 8,8% in the total value of building plans passed in 2019 is attributed to negative contributions recorded by municipalities in Western Cape (contributing -3,8 percentage points or -R4 542,3 million), KwaZulu-Natal (contributing -3,1 percentage points or -R3 661,4 million), Gauteng (contributing -1,9 percentage points or -R2 192,4 million), Free State (contributing -0,8 of a percentage point or -R911,0 million) and North West (contributing -0,1 of a percentage point or -R103,6 million) – see Table A.2 and Figure A.2.

**Table B.1 – Selected key figures regarding buildings completed at current prices**

Estimates at current prices	2018 R'000	2019 R'000	% change between 2018 and 2019	Contribution (% points) to the % change in value of building plans completed between 2018 and 2019	Difference in value between 2018 and 2019 R'000
<b>Residential buildings</b>	<b>44 465 069</b>	<b>52 493 387</b>	<b>18,1</b>	<b>11,0</b>	<b>8 028 318</b>
Dwelling-houses	23 255 502	22 892 526	-1,6	-0,5	-362 976
Flats and townhouses	20 534 729	29 016 328	41,3	11,6	8 481 599
Other residential buildings	674 838	584 533	-13,4	-0,1	-90 305
<b>Non-residential buildings</b>	<b>16 634 074</b>	<b>23 213 248</b>	<b>39,6</b>	<b>9,0</b>	<b>6 579 174</b>
Office and banking space	5 762 733	6 003 374	4,2	0,3	240 641
Shopping space	2 728 510	5 619 600	106,0	3,9	2 891 090
Industrial and warehouse space	6 574 273	8 705 902	32,4	2,9	2 131 629
Other non-residential	1 568 558	2 884 372	83,9	1,8	1 315 814
<b>Additions and alterations</b>	<b>12 317 159</b>	<b>13 272 077</b>	<b>7,8</b>	<b>1,3</b>	<b>954 918</b>
<b>Total</b>	<b>73 416 302</b>	<b>88 978 712</b>	<b>21,2</b>	<b>21,2</b>	<b>15 562 410</b>

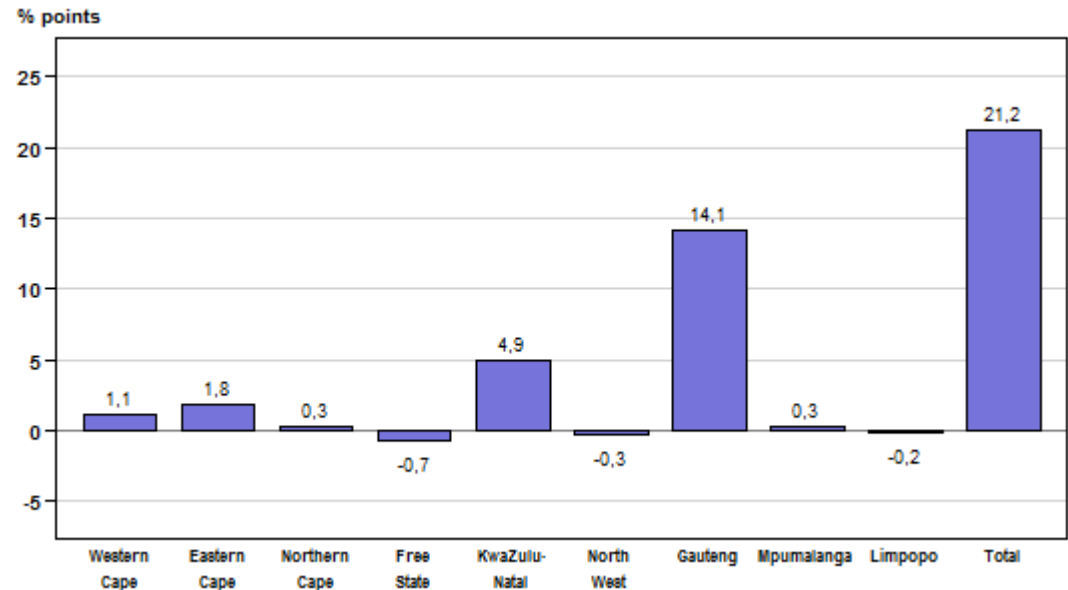
**Figure B.1 – Contribution (percentage points) of type of building to the percentage change in the total value of buildings completed between 2018 and 2019**

The value of buildings reported as completed to larger municipalities (at current prices) increased by 21,2% (R15 562,4 million) in 2019 compared with 2018. Increases were reported in all three of the major categories, namely residential buildings (contributing 11,0 percentage points or R8 028,3 million), non-residential buildings (contributing 9,0 percentage points or R6 579,2 million) and additions and alterations (contributing 1,3 percentage points or R954,9 million) – see Table B.1 and Figure B.1.

**Table B.2 – Provincial contribution (percentage points) to the percentage change in the total value of buildings completed between 2018 and 2019**

Estimates at current prices	2018 R'000	2019 R'000	% change between 2018 and 2019	Contribution (% points) to the % change in the value of building plans completed between 2018 and 2019	Difference in value between 2018 and 2019 R'000
Western Cape	21 199 550	22 008 625	3,8	1,1	809 075
Eastern Cape	2 404 733	3 696 909	53,7	1,8	1 292 176
Northern Cape	433 521	637 950	47,2	0,3	204 429
Free State	1 132 300	609 692	-46,2	-0,7	-522 608
KwaZulu-Natal	9 234 025	12 846 509	39,1	4,9	3 612 484
North West	2 161 521	1 907 288	-11,8	-0,3	-254 233
Gauteng	33 701 914	44 079 689	30,8	14,1	10 377 775
Mpumalanga	2 143 894	2 335 201	8,9	0,3	191 307
Limpopo	1 004 844	856 849	-14,7	-0,2	-147 995
<b>Total</b>	<b>73 416 302</b>	<b>88 978 712</b>	<b>21,2</b>	<b>21,2</b>	<b>15 562 410</b>

**Figure B.2 – Provincial contribution (percentage points) to the percentage change in the total value of buildings completed between 2018 and 2019**



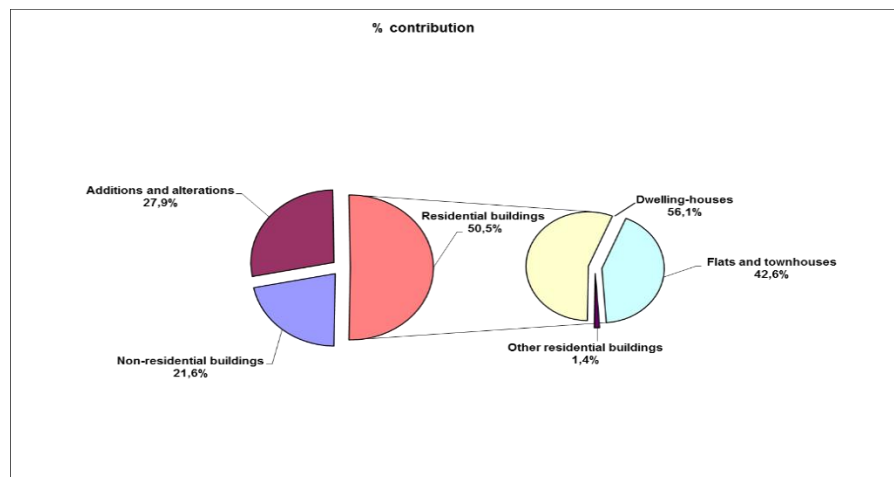
The provinces that recorded the largest year-on-year increases in the total value of buildings completed in 2019 were Gauteng (contributing 14,1 percentage points or R10 377,8 million), KwaZulu-Natal (contributing 4,9 percentage points or R3 612,5 million), Eastern Cape (contributing 1,8 percentage points or R1 292,2 million) and Western Cape (contributing 1,1 percentage points or R809,1 million). Decreases were recorded in three provinces, namely Free State (contributing -0,7 of a percentage point or -R522,6 million), North West (contributing -0,3 of a percentage point or -R254,2 million) and Limpopo (contributing -0,2 of a percentage point or -R148,0 million) – see Table B.2 and Figure B.2.

## Key findings for 2019

### Value of recorded building plans passed by larger municipalities for 2019 by type of building

The value of building plans passed for 2019 amounted to R108 141,1 million, showing a decrease of 8,8% compared with 2018. Residential buildings contributed the most to the total value of building plans passed (50,5% or R54 609,3 million), followed by additions and alterations (27,9% or R30 130,4 million) and non-residential buildings (21,6% or R23 401,4 million) – see Figure 1 and Table 1, pages 1 and 2.

**Figure 1 – Percentage contribution of the value of type of building to the total value of building plans passed for 2019**

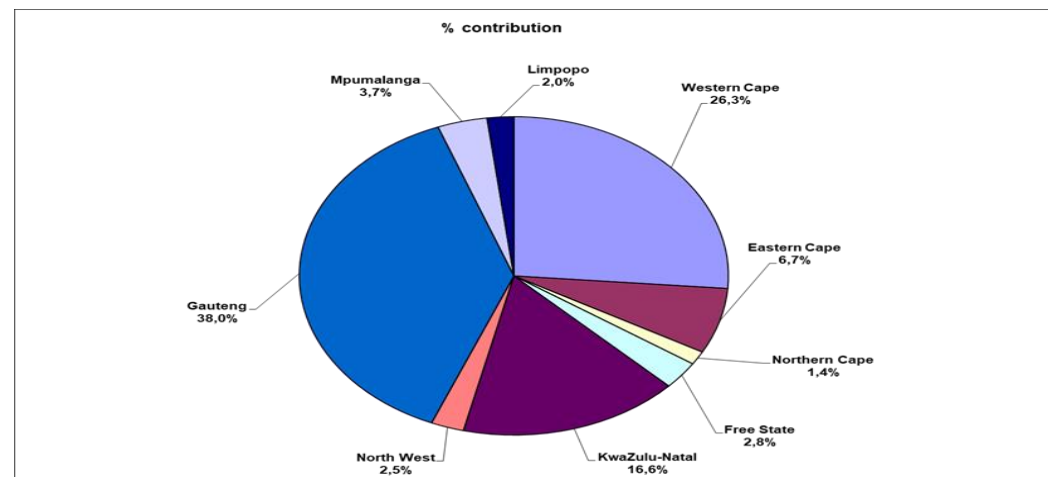


Regarding residential building plans passed, the largest contribution was recorded for dwelling-houses (56,1% or R30 612,2 million), followed by flats and townhouses (42,6% or R23 245,0 million) and ‘other’ residential buildings (1,4% or R752,1 million) – see Table 2, pages 3 and 4.

### Value of recorded building plans passed by larger municipalities for 2019 by province

The highest provincial contribution to the total value of building plans passed during 2019 was reported for Gauteng (contributing 38,0% or R41 072,8 million to the total of R108 141,1 million for South Africa), followed by Western Cape (26,3% or R28 399,0 million) and KwaZulu-Natal (16,6% or R17 978,1 million) – see Figure 2 and Table 1, pages 1 and 2. Table D (page viii) lists the largest municipal contributors to the value of recorded building plans passed for 2019 by province.

**Figure 2 – Provincial percentage contribution to the total value of building plans passed for 2019**



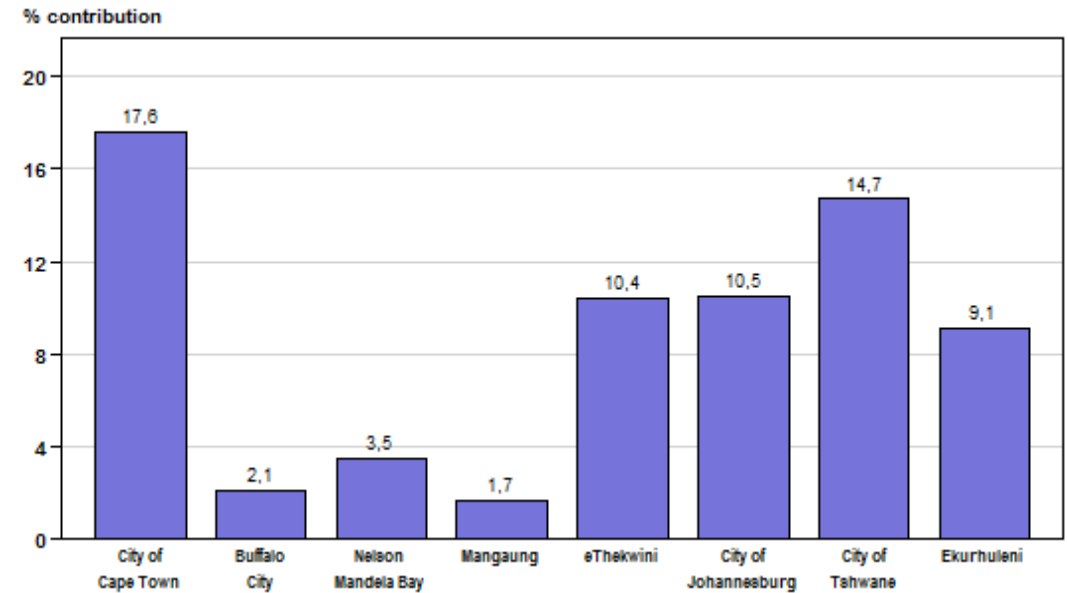
**Value of recorded building plans passed by the eight metropolitan municipalities for 2019**

The combined value of building plans passed for the eight metropolitan municipalities contributed 69,6% or R75 268,6 million to the total value of building plans passed (R108 141,1 million) during 2019 – see Table C.

**Table C – Value of recorded building plans passed by the eight metropolitan municipalities for 2019**

Metropolitan municipality	Value of building plans passed at metropolitan municipal level R million	Metropolitan municipal % contribution to the total value of building plans passed
City of Cape Town	18 978,9	17,6
Buffalo City	2 296,8	2,1
Nelson Mandela Bay	3 807,7	3,5
Mangaung	1 879,5	1,7
eThekwini	11 207,0	10,4
City of Johannesburg	11 378,6	10,5
City of Tshwane	15 929,0	14,7
Ekurhuleni	9 791,1	9,1
<b>Total metropolitan municipalities</b>	<b>75 268,6</b>	<b>69,6</b>

**Figure 3 – Metropolitan percentage contribution to the total value of building plans passed for 2019**



The highest metropolitan contribution to the total value of building plans passed during 2019 was recorded by City of Cape Town (17,6% or R18 978,9 million), followed by City of Tshwane (14,7% or R15 929,0 million), City of Johannesburg (10,5% or R11 378,6 million) and eThekwini Metropolitan Municipality (10,4% or R11 207,0 million) – see Table C and Figure 3.



**Table D – The largest municipal contributors to the value of recorded building plans passed for 2019 by province**

Province/municipality	Value of building plans passed at provincial/municipal level R million	Municipal % contribution to the value of building plans passed aggregated to provincial level
<b>Gauteng</b>	<b>41 072,8</b>	
City of Tshwane	15 929,0	38,8
City of Johannesburg	11 378,6	27,7
Ekurhuleni	9 791,1	23,8
Randfontein	1 209,6	2,9
Midvaal	810,4	2,0
<b>Western Cape</b>	<b>28 399,0</b>	
City of Cape Town	18 978,9	66,8
George	1 906,1	6,7
Knysna	1 269,8	4,5
Overstrand	1 241,0	4,4
Mossel Bay	1 202,6	4,2
<b>KwaZulu-Natal</b>	<b>17 978,1</b>	
eThekweni	11 207,0	62,3
KwaDukuza	2 373,8	13,2
Msunduzi	1 098,5	6,1
Umngeni	1 048,4	5,8
City of uMhlathuze	705,3	3,9
<b>Eastern Cape</b>	<b>7 222,7</b>	
Nelson Mandela Bay	3 807,7	52,7
Buffalo City	2 296,8	31,8
Kouga	638,8	8,8
Ndlambe	247,3	3,4
King Sabata Dalindyebo	121,4	1,7

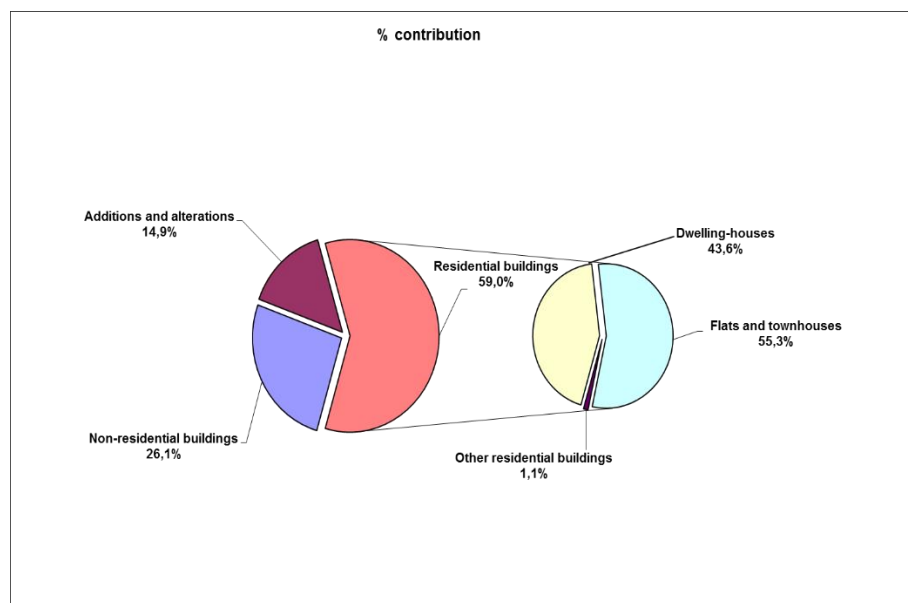
**Table D – The largest municipal contributors to the value of recorded building plans passed for 2019 by province (concluded)**

Province/municipality	Value of building plans passed at provincial/municipal level R million	Municipal % contribution to the value of building plans passed aggregated to provincial level
<b>Mpumalanga</b>	<b>4 049,9</b>	
City of Mbombela	1 864,6	46,0
Emalahleni	838,8	20,7
Steve Tshwete	827,3	20,4
Govan Mbeki	205,4	5,1
Nkomazi	129,3	3,2
<b>Free State</b>	<b>3 079,2</b>	
Mangaung	1 879,5	61,0
Matjhabeng	331,7	10,8
Metsimaholo	232,5	7,6
Maluti-a-Phofung	228,2	7,4
Dihlabeng	212,6	6,9
<b>North West</b>	<b>2 684,0</b>	
Tlokwe City Council	791,4	29,5
Madibeng	734,6	27,4
Rustenburg	555,5	20,7
City of Matlosana	372,0	13,9
Naledi	171,0	6,4
<b>Limpopo</b>	<b>2 168,3</b>	
Polokwane	1 313,3	60,6
Thabazimbi	260,1	12,0
Mogalakwena	229,1	10,6
Greater Tzaneen	217,7	10,0
Modimolle	103,1	4,8
<b>Northern Cape</b>	<b>1 487,2</b>	
Sol Plaatje	749,6	50,4
Dawid Kruiper	548,4	36,9
Ga-Segonyana	107,1	7,2
Kai !Garib	82,1	5,5

**Value of buildings reported as completed to larger municipalities for 2019 by type of building**

The value of buildings completed during 2019 amounted to R88 978,7 million, which is 21,2% higher than the R73 416,3 million reported for 2018. Residential buildings contributed the most to the total value of buildings completed (59,0% or R52 493,4 million), followed by non-residential buildings (26,1% or R23 213,2 million) and additions and alterations (14,9% or R13 272,1 million) – see Figure 4 and Table 8, pages 17 and 18.

**Figure 4 – Percentage contribution of the value of type of building to the total value of buildings completed during 2019**

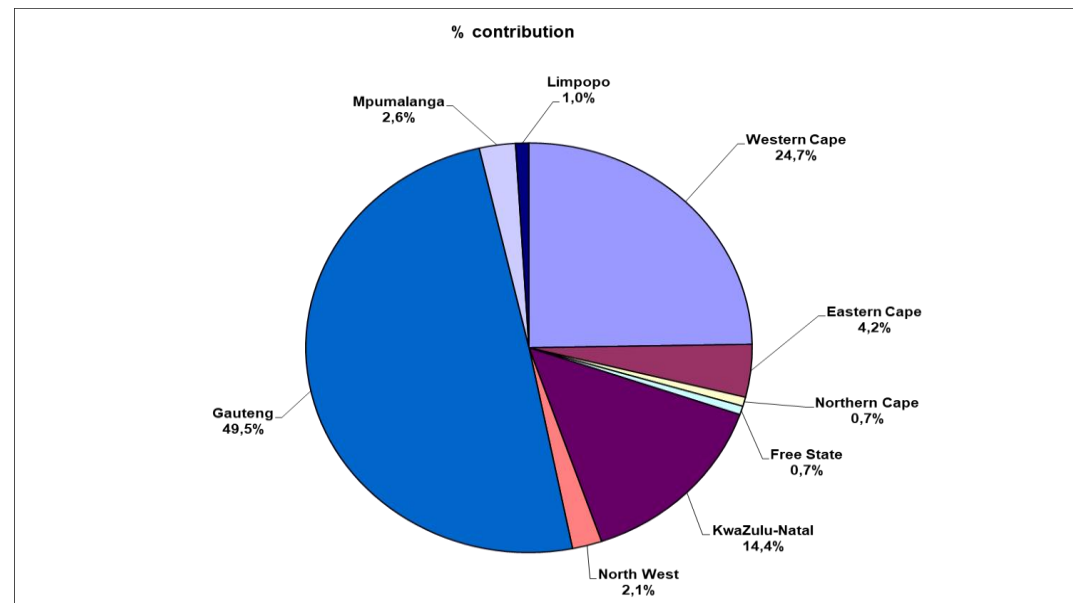


Regarding residential buildings completed, the largest contribution was flats and townhouses (55,3% or R29 016,3 million), followed by dwelling-houses (43,6% or R22 892,5 million) and ‘other’ residential buildings (1,1% or R584,5 million) – see Table 9, pages 19 and 20.

**Value of buildings reported as completed to larger municipalities for 2019 by province**

The largest provincial contributor to the total value of buildings completed during 2019 was Gauteng (contributing 49,5% or R44 079,7 million to the total of R88 978,7 million for South Africa), followed by Western Cape (24,7% or R22 008,6 million) and KwaZulu-Natal (14,4% or R12 846,5 million) – see Figure 5 and Table 8, pages 17 and 18. Table F (page xi) lists the largest municipal contributors to the value of buildings completed for 2019 by province.

**Figure 5 – Provincial percentage contribution to the total value of buildings completed during 2019**



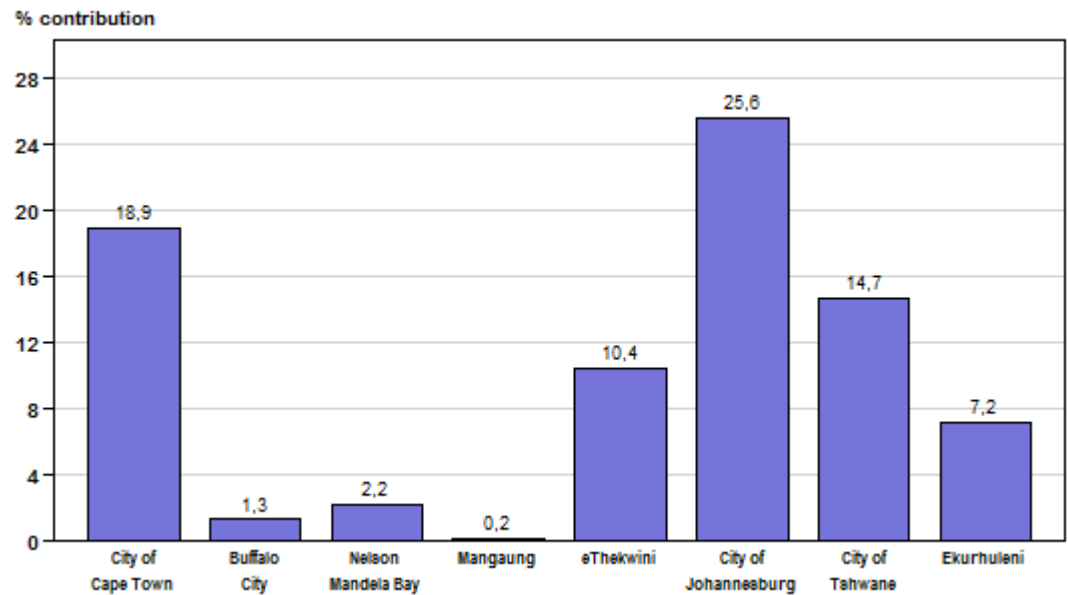
**Value of buildings reported as completed to the eight metropolitan municipalities for 2019**

The combined value of buildings completed for the eight metropolitan municipalities contributed 80,6% or R71 758,9 million to the total value of buildings completed (R88 978,7 million) during 2019 – see Table E.

**Table E – Value of buildings reported as completed to the eight metropolitan municipalities for 2019**

Metropolitan municipality	Value of buildings completed at metropolitan municipal level R million	Metropolitan municipal % contribution to the total value of buildings completed
City of Cape Town	16 805,4	18,9
Buffalo City	1 181,2	1,3
Nelson Mandela Bay	1 940,1	2,2
Mangaung	163,8	0,2
eThekweni	9 297,4	10,4
City of Johannesburg	22 816,1	25,6
City of Tshwane	13 110,6	14,7
Ekurhuleni	6 444,3	7,2
<b>Total metropolitan municipalities</b>	<b>71 758,9</b>	<b>80,6</b>

**Figure 6 – Metropolitan percentage contribution to the total value of buildings reported as completed for 2019**



The highest metropolitan contribution to the total value of buildings completed during 2019 was City of Johannesburg (25,6% or R22 816,1 million), followed by City of Cape Town (18,9% or R16 805,4 million), City of Tshwane (14,7% or R13 110,6 million), eThekweni (10,4% or R9 297,4 million) and Ekurhuleni (7,2% or R6 444,3 million) – see Table E and Figure 6.

**Table F – The largest municipal contributors to the value of buildings reported as completed for 2019 by province**

Province/municipality	Value of buildings completed at provincial/municipal level R million	Municipal % contribution to the value of buildings completed aggregated to provincial level
<b>Gauteng</b>	<b>44 079,7</b>	
City of Johannesburg	22 816,1	51,8
City of Tshwane	13 110,6	29,7
Ekurhuleni	6 444,3	14,6
Midvaal	717,7	1,6
Mogale City	333,0	0,8
<b>Western Cape</b>	<b>22 008,6</b>	
City of Cape Town	16 805,4	76,4
George	1 246,8	5,7
Mossel Bay	866,1	3,9
Overstrand	821,6	3,7
Stellenbosch	732,3	3,3
<b>KwaZulu-Natal</b>	<b>12 846,5</b>	
eThekweni	9 297,4	72,4
KwaDukuza	2 059,5	16,0
Umngeni	527,7	4,1
Newcastle	358,5	2,8
Ray Nkonyeni	169,1	1,3
<b>Eastern Cape</b>	<b>3 696,9</b>	
Nelson Mandela Bay	1 940,1	52,5
Buffalo City	1 181,2	32,0
Kouga	427,4	11,6
Ndlambe	114,2	3,1

**Table F – The largest municipal contributors to the value of buildings reported as completed for 2019 by province (concluded)**

Province/municipality	Value of buildings completed at provincial/municipal level R million	Municipal % contribution to the value of buildings completed aggregated to provincial level
<b>Mpumalanga</b>	<b>2 335,2</b>	
City of Mbombela	876,1	37,5
Steve Tshwete	867,4	37,1
Emalahleni	334,2	14,3
Govan Mbeki	198,9	8,5
<b>North West</b>	<b>1 907,3</b>	
Tlokwe City Council	554,7	29,1
City of Matlosana	502,9	26,4
Madibeng	442,4	23,2
Rustenburg	392,5	20,6
<b>Limpopo</b>	<b>856,8</b>	
Polokwane	597,7	69,8
Greater Tzaneen	115,9	13,5
Modimolle	50,1	5,8
<b>Northern Cape</b>	<b>638,0</b>	
Dawid Kruiper	526,9	82,6
Sol Plaatje	103,4	16,2
<b>Free State</b>	<b>609,7</b>	
Matjhabeng	165,5	27,1
Mangaung	163,8	26,9
Dihlabeng	132,5	21,7

Risenga Maluleke  
Statistician-General

## LIST OF DETAILED TABLES

**PART 1 – MUNICIPAL REPORTING OF BUILDING PLANS PASSED AGGREGATED TO PROVINCIAL LEVEL**

Table 1	- Number, square metres and value of recorded building plans passed by municipalities for residential buildings, non-residential buildings and additions and alterations by province .....	1
Table 2	- Number, square metres and value of recorded residential building plans passed by municipalities: dwelling-houses, flats and townhouses and other residential buildings by province.....	3
Table 3	- Number, square metres and value of recorded building plans passed by municipalities for dwelling-houses by size of dwelling-house and province.....	5
Table 4	- Number, square metres and value of recorded building plans passed by municipalities for flats and townhouses by province .....	7
Table 5	- Number, square metres and value of recorded building plans passed by municipalities for other residential buildings by province .....	9
Table 6.1	- Number, square metres and value of recorded non-residential building plans passed by municipalities: office and banking space, shopping space and industrial and warehouse space by province .....	11
Table 6.2	- Number, square metres and value of recorded non-residential building plans passed by municipalities: schools, nursery schools, crèches, hospitals, churches, sport clubs, recreation clubs and all other non-residential space by province .....	13
Table 7	- Number, square metres and value of recorded building plans passed by municipalities for additions and alterations by province .....	15

**PART 2 – MUNICIPAL REPORTING OF BUILDINGS COMPLETED AGGREGATED TO PROVINCIAL LEVEL**

Table 8	- Number, square metres and value of residential buildings, non-residential buildings and additions and alterations reported as completed to municipalities by province .....	17
Table 9	- Number, square metres and value of residential buildings reported as completed to municipalities: dwelling-houses, flats and townhouses and other residential buildings by province.....	19
Table 10	- Number, square metres and value of dwelling-houses reported as completed to municipalities by size of dwelling-house by province.....	21
Table 11	- Number, square metres and value of flats and townhouses reported as completed to municipalities by province .....	23
Table 12	- Number, square metres and value of other residential buildings reported as completed to municipalities by province .....	25
Table 13.1	- Number, square metres and value of non-residential buildings reported as completed to municipalities by province: office and banking space, shopping space and industrial and warehouse space .....	27
Table 13.2	- Number, square metres and value of non-residential buildings reported as completed to municipalities by province: schools, nursery schools, crèches, hospitals, churches, sport clubs, recreation clubs and all other non-residential space .....	29
Table 14	- Number, square metres and value of additions and alterations reported as completed to municipalities by province.....	31

**LIST OF MUNICIPALITIES COVERED IN THE MONTHLY SURVEY**

Table 15	- Municipalities covered in the monthly survey: Western Cape .....	33
Table 16	- Municipalities covered in the monthly survey: Eastern Cape .....	34
Table 17	- Municipalities covered in the monthly survey: Northern Cape .....	34
Table 18	- Municipalities covered in the monthly survey: Free State .....	35
Table 19	- Municipalities covered in the monthly survey: KwaZulu-Natal .....	36
Table 20	- Municipalities covered in the monthly survey: North West .....	37
Table 21	- Municipalities covered in the monthly survey: Gauteng .....	38
Table 22	- Municipalities covered in the monthly survey: Mpumalanga .....	39
Table 23	- Municipalities covered in the monthly survey: Limpopo .....	39

**Part 1**  
**Municipal reporting of building plans passed  
aggregated to provincial level**

**Table 1 – Number, square metres and value of recorded building plans passed by municipalities for residential buildings, non-residential buildings and additions and alterations by province**

Municipal reporting aggregated to provincial level by year		Residential buildings		Non-residential buildings			Additions and alterations			Recorded building plans passed by municipalities	
		Total square metres	Total value R'000	Number of buildings	Total square metres	Total value R'000	Number of plans	Total square metres	Total value R'000	Total square metres	Total value R'000
Western Cape	2017 *	2 358 489	16 317 005	373	803 010	6 039 444	14 175	1 176 272	9 055 610	4 337 771	31 412 059
	2018 *	2 618 177	18 166 013	453	868 048	6 208 142	13 423	1 151 623	8 567 125	4 637 848	32 941 280
	2019	1 836 841	12 998 038	461	870 555	6 328 234	12 992	1 148 364	9 072 678	3 855 760	28 398 950
Eastern Cape	2017	446 816	2 676 626	145	209 719	1 241 303	4 236	370 476	2 342 935	1 027 011	6 260 864
	2018 *	436 545	2 773 250	174	300 033	1 811 014	4 263	413 387	2 553 458	1 149 965	7 137 722
	2019	364 978	2 418 772	141	382 569	2 525 774	4 139	340 410	2 278 133	1 087 957	7 222 679
Northern Cape	2017	41 556	290 172	28	29 634	196 147	537	42 862	316 636	114 052	802 955
	2018	43 228	305 653	39	42 319	306 445	528	52 939	396 169	138 486	1 008 267
	2019	60 409	438 424	35	73 623	566 944	611	58 041	481 799	192 073	1 487 167
Free State	2017	236 329	1 467 977	79	103 262	622 657	1 695	167 178	1 196 656	506 769	3 287 290
	2018 *	231 602	1 558 018	70	131 552	874 459	1 701	210 633	1 557 701	573 787	3 990 178
	2019	206 120	1 432 625	49	75 128	494 722	1 480	144 483	1 151 806	425 731	3 079 153
KwaZulu-Natal	2017	947 132	8 760 663	246	997 900	8 230 514	5 333	564 657	5 892 198	2 509 689	22 883 375
	2018 *	935 805	9 659 812	258	833 141	6 075 859	5 036	542 696	5 903 792	2 311 642	21 639 463
	2019	810 905	7 852 780	232	590 280	4 222 117	4 854	540 259	5 903 212	1 941 444	17 978 109
North West	2017	436 905	2 301 476	52	57 448	300 639	1 776	150 206	804 272	644 559	3 406 387
	2018 *	323 189	1 706 911	60	65 844	347 676	1 470	130 839	733 033	519 872	2 787 620
	2019	274 412	1 561 129	57	64 463	393 679	1 323	116 688	729 174	455 563	2 683 982
Gauteng	2017 *	3 140 694	23 251 391	323	1 462 655	10 629 889	10 463	1 114 799	8 412 347	5 718 148	42 293 627
	2018 *	3 177 550	24 823 158	327	1 321 611	10 168 172	10 858	1 046 868	8 273 843	5 546 029	43 265 173
	2019	3 159 742	25 078 580	284	957 780	7 157 739	10 183	1 063 121	8 836 468	5 180 643	41 072 787
Mpumalanga	2017	314 059	1 672 321	90	112 535	631 559	1 613	145 871	886 016	572 465	3 189 896
	2018	293 388	1 737 184	118	181 427	1 049 875	1 797	162 335	1 276 612	637 150	4 063 671
	2019	251 286	1 580 658	100	184 453	1 203 485	1 731	151 886	1 265 799	587 625	4 049 942

\*Revised.



**Table 1 – Number, square metres and value of recorded building plans passed by municipalities for residential buildings, non-residential buildings and additions and alterations by province (concluded)**

Municipal reporting aggregated to provincial level by year		Residential buildings		Non-residential buildings			Additions and alterations			Recorded building plans passed by municipalities	
		Total square metres	Total value R'000	Number of buildings	Total square metres	Total value R'000	Number of plans	Total square metres	Total value R'000	Total square metres	Total value R'000
Limpopo	2017	228 230	1 190 775	60	88 185	466 223	577	64 282	356 862	380 697	2 013 860
	2018 *	195 241	1 030 656	59	67 259	353 153	539	59 385	349 937	321 885	1 733 746
	2019	221 496	1 248 263	55	88 377	508 711	656	67 221	411 330	377 094	2 168 304
South Africa	2017 *	8 150 210	57 928 406	1 396	3 864 348	28 358 375	40 405	3 796 603	29 263 532	15 811 161	115 550 313
	2018 *	8 254 725	61 760 655	1 558	3 811 234	27 194 795	39 615	3 770 705	29 611 670	15 836 664	118 567 120
	2019	7 186 189	54 609 269	1 414	3 287 228	23 401 405	37 969	3 630 473	30 130 399	14 103 890	108 141 073

\*Revised.

**Table 2 – Number, square metres and value of recorded residential building plans passed by municipalities: dwelling-houses, flats and townhouses and other residential buildings by province**

Municipal reporting aggregated to provincial level by year		Residential buildings										
		Dwelling-houses			Flats and townhouses			Other residential buildings and tourism accommodation <sup>1</sup>			Recorded residential building plans passed by municipalities	
		Number of dwelling-houses	Total square metres	Total value R'000	Number of units	Total square metres	Total value R'000	Number of buildings	Total square metres	Total value R'000	Total square metres	Total value R'000
Western Cape	2017	11 495	1 567 094	10 374 605	7 446	776 357	5 835 808	60	15 038	106 592	2 358 489	16 317 005
	2018 *	11 383	1 564 081	10 142 586	10 556	1 029 501	7 829 822	28	24 595	193 605	2 618 177	18 166 013
	2019	6 855	1 102 351	7 254 310	6 378	685 826	5 394 827	33	48 664	348 901	1 836 841	12 998 038
Eastern Cape	2017	3 033	380 961	2 272 743	491	56 983	350 987	5	8 872	52 896	446 816	2 676 626
	2018	2 435	329 722	2 107 406	1 592	103 810	649 938	6	3 013	15 906	436 545	2 773 250
	2019	1 460	277 676	1 856 076	769	87 029	560 738	1	273	1 958	364 978	2 418 772
Northern Cape	2017	205	40 433	282 701	4	343	2 401	2	780	5 070	41 556	290 172
	2018	174	34 932	243 745	75	6 591	49 973	3	1 705	11 935	43 228	305 653
	2019	354	56 290	403 609	44	3 826	32 247	1	293	2 568	60 409	438 424
Free State	2017	804	155 497	916 556	674	77 975	534 787	12	2 857	16 634	236 329	1 467 977
	2018 *	965	162 966	1 064 228	468	53 080	392 808	31	15 556	100 982	231 602	1 558 018
	2019	891	155 869	1 071 133	467	39 967	304 707	23	10 284	56 785	206 120	1 432 625
KwaZulu-Natal	2017	2 830	458 826	4 017 280	3 183	440 427	4 240 672	14	47 879	502 711	947 132	8 760 663
	2018 *	1 285	358 770	3 488 562	3 211	490 186	5 083 209	12	86 849	1 088 041	935 805	9 659 812
	2019	1 995	420 277	3 945 340	3 018	380 075	3 786 359	11	10 553	121 081	810 905	7 852 780
North West	2017	1 896	245 933	1 161 729	2 062	189 379	1 131 832	3	1 593	7 915	436 905	2 301 476
	2018	1 634	214 736	1 122 645	1 031	98 194	528 859	7	10 259	55 407	323 189	1 706 911
	2019	1 327	193 080	1 088 463	645	80 230	463 850	1	1 102	8 816	274 412	1 561 129
Gauteng	2017 *	12 851	1 771 330	12 094 573	9 938	1 356 284	11 057 138	8	13 080	99 680	3 140 694	23 251 391
	2018 *	11 916	1 688 040	12 478 795	11 529	1 460 550	12 106 350	9	28 960	238 013	3 177 550	24 823 158
	2019	12 532	1 708 940	12 569 575	12 024	1 441 573	12 442 946	6	9 229	66 059	3 159 742	25 078 580
Mpumalanga	2017	1 679	292 444	1 569 790	171	16 903	79 165	18	4 712	23 366	314 059	1 672 321
	2018	1 195	260 546	1 550 426	149	15 341	86 066	23	17 501	100 692	293 388	1 737 184
	2019	1 161	233 405	1 481 806	107	5 053	27 823	8	12 828	71 029	251 286	1 580 658

<sup>1</sup>Institutions for the disabled, boarding houses, hotels and tourism accommodation e.g. hotels, motels, guest houses, holiday chalets, bed-and-breakfast accommodation and casinos.

\*Revised.

**Table 2 – Number, square metres and value of recorded residential building plans passed by municipalities: dwelling-houses, flats and townhouses and other residential buildings by province (concluded)**

Municipal reporting aggregated to provincial level by year		Residential buildings										
		Dwelling-houses			Flats and townhouses			Other residential buildings and tourism accommodation <sup>1</sup>			Recorded residential building plans passed by municipalities	
		Number of dwelling-houses	Total square metres	Total value R'000	Number of units	Total square metres	Total value R'000	Number of buildings	Total square metres	Total value R'000	Total square metres	Total value R'000
Limpopo	2017	805	185 134	955 067	257	32 699	180 625	5	10 397	55 083	228 230	1 190 775
	2018	735	176 584	929 798	188	17 978	97 365	3	679	3 493	195 241	1 030 656
	2019	569	168 685	941 876	708	42 060	231 534	3	10 751	74 853	221 496	1 248 263
South Africa	2017 *	35 598	5 097 652	33 645 044	24 226	2 947 350	23 413 415	127	105 208	869 947	8 150 210	57 928 406
	2018 *	31 722	4 790 377	33 128 191	28 799	3 275 231	26 824 390	122	189 117	1 808 074	8 254 725	61 760 655
	2019	27 144	4 316 573	30 612 188	24 160	2 765 639	23 245 031	87	103 977	752 050	7 186 189	54 609 269

<sup>1</sup>Institutions for the disabled, boarding houses, hotels and tourism accommodation e.g. hotels, motels, guest houses, holiday chalets, bed-and-breakfast accommodation and casinos.

\*Revised.

**Table 3 – Number, square metres and value of recorded building plans passed by municipalities for dwelling-houses by size of dwelling-house and province**

Municipal reporting aggregated to provincial level by year		Size of dwelling-house									Recorded dwelling-house plans passed by municipalities		
		Equal to or smaller than 30 square metres			Larger than 30 square metres and smaller than 80 square metres			Equal to or larger than 80 square metres					
		Number of dwelling-houses	Total square metres	Total value R'000	Number of dwelling-houses	Total square metres	Total value R'000	Number of dwelling-houses	Total square metres	Total value R'000	Number of dwelling-houses	Total square metres	Total value R'000
Western Cape	2017	179	4 345	20 176	5 958	286 344	1 748 225	5 358	1 276 405	8 606 204	11 495	1 567 094	10 374 605
	2018	22	621	4 805	6 048	271 040	1 609 006	5 313	1 292 420	8 528 775	11 383	1 564 081	10 142 586
	2019	100	2 653	8 568	2 752	126 404	762 406	4 003	973 294	6 483 336	6 855	1 102 351	7 254 310
Eastern Cape	2017	0	0	0	1 778	83 556	431 221	1 255	297 405	1 841 522	3 033	380 961	2 272 743
	2018	0	0	0	1 132	53 821	336 496	1 303	275 901	1 770 910	2 435	329 722	2 107 406
	2019	0	0	0	321	19 765	125 600	1 139	257 911	1 730 476	1 460	277 676	1 856 076
Northern Cape	2017	0	0	0	36	2 070	12 649	169	38 363	270 052	205	40 433	282 701
	2018	0	0	0	21	1 192	9 536	153	33 740	234 209	174	34 932	243 745
	2019	0	0	0	150	7 100	34 069	204	49 190	369 540	354	56 290	403 609
Free State	2017	1	26	151	116	7 109	45 278	687	148 362	871 127	804	155 497	916 556
	2018	0	0	0	256	14 957	102 921	709	148 009	961 307	965	162 966	1 064 228
	2019	0	0	0	225	13 609	102 906	666	142 260	968 227	891	155 869	1 071 133
KwaZulu-Natal	2017	1	25	113	1 550	71 386	356 904	1 279	387 415	3 660 263	2 830	458 826	4 017 280
	2018	4	106	566	154	9 715	76 110	1 127	348 949	3 411 886	1 285	358 770	3 488 562
	2019	4	118	574	736	29 773	173 336	1 255	390 386	3 771 430	1 995	420 277	3 945 340
North West	2017	0	0	0	1 133	52 380	126 372	763	193 553	1 035 357	1 896	245 933	1 161 729
	2018	2	48	120	940	40 954	145 604	692	173 734	976 921	1 634	214 736	1 122 645
	2019	0	0	0	705	30 980	120 793	622	162 100	967 670	1 327	193 080	1 088 463
Gauteng	2017	2	60	285	8 552	426 020	1 815 109	4 297	1 345 250	10 279 179	12 851	1 771 330	12 094 573
	2018	0	0	0	7 562	379 920	1 998 514	4 354	1 308 120	10 480 281	11 916	1 688 040	12 478 795
	2019	1	25	208	8 512	471 294	2 305 155	4 019	1 237 621	10 264 212	12 532	1 708 940	12 569 575
Mpumalanga	2017	1	28	133	750	37 640	169 273	928	254 776	1 400 384	1 679	292 444	1 569 790
	2018	0	0	0	299	17 288	90 412	896	243 258	1 460 014	1 195	260 546	1 550 426
	2019	0	0	0	332	18 934	95 840	829	214 471	1 385 966	1 161	233 405	1 481 806

**Table 3 – Number, square metres and value of recorded building plans passed by municipalities for dwelling-houses by size of dwelling-house and province (concluded)**

Municipal reporting aggregated to provincial level by year		Size of dwelling-house									Recorded dwelling-house plans passed by municipalities		
		Equal to or smaller than 30 square metres			Larger than 30 square metres and smaller than 80 square metres			Equal to or larger than 80 square metres					
		Number of dwelling-houses	Total square metres	Total value R'000	Number of dwelling-houses	Total square metres	Total value R'000	Number of dwelling-houses	Total square metres	Total value R'000	Number of dwelling-houses	Total square metres	Total value R'000
Limpopo	2017	0	0	0	229	14 391	81 184	576	170 743	873 883	805	185 134	955 067
	2018	0	0	0	233	13 596	69 311	502	162 988	860 487	735	176 584	929 798
	2019	1	28	216	96	6 007	33 789	472	162 650	907 871	569	168 685	941 876
South Africa	2017	184	4 484	20 858	20 102	980 896	4 786 215	15 312	4 112 272	28 837 971	35 598	5 097 652	33 645 044
	2018	28	775	5 491	16 645	802 483	4 437 910	15 049	3 987 119	28 684 790	31 722	4 790 377	33 128 191
	2019	106	2 824	9 566	13 829	723 866	3 753 894	13 209	3 589 883	26 848 728	27 144	4 316 573	30 612 188

**Table 4 – Number, square metres and value of recorded building plans passed by municipalities for flats and townhouses by province**

Municipal reporting aggregated to provincial level by year		Flats			Townhouses			Recorded building plans passed for flats and townhouses by municipalities		
		Number of units	Total square metres	Total value R'000	Number of units	Total square metres	Total value R'000	Number of units	Total square metres	Total value R'000
Western Cape	2017	5 957	482 736	3 670 690	1 489	293 621	2 165 118	7 446	776 357	5 835 808
	2018 *	9 050	767 187	5 815 915	1 506	262 314	2 013 907	10 556	1 029 501	7 829 822
	2019	5 015	433 174	3 478 914	1 363	252 652	1 915 913	6 378	685 826	5 394 827
Eastern Cape	2017	239	13 265	76 872	252	43 718	274 115	491	56 983	350 987
	2018	1 315	64 915	393 629	277	38 895	256 309	1 592	103 810	649 938
	2019	322	28 507	166 360	447	58 522	394 378	769	87 029	560 738
Northern Cape	2017	0	0	0	4	343	2 401	4	343	2 401
	2018	23	1 843	14 822	52	4 748	35 151	75	6 591	49 973
	2019	22	1 732	14 202	22	2 094	18 045	44	3 826	32 247
Free State	2017	221	7 000	49 213	453	70 975	485 574	674	77 975	534 787
	2018	271	12 316	89 563	197	40 764	303 245	468	53 080	392 808
	2019	249	8 979	69 528	218	30 988	235 179	467	39 967	304 707
KwaZulu-Natal	2017	1 351	181 779	2 002 583	1 832	258 648	2 238 089	3 183	440 427	4 240 672
	2018 *	1 701	266 323	3 116 719	1 510	223 863	1 966 490	3 211	490 186	5 083 209
	2019	1 844	195 080	2 095 005	1 174	184 995	1 691 354	3 018	380 075	3 786 359
North West	2017	998	68 496	411 274	1 064	120 883	720 558	2 062	189 379	1 131 832
	2018	365	24 431	144 715	666	73 763	384 144	1 031	98 194	528 859
	2019	393	25 913	160 070	252	54 317	303 780	645	80 230	463 850
Gauteng	2017 *	2 984	219 511	2 221 203	6 954	1 136 773	8 835 935	9 938	1 356 284	11 057 138
	2018 *	3 693	178 292	1 841 364	7 836	1 282 258	10 264 986	11 529	1 460 550	12 106 350
	2019	2 882	188 855	1 891 942	9 142	1 252 718	10 551 004	12 024	1 441 573	12 442 946
Mpumalanga	2017	93	9 941	46 871	78	6 962	32 294	171	16 903	79 165
	2018	85	6 409	43 393	64	8 932	42 673	149	15 341	86 066
	2019	87	4 036	22 661	20	1 017	5 162	107	5 053	27 823

\*Revised.

**Table 4 – Number, square metres and value of recorded building plans passed by municipalities for flats and townhouses by province (concluded)**

Municipal reporting aggregated to provincial level by year		Flats			Townhouses			Recorded building plans passed for flats and townhouses by municipalities		
		Number of units	Total square metres	Total value R'000	Number of units	Total square metres	Total value R'000	Number of units	Total square metres	Total value R'000
Limpopo	2017	51	2 877	15 319	206	29 822	165 306	257	32 699	180 625
	2018	74	4 807	27 481	114	13 171	69 884	188	17 978	97 365
	2019	530	26 238	145 272	178	15 822	86 262	708	42 060	231 534
South Africa	2017 *	11 894	985 605	8 494 025	12 332	1 961 745	14 919 390	24 226	2 947 350	23 413 415
	2018 *	16 577	1 326 523	11 487 601	12 222	1 948 708	15 336 789	28 799	3 275 231	26 824 390
	2019	11 344	912 514	8 043 954	12 816	1 853 125	15 201 077	24 160	2 765 639	23 245 031

\*Revised.

**Table 5 – Number, square metres and value of recorded building plans passed by municipalities for other residential buildings by province**

Municipal reporting aggregated to provincial level by year		Other residential buildings								
		Tourism accommodation and casinos <sup>1</sup>			Other residential buildings excluding tourism accommodation <sup>2</sup>			Recorded building plans passed by municipalities for other residential buildings		
		Number of buildings	Total square metres	Total value R'000	Number of buildings	Total square metres	Total value R'000	Number of buildings	Total square metres	Total value R'000
Western Cape	2017	25	5 085	36 551	35	9 953	70 041	60	15 038	106 592
	2018	2	781	5 205	26	23 814	188 400	28	24 595	193 605
	2019	11	41 110	295 701	22	7 554	53 200	33	48 664	348 901
Eastern Cape	2017	2	2 794	16 500	3	6 078	36 396	5	8 872	52 896
	2018	2	1 547	7 037	4	1 466	8 869	6	3 013	15 906
	2019	1	273	1 958	0	0	0	1	273	1 958
Northern Cape	2017	2	780	5 070	0	0	0	2	780	5 070
	2018	3	1 705	11 935	0	0	0	3	1 705	11 935
	2019	1	293	2 568	0	0	0	1	293	2 568
Free State	2017	2	816	3 955	10	2 041	12 679	12	2 857	16 634
	2018 *	4	5 920	38 210	27	9 636	62 772	31	15 556	100 982
	2019	3	2 157	13 382	20	8 127	43 403	23	10 284	56 785
KwaZulu-Natal	2017	11	33 949	362 918	3	13 930	139 793	14	47 879	502 711
	2018	8	77 095	980 295	4	9 754	107 746	12	86 849	1 088 041
	2019	2	1 374	16 350	9	9 179	104 731	11	10 553	121 081
North West	2017	2	1 482	7 257	1	111	658	3	1 593	7 915
	2018	5	8 284	43 152	2	1 975	12 255	7	10 259	55 407
	2019	0	0	0	1	1 102	8 816	1	1 102	8 816
Gauteng	2017	4	8 501	68 894	4	4 579	30 786	8	13 080	99 680
	2018 *	5	2 656	24 008	4	26 304	214 005	9	28 960	238 013
	2019	2	3 488	33 400	4	5 741	32 659	6	9 229	66 059
Mpumalanga	2017	16	3 369	17 163	2	1 343	6 203	18	4 712	23 366
	2018	22	15 685	91 474	1	1 816	9 218	23	17 501	100 692
	2019	7	12 617	69 375	1	211	1 654	8	12 828	71 029

<sup>1</sup>Hotels, motels, guest houses, holiday chalets, bed-and-breakfast accommodation and casinos.

<sup>2</sup>Institutions for the disabled, boarding houses and hotels.

\*Revised.



**Table 5 – Number, square metres and value of recorded building plans passed by municipalities for other residential buildings by province (concluded)**

Municipal reporting aggregated to provincial level by year		Other residential buildings								
		Tourism accommodation and casinos <sup>1</sup>			Other residential buildings excluding tourism accommodation <sup>2</sup>			Recorded building plans passed by municipalities for other residential buildings		
		Number of buildings	Total square metres	Total value R'000	Number of buildings	Total square metres	Total value R'000	Number of buildings	Total square metres	Total value R'000
Limpopo	2017	4	10 075	53 473	1	322	1 610	5	10 397	55 083
	2018	0	0	0	3	679	3 493	3	679	3 493
	2019	1	3 478	21 407	2	7 273	53 446	3	10 751	74 853
South Africa	2017	68	66 851	571 781	59	38 357	298 166	127	105 208	869 947
	2018 *	51	113 673	1 201 316	71	75 444	606 758	122	189 117	1 808 074
	2019	28	64 790	454 141	59	39 187	297 909	87	103 977	752 050

<sup>1</sup>Hotels, motels, guest houses, holiday chalets, bed-and-breakfast accommodation and casinos.

<sup>2</sup>Institutions for the disabled, boarding houses and hotels.

\*Revised.

**Table 6.1 – Number, square metres and value of recorded non-residential building plans passed by municipalities: office and banking space, shopping space and industrial and warehouse space**

Municipal reporting aggregated to provincial level by year		Non-residential buildings								
		Office and banking space			Shopping space			Industrial and warehouse space		
		Number of buildings	Total square metres	Total value R'000	Number of buildings	Total square metres	Total value R'000	Number of buildings	Total square metres	Total value R'000
Western Cape	2017	29	124 891	1 081 747	31	150 834	1 239 422	180	369 311	2 609 007
	2018	29	106 953	841 589	56	147 314	1 202 958	233	412 837	2 769 988
	2019	29	67 852	524 076	37	128 317	1 050 298	222	397 110	2 836 752
Eastern Cape	2017	15	15 596	91 405	17	18 668	104 078	50	142 283	854 362
	2018 *	25	36 307	231 253	20	13 883	86 847	65	203 694	1 217 454
	2019	20	20 133	132 314	31	59 450	378 550	68	284 243	1 890 239
Northern Cape	2017	4	2 630	16 025	4	7 159	45 213	12	15 540	107 288
	2018	8	11 341	89 842	3	9 288	71 638	25	19 491	127 283
	2019	10	7 158	58 376	2	1 576	9 261	15	10 715	70 759
Free State	2017	4	6 130	50 054	17	43 932	260 743	39	40 014	220 347
	2018 *	8	7 979	53 989	17	34 704	232 000	31	79 698	533 108
	2019	9	8 802	61 406	16	15 743	91 731	10	22 754	136 834
KwaZulu-Natal	2017	34	148 528	1 494 003	42	366 355	3 689 458	123	411 683	2 452 789
	2018	36	150 178	1 573 077	37	65 913	682 768	148	552 927	3 307 322
	2019	19	41 427	403 627	44	86 738	843 540	128	418 062	2 584 496
North West	2017	9	3 623	20 030	13	24 208	127 277	19	23 672	122 495
	2018	13	7 218	34 592	20	27 858	150 626	13	23 304	124 084
	2019	6	5 170	29 654	16	21 087	133 190	9	6 675	36 678
Gauteng	2017	55	297 941	2 977 158	52	209 457	1 845 721	146	779 539	4 466 864
	2018 *	63	270 851	2 890 443	54	274 940	2 532 928	138	588 443	3 359 207
	2019	56	215 853	2 280 831	54	139 354	1 207 005	120	522 137	3 054 571
Mpumalanga	2017	11	10 921	59 815	17	24 848	147 289	38	49 370	273 855
	2018	19	21 789	131 638	20	25 462	128 129	46	102 831	618 499
	2019	16	32 646	209 536	22	66 614	487 960	45	44 598	247 591

\*Revised.

**Table 6.1 – Number, square metres and value of recorded non-residential building plans passed by municipalities: office and banking space, shopping space and industrial and warehouse space (concluded)**

Municipal reporting aggregated to provincial level by year		Non-residential buildings								
		Office and banking space			Shopping space			Industrial and warehouse space		
		Number of buildings	Total square metres	Total value R'000	Number of buildings	Total square metres	Total value R'000	Number of buildings	Total square metres	Total value R'000
Limpopo	2017	11	13 048	64 708	16	23 172	122 353	21	27 209	133 068
	2018 *	10	7 353	39 414	8	19 940	108 170	26	31 597	164 232
	2019	7	10 088	55 746	22	40 665	242 706	16	29 229	164 680
South Africa	2017	172	623 308	5 854 945	209	868 633	7 581 554	628	1 858 621	11 240 075
	2018 *	211	619 969	5 885 837	235	619 302	5 196 064	725	2 014 822	12 221 177
	2019	172	409 129	3 755 566	244	559 544	4 444 241	633	1 735 523	11 022 600

\*Revised.

**Table 6.2 – Number, square metres and value of recorded non-residential building plans passed by municipalities: schools, nursery schools, crèches, hospitals, churches, sport clubs, recreation clubs and all other non-residential space**

Municipal reporting aggregated to provincial level by year		Non-residential buildings											
		Schools, nursery schools, crèches and hospitals			Churches, sport and recreation clubs			All other non-residential space			Recorded non-residential building plans passed by municipalities <sup>1</sup>		
		Number of buildings	Total square metres	Total value R'000	Number of buildings	Total square metres	Total value R'000	Number of buildings	Total square metres	Total value R'000	Number of buildings	Total square metres	Total value R'000
Western Cape	2017 *	28	55 642	436 173	30	14 823	105 730	75	87 509	567 365	373	803 010	6 039 444
	2018	32	95 684	692 218	26	31 720	210 832	77	73 540	490 557	453	868 048	6 208 142
	2019	35	90 943	671 682	22	10 328	70 251	116	176 005	1 175 175	461	870 555	6 328 234
Eastern Cape	2017	9	18 010	104 197	10	9 428	54 404	44	5 734	32 857	145	209 719	1 241 303
	2018 *	12	31 949	200 027	15	6 833	31 190	37	7 367	44 243	174	300 033	1 811 014
	2019	6	10 879	77 033	6	4 105	23 473	10	3 759	24 165	141	382 569	2 525 774
Northern Cape	2017	3	1 233	6 994	3	903	5 444	2	2 169	15 183	28	29 634	196 147
	2018	1	1 935	15 559	1	200	1 608	1	64	515	39	42 319	306 445
	2019	2	51 775	412 494	6	2 399	16 054	0	0	0	35	73 623	566 944
Free State	2017	3	3 923	30 739	6	7 344	49 889	10	1 919	10 885	79	103 262	622 657
	2018 *	1	671	3 195	9	6 674	39 112	4	1 826	13 055	70	131 552	874 459
	2019	3	22 027	160 232	3	827	5 610	8	4 975	38 909	49	75 128	494 722
KwaZulu-Natal	2017	15	39 152	313 067	19	13 613	87 324	13	18 569	193 873	246	997 900	8 230 514
	2018	15	45 698	348 853	15	16 008	143 638	7	2 417	20 201	258	833 141	6 075 859
	2019	8	6 015	43 090	28	26 592	224 825	5	11 446	122 539	232	590 280	4 222 117
North West	2017	8	5 011	26 279	3	934	4 558	0	0	0	52	57 448	300 639
	2018 *	3	2 319	12 264	9	4 863	24 841	2	282	1 269	60	65 844	347 676
	2019	10	18 457	115 024	13	11 453	71 138	3	1 621	7 995	57	64 463	393 679
Gauteng	2017	39	138 015	1 080 889	19	22 680	154 326	12	15 023	104 931	323	1 462 655	10 629 889
	2018 *	33	136 767	1 019 245	32	41 316	292 293	7	9 294	74 056	327	1 321 611	10 168 172
	2019	16	31 464	261 803	27	33 184	228 543	11	15 788	124 986	284	957 780	7 157 739
Mpumalanga	2017	6	17 437	103 393	9	4 058	19 081	9	5 901	28 126	90	112 535	631 559
	2018	8	13 152	81 227	13	6 630	32 213	12	11 563	58 169	118	181 427	1 049 875
	2019	4	20 248	149 959	6	14 061	76 912	7	6 286	31 527	100	184 453	1 203 485

<sup>1</sup>Office and banking space, shopping space, industrial and warehouse space, schools, nursery schools, crèches, hospitals, churches, sport clubs, recreation clubs and all other non-residential space (Tables 6.1 and 6.2).

\*Revised.

**Table 6.2 – Number, square metres and value of recorded non-residential building plans passed by municipalities: schools, nursery schools, crèches, hospitals, churches, sport clubs, recreation clubs and all other non-residential space (concluded)**

Municipal reporting aggregated to provincial level by year		Non-residential buildings											
		Schools, nursery schools, crèches and hospitals			Churches, sport and recreation clubs			All other non-residential space			Recorded non-residential building plans passed by municipalities <sup>1</sup>		
		Number of buildings	Total square metres	Total value R'000	Number of buildings	Total square metres	Total value R'000	Number of buildings	Total square metres	Total value R'000	Number of buildings	Total square metres	Total value R'000
Limpopo	2017	6	17 245	108 493	3	2 452	12 293	3	5 059	25 308	60	88 185	466 223
	2018 *	6	2 859	12 512	4	4 385	23 016	5	1 125	5 809	59	67 259	353 153
	2019	4	4 903	26 316	4	1 436	7 408	2	2 056	11 855	55	88 377	508 711
South Africa	2017 *	117	295 668	2 210 224	102	76 235	493 049	168	141 883	978 528	1 396	3 864 348	28 358 375
	2018 *	111	331 034	2 385 100	124	118 629	798 743	152	107 478	707 874	1 558	3 811 234	27 194 795
	2019	88	256 711	1 917 633	115	104 385	724 214	162	221 936	1 537 151	1 414	3 287 228	23 401 405

<sup>1</sup>Office and banking space, shopping space, industrial and warehouse space, schools, nursery schools, crèches, hospitals, churches, sport clubs, recreation clubs and all other non-residential space (Tables 6.1 and 6.2).

\*Revised.

**Table 7 – Number, square metres and value of recorded building plans passed by municipalities for additions and alterations by province**

Municipal reporting aggregated to provincial level by year		Additions and alterations												
		Dwelling-houses			Other residential buildings			Non-residential buildings			Internal alterations	Recorded building plans passed for additions and alterations by municipalities		
		Number of plans	Total square metres	Total value R'000	Number of plans	Total square metres	Total value R'000	Number of plans	Total square metres	Total value R'000	Total value R'000	Number of plans	Total square metres	Total value R'000
Western Cape	2017	12 743	881 040	5 782 409	703	48 405	385 119	729	246 827	1 823 219	1 064 863	14 175	1 176 272	9 055 610
	2018	11 805	855 924	5 670 967	919	62 849	516 562	699	232 850	1 734 755	644 841	13 423	1 151 623	8 567 125
	2019	11 391	822 913	5 419 740	890	80 319	622 429	711	245 132	1 805 012	1 225 497	12 992	1 148 364	9 072 678
Eastern Cape	2017	3 987	288 441	1 792 552	46	3 653	20 737	203	78 382	467 112	62 534	4 236	370 476	2 342 935
	2018	3 992	288 532	1 786 028	43	8 459	52 545	228	116 396	662 293	52 592	4 263	413 387	2 553 458
	2019	3 758	252 836	1 663 946	88	4 745	30 462	293	82 829	539 266	44 459	4 139	340 410	2 278 133
Northern Cape	2017	514	38 721	276 674	1	46	207	22	4 095	26 549	13 206	537	42 862	316 636
	2018	504	40 146	294 374	4	429	3 159	20	12 364	92 832	5 804	528	52 939	396 169
	2019	586	48 624	386 165	1	175	1 534	24	9 242	70 990	23 110	611	58 041	481 799
Free State	2017	1 604	137 953	805 993	10	3 806	19 555	81	25 419	177 016	194 092	1 695	167 178	1 196 656
	2018	1 624	138 283	910 352	4	1 788	9 094	73	70 562	498 670	139 585	1 701	210 633	1 557 701
	2019	1 377	109 432	744 739	12	2 606	13 881	91	32 445	198 656	194 530	1 480	144 483	1 151 806
KwaZulu-Natal	2017	4 587	389 427	3 817 852	293	20 178	229 745	453	155 052	1 310 678	533 923	5 333	564 657	5 892 198
	2018	4 314	366 258	3 641 725	300	18 993	210 340	422	157 445	1 520 305	531 422	5 036	542 696	5 903 792
	2019	4 165	370 640	3 735 811	219	24 224	253 610	470	145 395	1 399 843	513 948	4 854	540 259	5 903 212
North West	2017	1 709	131 800	681 927	5	455	2 367	62	17 951	95 818	24 160	1 776	150 206	804 272
	2018 *	1 411	112 635	612 789	1	272	1 380	58	17 932	105 937	12 927	1 470	130 839	733 033
	2019	1 265	100 877	579 246	3	348	2 057	55	15 463	93 663	54 208	1 323	116 688	729 174
Gauteng	2017	10 059	934 025	7 096 144	44	7 224	62 518	360	173 550	1 031 462	222 223	10 463	1 114 799	8 412 347
	2018	10 484	874 286	6 972 068	53	4 230	34 728	321	168 352	1 076 527	190 520	10 858	1 046 868	8 273 843
	2019	9 809	914 507	7 589 743	111	18 637	131 502	263	129 977	943 558	171 665	10 183	1 063 121	8 836 468
Mpumalanga	2017	1 545	128 281	638 501	2	22	105	66	17 568	92 846	154 564	1 613	145 871	886 016
	2018	1 673	136 979	749 349	64	1 860	9 958	60	23 496	125 196	392 109	1 797	162 335	1 276 612
	2019	1 665	134 361	783 655	4	141	729	62	17 384	101 139	380 276	1 731	151 886	1 265 799

\*Revised.

**Table 7 – Number, square metres and value of recorded building plans passed by municipalities for additions and alterations by province (concluded)**

Municipal reporting aggregated to provincial level by year		Additions and alterations												
		Dwelling-houses			Other residential buildings			Non-residential buildings			Internal alterations	Recorded building plans passed for additions and alterations by municipalities		
		Number of plans	Total square metres	Total value R'000	Number of plans	Total square metres	Total value R'000	Number of plans	Total square metres	Total value R'000	Total value R'000	Number of plans	Total square metres	Total value R'000
Limpopo	2017	543	54 894	280 328	10	1 557	7 707	24	7 831	39 380	29 447	577	64 282	356 862
	2018	506	48 527	257 540	11	1 409	7 766	22	9 449	49 996	34 635	539	59 385	349 937
	2019	559	60 762	344 165	71	2 969	16 792	26	3 490	19 530	30 843	656	67 221	411 330
South Africa	2017	37 291	2 984 582	21 172 380	1 114	85 346	728 060	2 000	726 675	5 064 080	2 299 012	40 405	3 796 603	29 263 532
	2018 *	36 313	2 861 570	20 895 192	1 399	100 289	845 532	1 903	808 846	5 866 511	2 004 435	39 615	3 770 705	29 611 670
	2019	34 575	2 814 952	21 247 210	1 399	134 164	1 072 996	1 995	681 357	5 171 657	2 638 536	37 969	3 630 473	30 130 399

\*Revised.

**Part 2**  
**Municipal reporting of buildings completed**  
**aggregated to provincial level**



**Table 8 – Number, square metres and value of residential buildings, non-residential buildings and additions and alterations reported as completed by province**

Municipal reporting aggregated to provincial level by year		Residential buildings		Non-residential buildings			Additions and alterations			Buildings reported as completed to municipalities	
		Total square metres	Total value R'000	Number of buildings	Total square metres	Total value R'000	Number of plans	Total square metres	Total value R'000	Total square metres	Total value R'000
Western Cape	2017	1 687 457	11 553 753	287	752 963	5 588 281	9 812	747 259	5 148 513	3 187 679	22 290 547
	2018	1 725 832	12 084 905	277	610 601	4 382 445	7 523	645 127	4 732 200	2 981 560	21 199 550
	2019	1 640 860	11 888 519	276	708 591	5 267 303	7 048	611 222	4 852 803	2 960 673	22 008 625
Eastern Cape	2017	152 648	880 593	30	31 180	158 142	1 668	123 018	735 269	306 846	1 774 004
	2018	177 648	1 138 671	40	68 992	419 535	1 405	129 836	846 527	376 476	2 404 733
	2019	178 388	1 161 585	73	157 424	1 045 417	2 273	218 881	1 489 907	554 693	3 696 909
Northern Cape	2017	15 912	110 908	12	24 408	183 933	291	23 168	173 608	63 488	468 449
	2018	11 905	88 802	8	4 122	30 506	422	40 047	314 213	56 074	433 521
	2019	34 245	268 408	15	12 807	100 795	296	33 014	268 747	80 066	637 950
Free State	2017	93 640	578 862	14	15 127	108 084	628	39 848	297 757	148 615	984 703
	2018	92 961	633 935	21	35 330	263 706	343	32 206	234 659	160 497	1 132 300
	2019	45 725	281 774	15	15 309	97 228	497	36 438	230 690	97 472	609 692
KwaZulu-Natal	2017	474 942	4 596 642	112	798 999	6 772 652	1 760	192 869	2 016 475	1 466 810	13 385 769
	2018	412 680	4 299 551	109	299 042	2 480 034	2 279	225 634	2 454 440	937 356	9 234 025
	2019	528 711	5 721 703	124	608 700	4 577 357	1 793	219 144	2 547 449	1 356 555	12 846 509
North West	2017	213 820	1 113 950	38	56 251	295 107	502	58 250	317 396	328 321	1 726 453
	2018	268 660	1 498 043	42	45 673	233 554	846	72 269	429 924	386 602	2 161 521
	2019	214 967	1 255 473	41	51 094	280 766	575	60 883	371 049	326 944	1 907 288
Gauteng	2017	2 420 880	18 577 293	281	1 248 692	9 372 178	2 897	345 765	2 686 834	4 015 337	30 636 305
	2018	2 892 365	22 740 013	293	1 110 534	8 250 295	2 664	345 180	2 711 606	4 348 079	33 701 914
	2019	3 706 805	29 901 816	293	1 368 341	11 292 532	2 575	361 104	2 885 341	5 436 250	44 079 689
Mpumalanga	2017	168 663	883 406	33	41 043	215 522	382	33 916	187 926	243 622	1 286 854
	2018	236 347	1 335 109	37	50 356	266 171	561	60 363	542 614	347 066	2 143 894
	2019	221 661	1 342 326	31	66 143	431 691	622	51 338	561 184	339 142	2 335 201

**Table 8 – Number, square metres and value of residential buildings, non-residential buildings and additions and alterations reported as completed by province (concluded)**

Municipal reporting aggregated to provincial level by year		Residential buildings		Non-residential buildings			Additions and alterations			Buildings reported as completed to municipalities	
		Total square metres	Total value R'000	Number of buildings	Total square metres	Total value R'000	Number of plans	Total square metres	Total value R'000	Total square metres	Total value R'000
Limpopo	2017	118 226	533 199	28	47 797	243 904	55	6 990	40 196	173 013	817 299
	2018	121 665	646 040	26	57 432	307 828	62	6 135	50 976	185 232	1 004 844
	2019	120 018	671 783	20	21 783	120 159	91	9 199	64 907	151 000	856 849
South Africa	2017	5 346 188	38 828 606	835	3 016 460	22 937 803	17 995	1 571 083	11 603 974	9 933 731	73 370 383
	2018	5 940 063	44 465 069	853	2 282 082	16 634 074	16 105	1 556 797	12 317 159	9 778 942	73 416 302
	2019	6 691 380	52 493 387	888	3 010 192	23 213 248	15 770	1 601 223	13 272 077	11 302 795	88 978 712

**Table 9 – Number, square metres and value of residential buildings reported as completed to municipalities: dwelling-houses, flats and townhouses and other residential buildings by province**

Municipal reporting aggregated to provincial level by year		Residential buildings										
		Dwelling-houses			Flats and townhouses			Other residential buildings and tourism accommodation <sup>1</sup>			Residential buildings reported as completed to municipalities	
		Number of dwelling-houses	Total square metres	Total value R'000	Number of units	Total square metres	Total value R'000	Number of buildings	Total square metres	Total value R'000	Total square metres	Total value R'000
Western Cape	2017	8 970	1 135 594	7 290 763	3 806	471 355	3 611 022	15	80 508	651 968	1 687 457	11 553 753
	2018	7 739	1 037 192	6 781 622	5 805	637 825	4 978 925	38	50 815	324 358	1 725 832	12 084 905
	2019	5 889	912 924	6 142 823	6 237	711 978	5 619 123	6	15 958	126 573	1 640 860	11 888 519
Eastern Cape	2017	987	140 214	807 965	83	8 378	49 608	3	4 056	23 020	152 648	880 593
	2018	1 121	150 212	957 621	231	27 436	181 050	0	0	0	177 648	1 138 671
	2019	976	148 737	966 164	293	28 649	188 362	3	1 002	7 059	178 388	1 161 585
Northern Cape	2017	57	13 049	91 947	17	1 928	13 449	2	935	5 512	15 912	110 908
	2018	69	11 684	87 065	2	221	1 737	0	0	0	11 905	88 802
	2019	138	30 561	239 082	33	3 209	25 763	1	475	3 563	34 245	268 408
Free State	2017	422	53 802	305 464	584	39 507	271 607	3	331	1 791	93 640	578 862
	2018	388	47 832	297 479	342	44 522	333 294	6	607	3 162	92 961	633 935
	2019	236	41 168	251 709	36	2 108	12 755	11	2 449	17 310	45 725	281 774
KwaZulu-Natal	2017	957	261 373	2 477 827	1 372	194 080	1 897 833	7	19 489	220 982	474 942	4 596 642
	2018	1 041	246 372	2 572 485	812	146 679	1 503 367	6	19 629	223 699	412 680	4 299 551
	2019	868	235 500	2 514 738	1 931	281 374	3 079 574	2	11 837	127 391	528 711	5 721 703
North West	2017	1 122	171 150	886 012	416	41 885	223 287	2	785	4 651	213 820	1 113 950
	2018	1 125	165 823	905 033	1 115	100 975	583 822	2	1 862	9 188	268 660	1 498 043
	2019	845	158 592	918 947	655	49 678	298 125	4	6 697	38 401	214 967	1 255 473
Gauteng	2017	10 488	1 562 122	10 987 300	7 206	730 097	6 230 901	11	128 661	1 359 092	2 420 880	18 577 293
	2018	8 975	1 313 329	9 922 956	9 231	1 576 194	12 799 717	3	2 842	17 340	2 892 365	22 740 013
	2019	9 303	1 308 033	10 102 642	15 935	2 367 303	19 537 989	5	31 469	261 185	3 706 805	29 901 816
Mpumalanga	2017	1 080	134 042	696 832	409	34 621	186 574	0	0	0	168 663	883 406
	2018	1 421	212 034	1 197 091	180	18 665	97 302	3	5 648	40 716	236 347	1 335 109
	2019	1 125	193 249	1 192 503	219	28 412	149 823	0	0	0	221 661	1 342 326

<sup>1</sup>Institutions for the disabled, boarding houses, hotels and tourism accommodation e.g. hotels, motels, guest houses, holiday chalets, bed-and-breakfast accommodation and casinos.

**Table 9 – Number, square metres and value of residential buildings reported as completed to municipalities: dwelling-houses, flats and townhouses and other residential buildings by province (concluded)**

Municipal reporting aggregated to provincial level by year		Residential buildings										
		Dwelling-houses			Flats and townhouses			Other residential buildings and tourism accommodation <sup>1</sup>			Residential buildings reported as completed to municipalities	
		Number of dwelling-houses	Total square metres	Total value R'000	Number of units	Total square metres	Total value R'000	Number of buildings	Total square metres	Total value R'000	Total square metres	Total value R'000
Limpopo	2017	883	93 402	410 617	155	18 021	89 348	2	6 803	33 234	118 226	533 199
	2018	498	101 208	534 150	107	10 211	55 515	8	10 246	56 375	121 665	646 040
	2019	452	100 885	563 918	174	18 615	104 814	3	518	3 051	120 018	671 783
South Africa	2017	24 966	3 564 748	23 954 727	14 048	1 539 872	12 573 629	45	241 568	2 300 250	5 346 188	38 828 606
	2018	22 377	3 285 686	23 255 502	17 825	2 562 728	20 534 729	66	91 649	674 838	5 940 063	44 465 069
	2019	19 832	3 129 649	22 892 526	25 513	3 491 326	29 016 328	35	70 405	584 533	6 691 380	52 493 387

<sup>1</sup>Institutions for the disabled, boarding houses, hotels and tourism accommodation e.g. hotels, motels, guest houses, holiday chalets, bed-and-breakfast accommodation and casinos.

**Table 10 – Number, square metres and value of dwelling-houses reported as completed to municipalities by size of dwelling-house by province**

Municipal reporting aggregated to provincial level by year		Size of dwelling-house									Dwelling-houses reported as completed to municipalities		
		Equal to or smaller than 30 square metres			Larger than 30 square metres and smaller than 80 square metres			Equal to or larger than 80 square metres					
		Number of dwelling-houses	Total square metres	Total value R'000	Number of dwelling-houses	Total square metres	Total value R'000	Number of dwelling-houses	Total square metres	Total value R'000	Number of dwelling-houses	Total square metres	Total value R'000
Western Cape	2017	7	199	583	5 067	234 374	1 309 458	3 896	901 021	5 980 722	8 970	1 135 594	7 290 763
	2018	4	111	519	4 091	188 567	1 100 357	3 644	848 514	5 680 746	7 739	1 037 192	6 781 622
	2019	16	462	3 736	2 648	122 927	727 780	3 225	789 535	5 411 307	5 889	912 924	6 142 823
Eastern Cape	2017	0	0	0	406	20 901	100 412	581	119 313	707 553	987	140 214	807 965
	2018	1	27	171	525	26 510	135 571	595	123 675	821 879	1 121	150 212	957 621
	2019	0	0	0	351	16 697	85 839	625	132 040	880 325	976	148 737	966 164
Northern Cape	2017	0	0	0	2	120	764	55	12 929	91 183	57	13 049	91 947
	2018	0	0	0	14	896	6 971	55	10 788	80 094	69	11 684	87 065
	2019	0	0	0	40	2 464	19 579	98	28 097	219 503	138	30 561	239 082
Free State	2017	0	0	0	228	12 993	50 889	194	40 809	254 575	422	53 802	305 464
	2018	0	0	0	210	11 761	66 642	178	36 071	230 837	388	47 832	297 479
	2019	0	0	0	51	3 130	22 735	185	38 038	228 974	236	41 168	251 709
KwaZulu-Natal	2017	1	30	141	128	7 221	67 555	828	254 122	2 410 131	957	261 373	2 477 827
	2018	8	217	1 084	198	11 752	121 631	835	234 403	2 449 770	1 041	246 372	2 572 485
	2019	6	175	771	137	8 041	70 159	725	227 284	2 443 808	868	235 500	2 514 738
North West	2017	2	46	191	350	20 419	92 572	770	150 685	793 249	1 122	171 150	886 012
	2018	2	52	230	303	17 840	88 116	820	147 931	816 687	1 125	165 823	905 033
	2019	0	0	0	50	3 212	17 756	795	155 380	901 191	845	158 592	918 947
Gauteng	2017	0	0	0	6 736	337 758	1 519 541	3 752	1 224 364	9 467 759	10 488	1 562 122	10 987 300
	2018	0	0	0	5 440	287 193	1 675 493	3 535	1 026 136	8 247 463	8 975	1 313 329	9 922 956
	2019	0	0	0	5 944	313 390	1 786 775	3 359	994 643	8 315 867	9 303	1 308 033	10 102 642
Mpumalanga	2017	0	0	0	593	29 454	130 515	487	104 588	566 317	1 080	134 042	696 832
	2018	0	0	0	709	37 296	177 776	712	174 738	1 019 315	1 421	212 034	1 197 091
	2019	0	0	0	487	28 620	149 334	638	164 629	1 043 169	1 125	193 249	1 192 503

**Table 10 – Number, square metres and value of dwelling-houses reported as completed to municipalities by size of dwelling-house by province (concluded)**

Municipal reporting aggregated to provincial level by year		Size of dwelling-house									Dwelling-houses reported as completed to municipalities		
		Equal to or smaller than 30 square metres			Larger than 30 square metres and smaller than 80 square metres			Equal to or larger than 80 square metres					
		Number of dwelling-houses	Total square metres	Total value R'000	Number of dwelling-houses	Total square metres	Total value R'000	Number of dwelling-houses	Total square metres	Total value R'000	Number of dwelling-houses	Total square metres	Total value R'000
Limpopo	2017	0	0	0	644	30 198	87 056	239	63 204	323 561	883	93 402	410 617
	2018	0	0	0	157	9 708	52 456	341	91 500	481 694	498	101 208	534 150
	2019	0	0	0	106	6 670	35 683	346	94 215	528 235	452	100 885	563 918
South Africa	2017	10	275	915	14 154	693 438	3 358 762	10 802	2 871 035	20 595 050	24 966	3 564 748	23 954 727
	2018	15	407	2 004	11 647	591 523	3 425 013	10 715	2 693 756	19 828 485	22 377	3 285 686	23 255 502
	2019	22	637	4 507	9 814	505 151	2 915 640	9 996	2 623 861	19 972 379	19 832	3 129 649	22 892 526

**Table 11 – Number, square metres and value of flats and townhouses reported as completed to municipalities by province**

Municipal reporting aggregated to provincial level by year		Flats			Townhouses			Flats and townhouses reported as completed to municipalities		
		Number of units	Total square metres	Total value R'000	Number of units	Total square metres	Total value R'000	Number of units	Total square metres	Total value R'000
Western Cape	2017	2 611	260 212	2 057 039	1 195	211 143	1 553 983	3 806	471 355	3 611 022
	2018	4 734	433 635	3 429 338	1 071	204 190	1 549 587	5 805	637 825	4 978 925
	2019	5 018	480 815	3 867 234	1 219	231 163	1 751 889	6 237	711 978	5 619 123
Eastern Cape	2017	28	2 008	12 660	55	6 370	36 948	83	8 378	49 608
	2018	98	5 817	39 632	133	21 619	141 418	231	27 436	181 050
	2019	128	7 838	50 988	165	20 811	137 374	293	28 649	188 362
Northern Cape	2017	0	0	0	17	1 928	13 449	17	1 928	13 449
	2018	0	0	0	2	221	1 737	2	221	1 737
	2019	0	0	0	33	3 209	25 763	33	3 209	25 763
Free State	2017	386	14 068	99 914	198	25 439	171 693	584	39 507	271 607
	2018	85	3 987	29 528	257	40 535	303 766	342	44 522	333 294
	2019	34	1 599	9 385	2	509	3 370	36	2 108	12 755
KwaZulu-Natal	2017	643	74 101	835 111	729	119 979	1 062 722	1 372	194 080	1 897 833
	2018	464	70 735	847 680	348	75 944	655 687	812	146 679	1 503 367
	2019	1 517	196 125	2 331 855	414	85 249	747 719	1 931	281 374	3 079 574
North West	2017	155	11 744	62 598	261	30 141	160 689	416	41 885	223 287
	2018	755	46 188	275 911	360	54 787	307 911	1 115	100 975	583 822
	2019	569	38 376	236 713	86	11 302	61 412	655	49 678	298 125
Gauteng	2017	3 254	229 163	2 327 277	3 952	500 934	3 903 624	7 206	730 097	6 230 901
	2018	2 641	177 428	1 997 033	6 590	1 398 766	10 802 684	9 231	1 576 194	12 799 717
	2019	3 854	228 632	2 345 155	12 081	2 138 671	17 192 834	15 935	2 367 303	19 537 989
Mpumalanga	2017	351	29 269	161 643	58	5 352	24 931	409	34 621	186 574
	2018	61	3 345	19 807	119	15 320	77 495	180	18 665	97 302
	2019	0	0	0	219	28 412	149 823	219	28 412	149 823

**Table 11 – Number, square metres and value of flats and townhouses reported as completed to municipalities by province (concluded)**

Municipal reporting aggregated to provincial level by year		Flats			Townhouses			Flats and townhouses reported as completed to municipalities		
		Number of units	Total square metres	Total value R'000	Number of units	Total square metres	Total value R'000	Number of units	Total square metres	Total value R'000
Limpopo	2017	0	0	0	155	18 021	89 348	155	18 021	89 348
	2018	30	3 506	19 828	77	6 705	35 687	107	10 211	55 515
	2019	18	1 226	7 036	156	17 389	97 778	174	18 615	104 814
South Africa	2017	7 428	620 565	5 556 242	6 620	919 307	7 017 387	14 048	1 539 872	12 573 629
	2018	8 868	744 641	6 658 757	8 957	1 818 087	13 875 972	17 825	2 562 728	20 534 729
	2019	11 138	954 611	8 848 366	14 375	2 536 715	20 167 962	25 513	3 491 326	29 016 328



**Table 12 – Number, square metres and value of other residential buildings reported as completed to municipalities by province**

Municipal reporting aggregated to provincial level by year		Other residential buildings								
		Tourism accommodation and casinos <sup>1</sup>			Other residential buildings excluding tourism accommodation <sup>2</sup>			Other residential buildings reported as completed to municipalities		
		Number of buildings	Total square metres	Total value R'000	Number of buildings	Total square metres	Total value R'000	Number of buildings	Total square metres	Total value R'000
Western Cape	2017	3	49 206	415 752	12	31 302	236 216	15	80 508	651 968
	2018	2	23 449	113 923	36	27 366	210 435	38	50 815	324 358
	2019	2	1 168	6 325	4	14 790	120 248	6	15 958	126 573
Eastern Cape	2017	1	440	2 860	2	3 616	20 160	3	4 056	23 020
	2018	0	0	0	0	0	0	0	0	0
	2019	2	510	3 746	1	492	3 313	3	1 002	7 059
Northern Cape	2017	1	283	1 274	1	652	4 238	2	935	5 512
	2018	0	0	0	0	0	0	0	0	0
	2019	1	475	3 563	0	0	0	1	475	3 563
Free State	2017	0	0	0	3	331	1 791	3	331	1 791
	2018	0	0	0	6	607	3 162	6	607	3 162
	2019	4	1 754	12 954	7	695	4 356	11	2 449	17 310
KwaZulu-Natal	2017	5	16 930	190 653	2	2 559	30 329	7	19 489	220 982
	2018	4	10 573	123 711	2	9 056	99 988	6	19 629	223 699
	2019	2	11 837	127 391	0	0	0	2	11 837	127 391
North West	2017	0	0	0	2	785	4 651	2	785	4 651
	2018	2	1 862	9 188	0	0	0	2	1 862	9 188
	2019	3	4 875	26 338	1	1 822	12 063	4	6 697	38 401
Gauteng	2017	7	126 857	1 344 232	4	1 804	14 860	11	128 661	1 359 092
	2018	1	353	1 753	2	2 489	15 587	3	2 842	17 340
	2019	0	0	0	5	31 469	261 185	5	31 469	261 185
Mpumalanga	2017	0	0	0	0	0	0	0	0	0
	2018	3	5 648	40 716	0	0	0	3	5 648	40 716
	2019	0	0	0	0	0	0	0	0	0

<sup>1</sup>Hotels, motels, guest houses, chalets, bed-and-breakfast accommodation and casinos.

<sup>2</sup>Institutions for the disabled, boarding houses and hostels.

**Table 12 – Number, square metres and value of other residential buildings reported as completed to municipalities by province (concluded)**

Municipal reporting aggregated to provincial level by year		Other residential buildings								
		Tourism accommodation and casinos <sup>1</sup>			Other residential buildings excluding tourism accommodation <sup>2</sup>			Other residential buildings reported as completed to municipalities		
		Number of buildings	Total square metres	Total value R'000	Number of buildings	Total square metres	Total value R'000	Number of buildings	Total square metres	Total value R'000
Limpopo	2017	2	6 803	33 234	0	0	0	2	6 803	33 234
	2018	1	7 618	41 914	7	2 628	14 461	8	10 246	56 375
	2019	0	0	0	3	518	3 051	3	518	3 051
South Africa	2017	19	200 519	1 988 005	26	41 049	312 245	45	241 568	2 300 250
	2018	13	49 503	331 205	53	42 146	343 633	66	91 649	674 838
	2019	14	20 619	180 317	21	49 786	404 216	35	70 405	584 533

<sup>1</sup>Hotels, motels, guest houses, chalets, bed-and-breakfast accommodation and casinos.

<sup>2</sup>Institutions for the disabled, boarding houses and hostels.

**Table 13.1 – Number, square metres and value of non-residential buildings reported as completed to municipalities by province: office and banking space, shopping space and industrial and warehouse space**

Municipal reporting aggregated to provincial level by year		Non-residential buildings								
		Office and banking space			Shopping space			Industrial and warehouse space		
		Number of buildings	Total square metres	Total value R'000	Number of buildings	Total square metres	Total value R'000	Number of buildings	Total square metres	Total value R'000
Western Cape	2017	41	131 791	1 006 802	29	189 939	1 517 280	115	323 540	2 303 677
	2018	32	161 951	1 326 792	27	93 318	721 490	154	268 786	1 734 078
	2019	17	73 610	598 695	24	133 733	1 138 349	165	342 000	2 346 058
Eastern Cape	2017	2	3 361	15 173	2	1 892	9 025	19	20 734	107 236
	2018	3	1 840	11 822	4	2 124	12 023	19	53 642	324 650
	2019	8	13 191	84 518	10	9 307	61 423	38	103 744	699 035
Northern Cape	2017	7	3 704	20 419	2	1 426	11 222	2	2 830	20 034
	2018	3	1 760	13 051	0	0	0	5	2 362	17 455
	2019	4	1 098	8 743	0	0	0	8	10 603	83 425
Free State	2017	3	2 573	17 649	4	983	5 129	2	1 340	7 315
	2018	6	7 786	57 772	3	2 145	12 664	8	14 793	113 216
	2019	4	2 239	11 872	1	234	1 565	8	11 980	77 048
KwaZulu-Natal	2017	14	71 435	749 434	28	527 089	4 803 957	59	178 808	1 023 601
	2018	11	76 881	839 712	15	56 721	563 319	67	141 092	868 172
	2019	10	118 241	1 290 650	22	65 039	677 726	70	375 767	2 266 139
North West	2017	5	6 983	39 978	13	28 110	153 460	17	19 756	94 659
	2018	5	2 379	13 155	9	14 450	74 652	15	19 459	95 566
	2019	5	4 900	24 401	15	19 240	115 658	9	14 617	74 123
Gauteng	2017	70	400 529	3 922 003	63	197 137	1 704 470	114	553 011	2 852 188
	2018	62	349 086	3 424 024	83	120 036	1 106 812	119	578 113	3 232 919
	2019	47	363 182	3 846 968	109	346 419	3 391 428	96	520 196	3 022 906
Mpumalanga	2017	5	3 334	16 687	13	16 180	77 259	12	18 942	108 107
	2018	4	2 336	11 549	12	16 684	81 543	16	18 207	107 171
	2019	8	16 919	126 493	9	28 238	185 481	8	14 229	85 066

**Table 13.1 – Number, square metres and value of non-residential buildings reported as completed to municipalities by province: office and banking space, shopping space and industrial and warehouse space (concluded)**

Municipal reporting aggregated to provincial level by year		Non-residential buildings								
		Office and banking space			Shopping space			Industrial and warehouse space		
		Number of buildings	Total square metres	Total value R'000	Number of buildings	Total square metres	Total value R'000	Number of buildings	Total square metres	Total value R'000
Limpopo	2017	5	2 349	12 147	4	4 855	25 917	14	32 245	162 097
	2018	7	12 033	64 856	7	28 862	156 007	10	15 303	81 046
	2019	3	1 997	11 034	7	8 432	47 970	7	9 504	52 102
South Africa	2017	152	626 059	5 800 292	158	967 611	8 307 719	354	1 151 206	6 678 914
	2018	133	616 052	5 762 733	160	334 340	2 728 510	413	1 111 757	6 574 273
	2019	106	595 377	6 003 374	197	610 642	5 619 600	409	1 402 640	8 705 902

**Table 13.2 – Number, square metres and value of non-residential buildings reported as completed to municipalities by province: schools, nursery schools, crèches, hospitals, churches, sport clubs, recreation clubs and all other non-residential space**

Municipal reporting aggregated to provincial level by year		Non-residential buildings									Non-residential buildings reported as completed to municipalities <sup>1</sup>		
		Schools, nursery schools, crèches and hospitals			Churches, sport and recreation clubs			All other non-residential space					
		Number of buildings	Total square metres	Total value R'000	Number of buildings	Total square metres	Total value R'000	Number of buildings	Total square metres	Total value R'000	Number of buildings	Total square metres	Total value R'000
Western Cape	2017	27	34 768	231 811	18	11 124	69 300	57	61 801	459 411	287	752 963	5 588 281
	2018	20	50 219	349 032	18	12 797	87 098	26	23 530	163 955	277	610 601	4 382 445
	2019	26	85 401	671 532	11	7 373	47 485	33	66 474	465 184	276	708 591	5 267 303
Eastern Cape	2017	1	273	1 733	2	3 903	19 713	4	1 017	5 262	30	31 180	158 142
	2018	3	8 890	56 064	4	1 840	11 050	7	656	3 926	40	68 992	419 535
	2019	2	25 810	163 758	4	3 430	23 887	11	1 942	12 796	73	157 424	1 045 417
Northern Cape	2017	1	16 448	132 258	0	0	0	0	0	0	12	24 408	183 933
	2018	0	0	0	0	0	0	0	0	0	8	4 122	30 506
	2019	1	760	6 232	2	346	2 395	0	0	0	15	12 807	100 795
Free State	2017	0	0	0	5	10 231	77 991	0	0	0	14	15 127	108 084
	2018	3	10 280	78 054	1	326	2 000	0	0	0	21	35 330	263 706
	2019	1	378	3 051	1	478	3 692	0	0	0	15	15 309	97 228
KwaZulu-Natal	2017	5	9 907	78 332	6	11 760	117 328	0	0	0	112	798 999	6 772 652
	2018	5	14 910	119 001	10	9 089	87 003	1	349	2 827	109	299 042	2 480 034
	2019	3	21 207	109 383	10	11 532	107 698	9	16 914	125 761	124	608 700	4 577 357
North West	2017	1	211	1 055	2	1 191	5 955	0	0	0	38	56 251	295 107
	2018	4	3 863	19 314	8	5 378	29 953	1	144	914	42	45 673	233 554
	2019	5	8 191	43 682	6	3 946	21 909	1	200	993	41	51 094	280 766
Gauteng	2017	14	60 129	495 675	12	9 133	76 676	8	28 753	321 166	281	1 248 692	9 372 178
	2018	14	51 972	410 768	7	9 577	60 246	8	1 750	15 526	293	1 110 534	8 250 295
	2019	26	101 996	748 339	10	26 100	203 219	5	10 448	79 672	293	1 368 341	11 292 532
Mpumalanga	2017	2	2 214	11 604	0	0	0	1	373	1 865	33	41 043	215 522
	2018	2	6 124	31 164	1	214	1 020	2	6 791	33 724	37	50 356	266 171
	2019	2	773	4 009	1	2 771	14 686	3	3 213	15 956	31	66 143	431 691

<sup>1</sup>Office and banking space, shopping space, industrial and warehouse space, schools, nursery schools, crèches, hospitals, churches, sport clubs, recreation clubs and all other non-residential space (Tables 13.1 and 13.2).

**Table 13.2 – Number, square metres and value of non-residential buildings reported as completed to municipalities by province: schools, nursery schools, crèches, hospitals, churches, sport clubs, recreation clubs and all other non-residential space (concluded)**

Municipal reporting aggregated to provincial level by year		Non-residential buildings									Non-residential buildings reported as completed to municipalities <sup>1</sup>		
		Schools, nursery schools, crèches and hospitals			Churches, sport and recreation clubs			All other non-residential space					
		Number of buildings	Total square metres	Total value R'000	Number of buildings	Total square metres	Total value R'000	Number of buildings	Total square metres	Total value R'000	Number of buildings	Total square metres	Total value R'000
Limpopo	2017	3	2 844	14 627	0	0	0	2	5 504	29 116	28	47 797	243 904
	2018	1	645	3 412	1	589	2 507	0	0	0	26	57 432	307 828
	2019	1	1 072	4 761	0	0	0	2	778	4 292	20	21 783	120 159
South Africa	2017	54	126 794	967 095	45	47 342	366 963	72	97 448	816 820	835	3 016 460	22 937 803
	2018	52	146 903	1 066 809	50	39 810	280 877	45	33 220	220 872	853	2 282 082	16 634 074
	2019	67	245 588	1 754 747	45	55 976	424 971	64	99 969	704 654	888	3 010 192	23 213 248

<sup>1</sup>Office and banking space, shopping space, industrial and warehouse space, schools, nursery schools, crèches, hospitals, churches, sport clubs, recreation clubs and all other non-residential space (Tables 13.1 and 13.2).

**Table 14 – Number, square metres and value of additions and alterations reported as completed to municipalities by province**

Municipal reporting aggregated to provincial level by year		Additions and alterations												
		Dwelling-houses			Other residential buildings			Non-residential buildings			Internal alterations	Additions and alterations reported as completed to municipalities		
		Number of plans	Total square metres	Total value R'000	Number of plans	Total square metres	Total value R'000	Number of plans	Total square metres	Total value R'000	Total value R'000	Number of plans	Total square metres	Total value R'000
Western Cape	2017	8 864	573 759	3 327 773	467	30 677	236 739	481	142 823	991 915	592 086	9 812	747 259	5 148 513
	2018	6 539	435 016	2 724 347	518	30 940	258 179	466	179 171	1 270 316	479 358	7 523	645 127	4 732 200
	2019	5 894	385 376	2 541 932	664	52 476	435 331	490	173 370	1 249 963	625 577	7 048	611 222	4 852 803
Eastern Cape	2017	1 559	91 389	495 599	21	2 841	16 384	88	28 788	170 825	52 461	1 668	123 018	735 269
	2018	1 283	89 174	561 506	42	4 240	26 615	80	36 422	233 815	24 591	1 405	129 836	846 527
	2019	2 098	151 764	997 354	28	3 293	21 996	147	63 824	421 352	49 205	2 273	218 881	1 489 907
Northern Cape	2017	268	18 968	138 375	1	33	265	22	4 167	26 085	8 883	291	23 168	173 608
	2018	401	29 836	224 135	1	174	1 305	20	10 037	72 496	16 277	422	40 047	314 213
	2019	286	26 626	210 824	0	0	0	10	6 388	50 141	7 782	296	33 014	268 747
Free State	2017	610	38 008	193 237	7	878	5 652	11	962	4 594	94 274	628	39 848	297 757
	2018	320	20 981	123 120	6	2 245	17 068	17	8 980	65 495	28 976	343	32 206	234 659
	2019	482	32 557	185 840	4	374	2 452	11	3 507	22 031	20 367	497	36 438	230 690
KwaZulu-Natal	2017	1 521	127 750	1 317 046	118	12 165	114 352	121	52 954	413 774	171 303	1 760	192 869	2 016 475
	2018	2 088	170 325	1 832 085	74	7 168	79 440	117	48 141	426 376	116 539	2 279	225 634	2 454 440
	2019	1 561	122 886	1 375 005	120	9 397	99 223	112	86 861	850 348	222 873	1 793	219 144	2 547 449
North West	2017	451	32 827	156 110	1	22	140	50	25 401	149 176	11 970	502	58 250	317 396
	2018	812	59 477	348 749	11	2 531	13 828	23	10 261	64 771	2 576	846	72 269	429 924
	2019	525	39 979	234 108	1	22	146	49	20 882	131 164	5 631	575	60 883	371 049
Gauteng	2017	2 743	258 531	1 915 054	21	1 303	11 298	133	85 931	650 418	110 064	2 897	345 765	2 686 834
	2018	2 504	241 902	1 866 031	17	3 039	25 173	143	100 239	753 790	66 612	2 664	345 180	2 711 606
	2019	2 385	245 616	1 993 246	61	6 299	49 543	129	109 189	790 279	52 273	2 575	361 104	2 885 341
Mpumalanga	2017	368	28 465	137 493	2	273	1 964	12	5 178	24 031	24 438	382	33 916	187 926
	2018	542	50 842	287 941	3	228	1 538	16	9 293	46 129	207 006	561	60 363	542 614
	2019	603	45 965	269 591	0	0	0	19	5 373	29 696	261 897	622	51 338	561 184

**Table 14 – Number, square metres and value of additions and alterations reported as completed to municipalities by province (concluded)**

Municipal reporting aggregated to provincial level by year		Additions and alterations												
		Dwelling-houses			Other residential buildings			Non-residential buildings			Internal alterations	Additions and alterations reported as completed to municipalities		
		Number of plans	Total square metres	Total value R'000	Number of plans	Total square metres	Total value R'000	Number of plans	Total square metres	Total value R'000	Total value R'000	Number of plans	Total square metres	Total value R'000
Limpopo	2017	42	3 979	19 929	2	159	1 031	11	2 852	14 236	5 000	55	6 990	40 196
	2018	57	5 145	27 007	1	309	1 314	4	681	3 719	18 936	62	6 135	50 976
	2019	76	7 474	42 323	10	314	1 732	5	1 411	7 920	12 932	91	9 199	64 907
South Africa	2017	16 426	1 173 676	7 700 616	640	48 351	387 825	929	349 056	2 445 054	1 070 479	17 995	1 571 083	11 603 974
	2018	14 546	1 102 698	7 994 921	673	50 874	424 460	886	403 225	2 936 907	960 871	16 105	1 556 797	12 317 159
	2019	13 910	1 058 243	7 850 223	888	72 175	610 423	972	470 805	3 552 894	1 258 537	15 770	1 601 223	13 272 077



**Table 15 – Municipalities covered in the monthly survey: Western Cape**

<b>Municipality</b>	<b>Main towns within municipal boundaries</b>	<b>District municipality</b>
Bitou	Plettenberg Bay	Eden
Breede Valley	De Doorns, Rawsonville, Touws River, Worcester	Cape Winelands
City of Cape Town	Bellville, Blue Downs, Brackenfell, Cape Town City Centre, Durbanville, Eersterivier, Fish Hoek, Goodwood, Gordon's Bay, Gugulethu, Khayelitsha, Kraaifontein, Kuilsrivier, Langa, Mfuleni, Milnerton, Mitchells Plain, Nyanga, Parow, Plumstead, Simon's Town, Somerset West, Strand	City of Cape Town
Drakenstein	Blouville, Hermon, Paarl, Soetendal, Wellington	Cape Winelands
George	George, Herolds Bay, Pacaltsdorp, Wilderness	Eden
Knysna	Knysna, Sedgefield	Eden
Mossel Bay	Groot Brakrivier, Herbertsdale, Klein Brakrivier, Mossel Bay	Eden
Oudtshoorn	De Rust, Dysseisdorp, Oudtshoorn	Eden
Overstrand	Betty's Bay, Fisherhaven, Gansbaai, Hangklip, Hawston, Hermanus, Kleinmond, Onrus, Rooiels Bay, Stanford, Vermont	Overberg
Saldanha Bay	Hopefield, Langebaan, Saldanha, Vredenburg	West Coast
Stellenbosch	Franschhoek, Pniel, Stellenbosch	Cape Winelands
Swartland	Darling, Koringberg, Malmesbury, Moorreesburg, Yzerfontein	West Coast

**Table 16 – Municipalities covered in the monthly survey: Eastern Cape**

<b>Municipality</b>	<b>Main towns within municipal boundaries</b>	<b>District municipality</b>
Buffalo City	Beacon Bay, Bisho, East London, Gonubie, King William's Town, Mdantsane, Zwelitsha	Buffalo City
King Sabata Dalindyebo	Mqanduli, Mthatha	O R Tambo
Kouga	Cape St Francis, Hankey, Humansdorp, Jeffreys Bay, Oyster Bay, Patensie, St Francis Bay	Sarah Baartman
Makana	Alicedale, Makhanda, Riebeeck East	Sarah Baartman
Ndlambe	Alexandria, Bathurst, Kenton-on-Sea, Port Alfred	Sarah Baartman
Nelson Mandela	Despatch, Port Elizabeth, Uitenhage	Nelson Mandela Bay
Walter Sisulu	Aliwal North, Jamestown	Joe Gqabi

**Table 17 – Municipalities covered in the monthly survey: Northern Cape**

<b>Municipality</b>	<b>Main towns within municipal boundaries</b>	<b>District municipality</b>
Dawid Kruiper	Dagbreek, Gelukspruit, Karos, Louisvale, Sprigg, Upington	Z F Mgcawu
Ga-Segonyana	Bekker, Ga-Mopedi, Gathlose, Kuruman, Mothibistad, Seoding	John Taolo
Kai !Garib	Kakamas, Keimoes, Kenhardt	Z F Mgcawu
Sol Plaatje	Kenilworth, Kimberley, Modderrivier, Ritchie, Riverton, Spytfontein	Frances Baard

**Table 18 – Municipalities covered in the monthly survey: Free State**

<b>Municipality</b>	<b>Main towns within municipal boundaries</b>	<b>District municipality</b>
Dihlabeng	Bethlehem, Bohlokong, Clarens, Fouriesburg, Paul Roux, Rosendal	Thabo Mofutsanyana
Maluti-a-Phofung	Harrismith, Kestell, Phuthaditjhaba	Thabo Mofutsanyana
Mangaung	Bloemfontein, Botshabelo, Thaba Nchu	Mangaung
Mantsopa	Excelsior, Hobhouse, Ladybrand, Manyatseng, Thaba Phatshoa, Tweespruit	Thabo Mofutsanyana
Matjhabeng	Allanridge, Hennenman, Kutlwanong, Meloding, Odendaalsrus, Thabong, Ventersburg, Virginia, Welkom	Lejweleputswa
Metsimaholo	Deneysville, Oranjeville, Sasolburg	Fezile Dabi
Moqhaka	Kroonstad, Maokeng, Steynsrus, Viljoenskroon	Fezile Dabi
Ngwathe	Edenville, Heilbron, Koppies, Parys, Vredefort	Fezile Dabi

**Table 19 – Municipalities covered in the monthly survey: KwaZulu-Natal**

<b>Municipality</b>	<b>Main towns within municipal boundaries</b>	<b>District municipality</b>
Alfred Duma	Colenso, Ekuvukeni, Etholeni, Ingwe, Kliprivier, Ladysmith, Limehill, Mabaso, Rockcliff, Sams Hoek	uThukela
City of uMhlathuze	Empangeni, Richards Bay	King Cetshwayo
eThekwini	Amanzimtoti, Botha's Hill, Cato Ridge, Clermont, Drummond, Durban, Hillcrest, Inchanga, Kingsburgh, Kloof, KwaDabeka, KwaMakhutha, KwaMashu, Mount Edgecombe, Mpumalanga, New Germany, Pinetown, Queensburgh, Tongaat, Umdloti, Umhlanga, Umlazi, Verulam, Westville	eThekwini
Greater Kokstad	Bonny Ridge, Franklin, Kingscote, Kokstad, New Amalfi, Swartberg	Harry Gwala
KwaDukuza	Ballito, Blythedale Beach, Shakaskraal, Stanger, Tinley Manor Beach, Zinkwazi Beach	Ilembe
Msunduzi	Edendale, Pietermaritzburg	uMgungundlovu
Newcastle	Madadeni, Newcastle, Osizweni	Amajuba
Ray Nkonyeni	Hibberdene, Margate, Marina Beach, Munster, Port Edward, Port Shepstone, Ramsgate, Shelly Beach, Southbroom, St Michael's-on-Sea, Trafalgar, Uvongo	Ugu
Umdoni	Pennington, Scottburgh, Umzinto	Ugu
uMngeni	Hilton, Howick, Nottingham Road	uMgungundlovu

**Table 20 – Municipalities covered in the monthly survey: North West**

<b>Municipality</b>	<b>Main towns within municipal boundaries</b>	<b>District municipality</b>
City of Matlosana	Hartbeesfontein, Klerksdorp, Orkney, Stilfontein	Dr Kenneth Kaunda
Ditsobotla	Coligny, Itsoseng, Lichtenburg	Ngaka Modiri Molema
Madibeng	Brits, De Wildt, Hartbeespoort, Letlhabile	Bojanala Platinum
Mahikeng	Mafikeng, Ottoshoop	Ngaka Modiri Molema
Naledi	Stella, Vryburg	Dr Ruth Segomotsi Mompati
Ramotshere Moiloa	Zeerust	Ngaka Modiri Molema
Rustenburg	Marikana, Rustenburg	Bojanala Platinum
Tlokwe City Council	Potchefstroom	Dr Kenneth Kaunda

**Table 21 – Municipalities covered in the monthly survey: Gauteng**

<b>Municipality</b>	<b>Main towns within municipal boundaries</b>	<b>District municipality</b>
City of Johannesburg	Alexandra, Eikenhof, Eldorado Park, Ennerdale, Fourways, Florida, Grasmere, Halfway House, Honeydew, Johannesburg, Kyalami, Lawley Estate, Lenasia, Midrand, Modderfontein, Randburg, Randjiesfontein, Rivonia, Roodepoort, Sandton, Soweto, Van Wyksrust	City of Johannesburg
City of Tshwane	Akasia, Atteridgeville, Babelegi, Bon Accord, Bronkhorstspuit, Centurion, Diloppe, Doornrandjies, Ekangala, Erasmia, Ga-Mokone, Ga-Rankuwa, Garsfontein, Hammanskraal, Irene, Klippan, Mabopane, Mamelodi, Onderstepoort, Pinedene, Pretoria, Pretoria North, Soshanguve, Temba, Tierpoort, Tswaing, Valhalla, Welbekend, Winterveld	City of Tshwane
Ekurhuleni	Alberton, Bedfordview, Benoni, Boksburg, Brakpan, Daveyton, Duduza, Edenvale, Germiston, Katlehong, Kempton Park, KwaThema, Nigel, Springs, Tembisa, Thokoza, Tsakane, Vosloorus	Ekurhuleni
Emfuleni	Boipatong, Bophelong, Evaton, Sebokeng, Sharpeville, Vanderbijlpark, Vereeniging	Sedibeng
Lesedi	Heidelberg, Rensburgdorp, Ratanda	Sedibeng
Merafong City	Carletonville, Fochville, Khutsong	West Rand
Midvaal	Daleside, De Deur, Henly-on-Klip, Highbury, Meyerton, Randvaal, Walkerville	Sedibeng
Mogale City	Battery, Elberta, Hekpoort, Krugersdorp, Luipaardsvlei, Magaliesburg, Muldersdrift, Nooitgedacht, Thorndale	West Rand
Randfontein	Finsbury, Kocksoord, Mohlakeng, Randfontein	West Rand
Westonaria	Bekkersdal, Venterspos, Westonaria	West Rand

**Table 22 – Municipalities covered in the monthly survey: Mpumalanga**

<b>Municipality</b>	<b>Main towns within municipal boundaries</b>	<b>District municipality</b>
City of Mbombela	Hazyview, KaNyamazane, Nelspruit, White River	Ehlanzeni
Emalahleni	KwaGuqa, Witbank	Nkangala
Govan Mbeki	Bethal, Evander, Leandra, Secunda	Gert Sibande
Msukaligwa	Breyton, Chrissiesmeer, Davel, Ermelo, Lothair, Sheepmoor, Warbuton	Gert Sibande
Nkomazi	Hectorspruit, Komatipoort, Malelane, Marloth Park	Ehlanzeni
Steve Tshwete	Hendrina, Mhluzi, Middelburg	Nkangala
Victor Khanye	Argent, Delmas, Eloff, Sundra	Nkangala

**Table 23 – Municipalities covered in the monthly survey: Limpopo**

<b>Municipality</b>	<b>Main towns within municipal boundaries</b>	<b>District municipality</b>
Greater Tzaneen	Haenertsburg, Letsitele, Politsi, Rubbervale, Nkowankowa, Tzaneen	Mopani
Modimolle	Haakdong, Mabaleng, Modimolle, Palala	Waterberg
Mogalakwena	Drummondlea, Mahwelereng, Mokopane, Uitzicht	Waterberg
Mookgophong	Crecy, Immerpan, Mookgophong, Thusang	Waterberg
Musina	Beitbridge, Bridgewater, Brombeek, Evangelina, Huntleigh, Mopane, Musina, Tshipise	Vhembe
Polokwane	Polokwane, Seshego	Capricorn
Thabazimbi	Dwaalboom, Northam, Rooiberg, Thabazimbi	Waterberg

## Explanatory notes

### Introduction

- 1 Statistics South Africa (Stats SA) conducts a monthly survey of metropolitan municipalities and large local municipalities on building plans passed and buildings completed for the private sector. This publication contains aggregated data for the twelve months of the calendar year 2019. The survey collects detailed information of building plans passed and buildings completed reported for:
- residential buildings;
  - non-residential buildings; and
  - additions and alterations.

The figures obtained from municipalities do not include the bulk of low-cost dwelling-houses. According to some municipalities they are not always notified about subsidised low-cost housing projects being executed in their area of jurisdiction.

### Scope of the survey

- 2 This survey covers metropolitan municipalities and large local municipalities conducting activities for the private sector regarding:
- approval of building plans; and
  - final inspection of completed buildings and issuing of occupation certificates.

### Classification

- 3 Building activities are classified in Division 5 according to the 1993 edition of the *Standard Industrial Classification of all Economic Activities (SIC), Fifth Edition, Report No. 09-90-02*. The SIC is based on the 1990 *International Standard Industrial Classification of all Economic Activities (ISIC)* with suitable adaptations for local conditions.

### Statistical unit

- 4 The statistical unit for the collection of information is a municipality.

### Survey methodology and design

- 5 Stats SA conducts a monthly survey of metropolitan municipalities and large local municipalities on building plans passed and buildings completed. An annual survey of the remaining municipalities is conducted regarding buildings completed. The monthly survey represents approximately 88 per cent of the total value of buildings completed. Information is collected by email, telephone and visits.

### Comparison between building plans passed and buildings completed

- 6 No direct comparison can be made between building plans passed and buildings completed for the following reasons:
- an unknown number of building plans are passed and afterwards not executed;
  - if building operations have not commenced within the first year after approval, building plans are resubmitted;
  - the time-lag between the date of passing of a building plan and the date of completion of the building varies considerably; and
  - according to municipalities, final inspections of completed buildings are not always executed and therefore not recorded as completed.

### Reliability of estimates

- 7 Inaccuracies may occur because of imperfections in reporting by municipalities. Every effort is made to reduce errors to a minimum by carefully editing, evaluating and querying of data.

### Collection rate

- 8 The collection rate for the year 2019 was 95,4%.



- Number of dwelling-houses** **9** The number of dwelling-houses is shown and not the number of plans passed, since one plan may cover more than one dwelling-house.
- Related publications** **10** Users may also wish to refer to the following publications:
- P5041.1 - *Selected building statistics of the private sector as reported by local government institutions* issued monthly.
  - P9101.2 - *Actual and expected expenditure on construction by the public sector per region* issued annually.
  - *Building Statistics* (Report No. 50-11-01) issued annually.
- Rounding-off of figures** **11** The figures in the tables have, where necessary, been rounded off to the nearest digit shown. There may, therefore, be slight discrepancies between the sums of the constituent items and the totals shown.
- Symbols and abbreviations** **12**
- |          |   |
|----------|---|
| 0        | nil or figure too small to publish  |
| *        | revised   |
| ..       | no data reported  |
| Stats SA | Statistics South Africa   |
| SIC      | Standard Industrial Classification of all Economic Activities               |
| ISIC     | International Standard Industrial Classification of all Economic Activities |
| GDP      | Gross domestic product  |

## Glossary

<b>Additions and alterations</b>	Extensions to existing buildings as well as internal and external alterations of existing buildings.
<b>Annual percentage change</b>	The annual percentage change is the change in the actual values of building activities (building plans passed or buildings completed) of the relevant year compared with the actual values of building activities (building plans passed or buildings completed) of the previous year expressed as a percentage.
<b>Block of flats</b>	High-density housing consisting of a number of self-contained dwelling-units with at least one living-room together with a kitchen and bathroom conjoined to similar units in one building.
<b>District municipality</b>	A municipality that has municipal executive and legislative authority in an area that includes more than one municipality, and which is described in section 155(1) of the Constitution as a category C municipality (refer to Local Government: Municipal Structure Act, 1998 (Act No. 117 of 1998)).
<b>Dwelling-house</b>	A free-standing, complete structure on a separate stand or a self-contained dwelling-unit, e.g. granny flat, on the same premises as an existing residence. Out-buildings and garages are included.
<b>Municipality</b>	A generic term describing the unit of government in the third sphere responsible for local government in a geographically demarcated area. It includes district, metropolitan and local municipalities.
<b>Local municipality</b>	A municipality that shares municipal executive and legislative authority in its area with a district municipality within whose area it falls, and which is described in section 155(1) of the Constitution as a category B municipality (refer to Local Government: Municipal Structure Act, 1998 (Act No. 117 of 1998)).
<b>Metropolitan municipality</b>	A municipality that has municipal executive and legislative authority in an area that includes more than one municipality, and which is described in section 155(1) of the Constitution as a category A municipality (refer to Local Government: Municipal Structure Act, 1998 (Act No. 117 of 1998)).
<b>Non-residential buildings</b>	Factories and commercial, financial and other office buildings, as well as other buildings not used for residential purposes, such as churches, halls, clubs, schools and hospitals.
<b>Other residential buildings</b>	Institutions for the disabled, boarding houses, hostels and tourism accommodation e.g. hotels, motels, guest houses, holiday chalets, bed-and-breakfast accommodation, entertainment centres and casinos.
<b>Reference period</b>	Reference period for this statistical release refers to the calendar year 2019.
<b>Residential buildings</b>	Dwelling-houses, flats, townhouses and other residential buildings.
<b>Townhouses</b>	Multiple, medium-density dwelling-units including cluster housing, group housing, simplexes, duplexes, triplexes and other similar dwelling-units which are usually grouped together, with one level of each unit on ground level. This category excludes blocks of flats.

## General information

Stats SA publishes approximately 300 different statistical releases each year. It is not economically viable to produce them in more than one of South Africa's eleven official languages. Since the releases are used extensively, not only locally but also by international economic and social-scientific communities, Stats SA releases are only published in English.

Stats SA has copyright on this publication. Users may apply the information as they wish, provided that they acknowledge Stats SA as the source of the basic data wherever they process, apply, utilise, publish or distribute the data; and also that they specify that the relevant application and analysis (where applicable) result from their own processing of the data.

### Advance release calendar

An advance release calendar is disseminated on [www.statssa.gov.za](http://www.statssa.gov.za)

### Stats SA products

A complete set of Stats SA publications is available at the Stats SA Library and the following libraries:

National Library of South Africa, Pretoria Division  
National Library of South Africa, Cape Town Division  
Natal Society Library, Pietermaritzburg  
Library of Parliament, Cape Town  
Bloemfontein Public Library  
Johannesburg Public Library  
Eastern Cape Library Services, King William's Town  
Central Regional Library, Polokwane  
Central Reference Library, Mbombela  
Central Reference Collection, Kimberley  
Central Reference Library, Mmabatho

Stats SA also provides a subscription service.

### Electronic services

A large range of data are available via on-line services. For more details about our electronic data services, contact Stats SA's user information services at (012) 310 8600. You can visit us on the Internet at: [www.statssa.gov.za](http://www.statssa.gov.za)

### Enquiries

Telephone number: (012) 310 8007 (technical enquiries)  
(012) 310 8600 (user information services)

Email: nicolaic@statssa.gov.za (technical enquiries)  
info@statssa.gov.za (user information services)

Postal address: Private Bag X44, Pretoria, 0001

*Produced by Stats SA*