

**STATISTICAL RELEASE**  
**P5041.1**

**Selected building statistics of the private sector  
as reported by local government institutions  
(Preliminary)**

May 2017

Embargoed until:  
20 July 2017  
13:00

**ENQUIRIES:**  
Nicolai Claassen  
Tel: (012) 310 8007

**FORTHCOMING ISSUE:**  
June 2017

**EXPECTED RELEASE DATE:**  
17 August 2017

[www.statssa.gov.za](http://www.statssa.gov.za)  
[info@statssa.gov.za](mailto:info@statssa.gov.za)  
T +27 12 310 8911  
F +27 12 310 8500

Private Bag X44, Pretoria, 0001, South Africa  
ISibalo House, Koch Street, Salvokop, Pretoria, 0002



## Contents

<b>Results for January to May 2017.....</b>	<b>3</b>
<b>Tables</b>	
Table 1 Value and percentage change of recorded building plans passed by larger municipalities at current prices by type of building .....	9
Table 2 Seasonally adjusted value and percentage change of recorded building plans passed by larger municipalities at current prices by type of building .....	10
Table 3 Value and percentage change of recorded building plans passed by larger municipalities at constant 2015 prices by type of building .....	11
Table 4 Seasonally adjusted value and percentage change of recorded building plans passed by larger municipalities at constant 2015 prices by type of building .....	12
Table 5 Value and percentage change of buildings reported as completed to larger municipalities at current prices by type of building .....	13
Table 6 Seasonally adjusted value and percentage change of buildings reported as completed to larger municipalities at current prices by type of building .....	14
Table 7 Value and percentage change of buildings reported as completed to larger municipalities at constant 2015 prices by type of building .....	15
Table 8 Seasonally adjusted value and percentage change of buildings reported as completed to larger municipalities at constant 2015 prices by type of building .....	16
Table 9 Recorded building plans passed by larger municipalities at current prices by type of building: South Africa .....	17
Table 10 Recorded building plans passed by larger municipalities at current prices by type of building: Western Cape.....	18
Table 11 Recorded building plans passed by larger municipalities at current prices by type of building: Eastern Cape.....	19
Table 12 Recorded building plans passed by larger municipalities at current prices by type of building: Northern Cape .....	20
Table 13 Recorded building plans passed by larger municipalities at current prices by type of building: Free State.....	21
Table 14 Recorded building plans passed by larger municipalities at current prices by type of building: KwaZulu-Natal .....	22
Table 15 Recorded building plans passed by larger municipalities at current prices by type of building: North West.....	23
Table 16 Recorded building plans passed by larger municipalities at current prices by type of building: Gauteng.....	24
Table 17 Recorded building plans passed by larger municipalities at current prices by type of building: Mpumalanga.....	25
Table 18 Recorded building plans passed by larger municipalities at current prices by type of building: Limpopo.....	26
Table 19 Buildings reported as completed to larger municipalities at current prices by type of building: South Africa .....	27
Table 20 Buildings reported as completed to larger municipalities at current prices by type of building: Western Cape.....	28
Table 21 Buildings reported as completed to larger municipalities at current prices by type of building: Eastern Cape.....	29
Table 22 Buildings reported as completed to larger municipalities at current prices by type of building: Northern Cape .....	30
Table 23 Buildings reported as completed to larger municipalities at current prices by type of building: Free State.....	31
Table 24 Buildings reported as completed to larger municipalities at current prices by type of building: KwaZulu-Natal .....	32
Table 25 Buildings reported as completed to larger municipalities at current prices by type of building: North West.....	33

Table 26	Buildings reported as completed to larger municipalities at current prices by type of building: Gauteng .....	34
Table 27	Buildings reported as completed to larger municipalities at current prices by type of building: Mpumalanga .....	35
Table 28	Buildings reported as completed to larger municipalities at current prices by type of building: Limpopo .....	36
<b>Explanatory notes</b> .....		<b>37</b>
<b>Glossary</b> .....		<b>40</b>
<b>Technical enquiries</b> .....		<b>41</b>
<b>General information</b> .....		<b>42</b>

## Results for January to May 2017

**Table A – Recorded building plans passed by larger municipalities at current prices:  
January to May 2016 versus January to May 2017**

Estimates at current prices	January to May 2016 1/	January to May 2017 1/	Difference in value between January to May 2016 and January to May 2017	% change between January to May 2016 and January to May 2017
	R'000	R'000	R'000	
<b>Residential buildings</b>	<b>21 862 494</b>	<b>20 204 365</b>	<b>-1 658 129</b>	<b>-7,6</b>
-Dwelling-houses	13 457 351	12 554 667	-902 684	-6,7
-Flats and townhouses	6 609 661	7 505 716	896 055	13,6
-Other residential buildings	1 795 482	143 982	-1 651 500	-92,0
<b>Non-residential buildings</b>	<b>13 042 141</b>	<b>8 583 488</b>	<b>-4 458 653</b>	<b>-34,2</b>
<b>Additions and alterations</b>	<b>10 262 362</b>	<b>10 566 005</b>	<b>303 643</b>	<b>3,0</b>
<b>Total</b>	<b>45 166 997</b>	<b>39 353 858</b>	<b>-5 813 139</b>	<b>-12,9</b>

1/ 2016 and 2017 figures should be regarded as preliminary because of possible backlogs and incomplete reporting by municipalities.

### Total value of recorded building plans passed at current prices

The value of recorded building plans passed (at current prices) decreased by 12,9% (-R5 813,1 million) during January to May 2017 compared with January to May 2016.

Decreases were recorded for non-residential buildings (-34,2% or -R4 458,7 million) and residential buildings (-7,6% or -R1 658,1 million) – see Table A.

**Table B – Recorded building plans passed by larger municipalities aggregated to provincial level:  
January to May 2016 versus January to May 2017**

Estimates at current prices	January to May 2016 1/	January to May 2017 1/	% contribution to the total value of building plans passed during January to May 2016	% change between January to May 2016 and January to May 2017	Contribution (% points) to the % change in the value of building plans passed between January to May 2016 and January to May 2017 2/	Difference in value between January to May 2016 and January to May 2017
	R'000	R'000				
Western Cape	11 189 681	11 340 925	24,8	1,4	0,3	151 244
Eastern Cape	1 709 615	2 059 998	3,8	20,5	0,8	350 383
Northern Cape	400 810	256 309	0,9	-36,1	-0,3	-144 501
Free State	1 412 828	1 309 188	3,1	-7,3	-0,2	-103 640
KwaZulu-Natal	9 582 548	7 444 292	21,2	-22,3	-4,7	-2 138 256
North West	1 263 304	1 682 208	2,8	33,2	0,9	418 904
Gauteng	17 285 028	13 238 302	38,3	-23,4	-9,0	-4 046 726
Mpumalanga	1 660 393	1 148 339	3,7	-30,8	-1,1	-512 054
Limpopo	662 790	874 297	1,5	31,9	0,5	211 507
<b>Total</b>	<b>45 166 997</b>	<b>39 353 858</b>	<b>100,0</b>	<b>-12,9</b>	<b>-12,9</b>	<b>-5 813 139</b>

1/ 2016 and 2017 figures should be regarded as preliminary because of possible backlogs and incomplete reporting by municipalities.

2/ The contribution (percentage points) is calculated by multiplying the percentage change of each province between January to May 2016 and January to May 2017 by the percentage contribution of the corresponding province to the total value of building plans passed during January to May 2016, divided by 100.

The largest negative contributions to the total decrease of 12,9% (-R5 813,1 million) were made by Gauteng (contributing -9,0 percentage points or -R4 046,7 million) and KwaZulu-Natal (contributing -4,7 percentage points or -R2 138,3 million) – see Table B.

**Table C – Recorded building plans passed by larger municipalities at constant 2015 prices: January to May 2016 versus January to May 2017**

Estimates at constant 2015 prices	January to May 2016 1/	January to May 2017 1/	Difference in value between January to May 2016 and January to May 2017	% change between January to May 2016 and January to May 2017
	R'000	R'000	R'000	
Residential buildings	20 898 818	18 174 882	-2 723 936	-13,0
Non-residential buildings	12 505 854	7 725 914	-4 779 940	-38,2
Additions and alterations	9 809 857	9 504 407	-305 450	-3,1
<b>Total</b>	<b>43 214 529</b>	<b>35 405 203</b>	<b>-7 809 326</b>	<b>-18,1</b>

1/ 2016 and 2017 figures should be regarded as preliminary because of possible backlogs and incomplete reporting by municipalities.

### Real value of recorded building plans passed

The real value of recorded building plans passed (at constant 2015 prices) decreased by 18,1% (-R7 809,3 million) year-on-year during January to May 2017. All three major building categories recorded decreases. The largest percentage decrease was recorded for non-residential buildings (-38,2% or -R4 779,9 million), followed by residential buildings (-13,0% or -R2 723,9 million) and additions and alterations (-3,1% or -R305,5 million) – see Table C.

**Table D – Seasonally adjusted three-monthly key figures regarding recorded building plans passed by larger municipalities at constant 2015 prices**

Seasonally adjusted estimates at constant 2015 prices	December 2016 to February 2017	March to May 2017	% change between December 2016 to February 2017 and March to May 2017
	R'000	R'000	
Residential buildings	13 328 278	11 152 719	-16,3
Non-residential buildings 1/	4 907 505	4 153 191	-15,4
Additions and alterations	6 282 900	6 083 945	-3,2
<b>Total</b>	<b>24 518 683</b>	<b>21 389 854</b>	<b>-12,8</b>

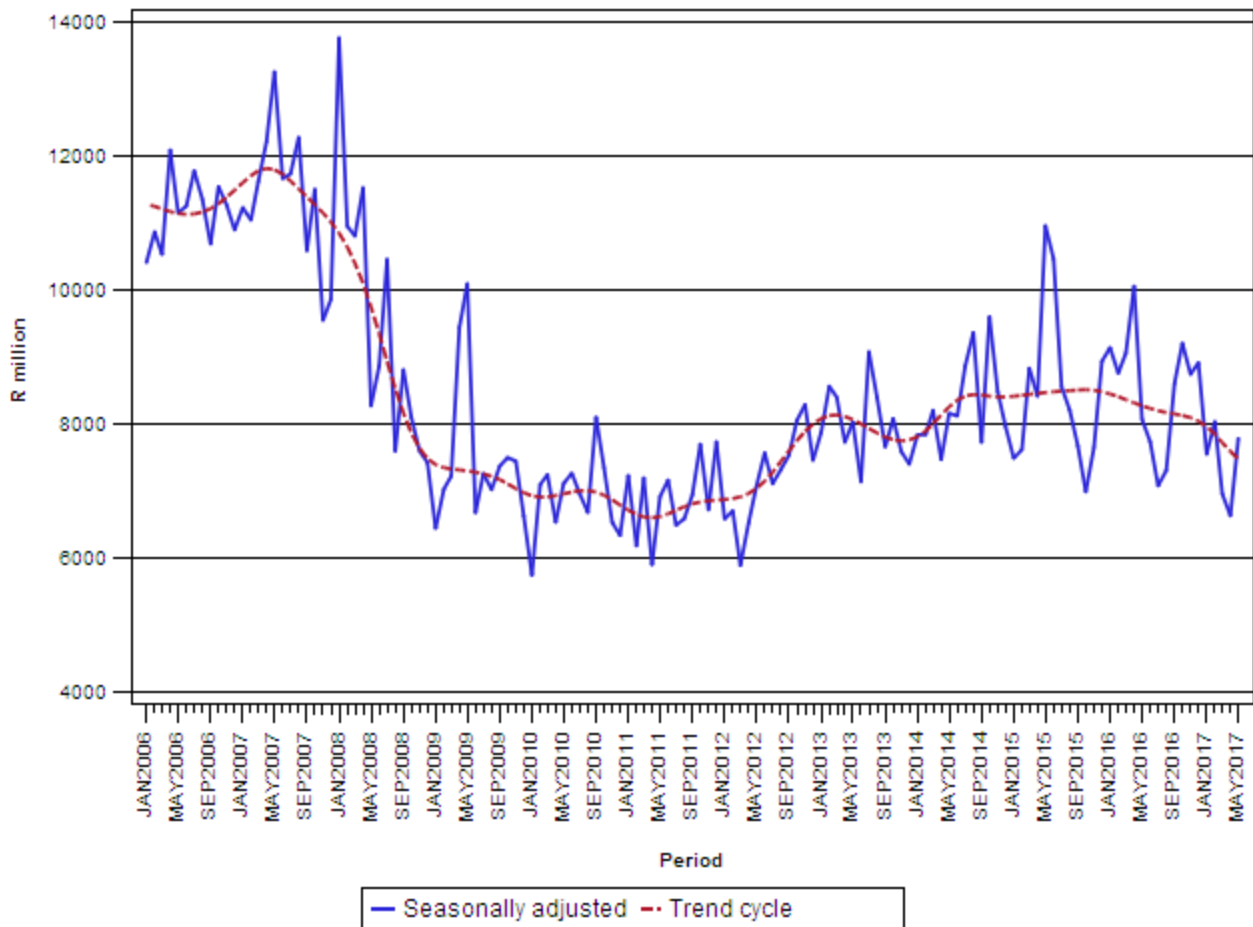
1/ Not seasonally adjusted because the presence of seasonality is not significant. See notes 10 and 11 on page 38.

### Seasonally adjusted real value of recorded building plans passed

The seasonally adjusted real value of recorded building plans passed decreased by 12,8% in the three months ended May 2017 compared with the previous three months. Decreases were recorded for residential buildings (-16,3%), non-residential buildings (-15,4%) and additions and alterations (-3,2%) – see Table D.

**Figure 1 – Real value of recorded building plans passed by larger municipalities**

Constant 2015 prices



**Table E – Buildings reported as completed to larger municipalities at current prices:  
January to May 2016 versus January to May 2017**

Estimates at current prices	January to May 2016 1/	January to May 2017 1/	Difference in value between January to May 2016 and January to May 2017	% change between January to May 2016 and January to May 2017
	R'000	R'000	R'000	
<b>Residential buildings</b>	<b>12 783 246</b>	<b>15 650 743</b>	<b>2 867 497</b>	<b>22,4</b>
-Dwelling-houses	8 865 989	8 968 408	102 419	1,2
-Flats and townhouses	3 845 736	4 985 580	1 139 844	29,6
-Other residential buildings	71 521	1 696 755	1 625 234	2 272,4
<b>Non-residential buildings</b>	<b>7 351 903</b>	<b>6 881 768</b>	<b>-470 135</b>	<b>-6,4</b>
<b>Additions and alterations</b>	<b>4 135 229</b>	<b>4 323 397</b>	<b>188 168</b>	<b>4,6</b>
<b>Total</b>	<b>24 270 378</b>	<b>26 855 908</b>	<b>2 585 530</b>	<b>10,7</b>

1/ 2016 and 2017 figures should be regarded as preliminary because of possible backlogs and incomplete reporting by municipalities.

**Total value of buildings reported as completed at current prices**

The value of buildings reported as completed (at current prices) increased by 10,7% (R2 585,5 million) during January to May 2017 compared with January to May 2016.

Residential buildings rose by 22,4% (R2 867,5 million) – see Table E.

**Table F – Buildings reported as completed to larger municipalities aggregated to provincial level:  
January to May 2016 versus January to May 2017**

Estimates at current prices	January to May 2016 1/	January to May 2017 1/	% contribution to the total value of buildings completed during January to May 2016	% change between January to May 2016 and January to May 2017	Contribution (% points) to the % change in the value of buildings completed between January to May 2016 and January to May 2017 2/	Difference in value between January to May 2016 and January to May 2017
	R'000	R'000				R'000
Western Cape	6 121 624	7 395 764	25,2	20,8	5,2	1 274 140
Eastern Cape	533 898	712 309	2,2	33,4	0,7	178 411
Northern Cape	186 528	127 725	0,8	-31,5	-0,2	-58 803
Free State	740 736	362 871	3,1	-51,0	-1,6	-377 865
KwaZulu-Natal	4 569 849	4 324 303	18,8	-5,4	-1,0	-245 546
North West	1 125 962	612 232	4,6	-45,6	-2,1	-513 730
Gauteng	9 971 589	12 481 825	41,1	25,2	10,3	2 510 236
Mpumalanga	753 380	527 110	3,1	-30,0	-0,9	-226 270
Limpopo	266 812	311 769	1,1	16,8	0,2	44 957
<b>Total</b>	<b>24 270 378</b>	<b>26 855 908</b>	<b>100,0</b>	<b>10,7</b>	<b>10,7</b>	<b>2 585 530</b>

1/ 2016 and 2017 figures should be regarded as preliminary because of possible backlogs and incomplete reporting by municipalities.

2/ The contribution (percentage points) is calculated by multiplying the percentage change of each province between January to May 2016 and January to May 2017 by the percentage contribution of the corresponding province to the total value of buildings completed during January to May 2016, divided by 100.

Four provinces reported year-on-year increases in the value of buildings completed during January to May 2017. The largest contributions were recorded for Gauteng (contributing 10,3 percentage points or R2 510,2 million) and Western Cape (contributing 5,2 percentage points or R1 274,1 million) – see Table F.

**Table G – Buildings reported as completed to larger municipalities at constant 2015 prices: January to May 2016 versus January to May 2017**

Estimates at constant 2015 prices	January to May 2016 1/	January to May 2017 1/	Difference in value between January to May 2016 and January to May 2017	% change between January to May 2016 and January to May 2017
	R'000	R'000	R'000	
Residential buildings	12 228 019	14 080 827	1 852 808	15,2
Non-residential buildings	7 010 972	6 192 682	-818 290	-11,7
Additions and alterations	3 955 333	3 890 136	-65 197	-1,6
<b>Total</b>	<b>23 194 324</b>	<b>24 163 645</b>	<b>969 321</b>	<b>4,2</b>

1/ 2016 and 2017 figures should be regarded as preliminary because of possible backlogs and incomplete reporting by municipalities.

### Real value of buildings reported as completed

The real value of buildings reported as completed (at constant 2015 prices) increased by 4,2% (R969,3 million) year-on-year during January to May 2017. Residential buildings rose by 15,2% (R1 852,8 million) – see Table G.

**Table H – Seasonally adjusted three-monthly key figures regarding buildings reported as completed to larger municipalities at constant 2015 prices**

Seasonally adjusted estimates at constant 2015 prices	December 2016 to February 2017	March to May 2017	% change between December 2016 to February 2017 and March to May 2017
	R'000	R'000	
Residential buildings	9 748 373	9 559 403	-1,9
Non-residential buildings 1/	2 819 124	4 272 558	51,6
Additions and alterations	2 516 865	2 312 328	-8,1
<b>Total</b>	<b>15 084 362</b>	<b>16 144 287</b>	<b>7,0</b>

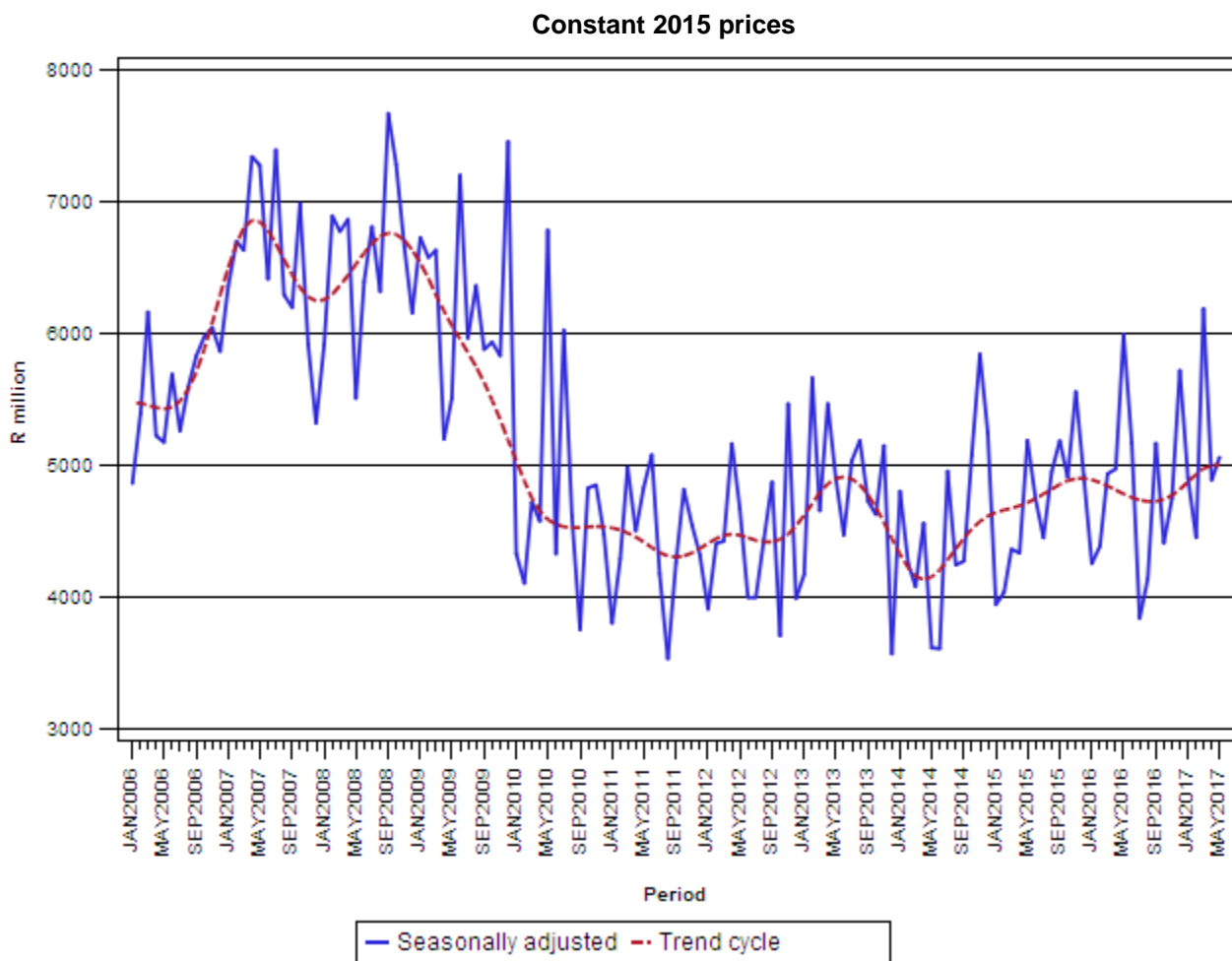
1/ Not seasonally adjusted because the presence of seasonality is not significant. See notes 10 and 11 on page 38.

### Seasonally adjusted real value of buildings reported as completed

The seasonally adjusted real value of buildings reported as completed increased by 7,0% in the three months ended May 2017 compared with the previous three months. Non-residential buildings rose by 51,6% – see Table H.



**Figure 2 – Real value of buildings reported as completed to larger municipalities**



**PJ Lehohla**  
**Statistician-General**

**Table 1 – Value and percentage change of recorded building plans passed by larger municipalities at current prices by type of building**

Year and month 2/		Residential buildings		Non-residential buildings		Additions and alterations		Total	
		R'000	% change 1/	R'000	% change 1/	R'000	% change 1/	R'000	% change 1/
2016	January	2 976 023	-12,8	3 244 246	372,0	1 451 533	-13,0	7 671 802	33,0
	February	4 592 411	20,1	2 310 260	76,3	2 125 304	-8,7	9 027 975	20,9
	March	4 600 728	8,1	2 515 020	17,0	2 056 047	-8,8	9 171 795	5,9
	April	5 484 971	29,6	2 804 955	44,6	2 388 049	20,6	10 677 975	31,0
	May	4 208 361	-0,2	2 167 660	-51,6	2 241 429	3,0	8 617 450	-20,7
	June	4 978 546	10,3	1 445 606	-63,9	2 415 528	9,1	8 839 680	-17,6
	July	3 762 166	-16,1	1 334 132	-35,8	2 532 825	-4,6	7 629 123	-17,2
	August	4 397 152	3,3	1 796 343	-7,2	2 291 169	-0,1	8 484 664	0,0
	September	4 802 689	2,1	2 513 194	66,5	2 707 391	20,4	10 023 274	18,5
	October	5 420 582	21,5	2 488 211	116,3	2 717 674	17,8	10 626 467	34,2
	November	4 827 911	10,5	2 823 103	100,5	2 458 564	15,0	10 109 578	27,7
	December	4 736 194	25,9	1 462 921	-27,1	1 954 313	-10,4	8 153 428	2,6
	<b>Total</b>	<b>54 787 734</b>	<b>8,5</b>	<b>26 905 651</b>	<b>9,1</b>	<b>27 339 826</b>	<b>3,4</b>	<b>109 033 211</b>	<b>7,3</b>
2017	January	3 161 447	6,2	1 731 491	-46,6	1 703 058	17,3	6 595 996	-14,0
	February	4 541 114	-1,1	2 214 493	-4,1	2 166 491	1,9	8 922 098	-1,2
	March	4 216 701	-8,3	1 656 336	-34,1	2 283 756	11,1	8 156 793	-11,1
	April	3 662 142	-33,2	961 614	-65,7	1 985 232	-16,9	6 608 988	-38,1
	May	4 622 961	9,9	2 019 554	-6,8	2 427 468	8,3	9 069 983	5,3

1/ The percentage change is the change in the value of recorded building plans passed by municipalities of the relevant year/month compared with the value of recorded building plans passed by municipalities of the comparable period of the previous year expressed as a percentage.

2/ Preliminary figures.

**Table 2 – Seasonally adjusted value and percentage change of recorded building plans passed by larger municipalities at current prices by type of building**

Year and month		Residential buildings		Non-residential buildings 3/		Additions and alterations		Total	
		R'000	% change 1/	R'000	% change 1/	R'000	% change 1/	R'000	% change 1/
2016	January	4 040 448	-10,5	3 244 246	61,7	2 086 474	-17,5	9 371 167	3,5
	February	4 698 438	16,3	2 310 260	-28,8	2 134 173	2,3	9 142 871	-2,4
	March	4 766 642	1,5	2 515 020	8,9	2 283 881	7,0	9 565 543	4,6
	April	5 435 643	14,0	2 804 955	11,5	2 341 972	2,5	10 582 569	10,6
	May	4 115 645	-24,3	2 167 660	-22,7	2 239 382	-4,4	8 522 687	-19,5
	June	4 385 121	6,5	1 445 606	-33,3	2 378 852	6,2	8 209 579	-3,7
	July	3 866 074	-11,8	1 334 132	-7,7	2 348 916	-1,3	7 549 121	-8,0
	August	4 040 265	4,5	1 796 343	34,6	2 015 137	-14,2	7 851 745	4,0
	September	4 416 455	9,3	2 513 194	39,9	2 305 078	14,4	9 234 727	17,6
	October	4 865 883	10,2	2 488 211	-1,0	2 586 930	12,2	9 941 024	7,6
	November	4 469 451	-8,1	2 823 103	13,5	2 221 484	-14,1	9 514 038	-4,3
	December	5 971 584	33,6	1 462 921	-48,2	2 390 550	7,6	9 825 055	3,3
2017	January	4 283 025	-28,3	1 731 491	18,4	2 329 204	-2,6	8 343 720	-15,1
	February	4 487 162	4,8	2 214 493	27,9	2 204 752	-5,3	8 906 407	6,7
	March	3 867 040	-13,8	1 656 336	-25,2	2 223 697	0,9	7 747 073	-13,0
	April	4 162 282	7,6	961 614	-41,9	2 294 608	3,2	7 418 504	-4,2
	May	4 396 073	5,6	2 019 554	110,0	2 332 631	1,7	8 748 258	17,9
	<b>Dec. 16 – Feb. 17</b>	<b>14 741 771</b>		<b>5 408 905</b>		<b>6 924 506</b>		<b>27 075 182</b>	
	<b>Mar. – May 17 2/</b>	<b>12 425 395</b>	<b>-15,7</b>	<b>4 637 504</b>	<b>-14,3</b>	<b>6 850 936</b>	<b>-1,1</b>	<b>23 913 835</b>	<b>-11,7</b>

1/ The percentage change is the change in the seasonally adjusted value of recorded building plans passed by municipalities of the relevant month compared with the seasonally adjusted value of recorded building plans passed by municipalities of the previous month expressed as a percentage.

2/ The percentage change is the change in the seasonally adjusted value of recorded building plans passed by municipalities for the latest three months compared with the seasonally adjusted value of recorded building plans passed by municipalities of the previous three months expressed as a percentage.

3/ Not seasonally adjusted because the presence of seasonality is not significant. See notes 10 and 11 on page 38.

**Table 3 – Value and percentage change of recorded building plans passed by larger municipalities at constant 2015 prices by type of building**

Year and month 2/		Residential buildings		Non-residential buildings		Additions and alterations		Total	
		R'000	% change 1/	R'000	% change 1/	R'000	% change 1/	R'000	% change 1/
2016	January	2 911 960	-15,8	3 174 409	355,4	1 420 287	-16,1	7 506 656	28,3
	February	4 403 079	13,3	2 215 014	66,3	2 037 684	-13,9	8 655 777	14,1
	March	4 398 402	2,3	2 404 417	10,7	1 965 628	-13,7	8 768 447	0,2
	April	5 203 957	22,6	2 661 248	36,8	2 265 701	14,1	10 130 906	23,9
	May	3 981 420	-5,7	2 050 766	-54,3	2 120 557	-2,6	8 152 743	-25,1
	June	4 661 560	3,6	1 353 564	-66,1	2 261 730	2,5	8 276 854	-22,6
	July	3 512 760	-21,2	1 245 688	-39,6	2 364 916	-10,3	7 123 364	-22,2
	August	4 101 821	-3,3	1 675 693	-13,2	2 137 285	-6,5	7 914 799	-6,4
	September	4 467 618	-4,8	2 337 855	55,1	2 518 503	12,2	9 323 976	10,4
	October	5 028 369	13,7	2 308 173	102,5	2 521 033	10,3	9 857 575	25,6
	November	4 441 500	2,7	2 597 151	86,3	2 261 788	6,8	9 300 439	18,7
	December	4 321 345	16,0	1 334 782	-32,8	1 783 132	-17,4	7 439 259	-5,5
	<b>Total</b>	<b>51 433 791</b>	<b>1,9</b>	<b>25 358 760</b>	<b>2,9</b>	<b>25 658 244</b>	<b>-2,9</b>	<b>102 450 795</b>	<b>0,9</b>
2017	January	2 874 043	-1,3	1 574 083	-50,4	1 548 235	9,0	5 996 361	-20,1
	February	4 098 478	-6,9	1 998 640	-9,8	1 955 317	-4,0	8 052 435	-7,0
	March	3 795 410	-13,7	1 490 851	-38,0	2 055 586	4,6	7 341 847	-16,3
	April	3 290 334	-36,8	863 984	-67,5	1 783 677	-21,3	5 937 995	-41,4
	May	4 116 617	3,4	1 798 356	-12,3	2 161 592	1,9	8 076 565	-0,9

1/ The percentage change is the change in the value of recorded building plans passed by municipalities of the relevant year/month compared with the value of recorded building plans passed by municipalities of the comparable period of the previous year expressed as a percentage.

2/ Preliminary figures.

**Table 4 – Seasonally adjusted value and percentage change of recorded building plans passed by larger municipalities at constant 2015 prices by type of building**

Year and month		Residential buildings		Non-residential buildings 3/		Additions and alterations		Total	
		R'000	% change 1/	R'000	% change 1/	R'000	% change 1/	R'000	% change 1/
2016	January	3 937 623	-11,2	3 174 409	59,8	2 031 937	-19,5	9 143 969	2,3
	February	4 503 821	14,4	2 215 014	-30,2	2 045 804	0,7	8 764 639	-4,1
	March	4 562 478	1,3	2 404 417	8,6	2 096 315	2,5	9 063 210	3,4
	April	5 175 907	13,4	2 661 248	10,7	2 222 793	6,0	10 059 948	11,0
	May	3 897 968	-24,7	2 050 766	-22,9	2 125 897	-4,4	8 074 631	-19,7
	June	4 119 596	5,7	1 353 564	-34,0	2 267 054	6,6	7 740 213	-4,1
	July	3 637 485	-11,7	1 245 688	-8,0	2 201 912	-2,9	7 085 084	-8,5
	August	3 770 502	3,7	1 675 693	34,5	1 865 351	-15,3	7 311 546	3,2
	September	4 103 078	8,8	2 337 855	39,5	2 166 093	16,1	8 607 027	17,7
	October	4 501 507	9,7	2 308 173	-1,3	2 401 982	10,9	9 211 662	7,0
	November	4 101 369	-8,9	2 597 151	12,5	2 048 902	-14,7	8 747 422	-5,0
	December	5 397 188	31,6	1 334 782	-48,6	2 188 683	6,8	8 920 652	2,0
2017	January	3 875 703	-28,2	1 574 083	17,9	2 105 996	-3,8	7 555 783	-15,3
	February	4 055 387	4,6	1 998 640	27,0	1 988 221	-5,6	8 042 248	6,4
	March	3 488 114	-14,0	1 490 851	-25,4	1 985 998	-0,1	6 964 963	-13,4
	April	3 742 391	7,3	863 984	-42,0	2 031 949	2,3	6 638 324	-4,7
	May	3 922 214	4,8	1 798 356	108,1	2 065 998	1,7	7 786 567	17,3
	<b>Dec. 16 – Feb. 17</b>	<b>13 328 278</b>		<b>4 907 505</b>		<b>6 282 900</b>		<b>24 518 683</b>	
	<b>Mar. – May 17 2/</b>	<b>11 152 719</b>	<b>-16,3</b>	<b>4 153 191</b>	<b>-15,4</b>	<b>6 083 945</b>	<b>-3,2</b>	<b>21 389 854</b>	<b>-12,8</b>

1/ The percentage change is the change in the seasonally adjusted value of recorded building plans passed by municipalities of the relevant month compared with the seasonally adjusted value of recorded building plans passed by municipalities of the previous month expressed as a percentage.

2/ The percentage change is the change in the seasonally adjusted value of recorded building plans passed by municipalities for the latest three months compared with the seasonally adjusted value of recorded building plans passed by municipalities of the previous three months expressed as a percentage.

3/ Not seasonally adjusted because the presence of seasonality is not significant. See notes 10 and 11 on page 38.

**Table 5 – Value and percentage change of buildings reported as completed to larger municipalities at current prices by type of building**

Year and month 2/		Residential buildings		Non-residential buildings		Additions and alterations		Total	
		R'000	% change 1/	R'000	% change 1/	R'000	% change 1/	R'000	% change 1/
2016	January	2 208 305	21,4	578 503	-26,4	651 330	29,8	3 438 138	10,7
	February	2 459 034	17,8	1 029 861	1,0	869 860	28,7	4 358 755	15,2
	March	2 523 781	-1,7	1 810 745	110,9	878 230	-14,4	5 212 756	17,1
	April	2 316 846	-11,2	2 113 528	189,3	822 389	-8,9	5 252 763	23,8
	May	3 275 280	5,0	1 819 266	87,9	913 420	14,6	6 007 966	23,0
	June	3 105 362	19,4	1 325 164	25,4	930 103	-5,5	5 360 629	15,5
	July	2 339 251	-11,2	1 150 587	5,0	705 601	-17,2	4 195 439	-8,5
	August	2 511 205	-11,3	1 205 852	-15,1	791 833	-2,8	4 508 890	-11,0
	September	3 647 566	21,5	1 326 114	-19,5	983 917	16,6	5 957 597	8,5
	October	3 050 481	13,5	928 259	-45,2	1 022 162	33,4	5 000 902	-2,9
	November	3 026 831	-11,9	1 682 124	-14,7	1 040 884	19,4	5 749 839	-8,4
	December	4 515 140	61,4	985 304	-32,0	873 119	14,2	6 373 563	27,2
	<b>Total</b>	<b>34 979 082</b>	<b>8,7</b>	<b>15 955 307</b>	<b>8,6</b>	<b>10 482 848</b>	<b>7,0</b>	<b>61 417 237</b>	<b>8,3</b>
2017	January	2 359 273	6,8	1 324 149	128,9	755 314	16,0	4 438 736	29,1
	February	2 992 499	21,7	793 718	-22,9	841 521	-3,3	4 627 738	6,2
	March	3 588 297	42,2	2 469 283	36,4	1 097 139	24,9	7 154 719	37,3
	April	3 720 449	60,6	835 924	-60,4	689 072	-16,2	5 245 445	-0,1
	May	2 990 225	-8,7	1 458 694	-19,8	940 351	2,9	5 389 270	-10,3

1/ The percentage change is the change in the value of buildings reported as completed to municipalities of the relevant year/month compared with the value of buildings reported as completed to municipalities of the comparable period of the previous year expressed as a percentage.

2/ Preliminary figures.

**Table 6 – Seasonally adjusted value and percentage change of buildings reported as completed to larger municipalities at current prices by type of building**

Year and month		Residential buildings		Non-residential buildings 3/		Additions and alterations		Total	
		R'000	% change 1/	R'000	% change 1/	R'000	% change 1/	R'000	% change 1/
2016	January	2 955 888	11,4	578 503	-60,1	826 690	-7,9	4 361 081	-12,8
	February	2 713 409	-8,2	1 029 861	78,0	830 660	0,5	4 573 931	4,9
	March	2 503 348	-7,7	1 810 745	75,8	844 597	1,7	5 158 690	12,8
	April	2 375 633	-5,1	2 113 528	16,7	752 151	-10,9	5 241 312	1,6
	May	3 596 383	51,4	1 819 266	-13,9	915 120	21,7	6 330 768	20,8
	June	3 281 135	-8,8	1 325 164	-27,2	915 417	0,0	5 521 716	-12,8
	July	2 239 830	-31,7	1 150 587	-13,2	709 690	-22,5	4 100 107	-25,7
	August	2 455 961	9,6	1 205 852	4,8	768 565	8,3	4 430 378	8,1
	September	3 289 517	33,9	1 326 114	10,0	945 694	23,0	5 561 325	25,5
	October	2 860 773	-13,0	928 259	-30,0	972 751	2,9	4 761 783	-14,4
	November	2 491 856	-12,9	1 682 124	81,2	1 002 187	3,0	5 176 167	8,7
	December	4 308 172	72,9	985 304	-41,4	1 014 699	1,2	6 308 175	21,9
2017	January	3 132 816	-27,3	1 324 149	34,4	951 619	-6,2	5 408 584	-14,3
	February	3 322 262	6,0	793 718	-40,1	812 374	-14,6	4 928 354	-8,9
	March	3 582 971	7,8	2 469 283	211,1	814 967	0,3	6 867 221	39,3
	April	3 778 625	5,5	835 924	-66,1	831 594	2,0	5 446 143	-20,7
	May	3 286 377	-13,0	1 458 694	74,5	929 617	11,8	5 674 688	4,2
	<b>Dec. 16 – Feb. 17</b>	<b>10 763 250</b>		<b>3 103 171</b>		<b>2 778 692</b>		<b>16 645 113</b>	
	<b>Mar. – May 17 2/</b>	<b>10 647 973</b>	<b>-1,1</b>	<b>4 763 901</b>	<b>53,5</b>	<b>2 576 178</b>	<b>-7,3</b>	<b>17 988 052</b>	<b>8,1</b>

1/ The percentage change is the change in the seasonally adjusted value of buildings reported as completed to municipalities of the relevant month compared with the seasonally adjusted value of buildings reported as completed to municipalities of the previous month expressed as a percentage.

2/ The percentage change is the change in the seasonally adjusted value of buildings reported as completed to municipalities for the latest three months compared with the seasonally adjusted value of buildings reported as completed to municipalities of the previous three months expressed as a percentage.

3/ Not seasonally adjusted because the presence of seasonality is not significant. See notes 10 and 11 on page 38.

**Table 7 – Value and percentage change of buildings reported as completed to larger municipalities at constant 2015 prices by type of building**

Year and month 2/		Residential buildings		Non-residential buildings		Additions and alterations		Total	
		R'000	% change 1/	R'000	% change 1/	R'000	% change 1/	R'000	% change 1/
2016	January	2 160 768	17,1	566 050	-29,0	637 309	25,3	3 364 127	6,8
	February	2 357 655	11,1	987 403	-4,7	833 998	21,4	4 179 056	8,7
	March	2 412 793	-7,0	1 731 114	99,6	839 608	-19,0	4 983 515	10,8
	April	2 198 146	-16,0	2 005 245	173,6	780 255	-13,9	4 983 646	17,1
	May	3 098 657	-0,8	1 721 160	77,6	864 163	8,3	5 683 980	16,2
	June	2 907 642	12,2	1 240 790	17,7	870 883	-11,2	5 019 315	8,5
	July	2 184 175	-16,5	1 074 311	-1,3	658 824	-22,2	3 917 310	-13,9
	August	2 342 542	-17,0	1 124 862	-20,6	738 650	-9,0	4 206 054	-16,7
	September	3 393 085	13,3	1 233 594	-24,9	915 272	8,7	5 541 951	1,1
	October	2 829 760	6,2	861 094	-48,7	948 202	24,9	4 639 056	-9,1
	November	2 784 573	-18,2	1 547 492	-20,7	957 575	11,0	5 289 640	-14,9
	December	4 119 653	48,8	899 000	-37,3	796 641	5,2	5 815 294	17,2
	<b>Total</b>	<b>32 789 449</b>	<b>1,9</b>	<b>14 992 115</b>	<b>2,2</b>	<b>9 841 380</b>	<b>0,5</b>	<b>57 622 944</b>	<b>1,8</b>
2017	January	2 144 794	-0,7	1 203 772	112,7	686 649	7,7	4 035 215	19,9
	February	2 700 811	14,6	716 352	-27,5	759 495	-8,9	4 176 658	-0,1
	March	3 229 790	33,9	2 222 577	28,4	987 524	17,6	6 439 891	29,2
	April	3 342 721	52,1	751 055	-62,5	619 112	-20,7	4 712 888	-5,4
	May	2 662 711	-14,1	1 298 926	-24,5	837 356	-3,1	4 798 993	-15,6

1/ The percentage change is the change in the value of buildings reported as completed to municipalities of the relevant year/month compared with the value of buildings reported as completed to municipalities of the comparable period of the previous year expressed as a percentage.

2/ Preliminary figures.



**Table 8 – Seasonally adjusted value and percentage change of buildings reported as completed to larger municipalities at constant 2015 prices by type of building**

Year and month		Residential buildings		Non-residential buildings 3/		Additions and alterations		Total	
		R'000	% change 1/	R'000	% change 1/	R'000	% change 1/	R'000	% change 1/
2016	January	2 886 165	10,6	566 050	-60,5	804 466	-8,9	4 256 680	-13,6
	February	2 604 609	-9,8	987 403	74,4	798 492	-0,7	4 390 504	3,1
	March	2 400 550	-7,8	1 731 114	75,3	806 358	1,0	4 938 023	12,5
	April	2 252 976	-6,1	2 005 245	15,8	716 969	-11,1	4 975 190	0,8
	May	3 410 038	51,4	1 721 160	-14,2	867 357	21,0	5 998 555	20,6
	June	3 072 525	-9,9	1 240 790	-27,9	860 747	-0,8	5 174 062	-13,7
	July	2 101 857	-31,6	1 074 311	-13,4	665 286	-22,7	3 841 454	-25,8
	August	2 299 498	9,4	1 124 862	4,7	717 442	7,8	4 141 802	7,8
	September	3 058 434	33,0	1 233 594	9,7	878 643	22,5	5 170 672	24,8
	October	2 651 062	-13,3	861 094	-30,2	900 586	2,5	4 412 741	-14,7
	November	2 284 692	-13,8	1 547 492	79,7	917 948	1,9	4 750 132	7,6
	December	3 903 573	70,9	899 000	-41,9	920 674	0,3	5 723 247	20,5
2017	January	2 842 401	-27,2	1 203 772	33,9	860 554	-6,5	4 906 727	-14,3
	February	3 002 399	5,6	716 352	-40,5	735 637	-14,5	4 454 388	-9,2
	March	3 233 865	7,7	2 222 577	210,3	735 439	0,0	6 191 880	39,0
	April	3 391 576	4,9	751 055	-66,2	747 388	1,6	4 890 018	-21,0
	May	2 933 962	-13,5	1 298 926	72,9	829 501	11,0	5 062 389	3,5
	<b>Dec. 16 – Feb. 17</b>	<b>9 748 373</b>		<b>2 819 124</b>		<b>2 516 865</b>		<b>15 084 362</b>	
	<b>Mar. – May 17 2/</b>	<b>9 559 403</b>	<b>-1,9</b>	<b>4 272 558</b>	<b>51,6</b>	<b>2 312 328</b>	<b>-8,1</b>	<b>16 144 287</b>	<b>7,0</b>

1/ The percentage change is the change in the seasonally adjusted value of buildings reported as completed to municipalities of the relevant month compared with the seasonally adjusted value of buildings reported as completed to municipalities of the previous month expressed as a percentage.

2/ The percentage change is the change in the seasonally adjusted value of buildings reported as completed to municipalities for the latest three months compared with the seasonally adjusted value of buildings reported as completed to municipalities of the previous three months expressed as a percentage.

3/ Not seasonally adjusted because the presence of seasonality is not significant. See notes 10 and 11 on page 38.

**Table 9 – Recorded building plans passed by larger municipalities at current prices by type of building: South Africa**

			May 2016	Apr. 2017	May 2017	Jan. - May 2016	Jan. - May 2017	% change 1/
Category of building	Type of building	Measuring unit						
<b>Residential buildings</b>	Dwelling-houses < 80 square metres	Number	2 273	1 224	1 805	7 995	7 040	-11,9
		square metres	106 376	61 068	85 755	381 450	337 278	-11,6
		R'000	451 452	345 883	439 961	1 721 284	1 778 483	3,3
	Dwelling-houses >= 80 square metres	Number	1 350	1 145	1 300	6 608	5 818	-12,0
		square metres	362 479	326 018	352 877	1 769 237	1 583 730	-10,5
		R'000	2 372 665	2 206 732	2 433 254	11 736 067	10 776 184	-8,2
	Flats and townhouses	Number	1 678	859	2 073	8 313	8 640	3,9
		square metres	167 837	133 211	230 991	857 095	981 602	14,5
		R'000	1 260 286	1 051 501	1 715 366	6 609 661	7 505 716	13,6
	Other residential buildings 2/	square metres	12 653	9 884	5 082	181 417	23 975	-86,8
		R'000	123 958	58 026	34 380	1 795 482	143 982	-92,0
<b>Total residential buildings</b>	<b>R'000</b>	<b>4 208 361</b>	<b>3 662 142</b>	<b>4 622 961</b>	<b>21 862 494</b>	<b>20 204 365</b>	<b>-7,6</b>	
<b>Non-residential buildings</b>	Office and banking space	square metres	38 518	29 911	44 326	260 225	201 164	-22,7
		R'000	336 681	241 532	416 820	2 233 560	1 821 411	-18,5
	Shopping space	square metres	103 859	19 984	80 545	669 367	236 127	-64,7
		R'000	904 689	104 706	657 948	5 664 687	1 947 801	-65,6
	Industrial and warehouse space	square metres	125 892	103 888	108 538	631 157	666 635	5,6
		R'000	701 598	553 942	767 264	3 444 711	3 920 407	13,8
	Other non-residential buildings 3/	square metres	36 973	10 550	26 466	251 220	130 715	-48,0
		R'000	224 692	61 434	177 522	1 699 183	893 869	-47,4
	<b>Total non-residential buildings</b>	<b>R'000</b>	<b>2 167 660</b>	<b>961 614</b>	<b>2 019 554</b>	<b>13 042 141</b>	<b>8 583 488</b>	<b>-34,2</b>
	<b>Additions and alterations</b>	Dwelling-houses	square metres	254 238	225 297	268 595	1 184 733	1 141 376
R'000			1 613 009	1 536 047	1 880 852	7 660 428	7 842 290	2,4
Other buildings 4/		square metres	73 671	49 940	56 667	281 125	290 648	3,4
		R'000	628 420	449 185	546 616	2 601 934	2 723 715	4,7
<b>Total additions and alterations</b>	<b>R'000</b>	<b>2 241 429</b>	<b>1 985 232</b>	<b>2 427 468</b>	<b>10 262 362</b>	<b>10 566 005</b>	<b>3,0</b>	
<b>Recorded plans passed</b>	<b>Total at current prices</b>	<b>R'000</b>	<b>8 617 450</b>	<b>6 608 988</b>	<b>9 069 983</b>	<b>45 166 997</b>	<b>39 353 858</b>	<b>-12,9</b>

1/ The percentage change between cumulative figures for 2016 and 2017.

2/ Other residential buildings include institutions for the disabled, boarding houses, hostels and tourism accommodation e.g. hotels, motels, guest-houses, holiday chalets, bed-and-breakfast accommodation and casinos.

3/ Other non-residential space includes churches, sport and recreation clubs, schools, crèches, hospitals and all other non-residential space.

4/ Other buildings include other residential buildings, non-residential buildings and internal alterations. No square metres are collected for internal alterations.

**Table 10 – Recorded building plans passed by larger municipalities at current prices by type of building: Western Cape**

			May 2016	Apr. 2017	May 2017	Jan. - May 2016	Jan. - May 2017	% change 1/
Category of building	Type of building	Measuring unit						
<b>Residential buildings</b>	Dwelling-houses < 80 square metres	Number	1 059	529	866	3 262	3 043	-6,7
		square metres	46 191	25 554	40 110	146 953	142 253	-3,2
		R'000	242 822	155 143	245 854	801 925	863 149	7,6
	Dwelling-houses >= 80 square metres	Number	405	363	438	1 856	1 971	6,2
		square metres	100 115	88 129	106 337	459 694	464 610	1,1
		R'000	661 280	577 028	708 468	3 023 874	3 082 300	1,9
	Flats and townhouses	Number	353	251	277	1 911	3 111	62,8
		square metres	51 861	37 679	46 078	225 182	329 110	46,2
		R'000	394 051	293 176	347 505	1 691 233	2 489 874	47,2
	Other residential buildings 2/	square metres	492	328	3 262	30 643	6 964	-77,3
		R'000	3 375	1 866	22 426	249 381	45 573	-81,7
	<b>Total residential buildings</b>	<b>R'000</b>	<b>1 301 528</b>	<b>1 027 213</b>	<b>1 324 253</b>	<b>5 766 413</b>	<b>6 480 896</b>	<b>12,4</b>
<b>Non-residential buildings</b>	Office and banking space	square metres	6 536	1 099	8 572	28 205	62 904	123,0
		R'000	61 723	9 137	83 090	238 039	549 190	130,7
	Shopping space	square metres	308	512	23 105	110 188	42 831	-61,1
		R'000	1 531	3 840	179 764	901 656	340 763	-62,2
	Industrial and warehouse space	square metres	7 396	12 485	49 776	136 156	116 721	-14,3
		R'000	48 785	81 767	376 475	922 238	822 208	-10,8
	Other non-residential buildings 3/	square metres	6 233	3 692	14 092	60 539	28 372	-53,1
		R'000	30 767	23 049	98 749	423 457	186 834	-55,9
	<b>Total non-residential buildings</b>	<b>R'000</b>	<b>142 806</b>	<b>117 793</b>	<b>738 078</b>	<b>2 485 390</b>	<b>1 898 995</b>	<b>-23,6</b>
	<b>Additions and alterations</b>	Dwelling-houses	square metres	83 099	59 833	69 727	330 913	317 099
R'000			521 731	378 297	456 096	2 090 335	2 059 293	-1,5
Other buildings 4/		square metres	30 927	13 720	19 197	75 837	82 388	8,6
		R'000	267 916	141 232	231 101	847 543	901 741	6,4
<b>Total additions and alterations</b>	<b>R'000</b>	<b>789 647</b>	<b>519 529</b>	<b>687 197</b>	<b>2 937 878</b>	<b>2 961 034</b>	<b>0,8</b>	
<b>Recorded plans passed</b>	<b>Total at current prices</b>	<b>R'000</b>	<b>2 233 981</b>	<b>1 664 535</b>	<b>2 749 528</b>	<b>11 189 681</b>	<b>11 340 925</b>	<b>1,4</b>

1/ The percentage change between cumulative figures for 2016 and 2017.

2/ Other residential buildings include institutions for the disabled, boarding houses, hostels and tourism accommodation e.g. hotels, motels, guest-houses, holiday chalets, bed-and-breakfast accommodation and casinos.

3/ Other non-residential space includes churches, sport and recreation clubs, schools, crèches, hospitals and all other non-residential space.

4/ Other buildings include other residential buildings, non-residential buildings and internal alterations. No square metres are collected for internal alterations.

**Table 11 – Recorded building plans passed by larger municipalities at current prices by type of building: Eastern Cape**

			May 2016	Apr. 2017	May 2017	Jan. - May 2016	Jan. - May 2017	% change 1/
Category of building	Type of building	Measuring unit						
Residential buildings	Dwelling-houses < 80 square metres	Number	161	207	29	406	1 044	157,1
		square metres	7 286	9 192	1 637	19 909	46 702	134,6
		R'000	25 645	51 985	8 062	88 326	220 465	149,6
	Dwelling-houses >= 80 square metres	Number	128	57	95	423	370	-12,5
		square metres	25 633	11 400	19 995	90 479	81 405	-10,0
		R'000	136 251	61 393	120 231	527 868	473 207	-10,4
	Flats and townhouses	Number	410	1	22	516	171	-66,9
		square metres	21 514	215	2 592	32 334	15 314	-52,6
		R'000	119 780	1 184	14 952	176 737	83 609	-52,7
	Other residential buildings 2/	square metres	0	4 384	0	148	6 066	3 998,6
		R'000	0	29 282	0	962	36 010	3 643,2
<b>Total residential buildings</b>	<b>R'000</b>	<b>281 676</b>	<b>143 844</b>	<b>143 245</b>	<b>793 893</b>	<b>813 291</b>	<b>2,4</b>	
Non-residential buildings	Office and banking space	square metres	0	7 097	790	544	8 040	1 377,9
		R'000	0	37 859	5 320	2 501	43 989	1 658,9
	Shopping space	square metres	244	4 035	4 349	1 936	10 978	467,0
		R'000	1 507	21 373	21 745	9 033	56 365	524,0
	Industrial and warehouse space	square metres	16 172	2 161	2 249	55 258	55 134	-0,2
		R'000	75 900	11 886	13 592	259 495	305 569	17,8
	Other non-residential buildings 3/	square metres	3 872	33	2 321	11 119	5 359	-51,8
		R'000	17 335	164	11 515	47 164	28 285	-40,0
	<b>Total non-residential buildings</b>	<b>R'000</b>	<b>94 742</b>	<b>71 282</b>	<b>52 172</b>	<b>318 193</b>	<b>434 208</b>	<b>36,5</b>
	Additions and alterations	Dwelling-houses	square metres	23 916	15 719	26 216	95 802	109 658
R'000			107 137	93 003	164 328	500 880	668 867	33,5
Other buildings 4/		square metres	4 444	1 182	6 156	22 336	24 206	8,4
		R'000	20 382	6 523	36 665	96 649	143 632	48,6
<b>Total additions and alterations</b>	<b>R'000</b>	<b>127 519</b>	<b>99 526</b>	<b>200 993</b>	<b>597 529</b>	<b>812 499</b>	<b>36,0</b>	
<b>Recorded plans passed</b>	<b>Total at current prices</b>	<b>R'000</b>	<b>503 937</b>	<b>314 652</b>	<b>396 410</b>	<b>1 709 615</b>	<b>2 059 998</b>	<b>20,5</b>

1/ The percentage change between cumulative figures for 2016 and 2017.

2/ Other residential buildings include institutions for the disabled, boarding houses, hostels and tourism accommodation e.g. hotels, motels, guest-houses, holiday chalets, bed-and-breakfast accommodation and casinos.

3/ Other non-residential space includes churches, sport and recreation clubs, schools, crèches, hospitals and all other non-residential space.

4/ Other buildings include other residential buildings, non-residential buildings and internal alterations. No square metres are collected for internal alterations.

**Table 12 – Recorded building plans passed by larger municipalities at current prices by type of building: Northern Cape**

			May 2016	Apr. 2017	May 2017	Jan. - May 2016	Jan. - May 2017	% change 1/
Category of building	Type of building	Measuring unit						
<b>Residential buildings</b>	Dwelling-houses < 80 square metres	Number	3	3	8	11	16	45,5
		square metres	225	200	484	805	937	16,4
		R'000	1 350	1 200	2 370	4 830	5 008	3,7
	Dwelling-houses >= 80 square metres	Number	15	6	14	79	64	-19,0
		square metres	3 687	1 206	5 903	15 448	13 599	-12,0
		R'000	24 235	7 288	43 342	98 765	92 969	-5,9
	Flats and townhouses	Number	0	0	0	50	0	..
		square metres	0	0	0	5 781	0	..
		R'000	0	0	0	35 135	0	..
	Other residential buildings 2/	square metres	0	0	0	0	390	..
		R'000	0	0	0	0	2 535	..
	<b>Total residential buildings</b>	<b>R'000</b>	<b>25 585</b>	<b>8 488</b>	<b>45 712</b>	<b>138 730</b>	<b>100 512</b>	<b>-27,5</b>
<b>Non-residential buildings</b>	Office and banking space	square metres	360	0	0	9 203	0	..
		R'000	2 160	0	0	55 150	0	..
	Shopping space	square metres	0	0	0	1 498	0	..
		R'000	0	0	0	7 146	0	..
	Industrial and warehouse space	square metres	231	0	4 858	6 003	7 063	17,7
		R'000	1 040	0	36 921	35 760	51 254	43,3
	Other non-residential buildings 3/	square metres	0	0	0	943	658	-30,2
		R'000	0	0	0	5 308	4 278	-19,4
	<b>Total non-residential buildings</b>	<b>R'000</b>	<b>3 200</b>	<b>0</b>	<b>36 921</b>	<b>103 364</b>	<b>55 532</b>	<b>-46,3</b>
	<b>Additions and alterations</b>	Dwelling-houses	square metres	3 852	1 659	7 428	20 164	13 967
R'000			28 776	10 231	52 861	138 983	95 845	-31,0
Other buildings 4/		square metres	1 008	72	70	2 187	523	-76,1
		R'000	6 259	848	635	19 733	4 420	-77,6
<b>Total additions and alterations</b>	<b>R'000</b>	<b>35 035</b>	<b>11 079</b>	<b>53 496</b>	<b>158 716</b>	<b>100 265</b>	<b>-36,8</b>	
<b>Recorded plans passed</b>	<b>Total at current prices</b>	<b>R'000</b>	<b>63 820</b>	<b>19 567</b>	<b>136 129</b>	<b>400 810</b>	<b>256 309</b>	<b>-36,1</b>

1/ The percentage change between cumulative figures for 2016 and 2017.

2/ Other residential buildings include institutions for the disabled, boarding houses, hostels and tourism accommodation e.g. hotels, motels, guest-houses, holiday chalets, bed-and-breakfast accommodation and casinos.

3/ Other non-residential space includes churches, sport and recreation clubs, schools, crèches, hospitals and all other non-residential space.

4/ Other buildings include other residential buildings, non-residential buildings and internal alterations. No square metres are collected for internal alterations.

**Table 13 – Recorded building plans passed by larger municipalities at current prices by type of building: Free State**

			May 2016	Apr. 2017	May 2017	Jan. - May 2016	Jan. - May 2017	% change 1/
Category of building	Type of building	Measuring unit						
Residential buildings	Dwelling-houses < 80 square metres	Number	309	3	8	438	53	-87,9
		square metres	15 933	201	468	23 259	2 984	-87,2
		R'000	35 148	1 166	2 577	69 062	16 913	-75,5
	Dwelling-houses >= 80 square metres	Number	54	69	52	310	289	-6,8
		square metres	13 706	14 770	9 093	74 251	59 050	-20,5
		R'000	76 116	82 387	48 164	399 838	321 679	-19,5
	Flats and townhouses	Number	26	35	5	255	341	33,7
		square metres	2 829	5 060	396	32 632	47 774	46,4
		R'000	17 073	35 420	2 533	216 978	327 502	50,9
	Other residential buildings 2/	square metres	0	599	117	3 851	1 215	-68,4
		R'000	0	3 242	702	26 357	6 390	-75,8
<b>Total residential buildings</b>	<b>R'000</b>	<b>128 337</b>	<b>122 215</b>	<b>53 976</b>	<b>712 235</b>	<b>672 484</b>	<b>-5,6</b>	
Non-residential buildings	Office and banking space	square metres	0	156	0	12 831	343	-97,3
		R'000	0	1 248	0	101 704	2 744	-97,3
	Shopping space	square metres	0	487	260	4 125	5 893	42,9
		R'000	0	2 192	1 170	23 906	32 010	33,9
	Industrial and warehouse space	square metres	4 759	3 651	911	23 454	20 590	-12,2
		R'000	23 863	17 525	5 283	107 992	99 403	-8,0
	Other non-residential buildings 3/	square metres	3 938	1 444	2 094	9 740	4 649	-52,3
		R'000	30 787	8 375	9 423	71 886	24 260	-66,3
	<b>Total non-residential buildings</b>	<b>R'000</b>	<b>54 650</b>	<b>29 340</b>	<b>15 876</b>	<b>305 488</b>	<b>158 417</b>	<b>-48,1</b>
	Additions and alterations	Dwelling-houses	square metres	7 395	15 621	9 672	58 070	58 634
R'000			39 605	83 442	48 281	301 285	308 042	2,2
Other buildings 4/		square metres	994	9 260	2 127	5 517	15 405	179,2
		R'000	8 235	64 681	11 678	93 820	170 245	81,5
<b>Total additions and alterations</b>	<b>R'000</b>	<b>47 840</b>	<b>148 123</b>	<b>59 959</b>	<b>395 105</b>	<b>478 287</b>	<b>21,1</b>	
<b>Recorded plans passed</b>	<b>Total at current prices</b>	<b>R'000</b>	<b>230 827</b>	<b>299 678</b>	<b>129 811</b>	<b>1 412 828</b>	<b>1 309 188</b>	<b>-7,3</b>

1/ The percentage change between cumulative figures for 2016 and 2017.

2/ Other residential buildings include institutions for the disabled, boarding houses, hostels and tourism accommodation e.g. hotels, motels, guest-houses, holiday chalets, bed-and-breakfast accommodation and casinos.

3/ Other non-residential space includes churches, sport and recreation clubs, schools, crèches, hospitals and all other non-residential space.

4/ Other buildings include other residential buildings, non-residential buildings and internal alterations. No square metres are collected for internal alterations.

**Table 14 – Recorded building plans passed by larger municipalities at current prices by type of building: KwaZulu-Natal**

			May 2016	Apr. 2017	May 2017	Jan. - May 2016	Jan. - May 2017	% change 1/
Category of building	Type of building	Measuring unit						
<b>Residential buildings</b>	Dwelling-houses < 80 square metres	Number	84	13	136	190	194	2,1
		square metres	3 682	781	5 741	9 606	9 224	-4,0
		R'000	20 943	6 307	30 333	63 992	55 835	-12,7
	Dwelling-houses >= 80 square metres	Number	110	82	112	580	525	-9,5
		square metres	28 848	22 004	38 088	178 967	159 095	-11,1
		R'000	236 320	202 948	369 239	1 528 945	1 477 169	-3,4
	Flats and townhouses	Number	83	168	100	1 146	914	-20,2
		square metres	14 233	35 808	13 403	127 432	137 289	7,7
		R'000	136 957	320 267	129 476	1 169 244	1 324 158	13,2
	Other residential buildings 2/	square metres	0	1 057	0	15 010	3 192	-78,7
		R'000	0	6 342	0	147 813	20 747	-86,0
	<b>Total residential buildings</b>	<b>R'000</b>	<b>394 220</b>	<b>535 864</b>	<b>529 048</b>	<b>2 909 994</b>	<b>2 877 909</b>	<b>-1,1</b>
<b>Non-residential buildings</b>	Office and banking space	square metres	15 317	12 116	30 336	83 392	52 546	-37,0
		R'000	150 756	127 218	301 253	805 581	508 588	-36,9
	Shopping space	square metres	62 819	1 940	35 951	316 364	102 320	-67,7
		R'000	646 903	11 640	333 688	3 029 040	997 431	-67,1
	Industrial and warehouse space	square metres	34 891	13 526	16 340	84 377	88 729	5,2
		R'000	204 487	77 098	128 067	458 702	558 346	21,7
	Other non-residential buildings 3/	square metres	6 349	449	3 204	53 707	23 103	-57,0
		R'000	35 775	3 143	21 164	357 992	170 627	-52,3
	<b>Total non-residential buildings</b>	<b>R'000</b>	<b>1 037 921</b>	<b>219 099</b>	<b>784 172</b>	<b>4 651 315</b>	<b>2 234 992</b>	<b>-51,9</b>
	<b>Additions and alterations</b>	Dwelling-houses	square metres	27 771	25 854	45 445	139 257	158 353
R'000			246 574	241 887	432 783	1 191 772	1 500 902	25,9
Other buildings 4/		square metres	18 269	11 090	16 841	89 477	76 480	-14,5
		R'000	158 694	118 722	173 953	829 467	830 489	0,1
<b>Total additions and alterations</b>	<b>R'000</b>	<b>405 268</b>	<b>360 609</b>	<b>606 736</b>	<b>2 021 239</b>	<b>2 331 391</b>	<b>15,3</b>	
<b>Recorded plans passed</b>	<b>Total at current prices</b>	<b>R'000</b>	<b>1 837 409</b>	<b>1 115 572</b>	<b>1 919 956</b>	<b>9 582 548</b>	<b>7 444 292</b>	<b>-22,3</b>

1/ The percentage change between cumulative figures for 2016 and 2017.

2/ Other residential buildings include institutions for the disabled, boarding houses, hostels and tourism accommodation e.g. hotels, motels, guest-houses, holiday chalets, bed-and-breakfast accommodation and casinos.

3/ Other non-residential space includes churches, sport and recreation clubs, schools, crèches, hospitals and all other non-residential space.

4/ Other buildings include other residential buildings, non-residential buildings and internal alterations. No square metres are collected for internal alterations.

**Table 15 – Recorded building plans passed by larger municipalities at current prices by type of building: North West**

			May 2016	Apr. 2017	May 2017	Jan. - May 2016	Jan. - May 2017	% change 1/
Category of building	Type of building	Measuring unit						
Residential buildings	Dwelling-houses < 80 square metres	Number	53	2	8	78	30	-61,5
		square metres	3 123	136	515	4 771	1 881	-60,6
		R'000	13 698	612	2 338	21 735	8 564	-60,6
	Dwelling-houses >= 80 square metres	Number	79	71	70	382	329	-13,9
		square metres	17 371	20 073	16 002	95 532	85 297	-10,7
		R'000	84 982	107 148	88 119	481 734	453 002	-6,0
	Flats and townhouses	Number	98	136	270	494	1 286	160,3
		square metres	4 049	11 156	33 555	43 585	140 263	221,8
		R'000	26 604	62 697	200 016	229 387	834 700	263,9
	Other residential buildings 2/	square metres	0	0	0	718	0	..
		R'000	0	0	0	5 026	0	..
<b>Total residential buildings</b>	<b>R'000</b>	<b>125 284</b>	<b>170 457</b>	<b>290 473</b>	<b>737 882</b>	<b>1 296 266</b>	<b>75,7</b>	
Non-residential buildings	Office and banking space	square metres	0	0	668	1 180	1 541	30,6
		R'000	0	0	4 342	5 900	9 949	68,6
	Shopping space	square metres	396	0	5 840	19 400	8 784	-54,7
		R'000	1 980	0	29 200	106 581	45 272	-57,5
	Industrial and warehouse space	square metres	897	2 592	1 441	9 592	6 729	-29,8
		R'000	3 828	13 735	6 485	50 304	31 315	-37,7
	Other non-residential buildings 3/	square metres	1 084	201	257	6 111	1 083	-82,3
		R'000	6 070	905	1 078	31 259	4 796	-84,7
	<b>Total non-residential buildings</b>	<b>R'000</b>	<b>11 878</b>	<b>14 640</b>	<b>41 105</b>	<b>194 044</b>	<b>91 332</b>	<b>-52,9</b>
	Additions and alterations	Dwelling-houses	square metres	14 967	7 874	13 340	59 977	50 057
R'000			68 563	43 016	64 932	279 231	247 682	-11,3
Other buildings 4/		square metres	534	1 272	1 240	7 740	6 935	-10,4
		R'000	5 224	6 920	8 584	52 147	46 928	-10,0
<b>Total additions and alterations</b>	<b>R'000</b>	<b>73 787</b>	<b>49 936</b>	<b>73 516</b>	<b>331 378</b>	<b>294 610</b>	<b>-11,1</b>	
<b>Recorded plans passed</b>	<b>Total at current prices</b>	<b>R'000</b>	<b>210 949</b>	<b>235 033</b>	<b>405 094</b>	<b>1 263 304</b>	<b>1 682 208</b>	<b>33,2</b>

1/ The percentage change between cumulative figures for 2016 and 2017.

2/ Other residential buildings include institutions for the disabled, boarding houses, hostels and tourism accommodation e.g. hotels, motels, guest-houses, holiday chalets, bed-and-breakfast accommodation and casinos.

3/ Other non-residential space includes churches, sport and recreation clubs, schools, crèches, hospitals and all other non-residential space.

4/ Other buildings include other residential buildings, non-residential buildings and internal alterations. No square metres are collected for internal alterations.



**Table 16 – Recorded building plans passed by larger municipalities at current prices by type of building: Gauteng**

			May 2016	Apr. 2017	May 2017	Jan. - May 2016	Jan. - May 2017	% change 1/
Category of building	Type of building	Measuring unit						
Residential buildings	Dwelling-houses < 80 square metres	Number	543	315	593	2 948	2 044	-30,7
		square metres	26 696	16 569	29 035	142 075	101 700	-28,4
		R'000	98 024	85 298	115 427	528 094	463 280	-12,3
	Dwelling-houses >= 80 square metres	Number	397	370	379	2 137	1 632	-23,6
		square metres	132 539	133 279	121 154	658 663	548 948	-16,7
		R'000	947 431	995 961	873 626	4 685 856	4 018 739	-14,2
	Flats and townhouses	Number	669	256	1 300	3 836	2 617	-31,8
		square metres	66 961	42 851	117 610	376 765	284 496	-24,5
		R'000	531 967	336 768	919 426	3 025 223	2 295 500	-24,1
	Other residential buildings 2/	square metres	10 859	2 943	1 703	124 929	4 646	-96,3
		R'000	113 813	14 715	11 252	1 337 273	25 967	-98,1
	<b>Total residential buildings</b>	<b>R'000</b>	<b>1 691 235</b>	<b>1 432 742</b>	<b>1 919 731</b>	<b>9 576 446</b>	<b>6 803 486</b>	<b>-29,0</b>
Non-residential buildings	Office and banking space	square metres	12 778	4 105	1 393	93 620	60 596	-35,3
		R'000	104 622	39 424	10 765	856 512	634 162	-26,0
	Shopping space	square metres	35 482	1 892	3 340	192 484	40 496	-79,0
		R'000	232 023	12 629	25 546	1 470 993	327 858	-77,7
	Industrial and warehouse space	square metres	51 901	66 432	28 500	275 508	354 029	28,5
		R'000	294 669	336 977	178 125	1 413 865	1 970 041	39,3
	Other non-residential buildings 3/	square metres	8 929	3 168	3 922	90 872	42 896	-52,8
		R'000	74 666	18 743	32 713	677 599	334 205	-50,7
	<b>Total non-residential buildings</b>	<b>R'000</b>	<b>705 980</b>	<b>407 773</b>	<b>247 149</b>	<b>4 418 969</b>	<b>3 266 266</b>	<b>-26,1</b>
	Additions and alterations	Dwelling-houses	square metres	71 974	87 018	81 178	387 776	362 268
R'000			492 137	634 584	584 101	2 715 393	2 625 224	-3,3
Other buildings 4/		square metres	13 699	12 547	8 538	66 137	76 842	16,2
		R'000	138 771	101 553	66 175	574 220	543 326	-5,4
<b>Total additions and alterations</b>	<b>R'000</b>	<b>630 908</b>	<b>736 137</b>	<b>650 276</b>	<b>3 289 613</b>	<b>3 168 550</b>	<b>-3,7</b>	
<b>Recorded plans passed</b>	<b>Total at current prices</b>	<b>R'000</b>	<b>3 028 123</b>	<b>2 576 652</b>	<b>2 817 156</b>	<b>17 285 028</b>	<b>13 238 302</b>	<b>-23,4</b>

1/ The percentage change between cumulative figures for 2016 and 2017.

2/ Other residential buildings include institutions for the disabled, boarding houses, hostels and tourism accommodation e.g. hotels, motels, guest-houses, holiday chalets, bed-and-breakfast accommodation and casinos.

3/ Other non-residential space includes churches, sport and recreation clubs, schools, crèches, hospitals and all other non-residential space.

4/ Other buildings include other residential buildings, non-residential buildings and internal alterations. No square metres are collected for internal alterations.

**Table 17 – Recorded building plans passed by larger municipalities at current prices by type of building: Mpumalanga**

			May 2016	Apr. 2017	May 2017	Jan. - May 2016	Jan. - May 2017	% change 1/
Category of building	Type of building	Measuring unit						
<b>Residential buildings</b>	Dwelling-houses < 80 square metres	Number	45	90	151	567	509	-10,2
		square metres	2 270	4 503	7 379	28 501	24 840	-12,8
		R'000	8 972	18 502	30 961	115 652	104 132	-10,0
	Dwelling-houses >= 80 square metres	Number	106	96	83	593	398	-32,9
		square metres	25 285	24 782	21 451	128 544	104 932	-18,4
		R'000	126 821	119 740	106 256	653 943	517 947	-20,8
	Flats and townhouses	Number	12	12	8	54	58	7,4
		square metres	619	442	682	5 235	4 635	-11,5
		R'000	2 835	1 989	3 069	23 607	20 992	-11,1
	Other residential buildings 2/	square metres	0	573	0	4 816	1 502	-68,8
		R'000	0	2 579	0	21 900	6 760	-69,1
	<b>Total residential buildings</b>	<b>R'000</b>	<b>138 628</b>	<b>142 810</b>	<b>140 286</b>	<b>815 102</b>	<b>649 831</b>	<b>-20,3</b>
<b>Non-residential buildings</b>	Office and banking space	square metres	638	109	1 571	27 265	4 594	-83,2
		R'000	2 935	501	7 070	148 975	20 788	-86,0
	Shopping space	square metres	4 610	5 254	7 700	20 891	17 847	-14,6
		R'000	20 745	23 643	66 835	103 923	112 920	8,7
	Industrial and warehouse space	square metres	3 932	627	2 834	29 355	9 713	-66,9
		R'000	20 461	2 884	14 171	140 525	44 307	-68,5
	Other non-residential buildings 3/	square metres	6 220	1 563	0	16 313	9 755	-40,2
		R'000	27 552	7 055	0	76 159	44 334	-41,8
	<b>Total non-residential buildings</b>	<b>R'000</b>	<b>71 693</b>	<b>34 083</b>	<b>88 076</b>	<b>469 582</b>	<b>222 349</b>	<b>-52,6</b>
	<b>Additions and alterations</b>	Dwelling-houses	square metres	13 940	9 053	9 118	66 522	46 584
R'000			72 762	38 387	45 376	314 337	214 178	-31,9
Other buildings 4/		square metres	3 595	42	2 398	7 398	5 548	-25,0
		R'000	19 914	4 609	14 355	61 372	61 981	1,0
<b>Total additions and alterations</b>	<b>R'000</b>	<b>92 676</b>	<b>42 996</b>	<b>59 731</b>	<b>375 709</b>	<b>276 159</b>	<b>-26,5</b>	
<b>Recorded plans passed</b>	<b>Total at current prices</b>	<b>R'000</b>	<b>302 997</b>	<b>219 889</b>	<b>288 093</b>	<b>1 660 393</b>	<b>1 148 339</b>	<b>-30,8</b>

1/ The percentage change between cumulative figures for 2016 and 2017.

2/ Other residential buildings include institutions for the disabled, boarding houses, hostels and tourism accommodation e.g. hotels, motels, guest-houses, holiday chalets, bed-and-breakfast accommodation and casinos.

3/ Other non-residential space includes churches, sport and recreation clubs, schools, crèches, hospitals and all other non-residential space.

4/ Other buildings include other residential buildings, non-residential buildings and internal alterations. No square metres are collected for internal alterations.

**Table 18 – Recorded building plans passed by larger municipalities at current prices by type of building: Limpopo**

			May 2016	Apr. 2017	May 2017	Jan. - May 2016	Jan. - May 2017	% change 1/	
Category of building	Type of building	Measuring unit							
<b>Residential buildings</b>	Dwelling-houses < 80 square metres	Number	16	62	6	95	107	12,6	
		square metres	970	3 932	386	5 571	6 757	21,3	
		R'000	4 850	25 670	2 039	27 668	41 137	48,7	
	Dwelling-houses >= 80 square metres	Number	56	31	57	248	240	-3,2	
		square metres	15 295	10 375	14 854	67 659	66 794	-1,3	
		R'000	79 229	52 839	75 809	335 244	339 172	1,2	
	Flats and townhouses	Number	27	0	91	51	142	178,4	
		square metres	5 771	0	16 675	8 149	22 721	178,8	
		R'000	31 019	0	98 389	42 117	129 381	207,2	
	Other residential buildings 2/	square metres	1 302	0	0	1 302	0	..	
		R'000	6 770	0	0	6 770	0	..	
	<b>Total residential buildings</b>		<b>R'000</b>	<b>121 868</b>	<b>78 509</b>	<b>176 237</b>	<b>411 799</b>	<b>509 690</b>	<b>23,8</b>
<b>Non-residential buildings</b>	Office and banking space	square metres	2 889	5 229	996	3 985	10 600	166,0	
		R'000	14 485	26 145	4 980	19 198	52 001	170,9	
	Shopping space	square metres	0	5 864	0	2 481	6 978	181,3	
		R'000	0	29 389	0	12 409	35 182	183,5	
	Industrial and warehouse space	square metres	5 713	2 414	1 629	11 454	7 927	-30,8	
		R'000	28 565	12 070	8 145	55 830	37 964	-32,0	
	Other non-residential buildings 3/	square metres	348	0	576	1 876	14 840	691,0	
		R'000	1 740	0	2 880	8 359	96 250	1 051,5	
	<b>Total non-residential buildings</b>		<b>R'000</b>	<b>44 790</b>	<b>67 604</b>	<b>16 005</b>	<b>95 796</b>	<b>221 397</b>	<b>131,1</b>
	<b>Additions and alterations</b>	Dwelling-houses	square metres	7 324	2 666	6 471	26 252	24 756	-5,7
R'000			35 724	13 200	32 094	128 212	122 257	-4,6	
Other buildings 4/		square metres	201	755	100	4 496	2 321	-48,4	
		R'000	3 025	4 097	3 470	26 983	20 953	-22,3	
<b>Total additions and alterations</b>		<b>R'000</b>	<b>38 749</b>	<b>17 297</b>	<b>35 564</b>	<b>155 195</b>	<b>143 210</b>	<b>-7,7</b>	
<b>Recorded plans passed</b>	<b>Total at current prices</b>		<b>R'000</b>	<b>205 407</b>	<b>163 410</b>	<b>227 806</b>	<b>662 790</b>	<b>874 297</b>	<b>31,9</b>

1/ The percentage change between cumulative figures for 2016 and 2017.

2/ Other residential buildings include institutions for the disabled, boarding houses, hostels and tourism accommodation e.g. hotels, motels, guest-houses, holiday chalets, bed-and-breakfast accommodation and casinos.

3/ Other non-residential space includes churches, sport and recreation clubs, schools, crèches, hospitals and all other non-residential space.

4/ Other buildings include other residential buildings, non-residential buildings and internal alterations. No square metres are collected for internal alterations.

**Table 19 – Buildings reported as completed to larger municipalities at current prices by type of building: South Africa**

			May 2016	Apr. 2017	May 2017	Jan. - May 2016	Jan. - May 2017	% change 1/
Category of building	Type of building	Measuring unit						
<b>Residential buildings</b>	Dwelling-houses < 80 square metres	Number	1 650	1 528	1 536	6 010	6 465	7,6
		square metres	81 601	72 372	72 732	290 270	307 916	6,1
		R'000	301 098	296 412	329 172	1 170 467	1 437 425	22,8
	Dwelling-houses >= 80 square metres	Number	1 259	708	914	4 981	3 862	-22,5
		square metres	284 595	188 946	247 561	1 185 869	1 064 495	-10,2
		R'000	1 836 143	1 298 072	1 759 473	7 695 522	7 530 983	-2,1
	Flats and townhouses	Number	1 287	1 066	915	5 387	6 538	21,4
		square metres	142 863	107 775	103 613	512 513	621 453	21,3
		R'000	1 133 534	865 630	835 269	3 845 736	4 985 580	29,6
	Other residential buildings 2/	square metres	1 001	113 841	9 473	12 056	169 161	1 303,1
		R'000	4 505	1 260 335	66 311	71 521	1 696 755	2 272,4
<b>Total residential buildings</b>	<b>R'000</b>	<b>3 275 280</b>	<b>3 720 449</b>	<b>2 990 225</b>	<b>12 783 246</b>	<b>15 650 743</b>	<b>22,4</b>	
<b>Non-residential buildings</b>	Office and banking space	square metres	40 684	25 415	50 244	256 958	277 689	8,1
		R'000	335 204	246 018	456 201	2 023 257	2 524 567	24,8
	Shopping space	square metres	54 893	30 870	32 637	249 963	217 167	-13,1
		R'000	477 336	188 480	240 306	2 155 629	1 759 967	-18,4
	Industrial and warehouse space	square metres	141 226	44 332	128 029	407 436	384 481	-5,6
		R'000	761 086	254 836	702 834	2 173 904	2 141 691	-1,5
	Other non-residential buildings 3/	square metres	39 309	15 982	6 792	157 127	59 694	-62,0
		R'000	245 640	146 590	59 353	999 113	455 543	-54,4
	<b>Total non-residential buildings</b>	<b>R'000</b>	<b>1 819 266</b>	<b>835 924</b>	<b>1 458 694</b>	<b>7 351 903</b>	<b>6 881 768</b>	<b>-6,4</b>
	<b>Additions and alterations</b>	Dwelling-houses	square metres	114 764	83 751	86 085	500 399	452 395
R'000			679 185	502 689	562 125	2 918 866	2 811 299	-3,7
Other buildings 4/		square metres	29 455	21 265	29 150	143 034	150 674	5,3
		R'000	234 235	186 383	378 226	1 216 363	1 512 098	24,3
<b>Total additions and alterations</b>	<b>R'000</b>	<b>913 420</b>	<b>689 072</b>	<b>940 351</b>	<b>4 135 229</b>	<b>4 323 397</b>	<b>4,6</b>	
<b>Recorded buildings completed</b>	<b>Total at current prices</b>	<b>R'000</b>	<b>6 007 966</b>	<b>5 245 445</b>	<b>5 389 270</b>	<b>24 270 378</b>	<b>26 855 908</b>	<b>10,7</b>

1/ The percentage change between cumulative figures for 2016 and 2017.

2/ Other residential buildings include institutions for the disabled, boarding houses, hostels and tourism accommodation e.g. hotels, motels, guest-houses, holiday chalets, bed-and-breakfast accommodation and casinos.

3/ Other non-residential space includes churches, sport and recreation clubs, schools, crèches, hospitals and all other non-residential space.

4/ Other buildings include other residential buildings, non-residential buildings and internal alterations. No square metres are collected for internal alterations.

**Table 20 – Buildings reported as completed to larger municipalities at current prices by type of building: Western Cape**

			May 2016	Apr. 2017	May 2017	Jan. - May 2016	Jan. - May 2017	% change 1/	
Category of building	Type of building	Measuring unit							
<b>Residential buildings</b>	Dwelling-houses < 80 square metres	Number	258	326	489	1 467	2 620	78,6	
		square metres	11 548	15 153	22 258	66 427	118 741	78,8	
		R'000	53 489	83 240	131 107	337 920	645 029	90,9	
	Dwelling-houses >= 80 square metres	Number	300	234	351	1 298	1 298	0,0	
		square metres	71 942	54 426	85 142	302 335	303 450	0,4	
		R'000	455 909	349 285	575 819	1 884 691	1 985 056	5,3	
	Flats and townhouses	Number	554	163	182	1 190	1 274	7,1	
		square metres	55 611	20 906	21 438	127 257	146 357	15,0	
		R'000	452 084	159 588	163 375	993 426	1 101 536	10,9	
	Other residential buildings 2/	square metres	0	218	9 473	1 069	26 591	2 387,5	
		R'000	0	1 456	66 311	9 338	202 289	2 066,3	
	<b>Total residential buildings</b>		<b>R'000</b>	<b>961 482</b>	<b>593 569</b>	<b>936 612</b>	<b>3 225 375</b>	<b>3 933 910</b>	<b>22,0</b>
<b>Non-residential buildings</b>	Office and banking space	square metres	11 269	1 175	19 513	62 090	102 981	65,9	
		R'000	73 640	7 867	155 884	386 731	754 400	95,1	
	Shopping space	square metres	1 164	3 892	2 966	14 569	12 738	-12,6	
		R'000	9 754	26 914	19 000	111 866	85 466	-23,6	
	Industrial and warehouse space	square metres	32 639	22 719	31 219	83 424	100 344	20,3	
		R'000	192 888	142 534	209 708	521 257	667 339	28,0	
	Other non-residential buildings 3/	square metres	7 392	5 071	1 185	53 065	19 284	-63,7	
		R'000	45 727	41 826	7 658	362 545	128 034	-64,7	
<b>Total non-residential buildings</b>		<b>R'000</b>	<b>322 009</b>	<b>219 141</b>	<b>392 250</b>	<b>1 382 399</b>	<b>1 635 239</b>	<b>18,3</b>	
<b>Additions and alterations</b>	Dwelling-houses	square metres	40 810	34 308	40 603	190 080	220 023	15,8	
		R'000	225 791	198 793	240 459	980 175	1 220 782	24,5	
	Other buildings 4/	square metres	11 114	8 571	15 367	53 937	54 036	0,2	
		R'000	109 846	80 412	167 292	533 675	605 833	13,5	
<b>Total additions and alterations</b>		<b>R'000</b>	<b>335 637</b>	<b>279 205</b>	<b>407 751</b>	<b>1 513 850</b>	<b>1 826 615</b>	<b>20,7</b>	
<b>Recorded buildings completed</b>	<b>Total at current prices</b>		<b>R'000</b>	<b>1 619 128</b>	<b>1 091 915</b>	<b>1 736 613</b>	<b>6 121 624</b>	<b>7 395 764</b>	<b>20,8</b>

1/ The percentage change between cumulative figures for 2016 and 2017.

2/ Other residential buildings include institutions for the disabled, boarding houses, hostels and tourism accommodation e.g. hotels, motels, guest-houses, holiday chalets, bed-and-breakfast accommodation and casinos.

3/ Other non-residential space includes churches, sport and recreation clubs, schools, crèches, hospitals and all other non-residential space.

4/ Other buildings include other residential buildings, non-residential buildings and internal alterations. No square metres are collected for internal alterations.

**Table 21 – Buildings reported as completed to larger municipalities at current prices by type of building: Eastern Cape**

			May 2016	Apr. 2017	May 2017	Jan. - May 2016	Jan. - May 2017	% change 1/	
Category of building	Type of building	Measuring unit							
<b>Residential buildings</b>	Dwelling-houses < 80 square metres	Number	89	34	68	252	145	-42,5	
		square metres	4 012	1 856	3 462	12 710	7 934	-37,6	
		R'000	12 707	10 590	19 658	51 779	44 351	-14,3	
	Dwelling-houses >= 80 square metres	Number	53	39	68	161	232	44,1	
		square metres	11 872	6 577	12 918	34 374	50 396	46,6	
		R'000	65 451	35 438	76 513	185 456	271 052	46,2	
	Flats and townhouses	Number	34	1	7	244	60	-75,4	
		square metres	4 338	215	841	23 203	5 332	-77,0	
		R'000	21 668	1 184	4 001	126 391	30 754	-75,7	
	Other residential buildings 2/	square metres	0	0	0	1 059	3 139	196,4	
		R'000	0	0	0	6 884	17 775	158,2	
	<b>Total residential buildings</b>		<b>R'000</b>	<b>99 826</b>	<b>47 212</b>	<b>100 172</b>	<b>370 510</b>	<b>363 932</b>	<b>-1,8</b>
<b>Non-residential buildings</b>	Office and banking space	square metres	0	0	0	136	3 023	2 122,8	
		R'000	0	0	0	802	13 483	1 581,2	
	Shopping space	square metres	0	0	734	450	1 892	320,4	
		R'000	0	0	3 303	2 558	9 025	252,8	
	Industrial and warehouse space	square metres	0	0	835	3 723	7 074	90,0	
		R'000	0	0	3 758	15 764	34 729	120,3	
	Other non-residential buildings 3/	square metres	0	164	0	51	1 163	2 180,4	
		R'000	0	1 018	0	230	6 166	2 580,9	
	<b>Total non-residential buildings</b>		<b>R'000</b>	<b>0</b>	<b>1 018</b>	<b>7 061</b>	<b>19 354</b>	<b>63 403</b>	<b>227,6</b>
	<b>Additions and alterations</b>	Dwelling-houses	square metres	5 777	8 141	10 161	22 657	38 114	68,2
R'000			28 483	37 770	46 621	101 017	179 959	78,1	
Other buildings 4/		square metres	443	474	1 365	8 897	14 255	60,2	
		R'000	4 966	3 987	26 577	43 017	105 015	144,1	
<b>Total additions and alterations</b>		<b>R'000</b>	<b>33 449</b>	<b>41 757</b>	<b>73 198</b>	<b>144 034</b>	<b>284 974</b>	<b>97,9</b>	
<b>Recorded buildings completed</b>	<b>Total at current prices</b>		<b>R'000</b>	<b>133 275</b>	<b>89 987</b>	<b>180 431</b>	<b>533 898</b>	<b>712 309</b>	<b>33,4</b>

1/ The percentage change between cumulative figures for 2016 and 2017.

2/ Other residential buildings include institutions for the disabled, boarding houses, hostels and tourism accommodation e.g. hotels, motels, guest-houses, holiday chalets, bed-and-breakfast accommodation and casinos.

3/ Other non-residential space includes churches, sport and recreation clubs, schools, crèches, hospitals and all other non-residential space.

4/ Other buildings include other residential buildings, non-residential buildings and internal alterations. No square metres are collected for internal alterations.

**Table 22 – Buildings reported as completed to larger municipalities at current prices by type of building: Northern Cape**

			May 2016	Apr. 2017	May 2017	Jan. - May 2016	Jan. - May 2017	% change 1/	
Category of building	Type of building	Measuring unit							
<b>Residential buildings</b>	Dwelling-houses < 80 square metres	Number	0	1	0	0	1	..	
		square metres	0	76	0	0	76	..	
		R'000	0	456	0	0	456	..	
	Dwelling-houses >= 80 square metres	Number	10	3	5	29	24	-17,2	
		square metres	1 235	695	1 164	5 163	5 101	-1,2	
		R'000	8 001	4 347	8 092	31 261	35 092	12,3	
	Flats and townhouses	Number	0	13	0	1	15	1 400,0	
		square metres	0	1 162	0	149	1 333	794,6	
		R'000	0	7 553	0	1 028	8 665	742,9	
	Other residential buildings 2/	square metres	0	0	0	158	935	491,8	
		R'000	0	0	0	948	5 512	481,4	
	<b>Total residential buildings</b>		<b>R'000</b>	<b>8 001</b>	<b>12 356</b>	<b>8 092</b>	<b>33 237</b>	<b>49 725</b>	<b>49,6</b>
<b>Non-residential buildings</b>	Office and banking space	square metres	325	1 440	505	325	1 945	498,5	
		R'000	1 463	7 920	3 283	1 463	11 203	665,8	
	Shopping space	square metres	0	0	0	0	120	..	
		R'000	0	0	0	0	720	..	
	Industrial and warehouse space	square metres	0	0	0	0	0	..	
		R'000	0	0	0	0	0	..	
	Other non-residential buildings 3/	square metres	0	0	0	0	0	..	
		R'000	0	0	0	0	0	..	
	<b>Total non-residential buildings</b>		<b>R'000</b>	<b>1 463</b>	<b>7 920</b>	<b>3 283</b>	<b>1 463</b>	<b>11 923</b>	<b>715,0</b>
	<b>Additions and alterations</b>	Dwelling-houses	square metres	4 040	1 337	2 821	17 905	6 221	-65,3
R'000			29 501	9 648	19 946	129 217	46 250	-64,2	
Other buildings 4/		square metres	1 834	951	0	2 885	2 518	-12,7	
		R'000	12 784	5 968	90	22 611	19 827	-12,3	
<b>Total additions and alterations</b>		<b>R'000</b>	<b>42 285</b>	<b>15 616</b>	<b>20 036</b>	<b>151 828</b>	<b>66 077</b>	<b>-56,5</b>	
<b>Recorded buildings completed</b>	<b>Total at current prices</b>	<b>R'000</b>	<b>51 749</b>	<b>35 892</b>	<b>31 411</b>	<b>186 528</b>	<b>127 725</b>	<b>-31,5</b>	

1/ The percentage change between cumulative figures for 2016 and 2017.

2/ Other residential buildings include institutions for the disabled, boarding houses, hostels and tourism accommodation e.g. hotels, motels, guest-houses, holiday chalets, bed-and-breakfast accommodation and casinos.

3/ Other non-residential space includes churches, sport and recreation clubs, schools, crèches, hospitals and all other non-residential space.

4/ Other buildings include other residential buildings, non-residential buildings and internal alterations. No square metres are collected for internal alterations.

**Table 23 – Buildings reported as completed to larger municipalities at current prices by type of building: Free State**

			May 2016	Apr. 2017	May 2017	Jan. - May 2016	Jan. - May 2017	% change 1/	
Category of building	Type of building	Measuring unit							
<b>Residential buildings</b>	Dwelling-houses < 80 square metres	Number	122	1	0	172	58	-66,3	
		square metres	6 774	61	0	9 579	3 283	-65,7	
		R'000	13 808	152	0	23 587	16 561	-29,8	
	Dwelling-houses >= 80 square metres	Number	34	13	13	136	68	-50,0	
		square metres	6 635	2 593	3 421	25 407	12 263	-51,7	
		R'000	36 276	14 486	20 355	127 948	67 873	-47,0	
	Flats and townhouses	Number	179	3	26	1 060	390	-63,2	
		square metres	9 429	360	2 271	44 897	29 735	-33,8	
		R'000	58 547	2 160	11 777	219 063	203 665	-7,0	
	Other residential buildings 2/	square metres	0	0	0	105	0	..	
		R'000	0	0	0	525	0	..	
	<b>Total residential buildings</b>		<b>R'000</b>	<b>108 631</b>	<b>16 798</b>	<b>32 132</b>	<b>371 123</b>	<b>288 099</b>	<b>-22,4</b>
<b>Non-residential buildings</b>	Office and banking space	square metres	0	1 335	0	6 066	2 573	-57,6	
		R'000	0	8 983	0	42 462	17 649	-58,4	
	Shopping space	square metres	4 031	0	0	15 618	786	-95,0	
		R'000	26 897	0	0	115 182	3 990	-96,5	
	Industrial and warehouse space	square metres	15 367	0	0	26 331	1 340	-94,9	
		R'000	86 150	0	0	135 489	7 315	-94,6	
	Other non-residential buildings 3/	square metres	0	0	0	0	0	..	
		R'000	0	0	0	0	0	..	
	<b>Total non-residential buildings</b>		<b>R'000</b>	<b>113 047</b>	<b>8 983</b>	<b>0</b>	<b>293 133</b>	<b>28 954</b>	<b>-90,1</b>
	<b>Additions and alterations</b>	Dwelling-houses	square metres	2 260	4 412	1 176	12 941	7 875	-39,1
R'000			10 432	19 854	5 292	58 825	35 956	-38,9	
Other buildings 4/		square metres	225	269	47	1 526	599	-60,7	
		R'000	2 073	1 984	312	17 655	9 862	-44,1	
<b>Total additions and alterations</b>		<b>R'000</b>	<b>12 505</b>	<b>21 838</b>	<b>5 604</b>	<b>76 480</b>	<b>45 818</b>	<b>-40,1</b>	
<b>Recorded buildings completed</b>	<b>Total at current prices</b>		<b>R'000</b>	<b>234 183</b>	<b>47 619</b>	<b>37 736</b>	<b>740 736</b>	<b>362 871</b>	<b>-51,0</b>

1/ The percentage change between cumulative figures for 2016 and 2017.

2/ Other residential buildings include institutions for the disabled, boarding houses, hostels and tourism accommodation e.g. hotels, motels, guest-houses, holiday chalets, bed-and-breakfast accommodation and casinos.

3/ Other non-residential space includes churches, sport and recreation clubs, schools, crèches, hospitals and all other non-residential space.

4/ Other buildings include other residential buildings, non-residential buildings and internal alterations. No square metres are collected for internal alterations.



**Table 24 – Buildings reported as completed to larger municipalities at current prices by type of building: KwaZulu-Natal**

			May 2016	Apr. 2017	May 2017	Jan. - May 2016	Jan. - May 2017	% change 1/	
Category of building	Type of building	Measuring unit							
Residential buildings	Dwelling-houses < 80 square metres	Number	31	8	12	104	47	-54,8	
		square metres	1 873	477	704	6 106	2 647	-56,6	
		R'000	15 694	3 605	6 463	51 395	23 448	-54,4	
	Dwelling-houses >= 80 square metres	Number	43	55	75	298	327	9,7	
		square metres	11 930	17 297	25 597	79 201	102 403	29,3	
		R'000	108 216	156 519	234 882	648 444	925 333	42,7	
	Flats and townhouses	Number	145	47	45	323	657	103,4	
		square metres	25 085	13 927	12 666	57 489	73 497	27,8	
		R'000	249 597	117 979	109 060	497 505	691 047	38,9	
	Other residential buildings 2/	square metres	0	628	0	7 952	12 095	52,1	
		R'000	0	5 282	0	44 879	134 848	200,5	
	<b>Total residential buildings</b>		<b>R'000</b>	<b>373 507</b>	<b>283 385</b>	<b>350 405</b>	<b>1 242 223</b>	<b>1 774 676</b>	<b>42,9</b>
	Non-residential buildings	Office and banking space	square metres	17 669	0	22 072	86 606	48 345	-44,2
R'000			176 690	0	231 758	754 503	497 211	-34,1	
Shopping space		square metres	27 235	0	12 448	141 029	74 145	-47,4	
		R'000	269 960	0	80 554	1 337 753	728 372	-45,6	
Industrial and warehouse space		square metres	33 909	665	28 872	82 019	58 927	-28,2	
		R'000	161 631	3 791	164 479	414 582	333 882	-19,5	
Other non-residential buildings 3/		square metres	2 939	9 556	0	3 434	13 838	303,0	
		R'000	23 411	97 791	0	25 648	132 766	417,6	
<b>Total non-residential buildings</b>		<b>R'000</b>	<b>631 692</b>	<b>101 582</b>	<b>476 791</b>	<b>2 532 486</b>	<b>1 692 231</b>	<b>-33,2</b>	
Additions and alterations		Dwelling-houses	square metres	14 280	6 132	10 500	65 637	49 103	-25,2
	R'000		127 395	61 313	104 993	591 070	485 362	-17,9	
	Other buildings 4/	square metres	3 635	4 292	5 190	28 688	32 878	14,6	
		R'000	23 540	35 970	121 868	204 070	372 034	82,3	
	<b>Total additions and alterations</b>		<b>R'000</b>	<b>150 935</b>	<b>97 283</b>	<b>226 861</b>	<b>795 140</b>	<b>857 396</b>	<b>7,8</b>
<b>Recorded buildings completed</b>	<b>Total at current prices</b>		<b>R'000</b>	<b>1 156 134</b>	<b>482 250</b>	<b>1 054 057</b>	<b>4 569 849</b>	<b>4 324 303</b>	<b>-5,4</b>

1/ The percentage change between cumulative figures for 2016 and 2017.

2/ Other residential buildings include institutions for the disabled, boarding houses, hostels and tourism accommodation e.g. hotels, motels, guest-houses, holiday chalets, bed-and-breakfast accommodation and casinos.

3/ Other non-residential space includes churches, sport and recreation clubs, schools, crèches, hospitals and all other non-residential space.

4/ Other buildings include other residential buildings, non-residential buildings and internal alterations. No square metres are collected for internal alterations.

**Table 25 – Buildings reported as completed to larger municipalities at current prices by type of building: North West**

			May 2016	Apr. 2017	May 2017	Jan. - May 2016	Jan. - May 2017	% change 1/	
Category of building	Type of building	Measuring unit							
<b>Residential buildings</b>	Dwelling-houses < 80 square metres	Number	150	31	65	257	205	-20,2	
		square metres	9 352	1 966	3 720	15 884	11 890	-25,1	
		R'000	35 265	9 180	15 641	58 347	51 163	-12,3	
	Dwelling-houses >= 80 square metres	Number	301	70	50	730	262	-64,1	
		square metres	40 156	13 290	8 082	111 855	50 100	-55,2	
		R'000	195 821	67 698	38 772	528 441	256 862	-51,4	
	Flats and townhouses	Number	19	4	6	331	132	-60,1	
		square metres	2 357	800	413	30 940	10 357	-66,5	
		R'000	9 756	4 800	2 037	151 935	61 425	-59,6	
	Other residential buildings 2/	square metres	0	0	0	0	0	..	
		R'000	0	0	0	0	0	..	
	<b>Total residential buildings</b>		<b>R'000</b>	<b>240 842</b>	<b>81 678</b>	<b>56 450</b>	<b>738 723</b>	<b>369 450</b>	<b>-50,0</b>
<b>Non-residential buildings</b>	Office and banking space	square metres	2 490	1 618	0	5 106	1 618	-68,3	
		R'000	12 168	8 092	0	25 248	8 092	-67,9	
	Shopping space	square metres	2 372	11 388	687	9 256	16 915	82,7	
		R'000	12 408	56 940	3 435	49 797	86 944	74,6	
	Industrial and warehouse space	square metres	2 269	600	636	2 940	2 810	-4,4	
		R'000	12 710	2 700	3 180	16 110	12 964	-19,5	
	Other non-residential buildings 3/	square metres	1 746	1 191	0	4 147	1 191	-71,3	
		R'000	7 857	5 955	0	19 086	5 955	-68,8	
	<b>Total non-residential buildings</b>		<b>R'000</b>	<b>45 143</b>	<b>73 687</b>	<b>6 615</b>	<b>110 241</b>	<b>113 955</b>	<b>3,4</b>
	<b>Additions and alterations</b>	Dwelling-houses	square metres	16 687	10 918	720	60 293	23 808	-60,5
R'000			74 499	53 406	3 240	256 830	111 372	-56,6	
Other buildings 4/		square metres	1 522	622	103	4 353	3 284	-24,6	
		R'000	6 764	3 207	577	20 168	17 455	-13,5	
<b>Total additions and alterations</b>		<b>R'000</b>	<b>81 263</b>	<b>56 613</b>	<b>3 817</b>	<b>276 998</b>	<b>128 827</b>	<b>-53,5</b>	
<b>Recorded buildings completed</b>	<b>Total at current prices</b>		<b>R'000</b>	<b>367 248</b>	<b>211 978</b>	<b>66 882</b>	<b>1 125 962</b>	<b>612 232</b>	<b>-45,6</b>

1/ The percentage change between cumulative figures for 2016 and 2017.

2/ Other residential buildings include institutions for the disabled, boarding houses, hostels and tourism accommodation e.g. hotels, motels, guest-houses, holiday chalets, bed-and-breakfast accommodation and casinos.

3/ Other non-residential space includes churches, sport and recreation clubs, schools, crèches, hospitals and all other non-residential space.

4/ Other buildings include other residential buildings, non-residential buildings and internal alterations. No square metres are collected for internal alterations.

**Table 26 – Buildings reported as completed to larger municipalities at current prices by type of building: Gauteng**

			May 2016	Apr. 2017	May 2017	Jan. - May 2016	Jan. - May 2017	% change 1/	
Category of building	Type of building	Measuring unit							
<b>Residential buildings</b>	Dwelling-houses < 80 square metres	Number	870	768	838	3 181	2 725	-14,3	
		square metres	41 632	36 424	39 484	150 751	132 522	-12,1	
		R'000	143 681	151 546	143 072	532 578	560 836	5,3	
	Dwelling-houses >= 80 square metres	Number	421	244	295	1 855	1 420	-23,5	
		square metres	117 919	81 375	96 553	517 433	481 100	-7,0	
		R'000	861 548	609 933	731 882	3 794 602	3 700 485	-2,5	
	Flats and townhouses	Number	309	816	557	2 030	3 722	83,3	
		square metres	42 771	66 615	58 553	212 089	323 994	52,8	
		R'000	326 222	553 416	509 988	1 776 746	2 742 970	54,4	
	Other residential buildings 2/	square metres	0	112 995	0	712	120 649	16 845,1	
		R'000	0	1 253 597	0	4 442	1 307 571	29 336,5	
	<b>Total residential buildings</b>		<b>R'000</b>	<b>1 331 451</b>	<b>2 568 492</b>	<b>1 384 942</b>	<b>6 108 368</b>	<b>8 311 862</b>	<b>36,1</b>
<b>Non-residential buildings</b>	Office and banking space	square metres	8 697	19 847	8 154	89 572	115 882	29,4	
		R'000	70 167	213 156	65 276	773 751	1 215 815	57,1	
	Shopping space	square metres	19 585	8 384	14 140	67 748	96 245	42,1	
		R'000	155 989	71 564	125 704	532 604	778 133	46,1	
	Industrial and warehouse space	square metres	54 422	19 560	63 784	196 577	196 809	0,1	
		R'000	295 239	102 221	305 611	1 012 365	1 001 665	-1,1	
	Other non-residential buildings 3/	square metres	24 903	0	5 262	91 619	21 901	-76,1	
		R'000	159 329	0	49 970	570 098	171 034	-70,0	
	<b>Total non-residential buildings</b>		<b>R'000</b>	<b>680 724</b>	<b>386 941</b>	<b>546 561</b>	<b>2 888 818</b>	<b>3 166 647</b>	<b>9,6</b>
	<b>Additions and alterations</b>	Dwelling-houses	square metres	21 884	15 262	16 243	96 996	89 012	-8,2
R'000			143 981	106 426	124 128	656 520	650 887	-0,9	
Other buildings 4/		square metres	5 548	5 498	5 236	32 434	39 191	20,8	
		R'000	47 258	50 645	51 433	317 883	352 429	10,9	
<b>Total additions and alterations</b>		<b>R'000</b>	<b>191 239</b>	<b>157 071</b>	<b>175 561</b>	<b>974 403</b>	<b>1 003 316</b>	<b>3,0</b>	
<b>Recorded buildings completed</b>	<b>Total at current prices</b>		<b>R'000</b>	<b>2 203 414</b>	<b>3 112 504</b>	<b>2 107 064</b>	<b>9 971 589</b>	<b>12 481 825</b>	<b>25,2</b>

1/ The percentage change between cumulative figures for 2016 and 2017.

2/ Other residential buildings include institutions for the disabled, boarding houses, hostels and tourism accommodation e.g. hotels, motels, guest-houses, holiday chalets, bed-and-breakfast accommodation and casinos.

3/ Other non-residential space includes churches, sport and recreation clubs, schools, crèches, hospitals and all other non-residential space.

4/ Other buildings include other residential buildings, non-residential buildings and internal alterations. No square metres are collected for internal alterations.

**Table 27 – Buildings reported as completed to larger municipalities at current prices by type of building: Mpumalanga**

			May 2016	Apr. 2017	May 2017	Jan. - May 2016	Jan. - May 2017	% change 1/	
Category of building	Type of building	Measuring unit							
<b>Residential buildings</b>	Dwelling-houses < 80 square metres	Number	116	51	53	499	325	-34,9	
		square metres	5 573	2 416	2 415	24 128	15 055	-37,6	
		R'000	22 269	8 728	9 786	91 529	57 541	-37,1	
	Dwelling-houses >= 80 square metres	Number	71	30	33	357	131	-63,3	
		square metres	17 598	6 218	8 369	80 081	32 247	-59,7	
		R'000	77 902	27 720	41 329	349 088	152 584	-56,3	
	Flats and townhouses	Number	19	0	26	88	192	118,2	
		square metres	1 362	0	1 872	6 550	20 191	208,3	
		R'000	6 110	0	9 664	29 200	93 859	221,4	
	Other residential buildings 2/	square metres	1 001	0	0	1 001	0	..	
		R'000	4 505	0	0	4 505	0	..	
	<b>Total residential buildings</b>		<b>R'000</b>	<b>110 786</b>	<b>36 448</b>	<b>60 779</b>	<b>474 322</b>	<b>303 984</b>	<b>-35,9</b>
<b>Non-residential buildings</b>	Office and banking space	square metres	234	0	0	6 477	0	..	
		R'000	1 076	0	0	35 441	0	..	
	Shopping space	square metres	506	7 206	1 662	1 293	14 168	995,7	
		R'000	2 328	33 062	8 310	5 869	66 527	1 033,5	
	Industrial and warehouse space	square metres	632	438	2 683	8 534	11 964	40,2	
		R'000	2 528	2 015	16 098	39 127	57 907	48,0	
	Other non-residential buildings 3/	square metres	2 329	0	0	3 967	1 972	-50,3	
		R'000	9 316	0	0	17 246	9 863	-42,8	
	<b>Total non-residential buildings</b>		<b>R'000</b>	<b>15 248</b>	<b>35 077</b>	<b>24 408</b>	<b>97 683</b>	<b>134 297</b>	<b>37,5</b>
	<b>Additions and alterations</b>	Dwelling-houses	square metres	8 189	3 122	3 440	30 567	16 644	-45,5
R'000			35 101	14 884	15 366	129 305	73 056	-43,5	
Other buildings 4/		square metres	5 064	375	0	10 174	1 700	-83,3	
		R'000	26 640	3 107	100	52 070	15 773	-69,7	
<b>Total additions and alterations</b>		<b>R'000</b>	<b>61 741</b>	<b>17 991</b>	<b>15 466</b>	<b>181 375</b>	<b>88 829</b>	<b>-51,0</b>	
<b>Recorded buildings completed</b>	<b>Total at current prices</b>	<b>R'000</b>	<b>187 775</b>	<b>89 516</b>	<b>100 653</b>	<b>753 380</b>	<b>527 110</b>	<b>-30,0</b>	

1/ The percentage change between cumulative figures for 2016 and 2017.

2/ Other residential buildings include institutions for the disabled, boarding houses, hostels and tourism accommodation e.g. hotels, motels, guest-houses, holiday chalets, bed-and-breakfast accommodation and casinos.

3/ Other non-residential space includes churches, sport and recreation clubs, schools, crèches, hospitals and all other non-residential space.

4/ Other buildings include other residential buildings, non-residential buildings and internal alterations. No square metres are collected for internal alterations.

**Table 28 – Buildings reported as completed to larger municipalities at current prices by type of building: Limpopo**

			May 2016	Apr. 2017	May 2017	Jan. - May 2016	Jan. - May 2017	% change 1/	
Category of building	Type of building	Measuring unit							
Residential buildings	Dwelling-houses < 80 square metres	Number	14	308	11	78	339	334,6	
		square metres	837	13 943	689	4 685	15 768	236,6	
		R'000	4 185	28 915	3 445	23 332	38 040	63,0	
	Dwelling-houses >= 80 square metres	Number	26	20	24	117	100	-14,5	
		square metres	5 308	6 475	6 315	30 020	27 435	-8,6	
		R'000	27 019	32 646	31 829	145 591	136 646	-6,1	
	Flats and townhouses	Number	28	19	66	120	96	-20,0	
		square metres	1 910	3 790	5 559	9 939	10 657	7,2	
		R'000	9 550	18 950	25 367	50 442	51 659	2,4	
	Other residential buildings 2/	square metres	0	0	0	0	5 752	..	
		R'000	0	0	0	0	28 760	..	
	<b>Total residential buildings</b>		<b>R'000</b>	<b>40 754</b>	<b>80 511</b>	<b>60 641</b>	<b>219 365</b>	<b>255 105</b>	<b>16,3</b>
	Non-residential buildings	Office and banking space	square metres	0	0	0	580	1 322	127,9
R'000			0	0	0	2 856	6 714	135,1	
Shopping space		square metres	0	0	0	0	158	..	
		R'000	0	0	0	0	790	..	
Industrial and warehouse space		square metres	1 988	350	0	3 888	5 213	34,1	
		R'000	9 940	1 575	0	19 210	25 890	34,8	
Other non-residential buildings 3/		square metres	0	0	345	844	345	-59,1	
		R'000	0	0	1 725	4 260	1 725	-59,5	
<b>Total non-residential buildings</b>		<b>R'000</b>	<b>9 940</b>	<b>1 575</b>	<b>1 725</b>	<b>26 326</b>	<b>35 119</b>	<b>33,4</b>	
Additions and alterations		Dwelling-houses	square metres	837	119	421	3 323	1 595	-52,0
	R'000		4 002	595	2 080	15 907	7 675	-51,8	
	Other buildings 4/	square metres	70	213	1 842	140	2 213	1 480,7	
		R'000	364	1 103	9 977	5 214	13 870	166,0	
<b>Total additions and alterations</b>		<b>R'000</b>	<b>4 366</b>	<b>1 698</b>	<b>12 057</b>	<b>21 121</b>	<b>21 545</b>	<b>2,0</b>	
<b>Recorded buildings completed</b>	<b>Total at current prices</b>		<b>R'000</b>	<b>55 060</b>	<b>83 784</b>	<b>74 423</b>	<b>266 812</b>	<b>311 769</b>	<b>16,8</b>

1/ The percentage change between cumulative figures for 2016 and 2017.

2/ Other residential buildings include institutions for the disabled, boarding houses, hostels and tourism accommodation e.g. hotels, motels, guest-houses, holiday chalets, bed-and-breakfast accommodation and casinos.

3/ Other non-residential space includes churches, sport and recreation clubs, schools, crèches, hospitals and all other non-residential space.

4/ Other buildings include other residential buildings, non-residential buildings and internal alterations. No square metres are collected for internal alterations.

## Explanatory notes

<b>Introduction</b>	1	Statistics South Africa (Stats SA) conducts a monthly building statistics survey collecting information regarding building plans passed and buildings completed, financed by the private sector, from the largest local government institutions in South Africa. According to these institutions, they are not always notified about low-cost housing projects and, therefore, do not include the bulk of low-cost dwelling-houses in their reporting. Data regarding subsidised low-cost dwelling-houses can be obtained from the Department of Human Settlements.
	2	In order to improve timeliness of the publication, some information for the current month has been estimated due to late submission by respondents. These estimates will be revised in the next statistical release(s) as soon as actual information is available.
<b>Purpose of the survey</b>	3	The monthly survey data are used in monitoring the state of economy and formulation of economic policy. Furthermore, the results are important inputs to estimate the gross domestic product (GDP) and to calculate the Composite Leading Business Cycle Indicator. The data are extensively used by the private sector.
<b>Scope of the survey</b>	4	This survey covers local government institutions conducting activities for the private sector regarding - <ul style="list-style-type: none"> <li>• passing of building plans; and</li> <li>• final inspection of completed buildings.</li> </ul>
<b>Classification</b>	5	Building activities are classified in division 5 according to the 1993 edition of the <i>Standard Industrial Classification of all Economic Activities, (SIC) Fifth Edition, Report No. 09-90-02</i> . The SIC is based on the 1990 <i>International Standard Industrial Classification of all Economic Activities (ISIC)</i> with suitable adaptations for local conditions.
<b>Collection rate</b>	6	The preliminary collection rate for the survey on building statistics for May 2017 was 94,5%. The collection rate for April 2017 was 94,5%.
<b>Statistical unit</b>	7	The statistical unit for the collection of information is a local government institution. Local government institutions include district municipalities, metropolitan municipalities and local municipalities.
<b>Survey methodology and design</b>	8	Stats SA conducts a monthly survey of metropolitan municipalities and large local municipalities on building plans passed and buildings completed. An annual survey of the remaining municipalities is conducted regarding buildings completed. The monthly survey represents approximately 85 percent of the total value of buildings completed. Information regarding building plans passed and buildings completed for the private sector is collected by mail, fax and telephone.
<b>Constant prices</b>	9	The value of building plans passed and buildings completed at constant prices measures building activities in terms of ruling prices in a specific base year, which is currently 2015. The value of building plans passed at constant prices for each month is obtained by deflating the values at current prices with a price index known as the 'lump sum domestic buildings' as published in statistical release P0151: <i>Contract Price Adjustment Provisions (CPAP) Work Groups and Selected Materials Indices</i> . In order to be applicable, these indices (base February 1991=100) are converted to the base year 2015=100.

- Seasonal adjustment** 10 Seasonally adjusted estimates of building plans passed and buildings completed are generated each month, using the X-12-ARIMA Seasonal Adjustment Program developed by US Bureau of the Census Economic Research and Analyses Division, 1968.
- 11 Seasonal adjustment is a means of removing the estimated effects of normal seasonal variation from the series so that the effects of other influences on the series can be more clearly recognised. Seasonal adjustment does not aim to remove irregular or non-seasonal influences which may be present in any particular month. Influences that are volatile or unsystematic can still make it difficult to interpret the movement of the series even after adjustment for seasonal variations. Therefore, the month-to-month movements of seasonally adjusted estimates may not be reliable indicators of trend behaviour. The X-12-ARIMA procedure for building statistics is described in more detail on the Stats SA website at [Click to download building statistics seasonal adjustment May 2017](#)
- Trend cycle** 12 The trend is a long-term pattern or movement of a time series. The X-12-ARIMA Seasonal Adjustment Program is used for smoothing seasonally adjusted data.
- Revised figures** 13 Revised figures are due to late submission of data to Stats SA, or to respondents reporting revisions or corrections to their figures. Figures for the latest two years are therefore preliminary. Data are edited at municipal level.
- 14 Once a year the annual statistical release P5041.3: *Selected building statistics of the private sector as reported by local government institutions* is published with the revised and updated information at provincial and municipal level for the previous calendar year. Due to this comprehensive revision, the monthly statistical release P5041.1 reflects provincial revision where applicable.
- Related publications** 15 Users may also wish to refer to the following publications:
- P5041.3: *Selected building statistics of the private sector as reported by local government institutions* issued annually.
  - P9101.2: *Actual and expected expenditure on construction by the public sector per statistical region* issued annually.
  - *Building Statistics* (Report No. 50-11-01) issued annually.
- Rounding-off of figures** 16 Where necessary, the figures in the tables have been rounded off to the nearest digit shown.

**Symbols and abbreviations**

<b>17</b>	..	no meaningful percentage change between two specified periods available since either one or both of the totals are nil
	0	nil or figure too small to publish
	*	revised
	Stats SA	Statistics South Africa
	SIC	Standard Industrial Classification of all Economic Activities
	ISIC	International Standard Industrial Classification of all Economic Activities



## Glossary

<b>Additions and alterations</b>	Extensions to existing buildings as well as internal and external alterations of existing buildings.
<b>Blocks of flats</b>	High-density housing consisting of a number of self-contained dwelling-units, each with at least one living-room together with a kitchen and bathroom, conjoined to similar units in one building.
<b>Dwelling-house</b>	A free-standing, complete structure on a separate stand or a self-contained dwelling-unit, e.g. granny flat, on the same premises as an existing residence. Out-buildings and garages are included.
<b>Local government institutions</b>	Include – <ul style="list-style-type: none"> <li>• District municipalities;</li> <li>• Metropolitan municipalities; and</li> <li>• Local municipalities.</li> </ul>
<b>Municipality</b>	A generic term describing the “unit” of government in the local spheres responsible for local government in a geographically demarcated area and including district, metropolitan and local municipalities. It is an institution consisting of a municipal council (elected political representatives) and municipal administration (appointed officials).
<b>District municipality</b>	A municipality that has municipal executive and legislative authority in an area that includes more than one municipality, and which is described in section 155(1) of the Constitution as a category C municipality (refer to Local Government: Municipal Structure Act, 1998 (Act No. 117 of 1998)).
<b>Metropolitan municipality</b>	A municipality that has municipal executive and legislative authority in an area that includes more than one municipality, and which is described in section 155(1) of the Constitution as a category A municipality (refer to Local Government: Municipal Structure Act, 1998 (Act No. 117 of 1998)).
<b>Local municipality</b>	A municipality that shares municipal executive and legislative authority in its area with a district municipality within whose area it falls, which is described in section 155(1) of the constitution as a category B municipality.
<b>Non-residential buildings</b>	Factories and commercial, financial and other office buildings, as well as other buildings not used for residential purposes, such as churches, halls, clubs, schools and hospitals.
<b>Other residential buildings</b>	Institutions for the disabled, boarding houses, old people’s homes, hostels, hotels, motels, guesthouses, holiday chalets, bed-and-breakfast accommodation, entertainment centres and casinos.
<b>Percentage change</b>	<p>When using monthly actual values, the percentage change is the change in actual values of building activities (building plans passed or buildings completed) of the relevant month compared with the actual values of building activities (building plans passed or buildings completed) of the same month in the previous year expressed as a percentage.</p> <p>When using annual actual values, the percentage change is the change in the actual values of building activities (building plans passed or buildings completed) of the relevant year compared with the actual values of building activities (building plans passed or buildings completed) of the previous year expressed as a percentage.</p> <p>When using seasonally adjusted values, the percentage change is the change in the seasonally adjusted values of building activities (building plans passed or buildings completed) of the relevant month compared with the seasonally adjusted values of building activities (building plans passed or buildings completed) of the previous month expressed as a percentage.</p>

<b>Reference period</b>	One calendar month.
<b>Residential buildings</b>	Buildings that are used primarily as residences. Includes dwelling-houses, flats, townhouses and other residential buildings.
<b>Townhouses</b>	Multiple, medium-density dwelling-units including cluster housing, group housing, simplexes, duplexes, triplexes and other similar dwelling-units which are usually grouped together, with one level of each unit on ground level. This category excludes blocks of flats.

## Technical enquiries

**Nicolai Claassen** Telephone number: (012) 310 8007  
Email: nicolaic@statssa.gov.za

## General information

Stats SA publishes approximately 300 different statistical releases each year. It is not economically viable to produce them in more than one of South Africa's eleven official languages. Since the releases are used extensively, not only locally but also by international economic and social-scientific communities, Stats SA releases are published in English.

Stats SA has copyright on this publication. Users may apply the information as they wish, provided that they acknowledge Stats SA as the source of the basic data wherever they process, apply, utilise, publish or distribute the data and also that they specify that the relevant application and analysis (where applicable) result from their own processing of the data.

### Advance release calendar

An advance release calendar is disseminated on [www.statssa.gov.za](http://www.statssa.gov.za)

### Stats SA products

A complete set of Stats SA publications is available at the Stats SA Library and the following libraries:

National Library of South Africa, Pretoria Division  
National Library of South Africa, Cape Town Division  
Natal Society Library, Pietermaritzburg  
Library of Parliament, Cape Town  
Bloemfontein Public Library  
Johannesburg Public Library  
Eastern Cape Library Services, King William's Town  
Central Regional Library, Polokwane  
Central Reference Library, Mbombela  
Central Reference Collection, Kimberley  
Central Reference Library, Mmabatho

Stats SA also provides a subscription service.

### Electronic services

A large range of data is available via online services. For more details about our electronic services, contact Stats SA's user information service at (012) 310 8600.

You can visit us on the Internet at: [www.statssa.gov.za](http://www.statssa.gov.za)

### General enquiries

**User information services** Telephone number: (012) 310 8600  
Email address: [info@statssa.gov.za](mailto:info@statssa.gov.za)

**Postal address** Private Bag X44, Pretoria, 0001

*Produced by Stats SA*