

STATISTICAL RELEASE
P5041.1

**Selected building statistics of the private sector
as reported by local government institutions
(Preliminary)**

June 2017

Embargoed until:
17 August 2017
13:00

ENQUIRIES:
Nicolai Claassen
Tel: (012) 310 8007

FORTHCOMING ISSUE:
July 2017

EXPECTED RELEASE DATE:
21 September 2017

www.statssa.gov.za
info@statssa.gov.za
T +27 12 310 8911
F +27 12 310 8500

Private Bag X44, Pretoria, 0001, South Africa
ISibalo House, Koch Street, Salvokop, Pretoria, 0002



Contents

Results for January to June 2017.....	3
Tables	
Table 1 Value and percentage change of recorded building plans passed by larger municipalities at current prices by type of building	9
Table 2 Seasonally adjusted value and percentage change of recorded building plans passed by larger municipalities at current prices by type of building	10
Table 3 Value and percentage change of recorded building plans passed by larger municipalities at constant 2015 prices by type of building	11
Table 4 Seasonally adjusted value and percentage change of recorded building plans passed by larger municipalities at constant 2015 prices by type of building	12
Table 5 Value and percentage change of buildings reported as completed to larger municipalities at current prices by type of building	13
Table 6 Seasonally adjusted value and percentage change of buildings reported as completed to larger municipalities at current prices by type of building	14
Table 7 Value and percentage change of buildings reported as completed to larger municipalities at constant 2015 prices by type of building	15
Table 8 Seasonally adjusted value and percentage change of buildings reported as completed to larger municipalities at constant 2015 prices by type of building	16
Table 9 Recorded building plans passed by larger municipalities at current prices by type of building: South Africa	17
Table 10 Recorded building plans passed by larger municipalities at current prices by type of building: Western Cape.....	18
Table 11 Recorded building plans passed by larger municipalities at current prices by type of building: Eastern Cape.....	19
Table 12 Recorded building plans passed by larger municipalities at current prices by type of building: Northern Cape	20
Table 13 Recorded building plans passed by larger municipalities at current prices by type of building: Free State.....	21
Table 14 Recorded building plans passed by larger municipalities at current prices by type of building: KwaZulu-Natal	22
Table 15 Recorded building plans passed by larger municipalities at current prices by type of building: North West.....	23
Table 16 Recorded building plans passed by larger municipalities at current prices by type of building: Gauteng	24
Table 17 Recorded building plans passed by larger municipalities at current prices by type of building: Mpumalanga	25
Table 18 Recorded building plans passed by larger municipalities at current prices by type of building: Limpopo	26
Table 19 Buildings reported as completed to larger municipalities at current prices by type of building: South Africa	27
Table 20 Buildings reported as completed to larger municipalities at current prices by type of building: Western Cape.....	28
Table 21 Buildings reported as completed to larger municipalities at current prices by type of building: Eastern Cape.....	29
Table 22 Buildings reported as completed to larger municipalities at current prices by type of building: Northern Cape	30
Table 23 Buildings reported as completed to larger municipalities at current prices by type of building: Free State.....	31
Table 24 Buildings reported as completed to larger municipalities at current prices by type of building: KwaZulu-Natal	32
Table 25 Buildings reported as completed to larger municipalities at current prices by type of building: North West.....	33

Table 26	Buildings reported as completed to larger municipalities at current prices by type of building: Gauteng	34
Table 27	Buildings reported as completed to larger municipalities at current prices by type of building: Mpumalanga	35
Table 28	Buildings reported as completed to larger municipalities at current prices by type of building: Limpopo	36
Explanatory notes		37
Glossary		40
Technical enquiries		41
General information		42

Results for January to June 2017

**Table A – Recorded building plans passed by larger municipalities at current prices:
January to June 2016 versus January to June 2017**

Estimates at current prices	January to June 2016 1/	January to June 2017 1/	Difference in value between January to June 2016 and January to June 2017	% change between January to June 2016 and January to June 2017
	R'000	R'000	R'000	
Residential buildings	26 887 619	24 920 699	-1 966 920	-7,3
-Dwelling-houses	16 250 470	15 717 664	-532 806	-3,3
-Flats and townhouses	8 708 901	8 925 913	217 012	2,5
-Other residential buildings	1 928 248	277 122	-1 651 126	-85,6
Non-residential buildings	15 818 414	10 897 235	-4 921 179	-31,1
Additions and alterations	12 677 890	13 212 375	534 485	4,2
Total	55 383 923	49 030 309	-6 353 614	-11,5

1/ 2016 and 2017 figures should be regarded as preliminary because of possible backlogs and incomplete reporting by municipalities.

Total value of recorded building plans passed at current prices

The value of recorded building plans passed (at current prices) decreased by 11,5% (-R6 353,6 million) during January to June 2017 compared with January to June 2016.

Decreases were recorded for non-residential buildings (-31,1% or -R4 921,2 million) and residential buildings (-7,3% or -R1 966,9 million) – see Table A.

**Table B – Recorded building plans passed by larger municipalities aggregated to provincial level:
January to June 2016 versus January to June 2017**

Estimates at current prices	January to June 2016 1/	January to June 2017 1/	% contribution to the total value of building plans passed during January to June 2016	% change between January to June 2016 and January to June 2017	Contribution (% points) to the % change in the value of building plans passed between January to June 2016 and January to June 2017	Difference in value between January to June 2016 and January to June 2017
	R'000	R'000			2/	R'000
Western Cape	13 817 524	14 065 873	24,9	1,8	0,4	248 349
Eastern Cape	2 077 876	2 748 341	3,8	32,3	1,2	670 465
Northern Cape	472 835	355 878	0,9	-24,7	-0,2	-116 957
Free State	1 670 906	1 638 842	3,0	-1,9	-0,1	-32 064
KwaZulu-Natal	12 293 039	9 255 122	22,2	-24,7	-5,5	-3 037 917
North West	1 488 820	1 974 197	2,7	32,6	0,9	485 377
Gauteng	20 738 841	16 474 022	37,4	-20,6	-7,7	-4 264 819
Mpumalanga	2 004 271	1 508 185	3,6	-24,8	-0,9	-496 086
Limpopo	819 811	1 009 849	1,5	23,2	0,3	190 038
Total	55 383 923	49 030 309	100,0	-11,5	-11,5	-6 353 614

1/ 2016 and 2017 figures should be regarded as preliminary because of possible backlogs and incomplete reporting by municipalities.

2/ The contribution (percentage points) is calculated by multiplying the percentage change of each province between January to June 2016 and January to June 2017 by the percentage contribution of the corresponding province to the total value of building plans passed during January to June 2016, divided by 100.

The largest negative contributions to the total decrease of 11,5% (-R6 353,6 million) were made by Gauteng (contributing -7,7 percentage points or -R4 264,8 million) and KwaZulu-Natal (contributing -5,5 percentage points or -R3 037,9 million) – see Table B.

Table C – Recorded building plans passed by larger municipalities at constant 2015 prices: January to June 2016 versus January to June 2017

Estimates at constant 2015 prices	January to June 2016 1/	January to June 2017 1/	Difference in value between January to June 2016 and January to June 2017	% change between January to June 2016 and January to June 2017
	R'000	R'000	R'000	
Residential buildings	25 603 991	22 378 388	-3 225 603	-12,6
Non-residential buildings	15 160 471	9 791 005	-5 369 466	-35,4
Additions and alterations	12 071 587	11 863 026	-208 561	-1,7
Total	52 836 049	44 032 419	-8 803 630	-16,7

1/ 2016 and 2017 figures should be regarded as preliminary because of possible backlogs and incomplete reporting by municipalities.

Real value of recorded building plans passed

The real value of recorded building plans passed (at constant 2015 prices) decreased by 16,7% (-R8 803,6 million) year-on-year during January to June 2017. All three major building categories recorded decreases. The largest percentage decrease was recorded for non-residential buildings (-35,4% or -R5 369,5 million), followed by residential buildings (-12,6% or -R3 225,6 million) and additions and alterations (-1,7% or -R208,6 million) – see Table C.

Table D – Seasonally adjusted three-monthly key figures regarding recorded building plans passed by larger municipalities at constant 2015 prices

Seasonally adjusted estimates at constant 2015 prices	January to March 2017	April to June 2017	% change between January to March 2017 and April to June 2017
	R'000	R'000	
Residential buildings	11 411 417	11 475 935	0,6
Non-residential buildings 1/	5 211 385	4 579 620	-12,1
Additions and alterations	6 094 228	6 447 657	5,8
Total	22 717 029	22 503 212	-0,9

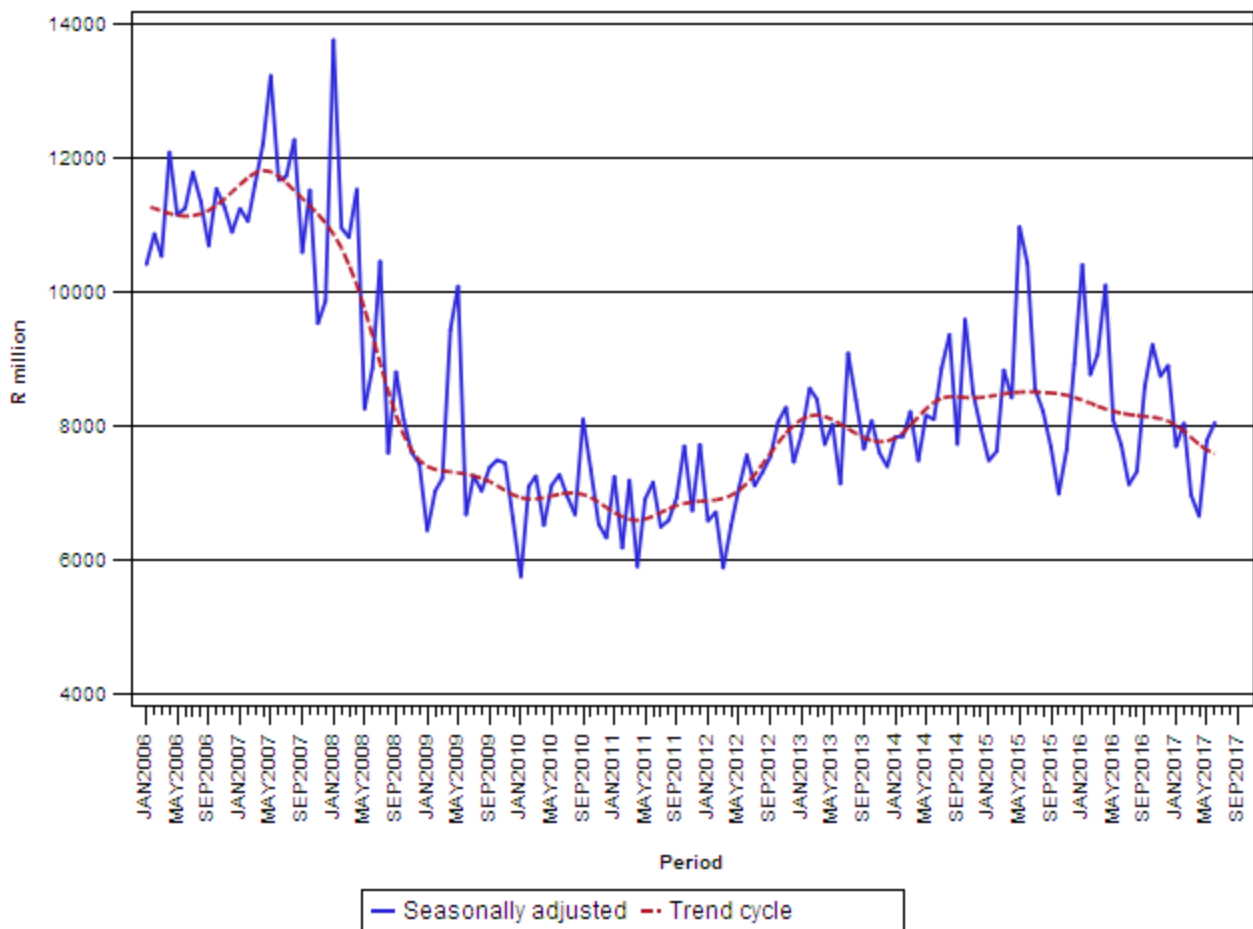
1/ Not seasonally adjusted because the presence of seasonality is not significant. See notes 10 and 11 on page 38.

Seasonally adjusted real value of recorded building plans passed

The seasonally adjusted real value of recorded building plans passed decreased by 0,9% in the second quarter of 2017 compared with the previous quarter. A decrease was recorded for non-residential buildings (-12,1%) while increases were recorded for additions and alterations (5,8%) and residential buildings (0,6%) – see Table D.

Figure 1 – Real value of recorded building plans passed by larger municipalities

Constant 2015 prices



**Table E – Buildings reported as completed to larger municipalities at current prices:
January to June 2016 versus January to June 2017**

Estimates at current prices	January to June 2016 1/	January to June 2017 1/	Difference in value between January to June 2016 and January to June 2017	% change between January to June 2016 and January to June 2017
	R'000	R'000	R'000	
Residential buildings	15 888 608	18 745 649	2 857 041	18,0
-Dwelling-houses	10 960 087	11 093 068	132 981	1,2
-Flats and townhouses	4 821 995	5 596 795	774 800	16,1
-Other residential buildings	106 526	2 055 786	1 949 260	1 829,8
Non-residential buildings	8 677 067	9 630 418	953 351	11,0
Additions and alterations	5 065 332	5 438 073	372 741	7,4
Total	29 631 007	33 814 140	4 183 133	14,1

1/ 2016 and 2017 figures should be regarded as preliminary because of possible backlogs and incomplete reporting by municipalities.

Total value of buildings reported as completed at current prices

The value of buildings reported as completed (at current prices) increased by 14,1% (R4 183,1 million) during January to June 2017 compared with January to June 2016.

The largest increase was recorded for residential buildings (18,0% or R2 857,0 million), followed by non-residential buildings (11,0% or R953,4 million) and additions and alterations (7,4% or R372,7 million) – see Table E.

**Table F – Buildings reported as completed to larger municipalities aggregated to provincial level:
January to June 2016 versus January to June 2017**

Estimates at current prices	January to June 2016 1/	January to June 2017 1/	% contribution to the total value of buildings completed during January to June 2016	% change between January to June 2016 and January to June 2017	Contribution (% points) to the % change in the value of buildings completed between January to June 2016 and January to June 2017 2/	Difference in value between January to June 2016 and January to June 2017
	R'000	R'000				R'000
Western Cape	7 505 128	9 230 889	25,3	23,0	5,8	1 725 761
Eastern Cape	650 398	884 776	2,2	36,0	0,8	234 378
Northern Cape	238 832	163 986	0,8	-31,3	-0,3	-74 846
Free State	894 467	485 394	3,0	-45,7	-1,4	-409 073
KwaZulu-Natal	5 073 328	6 314 511	17,1	24,5	4,2	1 241 183
North West	1 259 286	849 205	4,2	-32,6	-1,4	-410 081
Gauteng	12 697 689	14 902 028	42,9	17,4	7,4	2 204 339
Mpumalanga	996 109	614 970	3,4	-38,3	-1,3	-381 139
Limpopo	315 770	368 381	1,1	16,7	0,2	52 611
Total	29 631 007	33 814 140	100,0	14,1	14,1	4 183 133

1/ 2016 and 2017 figures should be regarded as preliminary because of possible backlogs and incomplete reporting by municipalities.

2/ The contribution (percentage points) is calculated by multiplying the percentage change of each province between January to June 2016 and January to June 2017 by the percentage contribution of the corresponding province to the total value of buildings completed during January to June 2016, divided by 100.

Five provinces reported year-on-year increases in the value of buildings completed during January to June 2017. The largest contributions were recorded for Gauteng (contributing 7,4 percentage points or R2 204,3 million), Western Cape (contributing 5,8 percentage points or R1 725,8 million) and KwaZulu-Natal (contributing 4,2 percentage points or R1 241,2 million) – see Table F.

Table G – Buildings reported as completed to larger municipalities at constant 2015 prices: January to June 2016 versus January to June 2017

Estimates at constant 2015 prices	January to June 2016 1/	January to June 2017 1/	Difference in value between January to June 2016 and January to June 2017	% change between January to June 2016 and January to June 2017
	R'000	R'000	R'000	
Residential buildings	15 135 661	16 839 210	1 703 549	11,3
Non-residential buildings	8 251 762	8 642 459	390 697	4,7
Additions and alterations	4 826 216	4 883 608	57 392	1,2
Total	28 213 639	30 365 277	2 151 638	7,6

1/ 2016 and 2017 figures should be regarded as preliminary because of possible backlogs and incomplete reporting by municipalities.

Real value of buildings reported as completed

The real value of buildings reported as completed (at constant 2015 prices) increased by 7,6% (R2 151,6 million) year-on-year during January to June 2017. Residential buildings rose by 11,3% (R1 703,5 million) – see Table G.

Table H – Seasonally adjusted three-monthly key figures regarding buildings reported as completed to larger municipalities at constant 2015 prices

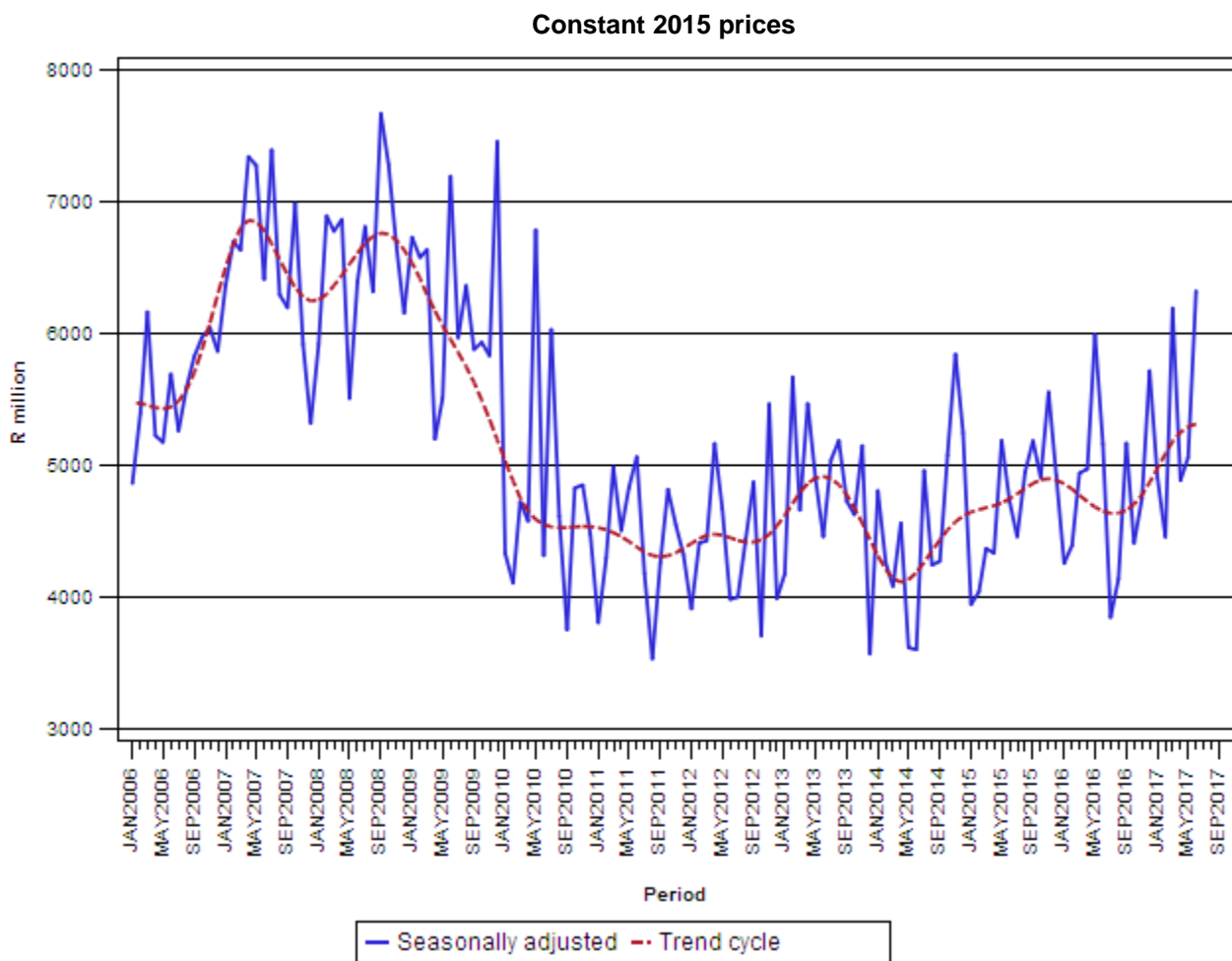
Seasonally adjusted estimates at constant 2015 prices	January to March 2017	April to June 2017	% change between January to March 2017 and April to June 2017
	R'000	R'000	
Residential buildings	9 067 380	9 256 857	2,1
Non-residential buildings 1/	4 142 701	4 499 758	8,6
Additions and alterations	2 352 072	2 518 383	7,1
Total	15 562 153	16 274 999	4,6

1/ Not seasonally adjusted because the presence of seasonality is not significant. See notes 10 and 11 on page 38.

Seasonally adjusted real value of buildings reported as completed

The seasonally adjusted real value of buildings reported as completed increased by 4,6% in the second quarter of 2017 compared with the previous quarter. All three major building categories recorded increases. The largest percentage increase was recorded for non-residential buildings (8,6%), followed by additions and alterations (7,1%) and residential buildings (2,1%) – see Table H.

Figure 2 – Real value of buildings reported as completed to larger municipalities



PJ Lehohla
Statistician-General

Table 1 – Value and percentage change of recorded building plans passed by larger municipalities at current prices by type of building

Year and month 2/		Residential buildings		Non-residential buildings		Additions and alterations		Total	
		R'000	% change 1/	R'000	% change 1/	R'000	% change 1/	R'000	% change 1/
2016	January	2 976 023	-12,8	4 542 292	560,9	1 451 533	-13,0	8 969 848	55,5
	February	4 592 411	20,1	2 310 260	76,3	2 125 304	-8,7	9 027 975	20,9
	March	4 600 728	8,1	2 515 020	17,0	2 056 047	-8,8	9 171 795	5,9
	April	5 484 971	29,6	2 837 576	46,3	2 388 049	20,6	10 710 596	31,4
	May	4 208 361	-0,2	2 167 660	-51,6	2 241 429	3,0	8 617 450	-20,7
	June	5 025 125	11,3	1 445 606	-63,9	2 415 528	9,1	8 886 259	-17,2
	July	3 762 166	-16,1	1 383 115	-33,4	2 532 825	-4,6	7 678 106	-16,7
	August	4 397 152	3,3	1 796 343	-7,2	2 291 169	-0,1	8 484 664	0,0
	September	4 802 689	2,1	2 513 194	66,5	2 707 391	20,4	10 023 274	18,5
	October	5 420 582	21,5	2 488 211	116,3	2 717 674	17,8	10 626 467	34,2
	November	4 827 911	10,5	2 823 103	100,5	2 458 564	15,0	10 109 578	27,7
	December	4 736 194	25,9	1 462 921	-27,1	1 954 313	-10,4	8 153 428	2,6
	Total	54 834 313	8,6	28 285 301	14,7	27 339 826	3,4	110 459 440	8,7
2017	January	3 161 447	6,2	1 894 083	-58,3	1 703 058	17,3	6 758 588	-24,7
	February	4 541 114	-1,1	2 214 493	-4,1	2 166 491	1,9	8 922 098	-1,2
	March	4 216 701	-8,3	1 656 336	-34,1	2 283 756	11,1	8 156 793	-11,1
	April	3 662 142	-33,2	961 614	-66,1	1 985 232	-16,9	6 608 988	-38,3
	May	4 622 961	9,9	1 983 293	-8,5	2 427 468	8,3	9 033 722	4,8
	June	4 716 334	-6,1	2 187 416	51,3	2 646 370	9,6	9 550 120	7,5

1/ The percentage change is the change in the value of recorded building plans passed by municipalities of the relevant year/month compared with the value of recorded building plans passed by municipalities of the comparable period of the previous year expressed as a percentage.

2/ Preliminary figures.

Table 2 – Seasonally adjusted value and percentage change of recorded building plans passed by larger municipalities at current prices by type of building

Year and month		Residential buildings		Non-residential buildings 3/		Additions and alterations		Total	
		R'000	% change 1/	R'000	% change 1/	R'000	% change 1/	R'000	% change 1/
2016	January	4 043 409	-10,4	4 542 292	126,4	2 092 272	-17,3	10 677 973	18,0
	February	4 700 671	16,3	2 310 260	-49,1	2 141 572	2,4	9 152 502	-14,3
	March	4 742 842	0,9	2 515 020	8,9	2 294 293	7,1	9 552 155	4,4
	April	5 442 243	14,7	2 837 576	12,8	2 359 444	2,8	10 639 263	11,4
	May	4 118 794	-24,3	2 167 660	-23,6	2 249 788	-4,6	8 536 242	-19,8
	June	4 422 321	7,4	1 445 606	-33,3	2 326 904	3,4	8 194 831	-4,0
	July	3 871 107	-12,5	1 383 115	-4,3	2 343 724	0,7	7 597 946	-7,3
	August	4 045 328	4,5	1 796 343	29,9	2 019 905	-13,8	7 861 576	3,5
	September	4 417 792	9,2	2 513 194	39,9	2 293 653	13,6	9 224 639	17,3
	October	4 869 780	10,2	2 488 211	-1,0	2 600 475	13,4	9 958 466	8,0
	November	4 468 764	-8,2	2 823 103	13,5	2 227 296	-14,4	9 519 163	-4,4
	December	5 969 850	33,6	1 462 921	-48,2	2 386 797	7,2	9 819 568	3,2
2017	January	4 285 635	-28,2	1 894 083	29,5	2 333 342	-2,2	8 513 060	-13,3
	February	4 489 001	4,7	2 214 493	16,9	2 212 341	-5,2	8 915 835	4,7
	March	3 844 488	-14,4	1 656 336	-25,2	2 232 959	0,9	7 733 783	-13,3
	April	4 166 614	8,4	961 614	-41,9	2 318 206	3,8	7 446 434	-3,7
	May	4 399 914	5,6	1 983 293	106,2	2 360 029	1,8	8 743 236	17,4
	June	4 255 846	-3,3	2 187 416	10,3	2 551 048	8,1	8 994 309	2,9
	Jan. – Mar. 17	12 619 124		5 764 912		6 778 642		25 162 678	
	Apr. – Jun. 17 2/	12 822 374	1,6	5 132 323	-11,0	7 229 283	6,6	25 183 979	0,1

1/ The percentage change is the change in the seasonally adjusted value of recorded building plans passed by municipalities of the relevant month compared with the seasonally adjusted value of recorded building plans passed by municipalities of the previous month expressed as a percentage.

2/ The percentage change is the change in the seasonally adjusted value of recorded building plans passed by municipalities for the latest three months compared with the seasonally adjusted value of recorded building plans passed by municipalities of the previous three months expressed as a percentage.

3/ Not seasonally adjusted because the presence of seasonality is not significant. See notes 10 and 11 on page 38.

Table 3 – Value and percentage change of recorded building plans passed by larger municipalities at constant 2015 prices by type of building

Year and month 2/		Residential buildings		Non-residential buildings		Additions and alterations		Total	
		R'000	% change 1/	R'000	% change 1/	R'000	% change 1/	R'000	% change 1/
2016	January	2 911 960	-15,8	4 444 513	537,6	1 420 287	-16,1	8 776 760	50,0
	February	4 403 079	13,3	2 215 014	66,3	2 037 684	-13,9	8 655 777	14,1
	March	4 398 402	2,3	2 404 417	10,7	1 965 628	-13,7	8 768 447	0,2
	April	5 203 957	22,6	2 692 197	38,4	2 265 701	14,1	10 161 855	24,3
	May	3 981 420	-5,7	2 050 766	-54,3	2 120 557	-2,6	8 152 743	-25,1
	June	4 705 173	4,5	1 353 564	-66,1	2 261 730	2,5	8 320 467	-22,2
	July	3 512 760	-21,2	1 291 424	-37,4	2 364 916	-10,3	7 169 100	-21,7
	August	4 101 821	-3,3	1 675 693	-13,2	2 137 285	-6,5	7 914 799	-6,4
	September	4 467 618	-4,8	2 337 855	55,1	2 518 503	12,2	9 323 976	10,4
	October	5 028 369	13,7	2 308 173	102,5	2 521 033	10,3	9 857 575	25,6
	November	4 441 500	2,7	2 597 151	86,3	2 261 788	6,8	9 300 439	18,7
	December	4 321 345	16,0	1 334 782	-32,8	1 783 132	-17,4	7 439 259	-5,5
	Total	51 477 404	2,0	26 705 549	8,4	25 658 244	-2,9	103 841 197	2,3
2017	January	2 874 043	-1,3	1 721 894	-61,3	1 548 235	9,0	6 144 172	-30,0
	February	4 098 478	-6,9	1 998 640	-9,8	1 955 317	-4,0	8 052 435	-7,0
	March	3 795 410	-13,7	1 490 851	-38,0	2 055 586	4,6	7 341 847	-16,3
	April	3 290 334	-36,8	863 984	-67,9	1 783 677	-21,3	5 937 995	-41,6
	May	4 116 617	3,4	1 766 067	-13,9	2 161 592	1,9	8 044 276	-1,3
	June	4 203 506	-10,7	1 949 569	44,0	2 358 619	4,3	8 511 694	2,3

1/ The percentage change is the change in the value of recorded building plans passed by municipalities of the relevant year/month compared with the value of recorded building plans passed by municipalities of the comparable period of the previous year expressed as a percentage.

2/ Preliminary figures.

Table 4 – Seasonally adjusted value and percentage change of recorded building plans passed by larger municipalities at constant 2015 prices by type of building

Year and month		Residential buildings		Non-residential buildings 3/		Additions and alterations		Total	
		R'000	% change 1/	R'000	% change 1/	R'000	% change 1/	R'000	% change 1/
2016	January	3 932 722	-11,2	4 444 513	123,8	2 035 956	-19,2	10 413 191	16,5
	February	4 505 099	14,6	2 215 014	-50,2	2 051 043	0,7	8 771 156	-15,8
	March	4 560 725	1,2	2 404 417	8,6	2 104 314	2,6	9 069 456	3,4
	April	5 179 839	13,6	2 692 197	12,0	2 237 171	6,3	10 109 208	11,5
	May	3 901 254	-24,7	2 050 766	-23,8	2 138 933	-4,4	8 090 953	-20,0
	June	4 150 596	6,4	1 353 564	-34,0	2 222 613	3,9	7 726 773	-4,5
	July	3 640 504	-12,3	1 291 424	-4,6	2 198 715	-1,1	7 130 643	-7,7
	August	3 775 749	3,7	1 675 693	29,8	1 872 814	-14,8	7 324 256	2,7
	September	4 102 814	8,7	2 337 855	39,5	2 155 621	15,1	8 596 290	17,4
	October	4 503 201	9,8	2 308 173	-1,3	2 411 184	11,9	9 222 558	7,3
	November	4 100 706	-8,9	2 597 151	12,5	2 051 957	-14,9	8 749 814	-5,1
	December	5 392 449	31,5	1 334 782	-48,6	2 181 631	6,3	8 908 862	1,8
2017	January	3 869 027	-28,3	1 721 894	29,0	2 107 184	-3,4	7 698 105	-13,6
	February	4 056 151	4,8	1 998 640	16,1	1 993 279	-5,4	8 048 070	4,5
	March	3 486 239	-14,1	1 490 851	-25,4	1 993 765	0,0	6 970 854	-13,4
	April	3 744 865	7,4	863 984	-42,0	2 051 540	2,9	6 660 389	-4,5
	May	3 927 100	4,9	1 766 067	104,4	2 095 528	2,1	7 788 695	16,9
	June	3 803 970	-3,1	1 949 569	10,4	2 300 589	9,8	8 054 128	3,4
	Jan. – Mar. 17	11 411 417		5 211 385		6 094 228		22 717 029	
	Apr. – Jun. 17 2/	11 475 935	0,6	4 579 620	-12,1	6 447 657	5,8	22 503 212	-0,9

1/ The percentage change is the change in the seasonally adjusted value of recorded building plans passed by municipalities of the relevant month compared with the seasonally adjusted value of recorded building plans passed by municipalities of the previous month expressed as a percentage.

2/ The percentage change is the change in the seasonally adjusted value of recorded building plans passed by municipalities for the latest three months compared with the seasonally adjusted value of recorded building plans passed by municipalities of the previous three months expressed as a percentage.

3/ Not seasonally adjusted because the presence of seasonality is not significant. See notes 10 and 11 on page 38.

Table 5 – Value and percentage change of buildings reported as completed to larger municipalities at current prices by type of building

Year and month 2/		Residential buildings		Non-residential buildings		Additions and alterations		Total	
		R'000	% change 1/	R'000	% change 1/	R'000	% change 1/	R'000	% change 1/
2016	January	2 208 305	21,4	578 503	-26,4	651 330	29,8	3 438 138	10,7
	February	2 459 034	17,8	1 029 861	1,0	869 860	28,7	4 358 755	15,2
	March	2 523 781	-1,7	1 810 745	110,9	878 230	-14,4	5 212 756	17,1
	April	2 316 846	-11,2	2 113 528	189,3	822 389	-8,9	5 252 763	23,8
	May	3 275 280	5,0	1 819 266	87,9	913 420	14,6	6 007 966	23,0
	June	3 105 362	19,4	1 325 164	25,4	930 103	-5,5	5 360 629	15,5
	July	2 339 251	-11,2	1 150 587	5,0	705 601	-17,2	4 195 439	-8,5
	August	2 511 205	-11,3	1 205 852	-15,1	791 833	-2,8	4 508 890	-11,0
	September	3 647 566	21,5	1 326 114	-19,5	983 917	16,6	5 957 597	8,5
	October	3 050 481	13,5	928 259	-45,2	1 022 162	33,4	5 000 902	-2,9
	November	3 026 831	-11,9	1 682 124	-14,7	1 040 884	19,4	5 749 839	-8,4
	December	4 515 140	61,4	985 304	-32,0	873 119	14,2	6 373 563	27,2
	Total	34 979 082	8,7	15 955 307	8,6	10 482 848	7,0	61 417 237	8,3
2017	January	2 359 273	6,8	1 324 149	128,9	755 314	16,0	4 438 736	29,1
	February	2 992 499	21,7	793 718	-22,9	841 521	-3,3	4 627 738	6,2
	March	3 588 297	42,2	2 469 283	36,4	1 097 139	24,9	7 154 719	37,3
	April	3 720 449	60,6	835 924	-60,4	689 072	-16,2	5 245 445	-0,1
	May	2 990 225	-8,7	1 458 694	-19,8	940 351	2,9	5 389 270	-10,3
	June	3 094 906	-0,3	2 748 650	107,4	1 114 676	19,8	6 958 232	29,8

1/ The percentage change is the change in the value of buildings reported as completed to municipalities of the relevant year/month compared with the value of buildings reported as completed to municipalities of the comparable period of the previous year expressed as a percentage.

2/ Preliminary figures.

Table 6 – Seasonally adjusted value and percentage change of buildings reported as completed to larger municipalities at current prices by type of building

Year and month		Residential buildings		Non-residential buildings 3/		Additions and alterations		Total	
		R'000	% change 1/	R'000	% change 1/	R'000	% change 1/	R'000	% change 1/
2016	January	2 932 297	10,3	578 503	-60,1	833 559	-7,3	4 344 359	-13,2
	February	2 705 072	-7,7	1 029 861	78,0	838 051	0,5	4 572 984	5,3
	March	2 495 684	-7,7	1 810 745	75,8	851 427	1,6	5 157 856	12,8
	April	2 367 454	-5,1	2 113 528	16,7	756 652	-11,1	5 237 635	1,5
	May	3 576 959	51,1	1 819 266	-13,9	922 091	21,9	6 318 316	20,6
	June	3 298 314	-7,8	1 325 164	-27,2	870 436	-5,6	5 493 914	-13,0
	July	2 258 065	-31,5	1 150 587	-13,2	715 093	-17,8	4 123 745	-24,9
	August	2 464 985	9,2	1 205 852	4,8	768 898	7,5	4 439 734	7,7
	September	3 280 622	33,1	1 326 114	10,0	946 001	23,0	5 552 737	25,1
	October	2 852 721	-13,0	928 259	-30,0	973 652	2,9	4 754 632	-14,4
	November	2 510 176	-12,0	1 682 124	81,2	1 004 522	3,2	5 196 822	9,3
	December	4 313 621	71,8	985 304	-41,4	1 016 957	1,2	6 315 882	21,5
2017	January	3 105 171	-28,0	1 324 149	34,4	960 035	-5,6	5 389 355	-14,7
	February	3 310 396	6,6	793 718	-40,1	820 236	-14,6	4 924 350	-8,6
	March	3 570 179	7,8	2 469 283	211,1	820 630	0,0	6 860 091	39,3
	April	3 763 742	5,4	835 924	-66,1	838 614	2,2	5 438 281	-20,7
	May	3 265 892	-13,2	1 458 694	74,5	937 467	11,8	5 662 053	4,1
	June	3 284 210	0,6	2 748 650	88,4	1 038 951	10,8	7 071 811	24,9
	Jan. – Mar. 17	9 985 746		4 587 150		2 600 901		17 173 796	
	Apr. – Jun. 17 2/	10 313 844	3,3	5 043 268	9,9	2 815 032	8,2	18 172 145	5,8

1/ The percentage change is the change in the seasonally adjusted value of buildings reported as completed to municipalities of the relevant month compared with the seasonally adjusted value of buildings reported as completed to municipalities of the previous month expressed as a percentage.

2/ The percentage change is the change in the seasonally adjusted value of buildings reported as completed to municipalities for the latest three months compared with the seasonally adjusted value of buildings reported as completed to municipalities of the previous three months expressed as a percentage.

3/ Not seasonally adjusted because the presence of seasonality is not significant. See notes 10 and 11 on page 38.

Table 7 – Value and percentage change of buildings reported as completed to larger municipalities at constant 2015 prices by type of building

Year and month 2/		Residential buildings		Non-residential buildings		Additions and alterations		Total	
		R'000	% change 1/	R'000	% change 1/	R'000	% change 1/	R'000	% change 1/
2016	January	2 160 768	17,1	566 050	-29,0	637 309	25,3	3 364 127	6,8
	February	2 357 655	11,1	987 403	-4,7	833 998	21,4	4 179 056	8,7
	March	2 412 793	-7,0	1 731 114	99,6	839 608	-19,0	4 983 515	10,8
	April	2 198 146	-16,0	2 005 245	173,6	780 255	-13,9	4 983 646	17,1
	May	3 098 657	-0,8	1 721 160	77,6	864 163	8,3	5 683 980	16,2
	June	2 907 642	12,2	1 240 790	17,7	870 883	-11,2	5 019 315	8,5
	July	2 184 175	-16,5	1 074 311	-1,3	658 824	-22,2	3 917 310	-13,9
	August	2 342 542	-17,0	1 124 862	-20,6	738 650	-9,0	4 206 054	-16,7
	September	3 393 085	13,3	1 233 594	-24,9	915 272	8,7	5 541 951	1,1
	October	2 829 760	6,2	861 094	-48,7	948 202	24,9	4 639 056	-9,1
	November	2 784 573	-18,2	1 547 492	-20,7	957 575	11,0	5 289 640	-14,9
	December	4 119 653	48,8	899 000	-37,3	796 641	5,2	5 815 294	17,2
	Total	32 789 449	1,9	14 992 115	2,2	9 841 380	0,5	57 622 944	1,8
2017	January	2 144 794	-0,7	1 203 772	112,7	686 649	7,7	4 035 215	19,9
	February	2 700 811	14,6	716 352	-27,5	759 495	-8,9	4 176 658	-0,1
	March	3 229 790	33,9	2 222 577	28,4	987 524	17,6	6 439 891	29,2
	April	3 342 721	52,1	751 055	-62,5	619 112	-20,7	4 712 888	-5,4
	May	2 662 711	-14,1	1 298 926	-24,5	837 356	-3,1	4 798 993	-15,6
	June	2 758 383	-5,1	2 449 777	97,4	993 472	14,1	6 201 632	23,6

1/ The percentage change is the change in the value of buildings reported as completed to municipalities of the relevant year/month compared with the value of buildings reported as completed to municipalities of the comparable period of the previous year expressed as a percentage.

2/ Preliminary figures.

Table 8 – Seasonally adjusted value and percentage change of buildings reported as completed to larger municipalities at constant 2015 prices by type of building

Year and month		Residential buildings		Non-residential buildings 3/		Additions and alterations		Total	
		R'000	% change 1/	R'000	% change 1/	R'000	% change 1/	R'000	% change 1/
2016	January	2 881 831	10,5	566 050	-60,5	811 548	-8,3	4 259 429	-13,5
	February	2 602 230	-9,7	987 403	74,4	805 297	-0,8	4 394 930	3,2
	March	2 398 621	-7,8	1 731 114	75,3	813 265	1,0	4 943 000	12,5
	April	2 248 730	-6,2	2 005 245	15,8	720 953	-11,4	4 974 928	0,6
	May	3 403 684	51,4	1 721 160	-14,2	873 402	21,1	5 998 246	20,6
	June	3 105 110	-8,8	1 240 790	-27,9	818 008	-6,3	5 163 908	-13,9
	July	2 102 874	-32,3	1 074 311	-13,4	670 866	-18,0	3 848 051	-25,5
	August	2 298 135	9,3	1 124 862	4,7	718 041	7,0	4 141 038	7,6
	September	3 058 587	33,1	1 233 594	9,7	878 832	22,4	5 171 014	24,9
	October	2 649 627	-13,4	861 094	-30,2	901 328	2,6	4 412 049	-14,7
	November	2 281 741	-13,9	1 547 492	79,7	920 124	2,1	4 749 357	7,6
	December	3 898 221	70,8	899 000	-41,9	922 593	0,3	5 719 814	20,4
2017	January	2 837 520	-27,2	1 203 772	33,9	868 648	-5,8	4 909 940	-14,2
	February	2 999 145	5,7	716 352	-40,5	742 467	-14,5	4 457 964	-9,2
	March	3 230 715	7,7	2 222 577	210,3	740 957	-0,2	6 194 249	38,9
	April	3 384 037	4,7	751 055	-66,2	753 329	1,7	4 888 421	-21,1
	May	2 927 485	-13,5	1 298 926	72,9	835 906	11,0	5 062 318	3,6
	June	2 945 335	0,6	2 449 777	88,6	929 148	11,2	6 324 260	24,9
	Jan. – Mar. 17	9 067 380		4 142 701		2 352 072		15 562 153	
	Apr. – Jun. 17 2/	9 256 857	2,1	4 499 758	8,6	2 518 383	7,1	16 274 999	4,6

1/ The percentage change is the change in the seasonally adjusted value of buildings reported as completed to municipalities of the relevant month compared with the seasonally adjusted value of buildings reported as completed to municipalities of the previous month expressed as a percentage.

2/ The percentage change is the change in the seasonally adjusted value of buildings reported as completed to municipalities for the latest three months compared with the seasonally adjusted value of buildings reported as completed to municipalities of the previous three months expressed as a percentage.

3/ Not seasonally adjusted because the presence of seasonality is not significant. See notes 10 and 11 on page 38.

Table 9 – Recorded building plans passed by larger municipalities at current prices by type of building: South Africa

			Jun. 2016	May 2017	Jun. 2017	Jan. - Jun. 2016	Jan. - Jun. 2017	% change 1/
Category of building	Type of building	Measuring unit						
Residential buildings	Dwelling-houses < 80 square metres	Number	1 134	1 805	2 933	9 129	9 973	9,2
		square metres	54 389	85 755	133 582	435 839	470 860	8,0
		R'000	252 660	439 961	493 091	1 973 944	2 271 574	15,1
	Dwelling-houses >= 80 square metres	Number	1 383	1 300	1 425	7 991	7 243	-9,4
		square metres	383 544	352 877	375 930	2 152 781	1 959 660	-9,0
		R'000	2 540 459	2 433 254	2 669 906	14 276 526	13 446 090	-5,8
	Flats and townhouses	Number	3 089	2 073	1 368	11 402	10 008	-12,2
		square metres	251 877	230 991	180 987	1 108 972	1 162 589	4,8
		R'000	2 099 240	1 715 366	1 420 197	8 708 901	8 925 913	2,5
	Other residential buildings 2/	square metres	21 523	5 082	14 331	202 940	38 306	-81,1
		R'000	132 766	34 380	133 140	1 928 248	277 122	-85,6
	Total residential buildings	R'000	5 025 125	4 622 961	4 716 334	26 887 619	24 920 699	-7,3
Non-residential buildings	Office and banking space	square metres	28 615	44 326	101 379	300 739	302 543	0,6
		R'000	247 246	416 820	946 547	2 565 428	2 767 958	7,9
	Shopping space	square metres	28 086	80 545	39 433	860 690	275 560	-68,0
		R'000	219 576	657 948	316 696	7 092 217	2 264 497	-68,1
	Industrial and warehouse space	square metres	109 905	108 538	110 788	747 656	777 423	4,0
		R'000	618 943	731 003	646 866	4 096 275	4 531 012	10,6
	Other non-residential buildings 3/	square metres	56 127	26 466	40 298	308 441	192 036	-37,7
		R'000	359 841	177 522	277 307	2 064 494	1 333 768	-35,4
	Total non-residential buildings	R'000	1 445 606	1 983 293	2 187 416	15 818 414	10 897 235	-31,1
	Additions and alterations	Dwelling-houses	square metres	261 184	268 595	275 417	1 445 917	1 416 793
R'000			1 655 030	1 880 852	1 906 799	9 315 458	9 749 089	4,7
Other buildings 4/		square metres	92 924	56 667	71 885	374 049	362 533	-3,1
		R'000	760 498	546 616	739 571	3 362 432	3 463 286	3,0
Total additions and alterations	R'000	2 415 528	2 427 468	2 646 370	12 677 890	13 212 375	4,2	
Recorded plans passed	Total at current prices	R'000	8 886 259	9 033 722	9 550 120	55 383 923	49 030 309	-11,5

1/ The percentage change between cumulative figures for 2016 and 2017.

2/ Other residential buildings include institutions for the disabled, boarding houses, hostels and tourism accommodation e.g. hotels, motels, guest-houses, holiday chalets, bed-and-breakfast accommodation and casinos.

3/ Other non-residential space includes churches, sport and recreation clubs, schools, crèches, hospitals and all other non-residential space.

4/ Other buildings include other residential buildings, non-residential buildings and internal alterations. No square metres are collected for internal alterations.

Table 10 – Recorded building plans passed by larger municipalities at current prices by type of building: Western Cape

			Jun. 2016	May 2017	Jun. 2017	Jan. - Jun. 2016	Jan. - Jun. 2017	% change 1/
Category of building	Type of building	Measuring unit						
Residential buildings	Dwelling-houses < 80 square metres	Number	348	866	662	3 610	3 705	2,6
		square metres	15 626	40 110	29 931	162 579	172 184	5,9
		R'000	91 802	245 854	178 180	893 727	1 041 329	16,5
	Dwelling-houses >= 80 square metres	Number	368	438	472	2 224	2 443	9,8
		square metres	94 069	106 337	114 534	553 763	579 144	4,6
		R'000	626 575	708 468	773 560	3 650 449	3 855 860	5,6
	Flats and townhouses	Number	834	277	254	2 745	3 365	22,6
		square metres	82 982	46 078	39 468	308 164	368 578	19,6
		R'000	627 230	347 505	297 217	2 318 463	2 787 091	20,2
	Other residential buildings 2/	square metres	10 136	3 262	840	40 779	7 804	-80,9
		R'000	63 399	22 426	6 667	312 780	52 240	-83,3
	Total residential buildings	R'000	1 409 006	1 324 253	1 255 624	7 175 419	7 736 520	7,8
Non-residential buildings	Office and banking space	square metres	7 911	8 572	36 510	36 116	99 414	175,3
		R'000	58 803	83 090	321 555	296 842	870 745	193,3
	Shopping space	square metres	509	23 105	12 430	110 697	55 261	-50,1
		R'000	3 733	179 764	108 889	905 389	449 652	-50,3
	Industrial and warehouse space	square metres	40 730	49 776	10 864	176 886	127 585	-27,9
		R'000	263 005	376 475	77 088	1 185 243	899 296	-24,1
	Other non-residential buildings 3/	square metres	12 366	14 092	11 127	72 905	39 499	-45,8
		R'000	65 914	98 749	74 310	489 371	261 144	-46,6
	Total non-residential buildings	R'000	391 455	738 078	581 842	2 876 845	2 480 837	-13,8
	Additions and alterations	Dwelling-houses	square metres	82 689	69 727	86 390	413 602	403 489
R'000			516 044	456 096	551 637	2 606 379	2 610 930	0,2
Other buildings 4/		square metres	36 954	19 197	29 213	112 791	111 601	-1,1
		R'000	311 338	231 101	335 845	1 158 881	1 237 586	6,8
Total additions and alterations		R'000	827 382	687 197	887 482	3 765 260	3 848 516	2,2
Recorded plans passed	Total at current prices	R'000	2 627 843	2 749 528	2 724 948	13 817 524	14 065 873	1,8

1/ The percentage change between cumulative figures for 2016 and 2017.

2/ Other residential buildings include institutions for the disabled, boarding houses, hostels and tourism accommodation e.g. hotels, motels, guest-houses, holiday chalets, bed-and-breakfast accommodation and casinos.

3/ Other non-residential space includes churches, sport and recreation clubs, schools, crèches, hospitals and all other non-residential space.

4/ Other buildings include other residential buildings, non-residential buildings and internal alterations. No square metres are collected for internal alterations.

Table 11 – Recorded building plans passed by larger municipalities at current prices by type of building: Eastern Cape

			Jun. 2016	May 2017	Jun. 2017	Jan. - Jun. 2016	Jan. - Jun. 2017	% change 1/
Category of building	Type of building	Measuring unit						
Residential buildings	Dwelling-houses < 80 square metres	Number	123	29	29	529	1 073	102,8
		square metres	5 387	1 637	1 933	25 296	48 635	92,3
		R'000	18 644	8 062	12 105	106 970	232 570	117,4
	Dwelling-houses >= 80 square metres	Number	80	95	137	503	507	0,8
		square metres	19 800	19 995	27 693	110 279	109 098	-1,1
		R'000	110 168	120 231	171 721	638 036	644 928	1,1
	Flats and townhouses	Number	37	22	34	553	205	-62,9
		square metres	3 240	2 592	9 094	35 574	24 408	-31,4
		R'000	17 982	14 952	53 770	194 719	137 379	-29,4
	Other residential buildings 2/	square metres	1 916	0	0	2 064	6 066	193,9
		R'000	7 664	0	0	8 626	36 010	317,5
Total residential buildings	R'000	154 458	143 245	237 596	948 351	1 050 887	10,8	
Non-residential buildings	Office and banking space	square metres	0	790	419	544	8 459	1 455,0
		R'000	0	5 320	2 894	2 501	46 883	1 774,6
	Shopping space	square metres	0	4 349	2 599	1 936	13 577	601,3
		R'000	0	21 745	17 359	9 033	73 724	716,2
	Industrial and warehouse space	square metres	7 350	2 249	30 843	62 608	85 977	37,3
		R'000	35 034	13 592	182 117	294 529	487 686	65,6
	Other non-residential buildings 3/	square metres	1 670	2 321	7 812	12 789	13 171	3,0
		R'000	7 261	11 515	42 380	54 425	70 665	29,8
	Total non-residential buildings	R'000	42 295	52 172	244 750	360 488	678 958	88,3
	Additions and alterations	Dwelling-houses	square metres	25 933	26 216	31 330	121 735	140 988
R'000			132 075	164 328	172 587	632 955	841 454	32,9
Other buildings 4/		square metres	9 328	6 156	4 222	31 664	28 428	-10,2
		R'000	39 433	36 665	33 410	136 082	177 042	30,1
Total additions and alterations	R'000	171 508	200 993	205 997	769 037	1 018 496	32,4	
Recorded plans passed	Total at current prices	R'000	368 261	396 410	688 343	2 077 876	2 748 341	32,3

1/ The percentage change between cumulative figures for 2016 and 2017.

2/ Other residential buildings include institutions for the disabled, boarding houses, hostels and tourism accommodation e.g. hotels, motels, guest-houses, holiday chalets, bed-and-breakfast accommodation and casinos.

3/ Other non-residential space includes churches, sport and recreation clubs, schools, crèches, hospitals and all other non-residential space.

4/ Other buildings include other residential buildings, non-residential buildings and internal alterations. No square metres are collected for internal alterations.

Table 12 – Recorded building plans passed by larger municipalities at current prices by type of building: Northern Cape

			Jun. 2016	May 2017	Jun. 2017	Jan. - Jun. 2016	Jan. - Jun. 2017	% change 1/
Category of building	Type of building	Measuring unit						
Residential buildings	Dwelling-houses < 80 square metres	Number	0	8	1	11	17	54,5
		square metres	0	484	62	805	999	24,1
		R'000	0	2 370	334	4 830	5 342	10,6
	Dwelling-houses >= 80 square metres	Number	24	14	14	103	78	-24,3
		square metres	3 632	5 903	3 300	19 080	16 899	-11,4
		R'000	23 728	43 342	20 989	122 493	113 958	-7,0
	Flats and townhouses	Number	0	0	0	50	0	..
		square metres	0	0	0	5 781	0	..
		R'000	0	0	0	35 135	0	..
	Other residential buildings 2/	square metres	0	0	390	0	780	..
		R'000	0	0	2 535	0	5 070	..
	Total residential buildings	R'000	23 728	45 712	23 858	162 458	124 370	-23,4
Non-residential buildings	Office and banking space	square metres	0	0	417	9 203	417	-95,5
		R'000	0	0	1 877	55 150	1 877	-96,6
	Shopping space	square metres	0	0	4 856	1 498	4 856	224,2
		R'000	0	0	31 564	7 146	31 564	341,7
	Industrial and warehouse space	square metres	2 837	4 858	1 249	8 840	8 312	-6,0
		R'000	16 080	36 921	9 492	51 840	60 746	17,2
	Other non-residential buildings 3/	square metres	0	0	0	943	658	-30,2
		R'000	0	0	0	5 308	4 278	-19,4
	Total non-residential buildings	R'000	16 080	36 921	42 933	119 444	98 465	-17,6
	Additions and alterations	Dwelling-houses	square metres	4 179	7 428	3 198	24 343	17 165
R'000			30 157	52 861	21 921	169 140	117 766	-30,4
Other buildings 4/		square metres	0	70	1 686	2 187	2 209	1,0
		R'000	2 060	635	10 857	21 793	15 277	-29,9
Total additions and alterations	R'000	32 217	53 496	32 778	190 933	133 043	-30,3	
Recorded plans passed	Total at current prices	R'000	72 025	136 129	99 569	472 835	355 878	-24,7

1/ The percentage change between cumulative figures for 2016 and 2017.

2/ Other residential buildings include institutions for the disabled, boarding houses, hostels and tourism accommodation e.g. hotels, motels, guest-houses, holiday chalets, bed-and-breakfast accommodation and casinos.

3/ Other non-residential space includes churches, sport and recreation clubs, schools, crèches, hospitals and all other non-residential space.

4/ Other buildings include other residential buildings, non-residential buildings and internal alterations. No square metres are collected for internal alterations.

Table 13 – Recorded building plans passed by larger municipalities at current prices by type of building: Free State

			Jun. 2016	May 2017	Jun. 2017	Jan. - Jun. 2016	Jan. - Jun. 2017	% change 1/
Category of building	Type of building	Measuring unit						
Residential buildings	Dwelling-houses < 80 square metres	Number	79	8	2	517	55	-89,4
		square metres	3 888	468	90	27 147	3 074	-88,7
		R'000	22 343	2 577	522	91 405	17 435	-80,9
	Dwelling-houses >= 80 square metres	Number	89	52	54	399	343	-14,0
		square metres	18 524	9 093	12 967	92 775	72 017	-22,4
		R'000	98 116	48 164	69 799	497 954	391 478	-21,4
	Flats and townhouses	Number	58	5	196	313	537	71,6
		square metres	2 855	396	18 689	35 487	66 463	87,3
		R'000	15 460	2 533	129 090	232 438	456 592	96,4
	Other residential buildings 2/	square metres	318	117	162	4 169	1 377	-67,0
		R'000	1 431	702	972	27 788	7 362	-73,5
	Total residential buildings	R'000	137 350	53 976	200 383	849 585	872 867	2,7
Non-residential buildings	Office and banking space	square metres	0	0	4 519	12 831	4 862	-62,1
		R'000	0	0	36 152	101 704	38 896	-61,8
	Shopping space	square metres	2 778	260	0	6 903	5 893	-14,6
		R'000	20 660	1 170	0	44 566	32 010	-28,2
	Industrial and warehouse space	square metres	3 188	911	2 287	26 642	22 877	-14,1
		R'000	17 918	5 283	13 265	125 910	112 668	-10,5
	Other non-residential buildings 3/	square metres	310	2 094	3 585	10 050	8 234	-18,1
		R'000	1 395	9 423	28 680	73 281	52 940	-27,8
	Total non-residential buildings	R'000	39 973	15 876	78 097	345 461	236 514	-31,5
	Additions and alterations	Dwelling-houses	square metres	12 656	9 672	8 381	70 726	67 015
R'000			65 056	48 281	45 618	366 341	353 660	-3,5
Other buildings 4/		square metres	1 529	2 127	57	7 046	15 462	119,4
		R'000	15 699	11 678	5 556	109 519	175 801	60,5
Total additions and alterations	R'000	80 755	59 959	51 174	475 860	529 461	11,3	
Recorded plans passed	Total at current prices	R'000	258 078	129 811	329 654	1 670 906	1 638 842	-1,9

1/ The percentage change between cumulative figures for 2016 and 2017.

2/ Other residential buildings include institutions for the disabled, boarding houses, hostels and tourism accommodation e.g. hotels, motels, guest-houses, holiday chalets, bed-and-breakfast accommodation and casinos.

3/ Other non-residential space includes churches, sport and recreation clubs, schools, crèches, hospitals and all other non-residential space.

4/ Other buildings include other residential buildings, non-residential buildings and internal alterations. No square metres are collected for internal alterations.

Table 14 – Recorded building plans passed by larger municipalities at current prices by type of building: KwaZulu-Natal

			Jun. 2016	May 2017	Jun. 2017	Jan. - Jun. 2016	Jan. - Jun. 2017	% change 1/
Category of building	Type of building	Measuring unit						
Residential buildings	Dwelling-houses < 80 square metres	Number	20	136	510	210	704	235,2
		square metres	1 043	5 741	20 675	10 649	29 899	180,8
		R'000	8 178	30 333	57 809	72 170	113 644	57,5
	Dwelling-houses >= 80 square metres	Number	121	112	110	701	635	-9,4
		square metres	39 849	38 088	34 497	218 816	193 592	-11,5
		R'000	333 404	369 239	327 691	1 862 349	1 804 860	-3,1
	Flats and townhouses	Number	878	100	413	2 024	1 327	-34,4
		square metres	54 449	13 403	45 341	181 881	182 630	0,4
		R'000	487 514	129 476	413 647	1 656 758	1 737 805	4,9
	Other residential buildings 2/	square metres	0	0	9 423	15 010	12 615	-16,0
		R'000	0	0	106 480	147 813	127 227	-13,9
	Total residential buildings	R'000	829 096	529 048	905 627	3 739 090	3 783 536	1,2
Non-residential buildings	Office and banking space	square metres	2 414	30 336	15 718	85 806	68 264	-20,4
		R'000	19 300	301 253	122 497	824 881	631 085	-23,5
	Shopping space	square metres	13 462	35 951	10 497	493 063	112 817	-77,1
		R'000	134 620	333 688	101 816	4 371 614	1 099 247	-74,9
	Industrial and warehouse space	square metres	15 690	16 340	24 209	100 067	112 938	12,9
		R'000	76 177	91 806	139 066	534 879	661 151	23,6
	Other non-residential buildings 3/	square metres	0	3 204	950	53 707	24 053	-55,2
		R'000	0	21 164	8 981	357 992	179 608	-49,8
	Total non-residential buildings	R'000	230 097	747 911	372 360	6 089 366	2 571 091	-57,8
	Additions and alterations	Dwelling-houses	square metres	31 627	45 445	36 478	170 884	194 831
R'000			265 456	432 783	357 368	1 457 228	1 858 270	27,5
Other buildings 4/		square metres	19 023	16 841	17 825	108 500	94 305	-13,1
		R'000	177 888	173 953	211 736	1 007 355	1 042 225	3,5
Total additions and alterations	R'000	443 344	606 736	569 104	2 464 583	2 900 495	17,7	
Recorded plans passed	Total at current prices	R'000	1 502 537	1 883 695	1 847 091	12 293 039	9 255 122	-24,7

1/ The percentage change between cumulative figures for 2016 and 2017.

2/ Other residential buildings include institutions for the disabled, boarding houses, hostels and tourism accommodation e.g. hotels, motels, guest-houses, holiday chalets, bed-and-breakfast accommodation and casinos.

3/ Other non-residential space includes churches, sport and recreation clubs, schools, crèches, hospitals and all other non-residential space.

4/ Other buildings include other residential buildings, non-residential buildings and internal alterations. No square metres are collected for internal alterations.

Table 15 – Recorded building plans passed by larger municipalities at current prices by type of building: North West

			Jun. 2016	May 2017	Jun. 2017	Jan. - Jun. 2016	Jan. - Jun. 2017	% change 1/
Category of building	Type of building	Measuring unit						
Residential buildings	Dwelling-houses < 80 square metres	Number	4	8	873	82	903	1 001,2
		square metres	220	515	39 389	4 991	41 270	726,9
		R'000	1 190	2 338	79 857	22 925	88 421	285,7
	Dwelling-houses >= 80 square metres	Number	71	70	56	453	385	-15,0
		square metres	16 654	16 002	13 854	112 186	99 151	-11,6
		R'000	91 706	88 119	71 333	573 440	524 335	-8,6
	Flats and townhouses	Number	56	270	52	550	1 338	143,3
		square metres	3 703	33 555	6 374	47 288	146 637	210,1
		R'000	20 792	200 016	39 306	250 179	874 006	249,4
	Other residential buildings 2/	square metres	607	0	0	1 325	0	..
		R'000	2 928	0	0	7 954	0	..
	Total residential buildings	R'000	116 616	290 473	190 496	854 498	1 486 762	74,0
Non-residential buildings	Office and banking space	square metres	132	668	56	6 597	1 597	-75,8
		R'000	594	4 342	224	38 204	10 173	-73,4
	Shopping space	square metres	255	5 840	3 703	19 655	12 487	-36,5
		R'000	1 275	29 200	20 165	107 856	65 437	-39,3
	Industrial and warehouse space	square metres	3 662	1 441	823	13 254	7 552	-43,0
		R'000	16 479	6 485	3 794	66 783	35 109	-47,4
	Other non-residential buildings 3/	square metres	639	257	0	6 750	1 083	-84,0
		R'000	4 473	1 078	0	35 732	4 796	-86,6
	Total non-residential buildings	R'000	22 821	41 105	24 183	248 575	115 515	-53,5
	Additions and alterations	Dwelling-houses	square metres	10 480	13 340	11 998	70 457	62 055
R'000			50 522	64 932	62 335	329 753	310 017	-6,0
Other buildings 4/		square metres	761	1 240	1 207	8 501	8 142	-4,2
		R'000	3 847	8 584	14 975	55 994	61 903	10,6
Total additions and alterations	R'000	54 369	73 516	77 310	385 747	371 920	-3,6	
Recorded plans passed	Total at current prices	R'000	193 806	405 094	291 989	1 488 820	1 974 197	32,6

1/ The percentage change between cumulative figures for 2016 and 2017.

2/ Other residential buildings include institutions for the disabled, boarding houses, hostels and tourism accommodation e.g. hotels, motels, guest-houses, holiday chalets, bed-and-breakfast accommodation and casinos.

3/ Other non-residential space includes churches, sport and recreation clubs, schools, crèches, hospitals and all other non-residential space.

4/ Other buildings include other residential buildings, non-residential buildings and internal alterations. No square metres are collected for internal alterations.

Table 16 – Recorded building plans passed by larger municipalities at current prices by type of building: Gauteng

			Jun. 2016	May 2017	Jun. 2017	Jan. - Jun. 2016	Jan. - Jun. 2017	% change 1/
Category of building	Type of building	Measuring unit						
Residential buildings	Dwelling-houses < 80 square metres	Number	503	593	824	3 451	2 868	-16,9
		square metres	25 079	29 035	39 631	167 154	141 331	-15,4
		R'000	95 969	115 427	155 671	624 063	618 951	-0,8
	Dwelling-houses >= 80 square metres	Number	425	379	431	2 562	2 063	-19,5
		square metres	138 391	121 154	125 319	797 054	674 267	-15,4
		R'000	993 297	873 626	978 982	5 679 153	4 997 721	-12,0
	Flats and townhouses	Number	1 063	1 300	369	4 899	2 986	-39,0
		square metres	89 640	117 610	57 777	466 405	342 273	-26,6
		R'000	842 011	919 426	466 450	3 867 234	2 761 950	-28,6
	Other residential buildings 2/	square metres	7 808	1 703	0	132 737	4 646	-96,5
		R'000	54 023	11 252	0	1 391 296	25 967	-98,1
	Total residential buildings	R'000	1 985 300	1 919 731	1 601 103	11 561 746	8 404 589	-27,3
Non-residential buildings	Office and banking space	square metres	17 331	1 393	43 145	117 565	103 741	-11,8
		R'000	164 827	10 765	458 373	1 074 251	1 092 535	1,7
	Shopping space	square metres	9 717	3 340	4 078	202 201	44 574	-78,0
		R'000	52 533	25 546	30 867	1 523 526	358 725	-76,5
	Industrial and warehouse space	square metres	33 318	28 500	29 495	315 420	383 524	21,6
		R'000	178 972	178 125	157 183	1 625 458	2 127 224	30,9
	Other non-residential buildings 3/	square metres	39 481	3 922	15 428	130 353	79 347	-39,1
		R'000	271 084	32 713	116 050	948 683	612 847	-35,4
	Total non-residential buildings	R'000	667 416	247 149	762 473	5 171 918	4 191 331	-19,0
	Additions and alterations	Dwelling-houses	square metres	76 071	81 178	81 149	463 847	443 417
R'000			516 188	584 101	610 224	3 231 581	3 235 448	0,1
Other buildings 4/		square metres	24 569	8 538	15 749	90 706	92 591	2,1
		R'000	199 376	66 175	99 328	773 596	642 654	-16,9
Total additions and alterations	R'000	715 564	650 276	709 552	4 005 177	3 878 102	-3,2	
Recorded plans passed	Total at current prices	R'000	3 368 280	2 817 156	3 073 128	20 738 841	16 474 022	-20,6

1/ The percentage change between cumulative figures for 2016 and 2017.

2/ Other residential buildings include institutions for the disabled, boarding houses, hostels and tourism accommodation e.g. hotels, motels, guest-houses, holiday chalets, bed-and-breakfast accommodation and casinos.

3/ Other non-residential space includes churches, sport and recreation clubs, schools, crèches, hospitals and all other non-residential space.

4/ Other buildings include other residential buildings, non-residential buildings and internal alterations. No square metres are collected for internal alterations.

Table 17 – Recorded building plans passed by larger municipalities at current prices by type of building: Mpumalanga

			Jun. 2016	May 2017	Jun. 2017	Jan. - Jun. 2016	Jan. - Jun. 2017	% change 1/
Category of building	Type of building	Measuring unit						
Residential buildings	Dwelling-houses < 80 square metres	Number	44	151	24	611	533	-12,8
		square metres	2 324	7 379	1 358	30 825	26 198	-15,0
		R'000	10 605	30 961	6 048	126 257	110 180	-12,7
	Dwelling-houses >= 80 square metres	Number	151	83	113	744	511	-31,3
		square metres	36 777	21 451	31 333	165 321	136 265	-17,6
		R'000	185 660	106 256	193 520	839 603	711 467	-15,3
	Flats and townhouses	Number	151	8	18	205	76	-62,9
		square metres	11 455	682	1 006	16 690	5 641	-66,2
		R'000	70 063	3 069	4 527	93 670	25 519	-72,8
	Other residential buildings 2/	square metres	738	0	737	5 554	2 239	-59,7
		R'000	3 321	0	3 317	25 221	10 077	-60,0
	Total residential buildings	R'000	269 649	140 286	207 412	1 084 751	857 243	-21,0
Non-residential buildings	Office and banking space	square metres	0	1 571	0	27 265	4 594	-83,2
		R'000	0	7 070	0	148 975	20 788	-86,0
	Shopping space	square metres	612	7 700	785	21 503	18 632	-13,4
		R'000	3 366	66 835	3 611	107 289	116 531	8,6
	Industrial and warehouse space	square metres	1 267	2 834	9 854	30 622	19 567	-36,1
		R'000	5 699	14 171	59 041	146 224	103 348	-29,3
	Other non-residential buildings 3/	square metres	648	0	0	16 961	9 755	-42,5
		R'000	2 927	0	0	79 086	44 334	-43,9
	Total non-residential buildings	R'000	11 992	88 076	62 652	481 574	285 001	-40,8
	Additions and alterations	Dwelling-houses	square metres	12 603	9 118	13 059	79 125	59 643
R'000			55 064	45 376	67 782	369 401	281 960	-23,7
Other buildings 4/		square metres	519	2 398	956	7 917	6 504	-17,8
		R'000	7 173	14 355	22 000	68 545	83 981	22,5
Total additions and alterations	R'000	62 237	59 731	89 782	437 946	365 941	-16,4	
Recorded plans passed	Total at current prices	R'000	343 878	288 093	359 846	2 004 271	1 508 185	-24,8

1/ The percentage change between cumulative figures for 2016 and 2017.

2/ Other residential buildings include institutions for the disabled, boarding houses, hostels and tourism accommodation e.g. hotels, motels, guest-houses, holiday chalets, bed-and-breakfast accommodation and casinos.

3/ Other non-residential space includes churches, sport and recreation clubs, schools, crèches, hospitals and all other non-residential space.

4/ Other buildings include other residential buildings, non-residential buildings and internal alterations. No square metres are collected for internal alterations.

Table 18 – Recorded building plans passed by larger municipalities at current prices by type of building: Limpopo

			Jun. 2016	May 2017	Jun. 2017	Jan. - Jun. 2016	Jan. - Jun. 2017	% change 1/
Category of building	Type of building	Measuring unit						
Residential buildings	Dwelling-houses < 80 square metres	Number	13	6	8	108	115	6,5
		square metres	822	386	513	6 393	7 270	13,7
		R'000	3 929	2 039	2 565	31 597	43 702	38,3
	Dwelling-houses >= 80 square metres	Number	54	57	38	302	278	-7,9
		square metres	15 848	14 854	12 433	83 507	79 227	-5,1
		R'000	77 805	75 809	62 311	413 049	401 483	-2,8
	Flats and townhouses	Number	12	91	32	63	174	176,2
		square metres	3 553	16 675	3 238	11 702	25 959	121,8
		R'000	18 188	98 389	16 190	60 305	145 571	141,4
	Other residential buildings 2/	square metres	0	0	2 779	1 302	2 779	113,4
		R'000	0	0	13 169	6 770	13 169	94,5
	Total residential buildings	R'000	99 922	176 237	94 235	511 721	603 925	18,0
Non-residential buildings	Office and banking space	square metres	827	996	595	4 812	11 195	132,6
		R'000	3 722	4 980	2 975	22 920	54 976	139,9
	Shopping space	square metres	753	0	485	3 234	7 463	130,8
		R'000	3 389	0	2 425	15 798	37 607	138,0
	Industrial and warehouse space	square metres	1 863	1 629	1 164	13 317	9 091	-31,7
		R'000	9 579	8 145	5 820	65 409	43 784	-33,1
	Other non-residential buildings 3/	square metres	1 013	576	1 396	3 983	16 236	307,6
		R'000	6 787	2 880	6 906	20 616	103 156	400,4
	Total non-residential buildings	R'000	23 477	16 005	18 126	124 743	239 523	92,0
	Additions and alterations	Dwelling-houses	square metres	4 946	6 471	3 434	31 198	28 190
R'000			24 468	32 094	17 327	152 680	139 584	-8,6
Other buildings 4/		square metres	241	100	970	4 737	3 291	-30,5
		R'000	3 684	3 470	5 864	30 667	26 817	-12,6
Total additions and alterations	R'000	28 152	35 564	23 191	183 347	166 401	-9,2	
Recorded plans passed	Total at current prices	R'000	151 551	227 806	135 552	819 811	1 009 849	23,2

1/ The percentage change between cumulative figures for 2016 and 2017.

2/ Other residential buildings include institutions for the disabled, boarding houses, hostels and tourism accommodation e.g. hotels, motels, guest-houses, holiday chalets, bed-and-breakfast accommodation and casinos.

3/ Other non-residential space includes churches, sport and recreation clubs, schools, crèches, hospitals and all other non-residential space.

4/ Other buildings include other residential buildings, non-residential buildings and internal alterations. No square metres are collected for internal alterations.

Table 19 – Buildings reported as completed to larger municipalities at current prices by type of building: South Africa

			Jun. 2016	May 2017	Jun. 2017	Jan. - Jun. 2016	Jan. - Jun. 2017	% change 1/	
Category of building	Type of building	Measuring unit							
Residential buildings	Dwelling-houses < 80 square metres	Number	1 249	1 536	1 662	7 259	8 127	12,0	
		square metres	61 821	72 732	78 531	352 091	386 447	9,8	
		R'000	279 623	329 172	332 800	1 450 090	1 770 225	22,1	
	Dwelling-houses >= 80 square metres	Number	1 127	914	938	6 108	4 800	-21,4	
		square metres	279 502	247 561	248 108	1 465 371	1 312 603	-10,4	
		R'000	1 814 475	1 759 473	1 791 860	9 509 997	9 322 843	-2,0	
	Flats and townhouses	Number	1 523	995	631	6 910	7 249	4,9	
		square metres	134 333	103 613	81 598	646 846	703 051	8,7	
		R'000	976 259	835 269	611 215	4 821 995	5 596 795	16,1	
	Other residential buildings 2/	square metres	4 073	9 473	44 772	16 129	213 933	1 226,4	
		R'000	35 005	66 311	359 031	106 526	2 055 786	1 829,8	
Total residential buildings		R'000	3 105 362	2 990 225	3 094 906	15 888 608	18 745 649	18,0	
Non-residential buildings	Office and banking space	square metres	62 425	50 244	50 371	319 383	328 060	2,7	
		R'000	644 692	456 201	471 149	2 667 949	2 995 716	12,3	
	Shopping space	square metres	20 042	32 637	198 738	270 005	415 905	54,0	
		R'000	140 953	240 306	1 519 706	2 296 582	3 279 673	42,8	
	Industrial and warehouse space	square metres	100 192	128 029	91 824	507 628	476 305	-6,2	
		R'000	487 461	702 834	526 170	2 661 365	2 667 861	0,2	
	Other non-residential buildings 3/	square metres	8 617	6 792	31 715	165 744	91 409	-44,8	
		R'000	52 058	59 353	231 625	1 051 171	687 168	-34,6	
	Total non-residential buildings		R'000	1 325 164	1 458 694	2 748 650	8 677 067	9 630 418	11,0
	Additions and alterations	Dwelling-houses	square metres	104 058	86 085	118 567	604 457	570 962	-5,5
R'000			626 750	562 125	734 920	3 545 616	3 546 219	0,0	
Other buildings 4/		square metres	36 738	29 150	35 838	179 772	186 512	3,7	
		R'000	303 353	378 226	379 756	1 519 716	1 891 854	24,5	
Total additions and alterations		R'000	930 103	940 351	1 114 676	5 065 332	5 438 073	7,4	
Recorded buildings completed	Total at current prices		R'000	5 360 629	5 389 270	6 958 232	29 631 007	33 814 140	14,1

1/ The percentage change between cumulative figures for 2016 and 2017.

2/ Other residential buildings include institutions for the disabled, boarding houses, hostels and tourism accommodation e.g. hotels, motels, guest-houses, holiday chalets, bed-and-breakfast accommodation and casinos.

3/ Other non-residential space includes churches, sport and recreation clubs, schools, crèches, hospitals and all other non-residential space.

4/ Other buildings include other residential buildings, non-residential buildings and internal alterations. No square metres are collected for internal alterations.

Table 20 – Buildings reported as completed to larger municipalities at current prices by type of building: Western Cape

			Jun. 2016	May 2017	Jun. 2017	Jan. - Jun. 2016	Jan. - Jun. 2017	% change 1/	
Category of building	Type of building	Measuring unit							
Residential buildings	Dwelling-houses < 80 square metres	Number	249	489	462	1 716	3 082	79,6	
		square metres	11 439	22 258	20 937	77 866	139 678	79,4	
		R'000	61 919	131 107	118 245	399 839	763 274	90,9	
	Dwelling-houses >= 80 square metres	Number	281	351	303	1 579	1 601	1,4	
		square metres	62 650	85 142	70 403	364 985	373 853	2,4	
		R'000	376 212	575 819	468 682	2 260 903	2 453 738	8,5	
	Flats and townhouses	Number	780	182	130	1 970	1 404	-28,7	
		square metres	63 293	21 438	24 690	190 550	171 047	-10,2	
		R'000	464 032	163 375	185 582	1 457 458	1 287 118	-11,7	
	Other residential buildings 2/	square metres	0	9 473	36 637	1 069	63 228	5 814,7	
		R'000	0	66 311	306 451	9 338	508 740	5 348,1	
	Total residential buildings		R'000	902 163	936 612	1 078 960	4 127 538	5 012 870	21,4
Non-residential buildings	Office and banking space	square metres	1 297	19 513	2 969	63 387	105 950	67,1	
		R'000	8 472	155 884	28 945	395 203	783 345	98,2	
	Shopping space	square metres	0	2 966	2 138	14 569	14 876	2,1	
		R'000	0	19 000	17 773	111 866	103 239	-7,7	
	Industrial and warehouse space	square metres	20 812	31 219	32 217	104 236	132 561	27,2	
		R'000	113 208	209 708	206 271	634 465	873 610	37,7	
	Other non-residential buildings 3/	square metres	1 349	1 185	6 361	54 414	25 645	-52,9	
		R'000	9 328	7 658	40 108	371 873	168 142	-54,8	
Total non-residential buildings		R'000	131 008	392 250	293 097	1 513 407	1 928 336	27,4	
Additions and alterations	Dwelling-houses	square metres	44 227	40 603	54 921	234 307	274 944	17,3	
		R'000	232 242	240 459	312 777	1 212 417	1 533 559	26,5	
	Other buildings 4/	square metres	13 279	15 367	17 756	67 216	71 792	6,8	
		R'000	118 091	167 292	150 291	651 766	756 124	16,0	
	Total additions and alterations		R'000	350 333	407 751	463 068	1 864 183	2 289 683	22,8
Recorded buildings completed	Total at current prices		R'000	1 383 504	1 736 613	1 835 125	7 505 128	9 230 889	23,0

1/ The percentage change between cumulative figures for 2016 and 2017.

2/ Other residential buildings include institutions for the disabled, boarding houses, hostels and tourism accommodation e.g. hotels, motels, guest-houses, holiday chalets, bed-and-breakfast accommodation and casinos.

3/ Other non-residential space includes churches, sport and recreation clubs, schools, crèches, hospitals and all other non-residential space.

4/ Other buildings include other residential buildings, non-residential buildings and internal alterations. No square metres are collected for internal alterations.

Table 21 – Buildings reported as completed to larger municipalities at current prices by type of building: Eastern Cape

			Jun. 2016	May 2017	Jun. 2017	Jan. - Jun. 2016	Jan. - Jun. 2017	% change 1/	
Category of building	Type of building	Measuring unit							
Residential buildings	Dwelling-houses < 80 square metres	Number	68	68	36	320	181	-43,4	
		square metres	3 253	3 462	1 878	15 963	9 812	-38,5	
		R'000	11 788	19 658	6 981	63 567	51 332	-19,2	
	Dwelling-houses >= 80 square metres	Number	51	68	67	212	299	41,0	
		square metres	10 168	12 918	9 803	44 542	60 199	35,2	
		R'000	53 894	76 513	55 701	239 350	326 753	36,5	
	Flats and townhouses	Number	17	7	8	261	68	-73,9	
		square metres	3 515	841	819	26 718	6 151	-77,0	
		R'000	17 560	4 001	4 686	143 951	35 440	-75,4	
	Other residential buildings 2/	square metres	0	0	917	1 059	4 056	283,0	
		R'000	0	0	5 245	6 884	23 020	234,4	
	Total residential buildings		R'000	83 242	100 172	72 613	453 752	436 545	-3,8
Non-residential buildings	Office and banking space	square metres	0	0	338	136	3 361	2 371,3	
		R'000	0	0	1 690	802	15 173	1 791,9	
	Shopping space	square metres	583	734	0	1 033	1 892	83,2	
		R'000	3 003	3 303	0	5 561	9 025	62,3	
	Industrial and warehouse space	square metres	0	835	6 769	3 723	13 843	271,8	
		R'000	0	3 758	34 830	15 764	69 559	341,3	
	Other non-residential buildings 3/	square metres	62	0	0	113	1 163	929,2	
		R'000	256	0	0	486	6 166	1 168,7	
	Total non-residential buildings		R'000	3 259	7 061	36 520	22 613	99 923	341,9
	Additions and alterations	Dwelling-houses	square metres	4 501	10 161	11 310	27 158	49 424	82,0
R'000			19 578	46 621	54 291	120 595	234 250	94,2	
Other buildings 4/		square metres	2 250	1 365	1 557	11 147	15 812	41,8	
		R'000	10 421	26 577	9 043	53 438	114 058	113,4	
Total additions and alterations		R'000	29 999	73 198	63 334	174 033	348 308	100,1	
Recorded buildings completed	Total at current prices		R'000	116 500	180 431	172 467	650 398	884 776	36,0

1/ The percentage change between cumulative figures for 2016 and 2017.

2/ Other residential buildings include institutions for the disabled, boarding houses, hostels and tourism accommodation e.g. hotels, motels, guest-houses, holiday chalets, bed-and-breakfast accommodation and casinos.

3/ Other non-residential space includes churches, sport and recreation clubs, schools, crèches, hospitals and all other non-residential space.

4/ Other buildings include other residential buildings, non-residential buildings and internal alterations. No square metres are collected for internal alterations.

Table 22 – Buildings reported as completed to larger municipalities at current prices by type of building: Northern Cape

			Jun. 2016	May 2017	Jun. 2017	Jan. - Jun. 2016	Jan. - Jun. 2017	% change 1/	
Category of building	Type of building	Measuring unit							
Residential buildings	Dwelling-houses < 80 square metres	Number	0	0	0	0	1	..	
		square metres	0	0	0	0	76	..	
		R'000	0	0	0	0	456	..	
	Dwelling-houses >= 80 square metres	Number	9	5	7	38	31	-18,4	
		square metres	2 265	1 164	1 849	7 428	6 950	-6,4	
		R'000	16 380	8 092	12 716	47 641	47 808	0,4	
	Flats and townhouses	Number	0	0	0	1	15	1 400,0	
		square metres	0	0	0	149	1 333	794,6	
		R'000	0	0	0	1 028	8 665	742,9	
	Other residential buildings 2/	square metres	0	0	0	158	935	491,8	
		R'000	0	0	0	948	5 512	481,4	
	Total residential buildings		R'000	16 380	8 092	12 716	49 617	62 441	25,8
Non-residential buildings	Office and banking space	square metres	0	505	879	325	2 824	768,9	
		R'000	0	3 283	3 956	1 463	15 159	936,2	
	Shopping space	square metres	0	0	0	0	120	..	
		R'000	0	0	0	0	720	..	
	Industrial and warehouse space	square metres	0	0	374	0	374	..	
		R'000	0	0	2 842	0	2 842	..	
	Other non-residential buildings 3/	square metres	0	0	0	0	0	..	
		R'000	0	0	0	0	0	..	
	Total non-residential buildings		R'000	0	3 283	6 798	1 463	18 721	1 179,6
	Additions and alterations	Dwelling-houses	square metres	4 792	2 821	1 922	22 697	8 143	-64,1
R'000			34 134	19 946	13 815	163 351	60 065	-63,2	
Other buildings 4/		square metres	0	0	560	2 885	3 078	6,7	
		R'000	1 790	90	2 932	24 401	22 759	-6,7	
Total additions and alterations		R'000	35 924	20 036	16 747	187 752	82 824	-55,9	
Recorded buildings completed	Total at current prices	R'000	52 304	31 411	36 261	238 832	163 986	-31,3	

1/ The percentage change between cumulative figures for 2016 and 2017.

2/ Other residential buildings include institutions for the disabled, boarding houses, hostels and tourism accommodation e.g. hotels, motels, guest-houses, holiday chalets, bed-and-breakfast accommodation and casinos.

3/ Other non-residential space includes churches, sport and recreation clubs, schools, crèches, hospitals and all other non-residential space.

4/ Other buildings include other residential buildings, non-residential buildings and internal alterations. No square metres are collected for internal alterations.

Table 23 – Buildings reported as completed to larger municipalities at current prices by type of building: Free State

			Jun. 2016	May 2017	Jun. 2017	Jan. - Jun. 2016	Jan. - Jun. 2017	% change 1/
Category of building	Type of building	Measuring unit						
Residential buildings	Dwelling-houses < 80 square metres	Number	17	0	19	189	77	-59,3
		square metres	881	0	1 110	10 460	4 393	-58,0
		R'000	2 769	0	2 886	26 356	19 447	-26,2
	Dwelling-houses >= 80 square metres	Number	33	13	11	169	79	-53,3
		square metres	5 643	3 421	2 162	31 050	14 425	-53,5
		R'000	30 975	20 355	11 142	158 923	79 015	-50,3
	Flats and townhouses	Number	37	26	6	1 097	396	-63,9
		square metres	5 780	2 271	543	50 677	30 278	-40,3
		R'000	40 460	11 777	2 799	259 523	206 464	-20,4
	Other residential buildings 2/	square metres	0	0	168	105	168	60,0
		R'000	0	0	756	525	756	44,0
	Total residential buildings	R'000	74 204	32 132	17 583	445 327	305 682	-31,4
Non-residential buildings	Office and banking space	square metres	0	0	0	6 066	2 573	-57,6
		R'000	0	0	0	42 462	17 649	-58,4
	Shopping space	square metres	1 990	0	133	17 608	919	-94,8
		R'000	15 920	0	665	131 102	4 655	-96,4
	Industrial and warehouse space	square metres	10 093	0	0	36 424	1 340	-96,3
		R'000	45 419	0	0	180 908	7 315	-96,0
	Other non-residential buildings 3/	square metres	0	0	0	0	0	..
		R'000	0	0	0	0	0	..
	Total non-residential buildings	R'000	61 339	0	665	354 472	29 619	-91,6
	Additions and alterations	Dwelling-houses	square metres	3 613	1 176	5 626	16 554	13 501
R'000			16 859	5 292	25 317	75 684	61 273	-19,0
Other buildings 4/		square metres	0	47	208	1 526	807	-47,1
		R'000	1 329	312	78 958	18 984	88 820	367,9
Total additions and alterations	R'000	18 188	5 604	104 275	94 668	150 093	58,5	
Recorded buildings completed	Total at current prices	R'000	153 731	37 736	122 523	894 467	485 394	-45,7

1/ The percentage change between cumulative figures for 2016 and 2017.

2/ Other residential buildings include institutions for the disabled, boarding houses, hostels and tourism accommodation e.g. hotels, motels, guest-houses, holiday chalets, bed-and-breakfast accommodation and casinos.

3/ Other non-residential space includes churches, sport and recreation clubs, schools, crèches, hospitals and all other non-residential space.

4/ Other buildings include other residential buildings, non-residential buildings and internal alterations. No square metres are collected for internal alterations.

Table 24 – Buildings reported as completed to larger municipalities at current prices by type of building: KwaZulu-Natal

			Jun. 2016	May 2017	Jun. 2017	Jan. - Jun. 2016	Jan. - Jun. 2017	% change 1/	
Category of building	Type of building	Measuring unit							
Residential buildings	Dwelling-houses < 80 square metres	Number	35	12	7	139	54	-61,2	
		square metres	2 112	704	403	8 218	3 050	-62,9	
		R'000	16 835	6 463	3 692	68 230	27 140	-60,2	
	Dwelling-houses >= 80 square metres	Number	75	75	73	373	400	7,2	
		square metres	20 098	25 597	23 559	99 299	125 962	26,9	
		R'000	169 958	234 882	244 786	818 402	1 170 119	43,0	
	Flats and townhouses	Number	55	45	67	378	724	91,5	
		square metres	7 960	12 666	12 430	65 449	85 927	31,3	
		R'000	71 637	109 060	84 292	569 142	775 339	36,2	
	Other residential buildings 2/	square metres	0	0	0	7 952	12 095	52,1	
		R'000	0	0	0	44 879	134 848	200,5	
	Total residential buildings		R'000	258 430	350 405	332 770	1 500 653	2 107 446	40,4
	Non-residential buildings	Office and banking space	square metres	2 164	22 072	0	88 770	48 345	-45,5
R'000			22 722	231 758	0	777 225	497 211	-36,0	
Shopping space		square metres	1 197	12 448	189 548	142 226	263 693	85,4	
		R'000	11 132	80 554	1 444 638	1 348 885	2 173 010	61,1	
Industrial and warehouse space		square metres	8 333	28 872	9 003	90 352	67 930	-24,8	
		R'000	48 621	164 479	50 536	463 203	384 418	-17,0	
Other non-residential buildings 3/		square metres	611	0	2 440	4 045	16 278	302,4	
		R'000	4 630	0	18 788	30 278	151 554	400,5	
Total non-residential buildings		R'000	87 105	476 791	1 513 962	2 619 591	3 206 193	22,4	
Additions and alterations		Dwelling-houses	square metres	11 962	10 500	8 168	77 599	57 271	-26,2
	R'000		102 377	104 993	82 757	693 447	568 119	-18,1	
	Other buildings 4/	square metres	8 236	5 190	5 922	36 924	38 800	5,1	
		R'000	55 567	121 868	60 719	259 637	432 753	66,7	
	Total additions and alterations		R'000	157 944	226 861	143 476	953 084	1 000 872	5,0
Recorded buildings completed	Total at current prices		R'000	503 479	1 054 057	1 990 208	5 073 328	6 314 511	24,5

1/ The percentage change between cumulative figures for 2016 and 2017.

2/ Other residential buildings include institutions for the disabled, boarding houses, hostels and tourism accommodation e.g. hotels, motels, guest-houses, holiday chalets, bed-and-breakfast accommodation and casinos.

3/ Other non-residential space includes churches, sport and recreation clubs, schools, crèches, hospitals and all other non-residential space.

4/ Other buildings include other residential buildings, non-residential buildings and internal alterations. No square metres are collected for internal alterations.

Table 25 – Buildings reported as completed to larger municipalities at current prices by type of building: North West

			Jun. 2016	May 2017	Jun. 2017	Jan. - Jun. 2016	Jan. - Jun. 2017	% change 1/	
Category of building	Type of building	Measuring unit							
Residential buildings	Dwelling-houses < 80 square metres	Number	30	65	49	287	254	-11,5	
		square metres	1 661	3 720	2 906	17 545	14 796	-15,7	
		R'000	5 690	15 641	14 422	64 037	65 585	2,4	
	Dwelling-houses >= 80 square metres	Number	121	50	71	851	333	-60,9	
		square metres	20 130	8 082	17 512	131 985	67 612	-48,8	
		R'000	77 393	38 772	93 924	605 834	350 786	-42,1	
	Flats and townhouses	Number	42	6	18	373	150	-59,8	
		square metres	3 775	413	2 734	34 715	13 091	-62,3	
		R'000	16 222	2 037	15 250	168 157	76 675	-54,4	
	Other residential buildings 2/	square metres	0	0	0	0	0	..	
		R'000	0	0	0	0	0	..	
	Total residential buildings		R'000	99 305	56 450	123 596	838 028	493 046	-41,2
Non-residential buildings	Office and banking space	square metres	0	0	5 365	5 106	6 983	36,8	
		R'000	0	0	31 886	25 248	39 978	58,3	
	Shopping space	square metres	2 693	687	1 317	11 949	18 232	52,6	
		R'000	13 709	3 435	7 105	63 506	94 049	48,1	
	Industrial and warehouse space	square metres	0	636	5 040	2 940	7 850	167,0	
		R'000	0	3 180	25 200	16 110	38 164	136,9	
	Other non-residential buildings 3/	square metres	1 397	0	0	5 544	1 191	-78,5	
		R'000	6 638	0	0	25 724	5 955	-76,9	
	Total non-residential buildings		R'000	20 347	6 615	64 191	130 588	178 146	36,4
	Additions and alterations	Dwelling-houses	square metres	2 085	720	2 639	62 378	26 447	-57,6
R'000			8 804	3 240	11 664	265 634	123 036	-53,7	
Other buildings 4/		square metres	1 171	103	5 611	5 524	8 895	61,0	
		R'000	4 868	577	37 522	25 036	54 977	119,6	
Total additions and alterations		R'000	13 672	3 817	49 186	290 670	178 013	-38,8	
Recorded buildings completed	Total at current prices		R'000	133 324	66 882	236 973	1 259 286	849 205	-32,6

1/ The percentage change between cumulative figures for 2016 and 2017.

2/ Other residential buildings include institutions for the disabled, boarding houses, hostels and tourism accommodation e.g. hotels, motels, guest-houses, holiday chalets, bed-and-breakfast accommodation and casinos.

3/ Other non-residential space includes churches, sport and recreation clubs, schools, crèches, hospitals and all other non-residential space.

4/ Other buildings include other residential buildings, non-residential buildings and internal alterations. No square metres are collected for internal alterations.

Table 26 – Buildings reported as completed to larger municipalities at current prices by type of building: Gauteng

			Jun. 2016	May 2017	Jun. 2017	Jan. - Jun. 2016	Jan. - Jun. 2017	% change 1/	
Category of building	Type of building	Measuring unit							
Residential buildings	Dwelling-houses < 80 square metres	Number	731	838	846	3 912	3 571	-8,7	
		square metres	36 270	39 484	41 244	187 021	173 766	-7,1	
		R'000	154 800	143 072	161 824	687 378	722 660	5,1	
	Dwelling-houses >= 80 square metres	Number	441	295	329	2 296	1 749	-23,8	
		square metres	132 036	96 553	106 477	649 469	587 577	-9,5	
		R'000	959 779	731 882	822 007	4 754 381	4 522 492	-4,9	
	Flats and townhouses	Number	536	637	392	2 566	4 194	63,4	
		square metres	45 883	58 553	39 389	257 972	363 383	40,9	
		R'000	346 590	509 988	313 641	2 123 336	3 056 611	44,0	
	Other residential buildings 2/	square metres	3 901	0	7 050	4 613	127 699	2 668,2	
		R'000	34 145	0	46 579	38 587	1 354 150	3 409,3	
	Total residential buildings		R'000	1 495 314	1 384 942	1 344 051	7 603 682	9 655 913	27,0
Non-residential buildings	Office and banking space	square metres	58 964	8 154	40 495	148 536	156 377	5,3	
		R'000	613 498	65 276	403 209	1 387 249	1 619 024	16,7	
	Shopping space	square metres	6 601	14 140	4 990	74 349	101 235	36,2	
		R'000	51 832	125 704	46 159	584 436	824 292	41,0	
	Industrial and warehouse space	square metres	55 823	63 784	37 853	252 400	234 662	-7,0	
		R'000	256 897	305 611	203 651	1 269 262	1 205 316	-5,0	
	Other non-residential buildings 3/	square metres	3 539	5 262	21 447	95 158	43 348	-54,4	
		R'000	23 897	49 970	165 394	593 995	336 428	-43,4	
Total non-residential buildings		R'000	946 124	546 561	818 413	3 834 942	3 985 060	3,9	
Additions and alterations	Dwelling-houses	square metres	25 240	16 243	31 349	122 236	120 361	-1,5	
		R'000	180 059	124 128	221 868	836 579	872 755	4,3	
	Other buildings 4/	square metres	11 492	5 236	4 064	43 926	43 255	-1,5	
		R'000	104 603	51 433	35 871	422 486	388 300	-8,1	
Total additions and alterations		R'000	284 662	175 561	257 739	1 259 065	1 261 055	0,2	
Recorded buildings completed	Total at current prices		R'000	2 726 100	2 107 064	2 420 203	12 697 689	14 902 028	17,4

1/ The percentage change between cumulative figures for 2016 and 2017.

2/ Other residential buildings include institutions for the disabled, boarding houses, hostels and tourism accommodation e.g. hotels, motels, guest-houses, holiday chalets, bed-and-breakfast accommodation and casinos.

3/ Other non-residential space includes churches, sport and recreation clubs, schools, crèches, hospitals and all other non-residential space.

4/ Other buildings include other residential buildings, non-residential buildings and internal alterations. No square metres are collected for internal alterations.

Table 27 – Buildings reported as completed to larger municipalities at current prices by type of building: Mpumalanga

			Jun. 2016	May 2017	Jun. 2017	Jan. - Jun. 2016	Jan. - Jun. 2017	% change 1/	
Category of building	Type of building	Measuring unit							
Residential buildings	Dwelling-houses < 80 square metres	Number	103	53	35	602	360	-40,2	
		square metres	5 260	2 415	1 553	29 388	16 608	-43,5	
		R'000	21 097	9 786	7 024	112 626	64 565	-42,7	
	Dwelling-houses >= 80 square metres	Number	85	33	58	442	189	-57,2	
		square metres	19 724	8 369	11 704	99 805	43 951	-56,0	
		R'000	99 814	41 329	59 689	448 902	212 273	-52,7	
	Flats and townhouses	Number	35	26	0	123	192	56,1	
		square metres	1 871	1 872	0	8 421	20 191	139,8	
		R'000	8 478	9 664	0	37 678	93 859	149,1	
	Other residential buildings 2/	square metres	0	0	0	1 001	0	..	
		R'000	0	0	0	4 505	0	..	
	Total residential buildings		R'000	129 389	60 779	66 713	603 711	370 697	-38,6
Non-residential buildings	Office and banking space	square metres	0	0	325	6 477	325	-95,0	
		R'000	0	0	1 463	35 441	1 463	-95,9	
	Shopping space	square metres	6 978	1 662	612	8 271	14 780	78,7	
		R'000	45 357	8 310	3 366	51 226	69 893	36,4	
	Industrial and warehouse space	square metres	5 131	2 683	0	13 665	11 964	-12,4	
		R'000	23 316	16 098	0	62 443	57 907	-7,3	
	Other non-residential buildings 3/	square metres	1 659	0	373	5 626	2 345	-58,3	
		R'000	7 309	0	1 865	24 555	11 728	-52,2	
	Total non-residential buildings		R'000	75 982	24 408	6 694	173 665	140 991	-18,8
	Additions and alterations	Dwelling-houses	square metres	7 325	3 440	2 380	37 892	19 024	-49,8
R'000			31 124	15 366	11 365	160 429	84 421	-47,4	
Other buildings 4/		square metres	220	0	0	10 394	1 700	-83,6	
		R'000	6 234	100	3 088	58 304	18 861	-67,7	
Total additions and alterations		R'000	37 358	15 466	14 453	218 733	103 282	-52,8	
Recorded buildings completed	Total at current prices		R'000	242 729	100 653	87 860	996 109	614 970	-38,3

1/ The percentage change between cumulative figures for 2016 and 2017.

2/ Other residential buildings include institutions for the disabled, boarding houses, hostels and tourism accommodation e.g. hotels, motels, guest-houses, holiday chalets, bed-and-breakfast accommodation and casinos.

3/ Other non-residential space includes churches, sport and recreation clubs, schools, crèches, hospitals and all other non-residential space.

4/ Other buildings include other residential buildings, non-residential buildings and internal alterations. No square metres are collected for internal alterations.

Table 28 – Buildings reported as completed to larger municipalities at current prices by type of building: Limpopo

			Jun. 2016	May 2017	Jun. 2017	Jan. - Jun. 2016	Jan. - Jun. 2017	% change 1/	
Category of building	Type of building	Measuring unit							
Residential buildings	Dwelling-houses < 80 square metres	Number	16	11	208	94	547	481,9	
		square metres	945	689	8 500	5 630	24 268	331,0	
		R'000	4 725	3 445	17 726	28 057	55 766	98,8	
	Dwelling-houses >= 80 square metres	Number	31	24	19	148	119	-19,6	
		square metres	6 788	6 315	4 639	36 808	32 074	-12,9	
		R'000	30 070	31 829	23 213	175 661	159 859	-9,0	
	Flats and townhouses	Number	21	66	10	141	106	-24,8	
		square metres	2 256	5 559	993	12 195	11 650	-4,5	
		R'000	11 280	25 367	4 965	61 722	56 624	-8,3	
	Other residential buildings 2/	square metres	172	0	0	172	5 752	3 244,2	
		R'000	860	0	0	860	28 760	3 244,2	
	Total residential buildings		R'000	46 935	60 641	45 904	266 300	301 009	13,0
Non-residential buildings	Office and banking space	square metres	0	0	0	580	1 322	127,9	
		R'000	0	0	0	2 856	6 714	135,1	
	Shopping space	square metres	0	0	0	0	158	..	
		R'000	0	0	0	0	790	..	
	Industrial and warehouse space	square metres	0	0	568	3 888	5 781	48,7	
		R'000	0	0	2 840	19 210	28 730	49,6	
	Other non-residential buildings 3/	square metres	0	345	1 094	844	1 439	70,5	
		R'000	0	1 725	5 470	4 260	7 195	68,9	
	Total non-residential buildings		R'000	0	1 725	8 310	26 326	43 429	65,0
	Additions and alterations	Dwelling-houses	square metres	313	421	252	3 636	1 847	-49,2
R'000			1 573	2 080	1 066	17 480	8 741	-50,0	
Other buildings 4/		square metres	90	1 842	160	230	2 373	931,7	
		R'000	450	9 977	1 332	5 664	15 202	168,4	
Total additions and alterations		R'000	2 023	12 057	2 398	23 144	23 943	3,5	
Recorded buildings completed	Total at current prices		R'000	48 958	74 423	56 612	315 770	368 381	16,7

1/ The percentage change between cumulative figures for 2016 and 2017.

2/ Other residential buildings include institutions for the disabled, boarding houses, hostels and tourism accommodation e.g. hotels, motels, guest-houses, holiday chalets, bed-and-breakfast accommodation and casinos.

3/ Other non-residential space includes churches, sport and recreation clubs, schools, crèches, hospitals and all other non-residential space.

4/ Other buildings include other residential buildings, non-residential buildings and internal alterations. No square metres are collected for internal alterations.

Explanatory notes

- | | | |
|--------------------------------------|---|---|
| Introduction | 1 | Statistics South Africa (Stats SA) conducts a monthly building statistics survey collecting information regarding building plans passed and buildings completed, financed by the private sector, from the largest local government institutions in South Africa. According to these institutions, they are not always notified about low-cost housing projects and, therefore, do not include the bulk of low-cost dwelling-houses in their reporting. Data regarding subsidised low-cost dwelling-houses can be obtained from the Department of Human Settlements. |
| | 2 | In order to improve timeliness of the publication, some information for the current month has been estimated due to late submission by respondents. These estimates will be revised in the next statistical release(s) as soon as actual information is available. |
| Purpose of the survey | 3 | The monthly survey data are used in monitoring the state of economy and formulation of economic policy. Furthermore, the results are important inputs to estimate the gross domestic product (GDP) and to calculate the Composite Leading Business Cycle Indicator. The data are extensively used by the private sector. |
| Scope of the survey | 4 | This survey covers local government institutions conducting activities for the private sector regarding - <ul style="list-style-type: none"> • passing of building plans; and • final inspection of completed buildings. |
| Classification | 5 | Building activities are classified in division 5 according to the 1993 edition of the <i>Standard Industrial Classification of all Economic Activities, (SIC) Fifth Edition, Report No. 09-90-02</i> . The SIC is based on the 1990 <i>International Standard Industrial Classification of all Economic Activities (ISIC)</i> with suitable adaptations for local conditions. |
| Collection rate | 6 | The preliminary collection rate for the survey on building statistics for June 2017 was 92,7%. The collection rate for May 2017 was 94,5%. |
| Statistical unit | 7 | The statistical unit for the collection of information is a local government institution. Local government institutions include district municipalities, metropolitan municipalities and local municipalities. |
| Survey methodology and design | 8 | Stats SA conducts a monthly survey of metropolitan municipalities and large local municipalities on building plans passed and buildings completed. An annual survey of the remaining municipalities is conducted regarding buildings completed. The monthly survey represents approximately 85 percent of the total value of buildings completed. Information regarding building plans passed and buildings completed for the private sector is collected by mail, fax and telephone. |
| Constant prices | 9 | The value of building plans passed and buildings completed at constant prices measures building activities in terms of ruling prices in a specific base year, which is currently 2015. The value of building plans passed at constant prices for each month is obtained by deflating the values at current prices with a price index known as the 'lump sum domestic buildings' as published in statistical release P0151: <i>Contract Price Adjustment Provisions (CPAP) Work Groups and Selected Materials Indices</i> . In order to be applicable, these indices (base February 1991=100) are converted to the base year 2015=100. |

- Seasonal adjustment**
- 10** Seasonally adjusted estimates of building plans passed and buildings completed are generated each month, using the X-12-ARIMA Seasonal Adjustment Program developed by US Bureau of the Census Economic Research and Analyses Division, 1968.
- 11** Seasonal adjustment is a means of removing the estimated effects of normal seasonal variation from the series so that the effects of other influences on the series can be more clearly recognised. Seasonal adjustment does not aim to remove irregular or non-seasonal influences which may be present in any particular month. Influences that are volatile or unsystematic can still make it difficult to interpret the movement of the series even after adjustment for seasonal variations. Therefore, the month-to-month movements of seasonally adjusted estimates may not be reliable indicators of trend behaviour. The X-12-ARIMA procedure for building statistics is described in more detail on the Stats SA website at [Click to download building statistics seasonal adjustment May 2017](#)
- Trend cycle**
- 12** The trend is a long-term pattern or movement of a time series. The X-12-ARIMA Seasonal Adjustment Program is used for smoothing seasonally adjusted data.
- Revised figures**
- 13** Revised figures are due to late submission of data to Stats SA, or to respondents reporting revisions or corrections to their figures. Figures for the latest two years are therefore preliminary. Data are edited at municipal level.
- 14** Once a year the annual statistical release P5041.3: *Selected building statistics of the private sector as reported by local government institutions* is published with the revised and updated information at provincial and municipal level for the previous calendar year. Due to this comprehensive revision, the monthly statistical release P5041.1 reflects provincial revision where applicable.
- Related publications**
- 15** Users may also wish to refer to the following publications:
- P5041.3: *Selected building statistics of the private sector as reported by local government institutions* issued annually.
 - P9101.2: *Actual and expected expenditure on construction by the public sector per statistical region* issued annually.
 - *Building Statistics* (Report No. 50-11-01) issued annually.
- Rounding-off of figures**
- 16** Where necessary, the figures in the tables have been rounded off to the nearest digit shown.

Symbols and abbreviations

17	..	no meaningful percentage change between two specified periods available since either one or both of the totals are nil
	0	nil or figure too small to publish
	*	revised
	Stats SA	Statistics South Africa
	SIC	Standard Industrial Classification of all Economic Activities
	ISIC	International Standard Industrial Classification of all Economic Activities

Glossary

Additions and alterations	Extensions to existing buildings as well as internal and external alterations of existing buildings.
Blocks of flats	High-density housing consisting of a number of self-contained dwelling-units, each with at least one living-room together with a kitchen and bathroom, conjoined to similar units in one building.
Dwelling-house	A free-standing, complete structure on a separate stand or a self-contained dwelling-unit, e.g. granny flat, on the same premises as an existing residence. Out-buildings and garages are included.
Local government institutions	Include – <ul style="list-style-type: none"> • District municipalities; • Metropolitan municipalities; and • Local municipalities.
Municipality	A generic term describing the “unit” of government in the local spheres responsible for local government in a geographically demarcated area and including district, metropolitan and local municipalities. It is an institution consisting of a municipal council (elected political representatives) and municipal administration (appointed officials).
District municipality	A municipality that has municipal executive and legislative authority in an area that includes more than one municipality, and which is described in section 155(1) of the Constitution as a category C municipality (refer to Local Government: Municipal Structure Act, 1998 (Act No. 117 of 1998)).
Metropolitan municipality	A municipality that has municipal executive and legislative authority in an area that includes more than one municipality, and which is described in section 155(1) of the Constitution as a category A municipality (refer to Local Government: Municipal Structure Act, 1998 (Act No. 117 of 1998)).
Local municipality	A municipality that shares municipal executive and legislative authority in its area with a district municipality within whose area it falls, which is described in section 155(1) of the constitution as a category B municipality.
Non-residential buildings	Factories and commercial, financial and other office buildings, as well as other buildings not used for residential purposes, such as churches, halls, clubs, schools and hospitals.
Other residential buildings	Institutions for the disabled, boarding houses, old people’s homes, hostels, hotels, motels, guesthouses, holiday chalets, bed-and-breakfast accommodation, entertainment centres and casinos.
Percentage change	<p>When using monthly actual values, the percentage change is the change in actual values of building activities (building plans passed or buildings completed) of the relevant month compared with the actual values of building activities (building plans passed or buildings completed) of the same month in the previous year expressed as a percentage.</p> <p>When using annual actual values, the percentage change is the change in the actual values of building activities (building plans passed or buildings completed) of the relevant year compared with the actual values of building activities (building plans passed or buildings completed) of the previous year expressed as a percentage.</p> <p>When using seasonally adjusted values, the percentage change is the change in the seasonally adjusted values of building activities (building plans passed or buildings completed) of the relevant month compared with the seasonally adjusted values of building activities (building plans passed or buildings completed) of the previous month expressed as a percentage.</p>

Reference period	One calendar month.
Residential buildings	Buildings that are used primarily as residences. Includes dwelling-houses, flats, townhouses and other residential buildings.
Townhouses	Multiple, medium-density dwelling-units including cluster housing, group housing, simplexes, duplexes, triplexes and other similar dwelling-units which are usually grouped together, with one level of each unit on ground level. This category excludes blocks of flats.

Technical enquiries

Nicolai Claassen Telephone number: (012) 310 8007
Email: nicolaic@statssa.gov.za

General information

Stats SA publishes approximately 300 different statistical releases each year. It is not economically viable to produce them in more than one of South Africa's eleven official languages. Since the releases are used extensively, not only locally but also by international economic and social-scientific communities, Stats SA releases are published in English.

Stats SA has copyright on this publication. Users may apply the information as they wish, provided that they acknowledge Stats SA as the source of the basic data wherever they process, apply, utilise, publish or distribute the data and also that they specify that the relevant application and analysis (where applicable) result from their own processing of the data.

Advance release calendar

An advance release calendar is disseminated on www.statssa.gov.za

Stats SA products

A complete set of Stats SA publications is available at the Stats SA Library and the following libraries:

National Library of South Africa, Pretoria Division
National Library of South Africa, Cape Town Division
Natal Society Library, Pietermaritzburg
Library of Parliament, Cape Town
Bloemfontein Public Library
Johannesburg Public Library
Eastern Cape Library Services, King William's Town
Central Regional Library, Polokwane
Central Reference Library, Mbombela
Central Reference Collection, Kimberley
Central Reference Library, Mmabatho

Stats SA also provides a subscription service.

Electronic services

A large range of data is available via online services. For more details about our electronic services, contact Stats SA's user information service at (012) 310 8600.

You can visit us on the Internet at: www.statssa.gov.za

General enquiries

User information services Telephone number: (012) 310 8600
Email address: info@statssa.gov.za

Postal address Private Bag X44, Pretoria, 0001

Produced by Stats SA