

STATISTICAL RELEASE
P5041.1

**Selected building statistics of the private sector
as reported by local government institutions
(Preliminary)**

July 2017

Embargoed until:
21 September 2017
13:00

ENQUIRIES:
Nicolai Claassen
Tel: (012) 310 8007

FORTHCOMING ISSUE:
August 2017

EXPECTED RELEASE DATE:
19 October 2017

www.statssa.gov.za
info@statssa.gov.za
T +27 12 310 8911
F +27 12 310 8500

Private Bag X44, Pretoria, 0001, South Africa
ISibalo House, Koch Street, Salvokop, Pretoria, 0002



Contents

Results for January to July 2017.....	3
Tables	
Table 1 Value and percentage change of recorded building plans passed by larger municipalities at current prices by type of building	9
Table 2 Seasonally adjusted value and percentage change of recorded building plans passed by larger municipalities at current prices by type of building	10
Table 3 Value and percentage change of recorded building plans passed by larger municipalities at constant 2015 prices by type of building	11
Table 4 Seasonally adjusted value and percentage change of recorded building plans passed by larger municipalities at constant 2015 prices by type of building	12
Table 5 Value and percentage change of buildings reported as completed to larger municipalities at current prices by type of building	13
Table 6 Seasonally adjusted value and percentage change of buildings reported as completed to larger municipalities at current prices by type of building	14
Table 7 Value and percentage change of buildings reported as completed to larger municipalities at constant 2015 prices by type of building	15
Table 8 Seasonally adjusted value and percentage change of buildings reported as completed to larger municipalities at constant 2015 prices by type of building	16
Table 9 Recorded building plans passed by larger municipalities at current prices by type of building: South Africa	17
Table 10 Recorded building plans passed by larger municipalities at current prices by type of building: Western Cape.....	18
Table 11 Recorded building plans passed by larger municipalities at current prices by type of building: Eastern Cape.....	19
Table 12 Recorded building plans passed by larger municipalities at current prices by type of building: Northern Cape	20
Table 13 Recorded building plans passed by larger municipalities at current prices by type of building: Free State.....	21
Table 14 Recorded building plans passed by larger municipalities at current prices by type of building: KwaZulu-Natal	22
Table 15 Recorded building plans passed by larger municipalities at current prices by type of building: North West.....	23
Table 16 Recorded building plans passed by larger municipalities at current prices by type of building: Gauteng.....	24
Table 17 Recorded building plans passed by larger municipalities at current prices by type of building: Mpumalanga.....	25
Table 18 Recorded building plans passed by larger municipalities at current prices by type of building: Limpopo.....	26
Table 19 Buildings reported as completed to larger municipalities at current prices by type of building: South Africa.....	27
Table 20 Buildings reported as completed to larger municipalities at current prices by type of building: Western Cape.....	28
Table 21 Buildings reported as completed to larger municipalities at current prices by type of building: Eastern Cape.....	29
Table 22 Buildings reported as completed to larger municipalities at current prices by type of building: Northern Cape	30
Table 23 Buildings reported as completed to larger municipalities at current prices by type of building: Free State.....	31
Table 24 Buildings reported as completed to larger municipalities at current prices by type of building: KwaZulu-Natal	32
Table 25 Buildings reported as completed to larger municipalities at current prices by type of building: North West.....	33

Table 26	Buildings reported as completed to larger municipalities at current prices by type of building: Gauteng	34
Table 27	Buildings reported as completed to larger municipalities at current prices by type of building: Mpumalanga	35
Table 28	Buildings reported as completed to larger municipalities at current prices by type of building: Limpopo	36
Explanatory notes		37
Glossary		40
Technical enquiries		41
General information		42

Results for January to July 2017

**Table A – Recorded building plans passed by larger municipalities at current prices:
January to July 2016 versus January to July 2017**

Estimates at current prices	January to July 2016 1/	January to July 2017 1/	Difference in value between January to July 2016 and January to July 2017	% change between January to July 2016 and January to July 2017
	R'000	R'000	R'000	
Residential buildings	30 649 785	30 597 380	-52 405	-0,2
-Dwelling-houses	18 992 147	18 925 596	-66 551	-0,4
-Flats and townhouses	9 726 079	11 371 383	1 645 304	16,9
-Other residential buildings	1 931 559	300 401	-1 631 158	-84,4
Non-residential buildings	17 501 557	13 615 188	-3 886 369	-22,2
Additions and alterations	15 210 715	15 836 713	625 998	4,1
Total	63 362 057	60 049 281	-3 312 776	-5,2

1/ 2016 and 2017 figures should be regarded as preliminary because of possible backlogs and incomplete reporting by municipalities.

Total value of recorded building plans passed at current prices

The value of recorded building plans passed (at current prices) decreased by 5,2% (-R3 312,8 million) during January to July 2017 compared with January to July 2016.

Non-residential buildings fell by 22,2% (-R3 886,4 million) – see Table A.

**Table B – Recorded building plans passed by larger municipalities aggregated to provincial level:
January to July 2016 versus January to July 2017**

Estimates at current prices	January to July 2016 1/	January to July 2017 1/	% contribution to the total value of building plans passed during January to July 2016	% change between January to July 2016 and January to July 2017	Contribution (% points) to the % change in the value of building plans passed between January to July 2016 and January to July 2017 2/	Difference in value between January to July 2016 and January to July 2017
	R'000	R'000				R'000
Western Cape	16 172 302	17 194 261	25,5	6,3	1,6	1 021 959
Eastern Cape	2 490 576	3 530 162	3,9	41,7	1,6	1 039 586
Northern Cape	710 183	428 983	1,1	-39,6	-0,4	-281 200
Free State	1 992 186	1 852 080	3,1	-7,0	-0,2	-140 106
KwaZulu-Natal	13 676 671	11 744 125	21,6	-14,1	-3,1	-1 932 546
North West	1 719 002	2 158 324	2,7	25,6	0,7	439 322
Gauteng	23 247 210	20 217 174	36,7	-13,0	-4,8	-3 030 036
Mpumalanga	2 373 626	1 758 478	3,7	-25,9	-1,0	-615 148
Limpopo	980 301	1 165 694	1,5	18,9	0,3	185 393
Total	63 362 057	60 049 281	100,0	-5,2	-5,2	-3 312 776

1/ 2016 and 2017 figures should be regarded as preliminary because of possible backlogs and incomplete reporting by municipalities.

2/ The contribution (percentage points) is calculated by multiplying the percentage change of each province between January to July 2016 and January to July 2017 by the percentage contribution of the corresponding province to the total value of building plans passed during January to July 2016, divided by 100.

The largest negative contributions to the total decrease of 5,2% (-R3 312,8 million) were made by Gauteng (contributing -4,8 percentage points or -R3 030,0 million) and KwaZulu-Natal (contributing -3,1 percentage points or -R1 932,5 million) – see Table B.

Table C – Recorded building plans passed by larger municipalities at constant 2015 prices: January to July 2016 versus January to July 2017

Estimates at constant 2015 prices	January to July 2016 1/	January to July 2017 1/	Difference in value between January to July 2016 and January to July 2017	% change between January to July 2016 and January to July 2017
	R'000	R'000	R'000	
Residential buildings	29 116 751	27 454 360	-1 662 391	-5,7
Non-residential buildings	16 739 554	12 221 230	-4 518 324	-27,0
Additions and alterations	14 436 503	14 210 396	-226 107	-1,6
Total	60 292 808	53 885 986	-6 406 822	-10,6

1/ 2016 and 2017 figures should be regarded as preliminary because of possible backlogs and incomplete reporting by municipalities.

Real value of recorded building plans passed

The real value of recorded building plans passed (at constant 2015 prices) decreased by 10,6% (-R6 406,8 million) year-on-year during January to July 2017. All three major building categories recorded decreases. The largest percentage decrease was recorded for non-residential buildings (-27,0% or -R4 518,3 million), followed by residential buildings (-5,7% or -R1 662,4 million) and additions and alterations (-1,6% or -R226,1 million) – see Table C.

Table D – Seasonally adjusted three-monthly key figures regarding recorded building plans passed by larger municipalities at constant 2015 prices

Seasonally adjusted estimates at constant 2015 prices	February to April 2017	May to July 2017	% change between February to April 2017 and May to July 2017
	R'000	R'000	
Residential buildings	11 395 339	12 927 891	13,4
Non-residential buildings 1/	4 353 475	6 145 861	41,2
Additions and alterations	6 044 296	6 559 668	8,5
Total	21 793 110	25 633 420	17,6

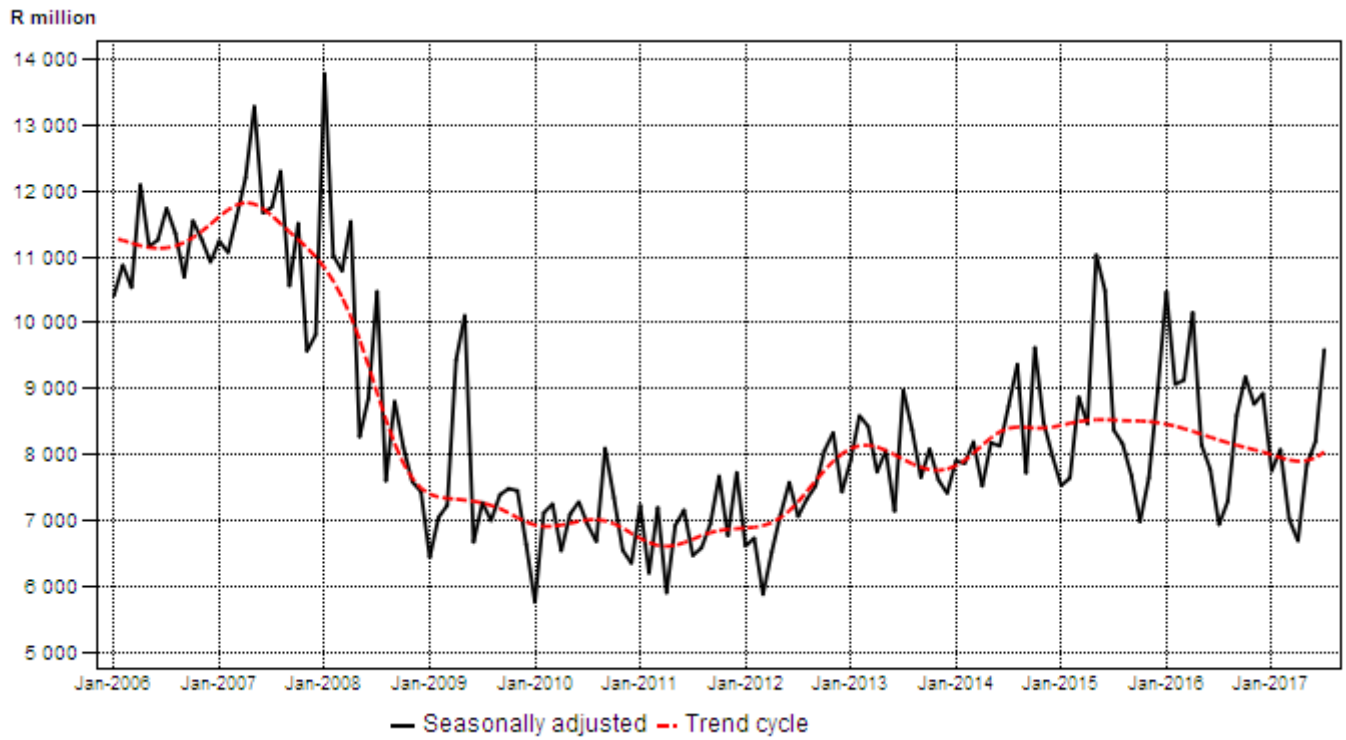
1/ Not seasonally adjusted because the presence of seasonality is not significant. See notes 10 and 11 on page 38.

Seasonally adjusted real value of recorded building plans passed

The seasonally adjusted real value of recorded building plans passed increased by 17,6% in the three months ended July 2017 compared with the previous three months. Increases were recorded for non-residential buildings (41,2%), residential buildings (13,4%) and additions and alterations (8,5%) – see Table D.

Figure 1 – Real value of recorded building plans passed by larger municipalities

Constant 2015 prices



**Table E – Buildings reported as completed to larger municipalities at current prices:
January to July 2016 versus January to July 2017**

Estimates at current prices	January to July 2016	January to July 2017	Difference in value between January to July 2016 and January to July 2017	% change between January to July 2016 and January to July 2017
	1/	1/		
	R'000	R'000	R'000	
Residential buildings	18 227 859	21 623 981	3 396 122	18,6
-Dwelling-houses	12 753 115	12 928 468	175 353	1,4
-Flats and townhouses	5 317 731	6 606 092	1 288 361	24,2
-Other residential buildings	157 013	2 089 421	1 932 408	1 230,7
Non-residential buildings	9 827 654	11 098 924	1 271 270	12,9
Additions and alterations	5 770 933	6 323 407	552 474	9,6
Total	33 826 446	39 046 312	5 219 866	15,4

1/ 2016 and 2017 figures should be regarded as preliminary because of possible backlogs and incomplete reporting by municipalities.

Total value of buildings reported as completed at current prices

The value of buildings reported as completed (at current prices) increased by 15,4% (R5 219,9 million) during January to July 2017 compared with January to July 2016.

The largest increase was recorded for residential buildings (18,6% or R3 396,1 million), followed by non-residential buildings (12,9% or R1 271,3 million) and additions and alterations (9,6% or R552,5 million) – see Table E.

**Table F – Buildings reported as completed to larger municipalities aggregated to provincial level:
January to July 2016 versus January to July 2017**

Estimates at current prices	January to July 2016	January to July 2017	% contribution to the total value of buildings completed during January to July 2016	% change between January to July 2016 and January to July 2017	Contribution (% points) to the % change in the value of buildings completed between January to July 2016 and January to July 2017	Difference in value between January to July 2016 and January to July 2017
	1/	1/				
	R'000	R'000				
Western Cape	8 640 976	10 890 144	25,5	26,0	6,6	2 249 168
Eastern Cape	745 034	1 048 217	2,2	40,7	0,9	303 183
Northern Cape	286 934	325 240	0,8	13,4	0,1	38 306
Free State	1 041 904	567 065	3,1	-45,6	-1,4	-474 839
KwaZulu-Natal	5 832 252	7 093 805	17,2	21,6	3,7	1 261 553
North West	1 344 224	956 558	4,0	-28,8	-1,1	-387 666
Gauteng	14 377 059	16 950 086	42,5	17,9	7,6	2 573 027
Mpumalanga	1 192 085	693 724	3,5	-41,8	-1,5	-498 361
Limpopo	365 978	521 473	1,1	42,5	0,5	155 495
Total	33 826 446	39 046 312	100,0	15,4	15,4	5 219 866

1/ 2016 and 2017 figures should be regarded as preliminary because of possible backlogs and incomplete reporting by municipalities.

2/ The contribution (percentage points) is calculated by multiplying the percentage change of each province between January to July 2016 and January to July 2017 by the percentage contribution of the corresponding province to the total value of buildings completed during January to July 2016, divided by 100.

Six provinces reported year-on-year increases in the value of buildings completed during January to July 2017. The largest contributions were recorded for Gauteng (contributing 7,6 percentage points or R2 573,0 million), Western Cape (contributing 6,6 percentage points or R2 249,2 million) and KwaZulu-Natal (contributing 3,7 percentage points or R1 261,6 million) – see Table F.

Table G – Buildings reported as completed to larger municipalities at constant 2015 prices: January to July 2016 versus January to July 2017

Estimates at constant 2015 prices	January to July 2016	January to July 2017	Difference in value between January to July 2016 and January to July 2017	% change between January to July 2016 and January to July 2017
	1/	1/		
	R'000	R'000	R'000	
Residential buildings	17 319 836	19 414 075	2 094 239	12,1
Non-residential buildings	9 326 073	9 958 000	631 927	6,8
Additions and alterations	5 485 040	5 675 859	190 819	3,5
Total	32 130 949	35 047 934	2 916 985	9,1

1/ 2016 and 2017 figures should be regarded as preliminary because of possible backlogs and incomplete reporting by municipalities.

Real value of buildings reported as completed

The real value of buildings reported as completed (at constant 2015 prices) increased by 9,1% (R2 917,0 million) year-on-year during January to July 2017. The largest increase was recorded for residential buildings (12,1% or R2 094,2 million), followed by non-residential buildings (6,8% or R631,9 million) and additions and alterations (3,5% or R190,8 million) – see Table G.

Table H – Seasonally adjusted three-monthly key figures regarding buildings reported as completed to larger municipalities at constant 2015 prices

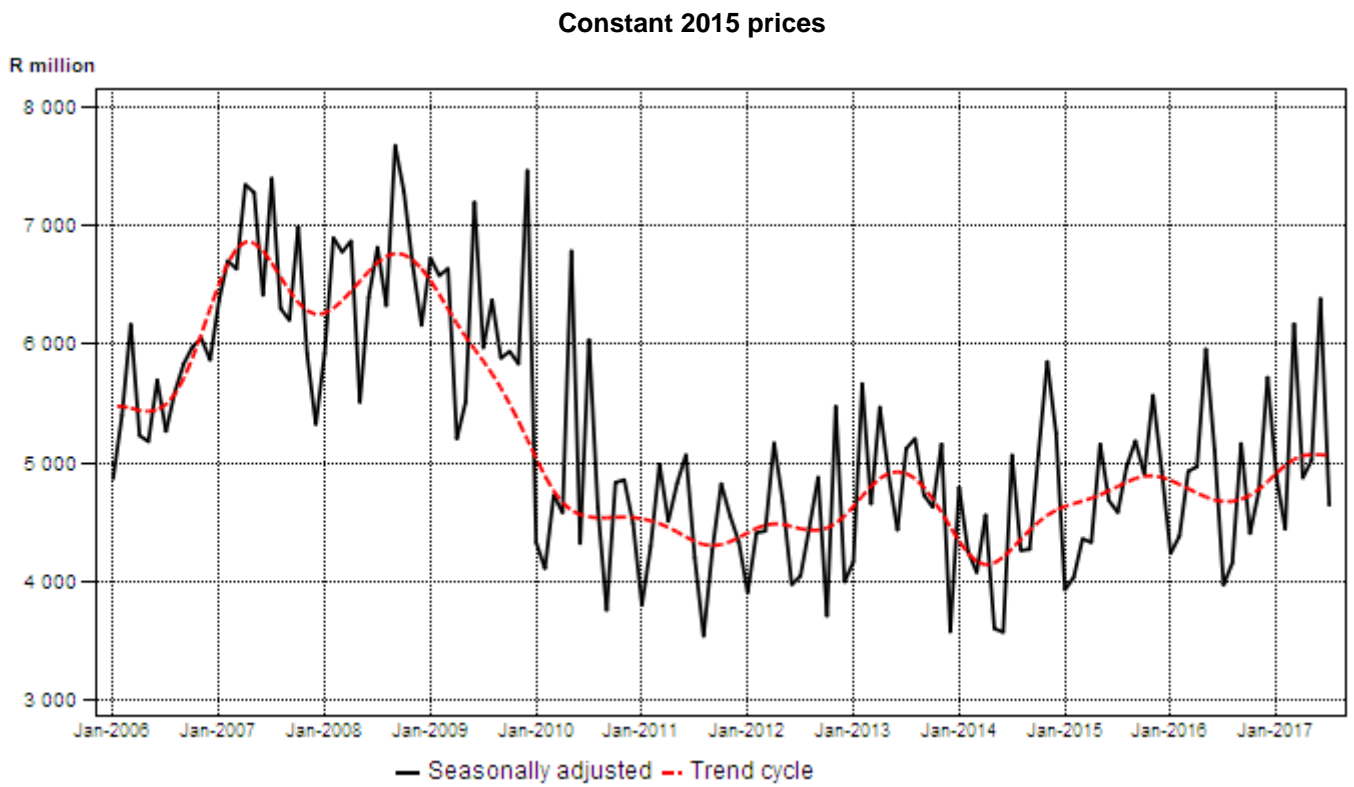
Seasonally adjusted estimates at constant 2015 prices	February to April 2017	May to July 2017	% change between February to April 2017 and May to July 2017
	R'000	R'000	
Residential buildings	9 557 244	8 406 128	-12,0
Non-residential buildings 1/	3 689 984	5 064 244	37,2
Additions and alterations	2 233 488	2 577 259	15,4
Total	15 480 717	16 047 631	3,7

1/ Not seasonally adjusted because the presence of seasonality is not significant. See notes 10 and 11 on page 38.

Seasonally adjusted real value of buildings reported as completed

The seasonally adjusted real value of buildings reported as completed increased by 3,7% in the three months ended July 2017 compared with the previous three months. Increases were recorded for non-residential buildings (37,2%) and additions and alterations (15,4%). A decrease was recorded for residential buildings (-12,0%) – see Table H.

Figure 2 – Real value of buildings reported as completed to larger municipalities



**PJ Lehohla
Statistician-General**

Table 1 – Value and percentage change of recorded building plans passed by larger municipalities at current prices by type of building

Year and month 2/		Residential buildings		Non-residential buildings		Additions and alterations		Total	
		R'000	% change 1/	R'000	% change 1/	R'000	% change 1/	R'000	% change 1/
2016	January	2 976 023	-12,8	4 542 292	560,9	1 451 533	-13,0	8 969 848	55,5
	February	4 592 411	20,1	2 610 288	99,2	2 125 304	-8,7	9 328 003	25,0
	March	4 600 728	8,1	2 515 020	17,0	2 056 047	-8,8	9 171 795	5,9
	April	5 484 971	29,6	2 837 576	46,3	2 388 049	20,6	10 710 596	31,4
	May	4 208 361	-0,2	2 167 660	-51,6	2 241 429	3,0	8 617 450	-20,7
	June	5 025 125	11,3	1 445 606	-63,9	2 415 528	9,1	8 886 259	-17,2
	July	3 762 166	-16,1	1 383 115	-33,4	2 532 825	-4,6	7 678 106	-16,7
	August	4 397 152	3,3	1 796 343	-7,2	2 291 169	-0,1	8 484 664	0,0
	September	4 802 689	2,1	2 513 194	66,5	2 707 391	20,4	10 023 274	18,5
	October	5 420 582	21,5	2 488 211	116,3	2 717 674	17,8	10 626 467	34,2
	November	4 827 911	10,5	2 823 103	100,5	2 458 564	15,0	10 109 578	27,7
	December	4 736 194	25,9	1 462 921	-27,1	1 954 313	-10,4	8 153 428	2,6
	Total	54 834 313	8,6	28 585 329	16,0	27 339 826	3,4	110 759 468	9,0
2017	January	3 161 447	6,2	1 894 083	-58,3	1 703 058	17,3	6 758 588	-24,7
	February	4 541 114	-1,1	2 214 493	-15,2	2 166 491	1,9	8 922 098	-4,4
	March	4 216 701	-8,3	1 656 336	-34,1	2 283 756	11,1	8 156 793	-11,1
	April	3 662 142	-33,2	961 614	-66,1	1 985 232	-16,9	6 608 988	-38,3
	May	4 622 961	9,9	1 983 293	-8,5	2 427 468	8,3	9 033 722	4,8
	June	4 773 162	-5,0	2 191 120	51,6	2 634 789	9,1	9 599 071	8,0
	July	5 619 853	49,4	2 714 249	96,2	2 635 919	4,1	10 970 021	42,9

1/ The percentage change is the change in the value of recorded building plans passed by municipalities of the relevant year/month compared with the value of recorded building plans passed by municipalities of the comparable period of the previous year expressed as a percentage.

2/ Preliminary figures.

Table 2 – Seasonally adjusted value and percentage change of recorded building plans passed by larger municipalities at current prices by type of building

Year and month		Residential buildings		Non-residential buildings 3/		Additions and alterations		Total	
		R'000	% change 1/	R'000	% change 1/	R'000	% change 1/	R'000	% change 1/
2016	January	4 066 087	-10,2	4 542 292	126,4	2 091 681	-17,3	10 700 060	18,1
	February	4 705 120	15,7	2 610 288	-42,5	2 140 841	2,4	9 456 249	-11,6
	March	4 830 156	2,7	2 515 020	-3,6	2 293 285	7,1	9 638 461	1,9
	April	5 485 288	13,6	2 837 576	12,8	2 357 808	2,8	10 680 672	10,8
	May	4 176 450	-23,9	2 167 660	-23,6	2 248 978	-4,6	8 593 089	-19,5
	June	4 472 857	7,1	1 445 606	-33,3	2 343 243	4,2	8 261 706	-3,9
	July	3 698 658	-17,3	1 383 115	-4,3	2 336 756	-0,3	7 418 529	-10,2
	August	4 012 993	8,5	1 796 343	29,9	2 017 712	-13,7	7 827 047	5,5
	September	4 414 143	10,0	2 513 194	39,9	2 293 184	13,7	9 220 521	17,8
	October	4 833 850	9,5	2 488 211	-1,0	2 598 374	13,3	9 920 434	7,6
	November	4 479 379	-7,3	2 823 103	13,5	2 227 811	-14,3	9 530 293	-3,9
	December	5 973 943	33,4	1 462 921	-48,2	2 386 839	7,1	9 823 704	3,1
2017	January	4 317 517	-27,7	1 894 083	29,5	2 333 154	-2,2	8 544 754	-13,0
	February	4 514 264	4,6	2 214 493	16,9	2 211 907	-5,2	8 940 664	4,6
	March	3 922 183	-13,1	1 656 336	-25,2	2 232 271	0,9	7 810 790	-12,6
	April	4 194 191	6,9	961 614	-41,9	2 316 779	3,8	7 472 584	-4,3
	May	4 458 298	6,3	1 983 293	106,2	2 359 343	1,8	8 800 934	17,8
	June	4 403 048	-1,2	2 191 120	10,5	2 561 796	8,6	9 155 964	4,0
	July	5 596 303	27,1	2 714 249	23,9	2 409 160	-6,0	10 719 713	17,1
	Feb. – Apr. 17	12 630 638		4 832 443		6 760 957		24 224 038	
	May – Jul. 17 2/	14 457 649	14,5	6 888 662	42,6	7 330 299	8,4	28 676 611	18,4

1/ The percentage change is the change in the seasonally adjusted value of recorded building plans passed by municipalities of the relevant month compared with the seasonally adjusted value of recorded building plans passed by municipalities of the previous month expressed as a percentage.

2/ The percentage change is the change in the seasonally adjusted value of recorded building plans passed by municipalities for the latest three months compared with the seasonally adjusted value of recorded building plans passed by municipalities of the previous three months expressed as a percentage.

3/ Not seasonally adjusted because the presence of seasonality is not significant. See notes 10 and 11 on page 38.

Table 3 – Value and percentage change of recorded building plans passed by larger municipalities at constant 2015 prices by type of building

Year and month 2/		Residential buildings		Non-residential buildings		Additions and alterations		Total	
		R'000	% change 1/	R'000	% change 1/	R'000	% change 1/	R'000	% change 1/
2016	January	2 911 960	-15,8	4 444 513	537,6	1 420 287	-16,1	8 776 760	50,0
	February	4 403 079	13,3	2 502 673	87,9	2 037 684	-13,9	8 943 436	17,9
	March	4 398 402	2,3	2 404 417	10,7	1 965 628	-13,7	8 768 447	0,2
	April	5 203 957	22,6	2 692 197	38,4	2 265 701	14,1	10 161 855	24,3
	May	3 981 420	-5,7	2 050 766	-54,3	2 120 557	-2,6	8 152 743	-25,1
	June	4 705 173	4,5	1 353 564	-66,1	2 261 730	2,5	8 320 467	-22,2
	July	3 512 760	-21,2	1 291 424	-37,4	2 364 916	-10,3	7 169 100	-21,7
	August	4 101 821	-3,3	1 675 693	-13,2	2 137 285	-6,5	7 914 799	-6,4
	September	4 467 618	-4,8	2 337 855	55,1	2 518 503	12,2	9 323 976	10,4
	October	5 028 369	13,7	2 308 173	102,5	2 521 033	10,3	9 857 575	25,6
	November	4 441 500	2,7	2 597 151	86,3	2 261 788	6,8	9 300 439	18,7
	December	4 321 345	16,0	1 334 782	-32,8	1 783 132	-17,4	7 439 259	-5,5
	Total	51 477 404	2,0	26 993 208	9,6	25 658 244	-2,9	104 128 856	2,5
2017	January	2 874 043	-1,3	1 721 894	-61,3	1 548 235	9,0	6 144 172	-30,0
	February	4 098 478	-6,9	1 998 640	-20,1	1 955 317	-4,0	8 052 435	-10,0
	March	3 795 410	-13,7	1 490 851	-38,0	2 055 586	4,6	7 341 847	-16,3
	April	3 290 334	-36,8	863 984	-67,9	1 783 677	-21,3	5 937 995	-41,6
	May	4 116 617	3,4	1 766 067	-13,9	2 161 592	1,9	8 044 276	-1,3
	June	4 261 752	-9,4	1 956 357	44,5	2 352 490	4,0	8 570 599	3,0
	July	5 017 726	42,8	2 423 437	87,7	2 353 499	-0,5	9 794 662	36,6

1/ The percentage change is the change in the value of recorded building plans passed by municipalities of the relevant year/month compared with the value of recorded building plans passed by municipalities of the comparable period of the previous year expressed as a percentage.

2/ Preliminary figures.

Table 4 – Seasonally adjusted value and percentage change of recorded building plans passed by larger municipalities at constant 2015 prices by type of building

Year and month		Residential buildings		Non-residential buildings 3/		Additions and alterations		Total	
		R'000	% change 1/	R'000	% change 1/	R'000	% change 1/	R'000	% change 1/
2016	January	3 983 118	-10,6	4 444 513	123,8	2 037 629	-19,2	10 465 261	16,8
	February	4 512 191	13,3	2 502 673	-43,7	2 052 578	0,7	9 067 442	-13,4
	March	4 620 177	2,4	2 404 417	-3,9	2 105 962	2,6	9 130 556	0,7
	April	5 227 128	13,1	2 692 197	12,0	2 238 494	6,3	10 157 819	11,3
	May	3 959 166	-24,3	2 050 766	-23,8	2 140 703	-4,4	8 150 635	-19,8
	June	4 199 295	6,1	1 353 564	-34,0	2 225 404	4,0	7 778 263	-4,6
	July	3 463 597	-17,5	1 291 424	-4,6	2 186 628	-1,7	6 941 649	-10,8
	August	3 746 555	8,2	1 675 693	29,8	1 872 470	-14,4	7 294 718	5,1
	September	4 101 614	9,5	2 337 855	39,5	2 155 450	15,1	8 594 919	17,8
	October	4 461 238	8,8	2 308 173	-1,3	2 410 806	11,8	9 180 217	6,8
	November	4 115 554	-7,7	2 597 151	12,5	2 053 310	-14,8	8 766 015	-4,5
	December	5 408 447	31,4	1 334 782	-48,6	2 184 098	6,4	8 927 327	1,8
2017	January	3 923 046	-27,5	1 721 894	29,0	2 109 793	-3,4	7 754 733	-13,1
	February	4 084 202	4,1	1 998 640	16,1	1 995 606	-5,4	8 078 448	4,2
	March	3 535 420	-13,4	1 490 851	-25,4	1 995 541	0,0	7 021 812	-13,1
	April	3 775 717	6,8	863 984	-42,0	2 053 149	2,9	6 692 850	-4,7
	May	3 980 987	5,4	1 766 067	104,4	2 097 651	2,2	7 844 705	17,2
	June	3 943 757	-0,9	1 956 357	10,8	2 299 727	9,6	8 199 841	4,5
	July	5 003 147	26,9	2 423 437	23,9	2 162 290	-6,0	9 588 874	16,9
	Feb. – Apr. 17	11 395 339		4 353 475		6 044 296		21 793 110	
	May – Jul. 17 2/	12 927 891	13,4	6 145 861	41,2	6 559 668	8,5	25 633 420	17,6

1/ The percentage change is the change in the seasonally adjusted value of recorded building plans passed by municipalities of the relevant month compared with the seasonally adjusted value of recorded building plans passed by municipalities of the previous month expressed as a percentage.

2/ The percentage change is the change in the seasonally adjusted value of recorded building plans passed by municipalities for the latest three months compared with the seasonally adjusted value of recorded building plans passed by municipalities of the previous three months expressed as a percentage.

3/ Not seasonally adjusted because the presence of seasonality is not significant. See notes 10 and 11 on page 38.

Table 5 – Value and percentage change of buildings reported as completed to larger municipalities at current prices by type of building

Year and month 2/		Residential buildings		Non-residential buildings		Additions and alterations		Total	
		R'000	% change 1/	R'000	% change 1/	R'000	% change 1/	R'000	% change 1/
2016	January	2 208 305	21,4	578 503	-26,4	651 330	29,8	3 438 138	10,7
	February	2 459 034	17,8	1 029 861	1,0	869 860	28,7	4 358 755	15,2
	March	2 523 781	-1,7	1 810 745	110,9	878 230	-14,4	5 212 756	17,1
	April	2 316 846	-11,2	2 113 528	189,3	822 389	-8,9	5 252 763	23,8
	May	3 275 280	5,0	1 819 266	87,9	913 420	14,6	6 007 966	23,0
	June	3 105 362	19,4	1 325 164	25,4	930 103	-5,5	5 360 629	15,5
	July	2 339 251	-11,2	1 150 587	5,0	705 601	-17,2	4 195 439	-8,5
	August	2 511 205	-11,3	1 205 852	-15,1	791 833	-2,8	4 508 890	-11,0
	September	3 647 566	21,5	1 326 114	-19,5	983 917	16,6	5 957 597	8,5
	October	3 050 481	13,5	928 259	-45,2	1 022 162	33,4	5 000 902	-2,9
	November	3 026 831	-11,9	1 682 124	-14,7	1 040 884	19,4	5 749 839	-8,4
	December	4 515 140	61,4	985 304	-32,0	873 119	14,2	6 373 563	27,2
	Total	34 979 082	8,7	15 955 307	8,6	10 482 848	7,0	61 417 237	8,3
2017	January	2 359 273	6,8	1 324 149	128,9	755 314	16,0	4 438 736	29,1
	February	2 992 499	21,7	793 718	-22,9	841 521	-3,3	4 627 738	6,2
	March	3 588 297	42,2	2 469 283	36,4	1 097 139	24,9	7 154 719	37,3
	April	3 720 449	60,6	835 924	-60,4	689 072	-16,2	5 245 445	-0,1
	May	2 990 225	-8,7	1 458 694	-19,8	940 351	2,9	5 389 270	-10,3
	June	3 176 835	2,3	2 798 225	111,2	1 120 604	20,5	7 095 664	32,4
	July	2 796 403	19,5	1 418 931	23,3	879 406	24,6	5 094 740	21,4

1/ The percentage change is the change in the value of buildings reported as completed to municipalities of the relevant year/month compared with the value of buildings reported as completed to municipalities of the comparable period of the previous year expressed as a percentage.

2/ Preliminary figures.

Table 6 – Seasonally adjusted value and percentage change of buildings reported as completed to larger municipalities at current prices by type of building

Year and month		Residential buildings		Non-residential buildings 3/		Additions and alterations		Total	
		R'000	% change 1/	R'000	% change 1/	R'000	% change 1/	R'000	% change 1/
2016	January	2 929 132	10,4	578 503	-60,1	834 261	-7,1	4 341 896	-13,2
	February	2 695 580	-8,0	1 029 861	78,0	838 594	0,5	4 564 035	5,1
	March	2 484 321	-7,8	1 810 745	75,8	850 264	1,4	5 145 330	12,7
	April	2 353 123	-5,3	2 113 528	16,7	756 215	-11,1	5 222 866	1,5
	May	3 543 561	50,6	1 819 266	-13,9	921 094	21,8	6 283 921	20,3
	June	3 244 122	-8,5	1 325 164	-27,2	857 345	-6,9	5 426 631	-13,6
	July	2 366 854	-27,0	1 150 587	-13,2	727 261	-15,2	4 244 703	-21,8
	August	2 469 520	4,3	1 205 852	4,8	769 723	5,8	4 445 095	4,7
	September	3 279 701	32,8	1 326 114	10,0	946 648	23,0	5 552 463	24,9
	October	2 850 691	-13,1	928 259	-30,0	974 075	2,9	4 753 025	-14,4
	November	2 496 903	-12,4	1 682 124	81,2	1 005 370	3,2	5 184 397	9,1
	December	4 303 994	72,4	985 304	-41,4	1 015 729	1,0	6 305 028	21,6
2017	January	3 101 144	-27,9	1 324 149	34,4	960 738	-5,4	5 386 031	-14,6
	February	3 297 246	6,3	793 718	-40,1	820 687	-14,6	4 911 651	-8,8
	March	3 551 482	7,7	2 469 283	211,1	819 032	-0,2	6 839 797	39,3
	April	3 737 512	5,2	835 924	-66,1	837 990	2,3	5 411 425	-20,9
	May	3 230 493	-13,6	1 458 694	74,5	936 072	11,7	5 625 258	4,0
	June	3 306 461	2,4	2 798 225	91,8	1 029 551	10,0	7 134 237	26,8
	July	2 867 393	-13,3	1 418 931	-49,3	907 403	-11,9	5 193 727	-27,2
	Feb. – Apr. 17	10 586 240		4 098 925		2 477 709		17 162 873	
	May – Jul. 17 2/	9 404 347	-11,2	5 675 850	38,5	2 873 026	16,0	17 953 222	4,6

1/ The percentage change is the change in the seasonally adjusted value of buildings reported as completed to municipalities of the relevant month compared with the seasonally adjusted value of buildings reported as completed to municipalities of the previous month expressed as a percentage.

2/ The percentage change is the change in the seasonally adjusted value of buildings reported as completed to municipalities for the latest three months compared with the seasonally adjusted value of buildings reported as completed to municipalities of the previous three months expressed as a percentage.

3/ Not seasonally adjusted because the presence of seasonality is not significant. See notes 10 and 11 on page 38.

Table 7 – Value and percentage change of buildings reported as completed to larger municipalities at constant 2015 prices by type of building

Year and month 2/		Residential buildings		Non-residential buildings		Additions and alterations		Total	
		R'000	% change 1/	R'000	% change 1/	R'000	% change 1/	R'000	% change 1/
2016	January	2 160 768	17,1	566 050	-29,0	637 309	25,3	3 364 127	6,8
	February	2 357 655	11,1	987 403	-4,7	833 998	21,4	4 179 056	8,7
	March	2 412 793	-7,0	1 731 114	99,6	839 608	-19,0	4 983 515	10,8
	April	2 198 146	-16,0	2 005 245	173,6	780 255	-13,9	4 983 646	17,1
	May	3 098 657	-0,8	1 721 160	77,6	864 163	8,3	5 683 980	16,2
	June	2 907 642	12,2	1 240 790	17,7	870 883	-11,2	5 019 315	8,5
	July	2 184 175	-16,5	1 074 311	-1,3	658 824	-22,2	3 917 310	-13,9
	August	2 342 542	-17,0	1 124 862	-20,6	738 650	-9,0	4 206 054	-16,7
	September	3 393 085	13,3	1 233 594	-24,9	915 272	8,7	5 541 951	1,1
	October	2 829 760	6,2	861 094	-48,7	948 202	24,9	4 639 056	-9,1
	November	2 784 573	-18,2	1 547 492	-20,7	957 575	11,0	5 289 640	-14,9
	December	4 119 653	48,8	899 000	-37,3	796 641	5,2	5 815 294	17,2
	Total	32 789 449	1,9	14 992 115	2,2	9 841 380	0,5	57 622 944	1,8
2017	January	2 144 794	-0,7	1 203 772	112,7	686 649	7,7	4 035 215	19,9
	February	2 700 811	14,6	716 352	-27,5	759 495	-8,9	4 176 658	-0,1
	March	3 229 790	33,9	2 222 577	28,4	987 524	17,6	6 439 891	29,2
	April	3 342 721	52,1	751 055	-62,5	619 112	-20,7	4 712 888	-5,4
	May	2 662 711	-14,1	1 298 926	-24,5	837 356	-3,1	4 798 993	-15,6
	June	2 836 460	-2,4	2 498 415	101,4	1 000 539	14,9	6 335 414	26,2
	July	2 496 788	14,3	1 266 903	17,9	785 184	19,2	4 548 875	16,1

1/ The percentage change is the change in the value of buildings reported as completed to municipalities of the relevant year/month compared with the value of buildings reported as completed to municipalities of the comparable period of the previous year expressed as a percentage.

2/ Preliminary figures.

Table 8 – Seasonally adjusted value and percentage change of buildings reported as completed to larger municipalities at constant 2015 prices by type of building

Year and month		Residential buildings		Non-residential buildings 3/		Additions and alterations		Total	
		R'000	% change 1/	R'000	% change 1/	R'000	% change 1/	R'000	% change 1/
2016	January	2 857 998	9,6	566 050	-60,5	810 481	-8,3	4 234 529	-14,0
	February	2 588 686	-9,4	987 403	74,4	804 297	-0,8	4 380 385	3,4
	March	2 383 900	-7,9	1 731 114	75,3	811 393	0,9	4 926 408	12,5
	April	2 239 470	-6,1	2 005 245	15,8	720 334	-11,2	4 965 049	0,8
	May	3 362 533	50,1	1 721 160	-14,2	872 607	21,1	5 956 300	20,0
	June	3 037 704	-9,7	1 240 790	-27,9	816 305	-6,5	5 094 799	-14,5
	July	2 216 294	-27,0	1 074 311	-13,4	678 221	-16,9	3 968 826	-22,1
	August	2 310 421	4,2	1 124 862	4,7	718 725	6,0	4 154 008	4,7
	September	3 048 219	31,9	1 233 594	9,7	878 479	22,2	5 160 292	24,2
	October	2 641 227	-13,4	861 094	-30,2	900 785	2,5	4 403 106	-14,7
	November	2 287 909	-13,4	1 547 492	79,7	920 032	2,1	4 755 434	8,0
	December	3 898 282	70,4	899 000	-41,9	921 116	0,1	5 718 398	20,2
2017	January	2 811 554	-27,9	1 203 772	33,9	867 451	-5,8	4 882 777	-14,6
	February	2 981 369	6,0	716 352	-40,5	741 560	-14,5	4 439 282	-9,1
	March	3 207 935	7,6	2 222 577	210,3	739 040	-0,3	6 169 552	39,0
	April	3 367 940	5,0	751 055	-66,2	752 888	1,9	4 871 883	-21,0
	May	2 886 654	-14,3	1 298 926	72,9	835 179	10,9	5 020 760	3,1
	June	2 952 522	2,3	2 498 415	92,3	933 319	11,8	6 384 255	27,2
	July	2 566 952	-13,1	1 266 903	-49,3	808 761	-13,3	4 642 616	-27,3
	Feb. – Apr. 17	9 557 244		3 689 984		2 233 488		15 480 717	
	May – Jul. 17 2/	8 406 128	-12,0	5 064 244	37,2	2 577 259	15,4	16 047 631	3,7

1/ The percentage change is the change in the seasonally adjusted value of buildings reported as completed to municipalities of the relevant month compared with the seasonally adjusted value of buildings reported as completed to municipalities of the previous month expressed as a percentage.

2/ The percentage change is the change in the seasonally adjusted value of buildings reported as completed to municipalities for the latest three months compared with the seasonally adjusted value of buildings reported as completed to municipalities of the previous three months expressed as a percentage.

3/ Not seasonally adjusted because the presence of seasonality is not significant. See notes 10 and 11 on page 38.

Table 9 – Recorded building plans passed by larger municipalities at current prices by type of building: South Africa

			Jul. 2016	Jun. 2017	Jul. 2017	Jan. - Jul. 2016	Jan. - Jul. 2017	% change 1/
Category of building	Type of building	Measuring unit						
Residential buildings	Dwelling-houses < 80 square metres	Number	1 369	2 988	1 646	10 498	11 674	11,2
		square metres	69 044	137 925	79 056	504 883	554 259	9,8
		R'000	330 503	524 026	400 061	2 304 447	2 702 570	17,3
	Dwelling-houses >= 80 square metres	Number	1 342	1 431	1 405	9 333	8 654	-7,3
		square metres	362 925	379 496	382 793	2 515 706	2 346 019	-6,7
		R'000	2 411 174	2 695 799	2 751 043	16 687 700	16 223 026	-2,8
	Flats and townhouses	Number	1 030	1 368	2 521	12 432	12 529	0,8
		square metres	119 426	180 987	262 148	1 228 398	1 424 737	16,0
		R'000	1 017 178	1 420 197	2 445 470	9 726 079	11 371 383	16,9
	Other residential buildings 2/	square metres	492	14 331	3 972	203 432	42 278	-79,2
		R'000	3 311	133 140	23 279	1 931 559	300 401	-84,4
	Total residential buildings	R'000	3 762 166	4 773 162	5 619 853	30 649 785	30 597 380	-0,2
Non-residential buildings	Office and banking space	square metres	32 315	101 832	11 737	333 054	314 733	-5,5
		R'000	286 749	950 251	98 999	2 852 177	2 870 661	0,6
	Shopping space	square metres	30 190	39 433	89 399	890 880	364 959	-59,0
		R'000	170 686	316 696	853 246	7 262 903	3 117 743	-57,1
	Industrial and warehouse space	square metres	111 975	110 788	186 114	859 631	963 537	12,1
		R'000	621 012	646 866	1 062 766	4 717 287	5 593 778	18,6
	Other non-residential buildings 3/	square metres	47 219	40 298	93 227	388 556	285 263	-26,6
		R'000	304 668	277 307	699 238	2 669 190	2 033 006	-23,8
	Total non-residential buildings	R'000	1 383 115	2 191 120	2 714 249	17 501 557	13 615 188	-22,2
	Additions and alterations	Dwelling-houses	square metres	256 831	274 653	264 175	1 702 748	1 680 204
R'000			1 729 931	1 902 428	1 915 251	11 045 389	11 659 969	5,6
Other buildings 4/		square metres	91 568	71 146	67 425	465 617	429 219	-7,8
		R'000	802 894	732 361	720 668	4 165 326	4 176 744	0,3
Total additions and alterations	R'000	2 532 825	2 634 789	2 635 919	15 210 715	15 836 713	4,1	
Recorded plans passed	Total at current prices	R'000	7 678 106	9 599 071	10 970 021	63 362 057	60 049 281	-5,2

1/ The percentage change between cumulative figures for 2016 and 2017.

2/ Other residential buildings include institutions for the disabled, boarding houses, hostels and tourism accommodation e.g. hotels, motels, guest-houses, holiday chalets, bed-and-breakfast accommodation and casinos.

3/ Other non-residential space includes churches, sport and recreation clubs, schools, crèches, hospitals and all other non-residential space.

4/ Other buildings include other residential buildings, non-residential buildings and internal alterations. No square metres are collected for internal alterations.

Table 10 – Recorded building plans passed by larger municipalities at current prices by type of building: Western Cape

			Jul. 2016	Jun. 2017	Jul. 2017	Jan. - Jul. 2016	Jan. - Jul. 2017	% change 1/
Category of building	Type of building	Measuring unit						
Residential buildings	Dwelling-houses < 80 square metres	Number	560	662	672	4 170	4 377	5,0
		square metres	25 700	29 931	31 113	188 279	203 297	8,0
		R'000	138 457	178 180	177 442	1 032 184	1 218 771	18,1
	Dwelling-houses >= 80 square metres	Number	421	472	432	2 645	2 875	8,7
		square metres	100 710	114 534	110 119	654 473	689 263	5,3
		R'000	659 988	773 560	764 326	4 310 437	4 620 186	7,2
	Flats and townhouses	Number	283	254	1 095	3 028	4 460	47,3
		square metres	42 953	39 468	89 892	351 117	458 470	30,6
		R'000	340 167	297 217	686 824	2 658 630	3 473 915	30,7
	Other residential buildings 2/	square metres	0	840	696	40 779	8 500	-79,2
		R'000	0	6 667	4 678	312 780	56 918	-81,8
	Total residential buildings	R'000	1 138 612	1 255 624	1 633 270	8 314 031	9 369 790	12,7
	Non-residential buildings	Office and banking space	square metres	15 502	36 510	210	51 618	99 624
R'000			135 731	321 555	1 844	432 573	872 589	101,7
Shopping space		square metres	0	12 430	1 117	110 697	56 378	-49,1
		R'000	0	108 889	9 890	905 389	459 542	-49,2
Industrial and warehouse space		square metres	20 804	10 864	27 977	197 690	155 562	-21,3
		R'000	134 169	77 088	198 497	1 319 412	1 097 793	-16,8
Other non-residential buildings 3/		square metres	13 980	11 127	59 907	86 885	99 406	14,4
		R'000	86 413	74 310	395 386	575 784	656 530	14,0
Total non-residential buildings		R'000	356 313	581 842	605 617	3 233 158	3 086 454	-4,5
Additions and alterations	Dwelling-houses	square metres	78 263	86 390	82 637	491 865	486 126	-1,2
		R'000	504 397	551 637	549 304	3 110 776	3 160 234	1,6
	Other buildings 4/	square metres	34 171	29 213	27 975	146 962	139 576	-5,0
		R'000	355 456	335 845	340 197	1 514 337	1 577 783	4,2
Total additions and alterations	R'000	859 853	887 482	889 501	4 625 113	4 738 017	2,4	
Recorded plans passed	Total at current prices	R'000	2 354 778	2 724 948	3 128 388	16 172 302	17 194 261	6,3

1/ The percentage change between cumulative figures for 2016 and 2017.

2/ Other residential buildings include institutions for the disabled, boarding houses, hostels and tourism accommodation e.g. hotels, motels, guest-houses, holiday chalets, bed-and-breakfast accommodation and casinos.

3/ Other non-residential space includes churches, sport and recreation clubs, schools, crèches, hospitals and all other non-residential space.

4/ Other buildings include other residential buildings, non-residential buildings and internal alterations. No square metres are collected for internal alterations.

Table 11 – Recorded building plans passed by larger municipalities at current prices by type of building: Eastern Cape

			Jul. 2016	Jun. 2017	Jul. 2017	Jan. - Jul. 2016	Jan. - Jul. 2017	% change 1/
Category of building	Type of building	Measuring unit						
Residential buildings	Dwelling-houses < 80 square metres	Number	45	29	194	574	1 267	120,7
		square metres	2 952	1 933	9 998	28 248	58 633	107,6
		R'000	16 939	12 105	62 139	123 909	294 709	137,8
	Dwelling-houses >= 80 square metres	Number	124	137	176	627	683	8,9
		square metres	30 621	27 693	59 161	140 900	168 259	19,4
		R'000	170 825	171 721	375 648	808 861	1 020 576	26,2
	Flats and townhouses	Number	21	34	54	574	259	-54,9
		square metres	4 581	9 094	6 100	40 155	30 508	-24,0
		R'000	25 728	53 770	39 699	220 447	177 078	-19,7
	Other residential buildings 2/	square metres	0	0	144	2 064	6 210	200,9
		R'000	0	0	914	8 626	36 924	328,1
	Total residential buildings	R'000	213 492	237 596	478 400	1 161 843	1 529 287	31,6
Non-residential buildings	Office and banking space	square metres	0	419	0	544	8 459	1 455,0
		R'000	0	2 894	0	2 501	46 883	1 774,6
	Shopping space	square metres	0	2 599	2 107	1 936	15 684	710,1
		R'000	0	17 359	13 777	9 033	87 501	868,7
	Industrial and warehouse space	square metres	7 806	30 843	14 880	70 414	100 857	43,2
		R'000	38 735	182 117	94 258	333 264	581 944	74,6
	Other non-residential buildings 3/	square metres	3 738	7 812	1 521	16 527	14 692	-11,1
		R'000	18 888	42 380	7 934	73 313	78 599	7,2
	Total non-residential buildings	R'000	57 623	244 750	115 969	418 111	794 927	90,1
	Additions and alterations	Dwelling-houses	square metres	16 090	31 330	25 182	137 825	166 170
R'000			81 908	172 587	163 496	714 863	1 004 950	40,6
Other buildings 4/		square metres	13 638	4 222	2 549	45 302	30 977	-31,6
		R'000	59 677	33 410	23 956	195 759	200 998	2,7
Total additions and alterations	R'000	141 585	205 997	187 452	910 622	1 205 948	32,4	
Recorded plans passed	Total at current prices	R'000	412 700	688 343	781 821	2 490 576	3 530 162	41,7

1/ The percentage change between cumulative figures for 2016 and 2017.

2/ Other residential buildings include institutions for the disabled, boarding houses, hostels and tourism accommodation e.g. hotels, motels, guest-houses, holiday chalets, bed-and-breakfast accommodation and casinos.

3/ Other non-residential space includes churches, sport and recreation clubs, schools, crèches, hospitals and all other non-residential space.

4/ Other buildings include other residential buildings, non-residential buildings and internal alterations. No square metres are collected for internal alterations.

Table 12 – Recorded building plans passed by larger municipalities at current prices by type of building: Northern Cape

			Jul. 2016	Jun. 2017	Jul. 2017	Jan. - Jul. 2016	Jan. - Jul. 2017	% change 1/
Category of building	Type of building	Measuring unit						
Residential buildings	Dwelling-houses < 80 square metres	Number	4	1	3	15	20	33,3
		square metres	246	62	138	1 051	1 137	8,2
		R'000	1 509	334	380	6 339	5 722	-9,7
	Dwelling-houses >= 80 square metres	Number	13	14	21	116	99	-14,7
		square metres	2 491	3 300	4 184	21 571	21 083	-2,3
		R'000	16 217	20 989	30 266	138 710	144 224	4,0
	Flats and townhouses	Number	1	0	0	51	0	..
		square metres	75	0	0	5 856	0	..
		R'000	488	0	0	35 623	0	..
	Other residential buildings 2/	square metres	0	390	0	0	780	..
		R'000	0	2 535	0	0	5 070	..
	Total residential buildings	R'000	18 214	23 858	30 646	180 672	155 016	-14,2
Non-residential buildings	Office and banking space	square metres	0	417	0	9 203	417	-95,5
		R'000	0	1 877	0	55 150	1 877	-96,6
	Shopping space	square metres	3 087	4 856	0	4 585	4 856	5,9
		R'000	19 756	31 564	0	26 902	31 564	17,3
	Industrial and warehouse space	square metres	536	1 249	2 198	9 376	10 510	12,1
		R'000	2 412	9 492	11 242	54 252	71 988	32,7
	Other non-residential buildings 3/	square metres	568	0	245	17 959	903	-95,0
		R'000	3 692	0	1 166	141 258	5 444	-96,1
	Total non-residential buildings	R'000	25 860	42 933	12 408	277 562	110 873	-60,1
	Additions and alterations	Dwelling-houses	square metres	6 420	3 198	3 580	30 763	20 745
R'000			47 558	21 921	26 161	216 698	143 927	-33,6
Other buildings 4/		square metres	250	1 686	103	2 437	2 312	-5,1
		R'000	13 458	10 857	3 890	35 251	19 167	-45,6
Total additions and alterations	R'000	61 016	32 778	30 051	251 949	163 094	-35,3	
Recorded plans passed	Total at current prices	R'000	105 090	99 569	73 105	710 183	428 983	-39,6

1/ The percentage change between cumulative figures for 2016 and 2017.

2/ Other residential buildings include institutions for the disabled, boarding houses, hostels and tourism accommodation e.g. hotels, motels, guest-houses, holiday chalets, bed-and-breakfast accommodation and casinos.

3/ Other non-residential space includes churches, sport and recreation clubs, schools, crèches, hospitals and all other non-residential space.

4/ Other buildings include other residential buildings, non-residential buildings and internal alterations. No square metres are collected for internal alterations.

Table 13 – Recorded building plans passed by larger municipalities at current prices by type of building: Free State

			Jul. 2016	Jun. 2017	Jul. 2017	Jan. - Jul. 2016	Jan. - Jul. 2017	% change 1/
Category of building	Type of building	Measuring unit						
Residential buildings	Dwelling-houses < 80 square metres	Number	37	2	15	554	70	-87,4
		square metres	2 091	90	1 081	29 238	4 155	-85,8
		R'000	11 633	522	7 660	103 038	25 095	-75,6
	Dwelling-houses >= 80 square metres	Number	98	54	56	497	399	-19,7
		square metres	21 419	12 967	11 521	114 194	83 538	-26,8
		R'000	121 214	69 799	73 146	619 168	464 624	-25,0
	Flats and townhouses	Number	30	196	38	343	575	67,6
		square metres	4 991	18 689	2 565	40 478	69 028	70,5
		R'000	34 937	129 090	15 800	267 375	472 392	76,7
	Other residential buildings 2/	square metres	492	162	0	4 661	1 377	-70,5
		R'000	3 311	972	0	31 099	7 362	-76,3
	Total residential buildings	R'000	171 095	200 383	96 606	1 020 680	969 473	-5,0
Non-residential buildings	Office and banking space	square metres	0	4 519	0	12 831	4 862	-62,1
		R'000	0	36 152	0	101 704	38 896	-61,8
	Shopping space	square metres	110	0	0	7 013	5 893	-16,0
		R'000	770	0	0	45 336	32 010	-29,4
	Industrial and warehouse space	square metres	7 324	2 287	3 046	33 966	25 923	-23,7
		R'000	35 493	13 265	16 170	161 403	128 838	-20,2
	Other non-residential buildings 3/	square metres	25	3 585	0	10 075	8 234	-18,3
		R'000	200	28 680	0	73 481	52 940	-28,0
	Total non-residential buildings	R'000	36 463	78 097	16 170	381 924	252 684	-33,8
	Additions and alterations	Dwelling-houses	square metres	14 008	8 381	11 480	84 734	78 495
R'000			73 465	45 618	76 136	439 806	429 796	-2,3
Other buildings 4/		square metres	6 346	57	684	13 392	16 146	20,6
		R'000	40 257	5 556	24 326	149 776	200 127	33,6
Total additions and alterations	R'000	113 722	51 174	100 462	589 582	629 923	6,8	
Recorded plans passed	Total at current prices	R'000	321 280	329 654	213 238	1 992 186	1 852 080	-7,0

1/ The percentage change between cumulative figures for 2016 and 2017.

2/ Other residential buildings include institutions for the disabled, boarding houses, hostels and tourism accommodation e.g. hotels, motels, guest-houses, holiday chalets, bed-and-breakfast accommodation and casinos.

3/ Other non-residential space includes churches, sport and recreation clubs, schools, crèches, hospitals and all other non-residential space.

4/ Other buildings include other residential buildings, non-residential buildings and internal alterations. No square metres are collected for internal alterations.

Table 14 – Recorded building plans passed by larger municipalities at current prices by type of building: KwaZulu-Natal

			Jul. 2016	Jun. 2017	Jul. 2017	Jan. - Jul. 2016	Jan. - Jul. 2017	% change 1/
Category of building	Type of building	Measuring unit						
Residential buildings	Dwelling-houses < 80 square metres	Number	20	510	15	230	719	212,6
		square metres	1 092	20 675	801	11 741	30 700	161,5
		R'000	9 776	57 809	5 728	81 946	119 372	45,7
	Dwelling-houses >= 80 square metres	Number	110	110	93	811	728	-10,2
		square metres	32 886	34 497	33 229	251 702	226 821	-9,9
		R'000	289 767	327 691	317 535	2 152 116	2 122 395	-1,4
	Flats and townhouses	Number	96	413	523	2 120	1 850	-12,7
		square metres	22 161	45 341	92 957	204 042	275 587	35,1
		R'000	216 833	413 647	1 020 977	1 873 591	2 758 782	47,2
	Other residential buildings 2/	square metres	0	9 423	2 100	15 010	14 715	-2,0
		R'000	0	106 480	12 572	147 813	139 799	-5,4
	Total residential buildings	R'000	516 376	905 627	1 356 812	4 255 466	5 140 348	20,8
Non-residential buildings	Office and banking space	square metres	6 719	15 718	3 917	92 525	72 181	-22,0
		R'000	69 108	122 497	32 027	893 989	663 112	-25,8
	Shopping space	square metres	284	10 497	5 981	493 347	118 798	-75,9
		R'000	2 982	101 816	52 777	4 374 596	1 152 024	-73,7
	Industrial and warehouse space	square metres	26 270	24 209	52 276	126 337	165 214	30,8
		R'000	151 479	139 066	314 386	686 358	975 537	42,1
	Other non-residential buildings 3/	square metres	18 120	950	18 986	71 827	43 039	-40,1
		R'000	130 921	8 981	196 269	488 913	375 877	-23,1
	Total non-residential buildings	R'000	354 490	372 360	595 459	6 443 856	3 166 550	-50,9
	Additions and alterations	Dwelling-houses	square metres	31 929	36 478	35 524	202 813	230 355
R'000			304 169	357 368	346 217	1 761 397	2 204 487	25,2
Other buildings 4/		square metres	22 243	17 825	18 312	130 743	112 617	-13,9
		R'000	208 597	211 736	190 515	1 215 952	1 232 740	1,4
Total additions and alterations	R'000	512 766	569 104	536 732	2 977 349	3 437 227	15,4	
Recorded plans passed	Total at current prices	R'000	1 383 632	1 847 091	2 489 003	13 676 671	11 744 125	-14,1

1/ The percentage change between cumulative figures for 2016 and 2017.

2/ Other residential buildings include institutions for the disabled, boarding houses, hostels and tourism accommodation e.g. hotels, motels, guest-houses, holiday chalets, bed-and-breakfast accommodation and casinos.

3/ Other non-residential space includes churches, sport and recreation clubs, schools, crèches, hospitals and all other non-residential space.

4/ Other buildings include other residential buildings, non-residential buildings and internal alterations. No square metres are collected for internal alterations.

Table 15 – Recorded building plans passed by larger municipalities at current prices by type of building: North West

			Jul. 2016	Jun. 2017	Jul. 2017	Jan. - Jul. 2016	Jan. - Jul. 2017	% change 1/
Category of building	Type of building	Measuring unit						
Residential buildings	Dwelling-houses < 80 square metres	Number	3	873	11	85	914	975,3
		square metres	198	39 389	631	5 189	41 901	707,5
		R'000	905	79 857	3 229	23 830	91 650	284,6
	Dwelling-houses >= 80 square metres	Number	79	56	52	532	437	-17,9
		square metres	20 505	13 854	13 731	132 691	112 882	-14,9
		R'000	108 761	71 333	76 399	682 201	600 734	-11,9
	Flats and townhouses	Number	162	52	86	712	1 424	100,0
		square metres	5 298	6 374	3 998	52 586	150 635	186,5
		R'000	33 208	39 306	27 601	283 387	901 607	218,2
	Other residential buildings 2/	square metres	0	0	1 032	1 325	1 032	-22,1
		R'000	0	0	5 115	7 954	5 115	-35,7
	Total residential buildings	R'000	142 874	190 496	112 344	997 372	1 599 106	60,3
Non-residential buildings	Office and banking space	square metres	0	56	0	6 597	1 597	-75,8
		R'000	0	224	0	38 204	10 173	-73,4
	Shopping space	square metres	1 624	3 703	0	21 279	12 487	-41,3
		R'000	7 704	20 165	0	115 560	65 437	-43,4
	Industrial and warehouse space	square metres	3 047	823	0	16 301	7 552	-53,7
		R'000	15 236	3 794	0	82 019	35 109	-57,2
	Other non-residential buildings 3/	square metres	803	0	229	7 553	1 312	-82,6
		R'000	4 497	0	969	40 229	5 765	-85,7
	Total non-residential buildings	R'000	27 437	24 183	969	276 012	116 484	-57,8
	Additions and alterations	Dwelling-houses	square metres	10 966	11 998	11 742	81 423	73 797
R'000			56 335	62 335	62 689	386 088	372 706	-3,5
Other buildings 4/		square metres	497	1 207	1 549	8 998	9 691	7,7
		R'000	3 536	14 975	8 125	59 530	70 028	17,6
Total additions and alterations	R'000	59 871	77 310	70 814	445 618	442 734	-0,6	
Recorded plans passed	Total at current prices	R'000	230 182	291 989	184 127	1 719 002	2 158 324	25,6

1/ The percentage change between cumulative figures for 2016 and 2017.

2/ Other residential buildings include institutions for the disabled, boarding houses, hostels and tourism accommodation e.g. hotels, motels, guest-houses, holiday chalets, bed-and-breakfast accommodation and casinos.

3/ Other non-residential space includes churches, sport and recreation clubs, schools, crèches, hospitals and all other non-residential space.

4/ Other buildings include other residential buildings, non-residential buildings and internal alterations. No square metres are collected for internal alterations.

Table 16 – Recorded building plans passed by larger municipalities at current prices by type of building: Gauteng

			Jul. 2016	Jun. 2017	Jul. 2017	Jan. - Jul. 2016	Jan. - Jul. 2017	% change 1/
Category of building	Type of building	Measuring unit						
Residential buildings	Dwelling-houses < 80 square metres	Number	479	879	694	3 930	3 617	-8,0
		square metres	23 398	43 974	32 932	190 552	178 606	-6,3
		R'000	110 710	186 606	131 994	734 773	781 880	6,4
	Dwelling-houses >= 80 square metres	Number	356	437	449	2 918	2 518	-13,7
		square metres	118 650	128 885	115 082	915 704	792 915	-13,4
		R'000	869 162	1 004 875	917 737	6 548 315	5 941 351	-9,3
	Flats and townhouses	Number	410	369	700	5 309	3 686	-30,6
		square metres	37 455	57 777	64 153	503 860	406 426	-19,3
		R'000	357 070	466 450	642 500	4 224 304	3 404 450	-19,4
	Other residential buildings 2/	square metres	0	0	0	132 737	4 646	-96,5
		R'000	0	0	0	1 391 296	25 967	-98,1
	Total residential buildings	R'000	1 336 942	1 657 931	1 692 231	12 898 688	10 153 648	-21,3
Non-residential buildings	Office and banking space	square metres	9 810	43 598	3 459	127 375	107 653	-15,5
		R'000	80 490	462 077	36 463	1 154 741	1 132 702	-1,9
	Shopping space	square metres	4 958	4 078	78 364	207 159	122 938	-40,7
		R'000	29 607	30 867	764 464	1 553 133	1 123 189	-27,7
	Industrial and warehouse space	square metres	37 156	29 495	78 513	352 576	462 037	31,0
		R'000	201 069	157 183	396 040	1 826 527	2 523 264	38,1
	Other non-residential buildings 3/	square metres	6 298	15 428	10 718	153 099	90 065	-41,2
		R'000	37 594	116 050	89 989	1 154 047	702 836	-39,1
	Total non-residential buildings	R'000	348 760	766 177	1 286 956	5 688 448	5 481 991	-3,6
	Additions and alterations	Dwelling-houses	square metres	75 761	80 385	77 200	539 608	519 853
R'000			554 292	605 853	605 608	3 785 873	3 836 685	1,3
Other buildings 4/		square metres	11 568	15 010	14 623	102 274	106 475	4,1
		R'000	100 605	92 118	109 406	874 201	744 850	-14,8
Total additions and alterations	R'000	654 897	697 971	715 014	4 660 074	4 581 535	-1,7	
Recorded plans passed	Total at current prices	R'000	2 340 599	3 122 079	3 694 201	23 247 210	20 217 174	-13,0

1/ The percentage change between cumulative figures for 2016 and 2017.

2/ Other residential buildings include institutions for the disabled, boarding houses, hostels and tourism accommodation e.g. hotels, motels, guest-houses, holiday chalets, bed-and-breakfast accommodation and casinos.

3/ Other non-residential space includes churches, sport and recreation clubs, schools, crèches, hospitals and all other non-residential space.

4/ Other buildings include other residential buildings, non-residential buildings and internal alterations. No square metres are collected for internal alterations.

Table 17 – Recorded building plans passed by larger municipalities at current prices by type of building: Mpumalanga

			Jul. 2016	Jun. 2017	Jul. 2017	Jan. - Jul. 2016	Jan. - Jul. 2017	% change 1/
Category of building	Type of building	Measuring unit						
Residential buildings	Dwelling-houses < 80 square metres	Number	215	24	25	826	558	-32,4
		square metres	12 939	1 358	1 328	43 764	27 526	-37,1
		R'000	38 652	6 048	6 319	164 909	116 499	-29,4
	Dwelling-houses >= 80 square metres	Number	86	113	77	830	588	-29,2
		square metres	18 971	31 333	19 452	184 292	155 717	-15,5
		R'000	96 144	193 520	110 257	935 747	821 724	-12,2
	Flats and townhouses	Number	24	18	8	229	84	-63,3
		square metres	1 626	1 006	1 455	18 316	7 096	-61,3
		R'000	7 317	4 527	6 929	100 987	32 448	-67,9
	Other residential buildings 2/	square metres	0	737	0	5 554	2 239	-59,7
		R'000	0	3 317	0	25 221	10 077	-60,0
	Total residential buildings	R'000	142 113	207 412	123 505	1 226 864	980 748	-20,1
Non-residential buildings	Office and banking space	square metres	0	0	4 151	27 265	8 745	-67,9
		R'000	0	0	28 665	148 975	49 453	-66,8
	Shopping space	square metres	19 289	785	420	40 792	19 052	-53,3
		R'000	105 842	3 611	2 000	213 131	118 531	-44,4
	Industrial and warehouse space	square metres	5 567	9 854	1 513	36 189	21 080	-41,8
		R'000	25 418	59 041	7 203	171 642	110 551	-35,6
	Other non-residential buildings 3/	square metres	1 066	0	1 237	18 027	10 992	-39,0
		R'000	4 904	0	5 890	83 990	50 224	-40,2
	Total non-residential buildings	R'000	136 164	62 652	43 758	617 738	328 759	-46,8
	Additions and alterations	Dwelling-houses	square metres	17 404	13 059	12 663	96 529	72 306
R'000			78 819	67 782	63 673	448 220	345 633	-22,9
Other buildings 4/		square metres	1 383	956	1 558	9 300	8 062	-13,3
		R'000	12 259	22 000	19 357	80 804	103 338	27,9
Total additions and alterations	R'000	91 078	89 782	83 030	529 024	448 971	-15,1	
Recorded plans passed	Total at current prices	R'000	369 355	359 846	250 293	2 373 626	1 758 478	-25,9

1/ The percentage change between cumulative figures for 2016 and 2017.

2/ Other residential buildings include institutions for the disabled, boarding houses, hostels and tourism accommodation e.g. hotels, motels, guest-houses, holiday chalets, bed-and-breakfast accommodation and casinos.

3/ Other non-residential space includes churches, sport and recreation clubs, schools, crèches, hospitals and all other non-residential space.

4/ Other buildings include other residential buildings, non-residential buildings and internal alterations. No square metres are collected for internal alterations.

Table 18 – Recorded building plans passed by larger municipalities at current prices by type of building: Limpopo

			Jul. 2016	Jun. 2017	Jul. 2017	Jan. - Jul. 2016	Jan. - Jul. 2017	% change 1/
Category of building	Type of building	Measuring unit						
Residential buildings	Dwelling-houses < 80 square metres	Number	6	8	17	114	132	15,8
		square metres	428	513	1 034	6 821	8 304	21,7
		R'000	1 922	2 565	5 170	33 519	48 872	45,8
	Dwelling-houses >= 80 square metres	Number	55	38	49	357	327	-8,4
		square metres	16 672	12 433	16 314	100 179	95 541	-4,6
		R'000	79 096	62 311	85 729	492 145	487 212	-1,0
	Flats and townhouses	Number	3	32	17	66	191	189,4
		square metres	286	3 238	1 028	11 988	26 987	125,1
		R'000	1 430	16 190	5 140	61 735	150 711	144,1
	Other residential buildings 2/	square metres	0	2 779	0	1 302	2 779	113,4
		R'000	0	13 169	0	6 770	13 169	94,5
	Total residential buildings	R'000	82 448	94 235	96 039	594 169	699 964	17,8
Non-residential buildings	Office and banking space	square metres	284	595	0	5 096	11 195	119,7
		R'000	1 420	2 975	0	24 340	54 976	125,9
	Shopping space	square metres	838	485	1 410	4 072	8 873	117,9
		R'000	4 025	2 425	10 338	19 823	47 945	141,9
	Industrial and warehouse space	square metres	3 465	1 164	5 711	16 782	14 802	-11,8
		R'000	17 001	5 820	24 970	82 410	68 754	-16,6
	Other non-residential buildings 3/	square metres	2 621	1 396	384	6 604	16 620	151,7
		R'000	17 559	6 906	1 635	38 175	104 791	174,5
	Total non-residential buildings	R'000	40 005	18 126	36 943	164 748	276 466	67,8
	Additions and alterations	Dwelling-houses	square metres	5 990	3 434	4 167	37 188	32 357
R'000			28 988	17 327	21 967	181 668	161 551	-11,1
Other buildings 4/		square metres	1 472	970	72	6 209	3 363	-45,8
		R'000	9 049	5 864	896	39 716	27 713	-30,2
Total additions and alterations	R'000	38 037	23 191	22 863	221 384	189 264	-14,5	
Recorded plans passed	Total at current prices	R'000	160 490	135 552	155 845	980 301	1 165 694	18,9

1/ The percentage change between cumulative figures for 2016 and 2017.

2/ Other residential buildings include institutions for the disabled, boarding houses, hostels and tourism accommodation e.g. hotels, motels, guest-houses, holiday chalets, bed-and-breakfast accommodation and casinos.

3/ Other non-residential space includes churches, sport and recreation clubs, schools, crèches, hospitals and all other non-residential space.

4/ Other buildings include other residential buildings, non-residential buildings and internal alterations. No square metres are collected for internal alterations.

Table 19 – Buildings reported as completed to larger municipalities at current prices by type of building: South Africa

			Jul. 2016	Jun. 2017	Jul. 2017	Jan. - Jul. 2016	Jan. - Jul. 2017	% change 1/	
Category of building	Type of building	Measuring unit							
Residential buildings	Dwelling-houses < 80 square metres	Number	910	1 668	865	8 169	8 998	10,1	
		square metres	45 742	78 925	47 444	397 833	434 285	9,2	
		R'000	218 801	335 554	248 164	1 668 891	2 021 143	21,1	
	Dwelling-houses >= 80 square metres	Number	864	954	851	6 972	5 667	-18,7	
		square metres	233 091	254 226	215 012	1 698 462	1 533 733	-9,7	
		R'000	1 574 227	1 835 308	1 541 034	11 084 224	10 907 325	-1,6	
	Flats and townhouses	Number	584	636	977	7 494	8 231	9,8	
		square metres	65 942	82 172	111 069	712 788	814 694	14,3	
		R'000	495 736	646 138	974 374	5 317 731	6 606 092	24,2	
	Other residential buildings 2/	square metres	6 691	44 887	5 348	22 820	219 396	861,4	
		R'000	50 487	359 835	32 831	157 013	2 089 421	1 230,7	
Total residential buildings		R'000	2 339 251	3 176 835	2 796 403	18 227 859	21 623 981	18,6	
Non-residential buildings	Office and banking space	square metres	37 821	50 797	7 146	357 204	335 632	-6,0	
		R'000	318 918	474 632	60 400	2 986 867	3 059 599	2,4	
	Shopping space	square metres	25 053	198 738	21 536	295 058	437 441	48,3	
		R'000	223 029	1 519 706	157 694	2 519 611	3 437 367	36,4	
	Industrial and warehouse space	square metres	106 384	101 542	183 224	614 012	669 247	9,0	
		R'000	565 172	572 262	981 265	3 226 537	3 695 218	14,5	
	Other non-residential buildings 3/	square metres	7 055	31 715	28 277	172 799	119 686	-30,7	
		R'000	43 468	231 625	219 572	1 094 639	906 740	-17,2	
	Total non-residential buildings		R'000	1 150 587	2 798 225	1 418 931	9 827 654	11 098 924	12,9
	Additions and alterations	Dwelling-houses	square metres	82 177	119 415	98 679	686 634	670 489	-2,4
R'000			483 218	740 848	658 172	4 028 834	4 210 319	4,5	
Other buildings 4/		square metres	28 510	35 838	25 473	208 282	211 985	1,8	
		R'000	222 383	379 756	221 234	1 742 099	2 113 088	21,3	
Total additions and alterations		R'000	705 601	1 120 604	879 406	5 770 933	6 323 407	9,6	
Recorded buildings completed	Total at current prices		R'000	4 195 439	7 095 664	5 094 740	33 826 446	39 046 312	15,4

1/ The percentage change between cumulative figures for 2016 and 2017.

2/ Other residential buildings include institutions for the disabled, boarding houses, hostels and tourism accommodation e.g. hotels, motels, guest-houses, holiday chalets, bed-and-breakfast accommodation and casinos.

3/ Other non-residential space includes churches, sport and recreation clubs, schools, crèches, hospitals and all other non-residential space.

4/ Other buildings include other residential buildings, non-residential buildings and internal alterations. No square metres are collected for internal alterations.

Table 20 – Buildings reported as completed to larger municipalities at current prices by type of building: Western Cape

			Jul. 2016	Jun. 2017	Jul. 2017	Jan. - Jul. 2016	Jan. - Jul. 2017	% change 1/	
Category of building	Type of building	Measuring unit							
Residential buildings	Dwelling-houses < 80 square metres	Number	285	462	325	2 001	3 407	70,3	
		square metres	12 879	20 937	16 085	90 745	155 763	71,6	
		R'000	62 534	118 245	90 920	462 373	854 194	84,7	
	Dwelling-houses >= 80 square metres	Number	296	303	329	1 875	1 930	2,9	
		square metres	69 389	70 403	77 862	434 374	451 715	4,0	
		R'000	446 481	468 682	508 068	2 707 384	2 961 806	9,4	
	Flats and townhouses	Number	214	130	308	2 184	1 712	-21,6	
		square metres	22 405	24 690	34 525	212 955	205 572	-3,5	
		R'000	170 076	185 582	277 905	1 627 534	1 565 023	-3,8	
	Other residential buildings 2/	square metres	4 042	36 637	3 450	5 111	66 678	1 204,6	
		R'000	32 740	306 451	24 219	42 078	532 959	1 166,6	
	Total residential buildings		R'000	711 831	1 078 960	901 112	4 839 369	5 913 982	22,2
Non-residential buildings	Office and banking space	square metres	2 499	2 969	3 812	65 886	109 762	66,6	
		R'000	14 424	28 945	32 889	409 627	816 234	99,3	
	Shopping space	square metres	300	2 138	11 579	14 869	26 455	77,9	
		R'000	2 514	17 773	92 606	114 380	195 845	71,2	
	Industrial and warehouse space	square metres	11 520	32 217	26 594	115 756	159 155	37,5	
		R'000	67 517	206 271	184 676	701 982	1 058 286	50,8	
	Other non-residential buildings 3/	square metres	2 417	6 361	2 584	56 831	28 229	-50,3	
		R'000	15 717	40 108	18 707	387 590	186 849	-51,8	
	Total non-residential buildings		R'000	100 172	293 097	328 878	1 613 579	2 257 214	39,9
	Additions and alterations	Dwelling-houses	square metres	42 516	54 921	47 613	276 823	322 557	16,5
R'000			222 369	312 777	270 889	1 434 786	1 804 448	25,8	
Other buildings 4/		square metres	10 954	17 756	17 739	78 170	89 531	14,5	
		R'000	101 476	150 291	158 376	753 242	914 500	21,4	
Total additions and alterations		R'000	323 845	463 068	429 265	2 188 028	2 718 948	24,3	
Recorded buildings completed	Total at current prices		R'000	1 135 848	1 835 125	1 659 255	8 640 976	10 890 144	26,0

1/ The percentage change between cumulative figures for 2016 and 2017.

2/ Other residential buildings include institutions for the disabled, boarding houses, hostels and tourism accommodation e.g. hotels, motels, guest-houses, holiday chalets, bed-and-breakfast accommodation and casinos.

3/ Other non-residential space includes churches, sport and recreation clubs, schools, crèches, hospitals and all other non-residential space.

4/ Other buildings include other residential buildings, non-residential buildings and internal alterations. No square metres are collected for internal alterations.

Table 21 – Buildings reported as completed to larger municipalities at current prices by type of building: Eastern Cape

			Jul. 2016	Jun. 2017	Jul. 2017	Jan. - Jul. 2016	Jan. - Jul. 2017	% change 1/	
Category of building	Type of building	Measuring unit							
Residential buildings	Dwelling-houses < 80 square metres	Number	107	36	19	427	200	-53,2	
		square metres	5 268	1 878	1 004	21 231	10 816	-49,1	
		R'000	15 329	6 981	4 387	78 896	55 719	-29,4	
	Dwelling-houses >= 80 square metres	Number	21	67	44	233	343	47,2	
		square metres	4 525	9 803	9 362	49 067	69 561	41,8	
		R'000	29 290	55 701	61 321	268 640	388 074	44,5	
	Flats and townhouses	Number	4	8	2	265	70	-73,6	
		square metres	346	819	233	27 064	6 384	-76,4	
		R'000	1 712	4 686	1 479	145 663	36 919	-74,7	
	Other residential buildings 2/	square metres	0	917	0	1 059	4 056	283,0	
		R'000	0	5 245	0	6 884	23 020	234,4	
	Total residential buildings		R'000	46 331	72 613	67 187	500 083	503 732	0,7
Non-residential buildings	Office and banking space	square metres	3 061	338	0	3 197	3 361	5,1	
		R'000	18 050	1 690	0	18 852	15 173	-19,5	
	Shopping space	square metres	1 369	0	0	2 402	1 892	-21,2	
		R'000	6 845	0	0	12 406	9 025	-27,3	
	Industrial and warehouse space	square metres	0	6 769	4 500	3 723	18 343	392,7	
		R'000	0	34 830	22 500	15 764	92 059	484,0	
	Other non-residential buildings 3/	square metres	260	0	3 739	373	4 902	1 214,2	
		R'000	1 220	0	18 695	1 706	24 861	1 357,3	
	Total non-residential buildings		R'000	26 115	36 520	41 195	48 728	141 118	189,6
	Additions and alterations	Dwelling-houses	square metres	3 048	11 310	6 523	30 206	55 947	85,2
R'000			15 022	54 291	40 649	135 617	274 899	102,7	
Other buildings 4/		square metres	1 596	1 557	1 702	12 743	17 514	37,4	
		R'000	7 168	9 043	14 410	60 606	128 468	112,0	
Total additions and alterations		R'000	22 190	63 334	55 059	196 223	403 367	105,6	
Recorded buildings completed	Total at current prices		R'000	94 636	172 467	163 441	745 034	1 048 217	40,7

1/ The percentage change between cumulative figures for 2016 and 2017.

2/ Other residential buildings include institutions for the disabled, boarding houses, hostels and tourism accommodation e.g. hotels, motels, guest-houses, holiday chalets, bed-and-breakfast accommodation and casinos.

3/ Other non-residential space includes churches, sport and recreation clubs, schools, crèches, hospitals and all other non-residential space.

4/ Other buildings include other residential buildings, non-residential buildings and internal alterations. No square metres are collected for internal alterations.

Table 22 – Buildings reported as completed to larger municipalities at current prices by type of building: Northern Cape

			Jul. 2016	Jun. 2017	Jul. 2017	Jan. - Jul. 2016	Jan. - Jul. 2017	% change 1/	
Category of building	Type of building	Measuring unit							
Residential buildings	Dwelling-houses < 80 square metres	Number	0	0	0	0	1	..	
		square metres	0	0	0	0	76	..	
		R'000	0	0	0	0	456	..	
	Dwelling-houses >= 80 square metres	Number	12	7	3	50	34	-32,0	
		square metres	1 870	1 849	413	9 298	7 363	-20,8	
		R'000	12 494	12 716	2 891	60 135	50 699	-15,7	
	Flats and townhouses	Number	0	0	2	1	17	1 600,0	
		square metres	0	0	595	149	1 928	1 194,0	
		R'000	0	0	4 784	1 028	13 449	1 208,3	
	Other residential buildings 2/	square metres	0	0	0	158	935	491,8	
		R'000	0	0	0	948	5 512	481,4	
	Total residential buildings		R'000	12 494	12 716	7 675	62 111	70 116	12,9
Non-residential buildings	Office and banking space	square metres	0	879	0	325	2 824	768,9	
		R'000	0	3 956	0	1 463	15 159	936,2	
	Shopping space	square metres	275	0	0	275	120	-56,4	
		R'000	1 238	0	0	1 238	720	-41,8	
	Industrial and warehouse space	square metres	0	374	0	0	374	..	
		R'000	0	2 842	0	0	2 842	..	
	Other non-residential buildings 3/	square metres	0	0	16 448	0	16 448	..	
		R'000	0	0	132 258	0	132 258	..	
	Total non-residential buildings		R'000	1 238	6 798	132 258	2 701	150 979	5 489,7
	Additions and alterations	Dwelling-houses	square metres	3 599	1 922	2 701	26 296	10 844	-58,8
R'000			26 822	13 815	20 791	190 173	80 856	-57,5	
Other buildings 4/		square metres	215	560	0	3 100	3 078	-0,7	
		R'000	7 548	2 932	530	31 949	23 289	-27,1	
Total additions and alterations		R'000	34 370	16 747	21 321	222 122	104 145	-53,1	
Recorded buildings completed	Total at current prices	R'000	48 102	36 261	161 254	286 934	325 240	13,4	

1/ The percentage change between cumulative figures for 2016 and 2017.

2/ Other residential buildings include institutions for the disabled, boarding houses, hostels and tourism accommodation e.g. hotels, motels, guest-houses, holiday chalets, bed-and-breakfast accommodation and casinos.

3/ Other non-residential space includes churches, sport and recreation clubs, schools, crèches, hospitals and all other non-residential space.

4/ Other buildings include other residential buildings, non-residential buildings and internal alterations. No square metres are collected for internal alterations.

Table 23 – Buildings reported as completed to larger municipalities at current prices by type of building: Free State

			Jul. 2016	Jun. 2017	Jul. 2017	Jan. - Jul. 2016	Jan. - Jul. 2017	% change 1/	
Category of building	Type of building	Measuring unit							
Residential buildings	Dwelling-houses < 80 square metres	Number	8	19	18	197	95	-51,8	
		square metres	418	1 110	838	10 878	5 231	-51,9	
		R'000	971	2 886	1 592	27 327	21 039	-23,0	
	Dwelling-houses >= 80 square metres	Number	27	11	19	196	98	-50,0	
		square metres	5 829	2 162	4 469	36 879	18 894	-48,8	
		R'000	30 304	11 142	22 884	189 227	101 899	-46,1	
	Flats and townhouses	Number	59	6	11	1 156	407	-64,8	
		square metres	7 949	543	1 695	58 626	31 973	-45,5	
		R'000	55 643	2 799	10 267	315 166	216 731	-31,2	
	Other residential buildings 2/	square metres	0	168	0	105	168	60,0	
		R'000	0	756	0	525	756	44,0	
	Total residential buildings		R'000	86 918	17 583	34 743	532 245	340 425	-36,0
	Non-residential buildings	Office and banking space	square metres	0	0	0	6 066	2 573	-57,6
R'000			0	0	0	42 462	17 649	-58,4	
Shopping space		square metres	1 060	133	0	18 668	919	-95,1	
		R'000	8 480	665	0	139 582	4 655	-96,7	
Industrial and warehouse space		square metres	3 735	0	0	40 159	1 340	-96,7	
		R'000	16 808	0	0	197 716	7 315	-96,3	
Other non-residential buildings 3/		square metres	0	0	0	0	0	..	
		R'000	0	0	0	0	0	..	
Total non-residential buildings		R'000	25 288	665	0	379 760	29 619	-92,2	
Additions and alterations		Dwelling-houses	square metres	2 779	5 626	9 588	19 333	23 089	19,4
	R'000		12 962	25 317	46 345	88 646	107 618	21,4	
	Other buildings 4/	square metres	4 601	208	25	6 127	832	-86,4	
		R'000	22 269	78 958	583	41 253	89 403	116,7	
Total additions and alterations		R'000	35 231	104 275	46 928	129 899	197 021	51,7	
Recorded buildings completed	Total at current prices		R'000	147 437	122 523	81 671	1 041 904	567 065	-45,6

1/ The percentage change between cumulative figures for 2016 and 2017.

2/ Other residential buildings include institutions for the disabled, boarding houses, hostels and tourism accommodation e.g. hotels, motels, guest-houses, holiday chalets, bed-and-breakfast accommodation and casinos.

3/ Other non-residential space includes churches, sport and recreation clubs, schools, crèches, hospitals and all other non-residential space.

4/ Other buildings include other residential buildings, non-residential buildings and internal alterations. No square metres are collected for internal alterations.

Table 24 – Buildings reported as completed to larger municipalities at current prices by type of building: KwaZulu-Natal

			Jul. 2016	Jun. 2017	Jul. 2017	Jan. - Jul. 2016	Jan. - Jul. 2017	% change 1/	
Category of building	Type of building	Measuring unit							
Residential buildings	Dwelling-houses < 80 square metres	Number	14	7	8	153	62	-59,5	
		square metres	780	403	443	8 998	3 493	-61,2	
		R'000	6 658	3 692	4 005	74 888	31 145	-58,4	
	Dwelling-houses >= 80 square metres	Number	47	73	69	420	469	11,7	
		square metres	13 275	23 559	16 720	112 574	142 682	26,7	
		R'000	105 176	244 786	151 548	923 578	1 321 667	43,1	
	Flats and townhouses	Number	47	67	147	425	871	104,9	
		square metres	9 065	12 430	21 016	74 514	106 943	43,5	
		R'000	90 322	115 203	213 930	659 464	1 020 180	54,7	
	Other residential buildings 2/	square metres	844	0	0	8 796	12 095	37,5	
		R'000	3 798	0	0	48 677	134 848	177,0	
	Total residential buildings		R'000	205 954	363 681	369 483	1 706 607	2 507 840	46,9
Non-residential buildings	Office and banking space	square metres	838	0	0	89 608	48 345	-46,0	
		R'000	3 771	0	0	780 996	497 211	-36,3	
	Shopping space	square metres	22 049	189 548	4 697	164 275	268 390	63,4	
		R'000	203 952	1 444 638	24 484	1 552 837	2 197 494	41,5	
	Industrial and warehouse space	square metres	44 422	9 003	30 766	134 774	98 696	-26,8	
		R'000	240 499	50 536	182 040	703 702	566 458	-19,5	
	Other non-residential buildings 3/	square metres	307	2 440	0	4 352	16 278	274,0	
		R'000	2 102	18 788	0	32 380	151 554	368,0	
	Total non-residential buildings		R'000	450 324	1 513 962	206 524	3 069 915	3 412 717	11,2
	Additions and alterations	Dwelling-houses	square metres	7 485	8 168	14 383	85 084	71 654	-15,8
R'000			67 036	82 757	146 262	760 483	714 381	-6,1	
Other buildings 4/		square metres	5 666	5 922	3 802	42 590	42 602	0,0	
		R'000	35 610	60 719	26 114	295 247	458 867	55,4	
Total additions and alterations		R'000	102 646	143 476	172 376	1 055 730	1 173 248	11,1	
Recorded buildings completed	Total at current prices		R'000	758 924	2 021 119	748 383	5 832 252	7 093 805	21,6

1/ The percentage change between cumulative figures for 2016 and 2017.

2/ Other residential buildings include institutions for the disabled, boarding houses, hostels and tourism accommodation e.g. hotels, motels, guest-houses, holiday chalets, bed-and-breakfast accommodation and casinos.

3/ Other non-residential space includes churches, sport and recreation clubs, schools, crèches, hospitals and all other non-residential space.

4/ Other buildings include other residential buildings, non-residential buildings and internal alterations. No square metres are collected for internal alterations.

Table 25 – Buildings reported as completed to larger municipalities at current prices by type of building: North West

			Jul. 2016	Jun. 2017	Jul. 2017	Jan. - Jul. 2016	Jan. - Jul. 2017	% change 1/	
Category of building	Type of building	Measuring unit							
Residential buildings	Dwelling-houses < 80 square metres	Number	41	49	10	328	264	-19,5	
		square metres	2 514	2 906	580	20 059	15 376	-23,3	
		R'000	10 056	14 422	2 560	74 093	68 145	-8,0	
	Dwelling-houses >= 80 square metres	Number	52	71	37	903	370	-59,0	
		square metres	11 366	17 512	9 132	143 351	76 744	-46,5	
		R'000	55 962	93 924	53 296	661 796	404 082	-38,9	
	Flats and townhouses	Number	4	18	19	377	169	-55,2	
		square metres	214	2 734	2 120	34 929	15 211	-56,5	
		R'000	922	15 250	13 021	169 079	89 696	-47,0	
	Other residential buildings 2/	square metres	0	0	0	0	0	..	
		R'000	0	0	0	0	0	..	
	Total residential buildings		R'000	66 940	123 596	68 877	904 968	561 923	-37,9
Non-residential buildings	Office and banking space	square metres	1 926	5 365	0	7 032	6 983	-0,7	
		R'000	11 556	31 886	0	36 804	39 978	8,6	
	Shopping space	square metres	0	1 317	0	11 949	18 232	52,6	
		R'000	0	7 105	0	63 506	94 049	48,1	
	Industrial and warehouse space	square metres	0	5 040	6 188	2 940	14 038	377,5	
		R'000	0	25 200	30 009	16 110	68 173	323,2	
	Other non-residential buildings 3/	square metres	628	0	0	6 172	1 191	-80,7	
		R'000	3 768	0	0	29 492	5 955	-79,8	
	Total non-residential buildings		R'000	15 324	64 191	30 009	145 912	208 155	42,7
	Additions and alterations	Dwelling-houses	square metres	425	2 639	498	62 803	26 945	-57,1
R'000			1 816	11 664	2 889	267 450	125 925	-52,9	
Other buildings 4/		square metres	0	5 611	993	5 524	9 888	79,0	
		R'000	858	37 522	5 578	25 894	60 555	133,9	
Total additions and alterations		R'000	2 674	49 186	8 467	293 344	186 480	-36,4	
Recorded buildings completed	Total at current prices		R'000	84 938	236 973	107 353	1 344 224	956 558	-28,8

1/ The percentage change between cumulative figures for 2016 and 2017.

2/ Other residential buildings include institutions for the disabled, boarding houses, hostels and tourism accommodation e.g. hotels, motels, guest-houses, holiday chalets, bed-and-breakfast accommodation and casinos.

3/ Other non-residential space includes churches, sport and recreation clubs, schools, crèches, hospitals and all other non-residential space.

4/ Other buildings include other residential buildings, non-residential buildings and internal alterations. No square metres are collected for internal alterations.

Table 26 – Buildings reported as completed to larger municipalities at current prices by type of building: Gauteng

			Jul. 2016	Jun. 2017	Jul. 2017	Jan. - Jul. 2016	Jan. - Jul. 2017	% change 1/	
Category of building	Type of building	Measuring unit							
Residential buildings	Dwelling-houses < 80 square metres	Number	408	852	409	4 320	3 986	-7,7	
		square metres	21 292	41 638	23 613	208 313	197 773	-5,1	
		R'000	110 751	164 578	118 045	798 129	843 459	5,7	
	Dwelling-houses >= 80 square metres	Number	316	345	272	2 612	2 037	-22,0	
		square metres	104 959	112 595	82 967	754 428	676 662	-10,3	
		R'000	784 801	865 455	666 608	5 539 182	5 232 548	-5,5	
	Flats and townhouses	Number	219	397	478	2 785	4 677	67,9	
		square metres	22 535	39 963	49 699	280 507	413 656	47,5	
		R'000	160 485	317 653	446 714	2 283 821	3 507 337	53,6	
	Other residential buildings 2/	square metres	1 805	7 165	847	6 418	128 661	1 904,7	
		R'000	13 949	47 383	4 138	52 536	1 359 092	2 487,0	
	Total residential buildings		R'000	1 069 986	1 395 069	1 235 505	8 673 668	10 942 436	26,2
Non-residential buildings	Office and banking space	square metres	26 371	40 921	3 334	174 907	160 137	-8,4	
		R'000	255 478	406 692	27 511	1 642 727	1 650 018	0,4	
	Shopping space	square metres	0	4 990	2 715	74 349	103 950	39,8	
		R'000	0	46 159	26 808	584 436	851 100	45,6	
	Industrial and warehouse space	square metres	37 384	47 571	95 143	289 784	339 523	17,2	
		R'000	186 719	249 743	462 693	1 455 981	1 714 101	17,7	
	Other non-residential buildings 3/	square metres	3 443	21 447	5 506	98 601	48 854	-50,5	
		R'000	20 661	165 394	49 912	614 656	386 340	-37,1	
	Total non-residential buildings		R'000	462 858	867 988	566 924	4 297 800	4 601 559	7,1
	Additions and alterations	Dwelling-houses	square metres	14 156	32 197	16 089	136 392	137 298	0,7
R'000			102 291	227 796	123 465	938 870	1 002 148	6,7	
Other buildings 4/		square metres	4 981	4 064	1 212	48 907	44 467	-9,1	
		R'000	44 235	35 871	15 643	466 721	403 943	-13,5	
Total additions and alterations		R'000	146 526	263 667	139 108	1 405 591	1 406 091	0,0	
Recorded buildings completed	Total at current prices		R'000	1 679 370	2 526 724	1 941 537	14 377 059	16 950 086	17,9

1/ The percentage change between cumulative figures for 2016 and 2017.

2/ Other residential buildings include institutions for the disabled, boarding houses, hostels and tourism accommodation e.g. hotels, motels, guest-houses, holiday chalets, bed-and-breakfast accommodation and casinos.

3/ Other non-residential space includes churches, sport and recreation clubs, schools, crèches, hospitals and all other non-residential space.

4/ Other buildings include other residential buildings, non-residential buildings and internal alterations. No square metres are collected for internal alterations.

Table 27 – Buildings reported as completed to larger municipalities at current prices by type of building: Mpumalanga

			Jul. 2016	Jun. 2017	Jul. 2017	Jan. - Jul. 2016	Jan. - Jul. 2017	% change 1/	
Category of building	Type of building	Measuring unit							
Residential buildings	Dwelling-houses < 80 square metres	Number	39	35	56	641	416	-35,1	
		square metres	2 116	1 553	3 596	31 504	20 204	-35,9	
		R'000	10 127	7 024	19 937	122 753	84 502	-31,2	
	Dwelling-houses >= 80 square metres	Number	72	58	51	514	240	-53,3	
		square metres	16 191	11 704	8 731	115 996	52 682	-54,6	
		R'000	81 880	59 689	45 736	530 782	258 009	-51,4	
	Flats and townhouses	Number	17	0	0	140	192	37,1	
		square metres	1 134	0	0	9 555	20 191	111,3	
		R'000	5 170	0	0	42 848	93 859	119,1	
	Other residential buildings 2/	square metres	0	0	0	1 001	0	..	
		R'000	0	0	0	4 505	0	..	
	Total residential buildings		R'000	97 177	66 713	65 673	700 888	436 370	-37,7
Non-residential buildings	Office and banking space	square metres	2 178	325	0	8 655	325	-96,2	
		R'000	10 899	1 463	0	46 340	1 463	-96,8	
	Shopping space	square metres	0	612	1 225	8 271	16 005	93,5	
		R'000	0	3 366	6 533	51 226	76 426	49,2	
	Industrial and warehouse space	square metres	9 323	0	0	22 988	11 964	-48,0	
		R'000	53 629	0	0	116 072	57 907	-50,1	
	Other non-residential buildings 3/	square metres	0	373	0	5 626	2 345	-58,3	
		R'000	0	1 865	0	24 555	11 728	-52,2	
	Total non-residential buildings		R'000	64 528	6 694	6 533	238 193	147 524	-38,1
	Additions and alterations	Dwelling-houses	square metres	7 726	2 380	1 212	45 618	20 236	-55,6
R'000			32 831	11 365	6 548	193 260	90 969	-52,9	
Other buildings 4/		square metres	251	0	0	10 645	1 700	-84,0	
		R'000	1 440	3 088	0	59 744	18 861	-68,4	
Total additions and alterations		R'000	34 271	14 453	6 548	253 004	109 830	-56,6	
Recorded buildings completed	Total at current prices	R'000	195 976	87 860	78 754	1 192 085	693 724	-41,8	

1/ The percentage change between cumulative figures for 2016 and 2017.

2/ Other residential buildings include institutions for the disabled, boarding houses, hostels and tourism accommodation e.g. hotels, motels, guest-houses, holiday chalets, bed-and-breakfast accommodation and casinos.

3/ Other non-residential space includes churches, sport and recreation clubs, schools, crèches, hospitals and all other non-residential space.

4/ Other buildings include other residential buildings, non-residential buildings and internal alterations. No square metres are collected for internal alterations.

Table 28 – Buildings reported as completed to larger municipalities at current prices by type of building: Limpopo

			Jul. 2016	Jun. 2017	Jul. 2017	Jan. - Jul. 2016	Jan. - Jul. 2017	% change 1/	
Category of building	Type of building	Measuring unit							
Residential buildings	Dwelling-houses < 80 square metres	Number	8	208	20	102	567	455,9	
		square metres	475	8 500	1 285	6 105	25 553	318,6	
		R'000	2 375	17 726	6 718	30 432	62 484	105,3	
	Dwelling-houses >= 80 square metres	Number	21	19	27	169	146	-13,6	
		square metres	5 687	4 639	5 356	42 495	37 430	-11,9	
		R'000	27 839	23 213	28 682	203 500	188 541	-7,4	
	Flats and townhouses	Number	20	10	10	161	116	-28,0	
		square metres	2 294	993	1 186	14 489	12 836	-11,4	
		R'000	11 406	4 965	6 274	73 128	62 898	-14,0	
	Other residential buildings 2/	square metres	0	0	1 051	172	6 803	3 855,2	
		R'000	0	0	4 474	860	33 234	3 764,4	
	Total residential buildings		R'000	41 620	45 904	46 148	307 920	347 157	12,7
Non-residential buildings	Office and banking space	square metres	948	0	0	1 528	1 322	-13,5	
		R'000	4 740	0	0	7 596	6 714	-11,6	
	Shopping space	square metres	0	0	1 320	0	1 478	..	
		R'000	0	0	7 263	0	8 053	..	
	Industrial and warehouse space	square metres	0	568	20 033	3 888	25 814	563,9	
		R'000	0	2 840	99 347	19 210	128 077	566,7	
	Other non-residential buildings 3/	square metres	0	1 094	0	844	1 439	70,5	
		R'000	0	5 470	0	4 260	7 195	68,9	
	Total non-residential buildings		R'000	4 740	8 310	106 610	31 066	150 039	383,0
	Additions and alterations	Dwelling-houses	square metres	443	252	72	4 079	1 919	-53,0
R'000			2 069	1 066	334	19 549	9 075	-53,6	
Other buildings 4/		square metres	246	160	0	476	2 373	398,5	
		R'000	1 779	1 332	0	7 443	15 202	104,2	
Total additions and alterations		R'000	3 848	2 398	334	26 992	24 277	-10,1	
Recorded buildings completed	Total at current prices		R'000	50 208	56 612	153 092	365 978	521 473	42,5

1/ The percentage change between cumulative figures for 2016 and 2017.

2/ Other residential buildings include institutions for the disabled, boarding houses, hostels and tourism accommodation e.g. hotels, motels, guest-houses, holiday chalets, bed-and-breakfast accommodation and casinos.

3/ Other non-residential space includes churches, sport and recreation clubs, schools, crèches, hospitals and all other non-residential space.

4/ Other buildings include other residential buildings, non-residential buildings and internal alterations. No square metres are collected for internal alterations.

Explanatory notes

- Introduction**
- 1 Statistics South Africa (Stats SA) conducts a monthly building statistics survey collecting information regarding building plans passed and buildings completed, financed by the private sector, from the largest local government institutions in South Africa. According to these institutions, they are not always notified about low-cost housing projects and, therefore, do not include the bulk of low-cost dwelling-houses in their reporting. Data regarding subsidised low-cost dwelling-houses can be obtained from the Department of Human Settlements.
 - 2 In order to improve timeliness of the publication, some information for the current month has been estimated due to late submission by respondents. These estimates will be revised in the next statistical release(s) as soon as actual information is available.
- Purpose of the survey**
- 3 The monthly survey data are used in monitoring the state of economy and formulation of economic policy. Furthermore, the results are important inputs to estimate the gross domestic product (GDP) and to calculate the Composite Leading Business Cycle Indicator. The data are extensively used by the private sector.
- Scope of the survey**
- 4 This survey covers local government institutions conducting activities for the private sector regarding -
 - passing of building plans; and
 - final inspection of completed buildings.
- Classification**
- 5 Building activities are classified in division 5 according to the 1993 edition of the *Standard Industrial Classification of all Economic Activities, (SIC) Fifth Edition, Report No. 09-90-02*. The SIC is based on the 1990 *International Standard Industrial Classification of all Economic Activities (ISIC)* with suitable adaptations for local conditions.
- Collection rate**
- 6 The preliminary collection rate for the survey on building statistics for July 2017 was 94,5%. The improved collection rate for June 2017 was 93,6%.
- Statistical unit**
- 7 The statistical unit for the collection of information is a local government institution. Local government institutions include district municipalities, metropolitan municipalities and local municipalities.
- Survey methodology and design**
- 8 Stats SA conducts a monthly survey of metropolitan municipalities and large local municipalities on building plans passed and buildings completed. An annual survey of the remaining municipalities is conducted regarding buildings completed. The monthly survey represents approximately 85 percent of the total value of buildings completed. Information regarding building plans passed and buildings completed for the private sector is collected by mail, fax and telephone.
- Constant prices**
- 9 The value of building plans passed and buildings completed at constant prices measures building activities in terms of ruling prices in a specific base year, which is currently 2015. The value of building plans passed at constant prices for each month is obtained by deflating the values at current prices with a price index known as the 'lump sum domestic buildings' as published in statistical release P0151: *Contract Price Adjustment Provisions (CPAP) Work Groups and Selected Materials Indices*. In order to be applicable, these indices (base February 1991=100) are converted to the base year 2015=100.

- Seasonal adjustment** **10** Seasonally adjusted estimates of building plans passed and buildings completed are generated each month, using the X-12-ARIMA Seasonal Adjustment Program developed by US Bureau of the Census Economic Research and Analyses Division, 1968.
- 11** Seasonal adjustment is a means of removing the estimated effects of normal seasonal variation from the series so that the effects of other influences on the series can be more clearly recognised. Seasonal adjustment does not aim to remove irregular or non-seasonal influences which may be present in any particular month. Influences that are volatile or unsystematic can still make it difficult to interpret the movement of the series even after adjustment for seasonal variations. Therefore, the month-to-month movements of seasonally adjusted estimates may not be reliable indicators of trend behaviour. The X-12-ARIMA procedure for building statistics is described in more detail on the Stats SA website at [Click to download building statistics seasonal adjustment May 2017](#)
- Trend cycle** **12** The trend is a long-term pattern or movement of a time series. The X-12-ARIMA Seasonal Adjustment Program is used for smoothing seasonally adjusted data.
- Revised figures** **13** Revised figures are due to late submission of data to Stats SA, or to respondents reporting revisions or corrections to their figures. Figures for the latest two years are therefore preliminary. Data are edited at municipal level.
- 14** Once a year the annual statistical release P5041.3: *Selected building statistics of the private sector as reported by local government institutions* is published with the revised and updated information at provincial and municipal level for the previous calendar year. Due to this comprehensive revision, the monthly statistical release P5041.1 reflects provincial revision where applicable.
- Related publications** **15** Users may also wish to refer to the following publications:
- P5041.3: *Selected building statistics of the private sector as reported by local government institutions* issued annually.
 - P9101.2: *Actual and expected expenditure on construction by the public sector per statistical region* issued annually.
 - *Building Statistics* (Report No. 50-11-01) issued annually.
- Rounding-off of figures** **16** Where necessary, the figures in the tables have been rounded off to the nearest digit shown.

Symbols and abbreviations

17	..	no meaningful percentage change between two specified periods available since either one or both of the totals are nil
	0	nil or figure too small to publish
	*	revised
	Stats SA	Statistics South Africa
	SIC	Standard Industrial Classification of all Economic Activities
	ISIC	International Standard Industrial Classification of all Economic Activities

Glossary

Additions and alterations	Extensions to existing buildings as well as internal and external alterations of existing buildings.
Blocks of flats	High-density housing consisting of a number of self-contained dwelling-units, each with at least one living-room together with a kitchen and bathroom, conjoined to similar units in one building.
Dwelling-house	A free-standing, complete structure on a separate stand or a self-contained dwelling-unit, e.g. granny flat, on the same premises as an existing residence. Out-buildings and garages are included.
Local government institutions	Include – <ul style="list-style-type: none"> • District municipalities; • Metropolitan municipalities; and • Local municipalities.
Municipality	A generic term describing the “unit” of government in the local spheres responsible for local government in a geographically demarcated area and including district, metropolitan and local municipalities. It is an institution consisting of a municipal council (elected political representatives) and municipal administration (appointed officials).
District municipality	A municipality that has municipal executive and legislative authority in an area that includes more than one municipality, and which is described in section 155(1) of the Constitution as a category C municipality (refer to Local Government: Municipal Structure Act, 1998 (Act No. 117 of 1998)).
Metropolitan municipality	A municipality that has municipal executive and legislative authority in an area that includes more than one municipality, and which is described in section 155(1) of the Constitution as a category A municipality (refer to Local Government: Municipal Structure Act, 1998 (Act No. 117 of 1998)).
Local municipality	A municipality that shares municipal executive and legislative authority in its area with a district municipality within whose area it falls, which is described in section 155(1) of the constitution as a category B municipality.
Non-residential buildings	Factories and commercial, financial and other office buildings, as well as other buildings not used for residential purposes, such as churches, halls, clubs, schools and hospitals.
Other residential buildings	Institutions for the disabled, boarding houses, old people’s homes, hostels, hotels, motels, guesthouses, holiday chalets, bed-and-breakfast accommodation, entertainment centres and casinos.
Percentage change	<p>When using monthly actual values, the percentage change is the change in actual values of building activities (building plans passed or buildings completed) of the relevant month compared with the actual values of building activities (building plans passed or buildings completed) of the same month in the previous year expressed as a percentage.</p> <p>When using annual actual values, the percentage change is the change in the actual values of building activities (building plans passed or buildings completed) of the relevant year compared with the actual values of building activities (building plans passed or buildings completed) of the previous year expressed as a percentage.</p> <p>When using seasonally adjusted values, the percentage change is the change in the seasonally adjusted values of building activities (building plans passed or buildings completed) of the relevant month compared with the seasonally adjusted values of building activities (building plans passed or buildings completed) of the previous month expressed as a percentage.</p>

Reference period	One calendar month.
Residential buildings	Buildings that are used primarily as residences. Includes dwelling-houses, flats, townhouses and other residential buildings.
Townhouses	Multiple, medium-density dwelling-units including cluster housing, group housing, simplexes, duplexes, triplexes and other similar dwelling-units which are usually grouped together, with one level of each unit on ground level. This category excludes blocks of flats.

Technical enquiries

Suzzie Mnguni Telephone number: (012) 310 8134
Email: suzziemn@statssa.gov.za

Nicolai Claassen Telephone number: (012) 310 8007
Email: nicolaic@statssa.gov.za

General information

Stats SA publishes approximately 300 different statistical releases each year. It is not economically viable to produce them in more than one of South Africa's eleven official languages. Since the releases are used extensively, not only locally but also by international economic and social-scientific communities, Stats SA releases are published in English.

Stats SA has copyright on this publication. Users may apply the information as they wish, provided that they acknowledge Stats SA as the source of the basic data wherever they process, apply, utilise, publish or distribute the data and also that they specify that the relevant application and analysis (where applicable) result from their own processing of the data.

Advance release calendar

An advance release calendar is disseminated on www.statssa.gov.za

Stats SA products

A complete set of Stats SA publications is available at the Stats SA Library and the following libraries:

National Library of South Africa, Pretoria Division
National Library of South Africa, Cape Town Division
Natal Society Library, Pietermaritzburg
Library of Parliament, Cape Town
Bloemfontein Public Library
Johannesburg Public Library
Eastern Cape Library Services, King William's Town
Central Regional Library, Polokwane
Central Reference Library, Mbombela
Central Reference Collection, Kimberley
Central Reference Library, Mmabatho

Stats SA also provides a subscription service.

Electronic services

A large range of data is available via online services. For more details about our electronic services, contact Stats SA's user information service at (012) 310 8600.

You can visit us on the Internet at: www.statssa.gov.za

General enquiries

User information services Telephone number: (012) 310 8600
Email address: info@statssa.gov.za

Postal address Private Bag X44, Pretoria, 0001

Produced by Stats SA