

STATISTICAL RELEASE
P5041.1

**Selected building statistics of the private sector
as reported by local government institutions
(Preliminary)**

February 2018

**Embargoed until:
19 April 2018
13:00**

ENQUIRIES:
Nicolai Claassen
Tel: (012) 310 8007

FORTHCOMING ISSUE:
March 2018

EXPECTED RELEASE DATE:
17 May 2018

www.statssa.gov.za
info@statssa.gov.za
T +27 12 310 8911
F +27 12 310 8500

Private Bag X44, Pretoria, 0001, South Africa
ISibalo House, Koch Street, Salvokop, Pretoria, 0002



Contents

Results for January to February 2018.....	3
Tables	
Table 1 Value and percentage change of recorded building plans passed by larger municipalities at current prices by type of building	9
Table 2 Seasonally adjusted value and percentage change of recorded building plans passed by larger municipalities at current prices by type of building	10
Table 3 Value and percentage change of recorded building plans passed by larger municipalities at constant 2015 prices by type of building	11
Table 4 Seasonally adjusted value and percentage change of recorded building plans passed by larger municipalities at constant 2015 prices by type of building	12
Table 5 Value and percentage change of buildings reported as completed to larger municipalities at current prices by type of building	13
Table 6 Seasonally adjusted value and percentage change of buildings reported as completed to larger municipalities at current prices by type of building	14
Table 7 Value and percentage change of buildings reported as completed to larger municipalities at constant 2015 prices by type of building	15
Table 8 Seasonally adjusted value and percentage change of buildings reported as completed to larger municipalities at constant 2015 prices by type of building	16
Table 9 Recorded building plans passed by larger municipalities at current prices by type of building: South Africa	17
Table 10 Recorded building plans passed by larger municipalities at current prices by type of building: Western Cape.....	18
Table 11 Recorded building plans passed by larger municipalities at current prices by type of building: Eastern Cape.....	19
Table 12 Recorded building plans passed by larger municipalities at current prices by type of building: Northern Cape	20
Table 13 Recorded building plans passed by larger municipalities at current prices by type of building: Free State.....	21
Table 14 Recorded building plans passed by larger municipalities at current prices by type of building: KwaZulu-Natal	22
Table 15 Recorded building plans passed by larger municipalities at current prices by type of building: North West.....	23
Table 16 Recorded building plans passed by larger municipalities at current prices by type of building: Gauteng.....	24
Table 17 Recorded building plans passed by larger municipalities at current prices by type of building: Mpumalanga.....	25
Table 18 Recorded building plans passed by larger municipalities at current prices by type of building: Limpopo.....	26
Table 19 Buildings reported as completed to larger municipalities at current prices by type of building: South Africa.....	27
Table 20 Buildings reported as completed to larger municipalities at current prices by type of building: Western Cape.....	28
Table 21 Buildings reported as completed to larger municipalities at current prices by type of building: Eastern Cape.....	29
Table 22 Buildings reported as completed to larger municipalities at current prices by type of building: Northern Cape	30
Table 23 Buildings reported as completed to larger municipalities at current prices by type of building: Free State.....	31
Table 24 Buildings reported as completed to larger municipalities at current prices by type of building: KwaZulu-Natal	32
Table 25 Buildings reported as completed to larger municipalities at current prices by type of building: North West.....	33

Table 26	Buildings reported as completed to larger municipalities at current prices by type of building: Gauteng	34
Table 27	Buildings reported as completed to larger municipalities at current prices by type of building: Mpumalanga	35
Table 28	Buildings reported as completed to larger municipalities at current prices by type of building: Limpopo	36
Explanatory notes		37
Glossary		40
Technical enquiries		41
General information		42

Results for January to February 2018

**Table A – Recorded building plans passed by larger municipalities at current prices:
January to February 2017 versus January to February 2018**

Estimates at current prices	January to February 2017	January to February 2018	Difference in value between January to February 2017 and January to February 2018	% change between January to February 2017 and January to February 2018
	1/	1/		
	R'000	R'000	R'000	
Residential buildings	7 700 873	8 153 445	452 572	5,9
-Dwelling-houses	4 365 338	4 986 908	621 570	14,2
-Flats and townhouses	3 292 605	3 115 149	-177 456	-5,4
-Other residential buildings	42 930	51 388	8 458	19,7
Non-residential buildings	4 171 766	4 334 896	163 130	3,9
Additions and alterations	3 864 162	4 574 043	709 881	18,4
Total	15 736 801	17 062 384	1 325 583	8,4

1/ 2017 and 2018 figures should be regarded as preliminary because of possible backlogs and incomplete reporting by municipalities.

Total value of recorded building plans passed at current prices

The value of recorded building plans passed (at current prices) increased by 8,4% (R1 325,6 million) during January to February 2018 compared with January to February 2017.

Increases were recorded for additions and alterations (18,4% or R709,9 million), residential buildings (5,9% or R452,6 million) and non-residential buildings (3,9% or R163,1 million) – see Table A.

**Table B – Recorded building plans passed by larger municipalities aggregated to provincial level:
January to February 2017 versus January to February 2018**

Estimates at current prices	January to February 2017	January to February 2018	% contribution to the total value of building plans passed during January to February 2017	% change between January to February 2017 and January to February 2018	Contribution (% points) to the % change in the value of building plans passed between January to February 2017 and January to February 2018	Difference in value between January to February 2017 and January to February 2018
	1/	1/				
	R'000	R'000				R'000
Western Cape	4 322 734	5 298 089	27,5	22,6	6,2	975 355
Eastern Cape	743 600	1 170 278	4,7	57,4	2,7	426 678
Northern Cape	82 992	242 480	0,5	192,2	1,0	159 488
Free State	550 380	765 128	3,5	39,0	1,4	214 748
KwaZulu-Natal	3 010 750	3 265 208	19,1	8,5	1,6	254 458
North West	823 287	589 879	5,2	-28,4	-1,5	-233 408
Gauteng	5 448 292	4 866 973	34,6	-10,7	-3,7	-581 319
Mpumalanga	398 121	593 890	2,5	49,2	1,2	195 769
Limpopo	356 645	270 459	2,3	-24,2	-0,5	-86 186
Total	15 736 801	17 062 384	100,0	8,4	8,4	1 325 583

1/ 2017 and 2018 figures should be regarded as preliminary because of possible backlogs and incomplete reporting by municipalities.

2/ The contribution (percentage points) is calculated by multiplying the percentage change of each province between January to February 2017 and January to February 2018 by the percentage contribution of the corresponding province to the total value of building plans passed during January to February 2017, divided by 100.

The largest positive contributions to the total increase of 8,4% (R1 325,6 million) were made by Western Cape (contributing 6,2 percentage points or R975,4 million) and Eastern Cape (contributing 2,7 percentage points or R426,7 million). Gauteng (contributing -3,7 percentage points or -R581,3 million) was the largest negative contributor – see Table B.

Table C – Recorded building plans passed by larger municipalities at constant 2015 prices: January to February 2017 versus January to February 2018

Estimates at constant 2015 prices	January to February 2017	January to February 2018	Difference in value between January to February 2017 and January to February 2018	% change between January to February 2017 and January to February 2018
	1/	1/	R'000	
	R'000	R'000	R'000	
Residential buildings	6 970 998	7 083 793	112 795	1,6
Non-residential buildings	3 777 565	3 766 200	-11 365	-0,3
Additions and alterations	3 498 690	3 973 973	475 283	13,6
Total	14 247 253	14 823 966	576 713	4,0

1/ 2017 and 2018 figures should be regarded as preliminary because of possible backlogs and incomplete reporting by municipalities.

Real value of recorded building plans passed

The real value of recorded building plans passed (at constant 2015 prices) increased by 4,0% (R576,7 million) year-on-year during January to February 2018. Increases were recorded for additions and alterations (13,6% or R475,3 million) and residential buildings (1,6% or R112,8 million) – see Table C.

Table D – Seasonally adjusted three-monthly key figures regarding recorded building plans passed by larger municipalities at constant 2015 prices

Seasonally adjusted estimates at constant 2015 prices	September to November 2017	December 2017 to February 2018	% change between September to November 2017 and December 2017 to February 2018
	R'000	R'000	
Residential buildings	11 578 355	12 410 464	7,2
Non-residential buildings 1/	6 384 619	5 970 785	-6,5
Additions and alterations	6 735 367	6 777 532	0,6
Total	24 698 341	25 158 781	1,9

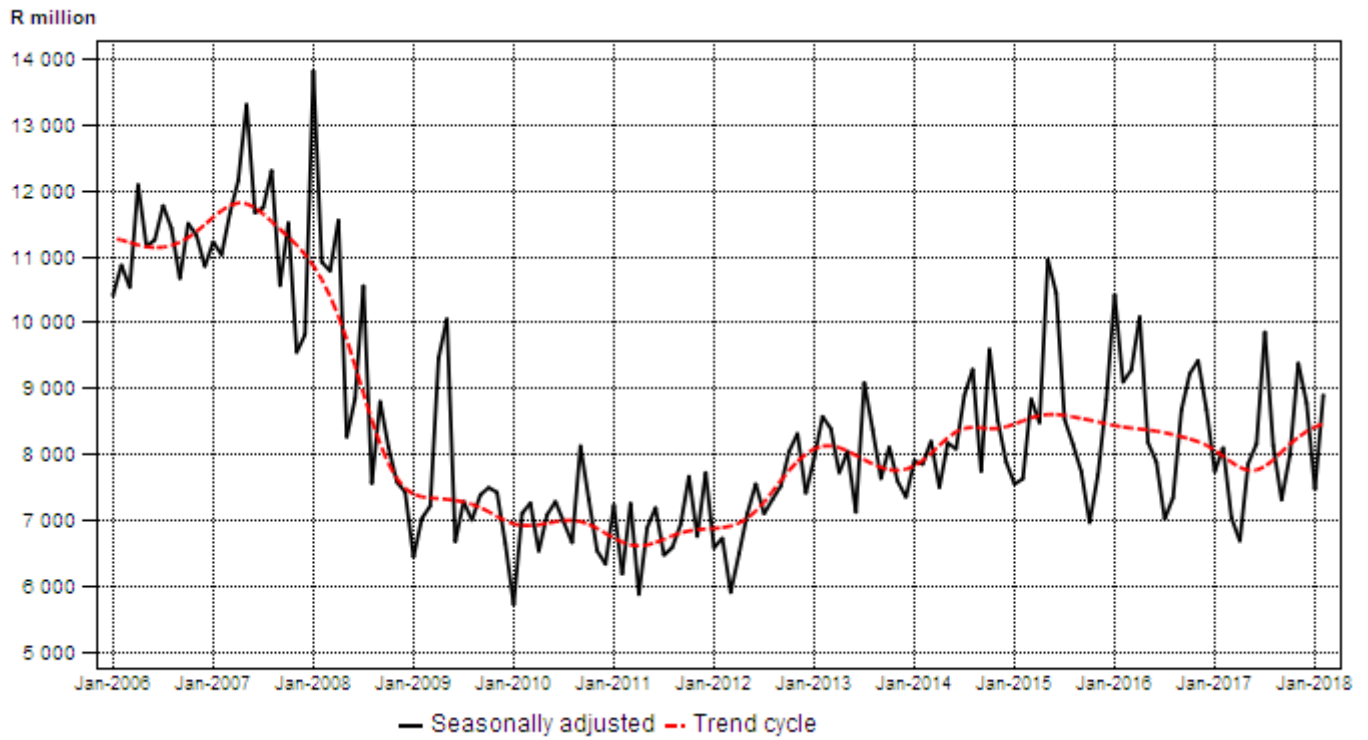
1/ Not seasonally adjusted because the presence of seasonality is not significant. See notes 10 and 11 on page 38.

Seasonally adjusted real value of recorded building plans passed

The seasonally adjusted real value of recorded building plans passed increased by 1,9% in the three months ended February 2018 compared with the previous three months. Residential buildings rose by 7,2% while non-residential buildings fell by 6,5% – see Table D.

Figure 1 – Real value of recorded building plans passed by larger municipalities

Constant 2015 prices



**Table E – Buildings reported as completed to larger municipalities at current prices:
January to February 2017 versus January to February 2018**

Estimates at current prices	January to February 2017	January to February 2018	Difference in value between January to February 2017 and January to February 2018	% change between January to February 2017 and January to February 2018
	1/	1/	R'000	
	R'000	R'000	R'000	
Residential buildings	5 346 756	5 273 096	-73 660	-1,4
-Dwelling-houses	3 215 390	3 094 894	-120 496	-3,7
-Flats and townhouses	1 761 257	2 138 485	377 228	21,4
-Other residential buildings	370 109	39 717	-330 392	-89,3
Non-residential buildings	2 117 867	2 328 453	210 586	9,9
Additions and alterations	1 595 095	1 845 101	250 006	15,7
Total	9 059 718	9 446 650	386 932	4,3

1/ 2017 and 2018 figures should be regarded as preliminary because of possible backlogs and incomplete reporting by municipalities.

Total value of buildings reported as completed at current prices

The value of buildings reported as completed (at current prices) increased by 4,3% (R386,9 million) during January to February 2018 compared with January to February 2017.

Increases were recorded for additions and alterations (15,7% or R250,0 million) and non-residential buildings (9,9% or R210,6 million). A decrease was recorded for residential buildings (-1,4% or -R73,7 million) – see Table E.

**Table F – Buildings reported as completed to larger municipalities aggregated to provincial level:
January to February 2017 versus January to February 2018**

Estimates at current prices	January to February 2017	January to February 2018	% contribution to the total value of buildings completed during January to February 2017	% change between January to February 2017 and January to February 2018	Contribution (% points) to the % change in the value of buildings completed between January to February 2017 and January to February 2018	Difference in value between January to February 2017 and January to February 2018
	1/	1/				
Western Cape	2 491 784	2 510 481	27,5	0,8	0,2	18 697
Eastern Cape	229 607	275 849	2,5	20,1	0,5	46 242
Northern Cape	58 290	45 655	0,6	-21,7	-0,1	-12 635
Free State	49 390	233 594	0,5	373,0	2,0	184 204
KwaZulu-Natal	1 172 523	1 060 963	12,9	-9,5	-1,2	-111 560
North West	170 694	563 475	1,9	230,1	4,3	392 781
Gauteng	4 499 392	4 466 626	49,7	-0,7	-0,4	-32 766
Mpumalanga	271 758	190 591	3,0	-29,9	-0,9	-81 167
Limpopo	116 280	99 416	1,3	-14,5	-0,2	-16 864
Total	9 059 718	9 446 650	100,0	4,3	4,3	386 932

1/ 2017 and 2018 figures should be regarded as preliminary because of possible backlogs and incomplete reporting by municipalities.

2/ The contribution (percentage points) is calculated by multiplying the percentage change of each province between January to February 2017 and January to February 2018 by the percentage contribution of the corresponding province to the total value of buildings completed during January to February 2017, divided by 100.

Four provinces reported year-on-year increases in the value of buildings completed during January to February 2018. The largest contributions were recorded for North West (contributing 4,3 percentage points or R392,8 million) and Free State (contributing 2,0 percentage points or R184,2 million) – see Table F.

Table G – Buildings reported as completed to larger municipalities at constant 2015 prices: January to February 2017 versus January to February 2018

Estimates at constant 2015 prices	January to February 2017	January to February 2018	Difference in value between January to February 2017 and January to February 2018	% change between January to February 2017 and January to February 2018
	1/	1/		
	R'000	R'000	R'000	
Residential buildings	4 841 078	4 581 317	-259 761	-5,4
Non-residential buildings	1 920 124	2 022 983	102 859	5,4
Additions and alterations	1 444 574	1 603 041	158 467	11,0
Total	8 205 776	8 207 341	1 565	0,0

1/ 2017 and 2018 figures should be regarded as preliminary because of possible backlogs and incomplete reporting by municipalities.

Real value of buildings reported as completed

The real value of buildings reported as completed (at constant 2015 prices) was flat year-on-year during January to February 2018. Increases were recorded for additions and alterations (11,0% or R158,5 million) and non-residential buildings (5,4% or R102,9 million). A decrease was recorded for residential buildings (-5,4% or -R259,8 million) – see Table G.

Table H – Seasonally adjusted three-monthly key figures regarding buildings reported as completed to larger municipalities at constant 2015 prices

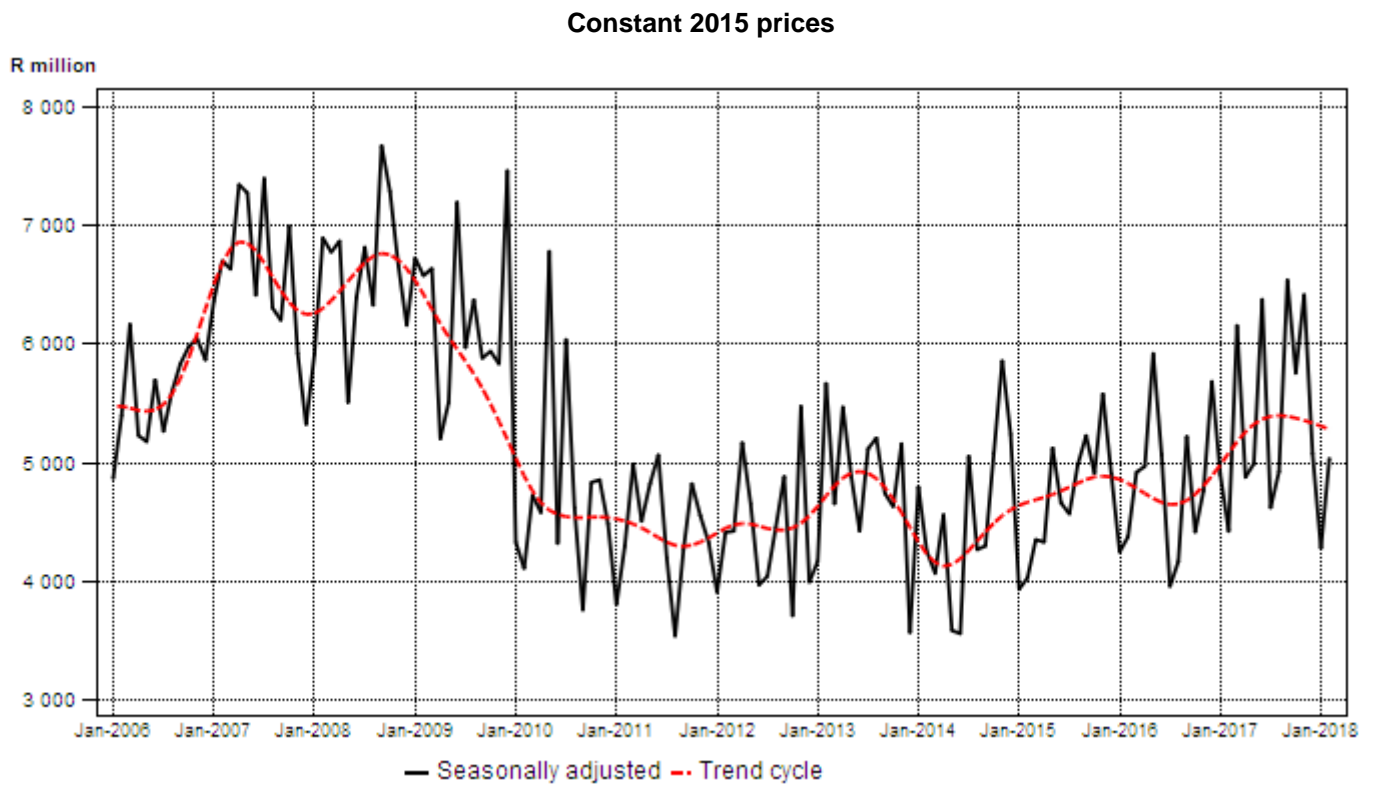
Seasonally adjusted estimates at constant 2015 prices	September to November 2017	December 2017 to February 2018	% change between September to November 2017 and December 2017 to February 2018
	R'000	R'000	
Residential buildings	7 812 002	8 877 731	13,6
Non-residential buildings 1/	8 260 069	2 773 632	-66,4
Additions and alterations	2 637 483	2 734 463	3,7
Total	18 709 554	14 385 826	-23,1

1/ Not seasonally adjusted because the presence of seasonality is not significant. See notes 10 and 11 on page 38.

Seasonally adjusted real value of buildings reported as completed

The seasonally adjusted real value of buildings reported as completed decreased by 23,1% in the three months ended February 2018 compared with the previous three months. A decrease was recorded for non-residential buildings (-66,4%). Increases were recorded for residential buildings (13,6%) and additions and alterations (3,7%) – see Table H.

Figure 2 – Real value of buildings reported as completed to larger municipalities



Risenga Maluleke
Statistician-General

Table 1 – Value and percentage change of recorded building plans passed by larger municipalities at current prices by type of building

Year and month 2/		Residential buildings		Non-residential buildings		Additions and alterations		Total	
		R'000	% change 1/	R'000	% change 1/	R'000	% change 1/	R'000	% change 1/
2017	January	3 161 447	6,2	1 894 083	-58,3	1 703 058	17,3	6 758 588	-24,7
	February	4 539 426	-1,2	2 277 683	-14,5	2 161 104	1,7	8 978 213	-4,3
	March	4 237 489	-7,9	1 675 826	-36,7	2 277 738	10,8	8 191 053	-12,0
	April	3 657 581	-33,3	1 002 693	-64,7	1 983 859	-16,9	6 644 133	-38,0
	May	4 647 680	10,4	1 983 293	-12,0	2 442 934	9,0	9 073 907	4,3
	June	4 775 996	-5,0	2 192 921	40,6	2 642 793	9,4	9 611 710	6,8
	July	5 658 090	50,4	2 811 554	103,3	2 626 367	3,7	11 096 011	44,5
	August	4 149 479	-6,2	2 874 162	60,0	2 958 451	29,1	9 982 092	17,3
	September	4 486 618	-6,6	1 498 229	-40,4	2 705 724	-0,1	8 690 571	-13,3
	October	5 302 305	-2,2	1 903 123	-26,5	2 993 633	10,2	10 199 061	-4,9
	November	4 585 400	-5,0	3 903 092	14,0	2 785 284	13,3	11 273 776	5,2
	December	4 230 596	-10,7	2 535 273	66,5	1 982 402	1,4	8 748 271	6,5
	Total	53 432 107	-2,6	26 551 932	-10,7	29 263 347	7,0	109 247 386	-2,4
2018	January	3 423 823	8,3	1 326 388	-30,0	2 048 834	20,3	6 799 045	0,6
	February	4 729 622	4,2	3 008 508	32,1	2 525 209	16,8	10 263 339	14,3

1/ The percentage change is the change in the value of recorded building plans passed by municipalities of the relevant year/month compared with the value of recorded building plans passed by municipalities of the comparable period of the previous year expressed as a percentage.

2/ Preliminary figures.

Table 2 – Seasonally adjusted value and percentage change of recorded building plans passed by larger municipalities at current prices by type of building

Year and month		Residential buildings		Non-residential buildings 3/		Additions and alterations		Total	
		R'000	% change 1/	R'000	% change 1/	R'000	% change 1/	R'000	% change 1/
2017	January	4 336 475	-23,0	1 894 083	24,4	2 303 923	-4,4	8 534 481	-10,8
	February	4 480 691	3,3	2 277 683	20,3	2 220 520	-3,6	8 978 894	5,2
	March	3 910 822	-12,7	1 675 826	-26,4	2 236 097	0,7	7 822 745	-12,9
	April	4 140 380	5,9	1 002 693	-40,2	2 323 504	3,9	7 466 577	-4,6
	May	4 469 478	7,9	1 983 293	97,8	2 373 637	2,2	8 826 408	18,2
	June	4 346 503	-2,8	2 192 921	10,6	2 561 721	7,9	9 101 145	3,1
	July	5 776 480	32,9	2 811 554	28,2	2 419 828	-5,5	11 007 862	21,0
	August	3 742 093	-35,2	2 874 162	2,2	2 541 648	5,0	9 157 903	-16,8
	September	4 348 739	16,2	1 498 229	-47,9	2 463 406	-3,1	8 310 374	-9,3
	October	4 602 631	5,8	1 903 123	27,0	2 634 192	6,9	9 139 946	10,0
	November	4 293 523	-6,7	3 903 092	105,1	2 560 562	-2,8	10 757 177	17,7
	December	5 077 302	18,3	2 535 273	-35,0	2 513 111	-1,9	10 125 686	-5,9
2018	January	4 615 518	-9,1	1 326 388	-47,7	2 695 601	7,3	8 637 507	-14,7
	February	4 631 529	0,3	3 008 508	126,8	2 613 640	-3,0	10 253 677	18,7
	Sep. – Nov. 17	13 244 893		7 304 444		7 658 160		28 207 497	
	Dec. 17 – Feb. 18 2/	14 324 349	8,1	6 870 169	-5,9	7 822 352	2,1	29 016 870	2,9

1/ The percentage change is the change in the seasonally adjusted value of recorded building plans passed by municipalities of the relevant month compared with the seasonally adjusted value of recorded building plans passed by municipalities of the previous month expressed as a percentage.

2/ The percentage change is the change in the seasonally adjusted value of recorded building plans passed by municipalities for the latest three months compared with the seasonally adjusted value of recorded building plans passed by municipalities of the previous three months expressed as a percentage.

3/ Not seasonally adjusted because the presence of seasonality is not significant. See notes 10 and 11 on page 38.

Table 3 – Value and percentage change of recorded building plans passed by larger municipalities at constant 2015 prices by type of building

Year and month 2/		Residential buildings		Non-residential buildings		Additions and alterations		Total	
		R'000	% change 1/	R'000	% change 1/	R'000	% change 1/	R'000	% change 1/
2017	January	2 874 043	-1,3	1 721 894	-61,3	1 548 235	9,0	6 144 172	-30,0
	February	4 096 955	-7,0	2 055 671	-19,5	1 950 455	-4,3	8 103 081	-9,9
	March	3 814 122	-13,3	1 508 394	-40,4	2 050 169	4,3	7 372 685	-17,1
	April	3 286 236	-36,9	900 892	-66,5	1 782 443	-21,3	5 969 571	-41,3
	May	4 138 629	3,9	1 766 067	-17,1	2 175 364	2,6	8 080 060	-1,9
	June	4 268 093	-9,3	1 959 715	34,2	2 361 745	4,4	8 589 553	1,9
	July	5 051 866	43,8	2 510 316	94,4	2 344 971	-0,8	9 907 153	38,2
	August	3 685 150	-10,7	2 552 542	52,3	2 627 399	22,9	8 865 091	11,7
	September	3 956 453	-11,4	1 321 190	-43,5	2 386 000	-5,3	7 663 643	-17,8
	October	4 642 999	-7,7	1 666 482	-30,6	2 621 395	4,0	8 930 876	-10,2
	November	3 990 775	-10,1	3 396 947	7,8	2 424 094	7,2	9 811 816	-0,4
	December	3 678 779	-14,9	2 204 585	58,7	1 723 828	-3,3	7 607 192	1,5
	Total	47 484 100	-7,8	23 564 695	-16,0	25 996 098	1,3	97 044 893	-7,8
2018	January	2 974 651	3,5	1 152 379	-33,1	1 780 047	15,0	5 907 077	-3,9
	February	4 109 142	0,3	2 613 821	27,2	2 193 926	12,5	8 916 889	10,0

1/ The percentage change is the change in the value of recorded building plans passed by municipalities of the relevant year/month compared with the value of recorded building plans passed by municipalities of the comparable period of the previous year expressed as a percentage.

2/ Preliminary figures.

Table 4 – Seasonally adjusted value and percentage change of recorded building plans passed by larger municipalities at constant 2015 prices by type of building

Year and month		Residential buildings		Non-residential buildings 3/		Additions and alterations		Total	
		R'000	% change 1/	R'000	% change 1/	R'000	% change 1/	R'000	% change 1/
2017	January	3 937 324	-22,6	1 721 894	24,0	2 087 842	-5,3	7 747 060	-10,8
	February	4 044 907	2,7	2 055 671	19,4	2 002 756	-4,1	8 103 334	4,6
	March	3 529 233	-12,7	1 508 394	-26,6	2 003 738	0,0	7 041 365	-13,1
	April	3 728 012	5,6	900 892	-40,3	2 062 219	2,9	6 691 123	-5,0
	May	3 988 527	7,0	1 766 067	96,0	2 110 503	2,3	7 865 097	17,5
	June	3 892 429	-2,4	1 959 715	11,0	2 312 826	9,6	8 164 970	3,8
	July	5 179 998	33,1	2 510 316	28,1	2 166 751	-6,3	9 857 065	20,7
	August	3 326 543	-35,8	2 552 542	1,7	2 260 498	4,3	8 139 583	-17,4
	September	3 826 780	15,0	1 321 190	-48,2	2 167 437	-4,1	7 315 407	-10,1
	October	4 022 021	5,1	1 666 482	26,1	2 306 432	6,4	7 994 935	9,3
	November	3 729 554	-7,3	3 396 947	103,8	2 261 498	-1,9	9 387 999	17,4
	December	4 381 011	17,5	2 204 585	-35,1	2 195 833	-2,9	8 781 429	-6,5
2018	January	4 003 969	-8,6	1 152 379	-47,7	2 319 481	5,6	7 475 829	-14,9
	February	4 025 484	0,5	2 613 821	126,8	2 262 218	-2,5	8 901 523	19,1
	Sep. – Nov. 17	11 578 355		6 384 619		6 735 367		24 698 341	
	Dec. 17 – Feb. 18 2/	12 410 464	7,2	5 970 785	-6,5	6 777 532	0,6	25 158 781	1,9

1/ The percentage change is the change in the seasonally adjusted value of recorded building plans passed by municipalities of the relevant month compared with the seasonally adjusted value of recorded building plans passed by municipalities of the previous month expressed as a percentage.

2/ The percentage change is the change in the seasonally adjusted value of recorded building plans passed by municipalities for the latest three months compared with the seasonally adjusted value of recorded building plans passed by municipalities of the previous three months expressed as a percentage.

3/ Not seasonally adjusted because the presence of seasonality is not significant. See notes 10 and 11 on page 38.

Table 5 – Value and percentage change of buildings reported as completed to larger municipalities at current prices by type of building

Year and month 2/		Residential buildings		Non-residential buildings		Additions and alterations		Total	
		R'000	% change 1/	R'000	% change 1/	R'000	% change 1/	R'000	% change 1/
2017	January	2 359 273	6,8	1 324 149	128,9	755 314	16,0	4 438 736	29,1
	February	2 987 483	21,5	793 718	-22,9	839 781	-3,5	4 620 982	6,0
	March	3 590 701	42,3	2 469 283	36,4	1 096 654	24,9	7 156 638	37,3
	April	3 722 887	60,7	835 924	-60,4	688 546	-16,3	5 247 357	-0,1
	May	2 997 231	-8,5	1 458 694	-19,8	938 447	2,7	5 394 372	-10,2
	June	3 184 349	2,5	2 807 943	111,9	1 119 285	20,3	7 111 577	32,7
	July	2 791 841	19,3	1 418 931	23,3	878 502	24,5	5 089 274	21,3
	August	2 913 322	16,0	1 538 208	27,6	1 121 295	41,6	5 572 825	23,6
	September	3 017 108	-17,3	3 501 830	164,1	1 234 363	25,5	7 753 301	30,1
	October	3 332 642	9,2	2 668 765	187,5	831 585	-18,6	6 832 992	36,6
	November	3 663 759	21,0	3 257 545	93,7	1 141 897	9,7	8 063 201	40,2
	December	4 159 930	-7,9	863 246	-12,4	958 305	9,8	5 981 481	-6,2
	Total	38 720 526	10,7	22 938 236	43,8	11 603 974	10,7	73 262 736	19,3
2018	January	2 357 400	-0,1	807 034	-39,1	792 693	4,9	3 957 127	-10,9
	February	2 915 696	-2,4	1 521 419	91,7	1 052 408	25,3	5 489 523	18,8

1/ The percentage change is the change in the value of buildings reported as completed to municipalities of the relevant year/month compared with the value of buildings reported as completed to municipalities of the comparable period of the previous year expressed as a percentage.

2/ Preliminary figures.

Table 6 – Seasonally adjusted value and percentage change of buildings reported as completed to larger municipalities at current prices by type of building

Year and month		Residential buildings		Non-residential buildings 3/		Additions and alterations		Total	
		R'000	% change 1/	R'000	% change 1/	R'000	% change 1/	R'000	% change 1/
2017	January	3 102 501	-27,6	1 324 149	34,4	971 696	-2,8	5 398 346	-13,9
	February	3 282 952	5,8	793 718	-40,1	824 065	-15,2	4 900 735	-9,2
	March	3 532 494	7,6	2 469 283	211,1	823 652	-0,1	6 825 429	39,3
	April	3 751 959	6,2	835 924	-66,1	844 052	2,5	5 431 935	-20,4
	May	3 158 526	-15,8	1 458 694	74,5	943 967	11,8	5 561 187	2,4
	June	3 250 934	2,9	2 807 943	92,5	1 054 155	11,7	7 113 032	27,9
	July	2 833 444	-12,8	1 418 931	-49,5	923 237	-12,4	5 175 612	-27,2
	August	2 940 451	3,8	1 538 208	8,4	1 065 717	15,4	5 544 376	7,1
	September	2 770 597	-5,8	3 501 830	127,7	1 134 106	6,4	7 406 533	33,6
	October	3 106 123	12,1	2 668 765	-23,8	805 388	-29,0	6 580 276	-11,2
	November	3 060 394	-1,5	3 257 545	22,1	1 079 546	34,0	7 397 485	12,4
	December	3 931 745	28,5	863 246	-73,5	1 077 656	-0,2	5 872 647	-20,6
2018	January	3 103 096	-21,1	807 034	-6,5	1 023 014	-5,1	4 933 144	-16,0
	February	3 220 551	3,8	1 521 419	88,5	1 051 959	2,8	5 793 929	17,4
	Sep. – Nov. 17	8 937 114		9 428 140		3 019 040		21 384 294	
	Dec. 17 – Feb. 18 2/	10 255 392	14,8	3 191 699	-66,1	3 152 629	4,4	16 599 720	-22,4

1/ The percentage change is the change in the seasonally adjusted value of buildings reported as completed to municipalities of the relevant month compared with the seasonally adjusted value of buildings reported as completed to municipalities of the previous month expressed as a percentage.

2/ The percentage change is the change in the seasonally adjusted value of buildings reported as completed to municipalities for the latest three months compared with the seasonally adjusted value of buildings reported as completed to municipalities of the previous three months expressed as a percentage.

3/ Not seasonally adjusted because the presence of seasonality is not significant. See notes 10 and 11 on page 38.

Table 7 – Value and percentage change of buildings reported as completed to larger municipalities at constant 2015 prices by type of building

Year and month 2/		Residential buildings		Non-residential buildings		Additions and alterations		Total	
		R'000	% change 1/	R'000	% change 1/	R'000	% change 1/	R'000	% change 1/
2017	January	2 144 794	-0,7	1 203 772	112,7	686 649	7,7	4 035 215	19,9
	February	2 696 284	14,4	716 352	-27,5	757 925	-9,1	4 170 561	-0,2
	March	3 231 954	34,0	2 222 577	28,4	987 087	17,6	6 441 618	29,3
	April	3 344 912	52,2	751 055	-62,5	618 640	-20,7	4 714 607	-5,4
	May	2 668 950	-13,9	1 298 926	-24,5	835 661	-3,3	4 803 537	-15,5
	June	2 845 710	-2,1	2 509 332	102,2	1 000 255	14,9	6 355 297	26,6
	July	2 492 715	14,1	1 266 903	17,9	784 377	19,1	4 543 995	16,0
	August	2 587 320	10,4	1 366 082	21,4	995 821	34,8	4 949 223	17,7
	September	2 660 589	-21,6	3 088 034	150,3	1 088 504	18,9	6 837 127	23,4
	October	2 918 250	3,1	2 336 922	171,4	728 183	-23,2	5 983 355	29,0
	November	3 188 650	14,5	2 835 113	83,2	993 818	3,8	7 017 581	32,7
	December	3 617 330	-12,2	750 649	-16,5	833 309	4,6	5 201 288	-10,6
	Total	34 397 458	4,9	20 345 717	35,7	10 310 229	4,8	65 053 404	12,9
2018	January	2 048 132	-4,5	701 159	-41,8	688 699	0,3	3 437 990	-14,8
	February	2 533 185	-6,0	1 321 824	84,5	914 342	20,6	4 769 351	14,4

1/ The percentage change is the change in the value of buildings reported as completed to municipalities of the relevant year/month compared with the value of buildings reported as completed to municipalities of the comparable period of the previous year expressed as a percentage.

2/ Preliminary figures.

Table 8 – Seasonally adjusted value and percentage change of buildings reported as completed to larger municipalities at constant 2015 prices by type of building

Year and month		Residential buildings		Non-residential buildings 3/		Additions and alterations		Total	
		R'000	% change 1/	R'000	% change 1/	R'000	% change 1/	R'000	% change 1/
2017	January	2 817 436	-27,3	1 203 772	33,9	879 711	-3,2	4 900 919	-13,8
	February	2 960 365	5,1	716 352	-40,5	744 626	-15,4	4 421 343	-9,8
	March	3 187 539	7,7	2 222 577	210,3	744 308	0,0	6 154 424	39,2
	April	3 367 102	5,6	751 055	-66,2	759 125	2,0	4 877 282	-20,8
	May	2 848 775	-15,4	1 298 926	72,9	842 968	11,0	4 990 669	2,3
	June	2 919 254	2,5	2 509 332	93,2	946 123	12,2	6 374 709	27,7
	July	2 527 165	-13,4	1 266 903	-49,5	825 568	-12,7	4 619 636	-27,5
	August	2 611 309	3,3	1 366 082	7,8	947 258	14,7	4 924 649	6,6
	September	2 451 692	-6,1	3 088 034	126,1	999 162	5,5	6 538 888	32,8
	October	2 716 507	10,8	2 336 922	-24,3	700 764	-29,9	5 754 193	-12,0
	November	2 643 803	-2,7	2 835 113	21,3	937 557	33,8	6 416 473	11,5
	December	3 391 212	28,3	750 649	-73,5	933 842	-0,4	5 075 703	-20,9
2018	January	2 691 284	-20,6	701 159	-6,6	885 359	-5,2	4 277 802	-15,7
	February	2 795 235	3,9	1 321 824	88,5	915 262	3,4	5 032 321	17,6
	Sep. – Nov. 17	7 812 002		8 260 069		2 637 483		18 709 554	
	Dec. 17 – Feb. 18 2/	8 877 731	13,6	2 773 632	-66,4	2 734 463	3,7	14 385 826	-23,1

1/ The percentage change is the change in the seasonally adjusted value of buildings reported as completed to municipalities of the relevant month compared with the seasonally adjusted value of buildings reported as completed to municipalities of the previous month expressed as a percentage.

2/ The percentage change is the change in the seasonally adjusted value of buildings reported as completed to municipalities for the latest three months compared with the seasonally adjusted value of buildings reported as completed to municipalities of the previous three months expressed as a percentage.

3/ Not seasonally adjusted because the presence of seasonality is not significant. See notes 10 and 11 on page 38.

Table 9 – Recorded building plans passed by larger municipalities at current prices by type of building: South Africa

			Feb. 2017	Jan. 2018	Feb. 2018	Jan. - Feb. 2017	Jan. - Feb. 2018	% change 1/
Category of building	Type of building	Measuring unit						
Residential buildings	Dwelling-houses < 80 square metres	Number	1 528	1 557	1 882	2 250	3 439	52,8
		square metres	73 025	68 800	89 227	108 987	158 027	45,0
		R'000	396 180	268 926	513 497	610 162	782 423	28,2
	Dwelling-houses >= 80 square metres	Number	1 178	967	1 203	2 054	2 170	5,6
		square metres	311 327	269 645	318 113	553 082	587 758	6,3
		R'000	2 109 639	1 936 072	2 268 413	3 755 176	4 204 485	12,0
	Flats and townhouses	Number	2 036	2 008	3 329	3 618	5 337	47,5
		square metres	246 475	159 583	282 646	421 011	442 229	5,0
		R'000	2 004 003	1 187 871	1 927 278	3 292 605	3 115 149	-5,4
	Other residential buildings 2/	square metres	4 319	4 998	3 791	6 960	8 789	26,3
		R'000	29 604	30 954	20 434	42 930	51 388	19,7
	Total residential buildings	R'000	4 539 426	3 423 823	4 729 622	7 700 873	8 153 445	5,9
Non-residential buildings	Office and banking space	square metres	73 465	32 793	117 011	98 631	149 804	51,9
		R'000	642 912	324 688	1 196 218	883 915	1 520 906	72,1
	Shopping space	square metres	76 797	41 386	74 539	94 078	115 925	23,2
		R'000	705 441	289 329	569 300	826 045	858 629	3,9
	Industrial and warehouse space	square metres	109 743	92 431	122 223	314 574	214 654	-31,8
		R'000	632 708	550 441	767 773	1 828 456	1 318 214	-27,9
	Other non-residential buildings 3/	square metres	44 871	20 286	61 115	91 336	81 401	-10,9
		R'000	296 622	161 930	475 217	633 350	637 147	0,6
	Total non-residential buildings	R'000	2 277 683	1 326 388	3 008 508	4 171 766	4 334 896	3,9
	Additions and alterations	Dwelling-houses	square metres	224 079	177 853	228 987	406 907	406 840
R'000			1 520 556	1 268 567	1 627 618	2 757 546	2 896 185	5,0
Other buildings 4/		square metres	63 998	88 456	97 666	120 142	186 122	54,9
		R'000	640 548	780 267	897 591	1 106 616	1 677 858	51,6
Total additions and alterations	R'000	2 161 104	2 048 834	2 525 209	3 864 162	4 574 043	18,4	
Recorded plans passed	Total at current prices	R'000	8 978 213	6 799 045	10 263 339	15 736 801	17 062 384	8,4

1/ The percentage change between cumulative figures for 2017 and 2018.

2/ Other residential buildings include institutions for the disabled, boarding houses, hostels and tourism accommodation e.g. hotels, motels, guest-houses, holiday chalets, bed-and-breakfast accommodation and casinos.

3/ Other non-residential space includes churches, sport and recreation clubs, schools, crèches, hospitals and all other non-residential space.

4/ Other buildings include other residential buildings, non-residential buildings and internal alterations. No square metres are collected for internal alterations.

Table 10 – Recorded building plans passed by larger municipalities at current prices by type of building: Western Cape

			Feb. 2017	Jan. 2018	Feb. 2018	Jan. - Feb. 2017	Jan. - Feb. 2018	% change 1/
Category of building	Type of building	Measuring unit						
Residential buildings	Dwelling-houses < 80 square metres	Number	780	77	857	1 174	934	-20,4
		square metres	35 498	3 979	40 343	53 815	44 322	-17,6
		R'000	210 311	27 899	228 211	327 027	256 110	-21,7
	Dwelling-houses >= 80 square metres	Number	395	318	469	642	787	22,6
		square metres	89 387	78 174	107 493	151 490	185 667	22,6
		R'000	577 834	520 254	729 627	991 885	1 249 881	26,0
	Flats and townhouses	Number	998	523	2 054	1 309	2 577	96,9
		square metres	118 802	53 307	166 671	150 021	219 978	46,6
		R'000	871 192	426 226	1 016 110	1 114 119	1 442 336	29,5
	Other residential buildings 2/	square metres	2 052	977	600	3 374	1 577	-53,3
		R'000	14 671	6 647	3 599	21 281	10 246	-51,9
	Total residential buildings	R'000	1 674 008	981 026	1 977 547	2 454 312	2 958 573	20,5
	Non-residential buildings	Office and banking space	square metres	50 017	5 847	11 652	51 234	17 499
R'000			437 739	46 020	85 009	446 282	131 029	-70,6
Shopping space		square metres	8 720	5 210	38 572	9 237	43 782	374,0
		R'000	68 057	43 627	311 293	70 642	354 920	402,4
Industrial and warehouse space		square metres	26 857	19 188	35 578	41 377	54 766	32,4
		R'000	176 496	112 496	259 619	276 781	372 115	34,4
Other non-residential buildings 3/		square metres	2 498	4 130	34 020	7 388	38 150	416,4
		R'000	16 273	29 478	256 497	44 338	285 975	545,0
Total non-residential buildings		R'000	698 565	231 621	912 418	838 043	1 144 039	36,5
Additions and alterations		Dwelling-houses	square metres	61 550	56 482	69 134	110 511	125 616
	R'000		398 289	378 052	458 296	719 659	836 348	16,2
	Other buildings 4/	square metres	17 889	13 115	22 926	29 748	36 041	21,2
		R'000	185 445	126 847	232 282	310 720	359 129	15,6
Total additions and alterations	R'000	583 734	504 899	690 578	1 030 379	1 195 477	16,0	
Recorded plans passed	Total at current prices	R'000	2 956 307	1 717 546	3 580 543	4 322 734	5 298 089	22,6

1/ The percentage change between cumulative figures for 2017 and 2018.

2/ Other residential buildings include institutions for the disabled, boarding houses, hostels and tourism accommodation e.g. hotels, motels, guest-houses, holiday chalets, bed-and-breakfast accommodation and casinos.

3/ Other non-residential space includes churches, sport and recreation clubs, schools, crèches, hospitals and all other non-residential space.

4/ Other buildings include other residential buildings, non-residential buildings and internal alterations. No square metres are collected for internal alterations.

Table 11 – Recorded building plans passed by larger municipalities at current prices by type of building: Eastern Cape

			Feb. 2017	Jan. 2018	Feb. 2018	Jan. - Feb. 2017	Jan. - Feb. 2018	% change 1/
Category of building	Type of building	Measuring unit						
Residential buildings	Dwelling-houses < 80 square metres	Number	335	122	341	340	463	36,2
		square metres	14 829	5 226	15 092	15 090	20 318	34,6
		R'000	66 513	20 403	102 219	68 112	122 622	80,0
	Dwelling-houses >= 80 square metres	Number	80	57	98	123	155	26,0
		square metres	18 972	12 931	22 752	28 912	35 683	23,4
		R'000	112 189	82 657	145 314	170 669	227 971	33,6
	Flats and townhouses	Number	58	906	37	80	943	1 078,8
		square metres	4 461	47 771	3 737	6 295	51 508	718,2
		R'000	22 803	294 283	24 756	31 228	319 039	921,6
	Other residential buildings 2/	square metres	132	0	224	132	224	69,7
		R'000	528	0	1 511	528	1 511	186,2
	Total residential buildings	R'000	202 033	397 343	273 800	270 537	671 143	148,1
Non-residential buildings	Office and banking space	square metres	153	1 033	1 312	153	2 345	1 432,7
		R'000	810	6 557	8 329	810	14 886	1 737,8
	Shopping space	square metres	242	1 135	120	541	1 255	132,0
		R'000	1 176	7 205	571	2 372	7 776	227,8
	Industrial and warehouse space	square metres	27 187	464	787	32 161	1 251	-96,1
		R'000	149 529	2 945	4 996	176 886	7 941	-95,5
	Other non-residential buildings 3/	square metres	827	642	3 791	1 866	4 433	137,6
		R'000	4 962	4 077	23 408	10 159	27 485	170,5
	Total non-residential buildings	R'000	156 477	20 784	37 304	190 227	58 088	-69,5
	Additions and alterations	Dwelling-houses	square metres	28 706	13 180	21 758	42 973	34 938
R'000			172 931	85 006	135 570	250 467	220 576	-11,9
Other buildings 4/		square metres	2 283	7 248	27 657	4 188	34 905	733,5
		R'000	16 023	45 258	175 213	32 369	220 471	581,1
Total additions and alterations	R'000	188 954	130 264	310 783	282 836	441 047	55,9	
Recorded plans passed	Total at current prices	R'000	547 464	548 391	621 887	743 600	1 170 278	57,4

1/ The percentage change between cumulative figures for 2017 and 2018.

2/ Other residential buildings include institutions for the disabled, boarding houses, hostels and tourism accommodation e.g. hotels, motels, guest-houses, holiday chalets, bed-and-breakfast accommodation and casinos.

3/ Other non-residential space includes churches, sport and recreation clubs, schools, crèches, hospitals and all other non-residential space.

4/ Other buildings include other residential buildings, non-residential buildings and internal alterations. No square metres are collected for internal alterations.

Table 12 – Recorded building plans passed by larger municipalities at current prices by type of building: Northern Cape

			Feb. 2017	Jan. 2018	Feb. 2018	Jan. - Feb. 2017	Jan. - Feb. 2018	% change 1/
Category of building	Type of building	Measuring unit						
Residential buildings	Dwelling-houses < 80 square metres	Number	5	1	1	5	2	-60,0
		square metres	253	50	53	253	103	-59,3
		R'000	1 438	402	426	1 438	828	-42,4
	Dwelling-houses >= 80 square metres	Number	11	8	40	33	48	45,5
		square metres	2 238	1 723	6 314	4 633	8 037	73,5
		R'000	14 291	11 243	41 453	30 633	52 696	72,0
	Flats and townhouses	Number	0	0	0	0	0	..
		square metres	0	0	0	0	0	..
		R'000	0	0	0	0	0	..
	Other residential buildings 2/	square metres	0	294	0	390	294	-24,6
		R'000	0	2 058	0	2 535	2 058	-18,8
	Total residential buildings	R'000	15 729	13 703	41 879	34 606	55 582	60,6
Non-residential buildings	Office and banking space	square metres	0	7 269	0	0	7 269	..
		R'000	0	58 450	0	0	58 450	..
	Shopping space	square metres	0	0	0	0	0	..
		R'000	0	0	0	0	0	..
	Industrial and warehouse space	square metres	2 205	2 502	311	2 205	2 813	27,6
		R'000	14 333	13 287	2 177	14 333	15 464	7,9
	Other non-residential buildings 3/	square metres	311	64	0	658	64	-90,3
		R'000	2 022	515	0	4 278	515	-88,0
	Total non-residential buildings	R'000	16 355	72 252	2 177	18 611	74 429	299,9
	Additions and alterations	Dwelling-houses	square metres	1 418	1 161	2 464	3 917	3 625
R'000			9 689	8 101	16 717	26 838	24 818	-7,5
Other buildings 4/		square metres	381	7 079	3 819	381	10 898	2 760,4
		R'000	2 817	56 832	30 819	2 937	87 651	2 884,4
Total additions and alterations	R'000	12 506	64 933	47 536	29 775	112 469	277,7	
Recorded plans passed	Total at current prices	R'000	44 590	150 888	91 592	82 992	242 480	192,2

1/ The percentage change between cumulative figures for 2017 and 2018.

2/ Other residential buildings include institutions for the disabled, boarding houses, hostels and tourism accommodation e.g. hotels, motels, guest-houses, holiday chalets, bed-and-breakfast accommodation and casinos.

3/ Other non-residential space includes churches, sport and recreation clubs, schools, crèches, hospitals and all other non-residential space.

4/ Other buildings include other residential buildings, non-residential buildings and internal alterations. No square metres are collected for internal alterations.

Table 13 – Recorded building plans passed by larger municipalities at current prices by type of building: Free State

			Feb. 2017	Jan. 2018	Feb. 2018	Jan. - Feb. 2017	Jan. - Feb. 2018	% change 1/
Category of building	Type of building	Measuring unit						
Residential buildings	Dwelling-houses < 80 square metres	Number	25	25	3	36	28	-22,2
		square metres	1 270	1 311	183	1 947	1 494	-23,3
		R'000	7 477	6 087	1 212	11 164	7 299	-34,6
	Dwelling-houses >= 80 square metres	Number	57	62	58	117	120	2,6
		square metres	10 957	14 943	12 751	22 754	27 694	21,7
		R'000	61 041	93 110	79 271	123 856	172 381	39,2
	Flats and townhouses	Number	78	118	22	114	140	22,8
		square metres	10 757	5 926	675	18 484	6 601	-64,3
		R'000	75 299	42 438	4 999	126 605	47 437	-62,5
	Other residential buildings 2/	square metres	0	152	1 604	0	1 756	..
		R'000	0	724	7 777	0	8 501	..
Total residential buildings	R'000	143 817	142 359	93 259	261 625	235 618	-9,9	
Non-residential buildings	Office and banking space	square metres	0	0	0	187	0	..
		R'000	0	0	0	1 496	0	..
	Shopping space	square metres	693	6 681	5 158	3 231	11 839	266,4
		R'000	3 773	40 086	38 200	15 788	78 286	395,9
	Industrial and warehouse space	square metres	10 752	0	1 440	16 028	1 440	-91,0
		R'000	51 584	0	9 058	76 595	9 058	-88,2
	Other non-residential buildings 3/	square metres	547	401	557	547	958	75,1
		R'000	2 462	2 511	3 418	2 462	5 929	140,8
	Total non-residential buildings	R'000	57 819	42 597	50 676	96 341	93 273	-3,2
	Additions and alterations	Dwelling-houses	square metres	13 501	10 385	10 703	22 602	21 088
R'000			73 361	68 961	71 088	120 113	140 049	16,6
Other buildings 4/		square metres	1 372	35 680	0	2 033	35 680	1 655,0
		R'000	66 904	294 731	1 457	72 301	296 188	309,7
Total additions and alterations	R'000	140 265	363 692	72 545	192 414	436 237	126,7	
Recorded plans passed	Total at current prices	R'000	341 901	548 648	216 480	550 380	765 128	39,0

1/ The percentage change between cumulative figures for 2017 and 2018.

2/ Other residential buildings include institutions for the disabled, boarding houses, hostels and tourism accommodation e.g. hotels, motels, guest-houses, holiday chalets, bed-and-breakfast accommodation and casinos.

3/ Other non-residential space includes churches, sport and recreation clubs, schools, crèches, hospitals and all other non-residential space.

4/ Other buildings include other residential buildings, non-residential buildings and internal alterations. No square metres are collected for internal alterations.

Table 14 – Recorded building plans passed by larger municipalities at current prices by type of building: KwaZulu-Natal

			Feb. 2017	Jan. 2018	Feb. 2018	Jan. - Feb. 2017	Jan. - Feb. 2018	% change 1/
Category of building	Type of building	Measuring unit						
Residential buildings	Dwelling-houses < 80 square metres	Number	13	7	17	38	24	-36,8
		square metres	789	416	998	2 295	1 414	-38,4
		R'000	6 098	3 163	7 136	15 684	10 299	-34,3
	Dwelling-houses >= 80 square metres	Number	129	68	84	215	152	-29,3
		square metres	36 534	21 329	27 981	62 698	49 310	-21,4
		R'000	319 782	206 189	270 298	575 594	476 487	-17,2
	Flats and townhouses	Number	382	185	168	446	353	-20,9
		square metres	58 056	20 557	22 196	66 212	42 753	-35,4
		R'000	610 676	201 874	234 657	678 447	436 531	-35,7
	Other residential buildings 2/	square metres	2 135	0	0	2 135	0	..
		R'000	14 405	0	0	14 405	0	..
	Total residential buildings	R'000	950 961	411 226	512 091	1 284 130	923 317	-28,1
Non-residential buildings	Office and banking space	square metres	602	271	90 955	7 668	91 226	1 089,7
		R'000	3 010	1 897	968 262	55 129	970 159	1 659,8
	Shopping space	square metres	52 135	940	1 568	52 135	2 508	-95,2
		R'000	526 529	8 513	16 851	526 529	25 364	-95,2
	Industrial and warehouse space	square metres	13 802	33 146	48 345	31 967	81 491	154,9
		R'000	84 946	189 490	294 254	200 714	483 744	141,0
	Other non-residential buildings 3/	square metres	10 209	0	806	11 122	806	-92,8
		R'000	61 002	0	7 386	67 393	7 386	-89,0
	Total non-residential buildings	R'000	675 487	199 900	1 286 753	849 765	1 486 653	74,9
	Additions and alterations	Dwelling-houses	square metres	28 474	17 421	26 464	54 725	43 885
R'000			271 338	166 148	268 568	514 410	434 716	-15,5
Other buildings 4/		square metres	16 565	7 295	27 096	34 925	34 391	-1,5
		R'000	207 058	105 814	314 708	362 445	420 522	16,0
Total additions and alterations	R'000	478 396	271 962	583 276	876 855	855 238	-2,5	
Recorded plans passed	Total at current prices	R'000	2 104 844	883 088	2 382 120	3 010 750	3 265 208	8,5

1/ The percentage change between cumulative figures for 2017 and 2018.

2/ Other residential buildings include institutions for the disabled, boarding houses, hostels and tourism accommodation e.g. hotels, motels, guest-houses, holiday chalets, bed-and-breakfast accommodation and casinos.

3/ Other non-residential space includes churches, sport and recreation clubs, schools, crèches, hospitals and all other non-residential space.

4/ Other buildings include other residential buildings, non-residential buildings and internal alterations. No square metres are collected for internal alterations.

Table 15 – Recorded building plans passed by larger municipalities at current prices by type of building: North West

			Feb. 2017	Jan. 2018	Feb. 2018	Jan. - Feb. 2017	Jan. - Feb. 2018	% change 1/
Category of building	Type of building	Measuring unit						
Residential buildings	Dwelling-houses < 80 square metres	Number	11	3	5	16	8	-50,0
		square metres	685	190	290	981	480	-51,1
		R'000	3 083	1 016	1 578	4 380	2 594	-40,8
	Dwelling-houses >= 80 square metres	Number	69	56	40	129	96	-25,6
		square metres	19 575	13 258	12 461	35 226	25 719	-27,0
		R'000	101 246	71 802	68 560	188 527	140 362	-25,5
	Flats and townhouses	Number	66	93	429	804	522	-35,1
		square metres	7 088	5 488	36 595	81 748	42 083	-48,5
		R'000	47 856	31 438	182 975	494 256	214 413	-56,6
	Other residential buildings 2/	square metres	0	0	0	0	0	..
		R'000	0	0	0	0	0	..
Total residential buildings	R'000	152 185	104 256	253 113	687 163	357 369	-48,0	
Non-residential buildings	Office and banking space	square metres	729	0	2 095	729	2 095	187,4
		R'000	4 887	0	10 421	4 887	10 421	113,2
	Shopping space	square metres	2 211	0	11 906	2 944	11 906	304,4
		R'000	12 773	0	67 800	16 072	67 800	321,9
	Industrial and warehouse space	square metres	178	0	8 478	2 696	8 478	214,5
		R'000	890	0	42 395	11 095	42 395	282,1
	Other non-residential buildings 3/	square metres	0	0	1 956	283	1 956	591,2
		R'000	0	0	9 777	1 274	9 777	667,4
	Total non-residential buildings	R'000	18 550	0	130 393	33 328	130 393	291,2
	Additions and alterations	Dwelling-houses	square metres	8 511	8 142	10 313	16 629	18 455
R'000			41 846	43 201	54 865	81 010	98 066	21,1
Other buildings 4/		square metres	3 282	122	644	3 323	766	-76,9
		R'000	20 941	649	3 402	21 786	4 051	-81,4
Total additions and alterations	R'000	62 787	43 850	58 267	102 796	102 117	-0,7	
Recorded plans passed	Total at current prices	R'000	233 522	148 106	441 773	823 287	589 879	-28,4

1/ The percentage change between cumulative figures for 2017 and 2018.

2/ Other residential buildings include institutions for the disabled, boarding houses, hostels and tourism accommodation e.g. hotels, motels, guest-houses, holiday chalets, bed-and-breakfast accommodation and casinos.

3/ Other non-residential space includes churches, sport and recreation clubs, schools, crèches, hospitals and all other non-residential space.

4/ Other buildings include other residential buildings, non-residential buildings and internal alterations. No square metres are collected for internal alterations.

Table 16 – Recorded building plans passed by larger municipalities at current prices by type of building: Gauteng

			Feb. 2017	Jan. 2018	Feb. 2018	Jan. - Feb. 2017	Jan. - Feb. 2018	% change 1/	
Category of building	Type of building	Measuring unit							
Residential buildings	Dwelling-houses < 80 square metres	Number	298	1 305	646	495	1 951	294,1	
		square metres	16 381	56 603	31 641	26 810	88 244	229,1	
		R'000	86 290	204 957	169 670	148 134	374 627	152,9	
	Dwelling-houses >= 80 square metres	Number	330	309	260	568	569	0,2	
		square metres	107 549	98 274	90 796	188 415	189 070	0,3	
		R'000	779 060	778 171	718 651	1 369 384	1 496 822	9,3	
	Flats and townhouses	Number	402	164	560	785	724	-7,8	
		square metres	41 419	24 864	49 288	89 289	74 152	-17,0	
		R'000	347 211	183 655	442 714	803 999	626 369	-22,1	
	Other residential buildings 2/	square metres	0	0	806	0	806	..	
		R'000	0	0	4 895	0	4 895	..	
	Total residential buildings		R'000	1 212 561	1 166 783	1 335 930	2 321 517	2 502 713	7,8
Non-residential buildings	Office and banking space	square metres	17 733	17 958	10 511	33 439	28 469	-14,9	
		R'000	176 635	209 997	121 883	350 956	331 880	-5,4	
	Shopping space	square metres	11 419	18 777	15 336	20 195	34 113	68,9	
		R'000	86 288	148 825	125 387	167 361	274 212	63,8	
	Industrial and warehouse space	square metres	26 850	27 999	15 318	182 576	43 317	-76,3	
		R'000	146 135	189 945	92 960	1 046 550	282 905	-73,0	
	Other non-residential buildings 3/	square metres	12 592	14 744	19 037	47 844	33 781	-29,4	
		R'000	101 430	123 895	169 123	376 521	293 018	-22,2	
	Total non-residential buildings		R'000	510 488	672 662	509 353	1 941 388	1 182 015	-39,1
	Additions and alterations	Dwelling-houses	square metres	65 026	57 199	70 721	125 352	127 920	2,0
R'000			473 630	444 647	523 224	903 536	967 871	7,1	
Other buildings 4/		square metres	21 257	16 714	10 526	43 060	27 240	-36,7	
		R'000	130 869	128 407	85 967	281 851	214 374	-23,9	
Total additions and alterations		R'000	604 499	573 054	609 191	1 185 387	1 182 245	-0,3	
Recorded plans passed	Total at current prices		R'000	2 327 548	2 412 499	2 454 474	5 448 292	4 866 973	-10,7

1/ The percentage change between cumulative figures for 2017 and 2018.

2/ Other residential buildings include institutions for the disabled, boarding houses, hostels and tourism accommodation e.g. hotels, motels, guest-houses, holiday chalets, bed-and-breakfast accommodation and casinos.

3/ Other non-residential space includes churches, sport and recreation clubs, schools, crèches, hospitals and all other non-residential space.

4/ Other buildings include other residential buildings, non-residential buildings and internal alterations. No square metres are collected for internal alterations.

Table 17 – Recorded building plans passed by larger municipalities at current prices by type of building: Mpumalanga

			Feb. 2017	Jan. 2018	Feb. 2018	Jan. - Feb. 2017	Jan. - Feb. 2018	% change 1/
Category of building	Type of building	Measuring unit						
Residential buildings	Dwelling-houses < 80 square metres	Number	46	12	10	126	22	-82,5
		square metres	2 362	713	517	6 501	1 230	-81,1
		R'000	10 164	3 241	2 463	27 732	5 704	-79,4
	Dwelling-houses >= 80 square metres	Number	64	58	103	122	161	32,0
		square metres	16 591	18 065	22 297	32 747	40 362	23,3
		R'000	97 355	114 381	134 518	170 103	248 899	46,3
	Flats and townhouses	Number	27	19	51	38	70	84,2
		square metres	2 258	1 670	2 169	3 511	3 839	9,3
		R'000	10 189	7 957	14 111	15 934	22 068	38,5
	Other residential buildings 2/	square metres	0	3 266	557	929	3 823	311,5
		R'000	0	20 211	2 652	4 181	22 863	446,8
Total residential buildings	R'000	117 708	145 790	153 744	217 950	299 534	37,4	
Non-residential buildings	Office and banking space	square metres	1 710	0	486	1 710	486	-71,6
		R'000	7 799	0	2 314	7 799	2 314	-70,3
	Shopping space	square metres	451	8 403	828	4 681	9 231	97,2
		R'000	2 030	40 052	3 943	21 488	43 995	104,7
	Industrial and warehouse space	square metres	1 912	6 749	3 064	3 411	9 813	187,7
		R'000	8 795	32 132	15 303	15 690	47 435	202,3
	Other non-residential buildings 3/	square metres	6 862	0	948	7 364	948	-87,1
		R'000	31 296	0	5 608	33 555	5 608	-83,3
	Total non-residential buildings	R'000	49 920	72 184	27 168	78 532	99 352	26,5
	Additions and alterations	Dwelling-houses	square metres	11 991	10 544	14 451	19 607	24 995
R'000			54 896	57 229	83 889	88 933	141 118	58,7
Other buildings 4/		square metres	321	1 025	1 874	1 836	2 899	57,9
		R'000	4 490	18 310	35 576	12 706	53 886	324,1
Total additions and alterations	R'000	59 386	75 539	119 465	101 639	195 004	91,9	
Recorded plans passed	Total at current prices	R'000	227 014	293 513	300 377	398 121	593 890	49,2

1/ The percentage change between cumulative figures for 2017 and 2018.

2/ Other residential buildings include institutions for the disabled, boarding houses, hostels and tourism accommodation e.g. hotels, motels, guest-houses, holiday chalets, bed-and-breakfast accommodation and casinos.

3/ Other non-residential space includes churches, sport and recreation clubs, schools, crèches, hospitals and all other non-residential space.

4/ Other buildings include other residential buildings, non-residential buildings and internal alterations. No square metres are collected for internal alterations.

Table 18 – Recorded building plans passed by larger municipalities at current prices by type of building: Limpopo

			Feb. 2017	Jan. 2018	Feb. 2018	Jan. - Feb. 2017	Jan. - Feb. 2018	% change 1/
Category of building	Type of building	Measuring unit						
Residential buildings	Dwelling-houses < 80 square metres	Number	15	5	2	20	7	-65,0
		square metres	958	312	110	1 295	422	-67,4
		R'000	4 806	1 758	582	6 491	2 340	-64,0
	Dwelling-houses >= 80 square metres	Number	43	31	51	105	82	-21,9
		square metres	9 524	10 948	15 268	26 207	26 216	0,0
		R'000	46 841	58 265	80 721	134 525	138 986	3,3
	Flats and townhouses	Number	25	0	8	42	8	-81,0
		square metres	3 634	0	1 315	5 451	1 315	-75,9
		R'000	18 777	0	6 956	28 017	6 956	-75,2
	Other residential buildings 2/	square metres	0	309	0	0	309	..
		R'000	0	1 314	0	0	1 314	..
	Total residential buildings	R'000	70 424	61 337	88 259	169 033	149 596	-11,5
Non-residential buildings	Office and banking space	square metres	2 521	415	0	3 511	415	-88,2
		R'000	12 032	1 767	0	16 556	1 767	-89,3
	Shopping space	square metres	926	240	1 051	1 114	1 291	15,9
		R'000	4 815	1 021	5 255	5 793	6 276	8,3
	Industrial and warehouse space	square metres	0	2 383	8 902	2 153	11 285	424,2
		R'000	0	10 146	47 011	9 812	57 157	482,5
	Other non-residential buildings 3/	square metres	11 025	305	0	14 264	305	-97,9
		R'000	77 175	1 454	0	93 370	1 454	-98,4
	Total non-residential buildings	R'000	94 022	14 388	52 266	125 531	66 654	-46,9
	Additions and alterations	Dwelling-houses	square metres	4 902	3 339	2 979	10 591	6 318
R'000			24 576	17 222	15 401	52 580	32 623	-38,0
Other buildings 4/		square metres	648	178	3 124	648	3 302	409,6
		R'000	6 001	3 419	18 167	9 501	21 586	127,2
Total additions and alterations	R'000	30 577	20 641	33 568	62 081	54 209	-12,7	
Recorded plans passed	Total at current prices	R'000	195 023	96 366	174 093	356 645	270 459	-24,2

1/ The percentage change between cumulative figures for 2017 and 2018.

2/ Other residential buildings include institutions for the disabled, boarding houses, hostels and tourism accommodation e.g. hotels, motels, guest-houses, holiday chalets, bed-and-breakfast accommodation and casinos.

3/ Other non-residential space includes churches, sport and recreation clubs, schools, crèches, hospitals and all other non-residential space.

4/ Other buildings include other residential buildings, non-residential buildings and internal alterations. No square metres are collected for internal alterations.

Table 19 – Buildings reported as completed to larger municipalities at current prices by type of building: South Africa

			Feb. 2017	Jan. 2018	Feb. 2018	Jan. - Feb. 2017	Jan. - Feb. 2018	% change 1/
Category of building	Type of building	Measuring unit						
Residential buildings	Dwelling-houses < 80 square metres	Number	1 347	238	1 178	1 883	1 416	-24,8
		square metres	62 157	12 169	54 577	89 330	66 746	-25,3
		R'000	294 610	66 385	296 347	429 080	362 732	-15,5
	Dwelling-houses >= 80 square metres	Number	727	603	819	1 324	1 422	7,4
		square metres	195 421	162 402	203 254	385 346	365 656	-5,1
		R'000	1 358 853	1 270 290	1 461 872	2 786 310	2 732 162	-1,9
	Flats and townhouses	Number	1 468	1 593	1 153	2 306	2 746	19,1
		square metres	150 996	122 683	146 919	225 103	269 602	19,8
		R'000	1 106 802	1 002 226	1 136 259	1 761 257	2 138 485	21,4
	Other residential buildings 2/	square metres	32 142	2 439	2 964	45 847	5 403	-88,2
		R'000	227 218	18 499	21 218	370 109	39 717	-89,3
Total residential buildings	R'000	2 987 483	2 357 400	2 915 696	5 346 756	5 273 096	-1,4	
Non-residential buildings	Office and banking space	square metres	15 745	21 619	78 047	93 196	99 666	6,9
		R'000	120 478	236 206	719 701	947 571	955 907	0,9
	Shopping space	square metres	12 866	11 048	11 703	22 970	22 751	-1,0
		R'000	88 272	92 194	91 071	150 189	183 265	22,0
	Industrial and warehouse space	square metres	74 773	64 434	112 003	148 399	176 437	18,9
		R'000	445 352	404 626	565 232	836 823	969 858	15,9
	Other non-residential buildings 3/	square metres	20 529	9 817	19 490	27 457	29 307	6,7
		R'000	139 616	74 008	145 415	183 284	219 423	19,7
	Total non-residential buildings	R'000	793 718	807 034	1 521 419	2 117 867	2 328 453	9,9
	Additions and alterations	Dwelling-houses	square metres	95 455	76 759	117 841	166 940	194 600
R'000			590 478	541 675	809 119	1 039 792	1 350 794	29,9
Other buildings 4/		square metres	21 635	24 569	28 942	52 959	53 511	1,0
		R'000	249 303	251 018	243 289	555 303	494 307	-11,0
Total additions and alterations	R'000	839 781	792 693	1 052 408	1 595 095	1 845 101	15,7	
Recorded buildings completed	Total at current prices	R'000	4 620 982	3 957 127	5 489 523	9 059 718	9 446 650	4,3

1/ The percentage change between cumulative figures for 2017 and 2018.

2/ Other residential buildings include institutions for the disabled, boarding houses, hostels and tourism accommodation e.g. hotels, motels, guest-houses, holiday chalets, bed-and-breakfast accommodation and casinos.

3/ Other non-residential space includes churches, sport and recreation clubs, schools, crèches, hospitals and all other non-residential space.

4/ Other buildings include other residential buildings, non-residential buildings and internal alterations. No square metres are collected for internal alterations.

Table 20 – Buildings reported as completed to larger municipalities at current prices by type of building: Western Cape

			Feb. 2017	Jan. 2018	Feb. 2018	Jan. - Feb. 2017	Jan. - Feb. 2018	% change 1/	
Category of building	Type of building	Measuring unit							
Residential buildings	Dwelling-houses < 80 square metres	Number	776	98	482	1 082	580	-46,4	
		square metres	33 956	4 570	21 512	48 707	26 082	-46,5	
		R'000	170 181	25 440	123 785	246 982	149 225	-39,6	
	Dwelling-houses >= 80 square metres	Number	259	181	256	382	437	14,4	
		square metres	58 739	48 726	56 666	89 675	105 392	17,5	
		R'000	374 674	319 596	376 767	572 862	696 363	21,6	
	Flats and townhouses	Number	620	907	610	681	1 517	122,8	
		square metres	62 433	43 518	53 406	70 944	96 924	36,6	
		R'000	476 275	351 165	412 402	534 684	763 567	42,8	
	Other residential buildings 2/	square metres	16 522	0	1 445	16 900	1 445	-91,4	
		R'000	132 820	0	10 948	134 522	10 948	-91,9	
	Total residential buildings		R'000	1 153 950	696 201	923 902	1 489 050	1 620 103	8,8
Non-residential buildings	Office and banking space	square metres	1 754	528	121	9 199	649	-92,9	
		R'000	11 717	4 620	1 077	65 159	5 697	-91,3	
	Shopping space	square metres	3 079	6 830	0	4 745	6 830	43,9	
		R'000	21 510	52 877	0	31 148	52 877	69,8	
	Industrial and warehouse space	square metres	14 126	19 590	5 175	26 167	24 765	-5,4	
		R'000	90 084	132 234	35 880	168 563	168 114	-0,3	
	Other non-residential buildings 3/	square metres	8 688	3 222	8 159	9 185	11 381	23,9	
		R'000	53 758	22 377	54 400	56 497	76 777	35,9	
	Total non-residential buildings		R'000	177 069	212 108	91 357	321 367	303 465	-5,6
	Additions and alterations	Dwelling-houses	square metres	50 296	33 182	30 254	84 341	63 436	-24,8
R'000			272 379	196 504	184 422	458 072	380 926	-16,8	
Other buildings 4/		square metres	7 159	9 146	9 155	17 242	18 301	6,1	
		R'000	96 516	114 041	91 946	223 295	205 987	-7,8	
Total additions and alterations		R'000	368 895	310 545	276 368	681 367	586 913	-13,9	
Recorded buildings completed	Total at current prices		R'000	1 699 914	1 218 854	1 291 627	2 491 784	2 510 481	0,8

1/ The percentage change between cumulative figures for 2017 and 2018.

2/ Other residential buildings include institutions for the disabled, boarding houses, hostels and tourism accommodation e.g. hotels, motels, guest-houses, holiday chalets, bed-and-breakfast accommodation and casinos.

3/ Other non-residential space includes churches, sport and recreation clubs, schools, crèches, hospitals and all other non-residential space.

4/ Other buildings include other residential buildings, non-residential buildings and internal alterations. No square metres are collected for internal alterations.

Table 21 – Buildings reported as completed to larger municipalities at current prices by type of building: Eastern Cape

			Feb. 2017	Jan. 2018	Feb. 2018	Jan. - Feb. 2017	Jan. - Feb. 2018	% change 1/	
Category of building	Type of building	Measuring unit							
Residential buildings	Dwelling-houses < 80 square metres	Number	11	18	6	21	24	14,3	
		square metres	570	889	325	1 155	1 214	5,1	
		R'000	2 487	4 451	1 688	5 769	6 139	6,4	
	Dwelling-houses >= 80 square metres	Number	51	33	33	81	66	-18,5	
		square metres	11 977	7 983	7 074	19 335	15 057	-22,1	
		R'000	60 184	51 922	45 298	98 037	97 220	-0,8	
	Flats and townhouses	Number	1	2	1	13	3	-76,9	
		square metres	138	298	71	1 036	369	-64,4	
		R'000	853	1 892	433	5 916	2 325	-60,7	
	Other residential buildings 2/	square metres	3 139	0	0	3 139	0	..	
		R'000	17 775	0	0	17 775	0	..	
	Total residential buildings		R'000	81 299	58 265	47 419	127 497	105 684	-17,1
Non-residential buildings	Office and banking space	square metres	3 023	0	392	3 023	392	-87,0	
		R'000	13 483	0	2 696	13 483	2 696	-80,0	
	Shopping space	square metres	1 158	413	0	1 158	413	-64,3	
		R'000	5 722	1 746	0	5 722	1 746	-69,5	
	Industrial and warehouse space	square metres	3 640	3 183	2 815	3 780	5 998	58,7	
		R'000	18 131	20 206	17 273	18 691	37 479	100,5	
	Other non-residential buildings 3/	square metres	126	0	118	126	118	-6,3	
		R'000	783	0	749	783	749	-4,3	
	Total non-residential buildings		R'000	38 119	21 952	20 718	38 679	42 670	10,3
	Additions and alterations	Dwelling-houses	square metres	7 295	7 786	6 101	12 449	13 887	11,6
R'000			33 896	48 958	38 860	58 883	87 818	49,1	
Other buildings 4/		square metres	259	2 928	2 801	663	5 729	764,1	
		R'000	2 288	21 895	17 782	4 548	39 677	772,4	
Total additions and alterations		R'000	36 184	70 853	56 642	63 431	127 495	101,0	
Recorded buildings completed	Total at current prices		R'000	155 602	151 070	124 779	229 607	275 849	20,1

1/ The percentage change between cumulative figures for 2017 and 2018.

2/ Other residential buildings include institutions for the disabled, boarding houses, hostels and tourism accommodation e.g. hotels, motels, guest-houses, holiday chalets, bed-and-breakfast accommodation and casinos.

3/ Other non-residential space includes churches, sport and recreation clubs, schools, crèches, hospitals and all other non-residential space.

4/ Other buildings include other residential buildings, non-residential buildings and internal alterations. No square metres are collected for internal alterations.

Table 22 – Buildings reported as completed to larger municipalities at current prices by type of building: Northern Cape

			Feb. 2017	Jan. 2018	Feb. 2018	Jan. - Feb. 2017	Jan. - Feb. 2018	% change 1/
Category of building	Type of building	Measuring unit						
Residential buildings	Dwelling-houses < 80 square metres	Number	0	0	0	0	0	..
		square metres	0	0	0	0	0	..
		R'000	0	0	0	0	0	..
	Dwelling-houses >= 80 square metres	Number	4	2	3	14	5	-64,3
		square metres	830	301	990	3 046	1 291	-57,6
		R'000	6 187	2 107	6 930	21 379	9 037	-57,7
	Flats and townhouses	Number	2	0	0	2	0	..
		square metres	171	0	0	171	0	..
		R'000	1 112	0	0	1 112	0	..
	Other residential buildings 2/	square metres	0	0	0	935	0	..
		R'000	0	0	0	5 512	0	..
	Total residential buildings	R'000	7 299	2 107	6 930	28 003	9 037	-67,7
	Non-residential buildings	Office and banking space	square metres	0	0	0	0	0
R'000			0	0	0	0	0	..
Shopping space		square metres	120	0	0	120	0	..
		R'000	720	0	0	720	0	..
Industrial and warehouse space		square metres	0	0	0	0	0	..
		R'000	0	0	0	0	0	..
Other non-residential buildings 3/		square metres	0	0	0	0	0	..
		R'000	0	0	0	0	0	..
Total non-residential buildings		R'000	720	0	0	720	0	..
Additions and alterations		Dwelling-houses	square metres	836	1 684	2 721	1 931	4 405
	R'000		8 180	12 580	20 179	15 798	32 759	107,4
	Other buildings 4/	square metres	84	82	472	1 567	554	-64,6
		R'000	565	555	3 304	13 769	3 859	-72,0
Total additions and alterations	R'000	8 745	13 135	23 483	29 567	36 618	23,8	
Recorded buildings completed	Total at current prices	R'000	16 764	15 242	30 413	58 290	45 655	-21,7

1/ The percentage change between cumulative figures for 2017 and 2018.

2/ Other residential buildings include institutions for the disabled, boarding houses, hostels and tourism accommodation e.g. hotels, motels, guest-houses, holiday chalets, bed-and-breakfast accommodation and casinos.

3/ Other non-residential space includes churches, sport and recreation clubs, schools, crèches, hospitals and all other non-residential space.

4/ Other buildings include other residential buildings, non-residential buildings and internal alterations. No square metres are collected for internal alterations.

Table 23 – Buildings reported as completed to larger municipalities at current prices by type of building: Free State

			Feb. 2017	Jan. 2018	Feb. 2018	Jan. - Feb. 2017	Jan. - Feb. 2018	% change 1/	
Category of building	Type of building	Measuring unit							
Residential buildings	Dwelling-houses < 80 square metres	Number	3	29	29	46	58	26,1	
		square metres	176	1 493	1 765	2 717	3 258	19,9	
		R'000	1 018	3 733	12 950	14 796	16 683	12,8	
	Dwelling-houses >= 80 square metres	Number	5	14	19	12	33	175,0	
		square metres	975	2 393	4 302	2 092	6 695	220,0	
		R'000	5 311	16 398	25 636	11 601	42 034	262,3	
	Flats and townhouses	Number	0	112	0	0	112	..	
		square metres	0	15 607	0	0	15 607	..	
		R'000	0	115 585	0	0	115 585	..	
	Other residential buildings 2/	square metres	0	143	259	0	402	..	
		R'000	0	681	1 463	0	2 144	..	
	Total residential buildings		R'000	6 329	136 397	40 049	26 397	176 446	568,4
	Non-residential buildings	Office and banking space	square metres	0	201	262	0	463	..
R'000			0	1 233	1 663	0	2 896	..	
Shopping space		square metres	786	0	933	786	933	18,7	
		R'000	3 990	0	5 923	3 990	5 923	48,4	
Industrial and warehouse space		square metres	0	535	0	1 230	535	-56,5	
		R'000	0	3 396	0	6 765	3 396	-49,8	
Other non-residential buildings 3/		square metres	0	326	0	0	326	..	
		R'000	0	2 000	0	0	2 000	..	
Total non-residential buildings		R'000	3 990	6 629	7 586	10 755	14 215	32,2	
Additions and alterations	Dwelling-houses	square metres	784	4 130	2 597	1 312	6 727	412,7	
		R'000	3 540	20 972	13 937	6 422	34 909	443,6	
	Other buildings 4/	square metres	0	35	919	132	954	622,7	
		R'000	4 814	614	7 410	5 816	8 024	38,0	
Total additions and alterations		R'000	8 354	21 586	21 347	12 238	42 933	250,8	
Recorded buildings completed	Total at current prices		R'000	18 673	164 612	68 982	49 390	233 594	373,0

1/ The percentage change between cumulative figures for 2017 and 2018.

2/ Other residential buildings include institutions for the disabled, boarding houses, hostels and tourism accommodation e.g. hotels, motels, guest-houses, holiday chalets, bed-and-breakfast accommodation and casinos.

3/ Other non-residential space includes churches, sport and recreation clubs, schools, crèches, hospitals and all other non-residential space.

4/ Other buildings include other residential buildings, non-residential buildings and internal alterations. No square metres are collected for internal alterations.

Table 24 – Buildings reported as completed to larger municipalities at current prices by type of building: KwaZulu-Natal

			Feb. 2017	Jan. 2018	Feb. 2018	Jan. - Feb. 2017	Jan. - Feb. 2018	% change 1/	
Category of building	Type of building	Measuring unit							
Residential buildings	Dwelling-houses < 80 square metres	Number	9	8	12	9	20	122,2	
		square metres	537	478	633	537	1 111	106,9	
		R'000	4 532	5 279	6 528	4 532	11 807	160,5	
	Dwelling-houses >= 80 square metres	Number	71	93	81	121	174	43,8	
		square metres	21 494	21 579	19 825	36 302	41 404	14,1	
		R'000	192 097	228 894	190 747	328 036	419 641	27,9	
	Flats and townhouses	Number	62	34	52	148	86	-41,9	
		square metres	8 657	5 254	12 082	16 840	17 336	2,9	
		R'000	82 503	53 845	121 656	159 636	175 501	9,9	
	Other residential buildings 2/	square metres	0	858	0	11 467	858	-92,5	
		R'000	0	10 211	0	129 566	10 211	-92,1	
	Total residential buildings		R'000	279 132	298 229	318 931	621 770	617 160	-0,7
Non-residential buildings	Office and banking space	square metres	1 893	654	231	1 893	885	-53,2	
		R'000	9 464	7 194	1 617	9 464	8 811	-6,9	
	Shopping space	square metres	0	0	734	1 444	734	-49,2	
		R'000	0	0	8 074	15 162	8 074	-46,7	
	Industrial and warehouse space	square metres	11 846	0	6 800	29 390	6 800	-76,9	
		R'000	67 522	0	40 976	165 612	40 976	-75,3	
	Other non-residential buildings 3/	square metres	3 598	382	1 778	4 282	2 160	-49,6	
		R'000	29 708	2 674	16 050	34 975	18 724	-46,5	
	Total non-residential buildings		R'000	106 694	9 868	66 717	225 213	76 585	-66,0
	Additions and alterations	Dwelling-houses	square metres	11 208	9 758	23 099	20 040	32 857	64,0
R'000			120 630	111 328	196 600	201 518	307 928	52,8	
Other buildings 4/		square metres	5 443	1 349	4 178	12 890	5 527	-57,1	
		R'000	63 840	15 570	43 720	124 022	59 290	-52,2	
Total additions and alterations		R'000	184 470	126 898	240 320	325 540	367 218	12,8	
Recorded buildings completed	Total at current prices		R'000	570 296	434 995	625 968	1 172 523	1 060 963	-9,5

1/ The percentage change between cumulative figures for 2017 and 2018.

2/ Other residential buildings include institutions for the disabled, boarding houses, hostels and tourism accommodation e.g. hotels, motels, guest-houses, holiday chalets, bed-and-breakfast accommodation and casinos.

3/ Other non-residential space includes churches, sport and recreation clubs, schools, crèches, hospitals and all other non-residential space.

4/ Other buildings include other residential buildings, non-residential buildings and internal alterations. No square metres are collected for internal alterations.

Table 25 – Buildings reported as completed to larger municipalities at current prices by type of building: North West

			Feb. 2017	Jan. 2018	Feb. 2018	Jan. - Feb. 2017	Jan. - Feb. 2018	% change 1/	
Category of building	Type of building	Measuring unit							
Residential buildings	Dwelling-houses < 80 square metres	Number	46	4	46	56	50	-10,7	
		square metres	2 508	234	2 940	3 131	3 174	1,4	
		R'000	10 141	1 170	16 083	12 867	17 253	34,1	
	Dwelling-houses >= 80 square metres	Number	29	34	130	61	164	168,9	
		square metres	6 181	8 909	22 637	13 358	31 546	136,2	
		R'000	28 139	51 456	133 816	64 408	185 272	187,7	
	Flats and townhouses	Number	24	127	83	55	210	281,8	
		square metres	2 507	13 219	9 345	5 195	22 564	334,3	
		R'000	14 398	83 472	48 085	28 175	131 557	366,9	
	Other residential buildings 2/	square metres	0	0	0	0	0	..	
		R'000	0	0	0	0	0	..	
	Total residential buildings		R'000	52 678	136 098	197 984	105 450	334 082	216,8
Non-residential buildings	Office and banking space	square metres	0	881	548	0	1 429	..	
		R'000	0	4 942	3 479	0	8 421	..	
	Shopping space	square metres	4 028	0	525	4 840	525	-89,2	
		R'000	22 154	0	2 625	26 569	2 625	-90,1	
	Industrial and warehouse space	square metres	0	2 473	0	1 574	2 473	57,1	
		R'000	0	10 635	0	7 084	10 635	50,1	
	Other non-residential buildings 3/	square metres	0	0	3 255	0	3 255	..	
		R'000	0	0	19 609	0	19 609	..	
	Total non-residential buildings		R'000	22 154	15 577	25 713	33 653	41 290	22,7
	Additions and alterations	Dwelling-houses	square metres	4 999	2 266	25 972	5 350	28 238	427,8
R'000			22 491	13 132	161 307	24 043	174 439	625,5	
Other buildings 4/		square metres	1 204	57	2 441	1 254	2 498	99,2	
		R'000	6 462	535	13 129	7 548	13 664	81,0	
Total additions and alterations		R'000	28 953	13 667	174 436	31 591	188 103	495,4	
Recorded buildings completed	Total at current prices		R'000	103 785	165 342	398 133	170 694	563 475	230,1

1/ The percentage change between cumulative figures for 2017 and 2018.

2/ Other residential buildings include institutions for the disabled, boarding houses, hostels and tourism accommodation e.g. hotels, motels, guest-houses, holiday chalets, bed-and-breakfast accommodation and casinos.

3/ Other non-residential space includes churches, sport and recreation clubs, schools, crèches, hospitals and all other non-residential space.

4/ Other buildings include other residential buildings, non-residential buildings and internal alterations. No square metres are collected for internal alterations.

Table 26 – Buildings reported as completed to larger municipalities at current prices by type of building: Gauteng

			Feb. 2017	Jan. 2018	Feb. 2018	Jan. - Feb. 2017	Jan. - Feb. 2018	% change 1/	
Category of building	Type of building	Measuring unit							
Residential buildings	Dwelling-houses < 80 square metres	Number	428	72	543	531	615	15,8	
		square metres	20 687	3 990	23 968	26 382	27 958	6,0	
		R'000	90 254	23 588	116 020	118 769	139 608	17,5	
	Dwelling-houses >= 80 square metres	Number	264	216	203	578	419	-27,5	
		square metres	85 260	64 394	69 497	202 210	133 891	-33,8	
		R'000	641 128	557 445	554 352	1 595 600	1 111 797	-30,3	
	Flats and townhouses	Number	603	406	391	1 239	797	-35,7	
		square metres	59 994	44 309	69 787	112 579	114 096	1,3	
		R'000	451 915	394 234	541 897	946 275	936 131	-1,1	
	Other residential buildings 2/	square metres	6 729	0	1 260	7 654	1 260	-83,5	
		R'000	47 863	0	8 807	53 974	8 807	-83,7	
	Total residential buildings		R'000	1 231 160	975 267	1 221 076	2 714 618	2 196 343	-19,1
	Non-residential buildings	Office and banking space	square metres	8 553	19 355	76 493	78 281	95 848	22,4
R'000			83 100	218 217	709 169	855 361	927 386	8,4	
Shopping space		square metres	3 695	3 805	9 307	4 419	13 112	196,7	
		R'000	34 176	37 571	73 370	40 933	110 941	171,0	
Industrial and warehouse space		square metres	43 964	38 653	95 578	73 109	134 231	83,6	
		R'000	263 630	238 155	462 454	408 506	700 609	71,5	
Other non-residential buildings 3/		square metres	8 117	5 887	6 180	11 892	12 067	1,5	
		R'000	55 367	46 957	54 607	81 166	101 564	25,1	
Total non-residential buildings		R'000	436 273	540 900	1 299 600	1 385 966	1 840 500	32,8	
Additions and alterations		Dwelling-houses	square metres	14 685	14 470	23 634	31 640	38 104	20,4
	R'000		106 937	119 234	173 893	233 234	293 127	25,7	
	Other buildings 4/	square metres	7 486	8 421	7 523	17 761	15 944	-10,2	
		R'000	72 860	81 902	54 754	165 574	136 656	-17,5	
	Total additions and alterations		R'000	179 797	201 136	228 647	398 808	429 783	7,8
Recorded buildings completed	Total at current prices		R'000	1 847 230	1 717 303	2 749 323	4 499 392	4 466 626	-0,7

1/ The percentage change between cumulative figures for 2017 and 2018.

2/ Other residential buildings include institutions for the disabled, boarding houses, hostels and tourism accommodation e.g. hotels, motels, guest-houses, holiday chalets, bed-and-breakfast accommodation and casinos.

3/ Other non-residential space includes churches, sport and recreation clubs, schools, crèches, hospitals and all other non-residential space.

4/ Other buildings include other residential buildings, non-residential buildings and internal alterations. No square metres are collected for internal alterations.

Table 27 – Buildings reported as completed to larger municipalities at current prices by type of building: Mpumalanga

			Feb. 2017	Jan. 2018	Feb. 2018	Jan. - Feb. 2017	Jan. - Feb. 2018	% change 1/	
Category of building	Type of building	Measuring unit							
Residential buildings	Dwelling-houses < 80 square metres	Number	70	0	56	124	56	-54,8	
		square metres	3 507	0	3 163	5 927	3 163	-46,6	
		R'000	14 917	0	17 859	21 495	17 859	-16,9	
	Dwelling-houses >= 80 square metres	Number	18	11	75	40	86	115,0	
		square metres	4 137	2 823	17 246	10 468	20 069	91,7	
		R'000	22 964	15 774	102 301	51 224	118 075	130,5	
	Flats and townhouses	Number	148	0	0	160	0	..	
		square metres	16 340	0	0	17 582	0	..	
		R'000	75 164	0	0	80 877	0	..	
	Other residential buildings 2/	square metres	0	0	0	0	0	..	
		R'000	0	0	0	0	0	..	
	Total residential buildings		R'000	113 045	15 774	120 160	153 596	135 934	-11,5
Non-residential buildings	Office and banking space	square metres	0	0	0	0	0	..	
		R'000	0	0	0	0	0	..	
	Shopping space	square metres	0	0	0	5 300	0	..	
		R'000	0	0	0	25 155	0	..	
	Industrial and warehouse space	square metres	0	0	0	8 286	0	..	
		R'000	0	0	0	37 287	0	..	
	Other non-residential buildings 3/	square metres	0	0	0	1 972	0	..	
		R'000	0	0	0	9 863	0	..	
	Total non-residential buildings		R'000	0	0	0	72 305	0	..
	Additions and alterations	Dwelling-houses	square metres	4 716	3 141	2 943	8 939	6 084	-31,9
R'000			19 480	17 213	17 271	37 416	34 484	-7,8	
Other buildings 4/		square metres	0	2 551	821	1 292	3 372	161,0	
		R'000	1 958	15 406	4 767	8 441	20 173	139,0	
Total additions and alterations		R'000	21 438	32 619	22 038	45 857	54 657	19,2	
Recorded buildings completed	Total at current prices		R'000	134 483	48 393	142 198	271 758	190 591	-29,9

1/ The percentage change between cumulative figures for 2017 and 2018.

2/ Other residential buildings include institutions for the disabled, boarding houses, hostels and tourism accommodation e.g. hotels, motels, guest-houses, holiday chalets, bed-and-breakfast accommodation and casinos.

3/ Other non-residential space includes churches, sport and recreation clubs, schools, crèches, hospitals and all other non-residential space.

4/ Other buildings include other residential buildings, non-residential buildings and internal alterations. No square metres are collected for internal alterations.

Table 28 – Buildings reported as completed to larger municipalities at current prices by type of building: Limpopo

			Feb. 2017	Jan. 2018	Feb. 2018	Jan. - Feb. 2017	Jan. - Feb. 2018	% change 1/	
Category of building	Type of building	Measuring unit							
Residential buildings	Dwelling-houses < 80 square metres	Number	4	9	4	14	13	-7,1	
		square metres	216	515	271	774	786	1,6	
		R'000	1 080	2 724	1 434	3 870	4 158	7,4	
	Dwelling-houses >= 80 square metres	Number	26	19	19	35	38	8,6	
		square metres	5 828	5 294	5 017	8 860	10 311	16,4	
		R'000	28 169	26 698	26 025	43 163	52 723	22,1	
	Flats and townhouses	Number	8	5	16	8	21	162,5	
		square metres	756	478	2 228	756	2 706	257,9	
		R'000	4 582	2 033	11 786	4 582	13 819	201,6	
	Other residential buildings 2/	square metres	5 752	1 438	0	5 752	1 438	-75,0	
		R'000	28 760	7 607	0	28 760	7 607	-73,6	
	Total residential buildings		R'000	62 591	39 062	39 245	80 375	78 307	-2,6
Non-residential buildings	Office and banking space	square metres	522	0	0	800	0	..	
		R'000	2 714	0	0	4 104	0	..	
	Shopping space	square metres	0	0	204	158	204	29,1	
		R'000	0	0	1 079	790	1 079	36,6	
	Industrial and warehouse space	square metres	1 197	0	1 635	4 863	1 635	-66,4	
		R'000	5 985	0	8 649	24 315	8 649	-64,4	
	Other non-residential buildings 3/	square metres	0	0	0	0	0	..	
		R'000	0	0	0	0	0	..	
	Total non-residential buildings		R'000	8 699	0	9 728	29 209	9 728	-66,7
	Additions and alterations	Dwelling-houses	square metres	636	342	520	938	862	-8,1
R'000			2 945	1 754	2 650	4 406	4 404	0,0	
Other buildings 4/		square metres	0	0	632	158	632	300,0	
		R'000	0	500	6 477	2 290	6 977	204,7	
Total additions and alterations		R'000	2 945	2 254	9 127	6 696	11 381	70,0	
Recorded buildings completed	Total at current prices		R'000	74 235	41 316	58 100	116 280	99 416	-14,5

1/ The percentage change between cumulative figures for 2017 and 2018.

2/ Other residential buildings include institutions for the disabled, boarding houses, hostels and tourism accommodation e.g. hotels, motels, guest-houses, holiday chalets, bed-and-breakfast accommodation and casinos.

3/ Other non-residential space includes churches, sport and recreation clubs, schools, crèches, hospitals and all other non-residential space.

4/ Other buildings include other residential buildings, non-residential buildings and internal alterations. No square metres are collected for internal alterations.

Explanatory notes

Introduction	1	Statistics South Africa (Stats SA) conducts a monthly building statistics survey collecting information regarding building plans passed and buildings completed, financed by the private sector, from the largest local government institutions in South Africa. According to these institutions, they are not always notified about low-cost housing projects and, therefore, do not include the bulk of low-cost dwelling-houses in their reporting. Data regarding subsidised low-cost dwelling-houses can be obtained from the Department of Human Settlements.
	2	In order to improve timeliness of the publication, some information for the current month has been estimated due to late submission by respondents. These estimates will be revised in the next statistical release(s) as soon as actual information is available.
Purpose of the survey	3	The monthly survey data are used in monitoring the state of economy and formulation of economic policy. Furthermore, the results are important inputs to estimate the gross domestic product (GDP) and to calculate the Composite Leading Business Cycle Indicator. The data are extensively used by the private sector.
Scope of the survey	4	This survey covers local government institutions conducting activities for the private sector regarding - <ul style="list-style-type: none"> • passing of building plans; and • final inspection of completed buildings.
Classification	5	Building activities are classified in division 5 according to the 1993 edition of the <i>Standard Industrial Classification of all Economic Activities</i> , (SIC) Fifth Edition, Report No. 09-90-02. The SIC is based on the 1990 <i>International Standard Industrial Classification of all Economic Activities</i> (ISIC) with suitable adaptations for local conditions.
Collection rate	6	The preliminary collection rate for the survey on building statistics for February 2018 was 93,6%. The improved collection rate for January 2018 was 94,5%.
Statistical unit	7	The statistical unit for the collection of information is a local government institution. Local government institutions include district municipalities, metropolitan municipalities and local municipalities.
Survey methodology and design	8	Stats SA conducts a monthly survey of metropolitan municipalities and large local municipalities on building plans passed and buildings completed. An annual survey of the remaining municipalities is conducted regarding buildings completed. The monthly survey represents approximately 85 percent of the total value of buildings completed. Information regarding building plans passed and buildings completed for the private sector is collected by mail, fax and telephone.
Constant prices	9	The value of building plans passed and buildings completed at constant prices measures building activities in terms of ruling prices in a specific base year, which is currently 2015. The value of building plans passed at constant prices for each month is obtained by deflating the values at current prices with a price index known as the 'lump sum domestic buildings' as published in statistical release P0151: <i>Contract Price Adjustment Provisions (CPAP) Work Groups and Selected Materials Indices</i> . In order to be applicable, these indices (base December 2016=100) are converted to the base year 2015=100.

- Seasonal adjustment** 10 Seasonally adjusted estimates of building plans passed and buildings completed are generated each month, using the X-12-ARIMA Seasonal Adjustment Program developed by US Bureau of the Census Economic Research and Analyses Division, 1968.
- 11 Seasonal adjustment is a means of removing the estimated effects of normal seasonal variation from the series so that the effects of other influences on the series can be more clearly recognised. Seasonal adjustment does not aim to remove irregular or non-seasonal influences which may be present in any particular month. Influences that are volatile or unsystematic can still make it difficult to interpret the movement of the series even after adjustment for seasonal variations. Therefore, the month-to-month movements of seasonally adjusted estimates may not be reliable indicators of trend behaviour. The X-12-ARIMA procedure for building statistics is described in more detail on the Stats SA website at [Click to download building statistics seasonal adjustment May 2017](#)
- Trend cycle** 12 The trend is a long-term pattern or movement of a time series. The X-12-ARIMA Seasonal Adjustment Program is used for smoothing seasonally adjusted data.
- Revised figures** 13 Revised figures are due to late submission of data to Stats SA, or to respondents reporting revisions or corrections to their figures. Figures for the latest two years are therefore preliminary. Data are edited at municipal level.
- 14 Once a year the annual statistical release P5041.3: *Selected building statistics of the private sector as reported by local government institutions* is published with the revised and updated information at provincial and municipal level for the previous calendar year. Due to this comprehensive revision, the monthly statistical release P5041.1 reflects provincial revision where applicable.
- Related publications** 15 Users may also wish to refer to the following publications:
- P5041.3: *Selected building statistics of the private sector as reported by local government institutions* issued annually.
 - P9101.2: *Actual and expected expenditure on construction by the public sector per statistical region* issued annually.
 - *Building Statistics* (Report No. 50-11-01) issued annually.
- Rounding-off of figures** 16 Where necessary, the figures in the tables have been rounded off to the nearest digit shown.

Symbols and abbreviations

17	..	no meaningful percentage change between two specified periods available since either one or both of the totals are nil
	0	nil or figure too small to publish
	*	revised
	Stats SA	Statistics South Africa
	SIC	Standard Industrial Classification of all Economic Activities
	ISIC	International Standard Industrial Classification of all Economic Activities

Glossary

Additions and alterations	Extensions to existing buildings as well as internal and external alterations of existing buildings.
Blocks of flats	High-density housing consisting of a number of self-contained dwelling-units, each with at least one living-room together with a kitchen and bathroom, conjoined to similar units in one building.
Dwelling-house	A free-standing, complete structure on a separate stand or a self-contained dwelling-unit, e.g. granny flat, on the same premises as an existing residence. Out-buildings and garages are included.
Local government institutions	Include – <ul style="list-style-type: none"> • District municipalities; • Metropolitan municipalities; and • Local municipalities.
Municipality	A generic term describing the “unit” of government in the local spheres responsible for local government in a geographically demarcated area and including district, metropolitan and local municipalities. It is an institution consisting of a municipal council (elected political representatives) and municipal administration (appointed officials).
District municipality	A municipality that has municipal executive and legislative authority in an area that includes more than one municipality, and which is described in section 155(1) of the Constitution as a category C municipality (refer to Local Government: Municipal Structure Act, 1998 (Act No. 117 of 1998)).
Metropolitan municipality	A municipality that has municipal executive and legislative authority in an area that includes more than one municipality, and which is described in section 155(1) of the Constitution as a category A municipality (refer to Local Government: Municipal Structure Act, 1998 (Act No. 117 of 1998)).
Local municipality	A municipality that shares municipal executive and legislative authority in its area with a district municipality within whose area it falls, which is described in section 155(1) of the constitution as a category B municipality.
Non-residential buildings	Factories and commercial, financial and other office buildings, as well as other buildings not used for residential purposes, such as churches, halls, clubs, schools and hospitals.
Other residential buildings	Institutions for the disabled, boarding houses, old people’s homes, hostels, hotels, motels, guesthouses, holiday chalets, bed-and-breakfast accommodation, entertainment centres and casinos.
Percentage change	<p>When using monthly actual values, the percentage change is the change in actual values of building activities (building plans passed or buildings completed) of the relevant month compared with the actual values of building activities (building plans passed or buildings completed) of the same month in the previous year expressed as a percentage.</p> <p>When using annual actual values, the percentage change is the change in the actual values of building activities (building plans passed or buildings completed) of the relevant year compared with the actual values of building activities (building plans passed or buildings completed) of the previous year expressed as a percentage.</p> <p>When using seasonally adjusted values, the percentage change is the change in the seasonally adjusted values of building activities (building plans passed or buildings completed) of the relevant month compared with the seasonally adjusted values of building activities (building plans passed or buildings completed) of the previous month expressed as a percentage.</p>

Reference period One calendar month.

Residential buildings Buildings that are used primarily as residences. Includes dwelling-houses, flats, townhouses and other residential buildings.

Townhouses Multiple, medium-density dwelling-units including cluster housing, group housing, simplexes, duplexes, triplexes and other similar dwelling-units which are usually grouped together, with one level of each unit on ground level. This category excludes blocks of flats.

Technical enquiries

Suzzie Mnguni Telephone number: (012) 310 8134
Email: suzziemn@statssa.gov.za

Nicolai Claassen Telephone number: (012) 310 8007
Email: nicolaic@statssa.gov.za

General information

Stats SA publishes approximately 300 different statistical releases each year. It is not economically viable to produce them in more than one of South Africa's eleven official languages. Since the releases are used extensively, not only locally but also by international economic and social-scientific communities, Stats SA releases are published in English.

Stats SA has copyright on this publication. Users may apply the information as they wish, provided that they acknowledge Stats SA as the source of the basic data wherever they process, apply, utilise, publish or distribute the data and also that they specify that the relevant application and analysis (where applicable) result from their own processing of the data.

Advance release calendar

An advance release calendar is disseminated on www.statssa.gov.za

Stats SA products

A complete set of Stats SA publications is available at the Stats SA Library and the following libraries:

National Library of South Africa, Pretoria Division
National Library of South Africa, Cape Town Division
Natal Society Library, Pietermaritzburg
Library of Parliament, Cape Town
Bloemfontein Public Library
Johannesburg Public Library
Eastern Cape Library Services, King William's Town
Central Regional Library, Polokwane
Central Reference Library, Mbombela
Central Reference Collection, Kimberley
Central Reference Library, Mmabatho

Stats SA also provides a subscription service.

Electronic services

A large range of data is available via online services. For more details about our electronic services, contact Stats SA's user information service at (012) 310 8600.

You can visit us on the Internet at: www.statssa.gov.za

General enquiries

User information services Telephone number: (012) 310 8600
Email address: info@statssa.gov.za

Postal address Private Bag X44, Pretoria, 0001

Produced by Stats SA