

STATISTICAL RELEASE
P5041.1

**Selected building statistics of the private sector
as reported by local government institutions
(Preliminary)**

August 2018

**Embargoed until:
18 October 2018
13:00**

ENQUIRIES:
Nicolai Claassen
Tel: (012) 310 8007

FORTHCOMING ISSUE:
September 2018

EXPECTED RELEASE DATE:
15 November 2018

www.statssa.gov.za
info@statssa.gov.za
T +27 12 310 8911
F +27 12 310 8500

Private Bag X44, Pretoria, 0001, South Africa
ISibalo House, Koch Street, Salvokop, Pretoria, 0002



Contents

Results for January to August 2018.....	3
Tables	
Table 1 Value and percentage change of recorded building plans passed by larger municipalities at current prices by type of building	9
Table 2 Seasonally adjusted value and percentage change of recorded building plans passed by larger municipalities at current prices by type of building	10
Table 3 Value and percentage change of recorded building plans passed by larger municipalities at constant 2015 prices by type of building	11
Table 4 Seasonally adjusted value and percentage change of recorded building plans passed by larger municipalities at constant 2015 prices by type of building	12
Table 5 Value and percentage change of buildings reported as completed to larger municipalities at current prices by type of building	13
Table 6 Seasonally adjusted value and percentage change of buildings reported as completed to larger municipalities at current prices by type of building	14
Table 7 Value and percentage change of buildings reported as completed to larger municipalities at constant 2015 prices by type of building	15
Table 8 Seasonally adjusted value and percentage change of buildings reported as completed to larger municipalities at constant 2015 prices by type of building	16
Table 9 Recorded building plans passed by larger municipalities at current prices by type of building: South	17
Table 10 Recorded building plans passed by larger municipalities at current prices by type of building: Western Cape	18
Table 11 Recorded building plans passed by larger municipalities at current prices by type of building: Eastern Cape	19
Table 12 Recorded building plans passed by larger municipalities at current prices by type of building: Northern Cape	20
Table 13 Recorded building plans passed by larger municipalities at current prices by type of building: Free State	21
Table 14 Recorded building plans passed by larger municipalities at current prices by type of building: KwaZulu-Natal	22
Table 15 Recorded building plans passed by larger municipalities at current prices by type of building: North West	23
Table 16 Recorded building plans passed by larger municipalities at current prices by type of building: Gauteng	24
Table 17 Recorded building plans passed by larger municipalities at current prices by type of building: Mpumalanga	25
Table 18 Recorded building plans passed by larger municipalities at current prices by type of building: Limpopo	26
Table 19 Buildings reported as completed to larger municipalities at current prices by type of building: South Africa	27
Table 20 Buildings reported as completed to larger municipalities at current prices by type of building: Western Cape	28
Table 21 Buildings reported as completed to larger municipalities at current prices by type of building: Eastern Cape	29
Table 22 Buildings reported as completed to larger municipalities at current prices by type of building: Northern Cape	30
Table 23 Buildings reported as completed to larger municipalities at current prices by type of building: Free State	31
Table 24 Buildings reported as completed to larger municipalities at current prices by type of building: KwaZulu-Natal	32
Table 25 Buildings reported as completed to larger municipalities at current prices by type of building: North West	33

Table 26	Buildings reported as completed to larger municipalities at current prices by type of building: Gauteng	34
Table 27	Buildings reported as completed to larger municipalities at current prices by type of building: Mpumalanga	35
Table 28	Buildings reported as completed to larger municipalities at current prices by type of building: Limpopo	36
Explanatory notes		37
Glossary		40
Technical enquiries		41
General information		42

Results for January to August 2018

**Table A – Recorded building plans passed by larger municipalities at current prices:
January to August 2017 versus January to August 2018**

Estimates at current prices	January to August 2017	January to August 2018	Difference in value between January to August 2017 and January to August 2018	% change between January to August 2017 and January to August 2018
	1/ R'000	1/ R'000		
Residential buildings	36 708 381	39 300 718	2 592 337	7,1
-Dwelling-houses	21 984 645	22 382 820	398 175	1,8
-Flats and townhouses	14 341 749	15 440 357	1 098 608	7,7
-Other residential buildings	381 987	1 477 541	1 095 554	286,8
Non-residential buildings	17 823 124	16 019 071	-1 804 053	-10,1
Additions and alterations	18 796 304	19 505 293	708 989	3,8
Total	73 327 809	74 825 082	1 497 273	2,0

1/ 2017 and 2018 figures should be regarded as preliminary because of possible backlogs and incomplete reporting by municipalities.

Total value of recorded building plans passed at current prices

The value of recorded building plans passed (at current prices) increased by 2,0% (R1 497,3 million) during January to August 2018 compared with January to August 2017.

Increases were recorded for residential buildings (7,1% or R2 592,3 million) and additions and alterations (3,8% or R709,0 million). A decrease was recorded for non-residential buildings (-10,1% or -R1 804,1 million) – see Table A.

**Table B – Recorded building plans passed by larger municipalities aggregated to provincial level:
January to August 2017 versus January to August 2018**

Estimates at current prices	January to August 2017	January to August 2018	% contribution to the total value of building plans passed during January to August 2017	% change between January to August 2017 and January to August 2018	Contribution (% points) to the % change in the value of building plans passed between January to August 2017 and January to August 2018	Difference in value between January to August 2017 and January to August 2018
	1/ R'000	1/ R'000				
Western Cape	19 722 778	22 813 342	26,9	15,7	4,2	3 090 564
Eastern Cape	4 330 916	4 528 797	5,9	4,6	0,3	197 881
Northern Cape	503 212	698 048	0,7	38,7	0,3	194 836
Free State	2 224 130	2 636 491	3,0	18,5	0,6	412 361
KwaZulu-Natal	13 871 944	13 230 824	18,9	-4,6	-0,9	-641 120
North West	2 474 216	2 033 301	3,4	-17,8	-0,6	-440 915
Gauteng	26 796 458	25 274 147	36,5	-5,7	-2,1	-1 522 311
Mpumalanga	2 022 294	2 518 146	2,8	24,5	0,7	495 852
Limpopo	1 381 861	1 091 986	1,9	-21,0	-0,4	-289 875
Total	73 327 809	74 825 082	100,0	2,0	2,0	1 497 273

1/ 2017 and 2018 figures should be regarded as preliminary because of possible backlogs and incomplete reporting by municipalities.

2/ The contribution (percentage points) is calculated by multiplying the percentage change of each province between January to August 2017 and January to August 2018 by the percentage contribution of the corresponding province to the total value of building plans passed during January to August 2017, divided by 100.

The largest positive contribution to the total increase of 2,0% (R1 497,3 million) was made by Western Cape (contributing 4,2 percentage points or R3 090,6 million). Gauteng (contributing -2,1 percentage points or -R1 522,3 million) was the largest negative contributor – see Table B.

Table C – Recorded building plans passed by larger municipalities at constant 2015 prices: January to August 2017 versus January to August 2018

Estimates at constant 2015 prices	January to August 2017	January to August 2018	Difference in value between January to August 2017 and January to August 2018	% change between January to August 2017 and January to August 2018
	1/	1/		
	R'000	R'000	R'000	
Residential buildings	32 898 431	34 055 350	1 156 919	3,5
Non-residential buildings	15 972 904	13 890 676	-2 082 228	-13,0
Additions and alterations	16 840 781	16 908 760	67 979	0,4
Total	65 712 116	64 854 786	-857 330	-1,3

1/ 2017 and 2018 figures should be regarded as preliminary because of possible backlogs and incomplete reporting by municipalities.

Real value of recorded building plans passed

The real value of recorded building plans passed (at constant 2015 prices) decreased by 1,3% (-R857,3 million) year-on-year during January to August 2018. A decrease was recorded for non-residential buildings (-13,0% or -R2 082,2 million). Increases were recorded for residential buildings (3,5% or R1 156,9 million) and additions and alterations (0,4% or R68,0 million) – see Table C.

Table D – Seasonally adjusted three-monthly key figures regarding recorded building plans passed by larger municipalities at constant 2015 prices

Seasonally adjusted estimates at constant 2015 prices	March to May 2018	June to August 2018	% change between March to May 2018 and June to August 2018
	R'000	R'000	
Residential buildings	12 529 327	13 491 077	7,7
Non-residential buildings 1/	4 421 005	5 539 619	25,3
Additions and alterations	6 524 485	6 239 359	-4,4
Total	23 474 817	25 270 055	7,6

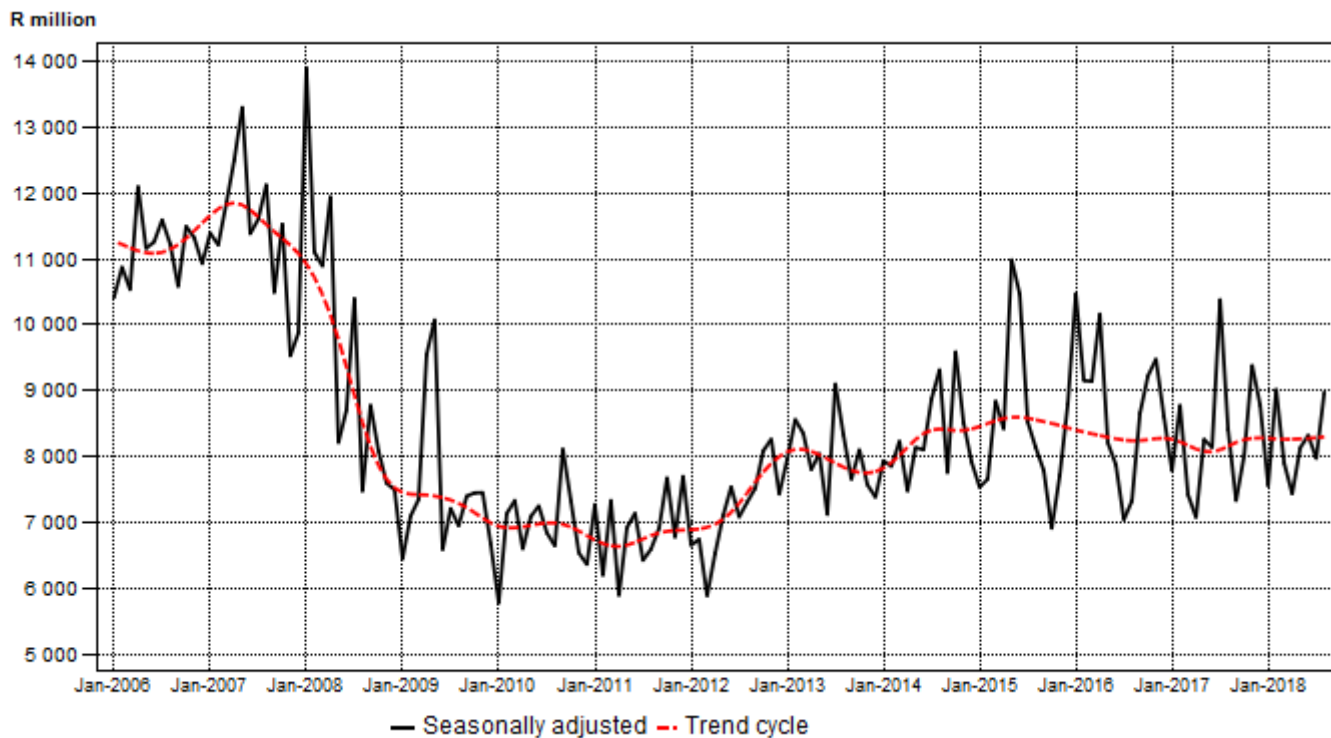
1/ Not seasonally adjusted because the presence of seasonality is not significant. See notes 10 and 11 on page 38.

Seasonally adjusted real value of recorded building plans passed

The seasonally adjusted real value of recorded building plans passed increased by 7,6% in the three months ended August 2018 compared with the three months ended May 2018. Increases were recorded for non-residential buildings (25,3%) and residential buildings (7,7%). A decrease was recorded for additions and alterations (-4,4%) – see Table D.

Figure 1 – Real value of recorded building plans passed by larger municipalities

Constant 2015 prices



**Table E – Buildings reported as completed to larger municipalities at current prices:
January to August 2017 versus January to August 2018**

Estimates at current prices	January to August 2017	January to August 2018	Difference in value between January to August 2017 and January to August 2018	% change between January to August 2017 and January to August 2018
	1/ R'000	1/ R'000	R'000	
Residential buildings	24 655 167	26 245 029	1 589 862	6,4
-Dwelling-houses	14 930 573	14 526 862	-403 711	-2,7
-Flats and townhouses	7 487 943	11 330 697	3 842 754	51,3
-Other residential buildings	2 236 651	387 470	-1 849 181	-82,7
Non-residential buildings	12 646 850	10 240 128	-2 406 722	-19,0
Additions and alterations	7 437 824	8 275 930	838 106	11,3
Total	44 739 841	44 761 087	21 246	0,0

1/ 2017 and 2018 figures should be regarded as preliminary because of possible backlogs and incomplete reporting by municipalities.

Total value of buildings reported as completed at current prices

The growth rate for buildings reported as completed (at current prices) was flat during January to August 2018 compared with January to August 2017.

A decrease was recorded for non-residential buildings (-19,0% or -R2 406,7 million). Increases were recorded for additions and alterations (11,3% or R838,1 million) and residential buildings (6,4% or R1 589,9 million) – see Table E.

**Table F – Buildings reported as completed to larger municipalities aggregated to provincial level:
January to August 2017 versus January to August 2018**

Estimates at current prices	January to August 2017	January to August 2018	% contribution to the total value of buildings completed during January to August 2017	% change between January to August 2017 and January to August 2018	Contribution (% points) to the % change in the value of buildings completed between January to August 2017 and January to August 2018	Difference in value between January to August 2017 and January to August 2018
	1/ R'000	1/ R'000				
Western Cape	13 181 388	13 186 309	29,5	0,0	0,0	4 921
Eastern Cape	1 226 905	1 587 498	2,7	29,4	0,8	360 593
Northern Cape	358 510	268 340	0,8	-25,2	-0,2	-90 170
Free State	648 391	792 788	1,4	22,3	0,3	144 397
KwaZulu-Natal	7 993 553	5 936 610	17,9	-25,7	-4,6	-2 056 943
North West	1 087 047	1 392 725	2,4	28,1	0,7	305 678
Gauteng	18 856 308	19 833 699	42,1	5,2	2,2	977 391
Mpumalanga	816 466	1 161 548	1,8	42,3	0,8	345 082
Limpopo	571 273	601 570	1,3	5,3	0,1	30 297
Total	44 739 841	44 761 087	100,0	0,0	0,0	21 246

1/ 2017 and 2018 figures should be regarded as preliminary because of possible backlogs and incomplete reporting by municipalities.

2/ The contribution (percentage points) is calculated by multiplying the percentage change of each province between January to August 2017 and January to August 2018 by the percentage contribution of the corresponding province to the total value of buildings completed during January to August 2017, divided by 100.

Two provinces reported year-on-year decreases in the value of buildings completed during January to August 2018. Negative contributions were recorded for KwaZulu-Natal (contributing -4,6 percentage points or -R2 056,9 million) and Northern Cape (contributing -0,2 of a percentage point or -R90,2 million). Gauteng (contributing 2,2 percentage points or R977,4 million) was the largest positive contributor – see Table F.

Table G – Buildings reported as completed to larger municipalities at constant 2015 prices: January to August 2017 versus January to August 2018

Estimates at constant 2015 prices	January to August 2017	January to August 2018	Difference in value between January to August 2017 and January to August 2018	% change between January to August 2017 and January to August 2018
	1/	1/		
	R'000	R'000	R'000	
Residential buildings	22 108 625	22 737 605	628 980	2,8
Non-residential buildings	11 334 999	8 875 517	-2 459 482	-21,7
Additions and alterations	6 666 415	7 170 409	503 994	7,6
Total	40 110 039	38 783 531	-1 326 508	-3,3

1/ 2017 and 2018 figures should be regarded as preliminary because of possible backlogs and incomplete reporting by municipalities.

Real value of buildings reported as completed

The real value of buildings reported as completed (at constant 2015 prices) decreased by 3,3% (-R1 326,5 million) year-on-year during January to August 2018. Non-residential buildings fell by 21,7% (-R2 459,5 million) – see Table G.

Table H – Seasonally adjusted three-monthly key figures regarding buildings reported as completed to larger municipalities at constant 2015 prices

Seasonally adjusted estimates at constant 2015 prices	March to May 2018	June to August 2018	% change between March to May 2018 and June to August 2018
	R'000	R'000	
Residential buildings	8 370 906	9 885 873	18,1
Non-residential buildings 1/	3 240 611	3 601 323	11,1
Additions and alterations	2 486 504	3 017 488	21,4
Total	14 098 021	16 504 684	17,1

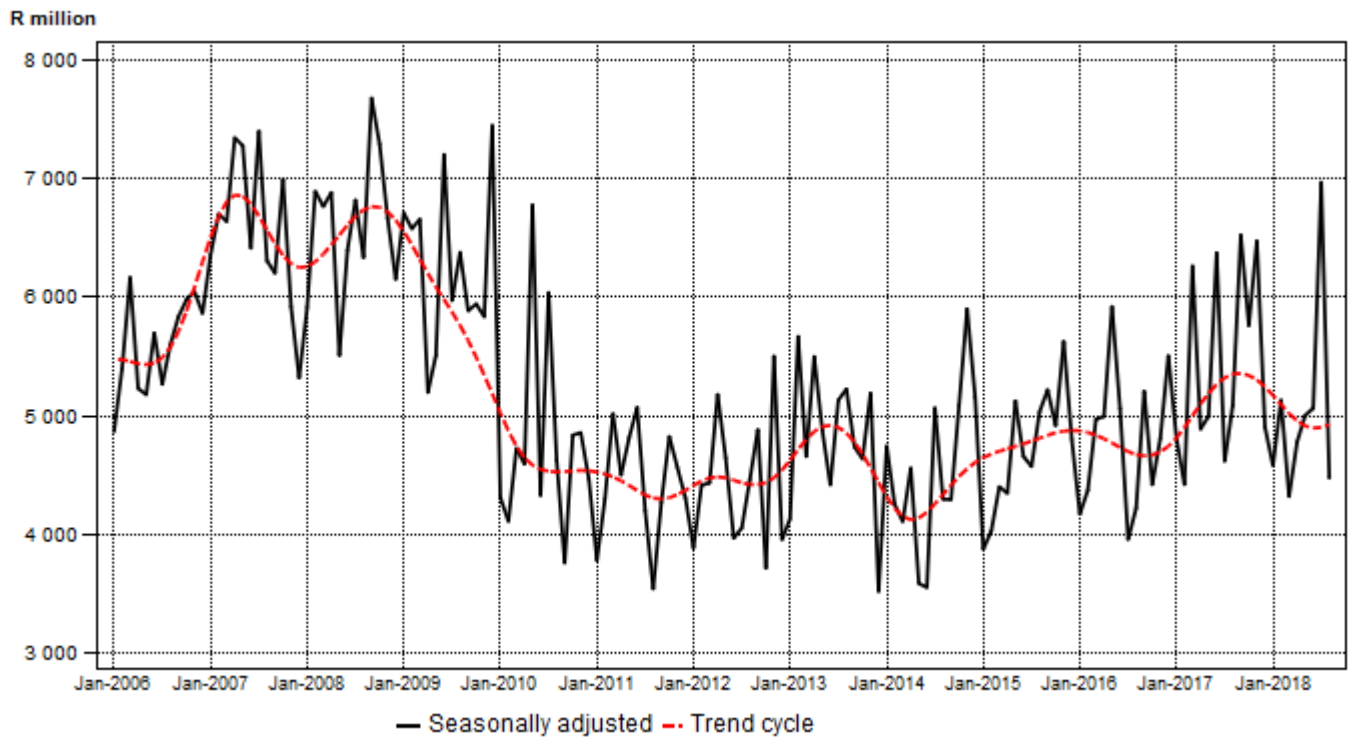
1/ Not seasonally adjusted because the presence of seasonality is not significant. See notes 10 and 11 on page 38.

Seasonally adjusted real value of buildings reported as completed

The seasonally adjusted real value of buildings reported as completed increased by 17,1% in the three months ended August 2018 compared with the three months ended May 2018. Increases were recorded for additions and alterations (21,4%), residential buildings (18,1%) and non-residential buildings (11,1%) – see Table H.

Figure 2 – Real value of buildings reported as completed to larger municipalities

Constant 2015 prices



**Risenga Maluleke
Statistician-General**

Table 1 – Value and percentage change of recorded building plans passed by larger municipalities at current prices by type of building

Year and month 2/		Residential buildings		Non-residential buildings		Additions and alterations		Total	
		R'000	% change 1/	R'000	% change 1/	R'000	% change 1/	R'000	% change 1/
2017	January	3 161 447	6,2	1 894 083	-58,3	1 703 058	17,3	6 758 588	-24,7
	February	4 539 426	-1,2	2 957 537	11,1	2 161 104	1,7	9 658 067	3,0
	March	4 726 354	2,7	1 675 826	-36,7	2 277 738	10,8	8 679 918	-6,7
	April	4 056 771	-26,0	1 002 693	-64,7	1 983 859	-16,9	7 043 323	-34,2
	May	4 647 680	10,4	2 420 751	7,5	2 442 934	9,0	9 511 365	9,3
	June	4 775 996	-5,0	2 192 921	40,6	2 642 793	9,4	9 611 710	6,8
	July	6 214 644	65,2	2 805 151	102,8	2 626 367	3,7	11 646 162	51,7
	August	4 586 063	3,7	2 874 162	60,0	2 958 451	29,1	10 418 676	22,4
	September	4 486 618	-6,6	1 498 229	-40,4	2 705 724	-0,1	8 690 571	-13,3
	October	5 302 305	-2,2	1 903 123	-26,5	2 993 633	10,2	10 199 061	-4,9
	November	4 585 400	-5,0	3 903 092	14,0	2 785 284	13,3	11 273 776	5,2
	December	4 230 596	-10,7	2 535 273	66,5	1 982 402	1,4	8 748 271	6,5
	Total	55 313 300	0,8	27 662 841	-7,0	29 263 347	7,0	112 239 488	0,3
2018	January	3 423 823	8,3	1 326 388	-30,0	2 048 834	20,3	6 799 045	0,6
	February	4 728 955	4,2	3 173 522	7,3	2 360 140	9,2	10 262 617	6,3
	March	4 324 029	-8,5	1 544 746	-7,8	2 547 968	11,9	8 416 743	-3,0
	April	4 593 385	13,2	1 718 431	71,4	2 162 953	9,0	8 474 769	20,3
	May	5 653 709	21,6	1 817 021	-24,9	2 476 180	1,4	9 946 910	4,6
	June	4 961 410	3,9	2 143 598	-2,2	2 702 425	2,3	9 807 433	2,0
	July	5 177 874	-16,7	1 765 016	-37,1	2 732 053	4,0	9 674 943	-16,9
	August	6 437 533	40,4	2 530 349	-12,0	2 474 740	-16,4	11 442 622	9,8

1/ The percentage change is the change in the value of recorded building plans passed by municipalities of the relevant year/month compared with the value of recorded building plans passed by municipalities of the comparable period of the previous year expressed as a percentage.

2/ Preliminary figures.

Table 2 – Seasonally adjusted value and percentage change of recorded building plans passed by larger municipalities at current prices by type of building

Year and month		Residential buildings		Non-residential buildings 3/		Additions and alterations		Total	
		R'000	% change 1/	R'000	% change 1/	R'000	% change 1/	R'000	% change 1/
2017	January	4 384 978	-22,3	1 894 083	24,4	2 304 203	-3,2	8 583 264	-10,1
	February	4 512 448	2,9	2 957 537	56,1	2 234 543	-3,0	9 704 528	13,1
	March	4 272 698	-5,3	1 675 826	-43,3	2 270 390	1,6	8 218 914	-15,3
	April	4 581 313	7,2	1 002 693	-40,2	2 329 248	2,6	7 913 254	-3,7
	May	4 453 638	-2,8	2 420 751	141,4	2 386 215	2,4	9 260 604	17,0
	June	4 436 250	-0,4	2 192 921	-9,4	2 491 589	4,4	9 120 760	-1,5
	July	6 376 304	43,7	2 805 151	27,9	2 432 686	-2,4	11 614 141	27,3
	August	4 006 458	-37,2	2 874 162	2,5	2 580 660	6,1	9 461 280	-18,5
	September	4 363 953	8,9	1 498 229	-47,9	2 435 882	-5,6	8 298 064	-12,3
	October	4 639 820	6,3	1 903 123	27,0	2 629 124	7,9	9 172 067	10,5
	November	4 283 871	-7,7	3 903 092	105,1	2 575 980	-2,0	10 762 943	17,3
	December	5 092 551	18,9	2 535 273	-35,0	2 507 411	-2,7	10 135 235	-5,8
2018	January	4 658 916	-8,5	1 326 388	-47,7	2 664 896	6,3	8 650 200	-14,7
	February	4 675 868	0,4	3 173 522	139,3	2 459 182	-7,7	10 308 572	19,2
	March	4 713 259	0,8	1 544 746	-51,3	2 912 400	18,4	9 170 405	-11,0
	April	4 560 313	-3,2	1 718 431	11,2	2 237 896	-23,2	8 516 640	-7,1
	May	5 137 207	12,7	1 817 021	5,7	2 407 362	7,6	9 361 590	9,9
	June	4 837 882	-5,8	2 143 598	18,0	2 618 685	8,8	9 600 165	2,5
	July	5 154 922	6,6	1 765 016	-17,7	2 400 506	-8,3	9 320 444	-2,9
	August	5 709 753	10,8	2 530 349	43,4	2 200 620	-8,3	10 440 722	12,0
	Mar. – May 18	14 410 779		5 080 198		7 557 658		27 048 635	
	Jun. – Aug. 18 2/	15 702 557	9,0	6 438 963	26,7	7 219 811	-4,5	29 361 331	8,6

1/ The percentage change is the change in the seasonally adjusted value of recorded building plans passed by municipalities of the relevant month compared with the seasonally adjusted value of recorded building plans passed by municipalities of the previous month expressed as a percentage.

2/ The percentage change is the change in the seasonally adjusted value of recorded building plans passed by municipalities for the latest three months compared with the seasonally adjusted value of recorded building plans passed by municipalities of the previous three months expressed as a percentage.

3/ Not seasonally adjusted because the presence of seasonality is not significant. See notes 10 and 11 on page 38.

Table 3 – Value and percentage change of recorded building plans passed by larger municipalities at constant 2015 prices by type of building

Year and month 2/		Residential buildings		Non-residential buildings		Additions and alterations		Total	
		R'000	% change 1/	R'000	% change 1/	R'000	% change 1/	R'000	% change 1/
2017	January	2 874 043	-1,3	1 721 894	-61,3	1 548 235	9,0	6 144 172	-30,0
	February	4 096 955	-7,0	2 669 257	4,5	1 950 455	-4,3	8 716 667	-3,1
	March	4 254 144	-3,3	1 508 394	-40,4	2 050 169	4,3	7 812 707	-12,2
	April	3 644 898	-30,0	900 892	-66,5	1 782 443	-21,3	6 328 233	-37,7
	May	4 138 629	3,9	2 155 611	1,1	2 175 364	2,6	8 469 604	2,9
	June	4 268 093	-9,3	1 959 715	34,2	2 361 745	4,4	8 589 553	1,9
	July	5 548 789	58,0	2 504 599	93,9	2 344 971	-0,8	10 398 359	45,0
	August	4 072 880	-1,3	2 552 542	52,3	2 627 399	22,9	9 252 821	16,5
	September	3 956 453	-11,4	1 321 190	-43,5	2 386 000	-5,3	7 663 643	-17,8
	October	4 642 999	-7,7	1 666 482	-30,6	2 621 395	4,0	8 930 876	-10,2
	November	3 990 775	-10,1	3 396 947	7,8	2 424 094	7,2	9 811 816	-0,4
	December	3 678 779	-14,9	2 204 585	58,7	1 723 828	-3,3	7 607 192	1,5
	Total	49 167 437	-4,5	24 562 108	-12,5	25 996 098	1,3	99 725 643	-5,2
2018	January	2 990 238	4,0	1 158 417	-32,7	1 789 375	15,6	5 938 030	-3,4
	February	4 130 092	0,8	2 771 635	3,8	2 061 258	5,7	8 962 985	2,8
	March	3 769 860	-11,4	1 346 771	-10,7	2 221 419	8,4	7 338 050	-6,1
	April	3 997 724	9,7	1 495 588	66,0	1 882 466	5,6	7 375 778	16,6
	May	4 911 997	18,7	1 578 646	-26,8	2 151 329	-1,1	8 641 972	2,0
	June	4 295 593	0,6	1 855 929	-5,3	2 339 762	-0,9	8 491 284	-1,1
	July	4 429 319	-20,2	1 509 851	-39,7	2 337 086	-0,3	8 276 256	-20,4
	August	5 530 527	35,8	2 173 839	-14,8	2 126 065	-19,1	9 830 431	6,2

1/ The percentage change is the change in the value of recorded building plans passed by municipalities of the relevant year/month compared with the value of recorded building plans passed by municipalities of the comparable period of the previous year expressed as a percentage.

2/ Preliminary figures.

Table 4 – Seasonally adjusted value and percentage change of recorded building plans passed by larger municipalities at constant 2015 prices by type of building

Year and month		Residential buildings		Non-residential buildings 3/		Additions and alterations		Total	
		R'000	% change 1/	R'000	% change 1/	R'000	% change 1/	R'000	% change 1/
2017	January	3 976 123	-21,0	1 721 894	24,0	2 091 260	-4,4	7 789 277	-9,5
	February	4 087 403	2,8	2 669 257	55,0	2 021 599	-3,3	8 778 259	12,7
	March	3 888 067	-4,9	1 508 394	-43,5	2 027 378	0,3	7 423 839	-15,4
	April	4 121 024	6,0	900 892	-40,3	2 059 102	1,6	7 081 018	-4,6
	May	3 985 865	-3,3	2 155 611	139,3	2 122 055	3,1	8 263 531	16,7
	June	3 936 785	-1,2	1 959 715	-9,1	2 245 507	5,8	8 142 007	-1,5
	July	5 692 772	44,6	2 504 599	27,8	2 181 345	-2,9	10 378 716	27,5
	August	3 541 041	-37,8	2 552 542	1,9	2 316 900	6,2	8 410 483	-19,0
	September	3 862 969	9,1	1 321 190	-48,2	2 153 261	-7,1	7 337 420	-12,8
	October	4 066 005	5,3	1 666 482	26,1	2 278 188	5,8	8 010 675	9,2
	November	3 726 136	-8,4	3 396 947	103,8	2 259 750	-0,8	9 382 833	17,1
	December	4 380 277	17,6	2 204 585	-35,1	2 195 369	-2,8	8 780 231	-6,4
2018	January	4 087 652	-6,7	1 158 417	-47,5	2 315 511	5,5	7 561 580	-13,9
	February	4 099 996	0,3	2 771 635	139,3	2 147 014	-7,3	9 018 645	19,3
	March	4 076 494	-0,6	1 346 771	-51,4	2 477 266	15,4	7 900 531	-12,4
	April	3 996 207	-2,0	1 495 588	11,0	1 947 605	-21,4	7 439 400	-5,8
	May	4 456 626	11,5	1 578 646	5,6	2 099 614	7,8	8 134 886	9,3
	June	4 206 905	-5,6	1 855 929	17,6	2 260 494	7,7	8 323 328	2,3
	July	4 408 254	4,8	1 509 851	-18,6	2 058 020	-9,0	7 976 125	-4,2
	August	4 875 918	10,6	2 173 839	44,0	1 920 845	-6,7	8 970 602	12,5
	Mar. – May 18	12 529 327		4 421 005		6 524 485		23 474 817	
	Jun. – Aug. 18 2/	13 491 077	7,7	5 539 619	25,3	6 239 359	-4,4	25 270 055	7,6

1/ The percentage change is the change in the seasonally adjusted value of recorded building plans passed by municipalities of the relevant month compared with the seasonally adjusted value of recorded building plans passed by municipalities of the previous month expressed as a percentage.

2/ The percentage change is the change in the seasonally adjusted value of recorded building plans passed by municipalities for the latest three months compared with the seasonally adjusted value of recorded building plans passed by municipalities of the previous three months expressed as a percentage.

3/ Not seasonally adjusted because the presence of seasonality is not significant. See notes 10 and 11 on page 38.

Table 5 – Value and percentage change of buildings reported as completed to larger municipalities at current prices by type of building

Year and month 2/		Residential buildings		Non-residential buildings		Additions and alterations		Total	
		R'000	% change 1/	R'000	% change 1/	R'000	% change 1/	R'000	% change 1/
2017	January	2 359 273	6,8	1 324 149	128,9	755 314	16,0	4 438 736	29,1
	February	2 987 483	21,5	793 718	-22,9	839 781	-3,5	4 620 982	6,0
	March	3 590 701	42,3	2 469 283	36,4	1 096 654	24,9	7 156 638	37,3
	April	3 722 887	60,7	835 924	-60,4	688 546	-16,3	5 247 357	-0,1
	May	2 997 231	-8,5	1 458 694	-19,8	938 447	2,7	5 394 372	-10,2
	June	3 184 349	2,5	2 807 943	111,9	1 119 285	20,3	7 111 577	32,7
	July	2 791 841	19,3	1 418 931	23,3	878 502	24,5	5 089 274	21,3
	August	3 021 402	20,3	1 538 208	27,6	1 121 295	41,6	5 680 905	26,0
	September	3 017 108	-17,3	3 501 830	164,1	1 234 363	25,5	7 753 301	30,1
	October	3 332 642	9,2	2 668 765	187,5	831 585	-18,6	6 832 992	36,6
	November	3 663 759	21,0	3 257 545	93,7	1 141 897	9,7	8 063 201	40,2
	December	4 159 930	-7,9	863 246	-12,4	958 305	9,8	5 981 481	-6,2
	Total	38 828 606	11,0	22 938 236	43,8	11 603 974	10,7	73 370 816	19,5
2018	January	2 685 943	13,8	807 034	-39,1	792 693	4,9	4 285 670	-3,4
	February	2 996 399	0,3	1 521 419	91,7	1 053 541	25,5	5 571 359	20,6
	March	2 823 654	-21,4	1 044 722	-57,7	1 068 288	-2,6	4 936 664	-31,0
	April	3 373 893	-9,4	1 205 988	44,3	890 508	29,3	5 470 389	4,3
	May	3 191 090	6,5	1 473 491	1,0	903 658	-3,7	5 568 239	3,2
	June	3 381 928	6,2	1 478 214	-47,4	1 020 156	-8,9	5 880 298	-17,3
	July	4 918 774	76,2	1 649 068	16,2	1 362 088	55,0	7 929 930	55,8
	August	2 873 348	-4,9	1 060 192	-31,1	1 184 998	5,7	5 118 538	-9,9

1/ The percentage change is the change in the value of buildings reported as completed to municipalities of the relevant year/month compared with the value of buildings reported as completed to municipalities of the comparable period of the previous year expressed as a percentage.

2/ Preliminary figures.

Table 6 – Seasonally adjusted value and percentage change of buildings reported as completed to larger municipalities at current prices by type of building

Year and month		Residential buildings		Non-residential buildings 3/		Additions and alterations		Total	
		R'000	% change 1/	R'000	% change 1/	R'000	% change 1/	R'000	% change 1/
2017	January	3 019 097	-26,2	1 324 149	34,4	960 168	-3,8	5 303 414	-12,7
	February	3 282 074	8,7	793 718	-40,1	814 972	-15,1	4 890 764	-7,8
	March	3 645 084	11,1	2 469 283	211,1	831 578	2,0	6 945 945	42,0
	April	3 722 440	2,1	835 924	-66,1	860 384	3,5	5 418 748	-22,0
	May	3 180 043	-14,6	1 458 694	74,5	968 353	12,5	5 607 090	3,5
	June	3 237 211	1,8	2 807 943	92,5	1 079 156	11,4	7 124 310	27,1
	July	2 835 946	-12,4	1 418 931	-49,5	908 642	-15,8	5 163 519	-27,5
	August	3 135 868	10,6	1 538 208	8,4	1 052 618	15,8	5 726 694	10,9
	September	2 764 195	-11,9	3 501 830	127,7	1 129 875	7,3	7 395 900	29,1
	October	3 111 032	12,5	2 668 765	-23,8	796 846	-29,5	6 576 643	-11,1
	November	3 114 653	0,1	3 257 545	22,1	1 068 444	34,1	7 440 642	13,1
	December	3 739 235	20,1	863 246	-73,5	1 075 586	0,7	5 678 067	-23,7
2018	January	3 433 918	-8,2	807 034	-6,5	1 010 271	-6,1	5 251 223	-7,5
	February	3 306 992	-3,7	1 521 419	88,5	1 039 871	2,9	5 868 282	11,8
	March	2 877 169	-13,0	1 044 722	-31,3	1 028 020	-1,1	4 949 911	-15,6
	April	3 367 086	17,0	1 205 988	15,4	895 754	-12,9	5 468 828	10,5
	May	3 348 984	-0,5	1 473 491	22,2	931 016	3,9	5 753 491	5,2
	June	3 391 430	1,3	1 478 214	0,3	971 488	4,3	5 841 132	1,5
	July	5 069 966	49,5	1 649 068	11,6	1 416 673	45,8	8 135 707	39,3
	August	3 029 887	-40,2	1 060 192	-35,7	1 120 103	-20,9	5 210 182	-36,0
	Mar. – May 18	9 593 239		3 724 201		2 854 790		16 172 230	
	Jun. – Aug. 18 2/	11 491 283	19,8	4 187 474	12,4	3 508 264	22,9	19 187 021	18,6

1/ The percentage change is the change in the seasonally adjusted value of buildings reported as completed to municipalities of the relevant month compared with the seasonally adjusted value of buildings reported as completed to municipalities of the previous month expressed as a percentage.

2/ The percentage change is the change in the seasonally adjusted value of buildings reported as completed to municipalities for the latest three months compared with the seasonally adjusted value of buildings reported as completed to municipalities of the previous three months expressed as a percentage.

3/ Not seasonally adjusted because the presence of seasonality is not significant. See notes 10 and 11 on page 38.

Table 7 – Value and percentage change of buildings reported as completed to larger municipalities at constant 2015 prices by type of building

Year and month 2/		Residential buildings		Non-residential buildings		Additions and alterations		Total	
		R'000	% change 1/	R'000	% change 1/	R'000	% change 1/	R'000	% change 1/
2017	January	2 144 794	-0,7	1 203 772	112,7	686 649	7,7	4 035 215	19,9
	February	2 696 284	14,4	716 352	-27,5	757 925	-9,1	4 170 561	-0,2
	March	3 231 954	34,0	2 222 577	28,4	987 087	17,6	6 441 618	29,3
	April	3 344 912	52,2	751 055	-62,5	618 640	-20,7	4 714 607	-5,4
	May	2 668 950	-13,9	1 298 926	-24,5	835 661	-3,3	4 803 537	-15,5
	June	2 845 710	-2,1	2 509 332	102,2	1 000 255	14,9	6 355 297	26,6
	July	2 492 715	14,1	1 266 903	17,9	784 377	19,1	4 543 995	16,0
	August	2 683 306	14,5	1 366 082	21,4	995 821	34,8	5 045 209	20,0
	September	2 660 589	-21,6	3 088 034	150,3	1 088 504	18,9	6 837 127	23,4
	October	2 918 250	3,1	2 336 922	171,4	728 183	-23,2	5 983 355	29,0
	November	3 188 650	14,5	2 835 113	83,2	993 818	3,8	7 017 581	32,7
	December	3 617 330	-12,2	750 649	-16,5	833 309	4,6	5 201 288	-10,6
	Total	34 493 444	5,2	20 345 717	35,7	10 310 229	4,8	65 149 390	13,1
2018	January	2 345 802	9,4	704 833	-41,4	692 308	0,8	3 742 943	-7,2
	February	2 616 942	-2,9	1 328 750	85,5	920 123	21,4	4 865 815	16,7
	March	2 461 773	-23,8	910 830	-59,0	931 376	-5,6	4 303 979	-33,2
	April	2 936 373	-12,2	1 049 598	39,7	775 029	25,3	4 761 000	1,0
	May	2 772 450	3,9	1 280 183	-1,4	785 107	-6,0	4 837 740	0,7
	June	2 928 076	2,9	1 279 839	-49,0	883 252	-11,7	5 091 167	-19,9
	July	4 207 677	68,8	1 410 666	11,3	1 165 174	48,5	6 783 517	49,3
	August	2 468 512	-8,0	910 818	-33,3	1 018 040	2,2	4 397 370	-12,8

1/ The percentage change is the change in the value of buildings reported as completed to municipalities of the relevant year/month compared with the value of buildings reported as completed to municipalities of the comparable period of the previous year expressed as a percentage.

2/ Preliminary figures.

Table 8 – Seasonally adjusted value and percentage change of buildings reported as completed to larger municipalities at constant 2015 prices by type of building

Year and month		Residential buildings		Non-residential buildings 3/		Additions and alterations		Total	
		R'000	% change 1/	R'000	% change 1/	R'000	% change 1/	R'000	% change 1/
2017	January	2 739 963	-25,9	1 203 772	33,9	870 123	-4,2	4 813 858	-12,5
	February	2 966 289	8,3	716 352	-40,5	737 305	-15,3	4 419 946	-8,2
	March	3 289 550	10,9	2 222 577	210,3	750 143	1,7	6 262 270	41,7
	April	3 362 616	2,2	751 055	-66,2	772 399	3,0	4 886 070	-22,0
	May	2 832 284	-15,8	1 298 926	72,9	863 189	11,8	4 994 399	2,2
	June	2 896 616	2,3	2 509 332	93,2	965 997	11,9	6 371 945	27,6
	July	2 536 014	-12,4	1 266 903	-49,5	812 821	-15,9	4 615 738	-27,6
	August	2 785 548	9,8	1 366 082	7,8	934 651	15,0	5 086 281	10,2
	September	2 437 979	-12,5	3 088 034	126,1	996 686	6,6	6 522 699	28,2
	October	2 726 685	11,8	2 336 922	-24,3	695 171	-30,3	5 758 778	-11,7
	November	2 708 605	-0,7	2 835 113	21,3	929 563	33,7	6 473 281	12,4
	December	3 219 352	18,9	750 649	-73,5	933 573	0,4	4 903 574	-24,2
2018	January	2 994 444	-7,0	704 833	-6,1	879 807	-5,8	4 579 084	-6,6
	February	2 892 344	-3,4	1 328 750	88,5	910 682	3,5	5 131 776	12,1
	March	2 513 753	-13,1	910 830	-31,5	894 956	-1,7	4 319 539	-15,8
	April	2 946 597	17,2	1 049 598	15,2	781 700	-12,7	4 777 895	10,6
	May	2 910 556	-1,2	1 280 183	22,0	809 848	3,6	5 000 587	4,7
	June	2 940 690	1,0	1 279 839	0,0	842 123	4,0	5 062 652	1,2
	July	4 342 352	47,7	1 410 666	10,2	1 213 680	44,1	6 966 698	37,6
	August	2 602 831	-40,1	910 818	-35,4	961 685	-20,8	4 475 334	-35,8
	Mar. – May 18	8 370 906		3 240 611		2 486 504		14 098 021	
	Jun. – Aug. 18 2/	9 885 873	18,1	3 601 323	11,1	3 017 488	21,4	16 504 684	17,1

1/ The percentage change is the change in the seasonally adjusted value of buildings reported as completed to municipalities of the relevant month compared with the seasonally adjusted value of buildings reported as completed to municipalities of the previous month expressed as a percentage.

2/ The percentage change is the change in the seasonally adjusted value of buildings reported as completed to municipalities for the latest three months compared with the seasonally adjusted value of buildings reported as completed to municipalities of the previous three months expressed as a percentage.

3/ Not seasonally adjusted because the presence of seasonality is not significant. See notes 10 and 11 on page 38.

Table 9 – Recorded building plans passed by larger municipalities at current prices by type of building: South Africa

			Aug. 2017	Jul. 2018	Aug. 2018	Jan. - Aug. 2017	Jan. - Aug. 2018	% change 1/
Category of building	Type of building	Measuring unit						
Residential buildings	Dwelling-houses < 80 square metres	Number	1 205	1 699	1 287	12 879	12 826	-0,4
		square metres	59 369	83 540	60 000	613 628	603 833	-1,6
		R'000	284 299	452 751	355 336	2 986 869	3 274 145	9,6
	Dwelling-houses >= 80 square metres	Number	1 426	1 380	1 370	10 100	10 005	-0,9
		square metres	388 149	401 438	366 359	2 738 124	2 661 794	-2,8
		R'000	2 732 034	2 887 154	2 668 201	18 997 776	19 108 675	0,6
	Flats and townhouses	Number	1 201	2 853	2 721	14 406	18 649	29,5
		square metres	193 377	226 736	370 538	1 817 208	1 930 207	6,2
		R'000	1 488 144	1 765 618	3 354 208	14 341 749	15 440 357	7,7
	Other residential buildings 2/	square metres	10 892	6 661	6 856	53 170	144 362	171,5
		R'000	81 586	72 351	59 788	381 987	1 477 541	286,8
	Total residential buildings	R'000	4 586 063	5 177 874	6 437 533	36 708 381	39 300 718	7,1
Non-residential buildings	Office and banking space	square metres	24 514	35 544	10 428	463 230	323 449	-30,2
		R'000	261 157	266 228	77 963	4 275 571	2 938 953	-31,3
	Shopping space	square metres	66 198	64 732	56 938	440 142	404 637	-8,1
		R'000	495 031	517 433	541 203	3 669 707	3 300 866	-10,1
	Industrial and warehouse space	square metres	296 792	107 474	249 055	1 272 459	1 243 187	-2,3
		R'000	1 810 877	654 097	1 587 501	7 455 907	7 555 022	1,3
	Other non-residential buildings 3/	square metres	46 731	45 434	48 424	345 559	309 561	-10,4
		R'000	307 097	327 258	323 682	2 421 939	2 224 230	-8,2
	Total non-residential buildings	R'000	2 874 162	1 765 016	2 530 349	17 823 124	16 019 071	-10,1
	Additions and alterations	Dwelling-houses	square metres	275 605	258 464	229 469	1 952 448	1 890 349
R'000			1 992 378	1 898 566	1 697 134	13 651 561	13 694 865	0,3
Other buildings 4/		square metres	94 025	81 460	71 348	523 325	622 812	19,0
		R'000	966 073	833 487	777 606	5 144 743	5 810 428	12,9
Total additions and alterations	R'000	2 958 451	2 732 053	2 474 740	18 796 304	19 505 293	3,8	
Recorded plans passed	Total at current prices	R'000	10 418 676	9 674 943	11 442 622	73 327 809	74 825 082	2,0

1/ The percentage change between cumulative figures for 2017 and 2018.

2/ Other residential buildings include institutions for the disabled, boarding houses, hostels and tourism accommodation e.g. hotels, motels, guest-houses, holiday chalets, bed-and-breakfast accommodation and casinos.

3/ Other non-residential space includes churches, sport and recreation clubs, schools, crèches, hospitals and all other non-residential space.

4/ Other buildings include other residential buildings, non-residential buildings and internal alterations. No square metres are collected for internal alterations.

Table 10 – Recorded building plans passed by larger municipalities at current prices by type of building: Western Cape

			Aug. 2017	Jul. 2018	Aug. 2018	Jan. - Aug. 2017	Jan. - Aug. 2018	% change 1/
Category of building	Type of building	Measuring unit						
Residential buildings	Dwelling-houses < 80 square metres	Number	268	320	542	4 645	4 629	-0,3
		square metres	11 277	15 793	25 153	214 574	206 392	-3,8
		R'000	72 030	88 232	151 796	1 290 801	1 210 858	-6,2
	Dwelling-houses >= 80 square metres	Number	499	495	508	3 394	3 558	4,8
		square metres	119 687	124 540	116 841	812 906	860 593	5,9
		R'000	799 133	822 166	746 905	5 462 035	5 761 596	5,5
	Flats and townhouses	Number	195	1 103	257	4 655	7 794	67,4
		square metres	32 359	94 202	36 848	490 829	759 794	54,8
		R'000	254 800	758 831	285 541	3 728 715	5 737 961	53,9
	Other residential buildings 2/	square metres	3 139	0	0	11 639	23 470	101,6
		R'000	25 392	0	0	82 310	181 605	120,6
	Total residential buildings	R'000	1 151 355	1 669 229	1 184 242	10 563 861	12 892 020	22,0
	Non-residential buildings	Office and banking space	square metres	2 567	20 640	0	108 639	70 060
R'000			19 273	177 810	0	955 052	556 527	-41,7
Shopping space		square metres	1 391	17 549	2 244	62 003	101 930	64,4
		R'000	9 042	144 602	17 020	491 870	820 891	66,9
Industrial and warehouse space		square metres	31 655	15 489	66 672	187 461	285 095	52,1
		R'000	214 700	95 591	448 922	1 313 959	1 918 151	46,0
Other non-residential buildings 3/		square metres	14 403	18 052	27 721	113 876	133 316	17,1
		R'000	94 259	117 564	210 163	751 124	955 204	27,2
Total non-residential buildings		R'000	337 274	535 567	676 105	3 512 005	4 250 773	21,0
Additions and alterations		Dwelling-houses	square metres	83 712	69 887	70 932	566 477	552 477
	R'000		549 107	454 324	464 568	3 708 555	3 704 494	-0,1
	Other buildings 4/	square metres	39 887	33 549	32 425	179 544	197 600	10,1
		R'000	358 648	311 280	307 333	1 938 357	1 966 055	1,4
Total additions and alterations	R'000	907 755	765 604	771 901	5 646 912	5 670 549	0,4	
Recorded plans passed	Total at current prices	R'000	2 396 384	2 970 400	2 632 248	19 722 778	22 813 342	15,7

1/ The percentage change between cumulative figures for 2017 and 2018.

2/ Other residential buildings include institutions for the disabled, boarding houses, hostels and tourism accommodation e.g. hotels, motels, guest-houses, holiday chalets, bed-and-breakfast accommodation and casinos.

3/ Other non-residential space includes churches, sport and recreation clubs, schools, crèches, hospitals and all other non-residential space.

4/ Other buildings include other residential buildings, non-residential buildings and internal alterations. No square metres are collected for internal alterations.

Table 11 – Recorded building plans passed by larger municipalities at current prices by type of building: Eastern Cape

			Aug. 2017	Jul. 2018	Aug. 2018	Jan. - Aug. 2017	Jan. - Aug. 2018	% change 1/
Category of building	Type of building	Measuring unit						
Residential buildings	Dwelling-houses < 80 square metres	Number	189	10	21	1 456	1 001	-31,3
		square metres	8 331	627	1 167	66 964	46 267	-30,9
		R'000	31 181	4 079	7 430	325 890	288 293	-11,5
	Dwelling-houses >= 80 square metres	Number	186	129	79	869	877	0,9
		square metres	42 967	26 023	20 688	211 226	187 475	-11,2
		R'000	275 931	171 672	138 688	1 296 507	1 204 186	-7,1
	Flats and townhouses	Number	20	5	41	279	1 109	297,5
		square metres	3 841	611	5 120	34 349	72 376	110,7
		R'000	24 383	4 045	34 304	201 461	453 052	124,9
	Other residential buildings 2/	square metres	0	0	492	6 210	2 066	-66,7
		R'000	0	0	3 313	36 924	11 726	-68,2
Total residential buildings	R'000	331 495	179 796	183 735	1 860 782	1 957 257	5,2	
Non-residential buildings	Office and banking space	square metres	1 109	1 228	2 897	9 568	28 783	200,8
		R'000	7 339	8 131	19 700	54 222	181 989	235,6
	Shopping space	square metres	0	2 224	0	15 684	6 650	-57,6
		R'000	0	14 585	0	87 501	40 461	-53,8
	Industrial and warehouse space	square metres	23 198	6 446	5 604	124 055	86 683	-30,1
		R'000	158 158	40 547	36 236	740 102	489 965	-33,8
	Other non-residential buildings 3/	square metres	3 950	2 330	1 114	18 642	18 207	-2,3
		R'000	25 102	15 427	5 601	103 701	99 681	-3,9
	Total non-residential buildings	R'000	190 599	78 690	61 537	985 526	812 096	-17,6
	Additions and alterations	Dwelling-houses	square metres	27 852	24 950	21 961	194 022	198 002
R'000			174 163	159 271	138 771	1 179 113	1 223 471	3,8
Other buildings 4/		square metres	14 487	11 942	8 722	45 464	90 089	98,2
		R'000	104 497	83 036	60 373	305 495	535 973	75,4
Total additions and alterations	R'000	278 660	242 307	199 144	1 484 608	1 759 444	18,5	
Recorded plans passed	Total at current prices	R'000	800 754	500 793	444 416	4 330 916	4 528 797	4,6

1/ The percentage change between cumulative figures for 2017 and 2018.

2/ Other residential buildings include institutions for the disabled, boarding houses, hostels and tourism accommodation e.g. hotels, motels, guest-houses, holiday chalets, bed-and-breakfast accommodation and casinos.

3/ Other non-residential space includes churches, sport and recreation clubs, schools, crèches, hospitals and all other non-residential space.

4/ Other buildings include other residential buildings, non-residential buildings and internal alterations. No square metres are collected for internal alterations.

Table 12 – Recorded building plans passed by larger municipalities at current prices by type of building: Northern Cape

			Aug. 2017	Jul. 2018	Aug. 2018	Jan. - Aug. 2017	Jan. - Aug. 2018	% change 1/
Category of building	Type of building	Measuring unit						
Residential buildings	Dwelling-houses < 80 square metres	Number	2	3	3	22	14	-36,4
		square metres	137	187	186	1 274	796	-37,5
		R'000	1 023	1 520	1 496	6 745	6 417	-4,9
	Dwelling-houses >= 80 square metres	Number	16	15	7	115	104	-9,6
		square metres	4 908	3 652	1 649	25 991	20 237	-22,1
		R'000	35 793	26 113	11 396	180 017	137 608	-23,6
	Flats and townhouses	Number	0	2	8	0	38	..
		square metres	0	303	810	0	3 430	..
		R'000	0	2 541	6 075	0	25 004	..
	Other residential buildings 2/	square metres	0	0	0	780	1 705	118,6
		R'000	0	0	0	5 070	11 935	135,4
	Total residential buildings	R'000	36 816	30 174	18 967	191 832	180 964	-5,7
Non-residential buildings	Office and banking space	square metres	600	0	0	1 017	8 087	695,2
		R'000	2 857	0	0	4 734	65 028	1 273,6
	Shopping space	square metres	1 200	0	5 632	6 056	9 288	53,4
		R'000	8 400	0	42 240	39 964	71 638	79,3
	Industrial and warehouse space	square metres	0	1 771	2 064	10 510	11 231	6,9
		R'000	0	13 283	15 480	71 988	77 151	7,2
	Other non-residential buildings 3/	square metres	89	0	0	992	2 199	121,7
		R'000	623	0	0	6 067	17 682	191,4
	Total non-residential buildings	R'000	11 880	13 283	57 720	122 753	231 499	88,6
	Additions and alterations	Dwelling-houses	square metres	3 185	3 636	3 104	23 930	27 135
R'000			23 980	26 511	23 084	167 907	196 910	17,3
Other buildings 4/		square metres	70	0	2 041	2 382	10 917	358,3
		R'000	1 553	1 235	15 688	20 720	88 675	328,0
Total additions and alterations	R'000	25 533	27 746	38 772	188 627	285 585	51,4	
Recorded plans passed	Total at current prices	R'000	74 229	71 203	115 459	503 212	698 048	38,7

1/ The percentage change between cumulative figures for 2017 and 2018.

2/ Other residential buildings include institutions for the disabled, boarding houses, hostels and tourism accommodation e.g. hotels, motels, guest-houses, holiday chalets, bed-and-breakfast accommodation and casinos.

3/ Other non-residential space includes churches, sport and recreation clubs, schools, crèches, hospitals and all other non-residential space.

4/ Other buildings include other residential buildings, non-residential buildings and internal alterations. No square metres are collected for internal alterations.

Table 13 – Recorded building plans passed by larger municipalities at current prices by type of building: Free State

			Aug. 2017	Jul. 2018	Aug. 2018	Jan. - Aug. 2017	Jan. - Aug. 2018	% change 1/
Category of building	Type of building	Measuring unit						
Residential buildings	Dwelling-houses < 80 square metres	Number	7	23	6	77	132	71,4
		square metres	409	1 351	337	4 564	7 403	62,2
		R'000	2 455	8 907	2 338	27 550	46 743	69,7
	Dwelling-houses >= 80 square metres	Number	58	76	44	457	458	0,2
		square metres	15 600	13 985	9 047	99 138	97 075	-2,1
		R'000	101 715	87 079	54 916	566 339	603 510	6,6
	Flats and townhouses	Number	4	12	21	579	320	-44,7
		square metres	470	538	1 954	69 498	24 029	-65,4
		R'000	2 984	3 984	12 350	475 376	168 936	-64,5
	Other residential buildings 2/	square metres	0	260	1 622	1 377	12 932	839,1
		R'000	0	1 238	8 372	7 362	83 263	1 031,0
	Total residential buildings	R'000	107 154	101 208	77 976	1 076 627	902 452	-16,2
Non-residential buildings	Office and banking space	square metres	0	2 935	378	4 862	5 167	6,3
		R'000	0	18 009	2 419	38 896	33 925	-12,8
	Shopping space	square metres	0	12 418	0	5 893	30 441	416,6
		R'000	0	76 278	0	32 010	199 908	524,5
	Industrial and warehouse space	square metres	7 476	5 109	15 220	33 399	63 775	90,9
		R'000	48 158	37 837	94 889	176 996	429 120	142,4
	Other non-residential buildings 3/	square metres	1 880	385	0	10 114	6 630	-34,4
		R'000	13 877	1 833	0	66 817	40 768	-39,0
	Total non-residential buildings	R'000	62 035	133 957	97 308	314 719	703 721	123,6
	Additions and alterations	Dwelling-houses	square metres	11 024	12 206	8 147	89 519	86 400
R'000			66 901	76 755	50 967	496 697	554 174	11,6
Other buildings 4/		square metres	6 538	7 136	143	22 684	54 352	139,6
		R'000	135 960	69 496	17 456	336 087	476 144	41,7
Total additions and alterations	R'000	202 861	146 251	68 423	832 784	1 030 318	23,7	
Recorded plans passed	Total at current prices	R'000	372 050	381 416	243 707	2 224 130	2 636 491	18,5

1/ The percentage change between cumulative figures for 2017 and 2018.

2/ Other residential buildings include institutions for the disabled, boarding houses, hostels and tourism accommodation e.g. hotels, motels, guest-houses, holiday chalets, bed-and-breakfast accommodation and casinos.

3/ Other non-residential space includes churches, sport and recreation clubs, schools, crèches, hospitals and all other non-residential space.

4/ Other buildings include other residential buildings, non-residential buildings and internal alterations. No square metres are collected for internal alterations.

Table 14 – Recorded building plans passed by larger municipalities at current prices by type of building: KwaZulu-Natal

			Aug. 2017	Jul. 2018	Aug. 2018	Jan. - Aug. 2017	Jan. - Aug. 2018	% change 1/
Category of building	Type of building	Measuring unit						
Residential buildings	Dwelling-houses < 80 square metres	Number	15	15	8	734	123	-83,2
		square metres	832	855	494	31 532	7 489	-76,2
		R'000	6 214	5 324	3 718	125 586	56 789	-54,8
	Dwelling-houses >= 80 square metres	Number	121	108	108	849	741	-12,7
		square metres	32 035	34 118	35 442	258 856	232 391	-10,2
		R'000	293 136	339 742	343 186	2 415 531	2 267 756	-6,1
	Flats and townhouses	Number	154	203	472	2 004	1 741	-13,1
		square metres	23 707	28 073	59 779	299 294	209 895	-29,9
		R'000	194 513	251 786	655 545	2 953 295	2 074 459	-29,8
	Other residential buildings 2/	square metres	4 695	5 772	4 742	19 410	85 792	342,0
		R'000	38 030	67 586	48 103	177 829	1 078 938	506,7
Total residential buildings	R'000	531 893	664 438	1 050 552	5 672 241	5 477 942	-3,4	
Non-residential buildings	Office and banking space	square metres	1 452	1 777	2 828	73 633	107 033	45,4
		R'000	15 967	11 087	31 108	679 079	1 114 923	64,2
	Shopping space	square metres	49 564	5 445	4 347	168 362	54 171	-67,8
		R'000	400 015	47 638	47 817	1 552 039	561 961	-63,8
	Industrial and warehouse space	square metres	97 857	32 404	75 770	263 071	305 314	16,1
		R'000	588 970	194 424	479 790	1 564 507	1 878 699	20,1
	Other non-residential buildings 3/	square metres	412	8 384	2 369	43 451	37 221	-14,3
		R'000	2 055	91 059	19 153	371 529	328 277	-11,6
	Total non-residential buildings	R'000	1 007 007	344 208	577 868	4 167 154	3 883 860	-6,8
	Additions and alterations	Dwelling-houses	square metres	36 079	39 890	33 619	266 434	239 029
R'000			378 022	392 223	336 071	2 582 509	2 356 375	-8,8
Other buildings 4/		square metres	15 630	12 258	14 654	128 247	124 191	-3,2
		R'000	217 300	183 607	222 171	1 450 040	1 512 647	4,3
Total additions and alterations	R'000	595 322	575 830	558 242	4 032 549	3 869 022	-4,1	
Recorded plans passed	Total at current prices	R'000	2 134 222	1 584 476	2 186 662	13 871 944	13 230 824	-4,6

1/ The percentage change between cumulative figures for 2017 and 2018.

2/ Other residential buildings include institutions for the disabled, boarding houses, hostels and tourism accommodation e.g. hotels, motels, guest-houses, holiday chalets, bed-and-breakfast accommodation and casinos.

3/ Other non-residential space includes churches, sport and recreation clubs, schools, crèches, hospitals and all other non-residential space.

4/ Other buildings include other residential buildings, non-residential buildings and internal alterations. No square metres are collected for internal alterations.

Table 15 – Recorded building plans passed by larger municipalities at current prices by type of building: North West

			Aug. 2017	Jul. 2018	Aug. 2018	Jan. - Aug. 2017	Jan. - Aug. 2018	% change 1/
Category of building	Type of building	Measuring unit						
Residential buildings	Dwelling-houses < 80 square metres	Number	6	8	67	920	792	-13,9
		square metres	418	485	3 006	42 319	33 529	-20,8
		R'000	1 991	2 656	15 269	93 641	113 225	20,9
	Dwelling-houses >= 80 square metres	Number	80	58	76	517	496	-4,1
		square metres	21 227	13 450	21 506	134 109	127 253	-5,1
		R'000	115 617	74 231	130 802	716 351	712 358	-0,6
	Flats and townhouses	Number	90	118	19	1 533	855	-44,2
		square metres	7 636	13 144	2 130	160 850	78 008	-51,5
		R'000	49 973	71 565	14 102	967 951	411 978	-57,4
	Other residential buildings 2/	square metres	561	0	0	1 593	6 777	325,4
		R'000	2 800	0	0	7 915	36 643	363,0
	Total residential buildings	R'000	170 381	148 452	160 173	1 785 858	1 274 204	-28,7
Non-residential buildings	Office and banking space	square metres	0	416	0	1 597	3 412	113,7
		R'000	0	1 870	0	10 173	17 142	68,5
	Shopping space	square metres	4 442	7 584	743	16 929	22 226	31,3
		R'000	24 866	37 920	3 961	90 303	119 469	32,3
	Industrial and warehouse space	square metres	895	1 346	3 643	8 447	20 286	140,2
		R'000	4 937	7 179	20 268	40 046	109 000	172,2
	Other non-residential buildings 3/	square metres	2 219	518	1 380	3 531	4 675	32,4
		R'000	10 979	3 288	6 853	16 744	23 480	40,2
	Total non-residential buildings	R'000	40 782	50 257	31 082	157 266	269 091	71,1
	Additions and alterations	Dwelling-houses	square metres	13 994	10 524	9 129	87 791	81 262
R'000			74 077	55 373	51 638	446 783	433 738	-2,9
Other buildings 4/		square metres	2 305	2 287	730	11 996	8 447	-29,6
		R'000	14 281	14 176	4 751	84 309	56 268	-33,3
Total additions and alterations	R'000	88 358	69 549	56 389	531 092	490 006	-7,7	
Recorded plans passed	Total at current prices	R'000	299 521	268 258	247 644	2 474 216	2 033 301	-17,8

1/ The percentage change between cumulative figures for 2017 and 2018.

2/ Other residential buildings include institutions for the disabled, boarding houses, hostels and tourism accommodation e.g. hotels, motels, guest-houses, holiday chalets, bed-and-breakfast accommodation and casinos.

3/ Other non-residential space includes churches, sport and recreation clubs, schools, crèches, hospitals and all other non-residential space.

4/ Other buildings include other residential buildings, non-residential buildings and internal alterations. No square metres are collected for internal alterations.

Table 16 – Recorded building plans passed by larger municipalities at current prices by type of building: Gauteng

			Aug. 2017	Jul. 2018	Aug. 2018	Jan. - Aug. 2017	Jan. - Aug. 2018	% change 1/
Category of building	Type of building	Measuring unit						
Residential buildings	Dwelling-houses < 80 square metres	Number	649	1 290	606	4 266	5 808	36,1
		square metres	33 980	62 490	27 714	212 586	283 485	33,4
		R'000	148 732	332 465	162 451	930 612	1 454 913	56,3
	Dwelling-houses >= 80 square metres	Number	345	402	424	2 863	2 821	-1,5
		square metres	114 459	159 224	128 794	907 374	871 520	-4,0
		R'000	906 689	1 229 983	1 059 854	6 848 040	6 926 081	1,1
	Flats and townhouses	Number	696	1 364	1 887	5 039	6 548	29,9
		square metres	121 143	84 090	261 946	724 084	758 251	4,7
		R'000	940 035	645 371	2 335 452	5 810 336	6 441 136	10,9
	Other residential buildings 2/	square metres	2 497	629	0	7 143	3 819	-46,5
		R'000	15 364	3 527	0	41 331	30 529	-26,1
	Total residential buildings	R'000	2 010 820	2 211 346	3 557 757	13 630 319	14 852 659	9,0
Non-residential buildings	Office and banking space	square metres	18 786	3 147	1 091	243 974	82 667	-66,1
		R'000	215 721	23 607	8 059	2 428 986	868 574	-64,2
	Shopping space	square metres	1 109	18 714	42 635	128 798	157 555	22,3
		R'000	7 752	192 611	423 378	1 164 588	1 377 666	18,3
	Industrial and warehouse space	square metres	129 170	28 966	69 611	603 093	393 769	-34,7
		R'000	758 801	155 952	431 864	3 331 851	2 203 827	-33,9
	Other non-residential buildings 3/	square metres	21 299	7 728	8 081	123 457	82 956	-32,8
		R'000	147 866	47 175	41 952	931 174	625 547	-32,8
	Total non-residential buildings	R'000	1 130 140	419 345	905 253	7 856 599	5 075 614	-35,4
	Additions and alterations	Dwelling-houses	square metres	81 921	80 779	66 531	601 774	576 449
R'000			630 054	648 480	544 354	4 466 739	4 524 599	1,3
Other buildings 4/		square metres	11 364	9 660	8 690	117 839	108 284	-8,1
		R'000	97 951	87 941	80 823	842 801	821 275	-2,6
Total additions and alterations	R'000	728 005	736 421	625 177	5 309 540	5 345 874	0,7	
Recorded plans passed	Total at current prices	R'000	3 868 965	3 367 112	5 088 187	26 796 458	25 274 147	-5,7

1/ The percentage change between cumulative figures for 2017 and 2018.

2/ Other residential buildings include institutions for the disabled, boarding houses, hostels and tourism accommodation e.g. hotels, motels, guest-houses, holiday chalets, bed-and-breakfast accommodation and casinos.

3/ Other non-residential space includes churches, sport and recreation clubs, schools, crèches, hospitals and all other non-residential space.

4/ Other buildings include other residential buildings, non-residential buildings and internal alterations. No square metres are collected for internal alterations.

Table 17 – Recorded building plans passed by larger municipalities at current prices by type of building: Mpumalanga

			Aug. 2017	Jul. 2018	Aug. 2018	Jan. - Aug. 2017	Jan. - Aug. 2018	% change 1/
Category of building	Type of building	Measuring unit						
Residential buildings	Dwelling-houses < 80 square metres	Number	44	22	20	602	164	-72,8
		square metres	2 332	1 314	1 142	29 858	9 211	-69,2
		R'000	11 817	7 251	6 419	128 316	49 527	-61,4
	Dwelling-houses >= 80 square metres	Number	71	56	89	659	612	-7,1
		square metres	22 138	12 736	21 079	177 855	159 122	-10,5
		R'000	128 381	65 641	120 061	950 105	938 253	-1,2
	Flats and townhouses	Number	11	46	0	95	124	30,5
		square metres	2 430	5 775	0	9 526	11 551	21,3
		R'000	11 567	27 495	0	44 015	58 783	33,6
	Other residential buildings 2/	square metres	0	0	0	2 239	7 492	234,6
		R'000	0	0	0	10 077	41 588	312,7
	Total residential buildings	R'000	151 765	100 387	126 480	1 132 513	1 088 151	-3,9
Non-residential buildings	Office and banking space	square metres	0	5 401	2 459	8 745	15 335	75,4
		R'000	0	25 714	12 369	49 453	85 747	73,4
	Shopping space	square metres	145	798	1 337	19 197	19 701	2,6
		R'000	800	3 799	6 787	119 331	96 277	-19,3
	Industrial and warehouse space	square metres	1 505	14 451	7 519	22 585	54 610	141,8
		R'000	10 827	101 392	44 959	121 378	334 718	175,8
	Other non-residential buildings 3/	square metres	1 459	6 470	4 058	12 451	16 525	32,7
		R'000	6 940	43 914	20 152	57 164	94 921	66,1
	Total non-residential buildings	R'000	18 567	174 819	84 267	347 326	611 663	76,1
	Additions and alterations	Dwelling-houses	square metres	11 861	12 120	11 719	84 167	97 960
R'000			64 336	62 119	64 177	409 969	536 059	30,8
Other buildings 4/		square metres	3 227	4 379	3 187	11 289	20 321	80,0
		R'000	29 148	75 898	58 227	132 486	282 273	113,1
Total additions and alterations	R'000	93 484	138 017	122 404	542 455	818 332	50,9	
Recorded plans passed	Total at current prices	R'000	263 816	413 223	333 151	2 022 294	2 518 146	24,5

1/ The percentage change between cumulative figures for 2017 and 2018.

2/ Other residential buildings include institutions for the disabled, boarding houses, hostels and tourism accommodation e.g. hotels, motels, guest-houses, holiday chalets, bed-and-breakfast accommodation and casinos.

3/ Other non-residential space includes churches, sport and recreation clubs, schools, crèches, hospitals and all other non-residential space.

4/ Other buildings include other residential buildings, non-residential buildings and internal alterations. No square metres are collected for internal alterations.

Table 18 – Recorded building plans passed by larger municipalities at current prices by type of building: Limpopo

			Aug. 2017	Jul. 2018	Aug. 2018	Jan. - Aug. 2017	Jan. - Aug. 2018	% change 1/
Category of building	Type of building	Measuring unit						
Residential buildings	Dwelling-houses < 80 square metres	Number	25	8	14	157	163	3,8
		square metres	1 653	438	801	9 957	9 261	-7,0
		R'000	8 856	2 317	4 419	57 728	47 380	-17,9
	Dwelling-houses >= 80 square metres	Number	50	41	35	377	338	-10,3
		square metres	15 128	13 710	11 313	110 669	106 128	-4,1
		R'000	75 639	70 527	62 393	562 851	557 327	-1,0
	Flats and townhouses	Number	31	0	16	222	120	-45,9
		square metres	1 791	0	1 951	28 778	12 873	-55,3
		R'000	9 889	0	10 839	160 600	69 048	-57,0
	Other residential buildings 2/	square metres	0	0	0	2 779	309	-88,9
		R'000	0	0	0	13 169	1 314	-90,0
Total residential buildings	R'000	94 384	72 844	77 651	794 348	675 069	-15,0	
Non-residential buildings	Office and banking space	square metres	0	0	775	11 195	2 905	-74,1
		R'000	0	0	4 308	54 976	15 098	-72,5
	Shopping space	square metres	8 347	0	0	17 220	2 675	-84,5
		R'000	44 156	0	0	92 101	12 595	-86,3
	Industrial and warehouse space	square metres	5 036	1 492	2 952	19 838	22 424	13,0
		R'000	26 326	7 892	15 093	95 080	114 391	20,3
	Other non-residential buildings 3/	square metres	1 020	1 567	3 701	19 045	7 832	-58,9
		R'000	5 396	6 998	19 808	117 619	38 670	-67,1
	Total non-residential buildings	R'000	75 878	14 890	39 209	359 776	180 754	-49,8
	Additions and alterations	Dwelling-houses	square metres	5 977	4 472	4 327	38 334	31 635
R'000			31 738	23 510	23 504	193 289	165 045	-14,6
Other buildings 4/		square metres	517	249	756	3 880	8 611	121,9
		R'000	6 735	6 818	10 784	34 448	71 118	106,5
Total additions and alterations	R'000	38 473	30 328	34 288	227 737	236 163	3,7	
Recorded plans passed	Total at current prices	R'000	208 735	118 062	151 148	1 381 861	1 091 986	-21,0

1/ The percentage change between cumulative figures for 2017 and 2018.

2/ Other residential buildings include institutions for the disabled, boarding houses, hostels and tourism accommodation e.g. hotels, motels, guest-houses, holiday chalets, bed-and-breakfast accommodation and casinos.

3/ Other non-residential space includes churches, sport and recreation clubs, schools, crèches, hospitals and all other non-residential space.

4/ Other buildings include other residential buildings, non-residential buildings and internal alterations. No square metres are collected for internal alterations.

Table 19 – Buildings reported as completed to larger municipalities at current prices by type of building: South Africa

			Aug. 2017	Jul. 2018	Aug. 2018	Jan. - Aug. 2017	Jan. - Aug. 2018	% change 1/	
Category of building	Type of building	Measuring unit							
Residential buildings	Dwelling-houses < 80 square metres	Number	1 333	1 507	850	10 331	7 109	-31,2	
		square metres	63 610	78 449	41 869	497 895	359 414	-27,8	
		R'000	315 137	502 580	251 399	2 336 280	2 112 413	-9,6	
	Dwelling-houses >= 80 square metres	Number	912	1 074	878	6 582	6 662	1,2	
		square metres	230 016	256 215	212 942	1 765 850	1 691 333	-4,2	
		R'000	1 677 184	1 946 367	1 578 462	12 594 293	12 414 449	-1,4	
	Flats and townhouses	Number	778	1 810	1 144	9 009	10 088	12,0	
		square metres	108 616	273 202	130 486	923 310	1 420 582	53,9	
		R'000	881 851	2 349 724	1 038 082	7 487 943	11 330 697	51,3	
	Other residential buildings 2/	square metres	16 472	10 457	871	235 868	48 245	-79,5	
		R'000	147 230	120 103	5 405	2 236 651	387 470	-82,7	
	Total residential buildings		R'000	3 021 402	4 918 774	2 873 348	24 655 167	26 245 029	6,4
Non-residential buildings	Office and banking space	square metres	18 416	94 581	25 736	354 134	423 252	19,5	
		R'000	166 877	871 230	267 610	3 226 906	3 947 143	22,3	
	Shopping space	square metres	46 711	41 944	10 623	484 152	207 608	-57,1	
		R'000	383 642	362 228	82 152	3 821 009	1 747 207	-54,3	
	Industrial and warehouse space	square metres	101 395	55 338	98 499	772 396	639 868	-17,2	
		R'000	790 129	349 352	549 270	4 494 635	3 725 776	-17,1	
	Other non-residential buildings 3/	square metres	27 084	9 647	21 587	146 770	112 537	-23,3	
		R'000	197 560	66 258	161 160	1 104 300	820 002	-25,7	
	Total non-residential buildings		R'000	1 538 208	1 649 068	1 060 192	12 646 850	10 240 128	-19,0
	Additions and alterations	Dwelling-houses	square metres	113 111	131 465	84 798	782 188	756 381	-3,3
R'000			818 009	930 103	637 601	5 020 835	5 438 391	8,3	
Other buildings 4/		square metres	31 638	41 795	62 397	243 681	306 888	25,9	
		R'000	303 286	431 985	547 397	2 416 989	2 837 539	17,4	
Total additions and alterations		R'000	1 121 295	1 362 088	1 184 998	7 437 824	8 275 930	11,3	
Recorded buildings completed	Total at current prices		R'000	5 680 905	7 929 930	5 118 538	44 739 841	44 761 087	0,0

1/ The percentage change between cumulative figures for 2017 and 2018.

2/ Other residential buildings include institutions for the disabled, boarding houses, hostels and tourism accommodation e.g. hotels, motels, guest-houses, holiday chalets, bed-and-breakfast accommodation and casinos.

3/ Other non-residential space includes churches, sport and recreation clubs, schools, crèches, hospitals and all other non-residential space.

4/ Other buildings include other residential buildings, non-residential buildings and internal alterations. No square metres are collected for internal alterations.

Table 20 – Buildings reported as completed to larger municipalities at current prices by type of building: Western Cape

			Aug. 2017	Jul. 2018	Aug. 2018	Jan. - Aug. 2017	Jan. - Aug. 2018	% change 1/	
Category of building	Type of building	Measuring unit							
Residential buildings	Dwelling-houses < 80 square metres	Number	439	611	336	3 846	2 733	-28,9	
		square metres	20 567	27 044	14 819	176 330	124 556	-29,4	
		R'000	115 612	159 549	84 246	969 806	721 559	-25,6	
	Dwelling-houses >= 80 square metres	Number	356	354	292	2 289	2 220	-3,0	
		square metres	81 626	83 704	70 808	535 442	525 387	-1,9	
		R'000	531 996	575 495	472 048	3 503 586	3 537 739	1,0	
	Flats and townhouses	Number	127	416	450	1 839	3 616	96,6	
		square metres	24 915	55 077	36 053	230 487	387 106	68,0	
		R'000	193 301	424 665	286 098	1 758 324	2 980 130	69,5	
	Other residential buildings 2/	square metres	12 990	510	260	79 668	23 381	-70,7	
		R'000	112 342	3 560	1 805	645 301	178 035	-72,4	
	Total residential buildings		R'000	953 251	1 163 269	844 197	6 877 017	7 417 463	7,9
Non-residential buildings	Office and banking space	square metres	6 448	41 669	350	116 296	76 478	-34,2	
		R'000	63 190	356 690	2 646	879 854	612 748	-30,4	
	Shopping space	square metres	16 203	24 134	2 311	42 658	70 438	65,1	
		R'000	124 364	188 016	17 630	320 209	550 157	71,8	
	Industrial and warehouse space	square metres	70 557	14 671	37 398	231 466	173 565	-25,0	
		R'000	614 074	98 577	209 820	1 681 648	1 109 320	-34,0	
	Other non-residential buildings 3/	square metres	12 920	6 381	1 752	41 149	50 214	22,0	
		R'000	78 123	45 620	15 933	264 972	354 255	33,7	
	Total non-residential buildings		R'000	879 751	688 903	246 029	3 146 683	2 626 480	-16,5
	Additions and alterations	Dwelling-houses	square metres	51 191	56 859	41 113	372 336	295 210	-20,7
R'000			303 476	325 654	269 853	2 100 431	1 822 991	-13,2	
Other buildings 4/		square metres	12 931	24 590	30 005	102 520	142 868	39,4	
		R'000	142 142	244 049	227 830	1 057 257	1 319 375	24,8	
Total additions and alterations		R'000	445 618	569 703	497 683	3 157 688	3 142 366	-0,5	
Recorded buildings completed	Total at current prices		R'000	2 278 620	2 421 875	1 587 909	13 181 388	13 186 309	0,0

1/ The percentage change between cumulative figures for 2017 and 2018.

2/ Other residential buildings include institutions for the disabled, boarding houses, hostels and tourism accommodation e.g. hotels, motels, guest-houses, holiday chalets, bed-and-breakfast accommodation and casinos.

3/ Other non-residential space includes churches, sport and recreation clubs, schools, crèches, hospitals and all other non-residential space.

4/ Other buildings include other residential buildings, non-residential buildings and internal alterations. No square metres are collected for internal alterations.

Table 21 – Buildings reported as completed to larger municipalities at current prices by type of building: Eastern Cape

			Aug. 2017	Jul. 2018	Aug. 2018	Jan. - Aug. 2017	Jan. - Aug. 2018	% change 1/	
Category of building	Type of building	Measuring unit							
Residential buildings	Dwelling-houses < 80 square metres	Number	83	23	17	283	173	-38,9	
		square metres	3 714	1 367	838	14 530	9 553	-34,3	
		R'000	14 017	8 542	4 709	69 736	53 143	-23,8	
	Dwelling-houses >= 80 square metres	Number	75	100	48	418	395	-5,5	
		square metres	14 603	18 108	10 254	84 164	80 932	-3,8	
		R'000	93 719	117 576	69 342	481 793	535 010	11,0	
	Flats and townhouses	Number	1	56	49	71	159	123,9	
		square metres	204	4 215	3 923	6 588	15 674	137,9	
		R'000	1 374	27 908	28 139	38 293	103 824	171,1	
	Other residential buildings 2/	square metres	0	0	0	4 056	0	..	
		R'000	0	0	0	23 020	0	..	
	Total residential buildings		R'000	109 110	154 026	102 190	612 842	691 977	12,9
Non-residential buildings	Office and banking space	square metres	0	0	0	3 361	1 056	-68,6	
		R'000	0	0	0	15 173	6 804	-55,2	
	Shopping space	square metres	0	1 474	237	1 892	2 124	12,3	
		R'000	0	9 100	1 177	9 025	12 023	33,2	
	Industrial and warehouse space	square metres	124	4 904	0	18 467	41 784	126,3	
		R'000	787	30 653	0	92 846	254 593	174,2	
	Other non-residential buildings 3/	square metres	0	1 189	6 962	4 902	8 424	71,8	
		R'000	0	7 670	44 557	24 861	53 675	115,9	
	Total non-residential buildings		R'000	787	47 423	45 734	141 905	327 095	130,5
	Additions and alterations	Dwelling-houses	square metres	8 129	21 785	5 628	64 076	66 778	4,2
R'000			50 915	142 583	37 155	325 814	424 081	30,2	
Other buildings 4/		square metres	2 784	2 005	5 785	20 298	19 914	-1,9	
		R'000	17 876	13 452	37 672	146 344	144 345	-1,4	
Total additions and alterations		R'000	68 791	156 035	74 827	472 158	568 426	20,4	
Recorded buildings completed	Total at current prices		R'000	178 688	357 484	222 751	1 226 905	1 587 498	29,4

1/ The percentage change between cumulative figures for 2017 and 2018.

2/ Other residential buildings include institutions for the disabled, boarding houses, hostels and tourism accommodation e.g. hotels, motels, guest-houses, holiday chalets, bed-and-breakfast accommodation and casinos.

3/ Other non-residential space includes churches, sport and recreation clubs, schools, crèches, hospitals and all other non-residential space.

4/ Other buildings include other residential buildings, non-residential buildings and internal alterations. No square metres are collected for internal alterations.

Table 22 – Buildings reported as completed to larger municipalities at current prices by type of building: Northern Cape

			Aug. 2017	Jul. 2018	Aug. 2018	Jan. - Aug. 2017	Jan. - Aug. 2018	% change 1/	
Category of building	Type of building	Measuring unit							
Residential buildings	Dwelling-houses < 80 square metres	Number	0	0	1	1	10	900,0	
		square metres	0	0	55	76	660	768,4	
		R'000	0	0	413	456	5 133	1 025,7	
	Dwelling-houses >= 80 square metres	Number	2	2	4	36	28	-22,2	
		square metres	384	739	1 200	7 747	6 161	-20,5	
		R'000	3 088	6 198	9 261	53 787	46 172	-14,2	
	Flats and townhouses	Number	0	0	0	17	1	-94,1	
		square metres	0	0	0	1 928	146	-92,4	
		R'000	0	0	0	13 449	1 174	-91,3	
	Other residential buildings 2/	square metres	0	0	0	935	0	..	
		R'000	0	0	0	5 512	0	..	
	Total residential buildings		R'000	3 088	6 198	9 674	73 204	52 479	-28,3
	Non-residential buildings	Office and banking space	square metres	615	0	0	3 439	299	-91,3
R'000			3 998	0	0	19 157	2 093	-89,1	
Shopping space		square metres	1 306	0	0	1 426	0	..	
		R'000	10 502	0	0	11 222	0	..	
Industrial and warehouse space		square metres	0	0	0	374	521	39,3	
		R'000	0	0	0	2 842	3 647	28,3	
Other non-residential buildings 3/		square metres	0	0	0	16 448	0	..	
		R'000	0	0	0	132 258	0	..	
Total non-residential buildings		R'000	14 500	0	0	165 479	5 740	-96,5	
Additions and alterations		Dwelling-houses	square metres	1 982	1 572	2 019	12 826	19 188	49,6
	R'000		15 011	12 749	15 143	95 867	143 201	49,4	
	Other buildings 4/	square metres	78	540	398	3 156	7 349	132,9	
		R'000	671	4 050	6 085	23 960	66 920	179,3	
Total additions and alterations		R'000	15 682	16 799	21 228	119 827	210 121	75,4	
Recorded buildings completed	Total at current prices		R'000	33 270	22 997	30 902	358 510	268 340	-25,2

1/ The percentage change between cumulative figures for 2017 and 2018.

2/ Other residential buildings include institutions for the disabled, boarding houses, hostels and tourism accommodation e.g. hotels, motels, guest-houses, holiday chalets, bed-and-breakfast accommodation and casinos.

3/ Other non-residential space includes churches, sport and recreation clubs, schools, crèches, hospitals and all other non-residential space.

4/ Other buildings include other residential buildings, non-residential buildings and internal alterations. No square metres are collected for internal alterations.

Table 23 – Buildings reported as completed to larger municipalities at current prices by type of building: Free State

			Aug. 2017	Jul. 2018	Aug. 2018	Jan. - Aug. 2017	Jan. - Aug. 2018	% change 1/	
Category of building	Type of building	Measuring unit							
Residential buildings	Dwelling-houses < 80 square metres	Number	8	11	11	103	136	32,0	
		square metres	415	624	572	5 646	7 844	38,9	
		R'000	2 896	4 366	4 418	23 935	45 926	91,9	
	Dwelling-houses >= 80 square metres	Number	14	7	24	112	118	5,4	
		square metres	2 114	1 451	4 398	21 008	23 928	13,9	
		R'000	14 234	8 499	31 238	116 133	152 146	31,0	
	Flats and townhouses	Number	0	32	41	407	313	-23,1	
		square metres	0	4 131	8 086	31 973	40 329	26,1	
		R'000	0	30 594	62 456	216 731	300 907	38,8	
	Other residential buildings 2/	square metres	0	0	0	168	402	139,3	
		R'000	0	0	0	756	2 144	183,6	
	Total residential buildings		R'000	17 130	43 459	98 112	357 555	501 123	40,2
Non-residential buildings	Office and banking space	square metres	0	0	1 206	2 573	6 974	171,0	
		R'000	0	0	9 315	17 649	51 500	191,8	
	Shopping space	square metres	64	0	0	983	2 145	118,2	
		R'000	474	0	0	5 129	12 664	146,9	
	Industrial and warehouse space	square metres	0	0	9 627	1 340	10 162	658,4	
		R'000	0	0	74 050	7 315	77 446	958,7	
	Other non-residential buildings 3/	square metres	4 520	0	0	4 520	326	-92,8	
		R'000	36 216	0	0	36 216	2 000	-94,5	
	Total non-residential buildings		R'000	36 690	0	83 365	66 309	143 610	116,6
	Additions and alterations	Dwelling-houses	square metres	4 170	683	1 923	27 259	14 050	-48,5
R'000			24 762	4 005	10 958	132 380	77 916	-41,1	
Other buildings 4/		square metres	487	0	330	1 319	7 538	471,5	
		R'000	2 744	5 609	4 270	92 147	70 139	-23,9	
Total additions and alterations		R'000	27 506	9 614	15 228	224 527	148 055	-34,1	
Recorded buildings completed	Total at current prices		R'000	81 326	53 073	196 705	648 391	792 788	22,3

1/ The percentage change between cumulative figures for 2017 and 2018.

2/ Other residential buildings include institutions for the disabled, boarding houses, hostels and tourism accommodation e.g. hotels, motels, guest-houses, holiday chalets, bed-and-breakfast accommodation and casinos.

3/ Other non-residential space includes churches, sport and recreation clubs, schools, crèches, hospitals and all other non-residential space.

4/ Other buildings include other residential buildings, non-residential buildings and internal alterations. No square metres are collected for internal alterations.

Table 24 – Buildings reported as completed to larger municipalities at current prices by type of building: KwaZulu-Natal

			Aug. 2017	Jul. 2018	Aug. 2018	Jan. - Aug. 2017	Jan. - Aug. 2018	% change 1/	
Category of building	Type of building	Measuring unit							
Residential buildings	Dwelling-houses < 80 square metres	Number	28	16	20	90	160	77,8	
		square metres	1 636	905	1 140	5 129	9 444	84,1	
		R'000	14 894	9 258	11 984	46 039	101 030	119,4	
	Dwelling-houses >= 80 square metres	Number	85	71	84	554	592	6,9	
		square metres	26 547	21 438	24 047	169 229	161 470	-4,6	
		R'000	271 582	233 911	272 984	1 593 249	1 655 677	3,9	
	Flats and townhouses	Number	56	64	36	927	360	-61,2	
		square metres	12 339	10 077	8 057	119 282	64 742	-45,7	
		R'000	112 968	116 886	75 922	1 133 148	628 267	-44,6	
	Other residential buildings 2/	square metres	2 697	9 705	0	14 792	10 986	-25,7	
		R'000	30 237	115 454	0	165 085	128 626	-22,1	
	Total residential buildings		R'000	429 681	475 509	360 890	2 937 521	2 513 600	-14,4
	Non-residential buildings	Office and banking space	square metres	0	955	7 887	48 345	49 172	1,7
R'000			0	10 505	86 757	497 211	534 913	7,6	
Shopping space		square metres	6 335	10 547	2 191	274 725	46 353	-83,1	
		R'000	69 809	119 803	24 101	2 267 303	480 299	-78,8	
Industrial and warehouse space		square metres	22 549	6 721	5 128	121 245	88 466	-27,0	
		R'000	130 172	42 651	30 870	696 630	529 641	-24,0	
Other non-residential buildings 3/		square metres	164	612	10 125	16 442	18 969	15,4	
		R'000	1 607	5 202	82 013	153 161	161 349	5,3	
Total non-residential buildings		R'000	201 588	178 161	223 741	3 614 305	1 706 202	-52,8	
Additions and alterations		Dwelling-houses	square metres	17 862	18 616	13 420	89 516	121 952	36,2
	R'000		196 403	213 065	153 365	910 784	1 278 296	40,4	
	Other buildings 4/	square metres	7 391	5 220	12 830	49 993	42 115	-15,8	
		R'000	72 076	51 927	155 129	530 943	438 512	-17,4	
Total additions and alterations		R'000	268 479	264 992	308 494	1 441 727	1 716 808	19,1	
Recorded buildings completed	Total at current prices		R'000	899 748	918 662	893 125	7 993 553	5 936 610	-25,7

1/ The percentage change between cumulative figures for 2017 and 2018.

2/ Other residential buildings include institutions for the disabled, boarding houses, hostels and tourism accommodation e.g. hotels, motels, guest-houses, holiday chalets, bed-and-breakfast accommodation and casinos.

3/ Other non-residential space includes churches, sport and recreation clubs, schools, crèches, hospitals and all other non-residential space.

4/ Other buildings include other residential buildings, non-residential buildings and internal alterations. No square metres are collected for internal alterations.

Table 25 – Buildings reported as completed to larger municipalities at current prices by type of building: North West

			Aug. 2017	Jul. 2018	Aug. 2018	Jan. - Aug. 2017	Jan. - Aug. 2018	% change 1/	
Category of building	Type of building	Measuring unit							
Residential buildings	Dwelling-houses < 80 square metres	Number	11	26	3	275	246	-10,5	
		square metres	647	1 407	165	16 023	14 527	-9,3	
		R'000	2 880	5 964	730	71 025	72 790	2,5	
	Dwelling-houses >= 80 square metres	Number	25	39	40	395	490	24,1	
		square metres	5 784	8 517	9 807	82 528	100 867	22,2	
		R'000	30 787	47 463	56 955	434 869	568 160	30,7	
	Flats and townhouses	Number	73	12	12	242	475	96,3	
		square metres	6 191	1 297	1 839	21 402	53 719	151,0	
		R'000	30 155	6 416	11 207	119 851	298 840	149,3	
	Other residential buildings 2/	square metres	785	242	0	785	242	-69,2	
		R'000	4 651	1 089	0	4 651	1 089	-76,6	
	Total residential buildings		R'000	68 473	60 932	68 892	630 396	940 879	49,3
	Non-residential buildings	Office and banking space	square metres	0	0	480	6 983	1 909	-72,7
R'000			0	0	2 400	39 978	10 821	-72,9	
Shopping space		square metres	9 323	2 438	4 030	27 555	7 805	-71,7	
		R'000	55 888	14 020	20 150	149 937	41 427	-72,4	
Industrial and warehouse space		square metres	254	1 080	459	14 292	7 951	-44,4	
		R'000	1 075	5 400	2 295	69 248	38 027	-45,1	
Other non-residential buildings 3/		square metres	0	0	0	1 191	5 459	358,4	
		R'000	0	0	0	5 955	30 629	414,3	
Total non-residential buildings		R'000	56 963	19 420	24 845	265 118	120 904	-54,4	
Additions and alterations		Dwelling-houses	square metres	344	1 945	2 083	27 289	47 607	74,5
	R'000		1 828	10 549	11 822	127 753	285 865	123,8	
	Other buildings 4/	square metres	480	305	0	10 368	7 280	-29,8	
		R'000	3 225	1 931	70	63 780	45 077	-29,3	
Total additions and alterations		R'000	5 053	12 480	11 892	191 533	330 942	72,8	
Recorded buildings completed	Total at current prices		R'000	130 489	92 832	105 629	1 087 047	1 392 725	28,1

1/ The percentage change between cumulative figures for 2017 and 2018.

2/ Other residential buildings include institutions for the disabled, boarding houses, hostels and tourism accommodation e.g. hotels, motels, guest-houses, holiday chalets, bed-and-breakfast accommodation and casinos.

3/ Other non-residential space includes churches, sport and recreation clubs, schools, crèches, hospitals and all other non-residential space.

4/ Other buildings include other residential buildings, non-residential buildings and internal alterations. No square metres are collected for internal alterations.

Table 26 – Buildings reported as completed to larger municipalities at current prices by type of building: Gauteng

			Aug. 2017	Jul. 2018	Aug. 2018	Jan. - Aug. 2017	Jan. - Aug. 2018	% change 1/	
Category of building	Type of building	Measuring unit							
Residential buildings	Dwelling-houses < 80 square metres	Number	701	780	413	4 687	3 317	-29,2	
		square metres	33 969	44 847	21 534	231 742	173 656	-25,1	
		R'000	151 771	303 055	130 606	995 230	1 014 007	1,9	
	Dwelling-houses >= 80 square metres	Number	289	405	311	2 326	2 160	-7,1	
		square metres	82 259	104 975	68 487	758 921	626 476	-17,5	
		R'000	645 966	857 839	534 507	5 878 514	4 999 447	-15,0	
	Flats and townhouses	Number	495	1 217	536	5 172	5 043	-2,5	
		square metres	61 473	197 370	71 141	475 129	848 435	78,6	
		R'000	527 418	1 737 780	566 091	4 034 755	6 959 138	72,5	
	Other residential buildings 2/	square metres	0	0	0	128 661	1 260	-99,0	
		R'000	0	0	0	1 359 092	8 807	-99,4	
	Total residential buildings		R'000	1 325 155	2 898 674	1 231 204	12 267 591	12 981 399	5,8
	Non-residential buildings	Office and banking space	square metres	8 713	51 957	15 415	168 850	279 974	65,8
R'000			87 120	504 035	164 515	1 737 138	2 689 435	54,8	
Shopping space		square metres	13 305	3 351	1 854	117 255	59 152	-49,6	
		R'000	121 772	31 289	19 094	972 872	551 677	-43,3	
Industrial and warehouse space		square metres	7 695	23 107	42 924	347 218	291 060	-16,2	
		R'000	42 467	144 147	215 888	1 756 568	1 570 132	-10,6	
Other non-residential buildings 3/		square metres	7 833	820	2 748	56 687	27 697	-51,1	
		R'000	72 441	4 354	18 657	458 781	211 155	-54,0	
Total non-residential buildings		R'000	323 800	683 825	418 154	4 925 359	5 022 399	2,0	
Additions and alterations		Dwelling-houses	square metres	26 983	22 841	15 109	164 281	159 334	-3,0
	R'000		213 293	173 808	119 211	1 215 441	1 217 457	0,2	
	Other buildings 4/	square metres	4 529	8 997	9 826	48 996	72 084	47,1	
		R'000	43 974	98 540	86 021	447 917	612 444	36,7	
	Total additions and alterations		R'000	257 267	272 348	205 232	1 663 358	1 829 901	10,0
Recorded buildings completed	Total at current prices		R'000	1 906 222	3 854 847	1 854 590	18 856 308	19 833 699	5,2

1/ The percentage change between cumulative figures for 2017 and 2018.

2/ Other residential buildings include institutions for the disabled, boarding houses, hostels and tourism accommodation e.g. hotels, motels, guest-houses, holiday chalets, bed-and-breakfast accommodation and casinos.

3/ Other non-residential space includes churches, sport and recreation clubs, schools, crèches, hospitals and all other non-residential space.

4/ Other buildings include other residential buildings, non-residential buildings and internal alterations. No square metres are collected for internal alterations.

Table 27 – Buildings reported as completed to larger municipalities at current prices by type of building: Mpumalanga

			Aug. 2017	Jul. 2018	Aug. 2018	Jan. - Aug. 2017	Jan. - Aug. 2018	% change 1/	
Category of building	Type of building	Measuring unit							
Residential buildings	Dwelling-houses < 80 square metres	Number	51	30	33	467	238	-49,0	
		square metres	1 922	1 705	1 718	22 126	13 286	-40,0	
		R'000	9 152	8 936	8 622	93 654	67 445	-28,0	
	Dwelling-houses >= 80 square metres	Number	43	71	51	283	462	63,3	
		square metres	9 840	11 263	17 070	62 522	113 074	80,9	
		R'000	50 192	68 305	95 144	308 201	646 606	109,8	
	Flats and townhouses	Number	26	0	0	218	49	-77,5	
		square metres	3 494	0	0	23 685	2 769	-88,3	
		R'000	16 635	0	0	110 494	17 100	-84,5	
	Other residential buildings 2/	square metres	0	0	0	0	2 307	..	
		R'000	0	0	0	0	15 648	..	
	Total residential buildings		R'000	75 979	77 241	103 766	512 349	746 799	45,8
Non-residential buildings	Office and banking space	square metres	2 640	0	398	2 965	654	-77,9	
		R'000	12 569	0	1 977	14 032	3 196	-77,2	
	Shopping space	square metres	175	0	0	16 180	8 414	-48,0	
		R'000	833	0	0	77 259	40 059	-48,1	
	Industrial and warehouse space	square metres	216	3 779	0	12 180	12 454	2,2	
		R'000	1 554	23 345	0	59 461	69 637	17,1	
	Other non-residential buildings 3/	square metres	242	0	0	2 587	214	-91,7	
		R'000	1 741	0	0	13 469	1 020	-92,4	
	Total non-residential buildings		R'000	16 697	23 345	1 977	164 221	113 912	-30,6
	Additions and alterations	Dwelling-houses	square metres	2 009	7 058	3 132	22 245	29 109	30,9
R'000			9 988	47 165	18 314	100 957	172 505	70,9	
Other buildings 4/		square metres	2 958	138	3 223	4 658	6 775	45,4	
		R'000	20 078	11 927	28 820	38 939	128 332	229,6	
Total additions and alterations		R'000	30 066	59 092	47 134	139 896	300 837	115,0	
Recorded buildings completed	Total at current prices		R'000	122 742	159 678	152 877	816 466	1 161 548	42,3

1/ The percentage change between cumulative figures for 2017 and 2018.

2/ Other residential buildings include institutions for the disabled, boarding houses, hostels and tourism accommodation e.g. hotels, motels, guest-houses, holiday chalets, bed-and-breakfast accommodation and casinos.

3/ Other non-residential space includes churches, sport and recreation clubs, schools, crèches, hospitals and all other non-residential space.

4/ Other buildings include other residential buildings, non-residential buildings and internal alterations. No square metres are collected for internal alterations.

Table 28 – Buildings reported as completed to larger municipalities at current prices by type of building: Limpopo

			Aug. 2017	Jul. 2018	Aug. 2018	Jan. - Aug. 2017	Jan. - Aug. 2018	% change 1/	
Category of building	Type of building	Measuring unit							
Residential buildings	Dwelling-houses < 80 square metres	Number	12	10	16	579	96	-83,4	
		square metres	740	550	1 028	26 293	5 888	-77,6	
		R'000	3 915	2 910	5 671	66 399	31 380	-52,7	
	Dwelling-houses >= 80 square metres	Number	23	25	24	169	197	16,6	
		square metres	6 859	6 020	6 871	44 289	53 038	19,8	
		R'000	35 620	31 081	36 983	224 161	273 492	22,0	
	Flats and townhouses	Number	0	13	20	116	72	-37,9	
		square metres	0	1 035	1 387	12 836	7 662	-40,3	
		R'000	0	5 475	8 169	62 898	41 317	-34,3	
	Other residential buildings 2/	square metres	0	0	611	6 803	9 667	42,1	
		R'000	0	0	3 600	33 234	53 121	59,8	
	Total residential buildings		R'000	39 535	39 466	54 423	386 692	399 310	3,3
Non-residential buildings	Office and banking space	square metres	0	0	0	1 322	6 736	409,5	
		R'000	0	0	0	6 714	35 633	430,7	
	Shopping space	square metres	0	0	0	1 478	11 177	656,2	
		R'000	0	0	0	8 053	58 901	631,4	
	Industrial and warehouse space	square metres	0	1 076	2 963	25 814	13 905	-46,1	
		R'000	0	4 579	16 347	128 077	73 333	-42,7	
	Other non-residential buildings 3/	square metres	1 405	645	0	2 844	1 234	-56,6	
		R'000	7 432	3 412	0	14 627	5 919	-59,5	
	Total non-residential buildings		R'000	7 432	7 991	16 347	157 471	173 786	10,4
	Additions and alterations	Dwelling-houses	square metres	441	106	371	2 360	3 153	33,6
R'000			2 333	525	1 780	11 408	16 079	40,9	
Other buildings 4/		square metres	0	0	0	2 373	965	-59,3	
		R'000	500	500	1 500	15 702	12 395	-21,1	
Total additions and alterations		R'000	2 833	1 025	3 280	27 110	28 474	5,0	
Recorded buildings completed	Total at current prices		R'000	49 800	48 482	74 050	571 273	601 570	5,3

1/ The percentage change between cumulative figures for 2017 and 2018.

2/ Other residential buildings include institutions for the disabled, boarding houses, hostels and tourism accommodation e.g. hotels, motels, guest-houses, holiday chalets, bed-and-breakfast accommodation and casinos.

3/ Other non-residential space includes churches, sport and recreation clubs, schools, crèches, hospitals and all other non-residential space.

4/ Other buildings include other residential buildings, non-residential buildings and internal alterations. No square metres are collected for internal alterations.

Explanatory notes

Introduction	1	Statistics South Africa (Stats SA) conducts a monthly building statistics survey collecting information regarding building plans passed and buildings completed, financed by the private sector, from the largest local government institutions in South Africa. According to these institutions, they are not always notified about low-cost housing projects and, therefore, do not include the bulk of low-cost dwelling-houses in their reporting. Data regarding subsidised low-cost dwelling-houses can be obtained from the Department of Human Settlements.
	2	In order to improve timeliness of the publication, some information for the current month has been estimated due to late submission by respondents. These estimates will be revised in the next statistical release(s) as soon as actual information is available.
Purpose of the survey	3	The monthly survey data are used in monitoring the state of economy and formulation of economic policy. Furthermore, the results are important inputs to estimate the gross domestic product (GDP) and to calculate the Composite Leading Business Cycle Indicator. The data are extensively used by the private sector.
Scope of the survey	4	This survey covers local government institutions conducting activities for the private sector regarding: <ul style="list-style-type: none"> • passing of building plans; and • final inspection of completed buildings.
Classification	5	Building activities are classified in division 5 according to the 1993 edition of the <i>Standard Industrial Classification of all Economic Activities</i> , (SIC) Fifth Edition, Report No. 09-90-02. The SIC is based on the 1990 <i>International Standard Industrial Classification of all Economic Activities</i> (ISIC) with suitable adaptations for local conditions.
Collection rate	6	The preliminary collection rate for the survey on building statistics for August 2018 was 91,8%. The improved collection rate for July 2018 was 96,4%.
Statistical unit	7	The statistical unit for the collection of information is a local government institution. Local government institutions include district municipalities, metropolitan municipalities and local municipalities.
Survey methodology and design	8	Stats SA conducts a monthly survey of metropolitan municipalities and large local municipalities on building plans passed and buildings completed. An annual survey of the remaining municipalities is conducted regarding buildings completed. The monthly survey represents approximately 85 percent of the total value of buildings completed. Information regarding building plans passed and buildings completed for the private sector is collected by mail, fax and telephone.
Constant prices	9	The value of building plans passed and buildings completed at constant prices measures building activities in terms of ruling prices in a specific base year, which is currently 2015. The value of building plans passed at constant prices for each month is obtained by deflating the values at current prices with a price index known as the 'lump sum domestic buildings' as published in statistical release P0151: <i>Contract Price Adjustment Provisions (CPAP) Work Groups and Selected Materials Indices</i> . In order to be applicable, these indices (base December 2016=100) are converted to the base year 2015=100.

- Seasonal adjustment** 10 Seasonally adjusted estimates of building plans passed and buildings completed are generated each month, using the X-12-ARIMA Seasonal Adjustment Program developed by US Bureau of the Census Economic Research and Analyses Division, 1968.
- 11 Seasonal adjustment is a means of removing the estimated effects of normal seasonal variation from the series so that the effects of other influences on the series can be more clearly recognised. Seasonal adjustment does not aim to remove irregular or non-seasonal influences which may be present in any particular month. Influences that are volatile or unsystematic can still make it difficult to interpret the movement of the series even after adjustment for seasonal variations. Therefore, the month-to-month movements of seasonally adjusted estimates may not be reliable indicators of trend behaviour. The X-12-ARIMA procedure for building statistics is described in more detail on the Stats SA website at [Click to download building statistics seasonal adjustment May 2017](#)
- Trend cycle** 12 The trend is a long-term pattern or movement of a time series. The X-12-ARIMA Seasonal Adjustment Program is used for smoothing seasonally adjusted data.
- Revised figures** 13 Revised figures are due to late submission of data to Stats SA, or to respondents reporting revisions or corrections to their figures. Figures for the latest two years are therefore preliminary. Data are edited at municipal level.
- 14 Once a year the annual statistical release P5041.3: *Selected building statistics of the private sector as reported by local government institutions* is published with the revised and updated information at provincial and municipal level for the previous calendar year. Due to this comprehensive revision, the monthly statistical release P5041.1 reflects provincial revision where applicable.
- Related publications** 15 Users may also wish to refer to the following publications:
- P5041.3: *Selected building statistics of the private sector as reported by local government institutions* issued annually;
 - P9101.2: *Actual and expected expenditure on construction by the public sector per statistical region* issued annually; and
 - *Building Statistics* (Report No. 50-11-01) issued annually.
- Rounding-off of figures** 16 Where necessary, the figures in the tables have been rounded off to the nearest digit shown.

Symbols and abbreviations

17	..	No meaningful percentage change between two specified periods available since either one or both of the totals are nil
	0	Nil or figure too small to publish.
	*	Revised.
	Stats SA	Statistics South Africa.
	SIC	Standard Industrial Classification of all Economic Activities.
	ISIC	International Standard Industrial Classification of all Economic Activities.

Glossary

Additions and alterations	Extensions to existing buildings as well as internal and external alterations of existing buildings.
Blocks of flats	High-density housing consisting of a number of self-contained dwelling-units, each with at least one living-room together with a kitchen and bathroom, conjoined to similar units in one building.
Dwelling-house	A free-standing, complete structure on a separate stand or a self-contained dwelling-unit, e.g. granny flat, on the same premises as an existing residence. Out-buildings and garages are included.
Local government institutions	<p>Include:</p> <ul style="list-style-type: none"> • District municipalities; • Metropolitan municipalities; and • Local municipalities.
Municipality	A generic term describing the “unit” of government in the local spheres responsible for local government in a geographically demarcated area and including district, metropolitan and local municipalities. It is an institution consisting of a municipal council (elected political representatives) and municipal administration (appointed officials).
District municipality	A municipality that has municipal executive and legislative authority in an area that includes more than one municipality, and which is described in section 155(1) of the Constitution as a category C municipality (refer to Local Government: Municipal Structure Act, 1998 (Act No. 117 of 1998)).
Metropolitan municipality	A municipality that has municipal executive and legislative authority in an area that includes more than one municipality, and which is described in section 155(1) of the Constitution as a category A municipality (refer to Local Government: Municipal Structure Act, 1998 (Act No. 117 of 1998)).
Local municipality	A municipality that shares municipal executive and legislative authority in its area with a district municipality within whose area it falls, which is described in section 155(1) of the constitution as a category B municipality.
Non-residential buildings	Factories and commercial, financial and other office buildings, as well as other buildings not used for residential purposes, such as churches, halls, clubs, schools and hospitals.
Other residential buildings	Institutions for the disabled, boarding houses, old people’s homes, hostels, hotels, motels, guesthouses, holiday chalets, bed-and-breakfast accommodation, entertainment centres and casinos.
Percentage change	<p>When using monthly actual values, the percentage change is the change in actual values of building activities (building plans passed or buildings completed) of the relevant month compared with the actual values of building activities (building plans passed or buildings completed) of the same month in the previous year expressed as a percentage.</p> <p>When using annual actual values, the percentage change is the change in the actual values of building activities (building plans passed or buildings completed) of the relevant year compared with the actual values of building activities (building plans passed or buildings completed) of the previous year expressed as a percentage.</p> <p>When using seasonally adjusted values, the percentage change is the change in the seasonally adjusted values of building activities (building plans passed or buildings completed) of the relevant month compared with the seasonally adjusted values of building activities (building plans passed or buildings completed) of the previous month expressed as a percentage.</p>

Reference period	One calendar month.
Residential buildings	Buildings that are used primarily as residences. Includes dwelling-houses, flats, townhouses and other residential buildings.
Townhouses	Multiple, medium-density dwelling-units including cluster housing, group housing, simplexes, duplexes, triplexes and other similar dwelling-units which are usually grouped together, with one level of each unit on ground level. This category excludes blocks of flats.

Technical enquiries

Suzzie Mnguni Telephone number: (012) 310 8134
Email: suzziemn@statssa.gov.za

Nicolai Claassen Telephone number: (012) 310 8007
Email: nicolaic@statssa.gov.za

General information

Stats SA publishes approximately 300 different statistical releases each year. It is not economically viable to produce them in more than one of South Africa's eleven official languages. Since the releases are used extensively, not only locally but also by international economic and social-scientific communities, Stats SA releases are published in English.

Stats SA has copyright on this publication. Users may apply the information as they wish, provided that they acknowledge Stats SA as the source of the basic data wherever they process, apply, utilise, publish or distribute the data and also that they specify that the relevant application and analysis (where applicable) result from their own processing of the data.

Advance release calendar

An advance release calendar is disseminated on www.statssa.gov.za

Stats SA products

A complete set of Stats SA publications is available at the Stats SA Library and the following libraries:

National Library of South Africa, Pretoria Division
National Library of South Africa, Cape Town Division
Natal Society Library, Pietermaritzburg
Library of Parliament, Cape Town
Bloemfontein Public Library
Johannesburg Public Library
Eastern Cape Library Services, King William's Town
Central Regional Library, Polokwane
Central Reference Library, Mbombela
Central Reference Collection, Kimberley
Central Reference Library, Mmabatho

Stats SA also provides a subscription service.

Electronic services

A large range of data is available via online services. For more details about our electronic services, contact Stats SA's user information service at (012) 310 8600.

You can visit us on the Internet at: www.statssa.gov.za

General enquiries

User information services Telephone number: (012) 310 8600
Email address: info@statssa.gov.za

Postal address Private Bag X44, Pretoria, 0001

Produced by Stats SA