

**STATISTICAL RELEASE**  
**P5041.1**

**Selected building statistics of the private sector  
as reported by local government institutions  
(Preliminary)**

**August 2016**

**Embargoed until:  
20 October 2016  
13:00**

**ENQUIRIES:**  
Nicolai Claassen  
Tel: (012) 310 8007

**FORTHCOMING ISSUE:**  
September 2016

**EXPECTED RELEASE DATE:**  
17 November 2016

[www.statssa.gov.za](http://www.statssa.gov.za)  
[info@statssa.gov.za](mailto:info@statssa.gov.za)  
T +27 12 310 8911  
F +27 12 310 8500

Private Bag X44, Pretoria, 0001, South Africa  
ISibalo House, Koch Street, Salvokop, Pretoria, 0002

## Contents

<b>Results for January to August 2016.....</b>	<b>3</b>
<b>Tables</b>	
Table 1 Value and percentage change of recorded building plans passed by larger municipalities at current prices by type of building .....	9
Table 2 Seasonally adjusted value and percentage change of recorded building plans passed by larger municipalities at current prices by type of building .....	10
Table 3 Value and percentage change of recorded building plans passed by larger municipalities at constant 2015 prices by type of building .....	11
Table 4 Seasonally adjusted value and percentage change of recorded building plans passed by larger municipalities at constant 2015 prices by type of building .....	12
Table 5 Value and percentage change of buildings reported as completed to larger municipalities at current prices by type of building .....	13
Table 6 Seasonally adjusted value and percentage change of buildings reported as completed to larger municipalities at current prices by type of building .....	14
Table 7 Value and percentage change of buildings reported as completed to larger municipalities at constant 2015 prices by type of building .....	15
Table 8 Seasonally adjusted value and percentage change of buildings reported as completed to larger municipalities at constant 2015 prices by type of building .....	16
Table 9 Recorded building plans passed by larger municipalities at current prices by type of building: South Africa .....	17
Table 10 Recorded building plans passed by larger municipalities at current prices by type of building: Western Cape.....	18
Table 11 Recorded building plans passed by larger municipalities at current prices by type of building: Eastern Cape.....	19
Table 12 Recorded building plans passed by larger municipalities at current prices by type of building: Northern Cape .....	20
Table 13 Recorded building plans passed by larger municipalities at current prices by type of building: Free State.....	21
Table 14 Recorded building plans passed by larger municipalities at current prices by type of building: KwaZulu-Natal .....	22
Table 15 Recorded building plans passed by larger municipalities at current prices by type of building: North West.....	23
Table 16 Recorded building plans passed by larger municipalities at current prices by type of building: Gauteng.....	24
Table 17 Recorded building plans passed by larger municipalities at current prices by type of building: Mpumalanga.....	25
Table 18 Recorded building plans passed by larger municipalities at current prices by type of building: Limpopo.....	26
Table 19 Buildings reported as completed to larger municipalities at current prices by type of building: South Africa.....	27
Table 20 Buildings reported as completed to larger municipalities at current prices by type of building: Western Cape.....	28
Table 21 Buildings reported as completed to larger municipalities at current prices by type of building: Eastern Cape.....	29
Table 22 Buildings reported as completed to larger municipalities at current prices by type of building: Northern Cape .....	30
Table 23 Buildings reported as completed to larger municipalities at current prices by type of building: Free State.....	31
Table 24 Buildings reported as completed to larger municipalities at current prices by type of building: KwaZulu-Natal .....	32
Table 25 Buildings reported as completed to larger municipalities at current prices by type of building: North West.....	33

Table 26	Buildings reported as completed to larger municipalities at current prices by type of building: Gauteng.....	34
Table 27	Buildings reported as completed to larger municipalities at current prices by type of building: Mpumalanga.....	35
Table 28	Buildings reported as completed to larger municipalities at current prices by type of building: Limpopo.....	36
<b>Explanatory notes</b> .....		<b>37</b>
<b>Glossary</b> .....		<b>40</b>
<b>Technical enquiries</b> .....		<b>41</b>
<b>General information</b> .....		<b>42</b>

## Results for January to August 2016

**Table A – Recorded building plans passed by larger municipalities at current prices:  
January to August 2015 versus January to August 2016**

Estimates at current prices	January to August 2015	January to August 2016	Difference in value between January to August 2015 and January to August 2016	% change between January to August 2015 and January to August 2016
	1/ R'000	1/ R'000	R'000	
<b>Residential buildings</b>	<b>33 114 117</b>	<b>34 246 027</b>	<b>1 131 910</b>	<b>3,4</b>
-Dwelling-houses	22 314 446	21 722 217	-592 229	-2,7
-Flats and townhouses	10 047 306	11 262 544	1 215 238	12,1
-Other residential buildings	752 365	1 261 266	508 901	67,6
<b>Non-residential buildings</b>	<b>18 219 333</b>	<b>16 838 236</b>	<b>-1 381 097</b>	<b>-7,6</b>
<b>Additions and alterations</b>	<b>17 569 134</b>	<b>17 448 146</b>	<b>-120 988</b>	<b>-0,7</b>
<b>Total</b>	<b>68 902 584</b>	<b>68 532 409</b>	<b>-370 175</b>	<b>-0,5</b>

1/ 2015 and 2016 figures should be regarded as preliminary because of possible backlogs and incomplete reporting by municipalities.

### Total value of recorded building plans passed at current prices

The value of recorded building plans passed (at current prices) decreased by 0,5% (-R370,2 million) during January to August 2016 compared with January to August 2015.

Non-residential buildings fell by 7,6% (-R1 381,1 million), while residential buildings rose by 3,4% (R1 131,9 million) – see Table A.

**Table B – Recorded building plans passed by larger municipalities aggregated to provincial level:  
January to August 2015 versus January to August 2016**

Estimates at current prices	January to August 2015	January to August 2016	% contribution to the total value of building plans passed during January to August 2015	% change between January to August 2015 and January to August 2016	Contribution (% points) to the % change in the value of building plans passed between January to August 2015 and January to August 2016	Difference in value between January to August 2015 and January to August 2016
	1/ R'000	1/ R'000				
Western Cape	16 873 028	17 958 237	24,5	6,4	1,6	1 085 209
Eastern Cape	3 521 405	2 821 451	5,1	-19,9	-1,0	-699 954
Northern Cape	422 375	651 811	0,6	54,3	0,3	229 436
Free State	2 648 195	2 270 539	3,8	-14,3	-0,5	-377 656
KwaZulu-Natal	11 579 847	13 130 726	16,8	13,4	2,3	1 550 879
North West	2 266 604	1 854 845	3,3	-18,2	-0,6	-411 759
Gauteng	27 194 178	25 967 909	39,5	-4,5	-1,8	-1 226 269
Mpumalanga	2 992 242	2 734 007	4,3	-8,6	-0,4	-258 235
Limpopo	1 404 710	1 142 884	2,0	-18,6	-0,4	-261 826
<b>Total</b>	<b>68 902 584</b>	<b>68 532 409</b>	<b>100,0</b>	<b>-0,5</b>	<b>-0,5</b>	<b>-370 175</b>

1/ 2015 and 2016 figures should be regarded as preliminary because of possible backlogs and incomplete reporting by municipalities.

2/ The contribution (percentage points) is calculated by multiplying the percentage change of each province between January to August 2015 and January to August 2016 with the percentage contribution of the corresponding province to the total value of building plans passed during January to August 2015, divided by 100.

Six provinces reported decreases for January to August 2016 compared with January to August 2015. The largest negative contribution to the total decrease of 0,5% (-R370,2 million) was made by Gauteng (contributing -1,8 percentage points or -R1 226,3 million). The largest positive contribution was made by KwaZulu-Natal (contributing 2,3 percentage points or R1 550,9 million) – see Table B.

**Table C – Recorded building plans passed by larger municipalities at constant 2015 prices: January to August 2015 versus January to August 2016**

Estimates at constant 2015 prices	January to August 2015	January to August 2016	Difference in value between January to August 2015 and January to August 2016	% change between January to August 2015 and January to August 2016
	1/	1/		
	R'000	R'000	R'000	
Residential buildings	33 226 422	32 456 325	-770 097	-2,3
Non-residential buildings	18 250 432	16 042 537	-2 207 895	-12,1
Additions and alterations	17 629 656	16 523 390	-1 106 266	-6,3
<b>Total</b>	<b>69 106 510</b>	<b>65 022 252</b>	<b>-4 084 258</b>	<b>-5,9</b>

1/ 2015 and 2016 figures should be regarded as preliminary because of possible backlogs and incomplete reporting by municipalities.

### Real value of recorded building plans passed

The real value of recorded building plans passed (at constant 2015 prices) decreased by 5,9% (-R4 084,3 million) year-on-year during January to August 2016. All three major building categories recorded decreases. The largest decrease was recorded for non-residential buildings (-12,1% or -R2 207,9 million), followed by additions and alterations (-6,3% or -R1 106,3 million) and residential buildings (-2,3% or -R770,1 million) – see Table C.

**Table D – Seasonally adjusted three-monthly key figures regarding recorded building plans passed by larger municipalities at constant 2015 prices**

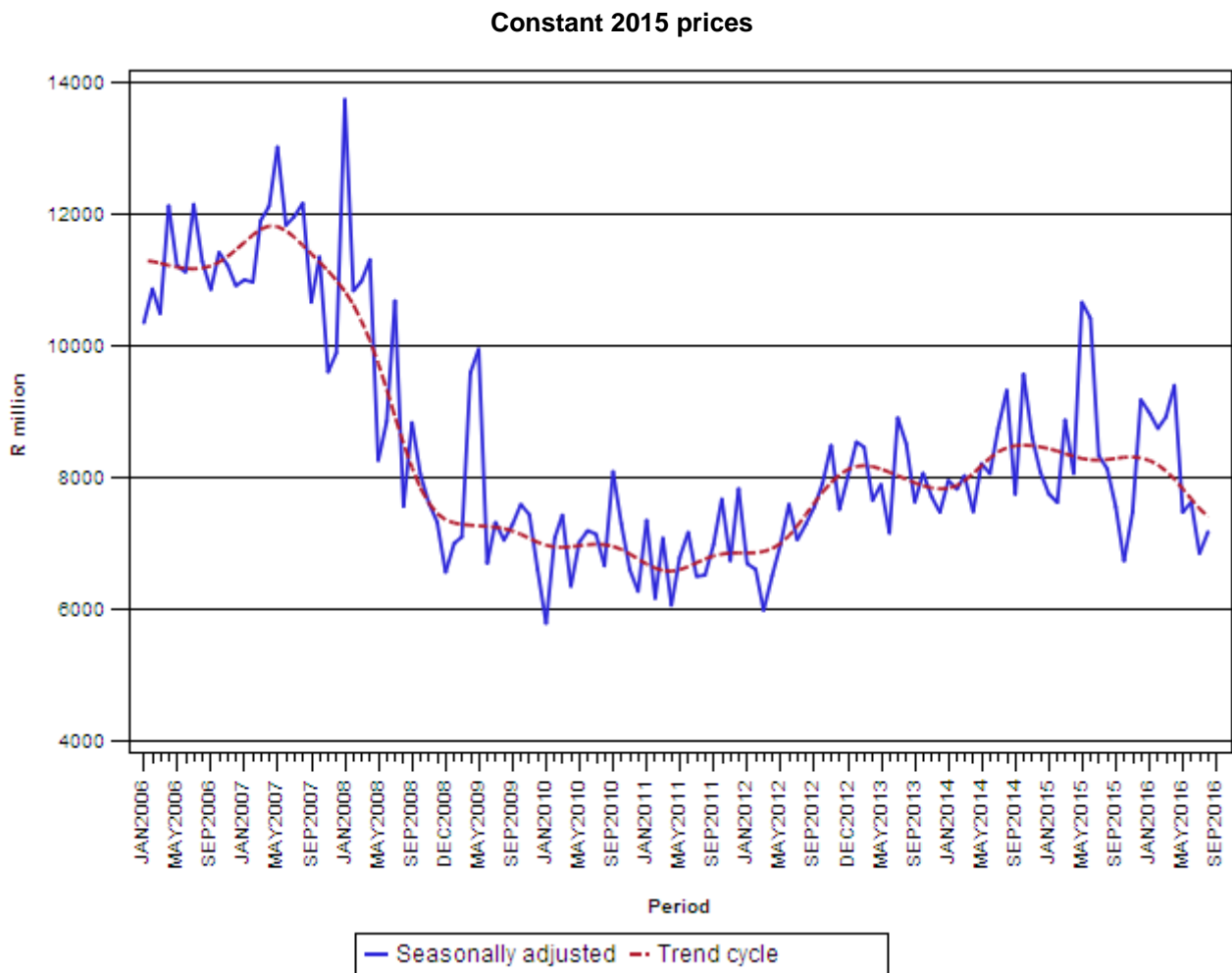
Seasonally adjusted estimates at constant 2015 prices	March to May 2016	June to August 2016	% change between March to May 2016 and June to August 2016
	R'000	R'000	
Residential buildings	12 883 985	11 155 078	-13,4
Non-residential buildings 1/	6 498 685	4 214 302	-35,2
Additions and alterations	6 425 968	6 296 132	-2,0
<b>Total</b>	<b>25 808 637</b>	<b>21 665 512</b>	<b>-16,1</b>

1/ Not seasonally adjusted because the presence of seasonality is not significant. See notes 11 and 12 on page 38.

### Seasonally adjusted real value of recorded building plans passed

The seasonally adjusted real value of recorded building plans passed decreased by 16,1% in the three months ended August 2016 compared with the previous three months – see Table D.

**Figure 1 – Real value of recorded building plans passed by larger municipalities**



**Table E – Buildings reported as completed to larger municipalities at current prices:  
January to August 2015 versus January to August 2016**

Estimates at current prices	January to August 2015	January to August 2016	Difference in value between January to August 2015 and January to August 2016	% change between January to August 2015 and January to August 2016
	1/	1/		
	R'000	R'000	R'000	
<b>Residential buildings</b>	<b>20 268 359</b>	<b>20 718 294</b>	<b>449 935</b>	<b>2,2</b>
-Dwelling-houses	14 904 695	14 644 760	-259 935	-1,7
-Flats and townhouses	4 937 730	5 900 653	962 923	19,5
-Other residential buildings	425 934	172 881	-253 053	-59,4
<b>Non-residential buildings</b>	<b>7 936 841</b>	<b>11 033 506</b>	<b>3 096 665</b>	<b>39,0</b>
<b>Additions and alterations</b>	<b>6 554 797</b>	<b>6 560 778</b>	<b>5 981</b>	<b>0,1</b>
<b>Total</b>	<b>34 759 997</b>	<b>38 312 578</b>	<b>3 552 581</b>	<b>10,2</b>

1/ 2015 and 2016 figures should be regarded as preliminary because of possible backlogs and incomplete reporting by municipalities.

### Total value of buildings reported as completed at current prices

The value of buildings reported as completed (at current prices) increased by 10,2% (R3 552,6 million) during January to August 2016 compared with January to August 2015. Non-residential buildings rose by 39,0% (R3 096,7 million) – see Table E. There were large year-on-year increases in completions of non-residential buildings in KwaZulu-Natal (R2 006,1 million) and Gauteng (R1 479,3 million) – see Tables 24 and 26, pages 32 and 34.

**Table F – Buildings reported as completed to larger municipalities aggregated to provincial level:  
January to August 2015 versus January to August 2016**

Estimates at current prices	January to August 2015	January to August 2016	% contribution to the total value of buildings completed during January to August 2015	% change between January to August 2015 and January to August 2016	Contribution (% points) to the % change in the value of buildings completed between January to August 2015 and January to August 2016	Difference in value between January to August 2015 and January to August 2016
	1/	1/				
	R'000	R'000			2/	R'000
Western Cape	9 822 042	10 239 259	28,3	4,2	1,2	417 217
Eastern Cape	1 339 966	844 540	3,9	-37,0	-1,4	-495 426
Northern Cape	327 880	343 005	0,9	4,6	0,0	15 125
Free State	826 632	1 173 588	2,4	42,0	1,0	346 956
KwaZulu-Natal	4 869 174	6 582 131	14,0	35,2	4,9	1 712 957
North West	1 363 322	1 492 107	3,9	9,4	0,4	128 785
Gauteng	14 296 873	15 919 383	41,1	11,3	4,7	1 622 510
Mpumalanga	1 446 627	1 282 972	4,2	-11,3	-0,5	-163 655
Limpopo	467 481	435 593	1,3	-6,8	-0,1	-31 888
<b>Total</b>	<b>34 759 997</b>	<b>38 312 578</b>	<b>100,0</b>	<b>10,2</b>	<b>10,2</b>	<b>3 552 581</b>

1/ 2015 and 2016 figures should be regarded as preliminary because of possible backlogs and incomplete reporting by municipalities.

2/ The contribution (percentage points) is calculated by multiplying the percentage change of each province between January to August 2015 and January to August 2016 with the percentage contribution of the corresponding province to the total value of buildings completed during January to August 2015, divided by 100.

Six provinces reported year-on-year increases in the value of buildings completed during January to August 2016. The largest contributions were recorded for KwaZulu-Natal (contributing 4,9 percentage points or R1 713,0 million) and Gauteng (contributing 4,7 percentage points or R1 622,5 million) – see Table F.

**Table G – Buildings reported as completed to larger municipalities at constant 2015 prices:  
January to August 2015 versus January to August 2016**

Estimates at constant 2015 prices	January to August 2015	January to August 2016	Difference in value between January to August 2015 and January to August 2016	% change between January to August 2015 and January to August 2016
	1/	1/	R'000	
	R'000	R'000	R'000	
Residential buildings	20 330 478	19 642 994	-687 484	-3,4
Non-residential buildings	7 961 390	10 450 935	2 489 545	31,3
Additions and alterations	6 575 482	6 221 835	-353 647	-5,4
<b>Total</b>	<b>34 867 350</b>	<b>36 315 764</b>	<b>1 448 414</b>	<b>4,2</b>

1/ 2015 and 2016 figures should be regarded as preliminary because of possible backlogs and incomplete reporting by municipalities.

### Real value of buildings reported as completed

The real value of buildings reported as completed (at constant 2015 prices) increased by 4,2% (R1 448,4 million) year-on-year during January to August 2016. Non-residential buildings rose by 31,3% (R2 489,5 million) – see Table G. There were large year-on-year increases in completions of non-residential buildings in KwaZulu-Natal and Gauteng – see Tables 24 and 26, pages 32 and 34.

**Table H – Seasonally adjusted three-monthly key figures regarding buildings reported as completed to larger municipalities at constant 2015 prices**

Seasonally adjusted estimates at constant 2015 prices	March to May 2016	June to August 2016	% change between March to May 2016 and June to August 2016
	R'000	R'000	
Residential buildings	7 904 836	7 470 858	-5,5
Non-residential buildings 1/	5 457 519	3 439 963	-37,0
Additions and alterations	2 351 460	2 210 217	-6,0
<b>Total</b>	<b>15 713 816</b>	<b>13 121 039</b>	<b>-16,5</b>

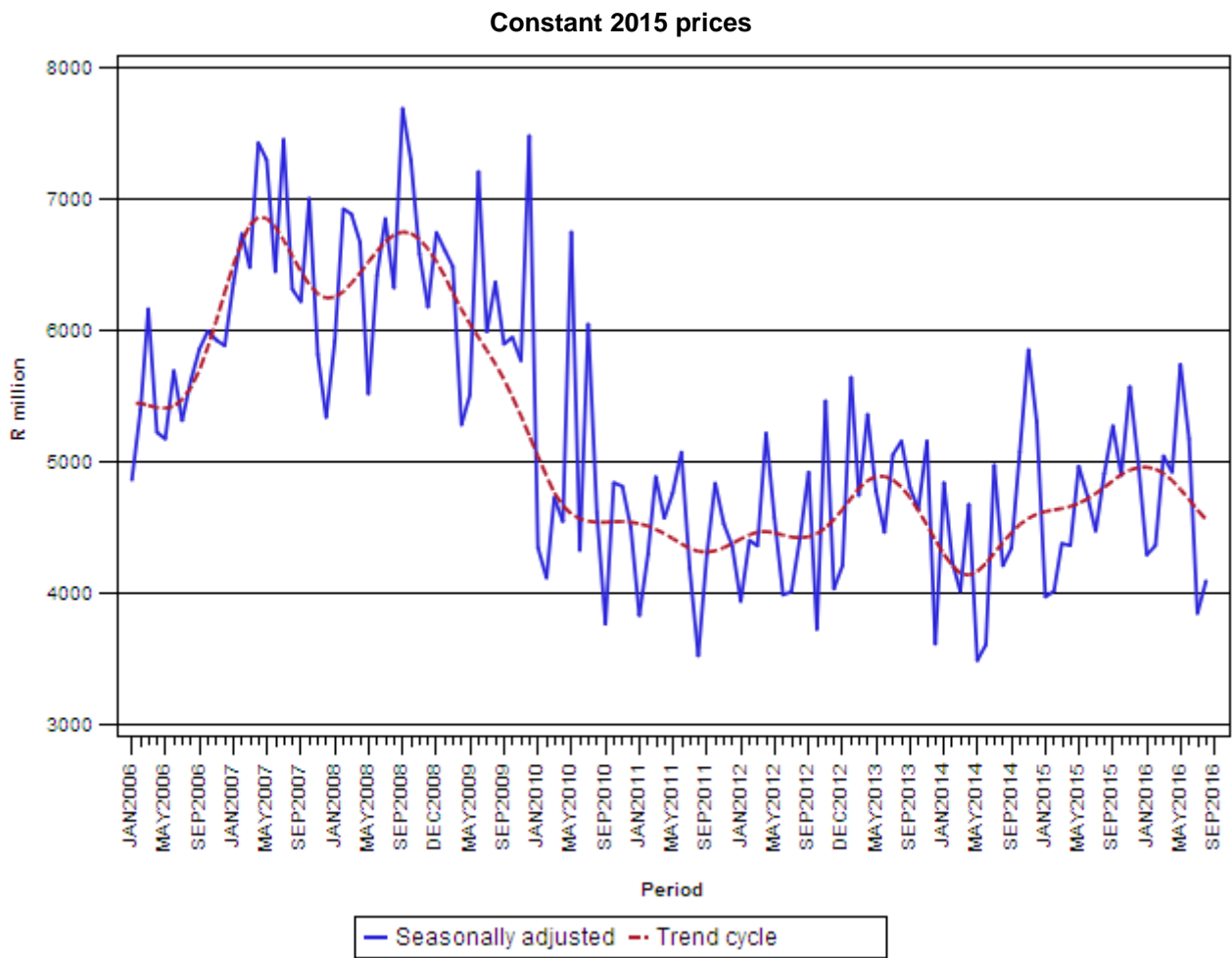
1/ Not seasonally adjusted because the presence of seasonality is not significant. See notes 11 and 12 on page 38.

### Seasonally adjusted real value of buildings reported as completed

The seasonally adjusted real value of buildings reported as completed decreased by 16,5% in the three months ended August 2016 compared with the previous three months. Non-residential buildings fell by 37,0% – see Table H.



**Figure 2 – Real value of buildings reported as completed to larger municipalities**



**PJ Lehohla**  
**Statistician-General**

**Table 1 – Value and percentage change of recorded building plans passed by larger municipalities at current prices by type of building**

Year and month 2/		Residential buildings		Non-residential buildings		Additions and alterations		Total	
		R'000	% change 1/	R'000	% change 1/	R'000	% change 1/	R'000	% change 1/
2015	January	3 411 357	5,4	687 316	-48,9	1 669 101	8,7	5 767 774	-5,7
	February	3 825 309	17,1	1 310 712	-36,2	2 328 241	13,2	7 464 262	1,2
	March	4 171 252	20,3	2 150 503	-5,5	2 254 077	15,4	8 575 832	11,4
	April	4 231 730	38,5	1 939 405	12,3	1 979 962	0,2	8 151 097	20,6
	May	4 217 439	2,6	4 243 106	115,3	2 175 725	13,7	10 636 270	33,0
	June	4 515 235	15,4	3 972 054	95,3	2 213 891	15,4	10 701 180	36,1
	July	4 486 702	11,4	2 066 047	-31,6	2 655 555	15,4	9 208 304	-1,5
	August	4 255 093	-10,7	1 850 190	-15,5	2 292 582	-11,7	8 397 865	-12,0
	September	4 701 995	12,3	1 509 865	16,7	2 248 552	-14,2	8 460 412	4,4
	October	3 909 559	-25,7	1 126 314	-63,2	2 306 634	-0,9	7 342 507	-31,1
	November	4 285 873	3,3	1 277 790	-39,5	2 138 157	-6,2	7 701 820	-9,8
	December	3 715 285	25,7	2 006 222	7,1	2 171 504	15,7	7 893 011	17,7
	<b>Total</b>	<b>49 726 829</b>	<b>7,2</b>	<b>24 139 524</b>	<b>-3,3</b>	<b>26 433 981</b>	<b>4,2</b>	<b>100 300 334</b>	<b>3,7</b>
2016	January	2 849 293	-16,5	3 244 246	372,0	1 451 533	-13,0	7 545 072	30,8
	February	4 592 411	20,1	2 247 812	71,5	2 125 304	-8,7	8 965 527	20,1
	March	4 537 940	8,8	2 515 020	17,0	2 056 047	-8,8	9 109 007	6,2
	April	5 000 890	18,2	2 739 501	41,3	2 373 049	19,9	10 113 440	24,1
	May	4 208 361	-0,2	1 580 343	-62,8	2 241 429	3,0	8 030 133	-24,5
	June	4 978 546	10,3	1 381 030	-65,2	2 415 528	9,1	8 775 104	-18,0
	July	3 744 484	-16,5	1 334 132	-35,4	2 498 275	-5,9	7 576 891	-17,7
	August	4 334 102	1,9	1 796 152	-2,9	2 286 981	-0,2	8 417 235	0,2

1/ The percentage change is the change in the value of recorded building plans passed by municipalities of the relevant year/month compared with the value of recorded building plans passed by municipalities of the comparable period of the previous year expressed as a percentage.

2/ Preliminary figures.

**Table 2 – Seasonally adjusted value and percentage change of recorded building plans passed by larger municipalities at current prices by type of building**

Year and month		Residential buildings		Non-residential buildings 3/		Additions and alterations		Total	
		R'000	% change 1/	R'000	% change 1/	R'000	% change 1/	R'000	% change 1/
2015	January	4 705 322	20,7	687 316	-63,3	2 331 701	4,4	7 724 340	-3,5
	February	4 117 759	-12,5	1 310 712	90,7	2 327 034	-0,2	7 755 504	0,4
	March	4 323 544	5,0	2 150 503	64,1	2 407 237	3,4	8 881 284	14,5
	April	4 145 410	-4,1	1 939 405	-9,8	1 919 513	-20,3	8 004 328	-9,9
	May	4 136 822	-0,2	4 243 106	118,8	2 319 726	20,8	10 699 654	33,7
	June	4 237 436	2,4	3 972 054	-6,4	2 185 571	-5,8	10 395 060	-2,8
	July	4 035 988	-4,8	2 066 047	-48,0	2 299 522	5,2	8 401 556	-19,2
	August	4 148 002	2,8	1 850 190	-10,4	2 202 504	-4,2	8 200 696	-2,4
	September	4 230 554	2,0	1 509 865	-18,4	1 874 114	-14,9	7 614 533	-7,1
	October	3 438 868	-18,7	1 126 314	-25,4	2 184 860	16,6	6 750 042	-11,4
	November	4 437 751	29,0	1 277 790	13,4	1 987 264	-9,0	7 702 805	14,1
	December	4 801 368	8,2	2 006 222	57,0	2 597 577	30,7	9 405 167	22,1
2016	January	3 960 413	-17,5	3 244 246	61,7	2 090 260	-19,5	9 294 919	-1,2
	February	4 358 185	10,0	2 247 812	-30,7	2 107 685	0,8	8 713 682	-6,3
	March	4 585 013	5,2	2 515 020	11,9	2 176 778	3,3	9 276 811	6,5
	April	4 847 744	5,7	2 739 501	8,9	2 311 837	6,2	9 899 082	6,7
	May	4 104 514	-15,3	1 580 343	-42,3	2 257 565	-2,3	7 942 422	-19,8
	June	4 444 031	8,3	1 381 030	-12,6	2 406 916	6,6	8 231 978	3,6
	July	3 647 215	-17,9	1 334 132	-3,4	2 324 088	-3,4	7 305 435	-11,3
	August	3 907 878	7,1	1 796 152	34,6	1 978 636	-14,9	7 682 666	5,2
	<b>Mar. – May 16</b>	<b>13 537 271</b>		<b>6 834 864</b>		<b>6 746 180</b>		<b>27 118 315</b>	
	<b>Jun. – Aug. 16 2/</b>	<b>11 999 124</b>	<b>-11,4</b>	<b>4 511 314</b>	<b>-34,0</b>	<b>6 709 640</b>	<b>-0,5</b>	<b>23 220 079</b>	<b>-14,4</b>

1/ The percentage change is the change in the seasonally adjusted value of recorded building plans passed by municipalities of the relevant month compared with the seasonally adjusted value of recorded building plans passed by municipalities of the previous month expressed as a percentage.

2/ The percentage change is the change in the seasonally adjusted value of recorded building plans passed by municipalities for the latest three months compared with the seasonally adjusted value of recorded building plans passed by municipalities of the previous three months expressed as a percentage.

3/ Not seasonally adjusted because the presence of seasonality is not significant. See notes 11 and 12 on page 38.

**Table 3 – Value and percentage change of recorded building plans passed by larger municipalities at constant 2015 prices by type of building**

Year and month 2/		Residential buildings		Non-residential buildings		Additions and alterations		Total	
		R'000	% change 1/	R'000	% change 1/	R'000	% change 1/	R'000	% change 1/
2015	January	3 459 794	-0,1	697 075	-51,6	1 692 800	3,0	5 849 669	-10,7
	February	3 887 509	12,8	1 332 024	-38,5	2 366 099	9,1	7 585 632	-2,5
	March	4 213 386	16,4	2 172 225	-8,5	2 276 845	11,7	8 662 456	7,8
	April	4 244 463	33,1	1 945 241	7,9	1 985 920	-3,8	8 175 624	15,9
	May	4 221 661	-1,3	4 247 353	107,2	2 177 903	9,4	10 646 917	28,0
	June	4 501 730	11,2	3 960 173	88,1	2 207 269	11,2	10 669 172	31,1
	July	4 455 513	7,7	2 051 685	-33,8	2 637 095	11,7	9 144 293	-4,7
	August	4 242 366	-12,9	1 844 656	-17,6	2 285 725	-13,9	8 372 747	-14,2
	September	4 692 610	9,7	1 506 851	14,0	2 244 064	-16,2	8 443 525	2,0
	October	3 874 687	-27,6	1 116 268	-64,1	2 286 059	-3,5	7 277 014	-32,8
	November	4 243 439	0,4	1 265 139	-41,2	2 116 987	-8,8	7 625 565	-12,3
	December	3 678 500	22,2	1 986 358	4,1	2 150 004	12,4	7 814 862	14,4
	<b>Total</b>	<b>49 715 658</b>	<b>3,7</b>	<b>24 125 048</b>	<b>-6,4</b>	<b>26 426 770</b>	<b>0,9</b>	<b>100 267 476</b>	<b>0,4</b>
2016	January	2 787 958	-19,4	3 174 409	355,4	1 420 287	-16,1	7 382 654	26,2
	February	4 403 079	13,3	2 155 141	61,8	2 037 684	-13,9	8 595 904	13,3
	March	4 338 375	3,0	2 404 417	10,7	1 965 628	-13,7	8 708 420	0,5
	April	4 744 677	11,8	2 599 147	33,6	2 251 470	13,4	9 595 294	17,4
	May	3 981 420	-5,7	1 495 121	-64,8	2 120 557	-2,6	7 597 098	-28,6
	June	4 661 560	3,6	1 293 099	-67,3	2 261 730	2,5	8 216 389	-23,0
	July	3 496 250	-21,5	1 245 688	-39,3	2 332 656	-11,5	7 074 594	-22,6
	August	4 043 006	-4,7	1 675 515	-9,2	2 133 378	-6,7	7 851 899	-6,2

1/ The percentage change is the change in the value of recorded building plans passed by municipalities of the relevant year/month compared with the value of recorded building plans passed by municipalities of the comparable period of the previous year expressed as a percentage.

2/ Preliminary figures.

**Table 4 – Seasonally adjusted value and percentage change of recorded building plans passed by larger municipalities at constant 2015 prices by type of building**

Year and month		Residential buildings		Non-residential buildings 3/		Additions and alterations		Total	
		R'000	% change 1/	R'000	% change 1/	R'000	% change 1/	R'000	% change 1/
2015	January	4 706 706	19,9	697 075	-63,5	2 352 710	4,2	7 756 491	-4,1
	February	3 927 937	-16,5	1 332 024	91,1	2 366 726	0,6	7 626 686	-1,7
	March	4 274 668	8,8	2 172 225	63,1	2 435 454	2,9	8 882 346	16,5
	April	4 187 828	-2,0	1 945 241	-10,4	1 934 141	-20,6	8 067 210	-9,2
	May	4 095 142	-2,2	4 247 353	118,3	2 325 487	20,2	10 667 982	32,2
	June	4 281 574	4,6	3 960 173	-6,8	2 182 038	-6,2	10 423 785	-2,3
	July	3 993 023	-6,7	2 051 685	-48,2	2 294 563	5,2	8 339 271	-20,0
	August	4 092 819	2,5	1 844 656	-10,1	2 201 130	-4,1	8 138 606	-2,4
	September	4 179 157	2,1	1 506 851	-18,3	1 874 899	-14,8	7 560 907	-7,1
	October	3 457 774	-17,3	1 116 268	-25,9	2 164 328	15,4	6 738 370	-10,9
	November	4 271 494	23,5	1 265 139	13,3	1 946 282	-10,1	7 482 914	11,0
	December	4 645 866	8,8	1 986 358	57,0	2 556 862	31,4	9 189 086	22,8
2016	January	3 778 583	-18,7	3 174 409	59,8	2 037 242	-20,3	8 990 234	-2,2
	February	4 576 728	21,1	2 155 141	-32,1	2 018 213	-0,9	8 750 083	-2,7
	March	4 435 556	-3,1	2 404 417	11,6	2 085 106	3,3	8 925 079	2,0
	April	4 601 078	3,7	2 599 147	8,1	2 203 907	5,7	9 404 132	5,4
	May	3 847 351	-16,4	1 495 121	-42,5	2 136 955	-3,0	7 479 426	-20,5
	June	4 077 403	6,0	1 293 099	-13,5	2 263 208	5,9	7 633 709	2,1
	July	3 427 554	-15,9	1 245 688	-3,7	2 179 781	-3,7	6 853 023	-10,2
	August	3 650 121	6,5	1 675 515	34,5	1 853 143	-15,0	7 178 780	4,8
	<b>Mar. – May 16</b>	<b>12 883 985</b>		<b>6 498 685</b>		<b>6 425 968</b>		<b>25 808 637</b>	
	<b>Jun. – Aug. 16 2/</b>	<b>11 155 078</b>	<b>-13,4</b>	<b>4 214 302</b>	<b>-35,2</b>	<b>6 296 132</b>	<b>-2,0</b>	<b>21 665 512</b>	<b>-16,1</b>

1/ The percentage change is the change in the seasonally adjusted value of recorded building plans passed by municipalities of the relevant month compared with the seasonally adjusted value of recorded building plans passed by municipalities of the previous month expressed as a percentage.

2/ The percentage change is the change in the seasonally adjusted value of recorded building plans passed by municipalities for the latest three months compared with the seasonally adjusted value of recorded building plans passed by municipalities of the previous three months expressed as a percentage.

3/ Not seasonally adjusted because the presence of seasonality is not significant. See notes 11 and 12 on page 38.

**Table 5 – Value and percentage change of buildings reported as completed to larger municipalities at current prices by type of building**

Year and month 2/		Residential buildings		Non-residential buildings		Additions and alterations		Total	
		R'000	% change 1/	R'000	% change 1/	R'000	% change 1/	R'000	% change 1/
2015	January	1 818 640	-2,5	785 616	-17,1	501 685	-35,0	3 105 941	-13,4
	February	2 087 746	9,8	1 019 816	-0,5	675 990	-29,4	3 783 552	-2,6
	March	2 568 046	15,4	858 760	-23,1	1 025 680	29,2	4 452 486	7,6
	April	2 608 404	16,7	730 600	-42,9	903 209	43,4	4 242 213	2,3
	May	3 119 539	67,9	968 348	45,1	797 255	4,0	4 885 142	48,4
	June	2 599 782	33,2	1 057 013	32,2	983 921	50,9	4 640 716	36,3
	July	2 635 346	4,5	1 095 693	-33,7	852 594	12,3	4 583 633	-7,1
	August	2 830 856	18,9	1 420 995	50,9	814 463	-13,1	5 066 314	18,9
	September	3 001 813	18,0	1 646 976	54,1	843 852	5,6	5 492 641	24,5
	October	2 688 004	-6,8	1 693 843	18,8	766 090	-14,9	5 147 937	-1,2
	November	3 436 641	11,9	1 971 370	-22,7	871 502	21,2	6 279 513	-1,0
	December	2 797 120	11,8	1 449 198	-28,3	764 722	10,9	5 011 040	-3,9
	<b>Total</b>	<b>32 191 937</b>	<b>15,2</b>	<b>14 698 228</b>	<b>-5,2</b>	<b>9 800 963</b>	<b>4,5</b>	<b>56 691 128</b>	<b>7,3</b>
2016	January	2 208 305	21,4	578 503	-26,4	651 330	29,8	3 438 138	10,7
	February	2 459 034	17,8	1 029 861	1,0	869 860	28,7	4 358 755	15,2
	March	2 523 781	-1,7	1 810 745	110,9	878 230	-14,4	5 212 756	17,1
	April	2 316 846	-11,2	2 113 528	189,3	822 389	-8,9	5 252 763	23,8
	May	3 275 280	5,0	1 819 266	87,9	913 420	14,6	6 007 966	23,0
	June	3 105 362	19,4	1 325 164	25,4	930 103	-5,5	5 360 629	15,5
	July	2 329 847	-11,6	1 150 587	5,0	705 225	-17,3	4 185 659	-8,7
	August	2 499 839	-11,7	1 205 852	-15,1	790 221	-3,0	4 495 912	-11,3

1/ The percentage change is the change in the value of buildings reported as completed to municipalities of the relevant year/month compared with the value of buildings reported as completed to municipalities of the comparable period of the previous year expressed as a percentage.

2/ Preliminary figures.

**Table 6 – Seasonally adjusted value and percentage change of buildings reported as completed to larger municipalities at current prices by type of building**

Year and month		Residential buildings		Non-residential buildings 3/		Additions and alterations		Total	
		R'000	% change 1/	R'000	% change 1/	R'000	% change 1/	R'000	% change 1/
2015	January	2 492 087	4,8	785 616	-61,1	659 998	-21,1	3 937 701	-24,8
	February	2 314 886	-7,1	1 019 816	29,8	620 906	-5,9	3 955 608	0,5
	March	2 576 443	11,3	858 760	-15,8	893 928	44,0	4 329 131	9,4
	April	2 740 414	6,4	730 600	-14,9	862 127	-3,6	4 333 141	0,1
	May	3 172 956	15,8	968 348	32,5	808 044	-6,3	4 949 347	14,2
	June	2 755 411	-13,2	1 057 013	9,2	937 276	16,0	4 749 700	-4,0
	July	2 528 208	-8,2	1 095 693	3,7	865 141	-7,7	4 489 043	-5,5
	August	2 731 850	8,1	1 420 995	29,7	766 547	-11,4	4 919 393	9,6
	September	2 808 612	2,8	1 646 976	15,9	835 707	9,0	5 291 295	7,6
	October	2 494 338	-11,2	1 693 843	2,8	762 521	-8,8	4 950 702	-6,4
	November	2 816 900	12,9	1 971 370	16,4	861 152	12,9	5 649 423	14,1
	December	2 700 676	-4,1	1 449 198	-26,5	930 390	8,0	5 080 263	-10,1
2016	January	2 980 587	10,4	578 503	-60,1	851 349	-8,5	4 410 439	-13,2
	February	2 726 331	-8,5	1 029 861	78,0	796 436	-6,5	4 552 628	3,2
	March	2 649 675	-2,8	1 810 745	75,8	816 111	2,5	5 276 532	15,9
	April	2 316 834	-12,6	2 113 528	16,7	735 032	-9,9	5 165 394	-2,1
	May	3 317 817	43,2	1 819 266	-13,9	917 496	24,8	6 054 579	17,2
	June	3 306 066	-0,4	1 325 164	-27,2	886 353	-3,4	5 517 583	-8,9
	July	2 240 733	-32,2	1 150 587	-13,2	716 838	-19,1	4 108 159	-25,5
	August	2 427 276	8,3	1 205 852	4,8	750 518	4,7	4 383 646	6,7
	<b>Mar. – May 16</b>	<b>8 284 326</b>		<b>5 743 539</b>		<b>2 468 639</b>		<b>16 496 505</b>	
	<b>Jun. – Aug. 16 2/</b>	<b>7 974 075</b>	<b>-3,7</b>	<b>3 681 603</b>	<b>-35,9</b>	<b>2 353 709</b>	<b>-4,7</b>	<b>14 009 388</b>	<b>-15,1</b>

1/ The percentage change is the change in the seasonally adjusted value of buildings reported as completed to municipalities of the relevant month compared with the seasonally adjusted value of buildings reported as completed to municipalities of the previous month expressed as a percentage.

2/ The percentage change is the change in the seasonally adjusted value of buildings reported as completed to municipalities for the latest three months compared with the seasonally adjusted value of buildings reported as completed to municipalities of the previous three months expressed as a percentage.

3/ Not seasonally adjusted because the presence of seasonality is not significant. See notes 11 and 12 on page 38.

**Table 7 – Value and percentage change of buildings reported as completed to larger municipalities at constant 2015 prices by type of building**

Year and month 2/		Residential buildings		Non-residential buildings		Additions and alterations		Total	
		R'000	% change 1/	R'000	% change 1/	R'000	% change 1/	R'000	% change 1/
2015	January	1 844 462	-7,6	796 771	-21,5	508 808	-38,4	3 150 041	-17,9
	February	2 121 693	5,8	1 036 398	-4,1	686 982	-32,0	3 845 073	-6,1
	March	2 593 986	11,7	867 434	-25,6	1 036 040	25,1	4 497 460	4,2
	April	2 616 253	12,1	732 798	-45,1	905 927	37,8	4 254 978	-1,7
	May	3 122 662	61,5	969 317	39,6	798 053	0,0	4 890 032	42,7
	June	2 592 006	28,3	1 053 851	27,3	980 978	45,4	4 626 835	31,3
	July	2 617 027	1,1	1 088 076	-35,9	846 667	8,7	4 551 770	-10,2
	August	2 822 389	15,9	1 416 745	47,1	812 027	-15,2	5 051 161	16,0
	September	2 995 821	15,3	1 643 689	50,6	842 168	3,1	5 481 678	21,6
	October	2 664 028	-9,2	1 678 734	15,7	759 257	-17,0	5 102 019	-3,7
	November	3 402 615	8,8	1 951 851	-24,8	862 873	17,9	6 217 339	-3,7
	December	2 769 426	8,7	1 434 850	-30,3	757 150	7,8	4 961 426	-6,5
	<b>Total</b>	<b>32 162 368</b>	<b>11,5</b>	<b>14 670 514</b>	<b>-8,2</b>	<b>9 796 930</b>	<b>1,0</b>	<b>56 629 812</b>	<b>3,9</b>
2016	January	2 160 768	17,1	566 050	-29,0	637 309	25,3	3 364 127	6,8
	February	2 357 655	11,1	987 403	-4,7	833 998	21,4	4 179 056	8,7
	March	2 412 793	-7,0	1 731 114	99,6	839 608	-19,0	4 983 515	10,8
	April	2 198 146	-16,0	2 005 245	173,6	780 255	-13,9	4 983 646	17,1
	May	3 098 657	-0,8	1 721 160	77,6	864 163	8,3	5 683 980	16,2
	June	2 907 642	12,2	1 240 790	17,7	870 883	-11,2	5 019 315	8,5
	July	2 175 394	-16,9	1 074 311	-1,3	658 473	-22,2	3 908 178	-14,1
	August	2 331 939	-17,4	1 124 862	-20,6	737 146	-9,2	4 193 947	-17,0

1/ The percentage change is the change in the value of buildings reported as completed to municipalities of the relevant year/month compared with the value of buildings reported as completed to municipalities of the comparable period of the previous year expressed as a percentage.

2/ Preliminary figures.



**Table 8 – Seasonally adjusted value and percentage change of buildings reported as completed to larger municipalities at constant 2015 prices by type of building**

Year and month		Residential buildings		Non-residential buildings 3/		Additions and alterations		Total	
		R'000	% change 1/	R'000	% change 1/	R'000	% change 1/	R'000	% change 1/
2015	January	2 515 029	4,7	796 771	-61,3	663 183	-21,5	3 974 984	-25,1
	February	2 350 812	-6,5	1 036 398	30,1	632 309	-4,7	4 019 519	1,1
	March	2 608 339	11,0	867 434	-16,3	904 457	43,0	4 380 231	9,0
	April	2 765 776	6,0	732 798	-15,5	868 353	-4,0	4 366 926	-0,3
	May	3 189 204	15,3	969 317	32,3	810 353	-6,7	4 968 873	13,8
	June	2 751 723	-13,7	1 053 851	8,7	940 655	16,1	4 746 229	-4,5
	July	2 523 465	-8,3	1 088 076	3,2	863 380	-8,2	4 474 920	-5,7
	August	2 729 157	8,2	1 416 745	30,2	766 298	-11,2	4 912 200	9,8
	September	2 799 602	2,6	1 643 689	16,0	833 400	8,8	5 276 691	7,4
	October	2 467 788	-11,9	1 678 734	2,1	751 880	-9,8	4 898 402	-7,2
	November	2 775 829	12,5	1 951 851	16,3	847 532	12,7	5 575 212	13,8
	December	2 652 776	-4,4	1 434 850	-26,5	913 511	7,8	5 001 137	-10,3
2016	January	2 902 132	9,4	566 050	-60,5	825 838	-9,6	4 294 020	-14,1
	February	2 612 523	-10,0	987 403	74,4	765 584	-7,3	4 365 510	1,7
	March	2 535 238	-3,0	1 731 114	75,3	780 608	2,0	5 046 960	15,6
	April	2 216 478	-12,6	2 005 245	15,8	701 119	-10,2	4 922 842	-2,5
	May	3 153 120	42,3	1 721 160	-14,2	869 733	24,0	5 744 014	16,7
	June	3 100 130	-1,7	1 240 790	-27,9	835 780	-3,9	5 176 701	-9,9
	July	2 102 697	-32,2	1 074 311	-13,4	672 550	-19,5	3 849 558	-25,6
	August	2 268 031	7,9	1 124 862	4,7	701 887	4,4	4 094 780	6,4
	<b>Mar. – May 16</b>	<b>7 904 836</b>		<b>5 457 519</b>		<b>2 351 460</b>		<b>15 713 816</b>	
	<b>Jun. – Aug. 16 2/</b>	<b>7 470 858</b>	<b>-5,5</b>	<b>3 439 963</b>	<b>-37,0</b>	<b>2 210 217</b>	<b>-6,0</b>	<b>13 121 039</b>	<b>-16,5</b>

1/ The percentage change is the change in the seasonally adjusted value of buildings reported as completed to municipalities of the relevant month compared with the seasonally adjusted value of buildings reported as completed to municipalities of the previous month expressed as a percentage.

2/ The percentage change is the change in the seasonally adjusted value of buildings reported as completed to municipalities for the latest three months compared with the seasonally adjusted value of buildings reported as completed to municipalities of the previous three months expressed as a percentage.

3/ Not seasonally adjusted because the presence of seasonality is not significant. See notes 11 and 12 on page 38.

**Table 9 – Recorded building plans passed by larger municipalities at current prices by type of building: South Africa**

			Aug. 2015	Jul. 2016	Aug. 2016	Jan. - Aug. 2015	Jan. - Aug. 2016	% change 1/
Category of building	Type of building	Measuring unit						
Residential buildings	Dwelling-houses < 80 square metres	Number	3 062	1 369	1 506	16 165	12 004	-25,7
		square metres	149 753	69 044	71 378	763 813	576 261	-24,6
		R'000	473 176	330 503	373 297	2 651 431	2 677 744	1,0
	Dwelling-houses >= 80 square metres	Number	1 439	1 337	1 210	11 245	10 538	-6,3
		square metres	381 431	361 180	341 701	3 082 010	2 855 662	-7,3
		R'000	2 468 733	2 393 492	2 374 455	19 663 015	19 044 473	-3,1
	Flats and townhouses	Number	1 454	1 030	1 820	13 689	14 191	3,7
		square metres	153 292	119 426	184 844	1 366 438	1 409 908	3,2
		R'000	1 306 397	1 017 178	1 559 803	10 047 306	11 262 544	12,1
	Other residential buildings 2/	square metres	1 372	492	4 931	104 071	155 983	49,9
		R'000	6 787	3 311	26 547	752 365	1 261 266	67,6
<b>Total residential buildings</b>	<b>R'000</b>	<b>4 255 093</b>	<b>3 744 484</b>	<b>4 334 102</b>	<b>33 114 117</b>	<b>34 246 027</b>	<b>3,4</b>	
Non-residential buildings	Office and banking space	square metres	21 529	26 582	43 933	508 639	353 900	-30,4
		R'000	189 047	237 766	413 518	4 109 947	3 085 482	-24,9
	Shopping space	square metres	61 961	30 190	42 680	925 287	697 617	-24,6
		R'000	498 628	170 686	312 390	6 953 829	5 667 425	-18,5
	Industrial and warehouse space	square metres	181 888	111 975	165 221	1 005 544	1 011 821	0,6
		R'000	974 778	621 012	874 523	5 208 936	5 525 916	6,1
	Other non-residential buildings 3/	square metres	30 295	47 219	31 955	327 349	386 521	18,1
		R'000	187 737	304 668	195 721	1 946 621	2 559 413	31,5
	<b>Total non-residential buildings</b>	<b>R'000</b>	<b>1 850 190</b>	<b>1 334 132</b>	<b>1 796 152</b>	<b>18 219 333</b>	<b>16 838 236</b>	<b>-7,6</b>
	Additions and alterations	Dwelling-houses	square metres	260 764	252 475	257 843	2 075 521	1 956 235
R'000			1 650 599	1 695 353	1 737 130	12 405 753	12 747 941	2,8
Other buildings 4/		square metres	74 143	91 568	54 559	673 258	520 176	-22,7
		R'000	641 983	802 922	549 851	5 163 381	4 700 205	-9,0
<b>Total additions and alterations</b>	<b>R'000</b>	<b>2 292 582</b>	<b>2 498 275</b>	<b>2 286 981</b>	<b>17 569 134</b>	<b>17 448 146</b>	<b>-0,7</b>	
<b>Recorded plans passed</b>	<b>Total at current prices</b>	<b>R'000</b>	<b>8 397 865</b>	<b>7 576 891</b>	<b>8 417 235</b>	<b>68 902 584</b>	<b>68 532 409</b>	<b>-0,5</b>

1/ The percentage change between cumulative figures for 2015 and 2016.

2/ Other residential buildings include institutions for the disabled, boarding houses, hostels and tourism accommodation e.g. hotels, motels, guest-houses, holiday chalets, bed-and-breakfast accommodation and casinos.

3/ Other non-residential space includes churches, sport and recreation clubs, schools, crèches, hospitals and all other non-residential space.

4/ Other buildings include other residential buildings, non-residential buildings and internal alterations. No square metres are collected for internal alterations.

**Table 10 – Recorded building plans passed by larger municipalities at current prices by type of building: Western Cape**

			Aug. 2015	Jul. 2016	Aug. 2016	Jan. - Aug. 2015	Jan. - Aug. 2016	% change 1/
Category of building	Type of building	Measuring unit						
Residential buildings	Dwelling-houses < 80 square metres	Number	463	560	567	4 003	4 737	18,3
		square metres	19 844	25 700	26 441	174 069	214 720	23,4
		R'000	100 776	138 457	159 758	936 479	1 191 942	27,3
	Dwelling-houses >= 80 square metres	Number	340	416	349	2 894	2 989	3,3
		square metres	95 376	98 965	86 424	735 662	739 152	0,5
		R'000	572 986	642 306	567 460	4 617 070	4 860 215	5,3
	Flats and townhouses	Number	457	283	177	3 485	3 205	-8,0
		square metres	36 237	42 953	28 382	324 636	379 499	16,9
		R'000	272 842	340 167	185 976	2 393 535	2 844 606	18,8
	Other residential buildings 2/	square metres	132	0	1 411	49 062	42 190	-14,0
		R'000	904	0	6 624	392 299	319 404	-18,6
	<b>Total residential buildings</b>	<b>R'000</b>	<b>947 508</b>	<b>1 120 930</b>	<b>919 818</b>	<b>8 339 383</b>	<b>9 216 167</b>	<b>10,5</b>
	Non-residential buildings	Office and banking space	square metres	130	15 502	2 658	88 382	54 276
R'000			1 040	135 731	23 383	675 012	455 956	-32,5
Shopping space		square metres	37 894	0	1 332	79 998	112 029	40,0
		R'000	316 229	0	8 586	651 687	913 975	40,2
Industrial and warehouse space		square metres	30 461	20 804	21 086	234 579	218 776	-6,7
		R'000	197 775	134 169	130 893	1 498 110	1 450 305	-3,2
Other non-residential buildings 3/		square metres	10 170	13 980	9 454	108 513	96 339	-11,2
		R'000	72 925	86 413	63 231	663 688	639 015	-3,7
<b>Total non-residential buildings</b>		<b>R'000</b>	<b>587 969</b>	<b>356 313</b>	<b>226 093</b>	<b>3 488 497</b>	<b>3 459 251</b>	<b>-0,8</b>
Additions and alterations		Dwelling-houses	square metres	71 954	73 907	73 828	610 832	561 337
	R'000		424 897	469 819	476 844	3 459 563	3 553 042	2,7
	Other buildings 4/	square metres	34 107	34 171	20 040	160 541	167 002	4,0
		R'000	318 623	355 484	215 412	1 585 585	1 729 777	9,1
<b>Total additions and alterations</b>	<b>R'000</b>	<b>743 520</b>	<b>825 303</b>	<b>692 256</b>	<b>5 045 148</b>	<b>5 282 819</b>	<b>4,7</b>	
<b>Recorded plans passed</b>	<b>Total at current prices</b>	<b>R'000</b>	<b>2 278 997</b>	<b>2 302 546</b>	<b>1 838 167</b>	<b>16 873 028</b>	<b>17 958 237</b>	<b>6,4</b>

1/ The percentage change between cumulative figures for 2015 and 2016.

2/ Other residential buildings include institutions for the disabled, boarding houses, hostels and tourism accommodation e.g. hotels, motels, guest-houses, holiday chalets, bed-and-breakfast accommodation and casinos.

3/ Other non-residential space includes churches, sport and recreation clubs, schools, crèches, hospitals and all other non-residential space.

4/ Other buildings include other residential buildings, non-residential buildings and internal alterations. No square metres are collected for internal alterations.

**Table 11 – Recorded building plans passed by larger municipalities at current prices by type of building: Eastern Cape**

			Aug. 2015	Jul. 2016	Aug. 2016	Jan. - Aug. 2015	Jan. - Aug. 2016	% change 1/
Category of building	Type of building	Measuring unit						
Residential buildings	Dwelling-houses < 80 square metres	Number	47	45	13	1 277	587	-54,0
		square metres	2 343	2 952	844	55 690	29 092	-47,8
		R'000	8 861	16 939	5 135	149 110	129 044	-13,5
	Dwelling-houses >= 80 square metres	Number	49	124	60	646	687	6,3
		square metres	12 310	30 621	13 061	159 239	153 961	-3,3
		R'000	63 639	170 825	75 230	900 210	884 091	-1,8
	Flats and townhouses	Number	15	21	80	246	654	165,9
		square metres	1 525	4 581	8 252	26 603	48 407	82,0
		R'000	7 853	25 728	46 964	146 312	267 411	82,8
	Other residential buildings 2/	square metres	0	0	0	1 716	2 064	20,3
		R'000	0	0	0	11 154	8 626	-22,7
<b>Total residential buildings</b>	<b>R'000</b>	<b>80 353</b>	<b>213 492</b>	<b>127 329</b>	<b>1 206 786</b>	<b>1 289 172</b>	<b>6,8</b>	
Non-residential buildings	Office and banking space	square metres	136	0	619	5 301	1 163	-78,1
		R'000	802	0	2 786	28 376	5 287	-81,4
	Shopping space	square metres	0	0	1 642	91 437	3 578	-96,1
		R'000	0	0	9 274	575 421	18 307	-96,8
	Industrial and warehouse space	square metres	3 560	7 806	352	48 830	70 766	44,9
		R'000	18 231	38 735	1 699	239 579	334 963	39,8
	Other non-residential buildings 3/	square metres	4 241	3 738	12 123	19 509	28 650	46,9
		R'000	15 455	18 888	66 209	94 032	139 522	48,4
	<b>Total non-residential buildings</b>	<b>R'000</b>	<b>34 488</b>	<b>57 623</b>	<b>79 968</b>	<b>937 408</b>	<b>498 079</b>	<b>-46,9</b>
	Additions and alterations	Dwelling-houses	square metres	19 508	16 090	20 394	213 034	158 219
R'000			95 313	81 908	109 127	1 082 315	823 990	-23,9
Other buildings 4/		square metres	9 657	13 638	3 099	61 487	48 401	-21,3
		R'000	43 251	59 677	14 451	294 896	210 210	-28,7
<b>Total additions and alterations</b>	<b>R'000</b>	<b>138 564</b>	<b>141 585</b>	<b>123 578</b>	<b>1 377 211</b>	<b>1 034 200</b>	<b>-24,9</b>	
<b>Recorded plans passed</b>	<b>Total at current prices</b>	<b>R'000</b>	<b>253 405</b>	<b>412 700</b>	<b>330 875</b>	<b>3 521 405</b>	<b>2 821 451</b>	<b>-19,9</b>

1/ The percentage change between cumulative figures for 2015 and 2016.

2/ Other residential buildings include institutions for the disabled, boarding houses, hostels and tourism accommodation e.g. hotels, motels, guest-houses, holiday chalets, bed-and-breakfast accommodation and casinos.

3/ Other non-residential space includes churches, sport and recreation clubs, schools, crèches, hospitals and all other non-residential space.

4/ Other buildings include other residential buildings, non-residential buildings and internal alterations. No square metres are collected for internal alterations.

**Table 12 – Recorded building plans passed by larger municipalities at current prices by type of building: Northern Cape**

			Aug. 2015	Jul. 2016	Aug. 2016	Jan. - Aug. 2015	Jan. - Aug. 2016	% change 1/
Category of building	Type of building	Measuring unit						
<b>Residential buildings</b>	Dwelling-houses < 80 square metres	Number	0	4	6	22	21	-4,5
		square metres	0	246	403	1 234	1 454	17,8
		R'000	0	1 509	2 348	7 410	8 687	17,2
	Dwelling-houses >= 80 square metres	Number	10	13	24	105	140	33,3
		square metres	2 007	2 491	4 019	22 510	25 590	13,7
		R'000	13 350	16 217	25 039	122 972	163 749	33,2
	Flats and townhouses	Number	0	1	0	0	51	..
		square metres	0	75	0	0	5 856	..
		R'000	0	488	0	0	35 623	..
	Other residential buildings 2/	square metres	0	0	822	5 600	822	-85,3
		R'000	0	0	5 343	44 638	5 343	-88,0
	<b>Total residential buildings</b>	<b>R'000</b>	<b>13 350</b>	<b>18 214</b>	<b>32 730</b>	<b>175 020</b>	<b>213 402</b>	<b>21,9</b>
<b>Non-residential buildings</b>	Office and banking space	square metres	0	0	0	102	9 203	8 922,5
		R'000	0	0	0	612	55 150	8 911,4
	Shopping space	square metres	0	3 087	0	228	4 585	1 911,0
		R'000	0	19 756	0	1 186	26 902	2 168,3
	Industrial and warehouse space	square metres	0	536	605	1 993	9 981	400,8
		R'000	0	2 412	3 933	10 962	58 185	430,8
	Other non-residential buildings 3/	square metres	833	568	0	1 335	1 511	13,2
		R'000	4 457	3 692	0	6 787	9 000	32,6
	<b>Total non-residential buildings</b>	<b>R'000</b>	<b>4 457</b>	<b>25 860</b>	<b>3 933</b>	<b>19 547</b>	<b>149 237</b>	<b>663,5</b>
	<b>Additions and alterations</b>	Dwelling-houses	square metres	4 593	6 420	5 180	34 790	35 943
R'000			29 355	47 558	36 813	194 847	253 511	30,1
Other buildings 4/		square metres	337	250	0	5 250	2 437	-53,6
		R'000	2 247	13 458	410	32 961	35 661	8,2
<b>Total additions and alterations</b>	<b>R'000</b>	<b>31 602</b>	<b>61 016</b>	<b>37 223</b>	<b>227 808</b>	<b>289 172</b>	<b>26,9</b>	
<b>Recorded plans passed</b>	<b>Total at current prices</b>	<b>R'000</b>	<b>49 409</b>	<b>105 090</b>	<b>73 886</b>	<b>422 375</b>	<b>651 811</b>	<b>54,3</b>

1/ The percentage change between cumulative figures for 2015 and 2016.

2/ Other residential buildings include institutions for the disabled, boarding houses, hostels and tourism accommodation e.g. hotels, motels, guest-houses, holiday chalets, bed-and-breakfast accommodation and casinos.

3/ Other non-residential space includes churches, sport and recreation clubs, schools, crèches, hospitals and all other non-residential space.

4/ Other buildings include other residential buildings, non-residential buildings and internal alterations. No square metres are collected for internal alterations.

**Table 13 – Recorded building plans passed by larger municipalities at current prices by type of building: Free State**

			Aug. 2015	Jul. 2016	Aug. 2016	Jan. - Aug. 2015	Jan. - Aug. 2016	% change 1/
Category of building	Type of building	Measuring unit						
Residential buildings	Dwelling-houses < 80 square metres	Number	178	37	87	1 293	641	-50,4
		square metres	10 003	2 091	4 625	70 368	33 863	-51,9
		R'000	35 361	11 633	16 707	182 145	119 745	-34,3
	Dwelling-houses >= 80 square metres	Number	63	98	58	591	555	-6,1
		square metres	13 382	21 419	13 030	121 019	127 224	5,1
		R'000	74 585	121 214	70 267	628 168	689 435	9,8
	Flats and townhouses	Number	24	30	5	325	348	7,1
		square metres	2 439	4 991	730	32 102	41 208	28,4
		R'000	17 073	34 937	3 285	198 964	270 660	36,0
	Other residential buildings 2/	square metres	121	492	2 030	20 320	6 691	-67,1
		R'000	847	3 311	11 504	117 149	42 603	-63,6
<b>Total residential buildings</b>	<b>R'000</b>	<b>127 866</b>	<b>171 095</b>	<b>101 763</b>	<b>1 126 426</b>	<b>1 122 443</b>	<b>-0,4</b>	
Non-residential buildings	Office and banking space	square metres	0	0	280	7 060	13 111	85,7
		R'000	0	0	1 260	47 494	102 964	116,8
	Shopping space	square metres	4 257	110	3 285	78 104	10 298	-86,8
		R'000	34 011	770	26 280	456 021	71 616	-84,3
	Industrial and warehouse space	square metres	4 195	7 324	10 975	57 499	44 941	-21,8
		R'000	20 722	35 493	49 388	282 740	210 791	-25,4
	Other non-residential buildings 3/	square metres	0	25	1 500	8 630	11 575	34,1
		R'000	0	200	11 098	47 044	84 579	79,8
	<b>Total non-residential buildings</b>	<b>R'000</b>	<b>54 733</b>	<b>36 463</b>	<b>88 026</b>	<b>833 299</b>	<b>469 950</b>	<b>-43,6</b>
	Additions and alterations	Dwelling-houses	square metres	13 179	14 008	11 779	104 921	96 513
R'000			66 465	73 465	64 218	508 434	504 024	-0,9
Other buildings 4/		square metres	2 879	6 346	391	24 671	13 783	-44,1
		R'000	23 281	40 257	24 346	180 036	174 122	-3,3
<b>Total additions and alterations</b>	<b>R'000</b>	<b>89 746</b>	<b>113 722</b>	<b>88 564</b>	<b>688 470</b>	<b>678 146</b>	<b>-1,5</b>	
<b>Recorded plans passed</b>	<b>Total at current prices</b>	<b>R'000</b>	<b>272 345</b>	<b>321 280</b>	<b>278 353</b>	<b>2 648 195</b>	<b>2 270 539</b>	<b>-14,3</b>

1/ The percentage change between cumulative figures for 2015 and 2016.

2/ Other residential buildings include institutions for the disabled, boarding houses, hostels and tourism accommodation e.g. hotels, motels, guest-houses, holiday chalets, bed-and-breakfast accommodation and casinos.

3/ Other non-residential space includes churches, sport and recreation clubs, schools, crèches, hospitals and all other non-residential space.

4/ Other buildings include other residential buildings, non-residential buildings and internal alterations. No square metres are collected for internal alterations.

**Table 14 – Recorded building plans passed by larger municipalities at current prices by type of building: KwaZulu-Natal**

			Aug. 2015	Jul. 2016	Aug. 2016	Jan. - Aug. 2015	Jan. - Aug. 2016	% change 1/
Category of building	Type of building	Measuring unit						
Residential buildings	Dwelling-houses < 80 square metres	Number	19	20	26	210	256	21,9
		square metres	1 167	1 092	1 412	12 168	13 153	8,1
		R'000	8 824	9 776	12 564	90 441	94 510	4,5
	Dwelling-houses >= 80 square metres	Number	118	110	118	1 054	929	-11,9
		square metres	39 787	32 886	34 841	326 606	286 543	-12,3
		R'000	362 241	289 767	313 275	2 745 093	2 465 391	-10,2
	Flats and townhouses	Number	653	96	245	1 652	2 365	43,2
		square metres	82 950	22 161	33 259	209 530	237 301	13,3
		R'000	791 311	216 833	312 592	1 706 491	2 186 183	28,1
	Other residential buildings 2/	square metres	0	0	0	6 769	3 794	-44,0
		R'000	0	0	0	68 031	21 083	-69,0
<b>Total residential buildings</b>	<b>R'000</b>	<b>1 162 376</b>	<b>516 376</b>	<b>638 431</b>	<b>4 610 056</b>	<b>4 767 167</b>	<b>3,4</b>	
Non-residential buildings	Office and banking space	square metres	0	6 719	1 193	86 398	93 718	8,5
		R'000	0	69 108	9 705	606 196	903 694	49,1
	Shopping space	square metres	14 043	284	9 564	131 630	283 739	115,6
		R'000	118 049	2 982	78 000	1 128 978	2 657 325	135,4
	Industrial and warehouse space	square metres	102 954	26 270	34 817	285 391	161 154	-43,5
		R'000	544 191	151 479	198 911	1 485 378	885 269	-40,4
	Other non-residential buildings 3/	square metres	8 540	18 120	3 217	53 811	75 044	39,5
		R'000	61 369	130 921	23 954	360 627	512 867	42,2
	<b>Total non-residential buildings</b>	<b>R'000</b>	<b>723 609</b>	<b>354 490</b>	<b>310 570</b>	<b>3 581 179</b>	<b>4 959 155</b>	<b>38,5</b>
	Additions and alterations	Dwelling-houses	square metres	30 081	31 929	32 510	225 372	235 323
R'000			253 889	304 169	293 175	1 799 199	2 054 572	14,2
Other buildings 4/		square metres	11 629	22 243	13 306	190 027	144 049	-24,2
		R'000	130 377	208 597	148 880	1 589 413	1 349 832	-15,1
<b>Total additions and alterations</b>	<b>R'000</b>	<b>384 266</b>	<b>512 766</b>	<b>442 055</b>	<b>3 388 612</b>	<b>3 404 404</b>	<b>0,5</b>	
<b>Recorded plans passed</b>	<b>Total at current prices</b>	<b>R'000</b>	<b>2 270 251</b>	<b>1 383 632</b>	<b>1 391 056</b>	<b>11 579 847</b>	<b>13 130 726</b>	<b>13,4</b>

1/ The percentage change between cumulative figures for 2015 and 2016.

2/ Other residential buildings include institutions for the disabled, boarding houses, hostels and tourism accommodation e.g. hotels, motels, guest-houses, holiday chalets, bed-and-breakfast accommodation and casinos.

3/ Other non-residential space includes churches, sport and recreation clubs, schools, crèches, hospitals and all other non-residential space.

4/ Other buildings include other residential buildings, non-residential buildings and internal alterations. No square metres are collected for internal alterations.

**Table 15 – Recorded building plans passed by larger municipalities at current prices by type of building: North West**

			Aug. 2015	Jul. 2016	Aug. 2016	Jan. - Aug. 2015	Jan. - Aug. 2016	% change 1/
Category of building	Type of building	Measuring unit						
<b>Residential buildings</b>	Dwelling-houses < 80 square metres	Number	433	3	10	1 065	95	-91,1
		square metres	26 524	198	562	55 490	5 751	-89,6
		R'000	102 335	905	2 565	176 568	26 395	-85,1
	Dwelling-houses >= 80 square metres	Number	162	79	74	684	606	-11,4
		square metres	27 309	20 505	17 306	165 539	149 997	-9,4
		R'000	131 759	108 761	87 859	819 983	770 060	-6,1
	Flats and townhouses	Number	32	162	0	873	651	-25,4
		square metres	1 092	5 298	0	70 228	49 252	-29,9
		R'000	5 185	33 208	0	385 372	260 049	-32,5
	Other residential buildings 2/	square metres	0	0	0	1 310	1 325	1,1
		R'000	0	0	0	6 841	7 954	16,3
	<b>Total residential buildings</b>	<b>R'000</b>	<b>239 279</b>	<b>142 874</b>	<b>90 424</b>	<b>1 388 764</b>	<b>1 064 458</b>	<b>-23,4</b>
<b>Non-residential buildings</b>	Office and banking space	square metres	3 073	0	0	8 536	1 312	-84,6
		R'000	18 985	0	0	45 954	6 494	-85,9
	Shopping space	square metres	1 260	1 624	788	36 002	22 067	-38,7
		R'000	5 822	7 704	3 477	195 677	119 037	-39,2
	Industrial and warehouse space	square metres	326	3 047	9 551	9 207	19 415	110,9
		R'000	1 467	15 236	42 980	40 369	91 726	127,2
	Other non-residential buildings 3/	square metres	900	803	1 747	8 014	9 300	16,0
		R'000	5 400	4 497	10 482	35 677	50 711	42,1
	<b>Total non-residential buildings</b>	<b>R'000</b>	<b>31 674</b>	<b>27 437</b>	<b>56 939</b>	<b>317 677</b>	<b>267 968</b>	<b>-15,6</b>
	<b>Additions and alterations</b>	Dwelling-houses	square metres	13 344	10 966	14 329	96 962	95 752
R'000			63 404	56 335	69 559	452 903	455 647	0,6
Other buildings 4/		square metres	486	497	1 324	18 304	10 322	-43,6
		R'000	5 035	3 536	7 242	107 260	66 772	-37,7
<b>Total additions and alterations</b>	<b>R'000</b>	<b>68 439</b>	<b>59 871</b>	<b>76 801</b>	<b>560 163</b>	<b>522 419</b>	<b>-6,7</b>	
<b>Recorded plans passed</b>	<b>Total at current prices</b>	<b>R'000</b>	<b>339 392</b>	<b>230 182</b>	<b>224 164</b>	<b>2 266 604</b>	<b>1 854 845</b>	<b>-18,2</b>

1/ The percentage change between cumulative figures for 2015 and 2016.

2/ Other residential buildings include institutions for the disabled, boarding houses, hostels and tourism accommodation e.g. hotels, motels, guest-houses, holiday chalets, bed-and-breakfast accommodation and casinos.

3/ Other non-residential space includes churches, sport and recreation clubs, schools, crèches, hospitals and all other non-residential space.

4/ Other buildings include other residential buildings, non-residential buildings and internal alterations. No square metres are collected for internal alterations.



**Table 16 – Recorded building plans passed by larger municipalities at current prices by type of building: Gauteng**

			Aug. 2015	Jul. 2016	Aug. 2016	Jan. - Aug. 2015	Jan. - Aug. 2016	% change 1/	
Category of building	Type of building	Measuring unit							
<b>Residential buildings</b>	Dwelling-houses < 80 square metres	Number	1 822	479	774	7 329	4 704	-35,8	
		square metres	85 027	23 398	35 910	344 345	226 462	-34,2	
		R'000	194 832	110 710	169 224	886 893	903 997	1,9	
	Dwelling-houses >= 80 square metres	Number	500	356	380	3 600	3 298	-8,4	
		square metres	141 817	118 650	127 395	1 128 351	1 043 099	-7,6	
		R'000	1 012 623	869 162	987 146	7 820 973	7 535 461	-3,7	
	Flats and townhouses	Number	257	410	1 304	6 435	6 613	2,8	
		square metres	26 921	37 455	113 142	631 377	617 002	-2,3	
		R'000	202 462	357 070	1 005 917	4 870 897	5 230 221	7,4	
	Other residential buildings 2/	square metres	0	0	0	5 831	91 573	1 470,5	
		R'000	0	0	0	44 550	821 186	1 743,3	
	<b>Total residential buildings</b>		<b>R'000</b>	<b>1 409 917</b>	<b>1 336 942</b>	<b>2 162 287</b>	<b>13 623 313</b>	<b>14 490 865</b>	<b>6,4</b>
<b>Non-residential buildings</b>	Office and banking space	square metres	11 416	4 077	39 095	291 628	148 668	-49,0	
		R'000	115 204	31 507	375 988	2 582 685	1 382 226	-46,5	
	Shopping space	square metres	1 301	4 958	13 525	452 185	203 913	-54,9	
		R'000	9 927	29 607	124 597	3 675 216	1 565 133	-57,4	
	Industrial and warehouse space	square metres	37 133	37 156	65 899	298 737	411 881	37,9	
		R'000	177 757	201 069	345 498	1 309 887	2 139 404	63,3	
	Other non-residential buildings 3/	square metres	2 574	6 298	2 412	101 814	139 063	36,6	
		R'000	13 871	37 594	13 951	615 835	1 000 228	62,4	
	<b>Total non-residential buildings</b>		<b>R'000</b>	<b>316 759</b>	<b>299 777</b>	<b>860 034</b>	<b>8 183 623</b>	<b>6 086 991</b>	<b>-25,6</b>
	<b>Additions and alterations</b>	Dwelling-houses	square metres	90 787	75 761	83 053	624 581	622 661	-0,3
R'000			637 203	554 292	609 504	4 159 144	4 395 377	5,7	
Other buildings 4/		square metres	14 459	11 568	13 723	189 145	115 997	-38,7	
		R'000	108 633	100 605	120 475	1 228 098	994 676	-19,0	
<b>Total additions and alterations</b>		<b>R'000</b>	<b>745 836</b>	<b>654 897</b>	<b>729 979</b>	<b>5 387 242</b>	<b>5 390 053</b>	<b>0,1</b>	
<b>Recorded plans passed</b>	<b>Total at current prices</b>		<b>R'000</b>	<b>2 472 512</b>	<b>2 291 616</b>	<b>3 752 300</b>	<b>27 194 178</b>	<b>25 967 909</b>	<b>-4,5</b>

1/ The percentage change between cumulative figures for 2015 and 2016.

2/ Other residential buildings include institutions for the disabled, boarding houses, hostels and tourism accommodation e.g. hotels, motels, guest-houses, holiday chalets, bed-and-breakfast accommodation and casinos.

3/ Other non-residential space includes churches, sport and recreation clubs, schools, crèches, hospitals and all other non-residential space.

4/ Other buildings include other residential buildings, non-residential buildings and internal alterations. No square metres are collected for internal alterations.

**Table 17 – Recorded building plans passed by larger municipalities at current prices by type of building: Mpumalanga**

			Aug. 2015	Jul. 2016	Aug. 2016	Jan. - Aug. 2015	Jan. - Aug. 2016	% change 1/
Category of building	Type of building	Measuring unit						
<b>Residential buildings</b>	Dwelling-houses < 80 square metres	Number	80	215	21	747	847	13,4
		square metres	3 710	12 939	1 045	38 393	44 809	16,7
		R'000	16 512	38 652	4 316	160 360	169 225	5,5
	Dwelling-houses >= 80 square metres	Number	155	86	87	1 236	917	-25,8
		square metres	35 886	18 971	25 474	297 874	209 766	-29,6
		R'000	175 628	96 144	150 615	1 420 852	1 086 362	-23,5
	Flats and townhouses	Number	0	24	0	188	229	21,8
		square metres	0	1 626	0	11 915	18 316	53,7
		R'000	0	7 317	0	54 204	100 987	86,3
	Other residential buildings 2/	square metres	1 119	0	529	7 413	6 083	-17,9
		R'000	5 036	0	2 381	40 686	27 602	-32,2
	<b>Total residential buildings</b>	<b>R'000</b>	<b>197 176</b>	<b>142 113</b>	<b>157 312</b>	<b>1 676 102</b>	<b>1 384 176</b>	<b>-17,4</b>
<b>Non-residential buildings</b>	Office and banking space	square metres	6 162	0	88	15 344	27 353	78,3
		R'000	50 000	0	396	96 119	149 371	55,4
	Shopping space	square metres	3 206	19 289	7 477	50 804	48 269	-5,0
		R'000	14 590	105 842	36 841	247 405	249 972	1,0
	Industrial and warehouse space	square metres	600	5 567	20 616	55 609	56 805	2,2
		R'000	4 200	25 418	94 357	283 449	265 999	-6,2
	Other non-residential buildings 3/	square metres	2 808	1 066	1 502	8 553	19 529	128,3
		R'000	13 115	4 904	6 796	41 159	90 786	120,6
	<b>Total non-residential buildings</b>	<b>R'000</b>	<b>81 905</b>	<b>136 164</b>	<b>138 390</b>	<b>668 132</b>	<b>756 128</b>	<b>13,2</b>
	<b>Additions and alterations</b>	Dwelling-houses	square metres	13 290	17 404	11 305	126 690	107 834
R'000			60 475	78 819	50 624	567 779	498 844	-12,1
Other buildings 4/		square metres	552	1 383	2 560	13 373	11 860	-11,3
		R'000	10 371	12 259	14 055	80 229	94 859	18,2
<b>Total additions and alterations</b>	<b>R'000</b>	<b>70 846</b>	<b>91 078</b>	<b>64 679</b>	<b>648 008</b>	<b>593 703</b>	<b>-8,4</b>	
<b>Recorded plans passed</b>	<b>Total at current prices</b>	<b>R'000</b>	<b>349 927</b>	<b>369 355</b>	<b>360 381</b>	<b>2 992 242</b>	<b>2 734 007</b>	<b>-8,6</b>

1/ The percentage change between cumulative figures for 2015 and 2016.

2/ Other residential buildings include institutions for the disabled, boarding houses, hostels and tourism accommodation e.g. hotels, motels, guest-houses, holiday chalets, bed-and-breakfast accommodation and casinos.

3/ Other non-residential space includes churches, sport and recreation clubs, schools, crèches, hospitals and all other non-residential space.

4/ Other buildings include other residential buildings, non-residential buildings and internal alterations. No square metres are collected for internal alterations.

**Table 18 – Recorded building plans passed by larger municipalities at current prices by type of building: Limpopo**

			Aug. 2015	Jul. 2016	Aug. 2016	Jan. - Aug. 2015	Jan. - Aug. 2016	% change 1/
Category of building	Type of building	Measuring unit						
<b>Residential buildings</b>	Dwelling-houses < 80 square metres	Number	20	6	2	219	116	-47,0
		square metres	1 135	428	136	12 056	6 957	-42,3
		R'000	5 675	1 922	680	62 025	34 199	-44,9
	Dwelling-houses >= 80 square metres	Number	42	55	60	435	417	-4,1
		square metres	13 557	16 672	20 151	125 210	120 330	-3,9
		R'000	61 922	79 096	97 564	587 694	589 709	0,3
	Flats and townhouses	Number	16	3	9	485	75	-84,5
		square metres	2 128	286	1 079	60 047	13 067	-78,2
		R'000	9 671	1 430	5 069	291 531	66 804	-77,1
	Other residential buildings 2/	square metres	0	0	139	6 050	1 441	-76,2
		R'000	0	0	695	27 017	7 465	-72,4
	<b>Total residential buildings</b>	<b>R'000</b>	<b>77 268</b>	<b>82 448</b>	<b>104 008</b>	<b>968 267</b>	<b>698 177</b>	<b>-27,9</b>
<b>Non-residential buildings</b>	Office and banking space	square metres	612	284	0	5 888	5 096	-13,5
		R'000	3 016	1 420	0	27 499	24 340	-11,5
	Shopping space	square metres	0	838	5 067	4 899	9 139	86,5
		R'000	0	4 025	25 335	22 238	45 158	103,1
	Industrial and warehouse space	square metres	2 659	3 465	1 320	13 699	18 102	32,1
		R'000	10 435	17 001	6 864	58 462	89 274	52,7
	Other non-residential buildings 3/	square metres	229	2 621	0	17 170	5 510	-67,9
		R'000	1 145	17 559	0	81 772	32 705	-60,0
	<b>Total non-residential buildings</b>	<b>R'000</b>	<b>14 596</b>	<b>40 005</b>	<b>32 199</b>	<b>189 971</b>	<b>191 477</b>	<b>0,8</b>
	<b>Additions and alterations</b>	Dwelling-houses	square metres	4 028	5 990	5 465	38 339	42 653
R'000			19 598	28 988	27 266	181 569	208 934	15,1
Other buildings 4/		square metres	37	1 472	116	10 460	6 325	-39,5
		R'000	165	9 049	4 580	64 903	44 296	-31,8
<b>Total additions and alterations</b>	<b>R'000</b>	<b>19 763</b>	<b>38 037</b>	<b>31 846</b>	<b>246 472</b>	<b>253 230</b>	<b>2,7</b>	
<b>Recorded plans passed</b>	<b>Total at current prices</b>	<b>R'000</b>	<b>111 627</b>	<b>160 490</b>	<b>168 053</b>	<b>1 404 710</b>	<b>1 142 884</b>	<b>-18,6</b>

1/ The percentage change between cumulative figures for 2015 and 2016.

2/ Other residential buildings include institutions for the disabled, boarding houses, hostels and tourism accommodation e.g. hotels, motels, guest-houses, holiday chalets, bed-and-breakfast accommodation and casinos.

3/ Other non-residential space includes churches, sport and recreation clubs, schools, crèches, hospitals and all other non-residential space.

4/ Other buildings include other residential buildings, non-residential buildings and internal alterations. No square metres are collected for internal alterations.

**Table 19 – Buildings reported as completed to larger municipalities at current prices by type of building: South Africa**

			Aug. 2015	Jul. 2016	Aug. 2016	Jan. - Aug. 2015	Jan. - Aug. 2016	% change 1/
Category of building	Type of building	Measuring unit						
<b>Residential buildings</b>	Dwelling-houses < 80 square metres	Number	1 080	910	1 143	10 225	9 312	-8,9
		square metres	53 852	45 742	59 387	510 721	457 220	-10,5
		R'000	208 994	218 801	274 994	1 954 296	1 943 885	-0,5
	Dwelling-houses >= 80 square metres	Number	997	860	956	7 806	7 924	1,5
		square metres	259 781	231 382	241 032	2 052 980	1 937 785	-5,6
		R'000	1 647 045	1 564 823	1 626 055	12 950 399	12 700 875	-1,9
	Flats and townhouses	Number	1 184	584	865	7 231	8 359	15,6
		square metres	120 227	65 942	75 408	709 121	788 196	11,2
		R'000	910 083	495 736	582 922	4 937 730	5 900 653	19,5
	Other residential buildings 2/	square metres	10 019	6 691	3 214	65 225	26 034	-60,1
		R'000	64 734	50 487	15 868	425 934	172 881	-59,4
<b>Total residential buildings</b>	<b>R'000</b>	<b>2 830 856</b>	<b>2 329 847</b>	<b>2 499 839</b>	<b>20 268 359</b>	<b>20 718 294</b>	<b>2,2</b>	
<b>Non-residential buildings</b>	Office and banking space	square metres	44 851	37 821	29 067	289 134	386 271	33,6
		R'000	297 311	318 918	189 507	2 247 364	3 176 374	41,3
	Shopping space	square metres	50 968	25 053	38 302	247 352	333 360	34,8
		R'000	252 431	223 029	241 320	1 591 285	2 760 931	73,5
	Industrial and warehouse space	square metres	124 767	106 384	111 740	627 982	725 752	15,6
		R'000	704 449	565 172	679 944	3 203 736	3 906 481	21,9
	Other non-residential buildings 3/	square metres	25 662	7 055	15 536	141 090	188 335	33,5
		R'000	166 804	43 468	95 081	894 456	1 189 720	33,0
	<b>Total non-residential buildings</b>	<b>R'000</b>	<b>1 420 995</b>	<b>1 150 587</b>	<b>1 205 852</b>	<b>7 936 841</b>	<b>11 033 506</b>	<b>39,0</b>
	<b>Additions and alterations</b>	Dwelling-houses	square metres	105 327	82 070	92 332	772 518	778 859
R'000			601 726	482 842	568 942	4 175 326	4 597 400	10,1
Other buildings 4/		square metres	24 674	28 510	27 432	306 166	235 714	-23,0
		R'000	212 737	222 383	221 279	2 379 471	1 963 378	-17,5
<b>Total additions and alterations</b>	<b>R'000</b>	<b>814 463</b>	<b>705 225</b>	<b>790 221</b>	<b>6 554 797</b>	<b>6 560 778</b>	<b>0,1</b>	
<b>Recorded buildings completed</b>	<b>Total at current prices</b>	<b>R'000</b>	<b>5 066 314</b>	<b>4 185 659</b>	<b>4 495 912</b>	<b>34 759 997</b>	<b>38 312 578</b>	<b>10,2</b>

1/ The percentage change between cumulative figures for 2015 and 2016.

2/ Other residential buildings include institutions for the disabled, boarding houses, hostels and tourism accommodation e.g. hotels, motels, guest-houses, holiday chalets, bed-and-breakfast accommodation and casinos.

3/ Other non-residential space includes churches, sport and recreation clubs, schools, crèches, hospitals and all other non-residential space.

4/ Other buildings include other residential buildings, non-residential buildings and internal alterations. No square metres are collected for internal alterations.

**Table 20 – Buildings reported as completed to larger municipalities at current prices by type of building: Western Cape**

			Aug. 2015	Jul. 2016	Aug. 2016	Jan. - Aug. 2015	Jan. - Aug. 2016	% change 1/	
Category of building	Type of building	Measuring unit							
Residential buildings	Dwelling-houses < 80 square metres	Number	361	285	266	3 572	2 267	-36,5	
		square metres	16 166	12 879	12 051	167 223	102 796	-38,5	
		R'000	77 308	62 534	59 444	706 637	521 817	-26,2	
	Dwelling-houses >= 80 square metres	Number	251	292	306	2 106	2 177	3,4	
		square metres	63 882	67 680	76 569	506 756	509 234	0,5	
		R'000	391 226	437 077	477 976	3 039 293	3 175 956	4,5	
	Flats and townhouses	Number	648	214	220	1 957	2 404	22,8	
		square metres	47 880	22 405	25 741	193 144	238 696	23,6	
		R'000	355 395	170 076	195 821	1 385 142	1 823 355	31,6	
	Other residential buildings 2/	square metres	1 363	4 042	768	13 372	5 879	-56,0	
		R'000	6 788	32 740	5 219	82 961	47 297	-43,0	
	<b>Total residential buildings</b>		<b>R'000</b>	<b>830 717</b>	<b>702 427</b>	<b>738 460</b>	<b>5 214 033</b>	<b>5 568 425</b>	<b>6,8</b>
	Non-residential buildings	Office and banking space	square metres	38 250	2 499	17 422	78 411	83 308	6,2
R'000			251 788	14 424	107 644	521 284	517 271	-0,8	
Shopping space		square metres	5 954	300	16 032	66 035	30 901	-53,2	
		R'000	38 656	2 514	91 493	466 543	205 873	-55,9	
Industrial and warehouse space		square metres	53 377	11 520	34 740	171 387	150 496	-12,2	
		R'000	331 440	67 517	262 832	1 019 884	964 814	-5,4	
Other non-residential buildings 3/		square metres	9 199	2 417	12 413	50 544	69 244	37,0	
		R'000	51 356	15 717	78 257	296 831	465 847	56,9	
<b>Total non-residential buildings</b>		<b>R'000</b>	<b>673 240</b>	<b>100 172</b>	<b>540 226</b>	<b>2 304 542</b>	<b>2 153 805</b>	<b>-6,5</b>	
Additions and alterations		Dwelling-houses	square metres	46 600	42 409	43 253	312 473	319 969	2,4
	R'000		219 672	221 993	237 066	1 486 363	1 671 476	12,5	
	Other buildings 4/	square metres	5 958	10 954	8 546	86 135	86 716	0,7	
		R'000	66 521	101 476	92 311	817 104	845 553	3,5	
	<b>Total additions and alterations</b>		<b>R'000</b>	<b>286 193</b>	<b>323 469</b>	<b>329 377</b>	<b>2 303 467</b>	<b>2 517 029</b>	<b>9,3</b>
<b>Recorded buildings completed</b>	<b>Total at current prices</b>		<b>R'000</b>	<b>1 790 150</b>	<b>1 126 068</b>	<b>1 608 063</b>	<b>9 822 042</b>	<b>10 239 259</b>	<b>4,2</b>

1/ The percentage change between cumulative figures for 2015 and 2016.

2/ Other residential buildings include institutions for the disabled, boarding houses, hostels and tourism accommodation e.g. hotels, motels, guest-houses, holiday chalets, bed-and-breakfast accommodation and casinos.

3/ Other non-residential space includes churches, sport and recreation clubs, schools, crèches, hospitals and all other non-residential space.

4/ Other buildings include other residential buildings, non-residential buildings and internal alterations. No square metres are collected for internal alterations.

**Table 21 – Buildings reported as completed to larger municipalities at current prices by type of building: Eastern Cape**

			Aug. 2015	Jul. 2016	Aug. 2016	Jan. - Aug. 2015	Jan. - Aug. 2016	% change 1/	
Category of building	Type of building	Measuring unit							
<b>Residential buildings</b>	Dwelling-houses < 80 square metres	Number	55	107	29	698	456	-34,7	
		square metres	2 831	5 268	1 402	31 815	22 633	-28,9	
		R'000	10 790	15 329	5 429	86 712	84 325	-2,8	
	Dwelling-houses >= 80 square metres	Number	69	21	40	426	273	-35,9	
		square metres	11 403	4 525	8 016	86 721	57 083	-34,2	
		R'000	54 529	29 290	40 850	420 727	309 490	-26,4	
	Flats and townhouses	Number	12	4	2	108	267	147,2	
		square metres	1 162	346	497	10 709	27 561	157,4	
		R'000	6 304	1 712	2 582	54 922	148 245	169,9	
	Other residential buildings 2/	square metres	5 138	0	2 071	8 838	3 130	-64,6	
		R'000	26 584	0	8 672	43 639	15 556	-64,4	
	<b>Total residential buildings</b>		<b>R'000</b>	<b>98 207</b>	<b>46 331</b>	<b>57 533</b>	<b>606 000</b>	<b>557 616</b>	<b>-8,0</b>
<b>Non-residential buildings</b>	Office and banking space	square metres	0	3 061	252	859	3 449	301,5	
		R'000	0	18 050	1 134	4 500	19 986	344,1	
	Shopping space	square metres	480	1 369	0	7 179	2 402	-66,5	
		R'000	2 476	6 845	0	35 147	12 406	-64,7	
	Industrial and warehouse space	square metres	16 342	0	3 078	69 579	6 801	-90,2	
		R'000	73 539	0	14 624	339 628	30 388	-91,1	
	Other non-residential buildings 3/	square metres	0	260	0	4 343	373	-91,4	
		R'000	0	1 220	0	21 300	1 706	-92,0	
	<b>Total non-residential buildings</b>		<b>R'000</b>	<b>76 015</b>	<b>26 115</b>	<b>15 758</b>	<b>400 575</b>	<b>64 486</b>	<b>-83,9</b>
	<b>Additions and alterations</b>	Dwelling-houses	square metres	3 034	3 048	4 891	59 527	35 097	-41,0
R'000			14 786	15 022	22 686	247 477	158 303	-36,0	
Other buildings 4/		square metres	591	1 596	613	14 789	13 356	-9,7	
		R'000	2 630	7 168	3 529	85 914	64 135	-25,3	
<b>Total additions and alterations</b>		<b>R'000</b>	<b>17 416</b>	<b>22 190</b>	<b>26 215</b>	<b>333 391</b>	<b>222 438</b>	<b>-33,3</b>	
<b>Recorded buildings completed</b>	<b>Total at current prices</b>		<b>R'000</b>	<b>191 638</b>	<b>94 636</b>	<b>99 506</b>	<b>1 339 966</b>	<b>844 540</b>	<b>-37,0</b>

1/ The percentage change between cumulative figures for 2015 and 2016.

2/ Other residential buildings include institutions for the disabled, boarding houses, hostels and tourism accommodation e.g. hotels, motels, guest-houses, holiday chalets, bed-and-breakfast accommodation and casinos.

3/ Other non-residential space includes churches, sport and recreation clubs, schools, crèches, hospitals and all other non-residential space.

4/ Other buildings include other residential buildings, non-residential buildings and internal alterations. No square metres are collected for internal alterations.

**Table 22 – Buildings reported as completed to larger municipalities at current prices by type of building: Northern Cape**

			Aug. 2015	Jul. 2016	Aug. 2016	Jan. - Aug. 2015	Jan. - Aug. 2016	% change 1/	
Category of building	Type of building	Measuring unit							
<b>Residential buildings</b>	Dwelling-houses < 80 square metres	Number	0	0	1	38	1	-97,4	
		square metres	0	0	70	2 111	70	-96,7	
		R'000	0	0	315	11 761	315	-97,3	
	Dwelling-houses >= 80 square metres	Number	11	12	11	154	61	-60,4	
		square metres	2 737	1 870	2 685	22 046	11 983	-45,6	
		R'000	15 393	12 494	19 371	124 281	79 506	-36,0	
	Flats and townhouses	Number	0	0	0	42	1	-97,6	
		square metres	0	0	0	2 940	149	-94,9	
		R'000	0	0	0	16 170	1 028	-93,6	
	Other residential buildings 2/	square metres	0	0	0	0	158	..	
		R'000	0	0	0	0	948	..	
	<b>Total residential buildings</b>		<b>R'000</b>	<b>15 393</b>	<b>12 494</b>	<b>19 686</b>	<b>152 212</b>	<b>81 797</b>	<b>-46,3</b>
<b>Non-residential buildings</b>	Office and banking space	square metres	0	0	0	658	325	-50,6	
		R'000	0	0	0	3 814	1 463	-61,6	
	Shopping space	square metres	0	275	0	678	275	-59,4	
		R'000	0	1 238	0	4 102	1 238	-69,8	
	Industrial and warehouse space	square metres	256	0	0	2 273	0	..	
		R'000	1 536	0	0	10 813	0	..	
	Other non-residential buildings 3/	square metres	0	0	0	0	0	..	
		R'000	0	0	0	0	0	..	
	<b>Total non-residential buildings</b>		<b>R'000</b>	<b>1 536</b>	<b>1 238</b>	<b>0</b>	<b>18 729</b>	<b>2 701</b>	<b>-85,6</b>
	<b>Additions and alterations</b>	Dwelling-houses	square metres	2 066	3 599	4 021	17 768	30 317	70,6
R'000			13 064	26 822	29 837	97 324	220 010	126,1	
Other buildings 4/		square metres	52	215	810	10 460	3 910	-62,6	
		R'000	549	7 548	6 548	59 615	38 497	-35,4	
<b>Total additions and alterations</b>		<b>R'000</b>	<b>13 613</b>	<b>34 370</b>	<b>36 385</b>	<b>156 939</b>	<b>258 507</b>	<b>64,7</b>	
<b>Recorded buildings completed</b>	<b>Total at current prices</b>		<b>R'000</b>	<b>30 542</b>	<b>48 102</b>	<b>56 071</b>	<b>327 880</b>	<b>343 005</b>	<b>4,6</b>

1/ The percentage change between cumulative figures for 2015 and 2016.

2/ Other residential buildings include institutions for the disabled, boarding houses, hostels and tourism accommodation e.g. hotels, motels, guest-houses, holiday chalets, bed-and-breakfast accommodation and casinos.

3/ Other non-residential space includes churches, sport and recreation clubs, schools, crèches, hospitals and all other non-residential space.

4/ Other buildings include other residential buildings, non-residential buildings and internal alterations. No square metres are collected for internal alterations.

**Table 23 – Buildings reported as completed to larger municipalities at current prices by type of building: Free State**

			Aug. 2015	Jul. 2016	Aug. 2016	Jan. - Aug. 2015	Jan. - Aug. 2016	% change 1/	
Category of building	Type of building	Measuring unit							
<b>Residential buildings</b>	Dwelling-houses < 80 square metres	Number	183	8	7	1 244	204	-83,6	
		square metres	9 672	418	410	68 058	11 288	-83,4	
		R'000	18 876	971	2 242	151 752	29 569	-80,5	
	Dwelling-houses >= 80 square metres	Number	17	27	28	180	224	24,4	
		square metres	2 915	5 829	6 228	31 647	43 107	36,2	
		R'000	14 451	30 304	35 440	149 010	224 667	50,8	
	Flats and townhouses	Number	0	59	137	201	1 293	543,3	
		square metres	0	7 949	11 298	25 713	69 924	171,9	
		R'000	0	55 643	79 086	126 428	394 252	211,8	
	Other residential buildings 2/	square metres	0	0	203	24 586	308	-98,7	
		R'000	0	0	1 117	142 508	1 642	-98,8	
	<b>Total residential buildings</b>		<b>R'000</b>	<b>33 327</b>	<b>86 918</b>	<b>117 885</b>	<b>569 698</b>	<b>650 130</b>	<b>14,1</b>
<b>Non-residential buildings</b>	Office and banking space	square metres	0	0	506	2 405	6 572	173,3	
		R'000	0	0	4 048	14 382	46 510	223,4	
	Shopping space	square metres	0	1 060	0	6 206	18 668	200,8	
		R'000	0	8 480	0	29 062	139 582	380,3	
	Industrial and warehouse space	square metres	0	3 735	0	3 807	40 159	954,9	
		R'000	0	16 808	0	15 228	197 716	1 198,4	
	Other non-residential buildings 3/	square metres	0	0	0	4 453	0	..	
		R'000	0	0	0	26 615	0	..	
	<b>Total non-residential buildings</b>		<b>R'000</b>	<b>0</b>	<b>25 288</b>	<b>4 048</b>	<b>85 287</b>	<b>383 808</b>	<b>350,0</b>
	<b>Additions and alterations</b>	Dwelling-houses	square metres	2 222	2 779	1 621	23 477	20 954	-10,7
R'000			10 000	12 962	7 745	106 994	96 391	-9,9	
Other buildings 4/		square metres	0	4 601	0	7 363	6 127	-16,8	
		R'000	926	22 269	2 006	64 653	43 259	-33,1	
<b>Total additions and alterations</b>		<b>R'000</b>	<b>10 926</b>	<b>35 231</b>	<b>9 751</b>	<b>171 647</b>	<b>139 650</b>	<b>-18,6</b>	
<b>Recorded buildings completed</b>	<b>Total at current prices</b>		<b>R'000</b>	<b>44 253</b>	<b>147 437</b>	<b>131 684</b>	<b>826 632</b>	<b>1 173 588</b>	<b>42,0</b>

1/ The percentage change between cumulative figures for 2015 and 2016.

2/ Other residential buildings include institutions for the disabled, boarding houses, hostels and tourism accommodation e.g. hotels, motels, guest-houses, holiday chalets, bed-and-breakfast accommodation and casinos.

3/ Other non-residential space includes churches, sport and recreation clubs, schools, crèches, hospitals and all other non-residential space.

4/ Other buildings include other residential buildings, non-residential buildings and internal alterations. No square metres are collected for internal alterations.



**Table 24 – Buildings reported as completed to larger municipalities at current prices by type of building: KwaZulu-Natal**

			Aug. 2015	Jul. 2016	Aug. 2016	Jan. - Aug. 2015	Jan. - Aug. 2016	% change 1/
Category of building	Type of building	Measuring unit						
<b>Residential buildings</b>	Dwelling-houses < 80 square metres	Number	26	14	25	160	178	11,3
		square metres	1 544	780	1 515	9 631	10 513	9,2
		R'000	14 251	6 658	13 861	83 720	88 749	6,0
	Dwelling-houses >= 80 square metres	Number	60	47	77	502	497	-1,0
		square metres	14 037	13 275	19 695	133 168	132 269	-0,7
		R'000	126 575	105 176	155 256	1 068 855	1 078 834	0,9
	Flats and townhouses	Number	178	47	28	679	453	-33,3
		square metres	28 655	9 065	6 567	113 190	81 081	-28,4
		R'000	262 686	90 322	51 726	907 825	711 190	-21,7
	Other residential buildings 2/	square metres	2 096	844	0	3 983	8 796	120,8
		R'000	21 527	3 798	0	32 601	48 677	49,3
	<b>Total residential buildings</b>	<b>R'000</b>	<b>425 039</b>	<b>205 954</b>	<b>220 843</b>	<b>2 093 001</b>	<b>1 927 450</b>	<b>-7,9</b>
	<b>Non-residential buildings</b>	Office and banking space	square metres	2 257	838	4 646	48 038	94 254
R'000			22 570	3 771	26 727	449 878	807 723	79,5
Shopping space		square metres	10 435	22 049	5 398	59 324	169 673	186,0
		R'000	63 809	203 952	56 680	478 583	1 609 517	236,3
Industrial and warehouse space		square metres	20 269	44 422	49 960	85 589	184 734	115,8
		R'000	113 931	240 499	284 770	442 363	988 472	123,5
Other non-residential buildings 3/		square metres	0	307	722	8 829	5 074	-42,5
		R'000	0	2 102	3 247	64 439	35 627	-44,7
<b>Total non-residential buildings</b>		<b>R'000</b>	<b>200 310</b>	<b>450 324</b>	<b>371 424</b>	<b>1 435 263</b>	<b>3 441 339</b>	<b>139,8</b>
<b>Additions and alterations</b>		Dwelling-houses	square metres	15 186	7 485	10 926	94 562	96 010
	R'000		145 313	67 036	101 105	842 370	861 588	2,3
	Other buildings 4/	square metres	3 111	5 666	7 710	61 638	50 300	-18,4
		R'000	28 424	35 610	56 507	498 540	351 754	-29,4
	<b>Total additions and alterations</b>	<b>R'000</b>	<b>173 737</b>	<b>102 646</b>	<b>157 612</b>	<b>1 340 910</b>	<b>1 213 342</b>	<b>-9,5</b>
<b>Recorded buildings completed</b>	<b>Total at current prices</b>	<b>R'000</b>	<b>799 086</b>	<b>758 924</b>	<b>749 879</b>	<b>4 869 174</b>	<b>6 582 131</b>	<b>35,2</b>

1/ The percentage change between cumulative figures for 2015 and 2016.

2/ Other residential buildings include institutions for the disabled, boarding houses, hostels and tourism accommodation e.g. hotels, motels, guest-houses, holiday chalets, bed-and-breakfast accommodation and casinos.

3/ Other non-residential space includes churches, sport and recreation clubs, schools, crèches, hospitals and all other non-residential space.

4/ Other buildings include other residential buildings, non-residential buildings and internal alterations. No square metres are collected for internal alterations.

**Table 25 – Buildings reported as completed to larger municipalities at current prices by type of building: North West**

			Aug. 2015	Jul. 2016	Aug. 2016	Jan. - Aug. 2015	Jan. - Aug. 2016	% change 1/	
Category of building	Type of building	Measuring unit							
<b>Residential buildings</b>	Dwelling-houses < 80 square metres	Number	12	41	11	51	339	564,7	
		square metres	759	2 514	747	3 359	20 806	519,4	
		R'000	3 764	10 056	3 241	12 139	77 334	537,1	
	Dwelling-houses >= 80 square metres	Number	126	52	54	563	957	70,0	
		square metres	29 107	11 366	11 878	111 254	155 229	39,5	
		R'000	141 425	55 962	55 848	513 577	717 644	39,7	
	Flats and townhouses	Number	20	4	111	570	488	-14,4	
		square metres	1 337	214	3 179	44 892	38 108	-15,1	
		R'000	5 680	922	21 872	200 158	190 951	-4,6	
	Other residential buildings 2/	square metres	0	0	0	1 227	0	..	
		R'000	0	0	0	4 908	0	..	
	<b>Total residential buildings</b>		<b>R'000</b>	<b>150 869</b>	<b>66 940</b>	<b>80 961</b>	<b>730 782</b>	<b>985 929</b>	<b>34,9</b>
<b>Non-residential buildings</b>	Office and banking space	square metres	989	1 926	0	6 825	7 032	3,0	
		R'000	4 945	11 556	0	36 688	36 804	0,3	
	Shopping space	square metres	3 202	0	10 122	33 461	22 071	-34,0	
		R'000	15 974	0	47 465	164 983	110 971	-32,7	
	Industrial and warehouse space	square metres	0	0	0	15 177	2 940	-80,6	
		R'000	0	0	0	61 668	16 110	-73,9	
	Other non-residential buildings 3/	square metres	0	628	0	5 104	6 172	20,9	
		R'000	0	3 768	0	25 192	29 492	17,1	
	<b>Total non-residential buildings</b>		<b>R'000</b>	<b>20 919</b>	<b>15 324</b>	<b>47 465</b>	<b>288 531</b>	<b>193 377</b>	<b>-33,0</b>
	<b>Additions and alterations</b>	Dwelling-houses	square metres	12 591	425	2 884	68 301	65 687	-3,8
R'000			52 787	1 816	14 446	275 983	281 896	2,1	
Other buildings 4/		square metres	1 294	0	1 109	14 154	6 633	-53,1	
		R'000	6 231	858	5 011	68 026	30 905	-54,6	
<b>Total additions and alterations</b>		<b>R'000</b>	<b>59 018</b>	<b>2 674</b>	<b>19 457</b>	<b>344 009</b>	<b>312 801</b>	<b>-9,1</b>	
<b>Recorded buildings completed</b>	<b>Total at current prices</b>		<b>R'000</b>	<b>230 806</b>	<b>84 938</b>	<b>147 883</b>	<b>1 363 322</b>	<b>1 492 107</b>	<b>9,4</b>

1/ The percentage change between cumulative figures for 2015 and 2016.

2/ Other residential buildings include institutions for the disabled, boarding houses, hostels and tourism accommodation e.g. hotels, motels, guest-houses, holiday chalets, bed-and-breakfast accommodation and casinos.

3/ Other non-residential space includes churches, sport and recreation clubs, schools, crèches, hospitals and all other non-residential space.

4/ Other buildings include other residential buildings, non-residential buildings and internal alterations. No square metres are collected for internal alterations.

**Table 26 – Buildings reported as completed to larger municipalities at current prices by type of building: Gauteng**

			Aug. 2015	Jul. 2016	Aug. 2016	Jan. - Aug. 2015	Jan. - Aug. 2016	% change 1/	
Category of building	Type of building	Measuring unit							
<b>Residential buildings</b>	Dwelling-houses < 80 square metres	Number	387	408	703	3 692	5 023	36,1	
		square metres	19 800	21 292	38 154	186 987	246 467	31,8	
		R'000	69 513	110 751	171 518	732 649	969 647	32,3	
	Dwelling-houses >= 80 square metres	Number	340	316	367	3 043	2 979	-2,1	
		square metres	108 576	104 959	99 547	973 210	853 975	-12,3	
		R'000	782 966	784 801	768 098	6 771 005	6 307 280	-6,8	
	Flats and townhouses	Number	287	219	346	3 273	3 131	-4,3	
		square metres	38 305	22 535	25 622	290 168	306 129	5,5	
		R'000	266 215	160 485	219 478	2 113 701	2 503 299	18,4	
	Other residential buildings 2/	square metres	850	1 805	0	11 415	6 418	-43,8	
		R'000	7 261	13 949	0	111 199	52 536	-52,8	
	<b>Total residential buildings</b>		<b>R'000</b>	<b>1 125 955</b>	<b>1 069 986</b>	<b>1 159 094</b>	<b>9 728 554</b>	<b>9 832 762</b>	<b>1,1</b>
<b>Non-residential buildings</b>	Office and banking space	square metres	537	26 371	5 871	146 195	180 778	23,7	
		R'000	3 918	255 478	48 104	1 188 732	1 690 831	42,2	
	Shopping space	square metres	10 701	0	3 711	43 153	78 060	80,9	
		R'000	50 732	0	34 133	284 788	618 569	117,2	
	Industrial and warehouse space	square metres	32 372	37 384	21 562	248 855	311 346	25,1	
		R'000	171 847	186 719	106 145	1 170 197	1 562 126	33,5	
	Other non-residential buildings 3/	square metres	13 431	3 443	1 531	50 513	100 132	98,2	
		R'000	99 563	20 661	10 083	373 274	624 739	67,4	
	<b>Total non-residential buildings</b>		<b>R'000</b>	<b>326 060</b>	<b>462 858</b>	<b>198 465</b>	<b>3 016 991</b>	<b>4 496 265</b>	<b>49,0</b>
	<b>Additions and alterations</b>	Dwelling-houses	square metres	16 541	14 156	18 992	118 958	155 384	30,6
R'000			114 722	102 291	131 476	789 614	1 070 346	35,6	
Other buildings 4/		square metres	13 203	4 981	8 584	106 884	57 491	-46,2	
		R'000	104 831	44 235	53 289	761 714	520 010	-31,7	
<b>Total additions and alterations</b>		<b>R'000</b>	<b>219 553</b>	<b>146 526</b>	<b>184 765</b>	<b>1 551 328</b>	<b>1 590 356</b>	<b>2,5</b>	
<b>Recorded buildings completed</b>	<b>Total at current prices</b>		<b>R'000</b>	<b>1 671 568</b>	<b>1 679 370</b>	<b>1 542 324</b>	<b>14 296 873</b>	<b>15 919 383</b>	<b>11,3</b>

1/ The percentage change between cumulative figures for 2015 and 2016.

2/ Other residential buildings include institutions for the disabled, boarding houses, hostels and tourism accommodation e.g. hotels, motels, guest-houses, holiday chalets, bed-and-breakfast accommodation and casinos.

3/ Other non-residential space includes churches, sport and recreation clubs, schools, crèches, hospitals and all other non-residential space.

4/ Other buildings include other residential buildings, non-residential buildings and internal alterations. No square metres are collected for internal alterations.

**Table 27 – Buildings reported as completed to larger municipalities at current prices by type of building: Mpumalanga**

			Aug. 2015	Jul. 2016	Aug. 2016	Jan. - Aug. 2015	Jan. - Aug. 2016	% change 1/
Category of building	Type of building	Measuring unit						
<b>Residential buildings</b>	Dwelling-houses < 80 square metres	Number	41	39	91	616	732	18,8
		square metres	2 269	2 116	4 368	32 705	35 872	9,7
		R'000	10 437	10 127	15 594	126 107	138 347	9,7
	Dwelling-houses >= 80 square metres	Number	88	72	52	681	566	-16,9
		square metres	21 038	16 191	10 451	148 737	126 447	-15,0
		R'000	91 309	81 880	44 417	673 505	575 199	-14,6
	Flats and townhouses	Number	21	17	8	250	148	-40,8
		square metres	1 274	1 134	331	12 831	9 886	-23,0
		R'000	5 733	5 170	1 492	57 876	44 340	-23,4
	Other residential buildings 2/	square metres	572	0	0	1 804	1 001	-44,5
		R'000	2 574	0	0	8 118	4 505	-44,5
	<b>Total residential buildings</b>	<b>R'000</b>	<b>110 053</b>	<b>97 177</b>	<b>61 503</b>	<b>865 606</b>	<b>762 391</b>	<b>-11,9</b>
<b>Non-residential buildings</b>	Office and banking space	square metres	0	2 178	0	1 320	8 655	555,7
		R'000	0	10 899	0	6 072	46 340	663,2
	Shopping space	square metres	20 196	0	0	30 021	8 271	-72,4
		R'000	80 784	0	0	122 897	51 226	-58,3
	Industrial and warehouse space	square metres	2 151	9 323	431	23 417	23 419	0,0
		R'000	12 156	53 629	1 728	109 817	117 800	7,3
	Other non-residential buildings 3/	square metres	855	0	856	1 616	6 482	301,1
		R'000	5 000	0	3 424	8 590	27 979	225,7
	<b>Total non-residential buildings</b>	<b>R'000</b>	<b>97 940</b>	<b>64 528</b>	<b>5 152</b>	<b>247 376</b>	<b>243 345</b>	<b>-1,6</b>
	<b>Additions and alterations</b>	Dwelling-houses	square metres	6 587	7 726	5 287	75 084	50 905
R'000			29 115	32 831	22 454	318 615	215 714	-32,3
Other buildings 4/		square metres	300	251	0	3 277	10 645	224,8
		R'000	1 800	1 440	1 778	15 030	61 522	309,3
<b>Total additions and alterations</b>	<b>R'000</b>	<b>30 915</b>	<b>34 271</b>	<b>24 232</b>	<b>333 645</b>	<b>277 236</b>	<b>-16,9</b>	
<b>Recorded buildings completed</b>	<b>Total at current prices</b>	<b>R'000</b>	<b>238 908</b>	<b>195 976</b>	<b>90 887</b>	<b>1 446 627</b>	<b>1 282 972</b>	<b>-11,3</b>

1/ The percentage change between cumulative figures for 2015 and 2016.

2/ Other residential buildings include institutions for the disabled, boarding houses, hostels and tourism accommodation e.g. hotels, motels, guest-houses, holiday chalets, bed-and-breakfast accommodation and casinos.

3/ Other non-residential space includes churches, sport and recreation clubs, schools, crèches, hospitals and all other non-residential space.

4/ Other buildings include other residential buildings, non-residential buildings and internal alterations. No square metres are collected for internal alterations.

**Table 28 – Buildings reported as completed to larger municipalities at current prices by type of building: Limpopo**

			Aug. 2015	Jul. 2016	Aug. 2016	Jan. - Aug. 2015	Jan. - Aug. 2016	% change 1/	
Category of building	Type of building	Measuring unit							
Residential buildings	Dwelling-houses < 80 square metres	Number	15	8	10	154	112	-27,3	
		square metres	811	475	670	8 832	6 775	-23,3	
		R'000	4 055	2 375	3 350	42 819	33 782	-21,1	
	Dwelling-houses >= 80 square metres	Number	35	21	21	151	190	25,8	
		square metres	6 086	5 687	5 963	39 441	48 458	22,9	
		R'000	29 171	27 839	28 799	190 146	232 299	22,2	
	Flats and townhouses	Number	18	20	13	151	174	15,2	
		square metres	1 614	2 294	2 173	15 534	16 662	7,3	
		R'000	8 070	11 406	10 865	75 508	83 993	11,2	
	Other residential buildings 2/	square metres	0	0	172	0	344	..	
		R'000	0	0	860	0	1 720	..	
	<b>Total residential buildings</b>		<b>R'000</b>	<b>41 296</b>	<b>41 620</b>	<b>43 874</b>	<b>308 473</b>	<b>351 794</b>	<b>14,0</b>
	Non-residential buildings	Office and banking space	square metres	2 818	948	370	4 423	1 898	-57,1
R'000			14 090	4 740	1 850	22 014	9 446	-57,1	
Shopping space		square metres	0	0	3 039	1 295	3 039	134,7	
		R'000	0	0	11 549	5 180	11 549	123,0	
Industrial and warehouse space		square metres	0	0	1 969	7 898	5 857	-25,8	
		R'000	0	0	9 845	34 138	29 055	-14,9	
Other non-residential buildings 3/		square metres	2 177	0	14	15 688	858	-94,5	
		R'000	10 885	0	70	78 215	4 330	-94,5	
<b>Total non-residential buildings</b>		<b>R'000</b>	<b>24 975</b>	<b>4 740</b>	<b>23 314</b>	<b>139 547</b>	<b>54 380</b>	<b>-61,0</b>	
Additions and alterations		Dwelling-houses	square metres	500	443	457	2 368	4 536	91,6
	R'000		2 267	2 069	2 127	10 586	21 676	104,8	
	Other buildings 4/	square metres	165	246	60	1 466	536	-63,4	
		R'000	825	1 779	300	8 875	7 743	-12,8	
<b>Total additions and alterations</b>		<b>R'000</b>	<b>3 092</b>	<b>3 848</b>	<b>2 427</b>	<b>19 461</b>	<b>29 419</b>	<b>51,2</b>	
<b>Recorded buildings completed</b>	<b>Total at current prices</b>		<b>R'000</b>	<b>69 363</b>	<b>50 208</b>	<b>69 615</b>	<b>467 481</b>	<b>435 593</b>	<b>-6,8</b>

1/ The percentage change between cumulative figures for 2015 and 2016.

2/ Other residential buildings include institutions for the disabled, boarding houses, hostels and tourism accommodation e.g. hotels, motels, guest-houses, holiday chalets, bed-and-breakfast accommodation and casinos.

3/ Other non-residential space includes churches, sport and recreation clubs, schools, crèches, hospitals and all other non-residential space.

4/ Other buildings include other residential buildings, non-residential buildings and internal alterations. No square metres are collected for internal alterations.

## Explanatory notes

<b>Introduction</b>	1	Statistics South Africa (Stats SA) conducts a monthly building statistics survey collecting information regarding building plans passed and buildings completed, financed by the private sector, from the largest local government institutions in South Africa. According to these institutions, they are not always notified about low-cost housing projects and, therefore, do not include the bulk of low-cost dwelling-houses in their reporting. Data regarding subsidised low-cost dwelling-houses can be obtained from the Department of Human Settlements.
	2	In order to improve timeliness of the publication, some information for the current month has been estimated due to late submission by respondents. These estimates will be revised in the next statistical release(s) as soon as actual information is available.
<b>Purpose of the survey</b>	3	The monthly survey data are used in monitoring the state of economy and formulation of economic policy. Furthermore, the results are important inputs to estimate the gross domestic product (GDP) and to calculate the Composite Leading Business Cycle Indicator. The data are extensively used by the private sector.
<b>Scope of the survey</b>	4	This survey covers local government institutions conducting activities for the private sector regarding - <ul style="list-style-type: none"> <li>• passing of building plans; and</li> <li>• final inspection of completed buildings.</li> </ul>
<b>Classification</b>	5	Building activities are classified in division 5 according to the 1993 edition of the <i>Standard Industrial Classification of all Economic Activities, (SIC) Fifth Edition, Report No. 09-90-02</i> . The SIC is based on the 1990 <i>International Standard Industrial Classification of all Economic Activities (ISIC)</i> with suitable adaptations for local conditions.
<b>Collection rate</b>	6	The preliminary collection rate for the survey on building statistics for August 2016 was 90,9%. The improved collection rate for July 2016 was 94,5%.
<b>Statistical unit</b>	7	The statistical unit for the collection of information is a local government institution. Local government institutions include district municipalities, metropolitan municipalities and local municipalities.
<b>Survey methodology and design</b>	8	Stats SA conducts a monthly survey of metropolitan municipalities and large local municipalities on building plans passed and buildings completed. An annual survey of the remaining municipalities is conducted regarding buildings completed. The monthly survey represents approximately 85 percent of the total value of buildings completed. Information regarding building plans passed and buildings completed for the private sector is collected by mail, fax and telephone.
<b>Constant prices</b>	9	The value of building plans passed and buildings completed at constant prices measures building activities in terms of ruling prices in a specific base year, which is currently 2015. The value of building plans passed at constant prices for each month is obtained by deflating the values at current prices with a price index known as the 'lump sum domestic buildings' as published in statistical release P0151: <i>Contract Price Adjustment Provisions (CPAP) Work Groups and Selected Materials Indices</i> . In order to be applicable, these indices (base February 1991=100) are converted to the base year 2015=100.

- Seasonal adjustment**
- 10** Seasonally adjusted estimates of building plans passed and buildings completed are generated each month, using the X-12-ARIMA Seasonal Adjustment Program developed by US Bureau of the Census Economic Research and Analyses Division, 1968.
- 11** Seasonal adjustment is a means of removing the estimated effects of normal seasonal variation from the series so that the effects of other influences on the series can be more clearly recognised. Seasonal adjustment does not aim to remove irregular or non-seasonal influences which may be present in any particular month. Influences that are volatile or unsystematic can still make it difficult to interpret the movement of the series even after adjustment for seasonal variations. Therefore, the month-to-month movements of seasonally adjusted estimates may not be reliable indicators of trend behaviour. The X-12-ARIMA procedure for building statistics is described in more detail on the Stats SA website at [Click to download building statistics seasonal adjustment May 2016.pdf](#)
- Trend cycle**
- 12** The trend is a long-term pattern or movement of a time series. The X-12-ARIMA Seasonal Adjustment Program is used for smoothing seasonally adjusted data.
- Revised figures**
- 13** Revised figures are due to late submission of data to Stats SA, or to respondents reporting revisions or corrections to their figures. Figures for the latest two years are therefore preliminary. Data are edited at municipal level.
- 14** Once a year the annual statistical release P5041.3: *Selected building statistics of the private sector as reported by local government institutions* is published with the revised and updated information at provincial and municipal level for the previous calendar year. Due to this comprehensive revision, the monthly statistical release P5041.1 reflects provincial revision where applicable.
- Related publications**
- 15** Users may also wish to refer to the following publications:
- P5041.3: *Selected building statistics of the private sector as reported by local government institutions* issued annually.
  - P9101.2: *Actual and expected expenditure on construction by the public sector per statistical region* issued annually.
  - *Building Statistics* (Report No. 50-11-01) issued annually.
- Rounding-off of figures**
- 16** Where necessary, the figures in the tables have been rounded off to the nearest digit shown.

**Symbols and abbreviations**

<b>17</b>	..	no meaningful percentage change between two specified periods available since either one or both of the totals are nil
	0	nil or figure too small to publish
	*	revised
	Stats SA	Statistics South Africa
	SIC	Standard Industrial Classification of all Economic Activities
	ISIC	International Standard Industrial Classification of all Economic Activities



## Glossary

<b>Additions and alterations</b>	Extensions to existing buildings as well as internal and external alterations of existing buildings.
<b>Blocks of flats</b>	High-density housing consisting of a number of self-contained dwelling-units, each with at least one living-room together with a kitchen and bathroom, conjoined to similar units in one building.
<b>Dwelling-house</b>	A free-standing, complete structure on a separate stand or a self-contained dwelling-unit, e.g. granny flat, on the same premises as an existing residence. Out-buildings and garages are included.
<b>Local government institutions</b>	Include – <ul style="list-style-type: none"> <li>• District municipalities;</li> <li>• Metropolitan municipalities; and</li> <li>• Local municipalities.</li> </ul>
<b>Municipality</b>	A generic term describing the “unit” of government in the local spheres responsible for local government in a geographically demarcated area and including district, metropolitan and local municipalities. It is an institution consisting of a municipal council (elected political representatives) and municipal administration (appointed officials).
<b>District municipality</b>	A municipality that has municipal executive and legislative authority in an area that includes more than one municipality, and which is described in section 155(1) of the Constitution as a category C municipality (refer to Local Government: Municipal Structure Act, 1998 (Act No. 117 of 1998)).
<b>Metropolitan municipality</b>	A municipality that has municipal executive and legislative authority in an area that includes more than one municipality, and which is described in section 155(1) of the Constitution as a category A municipality (refer to Local Government: Municipal Structure Act, 1998 (Act No. 117 of 1998)).
<b>Local municipality</b>	A municipality that shares municipal executive and legislative authority in its area with a district municipality within whose area it falls, which is described in section 155(1) of the constitution as a category B municipality.
<b>Non-residential buildings</b>	Factories and commercial, financial and other office buildings, as well as other buildings not used for residential purposes, such as churches, halls, clubs, schools and hospitals.
<b>Other residential buildings</b>	Institutions for the disabled, boarding houses, old people’s homes, hostels, hotels, motels, guesthouses, holiday chalets, bed-and-breakfast accommodation, entertainment centres and casinos.
<b>Percentage change</b>	<p>When using monthly actual values, the percentage change is the change in actual values of building activities (building plans passed or buildings completed) of the relevant month compared with the actual values of building activities (building plans passed or buildings completed) of the same month in the previous year expressed as a percentage.</p> <p>When using annual actual values, the percentage change is the change in the actual values of building activities (building plans passed or buildings completed) of the relevant year compared with the actual values of building activities (building plans passed or buildings completed) of the previous year expressed as a percentage.</p> <p>When using seasonally adjusted values, the percentage change is the change in the seasonally adjusted values of building activities (building plans passed or buildings completed) of the relevant month compared with the seasonally adjusted values of building activities (building plans passed or buildings completed) of the previous month expressed as a percentage.</p>

<b>Reference period</b>	One calendar month.
<b>Residential buildings</b>	Buildings that are used primarily as residences. Includes dwelling-houses, flats, townhouses and other residential buildings.
<b>Townhouses</b>	Multiple, medium-density dwelling-units including cluster housing, group housing, simplexes, duplexes, triplexes and other similar dwelling-units which are usually grouped together, with one level of each unit on ground level. This category excludes blocks of flats.

## Technical enquiries

**Nicolai Claassen** Telephone number: (012) 310 8007  
Email: nicolaic@statssa.gov.za

## General information

Stats SA publishes approximately 300 different statistical releases each year. It is not economically viable to produce them in more than one of South Africa's eleven official languages. Since the releases are used extensively, not only locally but also by international economic and social-scientific communities, Stats SA releases are published in English.

Stats SA has copyright on this publication. Users may apply the information as they wish, provided that they acknowledge Stats SA as the source of the basic data wherever they process, apply, utilise, publish or distribute the data and also that they specify that the relevant application and analysis (where applicable) result from their own processing of the data.

### Advance release calendar

An advance release calendar is disseminated on [www.statssa.gov.za](http://www.statssa.gov.za)

### Stats SA products

A complete set of Stats SA publications is available at the Stats SA Library and the following libraries:

National Library of South Africa, Pretoria Division  
National Library of South Africa, Cape Town Division  
Natal Society Library, Pietermaritzburg  
Library of Parliament, Cape Town  
Bloemfontein Public Library  
Johannesburg Public Library  
Eastern Cape Library Services, King William's Town  
Central Regional Library, Polokwane  
Central Reference Library, Mbombela  
Central Reference Collection, Kimberley  
Central Reference Library, Mmabatho

Stats SA also provides a subscription service.

### Electronic services

A large range of data is available via online services. For more details about our electronic services, contact Stats SA's user information service at (012) 310 8600.

You can visit us on the Internet at: [www.statssa.gov.za](http://www.statssa.gov.za)

### General enquiries

**User information services** Telephone number: (012) 310 8600  
Email address: [info@statssa.gov.za](mailto:info@statssa.gov.za)

**Orders/subscription services** Telephone number: (012) 310 8044  
Email address: [magdaj@statssa.gov.za](mailto:magdaj@statssa.gov.za)

**Postal address** Private Bag X44, Pretoria, 0001

*Produced by Stats SA*