



The South Africa I know, the home I understand



---

# Statistical release

## P4141

# Electricity generated and available for distribution (Preliminary)

## September 2014

**Embargoed until:  
6 November 2014  
13:00**

---

**Enquiries:**

User Information Services  
Tel: (012) 310 8600

---

**Forthcoming issue:**

October 2014

---

**Expected release date:**

4 December 2014

## Contents

<b>Results for September 2014 .....</b>	<b>2</b>
Table A – Selected key figures regarding electricity generated and available for distribution .....	2
Table B – Comparison of the seasonally adjusted volume of electricity generated and available for distribution between the third quarter of 2014 and the previous quarter .....	3
Table C – Comparison of actual estimates between the third quarter of 2014 and the third quarter of 2013.....	3
Figure 1 – Electricity produced and available for distribution in South Africa, seasonally adjusted and trend .....	3
<b>Tables.....</b>	<b>4</b>
Table 1 – Total volume of electricity available for distribution in South Africa: 2009–2014 .....	4
Table 2 – Annual percentage change in electricity available for distribution in South Africa: 2009–2014 .....	4
Table 3 – Seasonally adjusted total volume of electricity available for distribution in South Africa: 2009–2014 .....	4
Table 4 – Indices of the physical volume of electricity production: 2009–2014 .....	5
Table 5 – Annual percentage change in indices of the physical volume of electricity production: 2009–2014.....	5
Table 6 – Seasonally adjusted indices of the physical volume of electricity production: 2009–2014 .....	5
Table 7 – Total volume of electricity imported: 2009–2014.....	6
Table 8 – Total volume of electricity exported: 2009–2014.....	6
Table 9a – Electricity produced and consumed in power stations, purchased and sold outside South Africa and available for distribution in South Africa (monthly figures) .....	7
Table 9b – Electricity produced and consumed in power stations, purchased and sold outside South Africa and available for distribution in South Africa (cumulative figures).....	7
Table 10 – Total volume of electricity delivered by Eskom to provinces for 2013 and 2014 .....	8
<b>Explanatory notes.....</b>	<b>9</b>
<b>Glossary.....</b>	<b>11</b>
<b>Technical enquiries .....</b>	<b>11</b>
<b>General information.....</b>	<b>12</b>

**Results for September 2014**

**Table A – Selected key figures regarding electricity generated and available for distribution**

Actual estimates	September 2014	% change between September 2013 and September 2014	% change between July to September 2013 and July to September 2014	% change between January to September 2013 and January to September 2014
Electricity available for distribution (Gigawatt-hours)	19 217	-0,3	-2,2	-0,6
Index of the physical volume of electricity production (2010=100)	97,4	0,1	-2,0	-1,4

Seasonally adjusted estimates	September 2014	% change between August and September 2014	% change between April to June 2014 and July to September 2014
Electricity available for distribution (Gigawatt-hours)	19 436	1,8	-0,6
Index of the physical volume of electricity production (2010=100)	98,2	1,6	-0,4

**Consumption of electricity**

The actual volume of electricity consumption decreased by 0,3% year-on-year in September 2014. Seasonally adjusted electricity consumption increased by 1,8% month-on-month in September 2014, and decreased by 0,6% between the second and third quarters of 2014.

**Production of electricity**

The actual estimated electricity production increased by 0,1% year-on-year in September 2014. Seasonally adjusted electricity production increased by 1,6% month-on-month in September 2014. Between the second and third quarters of 2014, seasonally adjusted electricity production decreased by 0,4%.

**Electricity delivered by Eskom to the provinces**

The total volume of electricity delivered by Eskom to the provinces decreased by 1,2% (-207 Gigawatt-hours) in September 2014 compared with September 2013. Decreases were reported in six of the nine provinces.

**Table B – Comparison of the seasonally adjusted volume of electricity generated and available for distribution between the third quarter of 2014 and the previous quarter**

Gigawatt-hours	Seasonally adjusted volume April to June 2014	Seasonally adjusted volume July to September 2014	% change between April to June 2014 and July to September 2014	Quantity difference between April to June 2014 and July to September 2014
Electricity produced	63 369	63 092	-0,4	-277
Electricity available for distribution in South Africa	57 999	57 670	-0,6	-329

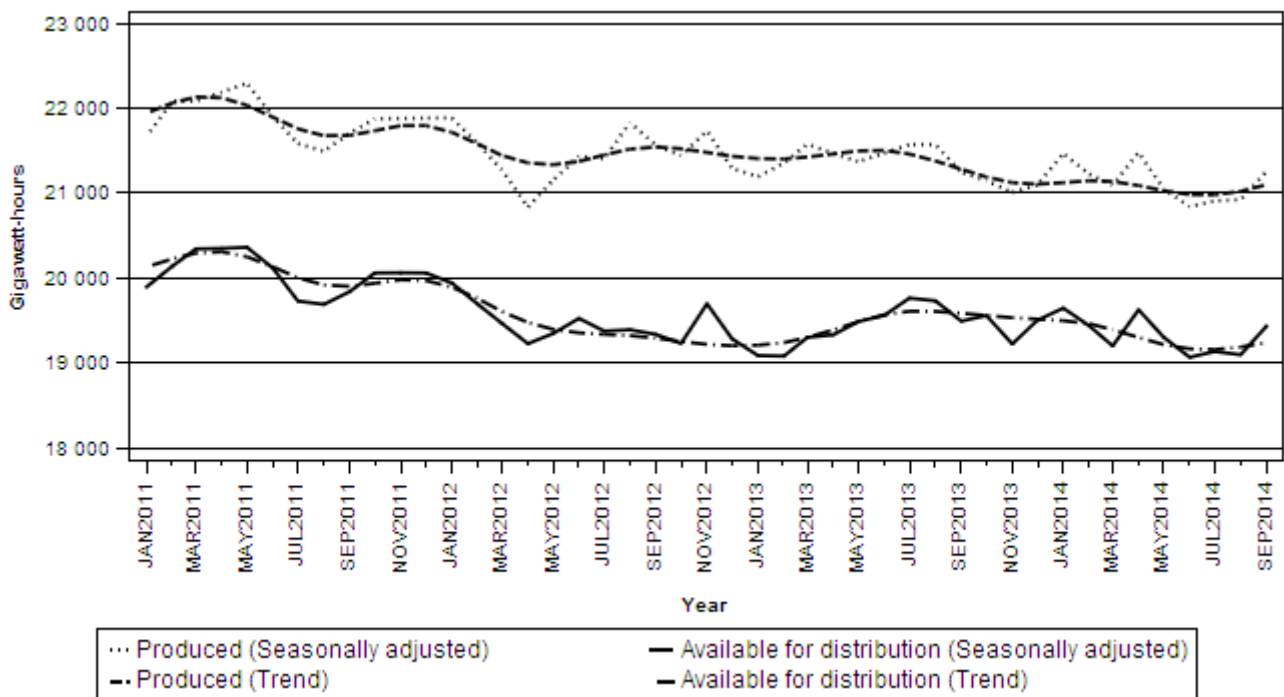
**Table C – Comparison of actual estimates between the third quarter of 2014 and the third quarter of 2013**

Gigawatt-hours	Actual volume July to September 2013	Actual volume July to September 2014	% change between July to September 2013 and July to September 2014	Quantity difference between July to September 2013 and July to September 2014
Electricity produced	66 614	65 282	-2,0	-1 332
Purchased outside South Africa (import) 1/	2 734	2 747	0,5	13
Consumed in power stations and auxiliary systems	4 737	4 781	0,9	44
Sold outside South Africa (export) 2/	3 534	3 532	-0,1	-2
<b>Electricity available for distribution in South Africa</b>	<b>61 077</b>	<b>59 715</b>	<b>-2,2</b>	<b>-1 362</b>

1/ Physical energy flowing into South Africa as measured by the metering systems at the South African borders.

2/ Physical energy flowing out of South Africa as measured by the metering systems at the South African borders.

**Figure 1 – Electricity produced and available for distribution in South Africa, seasonally adjusted and trend**



**PJ Lehohla**  
**Statistician-General**

**Tables**

**Table 1 – Total volume of electricity available for distribution in South Africa: 2009–2014**

Month	Gigawatt-hours					
	2009	2010	2011	2012	2013	2014
January	17 919	19 396	19 616	19 676	18 860	19 409
February	16 757	18 181	18 455	18 783	17 493	17 859
March	18 694	20 186	20 518	19 623	19 202	19 328
April	17 934	19 102	19 539	18 466	18 762	18 810
May	19 548	20 435	20 938	19 869	19 991	19 794
June	19 819	20 800	20 914	20 274	20 270	19 721
July	21 151	21 307	21 162	20 743	21 119	20 454
August	20 398	20 540	20 617	20 345	20 689	20 044
September	19 382	19 256	19 619	19 100	19 269	1/ 19 217
October	19 899	20 371	20 198	19 413	19 781	
November	19 248	19 702	19 763	19 426	18 968	
December	18 850	18 996	19 189	18 456	18 701	
<b>Year</b>	<b>229 599</b>	<b>238 272</b>	<b>240 528</b>	<b>234 174</b>	<b>233 105</b>	

1/ Preliminary.

**Table 2 – Annual percentage change in electricity available for distribution in South Africa: 2009–2014**

Month	% change 2/					
	2009	2010	2011	2012	2013	2014
January	-6,9	8,2	1,1	0,3	-4,1	2,9
February	-10,2	8,5	1,5	1,8	-6,9	2,1
March	-4,6	8,0	1,6	-4,4	-2,1	0,7
April	-6,2	6,5	2,3	-5,5	1,6	0,3
May	-4,0	4,5	2,5	-5,1	0,6	-1,0
June	-3,4	4,9	0,5	-3,1	0,0	-2,7
July	-2,1	0,7	-0,7	-2,0	1,8	-3,1
August	-1,6	0,7	0,4	-1,3	1,7	-3,1
September	-1,7	-0,7	1,9	-2,6	0,9	-0,3
October	-1,2	2,4	-0,8	-3,9	1,9	
November	3,3	2,4	0,3	-1,7	-2,4	
December	7,5	0,8	1,0	-3,8	1,3	
<b>Year</b>	<b>-2,7</b>	<b>3,8</b>	<b>0,9</b>	<b>-2,6</b>	<b>-0,5</b>	

2/ The annual percentage change is the change in the volume of electricity available for distribution of the relevant month of the current year compared with the corresponding month of the previous year expressed as a percentage.

**Table 3 – Seasonally adjusted total volume of electricity available for distribution in South Africa: 2009–2014**

Month	Gigawatt-hours						% change between current and previous month
	2009	2010	2011	2012	2013	2014	
January	18 203	19 708	19 896	19 943	19 088	19 647	0,7
February	18 288	19 853	20 142	19 693	19 082	19 438	-1,1
March	18 557	20 015	20 344	19 466	19 302	19 202	-1,2
April	18 720	19 905	20 350	19 228	19 333	19 627	2,2
May	18 926	19 839	20 363	19 348	19 489	19 304	-1,6
June	19 049	19 998	20 118	19 526	19 561	19 068	-1,2
July	19 626	19 820	19 730	19 377	19 765	19 136	0,4
August	19 484	19 623	19 691	19 392	19 733	19 098	-0,2
September	19 605	19 473	19 842	19 337	19 494	19 436	1,8
October	19 835	20 273	20 061	19 231	19 559		
November	19 612	20 045	20 063	19 698	19 225		
December	19 654	19 842	20 061	19 285	19 504		

**Table 4 – Indices of the physical volume of electricity production: 2009–2014**

Month	Base: 2010=100					
	2009	2010	2011	2012	2013	2014
January	89,7	97,6	98,1	99,2	96,2	97,5
February	83,5	91,1	93,3	93,8	90,5	90,0
March	93,7	101,3	103,0	99,3	99,6	98,4
April	90,7	96,2	98,9	92,9	96,7	95,7
May	98,6	102,3	105,9	100,3	101,2	99,6
June	98,8	103,8	104,6	102,2	102,2	99,1
July	106,4	106,6	106,8	105,7	106,4	103,2
August	102,7	103,2	103,7	105,4	104,2	101,2
September	98,5	97,0	99,4	98,7	97,3	1/ 97,4
October	99,6	104,6	103,1	101,1	99,9	
November	96,8	100,0	100,1	99,5	96,2	
December	94,6	96,3	96,7	94,0	93,2	
<b>Year</b>	<b>96,1</b>	<b>100,0</b>	<b>101,1</b>	<b>99,3</b>	<b>98,6</b>	

1/ Preliminary.

**Table 5 – Annual percentage change in indices of the physical volume of electricity production: 2009–2014**

Month	% change 2/					
	2009	2010	2011	2012	2013	2014
January	-9,7	8,8	0,5	1,1	-3,0	1,4
February	-11,3	9,1	2,4	0,5	-3,5	-0,6
March	-5,9	8,1	1,7	-3,6	0,3	-1,2
April	-5,7	6,1	2,8	-6,1	4,1	-1,0
May	-4,6	3,8	3,5	-5,3	0,9	-1,6
June	-3,7	5,1	0,8	-2,3	0,0	-3,0
July	-2,0	0,2	0,2	-1,0	0,7	-3,0
August	-1,3	0,5	0,5	1,6	-1,1	-2,9
September	-0,3	-1,5	2,5	-0,7	-1,4	0,1
October	-3,5	5,0	-1,4	-1,9	-1,2	
November	1,1	3,3	0,1	-0,6	-3,3	
December	7,1	1,8	0,4	-2,8	-0,9	
<b>Year</b>	<b>-3,4</b>	<b>4,1</b>	<b>1,1</b>	<b>-1,8</b>	<b>-0,7</b>	

2/ The annual percentage change is the change in the index of the physical volume of electricity production of the relevant month of the current year compared with the corresponding month of the previous year expressed as a percentage.

**Table 6 – Seasonally adjusted indices of the physical volume of electricity production: 2009–2014**

Month	Base: 2010=100						% change between current and previous month
	2009	2010	2011	2012	2013	2014	
January	91,6	99,7	100,1	101,1	97,9	99,2	1,7
February	91,6	99,9	102,1	99,7	98,7	98,1	-1,1
March	93,0	100,4	102,0	98,3	99,7	97,5	-0,6
April	94,5	99,9	102,5	96,3	99,2	99,3	1,8
May	95,3	99,3	103,0	97,7	98,8	97,3	-2,0
June	95,5	100,4	101,2	99,0	99,2	96,3	-1,0
July	98,8	99,2	99,7	98,9	99,7	96,6	0,3
August	98,2	98,8	99,3	100,9	99,7	96,7	0,1
September	99,6	98,0	100,3	99,6	98,2	98,2	1,6
October	97,9	102,7	101,1	99,1	97,7		
November	98,0	101,1	101,1	100,4	97,1		
December	98,7	100,7	101,1	98,4	97,5		

**Table 7 – Total volume of electricity imported: 2009–2014 1/**

Month	Gigawatt-hours					
	2009	2010	2011	2012	2013	2014
January	1 102	1 122	1 088	1 085	676	1 020
February	999	995	730	1 063	407	873
March	1 064	1 040	1 112	945	455	854
April	906	931	912	1 068	559	664
May	937	1 074	907	1 066	919	902
June	1 088	1 019	1 009	1 044	881	882
July	1 040	1 117	979	903	965	945
August	1 072	1 109	1 108	465	930	935
September	920	1 068	974	474	839	2/ 867
October	1 115	770	911	451	891	
November	940	1 018	1 073	654	854	
December	1 112	930	1 087	788	1 052	
<b>Year</b>	<b>12 295</b>	<b>12 193</b>	<b>11 890</b>	<b>10 006</b>	<b>9 428</b>	

1/ Physical energy flowing into South Africa as measured by the metering systems at the South African borders.

2/ Preliminary.

**Table 8 – Total volume of electricity exported: 2009–2014 1/**

Month	Gigawatt-hours					
	2009	2010	2011	2012	2013	2014
January	1 096	1 217	1 133	1 247	1 115	1 183
February	979	1 128	1 069	1 212	1 095	1 085
March	1 100	1 252	1 279	1 242	1 187	1 219
April	1 086	1 170	1 190	1 174	1 132	999
May	1 109	1 177	1 241	1 322	1 196	1 046
June	1 175	1 132	1 174	1 335	1 158	1 092
July	1 223	1 206	1 247	1 350	1 183	1 171
August	1 235	1 275	1 298	1 295	1 185	1 167
September	1 285	1 248	1 288	1 165	1 166	2/ 1 194
October	1 288	1 338	1 378	1 300	1 237	
November	1 213	1 316	1 381	1 233	1 219	
December	1 263	1 209	1 286	1 160	1 056	
<b>Year</b>	<b>14 052</b>	<b>14 668</b>	<b>14 964</b>	<b>15 035</b>	<b>13 929</b>	

1/ Physical energy flowing out of South Africa as measured by the metering systems at the South African borders.

2/ Preliminary.

**Table 9a – Electricity produced and consumed in power stations, purchased and sold outside South Africa and available for distribution in South Africa (monthly figures)**

		Gigawatt-hours				
		September 2013	August 2014	September 2014 1/	% change between September 2013 and September 2014	Difference between September 2013 and September 2014
<b>Total - All producers</b>	Electricity produced	21 050	21 893	21 072	0,1	22
	Purchased outside South Africa (import) 2/	839	935	867	3,3	28
	Consumed in power stations and auxiliary systems	1 454	1 617	1 528	5,1	74
	Sold outside South Africa (export) 3/	1 166	1 167	1 194	2,4	28
	<b>Electricity available for distribution in South Africa</b>	<b>19 269</b>	<b>20 044</b>	<b>19 217</b>	<b>-0,3</b>	<b>-52</b>
<b>ESKOM</b>	Electricity produced	20 131	20 786	20 008	-0,6	-123
	Purchased outside South Africa (import) 2/	839	935	867	3,3	28
	Consumed in power stations and auxiliary systems	1 378	1 533	1 461	6,0	83
	Sold outside South Africa (export) 3/	1 166	1 167	1 194	2,4	28
	<b>Electricity available for distribution in South Africa</b>	<b>18 425</b>	<b>19 021</b>	<b>18 220</b>	<b>-1,1</b>	<b>-205</b>

1/ Preliminary.

2/ Physical energy flowing into South Africa as measured by the metering systems at the South African borders.

3/ Physical energy flowing out of South Africa as measured by the metering systems at the South African borders.

**Table 9b – Electricity produced and consumed in power stations, purchased and sold outside South Africa and available for distribution in South Africa (cumulative figures)**

		Gigawatt-hours			
		January to September 2013	January to September 2014 1/	% change between January to September 2013 and January to September 2014	Difference between January to September 2013 and January to September 2014
<b>Total - All producers</b>	Electricity produced	193 483	190 806	-1,4	-2 677
	Purchased outside South Africa (import) 2/	6 631	7 942	19,8	1 311
	Consumed in power stations and auxiliary systems	14 044	13 954	-0,6	-90
	Sold outside South Africa (export) 3/	10 417	10 156	-2,5	-261
	<b>Electricity available for distribution in South Africa</b>	<b>175 655</b>	<b>174 636</b>	<b>-0,6</b>	<b>-1 019</b>
<b>ESKOM</b>	Electricity produced	185 028	181 692	-1,8	-3 336
	Purchased outside South Africa (import) 2/	6 631	7 942	19,8	1 311
	Consumed in power stations and auxiliary systems	13 438	13 276	-1,2	-162
	Sold outside South Africa (export) 3/	10 417	10 156	-2,5	-261
	<b>Electricity available for distribution in South Africa</b>	<b>167 805</b>	<b>166 199</b>	<b>-1,0</b>	<b>-1 606</b>

1/ Preliminary.

2/ Physical energy flowing into South Africa as measured by the metering systems at the South African borders.

3/ Physical energy flowing out of South Africa as measured by the metering systems at the South African borders.



**Table 10 – Total volume of electricity delivered by Eskom to provinces for 2013 and 2014 1/**

Period		Gigawatt-hours									Total South Africa
		Western Cape	Eastern Cape	Northern Cape	Free State	KwaZulu-Natal	North West	Gauteng	Mpumalanga	Limpopo	
<b>2013</b>	January	1 932	796	490	667	3 409	2 022	4 432	2 911	910	<b>17 569</b>
	February	1 825	751	441	618	3 137	1 900	4 216	2 517	811	<b>16 216</b>
	March	1 956	839	476	630	3 454	1 973	4 655	2 781	930	<b>17 694</b>
	April	1 833	802	416	615	3 351	2 000	4 754	2 732	901	<b>17 404</b>
	May	1 941	753	441	644	3 459	2 088	5 347	2 987	913	<b>18 573</b>
	June	1 902	741	440	689	3 425	2 149	5 344	3 091	994	<b>18 775</b>
	July	1 963	909	461	734	3 636	2 212	5 646	2 973	1 061	<b>19 595</b>
	August	1 970	869	456	702	3 576	2 185	5 415	2 969	1 060	<b>19 202</b>
	September	1 898	786	449	619	3 397	2 114	4 850	2 751	1 085	<b>17 949</b>
	October	1 885	810	479	660	3 520	2 158	4 938	2 942	1 058	<b>18 450</b>
	November	1 756	745	469	632	3 371	2 117	4 716	2 832	996	<b>17 634</b>
	December	1 853	737	449	601	3 331	2 057	4 516	2 741	1 008	<b>17 293</b>
	<b>Year</b>	<b>22 714</b>	<b>9 538</b>	<b>5 467</b>	<b>7 811</b>	<b>41 066</b>	<b>24 975</b>	<b>58 829</b>	<b>34 227</b>	<b>11 727</b>	<b>216 354</b>
	<b>Year to date</b>	<b>17 220</b>	<b>7 246</b>	<b>4 070</b>	<b>5 918</b>	<b>30 844</b>	<b>18 643</b>	<b>44 659</b>	<b>25 712</b>	<b>8 665</b>	<b>162 977</b>
<b>2014</b>	January	1 963	674	400	654	3 569	2 093	4 559	2 868	982	<b>17 762</b>
	February	1 887	621	349	604	3 295	1 934	4 370	2 649	907	<b>16 616</b>
	March	1 967	750	365	649	3 507	1 975	4 747	2 842	973	<b>17 775</b>
	April	1 882	753	346	641	3 411	1 887	4 634	2 770	987	<b>17 311</b>
	May	1 953	799	368	662	3 538	1 985	5 121	2 922	1 029	<b>18 377</b>
	June	1 927	789	367	642	3 419	1 835	5 447	2 900	1 028	<b>18 354</b>
	July	2 050	778	361	665	3 397	2 174	5 584	2 962	1 019	<b>18 990</b>
	August	1 944	750	350	646	3 311	2 165	5 421	2 917	1 017	<b>18 521</b>
	September 2/	1 865	715	356	619	3 271	1 965	5 066	2 828	1 057	<b>17 742</b>
	<b>Year to date</b>	<b>17 438</b>	<b>6 629</b>	<b>3 262</b>	<b>5 782</b>	<b>30 718</b>	<b>18 013</b>	<b>44 949</b>	<b>25 658</b>	<b>8 999</b>	<b>161 448</b>

1/ Wholesale energy (Gigawatt-hours) as delivered by Eskom to the various provinces.

2/ Preliminary.

## Explanatory notes

<b>Introduction</b>	1	Statistics South Africa (Stats SA) conducts a monthly sample survey of the electricity industry covering electricity undertakings and establishments (branches). This statistical release contains information regarding the volume of electricity units generated and available for distribution in South Africa, the volume of units purchased and sold outside South Africa and the volume of units distributed by Eskom by province on a monthly basis. Both actual and seasonally adjusted figures are published.
	2	This statistical release reflects indices of the physical volume of electricity production on the basis of 2010=100. In accordance with international practice, the indices have to be rebased every five years to a new base year.
	3	In order to improve timeliness of the publication, some information for the current month may have been estimated due to late submission by respondents. These estimates will be revised in the next statistical release(s) as soon as actual information is available.
<b>Purpose of the survey</b>	4	The results of the monthly electricity generated and available for distribution survey are used to compile estimates of the gross domestic product (GDP) and its components, which are used in monitoring the state of the economy and formulation of economic policy.
<b>Scope of the survey</b>	5	This survey covers electricity undertakings and establishments conducting activities concerned with the generation or transmission and distribution of electricity. It includes electrical power installations, which, as subsidiary divisions of undertakings, produce electricity for regular use by these undertakings.
<b>Classification</b>	6	The 1993 edition of the <i>Standard Industrial Classification of all Economic Activities</i> (SIC), Fifth Edition, Report No. 09-90-02, was used to classify the statistical units in the survey. The SIC is based on the 1990 <i>International Standard Industrial Classification of all Economic Activities</i> (ISIC) with suitable adaptations for local conditions. Each statistical unit is classified to an industry, which reflects the predominant activity of the electricity undertaking or establishment.
<b>Collection rate</b>	7	The collection rate for the survey on electricity generated and available for distribution for September 2014 was 100%. The collection rate for August 2014 was 100%.
<b>Statistical unit</b>	8	The basic statistical unit for the collection of information is the electricity undertaking or establishment. The electricity undertaking or establishment is the smallest economic unit that functions as a separate entity. Each statistical unit is classified to an industry (see paragraph 5).
<b>Survey methodology and design</b>	9	All statistical units are stratified by type of economic activity according to the <i>Standard Industrial Classification of all Economic Activities</i> (SIC) and measure of size, where measure of size is the volume of electricity generated by the electricity undertaking or establishment. All large undertakings or establishments (size category one cases) are completely enumerated. A sample is drawn from medium and small size undertakings and establishments by systematically selecting undertakings or establishments within each size category. An electricity undertaking or establishment with a total generating capacity of less than 500 kilowatt is excluded from the sample.
	10	The survey is conducted by mail, email and telephone. Information is collected from a sample of 25 electricity undertakings or establishments.
<b>Monthly production indices</b>	11	The calculation of the monthly production indices is based on the volume of electricity units produced.

<b>Benchmarking</b>	<b>12</b>	The index of physical volume of electricity production should provide an accurate reflection of the trend of activities of the relevant industry. The level of activities, as measured by the monthly electricity generated and available for distribution survey, is based on information received from a sample of electricity undertakings and establishments. These levels are weighted according to the original sample and designed to represent the population of electricity undertakings and establishments. It is necessary to adjust the level of activities as measured by the monthly sample survey to the level of activities as measured periodically by the Census of electricity, gas and steam. This procedure, whereby the latest results of an economic census are used to compile more accurate level estimates for a certain year, is known as benchmarking.
	<b>13</b>	The results of the 1995 Census of electricity, gas and steam served as a benchmark to verify or adjust the level of the monthly physical volume of electricity production indices collected through the monthly sample survey. The level adjustments were done on the volume indices for August of the relevant census year (the 1995 census year covered the period 1 January 1995 to 31 December 1995 and therefore, the benchmarking was done using the index of August 1995 as reference point).
<b>Seasonal adjustment</b>	<b>14</b>	Seasonally adjusted estimates of all items are generated each month, using the X-12-ARIMA Seasonal Adjustment Program developed by US Bureau of the Census Economic Research and Analyses Division, 1968. Seasonal adjustment is a means of removing the estimated effects of normal seasonal variation from a time series so that the effects of other influences on the series can be more clearly recognised. Seasonal adjustment does not aim to remove irregular or non-seasonal influences, which may be present in any particular month. Influences that are volatile or unsystematic can still make it difficult to interpret the movement of the series even after adjustment for seasonal variations. This means the month-to-month movements of seasonally adjusted estimates may not be reliable indicators of trend behaviour. The X12-ARIMA procedure for electricity generated and available for distribution is described in more detail on the Stats SA website at <a href="#">Click to download Electricity seasonal adjustment August 2014.pdf</a>
<b>Trend cycle</b>	<b>15</b>	The trend is the long-term pattern or movement of a time series. The X-12-ARIMA Seasonal Adjustment Program is used for smoothing seasonally adjusted estimates.
<b>Related publications</b>	<b>16</b>	Users may also wish to refer to the following publications which are available from Stats SA : <ul style="list-style-type: none"> <li>• <i>Bulletin of Statistics;</i></li> <li>• <i>South African Statistics;</i> and</li> <li>• <i>Stats in Brief.</i></li> </ul>
<b>Rounding-off of figures</b>	<b>17</b>	Where necessary, the figures in the tables have been rounded off to the nearest digit shown. There may therefore be slight discrepancies between the sums of the constituent items and the totals shown.

## Glossary

<b>Consumption of electricity</b>	For purposes of this release the term 'consumption of electricity' is used interchangeably with the term 'electricity available for distribution'.
<b>Electricity undertaking</b>	An electricity undertaking is an undertaking concerned with the generation or transmission and distribution of electricity, including electrical power installations, which, as subsidiary divisions of undertakings, produce electricity for regular use by these undertakings.
<b>Index of physical volume of electricity production</b>	A statistical measure of the change in the volume of production of electricity in a given period and the volume of production of electricity in the base period. The base period is 2010. The production in the base period is set at 100.
<b>Industry</b>	An industry consists of a group of undertakings or establishments engaged in the same or similar kinds of economic activity. Industries are defined in the <i>System of National Accounts (SNA)</i> in the same way as in the 1993 <i>Standard Industrial Classification of all Economic Activities (SIC)</i> , Fifth Edition, Report No. 09-90-02 of January 1993.
<b>Unit of electricity</b>	One gigawatt-hour of electricity is equal to one million kilowatt-hours. A kilowatt-hour is the basic unit of electrical energy equal to one kilowatt of power supplied to or taken from an electric circuit steadily for one hour. One kilowatt-hour equals one thousand watt-hours.
<b>Symbols and abbreviations</b>	GDP      Gross domestic product ISIC     International Standard Industrial Classification SIC      Standard Industrial Classification of all Economic Activities Stats SA Statistics South Africa *         Revised figures
<b>Technical enquiries</b>	
<b>Tsholofelo Ditinti</b>	Telephone number: (012) 310 2229 Email: tsholofelod@statssa.gov.za
<b>Suzzie Mnguni</b>	Telephone number: (012) 310 8443 Email: suzziemn@statssa.gov.za

## General information

Stats SA publishes approximately 300 different statistical releases each year. It is not economically viable to produce them in more than one of South Africa's eleven official languages. Since the releases are used extensively, not only locally but also by international economic and social-scientific communities, Stats SA releases are published in English only.

Stats SA has copyright on this publication. Users may apply the information as they wish, provided that they acknowledge Stats SA as the source of the basic data wherever they process, apply, utilise, publish or distribute the data: and also that they specify that the relevant application and analysis (where applicable) result from their own processing of the data.

### Advanced release calendar

An advanced release calendar is disseminated on [www.statssa.gov.za](http://www.statssa.gov.za)

### Stats SA products

A complete set of Stats SA publications is available at the Stats SA Library and the following libraries:

National Library of South Africa, Pretoria Division  
National Library of South Africa, Cape Town Division  
Natal Society Library, Pietermaritzburg  
Library of Parliament, Cape Town  
Bloemfontein Public Library  
Johannesburg Public Library  
Eastern Cape Library Services, King William's Town  
Central Regional Library, Polokwane  
Central Reference Library, Mbombela  
Central Reference Collection, Kimberley  
Central Reference Library, Mmabatho

Stats SA also provides a subscription service.

### Electronic services

A large range of data is available via online services. For more detail about our electronic services, contact Stats SA's user information service at (012) 310 8600.

You can visit us on the Internet at: [www.statssa.gov.za](http://www.statssa.gov.za)

### General enquiries

**User information services** Telephone number: (012) 310 8600  
Email: [info@statssa.gov.za](mailto:info@statssa.gov.za)

**Orders/subscription services** Telephone number: (012) 310 8044  
Email: [magdaj@statssa.gov.za](mailto:magdaj@statssa.gov.za)

**Postal address:** Private Bag X44, Pretoria, 0001

*Produced by Stats SA*