

# Statistical release

## P4141

### Electricity generated and available for distribution (Preliminary)

September 2010

Embargoed until:  
4 November 2010  
13:00

**Enquiries:**

User information services  
Tel: (012) 310 8600/ 8390/ 8351

**Forthcoming issue:**

October 2010

**Expected release date:**

2 December 2010

## Contents

<b>Summary of findings: Electricity generated and available for distribution .....</b>	<b>2</b>
<b>Key figures .....</b>	<b>2</b>
Table A – Selected key figures regarding electricity generated and available for distribution for September 2010 .....	2
<b>Key findings .....</b>	<b>2</b>
Consumption of electricity .....	2
Production of electricity .....	2
International trade in electricity.....	3
Table B – Comparison of the seasonally adjusted volume of electricity generated and available for distribution between the second and third quarters of 2010 .....	3
Table C – Comparison of actual estimates between the third quarter of 2010 and the third quarter of 2009.....	3
Figure 1 – Electricity produced and available for distribution in South Africa from 2007 to 2010.....	4
<b>Detailed results .....</b>	<b>5</b>
Table 1 – Total volume of electricity available for distribution in South Africa: 2005 – 2010.....	5
Table 2 – Annual percentage change in electricity available for distribution in South Africa: 2005 – 2010.....	5
Table 3 – Seasonally adjusted total volume of electricity available for distribution in South Africa: 2005 – 2010 .....	5
Table 4 – Indices of the physical volume of electricity production: 2005 – 2010.....	6
Table 5 – Annual percentage change in indices of the physical volume of electricity production: 2005 – 2010.....	6
Table 6 – Seasonally adjusted indices of the physical volume of electricity production: 2005 – 2010 .....	6
Table 7 – Total volume of electricity imported: 2005 – 2010.....	7
Table 8 – Total volume of electricity exported: 2005 – 2010.....	7
Table 9a – Electricity produced and consumed in power stations, purchased and sold outside South Africa and available for distribution in South Africa (monthly figures) .....	8
Table 9b – Electricity produced and consumed in power stations, purchased and sold outside South Africa and available for distribution in South Africa (cumulative figures).....	8
Table 10 – Total volume of electricity delivered by Eskom to provinces for 2009 and 2010 1/ .....	9
<b>Explanatory Notes.....</b>	<b>10</b>
<b>Glossary.....</b>	<b>12</b>
<b>General information .....</b>	<b>13</b>

## Summary of findings: Electricity generated and available for distribution

### Key figures

Table A – Selected key figures regarding electricity generated and available for distribution for September 2010

Actual estimates	September 2010 1/	% change between September 2009 and September 2010	% change between July to September 2009 and July to September 2010	% change between January to September 2009 and January to September 2010
Electricity available for distribution (Gigawatt-hours)	19 246	-0,7	0,3	4,4
Index of the physical volume of electricity production (2005=100)	102,7	-1,6	-0,3	4,2

1/ Preliminary.

Seasonally adjusted estimates	September 2010	% change between August and September 2010	% change between April to June 2010 and July to September 2010
Electricity available for distribution (Gigawatt-hours)	19 221	-1,3	-2,9
Index of the physical volume of electricity production (2005=100)	102,5	-1,3	-2,8

### Key findings

#### Consumption of electricity

The actual estimated volume of electricity consumed decreased by 0,7% (-136 Gigawatt-hours) in September 2010 compared with September 2009 (see Tables A, 2 and 9a). Seasonally adjusted electricity consumption decreased by 2,9% in the third quarter of 2010 compared with the second quarter of 2010 (see Tables A and B). Electricity consumption for the first nine months of 2010 was 4,4% (7 572 Gigawatt-hours) higher compared with the first nine months of 2009 (see Tables A and 9b).

#### Production of electricity

The actual estimated production of electricity decreased by 1,6% (-340 Gigawatt-hours) in September 2010 compared with September 2009 (see Tables A, 5 and 9a). Seasonally adjusted electricity production decreased by 2,8% in the third quarter of 2010 compared with the second quarter (see Tables A and B), a continuation of the downward trend seen in the second quarter of 2010. However, the estimated production of electricity for the first nine months of 2010 was 4,2% (7 905 Gigawatt-hours) higher compared with the first nine months of 2009 (see Tables A and 9b).

**Electricity delivered by Eskom to the provinces**

Electricity delivered to the provinces increased by 5,0% (7 949 Gigawatt-hours) in the first nine months of 2010 compared with the first nine months of 2009. Increases were reported for all nine provinces, ranging from 0,5% for KwaZulu-Natal to 10,6% for Mpumalanga (see Table 10).

**International trade in electricity**

The volume of electricity purchased from outside South African borders increased from 9 128 Gigawatt-hours in the first nine months of 2009 to 9 475 Gigawatt-hours in the first nine months of 2010, representing an increase of 3,8% (347 Gigawatt-hours). The volume of electricity sold to neighbouring countries increased by 5,2% (539 Gigawatt-hours) in the first nine months of 2010 compared with the first nine months of 2009 (see Table 9b).

**Table B – Comparison of the seasonally adjusted volume of electricity generated and available for distribution between the second and third quarters of 2010**

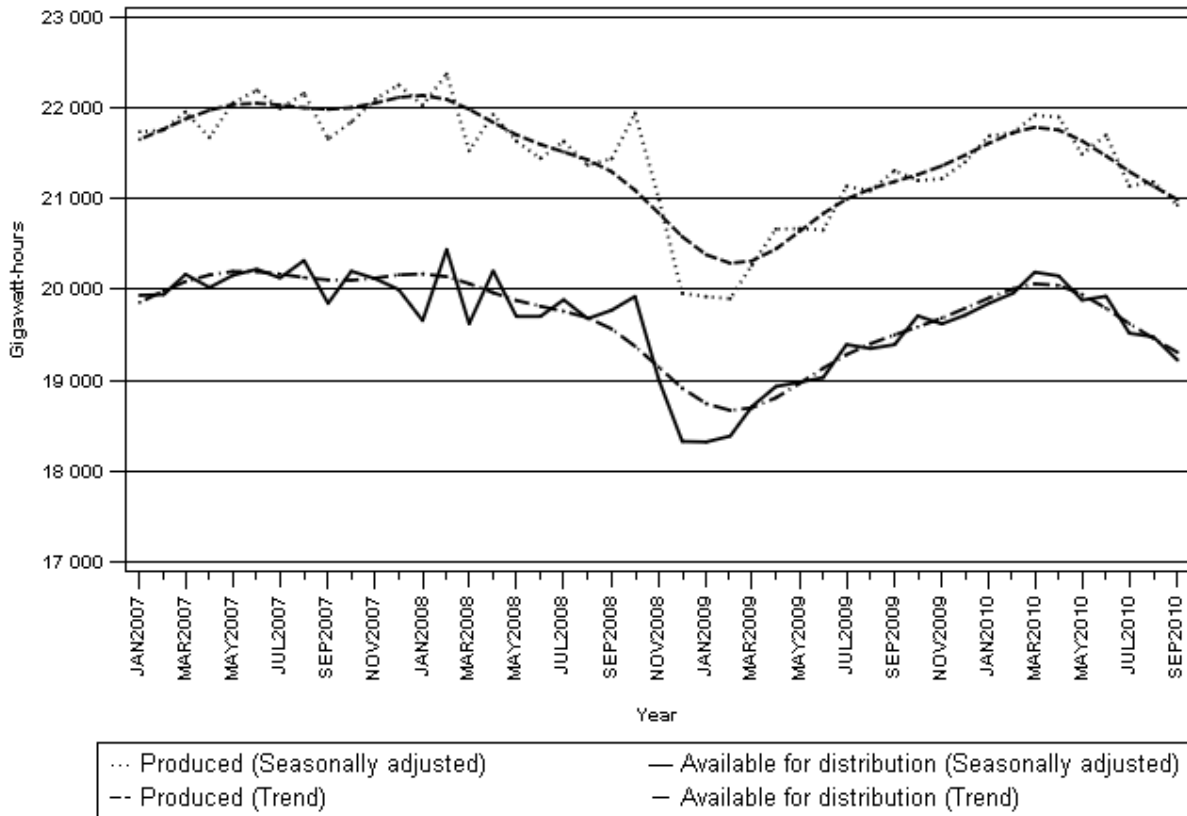
Gigawatt-hours	Seasonally adjusted quantity April to June 2010	Seasonally adjusted quantity July to September 2010	% change between April to June 2010 and July to September 2010	Quantity difference between April to June 2010 and July to September 2010
Electricity produced	65 093	63 252	-2,8	-1 841
Electricity available for distribution in South Africa	59 955	58 215	-2,9	-1 740

**Table C – Comparison of actual estimates between the third quarter of 2010 and the third quarter of 2009**

Gigawatt-hours	Actual volume July to September 2009	Actual volume July to September 2010	% change between July to September 2009 and July to September 2010	Quantity difference between July to September 2009 and July to September 2010
Electricity produced	66 542	66 350	-0,3	-192
Purchased outside South Africa (import)	3 032	3 294	8,6	262
Consumed in power stations and auxiliary systems	4 900	4 823	-1,6	-77
Sold outside South Africa (export)	3 743	3 719	-0,6	-24
Electricity available for distribution in South Africa	60 931	61 102	0,3	171

Figure 1 below shows the seasonally adjusted and trend patterns for electricity produced and available for distribution in South Africa from January 2007 to September 2010.

**Figure 1 – Electricity produced and available for distribution in South Africa from 2007 to 2010**



**PJ Lehohla**  
**Statistician-General**

## Detailed results

**Table 1 – Total volume of electricity available for distribution in South Africa: 2005 – 2010**

Month	Gigawatt-hours					
	2005	2006	2007	2008	2009	2010
January	18 149	18 603	19 561	19 256	17 919	19 396
February	17 169	17 396	18 301	18 668	16 757	18 181
March	18 487	18 982	20 160	19 603	18 694	20 186
April	18 132	18 122	18 982	19 127	17 934	19 110
May	19 224	20 312	20 901	20 365	19 548	20 441
June	18 983	20 166	21 020	20 515	19 819	20 758
July	19 657	20 632	21 780	21 610	21 151	21 316
August	19 191	20 307	21 353	20 736	20 398	20 540
September	18 383	18 987	19 732	19 725	19 382	1/ 19 246
October	19 127	19 663	20 435	20 138	19 899	
November	18 523	19 244	19 785	18 640	19 248	
December	18 230	18 909	19 160	17 541	18 850	
Year	<b>223 255</b>	<b>231 323</b>	<b>241 170</b>	<b>235 924</b>	<b>229 599</b>	

1/ Preliminary.

\* Revised

**Table 2 – Annual percentage change in electricity available for distribution in South Africa: 2005 – 2010**

Month	Percentage change 2/					
	2005	2006	2007	2008	2009	2010
January	1,7	2,5	5,1	-1,6	-6,9	8,2
February	-0,6	1,3	5,2	2,0	-10,2	8,5
March	0,1	2,7	6,2	-2,8	-4,6	8,0
April	3,5	-0,1	4,7	0,8	-6,2	6,6
May	1,7	5,7	2,9	-2,6	-4,0	4,6
June	-1,8	6,2	4,2	-2,4	-3,4	4,7
July	-2,5	5,0	5,6	-0,8	-2,1	0,8
August	-0,4	5,8	5,2	-2,9	-1,6	0,7
September	0,1	3,3	3,9	0,0	-1,7	-0,7
October	2,2	2,8	3,9	-1,5	-1,2	
November	1,1	3,9	2,8	-5,8	3,3	
December	2,7	3,7	1,3	-8,4	7,5	
Year	<b>0,6</b>	<b>3,6</b>	<b>4,3</b>	<b>-2,2</b>	<b>-2,7</b>	

2/ The annual percentage change is the change in the volume of electricity available for distribution of the relevant month of the current year compared with the corresponding month of the previous year expressed as a percentage.

**Table 3 – Seasonally adjusted total volume of electricity available for distribution in South Africa: 2005 – 2010**

Month	Gigawatt-hours						% change between current and previous month
	2005	2006	2007	2008	2009	2010	
January	18 494	18 945	19 935	19 656	18 318	19 847	0,7
February	18 647	18 920	19 944	20 440	18 383	19 959	0,6
March	18 471	18 967	20 166	19 621	18 709	20 190	1,2
April	19 076	19 106	20 021	20 204	18 930	20 148	-0,2
May	18 470	19 545	20 155	19 702	18 975	19 882	-1,3
June	18 257	19 418	20 222	19 702	19 029	19 925	0,2
July	18 275	19 152	20 127	19 886	19 392	19 517	-2,0
August	18 350	19 368	20 319	19 677	19 348	19 477	-0,2
September	18 591	19 150	19 846	19 771	19 391	19 221	-1,3
October	18 888	19 430	20 201	19 922	19 708		
November	18 811	19 555	20 117	18 998	19 619		
December	18 996	19 695	19 999	18 324	19 716		

**Table 4 – Indices of the physical volume of electricity production: 2005 – 2010**

Month	Base : 2005=100					
	2005	2006	2007	2008	2009	2010
January	97,6	99,8	103,9	105,3	95,0	103,4
February	91,7	94,0	97,2	99,7	88,5	96,5
March	100,2	103,3	107,8	105,6	99,3	107,4
April	98,1	98,0	100,9	102,0	96,1	102,0
May	102,9	108,1	111,9	109,6	104,5	108,5
June	101,6	107,3	112,5	108,8	104,8	110,1
July	105,5	110,8	116,6	115,1	112,8	113,0
August	103,0	109,1	114,1	110,3	108,8	109,4
September	99,1	101,8	105,5	104,8	104,4	1/ 102,7
October	102,5	107,2	109,1	109,4	105,6	
November	99,4	103,3	106,9	101,4	102,6	
December	98,2	100,9	104,6	93,6	100,3	
Year	100,0	103,6	107,6	105,5	101,9	

1/ Preliminary.

**Table 5 – Annual percentage change in indices of the physical volume of electricity production: 2005 – 2010**

Month	Percentage change 2/					
	2005	2006	2007	2008	2008	2010
January	2,2	2,3	4,1	1,3	-9,8	8,8
February	-0,5	2,5	3,4	2,6	-11,2	9,0
March	1,5	3,1	4,4	-2,0	-6,0	8,2
April	3,6	-0,1	3,0	1,1	-5,8	6,1
May	0,5	5,1	3,5	-2,1	-4,7	3,8
June	-3,2	5,6	4,8	-3,3	-3,7	5,1
July	-3,7	5,0	5,2	-1,3	-2,0	0,2
August	-1,2	5,9	4,6	-3,3	-1,4	0,6
September	-0,4	2,7	3,6	-0,7	-0,4	-1,6
October	0,4	4,6	1,8	0,3	-3,5	
November	0,9	3,9	3,5	-5,1	1,2	
December	2,3	2,7	3,7	-10,5	7,2	
Year	0,1	3,7	3,8	-2,0	-3,4	

2/ The annual percentage change is the change in the index of the physical volume of electricity production of the relevant month of the current year compared with the corresponding month of the previous year expressed as a percentage.

**Table 6 – Seasonally adjusted indices of the physical volume of electricity production: 2005 – 2010**

Month	Base : 2005=100						% change between current and previous month
	2005	2006	2007	2008	2009	2010	
January	100,1	102,2	106,5	107,9	97,6	106,2	1,3
February	100,4	102,8	106,5	109,6	97,4	106,4	0,2
March	100,1	103,0	107,5	105,4	99,3	107,4	0,9
April	103,0	102,9	106,1	107,4	101,2	107,2	-0,2
May	99,1	104,2	108,0	105,9	101,2	105,3	-1,8
June	97,9	103,6	108,7	105,0	101,2	106,3	0,9
July	97,8	102,7	107,7	105,9	103,5	103,5	-2,6
August	98,2	104,0	108,5	104,7	103,3	103,8	0,3
September	100,1	102,6	106,1	105,0	104,4	102,5	-1,3
October	100,1	104,9	107,0	107,5	103,8		
November	100,9	104,7	108,2	102,8	103,9		
December	102,4	105,1	109,0	97,7	104,8		

**Table 7 – Total volume of electricity imported: 2005 – 2010**

Month	Gigawatt-hours					
	2005	2006	2007	2008	2009	2010
January	729	872	1 088	638	1 102	1 122
February	714	646	942	885	999	995
March	533	581	973	802	1 064	1 040
April	598	587	1 055	844	906	931
May	849	879	900	761	937	1 074
June	813	881	880	1 002	1 088	1 019
July	856	926	984	1 089	1 040	1 117
August	883	930	1 045	1 076	1 072	1 109
September	686	971	1 026	1 044	920	1/ 1 068
October	836	682	1 040	645	1 115	
November	865	862	796	711	940	
December	837	965	619	1 075	1 112	
<b>Year</b>	<b>9 199</b>	<b>9 782</b>	<b>11 348</b>	<b>10 572</b>	<b>12 295</b>	

1/ Preliminary.

**Table 8 – Total volume of electricity exported: 2005 – 2010**

Month	Gigawatt-hours					
	2005	2006	2007	2008	2009	2010
January	1 030	1 056	1 134	1 280	1 096	1 217
February	901	1 050	1 060	1 101	979	1 128
March	968	1 129	1 231	1 136	1 100	1 252
April	991	1 017	1 132	998	1 086	1 164
May	1 083	1 046	1 203	1 120	1 109	1 172
June	1 096	1 102	1 256	1 162	1 175	1 175
July	1 102	1 239	1 301	1 249	1 223	1 197
August	1 144	1 262	1 252	1 220	1 235	1 275
September	1 134	1 239	1 186	1 203	1 285	1/ 1 247
October	1 161	1 311	1 252	1 258	1 288	
November	1 119	1 186	1 256	1 252	1 213	
December	1 155	1 129	1 233	1 189	1 263	
<b>Year</b>	<b>12 884</b>	<b>13 766</b>	<b>14 496</b>	<b>14 168</b>	<b>14 052</b>	

1/ Preliminary.



**Table 9a – Electricity produced and consumed in power stations, purchased and sold outside South Africa and available for distribution in South Africa (monthly figures)**

		Gigawatt-hours				
		September 2009	August 2010	September 2010 1/	% change between September 2009 and September 2010	Difference between September 2009 and September 2010
<b>Total - All producers</b>	Electricity produced	21 306	22 328	20 966	-1,6	-340
	Purchased outside South Africa (import)	920	1 109	1 068	16,1	148
	Consumed in power stations and auxiliary systems	1 559	1 622	1 541	-1,2	-18
	Sold outside South Africa (export)	1 285	1 275	1 247	-3,0	-38
	Electricity available for distribution in South Africa	<b>19 382</b>	<b>20 540</b>	<b>19 246</b>	<b>-0,7</b>	<b>-136</b>
<b>ESKOM</b>	Electricity produced	20 579	21 325	20 133	-2,2	-446
	Purchased outside South Africa (import)	920	1 109	1 068	16,1	148
	Consumed in power stations and auxiliary systems	1 489	1 548	1 473	-1,1	-16
	Sold outside South Africa (export)	1 285	1 275	1 247	-3,0	-38
	Electricity available for distribution in South Africa	<b>18 725</b>	<b>19 611</b>	<b>18 481</b>	<b>-1,3</b>	<b>-244</b>

1/ Preliminary.

**Table 9b – Electricity produced and consumed in power stations, purchased and sold outside South Africa and available for distribution in South Africa (cumulative figures)**

		Gigawatt-hours			
		January to September 2009	January to September 2010 1/	% change between January to September 2009 and January to September 2010	Difference between January to September 2009 and January to September 2010
<b>Total - All producers</b>	Electricity produced	186 596	194 501	4,2	7 905
	Purchased outside South Africa (import)	9 128	9 475	3,8	347
	Consumed in power stations and auxiliary systems	13 837	13 974	1,0	137
	Sold outside South Africa (export)	10 288	10 827	5,2	539
	Electricity available for distribution in South Africa	<b>171 602</b>	<b>179 174</b>	<b>4,4</b>	<b>7 572</b>
<b>ESKOM</b>	Electricity produced	179 995	188 429	4,7	8 434
	Purchased outside South Africa (import)	9 128	9 475	3,8	347
	Consumed in power stations and auxiliary systems	13 181	13 406	1,7	225
	Sold outside South Africa (export)	10 288	10 827	5,2	539
	Electricity available for distribution in South Africa	<b>165 655</b>	<b>173 671</b>	<b>4,8</b>	<b>8 016</b>

1/ Preliminary.

**Table 10 – Total volume of electricity delivered by Eskom to provinces for 2009 and 2010 1/**

Period	Gigawatt-hours										
	Western Cape	Eastern Cape	Northern Cape	Free State	KwaZulu-Natal	North West	Gauteng	Mpumalanga	Limpopo	Total South Africa	
<b>2009</b>	<b>January</b>	1 886	733	408	748	3 368	1 833	4 502	2 265	849	16 592
	<b>February</b>	1 779	625	367	661	3 196	1 721	4 272	2 154	752	15 527
	<b>March</b>	1 995	691	404	739	3 553	1 936	4 716	2 442	875	17 351
	<b>April</b>	1 812	713	350	673	3 410	1 852	4 499	2 476	860	16 645
	<b>May</b>	1 852	799	361	735	3 583	2 009	5 270	2 736	935	18 280
	<b>June</b>	1 891	744	368	763	3 529	2 033	5 552	2 711	924	18 515
	<b>July</b>	1 942	789	398	825	3 689	2 188	6 059	2 841	975	19 706
	<b>August</b>	1 982	761	370	776	3 620	2 095	5 600	2 810	993	19 007
	<b>September</b>	1 889	769	383	658	3 515	2 055	4 923	2 762	1 045	17 999
	<b>October</b>	1 878	752	398	704	3 629	2 276	5 005	2 885	1 000	18 527
	<b>November</b>	1 837	761	402	739	3 490	2 221	4 916	2 717	942	18 025
	<b>December</b>	1 840	736	420	719	3 499	2 170	4 651	2 725	947	17 707
<b>Year to date</b>	<b>22 583</b>	<b>8 873</b>	<b>4 629</b>	<b>8 740</b>	<b>42 081</b>	<b>24 389</b>	<b>59 965</b>	<b>31 524</b>	<b>11 097</b>	<b>213 881</b>	
	<b>17 028</b>	<b>6 624</b>	<b>3 409</b>	<b>6 578</b>	<b>31 463</b>	<b>17 722</b>	<b>45 393</b>	<b>23 197</b>	<b>8 208</b>	<b>159 622</b>	
<b>2010</b>	<b>January</b>	1 932	780	404	751	3 540	2 182	4 806	2 845	991	18 231
	<b>February</b>	1 842	719	383	706	3 281	2 029	4 592	2 658	917	17 127
	<b>March</b>	2 037	809	405	780	3 629	2 273	5 086	2 926	1 032	18 977
	<b>April</b>	1 873	750	362	735	3 432	2 106	4 929	2 813	983	17 982
	<b>May</b>	1 930	825	365	788	3 551	2 259	5 411	3 079	979	19 187
	<b>June</b>	1 946	797	378	814	3 527	2 175	5 784	3 011	991	19 424
	<b>July</b>	2 005	811	400	824	3 684	2 188	5 978	2 948	1 062	19 900
	<b>August</b>	2 004	899	392	779	3 508	2 208	5 416	2 797	1 038	19 041
	<b>September</b>										
	<b>2/</b>	1 851	764	387	673	3 474	2 095	4 824	2 580	1 054	17 702
<b>Year to date</b>	<b>17 420</b>	<b>7 154</b>	<b>3 476</b>	<b>6 850</b>	<b>31 626</b>	<b>19 515</b>	<b>46 826</b>	<b>25 657</b>	<b>9 047</b>	<b>167 571</b>	

1/ Wholesale energy as delivered by Eskom to the various provinces.

2/ Preliminary.

## Explanatory Notes

<b>Introduction</b>	1	Statistics South Africa (Stats SA) conducts a monthly sample survey of the electricity industry covering electricity undertakings and establishments (branches). This statistical release contains information regarding the volume of electricity units generated and available for distribution in South Africa, the volume of units purchased and sold outside South Africa and the volume of units distributed by Eskom by province on a monthly basis. Both actual and seasonally adjusted figures are published.
	2	This statistical release reflects indices of the physical volume of electricity production on the basis of 2005=100. In accordance with international practice, the indices have to be rebased every five years to a new base year.
	3	In order to improve timeliness of the publication, some information for the current month may have been estimated due to late submission by respondents. These estimates will be revised in the next statistical release(s) as soon as actual information is available.
<b>Purpose of the survey</b>	4	The results of the monthly electricity generated and available for distribution survey are used to compile estimates of the gross domestic product (GDP) and its components, which are used in monitoring the state of the economy and formulation of economic policy.
<b>Scope of the survey</b>	5	This survey covers electricity undertakings and establishments conducting activities concerned with the generation or transmission and distribution of electricity. It includes electrical power installations, which, as subsidiary divisions of undertakings, produce electricity for regular use by these undertakings.
<b>Classification</b>	6	The 1993 edition of the <i>Standard Industrial Classification of all Economic Activities (SIC)</i> , Fifth Edition, Report No. 09-90-02, was used to classify the statistical units in the survey. The SIC is based on the 1990 <i>International Standard Industrial Classification of all Economic Activities (ISIC)</i> with suitable adaptations for local conditions. Each statistical unit is classified to an industry, which reflects the predominant activity of the electricity undertaking or establishment.
<b>Response rate</b>	7	The response rate for the survey on electricity generated and available for distribution for September 2010 was 99%.
<b>Statistical unit</b>	8	The basic statistical unit for the collection of information is the electricity undertaking or establishment. The electricity undertaking or establishment is the smallest economic unit that functions as a separate entity. Each statistical unit is classified to an industry (see paragraph 5).
<b>Survey methodology and design</b>	9	All statistical units are stratified by type of economic activity according to the <i>Standard Industrial Classification of all Economic Activities (SIC)</i> and measure of size, where measure of size is the volume of electricity generated by the electricity undertaking or establishment. All large undertakings or establishments (size category one cases) are completely enumerated. A sample is drawn from medium and small size undertakings and establishments by systematically selecting undertakings or establishments within each size category. An electricity undertaking or establishment with a total generating capacity of less than 500 kilowatt is excluded from the sample.
	10	The survey is conducted by mail, email and telephone. Information is collected from a sample of 22 electricity undertakings or establishments.
<b>Monthly production indices</b>	11	The calculation of the monthly production indices is based on the volume of electricity units produced.

<b>Benchmarking</b>	<b>12</b>	The index of physical volume of electricity production should provide an accurate reflection of the trend of activities of the relevant industry. The level of activities, as measured by the monthly electricity generated and available for distribution survey, is based on information received from a sample of electricity undertakings and establishments. These levels are weighted according to the original sample and designed to represent the population of electricity undertakings and establishments. It is necessary to adjust the level of activities as measured by the monthly sample survey to the level of activities as measured periodically by the Census of electricity, gas and steam. This procedure, whereby the latest results of an economic census are used to compile more accurate level estimates for a certain year, is known as benchmarking.
	<b>13</b>	The results of the 1995 Census of electricity, gas and steam served as a benchmark to verify or adjust the level of the monthly physical volume of electricity production indices collected through the monthly sample survey. The level adjustments were done on the volume indices for August of the relevant census year (the 1995 census year covered the period 1 January 1995 to 31 December 1995 and therefore, the benchmarking was done using the index of August 1995 as reference point).
<b>Seasonal adjustment</b>	<b>14</b>	Seasonally adjusted estimates of all items are generated each month, using the X-11 Seasonal Adjustment Program developed by US Bureau of the Census Economic Research and Analyses Division, 1968. Seasonal adjustment is a means of removing the estimated effects of normal seasonal variation from the series so that the effects of other influences on the series can be more clearly recognized. Seasonal adjustment does not aim to remove irregular or non-seasonal influences, which may be present in any particular month. Influences that are volatile or unsystematic can still make it difficult to interpret the movement of the series even after adjustment for seasonal variations. This means the month-to-month movements of seasonally adjusted estimates may not be reliable indicators of trend behaviour.
<b>Trend cycle</b>	<b>15</b>	The trend is the long-term pattern or movement of a time series. The X-11 Seasonal Adjustment Program is used for smoothing seasonally adjusted estimates.
<b>Related publications</b>	<b>16</b>	Users may also wish to refer to the following publications which are available from Stats SA : <ul style="list-style-type: none"> <li>• <i>Bulletin of Statistics</i>; and</li> <li>• <i>SA Statistics</i>.</li> </ul>
<b>Unpublished statistics</b>	<b>17</b>	In some cases Stats SA can also make available statistics which are not published. The statistics can be made available as computer printouts or on CD. Generally a charge is made for providing unpublished statistics.
<b>Rounding-off of figures</b>	<b>18</b>	Where necessary, the figures in the tables have been rounded off to the nearest digit shown. There may therefore be slight discrepancies between the sums of the constituent items and the totals shown.
<b>Pre-release policy</b>	<b>19</b>	Stats SA pre-release policy may be inspected at its website, <a href="http://www.statssa.gov.za">www.statssa.gov.za</a> .

## Glossary

<b>Consumption of electricity</b>	For purposes of this release the term 'consumption of electricity' is used interchangeably with the term 'electricity available for distribution'.										
<b>Electricity undertaking</b>	An electricity undertaking is an undertaking concerned with the generation or transmission and distribution of electricity, including electrical power installations, which, as subsidiary divisions of undertakings, produce electricity for regular use by these undertakings.										
<b>Index of physical volume of electricity production</b>	A statistical measure of the change in the volume of production of electricity in a given period and the volume of production of electricity in the base period. The base period is 2005. The production in the base period is set at 100.										
<b>Industry</b>	An industry consists of a group of undertakings or establishments engaged in the same or similar kinds of economic activity. Industries are defined in the 1993 <i>System of National Accounts (1993 SNA)</i> in the same way as in the <i>Standard Industrial Classification of all Economic Activities (SIC)</i> , Fifth Edition, Report No. 09-90-02.										
<b>Unit of electricity</b>	One gigawatt-hour of electricity is equal to one million kilowatt-hours. A kilowatt-hour is the basic unit of electrical energy equal to one kilowatt of power supplied to or taken from an electric circuit steadily for one hour. One kilowatt-hour equals one thousand watt-hours.										
<b>Symbols and abbreviations</b>	<table border="0"> <tr> <td>GDP</td> <td>Gross domestic product</td> </tr> <tr> <td>ISIC</td> <td>International Standard Industrial Classification</td> </tr> <tr> <td>SIC</td> <td>Standard Industrial Classification of all Economic Activities</td> </tr> <tr> <td>Stats SA</td> <td>Statistics South Africa</td> </tr> <tr> <td>*</td> <td>Revised figures</td> </tr> </table>	GDP	Gross domestic product	ISIC	International Standard Industrial Classification	SIC	Standard Industrial Classification of all Economic Activities	Stats SA	Statistics South Africa	*	Revised figures
GDP	Gross domestic product										
ISIC	International Standard Industrial Classification										
SIC	Standard Industrial Classification of all Economic Activities										
Stats SA	Statistics South Africa										
*	Revised figures										

---

## General information

Stats SA publishes approximately 300 different statistical releases each year. It is not economically viable to produce them in more than one of South Africa's eleven official languages. Since the releases are used extensively, not only locally but also by international economic and social-scientific communities, Stats SA releases are published in English only.

Stats SA has copyright on this publication. Users may apply the information as they wish, provided that they acknowledge Stats SA as the source of the basic data wherever they process, apply, utilise, publish or distribute the data: and also that they specify that the relevant application and analysis (where applicable) result from their own processing of the data.

### Advanced release calendar

An advanced release calendar is disseminated on [www.statssa.gov.za](http://www.statssa.gov.za)

### Stats SA products

A complete set of Stats SA publications is available at the Stats SA Library and the following libraries:

National Library of South Africa, Pretoria Division  
National Library of South Africa, Cape Town Division  
Natal Society Library, Pietermaritzburg  
Library of Parliament, Cape Town  
Bloemfontein Public Library  
Johannesburg Public Library  
Eastern Cape Library Services, King William's Town  
Central Regional Library, Polokwane  
Central Reference Library, Nelspruit  
Central Reference Collection, Kimberley  
Central Reference Library, Mmabatho

Stats SA also provides a subscription service.

### Electronic services

A large range of data is available via on-line services, diskette, CD and computer printouts.

You can visit us on the Internet at: [www.statssa.gov.za](http://www.statssa.gov.za)

### General enquiries

Telephone number: (012) 310 8443 / 336 0142 (technical enquiries)  
(012) 310 8358 (orders)  
(012) 310 4883/ 4885/ 8018 (library)

Fax number: (012) 310 8664 (technical enquiries)

Email: [thembisilem@statssa.gov.za](mailto:thembisilem@statssa.gov.za) (technical enquiries)  
[nicolaic@statssa.gov.za](mailto:nicolaic@statssa.gov.za) (technical enquiries)  
[info@statssa.gov.za](mailto:info@statssa.gov.za) (user information services)  
[magdaj@statssa.gov.za](mailto:magdaj@statssa.gov.za) (orders)

Postal address: Private Bag X44, Pretoria, 0001

*Produced by Stats SA*