



**Statistics
South Africa**

Preferred supplier of quality statistics



Statistical release

P4141

Electricity generated and available for distribution (preliminary)

September 2006

**Embargoed until:
2 November 2006
13:00**

Enquiries:

User information services
Tel: (012) 310 8600/ 8390/ 8351

Forthcoming issue:

October 2006

Expected release date

30 November 2006

Contents

Page

SUMMARY OF FINDINGS: ELECTRICITY GENERATED AND AVAILABLE FOR DISTRIBUTION (SEPTEMBER 2006) **2**

Key findings **2**

Consumption of electricity increases 2

Production of electricity increases 2

Distribution of electricity by Eskom to the provinces increases 2

Key figures **2**

Table A - Selected key figures regarding electricity generated and available for distribution for September 2006 2

Table B - Percentage change in the seasonally adjusted quantity of electricity generated and available for distribution between the current quarter and the previous quarter 3

Table C - Percentage change between the current quarter and the corresponding quarter of the previous year 3

Figure 1 - Electricity produced and available for distribution in South Africa from 2003 to 2006 4

Table 1 - Total volume of electricity available for distribution in South Africa: 2001 to 2006 5

Table 2 - Percentage change in electricity available for distribution in South Africa: 2001 to 2006 5

Table 3 - Seasonally adjusted total volume of electricity available for distribution in South Africa: 2001 to 2006 6

Table 4 - Indices of the physical volume of electricity production: 2001 to 2006 7

Table 5 - Percentage change in indices of the physical volume of electricity production: 2001 to 2006 7

Table 6 - Seasonally adjusted indices of the physical volume of electricity production: 2001 to 2006 8

Table 7 - Total volume of electricity imported: 2001 to 2006 9

Table 8 - Total volume of electricity exported: 2001 to 2006 9

Table 9a - Electricity produced and consumed in power stations, purchased and sold outside South Africa and available for distribution in South Africa 10

Table 9b - Electricity produced and consumed in power stations, purchased and sold outside South Africa and available for distribution in South Africa (concluded) 10

Table 10 - Electricity distributed by Eskom by province for 2005 and 2006 11

Explanatory notes **12**

Glossary **14**

General information **15**

SUMMARY OF FINDINGS: ELECTRICITY GENERATED AND AVAILABLE FOR DISTRIBUTION (SEPTEMBER 2006)

Key findings

Consumption of electricity increases

The estimated consumption of electricity in September 2006 increased by 3,3% (+602 Gigawatt-hours) compared with September 2005 which is higher than the growth of 0,1% reported during the same period in 2005 (see tables 2 and 9a). The estimated volume of electricity consumed (available for distribution) for the three months ending September 2006 increased by 4,7% (+2 693 Gigawatt-hours) compared with the corresponding three months ending September 2005 (see tables A and C). The estimated consumption of electricity for the first nine months of 2006 increased by 3,7% (+6 129 Gigawatt-hours) compared with the same period of 2005 (see tables A and 9b). Electricity consumption after seasonal adjustment in the three months ending September 2006 increased by 0,1% (+47 Gigawatt-hours) compared with the three months ending June 2006 (see tables A and B).

Production of electricity increases

The estimated production of electricity in September 2006 increased by 2,7% (+539 Gigawatt-hours) compared with September 2005 which is higher than the negative growth of 0,4% reported during the same period in 2005 (see tables 5 and 9a). The estimated production of electricity for the three months ending September 2006 increased by 4,6% (+2 877 Gigawatt-hours) compared with the corresponding three months ending September 2005 (see tables A and C). Furthermore, the estimated production of electricity, after seasonal adjustment, indicated a decrease of 0,2% (-108 Gigawatt-hours) in the three months ending September 2006 compared with the previous three months ending May 2006 (see table B). Electricity production by Eskom increased by 3,2% (+625 Gigawatt-hours) in September 2006 compared with September 2005 (see table 9a).

Distribution of electricity by Eskom to the provinces increases

The estimated distribution of electricity to the provinces for the first nine months of 2006 increased by 4,7% (+7 254 Gigawatt-hours) compared with the first nine months of 2005. This increase was mainly due to increases in electricity distributed to Limpopo province (+11,3% or +873 Gigawatt-hours), Gauteng (+9,0% or +3 708 Gigawatt-hours), Mpumalanga (+7,3% or +1 587 Gigawatt-hours), the Eastern Cape (+4,9% or +286 Gigawatt-hours) and the Western Cape (+4,4% or +696 Gigawatt-hours) (see table 10).

Key figures

Table A - Selected key figures regarding electricity generated and available for distribution for September 2006

Estimates	September 2006 1/	% change between September 2005 and September 2006	% change between July to September 2005 and July to September 2006	% change between January to September 2005 and January to September 2006
Electricity available for distribution (Gigawatt-hours)	18 986	+3,3	+4,7	+3,7
Index of the physical volume of electricity production (2005=100)	101,8	+2,7	+4,6	+3,6

1/ Preliminary.

Seasonally adjusted estimates	September 2006	% change between August and September 2006	% change between April to June 2006 and July to September 2006
Electricity available for distribution (Gigawatt-hours)	19 285	-1,1	+0,1
Index of the physical volume of electricity production (2005=100)	102,7	-1,4	-0,2

Table B - Percentage change in the seasonally adjusted quantity of electricity generated and available for distribution between the current quarter and the previous quarter

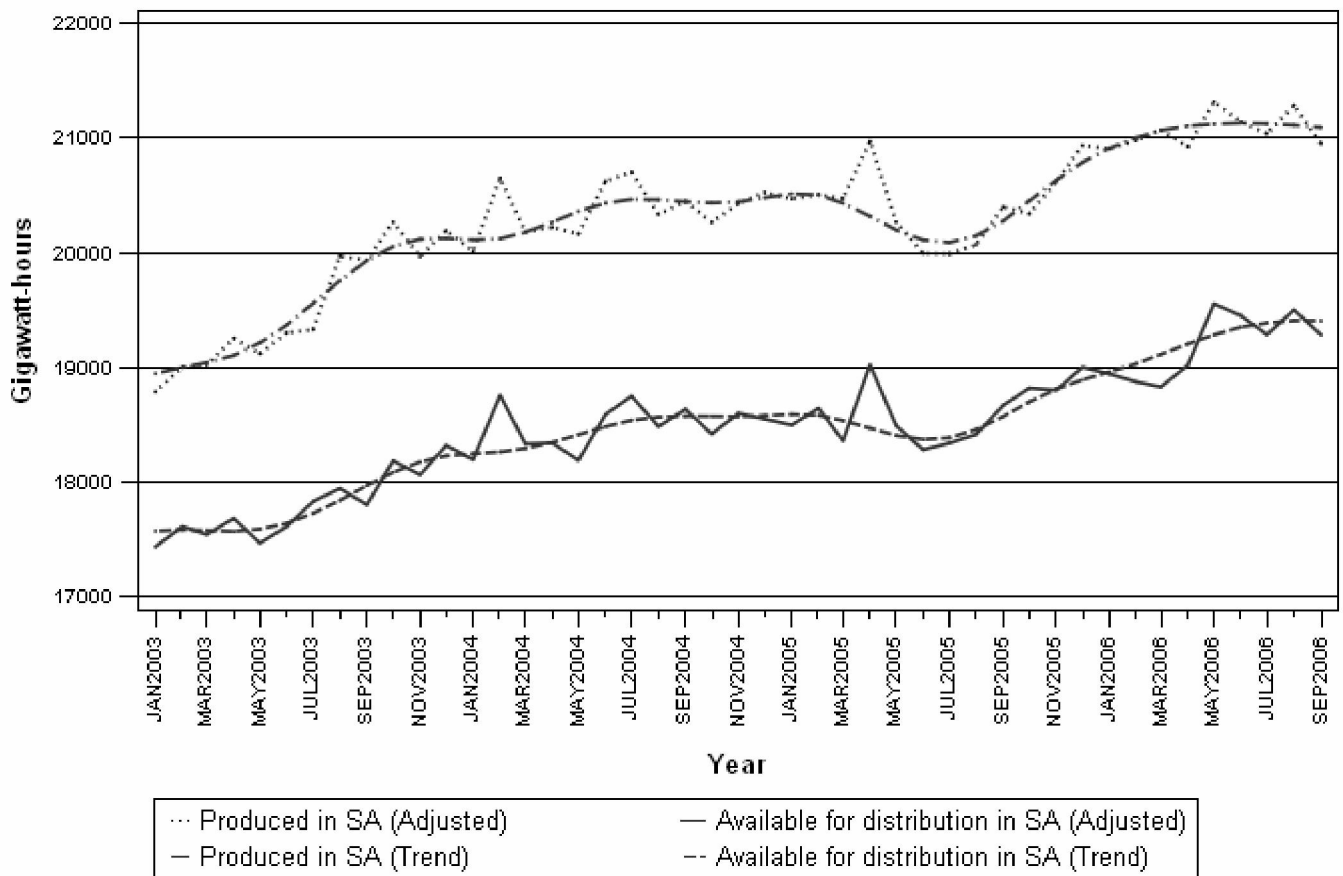
Gigawatt-hours	Seasonally adjusted quantity April to June 2006	Seasonally adjusted quantity July to September 2006	% change between April to June 2006 and July to September 2006	Quantity difference between April to June 2006 and July to September 2006
Electricity produced	+63 383	+63 275	-0,2	-108
Electricity available for distribution in South Africa	+58 027	+58 074	+0,1	+47

Table C - Percentage change between the current quarter and the corresponding quarter of the previous year

Gigawatt-hours	Actual quantity July to September 2005	Actual quantity July to September 2006	% change between July to September 2005 and July to September 2006	Quantity difference between July to September 2005 and July to September 2006
Electricity produced	62 789	65 666	+4,6	+2 877
Purchased outside South Africa (import)	2 425	2 827	+16,6	+402
Consumed in Power stations and auxiliary systems	4 604	4 828	+4,9	+224
Sold outside South Africa (export)	3 380	3 740	+10,7	+360
Electricity available for distribution in South Africa	57 232	59 925	+4,7	+2 693

Figure 1 below shows the seasonally adjusted and trend patterns for electricity produced and available for distribution in South Africa between January 2003 and September 2006. There was a gradual upward movement in the trend cycles from the beginning of the period until September 2004. From September 2004 up until January 2005 the trend cycles moved sideways. There was a declining trend in electricity production between February and September 2005. The production of electricity has steadily increased since September 2005 up until May 2006 after which the trend has flattened out. The trend of electricity available for distribution in South Africa has shown a similar pattern.

Figure 1 - Electricity produced and available for distribution in South Africa from 2003 to 2006



P J Lehohla
Statistician-General

Detailed results: Tables

Table 1 - Total volume of electricity available for distribution in South Africa: 2001 to 2006

	2001	2002	2003	2004	2005	2006
January	16 064	16 191	17 095	17 850	18 149	18 603
February	14 871	15 215	16 168	17 277	17 169	17 396
March	16 320	16 552	17 655	18 476	18 487	18 982
April	15 515	16 362	16 905	17 524	18 133	18 122
May	16 929	17 852	18 159	18 909	19 224	20 312
June	16 788	18 017	18 330	19 337	18 983	20 166
July	18 021	18 956	19 183	20 156	19 657	20 632
August	17 300	18 064	18 714	19 265	19 191	20 307
September	16 277	17 125	17 526	18 362	18 384	1/ 18 986
October	16 794	17 741	18 480	18 714	19 127	
November	15 960	17 233	17 790	18 314	18 523	
December	15 224	16 712	17 456	17 754	18 230	
Year	196 063	206 020	213 461	221 938	223 257	

1/ Preliminary.

Table 2 - Percentage change in electricity available for distribution in South Africa: 2001 to 2006

	Percentage					
	2001	2002	2003	2004	2005	2006
January	+3,6	+0,8	+5,6	+4,4	+1,7	+2,5
February	-2,3	+2,3	+6,3	+6,9	-0,6	+1,3
March	+0,6	+1,4	+6,7	+4,7	+0,1	+2,7
April	+0,8	+5,5	+3,3	+3,7	+3,5	-0,1
May	-0,8	+5,5	+1,7	+4,1	+1,7	+5,7
June	-0,2	+7,3	+1,7	+5,5	-1,8	+6,2
July	+1,5	+5,2	+1,2	+5,1	-2,5	+5,0
August	+0,5	+4,4	+3,6	+2,9	-0,4	+5,8
September	+0,6	+5,2	+2,3	+4,8	+0,1	+3,3
October	+0,5	+5,6	+4,2	+1,3	+2,2	
November	-1,2	+8,0	+3,2	+2,9	+1,1	
December	-1,1	+9,8	+4,5	+1,7	+2,7	
Year	+0,2	+5,1	+3,6	+4,0	+0,6	

Table 3 - Seasonally adjusted total volume of electricity available for distribution in South Africa: 2001 to 2006

	Gigawatt-hours						% change between current and previous month
	2001	2002	2003	2004	2005	2006	
January	16 391	16 519	17 436	18 196	18 498	18 944	-0,3
February	16 196	16 568	17 613	18 756	18 644	18 875	-0,4
March	16 217	16 442	17 543	18 334	18 360	18 830	-0,2
April	16 171	17 069	17 684	18 342	19 022	19 019	+1,0
May	16 258	17 174	17 469	18 190	18 494	19 556	+2,8
June	16 152	17 313	17 613	18 590	18 282	19 452	-0,5
July	16 719	17 596	17 831	18 750	18 340	19 286	-0,9
August	16 498	17 286	17 945	18 485	18 417	19 503	+1,1
September	16 449	17 322	17 802	18 636	18 670	19 285	-1,1
October	16 520	17 442	18 186	18 420	18 819		
November	16 232	17 504	18 064	18 601	18 802		
December	16 133	17 617	18 320	18 550	19 002		

Table 4 - Indices of the physical volume of electricity production: 2001 to 2006

	Base : 2005=100					
	2001	2002	2003	2004	2005	2006
January	84,8	84,7	89,6	95,5	97,6	99,8
February	77,5	79,0	84,7	92,2	91,7	94,0
March	84,7	85,7	92,9	98,7	100,2	103,3
April	80,5	85,1	90,1	94,7	98,1	98,0
May	88,6	94,1	97,2	102,4	102,9	108,1
June	87,0	94,8	98,5	105,0	101,6	107,3
July	95,6	99,4	102,5	109,5	105,5	110,8
August	92,9	94,5	102,4	104,3	103,0	109,1
September	86,4	90,3	97,0	99,5	99,1	1/ 101,8
October	88,4	94,3	102,2	102,1	102,5	
November	83,8	91,5	96,4	98,5	99,4	
December	79,2	87,4	94,0	96,0	98,2	
Year	85,8	90,1	95,6	99,9	100,0	

1/ Preliminary.

Table 5 - Percentage change in indices of the physical volume of electricity production: 2001 to 2006

	2001	2002	2003	2004	2005	2006
January	+6,5	-0,1	+5,8	+6,6	+2,2	+2,3
February	-1,1	+1,9	+7,2	+8,9	-0,5	+2,5
March	-2,4	+1,2	+8,4	+6,2	+1,5	+3,1
April	-2,4	+5,7	+5,9	+5,1	+3,6	-0,1
May	-3,1	+6,2	+3,3	+5,3	+0,5	+5,1
June	-3,5	+9,0	+3,9	+6,6	-3,2	+5,6
July	+3,1	+4,0	+3,1	+6,8	-3,7	+5,0
August	+2,4	+1,7	+8,4	+1,9	-1,2	+5,9
September	+1,4	+4,5	+7,4	+2,6	-0,4	+2,7
October	-0,3	+6,7	+8,4	-0,1	+0,4	
November	-1,8	+9,2	+5,4	+2,2	+0,9	
December	-1,9	+10,4	+7,6	+2,1	+2,3	
Year	-0,3	+5,0	+6,2	+4,4	+0,1	

The percentage change is the change in the index of the physical volume of electricity production of the relevant year compared with the index of the physical volume of electricity production of the previous year expressed as a percentage.

Table 6 - Seasonally adjusted indices of the physical volume of electricity production: 2001 to 2006

	Base : 2005=100						% change between current and previous month
	2001	2002	2003	2004	2005	2006	
January	86,8	86,8	92,0	98,1	100,4	102,7	+0,1
February	85,0	86,7	93,0	101,0	100,3	102,7	-0,0
March	84,8	85,8	93,1	98,8	100,2	103,3	+0,6
April	84,6	89,3	94,4	99,2	102,8	102,7	-0,6
May	85,2	90,6	93,7	98,8	99,3	104,4	+1,7
June	83,4	90,9	94,6	101,0	97,9	103,5	-0,9
July	88,1	91,7	94,8	101,5	98,0	103,0	-0,5
August	88,4	90,1	97,8	99,6	98,4	104,2	+1,2
September	86,8	90,7	97,7	100,2	99,9	102,7	-1,4
October	85,9	91,6	99,3	99,3	99,7		
November	85,2	93,0	97,9	100,1	101,0		
December	84,5	92,6	98,9	100,6	102,6		

Table 7 - Total volume of electricity imported: 2001 to 2006

Month	Gigawatt-hours					
	2001	2002	2003	2004	2005	2006
January	569	670	705	828	729	872
February	488	643	637	811	714	646
March	665	783	706	863	533	581
April	774	733	547	641	598	587
May	629	658	569	547	849	879
June	797	704	518	560	813	881
July	479	702	792	607	856	926
August	282	721	424	618	883	930
September	507	637	266	590	686	1/ 971
October	713	454	272	536	836	
November	636	477	583	746	865	
December	708	691	720	679	837	
Year	7 247	7 873	6 739	8 026	9 199	

1/ Preliminary.

Table 8 - Total volume of electricity exported: 2001 to 2006

Month	Gigawatt-hours					
	2001	2002	2003	2004	2005	2006
January	616	558	578	1 037	1 030	1 056
February	470	478	508	977	901	1 050
March	498	529	607	1 027	968	1 129
April	463	525	619	951	991	1 017
May	508	578	805	944	1 083	1 046
June	496	601	798	1 057	1 096	1 102
July	543	614	944	1 140	1 102	1 239
August	569	605	1 030	1 049	1 144	1 262
September	581	628	1 051	1 048	1 134	1/ 1 239
October	630	626	1 116	1 112	1 161	
November	598	600	1 025	1 082	1 119	
December	547	608	1 055	1 029	1 155	
Year	6 519	6 950	10 136	12 453	12 884	

1/ Preliminary.

Table 9a - Electricity produced and consumed in power stations, purchased and sold outside South Africa and available for distribution in South Africa

		Gigawatt-hours				
		September 2005	August 2006	September 2006 1/	% Change between September 2005 and September 2006	Difference between September 2005 and September 2006
Total - All producers	Electricity produced	20 232	22 273	20 771	+2,7	+539
	Purchased outside South Africa (import)	686	930	971	+41,5	+285
	Consumed in power stations and auxiliary systems	1 402	1 635	1 517	+8,2	+115
	Sold outside South Africa (export)	1 134	1 262	1 239	+9,3	+105
	Electricity available for distribution in South Africa	18 384	20 307	18 986	+3,3	+602
ESKOM	Electricity produced	19 271	21 306	19 896	+3,2	+625
	Purchased outside South Africa (import)	686	930	971	+41,5	+285
	Consumed in power stations and auxiliary systems	1 319	1 548	1 451	+10,0	+132
	Sold outside South Africa (export)	1 134	1 262	1 239	+9,3	+105
	Electricity available for distribution in South Africa	17 505	19 426	18 177	+3,8	+672

1/ Preliminary.

Table 9b - Electricity produced and consumed in power stations, purchased and sold outside South Africa and available for distribution in South Africa (concluded)

		Gigawatt-hours			
		January to September 2005	January to September 2006	% Change between January to September 2005 and January to September 2006	Difference between January to September 2005 and January to September 2006
Total - All producers	Electricity produced	183 660	190 245	+3,6	+6 585
	Purchased outside South Africa (import)	6 661	7 273	+9,2	+612
	Consumed in power stations and auxiliary systems	13 497	13 871	+2,8	+374
	Sold outside South Africa (export)	9 449	10 140	+7,3	+691
	Electricity available for distribution in South Africa	167 377	173 506	+3,7	+6 129
ESKOM	Electricity produced	174 508	182 530	+4,6	+8 022
	Purchased outside South Africa (import)	6 661	7 273	+9,2	+612
	Consumed in power stations and auxiliary systems	12 663	13 151	+3,9	+488
	Sold outside South Africa (export)	9 449	10 140	+7,3	+691
	Electricity available for distribution in South Africa	159 059	166 511	+4,7	+7 452

Table 10 - Electricity distributed by Eskom by province for 2005 and 2006 1/

		Gigawatt-hours									
		Western Cape	Eastern Cape	Northern Cape	Free State	Kwazulu-Natal	North West	Gauteng	Mpumalanga	Limpopo	Total South Africa
2005	January	1 795	616	424	765	3 599	2 172	4 402	2 206	858	16 837
	February	1 516	585	380	727	3 406	2 056	4 052	2 285	815	15 823
	March	1 650	633	437	747	3 642	2 171	4 494	2 378	854	17 005
	April	1 583	627	335	742	3 534	2 089	4 489	2 676	676	16 751
	May	1 871	667	358	779	3 558	2 173	4 730	2 581	909	17 626
	June	1 860	672	359	761	3 536	2 068	4 760	2 449	899	17 364
	July	1 895	690	380	793	3 713	2 042	5 057	2 498	925	17 993
	August	1 991	659	375	785	3 666	1 937	4 866	2 319	932	17 530
	September	1 837	672	385	735	3 531	1 996	4 493	2 373	860	16 882
	October	1 831	666	424	746	3 712	2 050	4 776	2 703	861	17 769
	November	1 790	632	390	700	3 589	2 070	4 672	2 467	821	17 131
	December	1 826	594	402	700	3 563	2 041	4 316	2 534	871	16 847
	Year	21 445	7 713	4 649	8 980	43 049	24 865	55 107	29 469	10 281	205 558
Year to date	15 998	5 821	3 433	6 834	32 185	18 704	41 343	21 765	7 728	153 811	
2006	January	1 852	626	388	712	3 611	2 073	4 442	2 635	904	17 242
	February	1 703	595	339	721	3 410	1 934	4 129	2 343	1 023	16 197
	March	1 879	639	394	740	3 747	2 019	4 690	2 684	890	17 682
	April	1 809	591	357	730	3 572	1 904	4 514	2 550	874	16 901
	May	1 906	665	374	809	3 826	2 082	5 525	2 784	955	18 925
	June	1 832	670	363	732	3 870	2 093	5 476	2 648	964	18 647
	July	1 946	788	399	810	3 657	2 151	5 707	2 661	998	19 116
	August	1 939	780	391	826	3 563	2 103	5 605	2 560	1 000	18 767
	September 2/	1 828	753	409	736	3 456	1 963	4 963	2 487	993	17 588
	Year to date	16 694	6 107	3 414	6 816	32 712	18 322	45 051	23 352	8 601	161 065

1/ Wholesale energy as delivered by Eskom to the various provinces.

2/ Preliminary.

Explanatory notes

Introduction	1	Statistics South Africa (Stats SA) conducts a monthly sample survey of the electricity industry covering electricity undertakings and establishments (branches). This statistical release contains information regarding the number of electricity units generated and available for distribution in South Africa, the number of units purchased and sold outside South Africa and the number of units distributed by Eskom by province on a monthly basis. Both actual and seasonally adjusted figures are published.
	2	This statistical release reflects indices of the physical volume of electricity production on the basis of 2005=100. In accordance with international practice, the indices have to be rebased every five years to a new base year.
	3	In order to improve timeliness of the publication, some information for the current month may have been estimated due to late submission by respondents. These estimates will be revised in the next statistical release(s) as soon as actual information is available.
Purpose of the survey	4	The results of the monthly electricity generated and available for distribution survey are used to compile estimates of the Gross Domestic Product (GDP) and its components, which are used in monitoring the state of the economy and formulation of economic policy.
Scope of the survey	5	This survey covers electricity undertakings and establishments conducting activities concerned with the generation or transmission and distribution of electricity, including electrical power installations, which, as subsidiary divisions of undertakings, produce electricity for regular use by these undertakings.
Classification	6	The 1993 edition of the <i>Standard Industrial Classification of all Economic Activities (SIC)</i> , Fifth Edition, Report No. 09-90-02, was used to classify the statistical units in the survey. The SIC is based on the 1990 <i>International Standard Industrial Classification of all Economic Activities (ISIC)</i> with suitable adaptations for local conditions. Each statistical unit is classified to an industry, which reflects the predominant activity of the electricity undertaking or establishment.
Response rate	7	The response rate for the survey on electricity generated and available for distribution for September 2006 was 99%.
Statistical unit	8	The basic statistical unit for the collection of information is the electricity undertaking or establishment. The electricity undertaking or establishment is the smallest economic unit that functions as a separate entity. Each statistical unit is classified to an industry (see paragraph 5).
Survey methodology and design	9	All statistical units are stratified by type of economic activity according to the <i>Standard Industrial Classification of all Economic Activities (SIC)</i> and measure of size, where measure of size is the volume of electricity generated by the electricity undertaking or establishment. All large undertakings or establishments (size category one cases) are completely enumerated. A sample is drawn from medium and small size undertakings and establishments by systematically selecting undertakings or establishments within each size category. An electricity undertaking or establishment with a total generating capacity of less than 500 kilowatt is excluded from the sample.
	10	The survey is conducted by mail each month collecting information from a sample of 22 electricity undertakings or establishments.

Monthly production indices	11	The calculation of the monthly production indices is based on the number of electricity units produced.
Benchmarking	12	The index of physical volume of electricity production should provide an accurate reflection of the trend of activities of the relevant industry. The level of activities as measured by the monthly electricity generated and available for distribution survey is based on information received from a sample of electricity undertakings and establishments, which are weighted according to the original sample, designed in order to represent the population of electricity undertakings and establishments. It is necessary to adjust the level of activities as measured by the monthly sample survey to the level of activities as measured periodically by the Census of electricity, gas and steam. This procedure, whereby the latest results of an economic census are used to compile more accurate level estimates for a certain year, is known as benchmarking.
	13	The results of the 1995 Census of electricity, gas and steam served as benchmarks to verify or adjust the level of the monthly physical volume of electricity production indices collected through the monthly sample survey. The level adjustments were done on the volume indices for July of the relevant census year (the 1995 census year covered the period 1 January 1995 to 31 December 1995 and therefore, the benchmarking was done using the index of July 1995 as reference point).
Seasonal adjustment	14	Seasonally adjusted estimates of all items are generated each month, using the X-11 Seasonal Adjustment Program developed by US Bureau of the Census Economic Research and Analyses Division, 1968. Seasonal adjustment is a means of removing the estimated effects of normal seasonal variation from the series so that the effects of other influences on the series can be more clearly recognised. Seasonal adjustment does not aim to remove irregular or non-seasonal influences, which may be present in any particular month. Influences that are volatile or unsystematic can still make it difficult to interpret the movement of the series even after adjustment for seasonal variations. This means the month-to-month movements of seasonally adjusted estimates may not be reliable indicators of trend behavior.
Trend cycle	15	The trend is the long-term pattern or movement of a time series. The X-11 Seasonal Adjustment Program is used for smoothing seasonally adjusted estimates.
Related publications	16	Users may also wish to refer to the following publications which are available from Stats SA - <ul style="list-style-type: none"> • <i>Bulletin of Statistics.</i> • <i>SA Statistics.</i>
Unpublished statistics	17	In some cases Stats SA can also make available statistics, which are not published. The statistics can be made available as computer printouts, on diskette or CD. Generally a charge is made for providing unpublished statistics.
Rounding-off figures	18	The figures in the tables have, where necessary, been rounded off to the nearest digit shown. There may, therefore, be slight discrepancies between the sums of the constituent items and the totals shown.
Pre-release policy	19	Stats SA pre-release policy may be inspected at its website, www.statssa.gov.za .

Glossary

Electricity undertaking	An electricity undertaking is an undertaking concerned with the generation or transmission and distribution of electricity, including electrical power installations, which as subsidiary divisions of undertakings produce electricity for regular use by these undertakings.										
Index of physical volume of electricity production	A statistical measure of the change in the volume of production of electricity in a given period and the volume of production of electricity in the base period. The base period is 2005. The production in the base period is set at 100.										
Industry	An industry consists of a group of undertakings or establishments engaged in the same or similar kinds of economic activity. Industries are defined in the 1993 <i>System of National Accounts (1993 SNA)</i> in the same way as in the <i>Standard Industrial Classification of all Economic Activities (SIC)</i> , Fifth Edition, Report No. 09-90-02.										
Unit of electricity	One gigawatt-hour of electricity is equal to one million kilowatt-hours. A kilowatt-hour is the basic unit of electrical energy equal to one kilowatt of power supplied to or taken from an electric circuit steadily for one hour. One kilowatt-hour equals one thousand watt-hours.										
Symbols and abbreviations	<table><tr><td>GDP</td><td>Gross Domestic Product</td></tr><tr><td>ISIC</td><td>International Standard Industrial Classification</td></tr><tr><td>SIC</td><td>Standard Industrial Classification of all Economic Activities</td></tr><tr><td>Stats SA</td><td>Statistics South Africa</td></tr><tr><td>*</td><td>Revised figures</td></tr></table>	GDP	Gross Domestic Product	ISIC	International Standard Industrial Classification	SIC	Standard Industrial Classification of all Economic Activities	Stats SA	Statistics South Africa	*	Revised figures
GDP	Gross Domestic Product										
ISIC	International Standard Industrial Classification										
SIC	Standard Industrial Classification of all Economic Activities										
Stats SA	Statistics South Africa										
*	Revised figures										

General information

Stats SA publishes approximately 300 different statistical releases each year. It is not economically viable to produce them in more than one of South Africa's eleven official languages. Since the releases are used extensively, not only locally but also by international economic and social-scientific communities, Stats SA releases are published in English only.

Stats SA has copyright on this publication. Users may apply the information as they wish, provided that they acknowledge Stats SA as the source of the basic data wherever they process, apply, utilise, publish or distribute the data: and also that they specify that the relevant application and analysis (where applicable) result from their own processing of the data.

Advanced release calendar

An advanced release calendar is disseminated on www.statssa.gov.za

Stats SA products

A complete set of Stats SA publications is available at the Stats SA Library and the following libraries:

National Library of South Africa, Pretoria Division
National Library of South Africa, Cape Town Division
Natal Society Library, Pietermaritzburg
Library of Parliament, Cape Town
Bloemfontein Public Library
Johannesburg Public Library
Eastern Cape Library Services, King William's Town
Central Regional Library, Polokwane
Central Reference Library, Nelspruit
Central Reference Collection, Kimberley
Central Reference Library, Mmabatho

Stats SA also provides a subscription service.

Electronic services

A large range of data is available via on-line services, diskette, CD and computer printouts. For more details about our electronic data services, contact (012) 310 8600/8390/8351/8496/4892/8095.

You can visit us on the Internet at: www.statssa.gov.za

General enquiries

Telephone number: (012) 310 8911 X2042 (technical enquiries)
(012) 310 8161 (orders)
(012) 310 4883/ 4885/ 8018 (library)

Fax number: (012) 310 8664 (technical enquiries)

email: gerdab@statssa.gov.za (technical enquiries)
nicolaic@statssa.gov.za (technical enquiries)
info@statssa.gov.za (user information services)
distribution@statssa.gov.za (orders)

Postal address: Private Bag X44, Pretoria, 0001

Produced by Stats SA