



The South Africa I know, the home I understand



Statistical release

P4141

Electricity generated and available for distribution (Preliminary)

October 2014

**Embargoed until:
4 December 2014
13:00**

Enquiries:

User Information Services
Tel: (012) 310 8600

Forthcoming issue:

November 2014

Expected release date:

8 January 2015

Contents

Results for October 2014	2
Table A – Selected key figures regarding electricity generated and available for distribution.....	2
Table B – Comparison of the seasonally adjusted volume of electricity generated and available for distribution between the three months ended October 2014 and the previous three months.....	3
Table C – Comparison of actual estimates between the three months ended October 2014 and the three months ended October 2013.....	3
Figure 1 – Electricity produced and available for distribution in South Africa, seasonally adjusted and trend.....	3
Tables	4
Table 1 – Total volume of electricity available for distribution in South Africa: 2009–2014.....	4
Table 2 – Annual percentage change in electricity available for distribution in South Africa: 2009–2014.....	4
Table 3 – Seasonally adjusted total volume of electricity available for distribution in South Africa: 2009–2014.....	4
Table 4 – Indices of the physical volume of electricity production: 2009–2014.....	5
Table 5 – Annual percentage change in indices of the physical volume of electricity production: 2009–2014.....	5
Table 6 – Seasonally adjusted indices of the physical volume of electricity production: 2009–2014.....	5
Table 7 – Total volume of electricity imported: 2009–2014.....	6
Table 8 – Total volume of electricity exported: 2009–2014.....	6
Table 9a – Electricity produced and consumed in power stations, purchased and sold outside South Africa and available for distribution in South Africa (monthly figures).....	7
Table 9b – Electricity produced and consumed in power stations, purchased and sold outside South Africa and available for distribution in South Africa (cumulative figures).....	7
Table 10 – Total volume of electricity delivered by Eskom to provinces for 2013 and 2014.....	8
Explanatory notes	9
Glossary	11
Technical enquiries	11
General information	12

Results for October 2014

Table A – Selected key figures regarding electricity generated and available for distribution

Actual estimates	October 2014	% change between October 2013 and October 2014	% change between August to October 2013 and August to October 2014	% change between January to October 2013 and January to October 2014
Electricity available for distribution (Gigawatt-hours)	19 589	-1,0	-1,5	-0,6
Index of the physical volume of electricity production (2010=100)	98,9	-1,0	-1,3	-1,3

Seasonally adjusted estimates	October 2014	% change between September and October 2014	% change between May to July 2014 and August to October 2014
Electricity available for distribution (Gigawatt-hours)	19 378	-0,5	0,8
Index of the physical volume of electricity production (2010=100)	97,0	-1,4	0,6

Consumption of electricity

The actual estimated volume of electricity consumption decreased by 1,0% year-on-year in October 2014. Seasonally adjusted electricity consumption decreased by 0,5% month-on-month in October 2014, following a month-on-month increase of 2,2% in September 2014.

Production of electricity

Electricity production decreased by 1,0% year-on-year in October 2014, contributing to the 1,3% decrease in the first ten months of 2014 compared with the same period of 2013. Seasonally adjusted electricity production decreased by 1,4% month-on-month in October 2014, following a month-on-month increase of 2,0% in September 2014.

Electricity delivered by Eskom to the provinces

The total volume of electricity delivered by Eskom to the provinces decreased by 2,1% (-390 Gigawatt-hours) in October 2014 compared with October 2013. Decreases were reported in seven of the nine provinces.

Table B – Comparison of the seasonally adjusted volume of electricity generated and available for distribution between the three months ended October 2014 and the previous three months

Gigawatt-hours	Seasonally adjusted volume May to July 2014	Seasonally adjusted volume August to October 2014	% change between May to July 2014 and August to October 2014	Quantity difference between May to July 2014 and August to October 2014
Electricity produced	62 762	63 159	0,6	397
Electricity available for distribution in South Africa	57 465	57 898	0,8	433

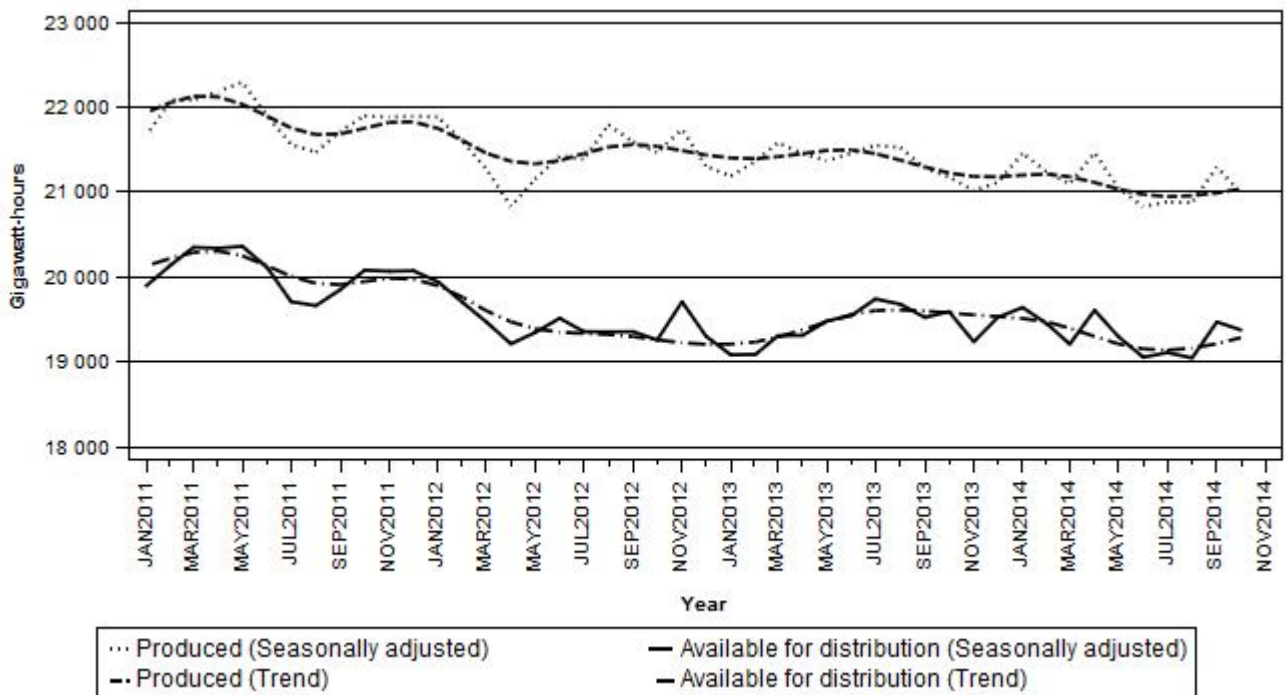
Table C – Comparison of actual estimates between the three months ended October 2014 and the three months ended October 2013

Gigawatt-hours	Actual volume August to October 2013	Actual volume August to October 2014	% change between August to October 2013 and August to October 2014	Quantity difference between August to October 2013 and August to October 2014
Electricity produced	65 200	64 371	-1,3	-829
Purchased outside South Africa (import) 1/	2 660	2 888	8,6	228
Consumed in power stations and auxiliary systems	4 532	4 686	3,4	154
Sold outside South Africa (export) 2/	3 588	3 724	3,8	136
Electricity available for distribution in South Africa	59 739	58 850	-1,5	-889

1/ Physical energy flowing into South Africa as measured by the metering systems at the South African borders.

2/ Physical energy flowing out of South Africa as measured by the metering systems at the South African borders.

Figure 1 – Electricity produced and available for distribution in South Africa, seasonally adjusted and trend



PJ Lehohla
Statistician-General

Tables

Table 1 – Total volume of electricity available for distribution in South Africa: 2009–2014

Month	Gigawatt-hours					
	2009	2010	2011	2012	2013	2014
January	17 919	19 396	19 616	19 676	18 860	19 409
February	16 757	18 181	18 455	18 783	17 493	17 859
March	18 694	20 186	20 518	19 623	19 202	19 328
April	17 934	19 102	19 539	18 466	18 762	18 810
May	19 548	20 435	20 938	19 869	19 991	19 794
June	19 819	20 800	20 914	20 274	20 270	19 721
July	21 151	21 307	21 162	20 743	21 119	20 454
August	20 398	20 540	20 617	20 345	20 689	20 044
September	19 382	19 256	19 619	19 100	19 269	19 217
October	19 899	20 371	20 198	19 413	19 781	1/ 19 589
November	19 248	19 702	19 763	19 426	18 968	
December	18 850	18 996	19 189	18 456	18 701	
Year	229 599	238 272	240 528	234 174	233 105	

1/ Preliminary.

Table 2 – Annual percentage change in electricity available for distribution in South Africa: 2009–2014

Month	% change 2/					
	2009	2010	2011	2012	2013	2014
January	-6,9	8,2	1,1	0,3	-4,1	2,9
February	-10,2	8,5	1,5	1,8	-6,9	2,1
March	-4,6	8,0	1,6	-4,4	-2,1	0,7
April	-6,2	6,5	2,3	-5,5	1,6	0,3
May	-4,0	4,5	2,5	-5,1	0,6	-1,0
June	-3,4	4,9	0,5	-3,1	-0,0	-2,7
July	-2,1	0,7	-0,7	-2,0	1,8	-3,1
August	-1,6	0,7	0,4	-1,3	1,7	-3,1
September	-1,7	-0,7	1,9	-2,6	0,9	-0,3
October	-1,2	2,4	-0,8	-3,9	1,9	-1,0
November	3,3	2,4	0,3	-1,7	-2,4	
December	7,5	0,8	1,0	-3,8	1,3	
Year	-2,7	3,8	0,9	-2,6	-0,5	

2/ The annual percentage change is the change in the volume of electricity available for distribution of the relevant month of the current year compared with the corresponding month of the previous year expressed as a percentage.

Table 3 – Seasonally adjusted total volume of electricity available for distribution in South Africa: 2009–2014

Month	Gigawatt-hours						% change between current and previous month
	2009	2010	2011	2012	2013	2014	
January	18 203	19 711	19 899	19 943	19 085	19 643	0,6
February	18 291	19 856	20 147	19 698	19 090	19 447	-1,0
March	18 560	20 020	20 351	19 474	19 310	19 211	-1,2
April	18 718	19 899	20 340	19 214	19 314	19 610	2,1
May	18 929	19 841	20 363	19 346	19 483	19 298	-1,6
June	19 049	19 996	20 113	19 516	19 548	19 056	-1,3
July	19 611	19 804	19 711	19 358	19 743	19 111	0,3
August	19 479	19 611	19 664	19 355	19 681	19 048	-0,3
September	19 608	19 480	19 856	19 358	19 525	19 472	2,2
October	19 841	20 283	20 082	19 259	19 594	19 378	-0,5
November	19 612	20 049	20 069	19 710	19 238		
December	19 658	19 852	20 075	19 304	19 526		

Table 4 – Indices of the physical volume of electricity production: 2009–2014

Month	Base: 2010=100					
	2009	2010	2011	2012	2013	2014
January	89,7	97,6	98,1	99,2	96,2	97,5
February	83,5	91,1	93,3	93,8	90,5	90,0
March	93,7	101,3	103,0	99,3	99,6	98,4
April	90,7	96,2	98,9	92,9	96,7	95,7
May	98,6	102,3	105,9	100,3	101,2	99,6
June	98,8	103,8	104,6	102,2	102,2	99,1
July	106,4	106,6	106,8	105,7	106,4	103,2
August	102,7	103,2	103,7	105,4	104,2	101,2
September	98,5	97,0	99,4	98,7	97,3	97,4
October	99,6	104,6	103,1	101,1	99,9	1/ 98,9
November	96,8	100,0	100,1	99,5	96,2	
December	94,6	96,3	96,7	94,0	93,2	
Year	96,1	100,0	101,1	99,3	98,6	

1/ Preliminary.

Table 5 – Annual percentage change in indices of the physical volume of electricity production: 2009–2014

Month	% change 2/					
	2009	2010	2011	2012	2013	2014
January	-9,7	8,8	0,5	1,1	-3,0	1,4
February	-11,3	9,1	2,4	0,5	-3,5	-0,6
March	-5,9	8,1	1,7	-3,6	0,3	-1,2
April	-5,7	6,1	2,8	-6,1	4,1	-1,0
May	-4,6	3,8	3,5	-5,3	0,9	-1,6
June	-3,7	5,1	0,8	-2,3	-0,0	-3,0
July	-2,0	0,2	0,2	-1,0	0,7	-3,0
August	-1,3	0,5	0,5	1,6	-1,1	-2,9
September	-0,3	-1,5	2,5	-0,7	-1,4	0,1
October	-3,5	5,0	-1,4	-1,9	-1,2	-1,0
November	1,1	3,3	0,1	-0,6	-3,3	
December	7,1	1,8	0,4	-2,8	-0,9	
Year	-3,4	4,1	1,1	-1,8	-0,7	

2/ The annual percentage change is the change in the index of the physical volume of electricity production of the relevant month of the current year compared with the corresponding month of the previous year expressed as a percentage.

Table 6 – Seasonally adjusted indices of the physical volume of electricity production: 2009–2014

Month	Base: 2010=100						% change between current and previous month
	2009	2010	2011	2012	2013	2014	
January	91,6	99,7	100,1	101,1	97,9	99,2	1,6
February	91,6	99,9	102,1	99,8	98,7	98,1	-1,1
March	93,0	100,4	102,1	98,3	99,7	97,5	-0,6
April	94,5	99,9	102,5	96,2	99,1	99,2	1,7
May	95,3	99,3	103,0	97,7	98,7	97,3	-1,9
June	95,5	100,4	101,2	99,0	99,2	96,2	-1,1
July	98,7	99,1	99,6	98,8	99,6	96,5	0,3
August	98,2	98,8	99,2	100,7	99,5	96,5	-0,0
September	99,6	98,0	100,4	99,8	98,3	98,4	2,0
October	97,9	102,8	101,2	99,2	97,9	97,0	-1,4
November	98,0	101,1	101,1	100,5	97,1		
December	98,7	100,7	101,2	98,4	97,6		

Table 7 – Total volume of electricity imported: 2009–2014 1/

Month	Gigawatt-hours					
	2009	2010	2011	2012	2013	2014
January	1 102	1 122	1 088	1 085	676	1 020
February	999	995	730	1 063	407	873
March	1 064	1 040	1 112	945	455	854
April	906	931	912	1 068	559	664
May	937	1 074	907	1 066	919	902
June	1 088	1 019	1 009	1 044	881	882
July	1 040	1 117	979	903	965	945
August	1 072	1 109	1 108	465	930	935
September	920	1 068	974	474	839	867
October	1 115	770	911	451	891	2/ 1 086
November	940	1 018	1 073	654	854	
December	1 112	930	1 087	788	1 052	
Year	12 295	12 193	11 890	10 006	9 428	

1/ Physical energy flowing into South Africa as measured by the metering systems at the South African borders.

2/ Preliminary.

Table 8 – Total volume of electricity exported: 2009–2014 1/

Month	Gigawatt-hours					
	2009	2010	2011	2012	2013	2014
January	1 096	1 217	1 133	1 247	1 115	1 183
February	979	1 128	1 069	1 212	1 095	1 085
March	1 100	1 252	1 279	1 242	1 187	1 219
April	1 086	1 170	1 190	1 174	1 132	999
May	1 109	1 177	1 241	1 322	1 196	1 046
June	1 175	1 132	1 174	1 335	1 158	1 092
July	1 223	1 206	1 247	1 350	1 183	1 171
August	1 235	1 275	1 298	1 295	1 185	1 167
September	1 285	1 248	1 288	1 165	1 166	1 194
October	1 288	1 338	1 378	1 300	1 237	2/ 1 363
November	1 213	1 316	1 381	1 233	1 219	
December	1 263	1 209	1 286	1 160	1 056	
Year	14 052	14 668	14 964	15 035	13 929	

1/ Physical energy flowing out of South Africa as measured by the metering systems at the South African borders.

2/ Preliminary.

Table 9a – Electricity produced and consumed in power stations, purchased and sold outside South Africa and available for distribution in South Africa (monthly figures)

		Gigawatt-hours				
		October 2013	September 2014	October 2014 1/	% change between October 2013 and October 2014	Difference between October 2013 and October 2014
Total - All producers	Electricity produced	21 601	21 072	21 406	-1,0	-195
	Purchased outside South Africa (import) 2/	891	867	1 086	21,9	195
	Consumed in power stations and auxiliary systems	1 474	1 528	1 541	4,5	67
	Sold outside South Africa (export) 3/	1 237	1 194	1 363	10,2	126
	Electricity available for distribution in South Africa	19 781	19 217	19 589	-1,0	-192
ESKOM	Electricity produced	20 694	20 008	20 354	-1,6	-340
	Purchased outside South Africa (import) 2/	891	867	1 086	21,9	195
	Consumed in power stations and auxiliary systems	1 420	1 461	1 470	3,5	50
	Sold outside South Africa (export) 3/	1 237	1 194	1 363	10,2	126
	Electricity available for distribution in South Africa	18 928	18 220	18 607	-1,7	-321

1/ Preliminary.

2/ Physical energy flowing into South Africa as measured by the metering systems at the South African borders.

3/ Physical energy flowing out of South Africa as measured by the metering systems at the South African borders.

Table 9b – Electricity produced and consumed in power stations, purchased and sold outside South Africa and available for distribution in South Africa (cumulative figures)

		Gigawatt-hours			
		January to October 2013	January to October 2014 1/	% change between January to October 2013 and January to October 2014	Difference between January to October 2013 and January to October 2014
Total - All producers	Electricity produced	215 084	212 212	-1,3	-2 872
	Purchased outside South Africa (import) 2/	7 522	9 028	20,0	1 506
	Consumed in power stations and auxiliary systems	15 518	15 495	-0,1	-23
	Sold outside South Africa (export) 3/	11 654	11 519	-1,2	-135
	Electricity available for distribution in South Africa	195 436	194 225	-0,6	-1 211
ESKOM	Electricity produced	205 722	202 046	-1,8	-3 676
	Purchased outside South Africa (import) 2/	7 522	9 028	20,0	1 506
	Consumed in power stations and auxiliary systems	14 858	14 746	-0,8	-112
	Sold outside South Africa (export) 3/	11 654	11 519	-1,2	-135
	Electricity available for distribution in South Africa	186 733	184 806	-1,0	-1 927

1/ Preliminary.

2/ Physical energy flowing into South Africa as measured by the metering systems at the South African borders.

3/ Physical energy flowing out of South Africa as measured by the metering systems at the South African borders.

Table 10 – Total volume of electricity delivered by Eskom to provinces for 2013 and 2014 1/

Period		Gigawatt-hours									Total South Africa
		Western Cape	Eastern Cape	Northern Cape	Free State	KwaZulu-Natal	North West	Gauteng	Mpumalanga	Limpopo	
2013	January	1 932	796	490	667	3 409	2 022	4 432	2 911	910	17 569
	February	1 825	751	441	618	3 137	1 900	4 216	2 517	811	16 216
	March	1 956	839	476	630	3 454	1 973	4 655	2 781	930	17 694
	April	1 833	802	416	615	3 351	2 000	4 754	2 732	901	17 404
	May	1 941	753	441	644	3 459	2 088	5 347	2 987	913	18 573
	June	1 902	741	440	689	3 425	2 149	5 344	3 091	994	18 775
	July	1 963	909	461	734	3 636	2 212	5 646	2 973	1 061	19 595
	August	1 970	869	456	702	3 576	2 185	5 415	2 969	1 060	19 202
	September	1 898	786	449	619	3 397	2 114	4 850	2 751	1 085	17 949
	October	1 885	810	479	660	3 520	2 158	4 938	2 942	1 058	18 450
	November	1 756	745	469	632	3 371	2 117	4 716	2 832	996	17 634
	December	1 853	737	449	601	3 331	2 057	4 516	2 741	1 008	17 293
	Year	22 714	9 538	5 467	7 811	41 066	24 975	58 829	34 227	11 727	216 354
	Year to date	19 105	8 056	4 549	6 578	34 364	20 801	49 597	28 654	9 723	181 427
2014	January	1 963	674	400	654	3 569	2 093	4 559	2 868	982	17 762
	February	1 887	621	349	604	3 295	1 934	4 370	2 649	907	16 616
	March	1 967	750	365	649	3 507	1 975	4 747	2 842	973	17 775
	April	1 882	753	346	641	3 411	1 887	4 634	2 770	987	17 311
	May	1 953	799	368	662	3 538	1 985	5 121	2 922	1 029	18 377
	June	1 927	789	367	642	3 419	1 835	5 447	2 900	1 028	18 354
	July	2 050	778	361	665	3 397	2 174	5 584	2 962	1 019	18 990
	August	1 944	750	350	646	3 311	2 165	5 421	2 917	1 017	18 521
	September	1 865	715	356	619	3 271	1 965	5 066	2 828	1 057	17 742
	October 2/	1 930	721	359	639	3 405	2 104	4 974	2 908	1 020	18 060
	Year to date	19 368	7 350	3 621	6 421	34 123	20 117	49 923	28 566	10 019	179 508

1/ Wholesale energy (Gigawatt-hours) as delivered by Eskom to the various provinces.

2/ Preliminary.

Explanatory notes

Introduction	1	Statistics South Africa (Stats SA) conducts a monthly sample survey of the electricity industry covering electricity undertakings and establishments (branches). This statistical release contains information regarding the volume of electricity units generated and available for distribution in South Africa, the volume of units purchased and sold outside South Africa and the volume of units distributed by Eskom by province on a monthly basis. Both actual and seasonally adjusted figures are published.
	2	This statistical release reflects indices of the physical volume of electricity production on the basis of 2010=100. In accordance with international practice, the indices have to be rebased every five years to a new base year.
	3	In order to improve timeliness of the publication, some information for the current month may have been estimated due to late submission by respondents. These estimates will be revised in the next statistical release(s) as soon as actual information is available.
Purpose of the survey	4	The results of the monthly electricity generated and available for distribution survey are used to compile estimates of the gross domestic product (GDP) and its components, which are used in monitoring the state of the economy and formulation of economic policy.
Scope of the survey	5	This survey covers electricity undertakings and establishments conducting activities concerned with the generation or transmission and distribution of electricity. It includes electrical power installations, which, as subsidiary divisions of undertakings, produce electricity for regular use by these undertakings.
Classification	6	The 1993 edition of the <i>Standard Industrial Classification of all Economic Activities</i> (SIC), Fifth Edition, Report No. 09-90-02, was used to classify the statistical units in the survey. The SIC is based on the 1990 <i>International Standard Industrial Classification of all Economic Activities</i> (ISIC) with suitable adaptations for local conditions. Each statistical unit is classified to an industry, which reflects the predominant activity of the electricity undertaking or establishment.
Collection rate	7	The collection rate for the survey on electricity generated and available for distribution for October 2014 was 95,8%. The collection rate for September 2014 was 100%.
Statistical unit	8	The basic statistical unit for the collection of information is the electricity undertaking or establishment. The electricity undertaking or establishment is the smallest economic unit that functions as a separate entity. Each statistical unit is classified to an industry (see paragraph 5).
Survey methodology and design	9	All statistical units are stratified by type of economic activity according to the <i>Standard Industrial Classification of all Economic Activities</i> (SIC) and measure of size, where measure of size is the volume of electricity generated by the electricity undertaking or establishment. All large undertakings or establishments (size category one cases) are completely enumerated. A sample is drawn from medium and small size undertakings and establishments by systematically selecting undertakings or establishments within each size category. An electricity undertaking or establishment with a total generating capacity of less than 500 kilowatt is excluded from the sample.
	10	The survey is conducted by mail, email and telephone. Information is collected from a sample of 24 electricity undertakings or establishments.
Monthly production indices	11	The calculation of the monthly production indices is based on the volume of electricity units produced.

Benchmarking	12	The index of physical volume of electricity production should provide an accurate reflection of the trend of activities of the relevant industry. The level of activities, as measured by the monthly electricity generated and available for distribution survey, is based on information received from a sample of electricity undertakings and establishments. These levels are weighted according to the original sample and designed to represent the population of electricity undertakings and establishments. It is necessary to adjust the level of activities as measured by the monthly sample survey to the level of activities as measured periodically by the Census of electricity, gas and steam. This procedure, whereby the latest results of an economic census are used to compile more accurate level estimates for a certain year, is known as benchmarking.
	13	The results of the 1995 Census of electricity, gas and steam served as a benchmark to verify or adjust the level of the monthly physical volume of electricity production indices collected through the monthly sample survey. The level adjustments were done on the volume indices for August of the relevant census year (the 1995 census year covered the period 1 January 1995 to 31 December 1995 and therefore, the benchmarking was done using the index of August 1995 as reference point).
Seasonal adjustment	14	Seasonally adjusted estimates of all items are generated each month, using the X-12-ARIMA Seasonal Adjustment Program developed by US Bureau of the Census Economic Research and Analyses Division, 1968. Seasonal adjustment is a means of removing the estimated effects of normal seasonal variation from a time series so that the effects of other influences on the series can be more clearly recognised. Seasonal adjustment does not aim to remove irregular or non-seasonal influences, which may be present in any particular month. Influences that are volatile or unsystematic can still make it difficult to interpret the movement of the series even after adjustment for seasonal variations. This means the month-to-month movements of seasonally adjusted estimates may not be reliable indicators of trend behaviour. The X12-ARIMA procedure for electricity generated and available for distribution is described in more detail on the Stats SA website at Click to download Electricity seasonal adjustment August 2014.pdf
Trend cycle	15	The trend is the long-term pattern or movement of a time series. The X-12-ARIMA Seasonal Adjustment Program is used for smoothing seasonally adjusted estimates.
Related publications	16	Users may also wish to refer to the following publications which are available from Stats SA : <ul style="list-style-type: none"> • <i>Bulletin of Statistics;</i> • <i>South African Statistics;</i> and • <i>Stats in Brief.</i>
Rounding-off of figures	17	Where necessary, the figures in the tables have been rounded off to the nearest digit shown. There may therefore be slight discrepancies between the sums of the constituent items and the totals shown.

Glossary

Consumption of electricity	For purposes of this release the term 'consumption of electricity' is used interchangeably with the term 'electricity available for distribution'.
Electricity undertaking	An electricity undertaking is an undertaking concerned with the generation or transmission and distribution of electricity, including electrical power installations, which, as subsidiary divisions of undertakings, produce electricity for regular use by these undertakings.
Index of physical volume of electricity production	A statistical measure of the change in the volume of production of electricity in a given period and the volume of production of electricity in the base period. The base period is 2010. The production in the base period is set at 100.
Industry	An industry consists of a group of undertakings or establishments engaged in the same or similar kinds of economic activity. Industries are defined in the <i>System of National Accounts (SNA)</i> in the same way as in the 1993 <i>Standard Industrial Classification of all Economic Activities (SIC)</i> , Fifth Edition, Report No. 09-90-02 of January 1993.
Unit of electricity	One gigawatt-hour of electricity is equal to one million kilowatt-hours. A kilowatt-hour is the basic unit of electrical energy equal to one kilowatt of power supplied to or taken from an electric circuit steadily for one hour. One kilowatt-hour equals one thousand watt-hours.
Symbols and abbreviations	GDP Gross domestic product ISIC International Standard Industrial Classification SIC Standard Industrial Classification of all Economic Activities Stats SA Statistics South Africa * Revised figures
Technical enquiries	
Tsholofelo Ditinti	Telephone number: (012) 310 2229 Email: tsholofeloditinti@statssa.gov.za
Nicolai Claassen	Telephone number: (012) 310 8007 Email: nicolaic@statssa.gov.za

General information

Stats SA publishes approximately 300 different statistical releases each year. It is not economically viable to produce them in more than one of South Africa's eleven official languages. Since the releases are used extensively, not only locally but also by international economic and social-scientific communities, Stats SA releases are published in English only.

Stats SA has copyright on this publication. Users may apply the information as they wish, provided that they acknowledge Stats SA as the source of the basic data wherever they process, apply, utilise, publish or distribute the data: and also that they specify that the relevant application and analysis (where applicable) result from their own processing of the data.

Advanced release calendar

An advanced release calendar is disseminated on www.statssa.gov.za

Stats SA products

A complete set of Stats SA publications is available at the Stats SA Library and the following libraries:

National Library of South Africa, Pretoria Division
National Library of South Africa, Cape Town Division
Natal Society Library, Pietermaritzburg
Library of Parliament, Cape Town
Bloemfontein Public Library
Johannesburg Public Library
Eastern Cape Library Services, King William's Town
Central Regional Library, Polokwane
Central Reference Library, Mbombela
Central Reference Collection, Kimberley
Central Reference Library, Mmabatho

Stats SA also provides a subscription service.

Electronic services

A large range of data is available via online services. For more detail about our electronic services, contact Stats SA's user information service at (012) 310 8600.

You can visit us on the Internet at: www.statssa.gov.za

General enquiries

User information services Telephone number: (012) 310 8600
Email: info@statssa.gov.za

Orders/subscription services Telephone number: (012) 310 8358
Email: magdaj@statssa.gov.za

Postal address: Private Bag X44, Pretoria, 0001

Produced by Stats SA