



Statistics  
South Africa



your leading partner in quality statistics

# Statistical release

**P4141**

## Electricity generated and available for distribution (Preliminary)

**October 2012**

**Embargoed until:  
29 November 2012  
09:00**

**Enquiries:**

User Information Services  
Tel: (012) 310 8600 / 4892 /8390

**Forthcoming issue:**

November 2012

**Expected release date:**

7 January 2013

**Contents**

**Results for October 2012** ..... **2**

Table A – Selected key figures regarding electricity generated and available for distribution .....2

Table B – Comparison of the seasonally adjusted volume of electricity generated and available for distribution between the three months ended October 2012 and the previous three months.....3

Table C – Comparison of actual estimates between the three months ended October 2012 and the three months ended October 2011 .....3

Figure 1 – Electricity produced and available for distribution in South Africa, seasonally adjusted and trend .....3

**Tables** ..... **4**

Table 1 – Total volume of electricity available for distribution in South Africa: 2007–2012 .....4

Table 2 – Annual percentage change in electricity available for distribution in South Africa: 2007–2012.....4

Table 3 – Seasonally adjusted total volume of electricity available for distribution in South Africa: 2007–2012 .....4

Table 4 – Indices of the physical volume of electricity production: 2007–2012.....5

Table 5 – Annual percentage change in indices of the physical volume of electricity production: 2007–2012.....5

Table 6 – Seasonally adjusted indices of the physical volume of electricity production: 2007–2012.....5

Table 7 – Total volume of electricity imported: 2007–2012.....6

Table 8 – Total volume of electricity exported: 2007–2012.....6

Table 9a – Electricity produced and consumed in power stations, purchased and sold outside South Africa and available for distribution in South Africa (monthly figures).....7

Table 9b – Electricity produced and consumed in power stations, purchased and sold outside South Africa and available for distribution in South Africa (cumulative figures) .....7

Table 10 – Total volume of electricity delivered by Eskom to provinces for 2011 and 2012 .....8

**Explanatory notes**..... **9**

**Glossary** ..... **11**

**Technical enquiries**..... **11**

**General information** ..... **12**

## Results for October 2012

**Table A – Selected key figures regarding electricity generated and available for distribution**

Actual estimates	October 2012 1/	% change between October 2011 and October 2012	% change between August to October 2011 and August to October 2012	% change between January to October 2011 and January to October 2012
Electricity available for distribution (Gigawatt-hours)	19 413	-3,9	-2,6	-2,6
Index of the physical volume of electricity production (2010=100)	101,1	-1,9	-0,3	-1,8

1/ Preliminary.

Seasonally adjusted estimates	October 2012	% change between September and October 2012	% change between May to July 2012 and August to October 2012
Electricity available for distribution (Gigawatt-hours)	19 096	-1,1	-0,1
Index of the physical volume of electricity production (2010=100)	98,9	-0,7	1,8

### Consumption of electricity

The actual volume of electricity consumption decreased by 3,9% year-on-year in October 2012. Seasonally adjusted electricity consumption decreased by 1,1% in October 2012 compared with September 2012. This follows month-on-month changes of -1,5% in September 2012 and 1,2% in August 2012. Seasonally adjusted electricity consumption decreased by 0,1% in the three months ended October 2012 compared with the previous three months.

### Production of electricity

The actual estimated electricity production decreased by 1,9% in October 2012 compared with October 2011. Seasonally adjusted electricity production decreased by 0,7% month-on-month in October 2012, following month-on-month changes of -1,8% in September 2012 and 2,8% in August 2012. Seasonally adjusted electricity production increased by 1,8% in the three months ended October 2012 compared with the previous three months.

### Electricity delivered by Eskom to the provinces

The total volume of electricity delivered by Eskom to the provinces decreased by 3,1% in October 2012 compared with October 2011. Decreases were reported in eight of the nine provinces, with the largest volume decrease recorded for North West (-183 Gigawatt-hours), followed by Gauteng (-135 Gigawatt-hours). Western Cape recorded a year-on-year increase of 84 Gigawatt-hours over this period.

**Table B – Comparison of the seasonally adjusted volume of electricity generated and available for distribution between the three months ended October 2012 and the previous three months**

Gigawatt-hours	Seasonally adjusted quantity May to July 2012	Seasonally adjusted quantity August to October 2012	% change between May to July 2012 and August to October 2012	Quantity difference between May to July 2012 and August to October 2012
Electricity produced	63 745	64 913	1,8	1 168
Electricity available for distribution in South Africa	58 083	58 013	-0,1	-70

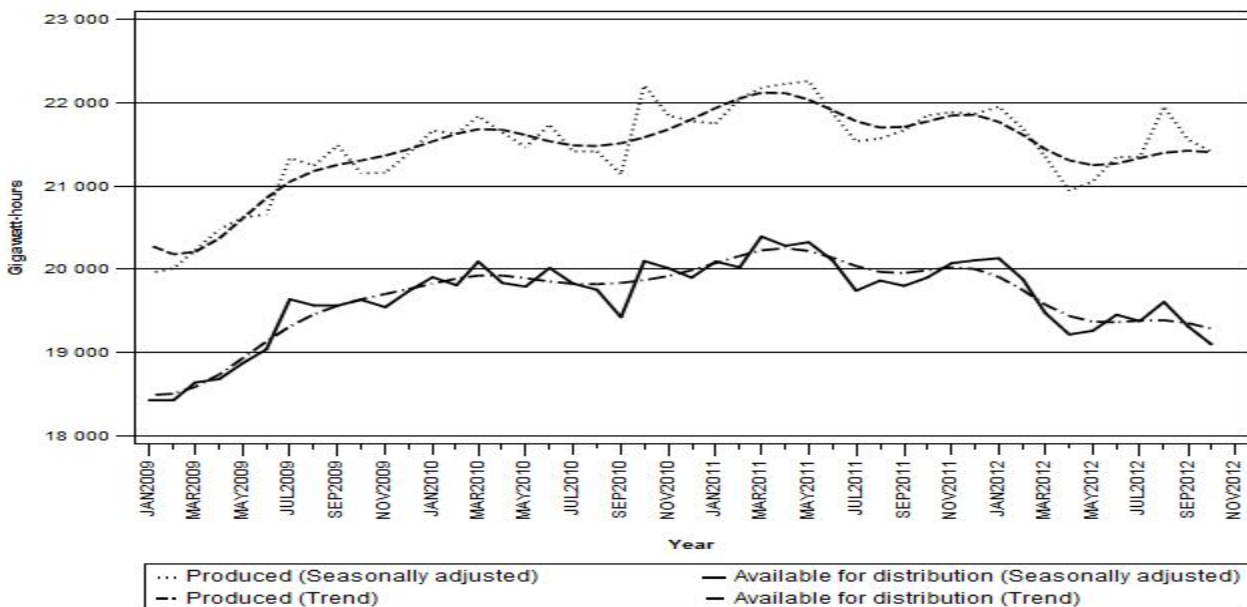
**Table C – Comparison of actual estimates between the three months ended October 2012 and the three months ended October 2011**

Gigawatt-hours	Actual volume August to October 2011	Actual volume August to October 2012	% change between August to October 2011 and August to October 2012	Quantity difference between August to October 2011 and August to October 2012
Electricity produced	66 230	66 030	-0,3	-200
Purchased outside South Africa (import) 1/	2 993	1 390	-53,6	-1 603
Consumed in power stations and auxiliary systems	4 826	4 803	-0,5	-23
Sold outside South Africa (export) 2/	3 964	3 760	-5,1	-204
Electricity available for distribution in South Africa	60 434	58 858	-2,6	-1 576

1/ Physical energy flowing into South Africa as measured by the metering systems at the South African borders.

2/ Physical energy flowing out of South Africa as measured by the metering systems at the South African borders.

**Figure 1 – Electricity produced and available for distribution in South Africa, seasonally adjusted and trend**



**PJ Lehohla**  
**Statistician-General**

**Tables**

**Table 1 – Total volume of electricity available for distribution in South Africa: 2007–2012**

Month	Gigawatt-hours					
	2007	2008	2009	2010	2011	2012
January	19 561	19 256	17 919	19 396	19 616	19 676
February	18 301	18 668	16 757	18 181	18 455	18 783
March	20 160	19 603	18 694	20 186	20 518	19 623
April	18 982	19 127	17 934	19 102	19 539	18 466
May	20 901	20 365	19 548	20 435	20 938	19 869
June	21 020	20 515	19 819	20 800	20 914	20 274
July	21 780	21 610	21 151	21 307	21 162	20 743
August	21 353	20 736	20 398	20 540	20 617	20 345
September	19 732	19 725	19 382	19 256	19 619	19 100
October	20 435	20 138	19 899	20 371	20 198	1/ 19 413
November	19 785	18 640	19 248	19 702	19 763	
December	19 160	17 541	18 850	18 996	19 189	
<b>Year</b>	<b>241 170</b>	<b>235 924</b>	<b>229 599</b>	<b>238 272</b>	<b>240 528</b>	

1/ Preliminary.

**Table 2 – Annual percentage change in electricity available for distribution in South Africa: 2007–2012**

Month	Percentage change 2/					
	2007	2008	2009	2010	2011	2012
January	5,1	-1,6	-6,9	8,2	1,1	0,3
February	5,2	2,0	-10,2	8,5	1,5	1,8
March	6,2	-2,8	-4,6	8,0	1,6	-4,4
April	4,7	0,8	-6,2	6,5	2,3	-5,5
May	2,9	-2,6	-4,0	4,5	2,5	-5,1
June	4,2	-2,4	-3,4	4,9	0,5	-3,1
July	5,6	-0,8	-2,1	0,7	-0,7	-2,0
August	5,2	-2,9	-1,6	0,7	0,4	-1,3
September	3,9	0,0	-1,7	-0,7	1,9	-2,6
October	3,9	-1,5	-1,2	2,4	-0,8	-3,9
November	2,8	-5,8	3,3	2,4	0,3	
December	1,3	-8,4	7,5	0,8	1,0	
<b>Year</b>	<b>4,3</b>	<b>-2,2</b>	<b>-2,7</b>	<b>3,8</b>	<b>0,9</b>	

2/ The annual percentage change is the change in the volume of electricity available for distribution of the relevant month of the current year compared with the corresponding month of the previous year expressed as a percentage.

**Table 3 – Seasonally adjusted total volume of electricity available for distribution in South Africa: 2007–2012**

Month	Gigawatt-hours						% change between current and previous month
	2007	2008	2009	2010	2011	2012	
January	20 051	19 767	18 424	19 902	20 091	20 130	0,1
February	19 944	19 921	18 424	19 806	20 020	19 878	-1,3
March	20 154	19 572	18 637	20 090	20 390	19 472	-2,0
April	19 777	19 892	18 679	19 833	20 279	19 214	-1,3
May	20 149	19 632	18 867	19 789	20 322	19 258	0,2
June	20 269	19 761	19 037	20 013	20 102	19 451	1,0
July	20 301	20 096	19 637	19 826	19 739	19 374	-0,4
August	20 471	19 865	19 563	19 751	19 862	19 605	1,2
September	19 944	19 928	19 562	19 421	19 798	19 312	-1,5
October	20 143	19 869	19 631	20 097	19 898	19 096	-1,1
November	20 077	18 937	19 542	20 009	20 070		
December	19 992	18 392	19 733	19 896	20 104		

**Table 4 – Indices of the physical volume of electricity production: 2007–2012**

Month	Base: 2010=100					
	2007	2008	2009	2010	2011	2012
January	98,1	99,3	89,7	97,6	98,1	99,2
February	91,7	94,1	83,5	91,1	93,3	93,8
March	101,7	99,6	93,7	101,3	103,0	99,3
April	95,2	96,2	90,7	96,2	98,9	92,9
May	105,6	103,4	98,6	102,3	105,9	100,3
June	106,1	102,6	98,8	103,8	104,6	102,2
July	110,0	108,6	106,4	106,6	106,8	105,7
August	107,6	104,0	102,7	103,2	103,7	105,4
September	99,5	98,8	98,5	97,0	99,4	98,7
October	103,0	103,2	99,6	104,6	103,1	1/ 101,1
November	100,8	95,7	96,8	100,0	100,1	
December	98,7	88,3	94,6	96,3	96,7	
<b>Year</b>	<b>101,5</b>	<b>99,5</b>	<b>96,1</b>	<b>100,0</b>	<b>101,1</b>	

1/ Preliminary.

**Table 5 – Annual percentage change in indices of the physical volume of electricity production: 2007–2012**

Month	Percentage change 2/					
	2007	2008	2009	2010	2011	2012
January	4,3	1,2	-9,7	8,8	0,5	1,1
February	3,4	2,6	-11,3	9,1	2,4	0,5
March	4,4	-2,1	-5,9	8,1	1,7	-3,6
April	3,0	1,1	-5,7	6,1	2,8	-6,1
May	3,5	-2,1	-4,6	3,8	3,5	-5,3
June	4,8	-3,3	-3,7	5,1	0,8	-2,3
July	5,2	-1,3	-2,0	0,2	0,2	-1,0
August	4,5	-3,3	-1,3	0,5	0,5	1,6
September	3,6	-0,7	-0,3	-1,5	2,5	-0,7
October	1,9	0,2	-3,5	5,0	-1,4	-1,9
November	3,5	-5,1	1,1	3,3	0,1	
December	3,7	-10,5	7,1	1,8	0,4	
<b>Year</b>	<b>3,8</b>	<b>-2,0</b>	<b>-3,4</b>	<b>4,0</b>	<b>1,1</b>	

2/ The annual percentage change is the change in the index of the physical volume of electricity production of the relevant month of the current year compared with the corresponding month of the previous year expressed as a percentage.

**Table 6 – Seasonally adjusted indices of the physical volume of electricity production: 2007–2012**

Month	Base: 2010=100						% change between current and previous month
	2007	2008	2009	2010	2011	2012	
January	100,5	101,9	92,2	100,1	100,5	101,4	0,4
February	100,5	101,1	92,4	99,9	101,8	100,2	-1,2
March	101,6	99,4	93,4	100,9	102,5	98,6	-1,6
April	99,4	100,2	94,6	100,0	102,7	96,7	-1,9
May	102,0	99,8	95,2	99,1	102,8	97,3	0,6
June	102,7	99,3	95,4	100,4	101,0	98,6	1,3
July	102,2	100,7	98,6	98,9	99,5	98,6	0,0
August	102,8	99,3	98,1	98,9	99,6	101,4	2,8
September	100,4	99,7	99,3	97,7	100,1	99,6	-1,8
October	101,0	101,3	97,7	102,6	100,9	98,9	-0,7
November	102,0	96,8	97,7	100,9	101,1		
December	102,6	92,3	98,8	100,6	101,0		

**Table 7 – Total volume of electricity imported: 2007–2012 1/**

Month	Gigawatt-hours					
	2007	2008	2009	2010	2011	2012
January	1 088	638	1 102	1 122	1 088	1 085
February	942	885	999	995	730	1 063
March	973	802	1 064	1 040	1 112	945
April	1 055	844	906	931	912	1 068
May	900	761	937	1 074	907	1 066
June	880	1 002	1 088	1 019	1 009	1 044
July	984	1 089	1 040	1 117	979	903
August	1 045	1 076	1 072	1 109	1 108	465
September	1 026	1 044	920	1 068	974	474
October	1 040	645	1 115	770	911	2/ 451
November	796	711	940	1 018	1 073	
December	619	1 075	1 112	930	1 087	
<b>Year</b>	<b>11 348</b>	<b>10 572</b>	<b>12 295</b>	<b>12 193</b>	<b>11 890</b>	

1/ Physical energy flowing into South Africa as measured by the metering systems at the South African borders.

2/ Preliminary.

**Table 8 – Total volume of electricity exported: 2007–2012 1/**

Month	Gigawatt-hours					
	2007	2008	2009	2010	2011	2012
January	1 134	1 280	1 096	1 217	1 133	1 247
February	1 060	1 101	979	1 128	1 069	1 212
March	1 231	1 136	1 100	1 252	1 279	1 242
April	1 132	998	1 086	1 170	1 190	1 174
May	1 203	1 120	1 109	1 177	1 241	1 322
June	1 256	1 162	1 175	1 132	1 174	1 335
July	1 301	1 249	1 223	1 206	1 247	1 350
August	1 252	1 220	1 235	1 275	1 298	1 295
September	1 186	1 203	1 285	1 248	1 288	1 165
October	1 252	1 258	1 288	1 338	1 378	2/ 1 300
November	1 256	1 252	1 213	1 316	1 381	
December	1 233	1 189	1 263	1 209	1 286	
<b>Year</b>	<b>14 496</b>	<b>14 168</b>	<b>14 052</b>	<b>14 668</b>	<b>14 964</b>	

1/ Physical energy flowing out of South Africa as measured by the metering systems at the South African borders.

2/ Preliminary.

**Table 9a – Electricity produced and consumed in power stations, purchased and sold outside South Africa and available for distribution in South Africa (monthly figures)**

		Gigawatt-hours				
		October 2011	September 2012	October 2012 1/	% change between October 2011 and October 2012	Difference between October 2011 and October 2012
<b>Total - All producers</b>	Electricity produced	22 294	21 351	21 877	-1,9	-417
	Purchased outside South Africa (import) 2/	911	474	451	-50,5	-460
	Consumed in power stations and auxiliary systems	1 630	1 560	1 615	-0,9	-15
	Sold outside South Africa (export) 3/	1 378	1 165	1 300	-5,7	-78
	Electricity available for distribution in South Africa	<b>20 198</b>	<b>19 100</b>	<b>19 413</b>	<b>-3,9</b>	<b>-785</b>
<b>ESKOM</b>	Electricity produced	21 390	20 534	21 003	-1,8	-387
	Purchased outside South Africa (import) 2/	911	474	451	-50,5	-460
	Consumed in power stations and auxiliary systems	1 569	1 495	1 547	-1,4	-22
	Sold outside South Africa (export) 3/	1 378	1 165	1 300	-5,7	-78
	Electricity available for distribution in South Africa	<b>19 355</b>	<b>18 348</b>	<b>18 607</b>	<b>-3,9</b>	<b>-748</b>

1/ Preliminary.

2/ Physical energy flowing into South Africa as measured by the metering systems at the South African borders.

3/ Physical energy flowing out of South Africa as measured by the metering systems at the South African borders.

**Table 9b – Electricity produced and consumed in power stations, purchased and sold outside South Africa and available for distribution in South Africa (cumulative figures)**

		Gigawatt-hours			
		January to October 2011	January to October 2012 1/	% change between January to October 2011 and January to October 2012	Difference between January to October 2011 and January to October 2012
<b>Total - All producers</b>	Electricity produced	219 964	216 038	-1,8	-3 926
	Purchased outside South Africa (import) 2/	9 730	8 564	-12,0	-1 166
	Consumed in power stations and auxiliary systems	15 822	15 667	-1,0	-155
	Sold outside South Africa (export) 3/	12 297	12 642	2,8	345
	Electricity available for distribution in South Africa	<b>201 576</b>	<b>196 292</b>	<b>-2,6</b>	<b>-5 284</b>
<b>ESKOM</b>	Electricity produced	210 988	207 306	-1,7	-3 682
	Purchased outside South Africa (import) 2/	9 730	8 564	-12,0	-1 166
	Consumed in power stations and auxiliary systems	15 157	14 942	-1,4	-215
	Sold outside South Africa (export) 3/	12 297	12 642	2,8	345
	Electricity available for distribution in South Africa	<b>193 267</b>	<b>188 288</b>	<b>-2,6</b>	<b>-4 979</b>

1/ Preliminary.

2/ Physical energy flowing into South Africa as measured by the metering systems at the South African borders.

3/ Physical energy flowing out of South Africa as measured by the metering systems at the South African borders.



**Table 10 – Total volume of electricity delivered by Eskom to provinces for 2011 and 2012 1/**

Period		Gigawatt-hours									Total South Africa
		Western Cape	Eastern Cape	Northern Cape	Free State	KwaZulu-Natal	North West	Gauteng	Mpumalanga	Limpopo	
<b>2011</b>	January	1 962	777	408	721	3 417	2 187	4 738	3 052	1 021	<b>18 283</b>
	February	1 881	734	372	665	3 256	2 044	4 394	2 808	937	<b>17 091</b>
	March	2 031	773	417	774	3 631	2 292	4 955	3 017	1 063	<b>18 953</b>
	April	1 877	726	389	753	3 432	2 159	5 016	2 946	992	<b>18 290</b>
	May	1 980	811	406	772	3 624	2 283	5 435	3 106	1 000	<b>19 417</b>
	June	1 966	826	417	812	3 527	2 097	5 804	2 945	1 020	<b>19 414</b>
	July	2 014	876	428	814	3 639	2 086	5 971	2 852	972	<b>19 652</b>
	August	1 985	884	414	783	3 574	2 029	5 727	2 830	960	<b>19 186</b>
	September	1 752	840	418	688	3 381	2 172	4 985	2 788	1 028	<b>18 052</b>
	October	1 801	840	447	709	3 547	2 268	4 991	2 997	1 051	<b>18 651</b>
	November	1 767	840	428	666	3 429	2 248	4 814	2 916	1 035	<b>18 143</b>
	December	1 763	783	441	647	3 466	2 107	4 426	2 895	1 050	<b>17 578</b>
	<b>Year</b>	<b>22 779</b>	<b>9 710</b>	<b>4 985</b>	<b>8 804</b>	<b>41 923</b>	<b>25 972</b>	<b>61 256</b>	<b>35 152</b>	<b>12 129</b>	<b>222 710</b>
	<b>Year to date</b>	<b>19 249</b>	<b>8 087</b>	<b>4 116</b>	<b>7 491</b>	<b>35 028</b>	<b>21 617</b>	<b>52 016</b>	<b>29 341</b>	<b>10 044</b>	<b>186 989</b>
<b>2012</b>	January	1 889	844	464	706	3 527	2 237	4 631	2 910	1 038	<b>18 246</b>
	February	1 922	816	403	668	3 271	2 034	4 509	2 779	988	<b>17 390</b>
	March	2 027	859	436	688	3 282	2 161	4 849	2 900	1 000	<b>18 202</b>
	April	1 846	763	391	655	3 154	1 993	4 624	2 800	937	<b>17 163</b>
	May	1 943	839	401	709	3 318	2 181	5 159	2 884	991	<b>18 425</b>
	June	1 933	802	406	775	3 315	2 205	5 643	2 816	974	<b>18 869</b>
	July	1 978	837	432	793	3 441	2 273	5 731	2 922	952	<b>19 359</b>
	August	1 993	838	420	776	3 436	2 186	5 540	2 767	937	<b>18 893</b>
	September	1 852	788	414	664	3 316	2 097	4 981	2 678	950	<b>17 740</b>
	October 2/	1 885	795	418	703	3 458	2 085	4 856	2 884	988	<b>18 072</b>
	<b>Year to date</b>	<b>19 268</b>	<b>8 181</b>	<b>4 185</b>	<b>7 137</b>	<b>33 518</b>	<b>21 452</b>	<b>50 523</b>	<b>28 340</b>	<b>9 755</b>	<b>182 359</b>

1/ Wholesale energy (Gigawatt-hours) as delivered by Eskom to the various provinces.

2/ Preliminary.

## Explanatory notes

<b>Introduction</b>	<b>1</b>	Statistics South Africa (Stats SA) conducts a monthly sample survey of the electricity industry covering electricity undertakings and establishments (branches). This statistical release contains information regarding the volume of electricity units generated and available for distribution in South Africa, the volume of units purchased and sold outside South Africa and the volume of units distributed by Eskom by province on a monthly basis. Both actual and seasonally adjusted figures are published.
	<b>2</b>	This statistical release reflects indices of the physical volume of electricity production on the basis of 2010=100. In accordance with international practice, the indices have to be rebased every five years to a new base year.
	<b>3</b>	In order to improve timeliness of the publication, some information for the current month may have been estimated due to late submission by respondents. These estimates will be revised in the next statistical release(s) as soon as actual information is available.
<b>Purpose of the survey</b>	<b>4</b>	The results of the monthly electricity generated and available for distribution survey are used to compile estimates of the gross domestic product (GDP) and its components, which are used in monitoring the state of the economy and formulation of economic policy.
<b>Scope of the survey</b>	<b>5</b>	This survey covers electricity undertakings and establishments conducting activities concerned with the generation or transmission and distribution of electricity. It includes electrical power installations, which, as subsidiary divisions of undertakings, produce electricity for regular use by these undertakings.
<b>Classification</b>	<b>6</b>	The 1993 edition of the <i>Standard Industrial Classification of all Economic Activities (SIC)</i> , Fifth Edition, Report No. 09-90-02, was used to classify the statistical units in the survey. The SIC is based on the 1990 <i>International Standard Industrial Classification of all Economic Activities (ISIC)</i> with suitable adaptations for local conditions. Each statistical unit is classified to an industry, which reflects the predominant activity of the electricity undertaking or establishment.
<b>Collection rate</b>	<b>7</b>	The collection rate for the survey on electricity generated and available for distribution for October 2012 was 99%. The improved collection rate for September 2012 was 100%.
<b>Statistical unit</b>	<b>8</b>	The basic statistical unit for the collection of information is the electricity undertaking or establishment. The electricity undertaking or establishment is the smallest economic unit that functions as a separate entity. Each statistical unit is classified to an industry (see paragraph 5).
<b>Survey methodology and design</b>	<b>9</b>	All statistical units are stratified by type of economic activity according to the <i>Standard Industrial Classification of all Economic Activities (SIC)</i> and measure of size, where measure of size is the volume of electricity generated by the electricity undertaking or establishment. All large undertakings or establishments (size category one cases) are completely enumerated. A sample is drawn from medium and small size undertakings and establishments by systematically selecting undertakings or establishments within each size category. An electricity undertaking or establishment with a total generating capacity of less than 500 kilowatt is excluded from the sample.
	<b>10</b>	The survey is conducted by mail, email and telephone. Information is collected from a sample of 25 electricity undertakings or establishments.
<b>Monthly production indices</b>	<b>11</b>	The calculation of the monthly production indices is based on the volume of electricity units produced.

<b>Benchmarking</b>	<b>12</b>	The index of physical volume of electricity production should provide an accurate reflection of the trend of activities of the relevant industry. The level of activities, as measured by the monthly electricity generated and available for distribution survey, is based on information received from a sample of electricity undertakings and establishments. These levels are weighted according to the original sample and designed to represent the population of electricity undertakings and establishments. It is necessary to adjust the level of activities as measured by the monthly sample survey to the level of activities as measured periodically by the Census of electricity, gas and steam. This procedure, whereby the latest results of an economic census are used to compile more accurate level estimates for a certain year, is known as benchmarking.
	<b>13</b>	The results of the 1995 Census of electricity, gas and steam served as a benchmark to verify or adjust the level of the monthly physical volume of electricity production indices collected through the monthly sample survey. The level adjustments were done on the volume indices for August of the relevant census year (the 1995 census year covered the period 1 January 1995 to 31 December 1995 and therefore, the benchmarking was done using the index of August 1995 as reference point).
<b>Seasonal adjustment</b>	<b>14</b>	Seasonally adjusted estimates of all items are generated each month, using the X-12-ARIMA Seasonal Adjustment Program developed by US Bureau of the Census Economic Research and Analyses Division, 1968. Seasonal adjustment is a means of removing the estimated effects of normal seasonal variation from the series so that the effects of other influences on the series can be more clearly recognized. Seasonal adjustment does not aim to remove irregular or non-seasonal influences, which may be present in any particular month. Influences that are volatile or unsystematic can still make it difficult to interpret the movement of the series even after adjustment for seasonal variations. This means the month-to-month movements of seasonally adjusted estimates may not be reliable indicators of trend behaviour. The X12-ARIMA procedure for electricity generated and available for distribution is described in more detail on the Stats SA website at <a href="http://www.statssa.gov.za/publications/P4141/electricity_seasonal_adjustment_note_2012.pdf">http://www.statssa.gov.za/publications/P4141/electricity_seasonal_adjustment_note_2012.pdf</a>
<b>Trend cycle</b>	<b>15</b>	The trend is the long-term pattern or movement of a time series. The X-12-ARIMA Seasonal Adjustment Program is used for smoothing seasonally adjusted estimates.
<b>Related publications</b>	<b>16</b>	Users may also wish to refer to the following publications which are available from Stats SA : <ul style="list-style-type: none"> <li>• <i>Bulletin of Statistics</i>; and</li> <li>• <i>SA Statistics</i>.</li> </ul>
<b>Rounding-off of figures</b>	<b>17</b>	Where necessary, the figures in the tables have been rounded off to the nearest digit shown. There may therefore be slight discrepancies between the sums of the constituent items and the totals shown.

## Glossary

**Consumption of electricity** For purposes of this release the term 'consumption of electricity' is used interchangeably with the term 'electricity available for distribution'.

**Electricity undertaking** An electricity undertaking is an undertaking concerned with the generation or transmission and distribution of electricity, including electrical power installations, which, as subsidiary divisions of undertakings, produce electricity for regular use by these undertakings.

**Index of physical volume of electricity production** A statistical measure of the change in the volume of production of electricity in a given period and the volume of production of electricity in the base period. The base period is 2010. The production in the base period is set at 100.

**Industry** An industry consists of a group of undertakings or establishments engaged in the same or similar kinds of economic activity. Industries are defined in the 1993 *System of National Accounts (1993 SNA)* in the same way as in the *Standard Industrial Classification of all Economic Activities (SIC)*, Fifth Edition, Report No. 09-90-02.

**Unit of electricity** One gigawatt-hour of electricity is equal to one million kilowatt-hours. A kilowatt-hour is the basic unit of electrical energy equal to one kilowatt of power supplied to or taken from an electric circuit steadily for one hour. One kilowatt-hour equals one thousand watt-hours.

**Symbols and abbreviations**

GDP	Gross domestic product
ISIC	International Standard Industrial Classification
SIC	Standard Industrial Classification of all Economic Activities
Stats SA	Statistics South Africa
*	Revised figures

## Technical enquiries

**Onica Mapimele** Telephone number: (012) 310 4897  
Email: onicama@statssa.gov.za

**Nicolai Claassen** Telephone number: (012) 336 0142  
Email: nicolaic@statssa.gov.za

## General information

Stats SA publishes approximately 300 different statistical releases each year. It is not economically viable to produce them in more than one of South Africa's eleven official languages. Since the releases are used extensively, not only locally but also by international economic and social-scientific communities, Stats SA releases are published in English only.

Stats SA has copyright on this publication. Users may apply the information as they wish, provided that they acknowledge Stats SA as the source of the basic data wherever they process, apply, utilise, publish or distribute the data: and also that they specify that the relevant application and analysis (where applicable) result from their own processing of the data.

### Advanced release calendar

An advanced release calendar is disseminated on [www.statssa.gov.za](http://www.statssa.gov.za)

### Stats SA products

A complete set of Stats SA publications is available at the Stats SA Library and the following libraries:

National Library of South Africa, Pretoria Division  
National Library of South Africa, Cape Town Division  
Natal Society Library, Pietermaritzburg  
Library of Parliament, Cape Town  
Bloemfontein Public Library  
Johannesburg Public Library  
Eastern Cape Library Services, King William's Town  
Central Regional Library, Polokwane  
Central Reference Library, Nelspruit  
Central Reference Collection, Kimberley  
Central Reference Library, Mmabatho

Stats SA also provides a subscription service.

### Electronic services

A large range of data is available via online services. For more detail about our electronic services, contact Stats SA's user information service at (012) 310 8600.

You can visit us on the Internet at: [www.statssa.gov.za](http://www.statssa.gov.za)

### General enquiries

**User information services** Telephone number: (012) 310 8600  
Email: [info@statssa.gov.za](mailto:info@statssa.gov.za)

**Orders/subscription services** Telephone number: (012) 310 8358  
Email: [magdaj@statssa.gov.za](mailto:magdaj@statssa.gov.za)

**Postal address:** Private Bag X44, Pretoria, 0001

*Produced by Stats SA*