

Statistical release

P4141

Electricity generated and available for distribution (preliminary)

October 2008

Embargoed until:
4 December 2008
13:00

Enquiries:

User information services
Tel: (012) 310 8600/ 8390/ 8351

Forthcoming issue:

November 2008

Expected release date

6 January 2009

Contents

Page

SUMMARY OF FINDINGS: ELECTRICITY GENERATED AND AVAILABLE FOR DISTRIBUTION (OCTOBER 2008)**2**

Key findings**2**

Consumption of electricity decreases2

Production of electricity slightly increases2

Distribution of electricity by Eskom to the provinces decreases2

International trade in electricity decreases2

Table A – Selected key figures regarding electricity generated and available for distribution for October 20083

Table B – Comparison of the seasonally adjusted quantity of electricity generated and available for distribution between the current quarter and the previous quarter3

Table C – Comparison of actual estimates between the current quarter and the corresponding quarter of the previous year3

Figure 1 – Electricity produced and available for distribution in South Africa from 2005 to 20084

Table 1 – Total volume of electricity available for distribution in South Africa: 2003 to 20085

Table 2 – Annual percentage change in electricity available for distribution in South Africa: 2003 to 20085

Table 3 – Seasonally adjusted total volume of electricity available for distribution in South Africa: 2003 to 20086

Table 4 – Indices of the physical volume of electricity production: 2003 to 20087

Table 5 – Annual percentage change in indices of the physical volume of electricity production: 2003 to 20087

Table 6 – Seasonally adjusted indices of the physical volume of electricity production: 2003 to 20088

Table 7 – Total volume of electricity imported: 2003 to 20089

Table 8 – Total volume of electricity exported: 2003 to 20089

Table 9a – Electricity produced and consumed in power stations, purchased and sold outside South Africa and available for distribution in South Africa (monthly figures) 10

Table 9b – Electricity produced and consumed in power stations, purchased and sold outside South Africa and available for distribution in South Africa (cumulative figures) 10

Table 10 – Electricity distributed by Eskom to provinces for 2007 and 2008 11

Explanatory Notes**12**

Glossary**14**

General information**15**

SUMMARY OF FINDINGS: ELECTRICITY GENERATED AND AVAILABLE FOR DISTRIBUTION (OCTOBER 2008)

Key findings

Consumption of electricity decreases

The estimated consumption of electricity in October 2008 decreased by 1,4% (-292 Gigawatt-hours) compared with October 2007, while an increase of 3,9% was recorded for October 2007 compared with October 2006 (see tables A, 2 and 9a). Electricity consumed for the three months ending October 2008 also decreased by 1,4% (-876 Gigawatt-hours) compared with the same three months of 2007 (see tables A and C). However, electricity consumption after seasonal adjustment for the latest three months ending October 2008 increased by 0,5% compared with the previous three months ending July 2008 (see table A).

Production of electricity slightly increases

The estimated production of electricity in October 2008 slightly increased by 0,3% (58 Gigawatt-hours) compared with October 2007 (see tables A and 9a). The estimated production of electricity, after seasonal adjustment, remained stable for October 2008 compared with September 2008 but increased by 0,6% for the latest three months ending October 2008 compared with previous three months ending July 2008 (see table A). However, the estimated production of electricity during the last three months ending October 2008 decreased by 1,3% (-846 Gigawatt-hours) compared with the same period of 2007 (see tables A and C).

Distribution of electricity by Eskom to the provinces decreases

Electricity distributed to the provinces decreased by 1,6% (-3 038 Gigawatt-hours) for the first ten months of 2008 compared with the first ten months of 2007. In spite of the general decreasing trend, increases were reported for Limpopo (3,5% or 327 Gigawatt-hours) and Mpumalanga (1,6% or 461 Gigawatt-hours). Decreases were reported for Western Cape (-0,2% or -48 Gigawatt-hours), Gauteng (-1,5% or -758 Gigawatt-hours), North West (-2,9% or -647 Gigawatt-hours), Eastern Cape (-3,6% or -297 Gigawatt-hours), Free State (-4,0% or -320 Gigawatt-hours), KwaZulu-Natal (-4,3% or -1 537 Gigawatt-hours,) and Northern Cape (-5,2% or -219 Gigawatt-hours) (see table 10). In the first ten months of 2008, consumption of electricity was affected by numerous factors that led to reduced levels of consumption, such as load shedding and a continuous drive from Eskom in encouraging users to save on electricity consumption.

International trade in electricity decreases

International trade in electricity for the first ten months of 2008 showed annual decreases for electricity imported from outside South Africa (-11,6% or -1 151 Gigawatt-hours) and electricity exported to neighbouring countries (-2,4% or -291 Gigawatt-hours) (see table 9b). Electricity purchased outside South Africa (imports) in October 2008 was considerably below normal due to necessary maintenance at Songo converter station in Mozambique. Eskom expects a normal level of imports in November 2008. According to Eskom, there is still a requirement for all electricity sold outside South Africa (exports) to be reduced in line with the reduction required by all customers.

Key figures

Table A – Selected key figures regarding electricity generated and available for distribution for October 2008

Estimates	October 2008 1/	% change between October 2007 and October 2008	% change between August to October 2007 and August to October 2008	% change between January to October 2007 and January to October 2008
Electricity available for distribution (Gigawatt-hours)	20 143	-1,4	-1,4	-1,1
Index of the physical volume of electricity production (2005=100)	109,4	0,3	-1,3	-0,8

1/ Preliminary.

Seasonally adjusted estimates	October 2008 1/	% change between September and October 2008	% change between May to July 2008 and August to October 2008
Electricity available for distribution (Gigawatt-hours)	19 894	-0,9	0,5
Index of the physical volume of electricity production (2005=100)	107,0	0,0	0,6

Table B – Comparison of the seasonally adjusted quantity of electricity generated and available for distribution between the current quarter and the previous quarter

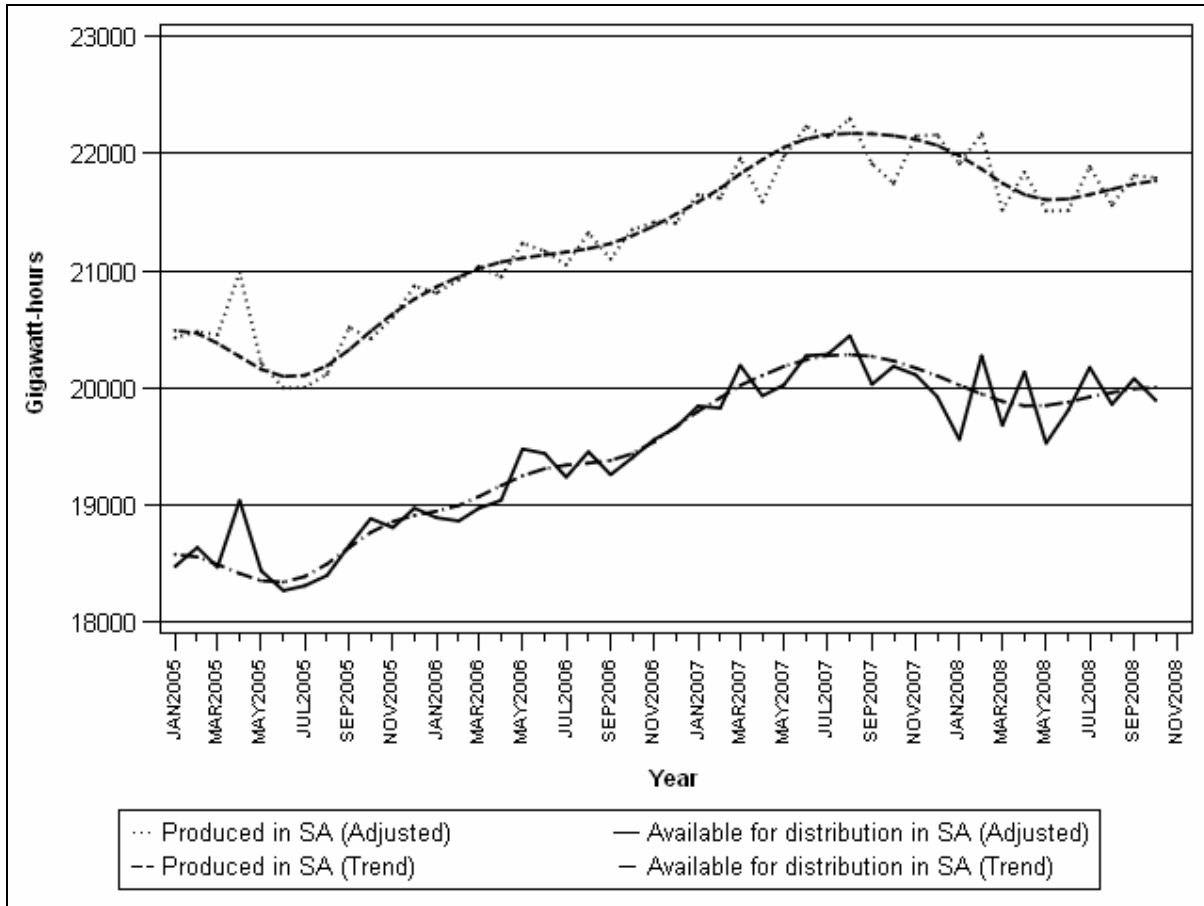
Gigawatt-hours	Seasonally adjusted quantity May to July 2008	Seasonally adjusted quantity August to October 2008	% change between May to July 2008 and August to October 2008	Quantity difference between May to July 2008 and August to October 2008
Electricity produced	64 908	65 162	0,4	254
Electricity available for distribution in South Africa	59 510	59 830	0,5	320

Table C – Comparison of actual estimates between the current quarter and the corresponding quarter the previous year

Gigawatt-hours	Actual quantity August to October 2007	Actual quantity August to October 2008	% change between August to October 2007 and August to October 2008	Quantity difference between August to October 2007 and August to October 2008
Electricity produced	67 076	66 230	-1,3	-846
Purchased outside South Africa (import)	3 111	2 760	-11,3	-351
Consumed in power stations and auxiliary systems	4 978	4 668	-6,2	-310
Sold outside South Africa (export)	3 690	3 676	-0,4	-14
Electricity available for distribution in South Africa	61 520	60 644	-1,4	-876

Figure 1 below shows the seasonally adjusted and trend patterns for electricity produced and available for distribution in South Africa between January 2005 and October 2008.

Figure 1 – Electricity produced and available for distribution in South Africa from 2005 to 2008



P J Lehohla
Statistician-General

Detailed results: Tables

Table 1 – Total volume of electricity available for distribution in South Africa: 2003 to 2008

	2003	2004	2005	2006	2007	2008
January	17 095	17 850	18 149	18 603	19 561	19 285
February	16 168	17 277	17 169	17 396	18 301	18 695
March	17 655	18 476	18 487	18 982	20 160	19 625
April	16 905	17 524	18 133	18 122	18 982	19 151
May	18 159	18 909	19 224	20 312	20 901	20 383
June	18 330	19 337	18 983	20 166	21 020	20 531
July	19 183	20 156	19 657	20 632	21 780	21 642
August	18 714	19 265	19 191	20 307	21 353	20 746
September	17 526	18 362	18 384	18 987	19 732	19 755
October	18 480	18 714	19 127	19 663	20 435	1/ 20 143
November	17 790	18 314	18 523	19 244	19 785	
December	17 456	17 754	18 230	18 909	19 160	
Year	213 461	221 938	223 257	231 323	241 170	

1/ Preliminary.

Table 2 – Annual percentage change in electricity available for distribution in South Africa: 2003 to 2008

	Percentage change					
	2003	2004	2005	2006	2007	2008
January	5,6	4,4	1,7	2,5	5,1	-1,4
February	6,3	6,9	-0,6	1,3	5,2	2,2
March	6,7	4,7	0,1	2,7	6,2	-2,7
April	3,3	3,7	3,5	-0,1	4,7	0,9
May	1,7	4,1	1,7	5,7	2,9	-2,5
June	1,7	5,5	-1,8	6,2	4,2	-2,3
July	1,2	5,1	-2,5	5,0	5,6	-0,6
August	3,6	2,9	-0,4	5,8	5,2	-2,8
September	2,3	4,8	0,1	3,3	3,9	0,1
October	4,2	1,3	2,2	2,8	3,9	-1,4
November	3,2	2,9	1,1	3,9	2,8	
December	4,5	1,7	2,7	3,7	1,3	
Year	3,6	4,0	0,6	3,6	4,3	

The percentage change is the change in the index of the physical volume of electricity available for distribution of the relevant year compared with the index of the physical volume of electricity available for distribution of the previous year expressed as a percentage.

Table 3 – Seasonally adjusted total volume of electricity available for distribution in South Africa: 2003 to 2008

	Gigawatt-hours						% change between current and previous month
	2003	2004	2005	2006	2007	2008	
January	17 442	18 196	18 477	18 892	19 845	19 558	-1,8
February	17 608	18 755	18 638	18 864	19 826	20 274	3,7
March	17 594	18 409	18 469	18 972	20 19 2	19 680	-2,9
April	17 689	18 357	19 039	19 040	19 931	20 136	2,3
May	17 419	18 134	18 439	19 478	20 025	19 527	-3,0
June	17 601	18 577	18 270	19 440	20 274	19 808	1,4
July	17 823	18 747	18 311	19 237	20 285	20 175	1,9
August	17 939	18 478	18 399	19 455	20 444	19 858	-1,6
September	17 760	18 607	18 654	19 259	20 030	20 078	1,1
October	18 215	18 446	18 884	19 402	20 183	19 894	-0,9
November	18 083	18 616	18 807	19 559	20 111		
December	18 329	18 543	18 973	19 660	19 925		

Table 4 – Indices of the physical volume of electricity production: 2003 to 2008

	Base : 2005=100					
	2003	2004	2005	2006	2007	2008
January	89,6	95,5	97,6	99,8	103,9	105,3
February	84,7	92,2	91,7	94,0	97,2	99,7
March	92,9	98,7	100,2	103,3	107,8	105,6
April	90,1	94,7	98,1	98,0	100,9	102,0
May	97,2	102,4	102,9	108,1	112,0	109,6
June	98,5	105,0	101,6	107,3	112,5	108,8
July	102,5	109,5	105,5	110,8	116,6	115,2
August	102,4	104,3	103,0	109,1	114,1	110,3
September	97,0	99,5	99,1	101,8	105,5	104,8
October	102,2	102,1	102,5	107,2	109,1	1/ 109,4
November	96,4	98,5	99,4	103,3	106,9	
December	94,0	96,0	98,2	100,9	104,6	
Year	95,6	99,9	100,0	103,6	107,6	

1/ Preliminary.

Table 5 – Annual percentage change in indices of the physical volume of electricity production: 2003 to 2008

	2003	2004	2005	2006	2007	2008
January	5,8	6,6	2,2	2,3	4,1	1,3
February	7,2	8,9	-0,5	2,5	3,4	2,6
March	8,4	6,2	1,5	3,1	4,4	-2,0
April	5,9	5,1	3,6	-0,1	3,0	1,1
May	3,3	5,3	0,5	5,1	3,6	-2,1
June	3,9	6,6	-3,2	5,6	4,8	-3,3
July	3,1	6,8	-3,7	5,0	5,2	-1,2
August	8,4	1,9	-1,2	5,9	4,6	-3,3
September	7,4	2,6	-0,4	2,7	3,6	-0,7
October	8,4	-0,1	0,4	4,6	1,8	0,3
November	5,4	2,2	0,9	3,9	3,5	
December	7,6	2,1	2,3	2,7	3,7	
Year	6,2	4,4	0,1	3,7	3,8	

The percentage change is the change in the index of the physical volume of electricity production of the relevant year compared with the index of the physical volume of electricity production of the previous year expressed as a percentage.

Table 6 – Seasonally adjusted indices of the physical volume of electricity production: 2003 to 2008

	Base : 2005=100						% change between current and previous month
	2003	2004	2005	2006	2007	2008	
January	92,0	98,1	100,2	102,2	106,2	107,6	-0,8
February	93,0	101,1	100,3	102,6	105,9	108,6	0,9
March	93,1	98,7	100,1	103,1	107,6	105,4	-2,9
April	94,4	99,2	102,8	102,7	105,8	107,0	1,5
May	93,6	98,7	99,2	104,1	107,8	105,4	-1,5
June	94,4	100,8	97,7	103,4	108,6	105,2	-0,2
July	94,8	101,6	98,1	103,1	108,4	107,2	1,9
August	97,8	99,7	98,6	104,4	109,3	105,6	-1,5
September	97,7	100,5	100,5	103,5	107,5	107,0	1,3
October	99,4	99,5	100,1	104,7	106,7	107,0	0,0
November	97,9	100,1	100,9	104,9	108,5		
December	98,9	100,4	102,2	104,8	108,5		

Table 7 – Total volume of electricity imported: 2003 to 2008

Month	Gigawatt-hours					
	2003	2004	2005	2006	2007	2008
January	705	828	729	872	1 088	638
February	637	811	714	646	942	885
March	706	863	533	581	973	802
April	547	641	598	587	1 055	844
May	569	547	849	879	900	762
June	518	560	813	881	880	1 002
July	792	607	856	926	984	1 089
August	424	618	883	930	1 045	1 076
September	266	590	686	971	1 026	1 044
October	272	536	836	682	1 040	1/ 640
November	583	746	865	862	796	
December	720	679	837	965	619	
Year	6 739	8 026	9 199	9 782	11 348	

1/ Preliminary.

Table 8 – Total volume of electricity exported: 2003 to 2008

Month	Gigawatt-hours					
	2003	2004	2005	2006	2007	2008
January	578	1 037	1 030	1 056	1 134	1 278
February	508	977	901	1 050	1 060	1 101
March	607	1 027	968	1 129	1 231	1 136
April	619	951	991	1 017	1 132	998
May	805	944	1 083	1 046	1 203	1 119
June	798	1 057	1 096	1 102	1 256	1 159
July	944	1 140	1 102	1 239	1 301	1 249
August	1 030	1 049	1 144	1 262	1 252	1 220
September	1 051	1 048	1 134	1 239	1 186	1 198
October	1 116	1 112	1 161	1 311	1 252	1/ 1 258
November	1 025	1 082	1 119	1 186	1 256	
December	1 055	1 029	1 155	1 129	1 233	
Year	10 136	12 453	12 884	13 766	14 496	

1/ Preliminary.

Table 9a – Electricity produced and consumed in power stations, purchased and sold outside South Africa and available for distribution in South Africa (monthly figures)

		Gigawatt-hours				
		October 2007	September 2008	October 2008 1/	% Change between October 2007 and October 2008	Difference between October 2007 and October 2008
Total - All producers	Electricity produced	22 272	21 388	22 330	0,3	58
	Purchased outside South Africa (import)	1 040	1 044	640	-38,5	-400
	Consumed in power stations and auxiliary systems	1 625	1 478	1 569	-3,4	-56
	Sold outside South Africa (export)	1 252	1 198	1 258	0,5	6
	Electricity available for distribution in South Africa	20 435	19 755	20 143	-1,4	-292
ESKOM	Electricity produced	21 371	20 546	21 539	0,8	168
	Purchased outside South Africa (import)	1 040	1 044	640	-38,5	-400
	Consumed in power stations and auxiliary systems	1 555	1 410	1 505	-3,2	-50
	Sold outside South Africa (export)	1 252	1 198	1 258	0,5	6
	Electricity available for distribution in South Africa	19 604	18 982	19 416	-1,0	-188

Table 9b – Electricity produced and consumed in power stations, purchased and sold outside South Africa and available for distribution in South Africa (cumulative figures)

		Gigawatt-hours			
		January to October 2007	January to October 2008 1/	% Change between January to October 2007 and January to October 2008	Difference between January to October 2007 and January to October 2008
Total - All producers	Electricity produced	220 326	218 517	-0,8	-1 809
	Purchased outside South Africa (import)	9 933	8 782	-11,6	-1 151
	Consumed in power stations and auxiliary systems	16 028	15 623	-2,5	-405
	Sold outside South Africa (export)	12 007	11 716	-2,4	-291
	Electricity available for distribution in South Africa	202 225	199 956	-1,1	-2 269
ESKOM	Electricity produced	211 561	209 514	-1,0	-2 047
	Purchased outside South Africa (import)	9 933	8 782	-11,6	-1 151
	Consumed in power stations and auxiliary systems	15 344	14 908	-2,8	-436
	Sold outside South Africa (export)	12 007	11 716	-2,4	-291
	Electricity available for distribution in South Africa	194 145	191 669	-1,3	-2 476

1/ Preliminary.

Table 10 – Electricity distributed by Eskom to provinces for 2007 and 2008 1/

		Gigawatt-hours									
		Western Cape	Eastern Cape	Northern Cape	Free State	KwaZulu-Natal	North West	Gauteng	Mpumalanga	Limpopo	Total South Africa
2007	January	1 955	770	456	780	3 541	2 168	4 809	2 835	930	18 244
	February	1 817	746	410	718	3 326	2 074	4 583	2 561	878	17 113
	March	2 018	816	467	793	3 650	2 299	5 070	2 884	965	18 962
	April	1 861	854	371	769	3 416	2 079	4 758	2 665	915	17 688
	May	2 012	951	401	825	3 702	2 279	5 563	2 866	975	19 574
	June	1 989	828	413	841	3 643	2 231	5 788	2 814	957	19 504
	July	2 007	820	442	884	3 805	2 257	6 013	2 974	966	20 168
	August	2 060	825	417	840	3 738	2 268	5 635	2 918	961	19 662
	September	1 904	884	401	790	3 581	2 254	4 930	2 764	927	18 435
	October	1 985	812	413	775	3 693	2 335	5 125	2 878	944	18 960
	November	1 907	763	419	801	3 574	2 285	4 963	2 773	915	18 400
	December	1 895	696	417	740	3 524	1 986	4 760	2 770	937	17 725
	Year	23 410	9 765	5 027	9 556	43 193	26 515	61 997	33 702	11 270	224 435
	Year to date	19 608	8 306	4 191	8 015	36 095	22 244	52 274	28 159	9 418	188 310
2008	January	1 928	749	396	749	3 552	2 207	4 861	2 661	874	17 977
	February	1 839	758	396	700	3 390	2 102	4 640	2 600	898	17 323
	March	1 937	779	393	749	3 363	2 217	4 945	2 801	934	18 118
	April	1 893	753	363	717	3 322	2 089	4 784	2 796	934	17 651
	May	1 985	760	373	796	3 417	2 141	5 414	2 990	1 015	18 891
	June	1 987	834	374	800	3 333	2 142	5 523	2 966	992	18 951
	July	2 065	864	410	839	3 571	2 234	5 919	3 078	1 044	20 024
	August	1 999	845	406	757	3 575	2 180	5 438	2 937	1 039	19 176
	September	1 975	829	419	785	3 460	2 093	5 009	2 806	1 005	18 381
	October 2/	1 952	838	442	803	3 575	2 192	4 983	2 985	1 010	18 780
	Year to date	19 560	8 009	3 972	7 695	34 558	21 597	51 516	28 620	9 745	185 272

1/ Wholesale energy as delivered by Eskom to the various provinces.

2/ Preliminary.

Explanatory Notes

Introduction	1	Statistics South Africa (Stats SA) conducts a monthly sample survey of the electricity industry covering electricity undertakings and establishments (branches). This statistical release contains information regarding the number of electricity units generated and available for distribution in South Africa, the number of units purchased and sold outside South Africa and the number of units distributed by Eskom by province on a monthly basis. Both actual and seasonally adjusted figures are published.
	2	This statistical release reflects indices of the physical volume of electricity production on the basis of 2005=100. In accordance with international practice, the indices have to be rebased every five years to a new base year.
	3	In order to improve timeliness of the publication, some information for the current month may have been estimated due to late submission by respondents. These estimates will be revised in the next statistical release(s) as soon as actual information is available.
Purpose of the survey	4	The results of the monthly electricity generated and available for distribution survey are used to compile estimates of the Gross Domestic Product (GDP) and its components, which are used in monitoring the state of the economy and formulation of economic policy.
Scope of the survey	5	This survey covers electricity undertakings and establishments conducting activities concerned with the generation or transmission and distribution of electricity, including electrical power installations, which, as subsidiary divisions of undertakings, produce electricity for regular use by these undertakings.
Classification	6	The 1993 edition of the <i>Standard Industrial Classification of all Economic Activities (SIC)</i> , Fifth Edition, Report No. 09-90-02, was used to classify the statistical units in the survey. The SIC is based on the 1990 <i>International Standard Industrial Classification of all Economic Activities (ISIC)</i> with suitable adaptations for local conditions. Each statistical unit is classified to an industry, which reflects the predominant activity of the electricity undertaking or establishment.
Response rate	7	The response rate for the survey on electricity generated and available for distribution for October 2008 was 99%.
Statistical unit	8	The basic statistical unit for the collection of information is the electricity undertaking or establishment. The electricity undertaking or establishment is the smallest economic unit that functions as a separate entity. Each statistical unit is classified to an industry (see paragraph 5).
Survey methodology and design	9	All statistical units are stratified by type of economic activity according to the <i>Standard Industrial Classification of all Economic Activities (SIC)</i> and measure of size, where measure of size is the volume of electricity generated by the electricity undertaking or establishment. All large undertakings or establishments (size category one cases) are completely enumerated. A sample is drawn from medium and small size undertakings and establishments by systematically selecting undertakings or establishments within each size category. An electricity undertaking or establishment with a total generating capacity of less than 500 kilowatt is excluded from the sample.
	10	The survey is conducted by mail each month collecting information from a sample of 22 electricity undertakings or establishments.
Monthly production indices	11	The calculation of the monthly production indices is based on the number of electricity units produced.

Benchmarking	12	The index of physical volume of electricity production should provide an accurate reflection of the trend of activities of the relevant industry. The level of activities as measured by the monthly electricity generated and available for distribution survey is based on information received from a sample of electricity undertakings and establishments, which are weighted according to the original sample, designed in order to represent the population of electricity undertakings and establishments. It is necessary to adjust the level of activities as measured by the monthly sample survey to the level of activities as measured periodically by the Census of electricity, gas and steam. This procedure, whereby the latest results of an economic census are used to compile more accurate level estimates for a certain year, is known as benchmarking.
	13	The results of the 1995 Census of electricity, gas and steam served as benchmarks to verify or adjust the level of the monthly physical volume of electricity production indices collected through the monthly sample survey. The level adjustments were done on the volume indices for August of the relevant census year (the 1995 census year covered the period 1 January 1995 to 31 December 1995 and therefore, the benchmarking was done using the index of August 1995 as reference point).
Seasonal adjustment	14	Seasonally adjusted estimates of all items are generated each month, using the X-11 Seasonal Adjustment Program developed by US Bureau of the Census Economic Research and Analyses Division, 1968. Seasonal adjustment is a means of removing the estimated effects of normal seasonal variation from the series so that the effects of other influences on the series can be more clearly recognized. Seasonal adjustment does not aim to remove irregular or non-seasonal influences, which may be present in any particular month. Influences that are volatile or unsystematic can still make it difficult to interpret the movement of the series even after adjustment for seasonal variations. This means the month-to-month movements of seasonally adjusted estimates may not be reliable indicators of trend behaviour.
Trend cycle	15	The trend is the long-term pattern or movement of a time series. The X-11 Seasonal Adjustment Program is used for smoothing seasonally adjusted estimates.
Related publications	16	Users may also wish to refer to the following publications which are available from Stats SA - <ul style="list-style-type: none"> • <i>Bulletin of Statistics.</i> • <i>SA Statistics.</i>
Unpublished statistics	17	In some cases Stats SA can also make available statistics, which are not published. The statistics can be made available as computer printouts, on diskette or CD. Generally a charge is made for providing unpublished statistics.
Rounding-off figures	18	The figures in the tables have, where necessary, been rounded off to the nearest digit shown. There may, therefore, be slight discrepancies between the sums of the constituent items and the totals shown.
Pre-release policy	19	Stats SA pre-release policy may be inspected at its website, www.statssa.gov.za .

Glossary

Electricity undertaking	An electricity undertaking is an undertaking concerned with the generation or transmission and distribution of electricity, including electrical power installations, which as subsidiary divisions of undertakings produce electricity for regular use by these undertakings.										
Index of physical volume of electricity production	A statistical measure of the change in the volume of production of electricity in a given period and the volume of production of electricity in the base period. The base period is 2005. The production in the base period is set at 100.										
Industry	An industry consists of a group of undertakings or establishments engaged in the same or similar kinds of economic activity. Industries are defined in the 1993 <i>System of National Accounts (1993 SNA)</i> in the same way as in the <i>Standard Industrial Classification of all Economic Activities (SIC)</i> , Fifth Edition, Report No. 09-90-02.										
Unit of electricity	One gigawatt-hour of electricity is equal to one million kilowatt-hours. A kilowatt-hour is the basic unit of electrical energy equal to one kilowatt of power supplied to or taken from an electric circuit steadily for one hour. One kilowatt-hour equals one thousand watt-hours.										
Symbols and abbreviations	<table border="0"> <tr> <td>GDP</td> <td>Gross Domestic Product</td> </tr> <tr> <td>ISIC</td> <td>International Standard Industrial Classification</td> </tr> <tr> <td>SIC</td> <td>Standard Industrial Classification of all Economic Activities</td> </tr> <tr> <td>Stats SA</td> <td>Statistics South Africa</td> </tr> <tr> <td>*</td> <td>Revised figures</td> </tr> </table>	GDP	Gross Domestic Product	ISIC	International Standard Industrial Classification	SIC	Standard Industrial Classification of all Economic Activities	Stats SA	Statistics South Africa	*	Revised figures
GDP	Gross Domestic Product										
ISIC	International Standard Industrial Classification										
SIC	Standard Industrial Classification of all Economic Activities										
Stats SA	Statistics South Africa										
*	Revised figures										

General information

Stats SA publishes approximately 300 different statistical releases each year. It is not economically viable to produce them in more than one of South Africa's eleven official languages. Since the releases are used extensively, not only locally but also by international economic and social-scientific communities, Stats SA releases are published in English only.

Stats SA has copyright on this publication. Users may apply the information as they wish, provided that they acknowledge Stats SA as the source of the basic data wherever they process, apply, utilise, publish or distribute the data: and also that they specify that the relevant application and analysis (where applicable) result from their own processing of the data.

Advanced release calendar

An advanced release calendar is disseminated on www.statssa.gov.za

Stats SA products

A complete set of Stats SA publications is available at the Stats SA Library and the following libraries:

National Library of South Africa, Pretoria Division
National Library of South Africa, Cape Town Division
Natal Society Library, Pietermaritzburg
Library of Parliament, Cape Town
Bloemfontein Public Library
Johannesburg Public Library
Eastern Cape Library Services, King William's Town
Central Regional Library, Polokwane
Central Reference Library, Nelspruit
Central Reference Collection, Kimberley
Central Reference Library, Mmabatho

Stats SA also provides a subscription service.

Electronic services

A large range of data is available via on-line services, diskette, CD and computer printouts. For more details about our electronic data services, contact (012) 310 8600/8390/8351/8496/4892/8095.

You can visit us on the Internet at: www.statssa.gov.za

General enquiries

Telephone number: (012) 336 0142/ 310 8986 (technical enquiries)
(012) 310 8161 (orders)
(012) 310 4883/ 4885/ 8018 (library)

Fax number: (012) 310 8664 (technical enquiries)

email: gerdab@statssa.gov.za (technical enquiries)
nicolaic@statssa.gov.za (technical enquiries)
orapelengm@statssa.gov.za (technical enquiries)
info@statssa.gov.za (user information services)
distribution@statssa.gov.za (orders)

Postal address: Private Bag X44, Pretoria, 0001

Produced by Stats SA