

# Statistical release

## P4141

# Electricity generated and available for distribution (preliminary)

**November 2007**

**Embargoed until:  
8 January 2008  
13:00**

**Enquiries:**

User information services  
Tel: (012) 310 8600/ 8390/ 8351

**Forthcoming issue:**

December 2007

**Expected release date**

31 January 2008

**Contents**

**Page**

**SUMMARY OF FINDINGS: ELECTRICITY GENERATED AND AVAILABLE FOR DISTRIBUTION (NOVEMBER 2007)**.....**2**

**Key findings** .....**2**

Consumption of electricity increases .....2

Production of electricity increases.....2

Distribution of electricity by Eskom to the provinces increases.....2

**Key figures** .....**2**

Table A - Selected key figures regarding electricity generated and available for distribution for November 2007 .....2

Table B - Percentage change in the seasonally adjusted quantity of electricity generated and available for distribution between the current quarter and the previous quarter .....3

Table C - Percentage change between the current quarter and the corresponding quarter of the previous year .....3

Figure 1 - Electricity produced and available for distribution in South Africa from 2004 to 2007 .....4

Table 1 - Total volume of electricity available for distribution in South Africa: 2002 to 2007 .....5

Table 2 - Percentage change in electricity available for distribution in South Africa: 2002 to 2007 .....5

Table 3 - Seasonally adjusted total volume of electricity available for distribution in South Africa: 2002 to 2007 .....6

Table 4 - Indices of the physical volume of electricity production: 2002 to 2007.....7

Table 5 - Percentage change in indices of the physical volume of electricity production: 2002 to 2007 .....7

Table 6 - Seasonally adjusted indices of the physical volume of electricity production: 2002 to 2007 .....8

Table 7 - Total volume of electricity imported: 2002 to 2007 .....9

Table 8 - Total volume of electricity exported: 2002 to 2007 .....9

Table 9a - Electricity produced and consumed in power stations, purchased and sold outside South Africa and available for distribution in South Africa (monthly figures) .....10

Table 9b - Electricity produced and consumed in power stations, purchased and sold outside South Africa and available for distribution in South Africa (cumulative figures).....10

Table 10 - Electricity distributed by Eskom by province for 2006 and 2007 .....11

**Explanatory Notes**.....**12**

**Glossary**.....**14**

**General information** .....**15**

## SUMMARY OF FINDINGS: ELECTRICITY GENERATED AND AVAILABLE FOR DISTRIBUTION (NOVEMBER 2007)

### Key findings

#### Consumption of electricity increases

The estimated consumption of electricity in November 2007 increased by 2,8% (541 Gigawatt-hours) compared with November 2006 (see tables A and 9a). The estimated volume of electricity consumed (available for distribution) for the three months ending November 2007 increased by 3,8% (2 174 Gigawatt-hours) compared with the three months ending November 2006 (see tables A and C). Electricity consumption after seasonal adjustment for November 2007 decreased by 0,9% compared with the previous month (see table A).

#### Production of electricity increases

The estimated production of electricity in November 2007 increased by 3,5% (736 Gigawatt-hours) compared with November 2006, of which Eskom reported an increase of 3,2% (657 Gigawatt-hours) (see tables A and 9a). The estimated production of electricity for the three months ending November 2007 increased by 2,9% (1 877 Gigawatt-hours) compared with the three months ending November 2006 (see table C). Furthermore, the estimated production of electricity, after seasonal adjustment, increased by 1,2% for November 2007 compared with the previous month (see table A).

#### Distribution of electricity by Eskom to the provinces increases

Electricity distributed to the provinces increased by 4,8% for the first eleven months of 2007 compared with the first eleven months of 2006, although this increase is not necessarily evident in all of the provinces. Increases were reported for Eastern Cape (19,0% or 1 448 Gigawatt-hours), North West (9,6% or 2 146 Gigawatt-hours), Northern Cape (7,5% or 322 Gigawatt-hours), Mpumalanga (7,8% or 2 249 Gigawatt-hours), Free State (5,4% or 452 Gigawatt-hours), Western Cape (5,1% or 1 045 Gigawatt-hours) and Gauteng (4,0% or 2 176 Gigawatt-hours). Slightly less electricity was distributed to KwaZulu-Natal (-0,2% or -76 Gigawatt-hours) and Limpopo (-2,5% or -263 Gigawatt-hours) than during the first eleven months of 2006 (see table 10).

### Key figures

Table A - Selected key figures regarding electricity generated and available for distribution for November 2007

Estimates	November 2007 1/	% change between November 2006 and November 2007	% change between September 2006 and September 2007	% change between January to November 2006 and January to November 2007
Electricity available for distribution (Gigawatt-hours)	19 785	2,8	3,8	4,6
Index of the physical volume of electricity production (2005=100)	106,9	3,5	3,0	3,8

1/ Preliminary.

Seasonally adjusted estimates	November 2007	% change between October and November 2007	% change between June to August 2007 and September to November 2007
Electricity available for distribution (Gigawatt-hours)	20 046	-0,9	-1,0
Index of the physical volume of electricity production (2005=100)	108,3	1,2	-1,1

**Table B - Percentage change in the seasonally adjusted quantity of electricity generated and available for distribution between the current quarter and the previous quarter**

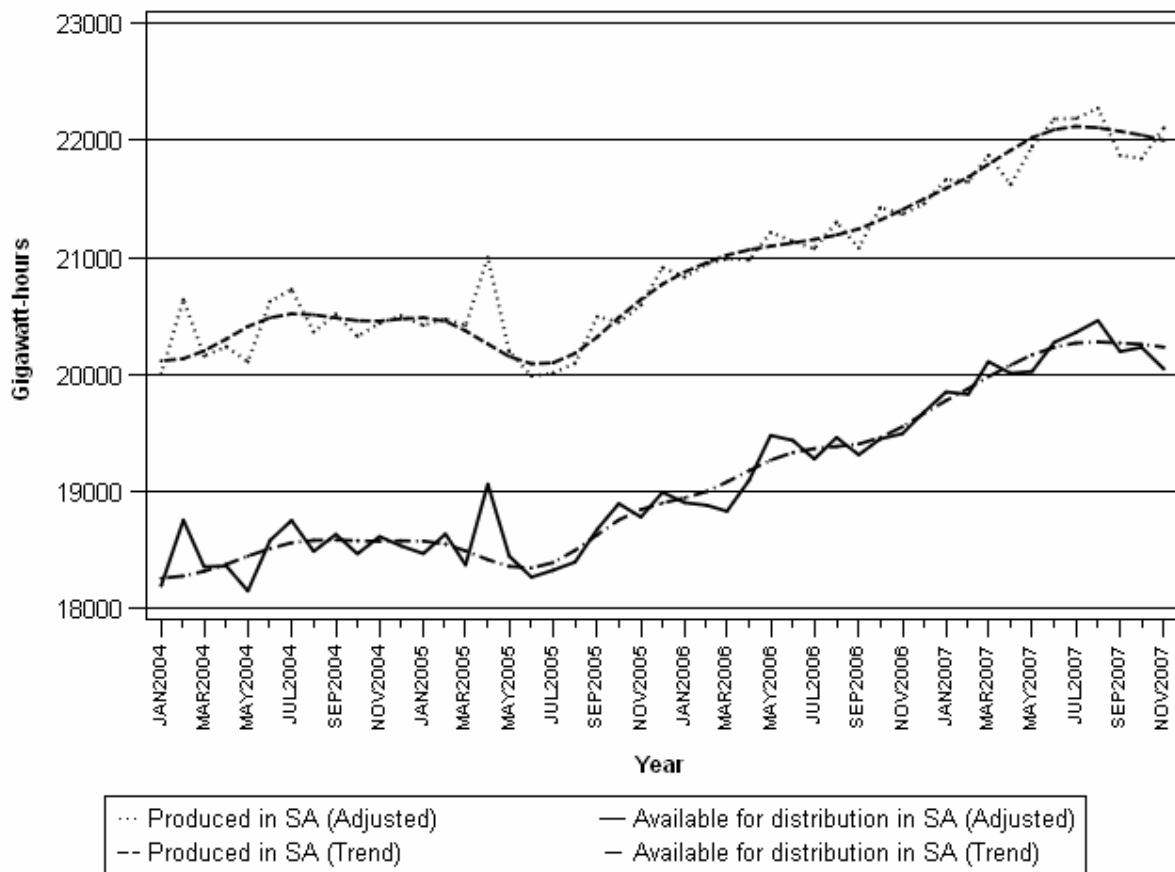
Gigawatt-hours	Seasonally adjusted quantity June to August 2007	Seasonally adjusted quantity September to November 2007	% change between June to August 2007 and September to November 2007	Quantity difference between June to August 2007 and September to November 2007
Electricity produced	66 640	65 820	-1,2	820
Electricity available for distribution in South Africa	61 091	60 472	-1,0	619

**Table C - Percentage change between the current quarter and the corresponding quarter of the previous year**

Gigawatt-hours	Actual quantity September to November 2006	Actual quantity September to November 2007	% change between September to November 2006 and September to November 2007	Quantity difference between September to November 2006 and September to November 2007
Electricity produced	63 728	65 605	2,9	1 877
Purchased outside South Africa (import)	2 515	2 856	13,6	341
Consumed in Power stations and auxiliary systems	4 614	4 822	4,5	208
Sold outside South Africa (export)	3 736	3 569	-4,5	167
Electricity available for distribution in South Africa	57 894	60 068	3,8	2 174

Figure 1 below shows the seasonally adjusted and trend patterns for electricity produced and available for distribution in South Africa between January 2004 and November 2007. There was a gradual upward movement in the trend cycles from the beginning of the period until August 2004. From August 2004 up until February 2005 the trend cycles moved sideways, followed by a declining trend in both electricity production and consumption between March and June 2005. From August 2005 to August 2007 the trends moved upwards, but started to decline thereafter.

**Figure 1 - Electricity produced and available for distribution in South Africa from 2004 to 2007**



**P J Lehohla**  
**Statistician-General**

**Detailed results: Tables**

**Table 1 - Total volume of electricity available for distribution in South Africa: 2002 to 2007**

	2002	2003	2004	2005	2006	2007
January	16 191	17 095	17 850	18 149	18 603	19 560
February	15 215	16 168	17 277	17 169	17 396	18 298
March	16 552	17 655	18 476	18 487	18 982	20 269
April	16 362	16 905	17 524	18 133	18 122	18 984
May	17 852	18 159	18 909	19 224	20 312	20 907
June	18 017	18 330	19 337	18 983	20 166	21 027
July	18 956	19 183	20 156	19 657	20 632	21 785
August	18 064	18 714	19 265	19 191	20 307	21 350
September	17 125	17 526	18 362	18 384	18 987	19 850
October	17 741	18 480	18 714	19 127	19 663	20 433
November	17 233	17 790	18 314	18 523	19 244	1/ 19 785
December	16 712	17 456	17 754	18 230	18 909	
Year	206 020	213 461	221 938	223 257	231 323	

1/ Preliminary.

**Table 2 - Percentage change in electricity available for distribution in South Africa: 2002 to 2007**

	Percentage					
	2002	2003	2004	2005	2006	2007
January	0,8	5,6	4,4	1,7	2,5	5,1
February	2,3	6,3	6,9	-0,6	1,3	5,2
March	1,4	6,7	4,7	0,1	2,7	6,8
April	5,5	3,3	3,7	3,5	-0,1	4,8
May	5,5	1,7	4,1	1,7	5,7	2,9
June	7,3	1,7	5,5	-1,8	6,2	4,3
July	5,2	1,2	5,1	-2,5	5,0	5,6
August	4,4	3,6	2,9	-0,4	5,8	5,1
September	5,2	2,3	4,8	0,1	3,3	4,5
October	5,6	4,2	1,3	2,2	2,8	3,9
November	8,0	3,2	2,9	1,1	3,9	2,8
December	9,8	4,5	1,7	2,7	3,7	
Year	5,1	3,6	4,0	0,6	3,6	

**Table 3 - Seasonally adjusted total volume of electricity available for distribution in South Africa: 2002 to 2007**

	Gigawatt-hours						% change between current and previous month
	2002	2003	2004	2005	2006	2007	
<b>January</b>	16 520	17 442	18 195	18 469	18 904	19 850	0,9
<b>February</b>	16 566	17 607	18 756	18 637	18 882	19 830	-0,1
<b>March</b>	16 454	17 569	18 356	18 372	18 831	20 109	1,4
<b>April</b>	17 074	17 688	18 363	19 064	19 096	20 010	-0,5
<b>May</b>	17 153	17 432	18 150	18 448	19 479	20 025	0,1
<b>June</b>	17 309	17 602	18 582	18 268	19 436	20 274	1,2
<b>July</b>	17 597	17 826	18 752	18 327	19 277	20 357	0,4
<b>August</b>	17 287	17 942	18 488	18 397	19 461	20 460	0,5
<b>September</b>	17 305	17 771	18 634	18 678	19 313	20 195	-1,3
<b>October</b>	17 449	18 213	18 467	18 896	19 449	20 231	0,2
<b>November</b>	17 516	18 088	18 615	18 781	19 494	20 046	-0,9
<b>December</b>	17 622	18 327	18 535	18 993	19 677		

**Table 4 - Indices of the physical volume of electricity production: 2002 to 2007**

	Base : 2005=100					
	2002	2003	2004	2005	2006	2007
January	84,7	89,6	95,5	97,6	99,8	103,9
February	79,0	84,7	92,2	91,7	94,0	97,2
March	85,7	92,9	98,7	100,2	103,3	107,8
April	85,1	90,1	94,7	98,1	98,0	100,9
May	94,1	97,2	102,4	102,9	108,1	112,0
June	94,8	98,5	105,0	101,6	107,3	112,5
July	99,4	102,5	109,5	105,5	110,8	116,6
August	94,5	102,4	104,3	103,0	109,1	114,1
September	90,3	97,0	99,5	99,1	101,8	105,5
October	94,3	102,2	102,1	102,5	107,2	109,1
November	91,5	96,4	98,5	99,4	103,3	1/ 106,9
December	87,4	94,0	96,0	98,2	100,9	
Year	90,1	95,6	99,9	100,0	103,6	

1/ Preliminary.

**Table 5 - Percentage change in indices of the physical volume of electricity production: 2002 to 2007**

	2002	2003	2004	2005	2006	2007
January	-0,1	5,8	6,6	2,2	2,3	4,1
February	1,9	7,2	8,9	-0,5	2,5	3,4
March	1,2	8,4	6,2	1,5	3,1	4,4
April	5,7	5,9	5,1	3,6	-0,1	3,0
May	6,2	3,3	5,3	0,5	5,1	3,6
June	9,0	3,9	6,6	-3,2	5,6	4,8
July	4,0	3,1	6,8	-3,7	5,0	5,2
August	1,7	8,4	1,9	-1,2	5,9	4,6
September	4,5	7,4	2,6	-0,4	2,7	3,6
October	6,7	8,4	-0,1	0,4	4,6	1,8
November	9,2	5,4	2,2	0,9	3,9	3,5
December	10,4	7,6	2,1	2,3	2,7	
Year	5,0	6,2	4,4	0,1	3,7	

The percentage change is the change in the index of the physical volume of electricity production of the relevant year compared with the index of the physical volume of electricity production of the previous year expressed as a percentage.



**Table 6 - Seasonally adjusted indices of the physical volume of electricity production: 2002 to 2007**

	Base : 2005=100						% change between current and previous month
	2002	2003	2004	2005	2006	2007	
<b>January</b>	86,8	92,0	98,1	100,1	102,3	106,3	1,1
<b>February</b>	86,8	93,0	101,0	100,2	102,6	106,0	-0,3
<b>March</b>	85,8	93,1	98,7	99,9	102,8	107,2	1,1
<b>April</b>	89,3	94,4	99,3	102,9	103,0	106,2	-0,9
<b>May</b>	90,6	93,6	98,7	99,1	104,1	107,7	1,4
<b>June</b>	90,9	94,4	100,8	97,6	103,2	108,2	0,5
<b>July</b>	91,8	94,8	101,6	98,1	103,2	108,7	0,5
<b>August</b>	90,1	97,9	99,7	98,5	104,3	109,1	0,4
<b>September</b>	90,7	97,7	100,5	100,4	103,4	107,3	-1,6
<b>October</b>	91,7	99,4	99,6	100,2	105,0	107,0	-0,3
<b>November</b>	93,0	98,0	100,1	100,8	104,7	108,3	1,2
<b>December</b>	92,6	98,9	100,4	102,4	105,1		

**Table 7 - Total volume of electricity imported: 2002 to 2007**

Month	Gigawatt-hours					
	2002	2003	2004	2005	2006	2007
January	670	705	828	729	872	1 086
February	643	637	811	714	646	939
March	783	706	863	533	581	970
April	733	547	641	598	587	1 052
May	658	569	547	849	879	897
June	704	518	560	813	881	880
July	702	792	607	856	926	980
August	721	424	618	883	930	1 041
September	637	266	590	686	971	1 024
October	454	272	536	836	682	1 038
November	477	583	746	865	862	1/ 794
December	691	720	679	837	965	
Year	7 873	6 739	8 026	9 199	9 782	

1/ Preliminary.

**Table 8 - Total volume of electricity exported: 2002 to 2007**

Month	Gigawatt-hours					
	2002	2003	2004	2005	2006	2007
January	558	578	1 037	1 030	1 056	1 133
February	478	508	977	901	1 050	1 060
March	529	607	1 027	968	1 129	1 119
April	525	619	951	991	1 017	1 127
May	578	805	944	1 083	1 046	1 193
June	601	798	1 057	1 096	1 102	1 248
July	614	944	1 140	1 102	1 239	1 292
August	605	1 030	1 049	1 144	1 262	1 251
September	628	1 051	1 048	1 134	1 239	1 065
October	626	1 116	1 112	1 161	1 311	1 251
November	600	1 025	1 082	1 119	1 186	1/ 1 253
December	608	1 055	1 029	1 155	1 129	
Year	6 950	10 136	12 453	12 884	13 766	

1/ Preliminary.

**Table 9a - Electricity produced and consumed in power stations, purchased and sold outside South Africa and available for distribution in South Africa (monthly figures)**

		Gigawatt-hours				
		November 2006	October 2007	November 2007	% Change between November 2006 and November 2007	Difference between November 2006 and November 2007
<b>Total - All producers</b>	Electricity produced	21 074	22 272	21 810	3,5	736
	Purchased outside South Africa (import)	862	1 038	794	-7,9	-68
	Consumed in power stations and auxiliary systems	1 507	1 625	1 566	3,9	59
	Sold outside South Africa (export)	1 186	1 251	1 253	5,6	67
	Electricity available for distribution in South Africa	19 244	20 433	19 785	2,8	541
<b>ESKOM</b>	Electricity produced	20 261	21 371	20 918	3,2	657
	Purchased outside South Africa (import)	862	1 038	794	-7,9	-68
	Consumed in power stations and auxiliary systems	1 432	1 555	1 489	4,0	57
	Sold outside South Africa (export)	1 186	1 251	1 253	5,6	67
	Electricity available for distribution in South Africa	18 505	19 601	18 969	2,5	464

**Table 9b - Electricity produced and consumed in power stations, purchased and sold outside South Africa and available for distribution in South Africa (cumulative figures)**

		Gigawatt-hours			
		January to November 2006	January to November 2007 1/	% Change between January to November 2006 and January to November 2007	Difference between January to November 2006 and January to November 2007
<b>Total - All producers</b>	Electricity produced	233 202	242 136	3,8	8 934
	Purchased outside South Africa (import)	8 817	10 701	21,4	1 884
	Consumed in power stations and auxiliary systems	16 968	17 594	3,7	626
	Sold outside South Africa (export)	12 637	12 992	2,8	355
	Electricity available for distribution in South Africa	212 414	222 248	4,6	9 834
<b>ESKOM</b>	Electricity produced	223 833	232 479	3,9	8 646
	Purchased outside South Africa (import)	8 817	10 701	21,4	1 884
	Consumed in power stations and auxiliary systems	16 109	16 833	4,5	724
	Sold outside South Africa (export)	12 637	12 992	2,8	355
	Electricity available for distribution in South Africa	203 903	213 352	4,6	9 449

1/ Preliminary.

**Table 10 - Electricity distributed by Eskom by province for 2006 and 2007 1/**

		Gigawatt-hours									
		Western Cape	Eastern Cape	Northern Cape	Free State	KwaZulu-Natal	North West	Gauteng	Mpumalanga	Limpopo	Total South Africa
2006	January	1 852	626	388	712	3 611	2 073	4 442	2 635	904	17 242
	February	1 703	595	339	721	3 410	1 934	4 129	2 343	1 023	16 197
	March	1 879	639	394	740	3 747	2 019	4 690	2 684	890	17 682
	April	1 809	591	357	730	3 572	1 904	4 514	2 550	874	16 901
	May	1 906	665	374	809	3 826	2 082	5 525	2 784	955	18 925
	June	1 832	670	363	732	3 870	2 093	5 476	2 648	964	18 647
	July	1 946	788	399	810	3 657	2 151	5 707	2 661	998	19 116
	August	1 939	780	391	826	3 563	2 103	5 605	2 560	1 000	18 767
	September	1 828	753	409	736	3 456	1 963	4 963	2 487	993	17 588
	October	1 909	769	435	786	3 590	2 079	5 045	2 644	1 037	18 294
	November	1 867	745	439	762	3 443	1 982	4 965	2 687	958	17 848
	December	1 912	640	439	777	3 429	2 036	4 667	2 705	924	17 529
	Year	22 382	8 261	4 727	9 141	43 174	24 419	59 728	31 388	11 520	214 736
	Year to date	20 470	7 621	4 288	8 364	39 745	22 383	55 061	28 683	10 596	197 207
2007	January	1 955	770	456	780	3 541	2 168	4 809	2 835	930	18 244
	February	1 817	746	410	718	3 326	2 074	4 583	2 561	878	17 113
	March	2 018	816	467	793	3 650	2 299	5 070	2 884	965	18 962
	April	1 861	854	371	769	3 416	2 079	4 758	2 665	915	17 688
	May	2 012	951	401	825	3 702	2 279	5 563	2 866	975	19 574
	June	1 989	828	413	841	3 643	2 231	5 788	2 814	957	19 504
	July	2 007	820	442	884	3 805	2 257	6 013	2 974	966	20 168
	August	2 060	825	417	840	3 738	2 268	5 635	2 918	961	19 662
	September	1 904	884	401	790	3 581	2 254	4 930	2 764	927	18 435
	October	1 985	812	413	775	3 693	2 335	5 125	2 878	944	18 960
	November 2/	1 907	763	419	801	3 574	2 285	4 963	2 773	915	18 400
	Year to date	21 515	9 069	4 610	8 816	39 669	24 529	57 237	30 932	10 333	206 710

1/ Wholesale energy as delivered by Eskom to the various provinces.

2/ Preliminary.

\* Revised.

## Explanatory Notes

<b>Introduction</b>	1	Statistics South Africa (Stats SA) conducts a monthly sample survey of the electricity industry covering electricity undertakings and establishments (branches). This statistical release contains information regarding the number of electricity units generated and available for distribution in South Africa, the number of units purchased and sold outside South Africa and the number of units distributed by Eskom by province on a monthly basis. Both actual and seasonally adjusted figures are published.
	2	This statistical release reflects indices of the physical volume of electricity production on the basis of 2005=100. In accordance with international practice, the indices have to be rebased every five years to a new base year.
	3	In order to improve timeliness of the publication, some information for the current month may have been estimated due to late submission by respondents. These estimates will be revised in the next statistical release(s) as soon as actual information is available.
<b>Purpose of the survey</b>	4	The results of the monthly electricity generated and available for distribution survey are used to compile estimates of the Gross Domestic Product (GDP) and its components, which are used in monitoring the state of the economy and formulation of economic policy.
<b>Scope of the survey</b>	5	This survey covers electricity undertakings and establishments conducting activities concerned with the generation or transmission and distribution of electricity, including electrical power installations, which, as subsidiary divisions of undertakings, produce electricity for regular use by these undertakings.
<b>Classification</b>	6	The 1993 edition of the <i>Standard Industrial Classification of all Economic Activities (SIC)</i> , Fifth Edition, Report No. 09-90-02, was used to classify the statistical units in the survey. The SIC is based on the 1990 <i>International Standard Industrial Classification of all Economic Activities (ISIC)</i> with suitable adaptations for local conditions. Each statistical unit is classified to an industry, which reflects the predominant activity of the electricity undertaking or establishment.
<b>Response rate</b>	7	The response rate for the survey on electricity generated and available for distribution for November 2007 was 100%.
<b>Statistical unit</b>	8	The basic statistical unit for the collection of information is the electricity undertaking or establishment. The electricity undertaking or establishment is the smallest economic unit that functions as a separate entity. Each statistical unit is classified to an industry (see paragraph 5).
<b>Survey methodology and design</b>	9	All statistical units are stratified by type of economic activity according to the <i>Standard Industrial Classification of all Economic Activities (SIC)</i> and measure of size, where measure of size is the volume of electricity generated by the electricity undertaking or establishment. All large undertakings or establishments (size category one cases) are completely enumerated. A sample is drawn from medium and small size undertakings and establishments by systematically selecting undertakings or establishments within each size category. An electricity undertaking or establishment with a total generating capacity of less than 500 kilowatt is excluded from the sample.
	10	The survey is conducted by mail each month collecting information from a sample of 22 electricity undertakings or establishments.

<b>Monthly production indices</b>	11	The calculation of the monthly production indices is based on the number of electricity units produced.
<b>Benchmarking</b>	12	The index of physical volume of electricity production should provide an accurate reflection of the trend of activities of the relevant industry. The level of activities as measured by the monthly electricity generated and available for distribution survey is based on information received from a sample of electricity undertakings and establishments, which are weighted according to the original sample, designed in order to represent the population of electricity undertakings and establishments. It is necessary to adjust the level of activities as measured by the monthly sample survey to the level of activities as measured periodically by the Census of electricity, gas and steam. This procedure, whereby the latest results of an economic census are used to compile more accurate level estimates for a certain year, is known as benchmarking.
	13	The results of the 1995 Census of electricity, gas and steam served as benchmarks to verify or adjust the level of the monthly physical volume of electricity production indices collected through the monthly sample survey. The level adjustments were done on the volume indices for August of the relevant census year (the 1995 census year covered the period 1 January 1995 to 31 December 1995 and therefore, the benchmarking was done using the index of July 1995 as reference point).
<b>Seasonal adjustment</b>	14	Seasonally adjusted estimates of all items are generated each month, using the X-11 Seasonal Adjustment Program developed by US Bureau of the Census Economic Research and Analyses Division, 1968. Seasonal adjustment is a means of removing the estimated effects of normal seasonal variation from the series so that the effects of other influences on the series can be more clearly recognized. Seasonal adjustment does not aim to remove irregular or non-seasonal influences, which may be present in any particular month. Influences that are volatile or unsystematic can still make it difficult to interpret the movement of the series even after adjustment for seasonal variations. This means the month-to-month movements of seasonally adjusted estimates may not be reliable indicators of trend behaviour.
<b>Trend cycle</b>	15	The trend is the long-term pattern or movement of a time series. The X-11 Seasonal Adjustment Program is used for smoothing seasonally adjusted estimates.
<b>Related publications</b>	16	Users may also wish to refer to the following publications which are available from Stats SA - <ul style="list-style-type: none"> <li>• <i>Bulletin of Statistics.</i></li> <li>• <i>SA Statistics.</i></li> </ul>
<b>Unpublished statistics</b>	17	In some cases Stats SA can also make available statistics, which are not published. The statistics can be made available as computer printouts, on diskette or CD. Generally a charge is made for providing unpublished statistics.
<b>Rounding-off figures</b>	18	The figures in the tables have, where necessary, been rounded off to the nearest digit shown. There may, therefore, be slight discrepancies between the sums of the constituent items and the totals shown.
<b>Pre-release policy</b>	19	Stats SA pre-release policy may be inspected at its website, <a href="http://www.statssa.gov.za">www.statssa.gov.za</a> .

## Glossary

<b>Electricity undertaking</b>	An electricity undertaking is an undertaking concerned with the generation or transmission and distribution of electricity, including electrical power installations, which as subsidiary divisions of undertakings produce electricity for regular use by these undertakings.										
<b>Index of physical volume of electricity production</b>	A statistical measure of the change in the volume of production of electricity in a given period and the volume of production of electricity in the base period. The base period is 2005. The production in the base period is set at 100.										
<b>Industry</b>	An industry consists of a group of undertakings or establishments engaged in the same or similar kinds of economic activity. Industries are defined in the 1993 <i>System of National Accounts (1993 SNA)</i> in the same way as in the <i>Standard Industrial Classification of all Economic Activities (SIC)</i> , Fifth Edition, Report No. 09-90-02.										
<b>Unit of electricity</b>	One gigawatt-hour of electricity is equal to one million kilowatt-hours. A kilowatt-hour is the basic unit of electrical energy equal to one kilowatt of power supplied to or taken from an electric circuit steadily for one hour. One kilowatt-hour equals one thousand watt-hours.										
<b>Symbols and abbreviations</b>	<table border="0"> <tr> <td>GDP</td> <td>Gross Domestic Product</td> </tr> <tr> <td>ISIC</td> <td>International Standard Industrial Classification</td> </tr> <tr> <td>SIC</td> <td>Standard Industrial Classification of all Economic Activities</td> </tr> <tr> <td>Stats SA</td> <td>Statistics South Africa</td> </tr> <tr> <td>*</td> <td>Revised figures</td> </tr> </table>	GDP	Gross Domestic Product	ISIC	International Standard Industrial Classification	SIC	Standard Industrial Classification of all Economic Activities	Stats SA	Statistics South Africa	*	Revised figures
GDP	Gross Domestic Product										
ISIC	International Standard Industrial Classification										
SIC	Standard Industrial Classification of all Economic Activities										
Stats SA	Statistics South Africa										
*	Revised figures										

## General information

Stats SA publishes approximately 300 different statistical releases each year. It is not economically viable to produce them in more than one of South Africa's eleven official languages. Since the releases are used extensively, not only locally but also by international economic and social-scientific communities, Stats SA releases are published in English only.

Stats SA has copyright on this publication. Users may apply the information as they wish, provided that they acknowledge Stats SA as the source of the basic data wherever they process, apply, utilise, publish or distribute the data: and also that they specify that the relevant application and analysis (where applicable) result from their own processing of the data.

## Advanced release calendar

An advanced release calendar is disseminated on [www.statssa.gov.za](http://www.statssa.gov.za)

## Stats SA products

A complete set of Stats SA publications is available at the Stats SA Library and the following libraries:

National Library of South Africa, Pretoria Division  
National Library of South Africa, Cape Town Division  
Natal Society Library, Pietermaritzburg  
Library of Parliament, Cape Town  
Bloemfontein Public Library  
Johannesburg Public Library  
Eastern Cape Library Services, King William's Town  
Central Regional Library, Polokwane  
Central Reference Library, Nelspruit  
Central Reference Collection, Kimberley  
Central Reference Library, Mmabatho

Stats SA also provides a subscription service.

## Electronic services

A large range of data is available via on-line services, diskette, CD and computer printouts. For more details about our electronic data services, contact (012) 310 8600/8390/8351/8496/4892/8095.

You can visit us on the Internet at: [www.statssa.gov.za](http://www.statssa.gov.za)

## General enquiries

Telephone number: (012) 336 0142 (technical enquiries)  
(012) 310 8161 (orders)  
(012) 310 4883/ 4885/ 8018 (library)

Fax number: (012) 310 8664 (technical enquiries)

email: [gerdab@statssa.gov.za](mailto:gerdab@statssa.gov.za) (technical enquiries)  
[nicolaic@statssa.gov.za](mailto:nicolaic@statssa.gov.za) (technical enquiries)  
[info@statssa.gov.za](mailto:info@statssa.gov.za) (user information services)  
[distribution@statssa.gov.za](mailto:distribution@statssa.gov.za) (orders)

Postal address: Private Bag X44, Pretoria, 0001

*Produced by Stats SA*