



The South Africa I know, the home I understand

---

# Statistical release

## P4141

# Electricity generated and available for distribution (Preliminary)

## May 2016

**Embargoed until:  
7 July 2016  
13:00**

**Enquiries:**

Nicolai Claassen  
Tel: (012) 310 8007

**Forthcoming issue:**

June 2016

**Expected release date:**

4 August 2016

## Contents

<b>Electricity generated (produced) in South Africa: results for May 2016</b> .....	<b>2</b>
Table A – Key growth rates in the volume of electricity generated .....	2
Figure 1 – Electricity generated in South Africa .....	2
<b>Electricity distributed (consumed) in South Africa: results for May 2016</b> .....	<b>3</b>
Table B – Key growth rates in the volume of electricity distributed .....	3
Figure 2 – Electricity distributed in South Africa: year-on-year percentage change .....	3
<b>Tables</b> .....	<b>4</b>
Table 1 – Index of the volume of electricity generated (Base: 2010=100) .....	4
Table 2 – Year-on-year percentage change in the volume of electricity generated .....	4
Table 3 – Seasonally adjusted index of the volume of electricity generated.....	4
Table 4 – Volume of electricity distributed in South Africa (gigawatt-hours) .....	5
Table 5 – Year-on-year percentage change in electricity distributed in South Africa.....	5
Table 6 – Seasonally adjusted volume of electricity distributed in South Africa .....	5
Table 7 – Volume of electricity by category (gigawatt-hours).....	6
Table 8 – Year-to-date volume of electricity by category: year-on-year percentage change and difference.....	6
Table 9 – Volume of electricity delivered to provinces (gigawatt-hours) .....	6
<b>Survey information</b> .....	<b>7</b>
<b>Technical notes</b> .....	<b>8</b>
<b>Glossary</b> .....	<b>9</b>
<b>Technical enquiries</b> .....	<b>9</b>
<b>General information</b> .....	<b>10</b>

## Electricity generated (produced) in South Africa: results for May 2016

**Table A – Key growth rates in the volume of electricity generated**

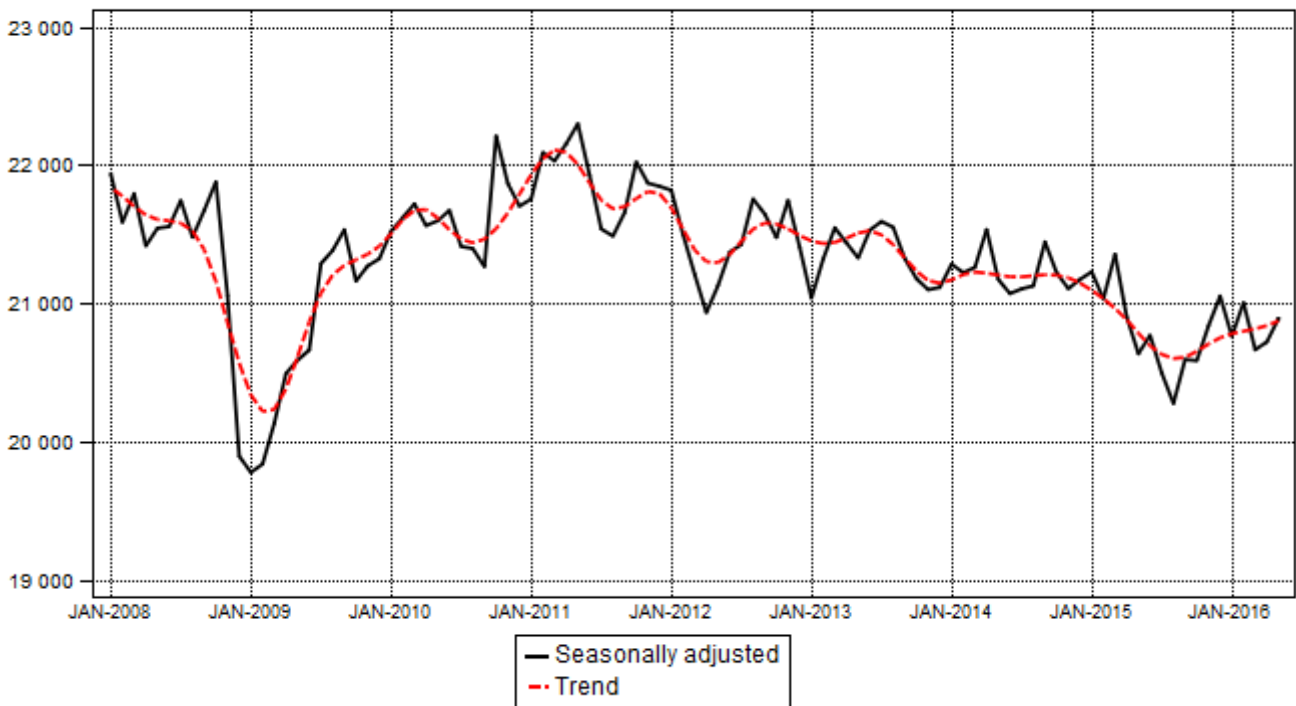
	Dec-15	Jan-16	Feb-16	Mar-16	Apr-16	May-16
Year-on-year % change, unadjusted	-0,3	-2,2	2,8	-4,3	0,8	1,0
Month-on-month % change, seasonally adjusted	1,0	-1,3	1,1	-1,6	0,3	0,8
3-month % change, seasonally adjusted <sup>1</sup>	1,8	1,9	1,3	-0,1	-0,4	-0,9

<sup>1</sup> Percentage change between the previous 3 months and the 3 months ending in the month indicated.

Electricity generation (production) increased by 1,0% year-on-year in May 2016. Seasonally adjusted electricity generation increased by 0,8% in May 2016 compared with April 2016. This followed month-on-month changes of 0,3% in April 2016 and -1,6% in March 2016. Seasonally adjusted electricity generation decreased by 0,9% in the three months ended May 2016 compared with the previous three months.

**Figure 1 – Electricity generated in South Africa**

Gigawatt-hours



## Electricity distributed (consumed) in South Africa: results for May 2016

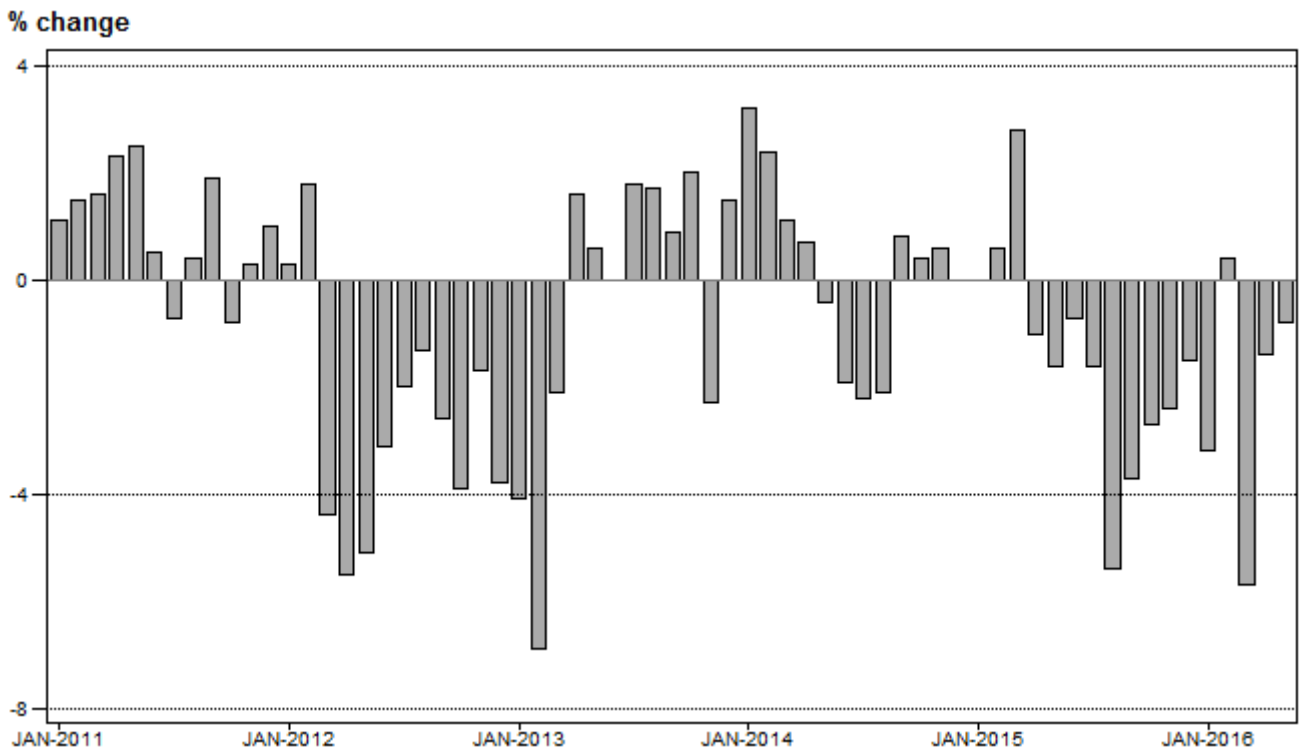
**Table B – Key growth rates in the volume of electricity distributed**

	Dec-15	Jan-16	Feb-16	Mar-16	Apr-16	May-16
Year-on-year % change, unadjusted	-1,5	-3,2	0,4	-5,7	-1,4	-0,8
Month-on-month % change, seasonally adjusted	0,3	-1,2	0,2	-0,4	-0,3	0,6
3-month % change, seasonally adjusted <sup>1</sup>	1,7	1,4	0,0	-0,9	-0,9	-0,6

<sup>1</sup> Percentage change between the previous 3 months and the 3 months ending in the month indicated.

Electricity distribution (consumption) decreased by 0,8% year-on-year in May 2016. Seasonally adjusted electricity distribution increased by 0,6% month-on-month in May 2016, following month-on-month changes of -0,3% in April 2016 and -0,4% in March 2016. Seasonally adjusted electricity distribution decreased by 0,6% in the three months ended May 2016 compared with the previous three months.

**Figure 2 – Electricity distributed in South Africa: year-on-year percentage change**



**PJ Lehohla**  
**Statistician-General**

**Tables**

**Table 1 – Index of the volume of electricity generated (Base: 2010=100)**

Month	2010	2011	2012	2013	2014	2015	2016 <sup>1</sup>
Jan	97,6	98,1	99,2	96,2	97,7	97,4	95,3
Feb	91,1	93,3	93,8	90,5	90,3	89,6	92,1
Mar	101,3	103,0	99,3	99,6	98,8	99,8	95,5
Apr	96,2	98,9	92,9	96,7	96,0	92,8	93,5
May	102,3	105,9	100,3	101,2	100,1	97,6	98,6
Jun	103,8	104,6	102,2	102,2	99,8	98,7	
Jul	106,6	106,8	105,7	106,4	104,1	101,3	
Aug	103,2	103,7	105,4	104,2	102,2	97,2	
Sep	97,0	99,4	98,7	97,3	98,4	94,8	
Oct	104,6	103,1	101,1	99,9	100,3	97,1	
Nov	100,0	100,1	99,5	96,3	95,6	94,2	
Dec	96,3	96,7	94,0	93,4	93,8	93,5	
<b>Total</b>	<b>100,0</b>	<b>101,1</b>	<b>99,3</b>	<b>98,7</b>	<b>98,1</b>	<b>96,2</b>	

<sup>1</sup> Latest month is preliminary.

**Table 2 – Year-on-year percentage change in the volume of electricity generated**

Month	2011	2012	2013	2014	2015	2016	2016 year-to-date
Jan	0,5	1,1	-3,0	1,6	-0,3	-2,2	-2,2
Feb	2,4	0,5	-3,5	-0,2	-0,8	2,8	0,2
Mar	1,7	-3,6	0,3	-0,8	1,0	-4,3	-1,4
Apr	2,8	-6,1	4,1	-0,7	-3,3	0,8	-0,8
May	3,5	-5,3	0,9	-1,1	-2,5	1,0	-0,5
Jun	0,8	-2,3	0,0	-2,3	-1,1		
Jul	0,2	-1,0	0,7	-2,2	-2,7		
Aug	0,5	1,6	-1,1	-1,9	-4,9		
Sep	2,5	-0,7	-1,4	1,1	-3,7		
Oct	-1,4	-1,9	-1,2	0,4	-3,2		
Nov	0,1	-0,6	-3,2	-0,7	-1,5		
Dec	0,4	-2,8	-0,6	0,4	-0,3		
<b>Total</b>	<b>1,1</b>	<b>-1,8</b>	<b>-0,6</b>	<b>-0,6</b>	<b>-1,9</b>		

**Table 3 – Seasonally adjusted index of the volume of electricity generated**

Month	Base: 2010=100				Month-on-month % change			
	2013	2014	2015	2016	2013	2014	2015	2016
Jan	97,3	98,4	98,1	96,0	-1,7	0,8	0,2	-1,3
Feb	98,6	98,1	97,2	97,1	1,3	-0,3	-0,9	1,1
Mar	99,6	98,3	98,7	95,5	1,0	0,2	1,5	-1,6
Apr	99,1	99,6	96,6	95,8	-0,5	1,3	-2,1	0,3
May	98,6	97,9	95,4	96,6	-0,5	-1,7	-1,2	0,8
Jun	99,5	97,4	96,0		0,9	-0,5	0,6	
Jul	99,8	97,6	94,8		0,3	0,2	-1,3	
Aug	99,6	97,7	93,7		-0,2	0,1	-1,2	
Sep	98,6	99,1	95,2		-1,0	1,4	1,6	
Oct	97,9	98,1	95,2		-0,7	-1,0	0,0	
Nov	97,5	97,6	96,3		-0,4	-0,5	1,2	
Dec	97,6	97,9	97,3		0,1	0,3	1,0	

**Table 4 – Volume of electricity distributed in South Africa (gigawatt-hours)**

Month	2011	2012	2013	2014	2015	2016 <sup>1</sup>
Jan	19 616	19 676	18 860	19 457	19 463	18 846
Feb	18 455	18 783	17 493	17 917	18 028	18 104
Mar	20 518	19 623	19 202	19 415	19 961	18 827
Apr	19 539	18 466	18 762	18 895	18 706	18 442
May	20 938	19 869	19 991	19 907	19 581	19 415
Jun	20 914	20 274	20 270	19 891	19 759	
Jul	21 162	20 743	21 119	20 661	20 324	
Aug	20 617	20 345	20 689	20 253	19 160	
Sep	19 619	19 100	19 271	19 428	18 707	
Oct	20 198	19 413	19 795	19 876	19 343	
Nov	19 763	19 426	18 984	19 103	18 637	
Dec	19 189	18 456	18 733	18 728	18 453	
<b>Total</b>	<b>240 528</b>	<b>234 174</b>	<b>233 169</b>	<b>233 531</b>	<b>230 122</b>	

<sup>1</sup> Latest month is preliminary.

**Table 5 – Year-on-year percentage change in electricity distributed in South Africa**

Month	2012	2013	2014	2015	2016	2016 year-to-date
Jan	0,3	-4,1	3,2	0,0	-3,2	-3,2
Feb	1,8	-6,9	2,4	0,6	0,4	-1,4
Mar	-4,4	-2,1	1,1	2,8	-5,7	-2,9
Apr	-5,5	1,6	0,7	-1,0	-1,4	-2,5
May	-5,1	0,6	-0,4	-1,6	-0,8	-2,2
Jun	-3,1	0,0	-1,9	-0,7		
Jul	-2,0	1,8	-2,2	-1,6		
Aug	-1,3	1,7	-2,1	-5,4		
Sep	-2,6	0,9	0,8	-3,7		
Oct	-3,9	2,0	0,4	-2,7		
Nov	-1,7	-2,3	0,6	-2,4		
Dec	-3,8	1,5	0,0	-1,5		
<b>Total</b>	<b>-2,6</b>	<b>-0,4</b>	<b>0,2</b>	<b>-1,5</b>		

**Table 6 – Seasonally adjusted volume of electricity distributed in South Africa**

Month	Gigawatt-hours				Month-on-month % change			
	2013	2014	2015	2016	2013	2014	2015	2016
Jan	18 964	19 504	19 530	18 939	-2,4	-0,3	0,1	-1,2
Feb	19 090	19 479	19 552	18 975	0,7	-0,1	0,1	0,2
Mar	19 332	19 393	19 828	18 901	1,3	-0,4	1,4	-0,4
Apr	19 209	19 594	19 437	18 852	-0,6	1,0	-2,0	-0,3
May	19 404	19 391	19 117	18 974	1,0	-1,0	-1,6	0,6
Jun	19 612	19 288	19 121		1,1	-0,5	0,0	
Jul	19 765	19 302	18 958		0,8	0,1	-0,9	
Aug	19 771	19 396	18 505		0,0	0,5	-2,4	
Sep	19 633	19 694	18 916		-0,7	1,5	2,2	
Oct	19 543	19 542	19 038		-0,5	-0,8	0,6	
Nov	19 289	19 575	19 117		-1,3	0,2	0,4	
Dec	19 564	19 508	19 176		1,4	-0,3	0,3	

**Table 7 – Volume of electricity by category (gigawatt-hours)**

	Jan-16	Feb-16	Mar-16	Apr-16	May-16 <sup>1</sup>	May-16 year-on-year % change
<b>Total - all producers</b>						
Generated	20 626	19 914	20 666	20 230	21 335	1,1
Inflow into South Africa	1 058	930	1 000	976	930	-22,0
Consumed in power stations and auxiliary systems	1 499	1 341	1 412	1 394	1 482	-4,8
Outflow from South Africa	1 339	1 398	1 427	1 371	1 367	17,7
Distributed in South Africa	18 846	18 104	18 827	18 442	19 415	-0,8
<b>Eskom</b>						
Generated	19 328	18 617	19 287	18 775	19 908	1,0
Inflow into South Africa	1 058	930	1 000	976	930	-22,0
Consumed in power stations and auxiliary systems	1 436	1 276	1 344	1 327	1 409	-4,9
Outflow from South Africa	1 339	1 398	1 427	1 371	1 367	17,7
Distributed in South Africa	17 611	16 872	17 515	17 054	18 062	-1,1

<sup>1</sup> Preliminary.

**Table 8 – Year-to-date volume of electricity by category: year-on-year percentage change and difference**

	Jan – May 2015 (GWh)	Jan – May 2016 (GWh)	% change between Jan – May 2015 and Jan – May 2016	Difference between Jan – May 2015 and Jan – May 2016 (GWh)
<b>Total - all producers</b>				
Generated	103 223	102 771	-0,4	-452
Inflow into South Africa	5 617	4 894	-12,9	-723
Consumed in power stations and auxiliary systems	7 402	7 118	-3,8	-284
Outflow from South Africa	5 701	6 902	21,1	1 201
Distributed in South Africa	95 739	93 645	-2,2	-2 094
<b>Eskom</b>				
Generated	96 670	95 915	-0,8	-755
Inflow into South Africa	5 617	4 894	-12,9	-723
Consumed in power stations and auxiliary systems	7 059	6 792	-3,8	-267
Outflow from South Africa	5 701	6 902	21,1	1 201
Distributed in South Africa	89 529	87 114	-2,7	-2 415

**Table 9 – Volume of electricity delivered to provinces (gigawatt-hours)**

Province	Jan-16	Feb-16	Mar-16	Apr-16	May-16 <sup>1</sup>	May-16 year-on-year % change
Western Cape	1 960	1 872	1 940	1 830	1 897	-0,2
Eastern Cape	716	680	690	661	677	-3,8
Northern Cape	467	463	444	411	392	-13,3
Free State	875	829	821	813	886	2,8
KwaZulu-Natal	3 428	3 259	3 459	3 379	3 489	-1,9
North West	2 407	2 343	2 416	2 342	2 424	-2,5
Gauteng	4 362	4 331	4 552	4 531	5 120	5,1
Mpumalanga	2 903	2 716	2 866	2 894	2 971	-1,4
Limpopo	1 193	1 122	1 173	1 155	1 168	-4,3
<b>Total</b>	<b>18 311</b>	<b>17 615</b>	<b>18 362</b>	<b>18 015</b>	<b>19 024</b>	<b>-0,2</b>

<sup>1</sup> Preliminary.

## Survey information

- Introduction**
- 1 Statistics South Africa (Stats SA) conducts a monthly survey covering electricity undertakings and establishments (branches) in the electricity industry. This statistical release contains monthly information regarding the volume of electricity units:
    - generated and distributed in South Africa;
    - flowing into and out from South Africa as measured by the metering systems at the South African borders; and
    - delivered to provinces.
 Both unadjusted and seasonally adjusted figures are published.
  - 2 In accordance with international practice, the indices are usually re-based every five years to a new base year. The current base period of the index is 2010.
  - 3 Some information for the current month may have been estimated due to late submission by respondents. These estimates will be revised in the next statistical release(s) as soon as actual information is available.
- Purpose of the survey**
- 4 The results of the monthly electricity survey are used to compile estimates of the gross domestic product (GDP) and its components, which are used in monitoring the state of the economy and formulation of economic policy.
- Scope of the survey**
- 5 This survey covers electricity undertakings and establishments conducting activities concerned with the generation and/or distribution of electricity (excluding the distribution of purchased electric energy). It includes electrical power installations, which, as subsidiary divisions of undertakings, produce electricity for regular use by these undertakings.
- Classification**
- 6 The 1993 edition of the *Standard Industrial Classification of all Economic Activities* (SIC), Fifth Edition, Report No. 09-90-02, was used to classify the statistical units in the survey. The SIC is based on the 1990 *International Standard Industrial Classification of all Economic Activities* (ISIC) with suitable adaptations for local conditions. Each statistical unit is classified to an industry which reflects the predominant activity of the electricity undertaking or establishment.
- Collection rate**
- 7 The collection rate for the survey on electricity generated and available for distribution for May 2016 was 100%. The collection rate for April 2016 was 100%.
- Statistical unit**
- 8 The statistical unit for the collection of information is the electricity undertaking or establishment. The electricity undertaking or establishment is the smallest economic unit that functions as a separate entity (see point 5).
- Revised figures**
- 9 Normally revised figures are due to:
    - late submission of data to Stats SA; and
    - revisions or corrections by respondents to previous reported data.
 Data are edited at enterprise level.
- Rounding-off of figures**
- 10 Where figures have been rounded off, discrepancies may occur between sums of the component items and the totals.
- Historical data**
- 11 Historical electricity data are available on the Stats SA webpage. Click on the following link ([Time series data](#)) to access the data electronically
- Past publications**
- 12 Past electricity releases are available on the Stats SA webpage. Click on the following link ([Past publications](#)) to access the releases electronically.



**Technical notes**

- |   |   |
|---|---|
| <b>Survey methodology and design</b>          | <p>1 All statistical units are stratified by type of economic activity according to the <i>Standard Industrial Classification of all Economic Activities</i> (SIC) and measure of size, where measure of size is the volume of electricity generated by the electricity undertaking or establishment. All large undertakings or establishments (size group one) are completely enumerated. A sample is drawn from medium and small size undertakings and establishments by systematically selecting undertakings or establishments within each size category. An electricity undertaking or establishment with a total generating capacity of less than 500 kilowatts is excluded from the sample.</p> <p>2 The survey is conducted by electronic filing, email, fax and telephone. Information is collected from a sample of 24 electricity undertakings or establishments. As from September 2013, Eskom supplied additional data for independent power producers (IPPs) that were not in the original sample of 24 establishments.</p>                               |
| <b>Monthly index of electricity generated</b> | <p>3 The calculation of the monthly index of electricity generated is based on the volume of electricity units produced.</p>  |
| <b>Benchmarking</b>                           | <p>4 The index of the volume of electricity generated should provide an accurate reflection of the trend of activities of the relevant industry. The level of activities, as measured by the monthly electricity survey, is based on information received from a sample of electricity undertakings and establishments. These levels are weighted according to the original sample and designed to represent the population of electricity undertakings and establishments.</p> <p>The results of the 1995 Census of electricity, gas and steam served as a benchmark to verify or adjust the level of the monthly index of the volume of electricity generated collected through the monthly survey. The level adjustments were done on the volume index for July of the relevant census year (the 1995 census year covered the period 1 January to 31 December 1995 and therefore, the benchmarking was done using the index of July 1995 as reference point).</p>  |
| <b>Seasonal adjustment</b>                    | <p>5 Seasonally adjusted estimates of all items are generated each month, using the X-12-ARIMA Seasonal Adjustment Program developed by US Bureau of the Census Economic Research and Analyses Division. Seasonal adjustment is a means of removing the estimated effects of normal seasonal variation from the series so that the effects of other influences on the series can be more clearly recognized. Seasonal adjustment does not aim to remove irregular or non-seasonal influences, which may be present in any particular month. Influences that are volatile or unsystematic can still make it difficult to interpret the movement of the series even after adjustment for seasonal variations. This means the month-to-month movements of seasonally adjusted estimates may not be reliable indicators of trend behaviour. The X12-ARIMA procedure for electricity generated and available for distribution is described in more detail on the Stats SA website at <a href="#">Click to download Electricity seasonal adjustment November 2015.pdf</a></p> |
| <b>Trend cycle</b>                            | <p>6 The trend is the long-term pattern or movement of a time series. The X-12-ARIMA Seasonal Adjustment Program is used for smoothing seasonally adjusted estimates to estimate the underlying trend cycle.</p>  |
| <b>Month-on-month percentage change</b>       | <p>7 The month-on-month percentage change in a variable for any given month is the change between that month and the previous month, expressed as a percentage of the latter.</p>   |
| <b>Year-on-year percentage change</b>         | <p>8 The year-on-year percentage change in a variable for any given period is the change between that period and the corresponding period of the previous year, expressed as a percentage of the latter.</p>  |

## Glossary

<b>Electricity undertaking</b>	An undertaking concerned with the generation and distribution of electricity, including electrical power installations, which, as subsidiary divisions of undertakings, produce electricity for regular use by these undertakings.	
<b>Index of the volume of electricity generated</b>	A statistical measure of the change in the volume of electricity generated in a given period and the volume of electricity generated in the base period. The base period is 2010. The production in the base period is set at 100.	
<b>Industry</b>	An industry is made up of enterprises engaged in the same or similar kinds of economic activity. Industries are defined in the System of National Accounts (SNA) in the same way as in the <i>Standard Industrial Classification of all Economic Activities</i> (SIC), Fifth Edition, Report No. 09-90-02 of January 1993.	
<b>Inflow into SA</b>	Electricity flowing into South Africa as measured by the metering systems at the South African borders.	
<b>Outflow from SA</b>	Electricity flowing from South Africa as measured by the metering systems at the South African borders.	
<b>Unit of electricity</b>	One gigawatt-hour of electricity is equal to one million kilowatt-hours. A kilowatt-hour is the basic unit of electrical energy equal to one kilowatt of power supplied to or taken from an electric circuit steadily for one hour. One kilowatt-hour equals one thousand watt-hours.	
<b>Symbols and abbreviations</b>	GDP	Gross domestic product
	GWh	Gigawatt-hour
	ISIC	International Standard Industrial Classification
	SIC	Standard Industrial Classification of all Economic Activities
	SA	South Africa
	Stats SA	Statistics South Africa
	*	Revised figures

## Technical enquiries

**Tsholofelo Ditinti** Email: [tsholofelod@statssa.gov.za](mailto:tsholofelod@statssa.gov.za)

**Nicolai Claassen** Telephone number: (012) 310 8007  
Email: [nicolaic@statssa.gov.za](mailto:nicolaic@statssa.gov.za)

---

## General information

Stats SA publishes approximately 300 different statistical releases each year. It is not economically viable to produce them in more than one of South Africa's eleven official languages. Since the releases are used extensively, not only locally but also by international economic and social-scientific communities, Stats SA releases are published in English only.

Stats SA has copyright on this publication. Users may apply the information as they wish, provided that they acknowledge Stats SA as the source of the basic data wherever they process, apply, utilise, publish or distribute the data; and also that they specify that the relevant application and analysis (where applicable) result from their own processing of the data.

## Stats SA products

A complete set of Stats SA publications is available at the Stats SA Library and the following libraries:

National Library of South Africa, Pretoria Division  
National Library of South Africa, Cape Town Division  
Natal Society Library, Pietermaritzburg  
Library of Parliament, Cape Town  
Bloemfontein Public Library  
Johannesburg Public Library  
Eastern Cape Library Services, King William's Town  
Central Regional Library, Polokwane  
Central Reference Library, Mbombela  
Central Reference Collection, Kimberley  
Central Reference Library, Mmabatho

Stats SA also provides a subscription service.

## Electronic services

A large range of data is available via online services. For more detail about our electronic services, contact Stats SA's user information service at (012) 310 8600.

You can also visit us on the internet at: [www.statssa.gov.za](http://www.statssa.gov.za)

## General enquiries

User information services	Telephone number: (012) 310 8600 Email address: <a href="mailto:info@statssa.gov.za">info@statssa.gov.za</a>
Orders/subscription services	Telephone number: (012) 310 8044 Email address: <a href="mailto:magdaj@statssa.gov.za">magdaj@statssa.gov.za</a>
Postal address	Private Bag X44, Pretoria, 0001

*Produced by Stats SA*