



The South Africa I know, the home I understand

Statistical release

P4141

Electricity generated and available for distribution (Preliminary)

March 2015

Embargoed until:
7 May 2015
13:00

Enquiries:

Nicolai Claassen
Tel: (012) 310 8249

Forthcoming issue:

April 2015

Expected release date:

4 June 2015

Contents

Electricity generated (produced): results for March 2015	2
Table A – Key growth rates in the volume of electricity generated	2
Figure 1 – Electricity generated in South Africa	2
Electricity distributed (consumed) in South Africa: results for March 2015	3
Table B – Key growth rates in the volume of electricity distributed in South Africa	3
Figure 2 – Electricity distributed in South Africa: year-on-year percentage change	3
Tables	4
Table 1 – Index of the volume of electricity generated (Base: 2010=100)	4
Table 2 – Year-on-year percentage change in the volume of electricity generated	4
Table 3 – Seasonally adjusted index of the volume of electricity generated.....	4
Table 4 – Volume of electricity distributed in South Africa (gigawatt-hours)	5
Table 5 – Year-on-year percentage change in electricity distributed in South Africa.....	5
Table 6 – Seasonally adjusted volume of electricity distributed in South Africa	5
Table 7 – Volume of electricity by category (gigawatt-hours).....	6
Table 8 – Year-to-date volume of electricity by category: year-on-year percentage change and difference.....	6
Table 9 – Volume of electricity delivered by Eskom to provinces (gigawatt-hours)	6
Survey information	7
Technical notes	8
Glossary	9
Technical enquiries	9
General information	10

Electricity generated (produced): results for March 2015

Table A – Key growth rates in the volume of electricity generated

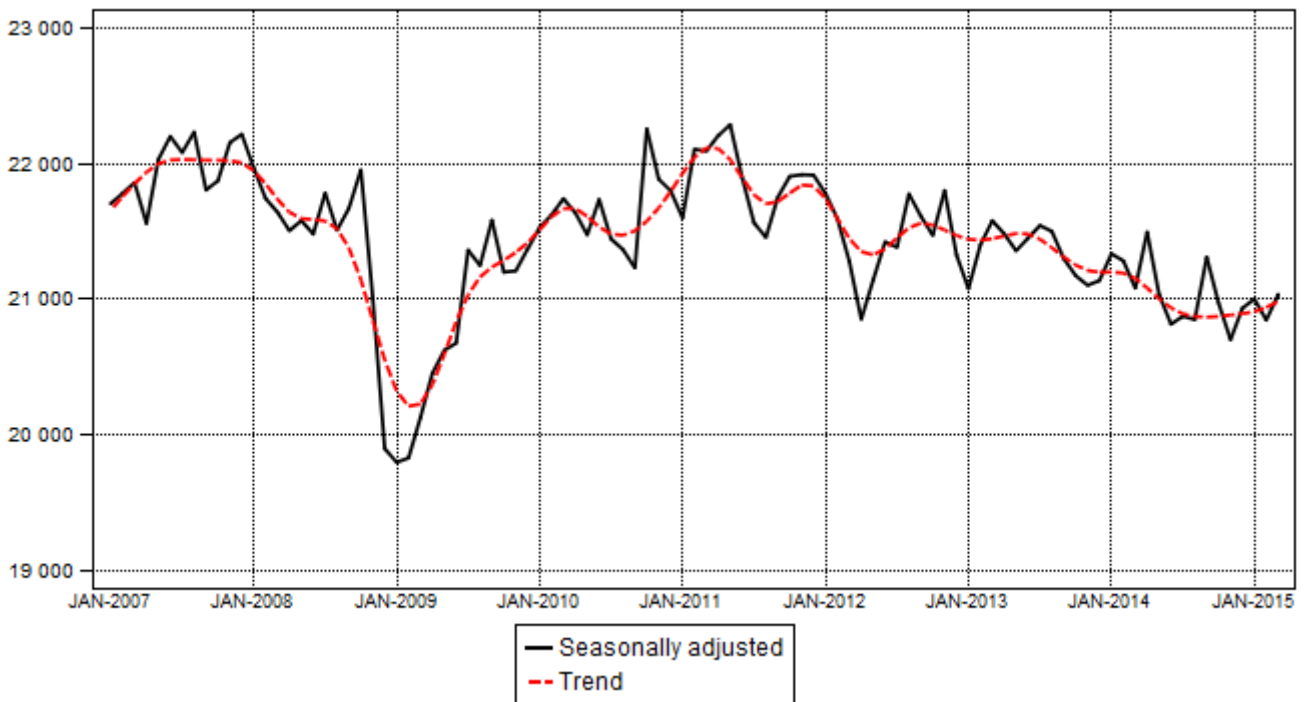
	Oct-14	Nov-14	Dec-14	Jan-15	Feb-15	Mar-15
Year-on-year % change, unadjusted	-1,0	-2,0	-1,0	-1,5	-2,1	-0,2
Month-on-month % change, seasonally adjusted	-1,6	-1,2	1,0	0,3	-0,7	0,9
3-month % change, seasonally adjusted ¹	0,6	0,7	-0,7	-0,8	-0,4	0,4

¹ Percentage change between the previous 3 months and the 3 months ending in the month indicated.

Electricity generation (production) decreased by 0,2% year-on-year in March 2015. Seasonally adjusted electricity generation increased by 0,9% in March 2015 compared with February 2015. This followed month-on-month changes of -0,7% in February 2015 and 0,3% in January 2015. Seasonally adjusted electricity generation increased by 0,4% in the first quarter of 2015 compared with the fourth quarter of 2014.

Figure 1 – Electricity generated in South Africa

Gigawatt-hours



Electricity distributed (consumed) in South Africa: results for March 2015

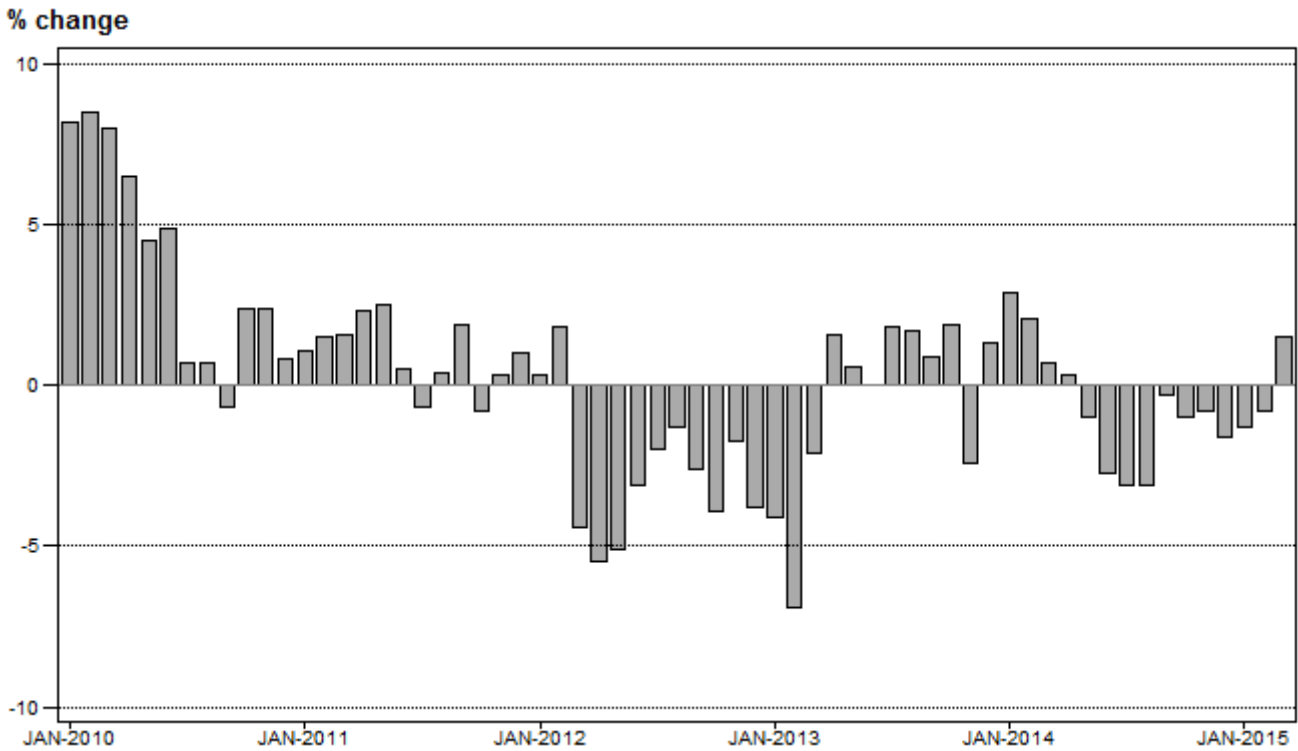
Table B – Key growth rates in the volume of electricity distributed in South Africa

	Oct-14	Nov-14	Dec-14	Jan-15	Feb-15	Mar-15
Year-on-year % change, unadjusted	-1,0	-0,8	-1,6	-1,3	-0,8	1,5
Month-on-month % change, seasonally adjusted	-0,9	-1,0	0,5	0,2	-0,2	1,2
3-month % change, seasonally adjusted ¹	0,7	1,4	0,1	-0,4	-0,4	0,5

¹ Percentage change between the previous 3 months and the 3 months ending in the month indicated.

Electricity distribution (consumption) increased by 1,5% year-on-year in March 2015. Seasonally adjusted electricity distribution increased by 1,2% month-on-month in March 2015, following month-on-month changes of -0,2% in February 2015 and 0,2% in January 2015. Seasonally adjusted electricity distribution increased by 0,5% in the first quarter of 2015 compared with the fourth quarter of 2014.

Figure 2 – Electricity distributed in South Africa: year-on-year percentage change



PJ Lehohla
Statistician-General

Tables

Table 1 – Index of the volume of electricity generated (Base: 2010=100)

Month	2009	2010	2011	2012	2013	2014	2015 ¹
Jan	89,7	97,6	98,1	99,2	96,2	97,5	96,0
Feb	83,5	91,1	93,3	93,8	90,5	90,0	88,1
Mar	93,7	101,3	103,0	99,3	99,6	98,4	98,2
Apr	90,7	96,2	98,9	92,9	96,7	95,7	
May	98,6	102,3	105,9	100,3	101,2	99,6	
Jun	98,8	103,8	104,6	102,2	102,2	99,1	
Jul	106,4	106,6	106,8	105,7	106,4	103,2	
Aug	102,7	103,2	103,7	105,4	104,2	101,2	
Sep	98,5	97,0	99,4	98,7	97,3	97,4	
Oct	99,6	104,6	103,1	101,1	99,9	98,9	
Nov	96,8	100,0	100,1	99,5	96,2	94,3	
Dec	94,6	96,3	96,7	94,0	93,2	92,3	
Total	96,1	100,0	101,1	99,3	98,6	97,3	

¹ Latest month is preliminary.

Table 2 – Year-on-year percentage change in the volume of electricity generated

Month	2010	2011	2012	2013	2014	2015	2015 year-to-date
Jan	8,8	0,5	1,1	-3,0	1,4	-1,5	-1,5
Feb	9,1	2,4	0,5	-3,5	-0,6	-2,1	-1,8
Mar	8,1	1,7	-3,6	0,3	-1,2	-0,2	-1,2
Apr	6,1	2,8	-6,1	4,1	-1,0		
May	3,8	3,5	-5,3	0,9	-1,6		
Jun	5,1	0,8	-2,3	0,0	-3,0		
Jul	0,2	0,2	-1,0	0,7	-3,0		
Aug	0,5	0,5	1,6	-1,1	-2,9		
Sep	-1,5	2,5	-0,7	-1,4	0,1		
Oct	5,0	-1,4	-1,9	-1,2	-1,0		
Nov	3,3	0,1	-0,6	-3,3	-2,0		
Dec	1,8	0,4	-2,8	-0,9	-1,0		
Total	4,0	1,1	-1,8	-0,7	-1,4		

Table 3 – Seasonally adjusted index of the volume of electricity generated

Month	Base: 2010=100				Month-on-month % change			
	2012	2013	2014	2015	2012	2013	2014	2015
Jan	100,6	97,4	98,6	97,0	-0,7	-1,1	0,9	0,3
Feb	99,8	98,9	98,3	96,3	-0,8	1,5	-0,3	-0,7
Mar	98,3	99,7	97,4	97,2	-1,5	0,8	-0,9	0,9
Apr	96,4	99,3	99,3		-1,9	-0,4	2,0	
May	97,7	98,7	97,2		1,3	-0,6	-2,1	
Jun	99,0	99,1	96,2		1,3	0,4	-1,0	
Jul	98,8	99,5	96,5		-0,2	0,4	0,3	
Aug	100,6	99,3	96,3		1,8	-0,2	-0,2	
Sep	99,9	98,4	98,5		-0,7	-0,9	2,3	
Oct	99,2	97,8	96,9		-0,7	-0,6	-1,6	
Nov	100,7	97,5	95,7		1,5	-0,3	-1,2	
Dec	98,5	97,7	96,7		-2,2	0,2	1,0	

Table 4 – Volume of electricity distributed in South Africa (gigawatt-hours)

Month	2010	2011	2012	2013	2014	2015 ¹
Jan	19 396	19 616	19 676	18 860	19 409	19 152
Feb	18 181	18 455	18 783	17 493	17 859	17 713
Mar	20 186	20 518	19 623	19 202	19 328	19 627
Apr	19 102	19 539	18 466	18 762	18 810	
May	20 435	20 938	19 869	19 991	19 794	
Jun	20 800	20 914	20 274	20 270	19 721	
Jul	21 307	21 162	20 743	21 119	20 454	
Aug	20 540	20 617	20 345	20 689	20 044	
Sep	19 256	19 619	19 100	19 269	19 217	
Oct	20 371	20 198	19 413	19 781	19 589	
Nov	19 702	19 763	19 426	18 968	18 814	
Dec	18 996	19 189	18 456	18 701	18 410	
Total	238 272	240 528	234 174	233 105	231 449	

¹ Latest month is preliminary.

Table 5 – Year-on-year percentage change in electricity distributed in South Africa

Month	2011	2012	2013	2014	2015	2015 year-to-date
Jan	1,1	0,3	-4,1	2,9	-1,3	-1,3
Feb	1,5	1,8	-6,9	2,1	-0,8	-1,1
Mar	1,6	-4,4	-2,1	0,7	1,5	-0,2
Apr	2,3	-5,5	1,6	0,3		
May	2,5	-5,1	0,6	-1,0		
Jun	0,5	-3,1	0,0	-2,7		
Jul	-0,7	-2,0	1,8	-3,1		
Aug	0,4	-1,3	1,7	-3,1		
Sep	1,9	-2,6	0,9	-0,3		
Oct	-0,8	-3,9	1,9	-1,0		
Nov	0,3	-1,7	-2,4	-0,8		
Dec	1,0	-3,8	1,3	-1,6		
Total	0,9	-2,6	-0,5	-0,7		

Table 6 – Seasonally adjusted volume of electricity distributed in South Africa

Month	Gigawatt-hours				Month-on-month % change			
	2012	2013	2014	2015	2012	2013	2014	2015
Jan	19 857	18 995	19 547	19 288	-1,2	-1,7	0,0	0,2
Feb	19 703	19 069	19 427	19 246	-0,8	0,4	-0,6	-0,2
Mar	19 472	19 297	19 176	19 468	-1,2	1,2	-1,3	1,2
Apr	19 242	19 348	19 652		-1,2	0,3	2,5	
May	19 341	19 482	19 303		0,5	0,7	-1,8	
Jun	19 524	19 557	19 066		0,9	0,4	-1,2	
Jul	19 361	19 748	19 119		-0,8	1,0	0,3	
Aug	19 344	19 672	19 043		-0,1	-0,4	-0,4	
Sep	19 392	19 569	19 514		0,2	-0,5	2,5	
Oct	19 250	19 568	19 342		-0,7	0,0	-0,9	
Nov	19 744	19 280	19 148		2,6	-1,5	-1,0	
Dec	19 327	19 553	19 240		-2,1	1,4	0,5	

Table 7 – Volume of electricity by category (gigawatt-hours)

	Nov-14	Dec-14	Jan-15	Feb-15	Mar-15 ¹	Mar-15 year-on-year % change
Total - all producers						
Generated	20 391	19 978	20 769	19 068	21 251	-0,2
Inflow into South Africa	1 120	1 029	1 057	1 061	1 163	36,2
Consumed in power stations and auxiliary systems	1 507	1 472	1 519	1 311	1 558	-2,7
Outflow from South Africa	1 191	1 126	1 156	1 106	1 228	0,7
Distributed in South Africa	18 814	18 410	19 152	17 713	19 627	1,5
Eskom						
Generated	19 416	18 939	19 755	18 187	20 313	0,1
Inflow into South Africa	1 120	1 029	1 057	1 061	1 163	36,2
Consumed in power stations and auxiliary systems	1 444	1 401	1 446	1 254	1 489	-2,4
Outflow from South Africa	1 191	1 126	1 156	1 106	1 228	0,7
Distributed in South Africa	17 902	17 441	18 211	16 888	18 759	1,9

¹ Preliminary.

Table 8 – Year-to-date volume of electricity by category: year-on-year percentage change and difference

	Jan – Mar 2014 (GWh)	Jan – Mar 2015 (GWh)	% change between Jan – Mar 2014 and Jan – Mar 2015	Difference between Jan – Mar 2014 and Jan – Mar 2015 (GWh)
Total - all producers				
Generated	61 852	61 088	-1,2	-764
Inflow into South Africa	2 747	3 281	19,4	534
Consumed in power stations and auxiliary systems	4 517	4 388	-2,9	-129
Outflow from South Africa	3 487	3 490	0,1	3
Distributed in South Africa	56 596	56 492	-0,2	-104
Eskom				
Generated	59 206	58 255	-1,6	-951
Inflow into South Africa	2 747	3 281	19,4	534
Consumed in power stations and auxiliary systems	4 312	4 189	-2,9	-123
Outflow from South Africa	3 487	3 490	0,1	3
Distributed in South Africa	54 153	53 858	-0,5	-295

Table 9 – Volume of electricity delivered by Eskom to provinces (gigawatt-hours)

Province	Nov-14	Dec-14	Jan-15	Feb-15	Mar-15 ¹	Mar-15 year-on-year % change
Western Cape	1 814	1 861	1 965	1 865	1 930	-1,9
Eastern Cape	677	708	670	605	721	-3,9
Northern Cape	370	421	395	343	415	13,7
Free State	609	615	640	587	685	5,5
KwaZulu-Natal	3 305	3 225	3 494	3 238	3 529	0,6
North West	2 050	1 988	2 045	1 914	2 055	4,1
Gauteng	4 806	4 382	4 478	4 301	4 868	2,5
Mpumalanga	2 800	2 679	2 811	2 618	2 867	0,9
Limpopo	973	972	978	883	960	-1,3
Total	17 404	16 851	17 476	16 354	18 030	1,4

¹ Preliminary.

Survey information

- | | |
|--------------------------------|--|
| Introduction | <p>1 Statistics South Africa (Stats SA) conducts a monthly survey covering electricity undertakings and establishments (branches) in the electricity industry. This statistical release contains monthly information regarding the volume of electricity units:</p> <ul style="list-style-type: none"> • generated and distributed in South Africa; • flowing into and out from South Africa as measured by the metering systems at the South African borders; and • delivered by Eskom to provinces. <p>Both unadjusted and seasonally adjusted figures are published.</p> <p>2 In accordance with international practice, the indices are usually re-based every five years to a new base year. The current base period of the index is 2010.</p> <p>3 Some information for the current month may have been estimated due to late submission by respondents. These estimates will be revised in the next statistical release(s) as soon as actual information is available.</p> |
| Purpose of the survey | <p>4 The results of the monthly electricity survey are used to compile estimates of the gross domestic product (GDP) and its components, which are used in monitoring the state of the economy and formulation of economic policy.</p> |
| Scope of the survey | <p>5 This survey covers electricity undertakings and establishments conducting activities concerned with the generation and/or distribution of electricity (excluding the distribution of purchased electric energy). It includes electrical power installations, which, as subsidiary divisions of undertakings, produce electricity for regular use by these undertakings.</p> |
| Classification | <p>6 The 1993 edition of the <i>Standard Industrial Classification of all Economic Activities</i> (SIC), Fifth Edition, Report No. 09-90-02, was used to classify the statistical units in the survey. The SIC is based on the 1990 <i>International Standard Industrial Classification of all Economic Activities</i> (ISIC) with suitable adaptations for local conditions. Each statistical unit is classified to an industry which reflects the predominant activity of the electricity undertaking or establishment.</p> |
| Collection rate | <p>7 The collection rate for the survey on electricity generated and available for distribution for March 2015 was 95,8%. The collection rate for February 2015 was 95,8%.</p> |
| Statistical unit | <p>8 The statistical unit for the collection of information is the electricity undertaking or establishment. The electricity undertaking or establishment is the smallest economic unit that functions as a separate entity (see point 5).</p> |
| Revised figures | <p>9 Normally revised figures are due to:</p> <ul style="list-style-type: none"> • late submission of data to Stats SA; and • revisions or corrections by respondents to previous reported data. <p>Data are edited at enterprise level.</p> |
| Related publications | <p>10 Users may also refer to the following publications available from Stats SA:</p> <ul style="list-style-type: none"> • <i>Bulletin of Statistics</i>; and • <i>South African Statistics</i>. |
| Rounding-off of figures | <p>11 Where figures have been rounded off, discrepancies may occur between sums of the component items and the totals.</p> |
| Historical data | <p>12 Historical electricity data are available on the Stats SA webpage. Click on the following link (Time series data) to access the data electronically</p> |
| Past publications | <p>13 Past electricity releases are available on the Stats SA webpage. Click on the following link (Past publications) to access the releases electronically.</p> |

Technical notes

- | | | |
|---|---|---|
| Survey methodology and design | 1 | All statistical units are stratified by type of economic activity according to the <i>Standard Industrial Classification of all Economic Activities (SIC)</i> and measure of size, where measure of size is the volume of electricity generated by the electricity undertaking or establishment. All large undertakings or establishments (size group one) are completely enumerated. A sample is drawn from medium and small size undertakings and establishments by systematically selecting undertakings or establishments within each size category. An electricity undertaking or establishment with a total generating capacity of less than 500 kilowatts is excluded from the sample. |
| | 2 | The survey is conducted by email, fax and telephone. Information is collected from a sample of 24 electricity undertakings or establishments. |
| Monthly index of electricity generated | 3 | The calculation of the monthly index of electricity generated is based on the volume of electricity units produced. |
| Benchmarking | 4 | <p>The index of the volume of electricity generated should provide an accurate reflection of the trend of activities of the relevant industry. The level of activities, as measured by the monthly electricity survey, is based on information received from a sample of electricity undertakings and establishments. These levels are weighted according to the original sample and designed to represent the population of electricity undertakings and establishments.</p> <p>The results of the 1995 Census of electricity, gas and steam served as a benchmark to verify or adjust the level of the monthly index of the volume of electricity generated collected through the monthly survey. The level adjustments were done on the volume index for July of the relevant census year (the 1995 census year covered the period 1 January to 31 December 1995 and therefore, the benchmarking was done using the index of July 1995 as reference point).</p> |
| Seasonal adjustment | 5 | <p>Seasonally adjusted estimates of all items are generated each month, using the X-12-ARIMA Seasonal Adjustment Program developed by US Bureau of the Census Economic Research and Analyses Division, 1968. Seasonal adjustment is a means of removing the estimated effects of normal seasonal variation from the series so that the effects of other influences on the series can be more clearly recognized. Seasonal adjustment does not aim to remove irregular or non-seasonal influences, which may be present in any particular month. Influences that are volatile or unsystematic can still make it difficult to interpret the movement of the series even after adjustment for seasonal variations. This means the month-to-month movements of seasonally adjusted estimates may not be reliable indicators of trend behaviour. The X12-ARIMA procedure for electricity generated and available for distribution is described in more detail on the Stats SA website at Click to download Electricity seasonal adjustment August 2014.pdf</p> |
| Trend cycle | 6 | The trend is the long-term pattern or movement of a time series. The X-12-ARIMA Seasonal Adjustment Program is used for smoothing seasonally adjusted estimates to estimate the underlying trend cycle. |
| Month-on-month percentage change | 7 | The month-on-month percentage change in a variable for any given month is the change between that month and the previous month, expressed as a percentage of the latter. |
| Year-on-year percentage change | 8 | The year-on-year percentage change in a variable for any given period is the change between that period and the corresponding period of the previous year, expressed as a percentage of the latter. |

Glossary

Electricity undertaking	An undertaking concerned with the generation and distribution of electricity, including electrical power installations, which, as subsidiary divisions of undertakings, produce electricity for regular use by these undertakings.	
Index of the volume of electricity generated	A statistical measure of the change in the volume of electricity generated in a given period and the volume of electricity generated in the base period. The base period is 2010. The production in the base period is set at 100.	
Industry	An industry is made up of enterprises engaged in the same or similar kinds of economic activity. Industries are defined in the System of National Accounts (SNA) in the same way as in the Standard Industrial Classification of all Economic Activities (SIC), Fifth Edition, Report No. 09-90-02 of January 1993.	
Inflow into SA	Electricity flowing into South Africa as measured by the metering systems at the South African borders.	
Outflow from SA	Electricity flowing from South Africa as measured by the metering systems at the South African borders.	
Unit of electricity	One gigawatt-hour of electricity is equal to one million kilowatt-hours. A kilowatt-hour is the basic unit of electrical energy equal to one kilowatt of power supplied to or taken from an electric circuit steadily for one hour. One kilowatt-hour equals one thousand watt-hours.	
Symbols and abbreviations	GDP	Gross domestic product
	GWh	Gigawatt-hour
	ISIC	International Standard Industrial Classification
	SIC	Standard Industrial Classification of all Economic Activities
	SA	South Africa
	Stats SA	Statistics South Africa
	*	Revised figures

Technical enquiries

Tsholofelo Ditinti Telephone number: (012) 310 2229
Email: tsholofelod@statssa.gov.za

Nicolai Claassen Telephone number: (012) 310 8249
Email: nicolaic@statssa.gov.za

General information

Stats SA publishes approximately 300 different statistical releases each year. It is not economically viable to produce them in more than one of South Africa's eleven official languages. Since the releases are used extensively, not only locally but also by international economic and social-scientific communities, Stats SA releases are published in English only.

Stats SA has copyright on this publication. Users may apply the information as they wish, provided that they acknowledge Stats SA as the source of the basic data wherever they process, apply, utilise, publish or distribute the data; and also that they specify that the relevant application and analysis (where applicable) result from their own processing of the data.

Stats SA products

A complete set of Stats SA publications is available at the Stats SA Library and the following libraries:

National Library of South Africa, Pretoria Division
National Library of South Africa, Cape Town Division
Natal Society Library, Pietermaritzburg
Library of Parliament, Cape Town
Bloemfontein Public Library
Johannesburg Public Library
Eastern Cape Library Services, King William's Town
Central Regional Library, Polokwane
Central Reference Library, Mbombela
Central Reference Collection, Kimberley
Central Reference Library, Mmabatho

Stats SA also provides a subscription service.

Electronic services

A large range of data is available via online services. For more detail about our electronic services, contact Stats SA's user information service at (012) 310 8600.

You can also visit us on the internet at: www.statssa.gov.za

General enquiries

User information services	Telephone number: (012) 310 8600 Email address: info@statssa.gov.za
Orders/subscription services	Telephone number: (012) 310 8044 Email address: magdaj@statssa.gov.za
Postal address	Private Bag X44, Pretoria, 0001

Produced by Stats SA