

# Statistical release

## P4141

# Electricity generated and available for distribution (Preliminary)

**March 2011**

**Embargoed until:  
5 May 2011  
13:00**

**Enquiries:**

User Information Services  
Tel: (012) 310 8600 / 4892 /8390

**Forthcoming issue:**

April 2011

**Expected release date:**

2 June 2011

## Contents

<b>Results for March 2011 .....</b>	<b>2</b>
Table A – Selected key figures regarding electricity generated and available for distribution .....	2
Table B – Comparison of the seasonally adjusted volume of electricity generated and available for distribution between the first quarter of 2011 and the previous quarter .....	3
Table C – Comparison of actual estimates between the first quarter of 2011 and the first quarter of 2010 .....	3
Figure 1 – Electricity produced and available for distribution in South Africa, seasonally adjusted and trend.....	3
<b>Tables.....</b>	<b>4</b>
Table 1 – Total volume of electricity available for distribution in South Africa: 2006 – 2011 .....	4
Table 2 – Annual percentage change in electricity available for distribution in South Africa: 2006 – 2011 .....	4
Table 3 – Seasonally adjusted total volume of electricity available for distribution in South Africa: 2006 – 2011 .....	4
Table 4 – Indices of the physical volume of electricity production: 2006 – 2011 .....	5
Table 5 – Annual percentage change in indices of the physical volume of electricity production: 2006 – 2011 .....	5
Table 6 – Seasonally adjusted indices of the physical volume of electricity production: 2006 – 2011 .....	5
Table 7 – Total volume of electricity imported: 2006 – 2011.....	6
Table 8 – Total volume of electricity exported: 2006 – 2011.....	6
Table 9a – Electricity produced and consumed in power stations, purchased and sold outside South Africa and available for distribution in South Africa (monthly figures) .....	7
Table 9b – Electricity produced and consumed in power stations, purchased and sold outside South Africa and available for distribution in South Africa (cumulative figures).....	7
Table 10 – Total volume of electricity delivered by Eskom to provinces for 2010 and 2011 .....	8
<b>Explanatory Notes.....</b>	<b>9</b>
<b>Glossary.....</b>	<b>11</b>
<b>General information .....</b>	<b>12</b>

## Results for March 2011

**Table A – Selected key figures regarding electricity generated and available for distribution**

Actual estimates	March 2011 1/	% change between March 2010 and March 2011	% change between January to March 2010 and January to March 2011
Electricity available for distribution (Gigawatt-hours)	20 512	1,6	1,4
Index of the physical volume of electricity production (2005=100)	109,2	1,7	1,6

1/ Preliminary.

Seasonally adjusted estimates	March 2011	% change between February and March 2011	% change between October to December 2010 and January to March 2011
Electricity available for distribution (Gigawatt-hours)	20 446	0,3	1,6
Index of the physical volume of electricity production (2005=100)	109,0	-0,5	1,5

### Consumption of electricity

The actual estimated volume of electricity consumed increased by 1,6% (326 Gigawatt-hours) in March 2011 compared with March 2010 (see Tables A, 2 and 9a). Electricity consumption for the first quarter of 2011 increased by 1,4% (820 Gigawatt-hours) compared with the first quarter of 2010 (see Tables A and C). Seasonally adjusted electricity consumption increased by 1,6% in the first quarter of 2011 compared with the fourth quarter of 2010 (see Tables A and B).

### Production of electricity

The actual estimated production of electricity increased by 1,7% (363 Gigawatt-hours) in March 2011 compared with March 2010 (see Tables A, 5 and 9a). The estimated production of electricity for the first quarter of 2011 increased by 1,5% (963 Gigawatt-hours) compared with the first quarter of 2010 (see Tables A and C). Furthermore, seasonally adjusted electricity production increased by 1,5% in the first quarter of 2011 compared with the fourth quarter of 2010 (see Tables A and B).

### Electricity delivered by Eskom to the provinces

Electricity delivered to the provinces decreased by 0,3% (-150 Gigawatt-hours) for the first quarter of 2011 compared with the same period in 2010. Decreases were reported in Free State (-3,4% or -77 Gigawatt-hours), Gauteng (-3,3% or -474 Gigawatt-hours), Eastern Cape (-2,6% or -59 Gigawatt-hours) and KwaZulu-Natal (-1,4% or -146 Gigawatt-hours). A large increase was reported in Mpumalanga (5,3% or 448 Gigawatt-hours) (see Table 10).

### International trade in electricity

The volume of electricity purchased from outside South African borders decreased from 3 157 Gigawatt-hours in the first quarter of 2010 to 2 930 Gigawatt-hours in the first quarter of 2011, representing a decrease of 7,2% (-227 Gigawatt-hours). The volume of electricity sold to neighbouring countries decreased by 3,2% (-116 Gigawatt-hours) in the above-mentioned period (see Tables C and 9b).

**Table B – Comparison of the seasonally adjusted volume of electricity generated and available for distribution between the first quarter of 2011 and the previous quarter**

Gigawatt-hours	Seasonally adjusted quantity October to December 2010	Seasonally adjusted quantity January to March 2011	% change between October to December 2010 and January to March 2011	Quantity difference between October to December 2010 and January to March 2011
Electricity produced	65 628	66 600	1,5	972
Electricity available for distribution in South Africa	60 042	61 031	1,6	989

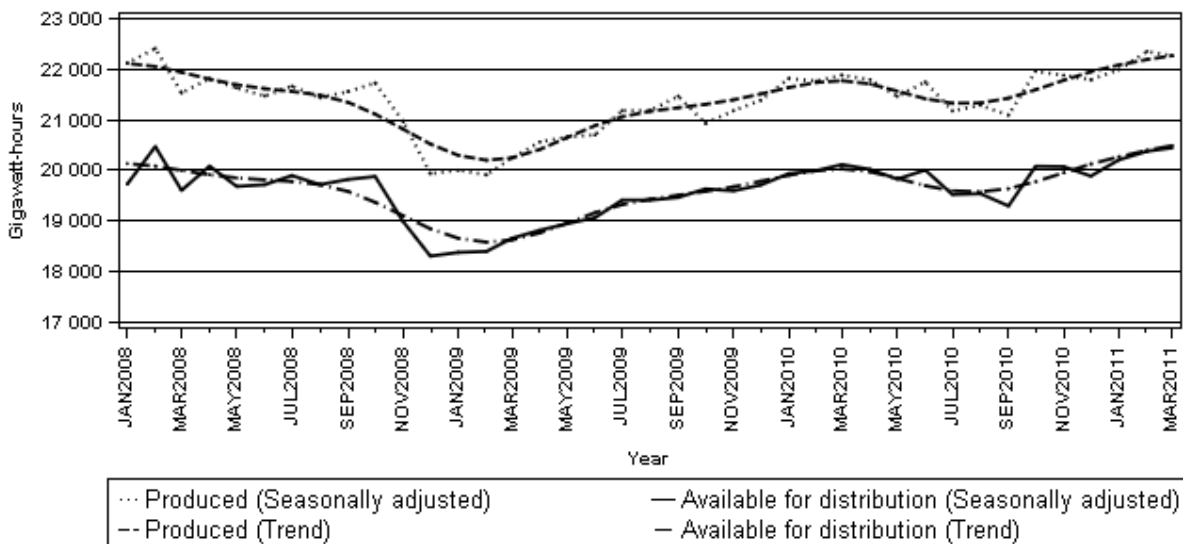
**Table C – Comparison of actual estimates between the first quarter of 2011 and the first quarter of 2010**

Gigawatt-hours	Actual volume January to March 2010	Actual volume January to March 2011	% change between January to March 2010 and January to March 2011	Quantity difference between January to March 2010 and January to March 2011
Electricity produced	62 732	63 695	1,5	963
Purchased outside South Africa (import) 1/	3 157	2 930	-7,2	-227
Consumed in power stations and auxiliary systems	4 529	4 561	0,7	32
Sold outside South Africa (export) 2/	3 597	3 481	-3,2	-116
Electricity available for distribution in South Africa	57 763	58 583	1,4	820

1/ Physical energy flowing into South Africa as measured by the metering systems at the South African borders.

2/ Physical energy flowing out of South Africa as measured by the metering systems at the South African borders.

**Figure 1 – Electricity produced and available for distribution in South Africa, seasonally adjusted and trend**



**PJ Lehohla**  
**Statistician-General**

**Tables**

**Table 1 – Total volume of electricity available for distribution in South Africa: 2006 – 2011**

Month	Gigawatt-hours					
	2006	2007	2008	2009	* 2010	2011
January	18 603	19 561	19 256	17 919	19 396	* 19 616
February	17 396	18 301	18 668	16 757	18 181	18 455
March	18 982	20 160	19 603	18 694	20 186	1/ 20 512
April	18 122	18 982	19 127	17 934	19 102	
May	20 312	20 901	20 365	19 548	20 435	
June	20 166	21 020	20 515	19 819	20 800	
July	20 632	21 780	21 610	21 151	21 307	
August	20 307	21 353	20 736	20 398	20 540	
September	18 987	19 732	19 725	19 382	19 256	
October	19 663	20 435	20 138	19 899	20 371	
November	19 244	19 785	18 640	19 248	19 702	
December	18 909	19 160	17 541	18 850	18 996	
<b>Year</b>	<b>231 323</b>	<b>241 170</b>	<b>235 924</b>	<b>229 599</b>	<b>238 272</b>	

1/ Preliminary.

\* Revised.

**Table 2 – Annual percentage change in electricity available for distribution in South Africa: 2006 – 2011**

Month	Percentage change 2/					
	2006	2007	2008	2009	2010	2011
January	2,5	5,1	-1,6	-6,9	8,2	1,1
February	1,3	5,2	2,0	-10,2	8,5	1,5
March	2,7	6,2	-2,8	-4,6	8,0	1,6
April	-0,1	4,7	0,8	-6,2	6,5	
May	5,7	2,9	-2,6	-4,0	4,5	
June	6,2	4,2	-2,4	-3,4	4,9	
July	5,0	5,6	-0,8	-2,1	0,7	
August	5,8	5,2	-2,9	-1,6	0,7	
September	3,3	3,9	0,0	-1,7	-0,7	
October	2,8	3,9	-1,5	-1,2	2,4	
November	3,9	2,8	-5,8	3,3	2,4	
December	3,7	1,3	-8,4	7,5	0,8	
<b>Year</b>	<b>3,6</b>	<b>4,3</b>	<b>-2,2</b>	<b>-2,7</b>	<b>3,8</b>	

2/ The annual percentage change is the change in the volume of electricity available for distribution of the relevant month of the current year compared with the corresponding month of the previous year expressed as a percentage.

**Table 3 – Seasonally adjusted total volume of electricity available for distribution in South Africa: 2006 – 2011**

Month	Gigawatt-hours						% change between current and previous month
	2006	2007	2008	2009	2010	2011	
January	18 973	19 974	19 728	18 379	19 935	20 208	1,6
February	18 930	19 959	20 471	18 398	19 997	20 377	0,8
March	18 966	20 161	19 605	18 657	20 114	20 446	0,3
April	19 061	19 944	20 084	18 817	20 020		
May	19 562	20 152	19 683	18 946	19 827		
June	19 413	20 224	19 717	19 065	20 006		
July	19 149	20 126	19 898	19 413	19 523		
August	19 370	20 331	19 718	19 412	19 540		
September	19 147	19 857	19 821	19 465	19 296		
October	19 445	20 204	19 879	19 634	20 081		
November	19 556	20 127	18 987	19 596	20 074		
December	19 683	19 996	18 306	19 710	19 887		

**Table 4 – Indices of the physical volume of electricity production: 2006 – 2011**

Month	Base : 2005=100					
	2006	2007	2008	2009	2010	2011
January	99,8	103,9	105,3	95,0	103,4	104,0
February	94,0	97,2	99,7	88,5	96,5	98,9
March	103,3	107,8	105,6	99,3	107,4	1/ 109,2
April	98,0	100,9	102,0	96,1	102,0	
May	108,1	111,9	109,6	104,5	108,5	
June	107,3	112,5	108,8	104,8	110,1	
July	110,8	116,6	115,1	112,8	113,0	
August	109,1	114,1	110,3	108,8	109,4	
September	101,8	105,5	104,8	104,4	102,8	
October	107,2	109,1	109,4	105,6	110,8	
November	103,3	106,9	101,4	102,6	* 105,9	
December	100,9	104,6	93,6	100,3	* 102,1	
Year	<b>103,6</b>	<b>107,6</b>	<b>105,5</b>	<b>101,9</b>	<b>106,0</b>	

1/ Preliminary.

\* Revised.

**Table 5 – Annual percentage change in indices of the physical volume of electricity production: 2006 – 2011**

Month	Percentage change 2/					
	2006	2007	2008	2009	2010	2011
January	2,3	4,1	1,3	-9,8	8,8	0,6
February	2,5	3,4	2,6	-11,2	9,0	2,5
March	3,1	4,4	-2,0	-6,0	8,2	1,7
April	-0,1	3,0	1,1	-5,8	6,1	
May	5,1	3,5	-2,1	-4,7	3,8	
June	5,6	4,8	-3,3	-3,7	5,1	
July	5,0	5,2	-1,3	-2,0	0,2	
August	5,9	4,6	-3,3	-1,4	0,6	
September	2,7	3,6	-0,7	-0,4	-1,5	
October	4,6	1,8	0,3	-3,5	4,9	
November	3,9	3,5	-5,1	1,2	3,2	
December	2,7	3,7	-10,5	7,2	1,8	
Year	<b>3,7</b>	<b>3,8</b>	<b>-2,0</b>	<b>-3,4</b>	<b>4,0</b>	

2/ The annual percentage change is the change in the index of the physical volume of electricity production of the relevant month of the current year compared with the corresponding month of the previous year expressed as a percentage.

**Table 6 – Seasonally adjusted indices of the physical volume of electricity production: 2006 – 2011**

Month	Base : 2005=100						% change between current and previous month
	2006	2007	2008	2009	2010	2011	
January	102,3	106,7	108,3	98,0	106,8	107,7	0,9
February	102,9	106,6	109,7	97,5	106,6	109,5	1,7
March	103,1	107,6	105,5	99,1	107,2	109,0	-0,5
April	102,7	105,8	106,8	100,7	106,7		
May	104,2	108,0	105,9	101,2	105,1		
June	103,6	108,8	105,2	101,4	106,5		
July	102,7	107,8	106,1	103,7	103,7		
August	104,0	108,7	105,0	103,7	104,2		
September	102,7	106,4	105,6	105,1	103,3		
October	104,6	106,4	106,4	102,5	107,5		
November	104,7	108,2	102,7	103,7	107,2		
December	105,0	109,0	97,6	104,7	106,7		

**Table 7 – Total volume of electricity imported: 2006 – 2011 1/**

Month	Gigawatt-hours					
	2006	2007	2008	2009	2010	2011
January	872	1 088	638	1 102	1 122	1 088
February	646	942	885	999	995	730
March	581	973	802	1 064	1 040	2/ 1 112
April	587	1 055	844	906	931	
May	879	900	761	937	1 074	
June	881	880	1 002	1 088	1 019	
July	926	984	1 089	1 040	1 117	
August	930	1 045	1 076	1 072	1 109	
September	971	1 026	1 044	920	1 068	
October	682	1 040	645	1 115	770	
November	862	796	711	940	1 018	
December	965	619	1 075	1 112	930	
<b>Year</b>	<b>9 782</b>	<b>11 348</b>	<b>10 572</b>	<b>12 295</b>	<b>12 193</b>	

1/ Physical energy flowing into South Africa as measured by the metering systems at the South African borders.

2/ Preliminary.

**Table 8 – Total volume of electricity exported: 2006 – 2011 1/**

Month	Gigawatt-hours					
	2006	2007	2008	2009	* 2010	2011
January	1 056	1 134	1 280	1 096	1 217	1 133
February	1 050	1 060	1 101	979	1 128	1 069
March	1 129	1 231	1 136	1 100	1 252	2/ 1 279
April	1 017	1 132	998	1 086	1 170	
May	1 046	1 203	1 120	1 109	1 177	
June	1 102	1 256	1 162	1 175	1 132	
July	1 239	1 301	1 249	1 223	1 206	
August	1 262	1 252	1 220	1 235	1 275	
September	1 239	1 186	1 203	1 285	1 248	
October	1 311	1 252	1 258	1 288	1 338	
November	1 186	1 256	1 252	1 213	1 316	
December	1 129	1 233	1 189	1 263	1 209	
<b>Year</b>	<b>13 766</b>	<b>14 496</b>	<b>14 168</b>	<b>14 052</b>	<b>14 668</b>	

1/ Physical energy flowing out of South Africa as measured by the metering systems at the South African borders.

2/ Preliminary.

\* Revised.

**Table 9a – Electricity produced and consumed in power stations, purchased and sold outside South Africa and available for distribution in South Africa (monthly figures)**

		Gigawatt-hours				
		March 2010	February 2011	March 2011 1/	% change between March 2010 and March 2011	Difference between March 2010 and March 2011
<b>Total - All producers</b>	<b>Electricity produced</b>	21 917	20 182	22 280	1,7	363
	<b>Purchased outside South Africa (import) 2/</b>	1 040	730	1 112	6,9	72
	<b>Consumed in power stations and auxiliary systems</b>	1 519	1 388	1 601	5,4	82
	<b>Sold outside South Africa (export) 3/</b>	1 252	1 069	1 279	2,2	27
	<b>Electricity available for distribution in South Africa</b>	<b>20 186</b>	<b>18 455</b>	<b>20 512</b>	<b>1,6</b>	<b>326</b>
<b>ESKOM</b>	<b>Electricity produced</b>	21 298	19 316	21 379	0,4	81
	<b>Purchased outside South Africa (import) 2/</b>	1 040	730	1 112	6,9	72
	<b>Consumed in power stations and auxiliary systems</b>	1 453	1 326	1 537	5,8	84
	<b>Sold outside South Africa (export) 3/</b>	1 252	1 069	1 279	2,2	27
	<b>Electricity available for distribution in South Africa</b>	<b>19 633</b>	<b>17 651</b>	<b>19 674</b>	<b>0,2</b>	<b>41</b>

1/ Preliminary.

2/ Physical energy flowing into South Africa as measured by the metering systems at the South African borders.

3/ Physical energy flowing out of South Africa as measured by the metering systems at the South African borders.

**Table 9b – Electricity produced and consumed in power stations, purchased and sold outside South Africa and available for distribution in South Africa (cumulative figures)**

		Gigawatt-hours			
		January to March 2010	January to March 2011 1/	% change between January to March 2010 and January to March 2011	Difference between January to March 2010 and January to March 2011
<b>Total - All producers</b>	<b>Electricity produced</b>	62 732	63 695	1,5	963
	<b>Purchased outside South Africa (import) 2/</b>	3 157	2 930	-7,2	-227
	<b>Consumed in power stations and auxiliary systems</b>	4 529	4 561	0,7	32
	<b>Sold outside South Africa (export) 3/</b>	3 597	3 481	-3,2	-116
	<b>Electricity available for distribution in South Africa</b>	<b>57 763</b>	<b>58 583</b>	<b>1,4</b>	<b>820</b>
<b>ESKOM</b>	<b>Electricity produced</b>	60 990	61 132	0,2	142
	<b>Purchased outside South Africa (import) 2/</b>	3 157	2 930	-7,2	-227
	<b>Consumed in power stations and auxiliary systems</b>	4 345	4 352	0,2	7
	<b>Sold outside South Africa (export) 3/</b>	3 597	3 481	-3,2	-116
	<b>Electricity available for distribution in South Africa</b>	<b>56 206</b>	<b>56 228</b>	<b>0,0</b>	<b>22</b>

1/ Preliminary.

2/ Physical energy flowing into South Africa as measured by the metering systems at the South African borders.

3/ Physical energy flowing out of South Africa as measured by the metering systems at the South African borders.



**Table 10 – Total volume of electricity delivered by Eskom to provinces for 2010 and 2011 1/**

Period		Gigawatt-hours									Total South Africa
		Western Cape	Eastern Cape	Northern Cape	Free State	KwaZulu-Natal	North West	Gauteng	Mpumalanga	Limpopo	
2010	January	1 932	780	404	751	3 540	2 182	4 806	2 845	991	<b>18 231</b>
	February	1 842	719	383	706	3 281	2 029	4 592	2 658	917	<b>17 127</b>
	March	2 037	809	405	780	3 629	2 273	5 086	2 926	1 032	<b>18 977</b>
	April	1 873	750	362	735	3 432	2 106	4 929	2 813	983	<b>17 982</b>
	May	1 930	825	365	788	3 551	2 259	5 411	3 079	979	<b>19 187</b>
	June	1 946	797	378	814	3 527	2 175	5 784	3 011	991	<b>19 424</b>
	July	2 005	811	400	824	3 684	2 188	5 978	2 948	1 062	<b>19 900</b>
	August	2 004	899	392	779	3 508	2 208	5 416	2 797	1 038	<b>19 041</b>
	September	1 851	764	387	673	3 474	2 095	4 824	2 580	1 054	<b>17 702</b>
	October	1 911	802	419	708	3 577	2 272	4 969	2 907	1 088	<b>18 653</b>
	November	1 882	778	406	703	3 441	2 211	4 877	2 944	1 033	<b>18 275</b>
	December	1 909	730	418	694	3 371	2 066	4 575	2 945	1 044	<b>17 750</b>
	Year	<b>23 122</b>	<b>9 464</b>	<b>4 719</b>	<b>8 955</b>	<b>42 015</b>	<b>26 064</b>	<b>61 247</b>	<b>34 453</b>	<b>12 212</b>	<b>222 249</b>
	Year to date	<b>5 811</b>	<b>2 308</b>	<b>1 192</b>	<b>2 237</b>	<b>10 450</b>	<b>6 484</b>	<b>14 484</b>	<b>8 429</b>	<b>2 940</b>	<b>54 335</b>
2011	January	1 957	742	408	721	3 417	2 180	4 704	3 052	1 022	<b>18 203</b>
	February	1 881	734	372	665	3 256	2 025	4 351	2 808	937	<b>17 029</b>
	March 2/	2 031	773	417	774	3 631	2 292	4 955	3 017	1 063	<b>18 953</b>
	Year to date	<b>5 869</b>	<b>2 249</b>	<b>1 197</b>	<b>2 160</b>	<b>10 304</b>	<b>6 497</b>	<b>14 010</b>	<b>8 877</b>	<b>3 022</b>	<b>54 185</b>

1/ Wholesale energy as delivered by Eskom to the various provinces.

2/ Preliminary.

## Explanatory Notes

<b>Introduction</b>	1	Statistics South Africa (Stats SA) conducts a monthly sample survey of the electricity industry covering electricity undertakings and establishments (branches). This statistical release contains information regarding the volume of electricity units generated and available for distribution in South Africa, the volume of units purchased and sold outside South Africa and the volume of units distributed by Eskom by province on a monthly basis. Both actual and seasonally adjusted figures are published.
	2	This statistical release reflects indices of the physical volume of electricity production on the basis of 2005=100. In accordance with international practice, the indices have to be rebased every five years to a new base year.
	3	In order to improve timeliness of the publication, some information for the current month may have been estimated due to late submission by respondents. These estimates will be revised in the next statistical release(s) as soon as actual information is available.
<b>Purpose of the survey</b>	4	The results of the monthly electricity generated and available for distribution survey are used to compile estimates of the gross domestic product (GDP) and its components, which are used in monitoring the state of the economy and formulation of economic policy.
<b>Scope of the survey</b>	5	This survey covers electricity undertakings and establishments conducting activities concerned with the generation or transmission and distribution of electricity. It includes electrical power installations, which, as subsidiary divisions of undertakings, produce electricity for regular use by these undertakings.
<b>Classification</b>	6	The 1993 edition of the <i>Standard Industrial Classification of all Economic Activities (SIC)</i> , Fifth Edition, Report No. 09-90-02, was used to classify the statistical units in the survey. The SIC is based on the 1990 <i>International Standard Industrial Classification of all Economic Activities (ISIC)</i> with suitable adaptations for local conditions. Each statistical unit is classified to an industry, which reflects the predominant activity of the electricity undertaking or establishment.
<b>Response rate</b>	7	The response rate for the survey on electricity generated and available for distribution for March 2011 was 99%.
<b>Statistical unit</b>	8	The basic statistical unit for the collection of information is the electricity undertaking or establishment. The electricity undertaking or establishment is the smallest economic unit that functions as a separate entity. Each statistical unit is classified to an industry (see paragraph 5).
<b>Survey methodology and design</b>	9	All statistical units are stratified by type of economic activity according to the <i>Standard Industrial Classification of all Economic Activities (SIC)</i> and measure of size, where measure of size is the volume of electricity generated by the electricity undertaking or establishment. All large undertakings or establishments (size category one cases) are completely enumerated. A sample is drawn from medium and small size undertakings and establishments by systematically selecting undertakings or establishments within each size category. An electricity undertaking or establishment with a total generating capacity of less than 500 kilowatt is excluded from the sample.
	10	The survey is conducted by mail, email and telephone. Information is collected from a sample of 22 electricity undertakings or establishments.
<b>Monthly production indices</b>	11	The calculation of the monthly production indices is based on the volume of electricity units produced.

<b>Benchmarking</b>	<b>12</b>	The index of physical volume of electricity production should provide an accurate reflection of the trend of activities of the relevant industry. The level of activities, as measured by the monthly electricity generated and available for distribution survey, is based on information received from a sample of electricity undertakings and establishments. These levels are weighted according to the original sample and designed to represent the population of electricity undertakings and establishments. It is necessary to adjust the level of activities as measured by the monthly sample survey to the level of activities as measured periodically by the Census of electricity, gas and steam. This procedure, whereby the latest results of an economic census are used to compile more accurate level estimates for a certain year, is known as benchmarking.
	<b>13</b>	The results of the 1995 Census of electricity, gas and steam served as a benchmark to verify or adjust the level of the monthly physical volume of electricity production indices collected through the monthly sample survey. The level adjustments were done on the volume indices for August of the relevant census year (the 1995 census year covered the period 1 January 1995 to 31 December 1995 and therefore, the benchmarking was done using the index of August 1995 as reference point).
<b>Seasonal adjustment</b>	<b>14</b>	Seasonally adjusted estimates of all items are generated each month, using the X-11 Seasonal Adjustment Program developed by US Bureau of the Census Economic Research and Analyses Division, 1968. Seasonal adjustment is a means of removing the estimated effects of normal seasonal variation from the series so that the effects of other influences on the series can be more clearly recognized. Seasonal adjustment does not aim to remove irregular or non-seasonal influences, which may be present in any particular month. Influences that are volatile or unsystematic can still make it difficult to interpret the movement of the series even after adjustment for seasonal variations. This means the month-to-month movements of seasonally adjusted estimates may not be reliable indicators of trend behaviour.
<b>Trend cycle</b>	<b>15</b>	The trend is the long-term pattern or movement of a time series. The X-11 Seasonal Adjustment Program is used for smoothing seasonally adjusted estimates.
<b>Related publications</b>	<b>16</b>	Users may also wish to refer to the following publications which are available from Stats SA : <ul style="list-style-type: none"> <li>• <i>Bulletin of Statistics</i>; and</li> <li>• <i>SA Statistics</i>.</li> </ul>
<b>Unpublished statistics</b>	<b>17</b>	In some cases Stats SA can also make available statistics which are not published. The statistics can be made available as computer printouts or on CD. Generally a charge is made for providing unpublished statistics.
<b>Rounding-off of figures</b>	<b>18</b>	Where necessary, the figures in the tables have been rounded off to the nearest digit shown. There may therefore be slight discrepancies between the sums of the constituent items and the totals shown.

## Glossary

<b>Consumption of electricity</b>	For purposes of this release the term 'consumption of electricity' is used interchangeably with the term 'electricity available for distribution'.										
<b>Electricity undertaking</b>	An electricity undertaking is an undertaking concerned with the generation or transmission and distribution of electricity, including electrical power installations, which, as subsidiary divisions of undertakings, produce electricity for regular use by these undertakings.										
<b>Index of physical volume of electricity production</b>	A statistical measure of the change in the volume of production of electricity in a given period and the volume of production of electricity in the base period. The base period is 2005. The production in the base period is set at 100.										
<b>Industry</b>	An industry consists of a group of undertakings or establishments engaged in the same or similar kinds of economic activity. Industries are defined in the 1993 <i>System of National Accounts (1993 SNA)</i> in the same way as in the <i>Standard Industrial Classification of all Economic Activities (SIC)</i> , Fifth Edition, Report No. 09-90-02.										
<b>Unit of electricity</b>	One gigawatt-hour of electricity is equal to one million kilowatt-hours. A kilowatt-hour is the basic unit of electrical energy equal to one kilowatt of power supplied to or taken from an electric circuit steadily for one hour. One kilowatt-hour equals one thousand watt-hours.										
<b>Symbols and abbreviations</b>	<table border="0"> <tr> <td>GDP</td> <td>Gross domestic product</td> </tr> <tr> <td>ISIC</td> <td>International Standard Industrial Classification</td> </tr> <tr> <td>SIC</td> <td>Standard Industrial Classification of all Economic Activities</td> </tr> <tr> <td>Stats SA</td> <td>Statistics South Africa</td> </tr> <tr> <td>*</td> <td>Revised figures</td> </tr> </table>	GDP	Gross domestic product	ISIC	International Standard Industrial Classification	SIC	Standard Industrial Classification of all Economic Activities	Stats SA	Statistics South Africa	*	Revised figures
GDP	Gross domestic product										
ISIC	International Standard Industrial Classification										
SIC	Standard Industrial Classification of all Economic Activities										
Stats SA	Statistics South Africa										
*	Revised figures										

## General information

Stats SA publishes approximately 300 different statistical releases each year. It is not economically viable to produce them in more than one of South Africa's eleven official languages. Since the releases are used extensively, not only locally but also by international economic and social-scientific communities, Stats SA releases are published in English only.

Stats SA has copyright on this publication. Users may apply the information as they wish, provided that they acknowledge Stats SA as the source of the basic data wherever they process, apply, utilise, publish or distribute the data: and also that they specify that the relevant application and analysis (where applicable) result from their own processing of the data.

### Advanced release calendar

An advanced release calendar is disseminated on [www.statssa.gov.za](http://www.statssa.gov.za)

### Stats SA products

A complete set of Stats SA publications is available at the Stats SA Library and the following libraries:

National Library of South Africa, Pretoria Division  
National Library of South Africa, Cape Town Division  
Natal Society Library, Pietermaritzburg  
Library of Parliament, Cape Town  
Bloemfontein Public Library  
Johannesburg Public Library  
Eastern Cape Library Services, King William's Town  
Central Regional Library, Polokwane  
Central Reference Library, Nelspruit  
Central Reference Collection, Kimberley  
Central Reference Library, Mmabatho

Stats SA also provides a subscription service.

### Electronic services

A large range of data is available via on-line services, diskette, CD and computer printouts.

You can visit us on the Internet at: [www.statssa.gov.za](http://www.statssa.gov.za)

### General enquiries

Telephone number: (012) 310 4897 / 336 0142 (technical enquiries)  
(012) 310 8358 (orders)  
(012) 310 4883/ 4885/ 8018 (library)

Fax number: (012) 310 8664 (technical enquiries)

Email: [onicama@statssa.gov.za](mailto:onicama@statssa.gov.za) (technical enquiries)  
[nicolaic@statssa.gov.za](mailto:nicolaic@statssa.gov.za) (technical enquiries)  
[info@statssa.gov.za](mailto:info@statssa.gov.za) (user information services)  
[magdaj@statssa.gov.za](mailto:magdaj@statssa.gov.za) (orders)

Postal address: Private Bag X44, Pretoria, 0001

*Produced by Stats SA*