

Statistical release

P4141

Electricity generated and available for distribution (preliminary)

June 2008

**Embargoed until:
31 July 2008
13:00**

Enquiries:

User information services
Tel: (012) 310 8600/ 8390/ 8351

Forthcoming issue:

July 2008

Expected release date

4 September 2008

Contents

Page

SUMMARY OF FINDINGS: ELECTRICITY GENERATED AND AVAILABLE FOR DISTRIBUTION (JUNE 2008).....2

Key findings2

Consumption of electricity decreases.....2

Production of electricity decreases.....2

Key figures3

Table A – Selected key figures regarding electricity generated and available for distribution for June 20083

Table B – Comparison of the seasonally adjusted quantity of electricity generated and available for distribution between the current quarter and the previous quarter.....3

Table C – Comparison of actual estimates between the current quarter and the corresponding quarter of the previous year.....3

Figure 1 – Electricity produced and available for distribution in South Africa from 2005 to 2008.....4

Table 1 – Total volume of electricity available for distribution in South Africa: 2003 to 20085

Table 2 – Annual percentage change in electricity available for distribution in South Africa: 2003 to 20085

Table 3 – Seasonally adjusted total volume of electricity available for distribution in South Africa: 2003 to 20086

Table 4 – Indices of the physical volume of electricity production: 2003 to 2008.....7

Table 5 – Annual percentage change in indices of the physical volume of electricity production:.....7

Table 6 –Seasonally adjusted indices of the physical volume of electricity production: 2003 to 20088

Table 7 – Total volume of electricity imported: 2003 to 2008.....9

Table 8 – Total volume of electricity exported: 2003 to 2008.....9

Table 9a – Electricity produced and consumed in power stations, purchased and sold outside South Africa and available for distribution in South Africa (monthly figures) 10

Table 9b – Electricity produced and consumed in power stations, purchased and sold outside South Africa and available for distribution in South Africa (cumulative figures)..... 10

Explanatory Notes.....12

Glossary.....14

General information15

SUMMARY OF FINDINGS: ELECTRICITY GENERATED AND AVAILABLE FOR DISTRIBUTION (JUNE 2008)

Key findings

Consumption of electricity decreases

The estimated consumption of electricity in June 2008 decreased by 2,3% (-490 Gigawatt-hours) compared with June 2007, while an increase of 4,2% was recorded for June 2007 compared with June 2006 (see tables A, 2 and 9a). Electricity consumed for the three months ending June 2008 decreased by 1,4% (-839 Gigawatt-hours) compared with the same three months a year ago (see tables A and C). In the first six months of 2008, consumption of electricity was affected by numerous factors that led to reduced levels of consumption, such as load shedding and a continuous drive from Eskom in encouraging users to save on electricity consumption. Electricity consumption after seasonal adjustment for the latest three months ending June 2008 decreased by 0,2% compared with the previous three months ended March 2008 (see table A).

Production of electricity decreases

The estimated production of electricity, after seasonal adjustment, showed a decrease of 1,3% for the three months ending June 2008 compared with the preceding three months (see table A). The estimated total production of electricity in June 2008 decreased by 3,3% (-755 Gigawatt-hours) compared with June 2007 (see tables A and 9a). The estimated production of electricity during the latest three months ending June 2008 decreased by 1,5% (-1 013 Gigawatt-hours) compared with the same period of 2007 (see table C).

Distribution of electricity by Eskom to the provinces decreases

Electricity distributed to the provinces decreased by 2,0% for the first six months of 2008 compared with the first six months of 2007. Increases for the first six months of 2008 compared to the first six months of 2007 were reported for Mpumalanga (1,1% or 189 Gigawatt-hours) and Limpopo (0,5% or 27 Gigawatt-hours). Decreases were reported for Western Cape (-0,7% or -83 Gigawatt-hours), Gauteng (-1,3% or -404 Gigawatt-hours), North West (-1,8% or -232 Gigawatt-hours), KwaZulu-Natal (-4,2% or -901 Gigawatt-hours), Free State (-4,5% or -215 Gigawatt-hours), Eastern Cape (-6,7% or -332 Gigawatt-hours) and Northern Cape (-8,9% or -223 Gigawatt-hours) (see table 10).

Electricity imports in June 2008 recover to October 2007 levels

International trade in electricity for the first half of 2008 showed annual decreases for electricity imported from outside South Africa (-15,5% or -905 Gigawatt-hours) and electricity exported to neighbouring countries (-3,2% or -225 Gigawatt-hours) (see table 9b). The decrease in imports of electricity in the first five months of 2008 resulted from reduced availability from the Cahorra Bassa scheme owing to the planned refurbishment of an Eskom converter station and the unavailability of the transmission network in Zambia owing to system instability in that country. In June 2008 there was a 13,9% increase over June 2007 as imports returned to levels above 1 000 Gigawatt-hours for the first time since October 2007.

Key figures

Table A – Selected key figures regarding electricity generated and available for distribution for June 2008

| Estimates | June 2008 1/ | % change between June 2007 and June 2008 | % change between April to June 2007 and April to June 2008 | % change between January to June 2007 and January to June 2008 |
|-------------------------------------------------------------------|-----------------|---------------------------------------------------|------------------------------------------------------------------------|-------------------------------------------------------------------------------|
| Electricity available for distribution (Gigawatt-hours) | 20 530 | -2,3 | -1,4 | -1,1 |
| Index of the physical volume of electricity production (2005=100) | 108,8 | -3,3 | -1,6 | -0,5 |

1/ Preliminary.

| Seasonally adjusted estimates | June 2008 | % change between May and June 2008 | % change between January to March 2008 and April to June 2008 |
|-------------------------------------------------------------------|-----------|------------------------------------------|---------------------------------------------------------------------------|
| Electricity available for distribution (Gigawatt-hours) | 19 769 | 1,3 | -0,2 |
| Index of the physical volume of electricity production (2005=100) | 104,9 | -0,4 | -1,3 |

Table B – Comparison of the seasonally adjusted quantity of electricity generated and available for distribution between the current quarter and the previous quarter

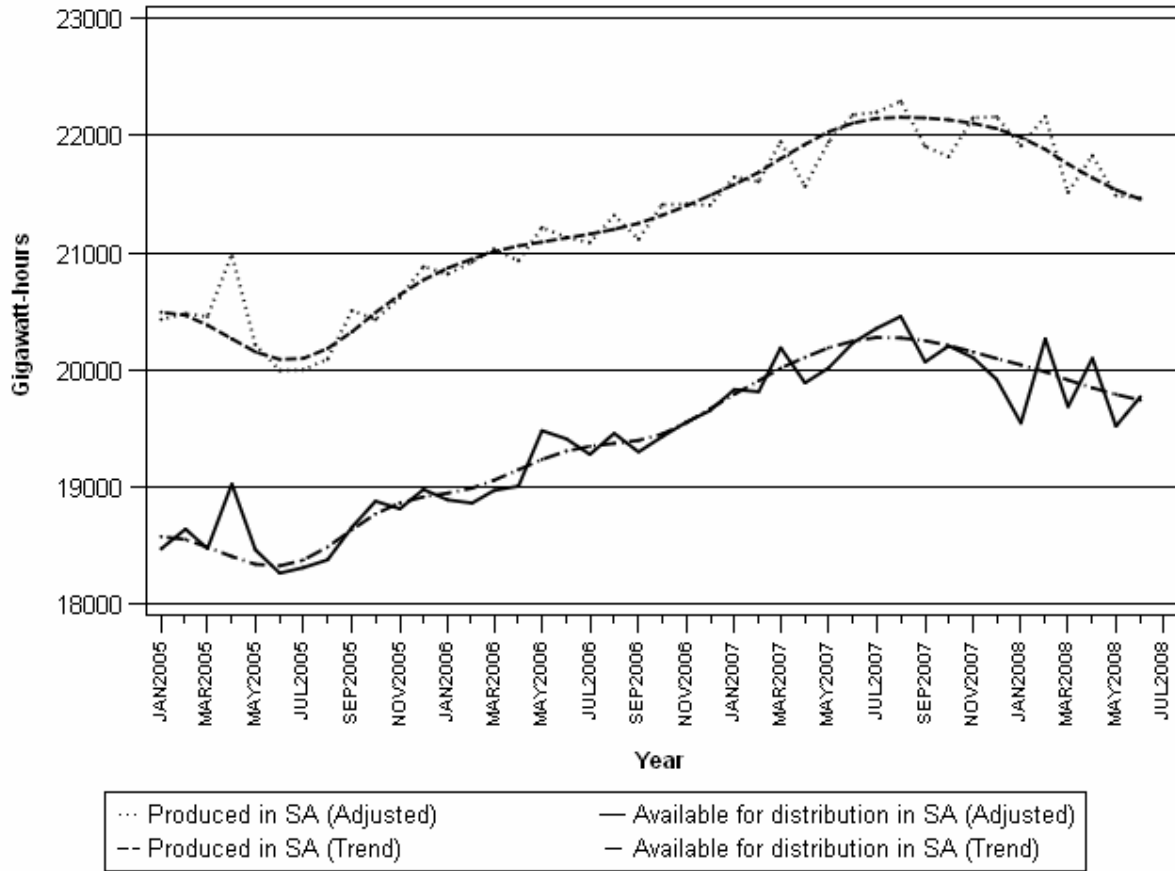
| Gigawatt-hours | Seasonally adjusted quantity January to March 2008 | Seasonally adjusted quantity April to June 2008 | % change between January to March 2008 and April to June 2008 | Quantity difference between January to March 2008 and April to June 2008 |
|--------------------------------------------------------|----------------------------------------------------------------|-------------------------------------------------------------|------------------------------------------------------------------------------|-----------------------------------------------------------------------------------------|
| Electricity produced | 65 586 | 64 783 | -1,2 | -803 |
| Electricity available for distribution in South Africa | 59 494 | 59 387 | -0,2 | -107 |

Table C – Comparison of actual estimates between the current quarter and the corresponding quarter of the previous year

| Gigawatt-hours | Actual quantity April to June 2007 | Actual quantity April to June 2008 | % change between April to June 2007 and April to June 2008 | Quantity difference between April to June 2007 and April to June 2008 |
|--------------------------------------------------------|------------------------------------------|------------------------------------------|------------------------------------------------------------------------|-----------------------------------------------------------------------------------|
| Electricity produced | 66 393 | 65 380 | -1,5 | -1 013 |
| Purchased outside South Africa (import) | 2 835 | 2 608 | -8,0 | -227 |
| Consumed in power stations and auxiliary systems | 4 735 | 4 648 | -1,8 | -87 |
| Sold outside South Africa (export) | 3 591 | 3 276 | -8,8 | -315 |
| Electricity available for distribution in South Africa | 60 903 | 60 064 | -1,4 | -839 |

Figure 1 below shows the seasonally adjusted and trend patterns for electricity produced and available for distribution in South Africa between January 2005 and June 2008.

Figure 1 – Electricity produced and available for distribution in South Africa from 2005 to 2008



P J Lehohla
Statistician-General

Detailed results: Tables

Table 1 – Total volume of electricity available for distribution in South Africa: 2003 to 2008

| | 2003 | 2004 | 2005 | 2006 | 2007 | 2008 |
|-----------|----------------|----------------|----------------|----------------|----------------|-----------|
| January | 17 095 | 17 850 | 18 149 | 18 603 | 19 561 | 19 285 |
| February | 16 168 | 17 277 | 17 169 | 17 396 | 18 301 | 18 695 |
| March | 17 655 | 18 476 | 18 487 | 18 982 | 20 160 | 19 625 |
| April | 16 905 | 17 524 | 18 133 | 18 122 | 18 982 | 19 151 |
| May | 18 159 | 18 909 | 19 224 | 20 312 | 20 901 | 20 383 |
| June | 18 330 | 19 337 | 18 983 | 20 166 | 21 020 | 1/ 20 530 |
| July | 19 183 | 20 156 | 19 657 | 20 632 | 21 780 | |
| August | 18 714 | 19 265 | 19 191 | 20 307 | 21 353 | |
| September | 17 526 | 18 362 | 18 384 | 18 987 | 19 732 | |
| October | 18 480 | 18 714 | 19 127 | 19 663 | 20 435 | |
| November | 17 790 | 18 314 | 18 523 | 19 244 | 19 785 | |
| December | 17 456 | 17 754 | 18 230 | 18 909 | 19 160 | |
| Year | 213 461 | 221 938 | 223 257 | 231 323 | 241 170 | |

1/ Preliminary.

Table 2 – Annual percentage change in electricity available for distribution in South Africa: 2003 to 2008

| | Percentage | | | | | |
|-----------|------------|------------|------------|------------|------------|------|
| | 2003 | 2004 | 2005 | 2006 | 2007 | 2008 |
| January | 5,6 | 4,4 | 1,7 | 2,5 | 5,1 | -1,4 |
| February | 6,3 | 6,9 | -0,6 | 1,3 | 5,2 | 2,2 |
| March | 6,7 | 4,7 | 0,1 | 2,7 | 6,2 | -2,7 |
| April | 3,3 | 3,7 | 3,5 | -0,1 | 4,7 | 0,9 |
| May | 1,7 | 4,1 | 1,7 | 5,7 | 2,9 | -2,5 |
| June | 1,7 | 5,5 | -1,8 | 6,2 | 4,2 | -2,3 |
| July | 1,2 | 5,1 | -2,5 | 5,0 | 5,6 | |
| August | 3,6 | 2,9 | -0,4 | 5,8 | 5,2 | |
| September | 2,3 | 4,8 | 0,1 | 3,3 | 3,9 | |
| October | 4,2 | 1,3 | 2,2 | 2,8 | 3,9 | |
| November | 3,2 | 2,9 | 1,1 | 3,9 | 2,8 | |
| December | 4,5 | 1,7 | 2,7 | 3,7 | 1,3 | |
| Year | 3,6 | 4,0 | 0,6 | 3,6 | 4,3 | |

The percentage change is the change in the index of the physical volume of electricity available for distribution of the relevant year compared with the index of the physical volume of electricity available for distribution of the previous year expressed as a percentage.

Table 3 – Seasonally adjusted total volume of electricity available for distribution in South Africa: 2003 to 2008

| | Gigawatt-hours | | | | | | % change between current and previous month |
|------------------|----------------|--------|--------|--------|--------|--------|---------------------------------------------|
| | 2003 | 2004 | 2005 | 2006 | 2007 | 2008 | |
| January | 17 441 | 18 195 | 18 473 | 18 890 | 19 832 | 19 545 | -1,9 |
| February | 17 608 | 18 755 | 18 641 | 18 863 | 19 813 | 20 265 | 3,7 |
| March | 17 594 | 18 407 | 18 474 | 18 971 | 20 188 | 19 684 | -2,9 |
| April | 17 686 | 18 348 | 19 026 | 19 007 | 19 888 | 20 099 | 2,1 |
| May | 17 435 | 18 154 | 18 464 | 19 481 | 20 016 | 19 519 | -2,9 |
| June | 17 598 | 18 574 | 18 265 | 19 411 | 20 230 | 19 769 | 1,3 |
| July | 17 823 | 18 743 | 18 312 | 19 278 | 20 353 | | |
| August | 17 937 | 18 476 | 18 379 | 19 458 | 20 456 | | |
| September | 17 761 | 18 613 | 18 657 | 19 299 | 20 067 | | |
| October | 18 212 | 18 451 | 18 879 | 19 429 | 20 204 | | |
| November | 18 083 | 18 614 | 18 814 | 19 554 | 20 104 | | |
| December | 18 329 | 18 542 | 18 979 | 19 652 | 19 919 | | |

Table 4 – Indices of the physical volume of electricity production: 2003 to 2008

| | Base : 2005=100 | | | | | |
|-----------|-----------------|-------------|--------------|--------------|--------------|----------|
| | 2003 | 2004 | 2005 | 2006 | 2007 | 2008 |
| January | 89,6 | 95,5 | 97,6 | 99,8 | 103,9 | 105,3 |
| February | 84,7 | 92,2 | 91,7 | 94,0 | 97,2 | 99,7 |
| March | 92,9 | 98,7 | 100,2 | 103,3 | 107,8 | 105,6 |
| April | 90,1 | 94,7 | 98,1 | 98,0 | 100,9 | 102,0 |
| May | 97,2 | 102,4 | 102,9 | 108,1 | 112,0 | 109,6 |
| June | 98,5 | 105,0 | 101,6 | 107,3 | 112,5 | 1/ 108,8 |
| July | 102,5 | 109,5 | 105,5 | 110,8 | 116,6 | |
| August | 102,4 | 104,3 | 103,0 | 109,1 | 114,1 | |
| September | 97,0 | 99,5 | 99,1 | 101,8 | 105,5 | |
| October | 102,2 | 102,1 | 102,5 | 107,2 | 109,1 | |
| November | 96,4 | 98,5 | 99,4 | 103,3 | 106,9 | |
| December | 94,0 | 96,0 | 98,2 | 100,9 | 104,6 | |
| Year | 95,6 | 99,9 | 100,0 | 103,6 | 107,6 | |

1/ Preliminary.

Table 5 – Annual percentage change in indices of the physical volume of electricity production: 2003 to 2008

| | 2003 | 2004 | 2005 | 2006 | 2007 | 2008 |
|-----------|------------|------------|------------|------------|------------|------|
| January | 5,8 | 6,6 | 2,2 | 2,3 | 4,1 | 1,3 |
| February | 7,2 | 8,9 | -0,5 | 2,5 | 3,4 | 2,6 |
| March | 8,4 | 6,2 | 1,5 | 3,1 | 4,4 | -2,0 |
| April | 5,9 | 5,1 | 3,6 | -0,1 | 3,0 | 1,1 |
| May | 3,3 | 5,3 | 0,5 | 5,1 | 3,6 | -2,1 |
| June | 3,9 | 6,6 | -3,2 | 5,6 | 4,8 | -3,3 |
| July | 3,1 | 6,8 | -3,7 | 5,0 | 5,2 | |
| August | 8,4 | 1,9 | -1,2 | 5,9 | 4,6 | |
| September | 7,4 | 2,6 | -0,4 | 2,7 | 3,6 | |
| October | 8,4 | -0,1 | 0,4 | 4,6 | 1,8 | |
| November | 5,4 | 2,2 | 0,9 | 3,9 | 3,5 | |
| December | 7,6 | 2,1 | 2,3 | 2,7 | 3,7 | |
| Year | 6,2 | 4,4 | 0,1 | 3,7 | 3,8 | |

The percentage change is the change in the index of the physical volume of electricity production of the relevant year compared with the index of the physical volume of electricity production of the previous year expressed as a percentage.

Table 6 – Seasonally adjusted indices of the physical volume of electricity production: 2003 to 2008

| | Base : 2005=100 | | | | | | % change between current and previous month |
|------------------|-----------------|-------|-------|-------|-------|-------|---------------------------------------------|
| | 2003 | 2004 | 2005 | 2006 | 2007 | 2008 | |
| January | 92,0 | 98,1 | 100,2 | 102,3 | 106,3 | 107,6 | -0,9 |
| February | 93,0 | 101,1 | 100,3 | 102,5 | 105,7 | 108,4 | 0,7 |
| March | 93,1 | 98,7 | 100,1 | 103,0 | 107,5 | 105,3 | -2,9 |
| April | 94,4 | 99,2 | 102,8 | 102,7 | 105,7 | 106,9 | 1,5 |
| May | 93,6 | 98,7 | 99,2 | 104,0 | 107,7 | 105,3 | -1,5 |
| June | 94,4 | 100,8 | 97,7 | 103,2 | 108,3 | 104,9 | -0,4 |
| July | 94,8 | 101,6 | 98,0 | 103,2 | 108,7 | | |
| August | 97,8 | 99,7 | 98,5 | 104,3 | 109,2 | | |
| September | 97,7 | 100,5 | 100,4 | 103,5 | 107,4 | | |
| October | 99,5 | 99,6 | 100,2 | 105,2 | 107,2 | | |
| November | 98,0 | 100,1 | 100,9 | 104,9 | 108,5 | | |
| December | 99,0 | 100,5 | 102,3 | 104,8 | 108,6 | | |

Table 7 – Total volume of electricity imported: 2003 to 2008

| Month | Gigawatt-hours | | | | | |
|-------------|----------------|--------------|--------------|--------------|---------------|----------|
| | 2003 | 2004 | 2005 | 2006 | 2007 | 2008 |
| January | 705 | 828 | 729 | 872 | 1 088 | 638 |
| February | 637 | 811 | 714 | 646 | 942 | 885 |
| March | 706 | 863 | 533 | 581 | 973 | 802 |
| April | 547 | 641 | 598 | 587 | 1 055 | 844 |
| May | 569 | 547 | 849 | 879 | 900 | 762 |
| June | 518 | 560 | 813 | 881 | 880 | 1/ 1 002 |
| July | 792 | 607 | 856 | 926 | 984 | |
| August | 424 | 618 | 883 | 930 | 1 045 | |
| September | 266 | 590 | 686 | 971 | 1 026 | |
| October | 272 | 536 | 836 | 682 | 1 040 | |
| November | 583 | 746 | 865 | 862 | 796 | |
| December | 720 | 679 | 837 | 965 | 619 | |
| Year | 6 739 | 8 026 | 9 199 | 9 782 | 11 348 | |

1/ Preliminary.

Table 8 – Total volume of electricity exported: 2003 to 2008

| Month | Gigawatt-hours | | | | | |
|-------------|----------------|---------------|---------------|---------------|---------------|----------|
| | 2003 | 2004 | 2005 | 2006 | 2007 | 2008 |
| January | 578 | 1 037 | 1 030 | 1 056 | 1 134 | 1 278 |
| February | 508 | 977 | 901 | 1 050 | 1 060 | 1 101 |
| March | 607 | 1 027 | 968 | 1 129 | 1 231 | 1 136 |
| April | 619 | 951 | 991 | 1 017 | 1 132 | 998 |
| May | 805 | 944 | 1 083 | 1 046 | 1 203 | 1 119 |
| June | 798 | 1 057 | 1 096 | 1 102 | 1 256 | 1/ 1 159 |
| July | 944 | 1 140 | 1 102 | 1 239 | 1 301 | |
| August | 1 030 | 1 049 | 1 144 | 1 262 | 1 252 | |
| September | 1 051 | 1 048 | 1 134 | 1 239 | 1 186 | |
| October | 1 116 | 1 112 | 1 161 | 1 311 | 1 252 | |
| November | 1 025 | 1 082 | 1 119 | 1 186 | 1 256 | |
| December | 1 055 | 1 029 | 1 155 | 1 129 | 1 233 | |
| Year | 10 136 | 12 453 | 12 884 | 13 766 | 14 496 | |

1/ Preliminary.

Table 9a – Electricity produced and consumed in power stations, purchased and sold outside South Africa and available for distribution in South Africa (monthly figures)

| | | Gigawatt-hours | | | | |
|------------------------------|--------------------------------------------------------|----------------|----------|-----------------|---------------------------------------------------|--------------------------------------------------|
| | | June 2007 | May 2008 | June 2008 1/ | % Change between June 2007 and June 2008 | Difference between June 2007 and June 2008 |
| Total - All producers | Electricity produced | 22 957 | 22 362 | 22 202 | -3,3 | -755 |
| | Purchased outside South Africa (import) | 880 | 762 | 1 002 | 13,9 | 122 |
| | Consumed in power stations and auxiliary systems | 1 562 | 1 622 | 1 515 | -3,0 | -47 |
| | Sold outside South Africa (export) | 1 256 | 1 119 | 1 159 | -7,7 | -97 |
| | Electricity available for distribution in South Africa | 21 020 | 20 383 | 20 530 | -2,3 | -490 |
| ESKOM | Electricity produced | 21 952 | 21 416 | 21 158 | -3,6 | -794 |
| | Purchased outside South Africa (import) | 880 | 762 | 1 002 | 13,9 | 122 |
| | Consumed in power stations and auxiliary systems | 1 482 | 1 548 | 1 435 | -3,2 | -47 |
| | Sold outside South Africa (export) | 1 256 | 1 119 | 1 159 | -7,7 | -97 |
| | Electricity available for distribution in South Africa | 20 095 | 19 510 | 19 566 | -2,6 | -529 |

Table 9b – Electricity produced and consumed in power stations, purchased and sold outside South Africa and available for distribution in South Africa (cumulative figures)

| | | Gigawatt-hours | | | |
|------------------------------|--------------------------------------------------------|-------------------------|-------------------------------|-------------------------------------------------------------------------------|------------------------------------------------------------------------------|
| | | January to June 2007 | January to June 2008 1/ | % Change between January to June 2007 and January to June 2008 | Difference between January to June 2007 and January to June 2008 |
| Total - All producers | Electricity produced | 129 449 | 128 781 | -0,5 | -668 |
| | Purchased outside South Africa (import) | 5 838 | 4 933 | -15,5 | -905 |
| | Consumed in power stations and auxiliary systems | 9 347 | 9 252 | -1,0 | -95 |
| | Sold outside South Africa (export) | 7 016 | 6 791 | -3,2 | -225 |
| | Electricity available for distribution in South Africa | 118 925 | 117 669 | -1,1 | -1 256 |
| ESKOM | Electricity produced | 124 571 | 123 349 | -1,0 | -1 222 |
| | Purchased outside South Africa (import) | 5 838 | 4 933 | -15,5 | -905 |
| | Consumed in power stations and auxiliary systems | 8 956 | 8 825 | -1,5 | -131 |
| | Sold outside South Africa (export) | 7 016 | 6 791 | -3,2 | -225 |
| | Electricity available for distribution in South Africa | 114 439 | 112 663 | -1,6 | -1 776 |

1/ Preliminary.

Table 10 – Electricity distributed by Eskom by province for 2007 and 2008 1/

| | | Gigawatt-hours | | | | | | | | | |
|-------------|---------------------|----------------|--------------|---------------|--------------|---------------|---------------|---------------|---------------|---------------|--------------------|
| | | Western Cape | Eastern Cape | Northern Cape | Free State | KwaZulu-Natal | North West | Gauteng | Mpumalanga | Limpopo | Total South Africa |
| 2007 | January | 1 955 | 770 | 456 | 780 | 3 541 | 2 168 | 4 809 | 2 835 | 930 | 18 244 |
| | February | 1 817 | 746 | 410 | 718 | 3 326 | 2 074 | 4 583 | 2 561 | 878 | 17 113 |
| | March | 2 018 | 816 | 467 | 793 | 3 650 | 2 299 | 5 070 | 2 884 | 965 | 18 962 |
| | April | 1 861 | 854 | 371 | 769 | 3 416 | 2 079 | 4 758 | 2 665 | 915 | 17 688 |
| | May | 2 012 | 951 | 401 | 825 | 3 702 | 2 279 | 5 563 | 2 866 | 975 | 19 574 |
| | June | 1 989 | 828 | 413 | 841 | 3 643 | 2 231 | 5 788 | 2 814 | 957 | 19 504 |
| | July | 2 007 | 820 | 442 | 884 | 3 805 | 2 257 | 6 013 | 2 974 | 966 | 20 168 |
| | August | 2 060 | 825 | 417 | 840 | 3 738 | 2 268 | 5 635 | 2 918 | 961 | 19 662 |
| | September | 1 904 | 884 | 401 | 790 | 3 581 | 2 254 | 4 930 | 2 764 | 927 | 18 435 |
| | October | 1 985 | 812 | 413 | 775 | 3 693 | 2 335 | 5 125 | 2 878 | 944 | 18 960 |
| | November | 1 907 | 763 | 419 | 801 | 3 574 | 2 285 | 4 963 | 2 773 | 915 | 18 400 |
| | December | 1 895 | 696 | 417 | 740 | 3 524 | 1 986 | 4 760 | 2 770 | 937 | 17 725 |
| | Year | 23 410 | 9 765 | 5 027 | 9 556 | 43 193 | 26 515 | 61 997 | 33 702 | 11 270 | 224 435 |
| | Year to date | 11 652 | 4 965 | 2 518 | 4 726 | 21 278 | 13 130 | 30 571 | 16 625 | 5 620 | 111 085 |
| 2008 | January | 1 928 | 749 | 396 | 749 | 3 552 | 2 207 | 4 861 | 2 661 | 874 | 17 977 |
| | February | 1 839 | 758 | 396 | 700 | 3 390 | 2 102 | 4 640 | 2 600 | 898 | 17 323 |
| | March | 1 937 | 779 | 393 | 749 | 3 363 | 2 217 | 4 945 | 2 801 | 934 | 18 118 |
| | April | 1 893 | 753 | 363 | 717 | 3 322 | 2 089 | 4 784 | 2 796 | 934 | 17 651 |
| | May | 1 985 | 760 | 373 | 796 | 3 417 | 2 141 | 5 414 | 2 990 | 1 015 | 18 891 |
| | June 2/ | 1 987 | 834 | 374 | 800 | 3 333 | 2 142 | 5 523 | 2 966 | 992 | 18 951 |
| | Year to date | 11 569 | 4 633 | 2 295 | 4 511 | 20 377 | 12 898 | 30 167 | 16 814 | 5 647 | 108 911 |

1/ Wholesale energy as delivered by Eskom to the various provinces.

2/ Preliminary.

Explanatory Notes

| | | |
|--------------------------------------|----|-------------------------------------------------------------------------------------------------------------------------------------------------------------------------------------------------------------------------------------------------------------------------------------------------------------------------------------------------------------------------------------------------------------------------------------------------------------------------------------------------------------------------------------------------------------------------------------------------------------------------------------------------------------------------------------------------------|
| Introduction | 1 | Statistics South Africa (Stats SA) conducts a monthly sample survey of the electricity industry covering electricity undertakings and establishments (branches). This statistical release contains information regarding the number of electricity units generated and available for distribution in South Africa, the number of units purchased and sold outside South Africa and the number of units distributed by Eskom by province on a monthly basis. Both actual and seasonally adjusted figures are published. |
| | 2 | This statistical release reflects indices of the physical volume of electricity production on the basis of 2005=100. In accordance with international practice, the indices have to be rebased every five years to a new base year. |
| | 3 | In order to improve timeliness of the publication, some information for the current month may have been estimated due to late submission by respondents. These estimates will be revised in the next statistical release(s) as soon as actual information is available. |
| Purpose of the survey | 4 | The results of the monthly electricity generated and available for distribution survey are used to compile estimates of the Gross Domestic Product (GDP) and its components, which are used in monitoring the state of the economy and formulation of economic policy. |
| Scope of the survey | 5 | This survey covers electricity undertakings and establishments conducting activities concerned with the generation or transmission and distribution of electricity, including electrical power installations, which, as subsidiary divisions of undertakings, produce electricity for regular use by these undertakings. |
| Classification | 6 | The 1993 edition of the <i>Standard Industrial Classification of all Economic Activities (SIC)</i> , Fifth Edition, Report No. 09-90-02, was used to classify the statistical units in the survey. The SIC is based on the 1990 <i>International Standard Industrial Classification of all Economic Activities (ISIC)</i> with suitable adaptations for local conditions. Each statistical unit is classified to an industry, which reflects the predominant activity of the electricity undertaking or establishment. |
| Response rate | 7 | The response rate for the survey on electricity generated and available for distribution for June 2008 was 99%. |
| Statistical unit | 8 | The basic statistical unit for the collection of information is the electricity undertaking or establishment. The electricity undertaking or establishment is the smallest economic unit that functions as a separate entity. Each statistical unit is classified to an industry (see paragraph 5). |
| Survey methodology and design | 9 | All statistical units are stratified by type of economic activity according to the <i>Standard Industrial Classification of all Economic Activities (SIC)</i> and measure of size, where measure of size is the volume of electricity generated by the electricity undertaking or establishment. All large undertakings or establishments (size category one cases) are completely enumerated. A sample is drawn from medium and small size undertakings and establishments by systematically selecting undertakings or establishments within each size category. An electricity undertaking or establishment with a total generating capacity of less than 500 kilowatt is excluded from the sample. |
| | 10 | The survey is conducted by mail each month collecting information from a sample of 22 electricity undertakings or establishments. |

| | | |
|-----------------------------------|-----------|---------------------------------------------------------------------------------------------------------------------------------------------------------------------------------------------------------------------------------------------------------------------------------------------------------------------------------------------------------------------------------------------------------------------------------------------------------------------------------------------------------------------------------------------------------------------------------------------------------------------------------------------------------------------------------------------------------------------------------------------------------------------------------------------------------------------------------------------------------------------------------|
| Monthly production indices | 11 | The calculation of the monthly production indices is based on the number of electricity units produced. |
| Benchmarking | 12 | The index of physical volume of electricity production should provide an accurate reflection of the trend of activities of the relevant industry. The level of activities as measured by the monthly electricity generated and available for distribution survey is based on information received from a sample of electricity undertakings and establishments, which are weighted according to the original sample, designed in order to represent the population of electricity undertakings and establishments. It is necessary to adjust the level of activities as measured by the monthly sample survey to the level of activities as measured periodically by the Census of electricity, gas and steam. This procedure, whereby the latest results of an economic census are used to compile more accurate level estimates for a certain year, is known as benchmarking. |
| | 13 | The results of the 1995 Census of electricity, gas and steam served as benchmarks to verify or adjust the level of the monthly physical volume of electricity production indices collected through the monthly sample survey. The level adjustments were done on the volume indices for August of the relevant census year (the 1995 census year covered the period 1 January 1995 to 31 December 1995 and therefore, the benchmarking was done using the index of August 1995 as reference point). |
| Seasonal adjustment | 14 | Seasonally adjusted estimates of all items are generated each month, using the X-11 Seasonal Adjustment Program developed by US Bureau of the Census Economic Research and Analyses Division, 1968. Seasonal adjustment is a means of removing the estimated effects of normal seasonal variation from the series so that the effects of other influences on the series can be more clearly recognized. Seasonal adjustment does not aim to remove irregular or non-seasonal influences, which may be present in any particular month. Influences that are volatile or unsystematic can still make it difficult to interpret the movement of the series even after adjustment for seasonal variations. This means the month-to-month movements of seasonally adjusted estimates may not be reliable indicators of trend behaviour. |
| Trend cycle | 15 | The trend is the long-term pattern or movement of a time series. The X-11 Seasonal Adjustment Program is used for smoothing seasonally adjusted estimates. |
| Related publications | 16 | Users may also wish to refer to the following publications which are available from Stats SA - <ul style="list-style-type: none"> • <i>Bulletin of Statistics.</i> • <i>SA Statistics.</i> |
| Unpublished statistics | 17 | In some cases Stats SA can also make available statistics, which are not published. The statistics can be made available as computer printouts, on diskette or CD. Generally a charge is made for providing unpublished statistics. |
| Rounding-off figures | 18 | The figures in the tables have, where necessary, been rounded off to the nearest digit shown. There may, therefore, be slight discrepancies between the sums of the constituent items and the totals shown. |
| Pre-release policy | 19 | Stats SA pre-release policy may be inspected at its website, www.statssa.gov.za . |

Glossary

| | | | | | | | | | | | |
|-----------------------------------------------------------|------------------------------------------------------------------------------------------------------------------------------------------------------------------------------------------------------------------------------------------------------------------------------------------------------------------------------------------------------------------------------------|-----|------------------------|------|--------------------------------------------------|-----|---------------------------------------------------------------|----------|-------------------------|---|-----------------|
| Electricity undertaking | An electricity undertaking is an undertaking concerned with the generation or transmission and distribution of electricity, including electrical power installations, which as subsidiary divisions of undertakings produce electricity for regular use by these undertakings. | | | | | | | | | | |
| Index of physical volume of electricity production | A statistical measure of the change in the volume of production of electricity in a given period and the volume of production of electricity in the base period. The base period is 2005. The production in the base period is set at 100. | | | | | | | | | | |
| Industry | An industry consists of a group of undertakings or establishments engaged in the same or similar kinds of economic activity. Industries are defined in the 1993 <i>System of National Accounts (1993 SNA)</i> in the same way as in the <i>Standard Industrial Classification of all Economic Activities (SIC)</i> , Fifth Edition, Report No. 09-90-02. | | | | | | | | | | |
| Unit of electricity | One gigawatt-hour of electricity is equal to one million kilowatt-hours. A kilowatt-hour is the basic unit of electrical energy equal to one kilowatt of power supplied to or taken from an electric circuit steadily for one hour. One kilowatt-hour equals one thousand watt-hours. | | | | | | | | | | |
| Symbols and abbreviations | <table border="0"> <tr> <td>GDP</td> <td>Gross Domestic Product</td> </tr> <tr> <td>ISIC</td> <td>International Standard Industrial Classification</td> </tr> <tr> <td>SIC</td> <td>Standard Industrial Classification of all Economic Activities</td> </tr> <tr> <td>Stats SA</td> <td>Statistics South Africa</td> </tr> <tr> <td>*</td> <td>Revised figures</td> </tr> </table> | GDP | Gross Domestic Product | ISIC | International Standard Industrial Classification | SIC | Standard Industrial Classification of all Economic Activities | Stats SA | Statistics South Africa | * | Revised figures |
| GDP | Gross Domestic Product | | | | | | | | | | |
| ISIC | International Standard Industrial Classification | | | | | | | | | | |
| SIC | Standard Industrial Classification of all Economic Activities | | | | | | | | | | |
| Stats SA | Statistics South Africa | | | | | | | | | | |
| * | Revised figures | | | | | | | | | | |

General information

Stats SA publishes approximately 300 different statistical releases each year. It is not economically viable to produce them in more than one of South Africa's eleven official languages. Since the releases are used extensively, not only locally but also by international economic and social-scientific communities, Stats SA releases are published in English only.

Stats SA has copyright on this publication. Users may apply the information as they wish, provided that they acknowledge Stats SA as the source of the basic data wherever they process, apply, utilise, publish or distribute the data: and also that they specify that the relevant application and analysis (where applicable) result from their own processing of the data.

Advanced release calendar

An advanced release calendar is disseminated on www.statssa.gov.za

Stats SA products

A complete set of Stats SA publications is available at the Stats SA Library and the following libraries:

National Library of South Africa, Pretoria Division
National Library of South Africa, Cape Town Division
Natal Society Library, Pietermaritzburg
Library of Parliament, Cape Town
Bloemfontein Public Library
Johannesburg Public Library
Eastern Cape Library Services, King William's Town
Central Regional Library, Polokwane
Central Reference Library, Nelspruit
Central Reference Collection, Kimberley
Central Reference Library, Mmabatho

Stats SA also provides a subscription service.

Electronic services

A large range of data is available via on-line services, diskette, CD and computer printouts. For more details about our electronic data services, contact (012) 310 8600/8390/8351/8496/4892/8095.

You can visit us on the Internet at: www.statssa.gov.za

General enquiries

Telephone number: (012) 336 0142 (technical enquiries)
(012) 310 8161 (orders)
(012) 310 4883/ 4885/ 8018 (library)

Fax number: (012) 310 8664 (technical enquiries)

email: gerdab@statssa.gov.za (technical enquiries)
nicolaic@statssa.gov.za (technical enquiries)
info@statssa.gov.za (user information services)
distribution@statssa.gov.za (orders)

Postal address: Private Bag X44, Pretoria, 0001

Produced by Stats SA