

# Statistical release

## P4141

# Electricity generated and available for distribution (preliminary)

June 2007

Embargoed until:  
2 August 2007  
13:00

**Enquiries:**

User information services  
Tel: (012) 310 8600/ 8390/ 8351

**Forthcoming issue:**

July 2007

**Expected release date**

6 September 2007

**Contents**

**Page**

**SUMMARY OF FINDINGS: ELECTRICITY GENERATED AND AVAILABLE FOR DISTRIBUTION (JUNE 2007)..... 2**

**Key findings..... 2**

Consumption of electricity increases ..... 2

Production of electricity increases..... 2

Distribution of electricity by Eskom to the provinces increases ..... 2

**Key figures..... 2**

Table A - Selected key figures regarding electricity generated and available for distribution for June 2007 ..... 2

Table B - Percentage change in the seasonally adjusted quantity of electricity generated and available for distribution between the current quarter and the previous quarter ..... 3

Table C - Percentage change between the current quarter and the corresponding quarter of the previous year ..... 3

Figure 1 - Electricity produced and available for distribution in South Africa from 2004 to 2007 ..... 4

Table 1 - Total volume of electricity available for distribution in South Africa: 2002 to 2007 ..... 5

Table 2 - Percentage change in electricity available for distribution in South Africa: 2002 to 2007 ..... 5

Table 3 - Seasonally adjusted total volume of electricity available for distribution in South Africa: 2002 to 2007 ..... 6

Table 4 - Indices of the physical volume of electricity production: 2002 to 2007..... 7

Table 5 - Percentage change in indices of the physical volume of electricity production: 2002 to 2007..... 7

Table 6 - Seasonally adjusted indices of the physical volume of electricity production: 2002 to 2007 ..... 8

Table 7 - Total volume of electricity imported: 2002 to 2007 ..... 9

Table 8 - Total volume of electricity exported: 2002 to 2007 ..... 9

Table 9a - Electricity produced and consumed in power stations, purchased and sold outside South Africa and available for distribution in South Africa (monthly figures)..... 10

Table 9b - Electricity produced and consumed in power stations, purchased and sold outside South Africa and available for distribution in South Africa (cumulative figures) ..... 10

Table 10 - Electricity distributed by Eskom by province for 2006 and 2007 ..... 11

**Explanatory Notes..... 12**

**Glossary ..... 14**

**General information ..... 15**

## SUMMARY OF FINDINGS: ELECTRICITY GENERATED AND AVAILABLE FOR DISTRIBUTION (JUNE 2007)

### Key findings

#### Consumption of electricity increases

The estimated consumption of electricity in June 2007 increased by 4,3% (863 Gigawatt-hours) compared with June 2006 to a record high of 21 029 Gigawatt-hours (see tables A and 1). The estimated volume of electricity consumed (available for distribution) for the three months ending June 2007 increased by 4,0% (2 321 Gigawatt-hours) compared with the quarter ending June 2006 (see tables A and C). Electricity consumption after seasonal adjustment for the three months ending June 2007 increased by 0,9% compared with the previous quarter (see tables A and B).

#### Production of electricity increases

The estimated production of electricity in June 2007 increased by 4,8% (1 054 Gigawatt-hours) compared with June 2006 (see tables A and 9a). Electricity production by Eskom increased by 5,2% (1 077 Gigawatt-hours) in June 2007 compared with June 2006 (see table 9a). The estimated production of electricity for the three months ending June 2007 increased by 3,8% (2 428 Gigawatt-hours) compared with the three months ending June 2006 (see tables A and C). Furthermore, the estimated production of electricity, after seasonal adjustment, increased by 0,8% for the three months ending June 2007 compared to the previous three months (see table A).

#### Distribution of electricity by Eskom to the provinces increases

Changes in electricity consumption in the provinces do not all follow the same trend of increase as depicted for South Africa. Increases for the first six months of 2007 compared to the first six months of 2006 were reported for Eastern Cape (30,8% or 1 166 Gigawatt-hours), Northern Cape (13,6% or 302 Gigawatt-hours), North West (8,6% or 1 038 Gigawatt-hours), Free State (6,5% or 288 Gigawatt-hours), Gauteng (6,4% or 1 837 Gigawatt-hours), Mpumalanga (6,2% or 972 Gigawatt-hours) and Western Cape (6,0% or 659 Gigawatt-hours). However, less electricity was distributed to Limpopo (-1,8% or -103 Gigawatt-hours) and KwaZulu-Natal (-3,3% or -719 Gigawatt-hours) (see table 10).

### Key figures

**Table A - Selected key figures regarding electricity generated and available for distribution for June 2007**

Estimates	June 2007 1/	% change between June 2006 and June 2007	% change between April to June 2006 and April to June 2007	% change between January to June 2006 and January to June 2007
Electricity available for distribution (Gigawatt-hours)	21 029	4,3	4,0	4,8
Index of the physical volume of electricity production (2005=100)	112,4	4,8	3,8	3,9

1/ Preliminary.

Seasonally adjusted estimates	June 2007	% change between May and June 2007	% change between January to March 2007 and April to June 2007
Electricity available for distribution (Gigawatt-hours)	20 238	0,9	0,9
Index of the physical volume of electricity production (2005=100)	108,1	0,3	0,8

**Table B - Percentage change in the seasonally adjusted quantity of electricity generated and available for distribution between the current quarter and the previous quarter**

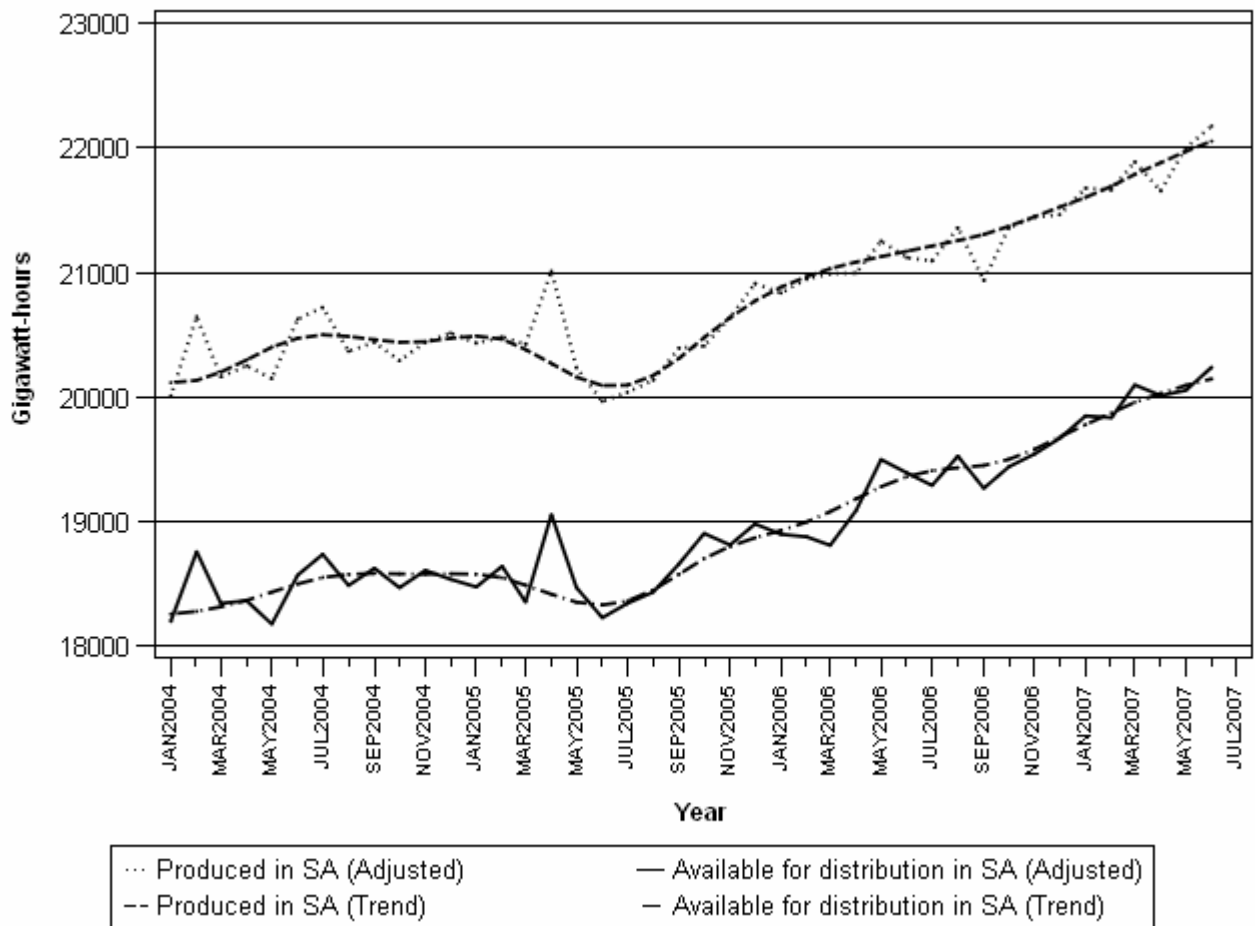
Gigawatt-hours	Seasonally adjusted quantity January to March 2007	Seasonally adjusted quantity April to June 2007	% change between January to March 2007 and April to June 2007	Quantity difference between January to March 2007 and April to June 2007
Electricity produced	65 226	65 826	0,9	600
Electricity available for distribution in South Africa	59 779	60 302	0,9	523

**Table C - Percentage change between the current quarter and the corresponding quarter of the previous year**

Gigawatt-hours	Actual quantity April to June 2006	Actual quantity April to June 2007	% change between April to June 2006 and April to June 2007	Quantity difference between April to June 2006 and April to June 2007
Electricity produced	63 959	66 387	3,8	2 428
Purchased outside South Africa (import)	2 347	2 829	20,5	482
Consumed in Power stations and auxiliary systems	4 540	4 727	4,1	187
Sold outside South Africa (export)	3 165	3 568	12,7	403
Electricity available for distribution in South Africa	58 600	60 921	4,0	2 321

Figure 1 below shows the seasonally adjusted and trend patterns for electricity produced and available for distribution in South Africa between January 2004 and June 2007. There was a gradual upward movement in the trend cycles from the beginning of the period until July 2004. From July 2004 up until February 2005 the trend cycles moved sideways, followed by a declining trend in both electricity production and consumption between March and June of 2005. From July 2005 to June 2007 the trends moved upwards.

**Figure 1 - Electricity produced and available for distribution in South Africa from 2004 to 2007**



**P J Lehohla**  
**Statistician-General**

**Detailed results: Tables**

**Table 1 - Total volume of electricity available for distribution in South Africa: 2002 to 2007**

	2002	2003	2004	2005	2006	2007*
January	16 191	17 095	17 850	18 149	18 603	19 560
February	15 215	16 168	17 277	17 169	17 396	18 298
March	16 552	17 655	18 476	18 487	18 982	20 269
April	16 362	16 905	17 524	18 133	18 122	18 984
May	17 852	18 159	18 909	19 224	20 312	20 908
June	18 017	18 330	19 337	18 983	20 166	1/ 21 029
July	18 956	19 183	20 156	19 657	20 632	
August	18 064	18 714	19 265	19 191	20 307	
September	17 125	17 526	18 362	18 384	18 987	
October	17 741	18 480	18 714	19 127	19 663	
November	17 233	17 790	18 314	18 523	19 244	
December	16 712	17 456	17 754	18 230	*18 909	
Year	206 020	213 461	221 938	223 257	231 323	

1/ Preliminary.  
\* Revised.

**Table 2 - Percentage change in electricity available for distribution in South Africa: 2002 to 2007**

	Percentage					
	2002	2003	2004	2005	2006	2007
January	0,8	5,6	4,4	1,7	2,5	5,1
February	2,3	6,3	6,9	-0,6	1,3	5,2
March	1,4	6,7	4,7	0,1	2,7	6,8
April	5,5	3,3	3,7	3,5	-0,1	4,8
May	5,5	1,7	4,1	1,7	5,7	2,9
June	7,3	1,7	5,5	-1,8	6,2	4,3
July	5,2	1,2	5,1	-2,5	5,0	
August	4,4	3,6	2,9	-0,4	5,8	
September	5,2	2,3	4,8	0,1	3,3	
October	5,6	4,2	1,3	2,2	2,8	
November	8,0	3,2	2,9	1,1	3,9	
December	9,8	4,5	1,7	2,7	3,7	
Year	5,1	3,6	4,0	0,6	3,6	

**Table 3 - Seasonally adjusted total volume of electricity available for distribution in South Africa: 2002 to 2007**

	Gigawatt-hours						% change between current and previous month
	2002	2003	2004	2005	2006	2007	
<b>January</b>	16 523	17 445	18 199	18 475	18 898	19 848	0,9
<b>February</b>	16 567	17 608	18 758	18 641	18 877	19 834	-0,1
<b>March</b>	16 447	17 557	18 344	18 354	18 809	20 097	1,3
<b>April</b>	17 070	17 684	18 364	19 056	19 088	20 011	-0,4
<b>May</b>	17 160	17 448	18 177	18 470	19 498	20 053	0,2
<b>June</b>	17 307	17 595	18 570	18 228	19 390	20 238	0,9
<b>July</b>	17 589	17 816	18 737	18 343	19 290		
<b>August</b>	17 282	17 938	18 487	18 434	19 525		
<b>September</b>	17 321	17 788	18 625	18 661	19 267		
<b>October</b>	17 460	18 233	18 469	18 905	19 439		
<b>November</b>	17 509	18 080	18 608	18 812	19 543		
<b>December</b>	17 619	18 322	18 537	18 981	19 668		

**Table 4 - Indices of the physical volume of electricity production: 2002 to 2007**

	Base : 2005=100					
	2002	2003	2004	2005	2006	2007
January	84,7	89,6	95,5	97,6	99,8	103,9
February	79,0	84,7	92,2	91,7	94,0	97,2
March	85,7	92,9	98,7	100,2	103,3	107,8
April	85,1	90,1	94,7	98,1	98,0	100,9
May	94,1	97,2	102,4	102,9	108,1	112,0
June	94,8	98,5	105,0	101,6	107,3	1/ 112,4
July	99,4	102,5	109,5	105,5	110,8	
August	94,5	102,4	104,3	103,0	109,1	
September	90,3	97,0	99,5	99,1	101,8	
October	94,3	102,2	102,1	102,5	107,2	
November	91,5	96,4	98,5	99,4	103,3	
December	87,4	94,0	96,0	98,2	100,9	
Year	90,1	95,6	99,9	100,0	103,6	

1/ Preliminary.

**Table 5 - Percentage change in indices of the physical volume of electricity production: 2002 to 2007**

	2002	2003	2004	2005	2006	2007
January	-0,1	5,8	6,6	2,2	2,3	4,1
February	1,9	7,2	8,9	-0,5	2,5	3,4
March	1,2	8,4	6,2	1,5	3,1	4,4
April	5,7	5,9	5,1	3,6	-0,1	3,0
May	6,2	3,3	5,3	0,5	5,1	3,6
June	9,0	3,9	6,6	-3,2	5,6	4,8
July	4,0	3,1	6,8	-3,7	5,0	
August	1,7	8,4	1,9	-1,2	5,9	
September	4,5	7,4	2,6	-0,4	2,7	
October	6,7	8,4	-0,1	0,4	4,6	
November	9,2	5,4	2,2	0,9	3,9	
December	10,4	7,6	2,1	2,3	2,7	
Year	5,0	6,2	4,4	0,1	3,7	

The percentage change is the change in the index of the physical volume of electricity production of the relevant year compared with the index of the physical volume of electricity production of the previous year expressed as a percentage.



**Table 6 - Seasonally adjusted indices of the physical volume of electricity production: 2002 to 2007**

	Base : 2005=100						% change between current and previous month
	2002	2003	2004	2005	2006	2007	
<b>January</b>	86,8	92,0	98,1	100,2	102,3	106,4	1,2
<b>February</b>	86,8	93,0	101,1	100,3	102,7	106,1	-0,3
<b>March</b>	85,8	93,0	98,7	100,0	102,9	107,3	1,1
<b>April</b>	89,3	94,4	99,3	102,9	103,0	106,3	-0,9
<b>May</b>	90,6	93,6	98,8	99,1	104,1	107,8	1,4
<b>June</b>	90,9	94,4	100,8	97,5	103,1	108,1	0,3
<b>July</b>	91,8	94,8	101,6	98,3	103,3		
<b>August</b>	90,1	97,9	99,8	98,7	104,6		
<b>September</b>	90,7	97,6	100,2	100,0	102,7		
<b>October</b>	91,7	99,4	99,4	100,0	104,7		
<b>November</b>	93,0	97,9	100,1	101,1	105,1		
<b>December</b>	92,6	98,9	100,5	102,5	105,1		

**Table 7 - Total volume of electricity imported: 2002 to 2007**

Month	Gigawatt-hours					
	2002	2003	2004	2005	2006	2007
January	670	705	828	729	872	1 086
February	643	637	811	714	646	939
March	783	706	863	533	581	970
April	733	547	641	598	587	1 052
May	658	569	547	849	879	897
June	704	518	560	813	881	1/ 880
July	702	792	607	856	926	
August	721	424	618	883	930	
September	637	266	590	686	971	
October	454	272	536	836	682	
November	477	583	746	865	862	
December	691	720	679	837	965	
Year	7 873	6 739	8 026	9 199	9 782	

1/ Preliminary.

**Table 8 - Total volume of electricity exported: 2002 to 2007**

Month	Gigawatt-hours					
	2002	2003	2004	2005	2006	2007
January	558	578	1 037	1 030	1 056	1 133
February	478	508	977	901	1 050	1 060
March	529	607	1 027	968	1 129	1 119
April	525	619	951	991	1 017	1 127
May	578	805	944	1 083	1 046	1 193
June	601	798	1 057	1 096	1 102	1/ 1 248
July	614	944	1 140	1 102	1 239	
August	605	1 030	1 049	1 144	1 262	
September	628	1 051	1 048	1 134	1 239	
October	626	1 116	1 112	1 161	1 311	
November	600	1 025	1 082	1 119	1 186	
December	608	1 055	1 029	1 155	1 129	
Year	6 950	10 136	12 453	12 884	13 766	

1/ Preliminary.

**Table 9a - Electricity produced and consumed in power stations, purchased and sold outside South Africa and available for distribution in South Africa (monthly figures)**

		Gigawatt-hours				
		June 2006	May 2007	June 2007 1/	% Change between June 2006 and June 2007	Difference between June 2006 and June 2007
<b>Total - All producers</b>	<b>Electricity produced</b>	21 897	22 849	22 951	4,8	1 054
	<b>Purchased outside South Africa (import)</b>	881	897	880	-0,1	1
	<b>Consumed in power stations and auxiliary systems</b>	1 510	1 645	1 554	2,9	44
	<b>Sold outside South Africa (export)</b>	1 102	1 193	1 248	13,2	146
	<b>Electricity available for distribution in South Africa</b>	20 166	20 908	21 029	4,3	863
<b>ESKOM</b>	<b>Electricity produced</b>	20 875	22 061	21 952	5,2	1 077
	<b>Purchased outside South Africa (import)</b>	881	897	880	-0,1	1
	<b>Consumed in power stations and auxiliary systems</b>	1 432	1 582	1 482	3,5	50
	<b>Sold outside South Africa (export)</b>	1 102	1 193	1 248	13,2	146
	<b>Electricity available for distribution in South Africa</b>	19 221	20 183	20 102	4,6	881

**Table 9b - Electricity produced and consumed in power stations, purchased and sold outside South Africa and available for distribution in South Africa (cumulative figures)**

		Gigawatt-hours			
		January to June 2006	January to June 2007 1/	% Change between January to June 2006 and January to June 2007	Difference between January to June 2006 and January to June 2007
<b>Total - All producers</b>	<b>Electricity produced</b>	124 579	129 443	3,9	4 864
	<b>Purchased outside South Africa (import)</b>	4 446	5 824	31,0	1 378
	<b>Consumed in power stations and auxiliary systems</b>	9 043	9 338	3,3	295
	<b>Sold outside South Africa (export)</b>	6 400	6 880	7,5	480
	<b>Electricity available for distribution in South Africa</b>	113 581	119 048	4,8	5 467
<b>ESKOM</b>	<b>Electricity produced</b>	119 694	124 571	4,1	4 877
	<b>Purchased outside South Africa (import)</b>	4 446	5 824	31,0	1 378
	<b>Consumed in power stations and auxiliary systems</b>	8 571	8 956	4,5	385
	<b>Sold outside South Africa (export)</b>	6 400	6 880	7,5	480
	<b>Electricity available for distribution in South Africa</b>	109 168	114 559	4,9	5 391

1/ Preliminary.

**Table 10 - Electricity distributed by Eskom by province for 2006 and 2007 1/**

		Gigawatt-hours									
		Western Cape	Eastern Cape	Northern Cape	Free State	Kwazulu-Natal	North West	Gauteng	Mpumalanga	Limpopo	Total South Africa
<b>2006</b>	<b>January</b>	1 852	626	388	712	3 611	2 073	4 442	2 635	904	17 242
	<b>February</b>	1 703	595	339	721	3 410	1 934	4 129	2 343	1 023	16 197
	<b>March</b>	1 879	639	394	740	3 747	2 019	4 690	2 684	890	17 682
	<b>April</b>	1 809	591	357	730	3 572	1 904	4 514	2 550	874	16 901
	<b>May</b>	1 906	665	374	809	3 826	2 082	5 525	2 784	955	18 925
	<b>June</b>	1 832	670	363	732	3 870	2 093	5 476	2 648	964	18 647
	<b>July</b>	1 946	788	399	810	3 657	2 151	5 707	2 661	998	19 116
	<b>August</b>	1 939	780	391	826	3 563	2 103	5 605	2 560	1 000	18 767
	<b>September</b>	1 828	753	409	736	3 456	1 963	4 963	2 487	993	17 588
	<b>October</b>	1 909	769	435	786	3 590	2 079	5 045	2 644	1 037	18 294
	<b>November</b>	1 867	745	439	762	3 443	1 982	4 965	2 687	958	17 848
	<b>December</b>	1 912	640	439	777	3 429	2 036	4 667	2 705	924	17 529
		<b>Year</b>	<b>22 382</b>	<b>8 261</b>	<b>4 727</b>	<b>9 141</b>	<b>43 174</b>	<b>24 419</b>	<b>59 728</b>	<b>31 388</b>	<b>11 520</b>
	<b>Year to date</b>	10 981	3 786	2 215	4 444	22 036	12 105	28 776	15 644	5 610	105 594
<b>2007</b>	<b>January</b>	1 955	770	456	780	3 541	2 168	4 809	2 835	930	18 244
	<b>February</b>	1 817	746	410	718	3 326	2 074	4 583	2 561	878	17 113
	<b>March</b>	2 018	816	467	793	3 650	2 299	5 070	2 884	965	18 962
	<b>April</b>	1 861	854	371	769	3 416	2 079	4 758	2 665	915	17 688
	<b>May</b>	2 012	951	401	825	3 702	2 279	5 563	2 866	975	19 574
	<b>June 2/</b>	1 977	815	412	847	3 682	2 244	5 830	2 805	844	19 456
		<b>Year to date</b>	11 640	4 952	2 517	4 732	21 317	13 143	30 613	16 616	5 507

1/ Wholesale energy as delivered by Eskom to the various provinces.

2/ Preliminary.

## Explanatory Notes

<b>Introduction</b>	<b>1</b>	Statistics South Africa (Stats SA) conducts a monthly sample survey of the electricity industry covering electricity undertakings and establishments (branches). This statistical release contains information regarding the number of electricity units generated and available for distribution in South Africa, the number of units purchased and sold outside South Africa and the number of units distributed by Eskom by province on a monthly basis. Both actual and seasonally adjusted figures are published.
	<b>2</b>	This statistical release reflects indices of the physical volume of electricity production on the basis of 2005=100. In accordance with international practice, the indices have to be rebased every five years to a new base year.
	<b>3</b>	In order to improve timeliness of the publication, some information for the current month may have been estimated due to late submission by respondents. These estimates will be revised in the next statistical release(s) as soon as actual information is available.
<b>Purpose of the survey</b>	<b>4</b>	The results of the monthly electricity generated and available for distribution survey are used to compile estimates of the Gross Domestic Product (GDP) and its components, which are used in monitoring the state of the economy and formulation of economic policy.
<b>Scope of the survey</b>	<b>5</b>	This survey covers electricity undertakings and establishments conducting activities concerned with the generation or transmission and distribution of electricity, including electrical power installations, which, as subsidiary divisions of undertakings, produce electricity for regular use by these undertakings.
<b>Classification</b>	<b>6</b>	The 1993 edition of the <i>Standard Industrial Classification of all Economic Activities (SIC)</i> , Fifth Edition, Report No. 09-90-02, was used to classify the statistical units in the survey. The SIC is based on the 1990 <i>International Standard Industrial Classification of all Economic Activities (ISIC)</i> with suitable adaptations for local conditions. Each statistical unit is classified to an industry, which reflects the predominant activity of the electricity undertaking or establishment.
<b>Response rate</b>	<b>7</b>	The response rate for the survey on electricity generated and available for distribution for June 2007 was 99%.
<b>Statistical unit</b>	<b>8</b>	The basic statistical unit for the collection of information is the electricity undertaking or establishment. The electricity undertaking or establishment is the smallest economic unit that functions as a separate entity. Each statistical unit is classified to an industry (see paragraph 5).
<b>Survey methodology and design</b>	<b>9</b>	All statistical units are stratified by type of economic activity according to the <i>Standard Industrial Classification of all Economic Activities (SIC)</i> and measure of size, where measure of size is the volume of electricity generated by the electricity undertaking or establishment. All large undertakings or establishments (size category one cases) are completely enumerated. A sample is drawn from medium and small size undertakings and establishments by systematically selecting undertakings or establishments within each size category. An electricity undertaking or establishment with a total generating capacity of less than 500 kilowatt is excluded from the sample.
	<b>10</b>	The survey is conducted by mail each month collecting information from a sample of 22 electricity undertakings or establishments.

<b>Monthly production indices</b>	11	The calculation of the monthly production indices is based on the number of electricity units produced.
<b>Benchmarking</b>	12	The index of physical volume of electricity production should provide an accurate reflection of the trend of activities of the relevant industry. The level of activities as measured by the monthly electricity generated and available for distribution survey is based on information received from a sample of electricity undertakings and establishments, which are weighted according to the original sample, designed in order to represent the population of electricity undertakings and establishments. It is necessary to adjust the level of activities as measured by the monthly sample survey to the level of activities as measured periodically by the Census of electricity, gas and steam. This procedure, whereby the latest results of an economic census are used to compile more accurate level estimates for a certain year, is known as benchmarking.
	13	The results of the 1995 Census of electricity, gas and steam served as benchmarks to verify or adjust the level of the monthly physical volume of electricity production indices collected through the monthly sample survey. The level adjustments were done on the volume indices for July of the relevant census year (the 1995 census year covered the period 1 January 1995 to 31 December 1995 and therefore, the benchmarking was done using the index of July 1995 as reference point).
<b>Seasonal adjustment</b>	14	Seasonally adjusted estimates of all items are generated each month, using the X-11 Seasonal Adjustment Program developed by US Bureau of the Census Economic Research and Analyses Division, 1968. Seasonal adjustment is a means of removing the estimated effects of normal seasonal variation from the series so that the effects of other influences on the series can be more clearly recognised. Seasonal adjustment does not aim to remove irregular or non-seasonal influences, which may be present in any particular month. Influences that are volatile or unsystematic can still make it difficult to interpret the movement of the series even after adjustment for seasonal variations. This means the month-to-month movements of seasonally adjusted estimates may not be reliable indicators of trend behaviour.
<b>Trend cycle</b>	15	The trend is the long-term pattern or movement of a time series. The X-11 Seasonal Adjustment Program is used for smoothing seasonally adjusted estimates.
<b>Related publications</b>	16	Users may also wish to refer to the following publications which are available from Stats SA - <ul style="list-style-type: none"> <li>• <i>Bulletin of Statistics.</i></li> <li>• <i>SA Statistics.</i></li> </ul>
<b>Unpublished statistics</b>	17	In some cases Stats SA can also make available statistics, which are not published. The statistics can be made available as computer printouts, on diskette or CD. Generally a charge is made for providing unpublished statistics.
<b>Rounding-off figures</b>	18	The figures in the tables have, where necessary, been rounded off to the nearest digit shown. There may, therefore, be slight discrepancies between the sums of the constituent items and the totals shown.
<b>Pre-release policy</b>	19	Stats SA pre-release policy may be inspected at its website, <a href="http://www.statssa.gov.za">www.statssa.gov.za</a> .

## Glossary

<b>Electricity undertaking</b>	An electricity undertaking is an undertaking concerned with the generation or transmission and distribution of electricity, including electrical power installations, which as subsidiary divisions of undertakings produce electricity for regular use by these undertakings.										
<b>Index of physical volume of electricity production</b>	A statistical measure of the change in the volume of production of electricity in a given period and the volume of production of electricity in the base period. The base period is 2005. The production in the base period is set at 100.										
<b>Industry</b>	An industry consists of a group of undertakings or establishments engaged in the same or similar kinds of economic activity. Industries are defined in the 1993 <i>System of National Accounts (1993 SNA)</i> in the same way as in the <i>Standard Industrial Classification of all Economic Activities (SIC)</i> , Fifth Edition, Report No. 09-90-02.										
<b>Unit of electricity</b>	One gigawatt-hour of electricity is equal to one million kilowatt-hours. A kilowatt-hour is the basic unit of electrical energy equal to one kilowatt of power supplied to or taken from an electric circuit steadily for one hour. One kilowatt-hour equals one thousand watt-hours.										
<b>Symbols and abbreviations</b>	<table border="0"> <tr> <td>GDP</td> <td>Gross Domestic Product</td> </tr> <tr> <td>ISIC</td> <td>International Standard Industrial Classification</td> </tr> <tr> <td>SIC</td> <td>Standard Industrial Classification of all Economic Activities</td> </tr> <tr> <td>Stats SA</td> <td>Statistics South Africa</td> </tr> <tr> <td>*</td> <td>Revised figures</td> </tr> </table>	GDP	Gross Domestic Product	ISIC	International Standard Industrial Classification	SIC	Standard Industrial Classification of all Economic Activities	Stats SA	Statistics South Africa	*	Revised figures
GDP	Gross Domestic Product										
ISIC	International Standard Industrial Classification										
SIC	Standard Industrial Classification of all Economic Activities										
Stats SA	Statistics South Africa										
*	Revised figures										

## General information

Stats SA publishes approximately 300 different statistical releases each year. It is not economically viable to produce them in more than one of South Africa's eleven official languages. Since the releases are used extensively, not only locally but also by international economic and social-scientific communities, Stats SA releases are published in English only.

Stats SA has copyright on this publication. Users may apply the information as they wish, provided that they acknowledge Stats SA as the source of the basic data wherever they process, apply, utilise, publish or distribute the data: and also that they specify that the relevant application and analysis (where applicable) result from their own processing of the data.

### Advanced release calendar

An advanced release calendar is disseminated on [www.statssa.gov.za](http://www.statssa.gov.za)

### Stats SA products

A complete set of Stats SA publications is available at the Stats SA Library and the following libraries:

National Library of South Africa, Pretoria Division  
National Library of South Africa, Cape Town Division  
Natal Society Library, Pietermaritzburg  
Library of Parliament, Cape Town  
Bloemfontein Public Library  
Johannesburg Public Library  
Eastern Cape Library Services, King William's Town  
Central Regional Library, Polokwane  
Central Reference Library, Nelspruit  
Central Reference Collection, Kimberley  
Central Reference Library, Mmabatho

Stats SA also provides a subscription service.

### Electronic services

A large range of data is available via on-line services, diskette, CD and computer printouts. For more details about our electronic data services, contact (012) 310 8600/8390/8351/8496/4892/8095.

You can visit us on the Internet at: [www.statssa.gov.za](http://www.statssa.gov.za)

### General enquiries

Telephone number: (012) 310 8911 X2042 (technical enquiries)  
(012) 310 8161 (orders)  
(012) 310 4883/ 4885/ 8018 (library)

Fax number: (012) 310 8664 (technical enquiries)

email: [gerdab@statssa.gov.za](mailto:gerdab@statssa.gov.za) (technical enquiries)  
[nicolaic@statssa.gov.za](mailto:nicolaic@statssa.gov.za) (technical enquiries)  
[info@statssa.gov.za](mailto:info@statssa.gov.za) (user information services)  
[distribution@statssa.gov.za](mailto:distribution@statssa.gov.za) (orders)

Postal address: Private Bag X44, Pretoria, 0001

*Produced by Stats SA*