

Generation and consumption of electricity

June 2003

Co-operation between Statistics South Africa (Stats SA), the citizens of the country, the private sector and government institutions is essential for a successful statistical system. Without continued co-operation and goodwill, the timely release of relevant and reliable official statistics will not be possible.

Embargo: 13:00
Date: 7 August 2003

Stats SA publishes approximately three hundred different releases each year. It is not economically viable to produce them in more than one of South Africa's eleven official languages. Since the releases are used extensively, not only locally, but also by international economic and social-scientific communities, Stats SA releases are published in English only.

This data in this statistical release adheres to the Special Data Dissemination Standard (SDDS) of the International Monetary Fund (IMF), which sets out standards on coverage, periodicity and timeliness of data; access by the public; integrity; and quality of the disseminated data.

Key figures as at the end of June 2003

Actual estimates	June 2003	% change between June 2002 and June 2003	% change between April 2002 to June 2002 and April 2003 to June 2003	% change between January 2002 to June 2002 and January 2003 to June 2003
Electricity consumed (Gigawatt-hours)	18 133	+2,1	+2,3	+4,0
Electricity imported (Gigawatt-hours)	518	-26,4	-22,1	-12,2
Electricity exported (Gigawatt-hours)	798	+32,8	+30,4	+19,8
Index of the physical volume of electricity production (2000=100)	113,6	+4,6	+4,6	+5,8

Seasonally adjusted estimates	June 2003	% change between May 2003 and June 2003	% change between January 2003 to March 2003 and April 2003 to June 2003
Electricity consumed (Gigawatt-hours)	17 305	+0,7	-0,2
Electricity imported (Gigawatt-hours)	543	-13,8	-15,6
Electricity exported (Gigawatt-hours)	843	-2,5	+28,2
Index of the physical volume of electricity production (2000=100)	108,4	+1,0	+1,2

Key findings as at the end of June 2003

Consumption of electricity decreases

The consumption of electricity for the second quarter of 2003, after seasonal adjustment, decreased by 0,2% (-103 Gigawatt-hours) compared with the previous three months. However, the consumption of electricity for June 2003 increased by 2,1% (+370 Gigawatt-hours) compared with June 2002. The consumption of electricity in South Africa for the first six months of 2003 increased by 4,0% (+3 998 Gigawatt-hours) compared with the first six months of 2002.

Production of electricity increases

The production of electricity for the second quarter of 2003, after seasonal adjustment, increased by 1,2% (+755 Gigawatt-hours) compared with the first quarter of 2003. The production of electricity for June 2003 increased by 4,6% (+869 Gigawatt-hours) compared with June 2002. Furthermore, the production of electricity in South Africa for the first six months of 2003 increased by 5,8% (+6 112 Gigawatt-hours) compared with the first six months of 2002.

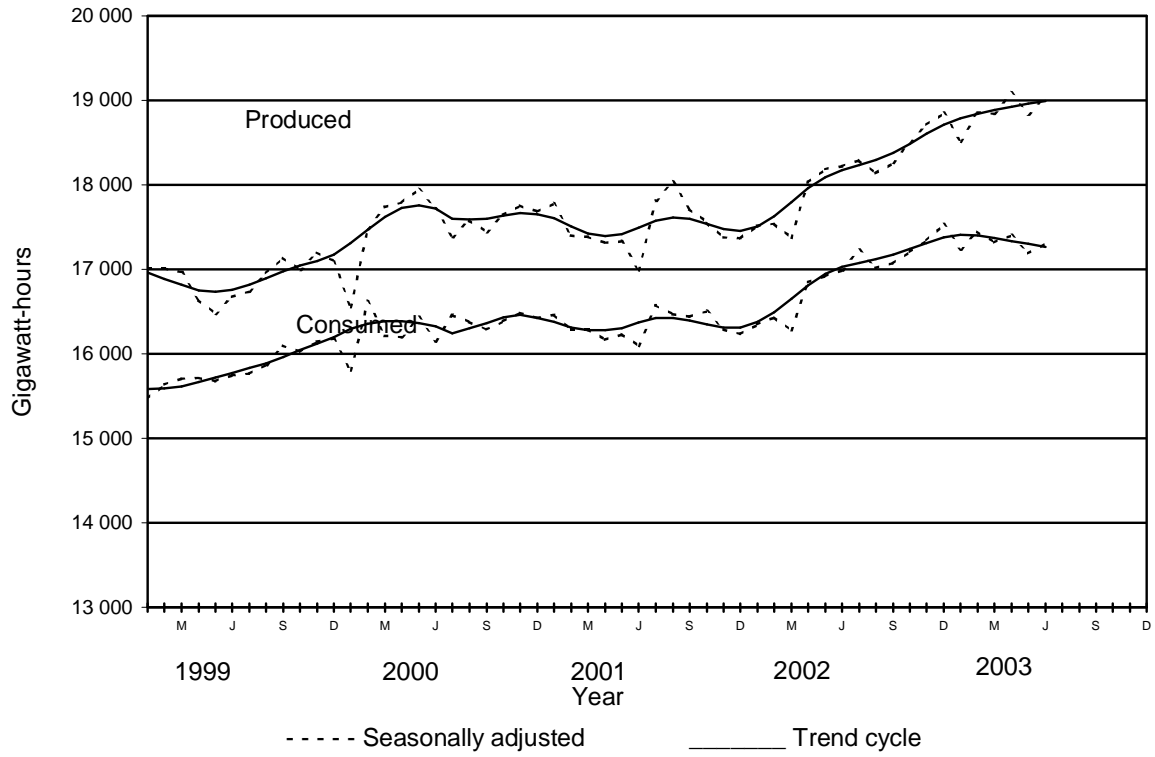
Import of electricity decreases

The seasonally adjusted import of electricity from neighbouring countries for the second quarter of 2003 decreased by 15,6% (-314 Gigawatt-hours) compared with the first quarter of 2003. The import of electricity for June 2003 decreased by 26,4% (-186 Gigawatt-hours) compared with June 2002. Furthermore, the import of electricity in South Africa for the first six months of 2003 decreased by 12,2% (-511 Gigawatt-hours) compared with the first six months of 2002.

Export of electricity increases

The seasonally adjusted export of electricity for the second quarter of 2003 increases by 28,2% (+542 Gigawatt-hours) compared with the first quarter of 2003. Furthermore, the export of electricity for June 2003 increased by 32,8% (+197 Gigawatt-hours) compared with June 2002. The export of electricity for the first six months of 2003 increased by 19,8% (+646 Gigawatt-hours) compared with the first six months of 2002.

Figure 1 – Electricity consumed and produced in South Africa



Source: Stats SA

pp
P J Lehohla
Statistician-General: Statistics South Africa

Contents

	Page
Notes	5
Tables	
Table 1 Total volume of electricity consumed in South Africa (SA): 1998 to 2003.....	6
Table 2 Seasonally adjusted total volume of electricity consumed in SA: 1998 to 2003.....	6
Table 3 Indices of the physical volume of electricity production: 1998 to 2003.....	7
Table 4 Seasonally adjusted indices of the physical volume of electricity production: 1998 to 2003.....	7
Table 5 Total volume of electricity imported: 1998 to 2003.....	8
Table 6 Total volume of electricity exported: 1998 to 2003.....	8
Table 7 Electricity produced and consumed in power stations, purchased and sold outside South Africa and consumed in South Africa.....	9
Table 8 Electricity distributed by Eskom according to province for the year 2003.....	10
Additional information	
Explanatory notes	11
Technical notes	13
Glossary	14
For more information	15

Notes

Forthcoming issues	Issue	Expected release date
	June 2003	4 September 2003
	July 2003	2 October 2003
	August 2003	6 November 2003
	September 2003	4 December 2003
	October 2003	8 January 2004
	November 2003	5 February 2004

Purpose of the survey The Generation and Consumption of Electricity Survey is a countrywide survey covering a sample of electricity undertakings and establishments conducting activities concerned with the generation or transmission and distribution of electricity in the South African economy. The information received is used to estimate key economic statistics and calculate production indices in order to compile estimates of the Gross Domestic Product (GDP) and its components, which are used to formulate and monitor government policy.

Table 1 - Total volume of electricity consumed in South Africa (SA): 1998 to 2003
Gigawatt-hours

Month	1998	1999	2000	2001	2002	2003
January	15 403	15 153	15 512	16 064	15 968	16 837
February	14 459	14 360	15 224	14 871	15 005	15 905
March	15 714	15 791	16 225	16 320	16 353	17 389
April	14 923	15 063	15 399	15 515	16 172	16 696
May	16 261	16 327	17 064	16 929	17 642	17 941
June	16 280	16 393	16 818	16 788	17 763	18 133
July	16 867	17 051	17 759	18 021	18 743	
August	16 417	16 708	17 214	17 300	17 842	
September	15 536	15 937	16 180	16 277	16 892	
October	15 957	16 322	16 709	16 794	17 523	
November	15 136	15 831	16 161	15 960	17 005	
December	14 563	15 184	15 395	15 224	16 440	
Year	187 516	190 120	195 660	196 063	203 348	

Table 2 - Seasonally adjusted total volume of electricity consumed in SA: 1998 to 2003
Gigawatt-hours

Month	1998	1999	2000	2001	2002	2003
January	15 751	15 497	15 867	16 446	16 346	17 235
February	15 805	15 703	16 670	16 270	16 431	17 449
March	15 700	15 777	16 226	16 257	16 279	17 316
April	15 655	15 777	16 173	16 169	16 850	17 403
May	15 600	15 684	16 387	16 236	16 920	17 189
June	15 573	15 742	16 139	16 093	16 990	17 305
July	15 524	15 727	16 358	16 575	17 229	
August	15 557	15 865	16 363	16 468	17 018	
September	15 664	16 065	16 298	16 438	17 072	
October	15 667	16 019	16 402	16 506	17 210	
November	15 493	16 167	16 496	16 289	17 344	
December	15 549	16 170	16 426	16 234	17 534	

Table 3 - Indices of the physical volume of electricity production: 1998 to 2003**Base: (2000=100)**

Month	1998	1999	2000	2001	2002	2003
January	97,1	94,7	92,5	98,6	97,1	102,6
February	91,1	89,0	91,2	90,1	90,5	97,1
March	98,0	97,0	100,9	98,5	98,5	106,6
April	93,5	90,1	95,9	93,6	97,8	103,6
May	102,2	98,0	106,3	103,0	108,1	111,9
June	102,2	98,9	104,9	101,1	108,6	113,6
July	106,2	104,0	107,8	111,1	114,2	
August	99,1	101,8	105,5	108,0	108,5	
September	96,6	96,9	99,1	100,5	103,5	
October	99,8	99,1	103,1	102,7	108,3	
November	94,1	96,0	99,1	97,4	104,9	
December	89,8	90,8	93,8	92,1	100,0	
Year	97,5	96,4	100,0	99,7	103,3	

Table 4 - Seasonally adjusted indices of the physical volume of electricity production: 1998 to 2003**Base: (2000=100)**

Month	1998	1999	2000	2001	2002	2003
January	99,2	96,8	94,7	101,1	99,8	105,5
February	99,4	97,2	99,9	99,1	99,8	107,4
March	98,8	97,8	101,7	99,3	99,3	107,6
April	98,6	95,0	101,1	98,4	102,6	108,7
May	98,4	94,1	102,1	98,8	103,7	107,3
June	97,8	94,8	100,6	96,7	103,7	108,4
July	97,2	95,1	98,4	101,4	104,1	
August	93,7	96,5	100,1	102,8	103,3	
September	97,0	97,3	99,4	100,9	104,0	
October	97,6	96,6	100,4	100,0	105,4	
November	96,1	97,9	100,9	99,0	106,5	
December	96,2	97,4	100,7	98,9	107,3	

Table 5 - Total volume of electricity imported: 1998 to 2003**Gigawatt-hours**

Month	1998	1999	2000	2001	2002	2003
January	11	185	683	569	670	705
February	52	201	529	488	643	637
March	159	302	6	665	783	706
April	176	682	24	774	733	547
May	133	719	20	629	658	567
June	187	654	2	797	704	518
July	141	515	599	479	702	
August	667	613	476	282	721	
September	203	679	495	507	637	
October	161	688	506	713	454	
November	273	644	601	636	477	
December	212	791	778	708	691	
Year	2 375	6 673	4 719	7 247	7 873	

Table 6 - Total volume of electricity exported: 1998 to 2003**Gigawatt-hours**

Month	1998	1999	2000	2001	2002	2003
January	330	346	197	616	558	578
February	360	267	169	470	478	508
March	325	248	196	498	529	607
April	367	217	155	463	525	619
May	388	318	213	508	578	805
June	429	347	193	496	601	798
July	472	381	363	543	614	
August	350	465	389	569	605	
September	343	480	458	581	628	
October	400	440	540	630	626	
November	465	432	525	598	600	
December	303	325	609	547	608	
Year	4 532	4 266	4 007	6 519	6 950	

Table 7 - Electricity produced and consumed in power stations, purchased and sold outside South Africa and consumed in South Africa

Gigawatt-hours

Description	June 2002	May 2003	June 2003	January 2002 to June 2002	January 2003 to June 2003	Percentage change between January 2002 to June 2002 and January 2003 to June 2003
Total - All Producers						
Electricity produced	19 071	19 646	19 940	105 449	111 561	+ 5,8
Purchased outside South Africa (import)	704	567	518	4 191	3 680	- 12,2
Consumed in power stations and auxilliary systems	1 411	1 467	1 527	7 470	8 425	+12,8
Sold outside South Africa (export)	601	805	798	3 269	3 915	+ 19,8
Electricity consumed in South Africa ^{1/}	17 763	17 941	18 133	98 903	102 901	+ 4,0
Eskom						
Electricity produced	18 259	18 921	19 102	101 507	107 515	+ 5,9
Purchased outside South Africa (import)	704	567	518	4 191	3 680	- 12,2
Consumed in power stations and auxilliary systems	1 310	1 368	1 425	6 951	7 850	+ 12,9
Sold outside South Africa (export)	601	805	798	3 269	3 915	+ 19,8
Electricity consumed in South Africa ^{1/}	17 052	17 315	17 397	95 481	99 430	+ 4,1

^{1/} As indicated by electricity available for distribution

Table 8 - Electricity distributed by Eskom according to province for the year 2003**Gigawatt-hours**

Month	Western Cape	Eastern Cape	Northern Cape	Free State	North West
January	1 673	545	379	792	2 356
February	1 622	520	355	742	2 169
March	1 763	590	372	814	2 318
April	1 655	534	330	766	2 241
May	1 670	572	334	828	2 145
June	1 412	495	1 227	992	1 837
July					
August					
September					
October					
November					
December					
Year	9 795	3 256	2 997	4 934	13 066

Month	KwaZulu-Natal	Mpumalanga	Gauteng	Limpopo	Total RSA
January	3 204	2 090	4 058	740	15 837
February	2 970	1 938	3 802	699	14 817
March	3 216	2 217	4 201	786	16 279
April	3 155	2 070	4 095	752	15 599
May	3 604	1 270	4 341	1 757	16 521
June	3 977	1 267	3 621	1 808	16 637
July					
August					
September					
October					
November					
December					
Year	20 126	10 852	24 118	6 542	95 690

Additional information

Explanatory Notes

- | | | |
|--------------------------------------|----------|--|
| Introduction | 1 | Statistics South Africa (Stats SA) conducts a monthly sample survey of the electricity industry covering electricity undertakings and establishments (branches). This statistical release contains information regarding the number of electricity units produced and consumed in South Africa, the number of units purchased and sold outside South Africa and the number of units distributed by Eskom according to province on a monthly basis. Both actual and seasonally adjusted figures are published. |
| | 2 | This statistical release reflects indices of the physical volume of electricity production. In accordance with international practice, the indices have to be rebased every five years to a new base year. The indices in this statistical release have been calculated on the basis of 2000=100. Rebased indices were published since the October 2001 Statistical release P4141 - Generation and Consumption of Electricity on 6 December 2001. |
| | 3 | In order to improve timeliness of the publication, some information for the current month may have been estimated due to late submission by respondents. These estimates will be revised in the next statistical release(s) as soon as actual information is available. |
| Scope of the survey | 4 | This survey covers electricity undertakings and establishments conducting activities concerned with the generation or transmission and distribution of electricity, including electrical power installations which, as subsidiary divisions of undertakings, produce electricity for regular use by these undertakings. |
| Classification | 5 | The 1993 edition of the Standard Industrial Classification of all Economic Activities (SIC), Fifth Edition, Report No. 09-90-02, was used to classify the statistical units in the survey. The SIC is based on the 1990 International Standard Industrial Classification of all Economic Activities (ISIC) with suitable adaptations for local conditions. Each statistical unit is classified to an industry, which reflects the predominant activity of the electricity undertaking or establishment. |
| Statistical unit | 6 | The basic statistical unit for the collection of information is the electricity undertaking or establishment. The electricity undertaking or establishment is the smallest economic unit that functions as a separate entity. Each statistical unit is classified to an industry (cf. paragraph 5). |
| Survey methodology and design | 7 | All statistical units are stratified by type of economic activity according to the Standard Industrial Classification of all Economic Activities (SIC) and measure of size, where measure of size is the volume of electricity generated by the electricity undertaking or establishment. All large undertakings or establishments (size category one cases) are completely enumerated. A sample is drawn from medium and small size undertakings and establishments by systematically selecting undertakings or establishments within each size category. An electricity undertaking or establishment with a total generating capacity of less than 500 kilowatt is excluded from the sample. |
| | 8 | The survey is conducted by mail each month collecting information from a sample of 22 electricity undertakings or establishments. |

Monthly production indices	9	The calculation of the monthly production indices is based on the number of electricity units produced.
Benchmarking	10	The index of physical volume of electricity production should provide an accurate reflection of the trend of activities of the relevant industry. The level of activities as measured by the monthly Generation and Consumption of Electricity sample survey is based on information received from a sample of electricity undertakings and establishments which is weighted according to the original sample design in order to represent the population of electricity undertakings and establishments. It is necessary to adjust the level of activities as measured by the monthly sample survey to the level of activities as measured periodically by the Census of Electricity, Gas and Steam. This procedure, whereby the latest results of an economic census are used to compile more accurate level estimates for a certain year, is known as benchmarking.
	11	The results of the 1995 Census of Electricity, Gas and Steam served as benchmarks to verify or adjust the level of the monthly physical volume of electricity production indices collected through the monthly sample survey. The level adjustments were done on the volume indices for July of the relevant census year (the 1995 census year covered the period 1 January 1995 to 31 December 1995 and, therefore, the benchmarking was done using the index of July 1995 as reference point). The results, due to benchmarking, were published in the October 1997 statistical release P4141 - Generation and Consumption of Electricity on 4 December 1997.
Seasonal adjustment	12	Seasonally adjusted estimates of all items are generated each month, using the X-11 Seasonal Adjustment Program developed by US Bureau of the Census Economic Research and Analyses Division, 1968. Seasonal adjustment is a means of removing the estimated effects of normal seasonal variation from the series so that the effects of other influences on the series can be more clearly recognised. Seasonal adjustment does not aim to remove irregular or non-seasonal influences, which may be present in any particular month. Influences that are volatile or unsystematic can still make it difficult to interpret the movement of the series even after adjustment for seasonal variations. This means the month-to-month movements of seasonally adjusted estimates may not be reliable indicators of trend behaviour.
Trend cycle	13	The trend is the long-term pattern or movement of a time series. The X-11 Seasonal Adjustment Program is used for smoothing seasonally adjusted estimates.
Related publications	14	Users may also wish to refer to the following publications which are available from Stats SA - <ul style="list-style-type: none"> • Bulletin of Statistics. • SA Statistics.
Unpublished statistics	15	In some cases Stats SA can also make available statistics which are not published. The statistics can be made available as computer printouts, on diskette or CD. Generally a charge is made for providing unpublished statistics.
Rounding-off of figures	16	The figures in the tables have, where necessary, been rounded off to the nearest digit shown. There may, therefore, be slight discrepancies between the sums of the constituent items and the totals shown.

- Pre-release policy**
- 17** Stats SA has adopted the confidential pre-release policy in respect of selected economic indicators and specific government departments. The policy accords with practice among leading statistical agencies. The statistical integrity of the indices and strict observance of the release time has been assured by the following procedure:
- 18** In respect of this statistical release, an official representative from the Office of the President, the Department of Trade and Industry, the Department of Finance and the South African Reserve Bank will receive a copy of the release on a strictly confidential basis two hours in advance of the public issue.
- 19** Stats SA pre-release policy may be inspected at its Website, www.statssa.gov.za

Technical notes

- Response rates** The response rate for the survey on the generation and consumption of electricity for June 2003 was 100%.

Glossary

Electricity undertaking	An electricity undertaking is an undertaking concerned with the generation or transmission and distribution of electricity, including electrical power installations, which as subsidiary divisions of undertakings, produce electricity for regular use by these undertakings.
Establishment (branch)	An establishment (branch) is defined as the smallest economic unit, which operates as a separate entity for which comprehensive financial records are kept.
Index of physical volume of electricity production	The index of physical volume of electricity production or a production index is a statistical measure of the change in the volume of production. The production index of electricity is the ratio between the volume of production of electricity in a given period and the volume of production of electricity in the base period. The base period is 2000. The production in the base period is set at 100.
Industry	An industry consists of a group of undertakings or establishments engaged in the same or similar kinds of economic activity. Industries are defined in the 1993 System of National Accounts (1993 SNA) in the same way as in the Standard Industrial Classification of all Economic Activities (SIC), Fifth Edition, Report No. 09-90-02.
Unit of electricity	One unit of electricity is equal to 1 kilowatt-hour (kWh). One gigawatt-hour (gWh) of electricity is equal to one million kilowatt-hours.

For more information

Stats SA publishes approximately 300 different statistical releases each year. It is not economically viable to produce them in more than one of South Africa's eleven official languages. Since the releases are used extensively, not only locally but also by international economic and social-scientific communities, Stats SA releases are published in English only.

Stats SA has copyright on this publication. Users may apply the information as they wish, provided that they acknowledge Stats SA as the source of the basic data wherever they process, apply, utilise, publish or distribute the data: and also that they specify that the relevant application and analysis (where applicable) result from their own processing of the data.

Advanced release calendar

An advanced release calendar is disseminated on <http://www.statssa.gov.za>

Stats SA products

A complete set of Stats SA publications is available at the Stats SA Library and the following libraries:

National Library of South Africa, Pretoria Division
 National Library of South Africa, Cape Town Division
 Natal Society Library, Pietermaritzburg
 Library of Parliament, Cape Town
 Bloemfontein Public Library
 Johannesburg Public Library
 Eastern Cape Library Services, King William's Town
 Central Regional Library, Polokwane
 Central Reference Library, Nelspruit
 Central Reference Collection, Kimberley
 Central Reference Library, Mmabatho

Stats SA also provides a subscription service.

Electronic services

A large range of data are available via on-line services, diskette, CD and computer printouts. For more details about our electronic data services, contact (012) 310 8600/8390/8351/8496/4892/8095.

You can visit us on the Internet at: www.statssa.gov.za

Enquiries

Telephone number: (012) 310 8600/8390/8351/8496/4892/8095 (user information services)
 (012) 310 8228/8984 (technical enquiries)
 (012) 310 8161 (orders)
 (012) 310 8490 (library)

Technical enquiries: (012) 310 8332

e-mail: Godfrey@statssa.gov.za
Mosesmn@statssa.gov.za

Postal address: Private Bag X44, Pretoria, 0001